



ALPHA
& OMEGA
TULI

PRODUKSIEVEILING

27 MEI 2026 | 11H00 | ESSEX, BURGERSDORP

BKB
LEWENDEHAWE &
AFSLAERSDIENSTE



AANBOD:

- 25 TULI BULLE
- 20 TULI STOET VROULIKE DIERE (DRAGTIG)
- 80 KOMMERSIELE VROULIKE DIERE (DRAGTIG)
- 10 DRAGTIGE STOET VERSE

MEERKAT
ONLINE AUCTIONS

ALWYN MARX 083 448 7870 | GERT SCHMIDT 084 941 1395 | HARM MARX 087 550 1411 | ANDRE BOTHA (BKB) 072 272 7309
ANDRE GREYVENSTEIN (BKB) 082 310 8701 | JAN VAN DER WALT (BKB) 082 376 6178 | JOVAAN CLOETE (BKB AFSLAER) 079 575 0795

'n Groot Dank aan al ons Borge:

GDL



FINANCIAL SERVICES

Burgersdorp: 051 653 0348

Aliwal-Noord: 051 633 3335



SAAM BEREIK ONS MEER
TOGETHER WE ACHIEVE MORE

Bennie Pieterse
045 943 1062



media market



Nico Brink
0761570191



FNB

Joey Theron 060 976 1819
Amelia 084 589 0051



HEINRICH FERREIRA VERVOER



LEWENDEHAWE

WOL

VEEVOERE

082 784 7714

Alltech®

BKB



Afrivet

Like your vet in the veld

JACQUES DE VILLIERS 066 295 9111
Jacques de Villiers



MSD

Animal Health
Frans Loots

MADE IN THE KAROO

Louis Retief

C +27 84 6800 333

T +27 51 6531 774

E louis@madeinthekaroo.co.za

FB Made in the Karoo

W www.madeinthekaroo.co.za



Tiaan Jacobs

Voermol



ANTROVET

BKB

LEWENDEHAWE &
AFSLAERSDIENSTE

BAIE WELKOM

BY DIE

ALPHA & OMEGA

TULI'S

PRODUKSIEVEILING

27 MEI 2026



The Trusted Home of Agriculture
Die Betroubare Tuiste van Landbou

AMPTELIKE VEILINGSKATALOGUS VIR /
OFFICIAL AUCTION CATALOGUE FOR

ALPHA OMEGA EN ALPHA OMEGA OOS SHARE

Essex Farm, Burgersdorp
27 May 2026

All Pedigree- and Performance Data is as recorded on LOGIX on 19 May 2026



ANIMAL, OWNER AND PEDIGREE INFORMATION

12345

LOT 1 (M)

V-PLAN 14

SUPERBULL BREEDERS

Town, Province
078 737 2855
super_bull@webmail.com

SB 200201 PP(c)
SUPERBULL'S SUPERSTAR SB 200201

Herd Book	SP
Birth date	2020-01-01
Age	2y 7m
Inbreeding	1%
DNA	ABC001234

9 (& 10)

SB 140007
SUPERBULL SB 140007 Pp(c)

Parentage	Sire	Dam
DNA	X	✓
Genomic	X	✓

11

SB 110001
SUPERBULL SB 11 0100

SB 110012 P
SUPERBULL SB 110012
Age 10 | AFC 32 | ICP 475
Calves 5 | Weaned -
Avg. WI - | Wean Mat. 80

SB 110001
SUPERBULL SB 110400

SB 060004 Pch
SUPERBULL SB 060004
Age 13 | AFC 72 | ICP 360
Calves 8 | Weaned 7
Avg. WI 105 | Wean Mat. 110

13

6

7

8

12

1. Lot Number & sex (mixed lots)
2. Breed's logo
3. GT - animal is genomically tested
4. Animal Identification Number and Name
5. Polled Status
 - Celtic: PP(c)/Pp(c) - polled, HH(c) - horned
 - Phenotypic: P/Pch - polled, HH - horned, SC - scurs
6. Animal's photo, or Herd's logo
7. Herd's logo
8. Owner's information
9. Animal's information
 - Herd book section
 - Birth date
 - Animal's age
 - Animal's inbreeding percentage
 - DNA Number - if available
10. Additional information (only females)
 - Age at first calving
 - Number of calves born
 - Number of calves weaned
 - Average Wean Index
 - Intercalving Period
11. Parentage Verification - a green tick (✓) indicates that the sire and/or dam has been verified via microsatellite (DNA) and/or Genomic testing
12. Dam information
 - Age and Number of Calvings
 - Average Wean Index and Number of Calves Weaned
 - Age at First Calving and Intercalving Period
 - Cow award
13. Four (4) generation pedigree
14. VPLAN Membership

QR Code
This code can be scanned with a smart device. It redirects to the animal's information on www.SABeeFBulls.com where additional information for the animal is available.



Myostatin	
Q204X	Free
NT821	Carrier
F94L	Not Tested

Myostatin Results

- Free - free from double muscling genes
- Carrier - heterozygotic / carrier of one double muscling gene
- D. Muscled - homozygotic / double muscled

GENETIC VALUES - BUILDING BLOCKS

Calf and Mother				Fertility				Post-Wean Growth			Frame			Carcass		
Birth Dir.	Birth Mat.	Wean Dir.	Wean Mat.	Scr. Circ.	Heifer Fert.	Cow Fert.	Longev.	Post Wean	ADG	FCR	Mature Weight	Height	Length	EMA	Fat	Mar
83	121	130	89	112	84	101	112	125	126	129	113	104	115	149	82	119
87%	70%	83%	70%	81%	68%	59%	69%	72%	76%	80%	65%	81%	80%	77%	74%	73%

The Logix Selection Values are compiled of specific genetic building blocks, as indicated in the selection value descriptions on the next page. These genetic building blocks are indicated in the catalogue by their Breeding Value indices and accuracies.

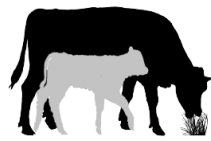
PHENOTYPIC VALUES

Birth Weight	205D Weight	365D Weight	540D Weight	ADG Index	FCR Index	Scrotum	LH
47kg	239kg 109 (19)	284kg 99 (10)	390kg 92 (10)	1680g/d 90 (13)	6.08 98	353mm (D1)	1.20

- 205D, 365D, 540D weights - adjusted weaning, year and 18 month weights, the phenotypic index obtained, and the number of animals in the contemporary group
- ADG and FCR Indices - phenotypic index obtained within the animal's contemporary group
- Scrotum - adjusted scrotal circumference, in mm, as measured at the end of the growth test, as well as the growth test type
- Length-Height Ratio (LH) - the animal's length to height ratio, as measured at the end of the growth test

LOGIX SELECTION VALUES

COW VALUE 108	
103	Calving Ease Value
118	Calf Growth Value
86	Milk Value
80	Maintenance Value
110	Fertility Value
GROWTH VALUE 105	
CARCASS VALUE 110	
PRODUCTION VALUE 103	



Logix Cow Value

Selection of:

- Fertile cows,
- with low maintenance,
- that calf easily,
- and wean heavy calves relative to own weight

Calving Ease Value

Low birth weight calves

Measurement: Birth weight
EBVs: Birth Weight Direct and Maternal

Calf Growth Value

Heavy weaner calves

Measurement: Weaning weight
EBVs: Weaning weight Direct

Milk Value

Good mothering ability

Measurement: Weaning weight
EBVs: Weaning weight Maternal

Maintenance Value

Low cow weight

Measurement: Mature cow weight, Weaning weight
EBVs: Mature weight + 10% Wean Maternal

Fertility Value

Fertile cows (calve early and regularly while family is retained in stud herds)

Measurement: Age at first calving, ICP and retention
EBVs: Heifer fertility, Cow fertility, and Longevity



Logix Growth Value

Selection for efficient growers on veld and in feedlot

Measurements: Phase C and D Growth test traits

EBVs: Weaning weight, End weight, ADG and Intake



Logix Carcass Value

Selection for higher meat yields on a carcass

Measurements: Phase C and D Growth test traits, RTU scanning traits

EBVs: End weight, Eye Muscle Area and Fat



Logix Production Value

Selection for profitable animals

80% of the Cow Value, and 20% of the Growth Value

HOW TO USE SELECTION VALUES

Logix Breeding Value Indices and Selection Values are versatile and can be used effectively to select various types of animals suitable for different environments and markets. Three examples of selection goals are shown. Always check all selection values for compatibility with your specific selection goal and never select only on the Cow Value.

AVERAGE ANIMALS

(NO GROWTH EXTREMES)

COW VALUE 115	
108	Calving Ease Value
106	Calf Growth Value
106	Milk Value
101	Maintenance Value
100	Fertility Value

- Selection Values 90 to 110
- Cow Value & Fertility Value average to high

A safe choice, as animals are profitable in most environments.

GROWERS

(GOOD ENVIRONMENT)

COW VALUE 115	
86	Calving Ease Value
122	Calf Growth Value
116	Milk Value
81	Maintenance Value
100	Fertility Value

- Calf Growth / Growth Value > 110
- Cow Value & Fertility Value average to high

Growers are heavier at birth (lower Calving Ease Value), and heavier at maturity (lower Maintenance Value).

LOW-MAINTENANCE ANIMALS

(HARSH ENVIRONMENT)

COW VALUE 115	
112	Calving Ease Value
96	Calf Growth Value
117	Milk Value
115	Maintenance Value
100	Fertility Value

- Maintenance Value > 110
- Cow Value & Fertility Value average to high

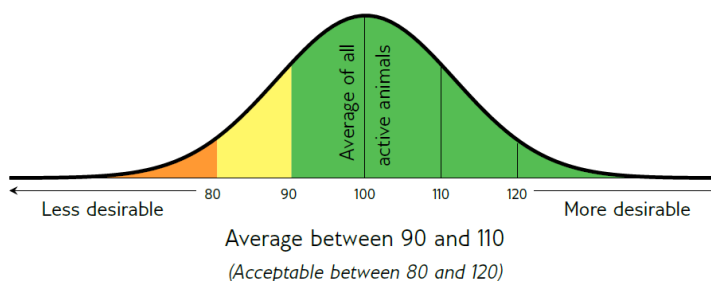
Lighter cows have a lower maintenance (higher Maintenance Value).

EXPLANATION OF BREEDING VALUES AND SELECTION VALUES

Traits	Description/Measurement	Goal	General Guidelines					
			<80	<90	90-110	>110	>120	
Selection Values	1 Cow Value	Combination of Calving Ease, Calf Growth, Milk, Maintenance and Fertility Values (Rand-Value)	Profitable Cow	Loss				Profit
	2 Calving Ease Value	Risk for calving problems (calf too heavy) vs calf too small	Avg. birth weight	High				Low
	3 Calf Growth Value	Calf's genetic ability for pre-weaning growth	Heavy weaner calf	Light				Heavy
	4 Milk Value	Cow's genetic mothering and milking ability	Enough milk for the calf	Less				More
	5 Maintenance Value	Maintenance requirements of cow (cow weight and milk)	Low cow maintenance	High			*	Low
	6 Fertility Value	Fertility and retention of cows and heifers	Fertile cows	Low				High
	7 Growth Value	Efficient growth on veld and in feedlot (R-value)	Profitable growth	Loss				Profit
	8 Carcass Value	Meat on carcass (Weight and RTU EBVs)	More meat on the carcass	Less				More
	9 Production Value	Combination of Cow- and Growth values (R-value)	Profitable animals	Loss				Profit
Cow & Heifer	10 Birth Weight Direct	Birth weight (Calf's genetic ability)	Avg. birth weight	Heavy				Light
	11 Birth Weight Maternal	Birth weight (Cow's genetic ability)	Easy calving	Heavy				Light
	12 Weaning Weight Direct	Weaning weight (Calf's genetic ability)	Heavy weaner calves	Light				Heavy
	13 Weaning Weight Maternal	Weaning weight (Cow's genetic ability)	Good mothers	Poor				Good
	21 Mature Cow Weight	Cow weight at weaning of first three calves	Avg. mature cow weight	Light		*	*	Heavy
	Cow-Calf Birth	EBV Birth Direct / EBV Mature Cow weight	Average	Low				High
Cow-Calf Wean	EBV Wean Direct / EBV Mature Cow weight	High calf-cow ratio	Low				High	
Fertility	14 Heifer Fertility	Age at first calving	Fertile heifers	Less				More
	15 Cow Fertility	First 3 inter-calving periods (ICPs)	Fertile cows	Less				More
	16 Scrotal Circumference	As measured during the growth test	Fertile bulls	Less				More
	17 Longevity	Retention of progeny	Acceptable progeny	Poor				Good
Growth & Frame	18 Post-Wean Weight	12- and 18 month weights	Good post-wean growth	Low			*	High
	19 Average Daily Gain	Average daily gain	Good growth	Poor				Good
	20 Feed Conversion Ratio	100g feed intake / g weight gain	Feed efficiency	Poor				Good
	Final Test Weight	Final weight in the growth test	Heavy carcass	Light			*	Heavy
	22 Height	Shoulder / Hip height in growth test	Average height	Short				Tall
	23 Length	Length in growth test	Longer for more muscle	Short				Long
	24 Length-Height Ratio	EBV Length / EBV Height	Longer rather than tall	<1				>1
Carcass	25 Eye Muscle Area	RTU measured eye muscle area	Bigger steaks	Small				Big
	26 Fat Thickness	RTU measured P8 backfat thickness	Carcass quality	Thin				Thick
	27 Marbling	RTU measured % of intra-muscular fat	Juicy meat	Low				High

* Determined by own selection goal

INTERPRETATION OF BREEDING VALUE INDICES



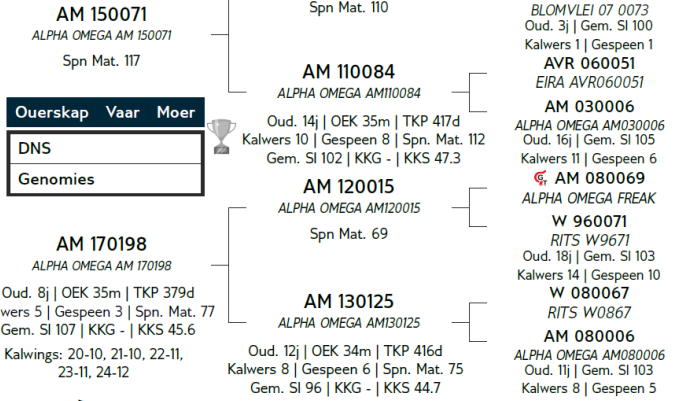
LOT 7 (M)



AM 230516
ALPHA OMEGA AM 230516



Kuddeboek	SP
Geb. dtm	2023-11-13
Oud.	2j 6m
Inteling	4%



ALPHA OMEGA TULI STUD PTY LTD

Burgersdorp, Eastern Cape
0834487870
alfaomegastoet@gmail.com

POSBUS 78, BURGERSDORP, 9744

KOEIWAARDE	104
85	Kalfgemak Waarde
116	Kalfgroei Waarde
95	Melk Waarde
83	Onderhoudswaarde
101	Vrugbaarheidswaarde
GROEI WAARDE	-
KARKAS WAARDE	90
PRODUKSIE WAARDE	-

LOGIX
EBV Analise 2026-05-17

Kalf en Moeder				Vrugbaarheid			
Geb. Dir.	Geb. Mat.	Spn. Dir.	Spn. Mat.	Skr. Omtr.	Vers Vrugb.	Koei Vrugb.	Lanklew.
85	100	116	95	103	106	98	98
74%	52%	71%	54%	34%	41%	21%	54%

Na-Speen Groei			Raam			Karkas		
Na-Speen	GDT	VOV	Volw. Gewig	Hoogte	Lengte	OSO	Vet	Mar
107	92	99	120	110	106	102	89	91
58%	26%	6%	48%	33%	29%	15%	16%	15%

Geb. Gewig	205D Gewig	365D Gewig	540D Gewig	GDT Indeks	VOV Indeks	Skrotum	LH
34kg	250kg 114 (20)	-	290kg 111 (19)	-	-	- (B2)	-



Miostatien	
Q204X	Nie Getoets
NT821	Nie Getoets
F94L	Nie Getoets

VERKOPER OPMERKINGS: Kleur Donkerrooi, Poenskop, Skrotum 41 Top bul met die hele pakket uit 'n goeie koei.

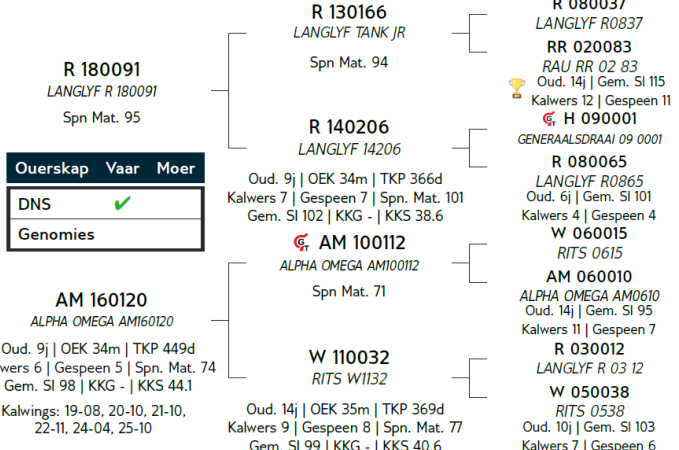
LOT 8 (M)



AM 240037
ALPHA OMEGA AM 240037



Kuddeboek	SP
Geb. dtm	2024-04-04
Oud.	2j 2m
Inteling	6%
DNS	U24258U016



ALPHA OMEGA TULI OOS

Dordrecht, Eastern Cape
0849411395
gertschmidt@nokwi.co.za

H/A HUMANSRUS BOERDERY BK, POSBUS
287, KLEINFONTEIN, DORDRECHT, 5435

KOEIWAARDE	94
99	Kalfgemak Waarde
107	Kalfgroei Waarde
84	Melk Waarde
81	Onderhoudswaarde
101	Vrugbaarheidswaarde
GROEI WAARDE	-
KARKAS WAARDE	98
PRODUKSIE WAARDE	-

LOGIX
EBV Analise 2026-05-17

Kalf en Moeder				Vrugbaarheid			
Geb. Dir.	Geb. Mat.	Spn. Dir.	Spn. Mat.	Skr. Omtr.	Vers Vrugb.	Koei Vrugb.	Lanklew.
103	86	107	84	85	93	104	108
73%	49%	58%	50%	29%	37%	22%	49%

Na-Speen Groei			Raam			Karkas		
Na-Speen	GDT	VOV	Volw. Gewig	Hoogte	Lengte	OSO	Vet	Mar
106	95	87	124	90	100	92	89	95
52%	26%	6%	48%	29%	27%	22%	24%	22%

Geb. Gewig	205D Gewig	365D Gewig	540D Gewig	GDT Indeks	VOV Indeks	Skrotum	LH
30kg	206kg 100 (1)	263kg 103 (3)	-	-	-	- (B1)	-



Miostatien	
Q204X	Nie Getoets
NT821	Nie Getoets
F94L	Nie Getoets

VERKOPER OPMERKINGS: Kleur geel, Poenskop, Skrotum 31 Bul met goeie balans



LOT 9 (M)



AM 230524
ALPHA OMEGA AM 230524



Herd Book	SP
Birth date	2023-11-18
Age	2y 6m
Inbreeding	7%

AM 190021
ALPHA OMEGA AM 190021
Wean Mat. 92

Parentage	Sire	Dam
DNA		
Genomic		

AVR 130081
EIRA AVR1381
Age 12y | AFC 28m | ICP 398d
Calves 9 | Weaned 8 | Wean Mat. 97
Avg. WI 98 | CCB - | CCW 46.3
Calvings: 16-04, 17-09, 18-09,
19-09, 20-10, 21-10, 22-10, 23-11,
25-01

AM 110102
ALPHA OMEGA AM110102
Wean Mat. 94

AM 140048
ALPHA OMEGA AM140048
Age 5y | AFC 35m | ICP 438d
Calves 3 | Weaned 2 | Wean Mat. 88
Avg. WI 98 | CCB - | CCW 47.5

H 030073
GENERAALSDRAAI 03 73
Wean Mat. 80

AVR 080031
EIRA AVR831
Age 9y | AFC - | ICP 426d
Calves 6 | Weaned 5 | Wean Mat. 115
Avg. WI 109 | CCB - | CCW 52.1

H 050089
GENERAALSDRAAI 05 89 - BUFFEL
HBH 061029
HBH HBH 061029
Age 10y | Avg. WI 111
Calves 7 | Weaned 6
AM 100112
ALPHA OMEGA AM100112
AM 110064
ALPHA OMEGA AM110064
Age 14y | Avg. WI 103
Calves 10 | Weaned 9
CR 990035
NONNIE 9935
H 950049
GENERAALSDRAAI 95 49
Age 13y | Avg. WI 105
Calves 10 | Weaned 10
W 030013
RITS 0313

ALPHA OMEGA TULI STUD PTY LTD

Burgersdorp, Eastern Cape
0834487870
alfaenomegastoet@gmail.com

POSBUS 78, BURGERSDORP, 9744

COW VALUE 87

101	Calving Ease Value
84	Calf Growth Value
96	Milk Value
108	Maintenance Value
101	Fertility Value

GROWTH VALUE 96

CARCASS VALUE 85

PRODUCTION VALUE 87



EBV Analysis 2026-05-17

Calf and Mother				Fertility			
Birth Dir.	Birth Mat.	Wean Dir.	Wean Mat.	Scr. Circ.	Heifer Fert.	Cow Fert.	Longev.
101	98	84	96	93	102	101	99
72%	46%	69%	50%	34%	32%	23%	50%

Post-Wean Growth			Frame			Carcass		
Post Wean	ADG	FCR	Mature Weight	Height	Length	EMA	Fat	Mar
82	94	100	91	88	88	75	88	106
56%	31%	8%	46%	33%	31%	24%	25%	24%

Birth Weight	205D Weight	365D Weight	540D Weight	ADG Index	FCR Index	Scrotum	LH
30kg	203kg 92 (20)	-	248kg 97 (19)	-	-	- (B2)	-



Myostatin	
Q204X	Not Tested
NT821	Not Tested
F94L	Not Tested

SELLER REMARKS: Kleur Geel, Poenskop Skrotum 40 'n Hard bespiede bul uit 'n top kei

LOT 10 (M)



AM 220042
ALPHA OMEGA 220042



Herd Book	SP
Birth date	2022-10-26
Age	3y 7m
Inbreeding	6%
DNA	U17374U012

AM 130144
ALPHA OMEGA AM130144
Wean Mat. 88

Parentage	Sire	Dam
DNA		
Genomic		

AM 190121
ALPHA OMEGA AM 190121
Age 6y | AFC 36m | ICP 375d
Calves 4 | Weaned 2 | Wean Mat. 82
Avg. WI 98 | CCB - | CCW -
Calvings: 22-10, 23-10, 24-11, 25-11

H 050089
GENERAALSDRAAI 05 89 - BUFFEL
Wean Mat. 95

AM 060010
ALPHA OMEGA AM06010
Age 14y | AFC 27m | ICP 369d
Calves 11 | Weaned 7 | Wean Mat. 76
Avg. WI 95 | CCB - | CCW 42.2

CHK 100138
CASMAN CHKK100138
Wean Mat. 63

AM 150158
ALPHA OMEGA AM15158
Age 10y | AFC 35m | ICP 378d
Calves 8 | Weaned 6 | Wean Mat. 107
Avg. WI 109 | CCB - | CCW 41.9

H 990022
GENERAALSDRAAI 99 22
H 980036
GENERAALSDRAAI 98 36
Age 13y | Avg. WI 120
Calves 10 | Weaned 7
H 030073
GENERAALSDRAAI 03 73
AM 030006
ALPHA OMEGA AM030006
Age 16y | Avg. WI 105
Calves 11 | Weaned 6
CR 030069
NONNIE 03 69 POFADDER
CHK 070251
CASMAN K070251
Age 15y | Avg. WI 97
Calves 13 | Weaned 10
ASE 090026
BUROWILL 09-0026
W 110032
RITS W1132
Age 14y | Avg. WI 99
Calves 9 | Weaned 8

ALPHA OMEGA TULI OOS

Dordrecht, Eastern Cape
0849411395
gertschmidt@nokwi.co.za

H/A HUMANSRUS BOERDERY BK, POSBUS
287, KLEINFORTEIN, DORDRECHT, 5435

COW VALUE 96

100	Calving Ease Value
109	Calf Growth Value
81	Milk Value
92	Maintenance Value
98	Fertility Value

GROWTH VALUE 94

CARCASS VALUE 99

PRODUCTION VALUE 94



EBV Analysis 2026-05-17

Calf and Mother				Fertility			
Birth Dir.	Birth Mat.	Wean Dir.	Wean Mat.	Scr. Circ.	Heifer Fert.	Cow Fert.	Longev.
98	109	109	81	85	81	104	99
75%	55%	70%	56%	47%	44%	28%	56%

Post-Wean Growth			Frame			Carcass		
Post Wean	ADG	FCR	Mature Weight	Height	Length	EMA	Fat	Mar
102	99	99	109	93	98	96	87	106
56%	43%	9%	52%	47%	44%	40%	43%	40%

Birth Weight	205D Weight	365D Weight	540D Weight	ADG Index	FCR Index	Scrotum	LH
27kg	185kg 124 (21)	-	323kg 100 (1)	-	-	- (B2)	-



Myostatin	
Q204X	Not Tested
NT821	Not Tested
F94L	Not Tested

SELLER REMARKS: Kleur Geel, Poenskop, Skrotum 32 Geharde bul in hoedruk beweiende gebruik met goeie resultate



LOT 11 (M)



AM 230072
ALPHA OMEGA AM 230072



Kuddeboek	SP
Geb. dtm	2023-10-11
Oud.	2j 8m
Inteling	6%

AM 190021
ALPHA OMEGA AM 190021
Spn Mat. 92

Ouerskap	Vaar	Moer
DNS		
Genomies		

AM 190034
ALPHA OMEGA AM 190034
Oud. 6j | OEK 39m | TKP 367d
Kalwers 3 | Gespeen 1 | Spn. Mat. 88
Gem. SI 111 | KKG - | KKS 57.3
Kalwings: 22-11, 23-10, 24-11

AM 110102
ALPHA OMEGA AM110102
Spn Mat. 94

AM 140048
ALPHA OMEGA AM140048
Oud. 5j | OEK 35m | TKP 438d
Kalwers 3 | Gespeen 2 | Spn. Mat. 88
Gem. SI 98 | KKG - | KKS 47.5

AM 150071
ALPHA OMEGA AM 150071
Spn Mat. 117

W 140009
RITS W 140009
Oud. 11j | OEK 37m | TKP 385d
Kalwers 9 | Gespeen 7 | Spn. Mat. 38
Gem. SI 72 | KKG - | KKS 38.7

H 050089
GENERAALSDRAAI 05 89 - BUFFEL
HBH 061029
HBH HBH 061029
Oud. 10j | Gem. SI 111
Kalwers 7 | Gespeen 6
AM 100112
ALPHA OMEGA AM100112
AM 110064
ALPHA OMEGA AM110064
Oud. 14j | Gem. SI 103
Kalwers 10 | Gespeen 9
SW 100022
BLOMVLEI 10 0022
AM 110084
ALPHA OMEGA AM110084
Oud. 14j | Gem. SI 102
Kalwers 10 | Gespeen 8
W 070047
RITS W0747
W 060027
RITS 0627
Oud. 11j | Gem. SI 106
Kalwers 7 | Gespeen 7

ALPHA OMEGA TULI STUD PTY LTD

Burgersdorp, Eastern Cape
0834487870
alfaenomegastoet@gmail.com

POSBUS 78, BURGERSDORP, 9744

KOEIWAARDE	83
82	Kalfgemak Waarde
104	Kalfgroei Waarde
87	Melk Waarde
92	Onderhoudswaarde
89	Vrugbaarheidswaarde
GROEI WAARDE	-
KARKAS WAARDE	86
PRODUKSIE WAARDE	-



Kalf en Moeder				Vrugbaarheid			
Geb. Dir.	Geb. Mat.	Spn. Dir.	Spn. Mat.	Skr. Omtr.	Vers Vrugb.	Koei Vrugb.	Lanklew.
85	88	104	87	90	96	88	97
72%	42%	66%	43%	26%	30%	18%	46%

Na-Speen Groei			Raam			Karkas		
Na-Speen	GDT	VOV	Volw. Gewig	Hoogte	Lengte	OSO	Vet	Mar
95	83	85	108	85	87	90	90	99
42%	23%	6%	43%	26%	24%	19%	20%	19%

Geb. Gewig	205D Gewig	365D Gewig	540D Gewig	GDT Indeks	VOV Indeks	Skrotum	LH
35kg	244kg 111 (20)	-	304kg 100 (1)	-	-	(B2)	-



Miostatien	
Q204X	Nie Getoets
NT821	Nie Getoets
F94L	Nie Getoets

VERKOPER OPMERKINGS: Kleur Geel, Poenskop, Skrotum 41 Hierdie bul is so lank soos 'n trein. Moet hom nie mis nie.

LOT 12 (M)



AM 220071
ALPHA OMEGA 220071



Kuddeboek	SP
Geb. dtm	2022-11-11
Oud.	3j 6m
Inteling	5%
DNS	U17374U032

AM 150071
ALPHA OMEGA AM 150071
Spn Mat. 117

Ouerskap	Vaar	Moer
DNS		
Genomies		

AM 120140
ALPHA OMEGA AM120140
Oud. 13j | OEK 35m | TKP 382d
Kalwers 10 | Gespeen 9 | Spn. Mat. 103
Gem. SI 107 | KKG - | KKS 51.3
Kalwings: 15-09, 16-10, 17-09, 18-09, 19-09, 20-09, 21-10, 22-11, 23-11, 25-02

SW 100022
BLOMVLEI 10 0022
Spn Mat. 110

AM 110084
ALPHA OMEGA AM110084
Oud. 14j | OEK 35m | TKP 417d
Kalwers 10 | Gespeen 8 | Spn. Mat. 112
Gem. SI 102 | KKG - | KKS 47.3

AM 090014
ALPHA OMEGA AM 090014
Spn Mat. 94

V 080142
AMELIA V080142
Oud. 11j | OEK 34m | TKP 371d
Kalwers 9 | Gespeen 9 | Spn. Mat. 94
Gem. SI 103 | KKG - | KKS 42.7

SW 060039
BLOMVLEI 06 0039
SW 070073
BLOMVLEI 07 0073
Oud. 3j | Gem. SI 100
Kalwers 1 | Gespeen 1
AVR 060051
EIRA AVR060051
AM 030006
ALPHA OMEGA AM030006
Oud. 16j | Gem. SI 105
Kalwers 11 | Gespeen 6
H 030073
GENERAALSDRAAI 03 73
AJR 940010
LANGLYF AJR 94 010
Oud. 18j | Gem. SI 106
Kalwers 14 | Gespeen 13
AM 050009
ALPHA OMEGA AM050009
V 050031
AMELIA 05 0031
Oud. 10j | Gem. SI 97
Kalwers 8 | Gespeen 7

ALPHA OMEGA TULI OOS

Dordrecht, Eastern Cape
0849411395
gertschmidt@nokwi.co.za

H/A HUMANSRUS BOERDERY BK, POSBUS
287, KLEINFONTEIN, DORDRECHT, 5435

KOEIWAARDE	113
98	Kalfgemak Waarde
96	Kalfgroei Waarde
111	Melk Waarde
101	Onderhoudswaarde
116	Vrugbaarheidswaarde
GROEI WAARDE	92
KARKAS WAARDE	94
PRODUKSIE WAARDE	109



Kalf en Moeder				Vrugbaarheid			
Geb. Dir.	Geb. Mat.	Spn. Dir.	Spn. Mat.	Skr. Omtr.	Vers Vrugb.	Koei Vrugb.	Lanklew.
97	101	96	111	105	130	108	103
75%	56%	73%	59%	40%	43%	24%	56%

Na-Speen Groei			Raam			Karkas		
Na-Speen	GDT	VOV	Volw. Gewig	Hoogte	Lengte	OSO	Vet	Mar
88	99	97	96	100	98	111	89	96
56%	31%	5%	51%	39%	34%	21%	23%	21%

Geb. Gewig	205D Gewig	365D Gewig	540D Gewig	GDT Indeks	VOV Indeks	Skrotum	LH
32kg	153kg 95 (21)	-	243kg 100 (1)	-	-	(B2)	-



Miostatien	
Q204X	Nie Getoets
NT821	Nie Getoets
F94L	Nie Getoets

VERKOPER OPMERKINGS: Kleur Rooi, Poena, Skrotum 36 Ulstekende ma (AM120140 Elite Goue tekenning 2026) Bul met goeie syfers en mooi bespiering.

LOT 13 (M)



AM 230512
ALPHA OMEGA AM 230512



Herd Book	SP
Birth date	2023-11-13
Age	2y 6m
Inbreeding	4%

ALPHA OMEGA TULI STUD PTY LTD

Burgersdorp, Eastern Cape
0834487870
alfaomegastoet@gmail.com

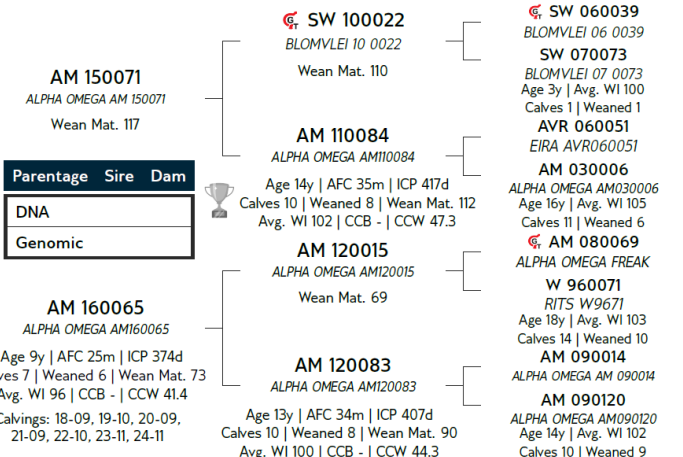
POSBUS 78, BURGERSDORP, 9744



Myostatin	
Q204X	Not Tested
NT821	Not Tested
F94L	Not Tested

COW VALUE 101	
90	Calving Ease Value
103	Calf Growth Value
94	Milk Value
87	Maintenance Value
110	Fertility Value
GROWTH VALUE -	
CARCASS VALUE 83	
PRODUCTION VALUE -	

Birth Weight	205D Weight	365D Weight	540D Weight	ADG Index	FCR Index	Scrotum	LH
32kg	225kg 102 (20)	-	258kg 98 (19)	-	-	-(B2)	-



Calf and Mother				Fertility				
Birth Dir.	Birth Mat.	Wean Dir.	Wean Mat.	Scr. Circ.	Heifer Fert.	Cow Fert.	Longev.	
93	92	103	94	101	121	104	100	
75%	54%	71%	56%	37%	41%	21%	54%	
Post-Wean Growth			Frame			Carcass		
Post Wean	ADG	FCR	Mature Weight	Height	Length	EMA	Fat	Mar
92	90	-	114	103	99	98	87	90
60%	28%	-	50%	36%	31%	14%	16%	14%

SELLER REMARKS: Kleur Rooi, Poenskop, Skrotum 37

LOT 14 (M)



AM 230271
ALPHA OMEGA AM 230271



Herd Book	SP
Birth date	2023-11-10
Age	2y 6m
Inbreeding	6%
DNA U24258U022	

ALPHA OMEGA TULI OOS

Dordrecht, Eastern Cape
0849411395
gertschmidt@nokwi.co.za

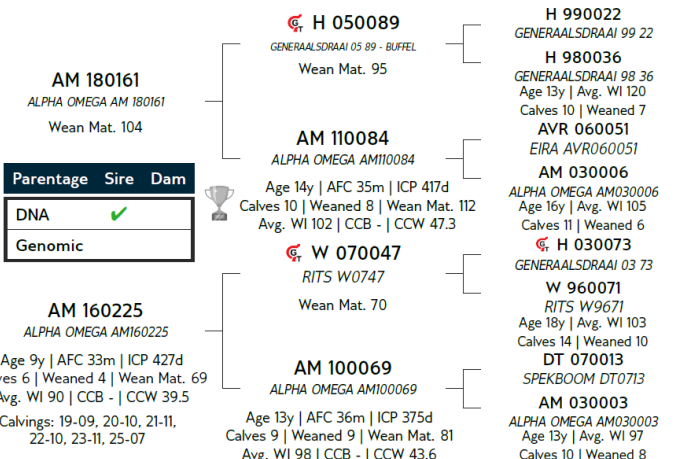
H/A HUMANSRUS BOERDERY BK, POSBUS
287, KLEINFONTEIN, DORDRECHT, 5435



Myostatin	
Q204X	Not Tested
NT821	Not Tested
F94L	Not Tested

COW VALUE 89	
105	Calving Ease Value
98	Calf Growth Value
85	Milk Value
93	Maintenance Value
97	Fertility Value
GROWTH VALUE 84	
CARCASS VALUE 91	
PRODUCTION VALUE 86	

Birth Weight	205D Weight	365D Weight	540D Weight	ADG Index	FCR Index	Scrotum	LH
29kg	182kg 95 (30)	225kg 103 (31)	284kg 94 (15)	-	-	-(B2)	-



Calf and Mother				Fertility				
Birth Dir.	Birth Mat.	Wean Dir.	Wean Mat.	Scr. Circ.	Heifer Fert.	Cow Fert.	Longev.	
107	94	98	85	90	91	99	95	
74%	49%	70%	51%	34%	38%	26%	52%	
Post-Wean Growth			Frame			Carcass		
Post Wean	ADG	FCR	Mature Weight	Height	Length	EMA	Fat	Mar
97	89	89	108	86	88	95	96	111
69%	31%	9%	48%	33%	32%	26%	27%	26%

SELLER REMARKS: Kleur dagga., Poenskop , Skrotum 32 Bul dra baie vleis, die bul se ma teel besonders goed



LOT 15 (M)



AM 230083
ALPHA OMEGA AM 230083



Kuddeboek	B
Geb. dtm	2023-10-17
Oud.	2j 7m
Inteling	3%

GH 170001
GLEN HEATH GH170001
Spn Mat. 123

Ouerskap	Vaar	Moer
DNS		
Genomies		

AM 200137
ALPHA OMEGA AM 200137
Oud. 4j | OEK - | TKP -
Kalwers 1 | Gespeen 1 | Spn. Mat. 112
Gem. SI 107 | KKG - | KKS 60.6
Kalwings: 23-10

HBH 140043
HBH HBH140043
Spn Mat. 111

GH 140018
GLEN HEATH GH140018
Oud. 7j | OEK 35m | TKP 389d
Kalwers 5 | Gespeen 5 | Spn. Mat. 111
Gem. SI 109 | KKG - | KKS 45.3

ST 150005
SHASHI ST 150005
Spn Mat. 106

AM 170172
ALPHA OMEGA AM 170172
Oud. 5j | OEK 35m | TKP -
Kalwers 1 | Gespeen - | Spn. Mat. 112
Gem. SI - | KKG - | KKS -

H 050089
GENERALSDRAAI 05 89 - BUFFEL
HBH 061011
HBH HBH 061011
Oud. 13j | Gem. SI 104
Kalwers 11 | Gespeen 11
ASE 061013
BUROWILL ASE 06 103
GH 090002
GH 090002
Oud. 9j | Gem. SI 94
Kalwers 7 | Gespeen 6
CR 070021
NONNIE CR0721
T 090079
PAVO T 090079
Oud. 8j | Gem. SI 115
Kalwers 5 | Gespeen 3
SW 100022
BLOMVLEI 10 0022
V 070091
AMELIA V070091
Oud. 16j | Gem. SI 105
Kalwers 11 | Gespeen 9

ALPHA OMEGA TULI STUD PTY LTD

Burgersdorp, Eastern Cape
0834487870
alfaomegastoet@gmail.com

POSBUS 78, BURGERSDORP, 9744

KOEIWAARDE 111
92 Kalfgemak Waarde
102 Kalfgroei Waarde
117 Melk Waarde
99 Onderhoudswaarde
106 Vrugaarheidswaarde
GROEI WAARDE 104
KARKAS WAARDE 106
PRODUKSIE WAARDE 110



Kalf en Moeder				Vrugaarheid			
Geb. Dir.	Geb. Mat.	Spn. Dir.	Spn. Mat.	Skr. Omtr.	Vers Vrugg.	Koei Vrugg.	Lanklew.
93	95	102	117	103	102	106	101
73%	46%	68%	49%	38%	36%	19%	50%

Na-Speen Groei			Raam			Karkas		
Na-Speen	GDT	VOV	Volw. Gewig	Hoogte	Lengte	OSO	Vet	Mar
95	106	106	98	109	103	113	129	97
67%	32%	5%	53%	37%	33%	27%	31%	27%

Geb. Gewig	205D Gewig	365D Gewig	540D Gewig	GDT Indeks	VOV Indeks	Skrotum	LH
34kg	237kg 107 (20)	214kg 106 (7)	278kg 112 (16)	-	-	-(B2)	-



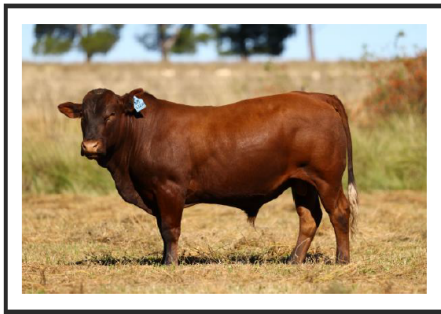
Miostation
Q204X Nie Getoets
NT821 Nie Getoets
F94L Nie Getoets

VERKOPER OPMERKINGS: Kleur Dagha, Poenskop, Skrotum 42

LOT 16 (M)



AM 230288
ALPHA OMEGA AM 230288



Kuddeboek	SP
Geb. dtm	2023-11-24
Oud.	2j 6m
Inteling	5%
DNS	U24258U013

AM 190158
ALPHA OMEGA AM 190158
Spn Mat. 104

Ouerskap	Vaar	Moer
DNS	✓	
Genomies		

AM 140052
ALPHA OMEGA AM140052
Oud. 11j | OEK 35m | TKP 407d
Kalwers 8 | Gespeen 7 | Spn. Mat. 93
Gem. SI 100 | KKG - | KKS 43.5
Kalwings: 17-09, 18-10, 19-11, 20-09, 21-10, 22-11, 23-11, 25-07

AM 150071
ALPHA OMEGA AM 150071
Spn Mat. 117

AM 160078
ALPHA OMEGA AM160078
Oud. 7j | OEK 25m | TKP 377d
Kalwers 3 | Gespeen 3 | Spn. Mat. 102
Gem. SI 122 | KKG - | KKS 54.8

AM 100112
ALPHA OMEGA AM100112
Spn Mat. 71

AM 110097
ALPHA OMEGA AM110097
Oud. 4j | OEK 35m | TKP -
Kalwers 1 | Gespeen 1 | Spn. Mat. 110
Gem. SI 105 | KKG - | KKS 47.5

SW 100022
BLOMVLEI 10 0022
AM 110084
ALPHA OMEGA AM110084
Oud. 14j | Gem. SI 102
Kalwers 10 | Gespeen 8
HBH 060999
HBH HBH 060999
ASE 080001
BUROWILL 08-0001
Oud. 11j | Gem. SI 96
Kalwers 8 | Gespeen 8
W 060015
RITS 0615
AM 060010
ALPHA OMEGA AM0610
Oud. 14j | Gem. SI 95
Kalwers 11 | Gespeen 7
W 070031
RITS 731
ASE 010035
BUROWILL 01 35
Oud. 16j | Gem. SI 97
Kalwers 14 | Gespeen 11

ALPHA OMEGA TULI OOS

Dordrecht, Eastern Cape
0849411395
gertschmidt@nokwi.co.za

H/A HUMANSRUS BOERDERY BK, POSBUS
287, KLEINFONTEIN, DORDRECHT, 5435

KOEIWAARDE 106
103 Kalfgemak Waarde
110 Kalfgroei Waarde
98 Melk Waarde
84 Onderhoudswaarde
103 Vrugaarheidswaarde
GROEI WAARDE -
KARKAS WAARDE 106
PRODUKSIE WAARDE -



Kalf en Moeder				Vrugaarheid			
Geb. Dir.	Geb. Mat.	Spn. Dir.	Spn. Mat.	Skr. Omtr.	Vers Vrugg.	Koei Vrugg.	Lanklew.
103	99	110	98	100	112	98	101
74%	47%	69%	50%	32%	35%	20%	49%

Na-Speen Groei			Raam			Karkas		
Na-Speen	GDT	VOV	Volw. Gewig	Hoogte	Lengte	OSO	Vet	Mar
102	99	-	118	97	108	101	96	92
68%	27%		45%	31%	28%	22%	24%	22%

Geb. Gewig	205D Gewig	365D Gewig	540D Gewig	GDT Indeks	VOV Indeks	Skrotum	LH
30kg	196kg 103 (30)	221kg 100 (31)	291kg 97 (15)	-	-	-(B2)	-



Miostation
Q204X Nie Getoets
NT821 Nie Getoets
F94L Nie Getoets

VERKOPER OPMERKINGS: Kleur Rooi, Poenskop, Scrotum 34 Kort en dik bul



LOT 17 (M)



AM 230503
ALPHA OMEGA AM 230503



Herd Book	SP
Birth date	2023-11-04
Age	2y 7m
Inbreeding	4%

ALPHA OMEGA TULI STUD PTY LTD

Burgersdorp, Eastern Cape
0834487870
alfaomegastoet@gmail.com

POSBUS 78,,BURGERSDORP, 9744

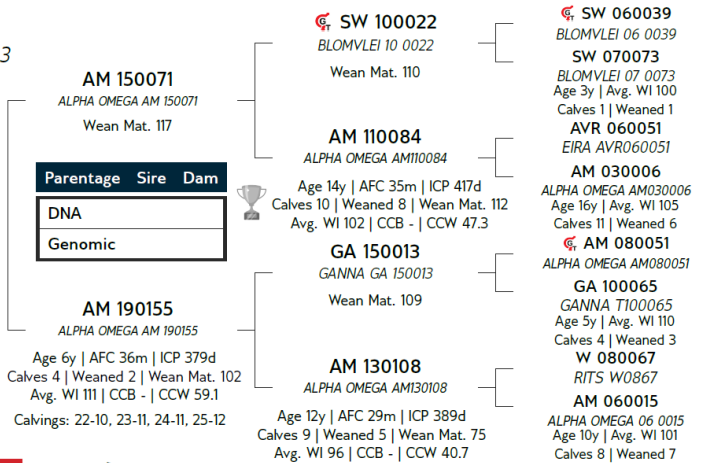


Myostatin	
Q204X	Not Tested
NT82I	Not Tested
F94L	Not Tested

COW VALUE 103	
94	Calving Ease Value
98	Calf Growth Value
110	Milk Value
96	Maintenance Value
104	Fertility Value
GROWTH VALUE -	
CARCASS VALUE 90	
PRODUCTION VALUE -	

Birth Weight	205D Weight	365D Weight	540D Weight	ADG Index	FCR Index	Scrotum	LH
32kg	228kg 104 (20)	-	261kg 104 (19)	-	-	-(B2)	-

SELLER REMARKS: Kleur Rooi Poenskop, Skrotum 40 'n Bul met baie goeie syfers.



EBV Analysis: 2026-05-17

Calf and Mother				Fertility			
Birth Dir.	Birth Mat.	Wean Dir.	Wean Mat.	Scr. Circ.	Heifer Fert.	Cow Fert.	Longev.
99	82	98	110	104	114	100	98
74%	51%	71%	52%	33%	41%	20%	53%

Post-Wean Growth			Frame			Carcass		
Post Wean	ADG	FCR	Mature Weight	Height	Length	EMA	Fat	Mar
103	97	103	102	105	101	94	90	95
62%	24%	6%	48%	32%	28%	13%	15%	13%

LOT 18 (M)



AM 220076
ALPHA OMEGA 220076



Herd Book	SP
Birth date	2022-11-14
Age	3y 6m
Inbreeding	5%
DNA	U17374U036

ALPHA OMEGA TULI OOS

Dordrecht, Eastern Cape
0849411395
gertschmidt@nokwi.co.za

H/A HUMANSRUS BOERDERY BK, POSBUS
287, KLEINFONTEIN, DORDRECHT, 5435

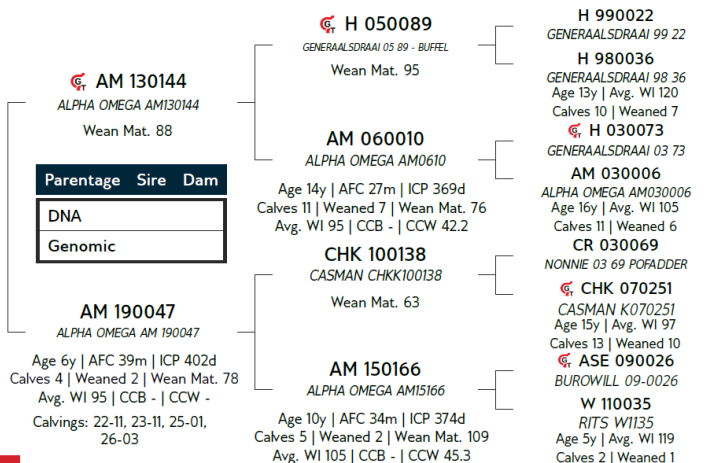


Myostatin	
Q204X	Not Tested
NT82I	Not Tested
F94L	Not Tested

COW VALUE 96	
81	Calving Ease Value
107	Calf Growth Value
85	Milk Value
103	Maintenance Value
101	Fertility Value
GROWTH VALUE 93	
CARCASS VALUE 91	
PRODUCTION VALUE 94	

Birth Weight	205D Weight	365D Weight	540D Weight	ADG Index	FCR Index	Scrotum	LH
36kg	157kg 95 (21)	252kg 117 (4)	271kg 111 (21)	-	-	-(B2)	-

SELLER REMARKS: Kleur Rooi, Poenskop, Skrotum 35



EBV Analysis: 2026-05-17

Calf and Mother				Fertility			
Birth Dir.	Birth Mat.	Wean Dir.	Wean Mat.	Scr. Circ.	Heifer Fert.	Cow Fert.	Longev.
81	101	107	85	87	86	105	96
74%	54%	71%	56%	47%	46%	29%	56%

Post-Wean Growth			Frame			Carcass		
Post Wean	ADG	FCR	Mature Weight	Height	Length	EMA	Fat	Mar
106	98	107	96	92	97	90	86	105
64%	43%	9%	52%	46%	43%	40%	43%	40%



LOT 19 (M)



AM 230508
ALPHA OMEGA AM 230508



Kuddeboek	SP
Geb. dtm	2023-11-08
Oud.	2j 7m
Inteling	4%

ALPHA OMEGA TULI STUD PTY LTD

Burgersdorp, Eastern Cape
0834487870
alfaomegastoet@gmail.com

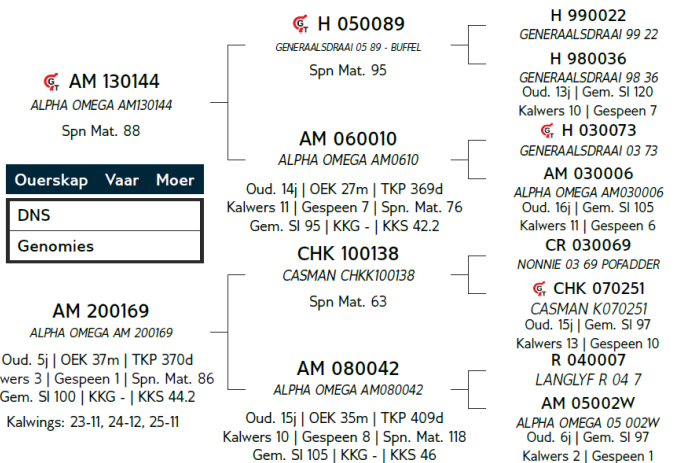
POSBUS 78, BURGERSDORP, 9744



Miostation	
Q204X	Nie Getoets
NT821	Nie Getoets
F94L	Nie Getoets

KOEIWAARDE 94	
81	Kalfgemak Waarde
102	Kalfgroei Waarde
88	Melk Waarde
96	Onderhoudswaarde
105	Vrugbaarheidswaarde
GROEI WAARDE 97	
KARKAS WAARDE 95	
PRODUKSIE WAARDE 93	

Geb. Gewig	205D Gewig	365D Gewig	540D Gewig	GDT Indeks	VOV Indeks	Skrotum	LH
36kg	225kg 100 (20)	-	242kg 98 (19)	-	-	-(B2)	-



Kalf en Moeder				Vrugbaarheid			
Geb. Dir.	Geb. Mat.	Spn. Dir.	Spn. Mat.	Skr. Omtr.	Vers Vrugb.	Koei Vrugb.	Lanklew.
82	99	102	88	76	84	111	98
74%	54%	71%	55%	47%	45%	29%	56%

Na-Speen Groei			Raam			Karkas		
Na-Speen	GDT	VOV	Volw. Gewig	Hoogte	Lengte	OSO	Vet	Mar
99	97	98	104	93	93	90	94	101
64%	43%	9%	56%	46%	43%	39%	42%	40%

VERKOPER OPMERKINGS: Kleur Geel, Poenskop, Skrotum 40

LOT 20 (M)



AM 220054
ALPHA OMEGA 220054



Kuddeboek	SP
Geb. dtm	2022-10-31
Oud.	3j 7m
Inteling	5%

ALPHA OMEGA TULI OOS

Dordrecht, Eastern Cape
0849411395
gertschmidt@nokwi.co.za

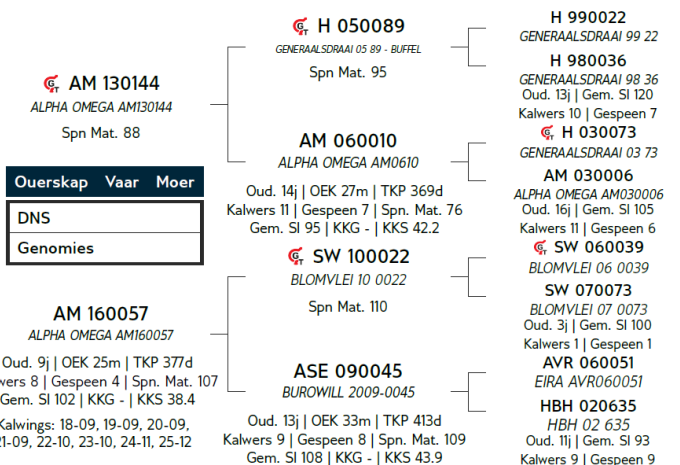
H/A HUMANSRUS BOERDERY BK, POSBUS
287, KLEINFONTEIN, DORDRECHT, 5435



Miostation	
Q204X	Nie Getoets
NT821	Nie Getoets
F94L	Nie Getoets

KOEIWAARDE 119	
83	Kalfgemak Waarde
132	Kalfgroei Waarde
91	Melk Waarde
72	Onderhoudswaarde
112	Vrugbaarheidswaarde
GROEI WAARDE 97	
KARKAS WAARDE 112	
PRODUKSIE WAARDE 116	

Geb. Gewig	205D Gewig	365D Gewig	540D Gewig	GDT Indeks	VOV Indeks	Skrotum	LH
34kg	221kg 147 (21)	-	401kg 100 (1)	-	-	-(B2)	-



Kalf en Moeder				Vrugbaarheid			
Geb. Dir.	Geb. Mat.	Spn. Dir.	Spn. Mat.	Skr. Omtr.	Vers Vrugb.	Koei Vrugb.	Lanklew.
81	106	132	91	93	100	113	99
75%	58%	72%	59%	49%	47%	28%	57%

Na-Speen Groei			Raam			Karkas		
Na-Speen	GDT	VOV	Volw. Gewig	Hoogte	Lengte	OSO	Vet	Mar
119	108	104	136	109	115	103	88	100
58%	43%	9%	56%	48%	45%	40%	42%	40%

VERKOPER OPMERKINGS: Kleur Rooi. Poenskop, Skrotum 38 Baie goeie syfers, koei waarde van 118



LOT 21 (M)



AM 230531
ALPHA OMEGA AM 230531



Herd Book	SP
Birth date	2023-11-24
Age	2y 6m
Inbreeding	4%

ALPHA OMEGA TULI STUD PTY LTD

Burgersdorp, Eastern Cape
0834487870
alfaomegastoet@gmail.com

POSBUS 78, BURGERSDORP, 9744

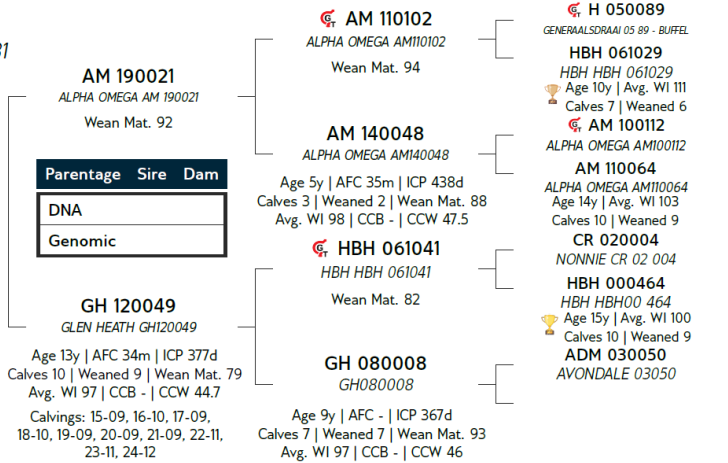


Myostatin	
Q204X	Not Tested
NT821	Not Tested
F94L	Not Tested

COW VALUE 86	
80	Calving Ease Value
97	Calf Growth Value
85	Milk Value
98	Maintenance Value
102	Fertility Value
GROWTH VALUE -	
CARCASS VALUE 81	
PRODUCTION VALUE -	

Birth Weight	205D Weight	365D Weight	540D Weight	ADG Index	FCR Index	Scrotum	LH
35kg	233kg 105 (20)	-	269kg 104 (19)	-	-	-(B2)	-

SELLER REMARKS: Kleur Geel, Poenskop, Skrotum 40



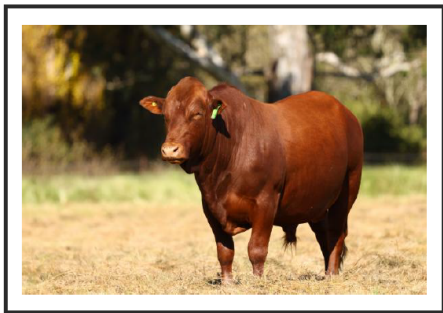
Calf and Mother				Fertility			
Birth Dir.	Birth Mat.	Wean Dir.	Wean Mat.	Scr. Circ.	Heifer Fert.	Cow Fert.	Longev.
84	86	97	85	74	112	98	105
73%	49%	69%	51%	32%	35%	20%	50%

Post-Wean Growth			Frame			Carcass		
Post Wean	ADG	FCR	Mature Weight	Height	Length	EMA	Fat	Mar
91	87	89	102	87	85	78	97	98
56%	28%	5%	47%	31%	28%	23%	25%	23%

LOT 22 (M)



AM 220037
ALPHA OMEGA 220037



Herd Book	SP
Birth date	2022-10-24
Age	3y 7m
Inbreeding	3%
DNA	U17374U009

ALPHA OMEGA TULI OOS

Dordrecht, Eastern Cape
0849411395
gertschmidt@nokwi.co.za

H/A HUMANSRUS BOERDERY BK, POSBUS
287, KLEINFONTEIN, DORDRECHT, 5435

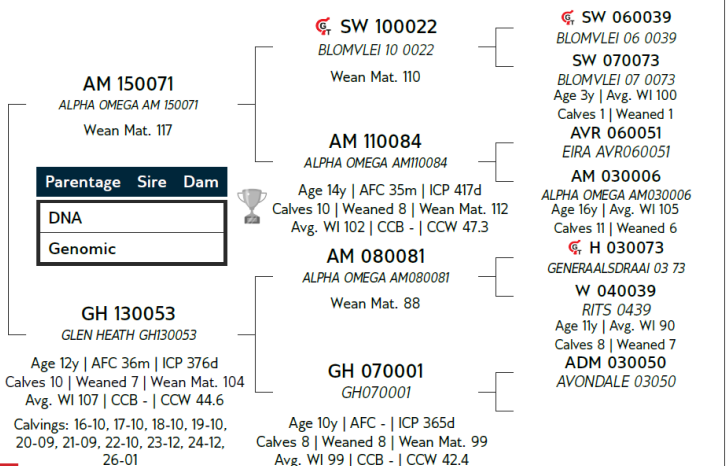


Myostatin	
Q204X	Not Tested
NT821	Not Tested
F94L	Not Tested

COW VALUE 101	
79	Calving Ease Value
101	Calf Growth Value
111	Milk Value
90	Maintenance Value
103	Fertility Value
GROWTH VALUE 93	
CARCASS VALUE 89	
PRODUCTION VALUE 98	

Birth Weight	205D Weight	365D Weight	540D Weight	ADG Index	FCR Index	Scrotum	LH
36kg	174kg 109 (21)	214kg 91 (4)	312kg 121 (21)	-	-	-(B2)	-

SELLER REMARKS: Kleur Rooi, Poenskop, Skrotum 36 Bul kom uit 'n baie vrugbare ma



Calf and Mother				Fertility			
Birth Dir.	Birth Mat.	Wean Dir.	Wean Mat.	Scr. Circ.	Heifer Fert.	Cow Fert.	Longev.
85	82	101	111	103	111	100	99
75%	55%	72%	57%	38%	42%	20%	56%

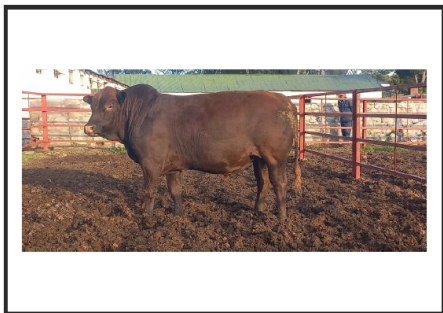
Post-Wean Growth			Frame			Carcass		
Post Wean	ADG	FCR	Mature Weight	Height	Length	EMA	Fat	Mar
98	101	-	110	110	102	102	92	99
64%	30%	-	51%	37%	33%	19%	22%	19%



LOT 23 (M)



AM 230078
ALPHA OMEGA AM 230078



Kuddeboek	SP
Geb. dtm	2023-10-15
Oud.	2j 7m
Inteling	7%

ALPHA OMEGA TULI STUD PTY LTD

Burgersdorp, Eastern Cape
0834487870
alfaomegastoet@gmail.com

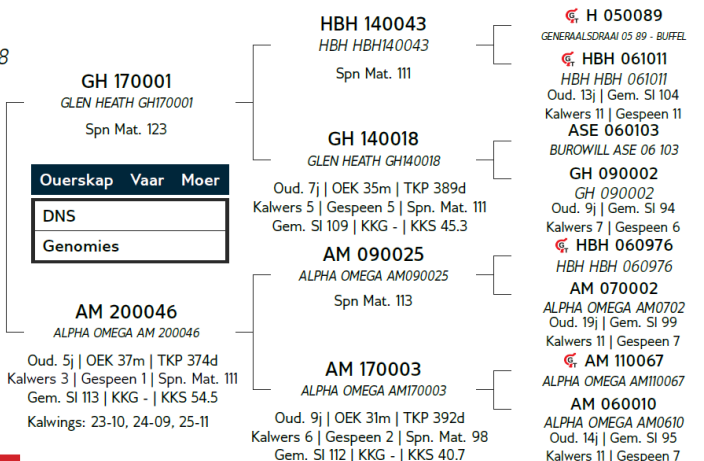
POSBUS 78, BURGERSDORP, 9744



Miostatien	
Q204X	Nie Getoets
NT821	Nie Getoets
F94L	Nie Getoets

KOEIWAARDE	114
87	Kalfgemak Waarde
114	Kalgroei Waarde
116	Melk Waarde
84	Onderhoudswaarde
104	Vrugbaarheidswaarde
GROEI WAARDE	106
KARKAS WAARDE	110
PRODUKSIE WAARDE	113

Geb. Gewig	205D Gewig	365D Gewig	540D Gewig	GDT Indeks	VOV Indeks	Skrotum	LH
35kg	249kg 113 (20)	-	291kg 117 (16)	-	-	- (B2)	-



Kalf en Moeder				Vrugbaarheid			
Geb. Dir.	Geb. Mat.	Spn. Dir.	Spn. Mat.	Skr. Omtr.	Vers Vrugb.	Koei Vrugb.	Lanklew.
89	93	114	116	108	100	104	102
74%	48%	70%	52%	40%	41%	22%	51%

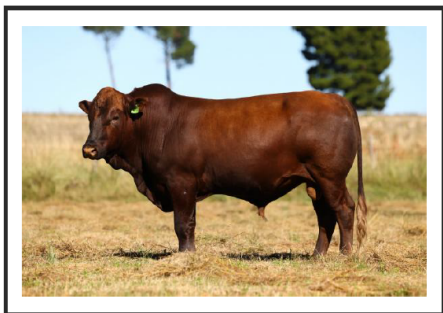
Na-Speen Groei			Raam			Karkas		
Na-Speen	GDT	VOV	Volw. Gewig	Hoogte	Lengte	OSO	Vet	Mar
106	110	104	116	104	106	107	126	95
64%	34%	6%	54%	39%	35%	32%	35%	32%

VERKOPER OPMERKINGS: Kleur Rooi, Poenskop, Skrotum 35

LOT 24 (M)



AM 220036
ALPHA OMEGA AM 220036



Kuddeboek	SP
Geb. dtm	2022-10-23
Oud.	3j 7m
Inteling	11%
DNS	U17374U144

ALPHA OMEGA TULI OOS

Dordrecht, Eastern Cape
0849411395
gertschmidt@nokwi.co.za

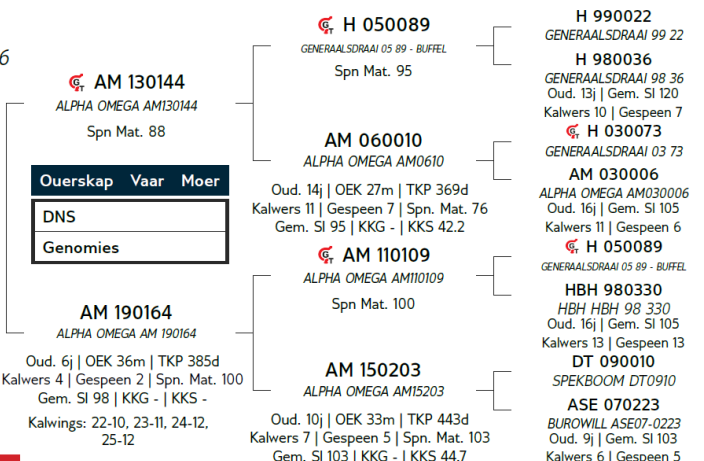
H/A HUMANSRUS BOERDERY BK, POSBUS
287, KLEINFONTEIN, DORDRECHT, 5435



Miostatien	
Q204X	Nie Getoets
NT821	Nie Getoets
F94L	Nie Getoets

KOEIWAARDE	99
92	Kalfgemak Waarde
100	Kalgroei Waarde
94	Melk Waarde
105	Onderhoudswaarde
104	Vrugbaarheidswaarde
GROEI WAARDE	92
KARKAS WAARDE	92
PRODUKSIE WAARDE	97

Geb. Gewig	205D Gewig	365D Gewig	540D Gewig	GDT Indeks	VOV Indeks	Skrotum	LH
32kg	187kg 100 (1)	178kg 82 (4)	219kg 90 (21)	-	-	- (B2)	-



Kalf en Moeder				Vrugbaarheid			
Geb. Dir.	Geb. Mat.	Spn. Dir.	Spn. Mat.	Skr. Omtr.	Vers Vrugb.	Koei Vrugb.	Lanklew.
92	98	100	94	65	93	107	98
74%	56%	60%	54%	47%	45%	28%	56%

Na-Speen Groei			Raam			Karkas		
Na-Speen	GDT	VOV	Volw. Gewig	Hoogte	Lengte	OSO	Vet	Mar
94	94	90	94	86	92	91	94	109
57%	43%	9%	51%	47%	44%	41%	43%	41%

VERKOPER OPMERKINGS: Kleur rooi, Poenskop, Skrotum 35

LOT 25 (M)



AM 23009
ALPHA OMEGA AM 23009



Herd Book	SP
Birth date	2023-02-17
Age	3y 3m
Inbreeding	4%

ALPHA OMEGA TULI STUD PTY LTD

Burgersdorp, Eastern Cape
0834487870
alfaenomegastoet@gmail.com

POSBUS 78, BURGERSDORP, 9744

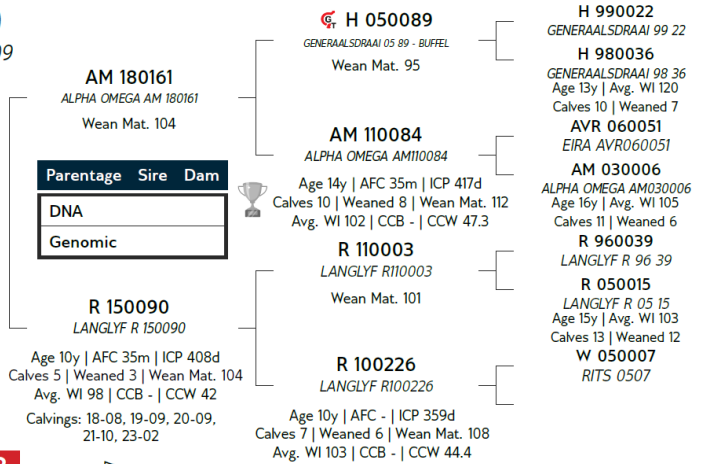


Myostatin	
Q204X	Not Tested
NT821	Not Tested
F94L	Not Tested

COW VALUE 103	
121	Calving Ease Value
99	Calf Growth Value
100	Milk Value
86	Maintenance Value
104	Fertility Value
GROWTH VALUE 100	
CARCASS VALUE 98	
PRODUCTION VALUE 102	

Birth Weight	205D Weight	365D Weight	540D Weight	ADG Index	FCR Index	Scrotum	LH
27kg	207kg 110 (6)	259kg 115 (3)	290kg 124 (6)	-	-	-(B2)	-

SELLER REMARKS: Kleur Dagha, Poenskop, Skrotum 39



Calf and Mother				Fertility				
Birth Dir.	Birth Mat.	Wean Dir.	Wean Mat.	Scr. Circ.	Heifer Fert.	Cow Fert.	Longev.	
124	84	99	100	88	103	103	95	
74%	47%	68%	50%	35%	36%	24%	52%	
Post-Wean Growth			Frame			Carcass		
Post Wean	ADG	FCR	Mature Weight	Height	Length	EMA	Fat	Mar
106	99	99	115	92	97	95	90	116
65%	32%	8%	48%	34%	33%	26%	27%	26%

LOT 26 (M)



AM 220131
ALPHA OMEGA AM 220131



Herd Book	SP
Birth date	2022-10-23
Age	3y 7m
Inbreeding	6%
DNA	U22252U021

ALPHA OMEGA TULI STUD PTY LTD

Burgersdorp, Eastern Cape
0834487870
alfaenomegastoet@gmail.com

POSBUS 78, BURGERSDORP, 9744

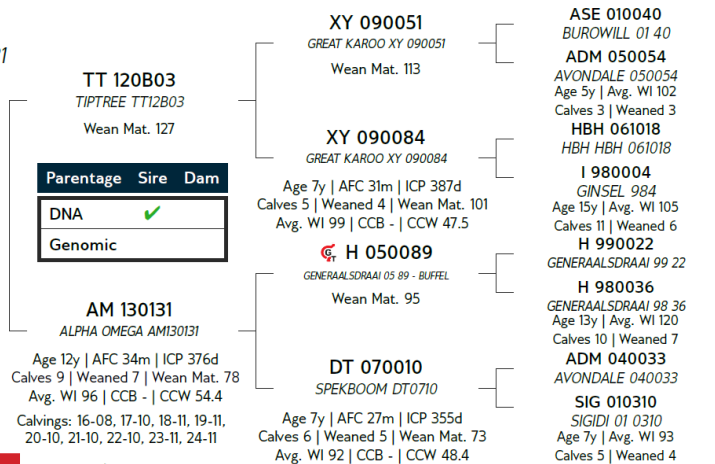


Myostatin	
Q204X	Not Tested
NT821	Not Tested
F94L	Not Tested

COW VALUE 86	
90	Calving Ease Value
104	Calf Growth Value
101	Milk Value
110	Maintenance Value
75	Fertility Value
GROWTH VALUE 89	
CARCASS VALUE 98	
PRODUCTION VALUE 84	

Birth Weight	205D Weight	365D Weight	540D Weight	ADG Index	FCR Index	Scrotum	LH
35kg	201kg 102 (29)	-	293kg 99 (25)	-	-	-(B2)	-

SELLER REMARKS: Kleur Geel, Poenskop, Skrotum 40



Calf and Mother				Fertility				
Birth Dir.	Birth Mat.	Wean Dir.	Wean Mat.	Scr. Circ.	Heifer Fert.	Cow Fert.	Longev.	
87	111	104	101	97	86	75	95	
75%	57%	72%	59%	49%	46%	27%	58%	
Post-Wean Growth			Frame			Carcass		
Post Wean	ADG	FCR	Mature Weight	Height	Length	EMA	Fat	Mar
93	92	85	89	84	88	111	113	111
64%	44%	21%	57%	48%	45%	43%	45%	43%

LOT 27 (M)



AM 220185
ALPHA OMEGA AM 220185



Kuddeboek	SP
Geb. dtm	2022-11-21
Oud.	3j 6m
Inteling	6%
DNS	U26782U006

ALPHA OMEGA TULI STUD PTY LTD

Burgersdorp, Eastern Cape
0834487870
alfaomegastoet@gmail.com

POSBUS 78, BURGERSDORP, 9744



Miostatien	
Q204X	Nie Getoets
NT821	Nie Getoets
F94L	Nie Getoets

KOEIWAARDE 88
98 Kalfgemak Waarde
87 Kalfgroei Waarde
92 Melk Waarde
116 Onderhoudswaarde
99 Vrugaarheidswaarde
GROEI WAARDE 75
KARKAS WAARDE 73
PRODUKSIE WAARDE 83

AM 130144 ALPHA OMEGA AM130144 Spn Mat. 88	H 050089 GENERAALSDRAAI 05 89 - BUFFEL Spn Mat. 95	H 990022 GENERAALSDRAAI 99 22
AM 060010 ALPHA OMEGA AM06010 Oud. 14j OEK 27m TKP 369d Kalwers 11 Gespeen 7 Spn. Mat. 76 Gem. SI 95 KKG - KKS 42.2	GH 160055 GLEN HEATH GH160055 Spn Mat. 109	H 980036 GENERAALSDRAAI 98 36 Oud. 13j Gem. SI 120 Kalwers 10 Gespeen 7
AM 190038 ALPHA OMEGA AM 190038 Oud. 6j OEK 39m TKP 403d Kalwers 3 Gespeen 2 Spn. Mat. 94 Gem. SI 99 KKG - KKS 42.2 Kalwings: 22-11, 23-12, 25-02	AM 160149 ALPHA OMEGA AM160149 Oud. 9j OEK 34m TKP 431d Kalwers 6 Gespeen 5 Spn. Mat. 82 Gem. SI 95 KKG - KKS 51.5	H 030073 GENERAALSDRAAI 03 73
		AM 030006 ALPHA OMEGA AM030006 Oud. 16j Gem. SI 105 Kalwers 11 Gespeen 6
		HBH 040858 HBH 04 0858
		ASE 090037 BUROWILL 2009-0037 Oud. 12j Gem. SI 106 Kalwers 10 Gespeen 8
		W 120038 RITS W1238
		AM 130135 ALPHA OMEGA AM130135 Oud. 7j Gem. SI 85 Kalwers 5 Gespeen 4

Kalf en Moeder				Vrugaarheid				
Geb. Dir.	Geb. Mat.	Spn. Dir.	Spn. Mat.	Skr. Omtr.	Vers Vrugg.	Koei Vrugg.	Lanklew.	
97	101	87	92	65	90	101	99	
74%	54%	71%	55%	46%	44%	27%	54%	
Na-Speen Groei			Raam			Karkas		
Na-Speen	GDT	VOV	Volw. Gewig	Hoogte	Lengte	OSO	Vet	Mar
79	72	79	84	67	69	72	92	101
64%	42%	9%	55%	45%	42%	40%	43%	40%
Geb. Gewig	205D Gewig	365D Gewig	540D Gewig	GDT Indeks	VOV Indeks	Skrotum	LH	
33kg	187kg 95 (29)	-	255kg 92 (25)	-	-	- (B2)	-	

VERKOPER OPMERKINGS: Kleur Geel, Scurs, Skrotum 38

LOT 28 (M)



AM 240038
ALPHA OMEGA AM 240038



Kuddeboek	SP
Geb. dtm	2024-04-04
Oud.	2j 2m
Inteling	8%
DNS	U24258U007

ALPHA OMEGA TULI OOS

Dordrecht, Eastern Cape
0849411395
gertschmidt@nokwi.co.za

H/A HUMANSRUS BOERDERY BK, POSBUS 287, KLEINFONTEIN, DORDRECHT, 5435



Miostatien	
Q204X	Nie Getoets
NT821	Nie Getoets
F94L	Nie Getoets

KOEIWAARDE 108
82 Kalfgemak Waarde
112 Kalfgroei Waarde
94 Melk Waarde
85 Onderhoudswaarde
113 Vrugaarheidswaarde
GROEI WAARDE 93
KARKAS WAARDE 101
PRODUKSIE WAARDE 105

R 180091 LANGLYF R 180091 Spn Mat. 95	R 130166 LANGLYF TANK JR Spn Mat. 94	R 080037 LANGLYF R0837
AM 150122 ALPHA OMEGA AM150122 Oud. 10j OEK 35m TKP 429d Kalwers 7 Gespeen 6 Spn. Mat. 91 Gem. SI 102 KKG - KKS 47.2 Kalwings: 18-10, 19-10, 20-10, 21-11, 22-12, 24-04, 25-10	R 140206 LANGLYF 14206 Oud. 9j OEK 34m TKP 366d Kalwers 7 Gespeen 7 Spn. Mat. 101 Gem. SI 102 KKG - KKS 38.6	RR 020083 RAU RR 02 83 Oud. 14j Gem. SI 115 Kalwers 12 Gespeen 11
	H 050089 GENERAALSDRAAI 05 89 - BUFFEL Spn Mat. 95	H 090001 GENERAALSDRAAI 09 0001
	AM 060010 ALPHA OMEGA AM06010 Oud. 14j OEK 27m TKP 369d Kalwers 11 Gespeen 7 Spn. Mat. 76 Gem. SI 95 KKG - KKS 42.2	R 080065 LANGLYF R0865 Oud. 6j Gem. SI 101 Kalwers 4 Gespeen 4
		H 990022 GENERAALSDRAAI 99 22
		H 980036 GENERAALSDRAAI 98 36 Oud. 13j Gem. SI 120 Kalwers 10 Gespeen 7
		H 030073 GENERAALSDRAAI 03 73
		AM 030006 ALPHA OMEGA AM030006 Oud. 16j Gem. SI 105 Kalwers 11 Gespeen 6

Kalf en Moeder				Vrugaarheid				
Geb. Dir.	Geb. Mat.	Spn. Dir.	Spn. Mat.	Skr. Omtr.	Vers Vrugg.	Koei Vrugg.	Lanklew.	
87	84	112	94	84	96	117	110	
74%	50%	58%	51%	35%	40%	27%	50%	
Na-Speen Groei			Raam			Karkas		
Na-Speen	GDT	VOV	Volw. Gewig	Hoogte	Lengte	OSO	Vet	Mar
112	96	88	117	91	102	99	88	106
52%	32%	9%	49%	35%	33%	28%	29%	28%
Geb. Gewig	205D Gewig	365D Gewig	540D Gewig	GDT Indeks	VOV Indeks	Skrotum	LH	
35kg	203kg 100 (1)	262kg 100 (3)	-	-	-	- (B1)	-	

VERKOPER OPMERKINGS: Kleur geel, Poenskop, Skrotum 33



ALPHA OMEGA EN ALPHA OMEGA OOS SHARE
Essex Farm, Burgersdorp 27 May 2026



Dier Info				Actual Values						Expected Breeding Values										Indices			Dam			
LOT	Animal ID	Sex	SEC	Birth Wt (kg)	205d Wt (kg)	CCB Ratio	CCW Ratio	Length Height Ratio	Scr. Circ. (mm)	Birth Dir (kg)	Birth Mat (kg)	Wean Dir (kg)	Wean Mat (kg)	Post Wean (kg)	Mature Weight. (kg)	ADG (g/d)	FCR (kg:kg)	Scr. Circ. (mm)	Height. (mm)	Length (mm)	Wean	ADG	Scr. Circ.	Avg. Wean Index	Nr. Calves	Repr. Index
Breed Average										0.99	0.03	6.9	1.6	11	18	88	-17	12.9	14.0	23.0						
Auction Average				33	209	-	49.6	-	-	1.62	0.19	8.9	0.4	12	26	83	-14	9.5	12	22	106	-	93	102	6.0	100
5	AM 230566	M	SP	33	181	-	-	-	-	1.54	0.34	5.2	-3.2	8.0	17.5	81	-14	8.2	12	19	114	-	90	97	3	96
6	AM 230239	M	SP	31	198	-	-	-	-	0.97	0.35	13.5	-0.4	20.3	31.7	116	-22	20.4	23	33	100	-	116	105	5	105
7	AM 230516	M	SP	34	250	-	45.6	-	-	2.21	0.01	13.5	0.3	16.1	39.8	72	-16	14.2	20	26	114	-	103	107	5	103
8	AM 240037	M	SP	30	206	-	-	-	-	0.75	0.52	9.8	-3.0	14.9	44.0	79	-6	6.1	9	23	100	-	85	98	6	97
9	AM 230524	M	SP	30	203	-	40.5	-	-	0.89	0.10	0.3	0.5	1.3	8.4	77	-17	9.7	8	15	92	-	93	98	9	108
10	AM 220042	M	SP	27	185	-	-	-	-	1.18	-0.28	10.7	-3.9	12.9	28.0	86	-17	6.1	11	22	124	-	85	98	4	103
11	AM 230072	M	SP	35	244	-	57.3	-	-	2.23	0.43	8.4	-2.2	8.3	27.5	54	-4	8.1	6	15	111	-	90	111	3	93
12	AM 220071	M	SP	32	153	-	-	-	-	1.22	-0.02	5.4	5.0	4.8	14.7	86	-15	15.3	14	22	95	-	105	107	10	107
13	AM 230512	M	SP	32	225	-	38.7	-	-	1.60	0.32	7.9	-0.1	6.9	33.7	69	0	13.6	16	22	102	-	101	96	7	112
14	AM 230271	M	SP	29	182	-	-	-	-	0.44	0.25	6.2	-2.7	9.6	26.9	66	-8	8.3	6	15	95	-	90	90	6	102
15	AM 230083	M	B	34	237	-	60.6	-	-	1.56	0.20	7.7	6.5	8.8	16.1	99	-23	14.1	19	25	107	-	103	107	1	-
16	AM 230288	M	SP	30	196	-	-	-	-	0.76	0.05	10.9	1.1	13.5	37.2	87	0	13.1	13	28	103	-	100	100	8	103
17	AM 230503	M	SP	32	228	-	59.1	-	-	1.08	0.64	6.2	4.5	13.0	20.4	82	-20	14.9	17	23	104	-	104	111	4	104
18	AM 220076	M	SP	36	157	-	-	-	-	2.57	-0.02	9.7	-2.6	14.8	14.6	84	-23	6.9	10	21	95	-	87	95	4	97
19	AM 230508	M	SP	36	225	-	44.2	-	-	2.53	0.05	7.5	-1.8	11.1	22.7	83	-15	1.6	10	18	100	-	76	100	3	101
20	AM 220054	M	SP	34	221	-	-	-	-	2.56	-0.19	19.8	-1.0	23.1	57.2	104	-20	9.7	19	32	147	-	93	102	8	116
21	AM 230531	M	SP	35	233	-	37.4	-	-	2.34	0.49	5.5	-2.8	6.1	20.4	63	-8	.6	7	13	105	-	74	97	10	108
22	AM 220037	M	SP	36	174	-	-	-	-	2.26	0.66	7.4	5.0	9.9	28.6	90	0	14.1	20	24	109	-	103	107	10	109
23	AM 230078	M	SP	35	249	-	54.5	-	-	1.93	0.26	12.6	6.3	14.8	36.0	107	-21	16.4	16	26	113	-	108	113	3	100
24	AM 220036	M	SP	32	187	-	-	-	-	1.62	0.10	6.9	-0.1	8.1	11.6	76	-9	-3.2	7	18	100	-	65	98	4	103
25	AM 230009	M	SP	27	207	-	44.9	-	-	-1.04	0.56	6.5	1.6	15.2	34.4	86	-16	7.3	10	21	110	-	88	98	5	78
26	AM 220131	M	SP	35	201	-	-	-	-	2.07	-0.35	8.4	2.0	8.0	6.4	72	-5	11.6	5	15	102	-	97	96	9	106
27	AM 220185	M	SP	33	187	-	-	-	-	1.22	0.00	1.7	-0.8	-0.8	1.6	33	1	-3.4	-4	3	95	-	65	99	3	93
28	AM 240038	M	SP	35	203	-	-	-	-	2.06	0.58	11.9	-0.2	18.2	37.0	81	-7	5.4	9	24	100	-	84	102	7	99
29	AM 230299	M	SP	35	217	-	-	-	-	2.22	0.16	9.5	0.8	14.1	31.1	90	-14	11.3	14	22	113	-	97	113	2	77



ALPHA OMEGA EN ALPHA OMEGA OOS SHARE
Essex Farm, Burgersdorp 27 May 2026



Dier Info				Werklike Syfers						Verwagte Teelwaardes								Indekse			Moeder							
LOT	Dier ID	Geslag	AFD	Geb. Gewig (kg)	205d Gewig (kg)	KKG Verh.	KKS Verh.	Lengte Hoogte Verh.	Skr. Omtr. (mm)	Geb Dir (kg)	Geb Mat (kg)	Spn Dir (kg)	Spn Mat (kg)	Na-Spn (kg)	Volw. Gewig (kg)	GDT (g/d)	VOV (kg:kg)	Skr. Omtr. (mm)	Hoogte (mm)	Lengte (mm)	Spn.	GDT	Skr. Omtr.	Gem. Spn. Indeks	Aant. Kalw.	Repr. Indeks		
Ras Gemiddeld									0.99	0.03	6.9	1.6	11	18	88	-17	12.9	14.0	23.0									
Aanbod Gemiddeld				33	209	-	49.6	-	-	1.62	0.19	8.9	0.4	12	26	83	-14	9.5	12	22	106	-	93	102	6.0	100		
30	AM 180042	M	SP	36	286	-	62.8	-	-	3.25	-0.29	19.5	2.2	24.0	36.2	126	-19	16.7	25	38	113	-	108	115	4	87		

EXPLANATION OF CATALOGUE ABBREVIATIONS

VERDUIDELIKING VAN KATALOGUS AFKORTINGS

Lot Number	LOT	LOT	Lot Nommer
Estimated breeding value	EBV	EBV	Beraamde teelwaarde
Parentage verification	Parentage	Ouerskap	Ouerskap verifikasie
Age in years	AGE	OUD.	Ouderdom in jaar
Age at First Calving	AFC	OEK	Ouderdom met Eerst Kalwing
Intercalving Period	ICP	TKP	Tussen-Kalf Periode
Number of calvings	Calvings	Kalwings	Aantal kalwings
Number of calves weaned	Weaned	Gespeen	Aantal kalwers gespeen
Average Wean index	Avg. WI	Gem. SI	Gemiddelde speen indeks
Animal identification number	ID	ID	Dier se identifikasie nommer
Herd Book Section	SEC	AFD	Kuddeboek Afdeling
Herd Book Section: Pending Registration	PEN	PEN	Kuddeboek Afdeling: Wag vir Registrasie
Herd Book Section: Not for Registration	NFR	NFR	Kuddeboek Afdeling: Nie vir Registrasie
Herd Book Section: Foundation Generation	FO	FO	Kuddeboek Afdeling: Fondasie Generasie
Herd Book Section: Appendix A	A	A	Kuddeboek Afdeling: Aanhangsel A
Herd Book Section: Appendix B	B	B	Kuddeboek Afdeling: Aanhangsel B
Herd Book Section: Studbook Proper, a registered animal	SP	SP	Kuddeboek Afdeling: Studbook Proper, 'n geregistreerde dier
Genomically Tested	GT	GT	Genomies Getoets
Homozygous Horned (Celtic test)	HH(c)	HH(c)	Homosigoties horings (Celtic toets)
Homozygous Polled (Celtic test)	PP(c)	PP(c)	Homosigoties Poena (Celtic toets)
Heterozygous Polled (Celtic test)	Pp(c)	Pp(c)	Heterosigoties Poena (Celtic toets)
Phenotypically Polled	P	P	Fenotopies Poena
Birth Direct breeding value	Birth Dir.	Geb. Dir	Geboorte Direk teelwaarde
Wean Direct breeding value	Wean Dir.	Spn. Dir.	Speen Direk teelwaarde
Wean Maternal breeding value	Wean Mat.	SPn. Mat.	Speen Maternaal teelwaarde
Scrotal Circumference	Scr. Circ.	Skr. Omt.	Skrotum omtrek
Heifer Fertility	Heifer Fert.	Vers Vrugb.	Vers Vrugbaarheid
Cow Fertility	Cow Fert.	Koei Vrugb.	Koei Vrugbaarheid
Longevity	Longev.	Lankl.	Lanklewendheid
Mature Weight	Mat. Wt.	Volw. Gewig	Volwasse gewig
Average Daily Gain (g/day)	ADG	GDT	Gemiddelde Daaglikse Toename
Feed Conversion Ratio (kg:kg)	FCR	VOV	Voeromset Verhouding
Eye Muscle Area	EMA	OSO	Oogspier grootte
Backfat Thickness	Fat	Vet	Rugvet Diepte
Marbeling (intra-muscular fat)	Mar	Mar	Marmering (binne-spierse vet)
Actual Birth weight	Birth Wt.	Geb. gewig	Werklike Geboorte gewig
205-day Dam-age corrected weight	205d Wt.	205d gewig	205-dag Moeder-ouderdom gekorrigeerde gewig
365-day weight index	365D Index	365D Indeks	365-dae gewig indeks
540-day weight index	540D Index	540D Indeks	540-dae gewig indeks
Length-Height ratio	LH	LH	Lengte-Hoogte Verhouding
Cow-Calf Birth Ratio	CCG	KKG	Koei-Kalf Geboorte Verhouding
Cow-Calf Wean Ratio	CCW	KKS	Koei-Kalf Speen Verhouding
Average Weaning Index	Avg. WI	Gem. SI	Gemiddelde speen indeks
Number of Calves	Nr. Calves	Aant. Kalw.	Aantal kalwers
Reproduction Index	Repr. Index	Repr. Indeks	Reproduksie indeks
Animal sex: M - Male, F - Female	M / F	M / V	Dier geslag: M - Manlik, V - Vroulik

TULI VERSE

LOT31-51



**ALPHA
& OMEGA**

TULI



SA STAMBOEK
STUD BOOK

Driegerasiestamboom

saamgestel deur die S.A. Stamboek- en Diereverbeteringsvereniging

TULI



LOT 31

0696894000
ALPHA OMEGA TULI STUD PTY LTD
POSBUS 78
BURGERSDORP
9744

Naam ALPHA OMEGA AM 230027

Ident. nommer: AM 230027
Reg. nommer: 0096345293
Geboorte Datum: 29/04/23
Geslag: Vroulik
DNA Nr:
INTELING: 5%
Afdeling: SP
Onderafdeling:
Koei/Kalf verh. Gebрте (GGV): -
HORING STATUS:

Vaar: ALPHA OMEGA AM 180161 - 29/10/18
AM 180161 0090457243
HORING STATUS: P
Afdeling SP DNA Nr U13305U003



Moer: LANGLYF 1489 - 22/09/14
R 140089 0080991888
HORING STATUS:
Gem TKP: 425 (7) OEK: 36 (GGV: -)
Kalwings: 09/17 11/18 11/19 10/20 12/21 04/23 09/24
Afdeling SP DNA Nr

P.G. Vaar: GENERAALSDRAAI 05 89 - BUFFEL - 11/11/05
H 050089 0062490305
HORING STATUS: P
Afdeling SP DNA Nr AS003270

P.G. Moer: ALPHA OMEGA AM110084 - 19/10/11
AM 110084 0075655530
HORING STATUS: P
Gem TKP: 417 (10) OEK: 35 (GGV: -)
Afdeling SP DNA Nr
Toekennings:
Elite-Silwer (2023)

M.G. Vaar: RITS 0518 - 31/08/05
W 050018 0061914313
HORING STATUS: PP
Afdeling SP DNA Nr U166777

M.G. Moer: LANGLYF R 05 15 - 17/06/05
R 050015 0061216305
HORING STATUS:
Gem TKP: 368 (13) OEK: 38 (GGV: -)
Afdeling SP DNA Nr

05/2026	KALF GEMAK ★★★★		MELK ★★★	KALFGROEI ★★★★	ONDERHOUD ★★★★		GROEI TOETS					VRUGBAARHEID ★★★			KOEI WAARDE ★★★	GROEI WAARDE ★★★	PRODUKSIE WAARDE -
	109 ⁶⁹	97 ⁵²	93 ⁶⁷	103 ⁴⁹	GDT	Kleiber	VOV	Lengte	Hoogte	SO	OEK	TKP	98 ³³	94 ⁵⁰			
Seleksie Waarde	Geb gew	Geb Mat	Melk	Speen gew	Naspeen	Volw. gewig	GDT	Kleiber	VOV	Lengte	Hoogte	SO	OEK	TKP	In Vitro		
TW Indeks	113	84	97	93	95	95	82	92	84	85	78	83	92	100	94 ⁵⁰	84 ²²	90 ⁴⁴
Teelwaarde	-0.09 ⁷⁴	0.56 ⁵⁰	0.8 ⁵²	3.8 ⁶⁷	8 ⁵⁹	13.3 ⁴⁹	53.4 ³⁴	-8.7 ³⁴	-4.1 ⁸	13 ³⁵	2.2 ³⁷	4.8 ³⁸	-1.1 ⁴⁰	-2.6 ²⁶			
Metings	28			165 ⁽¹¹¹⁾	232 ⁽¹⁰⁰⁾	286 ⁽¹⁴⁹⁾	-	-	-								



SA STAMBOEK
STUD BOOK

Driegerasiestamboom

saamgestel deur die S.A. Stamboek- en Diereverbeteringsvereniging

TULI



LOT 32

0723984000
ALPHA OMEGA TULI OOS
H/A HUMANSRUS BOERDERY BK
POSBUS 287, KLEINFONTEIN
DORDRECHT
5435

Naam ALPHA OMEGA AM 230281

Ident. nommer: AM 230281
Reg. nommer: 0096367404
Geboorte Datum: 16/11/23
Geslag: Vroulik
DNA Nr: U22124U044
INTELING: 5%
Afdeling: SP
Onderafdeling:
Koei/Kalf verh. Gebрте (GGV): -
HORING STATUS: P

Vaar: ALPHA OMEGA AM 190158 - 30/10/19
AM 190158 0090420860
HORING STATUS P
Afdeling SP DNA Nr U13340U021



Moer: ALPHA OMEGA AM 170056 - 08/09/17
AM 170056 0086704780
HORING STATUS P
Gem TKP: 378 (6) OEK: 37 (GGV: -)
Kalwings: 10/20 10/21 11/22 11/23 11/24 12/25
Afdeling SP DNA Nr

P.G. Vaar: ALPHA OMEGA AM 150071 - 09/10/15
AM 150071 0084002575
HORING STATUS P
Afdeling SP DNA Nr U13340U022

P.G. Moer: ALPHA OMEGA AM160078 - 05/09/16
AM 160078 0085278315
HORING STATUS P
Gem TKP: 377 (3) OEK: 25 (GGV: -)
Afdeling SP DNA Nr

M.G. Vaar: RITS W1238 - 21/10/12
W 120038 0075911891
HORING STATUS P
Afdeling SP DNA Nr LSTB529682

M.G. Moer: ALPHA OMEGA AM100142 - 21/12/10
AM 100142 0072461890
HORING STATUS P
Gem TKP: 408 (11) OEK: 33 (GGV: -)
Afdeling SP DNA Nr

05/2026		KALF GEMAK ★★★		MELK ★★★★	KALFGROEI ★★★★	ONDERHOUD ★★★	GROEI TOETS					VRUGBAARHEID ★★★★			KOEI WAARDE	GROEI WAARDE	PRODUKSIE WAARDE	
Seleksie Waarde		97 68		101 47	116 69	89 37							112 26			★★★★	-	-
		Geb gew	Geb Mat	Melk	Speen gew	Naspeen	Volw. gewig	GDT	Kleiber	VOV	Lengte	Hoogte	SO	OEK	TKP			
TW Indeks		99	95	101	116	111	111	103	88	94	111	106	105	108	111	119 47	-	-
Teelwaarde		1.12 74	0.18 46	2.1 47	13.2 69	16.3 60	30.4 37	94.2 23	-12.3 23	-11.9 5	29.5 25	17.5 27	15 28	-9.5 33	-4.6 19	In Vitro		
Metings		30			192 (108)	214 (102)	- (-)	-	-	-								



SA STAMBOEK
STUD BOOK

Driegerasiestamboom

saamgestel deur die S.A. Stamboek- en Diereverbeteringsvereniging

TULI



LOT 33

0696894000
ALPHA OMEGA TULI STUD PTY LTD
POSBUS 78
BURGERSDORP
9744

Naam ALPHA OMEGA AM 240005

Ident. nommer: AM 240005
Reg. nommer: 0097571673
Geboorte Datum: 08/01/24
Geslag: Vroulik
DNA Nr:
INTELING: 5%
Afdeling: SP
Onderafdeling:
Koei/Kalf verh. Gebрте (GGV): -
HORING STATUS:

Vaar: ALPHA OMEGA AM 190093 - 01/10/19
AM 190093 0090396292
SC
Afdeling SP DNA Nr U13340U010

Moer: ALPHA OMEGA AM 190151 - 26/10/19
AM 190151 0090420803
P
Afdeling SP DNA Nr

P.G. Vaar: CASMAN CHKK100138 - 03/12/10
CHK 100138 0072214653
P
Afdeling SP DNA Nr U192280

P.G. Moer: BUROWILL 2009-0045 - 17/12/09
ASE 090045 0069934388
P
Gem TKP: 413 (9) OEK: 33 (GGV: 5.64)
Afdeling SP DNA Nr

M.G. Vaar: BLOMVLEI 10 0022 - 09/06/10
SW 100022 0071011803
H
Afdeling SP DNA Nr ASC004832

M.G. Moer: EIRA AVR996 - 08/12/09
AVR 090096 0069865160
P
Gem TKP: 358 (10) OEK: 35 (GGV: 9.3)
Afdeling SP DNA Nr



05/2026	KALF GEMAK ★★★		MELK ★★★	KALFGROEI ★★★★	ONDERHOUD ★★★	GROEI TOETS					VRUGBAARHEID ★★★★			KOEI WAARDE ★★★★	GROEI WAARDE	PRODUKSIE WAARDE
	81 ⁶⁶		92 ⁴⁸	116 ⁶⁷	86 ⁴¹	GDT	Kleiber	VOV	Lengte	Hoogte	SO	OEK	TKP			
Seleksie Waarde	Geb gew	Geb Mat	Melk	Speen gew	Naspeen	Volw. gewig										
TW Indeks	81	103	92	116	113	116	110	111	-	111	117	114	100	109	107 ⁴⁷	-
Teelwaarde	2.6 ⁷²	-0.9 ⁴⁴	-0.8 ⁴⁸	13.3 ⁶⁷	17.4 ⁵⁵	35.8 ⁴¹	107.9 ²⁷	9.3 ²⁷	-	29.4 ²⁸	23.9 ³¹	19.3 ³²	-5.5 ³⁶	-4.2 ²⁰	In Vitro	
Metings	32			247 ⁽⁸⁹⁾	- ⁽⁻⁾	313 ⁽¹⁰⁶⁾	-	-	-							



SA STAMBOEK
STUD BOOK

Driegerasiestamboom

saamgestel deur die S.A. Stamboek- en Diereverbeteringsvereniging

TULI



LOT 34

0723984000
ALPHA OMEGA TULI OOS
H/A HUMANSRUS BOERDERY BK
POSBUS 287, KLEINFONTEIN
DORDRECHT
5435

Naam ALPHA OMEGA AM 230134

Ident. nommer: AM 230134
Reg. nommer: 0095631008
Geboorte Datum: 02/05/23
Geslag: Vroulik
DNA Nr: U17374U084
INTELING: 6%
Afdeling: SP
Onderafdeling:
Koei/Kalf verh. Gebрте (GGV): -
HORING STATUS: P

Vaar: ALPHA OMEGA AM090025 - 10/09/09
AM 090025 0069754620
SC

HORING
STATUS

Afdeling SP DNA Nr U150320



Moer: ALPHA OMEGA AM 170108 - 10/10/17
AM 170108 0086705258

HORING
STATUS

Gem TKP: 466 (5) **OEK:** 37 (GGV: -)
Kalwings: 10/20 11/21 05/23 11/24 12/25

Afdeling SP DNA Nr

P.G. Vaar: HBH HBH 060976 - 27/09/06
HBH 060976 0063656318

HORING
STATUS

PP

Afdeling SP DNA Nr AS003311

P.G. Moer: ALPHA OMEGA AM0702 - 19/01/07
AM 070002 0064333727
PP

HORING
STATUS

Gem TKP: 414 (11) **OEK:** 32 (GGV: -)
Afdeling SP DNA Nr

M.G. Vaar: HBH HBH140025 - 30/09/14
HBH 140025 0080234719

HORING
STATUS

P

Afdeling SP DNA Nr LSTB529651

M.G. Moer: ALPHA OMEGA AM140072 - 16/12/14
AM 140072 0081389173

HORING
STATUS

SC

Gem TKP: 392 (2) **OEK:** 34 (GGV: -)
Afdeling SP DNA Nr

05/2026	KALF GEMAK ★★★		MELK ★★★★	KALFGROEI ★★★★	ONDERHOUD ★★★★	GROEI TOETS					VRUGBAARHEID ★★★			KOEI WAARDE ★★★★	GROEI WAARDE ★★★★	PRODUKSIE WAARDE	
	84 ⁷⁰		103 ⁵⁴	106 ⁷⁰	104 ⁴⁷	GDT	Kleiber	VOV	Lengte	Hoogte	SO	OEK	TKP				
Seleksie Waarde											98 ³³						
TW Indeks	Geb gew	Geb Mat	Melk	Speen gew	Naspeen	Volw. gewig	97	98	91	91	82	105	97	98	102 ⁵¹	102 ²⁶	101 ⁴⁶
Teelwaarde	2.27 ⁷⁴	0.06 ⁵⁵	2.4 ⁵⁴	9.4 ⁷⁰	8.6 ⁶⁴	11.6 ⁴⁷	83 ⁴⁰	-2.5 ⁴⁰	-10 ⁸	16.8 ⁴²	4.2 ⁴⁶	15.4 ⁴⁸	-3.7 ⁴²	-2.3 ²⁴	In Vitro		
Metings	39			170 ⁽⁹²⁾	195 ⁽⁹⁰⁾	389 ⁽¹⁰⁰⁾	-	-	-								



SA STAMBOEK
STUD BOOK

Driegerasiestamboom

saamgestel deur die S.A. Stamboek- en Diereverbeteringsvereniging

TULI



LOT 35

0696894000
ALPHA OMEGA TULI STUD PTY LTD
POSBUS 78
BURGERSDORP
9744

Naam ALPHA OMEGA AM 230539

Ident. nommer: AM 230539
Reg. nommer: 0096370689
Geboorte Datum: 01/12/23
Geslag: Vroulik
DNA Nr:
INTELING: 6%
Afdeling: SP
Onderafdeling:
Koei/Kalf verh. Gebрте (GGV): -
HORING STATUS:

Vaar: ALPHA OMEGA AM 190093 - 01/10/19
AM 190093 0090396292
SC
Afdeling SP DNA Nr U13340U010

Moer: ALPHA OMEGA AM120133 - 14/10/12
AM 120133 0077181600
P
Afdeling SP
Gem TKP: 374 (9) OEK: 35 (GGV: -)
Kalwings: 09/15 11/16 10/17 10/18 10/19 09/20 09/21
01/23 12/23
Afdeling SP DNA Nr

P.G. Vaar: CASMAN CHKK100138 - 03/12/10
CHK 100138 0072214653
P
Afdeling SP DNA Nr U192280

P.G. Moer: BUROWILL 2009-0045 - 17/12/09
ASE 090045 0069934388
P
Gem TKP: 413 (9) OEK: 33 (GGV: 5.64)
Afdeling SP DNA Nr

M.G. Vaar: PAVO 04 0022 - 30/08/04
T 040022 0048901326
H
Afdeling SP DNA Nr U78884

M.G. Moer: ALPHA OMEGA AM070030 - 09/10/07
AM 070030 0065581407
P
Gem TKP: 424 (9) OEK: 34 (GGV: -)
Afdeling SP DNA Nr



05/2026	KALF GEMAK ★★★★		MELK ★★★	KALFGROEI ★★★★	ONDERHOUD ★★★		GROEI TOETS					VRUGBAARHEID ★★★★			KOEI WAARDE ★★★★	GROEI WAARDE	PRODUKSIE WAARDE
	101 ⁶⁸	86 ⁵³	109 ⁶⁷	98 ⁴⁸							105 ³⁰						
Seleksie Waarde	Geb gew	Geb Mat	Melk	Speen gew	Naspeen	Volw. gewig	GDT	Kleiber	VOV	Lengte	Hoogte	SO	OEK	TKP			
TW Indeks	101	100	86	109	110	102	110	114	-	105	112	112	92	108	104 ⁴⁹	-	-
Teelwaarde	0.91 ⁷³	0.01 ⁴⁹	-2.4 ⁵³	10.5 ⁶⁷	15.7 ⁵⁶	20.7 ⁴⁸	107.7 ²⁸	11.8 ²⁸	-	25.8 ²⁹	20.8 ³²	18.5 ³³	-1.2 ³⁷	-4.1 ²⁴	In Vitro		
Metings	29			162 ⁽¹⁰⁰⁾	- ⁽⁻⁾	299 ⁽¹¹³⁾	-	-	-								



LOT 36

0723984000
ALPHA OMEGA TULI OOS
H/A HUMANSRUS BOERDERY BK
POSBUS 287, KLEINFONTEIN
DORDRECHT
5435

Naam ALPHA OMEGA AM 230284

Ident. nommer: AM 230284
Reg. nommer: 0096367420
Geboorte Datum: 20/11/23
Geslag: Vroulik
DNA Nr: U22124U097
INTELING: 6%
Afdeling: SP
Onderafdeling:
Koei/Kalf verh. Gebрте (GGV): -
HORING STATUS: P

Vaar: ALPHA OMEGA AM 180096 - 08/10/18
AM 180096 0088617535
HORING STATUS: SC
Afdeling SP **DNA Nr U13305U002**



Moer: ALPHA OMEGA AM 200156 - 18/10/20
AM 200156 0091920827
HORING STATUS:
Gem TKP: 700 (2) **OEK:** 37 (GGV: -)
Kalwings: 11/23 10/25
Afdeling SP **DNA Nr**

P.G. Vaar: ALPHA OMEGA AM150059 - 20/09/15
AM 150059 0083224048
HORING STATUS: P
Afdeling SP **DNA Nr LSTB529697**

P.G. Moer: ALPHA OMEGA AM160078 - 05/09/16
AM 160078 0085278315
HORING STATUS: P
Gem TKP: 377 (3) **OEK:** 25 (GGV: -)
Afdeling SP **DNA Nr**

M.G. Vaar: GREAT KAROO XY 120065 - 09/10/12
XY 120065 0076704790
HORING STATUS: P
Afdeling SP **DNA Nr U275473**

M.G. Moer: RITS W 130043 - 27/10/13
W 130043 0078428265
HORING STATUS: P
Gem TKP: 377 (6) **OEK:** 34 (GGV: -)
Afdeling SP **DNA Nr**
Toekennings:
Elite-Silwer (2024)

05/2026	KALF GEMAK ★★★★		MELK ★★★	KALFGROEI ★★★★	ONDERHOUD ★★★	GROEI TOETS					VRUGBAARHEID ★★★			KOEI WAARDE ★★★	GROEI WAARDE	PRODUKSIE WAARDE
	108 ⁶⁶	91 ⁴²	111 ⁶⁸	90 ³⁷	GDT	Kleiber	VOV	Lengte	Hoogte	SO	OEK	TKP				
Seleksie Waarde	Geb gew	Geb Mat	Melk	Speen gew	Naspeen	Volw. gewig										
TW Indeks	110	94	91	111	118	110	113	107	96	109	103	106	98	91	99 ⁴⁵	-
Teelwaarde	0.19 ⁷²	0.24 ⁴⁰	-1.1 ⁴²	11.2 ⁶⁸	20 ⁵⁸	29.5 ³⁷	112.7 ²⁷	5.4 ²⁷	-13.6 ⁵	28.8 ²⁸	16.3 ³¹	15.5 ³¹	-4 ³²	-1 ¹⁸	In Vitro	
Metings	25			168 ⁽⁹⁶⁾	208 ⁽¹⁰¹⁾	289 ⁽¹⁰⁰⁾	-	-	-							



SA STAMBOEK
STUD BOOK

Driegerasiestamboom

saamgestel deur die S.A. Stamboek- en Diereverbeteringsvereniging

TULI



LOT 37

0696894000
ALPHA OMEGA TULI STUD PTY LTD
POSBUS 78
BURGERSDORP
9744

Naam ALPHA OMEGA AM 230091

Ident. nommer: AM 230091
Reg. nommer: 0096355060
Geboorte Datum: 25/10/23
Geslag: Vroulik
DNA Nr:
INTELING: 18%
Afdeling: SP
Onderafdeling:
Koei/Kalf verh. Gebрте (GGV): -
HORING STATUS:

Vaar: ALPHA OMEGA AM130144 - 22/10/13
AM 130144 0079775532
HORING STATUS: P
Afdeling SP DNA Nr AS010555



Moer: ALPHA OMEGA AM 200199 - 31/10/20
AM 200199 0091924118
HORING STATUS:
Gem TKP: - (1) OEK: 36 (GGV: -)
Kalwings: 10/23
Afdeling SP DNA Nr

P.G. Vaar: GENERAALSDRAAI 05 89 - BUFFEL - 11/11/05
H 050089 0062490305
HORING STATUS: PP
Afdeling SP DNA Nr AS003270

P.G. Moer: ALPHA OMEGA AM0610 - 19/09/06
AM 060010 0063872147
HORING STATUS: PP
Gem TKP: 369 (11) OEK: 27 (GGV: -)
Afdeling SP DNA Nr

M.G. Vaar: GENERAALSDRAAI 05 89 - BUFFEL - 11/11/05
H 050089 0062490305
HORING STATUS: P
Afdeling SP DNA Nr AS003270

M.G. Moer: ALPHA OMEGA AM160231 - 24/12/16
AM 160231 0085227395
HORING STATUS: P
Gem TKP: 459 (4) OEK: 32 (GGV: -)
Afdeling SP DNA Nr

05/2026	KALF GEMAK ★★★		MELK ★★★	KALFGROEI ★★★★	ONDERHOUD ★★★		GROEI TOETS					VRUGBAARHEID ★★★			KOEI WAARDE ★★★★	GROEI WAARDE ★★★	PRODUKSIE WAARDE -
	94 ⁷⁰		90 ⁵⁵	115 ⁷⁰	90 ⁵⁶							99 ³⁹					
Seleksie Waarde	Geb gew	Geb Mat	Melk	Speen gew	Naspeen	Volw. gewig	GDT	Kleiber	VOV	Lengte	Hoogte	SO	OEK	TKP			
TW Indeks	92	107	90	115	105	111	92	91	84	95	76	70	90	102	103 ⁵⁴	87 ³⁰	99 ⁴⁹
Teelwaarde	1.68 ⁷⁴	-0.21 ⁵⁴	-1.2 ⁵⁵	13 ⁷⁰	13.5 ⁶⁵	30.7 ⁵⁶	72.7 ⁴⁷	-8.9 ⁴⁷	-3.9 ¹²	19.8 ⁴⁷	0.9 ⁴⁹	-1 ⁵⁰	0.1 ⁴⁷	-2.9 ³¹	In Vitro		
Metings	31			307 ⁽¹¹³⁾	- ⁽⁻⁾	354 ⁽¹⁰⁵⁾	-	-	-								



SA STAMBOEK
STUD BOOK

Driegerasiestamboom

saamgestel deur die S.A. Stamboek- en Diereverbeteringsvereniging

TULI



LOT 38

0723984000
ALPHA OMEGA TULI OOS
H/A HUMANSRUS BOERDERY BK
POSBUS 287, KLEINFONTEIN
DORDRECHT
5435

Naam ALPHA OMEGA AM 240030

Ident. nommer: AM 240030
Reg. nommer: 0096929831
Geboorte Datum: 24/01/24
Geslag: Vroulik
DNA Nr: U22124U026
INTELING: 7%
Afdeling: SP
Onderafdeling:
Koei/Kalf verh. Gebрте (GGV): -
HORING STATUS: H

Vaar: LANGLYF R 180091 - 28/08/18
R 180091 0087989026
P
Afdeling SP DNA Nr U13305U004



Moer: ALPHA OMEGA AM 200202 - 02/11/20
AM 200202 0091924134
P
Afdeling SP DNA Nr
Gem TKP: 414 (2) OEK: 39 (GGV: -)
Kalwings: 01/24 03/25

P.G. Vaar: LANGLYF TANK JR - 07/10/13
R 130166 0078765161
HORING STATUS
Afdeling SP DNA Nr P375/16

P.G. Moer: LANGLYF 14206 - 23/10/14
R 140206 0081026270
HORING STATUS
Gem TKP: 366 (7) OEK: 34 (GGV: -)
Afdeling SP DNA Nr

M.G. Vaar: VEN PM120022 - 18/01/12
PM 120022 0074976267
HORING STATUS
Afdeling SP DNA Nr U281482

M.G. Moer: ALPHA OMEGA AM150082 - 18/10/15
AM 150082 0083223917
HORING STATUS
Gem TKP: 390 (3) OEK: 35 (GGV: -)
Afdeling SP DNA Nr

05/2026	KALF GEMAK ★★★		MELK ★★★★	KALFGROEI ★★★★	ONDERHOUD ★★★		GROEI TOETS					VRUGBAARHEID ★★★★			KOEI WAARDE ★★★★	GROEI WAARDE	PRODUKSIE WAARDE
	94 67	102 43	106 56	87 41							111 28						
Seleksie Waarde	Geb gew	Geb Mat	Melk	Speen gew	Naspeen	Volw. gewig	GDT	Kleiber	VOV	Lengte	Hoogte	SO	OEK	TKP			
TW Indeks	98	88	102	106	105	114	100	103	-	105	104	101	101	112	108 43	- -	- -
Teelwaarde	1.2 73	0.43 42	2.3 43	9.1 56	13.3 52	32.9 41	88.2 24	1.4 24	- -	25.8 25	16.6 27	13.4 28	-5.6 36	-4.8 19	In Vitro		
Metings	30			209 (100)	- (-)	278 (103)	-	-	-								



SA STAMBOEK
STUD BOOK

Driegerasiestamboom

saamgestel deur die S.A. Stamboek- en Diereverbeteringsvereniging

TULI



LOT 39

0696894000
ALPHA OMEGA TULI STUD PTY LTD
POSBUS 78
BURGERSDORP
9744

Naam ALPHA OMEGA AM 240015

Ident. nommer: AM 240015
Reg. nommer: 0098676174
Geboorte Datum: 20/05/24
Geslag: Vroulik
DNA Nr:
INTELING: 4%
Afdeling: A
Onderafdeling:
Koei/Kalf verh. Gebрте (GGV): -
HORING STATUS:

Vaar: ALPHA OMEGA AM 190093 - 01/10/19
AM 190093 0090396292
SC
Afdeling SP DNA Nr U13340U010



Moer: BUSHMANS CHR18-002 - 18/03/18
CHR 180002 0087300257
Afdeling BS DNA Nr

P.G. Vaar: CASMAN CHKK100138 - 03/12/10
CHK 100138 0072214653
P
Afdeling SP DNA Nr U192280

P.G. Moer: BUOWILL 2009-0045 - 17/12/09
ASE 090045 0069934388
P
Gem TKP: 413 (9) OEK: 33 (GGV: 5.64)
Afdeling SP DNA Nr

M.G. Vaar: MULTIPLE SIRES - 01/01/40
0135431206
Afdeling MS DNA Nr

M.G. Moer: RITS W 150045 - 23/11/15
W 150045 0083218701
Afdeling A DNA Nr

05/2026	KALF GEMAK ★★★		MELK ★★★	KALFGROEI ★★★★	ONDERHOUD ★★★		GROEI TOETS					VRUGBAARHEID ★★★			KOEI WAARDE ★★★	GROEI WAARDE	PRODUKSIE WAARDE
	93 ⁶³		91 ³⁹	107 ⁵⁹	88 ³⁴							92 ²²					
Seleksie Waarde	Geb gew	Geb Mat	Melk	Speen gew	Naspeen	Volw. gewig	GDT	Kleiber	VOV	Lengte	Hoogte	SO	OEK	TKP			
TW Indeks	93	103	91	107	111	114	101	98	-	103	110	107	92	92	92 ⁴⁰	-	
Teelwaarde	1.6 ⁶⁹	-0.7 ⁴⁰	-0.9 ³⁹	9.8 ⁵⁹	16.5 ⁴⁷	33.2 ³⁴	89.5 ²¹	-2.6 ²¹	-	25 ²¹	20 ²⁴	16.3 ²⁵	-1.3 ²⁶	-1.3 ¹⁷	In Vitro		
Metings	32			226 ⁽⁹⁷⁾	- ⁽⁻⁾	258 ⁽⁹³⁾	-	-	-								



SA STAMBOEK
STUD BOOK

Driegerasiestamboom

saamgestel deur die S.A. Stamboek- en Diereverbeteringsvereniging

TULI



LOT 40

0723984000
ALPHA OMEGA TULI OOS
H/A HUMANSRUS BOERDERY BK
POSBUS 287, KLEINFONTEIN
DORDRECHT
5435

Naam ALPHA OMEGA AM 230296

Ident. nommer: AM 230296
Reg. nommer: 0096367503
Geboorte Datum: 25/11/23
Geslag: Vroulik
DNA Nr: U22124U100
INTELING: 0%
Afdeling: A
Onderafdeling:
Koei/Kalf verh. Gebрте (GGV): -
HORING STATUS: P

Vaar: ALPHA OMEGA AM 190158 - 30/10/19
AM 190158 0090420860
HORING STATUS P
Afdeling SP DNA Nr U13340U021



Moer: AM 180364 - 01/07/18
AM 180364 0091808634
HORING STATUS
Gem TKP: 558 (3) OEK: * (GGV: -)
Kalwings: 11/21 11/23 12/24
Afdeling BS DNA Nr

P.G. Vaar: ALPHA OMEGA AM 150071 - 09/10/15
AM 150071 0084002575
HORING STATUS P
Afdeling SP DNA Nr U13340U022

P.G. Moer: ALPHA OMEGA AM160078 - 05/09/16
AM 160078 0085278315
HORING STATUS P
Gem TKP: 377 (3) OEK: 25 (GGV: -)
Afdeling SP DNA Nr

M.G. Vaar: -
HORING STATUS
Afdeling - DNA Nr

M.G. Moer: -
HORING STATUS
Gem TKP: - OEK: - (GGV: -)
Afdeling - DNA Nr

05/2026		KALF GEMAK ★★★		MELK ★★★★	KALFGROEI ★★★★	ONDERHOUD ★★★	GROEI TOETS					VRUGBAARHEID ★★★★			KOEI WAARDE	GROEI WAARDE	PRODUKSIE WAARDE	
Seleksie Waarde		94 ⁶²		109 ⁴⁰	104 ⁶¹	89 ²⁵		107 ¹⁶								★★★★		
		Geb gew	Geb Mat	Melk	Speen gew	Naspeen	Volw. gewig	GDT	Kleiber	VOV	Lengte	Hoogte	SO	OEK	TKP			
TW Indeks		97	89	109	104	111	111	112	99	-	117	121	104	119	102	108 ³⁸	-	-
Teelwaarde		1.27 ⁶⁸	0.41 ³⁸	4.2 ⁴⁰	8.6 ⁶¹	16.5 ⁶³	30.1 ²⁵	111.3 ¹⁶	-1.4 ¹⁶	-	33.7 ¹⁸	25.8 ²⁰	15 ²⁰	14.9 ²¹	-3 ¹¹	In Vitro		
Metings		31			192 ⁽¹⁰⁸⁾	208 ⁽⁹⁸⁾	289 ⁽¹⁰¹⁾	-	-	-								



SA STAMBOEK
STUD BOOK

Driegerasiestamboom

saamgestel deur die S.A. Stamboek- en Diereverbeteringsvereniging

TULI



LOT 41

0696894000
ALPHA OMEGA TULI STUD PTY LTD
POSBUS 78
BURGERSDORP
9744

Naam ALPHA OMEGA AM 230064

Ident. nommer: AM 230064
Reg. nommer: 0096354477
Geboorte Datum: 02/10/23
Geslag: Vroulik
DNA Nr:
INTELING: 11%
Afdeling: SP
Onderafdeling:
Koei/Kalf verh. Gebrte (GGV): -
HORING STATUS:

Vaar: GLEN HEATH GH170001 - 05/09/17
GH 170001 0085952604
HORING STATUS P
Afdeling SP DNA Nr U13340U012



Moer: ALPHA OMEGA AM 200097 - 01/10/20
AM 200097 0091919381
HORING STATUS P
Gem TKP: 410 (2) OEK: 36 (GGV: -)
Kalwings: 10/23 11/24
Afdeling SP DNA Nr

P.G. Vaar: HBH HBH140043 - 05/10/14
HBH 140043 0080248537
HORING STATUS SC
Afdeling SP DNA Nr U351066

P.G. Moer: GLEN HEATH GH140018 - 22/09/14
GH 140018 0080422744
HORING STATUS SC
Gem TKP: 389 (5) OEK: 35 (GGV: -)
Afdeling B DNA Nr

M.G. Vaar: GENERAALSDRAAI 05 89 - BUFFEL - 11/11/05
H 050089 0062490305
HORING STATUS P
Afdeling SP DNA Nr AS003270

M.G. Moer: ALPHA OMEGA AM160146 - 30/10/16
AM 160146 0085278455
HORING STATUS PcPc
Gem TKP: 373 (7) OEK: 34 (GGV: -)
Afdeling SP DNA Nr USC069549

05/2026	KALF GEMAK ★★★		MELK ★★★★	KALFGROEI ★★★★	ONDERHOUD ★★★★		GROEI TOETS					VRUGBAARHEID ★★★★			KOEI WAARDE ★★★★	GROEI WAARDE ★★★	PRODUKSIE WAARDE -
	82 ⁶⁹		114 ⁵³	101 ⁷⁰	100 ⁵²		106 ³⁵										
Seleksie Waarde	Geb gew	Geb Mat	Melk	Speen gew	Naspeen	Volw. gewig	GDT	Kleiber	VOV	Lengte	Hoogte	SO	OEK	TKP			
TW Indeks	86	89	114	101	98	97	99	105	98	95	91	99	109	104	107 ⁵²	99 ²⁴	105 ⁴⁶
Teelwaarde	2.17 ⁷⁴	0.41 ⁵⁰	5.8 ⁵³	7.2 ⁷⁰	9.7 ⁶⁵	15.6 ⁵²	86.5 ³⁸	3.5 ³⁸	15.9 ⁹	19.4 ³⁸	9.2 ⁴²	12.3 ⁴²	-9.9 ⁴⁴	-3.3 ²⁶	In Vitro		
Metings	35			245 ⁽⁸⁶⁾	263 ⁽¹⁰⁵⁾	343 ⁽¹⁰⁰⁾	-	-	-								



SA STAMBOEK
STUD BOOK

Driegerasiestamboom

saamgestel deur die S.A. Stamboek- en Diereverbeteringsvereniging

TULI



LOT 42

0723984000
ALPHA OMEGA TULI OOS
H/A HUMANSRUS BOERDERY BK
POSBUS 287, KLEINFONTEIN
DORDRECHT
5435

P.G. Vaar:

LANGLYF TANK JR - 07/10/13
R 130166 0078765161

HORING
STATUS

Afdeling SP

DNA Nr P375/16

Vaar:

LANGLYF R 180091 - 28/08/18
R 180091 0087989026

HORING
STATUS

Afdeling SP

DNA Nr U13305U004

P.G. Moer:

LANGLYF 14206 - 23/10/14
R 140206 0081026270

HORING
STATUS

Gem TKP: 366 (7)

OEK: 34 (GGV: -)

Afdeling SP

DNA Nr

Naam

ALPHA OMEGA AM 240035



Ident. nommer: AM 240035
Reg. nommer: 0096929856
Geboorte Datum: 07/04/24
Geslag: Vroulik
DNA Nr: U22124U030
INTELING: 6%
Afdeling: SP
Onderafdeling:
Koei/Kalf verh. Gebрте (GGV): -
HORING STATUS: P

Moer:

ALPHA OMEGA AM 190161 - 31/10/19
AM 190161 0090420829

HORING
STATUS

Gem TKP: 550 (3) OEK: 36 (GGV: -)

Kalwings: 11/22 04/24 11/25

Afdeling SP

DNA Nr

M.G. Vaar:

BLOMVLEI 10 0022 - 09/06/10
SW 100022 0071011803

HORING
STATUS

H

Afdeling SP

DNA Nr ASC004832

M.G. Moer:

RITS W 140019 - 14/08/14
W 140019 0080012131

HORING
STATUS

P

Gem TKP: 439 (7)

OEK: 37 (GGV: -)

Afdeling SP

DNA Nr

Toekennings:

Elite-Silwer (2024)

05/2026	KALF GEMAK ★★★		MELK ★★★★	KALFGROEI ★★★★	ONDERHOUD ★★★	GROEI TOETS					VRUGBAARHEID ★★★★			KOEI WAARDE ★★★★	GROEI WAARDE	PRODUKSIE WAARDE
	95 68		100 46	101 56	99 41		104 ²⁸									
Seleksie Waarde	Geb gew	Geb Mat	Melk	Speen gew	Naspeen	Volw. gewig	GDT	Kleiber	VOV	Lengte	Hoogte	SO	OEK	TKP		
TW Indeks	99	87	100	101	95	100	97	101	-	103	101	102	97	105	102 ₄₄	-
Teelwaarde	1.09 ₇₃	0.48 ₄₆	1.6 ₄₆	7.4 ₅₆	8.2 ₅₄	18.3 ₄₁	82.8 ₂₃	0.4 ₂₃	-	24.6 ₂₄	15 ₂₆	14 ₂₇	-3.8 ₃₇	-3.5 ₂₀	In Vitro	
Metings	29			198 ₍₁₀₀₎	- ₍₋₎	265 ₍₁₀₀₎	-	-	-							



SA STAMBOEK
STUD BOOK

Driegerasiestamboom

saamgestel deur die S.A. Stamboek- en Diereverbeteringsvereniging

TULI



LOT 43

0696894000
ALPHA OMEGA TULI STUD PTY LTD
POSBUS 78
BURGERSDORP
9744

Naam

ALPHA OMEGA AM 230525

Ident. nommer: AM 230525
Reg. nommer: 0096370564
Geboorte Datum: 18/11/23
Geslag: Vroulik
DNA Nr:
INTELING: 19%
Afdeling: SP
Onderafdeling:
Koei/Kalf verh. Gebрте (GGV): -
HORING STATUS:

Vaar:
HORING
STATUS

ALPHA OMEGA AM 190021 - 16/02/19
AM 190021 0088641600
Afdeling SP DNA Nr U13340U003



Moer:
HORING
STATUS

ALPHA OMEGA AM 180172 - 06/11/18
AM 180172 0088618590
P
Gem TKP: 386 (4) OEK: 35 (GGV: -)
Kalwings: 10/21 11/22 11/23 12/24
Afdeling SP DNA Nr

P.G. Vaar:
HORING
STATUS

ALPHA OMEGA AM110102 - 27/10/11
AM 110102 0074391665
PcH
Afdeling SP DNA Nr USC066377

P.G. Moer:
HORING
STATUS

ALPHA OMEGA AM140048 - 03/10/14
AM 140048 0081386880
P
Gem TKP: 438 (3) OEK: 35 (GGV: -)
Afdeling SP DNA Nr

M.G. Vaar:
HORING
STATUS

ALPHA OMEGA AM110102 - 27/10/11
AM 110102 0074391665
PcH
Afdeling SP DNA Nr USC066377

M.G. Moer:
HORING
STATUS

ALPHA OMEGA AM140072 - 16/12/14
AM 140072 0081389173
SC
Gem TKP: 392 (2) OEK: 34 (GGV: -)
Afdeling SP DNA Nr

05/2026	KALF GEMAK ★★★		MELK ★★★	KALFGROEI ★★★★	ONDERHOUD ★★★	GROEI TOETS						VRUGBAARHEID ★★★			KOEI WAARDE ★★★	GROEI WAARDE	PRODUKSIE WAARDE
	82 ⁶⁷		88 ⁴⁴	106 ⁶⁸	96 ³⁶	GDT	Kleiber	VOV	Lengte	Hoogte	SO	OEK	TKP				
Seleksie Waarde	Geb gew	Geb Mat	Melk	Speen gew	Naspeen	Volw. gewig											
TW Indeks	84	95	88	106	100	103	92	90	86	90	79	86	97	93	90 ⁴⁶	-	-
Teelwaarde	2.37 ⁷³	0.2 ⁴³	-1.8 ⁴⁴	9.4 ⁶⁸	10.8 ⁵⁴	22.2 ³⁶	71.6 ²⁶	-10.3 ²⁶	-5.3 ⁸	16.5 ²⁶	2.6 ²⁸	6.6 ²⁸	-4 ³³	-1.4 ²⁰	In Vitro		
Metings	34			173 ⁽⁹⁵⁾	- ⁽⁻⁾	266 ⁽⁹⁷⁾	-	-	-								



SA STAMBOEK
STUD BOOK

Driegerasiestamboom

saamgestel deur die S.A. Stamboek- en Diereverbeteringsvereniging

TULI



LOT 44

0723984000
ALPHA OMEGA TULI OOS
H/A HUMANSRUS BOERDERY BK
POSBUS 287, KLEINFONTEIN
DORDRECHT
5435

Naam ALPHA OMEGA AM 230276

Ident. nommer: AM 230276
Reg. nommer: 0096367214
Geboorte Datum: 12/11/23
Geslag: Vroulik
DNA Nr: U22124U024
INTELING: 7%
Afdeling: SP
Onderafdeling:
Koei/Kalf verh. Gebрте (GGV): -
HORING STATUS: P

Vaar: ALPHA OMEGA AM 180096 - 08/10/18
AM 180096 0088617535
SC
Afdeling SP DNA Nr U13305U002



Moer: ALPHA OMEGA AM 200182 - 27/10/20
AM 200182 0091921007
P
Afdeling SP DNA Nr
Gem TKP: 613 (2) OEK: 37 (GGV: -)
Kalwings: 11/23 07/25

P.G. Vaar: ALPHA OMEGA AM150059 - 20/09/15
AM 150059 0083224048
P
Afdeling SP DNA Nr LSTB529697

P.G. Moer: ALPHA OMEGA AM160078 - 05/09/16
AM 160078 0085278315
P
Gem TKP: 377 (3) OEK: 25 (GGV: -)
Afdeling SP DNA Nr

M.G. Vaar: ALPHA OMEGA AM 150071 - 09/10/15
AM 150071 0084002575
P
Afdeling SP DNA Nr U13340U022

M.G. Moer: ALPHA OMEGA AM130115 - 07/10/13
AM 130115 0079773891
P
Gem TKP: 406 (9) OEK: 35 (GGV: -)
Afdeling SP DNA Nr

05/2026	KALF GEMAK ★★★★		MELK ★★★★	KALFGROEI ★★★★	ONDERHOUD ★★	GROEI TOETS					VRUGBAARHEID ★★★★			KOEI WAARDE ★★★★	GROEI WAARDE	PRODUKSIE WAARDE
	100 ⁶⁵		100 ⁴¹	116 ⁶⁸	78 ³⁴	GDT	Kleiber	VOV	Lengte	Hoogte	SO	OEK	TKP			
Seleksie Waarde	Geb gew	Geb Mat	Melk	Speen gew	Naspeen	Volw. gewig										
TW Indeks	104	86	100	116	122	127	111	105	105	114	107	107	108	101	111 ⁴⁴	-
Teelwaarde	0.66 ⁷²	0.5 ³⁹	1.8 ⁴¹	13.3 ⁶⁸	22.2 ⁶⁰	47 ³⁴	110.5 ²⁵	3.7 ²⁵	-21.5 ⁵	31.4 ²⁶	18.1 ²⁹	16.2 ³⁰	-9.3 ³¹	-2.8 ¹⁸	In Vitro	
Metings	27			192 ⁽¹¹⁰⁾	228 ⁽¹¹¹⁾	303 ⁽¹⁰⁰⁾	-	-	-							



SA STAMBOEK
STUD BOOK

Driegerasiestamboom

saamgestel deur die S.A. Stamboek- en Diereverbeteringsvereniging

TULI



LOT 45

0723984000
ALPHA OMEGA TULI OOS
H/A HUMANSRUS BOERDERY BK
POSBUS 287, KLEINFONTEIN
DORDRECHT
5435

P.G. Vaar:

HORING
STATUS

BLOMVLEI 10 0022 - 09/06/10
SW 100022 0071011803

P

Afdeling SP

DNA Nr ASC004832

Vaar:

HORING
STATUS

ALPHA OMEGA AM 150071 - 09/10/15
AM 150071 0084002575

P

Afdeling SP

DNA Nr U13340U022

P.G. Moer:

HORING
STATUS

ALPHA OMEGA AM110084 - 19/10/11
AM 110084 0075655530

P

Gem TKP: 417 (10)

OEK: 35 (GGV: -)

Afdeling SP

DNA Nr

Toekennings:

Elite-Silwer (2023)

Naam

ALPHA OMEGA AM 230060



Ident. nommer:

AM 230060

Reg. nommer:

0096354428

Geboorte Datum:

02/09/23

Geslag:

Vroulik

DNA Nr:

INTELING:

27%

Afdeling:

SP

Onderafdeling:

Koei/Kalf verh. Gebрте (GGV): -

HORING STATUS:

Moer:

HORING
STATUS

ALPHA OMEGA AM110084 - 19/10/11
AM 110084 0075655530

P

Gem TKP: 417 (10) OEK: 35 (GGV: -)
Kalwings: 09/14 10/15 10/16 11/17 10/18 11/19 11/20
11/21 09/23 12/24

Afdeling SP

DNA Nr

Toekennings:

Elite-Silwer (2023)

M.G. Vaar:

HORING
STATUS

EIRA AVR060051 - 31/10/06
AVR 060051 0064103401

PP

Afdeling SP

DNA Nr U344764

M.G. Moer:

HORING
STATUS

ALPHA OMEGA AM030006 - 15/07/03
AM 030006 0062425053

Gem TKP: 396 (11)

OEK: 38 (GGV: -)

Afdeling B

DNA Nr

05/2026

Seleksie Waarde

TW Indeks

Teelwaarde

Metings

KALF GEMAK ★★★	MELK ★★★★	KALFGROEI ★★★	ONDERHOUD ★★★	GROEI TOETS							VRUGBAARHEID ★★★★			KOEI WAARDE ★★★★	GROEI WAARDE ★★★	PRODUKSIE WAARDE
				Geb gew	Geb Mat	Melk	Speen gew	Naspeen	Volw. gewig	GDT	Kleiber	VOV	Lengte			
89 ⁷¹	115 ⁵⁷	95 ⁶²	92 ⁵²								108 ³⁴					
95	82	115	95	91	106	90	100	-	94	101	93	113	103	103 ⁵⁰	88 ²⁰	99 ⁴⁴
1.45 ⁷⁵	0.64 ⁵⁷	6.1 ⁵⁷	4.7 ⁶²	5.8 ⁵⁷	25.1 ⁵²	67.5 ³⁰	-1.1 ³⁰	-	18.8 ³³	15 ³⁷	9.4 ³⁹	-12 ⁴⁴	-3.2 ²⁴	In Vitro		
36		188 ⁽¹⁰⁰⁾	248 ⁽⁹⁸⁾	- ⁽⁻⁾												



SA STAMBOEK
STUD BOOK

Driegerasiestamboom

saamgestel deur die S.A. Stamboek- en Diereverbeteringsvereniging

TULI



LOT 46

0723984000
ALPHA OMEGA TULI OOS
H/A HUMANSRUS BOERDERY BK
POSBUS 287, KLEINFONTEIN
DORDRECHT
5435

Naam ALPHA OMEGA AM 230290

Ident. nommer: AM 230290
Reg. nommer: 0096367479
Geboorte Datum: 24/11/23
Geslag: Vroulik
DNA Nr: U22124U076
INTELING: 7%
Afdeling: SP
Onderafdeling:
Koei/Kalf verh. Gebрте (GGV): -
HORING STATUS: P

Vaar: ALPHA OMEGA AM 180096 - 08/10/18
AM 180096 0088617535
SC
Afdeling SP DNA Nr U13305U002

Moer: ALPHA OMEGA AM 200177 - 26/10/20
AM 200177 0091920975
Afdeling SP DNA Nr

P.G. Vaar: ALPHA OMEGA AM150059 - 20/09/15
AM 150059 0083224048
HORING STATUS P
Afdeling SP DNA Nr LSTB529697

P.G. Moer: ALPHA OMEGA AM160078 - 05/09/16
AM 160078 0085278315
HORING STATUS P
Gem TKP: 377 (3) OEK: 25 (GGV: -)
Afdeling SP DNA Nr

M.G. Vaar: GREAT KAROO XY 120065 - 09/10/12
XY 120065 0076704790
HORING STATUS P
Afdeling SP DNA Nr U275473

M.G. Moer: GENERAALS DRAAI 08 0096 - 27/12/08
H 080096 0067759258
HORING STATUS P
Gem TKP: 403 (13) OEK: 33 (GGV: -)
Afdeling SP DNA Nr



05/2026	KALF GEMAK ★★		MELK ★★★★	KALFGROEI ★★★★★	ONDERHOUD ★★	GROEI TOETS					VRUGBAARHEID ★★★			KOEI WAARDE ★★★★	GROEI WAARDE	PRODUKSIE WAARDE
	78 ⁶⁶		100 ⁴³	125 ⁶⁸	77 ³⁸	GDT	Kleiber	VOV	Lengte	Hoogte	SO	OEK	TKP			
Seleksie Waarde	Geb gew	Geb Mat	Melk	Speen gew	Naspeen	Volw. gewig										
TW Indeks	83	84	100	125	136	128	124	102	103	122	109	113	99	98	109 ⁴⁶	-
Teelwaarde	2.44 ⁷²	0.59 ⁴¹	1.7 ⁴³	17.2 ⁶⁸	29.4 ⁶⁸	48.6 ³⁸	134.7 ²⁹	1.3 ²⁹	20.1 ⁷	36.6 ³⁰	19.2 ³²	18.7 ³³	-5 ³³	-2.2 ¹⁹	In Vitro	
Metings	33			200 ⁽¹¹²⁾	241 ⁽¹¹⁵⁾	336 ⁽¹¹⁴⁾	-	-	-							



SA STAMBOEK
STUD BOOK

Driegerasiestamboom

saamgestel deur die S.A. Stamboek- en Diereverbeteringsvereniging

TULI



LOT 47

0696894000
ALPHA OMEGA TULI STUD PTY LTD
POSBUS 78
BURGERSDORP
9744

Naam ALPHA OMEGA AM 230563

Ident. nommer: AM 230563
Reg. nommer: 0098850662
Geboorte Datum: 20/12/23
Geslag: Vroulik
DNA Nr:
INTELING: 5%
Afdeling: SP
Onderafdeling:
Koei/Kalf verh. Gebrte (GGV): -
HORING STATUS:

Vaar: ALPHA OMEGA AM 190093 - 01/10/19
AM 190093 0090396292
SC
Afdeling SP DNA Nr U13340U010

HORING
STATUS



Moer: ALPHA OMEGA AM150004 - 08/01/15
AM 150004 0083223925
P
Afdeling SP DNA Nr

HORING
STATUS

Gem TKP: 380 (8) **OEK:** 33 (GGV: -)
Kalwings: 10/17 10/18 10/19 10/20 10/21 11/22 12/23
01/25

P.G. Vaar: CASMAN CHKK100138 - 03/12/10
CHK 100138 0072214653
P
Afdeling SP DNA Nr U192280

HORING
STATUS

P.G. Moer: BUROWILL 2009-0045 - 17/12/09
ASE 090045 0069934388
P
Gem TKP: 413 (9) **OEK:** 33 (GGV: 5.64)
Afdeling SP DNA Nr

HORING
STATUS

M.G. Vaar: HBH HBH 060976 - 27/09/06
HBH 060976 0063656318
P
Afdeling SP DNA Nr AS003311

HORING
STATUS

M.G. Moer: RITS 0425 - 29/10/04
W 040025 0061433223
P
Gem TKP: 407 (12) **OEK:** 34 (GGV: -)
Afdeling SP DNA Nr

HORING
STATUS

05/2026	KALF GEMAK ★★★		MELK ★★★	KALFGROEI ★★★★	ONDERHOUD ★★★		GROEI TOETS					VRUGBAARHEID ★★★★			KOEI WAARDE ★★★★	GROEI WAARDE ★★★★	PRODUKSIE WAARDE
	99 ⁶⁸	87 ⁵¹	110 ⁶⁸	85 ⁴⁸	GDT	Kleiber	VOV	Lengte	Hoogte	SO	OEK	TKP					
Seleksie Waarde	Geb gew	Geb Mat	Melk	Speen gew	Naspeen	Volw. gewig	111	112	111	112	122	105	94	109	102 ⁵⁰	107 ²⁰	-
TW Indeks	99	97	87	110	113	118	111	112	111	112	122	105	94	109	102 ⁵⁰	107 ²⁰	102 ⁴⁴
Teelwaarde	1.04 ⁷³	0.13 ⁴⁹	-2.2 ⁵¹	10.9 ⁶⁸	17.3 ⁵⁶	37.2 ⁴⁸	109.6 ³²	10.1 ³²	-26.9 ⁶	30.3 ³³	26.5 ³⁵	15 ³⁶	-2.2 ³⁸	-4.1 ²⁴	In Vitro		
Metings	28			225 ⁽¹¹³⁾	- ⁽⁻⁾	289 ⁽¹⁰⁹⁾	-	-	-								



LOT 48

0723984000
ALPHA OMEGA TULI OOS
H/A HUMANSRUS BOERDERY BK
POSBUS 287, KLEINFONTEIN
DORDRECHT
5435

Naam ALPHA OMEGA AM 230314

Ident. nommer: AM 230314
Reg. nommer: 0096772850
Geboorte Datum: 15/12/23
Geslag: Vroulik
DNA Nr: U22124U036
INTELING: 5%
Afdeling: SP
Onderafdeling:
Koei/Kalf verh. Gebрте (GGV): -
HORING STATUS: P

Vaar: ALPHA OMEGA AM110109 - 29/10/11
AM 110109 0074950015
HORING STATUS: P
Afdeling SP DNA Nr AS010594



Moer: BUSHMANS CHR18-041 - 02/09/18
CHR 180041 0087581039
HORING STATUS: P
Gem TKP: 396 (4) OEK: 36 (GGV: 5.6)
Kalwings: 09/21 12/22 12/23 12/24
Afdeling SP DNA Nr U515668

P.G. Vaar: GENERAALSDRAAI 05 89 - BUFFEL - 11/11/05
H 050089 0062490305
HORING STATUS: -
Afdeling SP DNA Nr AS003270

P.G. Moer: HBH HBH 98 330 - 10/10/98
HBH 980330 0041546003
HORING STATUS:
Gem TKP: 404 (13) OEK: 36 (GGV: -)
Afdeling B DNA Nr

M.G. Vaar: ALPHA OMEGA AM110116 - 02/11/11
AM 110116 0074946864
HORING STATUS: Pch
Afdeling SP DNA Nr US025383

M.G. Moer: AMELIA V090091 - 13/11/09
V 090091 0070425897
HORING STATUS: P
Gem TKP: 361 (10) OEK: 35 (GGV: -)
Afdeling SP DNA Nr

05/2026	KALF GEMAK ★★★★		MELK ★★★★	KALFGROEI ★★★	ONDERHOUD ★★★★	GROEI TOETS					VRUGBAARHEID ★★★★			KOEI WAARDE ★★★	GROEI WAARDE ★★★	PRODUKSIE WAARDE -	
	106 ⁷¹		103 ⁵⁷	87 ⁷¹	102 ⁴⁸	GDT	Kleiber	VOV	Lengte	Hoogte	SO	OEK	TKP				
Seleksie Waarde	Geb gew	Geb Mat	Melk	Speen gew	Naspeen	Volw. gewig											
TW Indeks	108	93	103	87	87	96	91	103	87	87	88	84	112	106	98 ⁵³	90 ²⁴	95 ⁴⁷
Teelwaarde	0.33 ⁷⁵	0.26 ⁵⁵	2.5 ⁵⁷	1.6 ⁷¹	4 ⁶²	14.4 ⁴⁸	70.2 ³⁷	1.9 ³⁷	-6.1 ⁹	14.5 ³⁸	7.9 ⁴¹	5.6 ⁴²	11.3 ⁴⁴	-3.7 ²⁸	In Vitro		
Metings	32			177 ⁽⁹⁷⁾	188 ⁽⁸⁶⁾	278 ⁽¹⁰⁰⁾	-	-	-								



SA STAMBOEK
STUD BOOK

Driegerasiestamboom

saamgestel deur die S.A. Stamboek- en Diereverbeteringsvereniging

TULI



LOT 49

0723984000
ALPHA OMEGA TULI OOS
H/A HUMANSRUS BOERDERY BK
POSBUS 287, KLEINFONTEIN
DORDRECHT
5435

Naam ALPHA OMEGA AM 230277

Ident. nommer: AM 230277
Reg. nommer: 0096367222
Geboorte Datum: 14/11/23
Geslag: Vroulik
DNA Nr: U22124U042
INTELING: 6%
Afdeling: SP
Onderafdeling:
Koei/Kalf verh. Gebрте (GGV): -
HORING STATUS: P

Vaar: ALPHA OMEGA AM 190158 - 30/10/19
AM 190158 0090420860
HORING STATUS P
Afdeling SP DNA Nr U13340U021



Moer: ALPHA OMEGA AM 180113 - 15/10/18
AM 180113 0090397456
HORING STATUS P
Gem TKP: 372 (5) OEK: 37 (GGV: -)
Kalwings: 11/21 11/22 11/23 11/24 12/25
Afdeling SP DNA Nr

P.G. Vaar: ALPHA OMEGA AM 150071 - 09/10/15
AM 150071 0084002575
HORING STATUS P
Afdeling SP DNA Nr U13340U022

P.G. Moer: ALPHA OMEGA AM160078 - 05/09/16
AM 160078 0085278315
HORING STATUS P
Gem TKP: 377 (3) OEK: 25 (GGV: -)
Afdeling SP DNA Nr

M.G. Vaar: CASMAN CHKK100138 - 03/12/10
CHK 100138 0072214653
HORING STATUS P
Afdeling SP DNA Nr U192280

M.G. Moer: BUROWILL 2010 1019 - 19/10/10
ASE 100019 0071718977
HORING STATUS P
Gem TKP: 419 (8) OEK: 35 (GGV: 7.5)
Afdeling SP DNA Nr

05/2026	KALF GEMAK ★★★		MELK ★★★	KALFGROEI ★★★★	ONDERHOUD ★★★		GROEI TOETS					VRUGBAARHEID ★★★★			KOEI WAARDE ★★★★	GROEI WAARDE	PRODUKSIE WAARDE
	98 ⁶⁸		93 ⁴⁷	115 ⁶⁹	90 ³⁸							108 ²⁷					
Seleksie Waarde	Geb gew	Geb Mat	Melk	Speen gew	Naspeen	Volw. gewig	GDT	Kleiber	VOV	Lengte	Hoogte	SO	OEK	TKP			
TW Indeks	98	100	93	115	112	111	112	103	-	116	117	113	106	107	112 ⁴⁷	-	-
Teelwaarde	1.19 ⁷⁴	0.03 ⁴⁵	-0.3 ⁴⁷	13.1 ⁶⁹	16.7 ⁶⁸	29.8 ³⁸	111.3 ²⁵	1.7 ²⁵	-	33.2 ²⁶	24 ²⁹	18.7 ³⁰	-8.4 ³⁴	-3.8 ²⁰	In Vitro		
Metings	30			182 ⁽¹⁰²⁾	201 ⁽⁹⁴⁾	276 ⁽⁹²⁾	-	-	-								

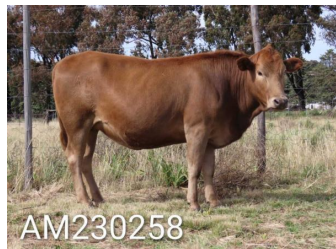


SA STAMBOEK
STUD BOOK

Driegerasiestamboom

saamgestel deur die S.A. Stamboek- en Diereverbeteringsvereniging

TULI



LOT 50

0723984000
ALPHA OMEGA TULI OOS
H/A HUMANSRUS BOERDERY BK
POSBUS 287, KLEINFONTEIN
DORDRECHT
5435

P.G. Vaar:

HORING
STATUS

GENERAALSDRAAI 05 89 - BUFFEL - 11/11/05
H 050089 0062490305

P

Afdeling SP

DNA Nr AS003270

Vaar:

HORING
STATUS

ALPHA OMEGA AM 180161 - 29/10/18
AM 180161 0090457243

P

Afdeling SP

DNA Nr U13305U003

P.G. Moer:

HORING
STATUS

ALPHA OMEGA AM110084 - 19/10/11
AM 110084 0075655530

P

Gem TKP: 417 (10)

OEK: 35 (GGV: -)

Afdeling SP

DNA Nr

Toekennings:

Elite-Silwer (2023)

Moer:

HORING
STATUS

ALPHA OMEGA AM 180152 - 27/10/18
AM 180152 0088617774

P

Gem TKP: 353 (3)

OEK: 37 (GGV: -)

Kalwings: 11/21 10/22 11/23

Afdeling SP

DNA Nr

M.G. Vaar:

HORING
STATUS

GENERAALSDRAAI 05 89 - BUFFEL - 11/11/05
H 050089 0062490305

P

Afdeling SP

DNA Nr AS003270

M.G. Moer:

HORING
STATUS

ALPHA OMEGA AM070038 - 26/10/07
AM 070038 0065581480

P

Gem TKP: 414 (8)

OEK: 34 (GGV: -)

Afdeling SP

DNA Nr U164580

Naam

ALPHA OMEGA AM 230258

Ident. nommer: AM 230258
Reg. nommer: 0096367057
Geboorte Datum: 05/11/23
Geslag: Vroulik
DNA Nr: U22124U017
INTELING: 17%
Afdeling: SP
Onderafdeling:
Koei/Kalf verh. Gebрте (GGV): -
HORING STATUS: P



05/2026

Seleksie Waarde

TW Indeks
Teelwaarde
Metings

KALF GEMAK ★★★	MELK ★★★	KALFGROEI ★★★★	ONDERHOUD ★★★	GROEI TOETS							VRUGBAARHEID ★★★★			KOEI WAARDE ★★★★	GROEI WAARDE ★★★	PRODUKSIE WAARDE
				86 69		96 49		110 70		89 44		112 35				
Geb gew	Geb Mat	Melk	Speen gew	Naspeen	Volw. gewig	GDT	Kleiber	VOV	Lengte	Hoogte	SO	OEK	TKP	In Vitro		
89	91	96	110	110	111	96	96	93	97	88	81	98	114	109 51	99 25	107 46
1.94 74	0.32 47	0.5 49	11 70	16.2 60	30.6 44	80.5 37	-4.5 37	-11.7 12	20.6 38	7.9 39	4.2 39	-4.3 41	-5.1 29			
32			166 (90)	207 (97)	263 (100)	-	-	-								



SA STAMBOEK
STUD BOOK

Driegerasiestamboom

saamgestel deur die S.A. Stamboek- en Diereverbeteringsvereniging

TULI



LOT 51

0723984000
ALPHA OMEGA TULI OOS
H/A HUMANSRUS BOERDERY BK
POSBUS 287, KLEINFONTEIN
DORDRECHT
5435

Naam ALPHA OMEGA AM 230308

Ident. nommer: AM 230308
Reg. nommer: 0096638283
Geboorte Datum: 11/12/23
Geslag: Vroulik
DNA Nr: U22124U080
INTELING: 5%
Afdeling: SP
Onderafdeling:
Koei/Kalf verh. Gebрте (GGV): -
HORING STATUS: P

Vaar: ALPHA OMEGA AM 190158 - 30/10/19
AM 190158 0090420860
HORING STATUS P
Afdeling SP DNA Nr U13340U021



Moer: ALPHA OMEGA AM 170120 - 19/10/17
AM 170120 0086705506
HORING STATUS P
Gem TKP: 417 (6) OEK: 30 (GGV: -)
Kalwings: 04/20 10/21 12/22 12/23 12/24 12/25
Afdeling SP DNA Nr

P.G. Vaar: ALPHA OMEGA AM 150071 - 09/10/15
AM 150071 0084002575
HORING STATUS P
Afdeling SP DNA Nr U13340U022

P.G. Moer: ALPHA OMEGA AM160078 - 05/09/16
AM 160078 0085278315
HORING STATUS P
Gem TKP: 377 (3) OEK: 25 (GGV: -)
Afdeling SP DNA Nr

M.G. Vaar: ALPHA OMEGA AM110109 - 29/10/11
AM 110109 0074950015
HORING STATUS P
Afdeling SP DNA Nr AS010594

M.G. Moer: ALPHA OMEGA AM120223 - 02/12/12
AM 120223 0077178283
HORING STATUS P
Gem TKP: 410 (9) OEK: 33 (GGV: -)
Afdeling SP DNA Nr

05/2026		KALF GEMAK ★★★		MELK ★★★★	KALFGROEI ★★★★	ONDERHOUD ★★★	GROEI TOETS					VRUGBAARHEID ★★★★★			KOEI WAARDE	GROEI WAARDE	PRODUKSIE WAARDE	
Seleksie Waarde		97 68		108 47	104 69	90 37							132 26			★★★★★	-	-
		Geb gew	Geb Mat	Melk	Speen gew	Naspeen	Volw. gewig	GDT	Kleiber	VOV	Lengte	Hoogte	SO	OEK	TKP			
TW Indeks		102	82	108	104	106	109	107	95	93	109	105	105	138	125	126 47	-	-
Teelwaarde		0.83 74	0.65 45	4 47	8.3 69	13.8 60	28.4 37	101 25	-5.2 25	-11 5	28.3 26	16.9 29	15.1 29	24.6 34	-6.9 19	In Vitro		
Metings		30			194 (110)	214 (102)	306 (99)	-	-	-								

BKB

The Trusted Home of Agriculture
Die Betroubare Tuiste van Landbou

EN VERKOPERS

SÊ

BAIE DANKIE

VIR U

ONDERSTEUNING!

VEILINGSREÛLS, BEDINGE EN VOORWAARDES

1. Hierdie veiling word gehou onder die beheer van BKB Beperk/ BKB van Wyk (Edms) Beperk/ BKBLouwid (Edms) Beperk (hierna "die Afslaer" genoem) met besigheidspersone geleë te: Kerkstraat 15 Cradock.
2. Die Afslaer word hier deur benoem deur die Koper en Verkoper om op te tree vir en namens die Koper en Verkoper as agent in ooreenstemming met Artikel 54 van die Belasting op Toegevoegde Waarde Wet, 1991, ten opsigte van alle belasting fakture, krediet en / of debiet notas ten opsigte lewendehawe, wild en/of ander goedere aangebied by die veiling of enige koste van vervoer en versekering spremies wat namens die Koper en Verkoper betaal is.
3. Die reëls van hierdie veiling is ooreenkomstig met die bepalings van Art 45 en alle relevante regulasies tot die Verbruikers Beskermings Wet Nr 68 van 2008.
4. Vir groter duidelikheid, bepaal Art 45(1-4) soos volg:
 - 4.1 Wanneer na veilings verwys word, sluit dit ekskusie verkopings gemagtig deur 'n hofbevel in, insover die hofbevel vereis dat die verkope van bates deur middel van 'n veiling moet plaasvind.
 - 4.2 Wanneer bates in lotte te koop aangebied word op 'n veiling, elke lot, tot die teendeel bewys word, geag word 'n aparte transaksie te wees.
 - 4.3 Verkope deur middel van 'n veiling word as finaal beskou wanneer die Afslaer die verkoop van 'n spesifieke item of lot as voltooid aankondig deur die val van die hamer of op enige ander gebruiklike manier. Tot en met hierdie aankondiging, kan 'n bod herroep word.
 - 4.4 Vroegtydige kennis moet gegee word as die veiling en/of lot onderworpe is aan:
 - 4.4.1 'n Reserwe of minimum bod; of
 - 4.4.2 Die reg van die eienaar of Afslaer om op die veiling te bly, of enige ander persoon namens die eienaar of Afslaer te bly.
5. Tot en met die toestaan van 'n bod deur die Afslaer, soos bedoel in Art 45(3), is die Afslaer geregtig om enige bod te verwerp wat nie aan die regulasies voldoen nie en die hoogste bod aan te wys.
6. Hierdie veiling is nie 'n absolute veiling nie, maar onderworpe aan reserwe pryse vasgestel deur die Verkoper en uitgewys deur die Afslaer voor die verkoop van elke bate of lot.
7. Hierdie veiling sal op die datum en tyd begin soos geadverteer of gepubliseer en sal nie uitgestel of later begin om enige lid of groep van die publiek in staat te stel om aan die veiling te mag deelneem nie.
8. Indien die Afslaer bewus raak van enige fout op advertensie materiaal of enige ander publikasie of enige wysiging in hierdie veilingreëls, sal die Afslaer spesifiek die wysigings in die reëls uitwys sowel as die foute in die advertensie of publikasie.
9. Enige persoon wat die veiling bywoon om self te bly moet, voor die aanvang van die veiling, registreer as 'n Koper op die kopersrol en voldoen aan die vereistes soos voorgeskryf in Hoofstuk 1 van FICA 2001 en die kopersrol/koperskaart onderteken.
10. Enige persoon wat die veiling bywoon om namens 'n ander persoon te bly, moet behoorlik daartoe gemagtig word deur middel van 'n magtigingskrywe van sy prinsipaal en beide die persoon en sy prinsipaal moet voor die veiling op die kopersrol registreer deur die nodige informasie te verskaf soos voorgeskryf in Hoofstuk 1 van die regulasies uitgereik in terme van FICA 2001 ten opsigte van die bewys van identiteit en moet die kopersrol/koperskaart onderteken.
11. Waar die prinsipaal 'n maatskappy is, sal die magtigingskrywe op die briefhoof van die maatskappy verskyn en vergesel word met 'n gesertifiseerde afskrif van die resoluë wat die persoon magtig om so te doen. (Vir doeleindes van hierdie reël, sluit die verwysing na maatskappy ook 'n verwysing in na enige juridiese persoon, insluitend vennootskappe, trusts of regsliggame).
12. Alle Kopers het 'n reg om die bates te koop aangebied te inspekteer en die Afslaer sal redelike tyd en toegang hiervoor toelaat voor aanvang van die veiling.
13. Alle lewendehawe, wild en bates word voetstoots verkoop en die Kopers geniet nie die beskerming soos uiteengesit in Art 55 en 56 van die Verbruikers Beskermings Wet nie.
14. Enige inligting verstreë met betrekking tot die gehalte, taling, geslagsboom, ouderdom, datum van dekking, kondisie, reproduktiewe status of vermoë, vrugbaarheid, gesondheidstoestand, produksievermoë, massa of enige aspek van die lewendehawe en/of wild, word deur die Verkoper verstreë en enige wanvoorstelling deur die Verkoper is sonder die medewete of samewerking van die Afslaer. Enige verhaalsreg voortspruitend uit so 'n wanvoorstelling sal uitsluitlik teen die Verkoper wees.
15. 'n Bod gemaak sluit nie Belasting op Toegevoegde Waarde in nie. BTW sal, waar van toepassing, by die prys gebie gevoeg word op alle fakture wat uitgereik word.
16. Alle verkope geskied kontant en die koopprys is onmiddellik betaalbaar aan die Afslaer na aanvaarding van die bod, tensy vooraf anders met die Afslaer ooreengekom is. Enige kontantbetalings is verder onderworpe aan kontant of enige ander hanteringsfoë. Sou die koper egter versuim om binne 7 dae van lewering te betaal, is BKB geregtig om rente by die uitstaande bedraë te voeg bereken teen die huidige bank prima koers plus 5%, maandeliks bereken en gekapitaliseer.
17. Indien die Koper nie die koopprys onmiddellik betaal nie en verder geen gepaste reëlings met die Afslaer getref het nie, sal/kan die Afslaer die verkoop kanselleer en die bate of lot as onverkoopte bates hanteer en dit of weer aanbied op die veiling of by afloop van die veiling uit die hand uit namens die Verkoper verkoop, afhangend van die Verkoper se mandaat aan die Afslaer.
18. Eiendomsreg in die lot sal gevestig bly in die Verkoper totdat die koopprys daarvan ten volle aan die Verkoper verreken is, met die voorbehoud dat risiko in die bates of lot reeds by toestaan van die bod oorgaan na die Koper soos uiteengesit in klousule 23.
19. Indien die Koper wel vooraf gepaste reëlings met BKB getref het, magtig die Koper BKB hiermee om die koopprys, koste van vervoer en versekering of enige ander ooreengekome koste, minus BKB se kommissie, namens die Koper aan die Verkoper en ander diensverskaffers te betaal, in welke geval die gemelde koopprys, en koste geag word gelde geleen en voorgeskiet te wees, die terme waarvan ooreengekom is met die Koper in 'n aparte kredietooreenkoms of koopoooreenkoms. Alle betalings in terme van hierdie klousule wat deur BKB gemaak moet word aan die Verkoper namens die Koper sal deur BKB gemaak word na verstryking van 5 werksdae vanaf datum van lewering aan die Koper. Betalings voor verstryking van die 5 werksdae deur BKB aan die Verkoper word gemaak in die uitsluitlike diskresie van BKB en is nie 'n afdwingbare vergunning nie.
20. Solank enige bedrag hierkragtigens deur die Koper aan BKB verskuldig is, mag die Koper, waar die bates die onderwerp van sekuriteit is vir die Koper se kredietfasiliteit met BKB, nie afstand doen van die besit van die bates nie en mag die Koper nie die bates of enige van sy regte of verpligtinge kragtens hierdie ooreenkoms sedgeer, afstaan, verpand of andersins beswaar, verkoop, vervreem of aanbied om die voornoemde te doen, of toelaat dat die bates onderworpe raak aan enige retensiereg, hipoteek, pand of ander beswaring of geregtelike beslaglegging wat ookal die oorsaak daarvan nie. BKB kan sy regte en belange hierin sedgeer, afstaan of vervreem, sonder afstanddoening of benadeling van sy reg van invordering van enige gelde aan BKB verskuldig.
21. Waar die Verkoper by die aangaan van hierdie veiling reeds 'n bedrag verskuldig is aan BKB of enige filiaalmaatskappy of firma van BKB, ongeag die skuldooorsaak van sodanige verskuldigheid, magtig die Verkoper BKB onherroepelik om die koopprys hiervan (minus BKB se kommissie) teen die Verkoper se rekening te krediteer, synde betaling van die koopprys namens die Koper te wees.
22. Waar BKB, in terme van die 'n kredietooreenkoms gelde geleen of voorgeskiet het aan die Koper vir die betaling van die koopprys van die bates en die vervoerkoste en versekeringspremies, sal geen verweer hoegenaamd wat die Koper teen die Verkoper of vervoerkontraëur of versekeraar het, geopper word teen BKB nie en sal die Koper steeds verplig wees om alle bedraë, tesame met ander rente en kostes kragtens die kredietooreenkoms of koopoooreenkoms verskuldig aan BKB te betaal. Die bepalings van hierdie klousule plaas geen beperking op die Koper se reg om regte/remedies wat hy mag hê teen die Verkoper, vervoerkontraëur of versekeraar uit te oefen nie.
23. Nog die Koper nog die Verkoper sal met betrekking tot enige bedrag hierkragtigens verskuldig geregtig wees om skuldvergelyking toe te pas of betalings te weerhou ten opsigte van eise teen mekaar of teen BKB.
24. Elke lot sal onmiddellik nadat die bod toegestaan is geag word as gelewer aan die Koper en sal daarna op die uitsluitlike risiko van die Koper wees, wie op eie koste die lot of bate van die veilingsterrein sal verwyder. Verwydering van enige bates of lotte sal egter slegs toegelaat word na betaling van die koopprys deur die Koper tensy die gepaste reëlings met die Afslaer getref is en hy toegestem het tot verwydering.
25. Die Afslaer sal slegs die rede vir die veiling aankondig indien dit enige rede anders is as 'n vrywillige verkoop van goedere deur die eienaar.
26. Die kopersrol en die venduroël is beskikbaar vir geregistreerde Kopers vir inspeksie deur middel van 'n skriftelike versoek en met goeie rede, gedurende besigheidsure by die besigheidspersone van die Afslaer.
27. Hierdie veilingreëls sal slegs by die veiling uitgelees word indien dit nie beskikbaar was aan die publiek by die besigheidspersone van die Afslaer nie. In die geval van lewendehawe en/of wild veilings, bly die veilingreëls onveranderd en is dit in die algemeen beskikbaar by die besigheidspersone van die Afslaer en op die Afslaer se webtuiste.
28. BKB sal onder geen omstandighede hoegenaamd deur enigiemand aanspreeklik gehou word vir enige verlies of skade van enige aard hoegenaamd, hetsy direkte of indirekte skade of gevolgskaë of andersins gely deur enigiemand, indien die lewendehawe en/of wild op die veilingsterrein onder kwarantyn geplaas word as gevolg van die aanwesigheid van 'n beheerde veesiekte onder enige lewendehawe en/of wild op die veilingsterrein nie. BKB sal die reg hê om die veiling te staak en elke koop nietig te verklaar en geen party hoegenaamd sal enige verhaalreg teen BKB hê met betrekking tot die uitoefening van hierdie bevoegtheid van BKB nie.
29. Partye wat enige permitte, verwyderingsertifikaë, dokumente van identifikasie of enige ander statutêr voorgeskrewe dokument benodig, is self aanspreeklik vir die verkryging daarvan. Enige opdragte aan die Afslaer met betrekking tot die laai, en/of vervoer en/of keuse van vervoerkontraëurs en/of versekering en/of keuse van versekeraars en/of versorging van die lewendehawe en/of wild of goedere voor of na afloop van die veiling, word uitgevoer op die algehele risiko van die Koper of Verkoper, na gelang van die geval en die Afslaer sal nie aanspreeklik gehou word vir enige verlies of skade van enige aard hoegenaamd, hetsy direkte, indirekte, gevolgskaë of andersins, wat gely mag word as gevolg van enige opdragte van 'n Verkoper of Koper uitgevoer deur die Afslaer. Die Afslaer aanvaar egter verantwoordelikheid soos bedoel in Art 65(2) van die Verbruikers Beskermings Wet terwyl die goedere of lewendehawe en/of wild onder beheer van die Afslaer is. Enige ooreenkoms wat die Afslaer met die vervoerondernemer of versekeraar mag aangaan, word deur die Afslaer aangegaan as die verteenwoordiger van die Koper of die Verkoper, na gelang van die geval. Alle vervoerkoste en versekeringspremies is vooraf betaalbaar aan die Afslaer in kontant tensy reëlings tot die bevrediging van die Afslaer hieroor getref is.
30. Die Koper en die Verkoper stem toe tot die jurisdiksie van die Landdroshof soos beoog in Artikel 45 van Wet Nr 32 van 1944 ten opsigte van enige aksie wat die Afslaer teen die Koper of Verkoper mag instel, ondanks dat die aangeleentheid, eisooorsaak, bedrag of waarde die regspraak van daardie Hof mag oorskry, wat kragtens Artikel 28 van die voornoemde Wet jurisdiksie ten aansien van die Koper of Verkoper het. Nieteenstaande die voorafgaande, sal die Afslaer in sy uitsluitlike en absolute diskresie die reg hê om 'n regsgeë in enige Hooggeregshof van bevoegde jurisdiksie in te stel.
31. Enige regskoste wat deur BKB aangegaan word as gevolg van enige nie-nakoming van die Koper of Verkoper se verpligtinge hierkragtigens, insluitende invorderingskommissie, sal deur BKB verhaal word van die Koper of Verkoper, nagelang van die geval, op die skaal soos tussen prokureur en eie kliënt.
32. Geen wysiging, verandering of novasie van of byvoëing tot hierdie voorwaardes en geen afstanddoening deur BKB van enige van sy regte hierkragtigens sal enigsins van krag wees tensy dit op skrif gestel is en onderteken is deur BKB nie.
33. Geen toëgewing of vergunning wat deur die Afslaer aan die Koper of Verkoper toegestaan word sal geag word om 'n afstanddoening te wees van enige van die Afslaer se regte hierkragtigens nie en sodanige toëgewing of vergunning sal nie geag word of vertolk word as 'n novasie hiervan nie.
34. Indien enige bepaling hiervan onwettig is of retrospektief onwettig gemaak word, sal daardie onwettige bepaling geag word as deelbaar van die res van die bepalings hiervan en *pro non scripto*.

**RULES OF AUCTION,
TERMS AND CONDITIONS**

1. This auction will be held under the control of BKB Limited/ BKB van Wyk (Pty) Limited/ BKB Louw (Pty) Limited (hereinafter referred to as "the Auctioneer") with business premises situated at: 15 Church street Cradock.
2. The Auctioneer is hereby appointed by the Purchaser and Seller to act for and on behalf of the Purchaser and Seller as agent in accordance with Section 54 of the Value-Added Tax Act, 1991, in respect of all tax invoices, credit and/or debit notes in respect of all livestock, game and/or goods offered at the auction or any costs of transport and insurances premiums paid for on behalf of the Purchaser and Seller.
3. The rules of this auction shall comply with the provisions of Section 45 and all relevant regulations to the Consumer Protection Act 68 of 2008.
4. For greater clarity Section 45(1-4) states as follows:
 - 4.1 In this section, "auction" includes a sale in execution of or pursuant to a court order, to the extent that the order contemplates that the sale is to be conducted by an auction.
 - 4.2 When goods are put up for sale by auction, each lot is, unless there is evidence to the contrary, regarded to be the subject of a separate transaction.
 - 4.3 A sale by auction is complete when the auctioneer announces its completion by the fall of the hammer, or in any other customary manner, and until that announcement is made, a bid may be retracted.
 - 4.4 Notice must be given in advance that a lot or sale by auction is subject to:
 - 4.4.1A reserved or upset price; or
 - 4.4.2A right to bid by or on behalf of the owner or auctioneer, in which case the owner or auctioneer, or any one person on behalf of the owner or auctioneer, as the case may be, may bid at the auction.
5. Until the fall of the hammer as contemplated in Section 45(3) of the Act, any bid may be retracted or declined by the Auctioneer if not compliant with the regulations of the Consumer Protection Act.
6. The auction is not an absolute auction but subject to reserved prices settled by the sellers and as pointed out by the Auctioneer prior to the sale of the set asset or lot.
7. The auction shall take place at the date and time as advertised or publicised and will not be postponed or delayed to enable any member or group of the public to partake in the auction.
8. Should the Auctioneer become aware of any fault on advertising material or any other publication or amendment to these Rules of Auction, the Auctioneer will prior to the auction point out and when necessary amend such mistakes in the advertisement or publication.
9. Any person attending the auction to enter a bid, must prior to the auction register as a buyer on the bidders' roll and comply with the conditions as set out in Chapter 1 of FICA 2001. The purchaser shall sign the bidders' roll/card.
10. Any person who attends the auction to enter a bid on behalf of another person must be duly authorised thereto by means of a written letter of authority from its principal and such a person together with his principal must both register prior to the auction on the bidders' roll and provide all necessary information as required in Chapter 1 of the regulations issued in terms of FICA 2001 with regard to proof of its identity. The bidders' roll/card must be signed by such a person and on behalf of its principal.
11. Where the principal is a company the letters of authority shall appear on the letterhead of the company together with a certified copy of a resolution authorizing the person to bid on behalf of the company. (For purposes of this rule any reference to a company will include any reference to juristic person including partnerships, trusts or incorporated entities).
12. All purchasers have a right of inspection of all goods put up for sale and the auctioneer shall provide reasonable time and access prior to the start of the auction for such an inspection.
13. All livestock, game and goods are sold "voetstoots" and the purchasers do not enjoy the protection of Section 55 and 56 of the Consumer Protection Act.
14. Any information provided regarding the quality, breeding, age, date of insemination, condition, reproductive status or any information regarding health, production or mass or any other aspect of the livestock and/or game, is provided by the seller and any misrepresentation by the seller is without the cooperation or knowledge of the Auctioneer. Any right of recourse as a result of such misrepresentation shall be against the seller.
15. Any bid made does not include VAT which, where applicable, will be added to the bidding price for which a VAT invoice will be issued.
16. All sales are for cash and purchase price is payable immediately to the Auctioneer on acceptance of the bid unless otherwise arranged prior to the auction with the Auctioneer. Any payment made in cash is further subject to cash or any other handling fees. Should the Purchaser however fail to make payment within 7 days from date of delivery, BKB will be entitled to add interest calculated at the current bank prime rate plus 5% to the capital amount outstanding. The interest will be calculated monthly and capitalised.
17. Should the purchaser not pay the purchase price immediately and has failed to make arrangements for payment with the Auctioneer, then the Auctioneer can/will cancel the sale and treat the assets or lots as unsold lots which may again be presented on the auction for sale or be sold out of hand by means of liaison services, depending on the seller's mandate to the auctioneer.
18. Ownership in the lot or assets will remain that of the seller until the purchase price has been paid in full to the seller with the provision that the risk in the assets or lot passes to the purchaser at the fall of the hammer as set out in clause 23.
19. In the event that Purchaser has made necessary finance arrangements with BKB, the Purchaser hereby authorises BKB to pay the purchase price or costs of transport, insurance and any other agreed cost, minus BKB's commissions, on behalf of the Purchaser to the Seller and other service providers, in which event the said payment by BKB on behalf of the Purchaser will be deemed to be monies lent and advanced, the terms and conditions thereof being agreed with the Purchaser in a separate credit agreement or sale agreement. All payments made by BKB to the Seller on behalf of the Purchaser in terms of this clause will be made after the lapse of 5 (Five) working days from date of delivery of the asset to the Purchaser. Any payment made by BKB to the Seller prior to the lapse of the 5 (Five) working day period is made at the sole discretion of BKB and not an enforceable indulgence.
20. For as long as any amount is owing to BKB by the Purchaser, the Purchaser may not, where the assets are the subject of security of the Purchaser's credit facility with BKB, relinquish possession of the said asset, nor may he cede the asset or any of its rights and obligations in terms of this agreement to a third party or otherwise encumber, sell or dispose of the said asset or allow it to become the subject of any right of retention, hypothec, pledge or any encumbrance, whatever the cause thereof may be. BKB may be entitled to cede its rights and obligations without affecting its rights of recourse for any monies still due to it.
21. In the event of the Seller already being indebted to BKB or any of its affiliates at the time of this auction, the Seller hereby irrevocably authorises BKB to set off the purchase price due to the Seller by BKB (minus BKB's commission) against the amounts due by the Seller to BKB.
22. Where BKB, in terms of a credit agreement, lent and advanced monies to the Purchaser for payment of the purchase price of any asset or payment of any transport costs or insurance premiums, no defence of whatsoever nature which the Purchaser may raise against the Seller or the transport contractor or the insurance company may be raised against BKB and the Purchaser shall still be obligated to pay all amounts owing, together with further interest and costs thereon raised in terms of the credit agreement or sale agreement, to be BKB. The conditions of this clause do not interfere with the rights, entitlements or remedies the Purchaser may have against the Seller, transport contractor or insurance company.
23. Neither the Purchaser, nor the Seller, shall be entitled to apply set-off or to retain any monies owing arising from any claim they may have against each other or BKB with regards to any amount owing in terms hereof.
24. Each lot shall immediately after the fall of the hammer deemed to be delivered to the purchaser at which time the risk will pass to the purchaser who will at his own risk and cost remove the lots or assets from the auction terrain. Removal of any assets or lots however will not be allowed by the Auctioneer until payment of the purchase price by the purchaser or acceptable arrangements for payment thereof have been made by the purchaser with the Auctioneer.
25. The Auctioneer will only be obliged to give reasons of the auction if such reasons are other than the voluntary sale of goods by its owners.
26. The bidders' roll and vendor roll will be available for registered buyers for inspection with written notice and good reason during the normal office hours at the business premises of the Auctioneer.
27. The rules of auction will only be read out at the auction if they were not available to the public at the place of business of the Auctioneer. In the event of livestock and game auctions, the rules of auction remain unchanged and are in general available at the business premises of the Auctioneer or on the website of the Auctioneer.
28. Under no circumstances will BKB be held liable for any loss or damage of any cause whatsoever albeit direct or indirect damages suffered by anyone if the livestock and/or game at the auction premises have to be placed under quarantine as a result of the presence of a livestock and/or game disease present. In such event BKB will have the right to cancel the auction as well as any already complete sales and no party will be entitled or have a right of recourse against BKB.
29. Any party requiring permits, removal certificate, documentation of identification or any other statutory prescribed document will solely be responsible for obtaining same. Any instructions to an auctioneer with regards to the loading, transporting, choice of transport contractors, insurance or choice of insurers will be executed at the sole risk of the person acquiring such services and the Auctioneer will not be held responsible for any losses whether direct or indirect which may be suffered as a result of giving effect to the instructions by the Auctioneer. The Auctioneer however does accept responsibility as contemplated in Section 35(2) of the Consumer Protection Act whilst the goods or lots are under control of the auctioneer. Any agreement entered into by the Auctioneer with a transport company or insurer is done so in its representative capacity of the seller or buyer. All transport costs or insurance premiums are therefore payable to the Auctioneer in cash except if acceptable alternative arrangements were made with the Auctioneer.
30. Both the seller and the buyer consent to the jurisdiction of the Magistrate's Court as contemplated in Section 45 of Act 32 of 1944 having regard to any action which the Auctioneer may institute against the buyer or seller irrespective of the cause of action. Notwithstanding the aforesaid the Auctioneer will have the sole and absolute discretion to institute action in any High Court with appropriate jurisdiction.
31. Any legal costs that BKB may have or will incur as a result of the non-compliance of the Purchaser and/or Seller in terms of its or their obligations herein, shall be recoverable by BKB, together with collection commissions from the Purchaser and/or Seller on a scale as between attorney and own client.
32. No variation, amendment, novation or addition to these terms and conditions will have the effect of BKB renouncing any of its rights in terms hereof, unless it is reduced to writing and signed by BKB.
33. No relaxation or indulgence by the Auctioneer must be interpreted as a waiver of any of the Auctioneer's rights in terms hereof. Such relaxation or indulgence must also not be interpreted as a novation hereof.
34. Should any condition be unlawful or become retrospectively unlawful, that unlawful condition shall be deemed to be amended to the extent and in the manner as is necessary to make it lawful or should such amendment be impossible, the unlawful conditions shall be deemed devisable from the remainder of the conditions and *pro non scripto*.



JOIN OUR WHATSAPP CHANNEL TODAY!

Stay connected!

Join the BKB South Livestock & Auctioneering WhatsApp Channel for the latest auction updates, livestock news & market insights – all in one place.

Receive INSTANT updates on:

- Livestock Events
- Upcoming Auctions
- Catalogues
- Auctions Results

You will be the first to know.....

Scan to follow



BKB
LIVESTOCK &
AUCTIONEERING

SERVICE EXCELLENCE

At BKB we value the importance of trust. Trusting that the rains will return and that the land will produce for those who nurture it. Knowing that trust cannot be bought, but rather earned over time through our actions and our commitment to you, through the good times and bad. We take pride in the relationships we have built with generations of clients, each underpinned by integrity and bound through a look in the eye and the shake of a hand.

WWW.BKB.CO.ZA

BKB

The Trusted Home of Agriculture
Die Betroubare Tuiste van Landbou



To scan, download
a free QR Code app

#SustainabilitySynergised

PEOPLE | PLANET | PROFIT

SERVICE EXCELLENCE | ENTREPRENEURSHIP | EARNINGS | EMPLOYEES | ENVIRONMENT

#IntegrityIntegrated