

Ons diere praat
vir hulself!



Bloekombos venue

7 Feb 2026
Kroonstad

*Johanni
Dormers*

25 RAMME
25 SP OOIE
70 KOMM. OOIE



KAREL DU PLESSIS
082 826 3244





heet u welkom by

Johanri Dormers Produksieveiling

07 Februarie 2026

te

Bloemkombos Venue, Kroonstad

GENIET DIE DAG SAAM MET ONS!

ANIMAL, OWNER AND PEDIGREE INFORMATION

LOT 1 (F)

SUPER-SHEEP BREEDER
Pretoria, Gauteng
082 123 4680
lambchops@gmail.com

ABC 220001

Herd Book	SP
Birth date	2022-06-15
Age	1.3 jaar
Inbreeding	6.63%
Birth Stat.	3
AFL	12.4m
ILP	-
EPI	100
Lambled	1
Lambs	2
Weaned	0

ABC 190216 (2)

ABC 170012 (3)

ABC 160020

ABC 140197

ABC 110036

ABC 120001

ABC 130164

ABC 130073

ABC 130102

ABC 130064

ABC 140018

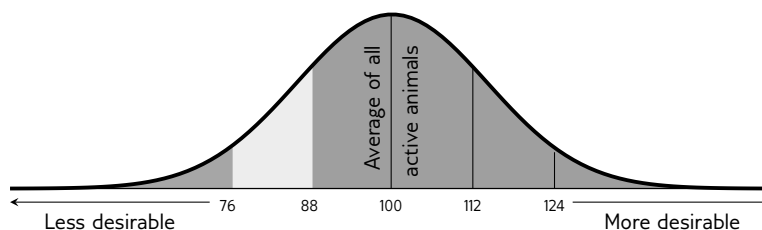
1. Lot Number & sex (mixed lots)
2. GT - animal is genomically tested
3. Animal's identification number
4. Animal's photo (or owner's logo)
5. Breed's logo
6. Animal's information
 - Herd book section
 - Birth date
 - Animal's age
 - Animal's inbreeding percentage
 - Birth status
7. Parentage Verification - a green tick (✓) indicates that the sire and/or dam has been verified via microsatellite (DNA) and/or Genomic testing
8. Owner's logo
9. QR code that links to animal's information on SASmallStock.co.za
10. Additional information (Ewes)
 - Age at first lambing, Interlambing Period, and Ewe Production Index
 - Number of times lambled, lambs born and lambs weaned
11. Additional information (Rams)
 - Number of progeny in the herd, total progeny and number of herds used
12. Owner's most recent Elite Award
13. Owner's information
14. Dam-line information
 - Age at First Lambing, Interlambing Period, and Ewe Production Index
 - Number of times lambled, lambs born and lambs weaned
15. Four (4) generation pedigree

EXPLANATION OF BREEDING VALUES AND SELECTION VALUES FORDORMER

Traits	Description/Measurement	Goal	General Guidelines					
			76	88	100	112	124	
Indices	1 Logix Merit Index	Total Merit Index	Balanced, profitable animals	Loss				Profit
	2 Growth Index	Direct and maternal growth potential	Adequate growth	Light			*	Heavy
	3 Reproduction Index	Overall ewe fertility	Fertile ewes	Poor				Good
Growth	6 Weaning Weight Direct	Wean weight (lamb's ability)	Heavy weaner lambs	Light				Heavy
	7 Weaning Weight Maternal	Wean weight (ewe's ability)	Good mothering ability	Poor			*	Good
	8 Post-Wean Direct	Post-wean weight (lamb's ability)	Adequate post-wean growth	Light			*	Heavy
Fertility	9 Number of Lambs Weaned	Multiples at birth and good survival	Large number of lambs weaned	Few				Many
	10 Total Weight Weaned	Good survival and heavy weights	Heavy lambs weaned	Light				Heavy
	11 Age at First Lambing	Early sexual maturity	Fertile young ewes	Late				Early
	12 Interlambing Period	Early pregnancy in season	Fertile ewes	Long				Short

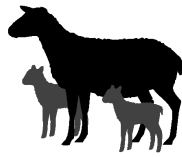
* Determined by own selection goal

INTERPRETATION OF BREEDING VALUE INDICES



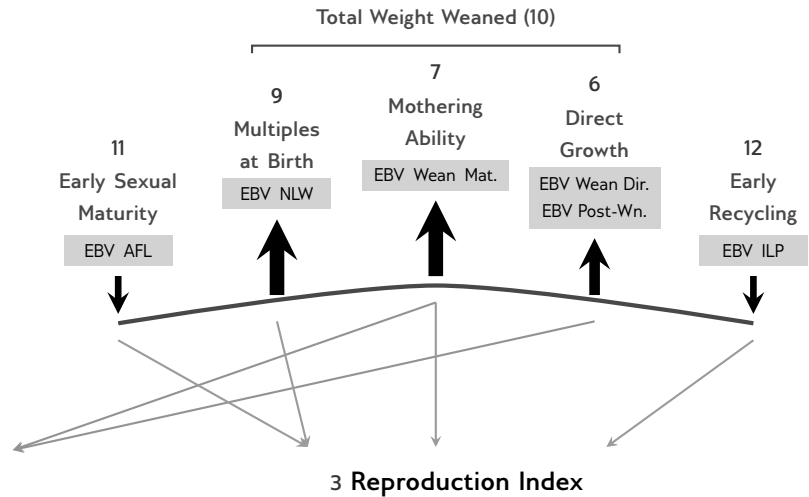
Average between 88 and 112
(Acceptable between 76 and 124)

SELECTION INDICES FOR DORMER



1 L♀ GIX Merit Index

A total merit index for the breed for selection of balanced, profitable animals in both growth and reproduction.



2 Growth Index

Selection for:

- Fast growth potential
- Good maternal ability
- Heavy lambs at weaning
- Early market-readiness

3 Reproduction Index

Selection for:

- Early sexual maturity
- Regular pregnancies
- Multiples at birth
- Good mothering ability
- Heavy lambs at weaning

GENETIC VALUES - BUILDING BLOCKS

Growth			Reproduction			
Wn. Dir.	Wean Mat.	Post-Wn.	NLW	TWW	AFL	ILP
108	99	102	115	102	134	110
64%	45%	51%	52%	45%	36%	40%
6	7	8	9	10	11	12

The Logix Selection Indices are compiled of specific genetic building blocks, as indicated in the selection index descriptions above. These genetic building blocks are indicated in the catalogue by their Breeding Value indices and accuracies.

PHENOTYPIC VALUES

Birth Weight	Wean Weight	Post-Wean Weight	Mature Weight
4kg	20.5kg (80)	55.4kg (100)	88.5kg

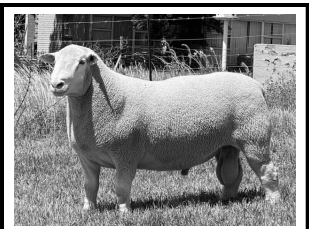
Weights and phenotypic index as obtained within the animal's contemporary group

GROWTH TEST RESULTS

ADG Index	FCR Index	Scrotal Circumference
113	101	37mm

ADG en FCR index, and scrotal circumference, in mm, as measured during and at the end of the growth test

LOT 1 (M)



dormer



J.A. BARNARD



Lindley, Free State
barnardj226@gmail.com

JB 240027

JOHANRI RAM JB240027

Herd Book	SP
Birth date	2024-07-12
Age	1.6 years
Inbreeding	5.16%
Birth Stat.	2
Progeny	None

♂ **JB 210188 (2)**
JOHANRI RAM JB210188 STORM

Parentage Sire Dam
DNA
Genomic

♂ **JB 210130 (2)**
JOHANRI EWE JB210130
AFL 23.9 | ILP 372 | EPI 105
Lambled 3 | Lambs 5 | Weaned 5

♂ **JB 200092**
JOHANRI ANKER

BR 130209
BENDRI OOI BR130209
AFL 23.1 | ILP 435 | EPI 165
Lambled 6 | Lambs 12 | Weaned 10

JB 180050
JOHANRI RAM JB180050

W 150186
WESTLEY OOI W 150186
AFL 16.4 | ILP 343 | EPI 136
Lambled 8 | Lambs 16 | Weaned 15

♂ **JOHANRI KETTING**
JOHANRI EWE JB180015
AFL 23.3 | ILP - | EPI 92
Lambled 1 | Lambs 3 | Weaned 3

RHENOSTERBOSRUG RAM AP 100097
KINKO OOI JS 080578
AFL 25.6 | ILP 367 | EPI 103
Lambled 4 | Lambs 6 | Weaned 5

♂ **JOHANRI RAM JB160040**
JOHANRI OOI JB 100034
AFL - | ILP - | EPI 227
Lambled 19 | Lambs 20 | Weaned 18

TOP 3 GOLIAT
ECTA OOI TA130066
AFL 25 | ILP - | EPI 91
Lambled 1 | Lambs 2 | Weaned 2

LOGIX
GENETICS CENTRE
EBV Analysis 2026-01-21

SELLER REMARKS: Potensiële kuddevaar

Growth			Reproduction			
Wn. Dir.	Wean Mat.	Post-Wn.	NLW	TWW	AFL	ILP
108	81	98	90	90	97	92
63%	53%	43%	37%	53%	37%	24%

Logix Merit Index	96	Birth Wt.	4kg
Growth Index	102	Wean Wt.	50.1kg (92)
Reproduction Index	84	Post-Wean	-
		Mature Wt.	-
		ADG Ind.	-
		FCR Ind.	-
		Scrotum	-

LOT 2 (M)



dormer



J.A. BARNARD



Lindley, Free State
barnardj226@gmail.com

JB 240109

JOHANRI RAM JB240109

Herd Book	SP
Birth date	2024-07-18
Age	1.6 years
Inbreeding	14.12%
Birth Stat.	2
Progeny	None

♂ **JB 210188 (2)**
JOHANRI RAM JB210188 STORM

Parentage Sire Dam
DNA
Genomic

JB 220032 (1)
JOHANRI EWE JB220032
AFL 24 | ILP - | EPI 96
Lambled 1 | Lambs 2 | Weaned 2

♂ **JB 200092**
JOHANRI ANKER

BR 130209
BENDRI OOI BR130209
AFL 23.1 | ILP 435 | EPI 165
Lambled 6 | Lambs 12 | Weaned 10

♂ **JB 200073**
JOHANRI RAM JB200073

JB 200023
JOHANRI EWE JB200023
AFL 24.3 | ILP 382 | EPI 93
Lambled 2 | Lambs 3 | Weaned 3

♂ **JOHANRI KETTING**
JOHANRI EWE JB180015
AFL 23.3 | ILP - | EPI 92
Lambled 1 | Lambs 3 | Weaned 3

RHENOSTERBOSRUG RAM AP 100097
KINKO OOI JS 080578
AFL 25.6 | ILP 367 | EPI 103
Lambled 4 | Lambs 6 | Weaned 5

♂ **JOHANRI KETTING**
JOHANRI EWE JB180018
AFL 23.2 | ILP 368 | EPI 101
Lambled 6 | Lambs 11 | Weaned 9

♂ **JOHANRI KETTING**
JOHANRI EWE JB180070
AFL 21.9 | ILP 357 | EPI 92
Lambled 2 | Lambs 5 | Weaned 5

LOGIX
GENETICS CENTRE
EBV Analysis 2026-01-21

SELLER REMARKS: Potensiële kuddevaar

Growth			Reproduction			
Wn. Dir.	Wean Mat.	Post-Wn.	NLW	TWW	AFL	ILP
119	80	110	89	95	75	81
62%	50%	43%	35%	51%	38%	24%

Logix Merit Index	98	Birth Wt.	4kg
Growth Index	111	Wean Wt.	61.6kg (113)
Reproduction Index	78	Post-Wean	-
		Mature Wt.	-
		ADG Ind.	-
		FCR Ind.	-
		Scrotum	-

LOT 3 (M)



dormer



M. KLOPPER

Hertzogville, Free State
0836270846
marco@hrklopper.co.za

MK 240008

JAKKALSDANS RAM MK240008

Herd Book	SP
Birth date	2024-07-29
Age	1.5 years
Inbreeding	%
Birth Stat.	2
Progeny	None

JB 220145 (2)
JOHANRI RAM JB220145

Parentage Sire Dam
DNA
Genomic

MK 210007 (3)
JAKKALSDANS EWE MK210007
AFL 12.8 | ILP 346 | EPI 98
Lambled 4 | Lambs 7 | Weaned 3

♂ **JB 200072**
JOHANRI RAM JB200072

JB 200005
JOHANRI EWE JB200005
AFL 24.7 | ILP 363 | EPI 136
Lambled 4 | Lambs 11 | Weaned 11

DZ 140020
DROERIVIER RAM DZ 140020

JOR 170162
J.O.R OOI JOR 170162
AFL 24.6 | ILP 364 | EPI 126
Lambled 7 | Lambs 11 | Weaned 8

JOHANRI RAM JB180064
JOHANRI EWE JB180078
AFL 22.2 | ILP 365 | EPI 90
Lambled 4 | Lambs 5 | Weaned 5

♂ **JOHANRI KETTING**
JOHANRI EWE JB180134
AFL 21.7 | ILP 370 | EPI 119
Lambled 6 | Lambs 15 | Weaned 11

JOHANRI RAM JB 110054
DROERIVIER OOI DZ 100001
AFL 16.5 | ILP 290 | EPI 171
Lambled 9 | Lambs 18 | Weaned 17

J.O.R RAM JOR 160094
J.O.R OOI JOR 140137
AFL 23.1 | ILP 361 | EPI 103
Lambled 5 | Lambs 9 | Weaned 6

LOGIX
GENETICS CENTRE
EBV Analysis 2026-01-21

SELLER REMARKS: Baie goed gebalanseerde ram met 'n bree bors en sterk kop. Goeie bloedlyne. Potensiele kuddevaar.

Growth			Reproduction			
Wn. Dir.	Wean Mat.	Post-Wn.	NLW	TWW	AFL	ILP
105	93	103	89	92	77	91
57%	45%	35%	36%	48%	34%	29%

Logix Merit Index	93	Birth Wt.	4.9kg
Growth Index	104	Wean Wt.	45.7kg (106)
Reproduction Index	84	Post-Wean	-
		Mature Wt.	-
		ADG Ind.	-
		FCR Ind.	-
		Scrotum	-

LOT 4 (M)



M. KLOPPER
Hertzogville, Free State
0836270846
marco@hrklopper.co.za



MK 240043
JAKKALSDANS RAM MK240043

Kuddeboek	SP
Geb. dtm	2024-08-12
Oud.	1.5 jaar
Inteling	17.97%
Geb. Status	4
Nageslag	
Geen	

JB 220145 (2)
JOHANRI RAM JB220145

Ouerskap Vaar Moer
DNS
Genomies

JB 200008 (2)
JOHANRI EWE JB200008
OEL 27.5 | ILP 344 | OPI 105
Gelam 4 | Lammers 9 | Gespeen 7

JB 200072
JOHANRI RAM JB200072

JB 200005
JOHANRI EWE JB200005
OEL 24.7 | ILP 363 | OPI 136
Gelam 4 | Lammers 11 | Gespeen 11

JB 180064
JOHANRI RAM JB180064

JB 180037
JOHANRI EWE JB180037
OEL 22 | ILP 489 | OPI 98
Gelam 4 | Lammers 8 | Gespeen 8

JOHANRI RAM JB180064
JOHANRI EWE JB180078
OEL 22.2 | ILP 365 | OPI 90
Gelam 4 | Lammers 5 | Gespeen 5

JOHANRI KETTING
JOHANRI EWE JB180134
OEL 21.7 | ILP 370 | OPI 119
Gelam 6 | Lammers 15 | Gespeen 11

JOHANRI APOLLO
JOHANRI OOI JB 130071
OEL - | ILP - | OPI 135
Gelam 16 | Lammers 13 | Gespeen 12

JOHANRI RAM JB160174
JOHANRI OOI JB 130067
OEL - | ILP - | OPI 132
Gelam 16 | Lammers 11 | Gespeen 11



Groeï			Reproduksie			
Spn. Dir.	Spn. Mat.	Na-Spn.	GLS	TWW	OEL	ILP
99	84	97	97	91	81	81
59%	46%	33%	34%	48%	31%	26%

Logix Meriete Indeks	89
Groeï Indeks	94
Reproduksie Indeks	85

Geb. Gew.	3.7kg
Speen Gew.	40.1kg (93)
Na-Speen	-
Volw. Gew.	-
GDT Ind.	-
VOV Ind.	-
Skrotum	-

VERKOPER OPMERKINGS: Klip harde ram. Deel van 'n vierling.

LOT 5 (M)



J.A. BARNARD
Lindley, Free State
barnardj226@gmail.com



JB 240059
JOHANRI RAM JB240059

Kuddeboek	SP
Geb. dtm	2024-07-14
Oud.	1.6 jaar
Inteling	6.04%
Geb. Status	2
Nageslag	
Geen	

JB 210188 (2)
JOHANRI RAM JB210188 STORM

Ouerskap Vaar Moer
DNS
Genomies

JB 200129 (2)
JOHANRI EWE JB200129
OEL 23.4 | ILP 367 | OPI 122
Gelam 4 | Lammers 8 | Gespeen 8

JB 200092
JOHANRI ANKER

BR 130209
BENDRI OOI BR130209
OEL 23.1 | ILP 435 | OPI 165
Gelam 6 | Lammers 12 | Gespeen 10

JB 180064
JOHANRI RAM JB180064

JB 170015
JOHANRI EWE JB170015
OEL 16.6 | ILP 340 | OPI 108
Gelam 6 | Lammers 9 | Gespeen 8

JOHANRI KETTING
JOHANRI EWE JB180015
OEL 23.3 | ILP - | OPI 92
Gelam 1 | Lammers 3 | Gespeen 3

RHENOSTERBOSRUG RAM AP 100097
KINKO OOI JS 080578
OEL 25.6 | ILP 367 | OPI 103
Gelam 4 | Lammers 6 | Gespeen 5

JOHANRI APOLLO
JOHANRI OOI JB 130071
OEL - | ILP - | OPI 135
Gelam 16 | Lammers 13 | Gespeen 12

LEEUEWKOP RAM J150133
JOHANRI OOI JB 140094
OEL - | ILP - | OPI 84
Gelam 18 | Lammers 6 | Gespeen 5



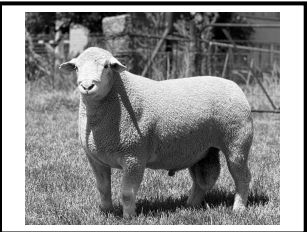
Groeï			Reproduksie			
Spn. Dir.	Spn. Mat.	Na-Spn.	GLS	TWW	OEL	ILP
110	85	100	94	96	100	88
64%	55%	43%	39%	55%	39%	26%

Logix Meriete Indeks	101
Groeï Indeks	106
Reproduksie Indeks	91

Geb. Gew.	4kg
Speen Gew.	57.4kg (105)
Na-Speen	-
Volw. Gew.	-
GDT Ind.	-
VOV Ind.	-
Skrotum	-

VERKOPER OPMERKINGS:

LOT 6 (M)



J.A. BARNARD
Lindley, Free State
barnardj226@gmail.com



JB 240064
JOHANRI RAM JB240064

Kuddeboek	SP
Geb. dtm	2024-07-14
Oud.	1.6 jaar
Inteling	11.73%
Geb. Status	3
Nageslag	
Geen	

JB 220041 (2)
JOHANRI RAM JB220041

Ouerskap Vaar Moer
DNS
Genomies

JB 210124 (3)
JOHANRI EWE JB210124
OEL 24.5 | ILP 357 | OPI 111
Gelam 3 | Lammers 6 | Gespeen 6

JB 200072
JOHANRI RAM JB200072

JB 180053
JOHANRI EWE JB180053
OEL 22.4 | ILP 365 | OPI 116
Gelam 6 | Lammers 10 | Gespeen 10

JB 190014
JOHANRI RAM JB190014

JB 170168
JOHANRI EWE JB170168
OEL 21.8 | ILP 383 | OPI 100
Gelam 5 | Lammers 9 | Gespeen 9

JOHANRI RAM JB180064
JOHANRI EWE JB180078
OEL 22.2 | ILP 365 | OPI 90
Gelam 4 | Lammers 5 | Gespeen 5

JOHANRI BARNARD
JOHANRI OOI JB 120160
OEL - | ILP - | OPI 161
Gelam 11 | Lammers 16 | Gespeen 15

JOHANRI RAM JB180008
JOHANRI EWE JB180168
OEL 21.8 | ILP 383 | OPI 100
Gelam 5 | Lammers 9 | Gespeen 9

WELPIC RAM JP150028
JOHANRI OOI JB 130071
OEL - | ILP - | OPI 135
Gelam 16 | Lammers 13 | Gespeen 12



Groeï			Reproduksie			
Spn. Dir.	Spn. Mat.	Na-Spn.	GLS	TWW	OEL	ILP
104	96	96	85	89	96	93
59%	46%	32%	34%	48%	31%	25%

Logix Meriete Indeks	96
Groeï Indeks	105
Reproduksie Indeks	88

Geb. Gew.	3kg
Speen Gew.	56.6kg (104)
Na-Speen	-
Volw. Gew.	-
GDT Ind.	-
VOV Ind.	-
Skrotum	-

VERKOPER OPMERKINGS:

LOT 7 (M)



J.A. BARNARD



Lindley, Free State
barnardj226@gmail.com

JB 240136

JOHANRI RAM JB240136

Herd Book	SP
Birth date	2024-07-26
Age	1.5 years
Inbreeding	19.17%
Birth Stat.	2
Progeny	None

♂ **JB 210188 (2)**
JOHANRI RAM JB210188 STORM

Parentage Sire Dam
DNA
Genomic

JB 220087 (1)
JOHANRI EWE JB220087
AFL 24.1 | ILP 356 | EPI 113
Lambled 2 | Lams 6 | Weaned 6

♂ **JB 200092**
JOHANRI ANKER

BR 130209
BENDRI OOI BR130209
AFL 23.1 | ILP 435 | EPI 165
Lambled 6 | Lams 12 | Weaned 10

♂ **JB 200092**
JOHANRI ANKER

JB 200078
JOHANRI EWE JB200078
AFL 24.2 | ILP 343 | EPI 103
Lambled 4 | Lams 5 | Weaned 5

♂ **JOHANRI KETTING**
JOHANRI EWE JB180015
AFL 23.3 | ILP - | EPI 92
Lambled 11 | Lams 3 | Weaned 3

RHENOSTERBOSRUG RAM AP 100097

KINKO OOI JS 080578
AFL 25.6 | ILP 367 | EPI 103
Lambled 4 | Lams 6 | Weaned 5

♂ **JOHANRI KETTING**
JOHANRI EWE JB180015
AFL 23.3 | ILP - | EPI 92
Lambled 11 | Lams 3 | Weaned 3

JOHANRI RAM JB180064
JOHANRI EWE JB180041
AFL 22.3 | ILP 368 | EPI 89
Lambled 3 | Lams 6 | Weaned 5



EBV Analysis 2026-01-21

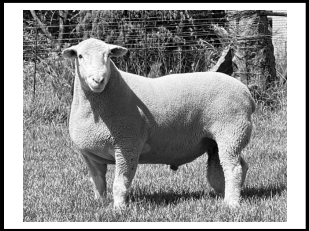
SELLER REMARKS:

Growth			Reproduction			
Wn. Dir.	Wean Mat.	Post-Wn.	NLW	TWW	AFL	ILP
111	73	99	103	98	78	87
63%	53%	44%	36%	53%	38%	24%

Logix Merit Index	97
Growth Index	101
Reproduction Index	84

Birth Wt.	4kg
Wean Wt.	54kg (99)
Post-Wean	-
Mature Wt.	-
ADG Ind.	-
FCR Ind.	-
Scrotum	-

LOT 8 (M)



J.A. BARNARD



Lindley, Free State
barnardj226@gmail.com

JB 240092

JOHANRI RAM JB240092

Herd Book	SP
Birth date	2024-07-17
Age	1.6 years
Inbreeding	13.58%
Birth Stat.	2
Progeny	None

♂ **JB 220041 (2)**
JOHANRI RAM JB220041

Parentage Sire Dam
DNA
Genomic

JB 210093 (3)
JOHANRI EWE JB210093
AFL 25 | ILP 356 | EPI 105
Lambled 3 | Lams 6 | Weaned 5

♂ **JB 200072**
JOHANRI RAM JB200072

JB 180053
JOHANRI EWE JB180053
AFL 22.4 | ILP 365 | EPI 116
Lambled 6 | Lams 10 | Weaned 10

♂ **JB 180116**
JOHANRI KETTING

JB 180030
JOHANRI EWE JB180030
AFL 22.6 | ILP 364 | EPI 108
Lambled 5 | Lams 11 | Weaned 11

JOHANRI RAM JB180064
JOHANRI EWE JB180078
AFL 22.2 | ILP 365 | EPI 90
Lambled 4 | Lams 5 | Weaned 5

JOHANRI BARNARD
JOHANRI OOI JB 120160
AFL - | ILP - | EPI 161
Lambled 11 | Lams 16 | Weaned 15

♂ **REMKUIL RAM JT 160062**
JOHANRI OOI JB 130067
AFL - | ILP - | EPI 132
Lambled 16 | Lams 11 | Weaned 11

JOHANRI RAM JB160174
JOHANRI EWE JB160103
AFL 18.1 | ILP 348 | EPI 135
Lambled 7 | Lams 15 | Weaned 15



EBV Analysis 2026-01-21

SELLER REMARKS:

Growth			Reproduction			
Wn. Dir.	Wean Mat.	Post-Wn.	NLW	TWW	AFL	ILP
109	83	103	85	87	76	88
59%	47%	36%	37%	49%	35%	29%

Logix Merit Index	90
Growth Index	103
Reproduction Index	75

Birth Wt.	4kg
Wean Wt.	51.6kg (95)
Post-Wean	-
Mature Wt.	-
ADG Ind.	-
FCR Ind.	-
Scrotum	-

LOT 9 (M)



J.A. BARNARD



Lindley, Free State
barnardj226@gmail.com

JB 240121

JOHANRI RAM JB240121

Herd Book	SP
Birth date	2024-07-21
Age	1.6 years
Inbreeding	4.8%
Birth Stat.	2
Progeny	None

D 200126 (2)
BES RAM D200126

Parentage Sire Dam
DNA
Genomic

JB 220163 (3)
JOHANRI EWE JB220163
AFL 23.8 | ILP 363 | EPI 111
Lambled 2 | Lams 5 | Weaned 5

JOR 180020
J.O.R RAM JOR 180020

D 130014
BES OOI D 130014
AFL 16.3 | ILP 376 | EPI 301
Lambled 10 | Lams 23 | Weaned 21

♂ **JB 200073**
JOHANRI RAM JB200073

BR 150181
BENDRI OOI BR 150181
AFL 28.3 | ILP 398 | EPI 100
Lambled 5 | Lams 11 | Weaned 10

J.O.R RAM JOR 160035
J.O.R OOI JOR 130277
AFL 20.7 | ILP 329 | EPI 106
Lambled 4 | Lams 4 | Weaned 4

RHENOSTERBOSRUG RAM AP 080018
REMKUIL OOI JT 070376
AFL 28.8 | ILP 473 | EPI 118
Lambled 5 | Lams 7 | Weaned 5

♂ **JOHANRI KETTING**
JOHANRI EWE JB180018
AFL 23.2 | ILP 368 | EPI 101
Lambled 6 | Lams 11 | Weaned 9

KINKO RAM JS 090002
BENDRI OOI BR 130117
AFL 16 | ILP 327 | EPI 104
Lambled 4 | Lams 6 | Weaned 4



EBV Analysis 2026-01-21

SELLER REMARKS:

Growth			Reproduction			
Wn. Dir.	Wean Mat.	Post-Wn.	NLW	TWW	AFL	ILP
105	89	101	91	92	84	109
62%	52%	40%	38%	53%	36%	26%

Logix Merit Index	96
Growth Index	103
Reproduction Index	87

Birth Wt.	4kg
Wean Wt.	55.7kg (102)
Post-Wean	-
Mature Wt.	-
ADG Ind.	-
FCR Ind.	-
Scrotum	-

LOT 10 (M)



J.A. BARNARD

Lindley, Free State
barnardj226@gmail.com

JB 240103

JOHANRI RAM JB240103

Kuddeboek	SP
Geb. dtm	2024-07-17
Oud.	1.6 jaar
Inteling	12.9%
Geb. Status	2
Nageslag	
Geen	

♂ **JB 230132 (2)**
JOHANRI RAM JB230132

Ouerskap Vaar Moer
DNS
Genomies

JB 210088 (3)
JOHANRI EWE JB210088

OEL 24.4 | ILP 367 | OPI 103
Gelam 3 | Lammers 5 | Gespeen 5

♂ **JB 200072**
JOHANRI RAM JB200072

JB 180030
JOHANRI EWE JB180030

OEL 22.6 | ILP 364 | OPI 108
Gelam 5 | Lammers 11 | Gespeen 11

♂ **JB 180116**
JOHANRI KETTING

JB 190034
JOHANRI EWE JB190034

OEL - | ILP - | OPI 108
Gelam 8 | Lammers 9 | Gespeen 9

JOHANRI RAM JB180064

JOHANRI EWE JB180078
OEL 22.2 | ILP 365 | OPI 90
Gelam 4 | Lammers 5 | Gespeen 5

JOHANRI RAM JB160174

JOHANRI EWE JB160103
OEL 18.1 | ILP 348 | OPI 135
Gelam 7 | Lammers 15 | Gespeen 15

♂ **REMKUIL RAM JT 160062**

JOHANRI OOI JB 130067
OEL - | ILP - | OPI 132
Gelam 16 | Lammers 11 | Gespeen 11

JOHANRI RAM JB160174

JOHANRI EWE JB170026
OEL 15.5 | ILP 353 | OPI 89
Gelam 2 | Lammers 4 | Gespeen 4

LOGIX
GENETICS ONLINE
EBV Analyse 2026-01-21

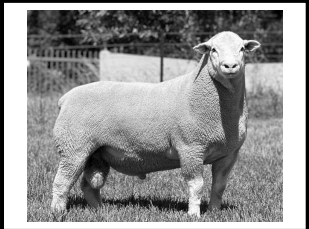
VERKOPER OPMERKINGS:

Groeï			Reproduksie			
Spn. Dir.	Spn. Mat.	Na-Spn.	GLS	TWW	OEL	ILP
117	74	112	88	91	91	82
56%	46%	36%	36%	48%	34%	28%

Logix Meriete Indeks	97
Groeï Indeks	107
Reproduksie Indeks	78

Geb. Gew.	4kg
Speen Gew.	58.1kg (106)
Na-Speen	-
Volw. Gew.	-
GDT Ind.	-
VOV Ind.	-
Skrotum	-

LOT 11 (M)



J.A. BARNARD

Lindley, Free State
barnardj226@gmail.com

JB 240125

JOHANRI RAM JB240125

Kuddeboek	SP
Geb. dtm	2024-07-22
Oud.	1.6 jaar
Inteling	4.22%
Geb. Status	3
Nageslag	
Geen	

D 200126 (2)
BES RAM D200126

Ouerskap Vaar Moer
DNS
Genomies

JB 200085 (2)
JOHANRI EWE JB200085

OEL 24 | ILP 371 | OPI 116
Gelam 4 | Lammers 8 | Gespeen 8

JOR 180020
J.O.R RAM JOR 180020

D 130014
BES OOI D 130014

OEL 16.3 | ILP 376 | OPI 301
Gelam 10 | Lammers 23 | Gespeen 21

JB 180008
JOHANRI RAM JB180008

JB 180040
JOHANRI EWE JB180040

OEL 22.4 | ILP 372 | OPI 107
Gelam 6 | Lammers 10 | Gespeen 10

J.O.R RAM JOR 160035

J.O.R OOI JOR 130277
OEL 20.7 | ILP 329 | OPI 106
Gelam 4 | Lammers 4 | Gespeen 4

RHENOSTERBOSRUG RAM AP 080018

REMKUIL OOI JT 070376
OEL 28.8 | ILP 473 | OPI 118
Gelam 5 | Lammers 7 | Gespeen 5

♂ **REMKUIL RAM JT 160062**

JOHANRI EWE JB170005
OEL 15.6 | ILP 361 | OPI 138
Gelam 6 | Lammers 13 | Gespeen 13

JOHANRI RAM JB160174

JOHANRI OOI JB 100034
OEL - | ILP - | OPI 227
Gelam 19 | Lammers 20 | Gespeen 18

LOGIX
GENETICS ONLINE
EBV Analyse 2026-01-21

VERKOPER OPMERKINGS:

Groeï			Reproduksie			
Spn. Dir.	Spn. Mat.	Na-Spn.	GLS	TWW	OEL	ILP
102	78	97	92	87	85	106
63%	54%	43%	41%	54%	39%	28%

Logix Meriete Indeks	90
Groeï Indeks	95
Reproduksie Indeks	81

Geb. Gew.	3kg
Speen Gew.	49.9kg (91)
Na-Speen	-
Volw. Gew.	-
GDT Ind.	-
VOV Ind.	-
Skrotum	-

LOT 12 (M)



M. KLOPPER

Hertzogville, Free State
0836270846
marco@hrklopper.co.za

MK 240017

JAKKALSDANS RAM MK240017

Kuddeboek	SP
Geb. dtm	2024-07-30
Oud.	1.5 jaar
Inteling	5.98%
Geb. Status	2
Nageslag	
Geen	

JB 220145 (2)
JOHANRI RAM JB220145

Ouerskap Vaar Moer
DNS
Genomies

MK 220021 (2)
JAKKALSDANS EWE MK220021

OEL 12.9 | ILP 312 | OPI 112
Gelam 3 | Lammers 5 | Gespeen 3

♂ **JB 200072**
JOHANRI RAM JB200072

JB 200005
JOHANRI EWE JB200005

OEL 24.7 | ILP 363 | OPI 136
Gelam 4 | Lammers 11 | Gespeen 11

DR 190067
DORMERFIC RAM DR190067

T 200330
2BROERS OOI T 200330

OEL 19.9 | ILP 318 | OPI 112
Gelam 5 | Lammers 10 | Gespeen 7

JOHANRI RAM JB180064

JOHANRI EWE JB180078
OEL 22.2 | ILP 365 | OPI 90
Gelam 4 | Lammers 5 | Gespeen 5

♂ **JOHANRI KETTING**

JOHANRI EWE JB180134
OEL 21.7 | ILP 370 | OPI 119
Gelam 6 | Lammers 15 | Gespeen 11

VANOVIS RAM VR 170184

PHR OOI PHR 160542
OEL 17 | ILP 394 | OPI 179
Gelam 8 | Lammers 11 | Gespeen 11

♂ **2BROERS RAM T190243**

2BROERS OOI T 150135
OEL 24 | ILP 374 | OPI 94
Gelam 4 | Lammers 7 | Gespeen 7

LOGIX
GENETICS ONLINE
EBV Analyse 2026-01-21

VERKOPER OPMERKINGS:

Groeï			Reproduksie			
Spn. Dir.	Spn. Mat.	Na-Spn.	GLS	TWW	OEL	ILP
101	98	101	92	94	94	90
56%	42%	29%	31%	45%	27%	23%

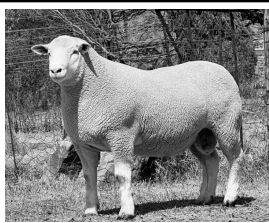
Logix Meriete Indeks	98
Groeï Indeks	104
Reproduksie Indeks	94

Geb. Gew.	4.6kg
Speen Gew.	43.2kg (100)
Na-Speen	-
Volw. Gew.	-
GDT Ind.	-
VOV Ind.	-
Skrotum	-

LOT 13 (M)

JB 230203

JOHANRI RAM JB230203



BERGSIG DORMER STOET

Ladybrand, Free State
0829028657
admin@sdp.edu.za

Herd Book	SP
Birth date	2023-08-04
Age	2.5 years
Inbreeding	8.95%
Birth Stat.	2

Progeny	
In Herd	22
Total	22
Herds Used	1

♂ **JB 210161 (2)**
JOHANRI RAM JB210161

Parentage Sire Dam
DNA
Genomic

JB 180111 (1)
JOHANRI EWE JB180111
AFL 22.3 | ILP 367 | EPI 108
Lambd 6 | Lams 14 | Weaned 9

♂ **JH 180144**
KAIROS RAM JH180144

JB 180018
JOHANRI EWE JB180018
AFL 23.2 | ILP 368 | EPI 101
Lambd 6 | Lams 11 | Weaned 9

♂ **JB 160084**
JOHANRI APOLLO

JB 130071
JOHANRI OOI JB 130071
AFL - | ILP - | EPI 135
Lambd 16 | Lams 13 | Weaned 12

JOHANRI RAM JB150119
KAIROS OOI JH 140098
AFL - | ILP - | EPI 108
Lambd 10 | Lams 7 | Weaned 7

♂ **REMKUIL RAM JT 160062**
JOHANRI EWE JB170027
AFL 15.7 | ILP 353 | EPI 87
Lambd 2 | Lams 4 | Weaned 4

JOHANRI RAM JB 140174
JOHANRI OOI JB 120196
AFL - | ILP - | EPI 127
Lambd 11 | Lams 11 | Weaned 8

JOHANRI RAM JB 110054
JOHANRI OOI JB 100033
AFL 18.4 | ILP 318 | EPI 107
Lambd 5 | Lams 8 | Weaned 8

Growth			Reproduction			
Wn. Dir.	Wean Mat.	Post-Wn.	NLW	TWW	AFL	ILP
102	94	103	94	94	103	94
72%	53%	36%	41%	58%	39%	32%

Logix Merit Index	99
Growth Index	102
Reproduction Index	95

Birth Wt.	4kg
Wean Wt.	70.3kg (136)
Post-Wean	-
Mature Wt.	-
ADG Ind.	-
FCR Ind.	-
Scrotum	-

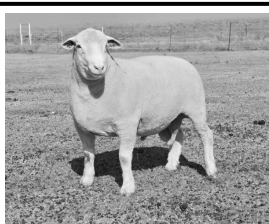
LOGIX
GENETICS
EBV Analysis 2026-01-21

SELLER REMARKS:

LOT 14 (M)

MK 240001

JAKKALSDANS RAM MK240001



M. KLOPPER

Hertzogville, Free State
0836270846
marco@hrklopper.co.za

Herd Book	SP
Birth date	2024-07-28
Age	1.5 years
Inbreeding	5.8%
Birth Stat.	2

Progeny	
None	

JB 220145 (2)
JOHANRI RAM JB220145

Parentage Sire Dam
DNA
Genomic

MK 210001 (3)
JAKKALSDANS EWE MK210001
AFL 12.8 | ILP 348 | EPI 109
Lambd 4 | Lams 7 | Weaned 5

♂ **JB 200072**
JOHANRI RAM JB200072

JB 200005
JOHANRI EWE JB200005
AFL 24.7 | ILP 363 | EPI 136
Lambd 4 | Lams 11 | Weaned 11

DZ 190103
DROERIVIER RAM DZ 190103

JOR 170011
J.O.R OOI JOR 170011
AFL 16.1 | ILP 360 | EPI 179
Lambd 8 | Lams 17 | Weaned 15

JOHANRI RAM JB180064
JOHANRI EWE JB180078
AFL 22.2 | ILP 365 | EPI 90
Lambd 4 | Lams 5 | Weaned 5

♂ **JOHANRI KETTING**
JOHANRI EWE JB180134
AFL 21.7 | ILP 370 | EPI 119
Lambd 6 | Lams 15 | Weaned 11

DROERIVIER RAM DZ 140017
DROERIVIER OOI DZ 150014
AFL 19.9 | ILP 302 | EPI 92
Lambd 4 | Lams 7 | Weaned 7

J.O.R RAM JOR 160035
J.O.R OOI JOR 140056
AFL 24 | ILP 305 | EPI 113
Lambd 5 | Lams 9 | Weaned 8

Growth			Reproduction			
Wn. Dir.	Wean Mat.	Post-Wn.	NLW	TWW	AFL	ILP
104	91	99	104	101	87	96
57%	46%	32%	34%	47%	32%	25%

Logix Merit Index	101
Growth Index	102
Reproduction Index	97

Birth Wt.	3.8kg
Wean Wt.	53kg (123)
Post-Wean	-
Mature Wt.	-
ADG Ind.	-
FCR Ind.	-
Scrotum	-

LOGIX
GENETICS
EBV Analysis 2026-01-21

SELLER REMARKS:

LOT 15 (M)

MK 240023

JAKKALSDANS RAM MK240023



M. KLOPPER

Hertzogville, Free State
0836270846
marco@hrklopper.co.za

Herd Book	SP
Birth date	2024-07-31
Age	1.5 years
Inbreeding	8.04%
Birth Stat.	2

Progeny	
None	

JB 220145 (2)
JOHANRI RAM JB220145

Parentage Sire Dam
DNA
Genomic

DE 170103 (1)
AAN-DE-VALLEI OOI DE 170103
AFL 19.5 | ILP 357 | EPI 226
Lambd 8 | Lams 12 | Weaned 11

♂ **JB 200072**
JOHANRI RAM JB200072

JB 200005
JOHANRI EWE JB200005
AFL 24.7 | ILP 363 | EPI 136
Lambd 4 | Lams 11 | Weaned 11

DZ 140020
DROERIVIER RAM DZ 140020

QJ 140308
BB AGRI EWE QJ140308
AFL - | ILP - | EPI -
Lambd 4 | Lams 3 | Weaned 2

JOHANRI RAM JB180064
JOHANRI EWE JB180078
AFL 22.2 | ILP 365 | EPI 90
Lambd 4 | Lams 5 | Weaned 5

♂ **JOHANRI KETTING**
JOHANRI EWE JB180134
AFL 21.7 | ILP 370 | EPI 119
Lambd 6 | Lams 15 | Weaned 11

JOHANRI RAM JB 110054
DROERIVIER OOI DZ 100001
AFL 16.5 | ILP 290 | EPI 171
Lambd 9 | Lams 18 | Weaned 17

WINTERSHOEK RAM JJ 100019
BB AGRI OOI QJ 110309
AFL - | ILP 343 | EPI 101
Lambd 2 | Lams 4 | Weaned 3

Growth			Reproduction			
Wn. Dir.	Wean Mat.	Post-Wn.	NLW	TWW	AFL	ILP
107	105	101	86	95	73	95
60%	48%	39%	38%	50%	35%	29%

Logix Merit Index	98
Growth Index	112
Reproduction Index	88

Birth Wt.	5.7kg
Wean Wt.	45.2kg (105)
Post-Wean	-
Mature Wt.	-
ADG Ind.	-
FCR Ind.	-
Scrotum	-

LOGIX
GENETICS
EBV Analysis 2026-01-21

SELLER REMARKS:

LOT 16 (M)



M. KLOPPER
Hertzogville, Free State
0836270846
marco@hrklopper.co.za



MK 240056
JAKKALSDANS RAM MK240056

Kuddeboek	SP
Geb. dtm	2024-08-16
Oud.	1.5 jaar
Inteling	18.46%
Geb. Status	2
Nageslag	
Geen	

MK 220024 (3)
JAKKALSDANS RAM MK220024

Ouerskap Vaar Moer
DNS
Genomies

JB 180096 (1)
JOHANRI EWE JB180096
OEL 21.8 | ILP 312 | OPI 105
Gelum 7 | Lammers 13 | Gespeen 9

♂ **JB 200073**
JOHANRI RAM JB200073

JB 200008
JOHANRI EWE JB200008
OEL 27.5 | ILP 344 | OPI 105
Gelum 4 | Lammers 9 | Gespeen 7

♂ **JT 160062**
REMKUIL RAM JT 160062

JB 130067
JOHANRI OOI JB 130067
OEL - | ILP - | OPI 132
Gelum 16 | Lammers 11 | Gespeen 11

♂ **JOHANRI KETTING**
JOHANRI EWE JB180018
OEL 23.2 | ILP 368 | OPI 101
Gelum 6 | Lammers 11 | Gespeen 9

JOHANRI RAM JB180064
JOHANRI EWE JB180037
OEL 22 | ILP 489 | OPI 98
Gelum 4 | Lammers 8 | Gespeen 8

♂ **JABUWY RAM K 130137**
REMKUIL OOI JT 140888
OEL 19.7 | ILP 364 | OPI 97
Gelum 3 | Lammers 4 | Gespeen 4

JOHANRI RAM JB 090007
JOHANRI OOI JB 080115
OEL 20 | ILP 309 | OPI 135
Gelum 7 | Lammers 12 | Gespeen 10



VERKOPER OPMERKINGS:

Groei			Reproduksie			
Spn. Dir.	Spn. Mat.	Na-Spn.	GLS	TWW	OEL	ILP
101	89	109	85	85	83	75
59%	47%	34%	37%	49%	35%	29%

Logix Meriete Indeks	86
Groei Indeks	99
Reproduksie Indeks	78

Geb. Gew.	3.3kg
Speen Gew.	47.2kg (109)
Na-Speen	-
Volw. Gew.	-
GDT Ind.	-
VOV Ind.	-
Skrotum	-

LOT 29 (F)



J.A. BARNARD
Lindley, Free State
barnardj226@gmail.com



JB 240070
JOHANRI EWE JB240070

Kuddeboek	SP		
Geb. dtm	2024-07-15		
Oud.	1.6 jaar		
Inteling	4.61%		
Geb. Status	2		
OEL		ILP	OPI
-		-	-

D 200126 (2)
BES RAM D200126

Ouerskap Vaar Moer
DNS
Genomies

JB 220158 (3)
JOHANRI EWE JB220158
OEL 23.6 | ILP 368 | OPI 113
Gelum 2 | Lammers 6 | Gespeen 6

JOR 180020
J.O.R RAM JOR 180020

D 130014
BES OOI D 130014
OEL 16.3 | ILP 376 | OPI 301
Gelum 10 | Lammers 23 | Gespeen 21

♂ **JB 200072**
JOHANRI RAM JB200072

JB 200044
JOHANRI EWE JB200044
OEL 24.5 | ILP 374 | OPI 106
Gelum 4 | Lammers 6 | Gespeen 6

J.O.R RAM JOR 160035
J.O.R OOI JOR 130277
OEL 20.7 | ILP 329 | OPI 106
Gelum 4 | Lammers 4 | Gespeen 4

RHENOSTERBOSRUG RAM AP 080018
REMKUIL OOI JT 070376
OEL 28.8 | ILP 473 | OPI 118
Gelum 5 | Lammers 7 | Gespeen 5

JOHANRI RAM JB180064
JOHANRI EWE JB180078
OEL 22.2 | ILP 365 | OPI 90
Gelum 4 | Lammers 5 | Gespeen 5

♂ **JOHANRI KETTING**
BENDRI OOI BR 130200
OEL 19.2 | ILP 385 | OPI 173
Gelum 7 | Lammers 11 | Gespeen 10



VERKOPER OPMERKINGS: Dragtig met enkeling by JB 24 0085. 9 plus ooi. Breeders choice

Groei			Reproduksie			
Spn. Dir.	Spn. Mat.	Na-Spn.	GLS	TWW	OEL	ILP
111	76	102	102	99	85	98
62%	53%	43%	39%	53%	38%	26%

Logix Meriete Indeks	101
Groei Indeks	103
Reproduksie Indeks	89

Geb. Gew.	3kg
Speen Gew.	56.7kg (114)
Na-Speen	-
Volw. Gew.	-
GDT Ind.	-
VOV Ind.	-
Skrotum	-

LOT 30 (F)



J.A. BARNARD
Lindley, Free State
barnardj226@gmail.com



JB 240067
JOHANRI EWE JB240067

Kuddeboek	SP		
Geb. dtm	2024-07-15		
Oud.	1.6 jaar		
Inteling	4.42%		
Geb. Status	1		
OEL		ILP	OPI
-		-	-

D 200126 (2)
BES RAM D200126

Ouerskap Vaar Moer
DNS
Genomies

JB 220228 (2)
JOHANRI EWE JB220228
OEL 23.5 | ILP 368 | OPI 101
Gelum 2 | Lammers 3 | Gespeen 3

JOR 180020
J.O.R RAM JOR 180020

D 130014
BES OOI D 130014
OEL 16.3 | ILP 376 | OPI 301
Gelum 10 | Lammers 23 | Gespeen 21

♂ **JB 200073**
JOHANRI RAM JB200073

JB 190043
JOHANRI EWE JB190043
OEL 24.2 | ILP 354 | OPI 95
Gelum 3 | Lammers 5 | Gespeen 5

J.O.R RAM JOR 160035
J.O.R OOI JOR 130277
OEL 20.7 | ILP 329 | OPI 106
Gelum 4 | Lammers 4 | Gespeen 4

RHENOSTERBOSRUG RAM AP 080018
REMKUIL OOI JT 070376
OEL 28.8 | ILP 473 | OPI 118
Gelum 5 | Lammers 7 | Gespeen 5

♂ **JOHANRI KETTING**
JOHANRI EWE JB180018
OEL 23.2 | ILP 368 | OPI 101
Gelum 6 | Lammers 11 | Gespeen 9

JOHANRI RAM JB160174
JOHANRI OOI JB 120160
OEL - | ILP - | OPI 161
Gelum 11 | Lammers 16 | Gespeen 15



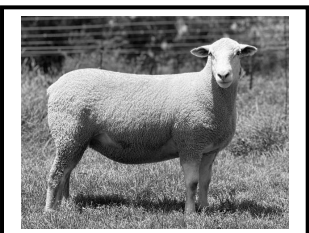
VERKOPER OPMERKINGS: Dragtig met 2-ling by J 24 0009. Uitstaande 9 punt ooi met kapasiteit

Groei			Reproduksie			
Spn. Dir.	Spn. Mat.	Na-Spn.	GLS	TWW	OEL	ILP
108	84	99	82	85	90	101
61%	51%	40%	38%	52%	36%	26%

Logix Meriete Indeks	93
Groei Indeks	104
Reproduksie Indeks	79

Geb. Gew.	4kg
Speen Gew.	51.9kg (104)
Na-Speen	-
Volw. Gew.	-
GDT Ind.	-
VOV Ind.	-
Skrotum	-

LOT 31 (F)



J.A. BARNARD

Lindley, Free State
barnardj226@gmail.com

JB 240118

JOHANRI EWE JB240118

Herd Book	SP	
Birth date	2024-07-19	
Age	1.6 years	
Inbreeding	4.32%	
Birth Stat.	1	
AFL	ILP	EPI
-	-	-

D 200126 (2)	
BES RAM D200126	
Parentage Sire Dam	
DNA	
Genomic	
JB 220001 (1)	
JOHANRI EWE JB220001	
AFL 24.3 ILP 365 EPI 103	
Lambded 2 Lams 3 Weaned 3	

JOR 180020	J.O.R RAM JOR 180020
D 130014	BES OOI D 130014
JB 200092	JOHANRI ANKER
JB 200129	JOHANRI EWE JB200129

J.O.R RAM JOR 160035	J.O.R OOI JOR 130277
RHENOSTERBOSRUG RAM AP 080018	REMKUIL OOI JT 070376
JOHANRI KETTING	JOHANRI EWE JB180015
JOHANRI RAM JB180064	JOHANRI EWE JB170015

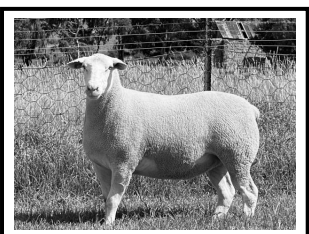
LOGIX
GENETICS CHINA
EBV Analysis 2026-01-21

SELLER REMARKS: Dragtig met enkeling by J 24 0009. Baie vroulike Wolf dogter

Growth			Reproduction			
Wn. Dir.	Wean Mat.	Post-Wn.	NLW	TWW	AFL	ILP
106	96	96	85	91	69	100
62%	51%	41%	38%	52%	37%	26%

Logix Merit Index	93	Birth Wt.	4kg
Growth Index	107	Wean Wt.	51.9kg (104)
Reproduction Index	82	Post-Wean	-
		Mature Wt.	-
		ADG Ind.	-
		FCR Ind.	-
		Scrotum	-

LOT 32 (F)



J.A. BARNARD

Lindley, Free State
barnardj226@gmail.com

JB 240075

JOHANRI EWE JB240075

Herd Book	SP	
Birth date	2024-07-15	
Age	1.6 years	
Inbreeding	4.41%	
Birth Stat.	1	
AFL	ILP	EPI
-	-	-

D 200126 (2)	
BES RAM D200126	
Parentage Sire Dam	
DNA	
Genomic	
JB 220046 (2)	
JOHANRI EWE JB220046	
AFL 23.9 ILP 368 EPI 100	
Lambded 2 Lams 3 Weaned 3	

JOR 180020	J.O.R RAM JOR 180020
D 130014	BES OOI D 130014
JB 200073	JOHANRI RAM JB200073
JB 170168	JOHANRI EWE JB180168

J.O.R RAM JOR 160035	J.O.R OOI JOR 130277
RHENOSTERBOSRUG RAM AP 080018	REMKUIL OOI JT 070376
JOHANRI KETTING	JOHANRI EWE JB180018
WELPIC RAM JP150028	JOHANRI OOI JB 130071

LOGIX
GENETICS CHINA
EBV Analysis 2026-01-21

SELLER REMARKS: Dragtig met enkeling by JB 24 0020. Top, top ooi. Uitstaande bouwvorm

Growth			Reproduction			
Wn. Dir.	Wean Mat.	Post-Wn.	NLW	TWW	AFL	ILP
100	90	94	81	83	81	99
62%	51%	40%	38%	52%	37%	27%

Logix Merit Index	86	Birth Wt.	4kg
Growth Index	99	Wean Wt.	45.6kg (92)
Reproduction Index	77	Post-Wean	-
		Mature Wt.	-
		ADG Ind.	-
		FCR Ind.	-
		Scrotum	-

LOT 33 (F)



J.A. BARNARD

Lindley, Free State
barnardj226@gmail.com

JB 240051

JOHANRI EWE JB240051

Herd Book	SP	
Birth date	2024-07-13	
Age	1.6 years	
Inbreeding	5.95%	
Birth Stat.	3	
AFL	ILP	EPI
-	-	-

JB 230079 (1)	
JOHANRI RAM JB230079	
Parentage Sire Dam	
DNA	
Genomic	
JB 210172 (3)	
JOHANRI EWE JB210172	
AFL 23.2 ILP 371 EPI 115	
Lambded 3 Lams 7 Weaned 7	

D 200126	BES RAM D200126
JB 180082	JOHANRI EWE JB180082
JB 180050	JOHANRI RAM JB180050
BR 130200	BENDRI OOI BR 130200

J.O.R RAM JOR 180020	BES OOI D 130014
REMKUIL RAM JT 160062	JOHANRI OOI JB 130067
JOHANRI OOI JB 160040	JOHANRI OOI JB 100034
RHENOSTERBOSRUG RAM AP 100097	KINKO OOI JS 080655

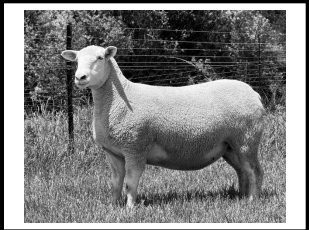
LOGIX
GENETICS CHINA
EBV Analysis 2026-01-21

SELLER REMARKS: Dragtig met 2-ling by TVK 23 0107. Besondere JB-tipe ooi

Growth			Reproduction			
Wn. Dir.	Wean Mat.	Post-Wn.	NLW	TWW	AFL	ILP
105	97	104	99	101	104	99
58%	45%	32%	33%	47%	30%	23%

Logix Merit Index	106	Birth Wt.	3kg
Growth Index	107	Wean Wt.	49.4kg (99)
Reproduction Index	102	Post-Wean	-
		Mature Wt.	-
		ADG Ind.	-
		FCR Ind.	-
		Scrotum	-

LOT 34 (F)



J.A. BARNARD



Lindley, Free State
barnardj226@gmail.com

JB 240150

JOHANRI EWE JB240150

Kuddeboek	SP	
Geb. dtm	2024-07-30	
Oud.	1.5 jaar	
Inteling	4.24%	
Geb. Status	2	
OEL	ILP	OPI
-	-	-

D 200126 (2)
BES RAM D200126

Ouerskap Vaar Moer
DNS
Genomies

JB 220125 (2)
JOHANRI EWE JB220125

OEL 24.1 | ILP 355 | OPI 109
Gelam 2 | Lammers 4 | Gespeen 4

JOR 180020
J.O.R RAM JOR 180020

D 130014
BES OOI D 130014

OEL 16.3 | ILP 376 | OPI 301
Gelam 10 | Lammers 23 | Gespeen 21

JB 200092
JOHANRI ANKER

JB 180124
JOHANRI EWE JB180124

OEL 22.7 | ILP 367 | OPI 115
Gelam 5 | Lammers 11 | Gespeen 11

J.O.R RAM JOR 160035
J.O.R OOI JOR 130277

OEL 20.7 | ILP 329 | OPI 106
Gelam 4 | Lammers 4 | Gespeen 4

RHENOSTERBOSRUG RAM AP 080018
REMKUIL OOI JT 070376

OEL 28.8 | ILP 473 | OPI 118
Gelam 5 | Lammers 7 | Gespeen 5

JOHANRI KETTING
JOHANRI EWE JB180015

OEL 23.3 | ILP - | OPI 92
Gelam 1 | Lammers 3 | Gespeen 3

JOHANRI BARNARD
JOHANRI OOI JB 150044

OEL - | ILP - | OPI 86
Gelam 6 | Lammers 2 | Gespeen -



EBV Analise 2026-01-21

Groeï			Reproduksie			
Spn. Dir.	Spn. Mat.	Na-Spn.	GLS	TWW	OEL	ILP
106	88	94	90	91	64	103
62%	52%	42%	39%	53%	38%	27%

Logix Meriete Indeks 91

Groeï Indeks 103

Reproduksie Indeks 80

Geb. Gew.	3kg
Speen Gew.	54.3kg (109)
Na-Speen	-
Volw. Gew.	-
GDT Ind.	-
VOV Ind.	-
Skrotum	-

VERKOPER OPMERKINGS: Dragtig met 2-ling by JB 24 0085 . Ooi met balans en vroulikeheid

LOT 35 (F)



J.A. BARNARD



Lindley, Free State
barnardj226@gmail.com

JB 240142

JOHANRI OOI JB240142

Kuddeboek	SP	
Geb. dtm	2024-07-27	
Oud.	1.5 jaar	
Inteling	17.4%	
Geb. Status	3	
OEL	ILP	OPI
-	-	-

JB 220041 (2)
JOHANRI RAM JB220041

Ouerskap Vaar Moer
DNS
Genomies

JB 220067 (3)
JOHANRI EWE JB220067

OEL 24.2 | ILP 359 | OPI 113
Gelam 2 | Lammers 5 | Gespeen 5

JB 200072
JOHANRI RAM JB200072

JB 180053
JOHANRI EWE JB180053

OEL 22.4 | ILP 365 | OPI 116
Gelam 6 | Lammers 10 | Gespeen 10

JB 200092
JOHANRI ANKER

JB 180089
JOHANRI EWE JB180089

OEL 22.8 | ILP 384 | OPI 113
Gelam 5 | Lammers 10 | Gespeen 10

JOHANRI RAM JB180064
JOHANRI EWE JB180078

OEL 22.2 | ILP 365 | OPI 90
Gelam 4 | Lammers 5 | Gespeen 5

JOHANRI BARNARD
JOHANRI OOI JB 120160

OEL - | ILP - | OPI 161
Gelam 11 | Lammers 16 | Gespeen 15

JOHANRI KETTING
JOHANRI EWE JB180015

OEL 23.3 | ILP - | OPI 92
Gelam 1 | Lammers 3 | Gespeen 3

JOHANRI BARNARD
JOHANRI OOI JB 120160

OEL - | ILP - | OPI 161
Gelam 11 | Lammers 16 | Gespeen 15



EBV Analise 2026-01-21

Groeï			Reproduksie			
Spn. Dir.	Spn. Mat.	Na-Spn.	GLS	TWW	OEL	ILP
102	89	93	94	93	74	92
58%	44%	34%	34%	47%	33%	26%

Logix Meriete Indeks 92

Groeï Indeks 100

Reproduksie Indeks 85

Geb. Gew.	3kg
Speen Gew.	52.4kg (100)
Na-Speen	-
Volw. Gew.	-
GDT Ind.	-
VOV Ind.	-
Skrotum	-

VERKOPER OPMERKINGS: Dragtig met enkeling by TVK 23 0107. Geronimo dogter met besonderse kapasiteit

LOT 36 (F)



J.A. BARNARD



Lindley, Free State
barnardj226@gmail.com

JB 240158

JOHANRI EWE JB240158

Kuddeboek	SP	
Geb. dtm	2024-07-31	
Oud.	1.5 jaar	
Inteling	8.53%	
Geb. Status	2	
OEL	ILP	OPI
-	-	-

JB 210188 (2)
JOHANRI RAM JB210188 STORM

Ouerskap Vaar Moer
DNS
Genomies

JB 210060 (2)
JOHANRI EWE JB210060

OEL 25.1 | ILP 357 | OPI 111
Gelam 3 | Lammers 6 | Gespeen 6

JB 200092
JOHANRI ANKER

BR 130209
BENDRI OOI BR130209

OEL 23.1 | ILP 435 | OPI 165
Gelam 6 | Lammers 12 | Gespeen 10

JB 180008
JOHANRI RAM JB180008

JB 180059
JOHANRI EWE JB180059

OEL 22.7 | ILP 397 | OPI 87
Gelam 3 | Lammers 4 | Gespeen 3

JOHANRI KETTING
JOHANRI EWE JB180015

OEL 23.3 | ILP - | OPI 92
Gelam 1 | Lammers 3 | Gespeen 3

RHENOSTERBOSRUG RAM AP 100097
KINKO OOI JS 080578

OEL 25.6 | ILP 367 | OPI 103
Gelam 4 | Lammers 6 | Gespeen 5

REMKUIL RAM JT 160062
JOHANRI EWE JB170005

OEL 15.6 | ILP 361 | OPI 138
Gelam 6 | Lammers 13 | Gespeen 13

JOHANRI BARNARD
JOHANRI OOI JB 100034

OEL - | ILP - | OPI 227
Gelam 19 | Lammers 20 | Gespeen 18



EBV Analise 2026-01-21

Groeï			Reproduksie			
Spn. Dir.	Spn. Mat.	Na-Spn.	GLS	TWW	OEL	ILP
112	76	106	97	96	73	92
63%	54%	46%	39%	54%	40%	27%

Logix Meriete Indeks 96

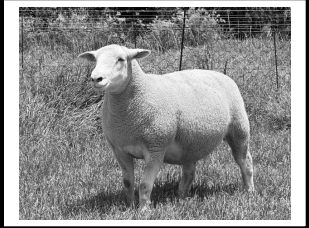
Groeï Indeks 103

Reproduksie Indeks 81

Geb. Gew.	3kg
Speen Gew.	53.7kg (108)
Na-Speen	-
Volw. Gew.	-
GDT Ind.	-
VOV Ind.	-
Skrotum	-

VERKOPER OPMERKINGS: Dragtig met enkeling by JB 24 0020. Storm dogter met bouwvorm

LOT 37 (F)



J.A. BARNARD



Lindley, Free State
barnardj226@gmail.com

JB 240037

JOHANRI EWE JB240037

Herd Book	SP	
Birth date	2024-07-13	
Age	1.6 years	
Inbreeding	13.45%	
Birth Stat.	3	
AFL	ILP	EPI
-	-	-

♂ **JB 210188 (2)**
JOHANRI RAM JB210188 STORM

Parentage	Sire Dam
DNA	
Genomic	

JB 210021 (1)
JOHANRI EWE JB210021

AFL 25.2 | ILP 358 | EPI 115
Lambded 3 | Lambs 7 | Weaned 7

♂ **JB 200092**
JOHANRI ANKER

BR 130209
BENDRI OOI BR130209
AFL 23.1 | ILP 435 | EPI 165
Lambded 6 | Lambs 12 | Weaned 10

♂ **JB 180116**
JOHANRI KETTING

JB 180041
JOHANRI EWE JB180041
AFL 22.3 | ILP 368 | EPI 89
Lambded 3 | Lambs 6 | Weaned 5

♂ **JOHANRI KETTING**
JOHANRI EWE JB180015
AFL 23.3 | ILP - | EPI 92
Lambded 1 | Lambs 3 | Weaned 3

RHENOSTERBOSRUG RAM AP 100097

KINKO OOI JS 080578
AFL 25.6 | ILP 367 | EPI 103
Lambded 4 | Lambs 6 | Weaned 5

♂ **REMKUIL RAM JT 160062**
JOHANRI OOI JB 130067
AFL - | ILP - | EPI 132
Lambded 16 | Lambs 11 | Weaned 11

JOHANRI RAM JB160174

JOHANRI EWE JB170015
AFL 16.6 | ILP 340 | EPI 108
Lambded 6 | Lambs 9 | Weaned 8



SELLER REMARKS: Dragtig met 2-ling by JB 24 0020. Storm dogter, uitstaande agterkwart

Growth			Reproduction			
Wn. Dir.	Wean Mat.	Post-Wn.	NLW	TWW	AFL	ILP
120	76	110	97	100	83	84
63%	54%	46%	40%	54%	41%	29%

Logix Merit Index	103	Birth Wt.	3kg
Growth Index	111	Wean Wt.	52.2kg (105)
Reproduction Index	84	Post-Wean	-
		Mature Wt.	-
		ADG Ind.	-
		FCR Ind.	-
		Scrotum	-

LOT 38 (F)



J.A. BARNARD



Lindley, Free State
barnardj226@gmail.com

JB 240034

JOHANRI EWE JB240034

Herd Book	SP	
Birth date	2024-07-12	
Age	1.6 years	
Inbreeding	15.51%	
Birth Stat.	3	
AFL	ILP	EPI
-	-	-

♂ **JB 210188 (2)**
JOHANRI RAM JB210188 STORM

Parentage	Sire Dam
DNA	
Genomic	

JB 200041 (2)
JOHANRI EWE JB200041

AFL 24.6 | ILP 358 | EPI 102
Lambded 3 | Lambs 6 | Weaned 6

♂ **JB 200092**
JOHANRI ANKER

BR 130209
BENDRI OOI BR130209
AFL 23.1 | ILP 435 | EPI 165
Lambded 6 | Lambs 12 | Weaned 10

♂ **JB 180116**
JOHANRI KETTING

JB 180010
JOHANRI EWE JB180010
AFL 23.1 | ILP 442 | EPI 100
Lambded 5 | Lambs 9 | Weaned 9

♂ **JOHANRI KETTING**
JOHANRI EWE JB180015
AFL 23.3 | ILP - | EPI 92
Lambded 1 | Lambs 3 | Weaned 3

RHENOSTERBOSRUG RAM AP 100097

KINKO OOI JS 080578
AFL 25.6 | ILP 367 | EPI 103
Lambded 4 | Lambs 6 | Weaned 5

♂ **REMKUIL RAM JT 160062**
JOHANRI OOI JB 130067
AFL - | ILP - | EPI 132
Lambded 16 | Lambs 11 | Weaned 11

♂ **REMKUIL RAM JT 160062**
JOHANRI EWE JB170026
AFL 15.5 | ILP 353 | EPI 89
Lambded 2 | Lambs 4 | Weaned 4



SELLER REMARKS: Dragtig met 2-ling by JB 24 0085. Wakker Storm dogter

Growth			Reproduction			
Wn. Dir.	Wean Mat.	Post-Wn.	NLW	TWW	AFL	ILP
120	69	114	99	99	73	83
63%	54%	46%	40%	54%	41%	29%

Logix Merit Index	99	Birth Wt.	3kg
Growth Index	108	Wean Wt.	49.7kg (100)
Reproduction Index	79	Post-Wean	-
		Mature Wt.	-
		ADG Ind.	-
		FCR Ind.	-
		Scrotum	-

LOT 39 (F)



J.A. BARNARD



Lindley, Free State
barnardj226@gmail.com

JB 240110

JOHANRI EWE JB240110

Herd Book	SP	
Birth date	2024-07-18	
Age	1.6 years	
Inbreeding	14.12%	
Birth Stat.	2	
AFL	ILP	EPI
-	-	-

♂ **JB 210188 (2)**
JOHANRI RAM JB210188 STORM

Parentage	Sire Dam
DNA	
Genomic	

JB 220032 (1)
JOHANRI EWE JB220032

AFL 24 | ILP - | EPI 96
Lambded 1 | Lambs 2 | Weaned 2

♂ **JB 200092**
JOHANRI ANKER

BR 130209
BENDRI OOI BR130209
AFL 23.1 | ILP 435 | EPI 165
Lambded 6 | Lambs 12 | Weaned 10

♂ **JB 200073**
JOHANRI RAM JB200073

JB 200023
JOHANRI EWE JB200023
AFL 24.3 | ILP 382 | EPI 93
Lambded 2 | Lambs 3 | Weaned 3

♂ **JOHANRI KETTING**
JOHANRI EWE JB180015
AFL 23.3 | ILP - | EPI 92
Lambded 1 | Lambs 3 | Weaned 3

RHENOSTERBOSRUG RAM AP 100097

KINKO OOI JS 080578
AFL 25.6 | ILP 367 | EPI 103
Lambded 4 | Lambs 6 | Weaned 5

♂ **JOHANRI KETTING**
JOHANRI EWE JB180018
AFL 23.2 | ILP 368 | EPI 101
Lambded 6 | Lambs 11 | Weaned 9

♂ **JOHANRI KETTING**
JOHANRI EWE JB180070
AFL 21.9 | ILP 357 | EPI 92
Lambded 2 | Lambs 5 | Weaned 5

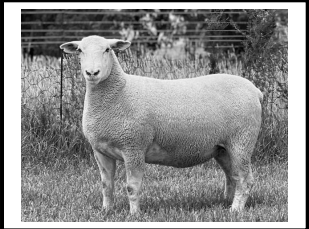


SELLER REMARKS: Dragtig met 2-ling by TVK 23 0107. Baie korrekte en vroulike ooi

Growth			Reproduction			
Wn. Dir.	Wean Mat.	Post-Wn.	NLW	TWW	AFL	ILP
112	82	106	89	92	75	81
62%	50%	43%	35%	51%	38%	24%

Logix Merit Index	93	Birth Wt.	3kg
Growth Index	106	Wean Wt.	48.7kg (98)
Reproduction Index	78	Post-Wean	-
		Mature Wt.	-
		ADG Ind.	-
		FCR Ind.	-
		Scrotum	-

LOT 40 (F)



J.A. BARNARD

Lindley, Free State
barnardj226@gmail.com

JB 240131

JOHANRI EWE JB240131

Kuddeboek	SP
Geb. dtm	2024-07-24
Oud.	1.5 jaar
Inteling	11.73%
Geb. Status	1
OEL	ILP OPI
-	- -

♂ **JB 220041 (2)**
JOHANRI RAM JB220041

Ouerskap Vaar Moer

DNS

Genomies

JB 210123 (3)
JOHANRI EWE JB210123

OEL 24 | ILP 375 | OPI 103
Gelam 3 | Lammers 5 | Gespeen 5

♂ **JB 200072**
JOHANRI RAM JB200072

JB 180053
JOHANRI EWE JB180053

OEL 22.4 | ILP 365 | OPI 116
Gelam 6 | Lammers 10 | Gespeen 10

JB 190014
JOHANRI RAM JB190014

JB 170168
JOHANRI EWE JB170168

OEL 21.8 | ILP 383 | OPI 100
Gelam 5 | Lammers 9 | Gespeen 9

JOHANRI RAM JB180064

JOHANRI EWE JB180078
OEL 22.2 | ILP 365 | OPI 90
Gelam 4 | Lammers 5 | Gespeen 5

JOHANRI BARNARD

JOHANRI OOI JB 120160
OEL - | ILP - | OPI 161
Gelam 11 | Lammers 16 | Gespeen 15

JOHANRI RAM JB180008

WELPIC RAM JP150028

JOHANRI OOI JB 130071
OEL - | ILP - | OPI 135
Gelam 16 | Lammers 13 | Gespeen 12

LOGIX
GENETICS CENTRE
EBV Analise 2026-01-21

Groeï			Reproduksie			
Spn. Dir.	Spn. Mat.	Na-Spn.	GLS	TWW	OEL	ILP
98	91	92	81	81	100	89
59%	46%	32%	34%	48%	31%	25%

Logix Meriete Indeks 87

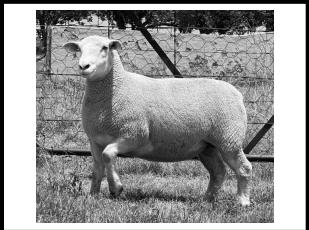
Groeï Indeks 97

Reproduksie Indeks 82

Geb. Gew.	4kg
Speen Gew.	50.5kg (101)
Na-Speen	-
Volw. Gew.	-
GDT Ind.	-
VOV Ind.	-
Skrotum	-

VERKOPER OPMERKINGS: Dragtig met 2-ling by J 24 0009. Geronimo dogter met wakker houding

LOT 41 (F)



J.A. BARNARD

Lindley, Free State
barnardj226@gmail.com

JB 240036

JOHANRI EWE JB240036

Kuddeboek	SP
Geb. dtm	2024-07-13
Oud.	1.6 jaar
Inteling	13.45%
Geb. Status	3
OEL	ILP OPI
-	- -

♂ **JB 210188 (2)**
JOHANRI RAM JB210188 STORM

Ouerskap Vaar Moer

DNS

Genomies

JB 210021 (1)
JOHANRI EWE JB210021

OEL 25.2 | ILP 358 | OPI 115
Gelam 3 | Lammers 7 | Gespeen 7

♂ **JB 200092**
JOHANRI ANKER

BR 130209
BENDRI OOI BR130209

OEL 23.1 | ILP 435 | OPI 165
Gelam 6 | Lammers 12 | Gespeen 10

♂ **JB 180116**
JOHANRI KETTING

JB 180041
JOHANRI EWE JB180041

OEL 22.3 | ILP 368 | OPI 89
Gelam 3 | Lammers 6 | Gespeen 5

♂ **JOHANRI KETTING**

JOHANRI EWE JB180015
OEL 23.3 | ILP - | OPI 92
Gelam 11 | Lammers 3 | Gespeen 3

RHENOSTERBOSRUG RAM AP 100097

KINKO OOI JS 080578
OEL 25.6 | ILP 367 | OPI 103
Gelam 4 | Lammers 6 | Gespeen 5

♂ **REMKUIL RAM JT 160062**

JOHANRI OOI JB 130067
OEL - | ILP - | OPI 132
Gelam 16 | Lammers 11 | Gespeen 11

JOHANRI RAM JB160174

JOHANRI EWE JB170015
OEL 16.6 | ILP 340 | OPI 108
Gelam 6 | Lammers 9 | Gespeen 8

LOGIX
GENETICS CENTRE
EBV Analise 2026-01-21

Groeï			Reproduksie			
Spn. Dir.	Spn. Mat.	Na-Spn.	GLS	TWW	OEL	ILP
120	76	110	97	100	83	84
63%	54%	46%	40%	54%	41%	29%

Logix Meriete Indeks 103

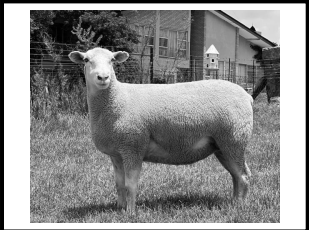
Groeï Indeks 111

Reproduksie Indeks 84

Geb. Gew.	3kg
Speen Gew.	51.2kg (103)
Na-Speen	-
Volw. Gew.	-
GDT Ind.	-
VOV Ind.	-
Skrotum	-

VERKOPER OPMERKINGS: Dragtig met enkeling by JB 24 0085. Mooi ooi met lekker dik bene

LOT 42 (F)



J.A. BARNARD

Lindley, Free State
barnardj226@gmail.com

JB 240156

JOHANRI EWE JB240156

Kuddeboek	SP
Geb. dtm	2024-07-31
Oud.	1.5 jaar
Inteling	4.1%
Geb. Status	2
OEL	ILP OPI
-	- -

D 200126 (2)
BES RAM D200126

Ouerskap Vaar Moer

DNS

Genomies

JB 220042 (2)
JOHANRI EWE JB220042

OEL 24.4 | ILP 353 | OPI 103
Gelam 2 | Lammers 4 | Gespeen 4

JOR 180020
J.O.R RAM JOR 180020

D 130014
BES OOI D 130014

OEL 16.3 | ILP 376 | OPI 301
Gelam 10 | Lammers 23 | Gespeen 21

♂ **JB 200072**
JOHANRI RAM JB200072

JB 180053
JOHANRI EWE JB180053

OEL 22.4 | ILP 365 | OPI 116
Gelam 6 | Lammers 10 | Gespeen 10

J.O.R RAM JOR 160035

J.O.R OOI JOR 130277
OEL 20.7 | ILP 329 | OPI 106
Gelam 4 | Lammers 4 | Gespeen 4

RHENOSTERBOSRUG RAM AP 080018

REMKUIL OOI JT 070376
OEL 28.8 | ILP 473 | OPI 118
Gelam 5 | Lammers 7 | Gespeen 5

JOHANRI RAM JB180064

JOHANRI EWE JB180078
OEL 22.2 | ILP 365 | OPI 90
Gelam 4 | Lammers 5 | Gespeen 5

JOHANRI BARNARD

JOHANRI OOI JB 120160
OEL - | ILP - | OPI 161
Gelam 11 | Lammers 16 | Gespeen 15

LOGIX
GENETICS CENTRE
EBV Analise 2026-01-21

Groeï			Reproduksie			
Spn. Dir.	Spn. Mat.	Na-Spn.	GLS	TWW	OEL	ILP
99	77	89	91	84	71	106
62%	52%	43%	39%	53%	38%	27%

Logix Meriete Indeks 84

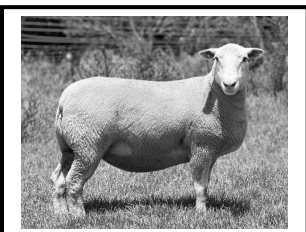
Groeï Indeks 91

Reproduksie Indeks 75

Geb. Gew.	3kg
Speen Gew.	42.2kg (85)
Na-Speen	-
Volw. Gew.	-
GDT Ind.	-
VOV Ind.	-
Skrotum	-

VERKOPER OPMERKINGS: Dragtig met 2-ling by TVK 23 0107. Besondere vroulike ooi

LOT 43 (F)



dormer



J.A. BARNARD



Lindley, Free State
barnardj226@gmail.com

JB 240003

JOHANRI EWE JB240003

Herd Book	SP	
Birth date	2024-07-08	
Age	1.6 years	
Inbreeding	8.68%	
Birth Stat.	3	
AFL	ILP	EPI
-	-	-

JB 230079 (1)
JOHANRI RAM JB230079

Parentage	Sire Dam
DNA	
Genomic	

JB 210068 (2)
JOHANRI EWE JB210068

AFL 24.4 | ILP 368 | EPI 110
Lambded 6 | Lambs 7 | Weaned 7

D 200126
BES RAM D200126

J.O.R RAM JOR 180020
BES OOI D 130014
AFL 16.3 | ILP 376 | EPI 301
Lambded 10 | Lambs 23 | Weaned 21

JB 180082
JOHANRI EWE JB180082
AFL - | ILP - | EPI 111
Lambded 6 | Lambs 9 | Weaned 9

JB 180008
JOHANRI RAM JB180008

JB 180115
JOHANRI EWE JB18115
AFL - | ILP - | EPI 94
Lambded 6 | Lambs 9 | Weaned 7

REMKUIL RAM JT 160062
JOHANRI OOI JB 130067
AFL - | ILP - | EPI 132
Lambded 16 | Lambs 11 | Weaned 11

REMKUIL RAM JT 160062
JOHANRI EWE JB170005
AFL 15.6 | ILP 361 | EPI 138
Lambded 6 | Lambs 13 | Weaned 13

JOHANRI BARNARD
JOHANRI OOI JB 150044
AFL - | ILP - | EPI 86
Lambded 6 | Lambs 2 | Weaned -

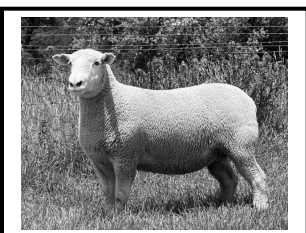
Growth			Reproduction			
Wn. Dir.	Wean Mat.	Post-Wn.	NLW	TWW	AFL	ILP
106	82	106	97	94	73	94
58%	46%	36%	35%	48%	33%	27%

Logix Merit Index	93	Birth Wt.	3kg
Growth Index	100	Wean Wt.	46kg (92)
Reproduction Index	83	Post-Wean	-
		Mature Wt.	-
		ADG Ind.	-
		FCR Ind.	-
		Scrotum	-

LOGIX
GENETICS ONLINE
EBV Analysis 2026-01-21

SELLER REMARKS: Top ooi uit die Warrior lyn

LOT 44 (F)



dormer



J.A. BARNARD



Lindley, Free State
barnardj226@gmail.com

JB 240017

JOHANRI EWE JB240017

Herd Book	SP	
Birth date	2024-07-10	
Age	1.6 years	
Inbreeding	11.73%	
Birth Stat.	1	
AFL	ILP	EPI
-	-	-

JB 220041 (2)
JOHANRI RAM JB220041

Parentage	Sire Dam
DNA	
Genomic	

JB 210125 (3)
JOHANRI EWE JB210125

AFL 24.5 | ILP 343 | EPI 92
Lambded 2 | Lambs 3 | Weaned 3

JB 200072
JOHANRI RAM JB200072

JB 180053
JOHANRI EWE JB180053
AFL 22.4 | ILP 365 | EPI 116
Lambded 6 | Lambs 10 | Weaned 10

JB 190014
JOHANRI RAM JB190014

JB 170168
JOHANRI EWE JB180168
AFL 21.8 | ILP 383 | EPI 100
Lambded 5 | Lambs 9 | Weaned 9

JOHANRI RAM JB180064
JOHANRI EWE JB180078
AFL 22.2 | ILP 365 | EPI 90
Lambded 4 | Lambs 5 | Weaned 5

JOHANRI BARNARD
JOHANRI OOI JB 120160
AFL - | ILP - | EPI 161
Lambded 11 | Lambs 16 | Weaned 15

JOHANRI RAM JB180008
JOHANRI EWE JB180168
AFL 21.8 | ILP 383 | EPI 100
Lambded 5 | Lambs 9 | Weaned 9

WELPIC RAM JP150028
JOHANRI OOI JB 130071
AFL - | ILP - | EPI 135
Lambded 16 | Lambs 13 | Weaned 12

Growth			Reproduction			
Wn. Dir.	Wean Mat.	Post-Wn.	NLW	TWW	AFL	ILP
98	90	92	83	83	96	94
58%	45%	32%	34%	47%	31%	25%

Logix Merit Index	88	Birth Wt.	4kg
Growth Index	97	Wean Wt.	49.2kg (99)
Reproduction Index	82	Post-Wean	-
		Mature Wt.	-
		ADG Ind.	-
		FCR Ind.	-
		Scrotum	-

LOGIX
GENETICS ONLINE
EBV Analysis 2026-01-21

SELLER REMARKS: Vol-vleis Geronimo dogter

LOT 45 (F)



dormer



J.A. BARNARD



Lindley, Free State
barnardj226@gmail.com

JB 240021

JOHANRI EWE JB240021

Herd Book	SP	
Birth date	2024-07-10	
Age	1.6 years	
Inbreeding	6.64%	
Birth Stat.	1	
AFL	ILP	EPI
-	-	-

JB 210188 (2)
JOHANRI RAM JB210188 STORM

Parentage	Sire Dam
DNA	
Genomic	

JB 180030 (3)
JOHANRI EWE JB180030

AFL 22.6 | ILP 364 | EPI 108
Lambded 5 | Lambs 11 | Weaned 11

JB 200092
JOHANRI ANKER

BR 130209
BENDRI OOI BR130209
AFL 23.1 | ILP 435 | EPI 165
Lambded 6 | Lambs 12 | Weaned 10

JB 160174
JOHANRI RAM JB160174

JB 160103
JOHANRI EWE JB160103
AFL 18.1 | ILP 348 | EPI 135
Lambded 7 | Lambs 15 | Weaned 15

JOHANRI KETTING
JOHANRI EWE JB180015
AFL 23.3 | ILP - | EPI 92
Lambded 11 | Lambs 3 | Weaned 3

RHENOSTERBOSRUG RAM AP 100097
KINKO OOI JS 080578
AFL 25.6 | ILP 367 | EPI 103
Lambded 4 | Lambs 6 | Weaned 5

JOHANRI BARNARD
JOHANRI OOI JB 120160
AFL - | ILP - | EPI 161
Lambded 11 | Lambs 16 | Weaned 15

JOHANRI RAM JB 140174
JOHANRI OOI JB 100057
AFL 36.4 | ILP 276 | EPI 100
Lambded 5 | Lambs 11 | Weaned 10

Growth			Reproduction			
Wn. Dir.	Wean Mat.	Post-Wn.	NLW	TWW	AFL	ILP
106	70	96	103	95	96	93
64%	55%	44%	40%	55%	39%	26%

Logix Merit Index	96	Birth Wt.	4kg
Growth Index	95	Wean Wt.	49.8kg (100)
Reproduction Index	88	Post-Wean	-
		Mature Wt.	-
		ADG Ind.	-
		FCR Ind.	-
		Scrotum	-

LOGIX
GENETICS ONLINE
EBV Analysis 2026-01-21

SELLER REMARKS: Uitstekende Storm dogter met goeie balans

EXPLANATION OF CATALOGUE ABBREVIATIONS		VERDUIDELIKING VAN KATALOGUS AFKORTINGS	
Lot Number	LOT	LOT	Lot Nommer
Animal sex: M - Male, F - Female	M / F	M / V	Dier geslag: M - Manlik, V - Vroulik
Estimated breeding value	EBV	EBV	Beraamde teelwaarde
Animal identification number	ID	ID	Dier se identifikasie nommer
Herd Book Section (SEC)	Herd Book	Kuddeboek	Kuddeboek Afdeling (SEC)
SEC: Pending Registration	PEN	PEN	SEC: Wag vir Registrasie
SEC: Not for Registration	NFR	NFR	SEC: Nie vir Registrasie
SEC: Foundation Generation	FO	FO	SEC: Fondasie Generasie
SEC: Appendix A	A	A	SEC: Aanhangsel A
SEC: Appendix B	B	B	SEC: Aanhangsel B
SEC: Studbook Proper, a registered animal	SP	SP	SEC: Studbook Proper, 'n geregistreerde dier
Age in years	AGE	OUD.	Ouderdom in jaar
Animal is a singleton, Twin, Triplet etc.	Birth Stat.	Geb. Status	Dier is n enkeling, tweeling, drieling esv.
Age at First Lambing	AFL	OEL	Ouderdom met Eerst Lamming
Inter-Lambing Period	ILP	ILP	Interlam Periode
Ewe Production Index	EPI	OPI	Ooi Produksie Indeks
Number of times lambed	Lambed	Gelam	Aantal keer gelam
Number of lambs born	Lambs	Lammers	Aantal lammers gebore
Number of lambs weaned	Weaned	Gespeen	Aantal lammers gespeen
Parentage verification	Parentage	Ouerskap	Ouerskap verifikasie
Microsatellite parentage verification	DNA	DNS	Mikrosateliet ouerskap verifikasie
Microsatellite parentage verification	DNA	DNS	Mikrosateliet ouerskap verifikasie
Genomic Testing via SNPs	Genomic	Genomies	Genetiese toetsing dmv SNPs
Genomically Tested	GT	GT	Genomies Getoets
Logix Merit Index	LMI	LMI	Logix Meriete Indeks
Growth Index	GI	GI	Groei Indeks
Reproduction Index	RI	RI	Reproduksie Indeks
Wean Direct breeding value	Wean Dir.	Spn. Dir.	Speen Direk teelwaarde
Wean Maternal breeding value	Wean Mat.	SPn. Mat.	Speen Maternaal teelwaarde
Post-Wean breeding value	Post-Wn.	Na-pn.	Na-Speen teelwaarde
Number of Lambs Weaned breeding value	NLW	GLS	Getal Lammers Gespeen teelwaarde
Total Weight Weaned breeding value	TWW	TWW	Totale Gewig Gespeen teelwaarde
Average Daily Gain (g/day)	ADG	GDT	Gemiddelde Daaglikse Toename
Feed Conversion Ratio (kg:kg)	FCR	VOV	Voeromset Verhouding

Sales Catalogue Herd Rams / Ewes / Verkoopskatalogus Kudderamme / Ooie DORMER

Progeny not for Registration / Nageslag nie vir Registrasie nie

Compiled by the South African Stud Book Association and Logix Small Stock, Pedigree- and Performance data certified correct
Saamgestel deur die Suid-Afrikaanse Stamboekvereniging en Logix Kleinvee, Stamboom- en Prestasiedata korrek gesertifiseer

Rams / Ramme

Animal ID		Birth Date	Status	Wean Speen			Post Wean Naspeen			NLW%	VR	Own Lamb Record / Eie lamrekord Dam lamb record / Moer Lamrekord						Sire / Vaar Status		Dam / Moer Status		Buyer comment/price
LOT	Dier ID	Geb. Datum	GEN	Ind	Dir ^{Acc} _{Akk}	Mat ^{Acc} _{Akk}	Ind	Dir ^{Acc} _{Akk}	GLS%	SI% SD	1st	ILP	TL	LB	LS	MLI	EPI	Sire / Vaar	Dam / Moer	Sire / Vaar	Dam / Moer	Koper opmerking/prys
0525999 MNR. J.A. BARNARD, JOHANRI POSBUS 122, LINDLEY, 9630																						
17	JB 24 0065	03	NFR															JB 22 0041(02)	JB 20 0072	JB 18 0053		
Comment: Opmerking:																						
18	JB 24 0002	03 08/07/2024	LMB NFR	91	2.3 ¹⁰⁶ ₅₈	-1.64 ⁸² ₄₆	2.25 ¹⁰⁷ ₃₆	-1.25 ⁸⁹ ₃₄			24.4	368	3	7	7	89	110	D 200126	JB 230079 (01) JB 180082	JB 210068 (02) JB 180008	JB 180115	
Comment: Opmerking:																						
19	JB 24 0035	03 13/07/2024	REG NFR	97	3.98 ¹¹⁹ ₆₃	-2.14 ⁷⁶ ₅₄	2.69 ¹⁰⁹ ₄₆	-2.74 ⁷⁵ ₃₉			25.2	358	3	7	7	100	115	JB 210188 (02) JB 200092	BR 130209	JB 210021 (01) JB 180116	JB 180041	
Comment: Opmerking:																						
20	JB 24 0083	03	NFR															JB 210188 (02)	JB 20 0092	BR 130209		
Comment: Opmerking:																						
21	JB 24 0126	03 22/07/2024	REG NFR	98	1.97 ¹⁰⁴ ₆₃	-1.99 ⁷⁸ ₅₄	0.6 ⁹⁸ ₄₃	-0.98 ⁹¹ ₄₀			24.0	371	4	8	8	95	116	D 200126 (02) JOR 180020	D 130014	JB 200085 (02) JB 180008	JB 180040	
Comment: Opmerking:																						
22	JB 24 0138	02	NFR															JB 22 0041	JB 20 0072	JB 18 0053		

Comment:
Opmerking:

Symbol Definitions:	* Top 10%	+ Top 10% to Top 40%	= Top 40% to Bottom 40%	- Bottom 40% to Bottom 10%	x Bottom 10%	(#) Own Lamb Record	(\$) Pre-wean
Simbool Beskrywings:	* Boonste 10%	+ Boonste 10% tot Boonste 40%	= Boonste 40% tot Onderste 40%	- Onderste 40% tot Onderste 10%	x Onderste 10%	(#) Eie Lam Rekord	(\$) Voorspeen
NLW%: EBV for Number of Lambs Weaned	GLS%: Ebv van Getal Lammers Gespeen			1st: Age First lamb / Ouderdom Eerste Lam			
ILP: Inter Lambing Period / Tussenlam Periode	TL: Times Lambed / Kere Gelam			LB: Number of Lambs Born / Aantal Lammers Gebore			
LS: Number of Lambs Weaned / Aantal Lammers Gespeen	MLI: Mean Lamb Index / Gemiddelde Lamindeks			EPI: Ewe Production Index / Ooi Produksie Indeks			
SI%: Selection Index Percentage / Keuringindeks Persentasie (VR)	SD: Scrotum Deviation / Skrotumafwyking						

Sales Catalogue Herd Rams / Ewes / Verkoopskatalogus Kudderamme / Ooie DORMER

Progeny not for Registration / Nageslag nie vir Registrasie nie

Compiled by the South African Stud Book Association and Logix Small Stock, Pedigree- and Performance data certified correct
Saamgestel deur die Suid-Afrikaanse Stamboekvereniging en Logix Kleinvee, Stamboom- en Prestasiedata korrek gesertifiseer

Rams / Ramme

Animal ID LOT Dier ID	Birth Date Geb. Datum	Status GEN	Wean Speen			Post Wean Naspeen		NLW% GLS%	VR SI% SD	Own Lamb Record / Eie lamrekord Dam lamb record / Moer Lamrekord							Sire / Vaar Status		Dam / Moer Status		Buyer comment/price
			Ind	Dir ^{Acc} _{Akk}	Mat ^{Acc} _{Akk}	Ind	Dir ^{Acc} _{Akk}			1st	ILP	TL	LB	LS	MLI	EPI	Sire / Vaar	Dam / Moer	Sire / Vaar	Dam / Moer	Koper opmerking/prys
23 JB 24 0101	02 17/07/2024	REG NFR	102	2.39 ¹⁰⁷ ₆₂	-1.05 ⁸⁹ ₅₀	0.15 ⁹⁶ ₄₀	-0.96 ⁹² ₃₆		23.9		1	2	2	108	96	D 200126 (02) JOR 180020	D 130014	JB 220052 (02) JB 200092	JB 180003		
Comment: Opmerking:																					
24 JB 24 0132	02 24/07/2024	REG NFR	103	3.3 ¹¹⁴ ₆₃	-2.52 ⁷² ₅₃	1.74 ¹⁰⁴ ₄₅	-2.2 ⁸⁰ ₃₆		23.9	376	2	4	4	103	106	JB 210188 (02) JB 200092	BR 130209	JB 220160 (02) JB 200072	JB 200097		
Comment: Opmerking:																					
25 JB 24 0074	01	NFR														D 20 0126 (02) JOR 180020	D 130014				
Comment: Opmerking:																					
0700891 MNR. M. KLOPPER, POSBUS 281 , HERTZOGVILLE, 9432																					
26 MK 24 0051	02 14/08/2024	LMB NFR	88	-1.16 ⁸⁰ ₅₄	0 ¹⁰¹ ₄₃	0.14 ⁹⁶ ₂₇	-1.39 ⁸⁸ ₂₆		29.6	338	4	7	5	95	101	JB 220145 (02) JB 200072	JB 200005	MK 200001 (01) J 190042			
Comment: Opmerking:																					
27 MK 24 0050	02 14/08/2024	LMB NFR	101	-0.79 ⁸³ ₅₄	-0.07 ¹⁰⁰ ₄₃	0.56 ⁹⁸ ₂₇	-1.39 ⁸⁸ ₂₆		29.6	338	4	7	5	95	101	JB 220145 (02) JB 200072	JB 200005	MK 200001 (01) J 190042			
Comment: Opmerking:																					

Symbol Definitions:	* Top 10%	+ Top 10% to Top 40%	= Top 40% to Bottom 40%	- Bottom 40% to Bottom 10%	x Bottom 10%	(#) Own Lamb Record	(\$) Pre-wean
Simbool Beskrywings:	Boonste 10%	Boonste 10% tot Boonste 40%	Boonste 40% tot Onderste 40%	Onderste 40% tot Onderste 10%	Onderste 10%	Eie Lam Rekord	Voorspeen
NLW%:	EBV for Number of Lambs Weaned		GLS%:	Ebv van Getal Lammers Gespeen		1st:	Age First lamb / Ouderdom Eerste Lam
ILP:	Inter Lambing Period / Tussenlam Periode		TL:	Times Lambed / Kere Gelam		LB:	Number of Lambs Born / Aantal Lammers Gebore
LS:	Number of Lambs Weaned / Aantal Lammers Gespeen		MLI:	Mean Lamb Index / Gemiddelde Lamindeks		EPI:	Ewe Production Index / Ooi Produksie Indeks
SI%:	Selection Index Percentage / Keuringindeks Persentasie (VR)		SD:	Scrotum Deviation / Skrotumafwyking			

Kommersiële ooie



	Johanri Dormers	Johan Barnard	*084 941 1129	
Lot	Ouderdom	Dragtigheidsstatus	Diere in lot	Prys
46	2024 Ooi	3-ling	1	
47	2024 Ooie	2-ling	4	
48	2024 Ooie	2-ling	4	
49	2024 Ooie	1-ling	3	
50	2024 Ooie	1-ling	2	
51	2024 Ooie	Oop	2	
52	2025 Ooie	Oop	5	
53	2025 Ooie	Oop	5	



	Hoogland Boerdery	Deana de Beer	*073 177 0155	
Lot	Ouderdom	Dragtigheidsstatus	Diere in lot	Prys
54	2 - 4 tand ooie	Met Lammers	4	
55	4 tand - volbek ooie	Dragtig	5	
56	2 tand ooie	Oop	5	
57	Ooie	Lammers	6	

		Jaco Cohen		
Lot	Ouderdom	Dragtigheidsstatus	Diere in lot	Prys
58	Ooie Lammers		5	
59	Ooie Lammers		5	
60	Ooie Lammers		5	
61	Ooie Lammers		5	
62	Ooie Lammers		5	

RULE OF AUCTION TERMS AND CONDITIONS

1. This auction will be held under the control of BKB Limited whether directly or through a subsidiary company (hereinafter referred to as "the Auctioneer or BKB") with business premises situated at 63 Grahamstown Road North End Gqeberha:
2. The Auctioneer is hereby appointed by the Purchaser and Seller to act for and on behalf of the Purchaser and Seller as agent in accordance with section 54 of the Value Added Tax Act 1991, in respect of all tax invoices, credit and/or debit notes in respect of all livestock, game and/or goods offered at the auction or any costs of transport and insurance premiums paid for on behalf of the Purchaser and/or the Seller.
3. The rules of this auction shall comply with the provisions of Section 45 and all relevant regulations to the Consumer Protection Act 68 of 2008.
4. For greater clarity Section 45(1-4) states as follows:
 - 4.1 In this section, "auction" includes a sale in execution of or pursuant to a court order, to the extent that the order contemplates that the sale is to be conducted by an auction.
 - 4.2 When goods are put up for sale by auction, each lot is, unless there is evidence to the contrary, regarded to be the subject of a separate transaction.
 - 4.3 A sale by auction is completed when the auctioneer announces its completion by the fall of the hammer, or in any other customary manner, and until that announcement is made, a bid may be retracted.
 - 4.4 Notice must be given in advance that a sale by auction is subject to:
 - 4.4.1 A reserved or upset price; or
 - 4.4.2 A right to bid by or on behalf of the owner or Auctioneer, in which case the owner or Auctioneer, or any one person on behalf of the owner or Auctioneer may bid at the auction.
5. Until the fall of the hammer as contemplated in Section 45(3) of the Act, any bid may be retracted or declined by the Auctioneer if not compliant with the regulations of the Consumer Protection Act.
6. The auction is further subject to the APAC Biosecurity Rules for Livestock Agents published in Board Notice 135 of 2020. These rules can be accessed at www.bkb.co.za.
7. Unless so stated by the Auctioneer prior to commencement of the auction, the auction is not an absolute auction but subject to reserved prices settled by the Sellers and as pointed out by the Auctioneer prior to the sale of the specific asset or lot.
8. The Auctioneer provides no guarantee and makes no representation regarding sale prices and unless the Auctioneer's mandate states otherwise, the Sellers have the option to withdraw lots from the auction where reserve prices are not obtained. The Seller shall instruct the Auctioneer in this regard who shall announce the Seller's decision after bidding has closed relating to a relevant lot.
9. The auction shall take place at the date and time as advertised or published and will not be postponed or delayed, enabling any member or group of the public to partake in the auction.
10. Should the Auctioneer become aware of any fault on advertising material or any other publication or amendment to these Rules of Auction, the Auctioneer will prior to the auction point out and when necessary, amend such mistakes in the advertisement or publication.
11. Any person attending the auction to enter a bid, must prior to the auction register as a buyer on the bidders' roll and provide documentation that identifies the bidder as prescribed by FICA and the Risk Management Compliance Program (RMCP) adopted and amended by BKB from time to time. The RMCP can be accessed at www.bkb.co.za. The purchaser shall sign the bidders' roll.
12. Any person who attends the auction to enter a bid on behalf of another person must be duly authorised thereto by means of a written letter of authority from its principal and such a person together with his principal must provide both all necessary information as required by FICA and the RMCP regarding proof of their identity. The bidders' roll must be signed by such a person who will also sign on behalf of its principal duly authorised to do so.

13. Where the principal is a company the letters of authority shall appear on the letterhead of the company together with a certified copy of a resolution authorising the person to bid on behalf of the company and to sign the bidder's roll on behalf of the principal. (For purposes of this rule any reference to a company will include any reference to juristic person including partnerships, trusts or incorporated entities)
14. All bidders have a right to inspect all goods put up for sale and the auctioneer shall provide reasonable time and access prior to the start of the auction for such an inspection.
15. All livestock is sold "voetstoots" and the purchasers do not enjoy the protection of Section 55 and 56 of the Consumer Protection Act.
16. Any information provided regarding the quality, breeding, age, date of insemination, condition, reproductive status or any information regarding health, production or mass or any other aspect of the livestock, is provided by the Seller and any misrepresentation by the Seller is without the cooperation or knowledge of the Auctioneer. Any right of recourse as a result of such misrepresentation shall be against the Seller who indemnifies the Auctioneer against any claim or damages suffered and the Purchaser nor registered buyers shall have any claim against the Auctioneer.
17. Any bid made does not include VAT which, where applicable, will be added to the bidding price for which a VAT invoice will be issued.
18. The purchase price, Auctioneer's commissions (if payable by the purchaser), all statutory levies, the transport costs (if any) and the insurance costs (if any) are immediately payable in cash by the purchaser to the Auctioneer upon entering into the transaction or payable by EFT within an agreed time period thereafter if so agreed before the auction. Any payment made in cash is further subject to cash or any other handling fees.
19. Should the purchaser not pay the purchase price on finalisation of the auction and fail to make arrangements for payment with the Auctioneer, then the Auctioneer may cancel the sale and treat the assets or lots as unsold lots which may again be presented on the auction for sale or be sold out of hand by means of liaison services, depending on the Seller's mandate to the auctioneer.
20. In the event that purchaser has made necessary finance arrangements with the Auctioneer or payment of the purchase price is only due within an agreed time period after the auction, the Purchaser hereby authorises the Auctioneer/BKB to pay the purchase price and/or costs of transport and/or cost of insurance and any other agreed cost on behalf of the purchaser to the Seller and other service providers. In such an event, payment of the purchase price is due by the Purchaser to BKB either on the expiry of the agreed time period calculated from the date of finalisation of the auction or on the terms of repayment agreed with the purchaser in a separate credit agreement or sale agreement entered into between the purchaser and the Auctioneer. Should the purchaser however fail to make payment within the agreed time, the Auctioneer will be entitled to add interest calculated at the current bank prime rate, plus 5% (five percent) from the due date to date of payment to the capital amount outstanding. The interest will be calculated monthly and capitalised.
21. All payments made by the Auctioneer to the Seller on behalf of the Purchaser in terms of this clause will be made no later than 5 (five) working days calculated from finalisation of the auction.
22. Where BKB lent and advanced monies to the purchaser for payment of the purchase price of any goods or livestock or payment of any transport costs or insurance premiums, no defense of whatsoever nature which the Purchaser may raise against the Seller or the transport contractor or the insurance company may be raised against BKB and the Purchaser shall still be obligated to pay all amounts owing, together with further interest and costs thereon raised as contemplated in clause 20, to BKB. The conditions of this clause shall not affect any rights, entitlement or remedies the purchaser may have against the Seller, transport contractor or insurance company.
23. Where the Seller is already indebted to BKB or any of its affiliate companies or any department of BKB prior to entering into this transaction, irrespective of the cause of such indebtedness, the Seller, by his signature hereto, irrevocably authorises BKB to credit the purchase price of this transaction against his account with BKB (less the Auctioneer's commission and agreed costs), such credit being payment of the purchase price on behalf of the Purchaser.
24. Ownership in the lot or assets is retained until the purchase price has been paid in full by the Purchaser to the Seller or BKB (where the Seller has been paid by BKB), with the provision that the risk in the assets or lot passes to the Purchaser at the fall of the hammer as set out in clause 28.
25. For as long as any amount is owing to BKB by the Purchaser in terms hereof, the Purchaser may not relinquish possession of the said asset, nor may he cede the asset(s) or any of its rights and obligations in terms of this agreement to a third party or otherwise encumber, sell or dispossess the said asset(s) or allow it to become the subject of any right of retention, hypothec, pledge or any encumbrance, whatever the cause thereof may be. BKB is entitled to cede or assign its rights and obligations in terms hereof without affecting its rights of recourse for any monies still due to BKB.
26. The Auctioneer shall pay all monies received from Purchasers into an account from where the Auctioneer shall account to the Seller the net proceeds, being the gross proceeds minus any Advance Amount,

agreed commissions or agreed costs of auction.

27. Neither the purchaser, nor the Seller shall be entitled to apply set off.
28. Each lot shall immediately after the fall of the hammer deemed to be delivered to the Purchaser at which time all risk in and to the lot or asset sold will pass to the Purchaser who will at his own risk and cost remove the lots or assets from the auction terrain. Removal of any assets or loss, however, will not be allowed by the Auctioneer until payment of the purchase price by the Purchaser or acceptable arrangements for payment thereof have been made by the Purchaser with the Auctioneer.
29. The Auctioneer will only be obliged to give reasons of the auction if such reasons are other than the voluntary sale of goods by its owners.
30. The bidders' roll and vendor roll will be available for inspection by registered bidders during normal office hours at the business premises of the Auctioneer.
31. The rules of auction will only be read out at the auction if they are not available to the public at the place of business of the Auctioneer or at the auction facility. In the event of livestock and game auctions, the rules of auction remain unchanged and are in general available at the business premises of the Auctioneer or on the website of the Auctioneer.
32. Under no circumstances will BKB be held liable for any loss or damage of any cause whatsoever albeit direct or indirect damages suffered by anyone if the livestock accepted at the auction premises must be placed under quarantine during or after the auction because of the presence of a livestock disease present. In such an event BKB will have the right to cancel the auction as well as any already complete sales and no party will be entitled to or have a right of recourse against BKB.
33. Any party requiring permits, removal certificate, documentation of identification or any other statutory prescribed document will solely be responsible for obtaining same. Any instructions to an Auctioneer with regards to the loading, transporting, choice of transport contractors, insurance or choice of insurers will executed at the sole risk of the person acquiring such services and the Auctioneer will not be held responsible for any losses whether direct or indirect which may be suffered as a result of giving effect to the instructions by the Auctioneer. Any agreement entered by the Auctioneer with a transport company or insurer is done so in its representative capacity of the Seller or Purchaser. All transport costs or insurance premiums are therefore payable to the Auctioneer in cash except if acceptable alternative arrangements were made with the Auctioneer.
34. Both the Seller and the Purchaser consent to the jurisdiction of the Magistrate's Court as contemplated in Section 45 of Act 32 of 1944 having regard to any action which the Auctioneer may institute against the Purchaser or Seller irrespective of the cause of action. Notwithstanding the aforesaid the Auctioneer will have the sole and absolute discretion to institute action in any High Court with appropriate jurisdiction.
35. Any legal costs that BKB may have or will incur because of the non-compliance of the Purchaser or the Seller shall be recoverable on an scale as between attorney and own client scale, together with collection commission and interest on overdue amounts.
36. No relaxation or indulgence by the Auctioneer must be interpreted as a waiver of any of the Auctioneer's rights in terms hereof. Such relaxation or indulgence must also not be interpreted as a novation hereof.
37. Should any conditions of this agreement be unlawful or become retrospectively unlawful, that unlawful condition shall be deemed to be amended to the extent and in the manner as is necessary to make it lawful or should such an amendment be impossible, the unlawful conditions shall be deemed devisable from the remainder of the conditions of this agreement and pro non script.

BKB



The Trusted Home of Agriculture
Die Betroubare Tuiste van Landbou

**Baie dankie vir u
ondersteuning!**