

FARM IMPLEMENT DIGITAL AUCTION

HOME & HECTARE
REAL ESTATE
At Home with Trust.

BKB
The Trusted Home of Agriculture
Die Betroubare Tuiste van Landbou

Digital Auction Catalogue

Date: Friday, 19 May 2023
Auction starts at 11:00

Auctioneer: Renier Zietsman

BKB South Costal Manager: Jan Erasmus

Marketer: Marinus Meyer

Marketer: Jaco Zietsman

Enquiries: Pieter Ferreira

Contact: 082 491 5182

Contact: 082 924 6096

Contact: 082 542 7446

Contact: 082 373 7889

Contact: 082 491 8554



REGISTER TO BID

VIEW AUCTION
AS GUEST

Please **call** or **WhatsApp** the following number if you require
technical support on the **Digital Auction Platform**:

+27 (0)82 957 8827



EXECUTIVE CATALOGUE SUMMARY

[illegible]

Please note: More listings to be expected.

Detail Information

Location

Year

Manufacturer

Model

Asset Type

Serial Number or VIN

Condition

Hours

Km's

2013

Landini

Landini 5-110H Tractor

Tractors

4 - Good

4970

Comes with

Notes

Operator Station

Cab Type

Transmission Detail: Speed

Transmission Detail: Shift Type

Differential Lock

Notes

Open Cabin

Engine

Fuel Type

Manufacturer

Model

Notes

Diesel

Rear Options

Hitch Type

PTO

Hydraulic Outlets

Notes

Yes

Body Details

Size

Type

Notes

Drive Train

Notes

Weights

Front Wheel Weights

Back Wheel Weights

Front Nose Weights

Notes

Yes

Undercarriage/Suspension

Tyre Manufacturer

Front Tyre Size

Rear Tyre Size

Notes

Accessories

Other

Extensions

Functionality Tests

Start

Drives Forward

Drives Backwards

Brake Pedal Functions

YES

YES

YES

YES

Functional Test Notes

General

The Detailed Equipment Information is limited in scope, and BKB Auctioneers has not inspected any aspects or components of the equipment other than those expressly set forth herein. Unless expressly stated, we make no representations or warranties, express or implied, concerning the equipment or its components, including without limitation any representations or warranties concerning functionality, conformity or compliance with any safety standard or requirement of any applicable authority or regulatory body, fitness for any particular purpose, or merchantability. You are strongly advised to perform your own detailed inspection of the equipment prior to

Functions

ThEquipment is not tested under load or operated in all available gears. We make no representation or warranty that equipment is operating in accordance with manufacturers' specifications. No inspection has been performed with respect to any functionality aspect other than those expressly included herein. Only select photos have been provided for individual undercarriage components, and may not be indicative of the condition of the entire undercarriage as a whole.

Dimensions

Measurements are given as an estimate only. Actual loaded dimensions may vary based on truck/trailer height and the loaded machine configuration/position. It is the buyer's responsibility to measure all loads before leaving our auction site to ensure the load is safe for transport. All measurements should be verified by the buyer. DO NOT rely on these measurements for transportation purposes.



Supporting Documents

Certificate of Registration

Vehicle Licence Certificate

Service Record

Other

YES

Lot Nr.		2		Date		19 May 2023	
Detail Information							
Location							
Year		2018					
Manufacturer		Landini					
Model		Landini Solis 75 tractor with detachables					
Asset Type		Tractor					
Serial Number or VIN							
Condition		5 - Very Good					
Hours		430					
Km's							
Comes with		Detachable Sigma 4 Backhoe and Detachable					
Notes							
Operator Station							
Cab Type		Open Cabin					
Transmission Detail: Speed							
Transmission Detail: Shift Type							
Differential Lock							
Notes							
Engine							
Fuel Type		Diesel					
Manufacturer							
Model							
Notes							
Rear Options							
Hitch Type							
PTO		Yes					
Hydraulic Outlets		Yes					
Notes							
Body Details							
Size							
Type							
Notes							
Drive Train							
Notes							
Weights							
Front Wheel Weights							
Back Wheel Weights							
Front Nose Weights							
Notes							
Undercarriage/Suspension							
Tyre Manufacturer							
Front Tyre Size							
Rear Tyre Size							
Notes							
Accessories							
Other							
Extensions							
Functionality Tests							
Start		YES					
Drives Forward		YES					
Drives Backwards		YES					
Brake Pedal Functions		YES					
Functional Test Notes							
Supporting Documents							
Certificate of Registration							
Vehicle Licence Certificate							
Service Record							
Other							



General

The Detailed Equipment Information is limited in scope, and BKB Auctioneers has not inspected any aspects or components of the equipment other than those expressly set forth herein. Unless expressly stated, we make no representations or warranties, express or implied, concerning the equipment or its components, including without limitation any representations or warranties concerning functionality, conformity or compliance with any safety standard or requirement of any applicable authority or regulatory body, fitness for any particular purpose, or merchantability. You are strongly advised to perform your own detailed inspection of the equipment prior to Functions

ThEquipment is not tested under load or operated in all available gears. We make no representation or warranty that equipment is operating in accordance with manufacturers' specifications. No inspection has been performed with respect to any functionality aspect other than those expressly included herein. Only select photos have been provided for individual undercarriage components, and may not be indicative of the condition of the entire undercarriage as a whole.

Dimensions

Measurements are given as an estimate only. Actual loaded dimensions may vary based on truck/trailer height and the loaded machine configuration/position. It is the buyer's responsibility to measure all loads before leaving our auction site to ensure the load is safe for transport. All measurements should be verified by the buyer. DO NOT rely on these measurements for transportation purposes.

Lot Nr.		3		Date		19 May 2023	
Detail Information							
Location							
Year							
Manufacturer		Ford					
Model		Ford 6610 tractor					
Asset Type		Tractor					
Serial Number or VIN							
Condition		4 - Good					
Hours		490					
Km's							
Comes with		"Stootlem"					
Notes							
Operator Station							
Cab Type		Open Cabin					
Transmission Detail: Speed							
Transmission Detail: Shift Type		Manual					
Differential Lock							
Notes							
Engine							
Fuel Type		Diesel					
Manufacturer							
Model							
Notes							
Rear Options							
Hitch Type							
PTO		Yes					
Hydraulic Outlets		Yes					
Notes							
Body Details							
Size							
Type							
Notes							
Drive Train							
Notes							
Weights							
Front Wheel Weights							
Back Wheel Weights							
Front Nose Weights							
Notes							
Undercarriage/Suspension							
Tyre Manufacturer							
Front Tyre Size							
Rear Tyre Size							
Notes							
Accessories							
Other							
Extensions							
Functionality Tests							
Start		YES					
Drives Forward		YES					
Drives Backwards		YES					
Brake Pedal Functions		YES					
Functional Test Notes							
Supporting Documents							
Certificate of Registration							
Vehicle Licence Certificate							
Service Record							
Other							



General

The Detailed Equipment Information is limited in scope, and BKB Auctioneers has not inspected any aspects or components of the equipment other than those expressly set forth herein. Unless expressly stated, we make no representations or warranties, express or implied, concerning the equipment or its components, including without limitation any representations or warranties concerning functionality, conformity or compliance with any safety standard or requirement of any applicable authority or regulatory body, fitness for any particular purpose, or merchantability. You are strongly advised to perform your own detailed inspection of

Functions

The Equipment is not tested under load or operated in all available gears. We make no representation or warranty that equipment is operating in accordance with manufacturers' specifications. No inspection has been performed with respect to any functionality aspect other than those expressly included herein. Only select photos have been provided for individual undercarriage components, and may not be indicative of the condition of the entire undercarriage as a whole.

Dimensions

Measurements are given as an estimate only. Actual loaded dimensions may vary based on truck/trailer height and the loaded machine configuration/position. It is the buyer's responsibility to measure all loads before leaving our auction site to ensure the load is safe for transport. All measurements should be verified by the buyer. DO NOT rely on these measurements for transportation purposes.

Detail Information

Location	
Year	
Manufacturer	Hyster
Model	Hyster 2.50 forklifter
Asset Type	Other Agri Equipment
Serial Number or VIN	
Condition	4 - Good
Hours	
Km's	
Comes with	
Notes	

Operator Station

Cab Type	Open
Transmission Detail: Speed	
Transmission Detail: Shift Type	Manual
Differential Lock	
Notes	

Engine

Fuel Type	Diesel
Manufacturer	
Model	
Notes	

Rear Options

Hitch Type	
PTO	
Hydraulic Outlets	
Notes	

Body Details

Size	
Type	
Notes	

Drive Train

Notes	
-------	--

Weights

Front Wheel Weights	
Back Wheel Weights	
Front Nose Weights	
Notes	

Undercarriage/Suspension

Tyre Manufacturer	
Front Tyre Size	
Rear Tyre Size	
Notes	

Accessories

Other	
Extensions	

Functionality Tests

Start	YES
Drives Forward	YES
Drives Backwards	YES
Brake Pedal Functions	YES
Functional Test Notes	

Supporting Documents

Certificate of Registration	
Vehicle Licence Sertificate	
Service Record	
Other	



General

The Detailed Equipment Information is limited in scope, and BKB Auctioneers has not inspected any aspects or components of the equipment other than those expressly set forth herein. Unless expressly stated, we make no representations or warranties, express or implied, concerning the equipment or its components, including without limitation any representations or warranties concerning functionality, conformity or compliance with any safety standard or requirement of any applicable authority or regulatory body, fitness for any particular purpose, or merchantability. You are strongly advised to perform your own detailed inspection of

Functions

ThEquipment is not tested under load or operated in all available gears. We make no representation or warranty that equipment is operating in accordance with manufacturers' specifications. No inspection has been performed with respect to any functionality aspect other than those expressly included herein. Only select photos have been provided for individual undercarriage components, and may not be indicative of the condition of the entire undercarriage as a whole.

Dimensions

Measurements are given as an estimate only. Actual loaded dimensions may vary based on truck/trailer height and the loaded machine configuration/position. It is the buyer's responsibility to measure all loads before leaving our auction site to ensure the load is safe for transport. All measurements should be verified by the buyer. DO NOT rely on these measurements for transportation purposes.

Detail Information

Location	
Year	
Manufacturer	Toyota
Model	Toyota Dyna Truck
Asset Type	Transportation
Serial Number or VIN	
Condition	4 - Good
Hours	
Km's	29238
Comes with	
Notes	

Operator Station

Cab Type	
Transmission Detail: Speed	
Transmission Detail: Shift Type	Manual
Differential Lock	
Notes	

Engine

Fuel Type	
Manufacturer	
Model	
Notes	

Rear Options

Hitch Type	
PTO	
Hydraulic Outlets	
Notes	

Body Details

Size	
Type	
Notes	

Drive Train

Notes	
-------	--

Weights

Front Wheel Weights	
Back Wheel Weights	
Front Nose Weights	
Notes	

Undercarriage/Suspension

Tyre Manufacturer	
Front Tyre Size	
Rear Tyre Size	
Notes	

Accessories

Other	
Extensions	

Functionality Tests

Start	YES
Drives Forward	YES
Drives Backwards	YES
Brake Pedal Functions	YES

Functional Test Notes

General

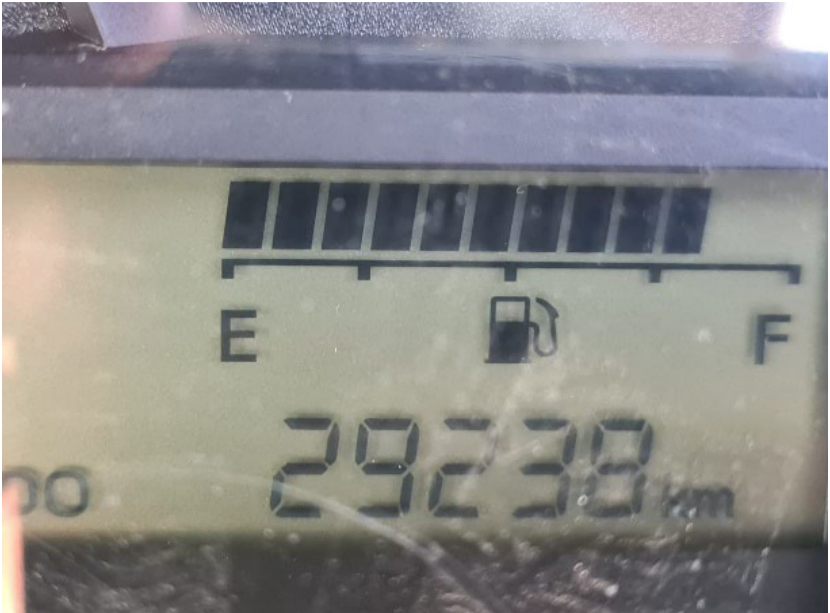
The Detailed Equipment Information is limited in scope, and BKB Auctioneers has not inspected any aspects or components of the equipment other than those expressly set forth herein. Unless expressly stated, we make no representations or warranties, express or implied, concerning the equipment or its components, including without limitation any representations or warranties concerning functionality, conformity or compliance with any safety standard or requirement of any applicable authority or regulatory body, fitness for any particular purpose, or merchantability. You are strongly advised to perform your own detailed inspection of the equipment prior to

Functions

ThEquipment is not tested under load or operated in all available gears. We make no representation or warranty that equipment is operating in accordance with manufacturers' specifications. No inspection has been performed with respect to any functionality aspect other than those expressly included herein. Only select photos have been provided for individual undercarriage components, and may not be indicative of the condition of the entire undercarriage as a whole.

Dimensions

Measurements are given as an estimate only. Actual loaded dimensions may vary based on truck/trailer height and the loaded machine configuration/position. It is the buyer's responsibility to measure all loads before leaving our auction site to ensure the load is safe for transport. All measurements should be verified by the buyer. DO NOT rely on these measurements for transportation purposes.



Supporting Documents

Certificate of Registration	
Vehicle Licence Certificate	
Service Record	YES
Other	

Detail Information

Location

Year

Manufacturer

Model

Asset Type

Serial Number or VIN

Condition

Hours

Km's

Comes with

Notes

Operator Station

Cab Type

Transmission Detail: Speed

Transmission Detail: Shift Type

Differential Lock

Notes

Engine

Fuel Type

Manufacturer

Model

Notes

Rear Options

Hitch Type

PTO

Hydraulic Outlets

Notes

Body Details

Size

Type

Notes

Drive Train

Notes

Weights

Front Wheel Weights

Back Wheel Weights

Front Nose Weights

Notes

Undercarriage/Suspension

Tyre Manufacturer

Front Tyre Size

Rear Tyre Size

Notes

Accessories

Other

Extensions

Functionality Tests

Start

Drives Forward

Drives Backwards

Brake Pedal Functions

Functional Test Notes

General

The Detailed Equipment Information is limited in scope, and BKB Auctioneers has not inspected any aspects or components of the equipment other than those expressly set forth herein. Unless expressly stated, we make no representations or warranties, express or implied, concerning the equipment or its components, including without limitation any representations or warranties concerning functionality, conformity or compliance with any safety standard or requirement of any applicable authority or regulatory body, fitness for any particular purpose, or merchantability. You are strongly advised to perform your own detailed inspection of the equipment prior to

Functions

ThEquipment is not tested under load or operated in all available gears. We make no representation or warranty that equipment is operating in accordance with manufacturers' specifications. No inspection has been performed with respect to any functionality aspect other than those expressly included herein. Only select photos have been provided for individual undercarriage components, and may not be indicative of the condition of the entire undercarriage as a whole.

Dimensions

Measurements are given as an estimate only. Actual loaded dimensions may vary based on truck/trailer height and the loaded machine configuration/position. It is the buyer's responsibility to measure all loads before leaving our auction site to ensure the load is safe for transport. All measurements should be verified by the buyer. DO NOT rely on these measurements for transportation purposes.



Supporting Documents

Certificate of Registration

Vehicle Licence Certificate

Service Record

Other

Detail Information

Location

Year

Manufacturer

Model

Asset Type

Serial Number or VIN

Condition

Hours

Km's

Comes with

Notes

Home Build

Flatbed Trailor

Trailer

4 - Good

Hidrolic Tipper

Operator Station

Cab Type

Transmission Detail: Speed

Transmission Detail: Shift Type

Differential Lock

Notes

Engine

Fuel Type

Manufacturer

Model

Notes

Rear Options

Hitch Type

PTO

Hydraulic Outlets

Notes

Body Details

Size

Type

Notes

Drive Train

Notes

Weights

Front Wheel Weights

Back Wheel Weights

Front Nose Weights

Notes

Undercarriage/Suspension

Tyre Manufacturer

Front Tyre Size

Rear Tyre Size

Notes

Accessories

Other

Extensions

Functionality Tests

Start

Drives Forward

Drives Backwards

Brake Pedal Functions

Functional Test Notes

General

The Detailed Equipment Information is limited in scope, and BKB Auctioneers has not inspected any aspects or components of the equipment other than those expressly set forth herein. Unless expressly stated, we make no representations or warranties, express or implied, concerning the equipment or its components, including without limitation any representations or warranties concerning functionality, conformity or compliance with any safety standard or requirement of any applicable authority or regulatory body, fitness for any particular purpose, or merchantability. You are strongly advised to perform your own detailed inspection of the equipment prior to

Functions

ThEquipment is not tested under load or operated in all available gears. We make no representation or warranty that equipment is operating in accordance with manufacturers' specifications. No inspection has been performed with respect to any functionality aspect other than those expressly included herein. Only select photos have been provided for individual undercarriage components, and may not be indicative of the condition of the entire undercarriage as a whole.

Dimensions

Measurements are given as an estimate only. Actual loaded dimensions may vary based on truck/trailer height and the loaded machine configuration/position. It is the buyer's responsibility to measure all loads before leaving our auction site to ensure the load is safe for transport. All measurements should be verified by the buyer. DO NOT rely on these measurements for transportation purposes.



Supporting Documents

Certificate of Registration

Vehicle Licence Certificate

Service Record

Other

Detail Information

Location	
Year	
Manufacturer	Home Build
Model	Disc (20 discs)
Asset Type	Seeding and Tillage Equipment
Serial Number or VIN	
Condition	5 - Very Good
Hours	
Km's	
Comes with	
Notes	

Operator Station

Cab Type	
Transmission Detail: Speed	
Transmission Detail: Shift Type	
Differential Lock	
Notes	

Engine

Fuel Type	
Manufacturer	
Model	
Notes	

Rear Options

Hitch Type	
PTO	
Hydraulic Outlets	
Notes	

Body Details

Size	
Type	
Notes	

Drive Train

Notes	
-------	--

Weights

Front Wheel Weights	
Back Wheel Weights	
Front Nose Weights	
Notes	

Undercarriage/Suspension

Tyre Manufacturer	
Front Tyre Size	
Rear Tyre Size	
Notes	

Accessories

Other	
Extensions	

Functionality Tests

Start	
Drives Forward	
Drives Backwards	
Brake Pedal Functions	

Functional Test Notes

General

The Detailed Equipment Information is limited in scope, and BKB Auctioneers has not inspected any aspects or components of the equipment other than those expressly set forth herein. Unless expressly stated, we make no representations or warranties, express or implied, concerning the equipment or its components, including without limitation any representations or warranties concerning functionality, conformity or compliance with any safety standard or requirement of any applicable authority or regulatory body, fitness for any particular purpose, or merchantability. You are strongly advised to perform your own detailed inspection of the equipment prior to

Functions

ThEquipment is not tested under load or operated in all available gears. We make no representation or warranty that equipment is operating in accordance with manufacturers' specifications. No inspection has been performed with respect to any functionality aspect other than those expressly included herein. Only select photos have been provided for individual undercarriage components, and may not be indicative of the condition of the entire undercarriage as a whole.

Dimensions

Measurements are given as an estimate only. Actual loaded dimensions may vary based on truck/trailer height and the loaded machine configuration/position. It is the buyer's responsibility to measure all loads before leaving our auction site to ensure the load is safe for transport. All measurements should be verified by the buyer. DO NOT rely on these measurements for transportation purposes.



Supporting Documents

Certificate of Registration	
Vehicle Licence Certificate	
Service Record	
Other	

Detail Information

Location	
Year	
Manufacturer	BPI
Model	BPI Fertilizer Spreader
Asset Type	Seeding and Tillage Equipment
Serial Number or VIN	
Condition	4 - Good
Hours	
Km's	
Comes with	
Notes	

Operator Station

Cab Type	
Transmission Detail: Speed	
Transmission Detail: Shift Type	
Differential Lock	
Notes	

Engine

Fuel Type	
Manufacturer	
Model	
Notes	

Rear Options

Hitch Type	
PTO	
Hydraulic Outlets	
Notes	

Body Details

Size	
Type	
Notes	

Drive Train

Notes	
-------	--

Weights

Front Wheel Weights	
Back Wheel Weights	
Front Nose Weights	
Notes	

Undercarriage/Suspension

Tyre Manufacturer	
Front Tyre Size	
Rear Tyre Size	
Notes	

Accessories

Other	
Extensions	

Functionality Tests

Start	
Drives Forward	
Drives Backwards	
Brake Pedal Functions	

Functional Test Notes

General

The Detailed Equipment Information is limited in scope, and BKB Auctioneers has not inspected any aspects or components of the equipment other than those expressly set forth herein. Unless expressly stated, we make no representations or warranties, express or implied, concerning the equipment or its components, including without limitation any representations or warranties concerning functionality, conformity or compliance with any safety standard or requirement of any applicable authority or regulatory body, fitness for any particular purpose, or merchantability. You are strongly advised to perform your own detailed inspection of the equipment prior to

Functions

ThEquipment is not tested under load or operated in all available gears. We make no representation or warranty that equipment is operating in accordance with manufacturers' specifications. No inspection has been performed with respect to any functionality aspect other than those expressly included herein. Only select photos have been provided for individual undercarriage components, and may not be indicative of the condition of the entire undercarriage as a whole.

Dimensions

Measurements are given as an estimate only. Actual loaded dimensions may vary based on truck/trailer height and the loaded machine configuration/position. It is the buyer's responsibility to measure all loads before leaving our auction site to ensure the load is safe for transport. All measurements should be verified by the buyer. DO NOT rely on these measurements for transportation purposes.



Supporting Documents

Certificate of Registration	
Vehicle Licence Certificate	
Service Record	
Other	

Detail Information

Location	
Year	
Manufacturer	Staalland
Model	Staalland Fertilizer Spreader
Asset Type	Seeding and Tillage Equipment
Serial Number or VIN	
Condition	3 - Fair
Hours	
Km's	
Comes with	
Notes	

Operator Station

Cab Type	
Transmission Detail: Speed	
Transmission Detail: Shift Type	
Differential Lock	
Notes	

Engine

Fuel Type	
Manufacturer	
Model	
Notes	

Rear Options

Hitch Type	
PTO	
Hydraulic Outlets	
Notes	

Body Details

Size	
Type	
Notes	

Drive Train

Notes	
-------	--

Weights

Front Wheel Weights	
Back Wheel Weights	
Front Nose Weights	
Notes	

Undercarriage/Suspension

Tyre Manufacturer	
Front Tyre Size	
Rear Tyre Size	
Notes	

Accessories

Other	
Extensions	

Functionality Tests

Start	
Drives Forward	
Drives Backwards	
Brake Pedal Functions	

Functional Test Notes

General

The Detailed Equipment Information is limited in scope, and BKB Auctioneers has not inspected any aspects or components of the equipment other than those expressly set forth herein. Unless expressly stated, we make no representations or warranties, express or implied, concerning the equipment or its components, including without limitation any representations or warranties concerning functionality, conformity or compliance with any safety standard or requirement of any applicable authority or regulatory body, fitness for any particular purpose, or merchantability. You are strongly advised to perform your own detailed inspection of the equipment prior to

Functions

ThEquipment is not tested under load or operated in all available gears. We make no representation or warranty that equipment is operating in accordance with manufacturers' specifications. No inspection has been performed with respect to any functionality aspect other than those expressly included herein. Only select photos have been provided for individual undercarriage components, and may not be indicative of the condition of the entire undercarriage as a whole.

Dimensions

Measurements are given as an estimate only. Actual loaded dimensions may vary based on truck/trailer height and the loaded machine configuration/position. It is the buyer's responsibility to measure all loads before leaving our auction site to ensure the load is safe for transport. All measurements should be verified by the buyer. DO NOT rely on these measurements for transportation purposes.



Supporting Documents

Certificate of Registration	
Vehicle Licence Certificate	
Service Record	
Other	

Detail Information

Location	
Year	
Manufacturer	Welger
Model	Welger Baler RP200
Asset Type	Hay & Forage Equipment
Serial Number or VIN	
Condition	4 - Good
Hours	
Km's	
Comes with	
Notes	

Operator Station

Cab Type	
Transmission Detail: Speed	
Transmission Detail: Shift Type	
Differential Lock	
Notes	

Engine

Fuel Type	
Manufacturer	
Model	
Notes	

Rear Options

Hitch Type	
PTO	
Hydraulic Outlets	
Notes	

Body Details

Size	
Type	
Notes	

Drive Train

Notes	
-------	--

Weights

Front Wheel Weights	
Back Wheel Weights	
Front Nose Weights	
Notes	

Undercarriage/Suspension

Tyre Manufacturer	
Front Tyre Size	
Rear Tyre Size	
Notes	

Accessories

Other	
Extensions	

Functionality Tests

Start	
Drives Forward	
Drives Backwards	
Brake Pedal Functions	

Functional Test Notes

General

The Detailed Equipment Information is limited in scope, and BKB Auctioneers has not inspected any aspects or components of the equipment other than those expressly set forth herein. Unless expressly stated, we make no representations or warranties, express or implied, concerning the equipment or its components, including without limitation any representations or warranties concerning functionality, conformity or compliance with any safety standard or requirement of any applicable authority or regulatory body, fitness for any particular purpose, or merchantability. You are strongly advised to perform your own detailed inspection of the equipment prior to

Functions

ThEquipment is not tested under load or operated in all available gears. We make no representation or warranty that equipment is operating in accordance with manufacturers' specifications. No inspection has been performed with respect to any functionality aspect other than those expressly included herein. Only select photos have been provided for individual undercarriage components, and may not be indicative of the condition of the entire undercarriage as a whole.

Dimensions

Measurements are given as an estimate only. Actual loaded dimensions may vary based on truck/trailer height and the loaded machine configuration/position. It is the buyer's responsibility to measure all loads before leaving our auction site to ensure the load is safe for transport. All measurements should be verified by the buyer. DO NOT rely on these measurements for transportation purposes.



Supporting Documents

Certificate of Registration	
Vehicle Licence Certificate	
Service Record	
Other	

Detail Information

Location	
Year	
Manufacturer	Strautmann
Model	Strautmann Verti-mixer 500
Asset Type	Hay & Forage Equipment
Serial Number or VIN	
Condition	5 - Very Good
Hours	
Km's	
Comes with	
Notes	

Operator Station

Cab Type	
Transmission Detail: Speed	
Transmission Detail: Shift Type	
Differential Lock	
Notes	

Engine

Fuel Type	
Manufacturer	
Model	
Notes	

Rear Options

Hitch Type	
PTO	
Hydraulic Outlets	
Notes	

Body Details

Size	
Type	
Notes	

Drive Train

Notes	
-------	--

Weights

Front Wheel Weights	
Back Wheel Weights	
Front Nose Weights	
Notes	

Undercarriage/Suspension

Tyre Manufacturer	
Front Tyre Size	
Rear Tyre Size	
Notes	

Accessories

Other	
Extensions	

Functionality Tests

Start	
Drives Forward	
Drives Backwards	
Brake Pedal Functions	

Functional Test Notes

General

The Detailed Equipment Information is limited in scope, and BKB Auctioneers has not inspected any aspects or components of the equipment other than those expressly set forth herein. Unless expressly stated, we make no representations or warranties, express or implied, concerning the equipment or its components, including without limitation any representations or warranties concerning functionality, conformity or compliance with any safety standard or requirement of any applicable authority or regulatory body, fitness for any particular purpose, or merchantability. You are strongly advised to perform your own detailed inspection of the equipment prior to

Functions

ThEquipment is not tested under load or operated in all available gears. We make no representation or warranty that equipment is operating in accordance with manufacturers' specifications. No inspection has been performed with respect to any functionality aspect other than those expressly included herein. Only select photos have been provided for individual undercarriage components, and may not be indicative of the condition of the entire undercarriage as a whole.

Dimensions

Measurements are given as an estimate only. Actual loaded dimensions may vary based on truck/trailer height and the loaded machine configuration/position. It is the buyer's responsibility to measure all loads before leaving our auction site to ensure the load is safe for transport. All measurements should be verified by the buyer. DO NOT rely on these measurements for transportation purposes.



Supporting Documents

Certificate of Registration	
Vehicle Licence Certificate	
Service Record	
Other	

Detail Information

Location

Year

Manufacturer

Model

Asset Type

Serial Number or VIN

Condition

Hours

Km's

Comes with

Notes

Home Build 3.9m

Auger

Hay & Forage Equipment

5 - Very Good

Operator Station

Cab Type

Transmission Detail: Speed

Transmission Detail: Shift Type

Differential Lock

Notes

Engine

Fuel Type

Manufacturer

Model

Notes

Rear Options

Hitch Type

PTO

Hydraulic Outlets

Notes

Body Details

Size

Type

Notes

Drive Train

Notes

Weights

Front Wheel Weights

Back Wheel Weights

Front Nose Weights

Notes

Undercarriage/Suspension

Tyre Manufacturer

Front Tyre Size

Rear Tyre Size

Notes

Accessories

Other

Extensions

Functionality Tests

Start

Drives Forward

Drives Backwards

Brake Pedal Functions

Functional Test Notes



Supporting Documents

Certificate of Registration

Vehicle Licence Certificate

Service Record

Other

General

The Detailed Equipment Information is limited in scope, and BKB Auctioneers has not inspected any aspects or components of the equipment other than those expressly set forth herein. Unless expressly stated, we make no representations or warranties, express or implied, concerning the equipment or its components, including without limitation any representations or warranties concerning functionality, conformity or compliance with any safety standard or requirement of any applicable authority or regulatory body, fitness for any particular purpose, or merchantability. You are strongly advised to perform your own detailed inspection of the equipment prior to

Functions

ThEquipment is not tested under load or operated in all available gears. We make no representation or warranty that equipment is operating in accordance with manufacturers' specifications. No inspection has been performed with respect to any functionality aspect other than those expressly included herein. Only select photos have been provided for individual undercarriage components, and may not be indicative of the condition of the entire undercarriage as a whole.

Dimensions

Measurements are given as an estimate only. Actual loaded dimensions may vary based on truck/trailer height and the loaded machine configuration/position. It is the buyer's responsibility to measure all loads before leaving our auction site to ensure the load is safe for transport. All measurements should be verified by the buyer. DO NOT rely on these measurements for transportation purposes.

Detail Information

Location

Year

Manufacturer

Model

Asset Type

Serial Number or VIN

Condition

Hours

Km's

Comes with

Notes

Operator Station

Cab Type

Transmission Detail: Speed

Transmission Detail: Shift Type

Differential Lock

Notes

Engine

Fuel Type

Manufacturer

Model

Notes

Rear Options

Hitch Type

PTO

Hydraulic Outlets

Notes

Body Details

Size

Type

Notes

Drive Train

Notes

Weights

Front Wheel Weights

Back Wheel Weights

Front Nose Weights

Notes

Undercarriage/Suspension

Tyre Manufacturer

Front Tyre Size

Rear Tyre Size

Notes

Accessories

Other

Extensions

Functionality Tests

Start

Drives Forward

Drives Backwards

Brake Pedal Functions

Functional Test Notes



Supporting Documents

Certificate of Registration

Vehicle Licence Certificate

Service Record

Other

Detail Information

Location	
Year	
Manufacturer	
Model	Weedsprayer
Asset Type	Seeding and Tillage Equipment
Serial Number or VIN	
Condition	5 - Very Good
Hours	
Km's	
Comes with	
Notes	

Operator Station

Cab Type	
Transmission Detail: Speed	
Transmission Detail: Shift Type	
Differential Lock	
Notes	

Engine

Fuel Type	
Manufacturer	
Model	
Notes	

Rear Options

Hitch Type	
PTO	
Hydraulic Outlets	
Notes	

Body Details

Size	
Type	
Notes	

Drive Train

Notes	
-------	--

Weights

Front Wheel Weights	
Back Wheel Weights	
Front Nose Weights	
Notes	

Undercarriage/Suspension

Tyre Manufacturer	
Front Tyre Size	
Rear Tyre Size	
Notes	

Accessories

Other	
Extensions	

Functionality Tests

Start	
Drives Forward	
Drives Backwards	
Brake Pedal Functions	

Functional Test Notes

General

The Detailed Equipment Information is limited in scope, and BKB Auctioneers has not inspected any aspects or components of the equipment other than those expressly set forth herein. Unless expressly stated, we make no representations or warranties, express or implied, concerning the equipment or its components, including without limitation any representations or warranties concerning functionality, conformity or compliance with any safety standard or requirement of any applicable authority or regulatory body, fitness for any particular purpose, or merchantability. You are strongly advised to perform your own detailed inspection of the equipment prior to

Functions

ThEquipment is not tested under load or operated in all available gears. We make no representation or warranty that equipment is operating in accordance with manufacturers' specifications. No inspection has been performed with respect to any functionality aspect other than those expressly included herein. Only select photos have been provided for individual undercarriage components, and may not be indicative of the condition of the entire undercarriage as a whole.

Dimensions

Measurements are given as an estimate only. Actual loaded dimensions may vary based on truck/trailer height and the loaded machine configuration/position. It is the buyer's responsibility to measure all loads before leaving our auction site to ensure the load is safe for transport. All measurements should be verified by the buyer. DO NOT rely on these measurements for transportation purposes.



Supporting Documents

Certificate of Registration	
Vehicle Licence Certificate	
Service Record	
Other	

Detail Information

Location	
Year	
Manufacturer	
Model	Mobile coldroom
Asset Type	Other Agri Equipment
Serial Number or VIN	
Condition	5 - Very Good
Hours	
Km's	
Comes with	
Notes	Dimensions-2.43 x 1.9 x 2.45 m

Operator Station

Cab Type	
Transmission Detail: Speed	
Transmission Detail: Shift Type	
Differential Lock	
Notes	

Engine

Fuel Type	
Manufacturer	
Model	
Notes	

Rear Options

Hitch Type	
PTO	
Hydraulic Outlets	
Notes	

Body Details

Size	
Type	
Notes	

Drive Train

Notes	
-------	--

Weights

Front Wheel Weights	
Back Wheel Weights	
Front Nose Weights	
Notes	

Undercarriage/Suspension

Tyre Manufacturer	
Front Tyre Size	
Rear Tyre Size	
Notes	

Accessories

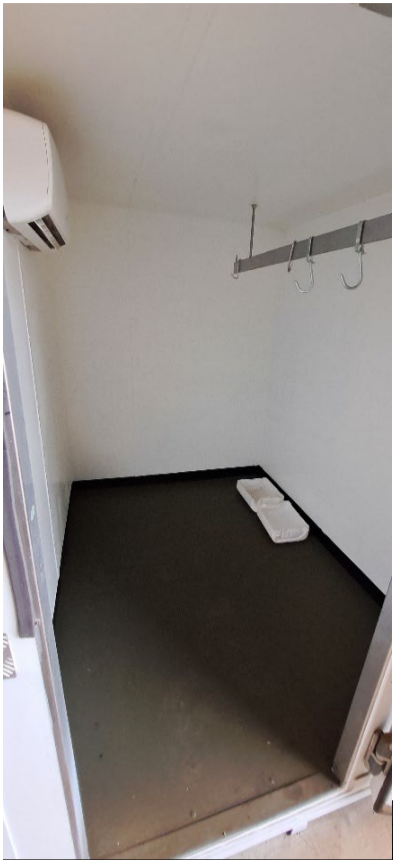
Other	
Extensions	

Functionality Tests

Start	
Drives Forward	
Drives Backwards	
Brake Pedal Functions	
Functional Test Notes	

Supporting Documents

Certificate of Registration	
Vehicle Licence Certificate	
Service Record	
Other	



General

The Detailed Equipment Information is limited in scope, and BKB Auctioneers has not inspected any aspects or components of the equipment other than those expressly set forth herein. Unless expressly stated, we make no representations or warranties, express or implied, concerning the equipment or its components, including without limitation any representations or warranties concerning functionality, conformity or compliance with any safety standard or requirement of any applicable authority or regulatory body, fitness for any particular purpose, or merchantability. You are strongly advised to perform your own detailed inspection of the equipment prior to

Functions

ThEquipment is not tested under load or operated in all available gears. We make no representation or warranty that equipment is operating in accordance with manufacturers' specifications. No inspection has been performed with respect to any functionality aspect other than those expressly included herein. Only select photos have been provided for individual undercarriage components, and may not be indicative of the condition of the entire undercarriage as a whole.

Dimensions

Measurements are given as an estimate only. Actual loaded dimensions may vary based on truck/trailer height and the loaded machine configuration/position. It is the buyer's responsibility to measure all loads before leaving our auction site to ensure the load is safe for transport. All measurements should be verified by the buyer. DO NOT rely on these measurements for transportation purposes.

Detail Information

Location

Year

Manufacturer

Model

Asset Type

Serial Number or VIN

Condition

Hours

Km's

Comes with

Notes

Chisel Plough

Seeding and Tillage Equipment

5 - Very Good

Chisel Plough (7 tine)

Operator Station

Cab Type

Transmission Detail: Speed

Transmission Detail: Shift Type

Differential Lock

Notes

Engine

Fuel Type

Manufacturer

Model

Notes

Rear Options

Hitch Type

PTO

Hydraulic Outlets

Notes

Body Details

Size

Type

Notes

Drive Train

Notes

Weights

Front Wheel Weights

Back Wheel Weights

Front Nose Weights

Notes

Undercarriage/Suspension

Tyre Manufacturer

Front Tyre Size

Rear Tyre Size

Notes

Accessories

Other

Extensions

Functionality Tests

Start

Drives Forward

Drives Backwards

Brake Pedal Functions

Functional Test Notes



Supporting Documents

Certificate of Registration

Vehicle Licence Certificate

Service Record

Other

General

The Detailed Equipment Information is limited in scope, and BKB Auctioneers has not inspected any aspects or components of the equipment other than those expressly set forth herein. Unless expressly stated, we make no representations or warranties, express or implied, concerning the equipment or its components, including without limitation any representations or warranties concerning functionality, conformity or compliance with any safety standard or requirement of any applicable authority or regulatory body, fitness for any particular purpose, or merchantability. You are strongly advised to perform your own detailed inspection of the equipment prior to

Functions

ThEquipment is not tested under load or operated in all available gears. We make no representation or warranty that equipment is operating in accordance with manufacturers' specifications. No inspection has been performed with respect to any functionality aspect other than those expressly included herein. Only select photos have been provided for individual undercarriage components, and may not be indicative of the condition of the entire undercarriage as a whole.

Dimensions

Measurements are given as an estimate only. Actual loaded dimensions may vary based on truck/trailer height and the loaded machine configuration/position. It is the buyer's responsibility to measure all loads before leaving our auction site to ensure the load is safe for transport. All measurements should be verified by the buyer. DO NOT rely on these measurements for transportation purposes.

Detail Information

Location	
Year	
Manufacturer	
Model	Ripper
Asset Type	Seeding and Tillage Equipment
Serial Number or VIN	
Condition	5 - Very Good
Hours	
Km's	
Comes with	
Notes	Ripper (5 tine)

Operator Station

Cab Type	
Transmission Detail: Speed	
Transmission Detail: Shift Type	
Differential Lock	
Notes	

Engine

Fuel Type	
Manufacturer	
Model	
Notes	

Rear Options

Hitch Type	
PTO	
Hydraulic Outlets	
Notes	

Body Details

Size	
Type	
Notes	

Drive Train

Notes	
-------	--

Weights

Front Wheel Weights	
Back Wheel Weights	
Front Nose Weights	
Notes	

Undercarriage/Suspension

Tyre Manufacturer	
Front Tyre Size	
Rear Tyre Size	
Notes	

Accessories

Other	
Extensions	

Functionality Tests

Start	
Drives Forward	
Drives Backwards	
Brake Pedal Functions	

Functional Test Notes

General

The Detailed Equipment Information is limited in scope, and BKB Auctioneers has not inspected any aspects or components of the equipment other than those expressly set forth herein. Unless expressly stated, we make no representations or warranties, express or implied, concerning the equipment or its components, including without limitation any representations or warranties concerning functionality, conformity or compliance with any safety standard or requirement of any applicable authority or regulatory body, fitness for any particular purpose, or merchantability. You are strongly advised to perform your own detailed inspection of the equipment prior to

Functions

ThEquipment is not tested under load or operated in all available gears. We make no representation or warranty that equipment is operating in accordance with manufacturers' specifications. No inspection has been performed with respect to any functionality aspect other than those expressly included herein. Only select photos have been provided for individual undercarriage components, and may not be indicative of the condition of the entire undercarriage as a whole.

Dimensions

Measurements are given as an estimate only. Actual loaded dimensions may vary based on truck/trailer height and the loaded machine configuration/position. It is the buyer's responsibility to measure all loads before leaving our auction site to ensure the load is safe for transport. All measurements should be verified by the buyer. DO NOT rely on these measurements for transportation purposes.



Supporting Documents

Certificate of Registration	
Vehicle Licence Certificate	
Service Record	
Other	

Detail Information

Location

Year

Manufacturer

Model

Asset Type

Serial Number or VIN

Condition

Hours

Km's

Comes with

Notes

Operator Station

Cab Type

Transmission Detail: Speed

Transmission Detail: Shift Type

Differential Lock

Notes

Engine

Fuel Type

Manufacturer

Model

Notes

Rear Options

Hitch Type

PTO

Hydraulic Outlets

Notes

Body Details

Size

Type

Notes

Drive Train

Notes

Weights

Front Wheel Weights

Back Wheel Weights

Front Nose Weights

Notes

Undercarriage/Suspension

Tyre Manufacturer

Front Tyre Size

Rear Tyre Size

Notes

Accessories

Other

Extensions



Supporting Documents

Certificate of Registration

Vehicle Licence Certificate

Service Record

Other

Functionality Tests

Start

Drives Forward

Drives Backwards

Brake Pedal Functions

Functional Test Notes

General

The Detailed Equipment Information is limited in scope, and BKB Auctioneers has not inspected any aspects or components of the equipment other than those expressly set forth herein. Unless expressly stated, we make no representations or warranties, express or implied, concerning the equipment or its components, including without limitation any representations or warranties concerning functionality, conformity or compliance with any safety standard or requirement of any applicable authority or regulatory body, fitness for any particular purpose, or merchantability. You are strongly advised to perform your own detailed inspection of the equipment prior to

Functions

ThEquipment is not tested under load or operated in all available gears. We make no representation or warranty that equipment is operating in accordance with manufacturers' specifications. No inspection has been performed with respect to any functionality aspect other than those expressly included herein. Only select photos have been provided for individual undercarriage components, and may not be indicative of the condition of the entire undercarriage as a whole.

Dimensions

Measurements are given as an estimate only. Actual loaded dimensions may vary based on truck/trailer height and the loaded machine configuration/position. It is the buyer's responsibility to measure all loads before leaving our auction site to ensure the load is safe for transport. All measurements should be verified by the buyer. DO NOT rely on these measurements for transportation purposes.

Detail Information

Location

Year

Manufacturer

Model

Asset Type

Serial Number or VIN

Condition

Hours

Km's

Comes with

Notes

Operator Station

Cab Type

Transmission Detail: Speed

Transmission Detail: Shift Type

Differential Lock

Notes

Engine

Fuel Type

Manufacturer

Model

Notes

Rear Options

Hitch Type

PTO

Hydraulic Outlets

Notes

Body Details

Size

Type

Notes

Drive Train

Notes

Weights

Front Wheel Weights

Back Wheel Weights

Front Nose Weights

Notes

Undercarriage/Suspension

Tyre Manufacturer

Front Tyre Size

Rear Tyre Size

Notes

Accessories

Other

Extensions

Functionality Tests

Start

Drives Forward

Drives Backwards

Brake Pedal Functions

YES

YES

YES

YES

Functional Test Notes



Supporting Documents

Certificate of Registration

Vehicle Licence Certificate

Service Record

Other

General

The Detailed Equipment Information is limited in scope, and BKB Auctioneers has not inspected any aspects or components of the equipment other than those expressly set forth herein. Unless expressly stated, we make no representations or warranties, express or implied, concerning the equipment or its components, including without limitation any representations or warranties concerning functionality, conformity or compliance with any safety standard or requirement of any applicable authority or regulatory body, fitness for any particular purpose, or merchantability. You are strongly advised to perform your own detailed inspection of the equipment prior to

Functions

ThEquipment is not tested under load or operated in all available gears. We make no representation or warranty that equipment is operating in accordance with manufacturers' specifications. No inspection has been performed with respect to any functionality aspect other than those expressly included herein. Only select photos have been provided for individual undercarriage components, and may not be indicative of the condition of the entire undercarriage as a whole.

Dimensions

Measurements are given as an estimate only. Actual loaded dimensions may vary based on truck/trailer height and the loaded machine configuration/position. It is the buyer's responsibility to measure all loads before leaving our auction site to ensure the load is safe for transport. All measurements should be verified by the buyer. DO NOT rely on these measurements for transportation purposes.

Detail Information

Location	
Year	
Manufacturer	Landini
Model	Landini 7830 tractor
Asset Type	Tractor
Serial Number or VIN	
Condition	3 - Fair
Hours	5473
Km's	
Comes with	
Notes	

Operator Station

Cab Type	
Transmission Detail: Speed	
Transmission Detail: Shift Type	
Differential Lock	
Notes	

Engine

Fuel Type	Diesel
Manufacturer	
Model	
Notes	

Rear Options

Hitch Type	
PTO	
Hydraulic Outlets	
Notes	

Body Details

Size	
Type	
Notes	

Drive Train

Notes	
-------	--

Weights

Front Wheel Weights	Yes
Back Wheel Weights	
Front Nose Weights	
Notes	

Undercarriage/Suspension

Tyre Manufacturer	
Front Tyre Size	
Rear Tyre Size	
Notes	

Accessories

Other	
Extensions	

Functionality Tests

Start	YES
Drives Forward	YES
Drives Backwards	YES
Brake Pedal Functions	YES

Functional Test Notes

General

The Detailed Equipment Information is limited in scope, and BKB Auctioneers has not inspected any aspects or components of the equipment other than those expressly set forth herein. Unless expressly stated, we make no representations or warranties, express or implied, concerning the equipment or its components, including without limitation any representations or warranties concerning functionality, conformity or compliance with any safety standard or requirement of any applicable authority or regulatory body, fitness for any particular purpose, or merchantability. You are strongly advised to perform your own detailed inspection of the equipment prior to

Functions

ThEquipment is not tested under load or operated in all available gears. We make no representation or warranty that equipment is operating in accordance with manufacturers' specifications. No inspection has been performed with respect to any functionality aspect other than those expressly included herein. Only select photos have been provided for individual undercarriage components, and may not be indicative of the condition of the entire undercarriage as a whole.

Dimensions

Measurements are given as an estimate only. Actual loaded dimensions may vary based on truck/trailer height and the loaded machine configuration/position. It is the buyer's responsibility to measure all loads before leaving our auction site to ensure the load is safe for transport. All measurements should be verified by the buyer. DO NOT rely on these measurements for transportation purposes.



Supporting Documents

Certificate of Registration	
Vehicle Licence Certificate	
Service Record	
Other	

Detail Information

Location	
Year	
Manufacturer	DF
Model	DF 504G3 tractor
Asset Type	Tractor
Serial Number or VIN	
Condition	5 - Very Good
Hours	5473
Km's	
Comes with	Front end scoop, fork and back hoe
Notes	

Operator Station

Cab Type	
Transmission Detail: Speed	
Transmission Detail: Shift Type	
Differential Lock	
Notes	

Engine

Fuel Type	Diesel
Manufacturer	
Model	
Notes	

Rear Options

Hitch Type	
PTO	
Hydraulic Outlets	
Notes	

Body Details

Size	
Type	
Notes	

Drive Train

Notes	
-------	--

Weights

Front Wheel Weights	Yes
Back Wheel Weights	Yes
Front Nose Weights	
Notes	

Undercarriage/Suspension

Tyre Manufacturer	
Front Tyre Size	
Rear Tyre Size	
Notes	

Accessories

Other	
Extensions	

Functionality Tests

Start	YES
Drives Forward	YES
Drives Backwards	YES
Brake Pedal Functions	YES

Functional Test Notes

General

The Detailed Equipment Information is limited in scope, and BKB Auctioneers has not inspected any aspects or components of the equipment other than those expressly set forth herein. Unless expressly stated, we make no representations or warranties, express or implied, concerning the equipment or its components, including without limitation any representations or warranties concerning functionality, conformity or compliance with any safety standard or requirement of any applicable authority or regulatory body, fitness for any particular purpose, or merchantability. You are strongly advised to perform your own detailed inspection of the equipment prior to

Functions

ThEquipment is not tested under load or operated in all available gears. We make no representation or warranty that equipment is operating in accordance with manufacturers' specifications. No inspection has been performed with respect to any functionality aspect other than those expressly included herein. Only select photos have been provided for individual undercarriage components, and may not be indicative of the condition of the entire undercarriage as a whole.

Dimensions

Measurements are given as an estimate only. Actual loaded dimensions may vary based on truck/trailer height and the loaded machine configuration/position. It is the buyer's responsibility to measure all loads before leaving our auction site to ensure the load is safe for transport. All measurements should be verified by the buyer. DO NOT rely on these measurements for transportation purposes.



Supporting Documents

Certificate of Registration	
Vehicle Licence Certificate	
Service Record	
Other	

Lot Nr.		21		Date		19 May 2023	
Detail Information							
Location							
Year							
Manufacturer		UD Trucks					
Model		UD 100 Truck					
Asset Type		Tractor					
Serial Number or VIN							
Condition		5 - Very Good					
Hours							
Km's							
Comes with							
Notes							
Operator Station							
Cab Type							
Transmission Detail: Speed							
Transmission Detail: Shift Type		Manual					
Differential Lock							
Notes							
Engine							
Fuel Type							
Manufacturer							
Model							
Notes							
Rear Options							
Hitch Type							
PTO							
Hydraulic Outlets							
Notes							
Body Details							
Size							
Type							
Notes							
Drive Train							
Notes							
Weights							
Front Wheel Weights							
Back Wheel Weights							
Front Nose Weights							
Notes							
Undercarriage/Suspension							
Tyre Manufacturer							
Front Tyre Size							
Rear Tyre Size							
Notes							
Accessories							
Other							
Extensions							
Functionality Tests							
Start		YES					
Drives Forward		YES					
Drives Backwards		YES					
Brake Pedal Functions		YES					
Functional Test Notes							
Supporting Documents							
Certificate of Registration							
Vehicle Licence Certificate		YES					
Service Record		YES					
Other							



General
The Detailed Equipment Information is limited in scope, and BKB Auctioneers has not inspected any aspects or components of the equipment other than those expressly set forth herein. Unless expressly stated, we make no representations or warranties, express or implied, concerning the equipment or its components, including without limitation any representations or warranties concerning functionality, conformity or compliance with any safety standard or requirement of any applicable authority or regulatory body, fitness for any particular purpose, or merchantability. You are strongly advised to perform your own detailed inspection of

Functions
The Equipment is not tested under load or operated in all available gears. We make no representation or warranty that equipment is operating in accordance with manufacturers' specifications. No inspection has been performed with respect to any functionality aspect other than those expressly included herein. Only select photos have been provided for individual undercarriage components, and may not be indicative of the condition of the entire undercarriage as a whole.

Dimensions
Measurements are given as an estimate only. Actual loaded dimensions may vary based on truck/trailer height and the loaded machine configuration/position. It is the buyer's responsibility to measure all loads before leaving our auction site to ensure the load is safe for transport. All measurements should be verified by the buyer. DO NOT rely on these measurements for transportation purposes.