

# 1<sup>ste</sup> BLACK HILLS PRODUKSIEVEILING

WOENSDAG - 27 SEPTEMBER 2023 - 11:00

JONKERSDAM - STANDERTON



DRAKENSBERGER  
STOET

**AANBOD: 25 BULLE**

Gratis vervoer



Onder beskerming van  
Drakensberger Genootskap

VOLLEDIGE VEILINGSREËLS IS BESKIKBAAR BY: [WWW.BKB.CO.ZA](http://WWW.BKB.CO.ZA)

AFSLAERS:  
BKB LIMITED  
61 GRAHAMSTOWN RD, NORTHEAST,  
PORT ELIZABETH, 6001  
BTW NR.: 4100101338  
REG NR.: 1998/012435/06

NAVRAE:  
CAREL DAVEL 082 331 1811  
WILLE LANDMAN (EIGENAAR) 083 257 85 11  
JEAN VAN DER MERWE (EIGENAAR) 082 719 7521  
AFSLAER: BILLY LYONS 082 785 5498  
BKB, STANDERTON: 017 712 2132



[WWW.BKB.CO.ZA](http://WWW.BKB.CO.ZA)

**BKB**

The Trusted Home of Agriculture  
Die Betroubare Tuiste van Landbou

AMPTELIKE VEILINGSKATALOGUS VIR /  
OFFICIAL AUCTION CATALOGUE FOR

# BLACK HILLS PRODUKSIE VEILING

**STANDERTON**  
27 September 2023

*All Pedigree- and Performance Data is as recorded on LOGIX on 15 August 2023*





## ANIMAL, OWNER AND PEDIGREE INFORMATION

1
2
3
4
5

**LOT 1 (M)**

**SUPERBULL BREEDERS**  
 Town, Province  
078 737 2855  
super\_bull@webmail.com

**SUPERBULL'S SUPERSTAR SB 200201**

Herd Book	SP
Birth date	2020-01-01
Age	2y 7m
Inbreeding	1%
DNA	ABC001234

9 (& 10)

**SB 140007**  
SUPERBULL SB 140007 Pp(c)

Parentage	Sire	Dam
DNA	✓	✓
Genomic	✓	✓

11

**SB 140010**  
SUPERBULL SB 140010

Age 7 | AFC 27 | ICP 366  
Calves 6 | Weaned 2  
Avg. WI 89 | Wean Mat. 93  
Calvings: 16-11, 17-10, 18-10, 20-03, 21-03, 22-04, 23-04

12

**SB 110001**  
SUPERBULL SB 11 0100

**SB 110012 P**  
SUPERBULL SB 110012  
Age 10 | AFC 32 | ICP 475  
Calves 5 | Weaned -  
Avg. WI - | Wean Mat. 80

**SB 110001**  
SUPERBULL SB 110400

**SB 060004 PcH**  
SUPERBULL SB 060004  
Age 13 | AFC 72 | ICP 360  
Calves 8 | Weaned 7  
Avg. WI 105 | Wean Mat. 110

13

- Lot Number & sex (mixed lots)
  - Breed's logo
  - GT - animal is genomically tested
  - Animal Identification Number and Name
  - Polled Status
    - Celtic: PP(c)/Pp(c) - polled, HH(c) - horned
    - Phenotypic: P/PcH - polled, HH - horned, SC - scurs
  - Animal's photo, or Herd's logo
  - Herd's logo
  - Owner's information

- Animal's information
    - Herd book section
    - Birth date
    - Animal's age
    - Animal's inbreeding percentage
    - DNA Number - if available
  - Additional information (only females)
    - Age at first calving
    - Number of calves born
    - Number of calves weaned
    - Average Wean Index
    - Intercalving Period

- Parentage Verification - a green tick (✓) indicates that the sire and/or dam has been verified via microsatellite (DNA) and/or Genomic testing
  - Dam information
    - Age and Number of Calvings
    - Average Wean Index and Number of Calves Weaned
    - Age at First Calving and Intercalving Period
    - Cow award
  - Four (4) generation pedigree

**QR Code**

This code can be scanned with a smart device. It redirects to the animal's information on [www.SABeefBulls.com](http://www.SABeefBulls.com) where additional information for the animal is available.



Myostatin	
Q204X	Free
NT821	Carrier
F94L	Not Tested

### Myostatin Results

- Free - free from double muscling genes
- Carrier - heterozygotic / carrier of one double muscling gene
- D. Muscled - homozygotic / double muscled

## GENETIC VALUES - BUILDING BLOCKS

Calf and Mother				Fertility				Post-Wean Growth			Frame			Carcass		
Birth Dir.	Birth Mat.	Wean Dir.	Wean Mat.	Scr. Circ.	Heifer Fert.	Cow Fert.	Longev.	Post Wean	ADG	FCR	Mature Weight	Height	Length	EMA	Fat	Mar
83	121	130	89	112	84	101	112	125	126	129	113	104	115	149	82	119
87%	70%	83%	70%	81%	68%	59%	69%	72%	76%	80%	65%	81%	80%	77%	74%	73%
10	11	12	13	16	14	15	17	18	19	20	21	22	23	25	26	27

The Logix Selection Values are compiled of specific genetic building blocks, as indicated in the selection value descriptions on the next page. These genetic building blocks are indicated in the catalogue by their Breeding Value indices and accuracies.

## PHENOTYPIC VALUES

Birth Weight	205D Weight	365D Weight	540D Weight	ADG Index	FCR Index	Scrotum	LH
47kg	239kg   109 (19)	284kg   99 (10)	390kg   92 (10)	1680g/d   90 (13)	6.08   98	353mm (D1)	1.20
10	12			19	20	16	24

- 205D, 365D, 540D weights - adjusted weaning, year and 18 month weights, the phenotypic index obtained, and the number of animals in the contemporary group
- ADG and FCR Indices - phenotypic index obtained within the animal's contemporary group
- Scrotum - adjusted scrotal circumference, in mm, as measured at the end of the growth test, as well as the growth test type
- Length-Height Ratio (LH) - the animal's length to height ratio, as measured at the end of the growth test

## LOGIX SELECTION VALUES

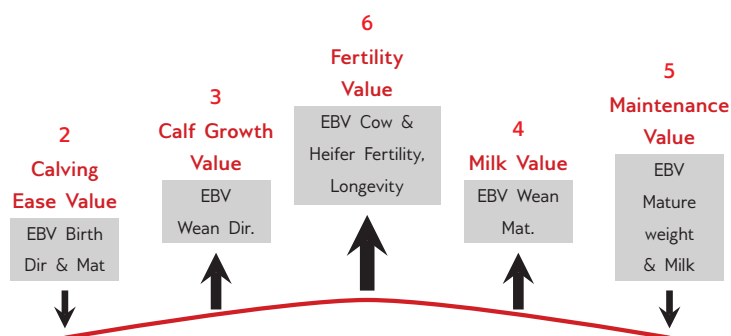
COW VALUE 108	
103	Calving Ease Value
118	Calf Growth Value
86	Milk Value
80	Maintenance Value
110	Fertility Value
GROWTH VALUE 105	
CARCASS VALUE 110	
PRODUCTION VALUE 103	



### 1 L♀ GIX Cow Value

Selection for:

- Fertile cows,
- with low maintenance,
- that calf easily,
- and wean heavy calves



### 7 L♀ GIX Growth Value

Selection for efficient growers on veld & in the feedlot



### 8 L♀ GIX Carcass Value

Selection for higher meat yield on carcass



### 9 L♀ GIX Production Value

Selection for easy-care, Profitable cattle

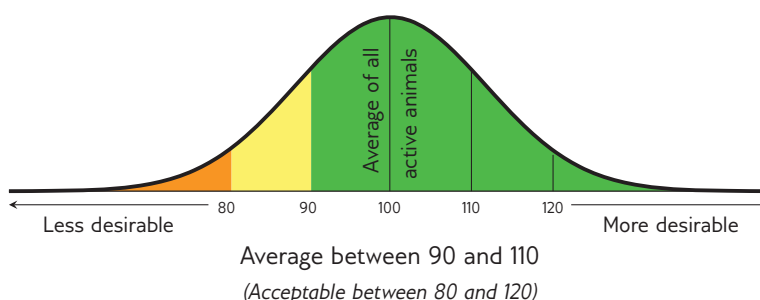
- 80% Cow Value
- 20% Growth Value

## EXPLANATION OF BREEDING VALUES AND SELECTION VALUES

Traits		Description/Measurement	Goal	General Guidelines				
				<80	<90	90-110	>110	>120
Selection Values	1 Cow Value	Combination of Calving Ease, Calf Growth, Milk, Maintenance and Fertility Values (Rand-Value)	Profitable Cow	Loss				Profit
	2 Calving Ease Value	Risk for calving problems (calf too heavy) vs calf too small	Avg. birth weight	High				Low
	3 Calf Growth Value	Calf's genetic ability for pre-weaning growth	Heavy weaner calf	Light				Heavy
	4 Milk Value	Cow's genetic mothering and milking ability	Enough milk for the calf	Less				More
	5 Maintenance Value	Maintenance requirements of cow (cow weight and milk)	Low cow maintenance	High			*	Low
	6 Fertility Value	Fertility and retention of cows and heifers	Fertile cows	Low				High
	7 Growth Value	Efficient growth on veld and in feedlot (R-value)	Profitable growth	Loss				Profit
	8 Carcass Value	Meat on carcass (Weight and RTU EBVs)	More meat on the carcass	Less				More
	9 Production Value	Combination of Cow- and Growth values (R-value)	Profitable animals	Loss				Profit
Cow & Heifer	10 Birth Weight Direct	Birth weight (Calf's genetic ability)	Avg. birth weight	Heavy				Light
	11 Birth Weight Maternal	Birth weight (Cow's genetic ability)	Easy calving	Heavy				Light
	12 Weaning Weight Direct	Weaning weight (Calf's genetic ability)	Heavy weaner calves	Light				Heavy
	13 Weaning Weight Maternal	Weaning weight (Cow's genetic ability)	Good mothers	Poor				Good
	21 Mature Cow Weight	Cow weight at weaning of first three calves	Avg. mature cow weight	Light			*	Heavy
Fertility	Cow-Calf Birth	EBV Birth Direct / EBV Mature Cow weight	Average	Low				High
	Cow-Calf Wean	EBV Wean Direct / EBV Mature Cow weight	High calf-cow ratio	Low				High
	14 Heifer Fertility	Age at first calving	Fertile heifers	Less				More
	15 Cow Fertility	First 3 inter-calving periods (ICPs)	Fertile cows	Less				More
Growth & Frame	16 Scrotal Circumference	As measured during the growth test	Fertile bulls	Less				More
	17 Longevity	Retention of progeny	Acceptable progeny	Poor				Good
	18 Post-Wean Weight	12- and 18 month weights	Good post-wean growth	Low				High
	19 Average Daily Gain	Average daily gain	Good growth	Poor				Good
	20 Feed Conversion Ratio	100g feed intake / g weight gain	Feed efficiency	Poor				Good
	Final Test Weight	Final weight in the growth test	Heavy carcass	Light			*	Heavy
	22 Height	Shoulder / Hip height in growth test	Average height	Short				Tall
	23 Length	Length in growth test	Longer for more muscle	Short				Long
Carcass	24 Length-Height Ratio	EBV Length / EBV Height	Longer rather than tall	<1				>1
	25 Eye Muscle Area	RTU measured eye muscle area	Bigger steaks	Small				Big
	26 Fat Thickness	RTU measured P8 backfat thickness	Carcass quality	Thin				Thick
	27 Marbling	RTU measured % of intra-muscular fat	Juicy meat	Low				High

\* Determined by own selection goal

## INTERPRETATION OF BREEDING VALUE INDICES



## LOT 1 (M)



## BH 200079

BLACK HILLS LEM



Herd Book	B
Birth date	2020-11-13
Age	2.9 years
Inbreeding	0%
DNA	U3111U001

**BH 170062 HH**  
BLACK HILLS MASJEN  
Wean Mat. 100

Parentage	Sire	Dam
DNA	✓	✓
Genomic		

**BH 180085**  
BLACK HILLS BH 180085  
Age 3y | AFC - | ICP 359d  
Calves 2 | Weaned 2 | Wean Mat. 104  
Avg. WI 103 | CCB 7.42 | CCW 39  
Calvings: 20-11, 21-11

**DBB 110029**  
BLYDE HOOFFMAN  
Wean Mat. 103

**BH 100237**  
BLACK HILLS SL10237  
Age 7y | AFC - | ICP 385d  
Calves 3 | Weaned 3  
Avg. WI 97 | Wean Mat. 101

**PU 050017**  
GRYSHOEK 0517  
**DBB 070033**  
BLYDE BLYDE BLOMMETJIE  
Age 4y | Avg. WI 111  
Calves 2 | Weaned 2

## BLACK HILLS DRAKENSBERGERS



Potchefstroom, North  
West  
0832578511  
willie@blackhills.co.za

POSBUS 19792, NOORDBRUG, 2522



Myostatin	
Q204X	Not Tested
NT821	Free
F94L	Not Tested

COW VALUE		-
115	Calving Ease Value	
80	Calf Growth Value	
-	Milk Value	
-	Maintenance Value	
-	Fertility Value	
GROWTH VALUE		-
CARCASS VALUE		89
PRODUCTION VALUE		-
Birth Weight	205D Weight	
24kg	194kg   106 (2)	

**LOGIX**  
GENETICS  
EBV Analysis 2023-07-19

Calf and Mother				Fertility				
Birth Dir.	Birth Mat.	Wean Dir.	Wean Mat.	Scr. Circ.	Heifer Fert.	Cow Fert.	Longev.	
134	-	80	-	63	-	-	-	
67%		59%		72%				
Post-Wean Growth		Frame			Carcass			
Post Wean	ADG	FCR	Mature Weight	Height	Length	EMA	Fat	Mar
83	94	-	-	87	82	93	88	51
41%	61%			73%	70%	64%	57%	56%
540D Weight		ADG Index		FCR Index		Scrotum		LH
-		1655g/d   98 (21)		-		290mm (D2)		1.17

**SELLER REMARKS:** Puik nek, skof en skouer ontwikkeling. Besondere vel en haar. Manlik met breë rug. Moer het OEK van 25 maande en TKP van 359/2, Ouma het TKP van 385/2. Goeie geboorte, melk en groei teelwaarde.

## LOT 2 (M)



## BH 200021 HH

BLACK HILLS DUBBEL II



Herd Book	SP
Birth date	2020-09-11
Age	3 years
Inbreeding	0%
DNA	WS025249

**BH 170027 HH**  
BLACK HILLS ANKER  
Wean Mat. 105

Parentage	Sire	Dam
DNA	✓	✓
Genomic	✓	✓

**BH 160092**  
BLACK HILLS DINA 2  
Age 5y | AFC 33m | ICP 380d  
Calves 3 | Weaned 3 | Wean Mat. 102  
Avg. WI 97 | CCB 7.25 | CCW 39.5  
Calvings: 19-08, 20-09, 21-09

**HN 130186 HH**  
HYMGERT VV13186  
Wean Mat. 96

**BH 140402**  
BLACK HILLS ASTER A1  
Age 9y | AFC 36m | ICP 380d  
Calves 6 | Weaned 6  
Avg. WI 97 | Wean Mat. 109

**DBB 110029**  
BLYDE HOOFFMAN  
Wean Mat. 103

**BH 100001**  
BLACK HILLS SL1001  
Age 7y | AFC - | ICP 353d  
Calves 3 | Weaned 3  
Avg. WI 99 | Wean Mat. 105

**F 100015**  
FRELON X1015  
**HN 070116**  
HYMGERT VV 07116  
Age 6y | Avg. WI 96  
Calves 4 | Weaned 4  
**BH 110112**  
BLACK HILLS BISMARCK 2  
**BH 110120**  
BLACK HILLS ASTER 1  
Age 12y | Avg. WI 102  
Calves 9 | Weaned 9  
**PU 050017**  
GRYSHOEK 0517  
**DBB 070033**  
BLYDE BLYDE BLOMMETJIE  
Age 4y | Avg. WI 111  
Calves 2 | Weaned 2

## BLACK HILLS DRAKENSBERGERS



Potchefstroom, North  
West  
0832578511  
willie@blackhills.co.za

POSBUS 19792, NOORDBRUG, 2522



Myostatin	
Q204X	Free
NT821	Carrier
F94L	Free

COW VALUE		98
118	Calving Ease Value	
89	Calf Growth Value	
102	Milk Value	
98	Maintenance Value	
108	Fertility Value	
GROWTH VALUE		81
CARCASS VALUE		87
PRODUCTION VALUE		94
Birth Weight		205D Weight
36kg	202kg   92 (18)	

**LOGIX**  
GENETICS  
Genomic Breeding Value  
Analysis 2023-07-19

Calf and Mother				Fertility			
Birth Dir.	Birth Mat.	Wean Dir.	Wean Mat.	Scr. Circ.	Heifer Fert.	Cow Fert.	Longev.
110	114	89	102	95	111	-	103
75%	52%	73%	54%	75%	43%		48%
Post-Wean Growth		Frame			Carcass		
ADG	FCR	Mature Weight	Height	Length	EMA	Fat	Mar
83	-	100	59	68	102	69	79
67%		42%	76%	74%	69%	64%	63%
540D Weight		ADG Index		FCR Index	Scrotum		LH
-		1750g/d   99 (24)		-	342mm (D2)		1.19

**SELLER REMARKS:** Breë, diep en manlike bul van voor tot agter. Sterk agterkwart met vol binne en buite dye. Moer het TKP van 380/3, Oumas het TKP van 380/6 en 353/3. Self in kudde gebruik.



## LOT 3 (M)



## BH 200033 HH

BLACK HILLS SUPER V



Kuddeboek	SP
Geb. dtm	2020-09-23
Oud.	3 jaar
Inteling	1%
DNS	WS025536

### BLACK HILLS DRAKENSBERGERS



Potchefstroom, North

West  
0832578511

willie@blackhills.co.za

POSBUS 19792, NOORDBRUG, 2522



#### Miostatien

Q204X	Skoon
NT821	Skoon
F94L	Skoon

#### KOEIWAARDE 104

105	Kalfgemak Waarde
108	Kalfgroei Waarde
97	Melk Waarde
-	Onderhoudswaarde
104	Vrugbaarheidswaarde

#### GROEI WAARDE 89

#### KARKAS WAARDE 98

#### PRODUKSIE WAARDE 100

Geb. Gewig	205D Gewig	365D Gewig	540D Gewig	GDT Indeks	VOV Indeks	Skrotum	LH
37kg	237kg   111 (18)	-	-	1762g/d   93 (21)	-	359mm (D2)	1.21

VERKOPER OPMERKINGS: Breë, gladde haar bul met baie kapasiteit en goeie balans, vleis eienskappe en lengte. Uit besonderse vrugbare moeder lyne. Moer het TKP van 367/9, Oumas het TKP van 380/6 en 389/8. In die kudde gebruik.

BH 170027 HH  
BLACK HILLS ANKER  
Spn Mat. 105

Ouerskap	Vaar	Moer
DNS	✓	✓
Genomies	✓	✓

BH 110125  
BLACK HILLS SIMBA 7

Oud. 11j | OEK 35m | TKP 367d  
Kalwers 9 | Gespeen 9 | Spn. Mat. 102  
Gem. SI 102 | CCB 7.27 | CCW 46.1

Kalwings: 14-08, 15-08, 16-08,  
17-08, 18-08, 19-08, 20-09,  
21-08, 22-09

HN 130186 HH  
HYMGERT VV13186  
Spn Mat. 96

BH 140402  
BLACK HILLS ASTER A1  
Oud. 9j | OEK 36m | TKP 380d  
Kalwers 6 | Gespeen 6  
Gem. SI 97 | Spn. Mat. 109

BE 040068  
SWARTBULT OUIJAAR K

Spn Mat. 77

JA 020101  
JATRO 02101

Oud. 10j | OEK - | TKP 389d  
Kalwers 8 | Gespeen 8  
Gem. SI 101 | Spn. Mat. 109

F 100015  
FRELON X1015  
HN 070116  
HYMGERT VV 07116  
Oud. 6j | Gem. SI 96  
Kalwers 4 | Gespeen 4

BH 110112  
BLACK HILLS BISMARCK 2

BH 110120  
BLACK HILLS ASTER 1  
Oud. 12j | Gem. SI 102  
Kalwers 9 | Gespeen 9

BV 990152  
BUFFALO-VALLEY JASON

BE 000014  
SWARTBULT MURIEL K  
Oud. 14j | Gem. SI 95  
Kalwers 7 | Gespeen 7



Genomiese Teelwaarde  
Analise 2023-07-19

#### Kalf en Moeder

Geb. Dir.	Geb. Mat.	Spn. Dir.	Spn. Mat.	Skr. Omtr.	Vers Vrugb.	Koei Vrugb.	Lanklew.
105	99	108	97	110	98	-	109
76%	54%	74%	56%	75%	41%	-	47%

#### Na-Speen Groei

Na-Speen	GDT	VOV
103	88	-
61%	67%	-

#### Raam

Volw. Gewig	Hoogte	Lengte
-	81	92
-	77%	74%

#### Karkas

OSO	Vet	Mar
139	53	100
68%	63%	62%

## LOT 4 (M)



## BH 200082

BLACK HILLS KARWATS IV



Kuddeboek	SP
Geb. dtm	2020-11-08
Oud.	2.9 jaar
Inteling	1%
DNS	U2823U078

### BLACK HILLS DRAKENSBERGERS



Potchefstroom, North

West  
0832578511

willie@blackhills.co.za

POSBUS 19792, NOORDBRUG, 2522



#### Miostatien

Q204X	Nie Getoets
NT821	Skoon
F94L	Nie Getoets

#### KOEIWAARDE 92

127	Kalfgemak Waarde
90	Kalfgroei Waarde
99	Melk Waarde
-	Onderhoudswaarde
86	Vrugbaarheidswaarde

#### GROEI WAARDE 85

#### KARKAS WAARDE 95

#### PRODUKSIE WAARDE 89

Geb. Gewig	205D Gewig	365D Gewig	540D Gewig	GDT Indeks	VOV Indeks	Skrotum	LH
34kg	225kg   112 (25)	-	-	1643g/d   94 (24)	-	349mm (D2)	1.03

VERKOPER OPMERKINGS: Lang, breë vleisbul met goeie balans! Skoon onderlyn met sterk rug. Moer het TKP van 374/9, Oumas het TKP van 372/2 en 348/6.

BH 160021  
BLACK HILLS CHRIS  
Spn Mat. 101

Ouerskap	Vaar	Moer
DNS	✓	-
Genomies	-	-

BH 100002  
BLACK HILLS BH100002

Oud. 11j | OEK 32m | TKP 374d  
Kalwers 9 | Gespeen 8 | Spn. Mat. 98  
Gem. SI 103 | CCB 6.62 | CCW 44

Kalwings: 12-08, 13-10, 14-10,  
15-12, 16-10, 17-09, 18-09, 19-11,  
20-11

BH 110117  
BLACK HILLS PATROON  
Spn Mat. 111

BH 130324  
BLACK HILLS CARINA 6  
Oud. 4j | OEK 34m | TKP 372d  
Kalwers 2 | Gespeen 2  
Gem. SI 102 | Spn. Mat. 92

M 050052  
MSF- LEBUMBA  
Spn Mat. 88

BH 010001  
BH0101

Oud. 13j | OEK - | TKP 348d  
Kalwers 6 | Gespeen 6  
Gem. SI 108 | Spn. Mat. 107

CL 040048  
GRASMUNT KOK 2  
BH 030001  
BH0301

Oud. 15j | Gem. SI 98  
Kalwers 9 | Gespeen 8

L 050032  
NELLO LE GRANGE

M 060027  
MSF- LEONARA-LESSON

Oud. 8j | Gem. SI 105  
Kalwers 7 | Gespeen 5

DFF 010067  
SWARTMARK KRUIN 2

LW 020014  
AMALIA 0214  
Oud. 21j | Gem. SI 105  
Kalwers 2 | Gespeen 2



EBV Analise 2023-07-19

#### Kalf en Moeder

Geb. Dir.	Geb. Mat.	Spn. Dir.	Spn. Mat.	Skr. Omtr.	Vers Vrugb.	Koei Vrugb.	Lanklew.
119	116	90	99	109	-	-	83
76%	56%	73%	54%	75%	-	-	46%

#### Na-Speen Groei

Na-Speen	GDT	VOV
91	91	-
58%	67%	-

#### Raam

Volw. Gewig	Hoogte	Lengte
-	80	63
-	77%	74%

#### Karkas

OSO	Vet	Mar
101	81	116
68%	63%	62%





## LOT 5 (M)



## BH 190045 HH

BLACK HILLS ANKER IV



Herd Book	SP
Birth date	2019-09-28
Age	4 years
Inbreeding	0%
DNA	WS021144

GR 130070 HH  
ROUVUS GR 130070  
Wean Mat. 71

Parentage	Sire	Dam
DNA	✓	✓
Genomic	✓	✓

BH 110120  
BLACK HILLS ASTER I

Age 12y | AFC 35m | ICP 370d  
Calves 9 | Weaned 9 | Wean Mat. 107  
Avg. WI 102 | CCB 7.86 | CCW 51.6

Calvings: 14-09, 15-09, 16-10,  
17-09, 18-09, 19-09, 20-11, 21-10,  
22-10

GR 100221 HH  
ROUVUS KRUIS 4  
Wean Mat. 130

GR 100060  
ROUVUS NOR 1

Age 12y | AFC 36m | ICP 370d  
Calves 10 | Weaned 9  
Avg. WI 84 | Wean Mat. 50

JA 080014  
JATRO JA080014

Wean Mat. 109

BH 020001  
BH020001

Age 14y | AFC - | ICP 381d  
Calves 6 | Weaned 6  
Avg. WI 95 | Wean Mat. 85

GR 070086  
ROUVUS WATIE 3  
GR 060606  
ROUVUS JOVALIE 2  
Age 12y | Avg. WI 102  
Calves 10 | Weaned 11  
GR 070077  
ROUVUS SWARTKOP 7  
GR 070740 HH  
ROUVUS NORA 4  
Age 11y | Avg. WI 89  
Calves 8 | Weaned 7  
F 040084  
FRELO BI 04 0084  
JA 010068  
JATRO 01 68  
Age 10y | Avg. WI 93  
Calves 8 | Weaned 8

## BLACK HILLS DRAKENSBERGERS

Potchefstroom, North

West  
0832578511

willie@blackhills.co.za

POSBUS 19792, NOORDBRUG, 2522

USED IN HERD (8)

COW VALUE 104

115	Calving Ease Value
106	Calf Growth Value
96	Milk Value
91	Maintenance Value
101	Fertility Value

GROWTH VALUE 130

CARCASS VALUE 121

PRODUCTION VALUE 109



Genomic Breeding Value  
Analysis 2023-07-19

Calf and Mother				Fertility			
Birth Dir.	Birth Mat.	Wean Dir.	Wean Mat.	Scr. Circ.	Heifer Fert.	Cow Fert.	Longev.
115	100	106	96	131	94	-	118
84%	58%	81%	61%	76%	46%		54%

Post-Wean Growth			Frame			Carcass		
Post Wean	ADG	FCR	Mature Weight	Height	Length	EMA	Fat	Mar
112	138	135	108	125	123	111	118	120
60%	68%	41%	42%	77%	74%	69%	64%	63%

Birth Weight	205D Weight	365D Weight	540D Weight	ADG Index	FCR Index	Scrotum	LH
33kg	237kg   104 (8)	-	-	1833g/d   117 (15)	-	385mm (D2)	1.20



### Myostatin

Q204X	Free
NT821	Free
F94L	Free

SELLER REMARKS: Stoetbul in eie kudde gebruik. Sterk manlike bul met uitstekende balans in lengte, breedte, diepte en kapasiteit. Moer het TKP van 370/9, Oumas het TKP van 371/9 en 382/6. Unieke kombinasie van kurwe-knakker teelwaardes, bouwvorm en goeie vel en haar.

## LOT 6 (M)



## BH 200012

BLACK HILLS PROTON IV



Herd Book	B
Birth date	2020-09-10
Age	3 years
Inbreeding	0%
DNA	U2823U012

BH 160021  
BLACK HILLS CHRIS  
Wean Mat. 101

Parentage	Sire	Dam
DNA	✓	✓
Genomic		

BH 120018  
BLACK HILLS 1218

Age 11y | AFC - | ICP 367d  
Calves 8 | Weaned 7 | Wean Mat. 128  
Avg. WI 106 | CCB 6.73 | CCW 38

Calvings: 15-09, 16-09, 17-09,  
18-09, 19-10, 20-09, 21-09, 22-09

BH 110117  
BLACK HILLS PATROON  
Wean Mat. 111

BH 130324  
BLACK HILLS CARINA 6

Age 4y | AFC 34m | ICP 372d  
Calves 2 | Weaned 2  
Avg. WI 102 | Wean Mat. 92

CL 040048  
GRASMUNT KOK 2  
BH 030001  
BH0301  
Age 15y | Avg. WI 98  
Calves 9 | Weaned 8  
L 050032  
NELLO LE GRANGE  
M 060027  
MSF- LEONARA-LESSON  
Age 8y | Avg. WI 105  
Calves 7 | Weaned 5

## BLACK HILLS DRAKENSBERGERS

Potchefstroom, North

West  
0832578511

willie@blackhills.co.za

POSBUS 19792, NOORDBRUG, 2522

COW VALUE 87

90	Calving Ease Value
93	Calf Growth Value
115	Milk Value
-	Maintenance Value
94	Fertility Value

GROWTH VALUE 89

CARCASS VALUE 101

PRODUCTION VALUE 86



EBV Analysis 2023-07-19

Calf and Mother				Fertility			
Birth Dir.	Birth Mat.	Wean Dir.	Wean Mat.	Scr. Circ.	Heifer Fert.	Cow Fert.	Longev.
100	81	93	115	108	-	-	89
60%	53%	56%	50%	74%			43%

Post-Wean Growth			Frame			Carcass		
Post Wean	ADG	FCR	Mature Weight	Height	Length	EMA	Fat	Mar
93	91	-	-	88	95	100	107	144
54%	66%			76%	73%	68%	63%	61%

Birth Weight	205D Weight	365D Weight	540D Weight	ADG Index	FCR Index	Scrotum	LH
38kg	178kg   100 (1)	-	-	1738g/d   92 (21)	-	352mm (D2)	1.21



### Myostatin

Q204X	Not Tested
NT821	Free
F94L	Not Tested

SELLER REMARKS: Breë en diep bul met lengte - hoogte verhouding van 1.21. Een van 'n tweeling. Moer het TKP van 367/9, Ouma het TKP van 372/2. Bul het goeie geboorte, melk, lengte, skrotum en ouderdom eerste kalf teelwaardes. In kommersiële kudde gebruik.



## LOT 7 (M)



## BH 200110 BLACK HILLS SEKELBOS III



Kuddeboek	B
Geb. dtm	2020-12-03
Oud.	2.8 jaar
Inteling	0%
DNS	U3111U021

**BH 160021**  
BLACK HILLS CHRIS  
Spn Mat. 101

Ouerskap	Vaar	Moer
DNS	✓	
Genomies		

**BH 090244**  
BLACK HILLS W09244  
Oud. 12j | OEK - | TKP 377d  
Kalwers 7 | Gespeen 7 | Spn. Mat. 107  
Gem. SI 101 | CCB 7.92 | CCW 41.8  
Kalwings: 15-09, 16-09, 17-10,  
18-11, 19-11, 20-12, 21-12

**BH 110117**  
BLACK HILLS PATROON  
Spn Mat. 111

**BH 130324**  
BLACK HILLS CARINA 6  
Oud. 4j | OEK 34m | TKP 372d  
Kalwers 2 | Gespeen 2  
Gem. SI 102 | Spn. Mat. 92

**CL 040048**  
GRASMUNT KOK 2  
**BH 030001**  
BH0301  
Oud. 15j | Gem. SI 98  
Kalwers 9 | Gespeen 8  
**L 050032**  
NELLO LE GRANGE  
**M 060027**  
MSF- LEONARA-LESSON  
Oud. 8j | Gem. SI 105  
Kalwers 7 | Gespeen 5

### BLACK HILLS DRAKENSBERGERS



Potchefstroom, North  
West  
0832578511  
willie@blackhills.co.za

POSBUS 19792, NOORDBRUG, 2522

#### KOEIWAARDE 90

100	Kalfgemak Waarde
94	Kalfgroei Waarde
105	Melk Waarde
-	Onderhoudswaarde
89	Vrugbaarheidswaarde

#### GROEI WAARDE 103

#### KARKAS WAARDE 97

#### PRODUKSIE WAARDE 92

#### Miostatien

Q204X	Nie Getoets
NT821	Skoon
F94L	Nie Getoets



Geb. Gewig	205D Gewig	365D Gewig	540D Gewig	GDT Indeks	VOV Indeks	Skrotum	LH
39kg	219kg   106 (25)	-	-	1738g/d   103 (24)	-	374mm (D2)	1.21

VERKOPER OPMERKINGS: Lang bul vol vleis met goeie breedte en sterk rug. Bul met L:H van 1.21. Moer het TKP van 377/7, Ouma het TKP van 372/2. Baie goeie teelwaardes.

## LOT 8 (M)



## BH 200042 HH BLACK HILLS MANTEL III



Kuddeboek	B
Geb. dtm	2020-10-02
Oud.	3 jaar
Inteling	0%
DNS	U2823U040

**BH 160021**  
BLACK HILLS CHRIS  
Spn Mat. 101

Ouerskap	Vaar	Moer
DNS	✓	
Genomies		

**BH 120001**  
BLACK HILLS 1201  
Oud. 11j | OEK - | TKP 372d  
Kalwers 8 | Gespeen 7 | Spn. Mat. 102  
Gem. SI 102 | CCB 6.87 | CCW 40.9  
Kalwings: 15-10, 16-09, 17-10,  
18-10, 19-10, 20-10, 21-10, 22-12

**BH 110117**  
BLACK HILLS PATROON  
Spn Mat. 111

**BH 130324**  
BLACK HILLS CARINA 6  
Oud. 4j | OEK 34m | TKP 372d  
Kalwers 2 | Gespeen 2  
Gem. SI 102 | Spn. Mat. 92

**CL 040048**  
GRASMUNT KOK 2  
**BH 030001**  
BH0301  
Oud. 15j | Gem. SI 98  
Kalwers 9 | Gespeen 8  
**L 050032**  
NELLO LE GRANGE  
**M 060027**  
MSF- LEONARA-LESSON  
Oud. 8j | Gem. SI 105  
Kalwers 7 | Gespeen 5

### BLACK HILLS DRAKENSBERGERS



Potchefstroom, North  
West  
0832578511  
willie@blackhills.co.za

POSBUS 19792, NOORDBRUG, 2522

#### KOEIWAARDE 88

110	Kalfgemak Waarde
88	Kalfgroei Waarde
99	Melk Waarde
115	Onderhoudswaarde
83	Vrugbaarheidswaarde

#### GROEI WAARDE 81

#### KARKAS WAARDE 87

#### PRODUKSIE WAARDE 85

#### Miostatien

Q204X	Skoon
NT821	Skoon
F94L	Skoon



Geb. Gewig	205D Gewig	365D Gewig	540D Gewig	GDT Indeks	VOV Indeks	Skrotum	LH
37kg	213kg   103 (25)	-	-	1595g/d   90 (24)	-	355mm (D2)	1.21

VERKOPER OPMERKINGS: Lang bul met besondere bespierung op die rug en agterkwart. Goeie vel en haar. Moer het TKP van 372/8, Ouma het TKP van 372/2. Bul met lengte hoogte verhouding van 1.21.



## LOT 9 (M)



## BH 190063 HH

BLACK HILLS POTYSTER



Herd Book	SP
Birth date	2019-10-17
Age	4 years
Inbreeding	4%
DNA	WS021148

**BH 160078 HH**  
BLACK HILLS RAMKAT II  
Wean Mat. 111

Parentage	Sire	Dam
DNA	✓	✓
Genomic	✓	✓

**BH 150037 HH**  
BLACK HILLS PINKIE 1

Age 8y | AFC 36m | ICP 378d  
Calves 5 | Weaned 4 | Wean Mat. 119  
Avg. WI 101 | CCB 7.82 | CCW 41.3  
Calvings: 18-09, 19-10, 20-10, 21-10, 22-10

**BH 130313**  
BLACK HILLS BISMARCK IV  
Wean Mat. 109

**BH 100224**  
BLACK HILLS SL1024  
Age 6y | AFC - | ICP 413d  
Calves 2 | Weaned 2  
Avg. WI 115 | Wean Mat. 129

**BH 110117**  
BLACK HILLS PATROON  
Wean Mat. 111

**BH 120018**  
BLACK HILLS 1218  
Age 11y | AFC - | ICP 367d  
Calves 8 | Weaned 7  
Avg. WI 106 | Wean Mat. 128

**CL 040048**  
GRASMUNT KOK 2  
**CL 040051**  
GRASMUNT RIETA 3  
Age 14y | Avg. WI 99  
Calves 11 | Weaned 9

**CL 040048**  
GRASMUNT KOK 2  
**BH 030001**  
BH0301  
Age 15y | Avg. WI 98  
Calves 9 | Weaned 8

## BLACK HILLS DRAKENSBERGERS

Potchefstroom, North  
West  
0832578511  
willie@blackhills.co.za  
POSBUS 19792, NOORDBRUG, 2522

USED IN HERD (9)



### Myostatin

Q204X	Free
NT821	Free
F94L	Free

### COW VALUE 103

78	Calving Ease Value
117	Calf Growth Value
113	Milk Value
-	Maintenance Value
91	Fertility Value

### GROWTH VALUE 130

### CARCASS VALUE 128

### PRODUCTION VALUE 109

Birth Weight	205D Weight	365D Weight	540D Weight	ADG Index	FCR Index	Scrotum	LH
38kg	227kg   104 (6)	-	-	1798g/d   115 (15)	-	370mm (D2)	1.20

SELLER REMARKS: Besondere lengte en breedte reg deur. Goeie sekondêre manlike eienskappe, veral die nek skof en skouer ontwikkeling en wakker oë. Lang heup na sitbeen. Moer het TKP van 378/5, Ouma het TKP van 369/9. Baie goeie speen, melk, GDT, lengte en skrotum teelwaardes. Bul self in kudde gebruik.

## LOT 10 (M)



## BH 200067 HH

BLACK HILLS MAJOOR



## BLACK HILLS DRAKENSBERGERS

Potchefstroom, North  
West  
0832578511  
willie@blackhills.co.za  
POSBUS 19792, NOORDBRUG, 2522



### Myostatin

Q204X	Free
NT821	Free
F94L	Free

### COW VALUE 104

105	Calving Ease Value
96	Calf Growth Value
105	Milk Value
122	Maintenance Value
87	Fertility Value

### GROWTH VALUE 103

### CARCASS VALUE 99

### PRODUCTION VALUE 104

Birth Weight	205D Weight	365D Weight	540D Weight	ADG Index	FCR Index	Scrotum	LH
39kg	216kg   98 (18)	-	-	1714g/d   98 (24)	-	358mm (D2)	1.20

**BH 170027 HH**  
BLACK HILLS ANKER  
Wean Mat. 105

Parentage	Sire	Dam
DNA	✓	✓
Genomic	✓	✓

**BH 160046**  
BLACK HILLS MANTROEKIE 2

Age 4y | AFC 36m | ICP 405d  
Calves 2 | Weaned 1 | Wean Mat. 105  
Avg. WI 98 | CCB 8.67 | CCW 44.6  
Calvings: 19-09, 20-10

**HN 130186 HH**  
HYMGERT VV13186  
Wean Mat. 96

**BH 140402**  
BLACK HILLS ASTER A1  
Age 9y | AFC 36m | ICP 380d  
Calves 6 | Weaned 6  
Avg. WI 97 | Wean Mat. 109

**BH 110112**  
BLACK HILLS BISMARCK 2  
Wean Mat. 105

**BH 120001**  
BLACK HILLS 1201  
Age 11y | AFC - | ICP 372d  
Calves 8 | Weaned 7  
Avg. WI 102 | Wean Mat. 102

**F 100015**  
FRELON X1015  
**HN 070116**  
HYMGERT VV 07116  
Age 6y | Avg. WI 96  
Calves 4 | Weaned 4

**BH 110112**  
BLACK HILLS BISMARCK 2  
**BH 110120**  
BLACK HILLS ASTER 1  
Age 12y | Avg. WI 102  
Calves 9 | Weaned 9  
**CL 040048**  
GRASMUNT KOK 2  
**CL 040051**  
GRASMUNT RIETA 3  
Age 14y | Avg. WI 99  
Calves 11 | Weaned 9



Calf and Mother				Fertility			
Birth Dir.	Birth Mat.	Wean Dir.	Wean Mat.	Scr. Circ.	Heifer Fert.	Cow Fert.	Longev.
105	100	96	105	122	89	82	105
77%	59%	75%	60%	77%	54%	49%	57%

Post-Wean Growth			Frame			Carcass		
Post Wean	ADG	FCR	Mature Weight	Height	Length	EMA	Fat	Mar
96	101	90	80	108	116	110	82	81
66%	71%	47%	52%	78%	76%	72%	69%	68%

SELLER REMARKS: Lang bul met baie kapasiteit, breedte en vol agterkwart. Baie goeie balans vir die vleisbul. Oumas het TKP van 380/6 en 372/8. Baie goeie teelwaardes. Bul self in die kudde gebruik.



## LOT 11 (M)



## BH 200031 HH

BLACK HILLS BH 200031



Kuddeboek	A
Geb. dtm	2020-09-22
Oud.	3 jaar
Inteling	0%
DNS	WS025253

BH 170027 HH  
BLACK HILLS ANKER  
Spn Mat. 105

Ouerskap	Vaar	Moer
DNS		
Genomies	✓	

HN 130186 HH  
HYMGERT VV13186  
Spn Mat. 96

BH 140402  
BLACK HILLS ASTER A1  
Oud. 9j | OEK 36m | TKP 380d  
Kalwers 6 | Gespeen 6  
Gem. SI 97 | Spn. Mat. 109

F 100015  
FRELON X1015  
HN 070116  
HYMGERT VV 07116  
Oud. 6j | Gem. SI 96  
Kalwers 4 | Gespeen 4  
BH 110112  
BLACK HILLS BISMARCK 2  
BH 110120  
BLACK HILLS ASTER 1  
Oud. 12j | Gem. SI 102  
Kalwers 9 | Gespeen 9

### BLACK HILLS DRAKENSBERGERS



Potchefstroom, North  
West  
0832578511  
willie@blackhills.co.za

POSBUS 19792, NOORDBRUG, 2522



#### Miostatien

Q204X	Skoon
NT821	Skoon
F94L	Skoon

#### KOEIWAARDE 95

108	Kalfgemak Waarde
90	Kalfgroei Waarde
106	Melk Waarde
113	Onderhoudswaarde
86	Vrugbaarheidswaarde

#### GROEI WAARDE 96

#### KARKAS WAARDE 95

#### PRODUKSIE WAARDE 94

Geb. Gewig	205D Gewig	365D Gewig	540D Gewig	GDT Indeks	VOV Indeks	Skrotum	LH
-	-	-	-	1679g/d   95 (24)	-	372mm (D2)	1.18

VERKOPER OPMERKINGS: Lang bul met uitstekende vel en haar met breë sterk rug. Goeie vleis eienskappe. Ouma het TKP van 380/6. Bul met goeie geboorte, melk, groei en skrotum omtrek teelwaardes.

## LOT 13 (M)



## BH 200047

BLACK HILLS PUMA



Kuddeboek	SP
Geb. dtm	2020-10-07
Oud.	3 jaar
Inteling	1%
DNS	U2823U045

BH 170083 Pch  
BLACK HILLS JOULE  
Spn Mat. 105

Ouerskap	Vaar	Moer
DNS	✓	✓
Genomies		

BH 170181  
BLACK HILLS POPPIE A5  
Oud. 5j | OEK 36m | TKP 380d  
Kalwers 3 | Gespeen 3 | Spn. Mat. 91  
Gem. SI 93 | CCB 8.23 | CCW 37  
Kalwings: 20-10, 21-11, 22-11

BH 140401  
BLACK HILLS SUPER  
Spn Mat. 104

BH 150053  
BLACK HILLS JASMYN 1  
Oud. 8j | OEK 25m | TKP 338d  
Kalwers 6 | Gespeen 5  
Gem. SI 101 | Spn. Mat. 104

HN 130186 HH  
HYMGERT VV13186  
Spn Mat. 96

BH 140432  
BLACK HILLS POPPIE 5  
Oud. 3j | OEK 35m | TKP -  
Kalwers 1 | Gespeen 1  
Gem. SI 108 | Spn. Mat. 102

BH 110112  
BLACK HILLS BISMARCK 2  
BH 110125  
BLACK HILLS SIMBA 7  
Oud. 11j | Gem. SI 102  
Kalwers 9 | Gespeen 9  
BF 110011  
BLACK FOX 11 11  
BH 120007  
BLACK HILLS 1207  
Oud. 4j | Gem. SI 110  
Kalwers 2 | Gespeen 2  
F 100015  
FRELON X1015  
HN 070116  
HYMGERT VV 07116  
Oud. 6j | Gem. SI 96  
Kalwers 4 | Gespeen 4  
BF 090018  
BLACK FOX 09 018  
BH 010006  
BH0106  
Oud. 14j | Gem. SI 103  
Kalwers 5 | Gespeen 5

### BLACK HILLS DRAKENSBERGERS



Potchefstroom, North  
West  
0832578511  
willie@blackhills.co.za

POSBUS 19792, NOORDBRUG, 2522



#### Miostatien

Q204X	Nie Getoets
NT821	Skoon
F94L	Nie Getoets

#### KOEIWAARDE 102

88	Kalfgemak Waarde
116	Kalfgroei Waarde
96	Melk Waarde
-	Onderhoudswaarde
95	Vrugbaarheidswaarde

#### GROEI WAARDE 108

#### KARKAS WAARDE 111

#### PRODUKSIE WAARDE 103

Geb. Gewig	205D Gewig	365D Gewig	540D Gewig	GDT Indeks	VOV Indeks	Skrotum	LH
39kg	232kg   107 (18)	-	-	1762g/d   100 (24)	-	342mm (D2)	1.17

VERKOPER OPMERKINGS: Lang breë bul met goeie vleis eienskappe. Moer het 'n TKP van 380/3 en oma het TKP van 338/6. Bul met baie goeie teelwaardes.

## LOT 14 (M)



## BH 200096

BLACK HILLS KEISER III



Herd Book	SP
Birth date	2020-11-19
Age	2.9 years
Inbreeding	1%
DNA	U311U011

**BH 160021**  
BLACK HILLS CHRIS  
Wean Mat. 101

Parentage	Sire	Dam
DNA	✓	✓
Genomic		

**BH 130331**  
BLACK HILLS KLAVER 5  
Age 8y | AFC 34m | ICP 378d  
Calves 6 | Weaned 5 | Wean Mat. 108  
Avg. WI 101 | CCB 7.79 | CCW 39.1  
Calvings: 16-09, 17-10, 18-11, 19-11, 20-11, 21-11

**BH 110117**  
BLACK HILLS PATROON  
Wean Mat. 111

**BH 130324**  
BLACK HILLS CARINA 6  
Age 4y | AFC 34m | ICP 372d  
Calves 2 | Weaned 2  
Avg. WI 102 | Wean Mat. 92

**BF 090018**  
BLACK FOX 09 018  
Wean Mat. 99

**BH 010001**  
BH0101  
Age 13y | AFC - | ICP 348d  
Calves 6 | Weaned 6  
Avg. WI 108 | Wean Mat. 107

**CL 040048**  
GRASMUNT KOK 2  
**BH 030001**  
BH0301  
Age 15y | Avg. WI 98  
Calves 9 | Weaned 8  
**L 050032**  
NELLO LE GRANGE  
**M 060027**  
MSF- LEONARA-LESSON  
Age 8y | Avg. WI 105  
Calves 7 | Weaned 5  
**BV 020370**  
BUFFALO-VALLEY NORMAN  
**BF 03002A**  
BLACK FOX 0302 A  
Age 8y | Avg. WI 99  
Calves 5 | Weaned 5

## BLACK HILLS DRAKENSBERGERS



Potchefstroom, North  
West  
0832578511  
willie@blackhills.co.za

POSBUS 19792, NOORDBRUG, 2522



Myostatin	
Q204X	Not Tested
NT821	Free
F94L	Not Tested

COW VALUE 77	
97	Calving Ease Value
91	Calf Growth Value
107	Milk Value
-	Maintenance Value
74	Fertility Value
GROWTH VALUE 90	
CARCASS VALUE 94	
PRODUCTION VALUE 77	

Birth Weight	205D Weight	365D Weight	540D Weight	ADG Index	FCR Index	Scrotum	LH
35kg	199kg   96 (25)	-	-	1679g/d   100 (24)	-	319mm (D2)	1.19

SELLER REMARKS: Lang manlike bul. Moer het TKP van 378/6, Oumas het TKP van 372/2 en 348/6. Goeie geboorte, melk, speen en skrotum teelwaarde.

## LOT 15 (M)



## BH 200002

BLACK HILLS ATOOM III



Herd Book	SP
Birth date	2020-09-03
Age	3.1 years
Inbreeding	6%
DNA	U2823U002

**BH 170027 HH**  
BLACK HILLS ANKER  
Wean Mat. 105

Parentage	Sire	Dam
DNA	✓	✓
Genomic		

**BH 150005**  
BLACK HILLS AE15005  
Age 8y | AFC 37m | ICP 381d  
Calves 5 | Weaned 5 | Wean Mat. 122  
Avg. WI 104 | CCB 7.97 | CCW 45  
Calvings: 18-09, 19-09, 20-09, 21-10, 22-11

**HN 130186 HH**  
HYMGERT VV13186  
Wean Mat. 96

**BH 140402**  
BLACK HILLS ASTER A1  
Age 9y | AFC 36m | ICP 380d  
Calves 6 | Weaned 6  
Avg. WI 97 | Wean Mat. 109

**CL 040048**  
GRASMUNT KOK 2  
Wean Mat. 121

**BH 120202**  
BLACK HILLS AE12202  
Age 4y | AFC 37m | ICP 391d  
Calves 2 | Weaned 2  
Avg. WI 97 | Wean Mat. 102

**F 100015**  
FRELON X1015  
**HN 070116**  
HYMGERT VV 07116  
Age 6y | Avg. WI 96  
Calves 4 | Weaned 4  
**BH 110112**  
BLACK HILLS BISMARCK 2  
**BH 110120**  
BLACK HILLS ASTER 1  
Age 12y | Avg. WI 102  
Calves 9 | Weaned 9  
**CL 010065**  
GRASMUNT PAKKER  
**CL 000018**  
GRASMUNT KOFFIE 2 A  
Age 5y | Avg. WI 108  
Calves 2 | Weaned 2  
**F 080020**  
FRELON L0820  
**HN 090036**  
HYMGERT AE0936  
Age 11y | Avg. WI 105  
Calves 9 | Weaned 8

## BLACK HILLS DRAKENSBERGERS



Potchefstroom, North  
West  
0832578511  
willie@blackhills.co.za

POSBUS 19792, NOORDBRUG, 2522



Myostatin	
Q204X	Not Tested
NT821	Free
F94L	Not Tested

COW VALUE 86	
120	Calving Ease Value
83	Calf Growth Value
115	Milk Value
-	Maintenance Value
74	Fertility Value
GROWTH VALUE 100	
CARCASS VALUE 91	
PRODUCTION VALUE 87	

Birth Weight	205D Weight	365D Weight	540D Weight	ADG Index	FCR Index	Scrotum	LH
31kg	194kg   96 (25)	-	-	1857g/d   105 (24)	-	390mm (D2)	1.18

SELLER REMARKS: Manlike bul met lang breë rug. Moer het TKP van 381/5, Ouma het TKP van 380/6. Lae geboorte gewig, goeie melk en groei teelwaarde asook skrotum omtrek.





## LOT 16 (M)



## BH 200106

BLACK HILLS STREEPSAK II



Kuddeboek	B
Geb. dtm	2020-12-01
Oud.	2.8 jaar
Inteling	0%
DNS	U3111U019

### BLACK HILLS DRAKENSBERGERS



Potchefstroom, North  
West  
0832578511  
willie@blackhills.co.za

POSBUS 19792, NOORDBRUG, 2522

### KOEIWAARDE 97

96	Kalfgemak Waarde
102	Kalfgroei Waarde
114	Melk Waarde
-	Onderhoudswaarde
87	Vrugbaarheidswaarde

### GROEI WAARDE 109

### KARKAS WAARDE 109

### PRODUKSIE WAARDE 99



#### Miostatien

Q204X	Nie Getoets
NT821	Skoon
F94L	Nie Getoets

VERKOPER OPMERKINGS: Bul met goeie balans, vel en haar asook mooi manlike kop. Moer het TKP van 387/5 en Ouma met TKP van 372/2. Bul met uitsonderlike teelwaardes.

BH 160021  
BLACK HILLS CHRIS  
Spn Mat. 101

Ouerskap	Vaar	Moer
DNS	✓	
Genomies		

BH 140328  
BLACK HILLS BH140328

Oud. 7j | OEK - | TKP 387d  
Kalwers 5 | Gespeen 4 | Spn. Mat. 129  
Gem. SI 112 | CCB 6.5 | CCW 37  
Kalwings: 17-08, 18-09, 19-12,  
20-12, 21-11

BH 110117  
BLACK HILLS PATROON  
Spn Mat. 111

BH 130324  
BLACK HILLS CARINA 6  
Oud. 4j | OEK 34m | TKP 372d  
Kalwers 2 | Gespeen 2  
Gem. SI 102 | Spn. Mat. 92

CL 040048  
GRASMUNT KOK 2  
BH 030001  
BH0301  
Oud. 15j | Gem. SI 98  
Kalwers 9 | Gespeen 8  
L 050032  
NELLO LE GRANGE  
M 060027  
MSF- LEONARA-LESSON  
Oud. 8j | Gem. SI 105  
Kalwers 7 | Gespeen 5



EBV Analise 2023-07-19

Kalf en Moeder					Vrugbaarheid		
Geb. Dir.	Geb. Mat.	Spn. Dir.	Spn. Mat.	Skr. Omtr.	Vers Vrugb.	Koei Vrugb.	Lanklev.
99	92	102	114	132	-	-	89
73%	51%	69%	48%	73%			40%

Na-Speen Groei			Raam			Karkas		
Na-Speen	GDT	VOV	Volw. Gewig	Hoogte	Lengte	OSO	Vet	Mar
103	109	-	-	106	107	106	73	144
52%	64%			75%	72%	67%	61%	60%

Geb. Gewig	205D Gewig	365D Gewig	540D Gewig	GDT Indeks	VOV Indeks	Skrotum	LH
39kg	243kg   120 (25)	-	-	1893g/d   112 (24)	-	350mm (D2)	1.16

## LOT 17 (M)



## BH 200070

BLACK HILLS VOORSLAG IV



Kuddeboek	B
Geb. dtm	2020-10-27
Oud.	2.9 jaar
Inteling	0%
DNS	U2823U068

### BLACK HILLS DRAKENSBERGERS



Potchefstroom, North  
West  
0832578511  
willie@blackhills.co.za

POSBUS 19792, NOORDBRUG, 2522

### KOEIWAARDE 90

106	Kalfgemak Waarde
90	Kalfgroei Waarde
117	Melk Waarde
-	Onderhoudswaarde
86	Vrugbaarheidswaarde

### GROEI WAARDE 98

### KARKAS WAARDE 103

### PRODUKSIE WAARDE 90



#### Miostatien

Q204X	Nie Getoets
NT821	Skoon
F94L	Nie Getoets

VERKOPER OPMERKINGS: Mooi balans tussen lengte en breedte met baie sterk rug en goeie agterkwart. Moer het TKP van 379/6 en Ouma met TKP van 372/2. Gebalanseerde teelwaades.

BH 160021  
BLACK HILLS CHRIS  
Spn Mat. 101

Ouerskap	Vaar	Moer
DNS	✓	
Genomies		

BH 140381  
BLACK HILLS BH140381

Oud. 9j | OEK - | TKP 379d  
Kalwers 6 | Gespeen 6 | Spn. Mat. 130  
Gem. SI 105 | CCB 6.89 | CCW 43.7  
Kalwings: 17-08, 18-08, 19-09,  
20-10, 21-11, 22-10

BH 110117  
BLACK HILLS PATROON  
Spn Mat. 111

BH 130324  
BLACK HILLS CARINA 6  
Oud. 4j | OEK 34m | TKP 372d  
Kalwers 2 | Gespeen 2  
Gem. SI 102 | Spn. Mat. 92

CL 040048  
GRASMUNT KOK 2  
BH 030001  
BH0301  
Oud. 15j | Gem. SI 98  
Kalwers 9 | Gespeen 8  
L 050032  
NELLO LE GRANGE  
M 060027  
MSF- LEONARA-LESSON  
Oud. 8j | Gem. SI 105  
Kalwers 7 | Gespeen 5



EBV Analise 2023-07-19

Kalf en Moeder					Vrugbaarheid		
Geb. Dir.	Geb. Mat.	Spn. Dir.	Spn. Mat.	Skr. Omtr.	Vers Vrugb.	Koei Vrugb.	Lanklev.
113	87	90	117	144	-	-	91
74%	52%	71%	51%	74%			41%

Na-Speen Groei			Raam			Karkas		
Na-Speen	GDT	VOV	Volw. Gewig	Hoogte	Lengte	OSO	Vet	Mar
93	98	-	-	94	99	101	100	120
52%	66%			76%	73%	68%	63%	62%

Geb. Gewig	205D Gewig	365D Gewig	540D Gewig	GDT Indeks	VOV Indeks	Skrotum	LH
32kg	215kg   107 (25)	-	-	1786g/d   101 (24)	-	397mm (D2)	1.19

## LOT 19 (M)



## BH 200073

BLACK HILLS DAPPER II



Herd Book	B
Birth date	2020-11-07
Age	2.9 years
Inbreeding	9%
DNA	U2823U071

### BLACK HILLS DRAKENSBERGERS



Potchefstroom, North  
West  
0832578511  
willie@blackhills.co.za

POSBUS 19792, NOORDBRUG, 2522



#### Myostatin

Q204X	Not Tested
NT821	Free
F94L	Not Tested

COW VALUE 96	
121	Calving Ease Value
96	Calf Growth Value
96	Milk Value
-	Maintenance Value
88	Fertility Value
GROWTH VALUE 92	
CARCASS VALUE 92	
PRODUCTION VALUE 95	

Birth Weight	205D Weight	365D Weight	540D Weight	ADG Index	FCR Index	Scrotum	LH
33kg	216kg   101 (18)	-	-	1774g/d   102 (24)	-	349mm (D2)	1.19

SELLER REMARKS: Breë, vroegryp bul met baie kapasiteit, goeie balans en sterk agterkwart. Moer het TKP van 326/2, Oumas het TKP van 319/2 en 380/6. Baie goeie teelwaardes vir geboorte, melk, speen, groei en skrotum. In stoet kudde gebruik.

**BH 170027 HH**  
BLACK HILLS ANKER  
Wean Mat. 105

Parentage	Sire	Dam
DNA	✓	✓
Genomic		

**BH 160032**  
BLACK HILLS DEEMER 2H4A3  
Age 4y | AFC - | ICP 326d  
Calves 2 | Weaned 2 | Wean Mat. 85  
Avg. WI 97 | CCB 6.89 | CCW 34.3  
Calvings: 19-12, 20-11

**HN 130186 HH**  
HYMGERT VV13186  
Wean Mat. 96

**BH 140402**  
BLACK HILLS ASTER A1  
Age 9y | AFC 36m | ICP 380d  
Calves 6 | Weaned 6  
Avg. WI 97 | Wean Mat. 109

**BH 110112**  
BLACK HILLS BISMARCK 2  
Wean Mat. 105

**BH 120212**  
BLACK HILLS DEEMER H4A3  
Age 4y | AFC 38m | ICP 319d  
Calves 2 | Weaned 1  
Avg. WI 58 | Wean Mat. 65

**F 100015**  
FRELON X1015  
HN 070116  
HYMGERT VV 07116  
Age 6y | Avg. WI 96  
Calves 4 | Weaned 4  
**BH 110112**  
BLACK HILLS BISMARCK 2  
**BH 110120**  
BLACK HILLS ASTER 1  
Age 12y | Avg. WI 102  
Calves 9 | Weaned 9  
**CL 040048**  
GRASMUNT KOK 2  
**CL 040051**  
GRASMUNT RIETA 3  
Age 14y | Avg. WI 99  
Calves 11 | Weaned 9  
**CL 080044**  
GRASMUNT PANNA 2  
BV 020031  
BUFFALO-VALLEY DEEMER 4A3  
Age 10y | Avg. WI 102  
Calves 8 | Weaned 7

**LOGIX**  
GENETICS  
EBV Analysis 2023-07-19

Calf and Mother				Fertility			
Birth Dir.	Birth Mat.	Wean Dir.	Wean Mat.	Scr. Circ.	Heifer Fert.	Cow Fert.	Longev.
116	110	96	96	108	-	-	109
74%	48%	70%	50%	74%			44%

Post-Wean Growth			Frame			Carcass		
Post Wean	ADG	FCR	Mature Weight	Height	Length	EMA	Fat	Mar
95	94	-	-	61	76	89	70	63
57%	66%			76%	73%	68%	63%	62%

## LOT 20 (M)



## BH 200078

BLACK HILLS NOVEMBER II



Herd Book	SP
Birth date	2020-11-06
Age	2.9 years
Inbreeding	1%
DNA	U2823U076

### BLACK HILLS DRAKENSBERGERS



Potchefstroom, North  
West  
0832578511  
willie@blackhills.co.za

POSBUS 19792, NOORDBRUG, 2522



#### Myostatin

Q204X	Not Tested
NT821	Free
F94L	Not Tested

COW VALUE 80	
91	Calving Ease Value
103	Calf Growth Value
101	Milk Value
-	Maintenance Value
84	Fertility Value
GROWTH VALUE 97	
CARCASS VALUE 104	
PRODUCTION VALUE 82	

Birth Weight	205D Weight	365D Weight	540D Weight	ADG Index	FCR Index	Scrotum	LH
34kg	210kg   103 (25)	-	-	1381g/d   79 (24)	-	350mm (D2)	1.17

SELLER REMARKS: Goeie bou en breë rug met balans. Moer het TKP van 381/5, Oumas het TKP van 404/3 en 377/9. Gebalanseerde teelwaardes.

**EMB 170246 HH**  
EMBEE SUPER 4  
Wean Mat. 85

Parentage	Sire	Dam
DNA	✓	✓
Genomic		

**BH 150045**  
BLACK HILLS NAARTJIE 1  
Age 8y | AFC 36m | ICP 381d  
Calves 5 | Weaned 4 | Wean Mat. 113  
Avg. WI 103 | CCB 7.32 | CCW 33.9  
Calvings: 18-09, 19-11, 20-11, 21-12, 22-11

**EMB 140176 HH**  
EMBEE RENOSTER 2  
Wean Mat. 84

**EMB 100103 HH**  
EMBEE INGRET 4  
Age 13y | AFC 35m | ICP 392d  
Calves 10 | Weaned 9  
Avg. WI 100 | Wean Mat. 87

**CL 040048**  
GRASMUNT KOK 2  
Wean Mat. 121

**BH 120013**  
BLACK HILLS 1213  
Age 5y | AFC - | ICP 404d  
Calves 3 | Weaned 3  
Avg. WI 94 | Wean Mat. 97

**EMB 110087**  
EMBEE PRINS 1  
**EMB 080022**  
EMBEE LEA 1  
Age 9y | Avg. WI 113  
Calves 6 | Weaned 5  
**BJ 060060**  
MAMBANE BASJAN  
**EMB 000142**  
EMBEE INGRET  
Age 10y | Avg. WI 101  
Calves 8 | Weaned 8  
**CL 010065**  
GRASMUNT PAKKER  
**CL 000018**  
GRASMUNT KOFFIE 2 A  
Age 5y | Avg. WI 108  
Calves 2 | Weaned 2

**LOGIX**  
GENETICS  
EBV Analysis 2023-07-19

Calf and Mother				Fertility			
Birth Dir.	Birth Mat.	Wean Dir.	Wean Mat.	Scr. Circ.	Heifer Fert.	Cow Fert.	Longev.
102	78	103	101	113	-	-	107
74%	48%	70%	50%	73%			43%

Post-Wean Growth			Frame			Carcass		
Post Wean	ADG	FCR	Mature Weight	Height	Length	EMA	Fat	Mar
106	95	-	-	83	90	103	113	81
56%	64%			75%	71%	66%	60%	58%



## LOT 21 (M)



## BH 200060

BLACK HILLS YANKIE III



DRAKENSBERGER  
STOET

### BLACK HILLS DRAKENSBERGERS



Potchefstroom, North  
West  
0832578511  
willie@blackhills.co.za

POSBUS 19792, NOORDBRUG, 2522



#### Miostation

Q204X	Nie Getoets
NT821	Skoon
F94L	Nie Getoets

Kuddeboek	B
Geb. dtm	2020-10-14
Oud.	3 jaar
Inteling	0%
DNS	U2823U058

#### KOEIWAARDE 75

106	Kalfgemak Waarde
82	Kalfgroei Waarde
97	Melk Waarde
-	Onderhoudswaarde
84	Vrugbaarheidswaarde

#### GROEI WAARDE 77

#### KARKAS WAARDE 76

#### PRODUKSIE WAARDE 73

Geb. Gewig	205D Gewig	365D Gewig	540D Gewig	GDT Indeks	VOV Indeks	Skrotum	LH
35kg	193kg   93 (25)	-	-	1619g/d   91 (24)	-	351mm (D2)	1.18

VERKOPER OPMERKINGS: Gladde, lang bul met 'n breë sterk rug. Moer het TKP van 368/8, Ouma het TKP van 372/2.

BH 160021  
BLACK HILLS CHRIS  
Spn Mat. 101

Ouerskap	Vaar	Moer
DNS	✓	
Genomies		

BH 090126  
BLACK HILLS AB09126

Oud. 14j | OEK - | TKP 368d  
Kalwers 8 | Gespeen 7 | Spn. Mat. 93  
Gem. SI 97 | CCB 7.71 | CCW 38  
Kalwings: 15-12, 16-12, 17-11, 18-10,  
19-12, 20-10, 21-11, 22-12



EBV Analise 2023-07-19

BH 110117  
BLACK HILLS PATROON  
Spn Mat. 111

BH 130324  
BLACK HILLS CARINA 6  
Oud. 4j | OEK 34m | TKP 372d  
Kalwers 2 | Gespeen 2  
Gem. SI 102 | Spn. Mat. 92

CL 040048  
GRASMUNT KOK 2  
BH 030001  
BH0301  
Oud. 15j | Gem. SI 98  
Kalwers 9 | Gespeen 8  
L 050032  
NELLO LE GRANGE  
M 060027  
MSF- LEONARA-LESSON  
Oud. 8j | Gem. SI 105  
Kalwers 7 | Gespeen 5

Kalf en Moeder				Vrugbaarheid			
Geb. Dir.	Geb. Mat.	Spn. Dir.	Spn. Mat.	Skr. Omtr.	Vers Vrugb.	Koei Vrugb.	Lanklew.
106	98	82	97	106	-	-	85
74%	53%	71%	51%	74%			41%

Na-Speen Groei			Raam			Karkas		
Na-Speen	GDT	VOV	Volw. Gewig	Hoogte	Lengte	OSO	Vet	Mar
78	68	-	-	79	82	98	55	109
52%	65%			75%	72%	67%	61%	60%

## LOT 22 (M)



## BH 200086

BLACK HILLS HANNES III



DRAKENSBERGER  
STOET

### BLACK HILLS DRAKENSBERGERS



Potchefstroom, North  
West  
0832578511  
willie@blackhills.co.za

POSBUS 19792, NOORDBRUG, 2522



#### Miostation

Q204X	Nie Getoets
NT821	Skoon
F94L	Nie Getoets

Kuddeboek	B
Geb. dtm	2020-11-10
Oud.	2.9 jaar
Inteling	0%
DNS	U2823U080

#### KOEIWAARDE 81

83	Kalfgemak Waarde
95	Kalfgroei Waarde
103	Melk Waarde
-	Onderhoudswaarde
86	Vrugbaarheidswaarde

#### GROEI WAARDE 83

#### KARKAS WAARDE 87

#### PRODUKSIE WAARDE 79

Geb. Gewig	205D Gewig	365D Gewig	540D Gewig	GDT Indeks	VOV Indeks	Skrotum	LH
42kg	212kg   100 (25)	-	-	1595g/d   91 (24)	-	357mm (D2)	1.19

VERKOPER OPMERKINGS: Manlike bul met goeie skof. Moer het TKP van 374/8, Ouma het TKP van 372/2.

BH 160021  
BLACK HILLS CHRIS  
Spn Mat. 101

Ouerskap	Vaar	Moer
DNS	✓	
Genomies		

BH 100143  
BLACK HILLS W10143

Oud. 13j | OEK - | TKP 374d  
Kalwers 8 | Gespeen 6 | Spn. Mat. 106  
Gem. SI 98 | CCB 6.83 | CCW 32.8  
Kalwings: 15-09, 16-12, 17-10,  
18-10, 19-11, 20-11, 21-11, 22-11



EBV Analise 2023-07-19

BH 110117  
BLACK HILLS PATROON  
Spn Mat. 111

BH 130324  
BLACK HILLS CARINA 6  
Oud. 4j | OEK 34m | TKP 372d  
Kalwers 2 | Gespeen 2  
Gem. SI 102 | Spn. Mat. 92

CL 040048  
GRASMUNT KOK 2  
BH 030001  
BH0301  
Oud. 15j | Gem. SI 98  
Kalwers 9 | Gespeen 8  
L 050032  
NELLO LE GRANGE  
M 060027  
MSF- LEONARA-LESSON  
Oud. 8j | Gem. SI 105  
Kalwers 7 | Gespeen 5

Kalf en Moeder				Vrugbaarheid			
Geb. Dir.	Geb. Mat.	Spn. Dir.	Spn. Mat.	Skr. Omtr.	Vers Vrugb.	Koei Vrugb.	Lanklew.
89	87	95	103	117	-	-	91
74%	54%	71%	52%	73%			42%

Na-Speen Groei			Raam			Karkas		
Na-Speen	GDT	VOV	Volw. Gewig	Hoogte	Lengte	OSO	Vet	Mar
92	76	-	-	80	89	95	61	129
54%	64%			75%	72%	67%	61%	60%



## LOT 23 (M)



## BH 200080

BLACK HILLS KATROL



DRAKENSBERGER  
STOET

### BLACK HILLS DRAKENSBERGERS



Potchefstroom, North

West  
0832578511

willie@blackhills.co.za

POSBUS 19792, NOORDBRUG, 2522

Herd Book	SP
Birth date	2020-11-07
Age	2.9 years
Inbreeding	8%
DNA	U2823U077

#### COW VALUE 72

85	Calving Ease Value
97	Calf Growth Value
114	Milk Value
-	Maintenance Value
65	Fertility Value

#### GROWTH VALUE 110

#### CARCASS VALUE 103

#### PRODUCTION VALUE 77

Birth Weight	205D Weight	365D Weight	540D Weight	ADG Index	FCR Index	Scrotum	LH
41kg	210kg   99 (25)	-	-	1786g/d   102 (24)	-	386mm (D2)	1.21



#### Myostatin

Q204X	Not Tested
NT821	Free
F94L	Not Tested

SELLER REMARKS: Manlike bul met goeie kapasiteit, rug en sak. Moer het TKP van 376/7, Oumas het TKP van 372/2 en 373/9. Baie goeie en gebalanseerde teelwaardes.

BH 160021  
BLACK HILLS CHRIS  
Wean Mat. 101

Parentage	Sire	Dam
DNA	✓	✓
Genomic		

BH 130310  
BLACK HILLS KLARADYN 2  
Age 10y | AFC 35m | ICP 376d  
Calves 7 | Weaned 6 | Wean Mat. 123  
Avg. WI 105 | CCB 7.01 | CCW 40.2

Calvings: 16-08, 17-08, 18-09,  
19-11, 20-11, 21-11, 22-11

BH 110117  
BLACK HILLS PATROON  
Wean Mat. 111

BH 130324  
BLACK HILLS CARINA 6  
Age 4y | AFC 34m | ICP 372d  
Calves 2 | Weaned 2  
Avg. WI 102 | Wean Mat. 92

CL 040048  
GRASMUNT KOK 2  
Wean Mat. 121

JA 020106  
JATRO 02106

Age 12y | AFC - | ICP 373d  
Calves 9 | Weaned 8  
Avg. WI 101 | Wean Mat. 118

CL 040048  
GRASMUNT KOK 2  
BH 030001  
BH0301  
Age 15y | Avg. WI 98  
Calves 9 | Weaned 8  
L 050032  
NELLO LE GRANGE  
M 060027  
MSF- LEONARA-LESSON  
Age 8y | Avg. WI 105  
Calves 7 | Weaned 5  
CL 010065  
GRASMUNT PAKKER  
CL 000018  
GRASMUNT KOFFIE 2 A  
Age 5y | Avg. WI 108  
Calves 2 | Weaned 2

LOGIX  
Genomic Breeding Value  
Analysis 2023-07-19

Calf and Mother				Fertility			
Birth Dir.	Birth Mat.	Wean Dir.	Wean Mat.	Scr. Circ.	Heifer Fert.	Cow Fert.	Longev.
92	85	97	114	145	78	-	89
76%	56%	73%	53%	75%	42%		48%

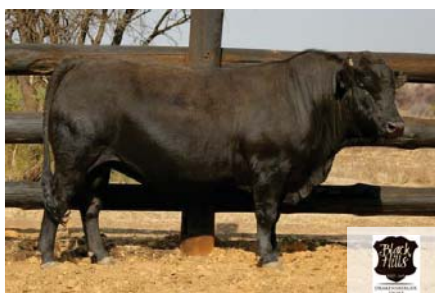
Post-Wean Growth			Frame			Carcass		
Post Wean	ADG	FCR	Mature Weight	Height	Length	EMA	Fat	Mar
100	109	-	-	93	104	114	61	134
60%	67%			76%	73%	69%	64%	62%

## LOT 24 (M)



## BH 200036 HH

BLACK HILLS ANKER II



Herd Book	SP
Birth date	2020-09-28
Age	3 years
Inbreeding	6%
DNA	U2823U034

#### COW VALUE 109

122	Calving Ease Value
95	Calf Growth Value
103	Milk Value
114	Maintenance Value
93	Fertility Value

#### GROWTH VALUE 104

#### CARCASS VALUE 102

#### PRODUCTION VALUE 108

Birth Weight	205D Weight	365D Weight	540D Weight	ADG Index	FCR Index	Scrotum	LH
32kg	207kg   103 (25)	-	-	1905g/d   108 (24)	-	343mm (D2)	1.22



#### Myostatin

Q204X	Free
NT821	Free
F94L	Free

SELLER REMARKS: Bul met goeie kapasiteit en 'n skoon onderlyn. 'n Lengte hoogte verhouding van 1.22. Moer het TKP van 380/6, Oumas het TKP van 372/2 en 370/9. Bul het goeie gebalanseerde teelwaardes. In kommersiële kudde gebruik.

BH 160021  
BLACK HILLS CHRIS  
Wean Mat. 101

Parentage	Sire	Dam
DNA	✓	✓
Genomic		

BH 140402  
BLACK HILLS ASTER AI  
Age 9y | AFC 36m | ICP 380d  
Calves 6 | Weaned 6 | Wean Mat. 109  
Avg. WI 97 | CCB 6.74 | CCW 44.2

Calvings: 17-08, 18-09, 19-10,  
20-09, 21-10, 22-11

BH 110117  
BLACK HILLS PATROON  
Wean Mat. 111

BH 130324  
BLACK HILLS CARINA 6  
Age 4y | AFC 34m | ICP 372d  
Calves 2 | Weaned 2  
Avg. WI 102 | Wean Mat. 92

BH 110112  
BLACK HILLS BISMARCK 2  
Wean Mat. 105

BH 110120  
BLACK HILLS ASTER 1

Age 12y | AFC 35m | ICP 370d  
Calves 9 | Weaned 9  
Avg. WI 102 | Wean Mat. 107

CL 040048  
GRASMUNT KOK 2  
BH 030001  
BH0301  
Age 15y | Avg. WI 98  
Calves 9 | Weaned 8  
L 050032  
NELLO LE GRANGE  
M 060027  
MSF- LEONARA-LESSON  
Age 8y | Avg. WI 105  
Calves 7 | Weaned 5  
CL 040048  
GRASMUNT KOK 2  
CL 040051  
GRASMUNT RIETA 3  
Age 14y | Avg. WI 99  
Calves 11 | Weaned 9  
JA 080014  
JATRO JA080014  
BH 020001  
BH020001  
Age 14y | Avg. WI 95  
Calves 6 | Weaned 6

LOGIX  
Genomic Breeding Value  
Analysis 2023-07-19

Calf and Mother				Fertility			
Birth Dir.	Birth Mat.	Wean Dir.	Wean Mat.	Scr. Circ.	Heifer Fert.	Cow Fert.	Longev.
123	101	95	103	121	92	93	103
78%	62%	76%	61%	78%	54%	48%	58%

Post-Wean Growth			Frame			Carcass		
Post Wean	ADG	FCR	Mature Weight	Height	Length	EMA	Fat	Mar
98	108	103	88	95	106	110	62	93
66%	72%	47%	52%	79%	77%	73%	69%	69%



Dier Info				Actual Values					Expected Breeding Values										Indices			Dam				
LOT	Animal ID	Sex	SEC	Birth Wt (kg)	205d Wt (kg)	CCB Ratio	CCW Ratio	Length Height Ratio	Scr. Circ. (mm)	Birth Dir (kg)	Birth Mat (kg)	Wean Dir (kg)	Wean Mat (kg)	Post Wean (kg)	Mature Weight. (kg)	ADG (g/d)	FCR (kg:kg)	Scr. Circ. (mm)	Height. (mm)	Length (mm)	Wean ADG	Scr. Circ.	Avg. Wean Index	Nr. Calves	Repr. Index	
Breed Average Auction Average																										
				36	213	7.42	41.2	1.18	-	0.13 -0.55	0.10 0.27	6.8 4.5	3.5 5.0	13 12	8 7	39 31	-33 -25	8.5 16.9	-6	4	103	99	117	101	6.0	110
1	BH 200079	M	B	24	194	6.8	36.5	1.17		-3.27	-0.21	-2.8	4.6	1.2	9.5	19	-35	-9.8	-9	-10	106	98	63	103	2	117
2	BH 200021	M	SP	36	202	8.02	40.5	1.19		-0.91	-0.50	1.3	4.0	5.6	8.0	-17	-14	5.9	-27	-22	92	99	95	97	3	106
3	BH 200033	M	SP	37	237	7.37	44.6	1.21		-0.38	0.15	10.7	2.5	16.9	18.5	-1	-8	13.5	-13	-0	111	93	110	102	9	111
4	BH 200082	M	SP	34	225	7.64	44.4	1.03		-1.78	-0.60	1.8	3.0	7.4	2.7	10	-48	12.9	-14	-26	112	94	109	103	9	112
5	BH 190045	M	SP	33	237	7.4	53.4	1.20		-1.37	0.10	9.7	2.1	23.9	16.1	164	-89	23.9	15	27	104	117	131	102	9	110
6	BH 200012	M	B	38	178	6.86	33.7	1.21		0.18	0.94	3.3	8.6	10.0	15.4	8	-19	12.6	-9	2	100	92	108	106	8	116
7	BH 200110	M	B	39	219	7.28	35.6	1.21		0.10	0.17	3.7	5.0	10.4	2.9	41	-20	30	2	15	106	103	144	101	7	113
8	BH 200042	M	B	37	213	7.99	47.2	1.21		-0.43	-0.24	1.0	3.2	3.8	-3.4	-38	12	14	-12	-0	103	90	111	102	8	115
9	BH 190063	M	SP	38	227	7.97	46	1.20		1.05	1.38	14.8	7.8	29.6	18.8	152	-76	26.4	18	31	104	115	136	101	5	105
10	BH 200067	M	SP	39	216	9.7	44.6	1.20		-0.35	0.11	4.6	5.0	12.4	-9.9	42	-16	19.3	4	21	98	98	122	98	2	97
11	BH 200031	M	A	-	-	-	-	1.18		-0.38	-0.12	1.8	5.6	7.5	-2.5	32	-25	12.1	-3	3	-	95	107			-
13	BH 200047	M	SP	39	232	8.92	48.3	1.17		1.31	0.20	14.8	2.3	26.0	14.3	75	-34	19.2	10	23	107	100	122	93	3	101
14	BH 200096	M	SP	35	199	6.41	33.9	1.19		-0.50	0.88	2.4	5.9	10.5	4.4	-5	-6	12.1	-4	8	96	100	107	101	6	108
15	BH 200002	M	SP	31	194	7.11	46.9	1.18		-2.20	0.24	-1.5	8.4	4.9	0.6	35	-29	19.4	-9	-6	96	105	122	104	5	104
16	BH 200106	M	B	39	243	6.79	37	1.16		0.19	0.46	7.6	8.2	18.0	10.1	69	-43	24.4	3	13	120	112	132	112	5	111
17	BH 200070	M	B	32	215	5.82	39.8	1.19		-1.22	0.70	1.7	9.2	10.6	9.0	32	-25	30.2	-5	6	107	101	144	105	6	113
19	BH 200073	M	B	33	216	7.19	39.2	1.19		-1.53	-0.34	4.6	2.0	11.2	1.6	18	-23	12.4	-26	-14	101	102	108	97	2	125
20	BH 200078	M	SP	34	210	6.2	34.4	1.17		-0.09	1.05	8.3	3.8	19.4	22.0	22	-21	15.1	-12	-2	103	79	113	103	5	104
21	BH 200060	M	B	35	193	7.83	40.8	1.18		-0.52	0.18	-1.9	2.6	-2.1	0.3	-68	26	11.3	-14	-9	93	91	106	97	8	115
22	BH 200086	M	B	42	212	7.02	31.5	1.19		1.26	0.68	4.3	4.5	8.9	4.6	-40	15	16.6	-14	-4	100	91	117	98	8	114
23	BH 200080	M	SP	41	210	8.28	37	1.21		0.95	0.75	5.3	8.2	16.1	13.9	68	-32	30.5	-5	10	99	102	145	105	7	108
24	BH 200036	M	SP	32	207	7.22	50.1	1.22		-2.20	0.06	4.3	4.6	13.6	-2.8	64	-38	18.9	-4	12	103	108	121	97	6	106

**EXPLANATION OF CATALOGUE ABBREVIATIONS**
**VERDUIDELIKING VAN KATALOGUS AFKORTINGS**

Lot Number	LOT	LOT	Lot Nommer
Estimated breeding value	EBV	EBV	Beraamde teelwaarde
Parentage verification	Parentage	Ouerskap	Ouerskap verifikasie
Age in years	AGE	OUDE.	Ouderdom in jaar
Age at First Calving	AFC	OEK	Ouderdom met Eerst Kalwing
Intercalving Period	ICP	TKP	Tussen-Kalf Periode
Number of calvings	Calvings	Kalwings	Aantal kalwings
Number of calves weaned	Weaned	Gespeen	Aantal kalwers gespeen
Average Wean index	Avg. WI	Gem. SI	Gemiddelde speen indeks
Animal identification number	ID	ID	Dier se identifikasie nommer
Herd Book Section	SEC	AFD	Kuddeboek Afdeling
Herd Book Section: Pending Registration	PEN	PEN	Kuddeboek Afdeling: Wag vir Registrasie
Herd Book Section: Not for Registration	NFR	NFR	Kuddeboek Afdeling: Nie vir Registrasie
Herd Book Section: Foundation Generation	FO	FO	Kuddeboek Afdeling: Fondasie Generasie
Herd Book Section: Appendix A	A	A	Kuddeboek Afdeling: Aanhangsel A
Herd Book Section: Appendix B	B	B	Kuddeboek Afdeling: Aanhangsel B
Herd Book Section: Studbook Proper, a registered animal	SP	SP	Kuddeboek Afdeling: Studbook Proper, 'n geregistreerde dier
Genomically Tested	GT	GT	Genomies Getoets
Homozygous Horned (Celtic test)	HH(c)	HH(c)	Homosigoties horings (Celtic toets)
Homozygous Polled (Celtic test)	PP(c)	PP(c)	Homosigoties Poena (Celtic toets)
Heterozygous Polled (Celtic test)	Pp(c)	Pp(c)	Heterosigoties Poena (Celtic toets)
Phenotypically Polled	P	P	Fenotopies Poena
Birth Direct breeding value	Birth Dir.	Geb. Dir	Geboorte Direk teelwaarde
Wean Direct breeding value	Wean Dir.	Spn. Dir.	Speen Direk teelwaarde
Wean Maternal breeding value	Wean Mat.	SPn. Mat.	Speen Maternaal teelwaarde
Scrotal Circumference	Scr. Circ.	Skr. Omt.	Skrotum omtrek
Heifer Fertility	Heifer Fert.	Vers Vrugh.	Vers Vrughbaarheid
Cow Fertility	Cow Fert.	Koei Vrugh.	Koei Vrughbaarheid
Longevity	Longev.	Lankl.	Lanklewendheid
Mature Weight	Mat. Wt.	Volw. Gewig	Volwasse gewig
Average Daily Gain (g/day)	ADG	GDT	Gemiddelde Daaglikse Toename
Feed Conversion Ratio (kg:kg)	FCR	VOV	Voeromset Verhouding
Eye Muscle Area	EMA	OSO	Oogspier grootte
Backfat Thickness	Fat	Vet	Rugvet Diepte
Marbeling (intra-muscular fat)	Mar	Mar	Marmering (binne-spiersse vet)
Actual Birth weight	Birth Wt.	Geb. gewig	Werklike Geboorte gewig
205-day Dam-age corrected weight	205d Wt.	205d gewig	205-dag Moeder-ouderdom gekorrigeerde gewig
365-day weight index	365D Index	365D Indeks	365-dae gewig indeks
540-day weight index	540D Index	540D Indeks	540-dae gewig indeks
Length-Height ratio	LH	LH	Lengte-Hoogte Verhouding
Cow-Calf Birth Ratio	CCG	KKG	Koei-Kalf Geboorte Verhouding
Cow-Calf Wean Ratio	CCW	KKS	Koei-Kalf Speen Verhouding
Average Weaning Index	Avg. WI	Gem. SI	Gemiddelde speen indeks
Number of Calves	Nr. Calves	Aant. Kalw.	Aantal kalwers
Reproduction Index	Repr. Index	Repr. Indeks	Reproduksie indeks
Animal sex: M - Male, F - Female	M / F	M / V	Dier geslag: M - Manlik, V - Vroulik