



NATIONAL AUCTION

4 OCTOBER 2025 | 11.00 | BE HUMAN



JOVAAN CLOETE (AUCTIONEER) 079 575 0795
PIET WESSELS (BKB KROONSTAD) 082 857 7827
HENNIE GELDENHUYS (CHAIRMAN) 084 514 1607



heet u welkom by die

Nasionale Suffolk Veiling

04 Oktober 2025

te

BE HUMAN, BLOEMFONTEIN

Geniet die dag saam met ons!

ANIMAL, OWNER AND PEDIGREE INFORMATION

LOT 1 (F)

SUPER-SHEEP BREEDER
Pretoria, Gauteng
082 123 4680
lambchops@gmail.com

ABC 220001

Herd Book	SP
Birth date	2022-06-15
Age	1.3 jaar
Inbreeding	6.63%
Birth Stat.	3
AFL	12.4m
ILP	-
EPI	100
Lambled	1
Lambs	2
Weaned	0

ABC 190216 (2)

ABC 170012 (3)

ABC 160020

ABC 140197

ABC 110036

ABC 120001

ABC 130164

ABC 130073

ABC 130102

ABC 130064

ABC 140018

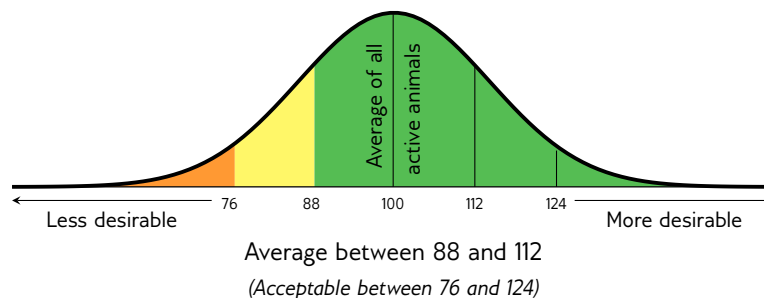
1. Lot Number & sex (mixed lots)
2. GT - animal is genomically tested
3. Animal's identification number
4. Animal's photo (or owner's logo)
5. Breed's logo
6. Animal's information
 - Herd book section
 - Birth date
 - Animal's age
 - Animal's inbreeding percentage
 - Birth status
7. Parentage Verification - a green tick (✓) indicates that the sire and/or dam has been verified via microsatellite (DNA) and/or Genomic testing
8. Owner's logo
9. QR code that links to animal's information on SASmallStock.co.za
10. Additional information (Ewes)
 - Age at first lambing, Interlambing Period, and Ewe Production Index
 - Number of times lambled, lambs born and lambs weaned
11. Additional information (Rams)
 - Number of progeny in the herd, total progeny and number of herds used
12. Owner's most recent Elite Award
13. Owner's information
14. Dam-line information
 - Age at First Lambing, Interlambing Period, and Ewe Production Index
 - Number of times lambled, lambs born and lambs weaned
15. Four (4) generation pedigree

EXPLANATION OF BREEDING VALUES AND SELECTION VALUES FOR SUFFOLK

Traits	Description/Measurement	Goal	General Guidelines					
			76	88	100	112	124	
Indices	1 Logix Merit Index	Total Merit Index	Balanced, profitable animals	Loss				Profit
	2 Growth Index	Direct and maternal growth potential	Adequate growth	Light			*	Heavy
	3 Reproduction Index	Overall ewe fertility	Fertile ewes	Poor				Good
Growth	4 Pre-Wean Direct	Pre-wean weight (lamb's ability)	Heavy lambs at pre-weaning	Light				Heavy
	5 Pre-Wean Maternal	Pre-wean weight (ewe's ability)	Good mothering ability	Poor			*	Good
	6 Weaning Weight Direct	Wean weight (lamb's ability)	Heavy weaner lambs	Light				Heavy
	7 Weaning Weight Maternal	Wean weight (ewe's ability)	Good mothering ability	Poor			*	Good
Fertility	8 Post-Wean Direct	Post-wean weight (lamb's ability)	Adequate post-wean growth	Light			*	Heavy
	9 Number of Lambs Weaned	Multiples at birth and good survival	Large number of lambs weaned	Few				Many
	10 Total Weight Weaned	Good survival and heavy weights	Heavy lambs weaned	Light				Heavy
	11 Age at First Lambing	Early sexual maturity	Fertile young ewes	Late				Early
	12 Interlambing Period	Early pregnancy in season	Fertile ewes	Long				Short

* Determined by own selection goal

INTERPRETATION OF BREEDING VALUE INDICES



SELECTION INDICES FOR SUFFOLK



1 L♀ GIX Merit Index

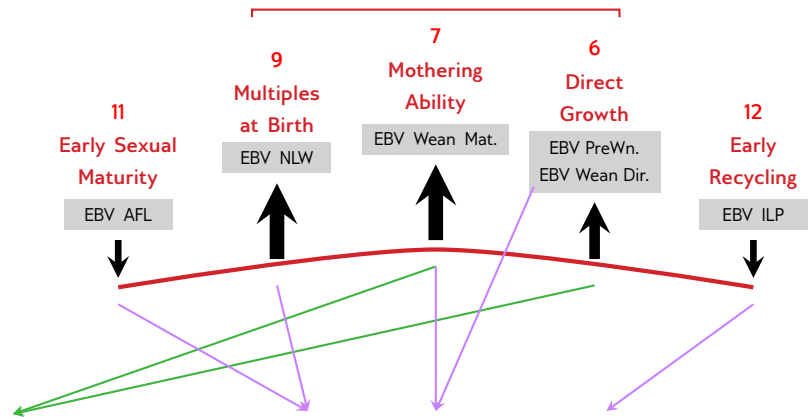
A total merit index for the breed for selection of balanced, profitable animals in both growth and reproduction.

2 Growth Index

Selection for:

- Fast growth potential
- Good maternal ability
- Heavy lambs at weaning
- Early market-readiness

Total Weight Weaned (10)



3 Reproduction Index

Selection for:

- Early sexual maturity
- Regular pregnancies
- Multiples at birth
- Good mothering ability
- Heavy lambs at weaning

GENETIC VALUES - BUILDING BLOCKS

Growth					Reproduction			
PreWn. Dir	PreWn. Mat.	Wn. Dir.	Wean Mat.	Post-Wn.	NLW	TWW	AFL	ILP
104	101	108	99	102	115	102	134	110
65%	51%	64%	45%	51%	52%	45%	36%	40%
4	5	6	7	8	9	10	11	12

The Logix Selection Indices are compiled of specific genetic building blocks, as indicated in the selection index descriptions above. These genetic building blocks are indicated in the catalogue by their Breeding Value indices and accuracies.

PHENOTYPIC VALUES

Birth Weight	Pre-Wean Weight	Wean Weight	Post-Wean Weight	Mature Weight
4kg	15.6kg (100)	20.5kg (80)	55.4kg (100)	88.5kg

Weights and phenotypic index as obtained within the animal's contemporary group

GROWTH TEST RESULTS

ADG Index	FCR Index	Scrotal Circumference
113	101	37mm

ADG en FCR index, and scrotal circumference, in mm, as measured during and at the end of the growth test



SUFFOLK NASIONALE VEILING

BE HUMAN, BLOEMFONTEIN 04 October 2025



LOT 1 (M)



VREDESIG FORBES

Darling, Western Cape
0825442336
wjjforbes@gmail.com

377 240020

MAJUBA DARK KNIGHT



Herd Book	SP
Birth date	2024-05-11
Age	1.4 years
Inbreeding	4.72%
Birth Stat.	2
Progeny	None

375 220016 (2)
MIDNIGHT RAM 375220016

Parentage Sire Dam	
DNA	
Genomic	✓

301 210048 (3)
TWEESEUNS OOI 301 210048
AFL 12.5 | ILP 471 | EPI 113
Lambd 3 | Lams 4 | Weaned 3

336 160043
CARMAR RAM 336160043
ALMAU RAM 284 110005
CARMAR OOI 336 130023
AFL 23.2 | ILP 366 | EPI 102
Lambd 5 | Lams 9 | Weaned 7

336 160062
CARMAR EWE 336160062
AFL 24.2 | ILP 406 | EPI 139
Lambd 7 | Lams 13 | Weaned 11
CARMAR RAM 336 120005
CARMAR OOI 336 130003
AFL 25.5 | ILP 365 | EPI 93
Lambd 5 | Lams 9 | Weaned 5

301 190016
TWEESEUNS RAM 301190016
TWEESEUNS EWE 301160075
AFL 23.1 | ILP 611 | EPI 102
Lambd 4 | Lams 7 | Weaned 7

301 140175
TWEESEUNS OOI 301 140175
AFL 24.3 | ILP 720 | EPI 101
Lambd 4 | Lams 8 | Weaned 8
TWEESEUNS RAM 301 100112
TWEESEUNS OOI 301 100167
AFL 35.6 | ILP 367 | EPI 106
Lambd 4 | Lams 8 | Weaned 6

Growth					Reproduction			
PreWn. Dir	PreWn. Mat.	Wn. Dir.	Wean Mat.	Post-Wn.	NLW	TWW	AFL	ILP
122	104	126	108	120	99	117	105	101
48%	39%	59%	35%	44%	33%	44%	28%	24%



Logix Merit Index	123
Growth Index	127
Reproduction Index	114

Birth Wt.	4.2kg
Pre-Wean	-
Wean Wt.	32.5kg (121)
Post-Wean	80.7kg (100)
Mature Wt.	110kg
ADG Ind.	-
FCR Ind.	-
Scrotum	-

SELLER REMARKS: Besondere gebalanseerde 'Midnight' seun met baie goeie BLUP waardes. Is self in stoet gebruik en n saad aandeel word terug gehou. Entings: Rev 1, Blu Vax, Glenvac 3 en Multivax P-Plus.

LOT 2 (M)



J.I. POTGIETER

Bothaville, Free State
0834517187
laneros1189@gmail.com

360 240021

JIP RAM 360240021



Herd Book	SP
Birth date	2024-06-18
Age	1.3 years
Inbreeding	6.41%
Birth Stat.	1
Progeny	None

360 220155 (1)
JIP RAM 360220155

Parentage Sire Dam
DNA
Genomic

336 180042 (2)
CARMAR EWE 336180042
AFL 22.8 | ILP 383 | EPI 118
Lambd 6 | Lams 8 | Weaned 6

301 200240
TWEESEUNS RAM 301 200240
TWEESEUNS OOI 301 150016
AFL 24.1 | ILP 420 | EPI 113
Lambd 7 | Lams 9 | Weaned 9

360 190090
JIP EWE 360190090
AFL 23.2 | ILP 363 | EPI 89
Lambd 4 | Lams 4 | Weaned 3
TWEESEUNS RAM 301170283
JIP OOI 360140302
AFL - | ILP 363 | EPI 99
Lambd 2 | Lams 3 | Weaned 3

336 160043
CARMAR RAM 336160043
ALMAU RAM 284 110005
CARMAR OOI 336 130023
AFL 23.2 | ILP 366 | EPI 102
Lambd 5 | Lams 9 | Weaned 7

336 100051
CARMAR OOI 336 100051
AFL - | ILP 366 | EPI 123
Lambd 8 | Lams 14 | Weaned 8

Growth					Reproduction			
PreWn. Dir	PreWn. Mat.	Wn. Dir.	Wean Mat.	Post-Wn.	NLW	TWW	AFL	ILP
123	99	118	102	109	75	91	106	113
62%	37%	61%	30%	52%	28%	41%	21%	19%



Logix Merit Index	106
Growth Index	119
Reproduction Index	97

Birth Wt.	6.7kg
Pre-Wean	26.5kg (106)
Wean Wt.	47.4kg (108)
Post-Wean	72.8kg (100)
Mature Wt.	-
ADG Ind.	117
FCR Ind.	131
Scrotum	33

SELLER REMARKS: 2025 entings : multivax p, cydectin LA, glanvac, multimin

LOT 3 (M)



SENDER SUFFOLK

De Aar, Northern Cape
0832574737
johny.visser@outlook.com

350 220047

GERSURE RAM 350220047



Herd Book	SP
Birth date	2022-07-29
Age	3.2 years
Inbreeding	16.21%
Birth Stat.	1
Progeny	
In Herd	39
Total	62
Herds Used	3

350 190034 (2)
GERSURE RAM 350190034

Parentage Sire Dam
DNA
Genomic

350 180184 (3)
GERSURE EWE 35018184
AFL 34.3 | ILP 358 | EPI 107
Lambd 4 | Lams 5 | Weaned 5

350 170013
GERSURE RAM 350170013
GERHARD EWE 350150005
AFL 15.8 | ILP 357 | EPI 89
Lambd 3 | Lams 5 | Weaned 5

301 140218
TWEESEUNS OOI 301 140218
AFL 24.1 | ILP 360 | EPI 102
Lambd 7 | Lams 10 | Weaned 9
TOP CROP RAM 305 100005
TWEESEUNS OOI 301 100030
AFL 24.7 | ILP 362 | EPI 137
Lambd 7 | Lams 10 | Weaned 8

301 130206
TWEESEUNS RAM 301 130206
TOP CROP RAM 305 100005
TWEESEUNS OOI 301 100126
AFL 35.9 | ILP - | EPI -
Lambd 1 | Lams 2 | Weaned -

301 130126
TWEESEUNS OOI 301 130126
AFL 24.6 | ILP 376 | EPI 147
Lambd 7 | Lams 12 | Weaned 9
TWEESEUNS RAM 301 080012
TWEESEUNS OOI 301 090082
AFL 23.8 | ILP 372 | EPI 114
Lambd 4 | Lams 6 | Weaned 4

Growth					Reproduction			
PreWn. Dir	PreWn. Mat.	Wn. Dir.	Wean Mat.	Post-Wn.	NLW	TWW	AFL	ILP
112	101	111	103	112	70	83	108	88
78%	54%	77%	48%	64%	46%	59%	41%	36%



Logix Merit Index	90
Growth Index	112
Reproduction Index	81

Birth Wt.	3.8kg
Pre-Wean	36.7kg (136)
Wean Wt.	38.8kg (119)
Post-Wean	58.8kg (122)
Mature Wt.	-
ADG Ind.	-
FCR Ind.	-
Scrotum	-

SELLER REMARKS: Saadaandeel word teruggehou. Ram met besondere bouwrom. Self in stoet gebruik. Duurste ram op 2024 Nas. Veiling. Ent: Multivax P+, Bloutong A,B,C. Rev 1.



SUFFOLK NASIONALE VEILING

BE HUMAN, BLOEMFONTEIN 04 October 2025



LOT 4 (M)

350 230049

GERSURE RAM 350230049



. Kудdeboek	SP
Geb. dtm	2023-07-19
Oud.	2.2 jaar
Inteling	20.87%
Geb. Status	1
Nageslag	
In Kудde	1
Totaal	1
Kuddes Gebruik	1

GERT MALHERBE BRDY

Hertzogville, Free State
0828079216
gert@graslaagte.co.za

350 200025 (2)
GERSURE RAM 350200025

Ouerskap Vaar Moer

DNS

Genomies

350 200012 (2)

GERSURE EWE 350200012

OEL 15.1 | ILP 340 | OPI 114
Gelam 4 | Lammers 6 | Gespeen 6

350 170013

GERSURE RAM 350170013

284 160055

ALMAU OOI 284 160055

OEL 24 | ILP 363 | OPI 135
Gelam 6 | Lammers 8 | Gespeen 8

350 170013

GERSURE RAM 350170013

350 180024

GERSURE EWE 350180024

OEL 14.2 | ILP 316 | OPI 96
Gelam 3 | Lammers 6 | Gespeen 5

TWEESEUNS RAM 301 130206

GERHARD EWE 350150005

OEL 15.8 | ILP 357 | OPI 89
Gelam 3 | Lammers 5 | Gespeen 5

TWEESEUNS RAM 301 100123

ALMAU OOI 284 090033

OEL 26.1 | ILP 358 | OPI 181
Gelam 8 | Lammers 14 | Gespeen 13

TWEESEUNS RAM 301 130206

GERHARD EWE 350150005

OEL 15.8 | ILP 357 | OPI 89
Gelam 3 | Lammers 5 | Gespeen 5

CARMAR RAM 336170015

GERHARD EWE 350160043

OEL 12.5 | ILP 331 | OPI 95
Gelam 4 | Lammers 6 | Gespeen 5

Groei					Reproduksie			
VSpn. Dir	VSpn. Mat	Spn. Dir.	Spn. Mat.	Na-Spn.	GLS	TWW	OEL	ILP
97	119	105	118	128	71	85	122	114
65%	50%	64%	43%	52%	41%	51%	38%	30%

LOGIX ANALISE 2025-09-04
EBY Analise 2025-09-04

Logix Meriete Indeks	95
Groei Indeks	112
Reproduksie Indeks	104

Geb. Gew.	4.2kg
Voorspeen	22.8kg (107)
Speen Gew.	37.6kg (110)
Na-Speen	-
Volw. Gew.	-
GDT Ind.	-
VOV Ind.	-
Skrotum	-

VERKOPER OPMERKINGS:

LOT 5 (M)

343 240275

CHRISSCROSS RAM 343 240275



. Kудdeboek	SP
Geb. dtm	2024-09-03
Oud.	1.1 jaar
Inteling	24.55%
Geb. Status	2
Nageslag	
Geen	

CHRISSCROSS SUFFOLKS

Middelburg, Eastern Cape
0845134923
chrisna6666@gmail.com

343 210039 (1)

CHRISSCROSS RAM 343 210039

Ouerskap Vaar Moer

DNS

Genomies

343 180109 (1)

CHRISSCROSS EWE 343180109

OEL 24.2 | ILP 372 | OPI 107
Gelam 5 | Lammers 10 | Gespeen 7

301 150130

TWEESEUNS RAM 301 150130

343 160115

CHRISSCROSS OOI 343 160115

OEL 37 | ILP 325 | OPI 83
Gelam 3 | Lammers 3 | Gespeen 1

301 150130

TWEESEUNS RAM 301 150130

343 150032

CHRISSCROSS EWE 343150032

OEL - | ILP - | OPI 101
Gelam 4 | Lammers 3 | Gespeen 1

TWEESEUNS RAM 301 120001

TWEESEUNS OOI 301 100008

OEL 25 | ILP 364 | OPI 118
Gelam 5 | Lammers 8 | Gespeen 7

TWEESEUNS RAM 301 100114

CHRISSCROSS EWE 343150001

OEL - | ILP - | OPI -
Gelam 6 | Lammers 5 | Gespeen 1

TWEESEUNS RAM 301 120001

TWEESEUNS OOI 301 100008

OEL 25 | ILP 364 | OPI 118
Gelam 5 | Lammers 8 | Gespeen 7

TWEESEUNS RAM 301 100174

CHRISSCROSS EWE 343130025

OEL 13.4 | ILP 364 | OPI -
Gelam 6 | Lammers 8 | Gespeen -

Groei					Reproduksie			
VSpn. Dir	VSpn. Mat	Spn. Dir.	Spn. Mat.	Na-Spn.	GLS	TWW	OEL	ILP
109	83	114	85	107	97	101	90	107
64%	48%	63%	42%	54%	33%	48%	38%	31%

LOGIX ANALISE 2025-09-04
EBY Analise 2025-09-04

Logix Meriete Indeks	101
Groei Indeks	103
Reproduksie Indeks	94

Geb. Gew.	2kg
Voorspeen	22.7kg (111)
Speen Gew.	43.2kg (110)
Na-Speen	-
Volw. Gew.	-
GDT Ind.	-
VOV Ind.	-
Skrotum	-

VERKOPER OPMERKINGS: Ent: Bloutong
A,B,C / Multivax - P+

LOT 6 (M)

284 240005

ALMAU RAM 284240005



. Kудdeboek	SP
Geb. dtm	2024-07-15
Oud.	1.2 jaar
Inteling	9.95%
Geb. Status	2
Nageslag	
In Kудde	6
Totaal	9
Kuddes Gebruik	2

OTTERKUIL BOERDERY

Paarl, Western Cape
0832702134
albertkotze@otterkuil.co.za

284 220140 (2)

ALMAU RAM 284 220140

Ouerskap Vaar Moer

DNS

Genomies

284 210071 (2)

ALMAU OOI 284210071

OEL 23.5 | ILP 374 | OPI 104
Gelam 2 | Lammers 4 | Gespeen 4

284 170020

ALMAU RAM 284 170020

284 190046

ALMAU OOI 284190046

OEL 23.6 | ILP 370 | OPI 118
Gelam 4 | Lammers 8 | Gespeen 7

350 170087

GERHARD RAM 350170087

284 180008

ALMAU EWE 284180008

OEL 23.8 | ILP 371 | OPI 159
Gelam 5 | Lammers 13 | Gespeen 11

ALMAU RAM 284 150006

ALMAU OOI 284 130060

OEL 24.3 | ILP 355 | OPI 146
Gelam 7 | Lammers 14 | Gespeen 8

ALMAU RAM 284180007

ALMAU EWE 284170128

OEL 22.8 | ILP - | OPI 100
Gelam 1 | Lammers 2 | Gespeen 2

TWEESEUNS RAM 301 130206

TWEESEUNS OOI 301 140138

OEL 25.8 | ILP 355 | OPI 88
Gelam 4 | Lammers 5 | Gespeen 5

ALMAU RAM 284 160063

ALMAU OOI 284 150105

OEL 23.9 | ILP 355 | OPI 89
Gelam 3 | Lammers 4 | Gespeen 4

Groei					Reproduksie			
VSpn. Dir	VSpn. Mat	Spn. Dir.	Spn. Mat.	Na-Spn.	GLS	TWW	OEL	ILP
120	91	118	95	131	110	118	121	107
60%	38%	59%	32%	54%	29%	42%	25%	21%

LOGIX ANALISE 2025-09-04
EBY Analise 2025-09-04

Logix Meriete Indeks	121
Groei Indeks	115
Reproduksie Indeks	115

Geb. Gew.	4.5kg
Voorspeen	24.8kg (113)
Speen Gew.	46.7kg (112)
Na-Speen	75.4kg (107)
Volw. Gew.	-
GDT Ind.	-
VOV Ind.	-
Skrotum	-

VERKOPER OPMERKINGS: Ram met uitstekende fenotipiese- en genetiese waardes. Hy is 'n uitstekende groeier en gaan enige kудde voorentoe neem. Ent: Multivax P+, Onderstepoort Pasteurella, Bloutong(2024) Rev 1.



SUFFOLK NASIONALE VEILING

BE HUMAN, BLOEMFONTEIN 04 October 2025



LOT 7 (M)



BLANC DE NOIR



Bloemfontein, Free State
0823087668
albertkotze@otterkuil.co.za

337 240224

OTTERVLEI RAM 337240224



Herd Book	SP
Birth date	2024-07-21
Age	1.2 years
Inbreeding	6.07%
Birth Stat.	2
Progeny	None

284 190042 (3)
ALMAU RAM 284190042

Parentage Sire Dam

DNA

Genomic

287 190067 (2)
SUFFS EWE 287190067
AFL 24 | ILP 361 | EPI 113
Lambd 4 | Lams 7 | Weaned 5

350 170087
GERHARD RAM 350170087
TWEESEUNS RAM 301 130206
TWEESEUNS OOI 301 140138
AFL 25.8 | ILP 355 | EPI 88
Lambd 4 | Lams 5 | Weaned 5

284 150127
ALMAU OOI 284 150127
AFL 23.3 | ILP 365 | EPI 189
Lambd 8 | Lams 16 | Weaned 16
ALMAU RAM 284 130054
ALMAU OOI 284 120114
AFL 19.2 | ILP 363 | EPI 110
Lambd 6 | Lams 10 | Weaned 8

336 120008
CARMAR RAM 336 120008
CARMAR OOI 336 090071
AFL 35.5 | ILP 426 | EPI -
Lambd 2 | Lams 3 | Weaned -

287 150039
SUFFS OOI 287 150039
AFL 36 | ILP 427 | EPI 108
Lambd 3 | Lams 6 | Weaned 2
CARMAR RAM 336140001
SONSKIC OOI 333 080008
AFL 24.9 | ILP 524 | EPI 335
Lambd 6 | Lams 10 | Weaned 4

Growth					Reproduction			
PreWn. Dir	PreWn. Mat.	Wn. Dir.	Wean Mat.	Post-Wn.	NLW	TWW	AFL	ILP
112	96	115	98	116	88	99	107	106
61%	45%	61%	39%	55%	34%	46%	31%	27%



EBV Analysis 2025-09-04

Logix Merit Index	105
Growth Index	112
Reproduction Index	100

Birth Wt.	5.5kg
Pre-Wean	22.4kg (106)
Wean Wt.	49.4kg (117)
Post-Wean	81.3kg (109)
Mature Wt.	-
ADG Ind.	-
FCR Ind.	-
Scrotum	-

SELLER REMARKS: Uitstekende bouwvorm ram met 'n lekker wakker houding, en syfers wat sy bouwvorm komplementeer. Ent: Multivax P+, Ondersteport Pasteurella, Bloutong(2024) Rev 1.s

LOT 8 (M)



F. STRAUSS



Schweizer-Reneke, North West
0829440360
derikstrauss@gmail.com

346 230061

TOPCHOP RAM 346 230061



Herd Book	SP
Birth date	2023-07-27
Age	2.2 years
Inbreeding	6.64%
Birth Stat.	2
Progeny	None

350 210056 (2)
GERSURE RAM 350210056

Parentage Sire Dam

DNA

Genomic

346 190056 (2)
TOPCHOP OOI 346 190056
AFL 24.2 | ILP 363 | EPI 96
Lambd 3 | Lams 4 | Weaned 4

350 190034
GERSURE RAM 350190034
TWEESEUNS OOI 301 140218
AFL 24.1 | ILP 360 | EPI 102
Lambd 7 | Lams 10 | Weaned 9

350 180103
GERSURE EWE 35018103
AFL 13.7 | ILP 348 | EPI 115
Lambd 5 | Lams 8 | Weaned 7
GERHARD OOI 350 150277
AFL - | ILP 503 | EPI 111
Lambd 3 | Lams 5 | Weaned 5

284 160082
ALMAU RAM 284 160082
TWEESEUNS RAM 301 100123
ALMAU OOI 284 130058
AFL 22.8 | ILP 362 | EPI 142
Lambd 5 | Lams 10 | Weaned 9

346 150053
DERANDI EWE 346150053
AFL 24 | ILP 382 | EPI 106
Lambd 3 | Lams 4 | Weaned 4
ABRATO RAM 257090058
DERANDI OOI 346 090051
AFL - | ILP 375 | EPI 121
Lambd 4 | Lams 10 | Weaned 7

Growth					Reproduction			
PreWn. Dir	PreWn. Mat.	Wn. Dir.	Wean Mat.	Post-Wn.	NLW	TWW	AFL	ILP
105	84	93	84	95	87	81	107	120
62%	40%	61%	34%	36%	32%	44%	27%	25%



EBV Analysis 2025-09-04

Logix Merit Index	90
Growth Index	89
Reproduction Index	88

Birth Wt.	4kg
Pre-Wean	23.6kg (108)
Wean Wt.	37.6kg (108)
Post-Wean	-
Mature Wt.	-
ADG Ind.	97
FCR Ind.	95
Scrotum	29

SELLER REMARKS: Baie korrekte ram - goeie kleur, regte wol afsnyding, beweeg gemaklik en het baie kapasiteit regdeur. Ent: Rev 1, Glanvac 16/6, Clostrivax O 14/8

LOT 9 (M)



TWEESEUNS

Barkley-East, Eastern Cape
0723132232
tjaart@barkly.co.za



301 240297

TWEESEUNS RAM 301 240297

Herd Book	SP
Birth date	2024-07-28
Age	1.2 years
Inbreeding	7.88%
Birth Stat.	2
Progeny	None

301 200108 (1)
TWEESEUNS RAM 301 200108

Parentage Sire Dam

DNA

Genomic

301 170263 (1)
TWEESEUNS EWE 301170263
AFL 36.1 | ILP 715 | EPI 93
Lambd 3 | Lams 5 | Weaned 5

301 130033
TWEESEUNS RAM 301 130033
TWEESEUNS OOI 301 110007
AFL 24.6 | ILP 458 | EPI 117
Lambd 5 | Lams 7 | Weaned 6

301 170081
TWEESEUNS EWE 301170081
AFL 25.3 | ILP 729 | EPI 87
Lambd 3 | Lams 3 | Weaned 2
TWEESEUNS RAM 301 150052
TWEESEUNS OOI 301 100120
AFL 35.1 | ILP 369 | EPI 122
Lambd 6 | Lams 9 | Weaned 7

301 100112
TWEESEUNS RAM 301 100112
TWEESEUNS OOI 301 070149
AFL 35 | ILP 340 | EPI 89
Lambd 2 | Lams 2 | Weaned 2

301 100030
TWEESEUNS OOI 301 100030
AFL 24.7 | ILP 362 | EPI 137
Lambd 7 | Lams 10 | Weaned 8
TWEESEUNS RAM 301 080040
TWEESEUNS OOI 301 050072
AFL 11.3 | ILP 723 | EPI 95
Lambd 3 | Lams 4 | Weaned 1

Growth					Reproduction			
PreWn. Dir	PreWn. Mat.	Wn. Dir.	Wean Mat.	Post-Wn.	NLW	TWW	AFL	ILP
107	112	91	110	100	109	105	92	97
66%	50%	65%	45%	53%	43%	52%	40%	34%



EBV Analysis 2025-09-04

Logix Merit Index	107
Growth Index	103
Reproduction Index	107

Birth Wt.	4kg
Pre-Wean	25.6kg (116)
Wean Wt.	30.7kg (93)
Post-Wean	102kg (104)
Mature Wt.	-
ADG Ind.	-
FCR Ind.	-
Scrotum	-

SELLER REMARKS: 15 maande oud. Ent: Multivax P+, Cydecton, Ref 1.



SUFFOLK NASIONALE VEILING

BE HUMAN, BLOEMFONTEIN 04 October 2025



LOT 10 (M)



VREDESIG FORBES

Darling, Western Cape
0825442336
wjjforbes@gmail.com

375 230073

VREDESIG RAM 375230073



Kuddeboek	SP
Geb. dtm	2023-08-20
Oud.	2.1 jaar
Inteling	8.61%
Geb. Status	1
Nageslag	
Geen	

344 200005 (2)
LONE TREE BLOKMAN

Ouerskap Vaar Moer	
DNS	
Genomies	✓

301 160041 (2)
TWEESEUNS EWE 301160041

OEL 23.7 | ILP 313 | OPI 161
Gelam 8 | Lammers 12 | Gespeen 12

344 170019
LONE TREE RAM 344170019

TWEESEUNS RAM 301 130033
LONE TREE EWE 344150029
OEL 26.1 | ILP 338 | OPI 98
Gelam 2 | Lammers 3 | Gespeen 2

344 160014
LONE TREE EWE 344160014

OEL 12.7 | ILP 355 | OPI 100
Gelam 8 | Lammers 17 | Gespeen 17

TWEESEUNS RAM 301 130033
LONE TREE EWE 344140060
OEL 21.5 | ILP - | OPI 91
Gelam 1 | Lammers 2 | Gespeen 2

301 110002
TWEESEUNS RAM 301 110002

TWEESEUNS RAM 301 070028
TWEESEUNS OOI 301 080158
OEL 24.3 | ILP 353 | OPI 108
Gelam 3 | Lammers 5 | Gespeen 5

301 100048
TWEESEUNS OOI 301 100048

OEL 24.7 | ILP 362 | OPI 161
Gelam 7 | Lammers 11 | Gespeen 10

TWEESEUNS RAM 301 080012
TWEESEUNS OOI 301 050057
OEL 23.8 | ILP 359 | OPI 119
Gelam 6 | Lammers 9 | Gespeen 3

Groei					Reproduksie			
VSpn. Dir	VSpn. Mat	Spn. Dir	Spn. Mat	Na-Spn.	GLS	TWW	OEL	ILP
129	105	129	109	114	107	125	108	86
59%	46%	66%	42%	55%	40%	51%	34%	28%



Logix Meriete Indeks	130
Groei Indeks	132
Reproduksie Indeks	115

Geb. Gew.	6.2kg
Voorspeen	-
Speen Gew.	41.8kg (133)
Na-Speen	68.1kg (101)
Volw. Gew.	-
GDT Ind.	-
VOV Ind.	-
Skrotum	-

VERKOPER OPMERKINGS: Blokman seun met besondere bouwvorm en syfers! Was reserve senior kamioen op Nasionale Skou 2025. Ram is self in stoet gebruik. Entings: Rev 1, Blu Vax, Glenvac 3 en Multivax P- Plus.

LOT 11 (M)



J.I. POTGIETER

Bothaville, Free State
0834517187
laneros1189@gmail.com

360 240131

JIP RAM 360240131



Kuddeboek	SP
Geb. dtm	2024-07-05
Oud.	1.2 jaar
Inteling	6.92%
Geb. Status	1
Nageslag	
Geen	

360 220155 (1)
JIP RAM 360220155

Ouerskap Vaar Moer	
DNS	
Genomies	

336 210056 (2)
CARMAR EWE 336210056

OEL 35.5 | ILP 355 | OPI 91
Gelam 3 | Lammers 4 | Gespeen 1

301 200240
TWEESEUNS RAM 301 200240

TWEESEUNS RAM 301190213
TWEESEUNS OOI 301 150016
OEL 24.1 | ILP 420 | OPI 113
Gelam 7 | Lammers 9 | Gespeen 9

360 190090
JIP EWE 360190090

OEL 23.2 | ILP 363 | OPI 89
Gelam 4 | Lammers 4 | Gespeen 3

TWEESEUNS RAM 301170283
JIP OOI 360140302
OEL - | ILP 363 | OPI 99
Gelam 2 | Lammers 3 | Gespeen 3

336 170046
CARMAR RAM 336170046

ALMAU OOI 284 110020
OEL 24.7 | ILP 361 | OPI 183
Gelam 10 | Lammers 17 | Gespeen 9

CARMAR RAM 336150044
CARMAR RAM 336150041
CARMAR OOI 336 130018
OEL 22.6 | ILP 371 | OPI 124
Gelam 7 | Lammers 11 | Gespeen 9

Groei					Reproduksie			
VSpn. Dir	VSpn. Mat	Spn. Dir	Spn. Mat	Na-Spn.	GLS	TWW	OEL	ILP
119	87	115	90	109	100	106	67	102
60%	33%	59%	27%	50%	24%	39%	21%	20%

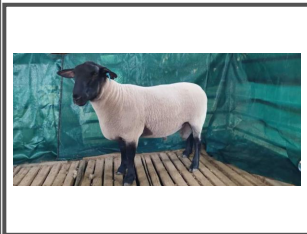


Logix Meriete Indeks	105
Groei Indeks	109
Reproduksie Indeks	95

Geb. Gew.	6.4kg
Voorspeen	20.3kg (112)
Speen Gew.	23.9kg (87)
Na-Speen	76.5kg (105)
Volw. Gew.	-
GDT Ind.	94
VOV Ind.	95
Skrotum	31

VERKOPER OPMERKINGS: 2025 entings : multivax p, cydectin LA, glanvac, multimin

LOT 12 (M)



SENDER SUFFOLK

De Aar, Northern Cape
0832574737
johny.visser@outlook.com

362 240019

SENDER RAM 362240019



Kuddeboek	SP
Geb. dtm	2024-08-17
Oud.	1.1 jaar
Inteling	10.18%
Geb. Status	2
Nageslag	
Geen	

362 210031 (1)
SENDER RAM 362210031

Ouerskap Vaar Moer	
DNS	
Genomies	

362 220062 (2)
SENDER OOI 362220062

OEL 19.7 | ILP - | OPI 105
Gelam 1 | Lammers 2 | Gespeen 2

362 200029
SENDER RAM 362200029

GERSURE RAM 350170013
GERHARD EWE 350170063
OEL 12.8 | ILP 324 | OPI 84
Gelam 3 | Lammers 5 | Gespeen 1

336 190062
CARMAR RAM 336190062

CHRISSCROSS OOI 343 160062
OEL - | ILP - | OPI -
Gelam 8 | Lammers 11 | Gespeen -

TWEESEUNS RAM 301 100114
CHRISSCROSS OOI 343 120013
OEL 12.7 | ILP 363 | OPI -
Gelam 5 | Lammers 7 | Gespeen -

CARMAR RAM 336160040
CARMAR EWE 336170031
OEL 24.6 | ILP 371 | OPI 90
Gelam 3 | Lammers 3 | Gespeen 3

TWEESEUNS RAM 301 130206
TWEESEUNS EWE 301160152
OEL 22.5 | ILP 384 | OPI 92
Gelam 2 | Lammers 4 | Gespeen 4

Groei					Reproduksie			
VSpn. Dir	VSpn. Mat	Spn. Dir	Spn. Mat	Na-Spn.	GLS	TWW	OEL	ILP
118	87	109	88	107	83	88	104	96
42%	29%	41%	26%	26%	22%	31%	25%	21%



Logix Meriete Indeks	95
Groei Indeks	105
Reproduksie Indeks	82

Geb. Gew.	4kg
Voorspeen	14.9kg (96)
Speen Gew.	29.2kg (115)
Na-Speen	33kg (96)
Volw. Gew.	47.8kg
GDT Ind.	-
VOV Ind.	-
Skrotum	-

VERKOPER OPMERKINGS: Ent: Multivax P+, Bloutong A,B,C. Rev 1.



SUFFOLK NASIONALE VEILING

BE HUMAN, BLOEMFONTEIN 04 October 2025



LOT 13 (M)



SENDER SUFFOLK

De Aar, Northern Cape
0832574737
johny.visser@outlook.com

362 240042

SENDER RAM 362240042



Herd Book	SP
Birth date	2024-09-08
Age	1.1 years
Inbreeding	9.77%
Birth Stat.	3
Progeny	None

362 210031 (1)
SENDER RAM 362210031

Parentage Sire Dam
DNA
Genomic

362 190009 (1)
SENDER EWE 362190009
AFL 27.3 | ILP 379 | EPI 119
Lambd 4 | Lams 8 | Weaned 6

362 200029
SENDER RAM 362200029
GERSURE RAM 350170013
GERHARD EWE 350170063
AFL 12.8 | ILP 324 | EPI 84
Lambd 3 | Lams 5 | Weaned 1

343 160062
CHRISSCROSS OOI 343 160062
AFL - | ILP - | EPI -
Lambd 8 | Lams 11 | Weaned -

362 180042
SENDER RAM 362180042
TWEESEUNS RAM 301 130033
ALMAU OOI 284 140024
AFL - | ILP - | EPI 83
Lambd 4 | Lams 3 | Weaned 3

362 180038
SENDER EWE 362180038
AFL 7.1 | ILP 388 | EPI 97
Lambd 6 | Lams 9 | Weaned 3

Growth					Reproduction			
PreWn. Dir	PreWn. Mat.	Wn. Dir.	Wean Mat.	Post-Wn.	NLW	TWW	AFL	ILP
104	93	97	91	98	87	85	108	102
43%	34%	42%	30%	25%	24%	33%	27%	23%



EBV Analysis 2025-09-04

Logix Merit Index	91
Growth Index	95
Reproduction Index	86

SELLER REMARKS: Ent: Multivax P+, Bloutong A,B,C. Rev 1.

Birth Wt.	5.1kg
Pre-Wean	15.6kg (100)
Wean Wt.	25.3kg (100)
Post-Wean	34.4kg (100)
Mature Wt.	47.4kg
ADG Ind.	-
FCR Ind.	-
Scrotum	-

LOT 14 (M)



SENDER SUFFOLK

De Aar, Northern Cape
0832574737
johny.visser@outlook.com

362 240056

SENDER RAM 362240056



Herd Book	SP
Birth date	2024-09-24
Age	1 years
Inbreeding	35.06%
Birth Stat.	1
Progeny	None

362 210031 (1)
SENDER RAM 362210031

Parentage Sire Dam
DNA
Genomic

362 230053 (1)
SENDER EWE 362230053
AFL 12 | ILP - | EPI 94
Lambd 1 | Lams 1 | Weaned 1

362 200029
SENDER RAM 362200029
GERSURE RAM 350170013
GERHARD EWE 350170063
AFL 12.8 | ILP 324 | EPI 84
Lambd 3 | Lams 5 | Weaned 1

343 160062
CHRISSCROSS OOI 343 160062
AFL - | ILP - | EPI -
Lambd 8 | Lams 11 | Weaned -

362 210031
SENDER RAM 362210031
SENDER RAM 362200029
CHRISSCROSS OOI 343 160062
AFL - | ILP - | EPI -
Lambd 8 | Lams 11 | Weaned -

350 180007
GERSURE EWE 3501807
AFL 16 | ILP 282 | EPI 67
Lambd 6 | Lams 7 | Weaned 1

Growth					Reproduction			
PreWn. Dir	PreWn. Mat.	Wn. Dir.	Wean Mat.	Post-Wn.	NLW	TWW	AFL	ILP
118	86	109	87	104	83	88	111	93
45%	28%	44%	25%	25%	22%	32%	25%	21%



EBV Analysis 2025-09-04

Logix Merit Index	95
Growth Index	105
Reproduction Index	81

SELLER REMARKS: Ent: Multivax P+, Bloutong A,B,C. Rev 1.

Birth Wt.	5.2kg
Pre-Wean	19.8kg (127)
Wean Wt.	27.4kg (108)
Post-Wean	36.1kg (105)
Mature Wt.	39kg
ADG Ind.	-
FCR Ind.	-
Scrotum	-

LOT 15 (M)



SENDER SUFFOLK

De Aar, Northern Cape
0832574737
johny.visser@outlook.com

362 240047

SENDER RAM 362240047



Herd Book	SP
Birth date	2024-09-08
Age	1.1 years
Inbreeding	5.92%
Birth Stat.	2
Progeny	None

362 210031 (1)
SENDER RAM 362210031

Parentage Sire Dam
DNA
Genomic

362 220059 (2)
SENDER OOI 362220059
AFL 20.4 | ILP 361 | EPI 101
Lambd 2 | Lams 3 | Weaned 2

362 200029
SENDER RAM 362200029
GERSURE RAM 350170013
GERHARD EWE 350170063
AFL 12.8 | ILP 324 | EPI 84
Lambd 3 | Lams 5 | Weaned 1

343 160062
CHRISSCROSS OOI 343 160062
AFL - | ILP - | EPI -
Lambd 8 | Lams 11 | Weaned -

336 190062
CARMAR RAM 336190062
CARMAR RAM 336160040
CARMAR EWE 336170031
AFL 24.6 | ILP 371 | EPI 90
Lambd 3 | Lams 3 | Weaned 3

362 180010
SENDER OOI 362180010
AFL 15.2 | ILP 288 | EPI -
Lambd 5 | Lams 9 | Weaned -

Growth					Reproduction			
PreWn. Dir	PreWn. Mat.	Wn. Dir.	Wean Mat.	Post-Wn.	NLW	TWW	AFL	ILP
115	86	111	87	109	88	93	98	92
39%	26%	39%	23%	23%	19%	28%	24%	21%



EBV Analysis 2025-09-04

Logix Merit Index	95
Growth Index	105
Reproduction Index	83

SELLER REMARKS: Ent: Multivax P+, Bloutong A,B,C. Rev 1.

Birth Wt.	6.1kg
Pre-Wean	19.3kg (124)
Wean Wt.	26.1kg (103)
Post-Wean	38.1kg (111)
Mature Wt.	42.8kg
ADG Ind.	-
FCR Ind.	-
Scrotum	-



SUFFOLK NASIONALE VEILING

BE HUMAN, BLOEMFONTEIN 04 October 2025



LOT 16 (M)



GERT MALHERBE BRDY

Hertzogville, Free State
0828079216
gert@graslaagte.co.za

350 240072

GERSURE RAM 350240072



Kuddeboek	SP
Geb. dtm	2024-07-23
Oud.	1.2 jaar
Inteling	11.55%
Geb. Status	1
Nageslag	
Geen	

369 220037 (1)
GSS RAM 369220037

Ouerskap Vaar Moer

DNS

Genomies

350 190178 (1)

GERSURE EWE 350190178
OEL 21.2 | ILP 371 | OPI 121
Gelum 4 | Lammers 5 | Gespeen 5

350 200025
GERSURE RAM 350200025

GERSURE RAM 350170013
ALMAU OOI 284 160055
OEL 24 | ILP 363 | OPI 135
Gelum 6 | Lammers 8 | Gespeen 8

350 200057
GERSURE EWE 350200057
OEL 25.3 | ILP 336 | OPI 96
Gelum 2 | Lammers 3 | Gespeen 3

GERHARD RAM 350170102
GERSURE EWE 35018019
OEL 23.1 | ILP 373 | OPI 90
Gelum 3 | Lammers 4 | Gespeen 3

284 170117
ALMAU RAM 284 170117

ALMAU RAM 284 140036
ALMAU OOI 284 110090
OEL 21.5 | ILP 487 | OPI 90
Gelum 4 | Lammers 6 | Gespeen 5

350 180061
GERSURE EWE 35018061
OEL 13.8 | ILP 447 | OPI 100
Gelum 5 | Lammers 5 | Gespeen 5

TWEESEUNS RAM 301 130206
TWEESEUNS EWE 301140172
OEL 25.2 | ILP 358 | OPI 137
Gelum 7 | Lammers 15 | Gespeen 12

Groei					Reproduksie			
VSpn. Dir	VSpn. Mat	Spn. Dir.	Spn. Mat.	Na-Spn.	GLS	TWW	OEL	ILP
110	112	94	112	123	75	79	122	111
64%	40%	63%	33%	57%	31%	44%	27%	23%



EBV Analyse 2025-09-04

Logix Meriete Indeks **94**

Groei Indeks **107**

Reproduksie Indeks **97**

Geb. Gew.	5.3kg
Voorspeen	24.4kg (128)
Speen Gew.	37.6kg (115)
Na-Speen	64.6kg (113)
Volw. Gew.	-
GDT Ind.	-
VOV Ind.	-
Skrotum	-

VERKOPER OPMERKINGS:

LOT 17 (M)



CHRISRCROSS SUFFOLKS

Middelburg, Eastern Cape
0845134923
chrisna6666@gmail.com

343 240025

CHRISRCROSS RAM 343 240025



Kuddeboek	SP
Geb. dtm	2024-07-22
Oud.	1.2 jaar
Inteling	%
Geb. Status	2
Nageslag	
Geen	

343 210023 (1)
CHRISRCROSS RAM 343210023

Ouerskap Vaar Moer

DNS

Genomies

343 220081 (2)

CHRISRCROSS OOI 343 220081
OEL 13.7 | ILP 315 | OPI 114
Gelum 2 | Lammers 3 | Gespeen 3

301 150130
TWEESEUNS RAM 301 150130

TWEESEUNS RAM 301 120001
TWEESEUNS OOI 301 100008
OEL 25 | ILP 364 | OPI 118
Gelum 5 | Lammers 8 | Gespeen 7

343 150124
CHRISRCROSS EWE 343150124
OEL - | ILP - | OPI 95
Gelum 7 | Lammers 8 | Gespeen 4

TWEESEUNS RAM 301 100174
CHRISRCROSS EWE 343140044
OEL 13.2 | ILP 622 | OPI 88
Gelum 5 | Lammers 6 | Gespeen 1

301 190044
TWEESEUNS RAM 301190044

TWEESEUNS RAM 301 130033
TWEESEUNS OOI 301 120060
OEL 24.1 | ILP 362 | OPI 131
Gelum 6 | Lammers 9 | Gespeen 9

343 180017
CHRISRCROSS EWE 343180017
OEL 24.3 | ILP 289 | OPI 115
Gelum 6 | Lammers 9 | Gespeen 9

TWEESEUNS RAM 301 150130
CHRISRCROSS EWE 343150027
OEL - | ILP - | OPI -
Gelum 5 | Lammers 5 | Gespeen -

Groei					Reproduksie			
VSpn. Dir	VSpn. Mat	Spn. Dir.	Spn. Mat.	Na-Spn.	GLS	TWW	OEL	ILP
121	98	117	102	107	100	111	101	107
64%	44%	63%	38%	59%	32%	46%	34%	29%



EBV Analyse 2025-09-04

Logix Meriete Indeks **118**

Groei Indeks **118**

Reproduksie Indeks **110**

Geb. Gew.	2kg
Voorspeen	24.1kg (114)
Speen Gew.	43.8kg (119)
Na-Speen	50.8kg (105)
Volw. Gew.	-
GDT Ind.	-
VOV Ind.	-
Skrotum	-

VERKOPER OPMERKINGS: Ent: Bloutong A,B,C / Multivax - P+

LOT 18 (M)



CHRISRCROSS SUFFOLKS

Middelburg, Eastern Cape
0845134923
chrisna6666@gmail.com

343 240035

CHRISRCROSS RAM 343 240035



Kuddeboek	SP
Geb. dtm	2024-07-22
Oud.	1.2 jaar
Inteling	27.2%
Geb. Status	2
Nageslag	
Geen	

343 210023 (1)
CHRISRCROSS RAM 343210023

Ouerskap Vaar Moer

DNS

Genomies

343 200045 (1)

CHRISRCROSS OOI 343 200045
OEL 12.6 | ILP 538 | OPI 94
Gelum 3 | Lammers 4 | Gespeen 4

301 150130
TWEESEUNS RAM 301 150130

TWEESEUNS RAM 301 120001
TWEESEUNS OOI 301 100008
OEL 25 | ILP 364 | OPI 118
Gelum 5 | Lammers 8 | Gespeen 7

343 150124
CHRISRCROSS EWE 343150124
OEL - | ILP - | OPI 95
Gelum 7 | Lammers 8 | Gespeen 4

TWEESEUNS RAM 301 100174
CHRISRCROSS EWE 343140044
OEL 13.2 | ILP 622 | OPI 88
Gelum 5 | Lammers 6 | Gespeen 1

301 150130
TWEESEUNS RAM 301 150130

TWEESEUNS RAM 301 120001
TWEESEUNS OOI 301 100008
OEL 25 | ILP 364 | OPI 118
Gelum 5 | Lammers 8 | Gespeen 7

343 150096
CHRISRCROSS EWE 343150096
OEL - | ILP - | OPI -
Gelum 6 | Lammers 7 | Gespeen 4

TWEESEUNS RAM 301 100174
CHRISRCROSS EWE 343140048
OEL 12.6 | ILP - | OPI -
Gelum 1 | Lammers 1 | Gespeen -

Groei					Reproduksie			
VSpn. Dir	VSpn. Mat	Spn. Dir.	Spn. Mat.	Na-Spn.	GLS	TWW	OEL	ILP
112	100	113	103	120	97	106	94	98
63%	45%	62%	39%	59%	30%	46%	33%	31%



EBV Analyse 2025-09-04

Logix Meriete Indeks **107**

Groei Indeks **113**

Reproduksie Indeks **103**

Geb. Gew.	3kg
Voorspeen	21.6kg (102)
Speen Gew.	39.5kg (107)
Na-Speen	49.5kg (102)
Volw. Gew.	-
GDT Ind.	-
VOV Ind.	-
Skrotum	-

VERKOPER OPMERKINGS: Ent: Bloutong A,B,C / Multivax - P+



SUFFOLK NASIONALE VEILING

BE HUMAN, BLOEMFONTEIN 04 October 2025



LOT 19 (M)



CHRISRCROSS SUFFOLKS

Middelburg, Eastern Cape
0845134923
chrisna6666@gmail.com

343 240144

CHRISRCROSS RAM 343 240144



Herd Book	SP
Birth date	2024-08-01
Age	1.2 years
Inbreeding	27.2%
Birth Stat.	1
Progeny	None

343 210023 (1)
CHRISRCROSS RAM 343210023

Parentage Sire Dam

DNA

Genomic

343 210066 (2)
CHRISRCROSS OOI 343 210066

AFL 14 | ILP 343 | EPI 106
Lambd 3 | Lambs 4 | Weaned 4

301 150130
TWESEUNS RAM 301 150130
TWESEUNS RAM 301 120001
TWESEUNS OOI 301 100008
AFL 25 | ILP 364 | EPI 118
Lambd 5 | Lambs 8 | Weaned 7

343 150124
CHRISRCROSS EWE 343150124
AFL - | ILP - | EPI 95
Lambd 7 | Lambs 8 | Weaned 4
TWESEUNS RAM 301 100174
CHRISRCROSS EWE 343140044
AFL 13.2 | ILP 622 | EPI 88
Lambd 5 | Lambs 6 | Weaned 1

301 150130
TWESEUNS RAM 301 150130
TWESEUNS OOI 301 100008
AFL 25 | ILP 364 | EPI 118
Lambd 5 | Lambs 8 | Weaned 7

343 150096
CHRISRCROSS EWE 343150096
AFL - | ILP - | EPI -
Lambd 6 | Lambs 7 | Weaned 4
TWESEUNS RAM 301 100174
CHRISRCROSS EWE 343140048
AFL 12.6 | ILP - | EPI -
Lambd 1 | Lambs 1 | Weaned -

Growth					Reproduction			
PreWn. Dir	PreWn. Mat.	Wn. Dir.	Wean Mat.	Post-Wn.	NLW	TWW	AFL	ILP
112	101	112	104	120	96	105	91	102
64%	45%	63%	39%	60%	32%	47%	34%	31%



EBV Analysis 2025-09-04

Logix Merit Index	106
Growth Index	113
Reproduction Index	103

Birth Wt.	3kg
Pre-Wean	26kg (123)
Wean Wt.	45.1kg (122)
Post-Wean	50.8kg (105)
Mature Wt.	-
ADG Ind.	-
FCR Ind.	-
Scrotum	-

SELLER REMARKS: Ent: Bloutong A,B,C /
Multivax - P+

LOT 20 (M)



CHRISRCROSS SUFFOLKS

Middelburg, Eastern Cape
0845134923
chrisna6666@gmail.com

343 240208

CHRISRCROSS RAM 343 240208



Herd Book	SP
Birth date	2024-08-10
Age	1.1 years
Inbreeding	13.28%
Birth Stat.	1
Progeny	None

343 210023 (1)
CHRISRCROSS RAM 343210023

Parentage Sire Dam

DNA

Genomic

343 210169 (1)
CHRISRCROSS OOI 343 210169

AFL 24 | ILP 368 | EPI 90
Lambd 2 | Lambs 2 | Weaned 2

301 150130
TWESEUNS RAM 301 150130
TWESEUNS OOI 301 100008
AFL 25 | ILP 364 | EPI 118
Lambd 5 | Lambs 8 | Weaned 7

343 150124
CHRISRCROSS EWE 343150124
AFL - | ILP - | EPI 95
Lambd 7 | Lambs 8 | Weaned 4
TWESEUNS RAM 301 100174
CHRISRCROSS EWE 343140044
AFL 13.2 | ILP 622 | EPI 88
Lambd 5 | Lambs 6 | Weaned 1

337 180050
OTTERVLEI RAM 337180050
TWESEUNS EWE 301 120183
AFL 35 | ILP 372 | EPI 109
Lambd 6 | Lambs 9 | Weaned 5

343 180054
CHRISRCROSS EWE 343180054
AFL 24.2 | ILP 365 | EPI 102
Lambd 5 | Lambs 7 | Weaned 7
TWESEUNS RAM 301 100174
CHRISRCROSS EWE 343130044
AFL 23.8 | ILP 364 | EPI -
Lambd 4 | Lambs 5 | Weaned -

Growth					Reproduction			
PreWn. Dir	PreWn. Mat.	Wn. Dir.	Wean Mat.	Post-Wn.	NLW	TWW	AFL	ILP
106	90	110	91	109	96	100	94	100
64%	43%	62%	37%	59%	30%	45%	32%	28%



EBV Analysis 2025-09-04

Logix Merit Index	99
Growth Index	103
Reproduction Index	94

Birth Wt.	3kg
Pre-Wean	19.7kg (100)
Wean Wt.	30.6kg (102)
Post-Wean	42.2kg (101)
Mature Wt.	-
ADG Ind.	-
FCR Ind.	-
Scrotum	-

SELLER REMARKS: Ent: Bloutong A,B,C /
Multivax - P+

LOT 21 (M)



CHRISRCROSS SUFFOLKS

Middelburg, Eastern Cape
0845134923
chrisna6666@gmail.com

343 240050

CHRISRCROSS RAM 343 240050



Herd Book	SP
Birth date	2024-07-22
Age	1.2 years
Inbreeding	20.72%
Birth Stat.	1
Progeny	None

343 210023 (1)
CHRISRCROSS RAM 343210023

Parentage Sire Dam

DNA

Genomic

343 220246 (1)
CHRISRCROSS OOI 343 220246

AFL 22.3 | ILP - | EPI 98
Lambd 1 | Lambs 1 | Weaned 1

301 150130
TWESEUNS RAM 301 150130
TWESEUNS OOI 301 100008
AFL 25 | ILP 364 | EPI 118
Lambd 5 | Lambs 8 | Weaned 7

343 150124
CHRISRCROSS EWE 343150124
AFL - | ILP - | EPI 95
Lambd 7 | Lambs 8 | Weaned 4
TWESEUNS RAM 301 100174
CHRISRCROSS EWE 343140044
AFL 13.2 | ILP 622 | EPI 88
Lambd 5 | Lambs 6 | Weaned 1

343 190008
CHRISRCROSS RAM 343190008
TWESEUNS RAM 301 150130
CHRISRCROSS OOI 343 160007
AFL - | ILP - | EPI -
Lambd 3 | Lambs 3 | Weaned 1

343 160101
CHRISRCROSS OOI 343 160101
AFL - | ILP - | EPI -
Lambd 5 | Lambs 5 | Weaned 3
TWESEUNS RAM 301 100114
CHRISRCROSS EWE 343150026
AFL - | ILP - | EPI -
Lambd 5 | Lambs 4 | Weaned -

Growth					Reproduction			
PreWn. Dir	PreWn. Mat.	Wn. Dir.	Wean Mat.	Post-Wn.	NLW	TWW	AFL	ILP
105	94	106	95	107	95	98	92	104
63%	41%	62%	34%	58%	28%	43%	31%	26%



EBV Analysis 2025-09-04

Logix Merit Index	99
Growth Index	103
Reproduction Index	96

Birth Wt.	3kg
Pre-Wean	22.5kg (106)
Wean Wt.	40kg (108)
Post-Wean	47kg (97)
Mature Wt.	-
ADG Ind.	-
FCR Ind.	-
Scrotum	-

SELLER REMARKS: Ent: Bloutong A,B,C /
Multivax - P+



SUFFOLK NASIONALE VEILING

BE HUMAN, BLOEMFONTEIN 04 October 2025



LOT 22 (M)



OTTERKUIL BOERDERY



Paarl, Western Cape
0832702134
albertkotze@otterkuil.co.za

284 240028

ALMAU RAM 284240028



Kuddeboek	SP
Geb. dtm	2024-07-17
Oud.	1.2 jaar
Inteling	19.76%
Geb. Status	1
Nageslag	Geen

284 210073 (2)
ALMAU RAM 284210073

Ouerskap Vaar Moer

DNS
Genomies

284 220116 (3)
ALMAU OOI 284 220116
OEL 24.6 | ILP 409 | OPI 93
Gelum 2 | Lammers 2 | Gespeen 1

350 170087
GERHARD RAM 350170087
TWEESEUNS RAM 301 130206
TWEESEUNS OOI 301 140138
OEL 25.8 | ILP 355 | OPI 88
Gelum 4 | Lammers 5 | Gespeen 5

284 150103
ALMAU OOI 284 150103
OEL 24 | ILP 362 | OPI 252
Gelum 9 | Lammers 24 | Gespeen 20
CARMAR RAM 336 120004
TWEESEUNS OOI 301 120267
OEL 22.4 | ILP 370 | OPI 120
Gelum 5 | Lammers 7 | Gespeen 7

284 190042
ALMAU RAM 284190042
GERHARD RAM 350170087
ALMAU OOI 284 150127
OEL 23.3 | ILP 365 | OPI 189
Gelum 8 | Lammers 16 | Gespeen 16

284 200056
ALMAU EWE 284200056
OEL 23.5 | ILP 374 | OPI 105
Gelum 2 | Lammers 6 | Gespeen 5
GERHARD RAM 350170087
ALMAU EWE 284180013
OEL 23.8 | ILP 379 | OPI 112
Gelum 4 | Lammers 7 | Gespeen 7

Groeï					Reproduksie			
VSpn. Dir	VSpn. Mat	Spn. Dir.	Spn. Mat.	Na-Spn.	GLS	TWW	OEL	ILP
99	103	99	104	124	101	101	124	107
62%	39%	63%	33%	58%	30%	44%	29%	23%



EBV Analise 2025-09-04

Logix Meriete Indeks **103**

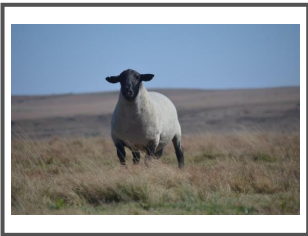
Groeï Indeks **101**

Reproduksie Indeks **109**

VERKOPER OPMERKINGS:

Geb. Gew.	5.5kg
Voorspeen	25.1kg (114)
Speen Gew.	43.8kg (105)
Na-Speen	74.1kg (105)
Volw. Gew.	-
GDT Ind.	-
VOV Ind.	-
Skrotum	-

LOT 24 (M)



TWEESEUNS

Barkley-East, Eastern Cape
0723132232
tjaart@barkly.co.za



301 240123

TWEESEUNS RAM 301 240123

Kuddeboek	SP
Geb. dtm	2024-07-25
Oud.	1.2 jaar
Inteling	39.44%
Geb. Status	3
Nageslag	Geen

301 170023 (1)
TWEESEUNS RAM 301170023

Ouerskap Vaar Moer

DNS
Genomies

301 220022 (2)
TWEESEUNS OOI 301 220022
OEL 24.1 | ILP - | OPI 107
Gelum 1 | Lammers 3 | Gespeen 3

301 150052
TWEESEUNS RAM 301 150052
TWEESEUNS OOI 301 100002
OEL 25.1 | ILP 442 | OPI 128
Gelum 5 | Lammers 10 | Gespeen 8

301 150172
TWEESEUNS OOI 301 150172
OEL 22.5 | ILP - | OPI -
Gelum 1 | Lammers 1 | Gespeen 1
TWEESEUNS RAM 301 100112
TWEESEUNS OOI 301 130008
OEL 25.6 | ILP 430 | OPI 128
Gelum 6 | Lammers 9 | Gespeen 9

301 170023
TWEESEUNS RAM 301170023
TWEESEUNS OOI 301 150172
OEL 22.5 | ILP - | OPI -
Gelum 1 | Lammers 1 | Gespeen 1

301 180283
TWEESEUNS EWE 301180283
OEL 24.8 | ILP 691 | OPI 92
Gelum 2 | Lammers 3 | Gespeen 5
TWEESEUNS RAM 301 140197
TWEESEUNS EWE 301170021
OEL 12.3 | ILP 548 | OPI 107
Gelum 5 | Lammers 7 | Gespeen 7

Groeï					Reproduksie			
VSpn. Dir	VSpn. Mat	Spn. Dir.	Spn. Mat.	Na-Spn.	GLS	TWW	OEL	ILP
99	115	117	116	128	103	117	93	91
66%	55%	65%	50%	55%	47%	55%	46%	37%



EBV Analise 2025-09-04

Logix Meriete Indeks **110**

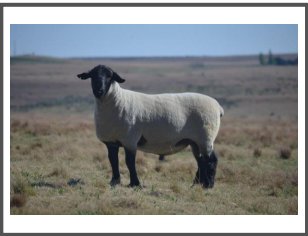
Groeï Indeks **118**

Reproduksie Indeks **114**

VERKOPER OPMERKINGS: 15 maande oud. Ent: Multivax P+, Cydecton, Ref 1.

Geb. Gew.	3kg
Voorspeen	24.2kg (110)
Speen Gew.	39.8kg (121)
Na-Speen	98.2kg (100)
Volw. Gew.	-
GDT Ind.	-
VOV Ind.	-
Skrotum	-

LOT 26 (M)



TWEESEUNS

Barkley-East, Eastern Cape
0723132232
tjaart@barkly.co.za



301 240340

TWEESEUNS RAM 301 240340

Kuddeboek	SP
Geb. dtm	2024-08-04
Oud.	1.2 jaar
Inteling	17.9%
Geb. Status	1
Nageslag	Geen

301 210098 (1)
TWEESEUNS RAM 301 210098

Ouerskap Vaar Moer

DNS
Genomies

301 160031 (2)
TWEESEUNS EWE 301160031
OEL 35.4 | ILP 457 | OPI 97
Gelum 5 | Lammers 5 | Gespeen 5

301 190044
TWEESEUNS RAM 301190044
TWEESEUNS OOI 301 120060
OEL 24.1 | ILP 362 | OPI 131
Gelum 6 | Lammers 9 | Gespeen 9

301 170116
TWEESEUNS EWE 301170116
OEL 25.1 | ILP 347 | OPI 93
Gelum 3 | Lammers 4 | Gespeen 3
TWEESEUNS RAM 301 150052
TWEESEUNS OOI 301 120098
OEL 14.1 | ILP 441 | OPI 121
Gelum 5 | Lammers 8 | Gespeen 8

301 150052
TWEESEUNS RAM 301 150052
TWEESEUNS OOI 301 100002
OEL 25.1 | ILP 442 | OPI 128
Gelum 5 | Lammers 10 | Gespeen 8

301 110063
TWEESEUNS OOI 301 110063
OEL 24.5 | ILP 371 | OPI 139
Gelum 5 | Lammers 11 | Gespeen 9
TWEESEUNS RAM 301 070028
TWEESEUNS OOI 301 050028
OEL 12 | ILP 358 | OPI 136
Gelum 6 | Lammers 13 | Gespeen 5

Groeï					Reproduksie			
VSpn. Dir	VSpn. Mat	Spn. Dir.	Spn. Mat.	Na-Spn.	GLS	TWW	OEL	ILP
122	108	95	110	85	99	99	97	95
63%	44%	61%	41%	45%	39%	48%	36%	31%



EBV Analise 2025-09-04

Logix Meriete Indeks **110**

Groeï Indeks **110**

Reproduksie Indeks **101**

VERKOPER OPMERKINGS: 15 maande oud. Ent: Multivax P+, Cydecton, Ref 1.

Geb. Gew.	5kg
Voorspeen	22kg (100)
Speen Gew.	35.7kg (108)
Na-Speen	101.2kg (103)
Volw. Gew.	-
GDT Ind.	-
VOV Ind.	-
Skrotum	-



SUFFOLK NASIONALE VEILING

BE HUMAN, BLOEMFONTEIN 04 October 2025



LOT 27 (M)



TWEESEUNS

Barkley-East, Eastern Cape
0723132232
tjaart@barkly.co.za

301 240174

TWEESEUNS RAM 301 240174



Herd Book	SP
Birth date	2024-07-26
Age	1.2 years
Inbreeding	15.25%
Birth Stat.	3
Progeny	None

301 200108 (1)
TWEESEUNS RAM 301 200108

Parentage Sire Dam
DNA
Genomic

301 190011 (1)
TWEESEUNS EWE 301190011
AFL 36.2 | ILP 724 | EPI 105
Lambled 2 | Lams 5 | Weaned 5

301 130033
TWEESEUNS RAM 301 130033
TWEESEUNS RAM 301 100140
TWEESEUNS OOI 301 110007
AFL 24.6 | ILP 458 | EPI 117
Lambled 5 | Lams 7 | Weaned 6

301 170081
TWEESEUNS EWE 301170081
AFL 25.3 | ILP 729 | EPI 87
Lambled 3 | Lams 3 | Weaned 2
TWEESEUNS RAM 301 150052
TWEESEUNS OOI 301 100120
AFL 35.1 | ILP 369 | EPI 122
Lambled 6 | Lams 9 | Weaned 7

301 170023
TWEESEUNS RAM 301170023
TWEESEUNS RAM 301 150052
TWEESEUNS OOI 301 150172
AFL 22.5 | ILP - | EPI -
Lambled 1 | Lams 1 | Weaned 1

301 150077
TWEESEUNS RAM 301 130217
TWEESEUNS OOI 301 150077
AFL 22.8 | ILP 322 | EPI 112
Lambled 9 | Lams 12 | Weaned 9
TWEESEUNS OOI 301 100060
AFL 60.7 | ILP 537 | EPI 92
Lambled 3 | Lams 4 | Weaned 4

Growth					Reproduction			
PreWn. Dir	PreWn. Mat.	Wn. Dir.	Wean Mat.	Post-Wn.	NLW	TWW	AFL	ILP
88	116	100	113	97	103	106	99	99
66%	49%	65%	44%	49%	41%	51%	39%	32%



EBV Analysis 2025-09-04

Logix Merit Index	103
Growth Index	103
Reproduction Index	110

SELLER REMARKS: 15 maande oud. Ent: Multivax P+, Cydecton, Ref 1.

Birth Wt.	3kg
Pre-Wean	23kg (105)
Wean Wt.	32kg (97)
Post-Wean	-
Mature Wt.	-
ADG Ind.	-
FCR Ind.	-
Scrotum	-

LOT 28 (F)



GOOSEN SUFFOLK STOET

Hertzogville, Free State
0609767275
linnetteg@hertzogville.co.za

369 230030

GSS EWE 369230030



Herd Book	SP	
Birth date	2023-07-19	
Age	2.2 years	
Inbreeding	13.12%	
Birth Stat.	1	
AFL	ILP	EPI
15m	-	-
Lambled	1	
Lams (Sucking)	1 (0)	
Weaned	0	

301 210260 (1)
TWEESEUNS RAM 301 210260

Parentage Sire Dam
DNA
Genomic

353 160006 (2)
DEBAK EWE 353160006
AFL 25.6 | ILP 361 | EPI 129
Lambled 6 | Lams 8 | Weaned 7

301 190016
TWEESEUNS RAM 301190016
TWEESEUNS EWE 301160075
AFL 23.1 | ILP 611 | EPI 102
Lambled 4 | Lams 7 | Weaned 7

301 160029
TWEESEUNS EWE 301160029
AFL 23.6 | ILP 545 | EPI 110
Lambled 5 | Lams 8 | Weaned 8
TWEESEUNS RAM 301 100112
TWEESEUNS OOI 301 110172
AFL 24.8 | ILP 604 | EPI 98
Lambled 4 | Lams 5 | Weaned 4

301 140120
TWEESEUNS RAM 301 140120
TWEESEUNS OOI 301 090101
AFL 23.2 | ILP 366 | EPI 122
Lambled 4 | Lams 7 | Weaned 5

353 100068
DEBAK OOI 353100068
AFL - | ILP 359 | EPI 100
Lambled 5 | Lams 8 | Weaned 6

Growth					Reproduction			
PreWn. Dir	PreWn. Mat.	Wn. Dir.	Wean Mat.	Post-Wn.	NLW	TWW	AFL	ILP
88	102	101	102	94	95	98	99	86
64%	44%	63%	38%	30%	35%	47%	36%	24%



EBV Analysis 2025-09-04

Logix Merit Index	91
Growth Index	97
Reproduction Index	92

SELLER REMARKS: Dragtig met lling van ram 353 22-047. Ent: Multivax P+, Bloutong, Glanvac 3.

Birth Wt.	4.9kg
Pre-Wean	17.5kg (100)
Wean Wt.	29.4kg (100)
Post-Wean	-
Mature Wt.	-
ADG Ind.	-
FCR Ind.	-
Scrotum	-

LOT 29 (F)



GOOSEN SUFFOLK STOET

Hertzogville, Free State
0609767275
linnetteg@hertzogville.co.za

369 230001

GSS EWE 369230001



Herd Book	SP	
Birth date	2023-07-13	
Age	2.2 years	
Inbreeding	16.48%	
Birth Stat.	2	
AFL	ILP	EPI
-	-	-

301 210260 (1)
TWEESEUNS RAM 301 210260

Parentage Sire Dam
DNA
Genomic

369 200012 (1)
GSS OOI 369200012
AFL 12 | ILP 368 | EPI 102
Lambled 4 | Lams 6 | Weaned 6

301 190016
TWEESEUNS RAM 301190016
TWEESEUNS EWE 301160075
AFL 23.1 | ILP 611 | EPI 102
Lambled 4 | Lams 7 | Weaned 7

301 160029
TWEESEUNS EWE 301160029
AFL 23.6 | ILP 545 | EPI 110
Lambled 5 | Lams 8 | Weaned 8
TWEESEUNS RAM 301 100112
TWEESEUNS OOI 301 110172
AFL 24.8 | ILP 604 | EPI 98
Lambled 4 | Lams 5 | Weaned 4

301 180050
TWEESEUNS RAM 301180050
TWEESEUNS EWE 301160224
AFL 23.2 | ILP 910 | EPI 90
Lambled 3 | Lams 4 | Weaned 4

353 160056
DEBAK EWE 353160056
AFL 20.9 | ILP 487 | EPI 103
Lambled 4 | Lams 5 | Weaned 4
DEBAK EWE 353150018
AFL 15.1 | ILP 252 | EPI 88
Lambled 2 | Lams 2 | Weaned 2

Growth					Reproduction			
PreWn. Dir	PreWn. Mat.	Wn. Dir.	Wean Mat.	Post-Wn.	NLW	TWW	AFL	ILP
99	97	107	99	104	103	106	124	93
63%	42%	61%	36%	31%	30%	44%	32%	23%



EBV Analysis 2025-09-04

Logix Merit Index	105
Growth Index	103
Reproduction Index	103

SELLER REMARKS: Dragtig van ram 375 22024. Ent: Multivax P+, Bloutong, Glanvac 3.

Birth Wt.	4.2kg
Pre-Wean	19.8kg (113)
Wean Wt.	34.6kg (118)
Post-Wean	-
Mature Wt.	-
ADG Ind.	-
FCR Ind.	-
Scrotum	-



SUFFOLK NASIONALE VEILING

BE HUMAN, BLOEMFONTEIN 04 October 2025



LOT 30 (F)



GOOSEN SUFFOLK STOET

Hertzogville, Free State
0609767275
linnetteg@hertzogville.co.za

369 240016

GSS OOI 369 240016



Kuddeboek	SP	
Geb. dtm	2024-07-29	
Oud.	1.2 jaar	
Inteling	9.33%	
Geb. Status	2	
OEL	ILP	OPI
-	-	-

284 220144 (1)
ALMAU RAM 284 220144

Ouerskap Vaar Moer

DNS

Genomies

369 220012 (1)
GSS OOI 369220012

OEL 24 | ILP - | OPI 102
Gelum 1 | Lammers 2 | Gespeen 2

364 190003
VBS RAM 364190003

284 190009
ALMAU OOI 284190009
OEL 24.9 | ILP 356 | OPI 98
Gelum 4 | Lammers 5 | Gespeen 4

350 200025
GERSURE RAM 350200025

369 200021
GSS EWE 369200021
OEL 23.5 | ILP 365 | OPI 115
Gelum 3 | Lammers 5 | Gespeen 5

GERHARD RAM 350170006
TWEESEUNS EWE 301170222
OEL 12.3 | ILP 366 | OPI 96
Gelum 7 | Lammers 9 | Gespeen 5

ALMAU RAM 284180007
ALMAU OOI 284 150108
OEL 23.5 | ILP 362 | OPI 152
Gelum 7 | Lammers 16 | Gespeen 13

GERSURE RAM 350170013
ALMAU OOI 284 160055
OEL 24 | ILP 363 | OPI 135
Gelum 6 | Lammers 8 | Gespeen 8

DEBAK RAM 353160012
DEBAK OOI 353190270
OEL - | ILP 354 | OPI 100
Gelum 4 | Lammers 7 | Gespeen 6

Groei					Reproduksie			
VSpn. Dir	VSpn. Mat	Spn. Dir.	Spn. Mat.	Na-Spn.	GLS	TWW	OEL	ILP
79	111	86	109	110	90	86	106	96
63%	36%	61%	29%	56%	25%	40%	24%	17%



Logix Meriete Indeks	81
Groei Indeks	90
Reproduksie Indeks	94

VERKOPER OPMERKINGS: Ent: Multivax P+, Glanvac 3.

Geb. Gew.	3kg
Voorspeen	21.9kg (123)
Speen Gew.	28kg (102)
Na-Speen	56.1kg (111)
Volw. Gew.	-
GDT Ind.	-
VOV Ind.	-
Skrotum	-

LOT 31 (F)



VREDESIG FORBES

Darling, Western Cape
0825442336
wijjforbes@gmail.com

375 240169

VREDESIG OOI 375 240169



Kuddeboek	SP	
Geb. dtm	2024-08-14	
Oud.	1.1 jaar	
Inteling	7.15%	
Geb. Status	1	
OEL	ILP	OPI
-	-	-

344 200005 (2)
LONE TREE BLOKMAN

Ouerskap Vaar Moer

DNS

Genomies

301 190155 (2)
TWEESEUNS EWE 301190155

OEL - | ILP - | OPI 110
Gelum 5 | Lammers 5 | Gespeen 4

344 170019
LONE TREE RAM 344170019

344 160014
LONE TREE EWE 344160014
OEL 12.7 | ILP 355 | OPI 100
Gelum 8 | Lammers 17 | Gespeen 17

301 150052
TWEESEUNS RAM 301 150052

301 150031
TWEESEUNS EWE 301150031
OEL 24 | ILP 451 | OPI 105
Gelum 5 | Lammers 8 | Gespeen 8

TWEESEUNS RAM 301 130033
LONE TREE EWE 344150029
OEL 26.1 | ILP 338 | OPI 98
Gelum 2 | Lammers 3 | Gespeen 2

TWEESEUNS RAM 301 130033
LONE TREE EWE 344140060
OEL 21.5 | ILP - | OPI 91
Gelum 1 | Lammers 2 | Gespeen 2

TWEESEUNS RAM 301 130217
TWEESEUNS OOI 301 100002
OEL 25.1 | ILP 442 | OPI 128
Gelum 5 | Lammers 10 | Gespeen 8

TWEESEUNS RAM 301 120002
TWEESEUNS OOI 301 130215
OEL 24.4 | ILP 466 | OPI 91
Gelum 4 | Lammers 4 | Gespeen 4

Groei					Reproduksie			
VSpn. Dir	VSpn. Mat	Spn. Dir.	Spn. Mat.	Na-Spn.	GLS	TWW	OEL	ILP
124	104	136	107	123	84	110	91	75
64%	44%	64%	42%	56%	40%	50%	36%	29%



Logix Meriete Indeks	111
Groei Indeks	134
Reproduksie Indeks	94

VERKOPER OPMERKINGS: Was deel van die skou groep in 2025 en het baie goed gevaar ! Ooi met die hoogste groei syfer op die veiling. Entings; Inmeva , Blu Vax, Glanvac 3 en Multivax P. Plus. Oop ooi, kom met twee strooitjies saad van 301 20 292 'yster'

Geb. Gew.	3kg
Voorspeen	39.6kg (132)
Speen Gew.	34kg (121)
Na-Speen	62.1kg (120)
Volw. Gew.	-
GDT Ind.	-
VOV Ind.	-
Skrotum	-

LOT 32 (F)



VREDESIG FORBES

Darling, Western Cape
0825442336
wijjforbes@gmail.com

375 240140

VREDESIG OOI 375 240140



Kuddeboek	SP	
Geb. dtm	2024-08-11	
Oud.	1.1 jaar	
Inteling	16.89%	
Geb. Status	2	
OEL	ILP	OPI
-	-	-

301 220073 (1)
TWEESEUNS RAM 301 220073

Ouerskap Vaar Moer

DNS

Genomies

301 210145 (2)
TWEESEUNS OOI 301 210145

OEL 14.4 | ILP 334 | OPI 111
Gelum 3 | Lammers 5 | Gespeen 4

301 210089
TWEESEUNS RAM 301 210089

301 200192
TWEESEUNS OOI 301 200192
OEL 23.8 | ILP - | OPI 91
Gelum 1 | Lammers 1 | Gespeen 1

301 130033
TWEESEUNS RAM 301 130033

301 170074
TWEESEUNS EWE 301170074
OEL 25.3 | ILP 356 | OPI 116
Gelum 6 | Lammers 8 | Gespeen 7

TWEESEUNS RAM 301190044
TWEESEUNS EWE 301170140
OEL 23.9 | ILP 367 | OPI 110
Gelum 5 | Lammers 7 | Gespeen 7

GERHARD RAM 350170006
TWEESEUNS EWE 301160221
OEL 23.4 | ILP 359 | OPI 103
Gelum 3 | Lammers 8 | Gespeen 8

TWEESEUNS RAM 301 100140
TWEESEUNS OOI 301 110007
OEL 24.6 | ILP 458 | OPI 117
Gelum 5 | Lammers 7 | Gespeen 6

TWEESEUNS RAM 301 150052
TWEESEUNS OOI 301 140209
OEL 24.1 | ILP 450 | OPI 102
Gelum 5 | Lammers 8 | Gespeen 8

Groei					Reproduksie			
VSpn. Dir	VSpn. Mat	Spn. Dir.	Spn. Mat.	Na-Spn.	GLS	TWW	OEL	ILP
78	106	104	105	110	106	109	101	89
64%	41%	63%	36%	50%	34%	46%	32%	27%



Logix Meriete Indeks	95
Groei Indeks	97
Reproduksie Indeks	104

VERKOPER OPMERKINGS: Goed gebalanseerde ooi. Entings; Inmeva , Blu Vax, Glanvac 3 en Multivax P. Plus. Oop ooi, kom met twee strooitjies saad van 344 20 005 'Blokman'.

Geb. Gew.	3kg
Voorspeen	32.7kg (109)
Speen Gew.	33.3kg (119)
Na-Speen	64.3kg (124)
Volw. Gew.	-
GDT Ind.	-
VOV Ind.	-
Skrotum	-



SUFFOLK NASIONALE VEILING

BE HUMAN, BLOEMFONTEIN 04 October 2025



LOT 33 (F)



VREDESIG FORBES

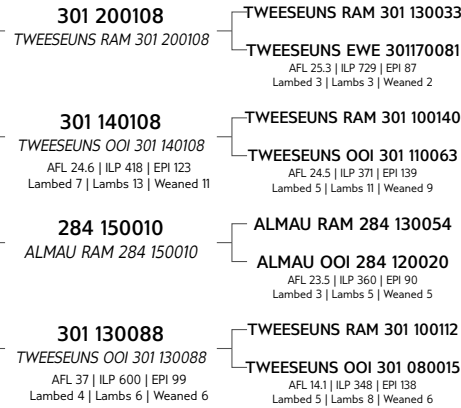
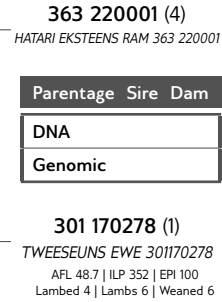
Darling, Western Cape
0825442336
wijjforbes@gmail.com



375 240136

VREDESIG OOI 375 240136

Herd Book	SP	
Birth date	2024-08-11	
Age	1.1 years	
Inbreeding	8.86%	
Birth Stat.	1	
AFL	ILP	EPI
-	-	-



Growth					Reproduction			
PreWn. Dir	PreWn. Mat.	Wn. Dir.	Wean Mat.	Post-Wn.	NLW	TWW	AFL	ILP
98	93	97	93	105	99	95	109	102
53%	35%	52%	32%	43%	30%	39%	25%	23%



EBV Analysis 2025-09-04

Logix Merit Index	95
Growth Index	93
Reproduction Index	95

Birth Wt.	3kg
Pre-Wean	29.9kg (99)
Wean Wt.	24.2kg (86)
Post-Wean	52.1kg (101)
Mature Wt.	-
ADG Ind.	-
FCR Ind.	-
Scrotum	-

SELLER REMARKS: Ooi met goeie bouvorm. Entings; Inmeva, Blu Vax, Glenvac 3 en Multi-vax P-Plus. Oop ooi, kom met twee strootjies saad van 344 20 005 'Blokman'.

LOT 34 (F)



OTTERKUIL BOERDERY

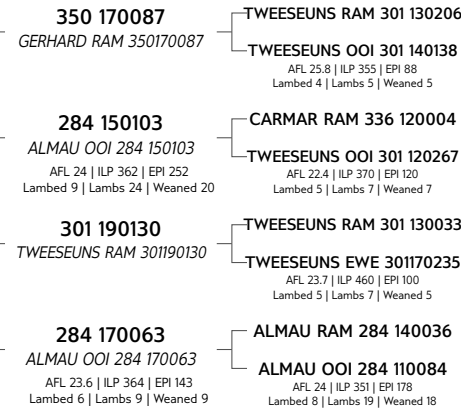
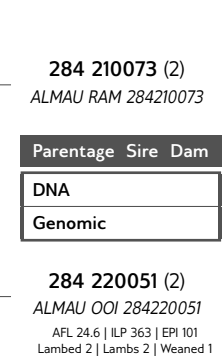
Paarl, Western Cape
0832702134
albertkotze@otterkuil.co.za



284 240018

ALMAU EWE 284240018

Herd Book	SP	
Birth date	2024-07-16	
Age	1.2 years	
Inbreeding	7.87%	
Birth Stat.	1	
AFL	ILP	EPI
-	-	-



Growth					Reproduction			
PreWn. Dir	PreWn. Mat.	Wn. Dir.	Wean Mat.	Post-Wn.	NLW	TWW	AFL	ILP
106	110	103	111	132	104	108	111	107
62%	39%	62%	33%	58%	31%	44%	30%	24%



EBV Analysis 2025-09-04

Logix Merit Index	110
Growth Index	110
Reproduction Index	116

Birth Wt.	5kg
Pre-Wean	24.1kg (120)
Wean Wt.	43.8kg (118)
Post-Wean	66.1kg (111)
Mature Wt.	-
ADG Ind.	-
FCR Ind.	-
Scrotum	-

SELLER REMARKS: Een van Almau se bestes. Dogter van 284 21-073 (Vrugbaarste ram in Almau se geskiedenis). Uitstekende groeier en TOP BLUP ooi. Ent: Multivax P+, Onderstepoort Pasteurella, Bloutong(2024) Ensiotiese Aborsie.

LOT 35 (F)



OTTERKUIL BOERDERY

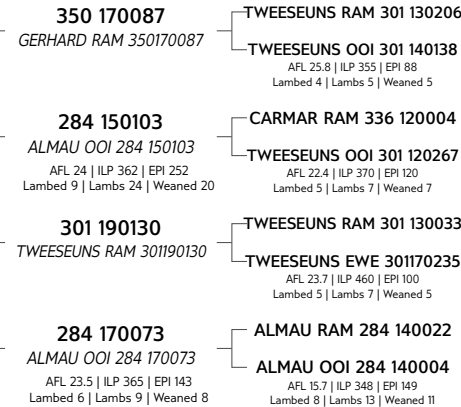
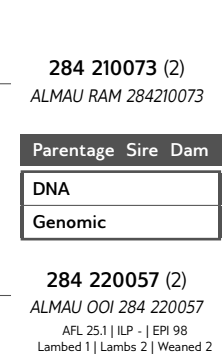
Paarl, Western Cape
0832702134
albertkotze@otterkuil.co.za



284 240060

ALMAU OOI 284240060

Herd Book	SP	
Birth date	2024-07-30	
Age	1.2 years	
Inbreeding	7.86%	
Birth Stat.	2	
AFL	ILP	EPI
-	-	-



Growth					Reproduction			
PreWn. Dir	PreWn. Mat.	Wn. Dir.	Wean Mat.	Post-Wn.	NLW	TWW	AFL	ILP
105	103	110	105	130	98	106	99	91
63%	40%	63%	34%	59%	30%	44%	29%	22%



EBV Analysis 2025-09-04

Logix Merit Index	102
Growth Index	110
Reproduction Index	101

Birth Wt.	4.8kg
Pre-Wean	23.8kg (119)
Wean Wt.	43.7kg (118)
Post-Wean	68.9kg (116)
Mature Wt.	-
ADG Ind.	-
FCR Ind.	-
Scrotum	-

SELLER REMARKS: Een van Almau se bestes. Dogter van 284 21-073 (Vrugbaarste ram in Almau se geskiedenis). Uitstekende groeier. Ent: Multi-vax P+, Onderstepoort Pasteurella, Bloutong(2024) Ensiotiese Aborsie.



SUFFOLK NASIONALE VEILING

BE HUMAN, BLOEMFONTEIN 04 October 2025



LOT 36 (F)

284 240050

ALMAU EWE 284240050



Kuddeboek	SP	
Geb. dtm	2024-07-20	
Oud.	1.2 jaar	
Inteling	7.44%	
Geb. Status	2	
OEL	ILP	OPI
-	-	-

OTTERKUIL BOERDERY



Paarl, Western Cape
0832702134
albertkotze@otterkuil.co.za

344 200005 (2)
LONE TREE BLOKMAN

Ouerskap Vaar Moer

DNS

Genomies

284 150103 (2)
ALMAU OOI 284 150103

OEL 24 | ILP 362 | OPI 252
Gelum 9 | Lammers 24 | Gespeen 20

344 170019
LONE TREE RAM 344170019

TWEESEUNS RAM 301 130033
LONE TREE EWE 344150029
OEL 26.1 | ILP 338 | OPI 98
Gelum 2 | Lammers 3 | Gespeen 2

344 160014
LONE TREE EWE 344160014

TWEESEUNS RAM 301 130033
LONE TREE EWE 344140060
OEL 21.5 | ILP - | OPI 91
Gelum 1 | Lammers 2 | Gespeen 2

336 120004
CARMAR RAM 336 120004

ALMAU RAM 284 050074
ABRATO EWE 257 060037
OEL 35.8 | ILP 607 | OPI 100
Gelum 4 | Lammers 6 | Gespeen 1

301 120267
TWEESEUNS OOI 301 120267

TWEESEUNS RAM 301 080040
TWEESEUNS OOI 301 090190
OEL 22.4 | ILP 370 | OPI 120
Gelum 5 | Lammers 7 | Gespeen 7

Groei					Reproduksie			
VSpn. Dir	VSpn. Mat	Spn. Dir.	Spn. Mat.	Na-Spn.	GLS	TWW	OEL	ILP
119	98	120	99	117	120	128	91	87
67%	47%	67%	42%	63%	40%	51%	34%	27%



EBV Analise 2025-09-04

Logix Meriete Indeks **123**

Groei Indeks **118**

Reproduksie Indeks **113**

Geb. Gew.	5kg
Voorspeen	21.2kg (106)
Speen Gew.	38.6kg (104)
Na-Speen	60.8kg (102)
Volw. Gew.	-
GDT Ind.	-
VOV Ind.	-
Skrotum	-

VERKOPER OPMERKINGS: Waar syfers en vrugbaarheids bymekaar kom. Haar ma (284 15-103) Almau se vrugbaarste ooi ooit, 9 kere gelam, 24 lammers gelam. Ent: Multivax P+, Onderstepoort Pasteurella, Bloutong(2024) Ensiotiese Aborsie.

LOT 37 (F)

350 240021

GERSURE EWE 350240021



Kuddeboek	SP	
Geb. dtm	2024-07-19	
Oud.	1.2 jaar	
Inteling	10.12%	
Geb. Status	2	
OEL	ILP	OPI
-	-	-

GERT MALHERBE BRDY

Hertzogville, Free State
0828079216
gert@graslaagte.co.za

284 220144 (1)
ALMAU RAM 284 220144

Ouerskap Vaar Moer

DNS

Genomies

350 210076 (1)
GERSURE OOI 350 210076

OEL 24 | ILP 364 | OPI 89
Gelum 2 | Lammers 3 | Gespeen 1

364 190003
VBS RAM 364190003

GERHARD RAM 350170006
TWEESEUNS EWE 301170222
OEL 12.3 | ILP 366 | OPI 96
Gelum 7 | Lammers 9 | Gespeen 5

284 190009
ALMAU OOI 284190009

ALMAU RAM 284180007
ALMAU OOI 284 150108
OEL 23.5 | ILP 362 | OPI 152
Gelum 7 | Lammers 16 | Gespeen 13

350 170013
GERSURE RAM 350170013

TWEESEUNS RAM 301 130206
GERHARD EWE 350150005
OEL 15.8 | ILP 357 | OPI 89
Gelum 3 | Lammers 5 | Gespeen 5

301 140023
TWEESEUNS OOI 301 140023

TWEESEUNS RAM 301 080012
TWEESEUNS OOI 301 080129
OEL 25 | ILP 363 | OPI 106
Gelum 7 | Lammers 10 | Gespeen 7

Groei					Reproduksie			
VSpn. Dir	VSpn. Mat	Spn. Dir.	Spn. Mat.	Na-Spn.	GLS	TWW	OEL	ILP
90	105	99	104	105	76	81	105	86
63%	38%	62%	32%	55%	30%	43%	27%	24%



EBV Analise 2025-09-04

Logix Meriete Indeks **79**

Groei Indeks **98**

Reproduksie Indeks **80**

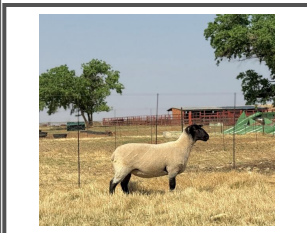
Geb. Gew.	3.9kg
Voorspeen	17.2kg (113)
Speen Gew.	30.7kg (109)
Na-Speen	47.9kg (96)
Volw. Gew.	-
GDT Ind.	-
VOV Ind.	-
Skrotum	-

VERKOPER OPMERKINGS:

LOT 38 (F)

350 240031

GERSURE EWE 350240031



Kuddeboek	SP	
Geb. dtm	2024-09-18	
Oud.	1 jaar	
Inteling	10.63%	
Geb. Status	2	
OEL	ILP	OPI
-	-	-

GERT MALHERBE BRDY

Hertzogville, Free State
0828079216
gert@graslaagte.co.za

284 220144 (1)
ALMAU RAM 284 220144

Ouerskap Vaar Moer

DNS

Genomies

350 210083 (2)
GERSURE EWE 350210083

OEL 14.6 | ILP 356 | OPI 107
Gelum 3 | Lammers 4 | Gespeen 4

364 190003
VBS RAM 364190003

GERHARD RAM 350170006
TWEESEUNS EWE 301170222
OEL 12.3 | ILP 366 | OPI 96
Gelum 7 | Lammers 9 | Gespeen 5

284 190009
ALMAU OOI 284190009

ALMAU RAM 284180007
ALMAU OOI 284 150108
OEL 23.5 | ILP 362 | OPI 152
Gelum 7 | Lammers 16 | Gespeen 13

350 180221
GERSURE RAM 35018221

TWEESEUNS RAM 301 130206
GERHARD EWE 350170150
OEL 17.4 | ILP 445 | OPI 100
Gelum 4 | Lammers 7 | Gespeen 6

350 170015
GERHARD EWE 350170015

TWEESEUNS RAM 301 130206
GERHARD EWE 350150005
OEL 15.8 | ILP 357 | OPI 89
Gelum 3 | Lammers 5 | Gespeen 5

Groei					Reproduksie			
VSpn. Dir	VSpn. Mat	Spn. Dir.	Spn. Mat.	Na-Spn.	GLS	TWW	OEL	ILP
73	104	78	101	101	86	76	102	103
56%	37%	56%	30%	48%	28%	40%	23%	22%



EBV Analise 2025-09-04

Logix Meriete Indeks **71**

Groei Indeks **78**

Reproduksie Indeks **86**

Geb. Gew.	4kg
Voorspeen	31.2kg (100)
Speen Gew.	54.7kg (100)
Na-Speen	47.8kg (103)
Volw. Gew.	-
GDT Ind.	-
VOV Ind.	-
Skrotum	-

VERKOPER OPMERKINGS:

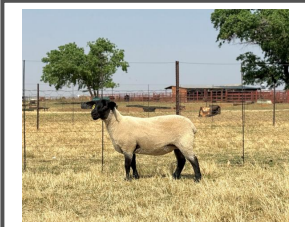


SUFFOLK NASIONALE VEILING

BE HUMAN, BLOEMFONTEIN 04 October 2025



LOT 39 (F)



GERT MALHERBE BRDY

Hertzogville, Free State
0828079216
gert@graslaagte.co.za

350 240218

GERSURE EWE 350240218



Herd Book	SP	
Birth date	2024-09-29	
Age	1 years	
Inbreeding	21.16%	
Birth Stat.	2	
AFL	ILP	EPI
-	-	-



301 210227 (2)
TWEESEUNS RAM 301210227

Parentage Sire Dam

DNA

Genomic

301 210043 (3)
TWEESEUNS OOI 301 210043

AFL 24.2 | ILP 419 | EPI 97
Lambd 2 | Lams 3 | Weaned 2

301 190044
TWEESEUNS RAM 301190044

TWEESEUNS RAM 301 130033
TWEESEUNS OOI 301 120060
AFL 24.1 | ILP 362 | EPI 131
Lambd 6 | Lams 9 | Weaned 9

301 160006
TWEESEUNS EWE 301160006

TWEESEUNS RAM 301 100140
TWEESEUNS OOI 301 110028
AFL 24.9 | ILP 458 | EPI 99
Lambd 5 | Lams 5 | Weaned 4

301 190044
TWEESEUNS RAM 301190044

TWEESEUNS RAM 301 130033
TWEESEUNS OOI 301 120060
AFL 24.1 | ILP 362 | EPI 131
Lambd 6 | Lams 9 | Weaned 9

301 170282
TWEESEUNS EWE 301170282

ALMAU RAM 284 150010
TWEESEUNS OOI 301 150034
AFL 23.9 | ILP 841 | EPI 95
Lambd 4 | Lams 7 | Weaned 7

Growth					Reproduction			
PreWn. Dir	PreWn. Mat.	Wn. Dir.	Wean Mat.	Post-Wn.	NLW	TWW	AFL	ILP
133	99	102	103	91	106	107	114	105
63%	42%	61%	37%	45%	34%	46%	33%	27%



EBV Analysis 2025-09-04

Logix Merit Index **123**

Growth Index **114**

Reproduction Index **111**

SELLER REMARKS:

Birth Wt.	3kg
Pre-Wean	21.3kg (116)
Wean Wt.	31kg (107)
Post-Wean	48.7kg (105)
Mature Wt.	-
ADG Ind.	-
FCR Ind.	-
Scrotum	-

LOT 40 (F)



CHRISRCROSS SUFFOLKS

Middelburg, Eastern Cape
0845134923
chrisna6666@gmail.com

343 240192

CHRISRCROSS OOI 343 240192



Herd Book	SP	
Birth date	2024-08-10	
Age	1.1 years	
Inbreeding	22.4%	
Birth Stat.	2	
AFL	ILP	EPI
-	-	-



343 210039 (1)
CHRISRCROSS RAM 343 210039

Parentage Sire Dam

DNA

Genomic

343 190099 (2)
CHRISRCROSS EWE 343190099

AFL 22.8 | ILP 365 | EPI 104
Lambd 4 | Lams 6 | Weaned 6

301 150130
TWEESEUNS RAM 301 150130

TWEESEUNS RAM 301 120001
TWEESEUNS OOI 301 100008
AFL 25 | ILP 364 | EPI 118
Lambd 5 | Lams 8 | Weaned 7

343 160115
CHRISRCROSS OOI 343 160115

TWEESEUNS RAM 301 100114
CHRISRCROSS EWE 343150001
AFL - | ILP - | EPI -
Lambd 6 | Lams 5 | Weaned 1

301 100114
TWEESEUNS RAM 301 100114

TWEESEUNS RAM 301 070028
TWEESEUNS OOI 301 060082
AFL 23.9 | ILP 367 | EPI 121
Lambd 3 | Lams 6 | Weaned 2

343 150008
CHRISRCROSS EWE 343150008

TWEESEUNS RAM 301 100114
CHRISRCROSS OOI 343 120021
AFL 36.4 | ILP 363 | EPI -
Lambd 4 | Lams 7 | Weaned -

Growth					Reproduction			
PreWn. Dir	PreWn. Mat.	Wn. Dir.	Wean Mat.	Post-Wn.	NLW	TWW	AFL	ILP
105	95	104	95	103	94	96	97	119
64%	48%	63%	42%	59%	33%	48%	38%	32%



EBV Analysis 2025-09-04

Logix Merit Index **102**

Growth Index **101**

Reproduction Index **102**

SELLER REMARKS: Ent: Bloutong A,B,C / Multivax - P+

Birth Wt.	3kg
Pre-Wean	19.7kg (100)
Wean Wt.	30.6kg (102)
Post-Wean	42.9kg (103)
Mature Wt.	-
ADG Ind.	-
FCR Ind.	-
Scrotum	-

LOT 41 (F)



CHRISRCROSS SUFFOLKS

Middelburg, Eastern Cape
0845134923
chrisna6666@gmail.com

343 240206

CHRISRCROSS OOI 343 240206



Herd Book	SP	
Birth date	2024-08-10	
Age	1.1 years	
Inbreeding	19.16%	
Birth Stat.	1	
AFL	ILP	EPI
-	-	-



343 210039 (1)
CHRISRCROSS RAM 343 210039

Parentage Sire Dam

DNA

Genomic

343 210048 (2)
CHRISRCROSS OOI 343 210048

AFL 23.9 | ILP 397 | EPI 98
Lambd 2 | Lams 3 | Weaned 3

301 150130
TWEESEUNS RAM 301 150130

TWEESEUNS RAM 301 120001
TWEESEUNS OOI 301 100008
AFL 25 | ILP 364 | EPI 118
Lambd 5 | Lams 8 | Weaned 7

343 160115
CHRISRCROSS OOI 343 160115

TWEESEUNS RAM 301 100114
CHRISRCROSS EWE 343150001
AFL - | ILP - | EPI -
Lambd 6 | Lams 5 | Weaned 1

350 180101
GERSURE RAM 35018101

TWEESEUNS RAM 301 140021
TWEESEUNS OOI 301 140138
AFL 25.8 | ILP 355 | EPI 88
Lambd 4 | Lams 5 | Weaned 5

343 190038
CHRISRCROSS EWE 343190038

TWEESEUNS RAM 301 150130
CHRISRCROSS OOI 343 160042
AFL 36.2 | ILP 364 | EPI 107
Lambd 4 | Lams 8 | Weaned 5

Growth					Reproduction			
PreWn. Dir	PreWn. Mat.	Wn. Dir.	Wean Mat.	Post-Wn.	NLW	TWW	AFL	ILP
99	105	104	107	112	93	99	99	103
63%	45%	63%	40%	60%	34%	47%	36%	27%



EBV Analysis 2025-09-04

Logix Merit Index **99**

Growth Index **105**

Reproduction Index **103**

SELLER REMARKS: Ent: Bloutong A,B,C / Multivax - P+

Birth Wt.	3kg
Pre-Wean	20.5kg (104)
Wean Wt.	31.4kg (104)
Post-Wean	45.2kg (109)
Mature Wt.	-
ADG Ind.	-
FCR Ind.	-
Scrotum	-



SUFFOLK NASIONALE VEILING

BE HUMAN, BLOEMFONTEIN 04 October 2025



LOT 42 (F)

343 240053

CHRISSCROSS OOI 343 240053



Kuddeboek	SP	
Geb. dtm	2024-07-22	
Oud.	1.2 jaar	
Inteling	13.53%	
Geb. Status	1	
OEL	ILP	OPI
-	-	-

CHRISSCROSS SUFFOLKS

Middelburg, Eastern Cape
0845134923
chrisna6666@gmail.com

343 210039 (1)
CHRISSCROSS RAM 343 210039

Ouerskap	Vaar	Moer
DNS		
Genomies		

343 180038 (2)
CHRISSCROSS EWE 343180038
OEL 24.5 | ILP 288 | OPI 106
Gelam 6 | Lammers 9 | Gespeen 7

301 150130
TWEESEUNS RAM 301 150130
TWEESEUNS RAM 301 120001
TWEESEUNS OOI 301 100008
OEL 25 | ILP 364 | OPI 118
Gelam 5 | Lammers 5 | Gespeen 7

343 160115
CHRISSCROSS OOI 343 160115
OEL 37 | ILP 325 | OPI 83
Gelam 3 | Lammers 3 | Gespeen 1
TWEESEUNS RAM 301 100114
CHRISSCROSS EWE 343150001
OEL - | ILP - | OPI -
Gelam 6 | Lammers 5 | Gespeen 1

301 100174
TWEESEUNS RAM 301 100174
TWEESEUNS OOI 301 070164
OEL 22.6 | ILP 545 | OPI 84
Gelam 3 | Lammers 3 | Gespeen 2

343 130054
CHRISSCROSS EWE 343130054
OEL 24.1 | ILP 358 | OPI 97
Gelam 6 | Lammers 9 | Gespeen 1
TWEESEUNS RAM 301 090007
TWEESEUNS OOI 301 070175
OEL 22.6 | ILP 459 | OPI 83
Gelam 5 | Lammers 7 | Gespeen 1

Groei					Reproduksie			
VSpn. Dir	VSpn. Mat	Spn. Dir.	Spn. Mat.	Na-Spn.	GLS	TWW	OEL	ILP
88	92	95	92	102	95	91	95	110
64%	48%	63%	42%	59%	36%	49%	38%	31%



Logix Meriete Indeks	87
Groei Indeks	88
Reproduksie Indeks	93

VERKOPER OPMERKINGS: Ent: Bloutong
A,B,C / Multivax - P+

Geb. Gew.	3kg
Voorspeen	21kg (113)
Speen Gew.	35.7kg (110)
Na-Speen	44.8kg (107)
Volw. Gew.	-
GDT Ind.	-
VOV Ind.	-
Skrotum	-

LOT 43 (F)

353 220003

DEBAK OOI 353220003



Kuddeboek	SP	
Geb. dtm	2022-03-17	
Oud.	3.5 jaar	
Inteling	12.34%	
Geb. Status	2	
OEL	ILP	OPI
19m	276d	105
Gelam	3	
Lammers (Soog)	6 (0)	
Gespeen	4	

H.P. GELDENHUYS

Memel, Free State
0845141607
hennie1geld@gmail.com

301 180071 (2)
TWEESEUNS RAM 301180071

Ouerskap	Vaar	Moer
DNS		
Genomies		

353 190070 (1)
DEBAK EWE 353190070
OEL 32.6 | ILP 252 | OPI 105
Gelam 3 | Lammers 5 | Gespeen 5

301 160020
TWEESEUNS RAM 301160020
TWEESEUNS OOI 301 110036
OEL 24.7 | ILP 367 | OPI 127
Gelam 6 | Lammers 8 | Gespeen 7

301 160049
TWEESEUNS EWE 301160049
OEL 23.5 | ILP 501 | OPI 107
Gelam 4 | Lammers 7 | Gespeen 7
TWEESEUNS RAM 301 140197
TWEESEUNS OOI 301 100108
OEL 60.7 | ILP 348 | OPI 95
Gelam 3 | Lammers 4 | Gespeen 4

353 170031
DEBAK RAM 353170031
TWEESEUNS RAM 301 150017
TWEESEUNS OOI 301 100025
OEL 35.7 | ILP 365 | OPI 122
Gelam 6 | Lammers 11 | Gespeen 7

353 170081
DEBAK EWE 353170081
OEL 21.2 | ILP 369 | OPI 138
Gelam 4 | Lammers 6 | Gespeen 5
ALMAU RAM 284 150019
DEBAK EWE 353150022
OEL 25.6 | ILP 320 | OPI 95
Gelam 3 | Lammers 3 | Gespeen 2

Groei					Reproduksie			
VSpn. Dir	VSpn. Mat	Spn. Dir.	Spn. Mat.	Na-Spn.	GLS	TWW	OEL	ILP
119	120	110	124	101	111	122	95	95
59%	51%	61%	47%	48%	40%	51%	32%	34%



Logix Meriete Indeks	128
Groei Indeks	125
Reproduksie Indeks	125

VERKOPER OPMERKINGS: Dit is die ooi met beste syfers van Debak Suffolks. Sy was ook die Junior kampioen ooi in 2023 op Bloem en Royal skou. Ons het reeds van haar nageslag in kudde en sy is dragtig met tweeling.

Geb. Gew.	3kg
Voorspeen	18.2kg (116)
Speen Gew.	34.5kg (108)
Na-Speen	52.2kg (106)
Volw. Gew.	56kg
GDT Ind.	-
VOV Ind.	-
Skrotum	-

LOT 44 (F)

360 240022

JIP EWE 360240022



Kuddeboek	SP	
Geb. dtm	2024-06-18	
Oud.	1.3 jaar	
Inteling	7.64%	
Geb. Status	1	
OEL	ILP	OPI
-	-	-

J.I. POTGIETER

Bothaville, Free State
0834517187
laneros1189@gmail.com

360 220155 (1)
JIP RAM 360220155

Ouerskap	Vaar	Moer
DNS		
Genomies		

284 170114 (2)
ALMAU OOI 284 170114
OEL 15.7 | ILP 405 | OPI 102
Gelam 6 | Lammers 9 | Gespeen 5

301 200240
TWEESEUNS RAM 301 200240
TWEESEUNS OOI 301 150016
OEL 24.1 | ILP 420 | OPI 113
Gelam 7 | Lammers 9 | Gespeen 9

360 190090
JIP EWE 360190090
OEL 23.2 | ILP 363 | OPI 89
Gelam 4 | Lammers 4 | Gespeen 3
TWEESEUNS RAM 301170283
JIP OOI 360140302
OEL - | ILP 363 | OPI 99
Gelam 2 | Lammers 3 | Gespeen 3

284 140036
ALMAU RAM 284 140036
TWEESEUNS RAM 301 100123
ALMAU OOI 284 060025
OEL 12.5 | ILP 366 | OPI 227
Gelam 9 | Lammers 15 | Gespeen 13

284 120112
ALMAU OOI 284 120112
OEL 19.2 | ILP 389 | OPI 101
Gelam 5 | Lammers 9 | Gespeen 6
TWEESEUNS RAM 301 100123
ALMAU OOI 284 100096
OEL 28 | ILP 333 | OPI 115
Gelam 5 | Lammers 7 | Gespeen 5

Groei					Reproduksie			
VSpn. Dir	VSpn. Mat	Spn. Dir.	Spn. Mat.	Na-Spn.	GLS	TWW	OEL	ILP
107	84	100	85	98	95	92	129	135
62%	37%	61%	32%	54%	29%	42%	24%	21%



Logix Meriete Indeks	106
Groei Indeks	94
Reproduksie Indeks	105

VERKOPER OPMERKINGS: 2025 entings :
multivax p, cydectin LA, glanvac, multimin

Geb. Gew.	6.7kg
Voorspeen	22kg (113)
Speen Gew.	30kg (93)
Na-Speen	56.9kg (105)
Volw. Gew.	-
GDT Ind.	-
VOV Ind.	-
Skrotum	-



SUFFOLK NASIONALE VEILING

BE HUMAN, BLOEMFONTEIN 04 October 2025



LOT 45 (F)

360 240141

JIP EWE 360240141



Herd Book	SP	
Birth date	2024-07-06	
Age	1.2 years	
Inbreeding	9.95%	
Birth Stat.	2	
AFL	ILP	EPI
-	-	-

360 220155 (1)
JIP RAM 360220155

Parentage Sire Dam

DNA

Genomic

353 190082 (1)
DEBAK EWE 353190082
AFL 36.7 | ILP 716 | EPI 92
Lambd 2 | Lams 4 | Weaned 3

301 200240
TWEESEUNS RAM 301 200240
TWEESEUNS RAM 301 200240
TWEESEUNS OOI 301 150016
AFL 24.1 | ILP 420 | EPI 113
Lambd 7 | Lams 9 | Weaned 9

360 190090
JIP EWE 360190090
AFL 23.2 | ILP 363 | EPI 89
Lambd 4 | Lams 4 | Weaned 3
TWEESEUNS RAM 301170283
JIP OOI 360140302
AFL - | ILP 363 | EPI 99
Lambd 2 | Lams 3 | Weaned 3

353 170031
DEBAK RAM 353170031
TWEESEUNS RAM 301 150017
TWEESEUNS OOI 301 100025
AFL 35.7 | ILP 365 | EPI 122
Lambd 6 | Lams 11 | Weaned 7

353 170055
DEBAK EWE 353170055
AFL 23.1 | ILP - | EPI 84
Lambd 1 | Lams 1 | Weaned 1
ALMAU RAM 284 150019
DEBAK EWE 353150024
AFL 23.6 | ILP 479 | EPI 106
Lambd 4 | Lams 4 | Weaned 4

Growth					Reproduction			
PreWn. Dir	PreWn. Mat.	Wn. Dir.	Wean Mat.	Post-Wn.	NLW	TWW	AFL	ILP
120	98	119	101	106	90	103	102	108
59%	34%	59%	28%	50%	22%	39%	20%	17%



EBV Analysis 2025-09-04

Logix Merit Index	113
Growth Index	119
Reproduction Index	104

Birth Wt.	5.4kg
Pre-Wean	16.6kg (99)
Wean Wt.	26.8kg (102)
Post-Wean	52.2kg (103)
Mature Wt.	-
ADG Ind.	-
FCR Ind.	-
Scrotum	-

SELLER REMARKS: 2025 entings : multivax p, cydectin LA, glanvac, multimin

J.I. POTGIETER



Bothaville, Free State
0834517187
laneros1189@gmail.com

LOT 47 (F)

337 240202

OTTERVLEI EWE 337240202



Herd Book	SP	
Birth date	2024-07-17	
Age	1.2 years	
Inbreeding	8.32%	
Birth Stat.	2	
AFL	ILP	EPI
-	-	-

284 210073 (2)
ALMAU RAM 284210073

Parentage Sire Dam

DNA

Genomic

337 220042 (4)
OTTERVLEI EWE 337210042
AFL 24.7 | ILP 376 | EPI 96
Lambd 2 | Lams 4 | Weaned 2

350 170087
GERHARD RAM 350170087
TWEESEUNS RAM 301 130206
TWEESEUNS OOI 301 140138
AFL 25.8 | ILP 355 | EPI 88
Lambd 4 | Lams 5 | Weaned 5

284 150103
ALMAU OOI 284 150103
AFL 24 | ILP 362 | EPI 252
Lambd 9 | Lams 24 | Weaned 20
CARMAR RAM 336 120004
TWEESEUNS OOI 301 120267
AFL 22.4 | ILP 370 | EPI 120
Lambd 5 | Lams 7 | Weaned 7

301 190130
TWEESEUNS RAM 301190130
TWEESEUNS RAM 301 130033
TWEESEUNS EWE 301170235
AFL 23.7 | ILP 460 | EPI 100
Lambd 5 | Lams 7 | Weaned 5

284 180014
ALMAU EWE 284180014
AFL 23.7 | ILP 370 | EPI 135
Lambd 5 | Lams 11 | Weaned 10
ALMAU RAM 284 150006
ALMAU OOI 284 160056
AFL 13.3 | ILP 320 | EPI 80
Lambd 2 | Lams 2 | Weaned 1

Growth					Reproduction			
PreWn. Dir	PreWn. Mat.	Wn. Dir.	Wean Mat.	Post-Wn.	NLW	TWW	AFL	ILP
106	97	107	98	128	116	116	100	94
63%	39%	63%	33%	59%	30%	44%	29%	21%



EBV Analysis 2025-09-04

Logix Merit Index	110
Growth Index	105
Reproduction Index	109

Birth Wt.	4kg
Pre-Wean	25.5kg (113)
Wean Wt.	42.7kg (108)
Post-Wean	66.2kg (107)
Mature Wt.	-
ADG Ind.	-
FCR Ind.	-
Scrotum	-

SELLER REMARKS: Ooi met uitstekende fenotipiese- en genetiese waardes. Sy is 'n uitstekende groeier en het TOP BLUP waardes. Ent: Multivax P+, Ondersteport Pasteurella, Bloutong(2024) Ensietiese Aborsie.s

LOT 48 (F)

337 240216

OTTERVLEI EWE 337240216



Herd Book	SP	
Birth date	2024-07-19	
Age	1.2 years	
Inbreeding	5.89%	
Birth Stat.	1	
AFL	ILP	EPI
-	-	-

284 210073 (2)
ALMAU RAM 284210073

Parentage Sire Dam

DNA

Genomic

337 200209 (2)
OTTERVLEI OOI 337 200209
AFL 22.8 | ILP 376 | EPI 95
Lambd 3 | Lams 3 | Weaned 2

350 170087
GERHARD RAM 350170087
TWEESEUNS RAM 301 130206
TWEESEUNS OOI 301 140138
AFL 25.8 | ILP 355 | EPI 88
Lambd 4 | Lams 5 | Weaned 5

284 150103
ALMAU OOI 284 150103
AFL 24 | ILP 362 | EPI 252
Lambd 9 | Lams 24 | Weaned 20
CARMAR RAM 336 120004
TWEESEUNS OOI 301 120267
AFL 22.4 | ILP 370 | EPI 120
Lambd 5 | Lams 7 | Weaned 7

284 180080
ALMAU RAM 284180080
CHARDELA RAM 274150048
ALMAU OOI 284 150136
AFL 23.7 | ILP 381 | EPI 124
Lambd 6 | Lams 10 | Weaned 7

284 130093
ALMAU OOI 284 130093
AFL 21.7 | ILP 360 | EPI 132
Lambd 7 | Lams 14 | Weaned 10
TWEESEUNS RAM 301 100123
ALMAU OOI 284 110084
AFL 24 | ILP 351 | EPI 178
Lambd 8 | Lams 19 | Weaned 18

Growth					Reproduction			
PreWn. Dir	PreWn. Mat.	Wn. Dir.	Wean Mat.	Post-Wn.	NLW	TWW	AFL	ILP
97	94	97	95	121	107	102	112	111
63%	40%	62%	34%	58%	31%	44%	29%	24%



EBV Analysis 2025-09-04

Logix Merit Index	101
Growth Index	94
Reproduction Index	106

Birth Wt.	5kg
Pre-Wean	21.7kg (96)
Wean Wt.	38.9kg (99)
Post-Wean	64.8kg (105)
Mature Wt.	-
ADG Ind.	-
FCR Ind.	-
Scrotum	-

SELLER REMARKS: Blanc de Noir se beste. 9/10 punt tydens inspeksie en oom Jan Joubert se piek van al Otterkuil se ooie. Ent: Multivax P+, Ondersteport Pasteurella, Bloutong(2024) Ensietiese Aborsie.s



SUFFOLK NASIONALE VEILING

BE HUMAN, BLOEMFONTEIN 04 October 2025



LOT 49 (F)



BLANC DE NOIR



Bloemfontein, Free State
0823087668
albertkotze@otterkuil.co.za

337 240215

OTTERVLEI EWE 337240215



Kuddeboek	SP	
Geb. dtm	2024-07-18	
Oud.	1.2 jaar	
Inteling	10.59%	
Geb. Status	3	
OEL	ILP	OPI
-	-	-

284 190042 (3)

ALMAU RAM 284190042

Ouerskap Vaar Moer

DNS

Genomies

337 220149 (2)

OTTERVLEI OOI 337220149

OEL 24.1 | ILP 361 | OPI 111
Gelam 2 | Lammers 5 | Gespeen 4

350 170087

GERHARD RAM 350170087

284 150127

ALMAU OOI 284 150127

OEL 23.3 | ILP 365 | OPI 189
Gelam 8 | Lammers 16 | Gespeen 16

284 170020

ALMAU RAM 284 170020

337 200204

OTTERVLEI OOI 337 200204

OEL 23.6 | ILP 366 | OPI 138
Gelam 4 | Lammers 8 | Gespeen 5

TWEESEUNS RAM 301 130206

TWEESEUNS OOI 301 140138

OEL 25.8 | ILP 355 | OPI 88
Gelam 4 | Lammers 5 | Gespeen 5

ALMAU RAM 284 130054

ALMAU OOI 284 120114

OEL 19.2 | ILP 363 | OPI 110
Gelam 6 | Lammers 10 | Gespeen 8

ALMAU RAM 284 150006

ALMAU OOI 284 130060

OEL 24.3 | ILP 355 | OPI 146
Gelam 7 | Lammers 14 | Gespeen 8

ALMAU RAM 284180080

ALMAU EWE 284180011

OEL 13 | ILP 348 | OPI 91
Gelam 3 | Lammers 8 | Gespeen 4

Groei					Reproduksie			
VSpn. Dir	VSpn. Mat	Spn. Dir.	Spn. Mat.	Na-Spn.	GLS	TWW	OEL	ILP
104	74	101	74	102	119	108	136	130
63%	44%	62%	38%	57%	32%	46%	31%	25%



EBV Analise 2025-09-04

Logix Meriete Indeks **114**

Groei Indeks **88**

Reproduksie Indeks **113**

Geb. Gew.	2.5kg
Voorspeen	22.3kg (99)
Speen Gew.	37.3kg (95)
Na-Speen	63kg (102)
Volw. Gew.	-
GDT Ind.	-
VOV Ind.	-
Skrotum	-

VERKOPER OPMERKINGS: Sy was een van 'n vierling. Geteel uit 'n baie vrugbare moeder en vader.sEnt: Multivax P+, Ondersteptoort Pasteurella, Bloutong(2024) Ensietiese Aborsie.s

LOT 50 (F)



D. LINDE



Ladismith, Western Cape
0814955111
dewaldlinde1999@gmail.com

377 230013

MAJUBA EWE 377230013



Kuddeboek	SP	
Geb. dtm	2023-08-08	
Oud.	2.2 jaar	
Inteling	9.86%	
Geb. Status	2	
OEL	ILP	OPI
-	-	-

344 200005 (2)

LONE TREE BLOKMAN

Ouerskap Vaar Moer

DNS

Genomies

301 190037 (1)

TWEESEUNS EWE 301190037

OEL 36.5 | ILP 368 | OPI 110
Gelam 3 | Lammers 6 | Gespeen 4

344 170019

LONE TREE RAM 344170019

344 160014

LONE TREE EWE 344160014

OEL 12.7 | ILP 355 | OPI 100
Gelam 8 | Lammers 17 | Gespeen 17

301 150052

TWEESEUNS RAM 301 150052

301 160180

TWEESEUNS EWE 301160180

OEL 34.8 | ILP 608 | OPI 90
Gelam 4 | Lammers 4 | Gespeen 4

TWEESEUNS RAM 301 130033

LONE TREE EWE 344150029

OEL 26.1 | ILP 338 | OPI 98
Gelam 2 | Lammers 3 | Gespeen 2

TWEESEUNS RAM 301 130033

LONE TREE EWE 344140060

OEL 21.5 | ILP - | OPI 91
Gelam 1 | Lammers 2 | Gespeen 2

TWEESEUNS RAM 301 130217

TWEESEUNS OOI 301 100002

OEL 25.1 | ILP 442 | OPI 128
Gelam 5 | Lammers 10 | Gespeen 8

TWEESEUNS RAM 301 100140

TWEESEUNS OOI 301 110085

OEL 24.6 | ILP 486 | OPI 112
Gelam 4 | Lammers 8 | Gespeen 7

Groei					Reproduksie			
VSpn. Dir	VSpn. Mat	Spn. Dir.	Spn. Mat.	Na-Spn.	GLS	TWW	OEL	ILP
121	106	118	107	109	92	106	103	92
64%	46%	64%	42%	49%	40%	50%	35%	30%



EBV Analise 2025-09-04

Logix Meriete Indeks **113**

Groei Indeks **122**

Reproduksie Indeks **102**

Geb. Gew.	5kg
Voorspeen	19.9kg (96)
Speen Gew.	32.8kg (102)
Na-Speen	-
Volw. Gew.	-
GDT Ind.	-
VOV Ind.	-
Skrotum	-

VERKOPER OPMERKINGS: 'Blokman' dogter met goeie bouvorm en syfers. Loop met ram lam (377 25 012). Vader van lam is 363 22 53, hy was nasionale kampioen ram in 2024. Entings: Inmeva, Blu Vax, Glenvac 3 en Multivax P- Plus.

LOT 51 (F)



D. LINDE



Ladismith, Western Cape
0814955111
dewaldlinde1999@gmail.com

377 230016

MAJUBA OOI 377230016



Kuddeboek	SP	
Geb. dtm	2023-08-09	
Oud.	2.1 jaar	
Inteling	10.1%	
Geb. Status	1	
OEL	ILP	OPI
-	-	-

344 200005 (2)

LONE TREE BLOKMAN

Ouerskap Vaar Moer

DNS

Genomies

301 170093 (1)

TWEESEUNS EWE 301170093

OEL 25.2 | ILP 638 | OPI 84
Gelam 4 | Lammers 5 | Gespeen 2

344 170019

LONE TREE RAM 344170019

344 160014

LONE TREE EWE 344160014

OEL 12.7 | ILP 355 | OPI 100
Gelam 8 | Lammers 17 | Gespeen 17

301 150052

TWEESEUNS RAM 301 150052

301 130012

TWEESEUNS OOI 301 130012

OEL 25.9 | ILP 535 | OPI 111
Gelam 5 | Lammers 7 | Gespeen 7

TWEESEUNS RAM 301 130033

LONE TREE EWE 344150029

OEL 26.1 | ILP 338 | OPI 98
Gelam 2 | Lammers 3 | Gespeen 2

TWEESEUNS RAM 301 130033

LONE TREE EWE 344140060

OEL 21.5 | ILP - | OPI 91
Gelam 1 | Lammers 2 | Gespeen 2

TWEESEUNS RAM 301 130217

TWEESEUNS OOI 301 100002

OEL 25.1 | ILP 442 | OPI 128
Gelam 5 | Lammers 10 | Gespeen 8

TWEESEUNS RAM 301 100140

TWEESEUNS OOI 301 070088

OEL 70.5 | ILP - | OPI -
Gelam 1 | Lammers 2 | Gespeen -

Groei					Reproduksie			
VSpn. Dir	VSpn. Mat	Spn. Dir.	Spn. Mat.	Na-Spn.	GLS	TWW	OEL	ILP
125	99	128	101	113	91	109	101	86
56%	43%	57%	40%	48%	39%	46%	36%	30%



EBV Analise 2025-09-04

Logix Meriete Indeks **114**

Groei Indeks **126**

Reproduksie Indeks **98**

Geb. Gew.	6kg
Voorspeen	25.9kg (100)
Speen Gew.	37kg (100)
Na-Speen	-
Volw. Gew.	-
GDT Ind.	-
VOV Ind.	-
Skrotum	-

VERKOPER OPMERKINGS: 'Blokman' dogter met goeie bouvorm en syfers. Loop met ram lammers (377 25 013) en (377 25 014) Vader van lammers is 363 22 53, hy was nasionale kampioen ram in 2024. Entings: Inmeva, Blu Vax, Glenvac 3 en Multivax P- Plus.



SUFFOLK NASIONALE VEILING

BE HUMAN, BLOEMFONTEIN 04 October 2025



LOT 52 (F)

377 230012

MAJUBA EWE 377230012



Herd Book	SP	
Birth date	2023-08-08	
Age	2.2 years	
Inbreeding	9.86%	
Birth Stat.	2	
AFL	ILP	EPI
19.1m	-	100
Lambled	1	
Lambs (Sucking)	2 (0)	
Weaned	2	

D. LINDE



Ladismith, Western Cape
0814955111
dewaldlinde1999@gmail.com

344 200005 (2)
LONE TREE BLOKMAN

Parentage Sire Dam

DNA

Genomic

301 190037 (1)
TWEESEUNS EWE 301190037
AFL 36.5 | ILP 368 | EPI 110
Lambled 3 | Lambs 6 | Weaned 4

344 170019
LONE TREE RAM 344170019
TWEESEUNS RAM 301 130033
LONE TREE EWE 344150029
AFL 26.1 | ILP 338 | EPI 98
Lambled 2 | Lambs 3 | Weaned 2

344 160014
LONE TREE EWE 344160014
AFL 12.7 | ILP 355 | EPI 100
Lambled 8 | Lambs 17 | Weaned 17
TWEESEUNS RAM 301 130033
LONE TREE EWE 344140060
AFL 21.5 | ILP - | EPI 91
Lambled 1 | Lambs 2 | Weaned 2

301 150052
TWEESEUNS RAM 301 150052
TWEESEUNS RAM 301 130217
TWEESEUNS OOI 301 100002
AFL 25.1 | ILP 442 | EPI 128
Lambled 5 | Lambs 10 | Weaned 8

301 160180
TWEESEUNS EWE 301160180
AFL 34.8 | ILP 608 | EPI 90
Lambled 4 | Lambs 4 | Weaned 4
TWEESEUNS RAM 301 100140
TWEESEUNS OOI 301 110085
AFL 24.6 | ILP 486 | EPI 112
Lambled 4 | Lambs 8 | Weaned 7

Growth					Reproduction			
PreWn. Dir	PreWn. Mat.	Wn. Dir.	Wean Mat.	Post-Wn.	NLW	TWW	AFL	ILP
130	117	118	118	109	89	107	103	92
66%	51%	65%	46%	49%	42%	52%	35%	30%



EBV Analysis 2025-09-04

Logix Merit Index 119

Growth Index 131

Reproduction Index 107

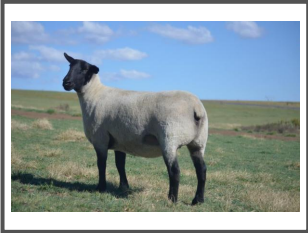
Birth Wt.	5kg
Pre-Wean	22.7kg (109)
Wean Wt.	33.2kg (103)
Post-Wean	-
Mature Wt.	-
ADG Ind.	-
FCR Ind.	-
Scrotum	-

SELLER REMARKS: Volsuster van lot 50. Het by ram 344 23 028 geloop, wat n direkte seun van die oorspronklike Mornish ram is. Dragtigheids status sal op die dag van die veiling bevestig word. Entings: Inmeva, Blu Vax, Glenvac 3 en Multivax P- Plus.

LOT 53 (F)

301 240208

TWEESEUNS OOI 301 240208



Herd Book	SP	
Birth date	2024-07-27	
Age	1.2 years	
Inbreeding	19.7%	
Birth Stat.	2	
AFL	ILP	EPI
-	-	-

TWEESEUNS

Barkley-East, Eastern Cape
0723132232
tjaart@barkly.co.za

301 170023 (1)
TWEESEUNS RAM 301170023

Parentage Sire Dam

DNA

Genomic

301 210094 (1)
TWEESEUNS OOI 301 210094
AFL 24 | ILP 363 | EPI 111
Lambled 2 | Lambs 4 | Weaned 4

301 150052
TWEESEUNS RAM 301 150052
TWEESEUNS RAM 301 130217
TWEESEUNS OOI 301 100002
AFL 25.1 | ILP 442 | EPI 128
Lambled 5 | Lambs 10 | Weaned 8

301 150172
TWEESEUNS OOI 301 150172
AFL 22.5 | ILP - | EPI -
Lambled 1 | Lambs 1 | Weaned 1
TWEESEUNS RAM 301 100112
TWEESEUNS OOI 301 130008
AFL 25.6 | ILP 430 | EPI 128
Lambled 6 | Lambs 9 | Weaned 9

301 160020
TWEESEUNS RAM 301160020
TWEESEUNS RAM 301 140197
TWEESEUNS OOI 301 110036
AFL 24.7 | ILP 367 | EPI 127
Lambled 6 | Lambs 8 | Weaned 7

301 170118
TWEESEUNS EWE 301170118
AFL 23.9 | ILP 489 | EPI 97
Lambled 4 | Lambs 5 | Weaned 5
TWEESEUNS RAM 301 150052
TWEESEUNS OOI 301 100065
AFL 61 | ILP 345 | EPI 103
Lambled 3 | Lambs 6 | Weaned 6

Growth					Reproduction			
PreWn. Dir	PreWn. Mat.	Wn. Dir.	Wean Mat.	Post-Wn.	NLW	TWW	AFL	ILP
109	108	127	111	121	99	118	97	87
66%	55%	65%	51%	48%	48%	56%	46%	38%



EBV Analysis 2025-09-04

Logix Merit Index 115

Growth Index 125

Reproduction Index 110

Birth Wt.	3kg
Pre-Wean	22.6kg (105)
Wean Wt.	46.8kg (140)
Post-Wean	-
Mature Wt.	-
ADG Ind.	-
FCR Ind.	-
Scrotum	-

SELLER REMARKS: Skou ooitjie was 1 van Beste groep van 3 ooie 9 maande oud. Ent: Multivax P+, Cydecton.

LOT 54 (F)

301 240207

TWEESEUNS OOI 301 240207



Herd Book	SP	
Birth date	2024-07-27	
Age	1.2 years	
Inbreeding	19.7%	
Birth Stat.	2	
AFL	ILP	EPI
-	-	-

TWEESEUNS

Barkley-East, Eastern Cape
0723132232
tjaart@barkly.co.za

301 170023 (1)
TWEESEUNS RAM 301170023

Parentage Sire Dam

DNA

Genomic

301 210094 (1)
TWEESEUNS OOI 301 210094
AFL 24 | ILP 363 | EPI 111
Lambled 2 | Lambs 4 | Weaned 4

301 150052
TWEESEUNS RAM 301 150052
TWEESEUNS RAM 301 130217
TWEESEUNS OOI 301 100002
AFL 25.1 | ILP 442 | EPI 128
Lambled 5 | Lambs 10 | Weaned 8

301 150172
TWEESEUNS OOI 301 150172
AFL 22.5 | ILP - | EPI -
Lambled 1 | Lambs 1 | Weaned 1
TWEESEUNS RAM 301 100112
TWEESEUNS OOI 301 130008
AFL 25.6 | ILP 430 | EPI 128
Lambled 6 | Lambs 9 | Weaned 9

301 160020
TWEESEUNS RAM 301160020
TWEESEUNS RAM 301 140197
TWEESEUNS OOI 301 110036
AFL 24.7 | ILP 367 | EPI 127
Lambled 6 | Lambs 8 | Weaned 7

301 170118
TWEESEUNS EWE 301170118
AFL 23.9 | ILP 489 | EPI 97
Lambled 4 | Lambs 5 | Weaned 5
TWEESEUNS RAM 301 150052
TWEESEUNS OOI 301 100065
AFL 61 | ILP 345 | EPI 103
Lambled 3 | Lambs 6 | Weaned 6

Growth					Reproduction			
PreWn. Dir	PreWn. Mat.	Wn. Dir.	Wean Mat.	Post-Wn.	NLW	TWW	AFL	ILP
103	110	110	112	112	99	108	97	87
66%	55%	65%	51%	48%	48%	56%	46%	38%



EBV Analysis 2025-09-04

Logix Merit Index 105

Growth Index 113

Reproduction Index 104

Birth Wt.	3kg
Pre-Wean	20.6kg (96)
Wean Wt.	31.7kg (95)
Post-Wean	-
Mature Wt.	-
ADG Ind.	-
FCR Ind.	-
Scrotum	-

SELLER REMARKS: Skou ooitjie was 1 van Beste groep van 3 ooie 9 maande oud. Ent: Multivax P+, Cydecton.

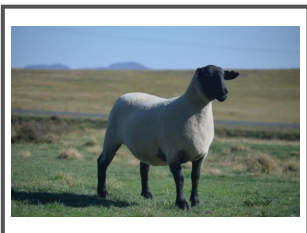


SUFFOLK NASIONALE VEILING

BE HUMAN, BLOEMFONTEIN 04 October 2025



LOT 55 (F)



TWEESEUNS
Barkley-East, Eastern Cape
0723132232
tjaart@barkly.co.za

301 240202

TWEESEUNS OOI 301 240202



Kuddeboek	SP	
Geb. dtm	2024-07-27	
Oud.	1.2 jaar	
Inteling	11.71%	
Geb. Status	2	
OEL	ILP	OPI
-	-	-

301 220073 (1)
TWEESEUNS RAM 301 220073

Ouerskap	Vaar	Moer
DNS		
Genomies		

301 150001 (1)
TWEESEUNS OOI 301 150001

OEL 24.1 | ILP 505 | OPI 112
Gelam 6 | Lammers 10 | Gespeen 10

301 210089
TWEESEUNS RAM 301 210089

301 200192
TWEESEUNS OOI 301 200192

301 100112
TWEESEUNS RAM 301 100112

301 130104
TWEESEUNS OOI 301 130104

TWEESEUNS RAM 301190044
TWEESEUNS EWE 301170140
OEL 23.9 | ILP 367 | OPI 110
Gelam 5 | Lammers 7 | Gespeen 7

GERHARD RAM 350170006
TWEESEUNS EWE 301160221
OEL 23.4 | ILP 359 | OPI 103
Gelam 3 | Lammers 8 | Gespeen 8

TWEESEUNS RAM 301 080040
TWEESEUNS OOI 301 070149
OEL 35 | ILP 340 | OPI 89
Gelam 2 | Lammers 2 | Gespeen 2

TWEESEUNS RAM 301 100112
TWEESEUNS OOI 301 080054
OEL 13.9 | ILP 1396 | OPI 89
Gelam 2 | Lammers 2 | Gespeen -

Groei					Reproduksie			
VSpn. Dir	VSpn. Mat	Spn. Dir	Spn. Mat	Na-Spn.	GLS	TWW	OEL	ILP
89	95	103	94	95	119	115	93	92
66%	43%	64%	37%	39%	35%	47%	32%	27%



Logix Meriete Indeks	104
Groei Indeks	95
Reproduksie Indeks	105

Geb. Gew.	3kg
Voorspeen	20.3kg (95)
Speen Gew.	31.3kg (94)
Na-Speen	-
Volw. Gew.	-
GDT Ind.	-
VOV Ind.	-
Skrotum	-

VERKOPER OPMERKINGS: Skou oitjie was 1 van Beste groep van 3 ooie 9 maande oud. Ent: Multivax P+, Cydecton.

LOT 56 (F)



GOOSEN SUFFOLK STOET
Hertzogville, Free State
0609767275
linnetteg@hertzogville.co.za

369 240034

GSS OOI 369 240034



Kuddeboek	SP	
Geb. dtm	2024-07-31	
Oud.	1.2 jaar	
Inteling	8.85%	
Geb. Status	2	
OEL	ILP	OPI
-	-	-

284 220144 (1)
ALMAU RAM 284 220144

Ouerskap	Vaar	Moer
DNS		
Genomies		

369 220043 (2)
GSS EWE 369220043

OEL 23.4 | ILP - | OPI 100
Gelam 1 | Lammers 2 | Gespeen 2

364 190003
VBS RAM 364190003

284 190009
ALMAU OOI 284190009

350 200025
GERSURE RAM 350200025

353 190270
DEBAK OOI 353190270

GERHARD RAM 350170006
TWEESEUNS EWE 301170222
OEL 12.3 | ILP 366 | OPI 96
Gelam 7 | Lammers 9 | Gespeen 5

ALMAU RAM 284180007
ALMAU OOI 284 150108
OEL 23.5 | ILP 362 | OPI 152
Gelam 7 | Lammers 16 | Gespeen 13

GERSURE RAM 350170013
ALMAU OOI 284 160055
OEL 24 | ILP 363 | OPI 135
Gelam 6 | Lammers 8 | Gespeen 8

Groei					Reproduksie			
VSpn. Dir	VSpn. Mat	Spn. Dir	Spn. Mat	Na-Spn.	GLS	TWW	OEL	ILP
85	106	102	106	115	89	94	105	95
62%	36%	61%	28%	55%	24%	40%	23%	16%

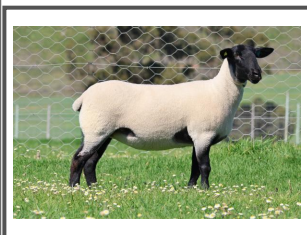


Logix Meriete Indeks	88
Groei Indeks	99
Reproduksie Indeks	96

Geb. Gew.	5kg
Voorspeen	22.4kg (126)
Speen Gew.	33.6kg (122)
Na-Speen	55.5kg (110)
Volw. Gew.	-
GDT Ind.	-
VOV Ind.	-
Skrotum	-

VERKOPER OPMERKINGS: Ent: Multivax P+, Glanvac 3.

LOT 57 (F)



VREDESIG FORBES
Darling, Western Cape
0825442336
wijforbes@gmail.com

375 240216

VREDESIG OOI 375 240216



Kuddeboek	SP	
Geb. dtm	2024-08-14	
Oud.	1.1 jaar	
Inteling	7.21%	
Geb. Status	1	
OEL	ILP	OPI
-	-	-

344 200005 (2)
LONE TREE BLOKMAN

Ouerskap	Vaar	Moer
DNS		
Genomies		

301 210282 (2)
TWEESEUNS OOI 301 210282

OEL 14.4 | ILP 334 | OPI 96
Gelam 3 | Lammers 3 | Gespeen 2

344 170019
LONE TREE RAM 344170019

344 160014
LONE TREE EWE 344160014

301 160020
TWEESEUNS RAM 301160020

301 170169
TWEESEUNS EWE 301170169

TWEESEUNS RAM 301 130033
LONE TREE EWE 344150029
OEL 26.1 | ILP 338 | OPI 98
Gelam 2 | Lammers 3 | Gespeen 2

TWEESEUNS RAM 301 130033
LONE TREE EWE 344140060
OEL 21.5 | ILP - | OPI 91
Gelam 1 | Lammers 2 | Gespeen 2

TWEESEUNS RAM 301 140197
TWEESEUNS OOI 301 110036
OEL 24.7 | ILP 367 | OPI 127
Gelam 6 | Lammers 8 | Gespeen 7

TWEESEUNS RAM 301 150052
TWEESEUNS OOI 301 110016
OEL 24.6 | ILP 461 | OPI 122
Gelam 5 | Lammers 8 | Gespeen 7

Groei					Reproduksie			
VSpn. Dir	VSpn. Mat	Spn. Dir	Spn. Mat	Na-Spn.	GLS	TWW	OEL	ILP
125	88	136	91	109	101	121	102	88
63%	44%	63%	41%	55%	39%	49%	35%	29%



Logix Meriete Indeks	121
Groei Indeks	126
Reproduksie Indeks	103

Geb. Gew.	4kg
Voorspeen	31.9kg (106)
Speen Gew.	35.1kg (125)
Na-Speen	47kg (91)
Volw. Gew.	-
GDT Ind.	-
VOV Ind.	-
Skrotum	-

VERKOPER OPMERKINGS: Goed gebalanseerde 'Blokman' dogter met goeie syfers. Entings; Inneva , Blu Vax, Glanvac 3 en Multivax P- Plus. Oop ooi, kom met twee strootjies saad van 301 20 292 'Yster'.



SUFFOLK NASIONALE VEILING

BE HUMAN, BLOEMFONTEIN 04 October 2025



LOT 58 (F)



VREDESIG FORBES

Darling, Western Cape
0825442336
wijjforbes@gmail.com

375 240127

VREDESIG OOI 375 240127



Herd Book	SP	
Birth date	2024-08-11	
Age	1.1 years	
Inbreeding	14.42%	
Birth Stat.	1	
AFL	ILP	EPI
-	-	-

301 220073 (1)
TWEESEUNS RAM 301 220073

Parentage Sire Dam
DNA
Genomic

363 210035 (1)
HATARI EKSTEENS OOI 363210035
AFL 30.3 | ILP 333 | EPI 84
Lambded 2 | Lambs 2 | Weaned 1

301 210089
TWEESEUNS RAM 301 210089
TWEESEUNS RAM 301190044
TWEESEUNS EWE 301170140
AFL 23.9 | ILP 367 | EPI 110
Lambded 5 | Lambs 7 | Weaned 7

301 200192
TWEESEUNS OOI 301 200192
AFL 23.8 | ILP - | EPI 91
Lambded 1 | Lambs 1 | Weaned 1
GERHARD RAM 350170006
TWEESEUNS EWE 301160221
AFL 23.4 | ILP 359 | EPI 103
Lambded 3 | Lambs 3 | Weaned 8

301 170098
TWEESEUNS RAM 301170098
TWEESEUNS RAM 301 150052
TWEESEUNS OOI 301 120134
AFL 48.6 | ILP 355 | EPI 101
Lambded 4 | Lambs 5 | Weaned 5

301 180143
TWEESEUNS EWE 301180143
AFL 24.6 | ILP 288 | EPI 134
Lambded 6 | Lambs 7 | Weaned 7
TWEESEUNS RAM 301 150059
TWEESEUNS EWE 301160151
AFL 23.4 | ILP - | EPI 88
Lambded 1 | Lambs 1 | Weaned 1

Growth					Reproduction			
PreWn. Dir	PreWn. Mat.	Wn. Dir.	Wean Mat.	Post-Wn.	NLW	TWW	AFL	ILP
91	104	108	104	93	103	108	105	92
61%	37%	62%	32%	48%	30%	43%	28%	23%



Logix Merit Index	103
Growth Index	104
Reproduction Index	104

SELLER REMARKS: Entings; Inmeva , Blu Vax, Glenvac 3 en Multivax P- Plus. Oop ooi, kom met twee strootjies saad van 344 20 005 'Blokman'.

Birth Wt.	3kg
Pre-Wean	29.1kg (97)
Wean Wt.	26.4kg (94)
Post-Wean	43.6kg (84)
Mature Wt.	-
ADG Ind.	-
FCR Ind.	-
Scrotum	-

LOT 59 (F)



VREDESIG FORBES

Darling, Western Cape
0825442336
wijjforbes@gmail.com

375 240163

VREDESIG OOI 375 240163



Herd Book	SP	
Birth date	2024-08-14	
Age	1.1 years	
Inbreeding	8.05%	
Birth Stat.	1	
AFL	ILP	EPI
-	-	-

344 200005 (2)
LONE TREE BLOKMAN

Parentage Sire Dam
DNA
Genomic

301 150225 (2)
TWEESEUNS OOI 301 150225
AFL 23.5 | ILP 423 | EPI 129
Lambded 7 | Lambs 13 | Weaned 12

344 170019
LONE TREE RAM 344170019
TWEESEUNS RAM 301 130033
LONE TREE EWE 344150029
AFL 26.1 | ILP 338 | EPI 98
Lambded 2 | Lambs 3 | Weaned 2

344 160014
LONE TREE EWE 344160014
AFL 12.7 | ILP 355 | EPI 100
Lambded 8 | Lambs 17 | Weaned 17
TWEESEUNS RAM 301 130033
LONE TREE EWE 344140060
AFL 21.5 | ILP - | EPI 91
Lambded 1 | Lambs 2 | Weaned 2

301 130206
TWEESEUNS RAM 301 130206
TOP CROP RAM 305 100005
TWEESEUNS OOI 301 100126
AFL 35.9 | ILP - | EPI -
Lambded 1 | Lambs 2 | Weaned -

301 100048
TWEESEUNS OOI 301 100048
AFL 24.7 | ILP 362 | EPI 161
Lambded 7 | Lambs 11 | Weaned 10
TWEESEUNS RAM 301 080012
TWEESEUNS OOI 301 050057
AFL 23.8 | ILP 359 | EPI 119
Lambded 6 | Lambs 9 | Weaned 3

Growth					Reproduction			
PreWn. Dir	PreWn. Mat.	Wn. Dir.	Wean Mat.	Post-Wn.	NLW	TWW	AFL	ILP
120	101	113	103	104	104	111	106	81
66%	47%	66%	44%	59%	41%	52%	36%	30%

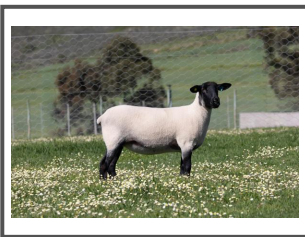


Logix Merit Index	113
Growth Index	116
Reproduction Index	100

SELLER REMARKS: 'Blokman' dogter met goeie syfers. Entings; Inmeva , Blu Vax, Glenvac 3 en Multivax P- Plus. Oop ooi, kom met twee strootjies saad van 301 20 292 'Yster'.

Birth Wt.	3kg
Pre-Wean	33.4kg (111)
Wean Wt.	22kg (78)
Post-Wean	48kg (93)
Mature Wt.	-
ADG Ind.	-
FCR Ind.	-
Scrotum	-

LOT 60 (F)



VREDESIG FORBES

Darling, Western Cape
0825442336
wijjforbes@gmail.com

375 240133

VREDESIG OOI 375 240133



Herd Book	SP	
Birth date	2024-08-11	
Age	1.1 years	
Inbreeding	9.74%	
Birth Stat.	2	
AFL	ILP	EPI
-	-	-

344 200005 (2)
LONE TREE BLOKMAN

Parentage Sire Dam
DNA
Genomic

301 220253 (2)
TWEESEUNS OOI 301 220253
AFL 24.2 | ILP - | EPI 97
Lambded 1 | Lambs 2 | Weaned 2

344 170019
LONE TREE RAM 344170019
TWEESEUNS RAM 301 130033
LONE TREE EWE 344150029
AFL 26.1 | ILP 338 | EPI 98
Lambded 2 | Lambs 3 | Weaned 2

344 160014
LONE TREE EWE 344160014
AFL 12.7 | ILP 355 | EPI 100
Lambded 8 | Lambs 17 | Weaned 17
TWEESEUNS RAM 301 130033
LONE TREE EWE 344140060
AFL 21.5 | ILP - | EPI 91
Lambded 1 | Lambs 2 | Weaned 2

301 210089
TWEESEUNS RAM 301 210089
TWEESEUNS RAM 301190044
TWEESEUNS EWE 301170140
AFL 23.9 | ILP 367 | EPI 110
Lambded 5 | Lambs 7 | Weaned 7

301 150029
TWEESEUNS OOI 301 150029
AFL 24 | ILP 630 | EPI 98
Lambded 5 | Lambs 7 | Weaned 7
TWEESEUNS RAM 301 120002
TWEESEUNS OOI 301 130208
AFL 24.4 | ILP - | EPI 84
Lambded 1 | Lambs 1 | Weaned 1

Growth					Reproduction			
PreWn. Dir	PreWn. Mat.	Wn. Dir.	Wean Mat.	Post-Wn.	NLW	TWW	AFL	ILP
124	84	129	87	107	107	119	103	93
63%	42%	63%	38%	54%	34%	47%	31%	23%



Logix Merit Index	121
Growth Index	119
Reproduction Index	103

SELLER REMARKS: 'Blokman' dogter met goeie syfers. Entings; Inmeva , Blu Vax, Glenvac 3 en Multivax P- Plus. Oop ooi, kom met twee strootjies saad van 301 20 292 'Yster'.

Birth Wt.	3kg
Pre-Wean	34.1kg (113)
Wean Wt.	32.2kg (115)
Post-Wean	55kg (106)
Mature Wt.	-
ADG Ind.	-
FCR Ind.	-
Scrotum	-



SUFFOLK NASIONALE VEILING

BE HUMAN, BLOEMFONTEIN 04 October 2025



LOT 61 (F)



284 240025

ALMAU EWE 284240025

Kuddeboek	SP	
Geb. dtm	2024-07-17	
Oud.	1.2 jaar	
Inteling	13.04%	
Geb. Status	2	
OEL	ILP	OPI
-	-	-

284 210073 (2)
ALMAU RAM 284210073

Ouerskap Vaar Moer

DNS
Genomies

284 220137 (2)
ALMAU OOI 284 220137
OEL 24.5 | ILP 363 | OPI 106
Gelum 2 | Lammers 4 | Gespeen 1

350 170087
GERHARD RAM 350170087
TWEESEUNS RAM 301 130206
TWEESEUNS OOI 301 140138
OEL 25.8 | ILP 355 | OPI 88
Gelum 4 | Lammers 5 | Gespeen 5

284 150103
ALMAU OOI 284 150103
OEL 24 | ILP 362 | OPI 252
Gelum 9 | Lammers 24 | Gespeen 20
CARMAR RAM 336 120004
TWEESEUNS OOI 301 120267
OEL 22.4 | ILP 370 | OPI 120
Gelum 5 | Lammers 7 | Gespeen 7

284 170020
ALMAU RAM 284 150006
ALMAU OOI 284 130060
OEL 24.3 | ILP 355 | OPI 146
Gelum 7 | Lammers 14 | Gespeen 8

284 200074
ALMAU OOI 284200074
OEL 23.5 | ILP 374 | OPI 116
Gelum 3 | Lammers 6 | Gespeen 5
GERHARD RAM 350170087
ALMAU EWE 284180033
OEL 23.7 | ILP 374 | OPI 89
Gelum 2 | Lammers 3 | Gespeen 3

Groei					Reproduksie			
VSpn. Dir	VSpn. Mat	Spn. Dir.	Spn. Mat.	Na-Spn.	GLS	TWW	OEL	ILP
107	92	111	94	129	110	113	109	99
62%	38%	62%	32%	58%	29%	43%	28%	22%



EBV Analise 2025-09-04

Logix Meriete Indeks	109
Groei Indeks	105
Reproduksie Indeks	107

Geb. Gew.	4kg
Voorspeen	19.1kg (95)
Speen Gew.	36.1kg (98)
Na-Speen	57.5kg (97)
Volw. Gew.	-
GDT Ind.	-
VOV Ind.	-
Skrotum	-

VERKOPER OPMERKINGS: Uitstekende groeier. Dogter van 284 21-073 (Vrugbaarste ram in Almau se geskiedenis). Ent: Multivax P+, Ondersteport Pasteurella, Bloutong(2024) Ensiotiese Aborsie.

LOT 62 (F)



284 240035

ALMAU EWE 284240035

Kuddeboek	SP	
Geb. dtm	2024-07-18	
Oud.	1.2 jaar	
Inteling	8.62%	
Geb. Status	2	
OEL	ILP	OPI
-	-	-

284 220140 (2)
ALMAU RAM 284 220140

Ouerskap Vaar Moer

DNS
Genomies

284 190043 (3)
ALMAU OOI 284190043
OEL 23.8 | ILP 367 | OPI 107
Gelum 4 | Lammers 9 | Gespeen 6

284 170020
ALMAU RAM 284 170020
ALMAU OOI 284 130060
OEL 24.3 | ILP 355 | OPI 146
Gelum 7 | Lammers 14 | Gespeen 8

284 190046
ALMAU OOI 284190046
OEL 23.6 | ILP 370 | OPI 118
Gelum 4 | Lammers 8 | Gespeen 7
ALMAU EWE 284170128
OEL 22.8 | ILP - | OPI 100
Gelum 1 | Lammers 2 | Gespeen 2

350 170087
GERHARD RAM 350170087
TWEESEUNS RAM 301 130206
TWEESEUNS OOI 301 140138
OEL 25.8 | ILP 355 | OPI 88
Gelum 4 | Lammers 5 | Gespeen 5

284 150127
ALMAU OOI 284 150127
OEL 23.3 | ILP 365 | OPI 189
Gelum 8 | Lammers 16 | Gespeen 16
ALMAU RAM 284 130054
ALMAU OOI 284 120114
OEL 19.2 | ILP 363 | OPI 110
Gelum 6 | Lammers 10 | Gespeen 8

Groei					Reproduksie			
VSpn. Dir	VSpn. Mat	Spn. Dir.	Spn. Mat.	Na-Spn.	GLS	TWW	OEL	ILP
109	90	108	92	110	101	104	112	110
61%	40%	60%	34%	55%	31%	43%	27%	22%



EBV Analise 2025-09-04

Logix Meriete Indeks	107
Groei Indeks	103
Reproduksie Indeks	104

Geb. Gew.	3.8kg
Voorspeen	19.4kg (97)
Speen Gew.	36kg (97)
Na-Speen	58kg (97)
Volw. Gew.	-
GDT Ind.	-
VOV Ind.	-
Skrotum	-

VERKOPER OPMERKINGS: Geteel uit 'n baie vrugbare ooi (4 keer gelam, 10 lammers gebore). Ent: Multivax P+, Ondersteport Pasteurella, Bloutong(2024) Ensiotiese Aborsie.

LOT 63 (F)



284 240032

ALMAU EWE 284240032

Kuddeboek	SP	
Geb. dtm	2024-07-18	
Oud.	1.2 jaar	
Inteling	14.51%	
Geb. Status	2	
OEL	ILP	OPI
-	-	-

284 210073 (2)
ALMAU RAM 284210073

Ouerskap Vaar Moer

DNS
Genomies

284 220022 (3)
ALMAU OOI 284 220022
OEL 24.7 | ILP 363 | OPI 108
Gelum 2 | Lammers 4 | Gespeen 2

350 170087
GERHARD RAM 350170087
TWEESEUNS RAM 301 130206
TWEESEUNS OOI 301 140138
OEL 25.8 | ILP 355 | OPI 88
Gelum 4 | Lammers 5 | Gespeen 5

284 150103
ALMAU OOI 284 150103
OEL 24 | ILP 362 | OPI 252
Gelum 9 | Lammers 24 | Gespeen 20
CARMAR RAM 336 120004
TWEESEUNS OOI 301 120267
OEL 22.4 | ILP 370 | OPI 120
Gelum 5 | Lammers 7 | Gespeen 7

284 190042
ALMAU RAM 284190042
GERHARD RAM 350170087
ALMAU OOI 284 150127
OEL 23.3 | ILP 365 | OPI 189
Gelum 8 | Lammers 16 | Gespeen 16

284 200005
ALMAU EWE 284200005
OEL 23.6 | ILP - | OPI 92
Gelum 1 | Lammers 3 | Gespeen 2
ALMAU RAM 284180050
ALMAU OOI 284 150108
OEL 23.5 | ILP 362 | OPI 152
Gelum 7 | Lammers 16 | Gespeen 13

Groei					Reproduksie			
VSpn. Dir	VSpn. Mat	Spn. Dir.	Spn. Mat.	Na-Spn.	GLS	TWW	OEL	ILP
97	87	98	87	107	108	102	110	113
63%	39%	63%	33%	59%	29%	44%	29%	22%



EBV Analise 2025-09-04

Logix Meriete Indeks	101
Groei Indeks	91
Reproduksie Indeks	104

Geb. Gew.	4.3kg
Voorspeen	19.6kg (98)
Speen Gew.	34.1kg (92)
Na-Speen	56.9kg (96)
Volw. Gew.	-
GDT Ind.	-
VOV Ind.	-
Skrotum	-

VERKOPER OPMERKINGS: Dogter van 284 21-073 (Vrugbaarste ram in Almau se geskiedenis). Ent: Multivax P+, Ondersteport Pasteurella, Bloutong(2024) Ensiotiese Aborsie.



SUFFOLK NASIONALE VEILING

BE HUMAN, BLOEMFONTEIN 04 October 2025



LOT 64 (F)



OTTERKUIL BOERDERY



Paarl, Western Cape
0832702134
albertkotze@otterkuil.co.za



284 240073

ALMAU OOI 284240073

Herd Book	SP	
Birth date	2024-08-01	
Age	1.2 years	
Inbreeding	15.74%	
Birth Stat.	2	
AFL	ILP	EPI
-	-	-

284 190042 (3)
ALMAU RAM 284190042

Parentage Sire Dam

DNA ✓

Genomic

284 220098 (2)
ALMAU OOI 284 220098

AFL 25.1 | ILP 344 | EPI 109
Lambled 2 | Lams 4 | Weaned 2

350 170087
GERHARD RAM 350170087

TWEESEUNS RAM 301 130206
TWEESEUNS OOI 301 140138
AFL 25.8 | ILP 355 | EPI 88
Lambled 4 | Lams 5 | Weaned 5

284 150127
ALMAU OOI 284 150127

AFL 23.3 | ILP 365 | EPI 189
Lambled 8 | Lams 16 | Weaned 16

301 190130
TWEESEUNS RAM 301190130

TWEESEUNS EWE 301170235
AFL 23.7 | ILP 460 | EPI 100
Lambled 5 | Lams 7 | Weaned 5

284 190057
ALMAU OOI 284190057

AFL 23.8 | ILP 350 | EPI 90
Lambled 2 | Lams 4 | Weaned 3

Growth					Reproduction			
PreWn. Dir	PreWn. Mat.	Wn. Dir.	Wean Mat.	Post-Wn.	NLW	TWW	AFL	ILP
110	82	112	83	99	90	94	120	112
62%	44%	61%	38%	57%	33%	46%	32%	27%



EBV Analysis 2025-09-04

Logix Merit Index 101

Growth Index 101

Reproduction Index 93

SELLER REMARKS: Ent: Multivax P+, Onderstepoort Pasteurella, Bloutong(2024) Ensietiese Absorsie.

Birth Wt.	3.5kg
Pre-Wean	16.4kg (82)
Wean Wt.	33.6kg (91)
Post-Wean	55.8kg (94)
Mature Wt.	-
ADG Ind.	-
FCR Ind.	-
Scrotum	-

LOT 65 (F)



GERT MALHERBE BRDY

Hertzogville, Free State
0828079216
gert@graslaagte.co.za



350 240245

GERSURE EWE 350240245

Herd Book	SP	
Birth date	2024-10-12	
Age	12 months	
Inbreeding	10.68%	
Birth Stat.	1	
AFL	ILP	EPI
-	-	-

284 220144 (1)
ALMAU RAM 284 220144

Parentage Sire Dam

DNA

Genomic

350 230175 (3)
GERSURE EWE 350230175

AFL 14.6 | ILP - | EPI 100
Lambled 1 | Lams 1 | Weaned 1

364 190003
VBS RAM 364190003

GERHARD RAM 350170006
TWEESEUNS EWE 301170222
AFL 12.3 | ILP 366 | EPI 96
Lambled 7 | Lams 9 | Weaned 5

284 190009
ALMAU OOI 284190009

AFL 24.9 | ILP 356 | EPI 98
Lambled 4 | Lams 5 | Weaned 4

301 210260
TWEESEUNS RAM 301 210260

TWEESEUNS EWE 301160029
AFL 23.6 | ILP 545 | EPI 110
Lambled 5 | Lams 8 | Weaned 8

301 170159
TWEESEUNS EWE 301170159

AFL 23.6 | ILP 366 | EPI 130
Lambled 5 | Lams 9 | Weaned 9

Growth					Reproduction			
PreWn. Dir	PreWn. Mat.	Wn. Dir.	Wean Mat.	Post-Wn.	NLW	TWW	AFL	ILP
89	110	107	111	109	97	104	100	82
62%	35%	61%	28%	50%	27%	40%	25%	19%



EBV Analysis 2025-09-04

Logix Merit Index 96

Growth Index 106

Reproduction Index 99

SELLER REMARKS:

Birth Wt.	4.2kg
Pre-Wean	18.8kg (102)
Wean Wt.	32.2kg (111)
Post-Wean	49.5kg (107)
Mature Wt.	-
ADG Ind.	-
FCR Ind.	-
Scrotum	-

LOT 66 (F)



CHRISRCROSS SUFFOLKS

Middelburg, Eastern Cape
0845134923
chrisna6666@gmail.com



343 240329

CHRISRCROSS OOI 343 240329

Herd Book	SP	
Birth date	2024-10-16	
Age	12 months	
Inbreeding	17.37%	
Birth Stat.	1	
AFL	ILP	EPI
-	-	-

343 220016 (1)
CHRISRCROSS RAM 343 220016

Parentage Sire Dam

DNA

Genomic

343 230028 (2)
CHRISRCROSS OOI 343 230028

AFL 19 | ILP - | EPI 104
Lambled 1 | Lams 1 | Weaned 1

301 170023
TWEESEUNS RAM 301170023

TWEESEUNS OOI 301 150172
AFL 22.5 | ILP - | EPI -
Lambled 1 | Lams 1 | Weaned 1

343 170068
CHRISRCROSS OOI 343 170068

AFL 24.3 | ILP 357 | EPI 105
Lambled 5 | Lams 7 | Weaned 4

343 190050
CHRISRCROSS RAM 343190050

CHRISRCROSS OOI 343 120003
AFL - | ILP - | EPI -
Lambled 6 | Lams 6 | Weaned -

343 180016
CHRISRCROSS EWE 343180016

AFL 24.3 | ILP 295 | EPI 157
Lambled 6 | Lams 9 | Weaned 8

Growth					Reproduction			
PreWn. Dir	PreWn. Mat.	Wn. Dir.	Wean Mat.	Post-Wn.	NLW	TWW	AFL	ILP
91	93	98	93	95	88	87	95	94
61%	38%	60%	33%	44%	30%	43%	30%	25%



EBV Analysis 2025-09-04

Logix Merit Index 84

Growth Index 92

Reproduction Index 83

SELLER REMARKS: Ent: Bloutong A,B,C / Multivax - P+

Birth Wt.	3kg
Pre-Wean	34.4kg (164)
Wean Wt.	58.9kg (143)
Post-Wean	-
Mature Wt.	-
ADG Ind.	-
FCR Ind.	-
Scrotum	-



SUFFOLK NASIONALE VEILING

BE HUMAN, BLOEMFONTEIN 04 October 2025



LOT 67 (F)

343 240084

CHRISSCROSS OOI 343 240084



Kuddeboek	SP	
Geb. dtm	2024-07-22	
Oud.	1.2 jaar	
Inteling	20.72%	
Geb. Status	1	
OEL	ILP	OPI
-	-	-

CHRISSCROSS SUFFOLKS

Middelburg, Eastern Cape
0845134923
chrisna6666@gmail.com

343 210023 (1)
CHRISSCROSS RAM 343210023

Ouerskap Vaar Moer
DNS
Genomies

343 220116 (2)
CHRISSCROSS OOI 343 220116

OEL 14 | ILP 299 | OPI 127
Gelam 3 | Lammers 4 | Gespeen 4

301 150130
TWEESEUNS RAM 301 150130
TWEESEUNS RAM 301 120001
TWEESEUNS OOI 301 100008
OEL 25 | ILP 364 | OPI 118
Gelam 5 | Lammers 8 | Gespeen 7

343 150124
CHRISSCROSS EWE 343150124
OEL - | ILP - | OPI 95
Gelam 7 | Lammers 8 | Gespeen 4
TWEESEUNS RAM 301 100174
CHRISSCROSS EWE 343140044
OEL 13.2 | ILP 622 | OPI 88
Gelam 5 | Lammers 6 | Gespeen 1

301 170023
TWEESEUNS RAM 301170023
TWEESEUNS RAM 301 150052
TWEESEUNS OOI 301 150172
OEL 22.5 | ILP - | OPI -
Gelam 1 | Lammers 1 | Gespeen 1

343 170108
CHRISSCROSS OOI 343 170108
OEL 24.5 | ILP 302 | OPI 118
Gelam 6 | Lammers 10 | Gespeen 9
TWEESEUNS RAM 301 150130
CHRISSCROSS EWE 343150046
OEL - | ILP - | OPI -
Gelam 7 | Lammers 8 | Gespeen 4

Groei					Reproduksie			
VSpn. Dir	VSpn. Mat	Spn. Dir.	Spn. Mat.	Na-Spn.	GLS	TWW	OEL	ILP
95	90	101	90	114	104	100	91	105
65%	45%	64%	39%	60%	33%	47%	34%	29%



Logix Meriete Indeks	94
Groei Indeks	93
Reproduksie Indeks	97

VERKOPER OPMERKINGS: Ent: Bloutong
A,B,C / Multivax - P+

Geb. Gew.	3kg
Voorspeen	18.5kg (99)
Speen Gew.	33.4kg (103)
Na-Speen	41.6kg (99)
Volw. Gew.	-
GDT Ind.	-
VOV Ind.	-
Skrotum	-

LOT 68 (F)

343 240168

CHRISSCROSS OOI 343 240168



Kuddeboek	SP	
Geb. dtm	2024-08-05	
Oud.	1.2 jaar	
Inteling	16.58%	
Geb. Status	1	
OEL	ILP	OPI
-	-	-

CHRISSCROSS SUFFOLKS

Middelburg, Eastern Cape
0845134923
chrisna6666@gmail.com

343 210039 (1)
CHRISSCROSS RAM 343 210039

Ouerskap Vaar Moer
DNS
Genomies

343 220212 (1)
CHRISSCROSS OOI 343 220212

OEL 12.6 | ILP 322 | OPI 115
Gelam 2 | Lammers 2 | Gespeen 2

301 150130
TWEESEUNS RAM 301 150130
TWEESEUNS OOI 301 100008
OEL 25 | ILP 364 | OPI 118
Gelam 5 | Lammers 8 | Gespeen 7

343 160115
CHRISSCROSS OOI 343 160115
OEL 37 | ILP 325 | OPI 83
Gelam 3 | Lammers 3 | Gespeen 1
TWEESEUNS RAM 301 100114
CHRISSCROSS EWE 343150001
OEL - | ILP - | OPI -
Gelam 6 | Lammers 5 | Gespeen 1

301 200054
TWEESEUNS RAM 301 200054
DERANDI RAM 346180024
TWEESEUNS OOI 301 130255
OEL 36.2 | ILP 450 | OPI 116
Gelam 5 | Lammers 7 | Gespeen 7

343 210095
CHRISSCROSS OOI 343 210095
OEL 13.3 | ILP 324 | OPI 90
Gelam 2 | Lammers 2 | Gespeen 2
TWEESEUNS RAM 301 150130
CHRISSCROSS OOI 343 160013
OEL - | ILP - | OPI -
Gelam 5 | Lammers 5 | Gespeen 3

Groei					Reproduksie			
VSpn. Dir	VSpn. Mat	Spn. Dir.	Spn. Mat.	Na-Spn.	GLS	TWW	OEL	ILP
118	88	123	91	120	98	109	99	113
63%	45%	63%	39%	60%	34%	47%	36%	26%



Logix Meriete Indeks	114
Groei Indeks	115
Reproduksie Indeks	106

VERKOPER OPMERKINGS: Ent: Bloutong
A,B,C / Multivax - P+

Geb. Gew.	3kg
Voorspeen	22.9kg (116)
Speen Gew.	35.8kg (119)
Na-Speen	44.5kg (107)
Volw. Gew.	-
GDT Ind.	-
VOV Ind.	-
Skrotum	-

LOT 69 (F)

343 240190

CHRISSCROSS OOI 343 240190



Kuddeboek	SP	
Geb. dtm	2024-08-10	
Oud.	1.1 jaar	
Inteling	23.51%	
Geb. Status	2	
OEL	ILP	OPI
-	-	-

CHRISSCROSS SUFFOLKS

Middelburg, Eastern Cape
0845134923
chrisna6666@gmail.com

343 210039 (1)
CHRISSCROSS RAM 343 210039

Ouerskap Vaar Moer
DNS
Genomies

343 190102 (1)
CHRISSCROSS EWE 343190102

OEL 21.8 | ILP 374 | OPI 103
Gelam 4 | Lammers 6 | Gespeen 6

301 150130
TWEESEUNS RAM 301 150130
TWEESEUNS OOI 301 100008
OEL 25 | ILP 364 | OPI 118
Gelam 5 | Lammers 8 | Gespeen 7

343 160115
CHRISSCROSS OOI 343 160115
OEL 37 | ILP 325 | OPI 83
Gelam 3 | Lammers 3 | Gespeen 1
TWEESEUNS RAM 301 100114
CHRISSCROSS EWE 343150001
OEL - | ILP - | OPI -
Gelam 6 | Lammers 5 | Gespeen 1

301 100114
TWEESEUNS RAM 301 100114
TWEESEUNS RAM 301 070028
TWEESEUNS OOI 301 060082
OEL 23.9 | ILP 367 | OPI 121
Gelam 3 | Lammers 6 | Gespeen 2

343 150065
CHRISSCROSS EWE 343150065
OEL 23.4 | ILP 453 | OPI 88
Gelam 5 | Lammers 7 | Gespeen 3
TWEESEUNS RAM 301 100114
CHRISSCROSS OOI 343110036
OEL 21.4 | ILP 362 | OPI -
Gelam 4 | Lammers 7 | Gespeen -

Groei					Reproduksie			
VSpn. Dir	VSpn. Mat	Spn. Dir.	Spn. Mat.	Na-Spn.	GLS	TWW	OEL	ILP
104	91	104	91	98	94	95	99	110
64%	48%	63%	42%	59%	33%	48%	38%	32%



Logix Meriete Indeks	99
Groei Indeks	99
Reproduksie Indeks	95

VERKOPER OPMERKINGS: Ent: Bloutong
A,B,C / Multivax - P+

Geb. Gew.	3kg
Voorspeen	19.7kg (100)
Speen Gew.	30.6kg (102)
Na-Speen	41.9kg (101)
Volw. Gew.	-
GDT Ind.	-
VOV Ind.	-
Skrotum	-



SUFFOLK NASIONALE VEILING

BE HUMAN, BLOEMFONTEIN 04 October 2025



LOT 70 (F)



CHRISRCROSS SUFFOLKS

Middelburg, Eastern Cape
0845134923
chrisna6666@gmail.com

343 240149

CHRISRCROSS OOI 343 240149



Herd Book	SP	
Birth date	2024-08-01	
Age	1.2 years	
Inbreeding	12.74%	
Birth Stat.	1	
AFL	ILP	EPI
-	-	-



343 210023 (1)
CHRISRCROSS RAM 343210023

Parentage Sire Dam
DNA
Genomic

343 220240 (1)
CHRISRCROSS OOI 343 220240

301 150130
TWESEUNS RAM 301 150130

TWESEUNS RAM 301 120001
TWESEUNS OOI 301 100008
AFL 25 | ILP 364 | EPI 118
Lambd 5 | Lams 8 | Weaned 7

343 150124
CHRISRCROSS EWE 343150124

TWESEUNS RAM 301 100174
CHRISRCROSS EWE 343140044
AFL 13.2 | ILP 622 | EPI 88
Lambd 5 | Lams 6 | Weaned 1

301 200054
TWESEUNS RAM 301 200054

DERANDI RAM 346180024
TWESEUNS OOI 301 130255
AFL 36.2 | ILP 450 | EPI 116
Lambd 5 | Lams 7 | Weaned 7

343 210121
CHRISRCROSS OOI 343 210121

GERSURE RAM 35018101
CHRISRCROSS EWE 343190115
AFL 22.1 | ILP 368 | EPI 97
Lambd 4 | Lams 5 | Weaned 5

Growth					Reproduction			
PreWn. Dir	PreWn. Mat.	Wn. Dir.	Wean Mat.	Post-Wn.	NLW	TWW	AFL	ILP
102	93	107	96	120	95	99	100	102
63%	41%	62%	35%	58%	29%	44%	31%	24%



EBV Analysis 2025-09-04

Logix Merit Index	97
Growth Index	102
Reproduction Index	97

Birth Wt.	3kg
Pre-Wean	21.5kg (115)
Wean Wt.	36.3kg (112)
Post-Wean	45.6kg (109)
Mature Wt.	-
ADG Ind.	-
FCR Ind.	-
Scrotum	-

SELLER REMARKS: Ent: Bloutong A,B,C /
Multivax - P+

LOT 71 (F)



CHRISRCROSS SUFFOLKS

Middelburg, Eastern Cape
0845134923
chrisna6666@gmail.com

343 240033

CHRISRCROSS OOI 343 240033



Herd Book	SP	
Birth date	2024-07-22	
Age	1.2 years	
Inbreeding	11.98%	
Birth Stat.	3	
AFL	ILP	EPI
-	-	-



343 210039 (1)
CHRISRCROSS RAM 343 210039

Parentage Sire Dam
DNA
Genomic

343 190094 (1)
CHRISRCROSS EWE 343190094

301 150130
TWESEUNS RAM 301 150130

TWESEUNS RAM 301 120001
TWESEUNS OOI 301 100008
AFL 25 | ILP 364 | EPI 118
Lambd 5 | Lams 8 | Weaned 7

343 160115
CHRISRCROSS OOI 343 160115

TWESEUNS RAM 301 100114
CHRISRCROSS EWE 343150001
AFL - | ILP - | EPI -
Lambd 6 | Lams 5 | Weaned 1

301 100174
TWESEUNS RAM 301 100174

TWESEUNS RAM 301 080012
TWESEUNS OOI 301 070164
AFL 22.6 | ILP 545 | EPI 84
Lambd 3 | Lams 3 | Weaned 2

343 130046
CHRISRCROSS EWE 343130046

TWESEUNS RAM 301 090007
ALMAU OOI 284 100035
AFL 24.5 | ILP 370 | EPI -
Lambd 4 | Lams 5 | Weaned -

Growth					Reproduction			
PreWn. Dir	PreWn. Mat.	Wn. Dir.	Wean Mat.	Post-Wn.	NLW	TWW	AFL	ILP
107	94	106	95	95	86	90	91	110
64%	48%	63%	42%	59%	33%	48%	38%	31%



EBV Analysis 2025-09-04

Logix Merit Index	96
Growth Index	103
Reproduction Index	92

Birth Wt.	2kg
Pre-Wean	19.8kg (106)
Wean Wt.	33.2kg (102)
Post-Wean	41.2kg (98)
Mature Wt.	-
ADG Ind.	-
FCR Ind.	-
Scrotum	-

SELLER REMARKS: Ent: Bloutong A,B,C /
Multivax - P+

LOT 72 (F)



CHRISRCROSS SUFFOLKS

Middelburg, Eastern Cape
0845134923
chrisna6666@gmail.com

343 240042

CHRISRCROSS OOI 343 240042



Herd Book	SP	
Birth date	2024-07-22	
Age	1.2 years	
Inbreeding	21.04%	
Birth Stat.	2	
AFL	ILP	EPI
-	-	-



343 210023 (1)
CHRISRCROSS RAM 343210023

Parentage Sire Dam
DNA
Genomic

343 200205 (1)
CHRISRCROSS OOI 343 200205

301 150130
TWESEUNS RAM 301 150130

TWESEUNS RAM 301 120001
TWESEUNS OOI 301 100008
AFL 25 | ILP 364 | EPI 118
Lambd 5 | Lams 8 | Weaned 7

343 150124
CHRISRCROSS EWE 343150124

TWESEUNS RAM 301 100174
CHRISRCROSS EWE 343140044
AFL 13.2 | ILP 622 | EPI 88
Lambd 5 | Lams 6 | Weaned 1

350 180101
GERSURE RAM 35018101

TWESEUNS RAM 301 140021
TWESEUNS OOI 301 140138
AFL 25.8 | ILP 355 | EPI 88
Lambd 4 | Lams 5 | Weaned 5

343 180055
CHRISRCROSS EWE 343180055

TWESEUNS RAM 301 150130
CHRISRCROSS EWE 343150095
AFL - | ILP - | EPI 101
Lambd 5 | Lams 4 | Weaned 3

Growth					Reproduction			
PreWn. Dir	PreWn. Mat.	Wn. Dir.	Wean Mat.	Post-Wn.	NLW	TWW	AFL	ILP
111	110	104	112	108	95	102	93	101
63%	44%	62%	37%	58%	29%	45%	30%	28%



EBV Analysis 2025-09-04

Logix Merit Index	107
Growth Index	113
Reproduction Index	106

Birth Wt.	2kg
Pre-Wean	20.8kg (111)
Wean Wt.	33.4kg (103)
Post-Wean	41.5kg (99)
Mature Wt.	-
ADG Ind.	-
FCR Ind.	-
Scrotum	-

SELLER REMARKS: Ent: Bloutong A,B,C /
Multivax - P+



SUFFOLK NASIONALE VEILING

BE HUMAN, BLOEMFONTEIN 04 October 2025



LOT 73 (F)



CHRISSCROSS SUFFOLKS

Middelburg, Eastern Cape
0845134923
chrisna6666@gmail.com

343 240205

CHRISSCROSS OOI 343 240205



Kuddeboek	SP	
Geb. dtm	2024-08-10	
Oud.	1.1 jaar	
Inteling	23.42%	
Geb. Status	1	
OEL	ILP	OPI
-	-	-

343 210023 (1)
CHRISSCROSS RAM 343210023

Ouerskap	Vaar	Moer
DNS		
Genomies		

343 220190 (1)
CHRISSCROSS OOI 343 220190

OEL 24 | ILP - | OPI 97
Gelum 1 | Lammers 1 | Gespeen 1

301 150130
TWEESEUNS RAM 301 150130

343 150124
CHRISSCROSS EWE 343150124
OEL - | ILP - | OPI 95
Gelum 7 | Lammers 8 | Gespeen 4

343 190008
CHRISSCROSS RAM 343190008

343 150046
CHRISSCROSS EWE 343150046
OEL - | ILP - | OPI -
Gelum 7 | Lammers 8 | Gespeen 4

Groei					Reproduksie			
VSpn. Dir	VSpn. Mat	Spn. Dir.	Spn. Mat.	Na-Spn.	GLS	TWW	OEL	ILP
106	93	105	94	105	96	98	87	99
63%	41%	62%	35%	58%	28%	44%	31%	26%



EBV Analise 2025-09-04

Logix Meriete Indeks	97
Groei Indeks	102
Reproduksie Indeks	93

Geb. Gew.	3kg
Voorspeen	20kg (101)
Speen Gew.	30.8kg (102)
Na-Speen	42.6kg (102)
Volw. Gew.	-
GDT Ind.	-
VOV Ind.	-
Skrotum	-

VERKOPER OPMERKINGS: Ent: Bloutong
A,B,C / Multivax - P+

LOT 74 (F)



CHRISSCROSS SUFFOLKS

Middelburg, Eastern Cape
0845134923
chrisna6666@gmail.com

343 240134

CHRISSCROSS OOI 343 240134



Kuddeboek	SP	
Geb. dtm	2024-08-01	
Oud.	1.2 jaar	
Inteling	12.63%	
Geb. Status	2	
OEL	ILP	OPI
-	-	-

343 210023 (1)
CHRISSCROSS RAM 343210023

Ouerskap	Vaar	Moer
DNS		
Genomies		

343 200085 (2)
CHRISSCROSS OOI 343 200085

OEL 35.6 | ILP 376 | OPI 100
Gelum 2 | Lammers 4 | Gespeen 3

301 150130
TWEESEUNS RAM 301 150130

343 150124
CHRISSCROSS EWE 343150124
OEL - | ILP - | OPI 95
Gelum 7 | Lammers 8 | Gespeen 4

337 180050
OTTERVLEI RAM 337180050

343 170045
CHRISSCROSS OOI 343 170045
OEL 25.6 | ILP 354 | OPI 111
Gelum 6 | Lammers 9 | Gespeen 6

Groei					Reproduksie			
VSpn. Dir	VSpn. Mat	Spn. Dir.	Spn. Mat.	Na-Spn.	GLS	TWW	OEL	ILP
117	97	118	100	108	98	109	95	103
63%	44%	62%	38%	58%	28%	45%	31%	28%



EBV Analise 2025-09-04

Logix Meriete Indeks	113
Groei Indeks	116
Reproduksie Indeks	105

Geb. Gew.	3kg
Voorspeen	21.8kg (117)
Speen Gew.	37.4kg (115)
Na-Speen	41.4kg (99)
Volw. Gew.	-
GDT Ind.	-
VOV Ind.	-
Skrotum	-

VERKOPER OPMERKINGS: Ent: Bloutong
A,B,C / Multivax - P+

LOT 75 (F)



CHRISSCROSS SUFFOLKS

Middelburg, Eastern Cape
0845134923
chrisna6666@gmail.com

343 240154

CHRISSCROSS OOI 343 240154



Kuddeboek	SP	
Geb. dtm	2024-08-05	
Oud.	1.2 jaar	
Inteling	25.37%	
Geb. Status	2	
OEL	ILP	OPI
-	-	-

343 210023 (1)
CHRISSCROSS RAM 343210023

Ouerskap	Vaar	Moer
DNS		
Genomies		

343 190138 (1)
CHRISSCROSS EWE 343190138

OEL 35.1 | ILP 349 | OPI 104
Gelum 3 | Lammers 5 | Gespeen 5

301 150130
TWEESEUNS RAM 301 150130

343 150124
CHRISSCROSS EWE 343150124
OEL - | ILP - | OPI 95
Gelum 7 | Lammers 8 | Gespeen 4

301 150130
TWEESEUNS RAM 301 150130

343 160020
CHRISSCROSS OOI 343 160020
OEL 38.5 | ILP 340 | OPI 103
Gelum 4 | Lammers 7 | Gespeen 5

Groei					Reproduksie			
VSpn. Dir	VSpn. Mat	Spn. Dir.	Spn. Mat.	Na-Spn.	GLS	TWW	OEL	ILP
117	86	112	89	113	96	100	92	106
63%	44%	63%	39%	59%	30%	46%	33%	31%



EBV Analise 2025-09-04

Logix Meriete Indeks	104
Groei Indeks	107
Reproduksie Indeks	95

Geb. Gew.	3kg
Voorspeen	19.8kg (100)
Speen Gew.	29.6kg (98)
Na-Speen	40.9kg (98)
Volw. Gew.	-
GDT Ind.	-
VOV Ind.	-
Skrotum	-

VERKOPER OPMERKINGS: Ent: Bloutong
A,B,C / Multivax - P+



SUFFOLK NASIONALE VEILING

BE HUMAN, BLOEMFONTEIN 04 October 2025



LOT 76 (F)

377 240027

MAJUBA EWE 377240027



Herd Book	SP	
Birth date	2024-08-11	
Age	1.1 years	
Inbreeding	8.44%	
Birth Stat.	1	
AFL	ILP	EPI
-	-	-

D. LINDE

Ladismith, Western Cape
0814955111
dewaldlinde1999@gmail.com



377 220031 (3)
MAJUBA RAM 377220031

Parentage Sire Dam

DNA

Genomic

301 210236 (4)
TWEESEUNS OOI 301 210236
AFL 12.2 | ILP 365 | EPI 96
Lambd 3 | Lams 3 | Weaned 2

274 200116
CHARDELA RAM 274200116
CHARDELA RAM 274150048
CHARDELA OOI 274150049
AFL 33.8 | ILP 277 | EPI 106
Lambd 4 | Lams 9 | Weaned 5

301 190124
TWEESEUNS EWE 301190124
AFL 26 | ILP 525 | EPI 107
Lambd 3 | Lams 5 | Weaned 5

301 130033
TWEESEUNS RAM 301 130033
TWEESEUNS OOI 301 110007
AFL 24.6 | ILP 458 | EPI 117
Lambd 5 | Lams 7 | Weaned 6

301 170048
TWEESEUNS EWE 301170048
AFL 23.9 | ILP 460 | EPI 114
Lambd 5 | Lams 10 | Weaned 9

Growth					Reproduction			
PreWn. Dir	PreWn. Mat.	Wn. Dir.	Wean Mat.	Post-Wn.	NLW	TWW	AFL	ILP
103	99	94	98	98	112	106	92	103
61%	39%	60%	34%	45%	31%	43%	30%	26%



EBV Analysis 2025-09-04

Logix Merit Index 105

Growth Index 97

Reproduction Index 106

SELLER REMARKS: 'Maverick' dogter met baie kapasiteit! Het by ram 344 23 028 geloop, wat n direkte seun van die oorspronlike Mornish ram is. Dragtigheid status sal op die dag van die veiling bevestig word. Entings: Inmeva , Blu Vax, Glenvac 3 en Multiv

Birth Wt.	4.1kg
Pre-Wean	19.3kg (122)
Wean Wt.	30.1kg (116)
Post-Wean	55kg (108)
Mature Wt.	-
ADG Ind.	-
FCR Ind.	-
Scrotum	-

LOT 77 (F)

377 240036

MAJUBA EWE 377240036



Herd Book	SP	
Birth date	2024-08-12	
Age	1.1 years	
Inbreeding	14.04%	
Birth Stat.	2	
AFL	ILP	EPI
-	-	-

D. LINDE

Ladismith, Western Cape
0814955111
dewaldlinde1999@gmail.com



377 220031 (3)
MAJUBA RAM 377220031

Parentage Sire Dam

DNA

Genomic

301 210212 (1)
TWEESEUNS OOI 301 210212
AFL 13.6 | ILP 346 | EPI 126
Lambd 3 | Lams 5 | Weaned 5

274 200116
CHARDELA RAM 274200116
CHARDELA OOI 274150049
AFL 33.8 | ILP 277 | EPI 106
Lambd 4 | Lams 9 | Weaned 5

301 190124
TWEESEUNS EWE 301190124
AFL 26 | ILP 525 | EPI 107
Lambd 3 | Lams 5 | Weaned 5

301 160020
TWEESEUNS RAM 301160020
TWEESEUNS OOI 301 110036
AFL 24.7 | ILP 367 | EPI 127
Lambd 6 | Lams 8 | Weaned 7

301 140169
TWEESEUNS OOI 301 140169
AFL 24.3 | ILP 600 | EPI 85
Lambd 4 | Lams 4 | Weaned 4

Growth					Reproduction			
PreWn. Dir	PreWn. Mat.	Wn. Dir.	Wean Mat.	Post-Wn.	NLW	TWW	AFL	ILP
90	105	86	105	113	116	106	93	107
61%	39%	60%	34%	43%	32%	44%	30%	25%



EBV Analysis 2025-09-04

Logix Merit Index 100

Growth Index 91

Reproduction Index 112

SELLER REMARKS: 'Maverick' dogter met goeie bouvorm! Het by ram 344 23 028 geloop, wat n direkte seun van die oorspronlike Mornish ram is. Dragtigheid status sal op die dag van die veiling bevestig word. Entings: Inmeva , Blu Vax, Glenvac 3 en Multivax

Birth Wt.	3.6kg
Pre-Wean	16.3kg (103)
Wean Wt.	26.4kg (102)
Post-Wean	67kg (131)
Mature Wt.	-
ADG Ind.	-
FCR Ind.	-
Scrotum	-

LOT 78 (F)

377 240023

MAJUBA EWE 377240023



Herd Book	SP	
Birth date	2024-05-11	
Age	1.4 years	
Inbreeding	4.21%	
Birth Stat.	2	
AFL	ILP	EPI
-	-	-

D. LINDE

Ladismith, Western Cape
0814955111
dewaldlinde1999@gmail.com



375 220016 (2)
MIDNIGHT RAM 375220016

Parentage Sire Dam

DNA

Genomic

301 170087 (1)
TWEESEUNS EWE 301170087
AFL 12.2 | ILP 701 | EPI 88
Lambd 4 | Lams 6 | Weaned 3

336 160043
CARMAR RAM 336160043
CARMAR OOI 336 130023
AFL 23.2 | ILP 366 | EPI 102
Lambd 5 | Lams 9 | Weaned 7

336 160062
CARMAR EWE 336160062
AFL 24.2 | ILP 406 | EPI 139
Lambd 7 | Lams 13 | Weaned 11

301 150052
TWEESEUNS RAM 301 150052
TWEESEUNS OOI 301 100002
AFL 25.1 | ILP 442 | EPI 128
Lambd 5 | Lams 10 | Weaned 8

301 150088
TWEESEUNS OOI 301 150088
AFL 22.9 | ILP 915 | EPI 89
Lambd 3 | Lams 4 | Weaned 4

Growth					Reproduction			
PreWn. Dir	PreWn. Mat.	Wn. Dir.	Wean Mat.	Post-Wn.	NLW	TWW	AFL	ILP
116	113	109	115	119	94	104	99	102
47%	39%	60%	37%	46%	35%	45%	31%	27%



EBV Analysis 2025-09-04

Logix Merit Index 111

Growth Index 118

Reproduction Index 109

SELLER REMARKS: 'Midnight' dogter met goeie bouvorm en syfers! Het by ram 344 23 028 geloop, wat n direkte seun van die oorspronlike Mornish ram is. Dragtigheid status sal op die dag van die veiling bevestig word. Entings: Inmeva , Blu Vax, Glenvac 3 e

Birth Wt.	3.9kg
Pre-Wean	-
Wean Wt.	18.9kg (100)
Post-Wean	59.6kg (100)
Mature Wt.	-
ADG Ind.	-
FCR Ind.	-
Scrotum	-



SUFFOLK NASIONALE VEILING

BE HUMAN, BLOEMFONTEIN 04 October 2025



LOT 79 (F)



377 240007

MAJUBA EWE 377240007

Kuddeboek	SP	
Geb. dtm	2024-05-09	
Oud.	1.4 jaar	
Inteling	6.1%	
Geb. Status	1	
OEL	ILP	OPI
-	-	-

301 210058 (2)
TWEESEUNS BLACK JACK

Ouerskap Vaar Moer

DNS

Genomies

377 220033 (2)
MAJUBA EWE 377220033

OEL 19.9 | ILP - | OPI 93
Gelam 1 | Lammers 1 | Gespeen 1

301 190044
TWEESEUNS RAM 301190044
TWEESEUNS RAM 301 130033
TWEESEUNS OOI 301 120060
OEL 24.1 | ILP 362 | OPI 131
Gelam 6 | Lammers 9 | Gespeen 9

301 130251
TWEESEUNS OOI 301 130251
OEL 36.2 | ILP 896 | OPI 98
Gelam 3 | Lammers 5 | Gespeen 5
TOP CROP RAM 305 100005
TWEESEUNS OOI 301 100137
OEL 36.1 | ILP 361 | OPI 100
Gelam 6 | Lammers 9 | Gespeen 4

274 200116
CHARDELA RAM 274200116
CHARDELA RAM 274150048
CHARDELA OOI 274150049
OEL 33.8 | ILP 277 | OPI 106
Gelam 4 | Lammers 9 | Gespeen 5

301 190289
TWEESEUNS EWE 301190289
OEL 36 | ILP - | OPI 97
Gelam 1 | Lammers 2 | Gespeen 2
TWEESEUNS RAM 301160020
TWEESEUNS EWE 301170315
OEL 24.3 | ILP 1427 | OPI 88
Gelam 2 | Lammers 3 | Gespeen 2

Groei					Reproduksie			
VSpn. Dir	VSpn. Mat	Spn. Dir.	Spn. Mat.	Na-Spn.	GLS	TWW	OEL	ILP
114	91	107	93	89	109	110	110	102
51%	40%	59%	36%	43%	34%	44%	32%	24%



Logix Meriete Indeks	115
Groei Indeks	105
Reproduksie Indeks	106

Geb. Gew.	3.5kg
Voorspeen	-
Speen Gew.	22.6kg (120)
Na-Speen	59.6kg (100)
Volw. Gew.	-
GDT Ind.	-
VOV Ind.	-
Skrotum	-

VERKOPER OPMERKINGS: Het by ram 344 23 028 geloop, wat n direkte seun van die oorspronlike Mornish ram is. Dragtigheid status sal op die dag van die veiling bevestig word. Entings: Inmeva , Blu Vax, Glenvac 3 en Multivax P- Plus.

LOT 80 (F)



377 240032

MAJUBA EWE 377240032

Kuddeboek	SP	
Geb. dtm	2024-08-12	
Oud.	1.1 jaar	
Inteling	7.7%	
Geb. Status	2	
OEL	ILP	OPI
-	-	-

377 220031 (3)
MAJUBA RAM 377220031

Ouerskap Vaar Moer

DNS

Genomies

301 200134 (2)
TWEESEUNS OOI 301 200134

OEL 22.5 | ILP 394 | OPI 104
Gelam 3 | Lammers 6 | Gespeen 4

274 200116
CHARDELA RAM 274200116
CHARDELA RAM 274150048
CHARDELA OOI 274150049
OEL 33.8 | ILP 277 | OPI 106
Gelam 4 | Lammers 9 | Gespeen 5

301 190124
TWEESEUNS EWE 301190124
OEL 26 | ILP 525 | OPI 107
Gelam 3 | Lammers 5 | Gespeen 5
TWEESEUNS RAM 301160020
TWEESEUNS EWE 301160211
OEL 23.3 | ILP 454 | OPI 120
Gelam 5 | Lammers 9 | Gespeen 9

350 170006
GERHARD RAM 350170006
TWEESEUNS RAM 301 130206
TWEESEUNS OOI 301 100137
OEL 36.1 | ILP 361 | OPI 100
Gelam 6 | Lammers 8 | Gespeen 4

301 170218
TWEESEUNS EWE 301170218
OEL - | ILP - | OPI 95
Gelam 4 | Lammers 4 | Gespeen 4
TWEESEUNS RAM 301 150052
TWEESEUNS OOI 301 130144
OEL 24.5 | ILP 361 | OPI 136
Gelam 7 | Lammers 9 | Gespeen 9

Groei					Reproduksie			
VSpn. Dir	VSpn. Mat	Spn. Dir.	Spn. Mat.	Na-Spn.	GLS	TWW	OEL	ILP
103	104	85	104	96	92	85	97	88
61%	37%	59%	32%	43%	29%	42%	25%	23%



Logix Meriete Indeks	87
Groei Indeks	94
Reproduksie Indeks	86

Geb. Gew.	3.8kg
Voorspeen	15.5kg (98)
Speen Gew.	22.6kg (87)
Na-Speen	47.3kg (93)
Volw. Gew.	-
GDT Ind.	-
VOV Ind.	-
Skrotum	-

VERKOPER OPMERKINGS: Het by ram 344 23 028 geloop, wat n direkte seun van die oorspronlike Mornish ram is. Dragtigheid status sal op die dag van die veiling bevestig word. Entings: Inmeva , Blu Vax, Glenvac 3 en Multivax P- Plus.

LOT 81 (F)



301 240112

TWEESEUNS OOI 301 240112

Kuddeboek	SP	
Geb. dtm	2024-07-25	
Oud.	1.2 jaar	
Inteling	7.53%	
Geb. Status	1	
OEL	ILP	OPI
-	-	-

301 200108 (1)
TWEESEUNS RAM 301 200108

Ouerskap Vaar Moer

DNS

Genomies

301 200053 (2)
TWEESEUNS OOI 301 200053

OEL 36.3 | ILP 355 | OPI 94
Gelam 2 | Lammers 2 | Gespeen 2

301 130033
TWEESEUNS RAM 301 130033
TWEESEUNS RAM 301 100140
TWEESEUNS OOI 301 110007
OEL 24.6 | ILP 458 | OPI 117
Gelam 5 | Lammers 7 | Gespeen 6

301 170081
TWEESEUNS EWE 301170081
OEL 25.3 | ILP 729 | OPI 87
Gelam 3 | Lammers 3 | Gespeen 2
TWEESEUNS RAM 301 150052
TWEESEUNS OOI 301 100120
OEL 35.1 | ILP 369 | OPI 122
Gelam 6 | Lammers 9 | Gespeen 7

346 180024
DERANDI RAM 346180024
ALMAU RAM 284 150085
ALMAU OOI 284 140011
OEL 18.7 | ILP 292 | OPI 88
Gelam 4 | Lammers 5 | Gespeen 4

301 130255
TWEESEUNS OOI 301 130255
OEL 36.2 | ILP 450 | OPI 116
Gelam 5 | Lammers 7 | Gespeen 7
TOP CROP RAM 305 100005
TWEESEUNS OOI 301 100103
OEL 36.2 | ILP 749 | OPI 83
Gelam 2 | Lammers 4 | Gespeen 1

Groei					Reproduksie			
VSpn. Dir	VSpn. Mat	Spn. Dir.	Spn. Mat.	Na-Spn.	GLS	TWW	OEL	ILP
112	104	122	105	107	94	110	101	100
64%	46%	63%	41%	47%	39%	49%	37%	30%



Logix Meriete Indeks	114
Groei Indeks	120
Reproduksie Indeks	107

Geb. Gew.	4kg
Voorspeen	21.5kg (100)
Speen Gew.	45.5kg (136)
Na-Speen	-
Volw. Gew.	-
GDT Ind.	-
VOV Ind.	-
Skrotum	-

VERKOPER OPMERKINGS: Was in my skou string. Ent: Multivax P+, Cydecton.

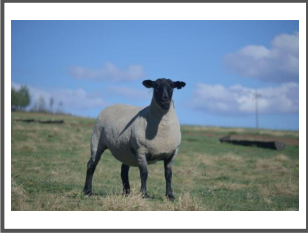


SUFFOLK NASIONALE VEILING

BE HUMAN, BLOEMFONTEIN 04 October 2025



LOT 82 (F)



TWEESEUNS
Barkley-East, Eastern Cape
0723132232
tjaart@barkly.co.za

301 240154

TWEESEUNS OOI 301 240154



Herd Book	SP	
Birth date	2024-07-26	
Age	1.2 years	
Inbreeding	14.26%	
Birth Stat.	2	
AFL	ILP	EPI
-	-	-

301 220073 (1)
TWEESEUNS RAM 301 220073

Parentage Sire Dam
DNA
Genomic

301 190280 (2)
TWEESEUNS EWE 301190280
AFL 36.5 | ILP 672 | EPI 106
Lambd 2 | Lams 3 | Weaned 3

301 210089
TWEESEUNS RAM 301 210089
TWEESEUNS EWE 301170140
AFL 23.9 | ILP 367 | EPI 110
Lambd 5 | Lams 7 | Weaned 7

301 200192
TWEESEUNS OOI 301 200192
AFL 23.8 | ILP - | EPI 91
Lambd 1 | Lams 1 | Weaned 1

301 160020
TWEESEUNS RAM 301160020
TWEESEUNS OOI 301 110036
AFL 24.7 | ILP 367 | EPI 127
Lambd 6 | Lams 8 | Weaned 7

301 170092
TWEESEUNS RAM 301 150052
TWEESEUNS EWE 301170092
AFL 12.5 | ILP 452 | EPI 119
Lambd 5 | Lams 9 | Weaned 6

Growth					Reproduction			
PreWn. Dir	PreWn. Mat.	Wn. Dir.	Wean Mat.	Post-Wn.	NLW	TWW	AFL	ILP
99	101	125	104	110	107	122	98	87
63%	41%	62%	35%	39%	33%	45%	31%	25%



EBV Analysis 2025-09-04

Logix Merit Index	113
Growth Index	117
Reproduction Index	110

Birth Wt.	3kg
Pre-Wean	22.2kg (104)
Wean Wt.	40.8kg (122)
Post-Wean	-
Mature Wt.	-
ADG Ind.	-
FCR Ind.	-
Scrotum	-

SELLER REMARKS: Was in my skou string.
Ent: Multivax P+, Cydecton.

LOT 83 (F)



TWEESEUNS
Barkley-East, Eastern Cape
0723132232
tjaart@barkly.co.za

301 240166

TWEESEUNS OOI 301 240166



Herd Book	SP	
Birth date	2024-07-26	
Age	1.2 years	
Inbreeding	12.99%	
Birth Stat.	2	
AFL	ILP	EPI
-	-	-

301 200108 (1)
TWEESEUNS RAM 301 200108

Parentage Sire Dam
DNA
Genomic

301 170237 (2)
TWEESEUNS EWE 301170237
AFL 24.9 | ILP 893 | EPI 92
Lambd 3 | Lams 4 | Weaned 3

301 130033
TWEESEUNS RAM 301 130033
TWEESEUNS OOI 301 110007
AFL 24.6 | ILP 458 | EPI 117
Lambd 5 | Lams 7 | Weaned 6

301 170081
TWEESEUNS EWE 301170081
AFL 25.3 | ILP 729 | EPI 87
Lambd 3 | Lams 3 | Weaned 2

301 140197
TWEESEUNS RAM 301 140197
TWEESEUNS OOI 301 090156
AFL 35.9 | ILP 371 | EPI 107
Lambd 3 | Lams 5 | Weaned 4

301 130037
TWEESEUNS RAM 301 100140
TWEESEUNS OOI 301 130037
AFL 25.5 | ILP 430 | EPI 128
Lambd 6 | Lams 10 | Weaned 9

Growth					Reproduction			
PreWn. Dir	PreWn. Mat.	Wn. Dir.	Wean Mat.	Post-Wn.	NLW	TWW	AFL	ILP
85	129	90	125	92	108	108	90	91
65%	48%	64%	43%	46%	41%	51%	38%	32%



EBV Analysis 2025-09-04

Logix Merit Index	103
Growth Index	103
Reproduction Index	114

Birth Wt.	3kg
Pre-Wean	20.9kg (97)
Wean Wt.	32kg (96)
Post-Wean	-
Mature Wt.	-
ADG Ind.	-
FCR Ind.	-
Scrotum	-

SELLER REMARKS: Was in my skou string.
Ent: Multivax P+, Cydecton.

LOT 84 (F)



TWEESEUNS
Barkley-East, Eastern Cape
0723132232
tjaart@barkly.co.za

301 240223

TWEESEUNS OOI 301 240223



Herd Book	SP	
Birth date	2024-07-27	
Age	1.2 years	
Inbreeding	16.58%	
Birth Stat.	3	
AFL	ILP	EPI
-	-	-

301 200108 (1)
TWEESEUNS RAM 301 200108

Parentage Sire Dam
DNA
Genomic

301 180005 (2)
TWEESEUNS EWE 301180005
AFL 24 | ILP 729 | EPI 109
Lambd 3 | Lams 6 | Weaned 6

301 130033
TWEESEUNS RAM 301 130033
TWEESEUNS OOI 301 110007
AFL 24.6 | ILP 458 | EPI 117
Lambd 5 | Lams 7 | Weaned 6

301 170081
TWEESEUNS EWE 301170081
AFL 25.3 | ILP 729 | EPI 87
Lambd 3 | Lams 3 | Weaned 2

301 150052
TWEESEUNS RAM 301 150052
TWEESEUNS OOI 301 100002
AFL 25.1 | ILP 442 | EPI 128
Lambd 5 | Lams 10 | Weaned 8

301 160021
TWEESEUNS RAM 301 140197
TWEESEUNS EWE 301160021
AFL 23.4 | ILP 1094 | EPI 99
Lambd 3 | Lams 6 | Weaned 6

Growth					Reproduction			
PreWn. Dir	PreWn. Mat.	Wn. Dir.	Wean Mat.	Post-Wn.	NLW	TWW	AFL	ILP
105	120	108	118	102	116	123	90	82
66%	49%	65%	45%	47%	42%	52%	40%	34%



EBV Analysis 2025-09-04

Logix Merit Index	118
Growth Index	117
Reproduction Index	117

Birth Wt.	3kg
Pre-Wean	22.5kg (105)
Wean Wt.	31.6kg (95)
Post-Wean	-
Mature Wt.	-
ADG Ind.	-
FCR Ind.	-
Scrotum	-

SELLER REMARKS: Was in my skou string.
Ent: Multivax P+, Cydecton.

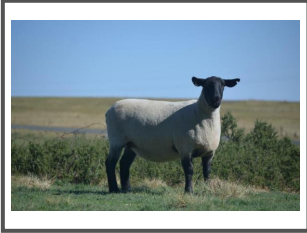


SUFFOLK NASIONALE VEILING

BE HUMAN, BLOEMFONTEIN 04 October 2025



LOT 85 (F)



TWEESEUNS
Barkley-East, Eastern Cape
0723132232
tjaart@barkly.co.za

301 240323

TWEESEUNS OOI 301 240323



Kuddeboek	SP	
Geb. dtm	2024-08-04	
Oud.	1.2 jaar	
Inteling	8.61%	
Geb. Status	1	
OEL	ILP	OPI
-	-	-

301 200108 (1)
TWEESEUNS RAM 301 200108

Ouerskap Vaar Moer

DNS

Genomies

301 190161 (2)
TWEESEUNS EWE 301190161

OEL 37.6 | ILP 686 | OPI 89
Gelum 2 | Lammers 2 | Gespeen 2

301 130033
TWEESEUNS RAM 301 130033

TWEESEUNS OOI 301 110007
OEL 24.6 | ILP 458 | OPI 117
Gelum 5 | Lammers 7 | Gespeen 6

301 170081
TWEESEUNS EWE 301170081

OEL 25.3 | ILP 729 | OPI 87
Gelum 3 | Lammers 3 | Gespeen 2

301 160020
TWEESEUNS RAM 301160020

TWEESEUNS OOI 301 110036
OEL 24.7 | ILP 367 | OPI 127
Gelum 6 | Lammers 8 | Gespeen 7

301 120130
TWEESEUNS OOI 301 120130

OEL 24.5 | ILP 600 | OPI 106
Gelum 4 | Lammers 6 | Gespeen 6

Groei					Reproduksie			
VSpn. Dir	VSpn. Mat	Spn. Dir.	Spn. Mat.	Na-Spn.	GLS	TWW	OEL	ILP
98	117	96	115	93	104	105	91	93
65%	48%	64%	43%	46%	41%	51%	39%	32%



EBV Analise 2025-09-04

Logix Meriete Indeks 105

Groei Indeks 105

Reproduksie Indeks 107

Geb. Gew.	4kg
Voorspeen	23.4kg (109)
Speen Gew.	30.6kg (92)
Na-Speen	-
Volw. Gew.	-
GDT Ind.	-
VOV Ind.	-
Skrotum	-

VERKOPER OPMERKINGS: Was in my skou string. Ent: Multivax P+, Cydecton.

LOT 86 (F)



TWEESEUNS
Barkley-East, Eastern Cape
0723132232
tjaart@barkly.co.za

301 240277

TWEESEUNS OOI 301 240277



Kuddeboek	SP	
Geb. dtm	2024-07-28	
Oud.	1.2 jaar	
Inteling	9.64%	
Geb. Status	3	
OEL	ILP	OPI
-	-	-

301 200108 (1)
TWEESEUNS RAM 301 200108

Ouerskap Vaar Moer

DNS

Genomies

301 210065 (2)
TWEESEUNS OOI 301 210065

OEL 35.9 | ILP - | OPI 98
Gelum 1 | Lammers 3 | Gespeen 3

301 130033
TWEESEUNS RAM 301 130033

TWEESEUNS OOI 301 110007
OEL 24.6 | ILP 458 | OPI 117
Gelum 5 | Lammers 7 | Gespeen 6

301 170081
TWEESEUNS EWE 301170081

OEL 25.3 | ILP 729 | OPI 87
Gelum 3 | Lammers 3 | Gespeen 2

301 160020
TWEESEUNS RAM 301160020

TWEESEUNS OOI 301 110036
OEL 24.7 | ILP 367 | OPI 127
Gelum 6 | Lammers 8 | Gespeen 7

301 160017
TWEESEUNS EWE 301160017

OEL 23.8 | ILP 546 | OPI 105
Gelum 5 | Lammers 7 | Gespeen 7

Groei					Reproduksie			
VSpn. Dir	VSpn. Mat	Spn. Dir.	Spn. Mat.	Na-Spn.	GLS	TWW	OEL	ILP
82	107	97	104	93	111	108	94	106
65%	48%	64%	43%	46%	40%	50%	39%	31%



EBV Analise 2025-09-04

Logix Meriete Indeks 101

Groei Indeks 94

Reproduksie Indeks 111

Geb. Gew.	3kg
Voorspeen	20.5kg (96)
Speen Gew.	31.9kg (95)
Na-Speen	-
Volw. Gew.	-
GDT Ind.	-
VOV Ind.	-
Skrotum	-

VERKOPER OPMERKINGS: Was in my skou string. Ent: Multivax P+, Cydecton.

LOT 87 (F)



TWEESEUNS
Barkley-East, Eastern Cape
0723132232
tjaart@barkly.co.za

301 240129

TWEESEUNS OOI 301 240129



Kuddeboek	SP	
Geb. dtm	2024-07-25	
Oud.	1.2 jaar	
Inteling	18.69%	
Geb. Status	2	
OEL	ILP	OPI
-	-	-

301 220073 (1)
TWEESEUNS RAM 301 220073

Ouerskap Vaar Moer

DNS

Genomies

301 160183 (2)
TWEESEUNS EWE 301160183

OEL 34.8 | ILP 608 | OPI 100
Gelum 4 | Lammers 6 | Gespeen 6

301 210089
TWEESEUNS RAM 301 210089

TWEESEUNS EWE 301170140
OEL 23.9 | ILP 367 | OPI 110
Gelum 5 | Lammers 7 | Gespeen 7

301 200192
TWEESEUNS OOI 301 200192

OEL 23.8 | ILP - | OPI 91
Gelum 1 | Lammers 1 | Gespeen 1

301 130217
TWEESEUNS RAM 301 130217

TWEESEUNS OOI 301 110146
OEL 24.6 | ILP 680 | OPI 83
Gelum 3 | Lammers 3 | Gespeen 1

301 140181
TWEESEUNS OOI 301 140181

OEL 24.3 | ILP 431 | OPI 120
Gelum 7 | Lammers 12 | Gespeen 12

Groei					Reproduksie			
VSpn. Dir	VSpn. Mat	Spn. Dir.	Spn. Mat.	Na-Spn.	GLS	TWW	OEL	ILP
90	106	104	106	94	112	114	104	76
65%	42%	64%	36%	36%	33%	46%	30%	24%



EBV Analise 2025-09-04

Logix Meriete Indeks 104

Groei Indeks 102

Reproduksie Indeks 104

Geb. Gew.	3kg
Voorspeen	21.5kg (100)
Speen Gew.	30.8kg (92)
Na-Speen	-
Volw. Gew.	-
GDT Ind.	-
VOV Ind.	-
Skrotum	-

VERKOPER OPMERKINGS: Dragtig met 2ling. Ent: Multivax P+, Cydecton.



SUFFOLK NASIONALE VEILING

BE HUMAN, BLOEMFONTEIN 04 October 2025



LOT 88 (F)



TWEESEUNS

Barkley-East, Eastern Cape
0723132232
tjaart@barkly.co.za



301 240226

TWEESEUNS OOI 301 240226

Herd Book	SP	
Birth date	2024-07-27	
Age	1.2 years	
Inbreeding	22.57%	
Birth Stat.	4	
AFL	ILP	EPI
-	-	-

301 220073 (1)
TWEESEUNS RAM 301 220073

Parentage Sire Dam	
DNA	
Genomic	

301 220092 (2)
TWEESEUNS OOI 301 220092
AFL 24 | ILP - | EPI 108
Lambd 1 | Lambs 4 | Weaned 4

301 210089
TWEESEUNS RAM 301 210089
TWEESEUNS RAM 301190044
TWEESEUNS EWE 301170140
AFL 23.9 | ILP 367 | EPI 110
Lambd 5 | Lambs 7 | Weaned 7

301 200192
TWEESEUNS OOI 301 200192
AFL 23.8 | ILP - | EPI 91
Lambd 1 | Lambs 1 | Weaned 1
GERHARD RAM 350170006
TWEESEUNS EWE 301160221
AFL 23.4 | ILP 359 | EPI 103
Lambd 3 | Lambs 8 | Weaned 8

301 210089
TWEESEUNS RAM 301 210089
TWEESEUNS RAM 301190044
TWEESEUNS EWE 301170140
AFL 23.9 | ILP 367 | EPI 110
Lambd 5 | Lambs 7 | Weaned 7

301 160044
TWEESEUNS EWE 301160044
AFL 23.5 | ILP 544 | EPI 118
Lambd 5 | Lambs 8 | Weaned 8
TWEESEUNS RAM 301 10002
TWEESEUNS OOI 301 120126
AFL 36.6 | ILP 476 | EPI 111
Lambd 4 | Lambs 7 | Weaned 7

Growth					Reproduction			
PreWn. Dir	PreWn. Mat.	Wn. Dir.	Wean Mat.	Post-Wn.	NLW	TWW	AFL	ILP
85	100	123	103	104	130	139	108	91
64%	40%	63%	33%	38%	29%	44%	28%	20%



Logix Merit Index	123
Growth Index	110
Reproduction Index	127

SELLER REMARKS: Dragtig met 2ling. Ent: Multivax P+, Cydecton.

Birth Wt.	3kg
Pre-Wean	22.2kg (104)
Wean Wt.	34.2kg (102)
Post-Wean	-
Mature Wt.	-
ADG Ind.	-
FCR Ind.	-
Scrotum	-

EXPLANATION OF CATALOGUE ABBREVIATIONS

VERDUIDELIKING VAN KATALOGUS AFKORTINGS

Lot Number	LOT	LOT	Lot Nommer
Animal sex: M - Male, F - Female	M / F	M / V	Dier geslag: M - Manlik, V - Vroulik
Estimated breeding value	EBV	EBV	Beraamde teelwaarde
Animal identification number	ID	ID	Dier se identifikasie nommer
Herd Book Section (SEC)	Herd Book	Kuddeboek	Kuddeboek Afdeling (SEC)
SEC: Pending Registration	PEN	PEN	SEC: Wag vir Registrasie
SEC: Not for Registration	NFR	NFR	SEC: Nie vir Registrasie
SEC: Foundation Generation	FO	FO	SEC: Fondasie Generasie
SEC: Appendix A	A	A	SEC: Aanhangsel A
SEC: Appendix B	B	B	SEC: Aanhangsel B
SEC: Studbook Proper, a registered animal	SP	SP	SEC: Studbook Proper, 'n geregistreerde dier
Age in years	AGE	OUD.	Ouderdom in jaar
Animal is a singleton, Twin, Triplet etc.	Birth Stat.	Geb. Status	Dier is n enkeling, tweeling, drieling esv.
Age at First Lambing	AFL	OEL	Ouderdom met Eerst Lamming
Inter-Lambing Period	ILP	ILP	Interlam Periode
Ewe Production Index	EPI	OPI	Ooi Produksie Indeks
Number of times lambed	Lambed	Gelam	Aantal keer gelam
Number of lambs born	Lambs	Lammers	Aantal lammers gebore
Number of lambs weaned	Weaned	Gespeen	Aantal lammers gespeen
Parentage verification	Parentage	Ouerskap	Ouerskap verifikasie
Microsatellite parentage verification	DNA	DNS	Mikrosateliel ouerskap verifikasie
Microsatellite parentage verification	DNA	DNS	Mikrosateliel ouerskap verifikasie
Genomic Testing via SNPs	Genomic	Genomies	Genetiese toetsing dmv SNPs
Genomically Tested	GT	GT	Genomies Getoets
Logix Merit Index	LMI	LMI	Logix Meriete Indeks
Growth Index	GI	GI	Groei Indeks
Reproduction Index	RI	RI	Reproduksie Indeks
Pre-Wean Direct breeding value	PreWn. Dir.	VSpn. Dir	Voorspeen Direk teelwaarde
Pre-Wean Maternal breeding value	PreWn. Mat.	VSpn. Mar	Voorspeen Maternaal teelwaarde
Wean Direct breeding value	Wean Dir.	Spn. Dir.	Speen Direk teelwaarde
Wean Maternal breeding value	Wean Mat.	SPn. Mat.	Speen Maternaal teelwaarde
Post-Wean breeding value	Post-Wn.	Na-pn.	Na-Speen teelwaarde
Number of Lambs Weaned breeding value	NLW	GLS	Getal Lammers Gespeen teelwaarde
Total Weight Weaned breeding value	TWW	TWW	Totale Gewig Gespeen teelwaarde
Average Daily Gain (g/day)	ADG	GDT	Gemiddelde Daaglikse Toename
Feed Conversion Ratio (kg:kg)	FCR	VOV	Voeromset Verhouding

RULES OF AUCTION
TERMS AND CONDITIONS

1. This auction will be held under the control of BKB Limited (hereinafter referred to as "the Auctioneer") with business premises situate at:
61 Grahamstown Road, North End, Port Elizabeth, 6001
2. The Auctioneer is hereby appointed by the Purchaser and Seller to act for and on behalf of the Purchaser and Seller as agent in accordance with Section 54 of the Value-Added Tax Act, 1991, in respect of all tax invoices, credit and/or debit notes in respect of all livestock, game and/or goods offered at the auction or any costs of transport and insurances premiums paid for on behalf of the Purchaser and Seller.
3. The rules of this auction shall comply with the provisions of Section 45 and all relevant regulations to the Consumer Protection Act 68 of 2008.
4. For greater clarity Section 45(1-4) states as follows:
 - 4.1 In this section, "auction" includes a sale in execution of or pursuant to a court order, to the extent that the order contemplates that the sale is to be conducted by an auction.
 - 4.2 When goods are put up for sale by auction, each lot is, unless there is evidence to the contrary, regarded to be the subject of a separate transaction.
 - 4.3 A sale by auction is complete when the auctioneer announces its completion by the fall of the hammer, or in any other customary manner, and until that announcement is made, a bid may be retracted.
 - 4.4 Notice must be given in advance that a lot or sale by auction is subject to:
 - 4.4.1 A reserved or upset price; or
 - 4.4.2 A right to bid by or on behalf of the owner or auctioneer, in which case the owner or auctioneer, or any one person on behalf of the owner or auctioneer, as the case may be, may bid at the auction.
5. Until the fall of the hammer as contemplated in Section 45(3) of the Act, any bid may be retracted or declined by the Auctioneer if not compliant with the regulations of the Consumer Protection Act.
6. The auction is not an absolute auction but subject to reserved prices settled by the sellers and as pointed out by the Auctioneer prior to the sale of the set asset or lot.
7. The auction shall take place at the date and time as advertised or publicised and will not be postponed or delayed to enable any member or group of the public to partake in the auction.
8. Should the Auctioneer become aware of any fault on advertising material or any other publication or amendment to these Rules of Auction, the Auctioneer will prior to the auction point out and when necessary amend such mistakes in the advertisement or publication.
9. Any person attending the auction to enter a bid, must prior to the auction register as a buyer on the bidders' roll and comply with the conditions as set out in Chapter 1 of FICA 2001. The purchaser shall sign the bidders' roll/card.
10. Any person who attends the auction to enter a bid on behalf of another person must be duly authorised thereto by means of a written letter of authority from its principal and such a person together with his principal must both register prior to the auction on the bidders' roll and provide all necessary information as required in Chapter 1 of the regulations issued in terms of FICA 2001 with regard to proof of its identity. The bidders' roll must be signed by such a person and on behalf of its principal.
11. Where the principal is a company the letters of authority shall appear on the letterhead of the company together with a certified copy of a resolution authorizing the person to bid on behalf of the company. (For purposes of this rule any reference to a company will include any reference to juristic person including partnerships, trusts or incorporated entities).
12. All purchasers have a right of inspection of all goods put up for sale and the auctioneer shall provide reasonable time and access prior to the start of the auction for such an inspection.
13. All livestock and goods are sold "voetstoots" and the purchasers do not enjoy the protection of Section 55 and 56 of the Consumer Protection Act.

14. Any information provided regarding the quality, breeding, age, date of insemination, condition, reproductive status or any information regarding health, production or mass or any other aspect of the livestock, is provided by the seller and any misrepresentation by the seller is without the cooperation or knowledge of the Auctioneer. Any right of recourse as a result of such misrepresentation shall be against the seller.
15. Any bid made does not include VAT which, where applicable, will be added to the bidding price for which a VAT invoice will be issued.
16. All sales are for cash and purchase price is payable immediately to the Auctioneer on acceptance of the bid unless otherwise arranged prior to the auction with the Auctioneer. Any payment made in cash is further subject to cash or any other handling fees. Should the Purchaser however fail to make payment within 7 days from date of delivery, BKB will be entitled to add interest calculated at the current bank prime rate plus 5% to the capital amount outstanding. The interest will be calculated monthly and capitalised.
17. Should the purchaser not pay the purchase price immediately and has failed to make arrangements for payment with the Auctioneer, then the Auctioneer can/will cancel the sale and treat the assets or lots as unsold lots which may again be presented on the auction for sale or be sold out of hand by means of liaison services, depending on the seller's mandate to the auctioneer.
18. Ownership in the lot or assets will remain that of the seller until the purchase price has been paid in full to the seller with the provision that the risk in the assets or lot passes to the purchaser at the fall of the hammer as set out in clause 24.
19. In the event that Purchaser has made necessary finance arrangements with BKB, the Purchaser hereby authorises BKB to pay the purchase price or costs of transport, insurance and any other agreed cost, minus BKB's commissions, on behalf of the Purchaser to the Seller and other service providers, in which event the said payment by BKB on behalf of the Purchaser will be deemed to be monies lent and advanced, the terms and conditions thereof being agreed with the Purchaser in a separate credit agreement or sale agreement. All payments made by BKB to the Seller on behalf of the Purchaser in terms of this clause will be made after the lapse of 5 (Five) working days from date of delivery of the asset to the Purchaser. Any payment made by BKB to the Seller prior to the lapse of the 5 (Five) working day period is made at the sole discretion of BKB and not an enforceable indulgence.
20. For as long as any amount is owing to BKB by the Purchaser, the Purchaser may not, where the assets are the subject of security of the Purchaser's credit facility with BKB, relinquish possession of the said asset, nor may he cede the asset or any of its rights and obligations in terms of this agreement to a third party or otherwise encumber, sell or dispossess the said asset or allow it to become the subject of any right of retention, hypothec, pledge or any encumbrance, whatever the cause thereof may be. BKB may be entitled to cede its rights and obligations without affecting its rights of recourse for any monies still due to it.
21. In the event of the Seller already being indebted to BKB or any of its affiliates at the time of this auction, the Seller hereby irrevocably authorises BKB to set off the purchase price due to the Seller by BKB (minus BKB's commission) against the amounts due by the Seller to BKB.
22. Where BKB, in terms of a credit agreement, lent and advanced monies to the Purchaser for payment of the purchase price of any asset or payment of any transport costs or insurance premiums, no defence of whatsoever nature which the Purchaser may raise against the Seller or the transport contractor or the insurance company may be raised against BKB and the Purchaser shall still be obligated to pay all amounts owing, together with further interest and costs thereon raised in terms of the credit agreement or sale agreement, to be BKB. The conditions of this clause do not interfere with the rights, entitlements or remedies the Purchaser may have against the Seller, transport contractor or insurance company.
23. Neither the Purchaser, nor the Seller, shall be entitled to apply set-off or to retain any monies owing arising from any claim they may have against each other or BKB with regards to any amount owing in terms hereof.
24. Each lot shall immediately after the fall of the hammer deemed to be delivered to the purchaser at which time the risk will pass to the purchaser who will at his own risk and cost remove the lots or assets from the auction terrain. Removal of any assets or lots however will not be allowed by the Auctioneer until payment of the purchase price by

the purchaser or acceptable arrangements for payment thereof have been made by the purchaser with the Auctioneer.

25. The Auctioneer will only be obliged to give reasons of the auction if such reasons are other than the voluntary sale of goods by its owners.
26. The bidders' roll and vendor roll will be available for inspection during the normal office hours at the business premises of the Auctioneer.
27. The rules of auction will only be read out at the auction if they were not available to the public at the place of business of the Auctioneer. In the event of livestock and game auctions, the rules of auction remain unchanged and are in general available at the business premises of the Auctioneer or on the website of the Auctioneer.
28. Under no circumstances will BKB be held liable for any loss or damage of any cause whatsoever albeit direct or indirect damages suffered by anyone if the livestock at the auction premises have to be placed under quarantine as a result of the presence of a livestock disease present. In such event BKB will have the right to cancel the auction as well as any already complete sales and no party will be entitled or have a right of recourse against BKB.
29. Any party requiring permits, removal certificate, documentation of identification or any other statutory prescribed document will solely be responsible for obtaining same. Any instructions to an auctioneer with regards to the loading, transporting, choice of transport contractors, insurance or choice of insurers will be executed at the sole risk of the person acquiring such services and the Auctioneer will not be held responsible for any losses whether direct or indirect which may be suffered as a result of giving effect to the instructions by the Auctioneer. The Auctioneer however does accept responsibility as contemplated in Section 35(2) of the Consumer Protection Act whilst the goods or lots are in the possession of the auctioneer. Any agreement entered into by the Auctioneer with a transport company or insurer is done so in its representative capacity of the seller or buyer. All transport costs or insurance premiums are therefore payable to the Auctioneer in cash except if acceptable alternative arrangements were made with the Auctioneer.
30. Both the seller and the buyer consent to the jurisdiction of the Magistrate's Court as contemplated in Section 45 of Act 32 of 1944 having regard to any action which the Auctioneer may institute against the buyer or seller irrespective of the cause of action. Notwithstanding the aforesaid the Auctioneer will have the sole and absolute discretion to institute action in any High Court with appropriate jurisdiction.
31. Any legal costs that BKB may have or will incur as a result of the non-compliance of the Purchaser and/or Seller in terms of its or their obligations herein, shall be recoverable by BKB, together with collection commissions from the Purchaser and/or Seller on a scale as between attorney and own client.
32. No variation, amendment, novation or addition to these terms and conditions will have the effect of BKB renouncing any of its rights in terms hereof, unless it is reduced to writing and signed by BKB.
33. No relaxation or indulgence by the Auctioneer must be interpreted as a waiver of any of the Auctioneer's rights in terms hereof. Such relaxation or indulgence must also not be interpreted as a novation hereof.
34. Should any condition be unlawful or become retrospectively unlawful, that unlawful condition shall be deemed to be amended to the extent and in the manner as is necessary to make it lawful or should such amendment be impossible, the unlawful conditions shall be deemed devisable from the remainder of the conditions and *pro non scripto*.
35. The cattle scale despite being calibrated, is not verified in term of the Legal Metrology Act.
36. The weight as displayed for each lot is an unverified indication of average weight and may not be relied on for purposes of entering a bid.
37. All sales of livestock are sales per head of cattle and not per kilogram
38. Rules of auctions and term and conditions in other languages can be asked for.



The Trusted Home of Agriculture
Die Betroubare Tuiste van Landbou

**Baie dankie vir u
ondersteuning!**