

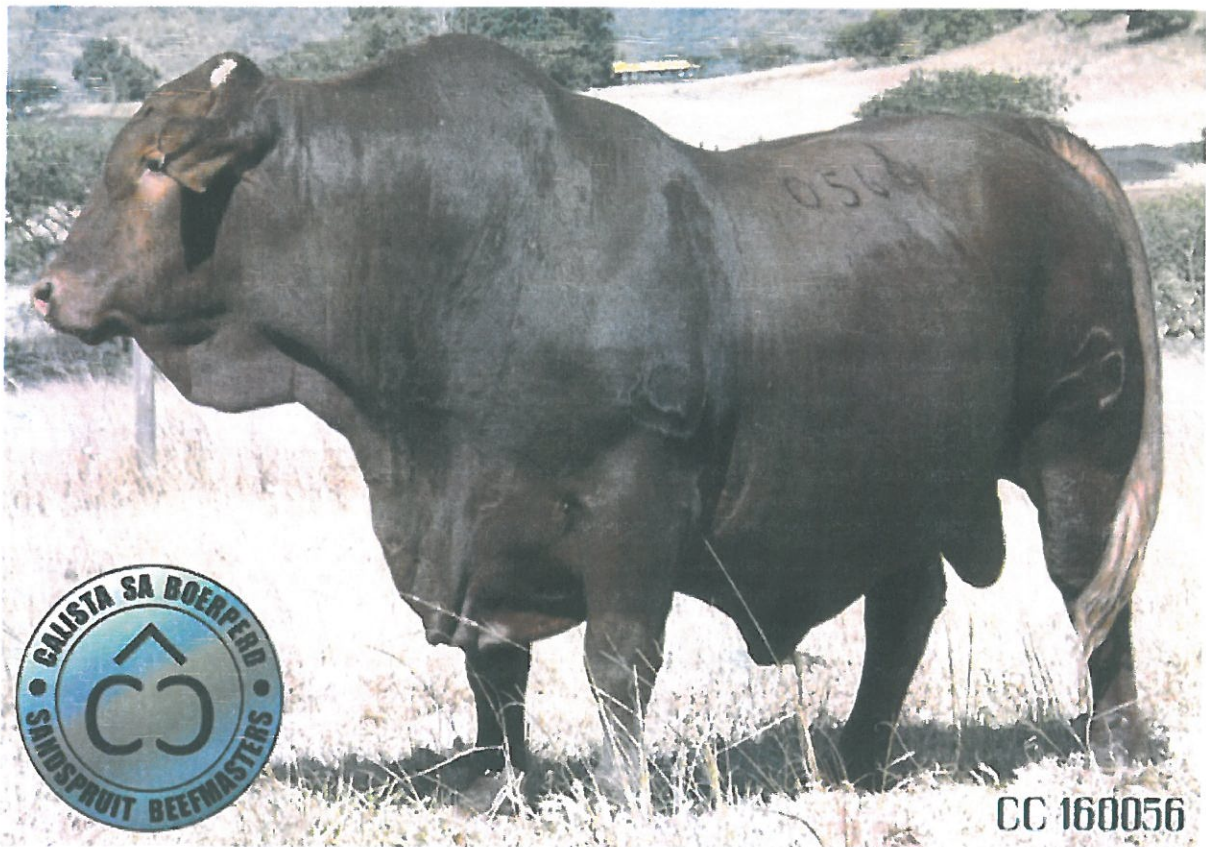
LADYSMITH VEILING GPS: S28°26.093' E29°28.838'

Dinsdag
18 Augustus 2020
11:00 • Oakdale
Ladysmith • KZN

BENUT JOU VELD VOLUIT MET
SANDSPRUIT EN AMAKOSI
BEEFMASTERS



@sandspruitbeef • ansiac@gmail.com • www.bkb.co.za



Veldbul SA

Onder beskerming van die Beefmaster Beestefersgenootskap

ROETE: VANAF HARRISMITH: Ry op die Ladysmith pad (N3) vir 45km. Draai links by plaas in. **VANAF LADYSMITH:** Ry op Harrismith pad (N3) vir 35km. Draai regs by plaas in.

Terre: *Slegs bankgewaarborgde taks of elektroniese betalings op dag van veiling. *Elektroniese oorspringsinligtinge beskikbaar. *FICA dokumentasie word vereis by registrasieproses. *Alle goedere word met 'n reserweprys verkoop en 'n reg bestaan om te bly deur of namens die eienaar of afslers, tensy anders aangedui. Die regulasies van die Wet op Verbruikersbeskerming, 2008 is beskikbaar by <http://www.gov.za/documents/consumer-protection-acl-regulations>. Volledige veilingreëls is beskikbaar by www.bkb.co.za.

100 BULLE & 80 VROUlike DIERE
30 Koeie (dragtig)
30 Verse (dragtig)
20 Verse (oop - gereed vir bul)



NAVRAE:
Xander de Jager 082 832 1248
Wynand Lens 082 329 0227 / Stoffel Mouton 082 329 0225
EENAARS: Charles Campher 083 631 3790
Gert Campher 083 632 4392
Gasverkoper: Kobus Müller 082 550 8532
RKB Louw, BETHLEHEM 058 303 8552

AFSLAERS:
Posbus 220, Bethlehem, 9700
Tel: 058 303 8552 Faks: 058 303 8553
E-pos: bethlehem@bkbkouw.co.za

www.bkb.co.za

BKB
LOUW



BKBLouwid

Welcomes you to the Sale of

Heet u welkom by die Veiling van

SANDSPRUIT & AMAKOSI BEEFMASTERS

ON / OP

18 AUGUST 2020 / 18 AUGUSTUS 2020

At / Te

**OAKDALE,
LADYSMITH.**

Enjoy the day with us!

Geniet die dag saam met ons!

Voorwoord

Baie welkom by ons 22e Beefmaster Bulveiling!!

In hierdie vreemde tye waarin ons leef, is ons opnuut weer dankbaar dat ons kan boer. Dankbaar dat ons kan werk en baie dankbaar vir spasie waar ons ons passie kan uiteleef!

Sandspruit & Amakosi Beefmasters teel al 46 jaar lank Beefmaster tipe beeste, waarvan 25 jaar Stoet Beefmasters is. Ons streef om geharde, aangepaste, vrugbare, rooi beeste met goeie bespieroing & konstitusie te teel om onder ekstensiewe toestande te gedy en vanaf die veld bemark te kan word. Ons beeste presteer ook jaarliks op die Vetveeskou wat 'n goeie belegging en waarde vir geld in die voerkraal is.

Bulle word op 14 maande en 2 jaar in die kudde gebruik. Op 3 jaar word die bulle afgerond en op die Sandspruit & Amakosi Beefmaster Bulveiling aangebied.

Ons is baie dank verskuldig aan ons Hemelse Vader vir die geleentheid en voorreg om met sulke prag diere te kan boer. Wat 'n groot voorreg?!

Baie sterkte aan ons gasverkoper Kobus Muller! Dankie ook vir al julle hulp.

Baie, baie welkom by Sandspruit & Amakosi se 22e Bulveiling. Baie dankie vir die afgelope jare se ondersteuning. Ons waardeer dit opreg!!

Ons is trots om ons diere met julle te kan deel. Geniet die dag saam met ons!!

Campher familie

Bedankings

Dankie aan Dr Hannes Dreyer vir sy positiewe bydrae tot die Sandspruit & Amakosi kudde. Baie dankie vir jare se hulp en ondersteuning. Ons waardeer dit opreg! Dankie ook aan oom Hennie Visser wat help met die bemarking.

Baie dankie aan BKBLouwid KZN vir die moeite met die tent en krale. Dankie ook vir jul harde werk met die merk van beeste en die laaiery na afloop van die veiling. Julle is 'n lekker span om mee saam te werk!

Baie dankie aan Oom Xander, Wynand en Stoffel wat meer doen as waarvoor ons vra! Ons waardeer dit! Julle is staatmakers!

We would like to thank Mark Höhls for his contribution as our auctioneer. We wish him all the best for today.

Baie dankie ook aan Dr Chris Nel ons veearts vir die toets van die bulle en hulle hulp en raad deur die jaar.

Baie dankie aan ons families en gesinne vir hulle hulp en ondersteuning. Dankie ook vir Reinhardt, Simon en Stella vir al julle harde werk. Ons waardeer julle!

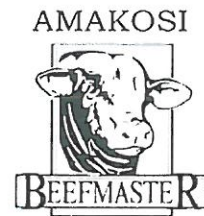
Dankie aan al ons werkers. Ngiyabonga Madoda.

Dankie vir Marista en die dames wat reg staan by die verversings.

Vir almal wat die dag saam met ons kom deel, aan die ou kopers, nuwe kopers en ons vriende wat ons ondersteun, baie dankie..... ons waardeer julle tyd!

'n Spesiale dank aan ons borge Telwiedré Voere, Standard Bank Harrismith en Hinterland Harrismith en Ladysmith, PSG Harrismith, BR dienste Harrismith, Thinus van Virbac asook CN Lourens slaghuis en Oos-Vrystaat Deli wat die heerlike middagete vir julle maak.

"BENUT JOU VELD VOLUIT MET SANDSPRUIT EN AMAKOSI BEEFMASTERS!!!"



ONS DANK AAN DIE VOLGENDE BORGE:



Pieter Coetzee - 079 197 8670



Harrismith - 058 622 1028



(HARRISMITH & LADYSMITH)

Cornè De Klerk - 058 622 1021

Mahesh Rambutt - 036 637 7005



HARRISMITH - 058 624 2428



Carel Lourens - 082 492 6633



(HARRISMITH)

Wessel Hamman - 058 623 0614



Thinus Du Pisanie - 072 313 7353

Die Seleksie Waardes in hierdie verslag dui die genetiese meriete van diere aan – alle omgewingsafekte is uit die waardes verwyder. Seleksie waardes is 'n kombinasie van relevante teelwaardes. Die inligting is gebaseer op diere wat wetenskaplik korrek en presies gemeet is volgens internasionaal aanvaarbare metodes. Teelwaardes word beream uit verskillende bronne van inligting: voorouers, eie prestasie en nageslag.

Seleksie waarde	Wat meet dit?	Notas
Koel Waarde	Genetiese meriete om dogters te teel wat vrugbaar is, melklike kalf, swaar kalwers speen, baie melk het terwyl onderhoud behoeftes laag is.	Kombinasie van die sub-waardes Kalfgemak, Melk, Kalfgroei, Onderhoud en Vrugbaarheid.
Groei Waarde	Bulle / Koel se genetiese meriete vir groei en groei-doeltreffendheid na speen.	Die diere se genetiese vermoë vir groei in een waarde opgesom.
Produkcie Waarde	Kombinasie van Koel waarde en Groei waarde.	Een enkele waarde wat die genetika van die diere opsom.

Maklike interpretasie van Seleksie

Waardes:

- Gemiddeld van lewendige diere in die hele ras: 100
- Bokant 100: meer gewenste rigting.
- Onder 100: minder gewenste rigting

Sub Waarde	Wat beteken 'n waarde bo rangemiddeld (100)?
Kalfgemak	Kleiner kalf by geboorte – makliker kalwing
Melk	Koel met meer melk en beter moeder eienskappe
Kalfgroei	Swaarder kalf by speen as gevolg van groeikragtigheid van die kalf self
Onderhoud	Diere met laer behoeftes vir onderhoud (laer Volwasse gewig EBVs).
Vrugbaarheid	Koel / dogters wat vroeër en/of meer gereeld kalf.

Star Gradering	Seleksie Waarde
☆	<60
★	60-69
★★	70-79
★★★	80-89
★★★★	90-99
★★★★★	100-109
★★★★★	110-119
★★★★★	120-129
★★★★★	130-139
★★★★★	>140



Akkuraatheid (Akk):

Die hoeveelheid inligting beskikbaar vir teelwaarde berekening word aangedui met die akkuraatheid (Akk). Hoe nader aan 100, hoe meer inligting. Jonger diere het laer akkuraatheid as ouer diere. Inligting wat gebruik word, is 'n kombinasie van die volgende:

- Ouers: bekend, akkuraatheid van ouers se teelwaardes
- Eie meting: Dier self gemeet vir eienskap of gemeet vir geneties gekorreleerde eienskap
- Nageslag: Aantal nageslag gemeet vir eienskap of gekorreleerde eienskappe

Wye interpretasie van Akk:

Akk > 80%: Baie inligting. Kl bul,

baie nageslag

Akk > 60%: Dier het gemete nageslag

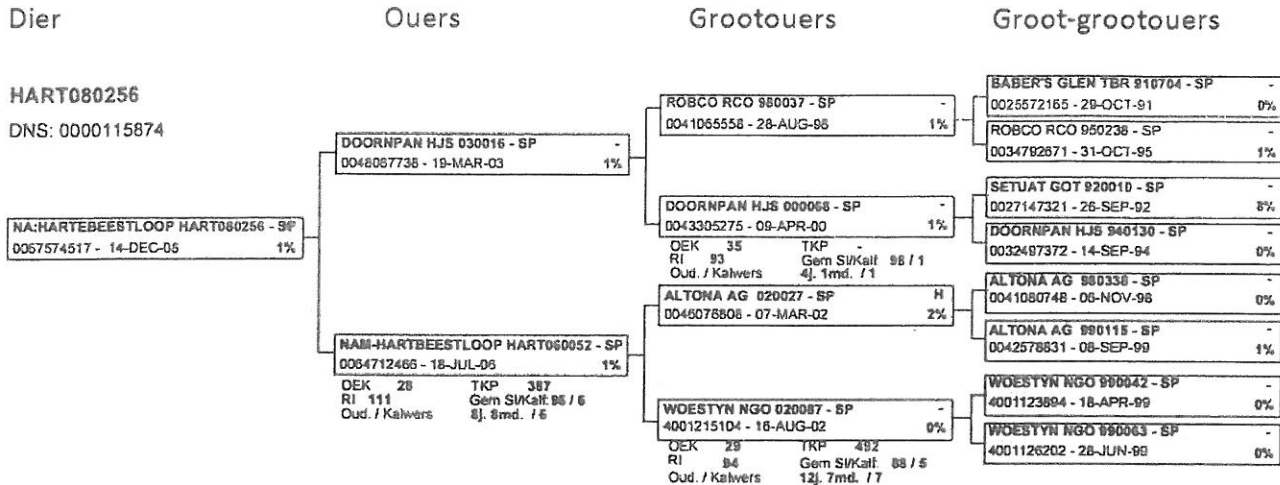
Akk > 30%: Dier gemeet

Akk < 30%: Min inligting

Verduideliking van katalogus

LOT: Lot nommer
 Ident.nr: Identifikasie nommer (Kudde kenmerk + geboorte jaar + volgnummer)
 Afdeling: SP = Studbook Proper (vol geregistreer)
 Reg.nommer: SA Stamboek Registrasie nommer

Stamboom



OEK: Ouderdom met eerste kalwing
 TKP: Tussenkalfperiode
 RI: Reprodusie indeks
 Gem SI/kalf: Gemiddelde Speen Index / Aantal kalwers
 Oud. / Kalwers: Ouderdom van koei en aantal kalwers.

Seleksie W.	KALF GEMAK		MELK	KALFGROEI	ONDERHOUD		GROEI TOETS					VRUGSAARHEID			KOEI	GROEI	PRODUKSIE
	97 ₆₅	87 ₇₃	82 ₈₀	118 ₅₂								88 ₄₈			80 ₈₂	100 ₈₁	86 ₈₂
	Geb gew	Geb Mat	Melk	Speen gew	Naspeen	Volw. gewig	GDT	Kleiber	VOV	Lengte	Hoogte	SO	OEK	TKP			
TW Ind	99	82	87	82	89	82	100	114	109	73	83	84	99	87			
Beraamde TW	1.03 ₈₆	.66 ₇₄	-2.73	2.8 ₈₀	10.7 ₈₅	-12 ₈₂	78 ₆₇	97 ₆₇	-53 ₂₈	-15 ₇₃	-11 ₇₈	.574	-6.5 ₈₃	.5 ₈₀			
Metings	36			268 (100)	- (-)	- (-)	99	102.5	-	1360	1201	353					
Opmerkings:															Semen skenker: Nee		
															Toetse: -		
															Inert: -		

TW ind en TW: Teelwaarde Indeks en Teelwaardes
 (TW word omgesit in maklik interpreteerbare Teelwaarde Indeks)

Geb gew Geboorte Gewig
 Geb Mat Geboorte Maternaal
 Melk Melk
 Speen gew Speengewig
 Naspeen Naspeen gewig (12- en 18 mnde)
 Volw gewig Volwasse gewig
 GDT Gemiddelde daaglikse toename (groei)
 Kleiber Kleiberverhouding (doeltreffende groei op veld)
 VOV Voeromsetverhouding (kg voer/kg gewigstoename)
 Lengte Liggaamslengte
 Hoogte Skouer of heup hoogte
 SO Skrotum omvang
 OEK Ouderdom met eerste kalf
 TKP Tussenkalfperiode

Terme vir veilingskatalogus

<u>Term</u>	<u>Beskrywing/ Description</u>	<u>Reeks</u>
GDT(t)	Growth (ADG) during whole testphase <i>Groei gedurende die toetsfase</i>	Gram/dag
GDT(s)	Growth (ADG) peak summer period <i>Groei gedurende die piek somerperiode (Nov – Jan)</i>	Gram/dag
GDT(t) Ind	ADG(t) as a index /GDT(t) op indeks <i>basis</i>	
GDT(s) Ind	ADG(s) as a index /GDT(s) op indeks <i>basis</i>	
T.T. Ind	Temperament score)/Temperamenttelling	1-9(1=mak, 9=wild)
K.T. Ind	Condition score)/ Kondisie-telling	1-9 (1=maer, 9=oorvet)
Besp Ind	Muscling score)/ <i>Bespiering Indeks</i>	1-5 (1=swak, 5=goed)
Haar Ind	Hair coat/ <i>Haartelling</i>	1-5 (1=glad, 5= harig)
Skrotum Ind	Scrotum circumference as a index/ <i>Skrotum-omtrek op indeks basis</i>	
VVO	Veld Conversion Rate / <i>Veldvoeromset</i>	
Kleiber Ind	Growth rate divided by Metabolic mass/ <i>Groei gedeel deur metaboliese massa</i>	
Ekon Ind	= Economic index (a certain value for each trait and then expressed as an index) <i>Ekonomiese Indeks</i>	

LOT 1

0615855, SANDSPRUIT BEEFMASTERS, POSBUS 2468, LADYSMITH, 3370, (T)083-631 3790



Ident. nommer Geslag Afdeling Reg. nommer Geboorte Datum

SANDSPRUIT
CC170099

CC 170099 MANLIK C

0088386396

30-AUG-17

DNS: ZOBOS20-04994

DNA Profiel: ☒

SANDSPRUIT CC 170099 - C
0088386396 - 30-AUG-17

SANDSPRUIT CC 130059 - B
0079179792 - 24-SEP-13

OUERSKAP GEVERIFIEER

DNS: SIRE
GENOMIES:

SANDSPRUIT CC 140101 - B
0081895476 - 15-NOV-14

OEK 33 TKP 357
RI 108 Gem SI/Kalf: 104 / 1
Oud. / Kalwers 4j.8m. / 3

AMAKOSI GC 120102 - B
0078278843 - 07-NOV-12

SANDSPRUIT GC 080223 - A
0072800154 - 01-JUN-08

OEK - TKP 364
RI 116 Gem SI/Kalf: 102 / 7
Oud. / Kalwers 11j.2m. / 9

MULTIPLE SIREs - MS
0135431172 - 01-JAN-40

SANDSPRUIT GC 070150 - A
0072592462 - 15-JUL-07

OEK - TKP 462
RI 94 Gem SI/Kalf: 100 / 6
Oud. / Kalwers 8j.2m. / 5

MULTIPLE SIREs - MS

0135431172 - 01-JAN-40

GC080506 GC 080506 - A

0075857813 - 01-SEP-08

Publikasie Datum 28-JUL-20	KALF GEMAK ★ ★ ★		MELK ★ ★ ★	KALFGROEI ★ ★ ★	ONDERHOUD		GROEI TOETS					VRUGBAARHEID ★ ★ ★		KOEI WAARDE	GROEI WAARDE	PRODUKSIE WAARDE
Seleksie W.	100 ⁵³		104 ³⁴	94 ⁵⁶	-							92 ²⁴				
	Geb gew	Geb Mat	Melk	Speen gew	Naspeen	Volw. gewig	GDT	Kleiber	VOV	Lengte	Hoogte	SO	OEK	TKP		
TW Ind	101	95	104	94	92	-	-	-	-	-	92	-	92	92	-	-
Beraamde TW	-01 ⁵⁷	-32 ³²	1.1 ³⁴	3.6 ⁵⁸	3.7 ⁵²	-	-	-	-	-	-4 ⁵	-	5.2 ²⁶	-2.5 ¹¹	-	-
Metings	33			223 (104)	298 (102)	395 (102)	-	-	-	-	-	-				
Semen skenker: Nee																

BUL	SKRT	VVO	GDT Ind T	Kond ind	Besp ind	Temp ind	Haar ind	Ekon ind
CC170099	38	12.69	101	108	111	137	47	109

Opmerking : Bul met goeie breedte en haarkwaliteit.

LOT 2

0615855, SANDSPRUIT BEEFMASTERS, POSBUS 2468, LADYSMITH, 3370, (T)083-631 3790



Ident. number Sex Section Reg. number Birth Date

SANDSPRUIT
CC170101

CC 170101 MALE C

0088386412

30-AUG-17

DNA: ZOBOS20-04996

DNA Profiel: ☒

SANDSPRUIT CC 170101 - C
0088386412 - 30-AUG-17

SANDSPRUIT GC 070065 - B
0066661950 - 08-OCT-07

PARENTAGE VERIFIED

DNA: SIRE
GENOMIC:

SANDSPRUIT CC 140045 - B
0081262818 - 24-SEP-14

AFC 35 ICP 381
RI 102 Avg. Wt/Kalf: 101 / 1
Age / Calves 5j.0m. / 3

MULTIPLE SIREs - MS
0135431172 - 01-JAN-40

GC 02 44 GC 020044 - A
0061236238 - 29-JUL-02

AFC - ICP 368
RI 115 Avg. Wt/Kalf: 98 / 9
Age / Calves 10j.2m. / 8

MULTIPLE SIREs - MS
0135431172 - 01-JAN-40

SANDSPRUIT GC 080226 - A
0072800196 - 01-JUN-08

AFC - ICP 370
RI 115 Avg. Wt/Kalf: 98 / 5
Age / Calves 7j.2m. / 5

Publication Date 28-JUL-20	CALVING EASE ★ ★ ★		MILK ★ ★ ★	CALF GRWTH ★ ★ ★	MAINTENANCE		GROWTH TEST					FERTILITY ★ ★ ★		COW VALUE	GROWTH VALUE	PRODUCTION VALUE
Selection V.	104 ⁵⁸		98 ³⁶	95 ⁶¹	-							106 ²⁷				
	Birth wght	Birth Mat	Milk	Wean wght	Post wean	Mature wght	ADG	Kleiber	FCR	Length	Height	SC	AFC	ICP		
BV Ind	104	97	98	95	94	-	88	92	-	87	89	89	112	102	-	-
Estimated BV	-29 ⁸²	-26 ³⁶	-4 ³⁶	3.9 ⁶¹	5.1 ⁶⁷	-	-11 ¹⁰	18 ¹⁰	-	-6 ¹²	-6 ¹³	1.9 ¹³	-9.9 ²⁶	-4.5 ¹³	-	-
Measurements	33			218 (101)	317 (109)	414 (107)	-	-	-	-	-	-				
Semen donor: No																
Tests: -																
Vacc. -																
Remarks:																

BUL	SKRT	VVO	GDT Ind T	Kond ind	Besp ind	Temp ind	Haar ind	Ekon ind
CC170101	45	13.33	96	108	102	109	79	107

Opmerking : Lewendige bul met baie goeie diepte, breedte en bespierung. GC070065 seun.



VEILINGSKATALOGUS

Amakosi Beefmasters

Datum: 18 Aug 2020

LOT 3

M

Naam:
GC17-0082

Ident. Nummer:
GC170082
Bul

Reg. Nummer:
008663849

Afdeling:
B

Geboorte Datum:
05/10/17

Kleur:
Rooi

Vaar: MULTISIRE

P.G. Vaar:

P.G. Moer:

Gem TKP: - (-)

OEK: -

Moer: GC13-0007 - 02/03/13

GC130007 0078248911

Kalwings: 10/15, 10/16, 10/17, 08/18, 09/19

M.G. Vaar:

M.G. Moer:

GC090409 - 01/08/09

GC090409 0075857516

Gem TKP: 363 (5)

OEK: 31 (5)

Gem TKP: 446 (4)

OEK: 31 (4)

	Geboorte	Speen (205)	12M	18M	GDT	GDO	VOV	SO	L:H	Fase
Prestasie	32	241	300	400				376		B
Indekse		101	99	100						
Tydgenote		32	20	15						
Teeltwaardes - direk	0.11 (53)	1.6 (50)	0.3 (47)	0.3 (50)	- (-)					
Teeltwaardes - maternas	0.42 (31)	2.3 (26)								

Teeltwaardes - 02/2 020			
VOV	- (-)	Kalf Temp	- (-)
Klb	- (-)	Volw Gew	- (-)
SO	- (-)	Voer Wins	- (-)
Lengte	- (-)	Hoogte	- (-)

Opmerkings: Hard-bespierde bul. Skrotum omtrek van 38cm.

BUL	SKRT	VVO	GDT Ind T	Kond ind	Besp ind	Temp ind	Haar ind	Ekon ind
GC170082	38	*	*	*	*	*	*	*

Opmerking : Hard bespiede bul.

LOT 4

M

Naam:
GC17-0062

Ident. Nummer:
17-0062GC
Bul

Reg. Nummer:
404210985

Afdeling:
Comm

Geboorte Datum:
14/09/17

Kleur:
Rooi

Vaar: MULTISIRE - 09/01/18

P.G. Vaar:

P.G. Moer:

Gem TKP: - (-)

OEK: -

Moer: GC13-0077 - 11/06/13

GC130077GC 4041969264

Kalwings: 10/16, 09/17, 05/19, 05/20

M.G. Vaar:

M.G. Moer:

Gem TKP: - (-)

OEK: -

	Geboorte	Speen (205)	12M	18M	GDT	GDO	VOV	SO	L:H	Fase
Prestasie	35	237	279	492				408		B
Indekse		101	101	100						
Tydgenote		5	5	8						
Teeltwaardes - direk	- (-)	- (-)	- (-)	- (-)	- (-)					
Teeltwaardes - maternas	- (-)	- (-)								

Teeltwaardes - 09/2 017			
VOV	- (-)	Kalf Temp	- (-)
Klb	- (-)	Volw Gew	- (-)
SO	- (-)	Voer Wins	- (-)
Lengte	- (-)	Hoogte	- (-)

Opmerkings: Afrika Droughtmaster Tipe. Lekker bul met 'n lewendige temperament. Skrotum omtrek van 41cm.

BUL	SKRT	VVO	GDT Ind T	Kond ind	Besp ind	Temp ind	Haar ind	Ekon ind
GC170062	41	*	*	*	*	*	*	*

Opmerking : Kommersieel. Lekker bul met lewendige temperament.

LOT 5



0615855, SANDSPRUIT BEEFMASTERS, POSBUS 2468, LADYSMITH, 3370, (T)083-631 3790



SA STAMBOEK

Ident. nommer Geslag Afdeling Reg. nommer Geboorte Datum

SANDSPRUIT
CC 170128

CC 170128 MANLIK C

0090067695 20-SEP-17

DNS: ZOBOS20-05002

DNA Profiel: ☒

SANDSPRUIT CC 170128 - C
0090067695 - 20-SEP-17 0%

SANDSPRUIT CC 130125 - C
0079181392 - 06-AUG-13 0%

OUERSKAP GEVERIFIEER

DNS: SIRE
GENOMIES:



SANDSPRUIT CC 140099 - B
0081265894 - 15-NOV-14 0%

OEK 34 TKP 347
RI 107 Gem SI/Kalf: 95 / 1
Oud. / Kalwers 4j.9m. / 3

WO WO 100299 - SP
0072433204 - 29-SEP-10 0%

SANDSPRUIT GC 100090 - B
0072745813 - 08-AUG-10 0%

OEK 36 TKP 546
RI 83 Gem SI/Kalf: 102 / 3
Oud. / Kalwers 5j.11m. / 3

MULTIPLE SIRES - - MS
0135431172 - 01-JAN-40 -%

SANDSPRUIT GC 080246 - A
0072800386 - 01-JUN-08 0%

OEK - TKP 377
RI 113 Gem SI/Kalf: 98 / 6
Oud. / Kalwers 8j.5m. / 6

LASATER 4248 4248 - SP
0066097965 - 06-AUG-04 0%

WO WO 010181 - SP
0048719033 - 10-JUN-01 3%

MULTIPLE SIRES - - MS
0135431172 - 01-JAN-40 -%

GC 02 52 GC 020052 - A
0061236311 - 06-AUG-02 0%

--- -%

--- -%

--- -%

--- -%

Publikasie Datum 28-JUL-20	KALF GEMAK ★★★	MELK ★★★	KALFGROEI ★★★	ONDERHOUD ★★★	GROEI TOETS						VRUGBAARHEID ★★★		KOEI WAARDE ★★★	GROEI WAARDE	PRODUKSIE WAARDE
Seleksie W.	102 ₄₀	96 ₃₆	101 ₅₈	108 ₁₄							95 ₂₉				
	Geb gew	Geb Mat	Melk	Speen gew	Naspeen	Volw. gewig	GDT	Kleiber	VOV	Lengte	Hoogte	SO	OEK	TKP	
TW Ind	103	92	96	101	103	94	93	93	-	95	100	95	97	94	
Beraamde TW	-22 ₄₂	-39 ₂₈	-9 ₃₆	6.7 ₅₈	10.9 ₅₃	-2 ₁₄	3 ₁₅	20 ₁₅	-	1 ₁₆	0 ₁₆	4.5 ₁₆	-9 ₃₁	-3 ₁₉	
Metings	-	-	-	238 (95)	366 (112)	437 (111)	-	-	-	-	-	-	-	-	

Semen skenker: Nee

BUL	SKRT	VVO	GDT Ind T	Kond ind	Besp ind	Temp ind	Haar ind	Ekon ind
CC1700128	40	12.04	110	108	109	164	94	107

Opmerking : Lewendige bul met uitstekende lengte, bespierung en kop. WO100299 kleinseun.

LOT 6



0615855, SANDSPRUIT BEEFMASTERS, POSBUS 2468, LADYSMITH, 3370, (T)083-631 3790



SA STAMBOEK

Ident. number Sex Section Reg. number Birth Date

SANDSPRUIT
CC 170157

CC 170157 MALE C

0090411570 25-OCT-17

DNA: ZOBOS20-05009

DNA Profiel: ☒

SANDSPRUIT CC 170157 - C
0090411570 - 25-OCT-17 0%

SANDSPRUIT CC 140290 - C
0085242444 - 15-AUG-14 0%

PARENTAGE VERIFIED

DNA: SIRE
GENOMIC:



SANDSPRUIT CC 130138 - B
0079181509 - 06-AUG-13 0%

AFC 38 ICP 378
RI 93 Avg. Wt/Kalf: 111 / 2
Age / Calves 4j.2m. / 2

WO WO 100299 - SP
0072433204 - 29-SEP-10 0%

SANDSPRUIT CC 110071 - B
0074935024 - 15-AUG-11 0%

AFC 36 ICP 398
RI 96 Avg. Wt/Kalf: 109 / 2
Age / Calves 4j.1m. / 2

MULTIPLE SIRES - - MS
0135431172 - 01-JAN-40 -%

SANDSPRUIT GC 100171 - B
0072617673 - 21-SEP-10 0%

AFC 35 ICP 378
RI 108 Avg. Wt/Kalf: 97 / 5
Age / Calves 9j.1m. / 7

LASATER 4248 4248 - SP
0066097965 - 06-AUG-04 0%

WO WO 010181 - SP
0048719033 - 10-JUN-01 3%

MULTIPLE SIRES - - MS
0135431172 - 01-JAN-40 -%

GC 02 17 GC 020017 - A
0061236659 - 08-JUL-02 0%

--- -%

--- -%

ELMIC MDN 060120 - C
0063781199 - 20-JUN-06 0%

GC 02 29 GC 020029 - A
0061236774 - 14-JUL-02 0%

Publication Date 28-JUL-20	CALVING EASE ★★★	MILK ★★★	CALF GRWTH ★★★★	MAINTENANCE ★★★	GROWTH TEST						FERTILITY ★★★			COW VALUE ★★★	GROWTH VALUE	PRODUCTION VALUE
Selection V.	88 ₄₂	104 ₃₈	110 ₅₇	97 ₁₄							81 ₃₀					
	Birth wght	Birth Mat	Milk	Wean wght	Post wean	Mature wght	ADG	Kleiber	FCR	Length	Height	SC	AFC	ICP		
BV Ind	89	103	104	110	112	101	101	100	-	102	102	96	82	83	90 ₃₄	-
Estimated BV	.91 ₄₄	.08 ₃₁	1.3 ₃₈	11.5 ₅₇	16.9 ₅₃	6 ₁₄	29 ₁₉	32 ₁₉	-	7 ₂₀	1 ₂₁	5.1 ₂₀	12.6 ₃₃	-1 ₂₀		
Measurements	-	-	-	260 (117)	370 (119)	431 (114)	-	-	-	-	-	-	-	-		

Semen donor: No

Tests: -

BUL	SKRT	VVO	GDT Ind T	Kond ind	Besp ind	Temp ind	Haar ind	Ekon ind
CC170157	42	10.65	125	101	98	109	94	110

Opmerking : Potensiële kuddevaar. Goeie temperament, bespierung en diepte. Mooi kop. Baie manlikheid. WO100299 kleinseun.



VEILINGSKATALOGUS

Amakosi Beefmasters

Datum: 18 Aug 2020

LOT 7

M

Naam:
GC17-0105Ident. Nommer:
GC170105
BulReg. Nommer:
008663858Afdeling:
BGeboorte Datum:
19/10/17Kleur:
Rooi

Vaar: MULTISIRE

P.G. Vaar:

P.G. Moer:

Gem TKP: - (-)

OEK: -

Moer: GC080108 0075883918

Kalwings: 03/11, 04/12, 05/13, 09/14, 07/15, 10/16, 10/17

M.G. Vaar:

M.G. Moer:

Gem TKP: - (-)

OEK: -

Gem TKP: 403 (7)

OEK: 28 (7)

	Geboorte	Speen (205)	12M	18M	GDT	GDO	VOV	SO	L:H	Fase
Prestasie	32	240	298	397				388		B
Indekse		100	99	99						
Tydgenote		5	20	15						
Teelwaardes - direk	-0.61 (53)	0.5 (51)	-0.1 (47)	-0.4 (49)	- (-)					
Teelwaardes - matemaal	0.34 (35)	1.4 (36)								

Teelwaardes - 02/2 020			
VOV	- (-)	Kalf Temp	- (-)
Klb	- (-)	Volw Gew	- (-)
SO	- (-)	Voer Wins	- (-)
Lengte	- (-)	Hoogte	- (-)

Opmerkings: Vroegryp bul met goeie bespiering. Skrotum omtrek van 38cm.

Veldbuldata:							
VVO	GDT(T)Ind	Kond Ind	Besp Ind	Skr Ind	Temp Ind	Haar Ind	Ekon
9.09	91	90	89	99	110	87	97

LOT 8

M

Naam:
GC17-0019Ident. Nommer:
17-0019GC
BulReg. Nommer:
404210987Afdeling:
CommGeboorte Datum:
05/07/17Kleur:
Rooi

Vaar: MULTISIRE

P.G. Vaar:

P.G. Moer:

Gem TKP: - (-)

OEK: -

Moer: GC14-0086 4041968696

Kalwings: 07/17, 03/19

M.G. Vaar:

M.G. Moer:

Gem TKP: - (-)

OEK: -

Gem TKP: 618 (2)

OEK: 35 (2)

	Geboorte	Speen (205)	12M	18M	GDT	GDO	VOV	SO	L:H	Fase
Prestasie	35	242	261	519				365		B
Indekse		99	98	102						
Tydgenote		4	8	11						
Teelwaardes - direk	- (-)	- (-)	- (-)	- (-)	- (-)					
Teelwaardes - matemaal	- (-)	- (-)								

Teelwaardes - 07/2 017			
VOV	- (-)	Kalf Temp	- (-)
Klb	- (-)	Volw Gew	- (-)
SO	- (-)	Voer Wins	- (-)
Lengte	- (-)	Hoogte	- (-)

Opmerkings: Afrika Droughtmaster Tipe. Bul met goeie topline en baie kapasiteit. Skrotum omtrek van 37cm.

Veldbuldata:							
VVO	GDT(T)Ind	Kond Ind	Besp Ind	Skr Ind	Temp Ind	Haar Ind	Ekon
7.69	113	93	101	91	115	146	99

LOT 9



SA STAMBOEK

0615855, SANDSPRUIT BEEFMASTERS, POSBUS 2468, LADYSMITH, 3370, (T)083-631 3790



SA STAMBOEK

SANDSPRUIT
CC170035

Ident. nommer Geslag Afdeling
CC 170035 MANLIK B

Reg. nommer Geboorte Datum
0086784022 17-MAY-17

DNS: ZOBOS20-04984

DNA Profiel: ☒

SANDSPRUIT CC 170035 - B
0086784022 - 17-MAY-17

MULTIPLE SIRES - MS
0135431172 - 01-JAN-40

OVERSKAP GEVERIFIEER
DNS:
GENOMIES:



SANDSPRUIT CC 120128 - B
0076935980 - 01-OCT-12

OEK 34 TKP 456
RI 95 Gem SI/Kalf: 100 / 2
Oud. / Kalwers 6j.7m. / 4

MULTIPLE SIRES - MS
0135431172 - 01-JAN-40

SANDSPRUIT GC 090104 - B
0070938329 - 21-AUG-09

OEK 37 TKP 335
RI 98 Gem SI/Kalf: 99 / 2
Oud. / Kalwers 4j.0m. / 2

MULTIPLE SIRES - MS
0135431172 - 01-JAN-40

SANDSPRUIT GC 050113 - A
0086808363 - 15-SEP-05

Publikasie Datum	KALF GEMAK ★ ★ ★	MELK ★ ★ ★	KALFGROEI ★ ★ ★	ONDERHOUD		GROEI TOETS						VRUGBAARHEID ★ ★		KOEI WAARDE	GROEI WAARDE	PRODUKSIE WAARDE
Seleksie W.	107 ₄₉	99 ₃₀	93 ₅₂	-		GDT	Kleiber	VOV	Lengte	Hoogte	SO	80 ₂₃ OEK TKP				
	Geb gew	Geb Mat	Melk	Speen gew	Naspeen	Volw. gewig										
TW Ind	106	102	99	93	91	-	-	-	-	-	-	91	90	-	-	-
Beraamde TW	-41 ₅₃	.11 ₂₉	-1.30	3.2 ₅₂	3.1 ₅₀	-	-	-	-	-	-	5.4 ₂₅	-2.3 ₁₄			
Metings	32			234 (105)	266 (98)	438(105)	-	-	-	-	-			Semen skenker: Nee		

BUL	SKRT	VVO	GDT Ind T	Kond ind	Besp ind	Temp ind	Haar ind	Ekon ind
CC170035	40	11.73	153	115	102	109	79	124

Opmerking : Bul met besondere breedte en diepte. 'n Lekker dik bul met goeie manlikheid.

LOT 10



SA STAMBOEK

0615855, SANDSPRUIT BEEFMASTERS, POSBUS 2468, LADYSMITH, 3370, (T)083-631 3790



SA STAMBOEK

SANDSPRUIT
CC170165

Ident. number Sex Section
CC 170165 MALE C

Reg. number Birth Date
0088557152 17-MAY-17

DNA: ZOBOS20-05012

DNA Profiel: ☒

SANDSPRUIT CC 170165 - C
0088557152 - 17-MAY-17

SANDSPRUIT CC 140001 - C
0081260689 - 15-AUG-14

PARENTAGE VERIFIED
DNA: SIRE
GENOMIC:



SANDSPRUIT CC 140061 - B
0081267114 - 01-OCT-14

AFC 32 ICP 403
RI 106 Avg. Wt/Calf: 98 / 1
Age / Calves 4j.9m. / 3

WO WO 100299 - SP
0072433204 - 29-SEP-10

SANDSPRUIT GC 100059 - B
0072653058 - 11-APR-10

AFC 40 ICP 377
RI 95 Avg. Wt/Calf: 99 / 3
Age / Calves 5j.4m. / 3

MULTIPLE SIRES - MS
0135431172 - 01-JAN-40

SANDSPRUIT GC 100100 - B
0072746399 - 08-AUG-10

AFC 36 ICP 413
RI 101 Avg. Wt/Calf: 99 / 5
Age / Calves 9j.9m. / 7

LASATER 4248 4248 - SP
0066097965 - 06-AUG-04

WO WO 010181 - SP
0048719033 - 10-JUN-01

MULTIPLE SIRES - MS
0135431172 - 01-JAN-40

GC 02 38 GC 020038 - A
0061236170 - 23-JUL-02

MULTIPLE SIRES - MS
0135431172 - 01-JAN-40

MULTIPLE SIRES - MS
0135431172 - 01-JAN-40

GC01140 GC 010140 - A
0064340524 - 14-JUL-01

Publication Date 28-JUL-20	CALVING EASE ☆☆☆	MILK ★★★★	CALF GRWTH ☆☆☆	MAINTENANCE ★★★★		GROWTH TEST						FERTILITY ☆☆		COW VALUE	GROWTH VALUE	PRODUCTION VALUE
Selection V.	97 ⁵⁶	101 ³⁶	90 ⁵⁹	115 ¹⁴								83 ²⁹				
	Birth wght	Birth Mat	Milk	Wean wght	Post wean	Mature wght	ADG	Kleiber	FCR	Length	Height	SC	AFC	ICP	☆☆	
BV Ind	98	92	101	90	91	86	85	87	-	87	93	86	79	86	84 ³⁵	-
Estimated BV	.18 ⁶⁰	.4 ³⁵	.5 ³⁸	1.6 ⁶⁹	2.8 ⁶⁵	-10 ¹⁴	-22 ¹⁸	11 ¹⁶	-	-6 ¹⁷	-4 ¹⁷	.5 ¹⁷	14.4 ³²	-1.5 ²⁰		
Measurements	35			221 (98)	263 (97)	430(103)	-	-	-	-	-	-	-	-	Semen donor: No	

BUL	SKRT	VVO	GDT Ind T	Kond ind	Besp ind	Temp ind	Haar ind	Ekon ind
CC170165	44	9.91	139	90	92	82	79	113

Opmerking : Bul met 'n baie mooi kop. Goeie lengte, breedte en bespierung. WO100299 kleinseun.

LOT 11

SA Stribeek

0615855, SANDSPRUIT BEEFMASTERS, POSBUS 2468, LADYSMITH, 3370, (T)083-631 3790



Ident. nommer Geslag Afdeling Reg. nommer Geboorte Datum

**SANDSPRUIT
CC170029**
CC 170029 MANLIK C
0086784014 17-MAY-17

DNS: C18-15182

 DNA Profiel: ☒

 SANDSPRUIT CC 170029 - C
0086784014 - 17-MAY-17

 SANDSPRUIT CC 140290 - C
0085242444 - 15-AUG-14

0%

OUERSKAP GEVERIFIEER

 DNS: SIRE
GENOMIES:

 SANDSPRUIT CC 120032 - B
0076930452 - 10-SEP-12

0%

 OEK 35 TKP 452
RI 95 Gem SI/Kalf: 98 / 2
Oud. / Kalwers 6j.7m. / 4

 WO WO 100299 - SP
0072433204 - 29-SEP-10

0%

 SANDSPRUIT CC 110071 - B
0074935024 - 15-AUG-11

0%

 OEK 36 TKP 398
RI 96 Gem SI/Kalf: 109 / 2
Oud. / Kalwers 4j.1m. / 2

 MULTIPLE SIREs - - MS
0135431172 - 01-JAN-40

-%

 GC00131 GC 000131 - A
0064340201 - 16-JUL-00

0%

 OEK - TKP 369
RI 115 Gem SI/Kalf: 98 / 7
Oud. / Kalwers 13j.1m. / 8

LASATER 4248 4248 - SP

0%

 WO WO 010181 - SP
0048719033 - 10-JUN-01

3%

 MULTIPLE SIREs - - MS
0135431172 - 01-JAN-40

-%

 GC 02 17 GC 020017 - A
0061236659 - 08-JUL-02

0%

 - - - - -
- - - - -

-%

 - - - - -
- - - - -

-%

 - - - - -
- - - - -

-%

 - - - - -
- - - - -

-%

Publikasie Datum 28-JUL-20	KALF GEMAK		MELK	KALFGROEI	ONDERHOUD		GROEI TOETS					VRUGBAARHEID			KOEI WAARDE	GROEI WAARDE	PRODUKSIE WAARDE
Seleksie W.	100 ₅₅		100 ₃₆	98 ₅₈	101 ₁₄							92 ₃₀			★★★		
	Geb gew	Geb Mat	Melk	Speen gew	Naspeen	Volw. gewig	GDT	Kleiber	VOV	Lengte	Hoogte	SO	OEK	TKP	★★★		
TW Ind	100	103	100	98	97	97	94	94	-	97	101	94	96	95	90 ₃₆	-	-
Beraamde TW	.07 ₅₉	.08 ₃₆	.1 ₃₈	5.3 ₅₈	6.7 ₅₅	2 ₁₄	8 ₁₅	22 ₁₅	-	2 ₁₆	1 ₁₇	4.2 ₁₈	1.7 ₃₁	-3.1 ₂₀			
Metings	33			227 (102)	262 (97)	408 (97)	-	-	-	-	-	-	-	-	Semen skenker: Nee		

BUL	SKRT	VVO	GDT Ind T	Kond ind	Besp ind	Temp ind	Haar ind	Ekon ind
CC170029	42	14.64	120	101	104	109	79	110

 Opmerking : Potensiële kuddevaar. Goeie haar, breedte, lengte, diepte en been.
WO100299 kleinseun.

LOT 12
M

 Naam:
GC17-0087
DNA: ZOBOS20-04954

 Ident. Nummer:
GC170087
Bul

 Reg. Nummer: Afdeling: Geboorte Datum: Kleur:
008663857 C 09/10/17 Rooi

 Vaar: GC06-0026 - 15/08/06
GC060026 0064059876

P.G. Vaar:
P.G. Moer:

Gem TKP: - (-)

OEK: -

 Moer: GC130151 - 26/09/13
GC130151 0078220837
Kalwings: 03/16, 10/17

M.G. Vaar:
M.G. Moer:

 GC030016 - 14/07/03
GC030016 0062929971

Gem TKP: 573 (2)

OEK: 29 (2)

Gem TKP: 367 (8)

OEK: 38 (8)

	Geboorte	Speen (295)	12M	18M	GDT	GDO	VOV	SO	L:H	Fase
Prestasie	31	240	300	401				448		B
Indekse		101	100	101						
Tydenote		32	20	15						
Teeltwaardes - direk	-0.45 (53)	-0.2 (51)	-0.5 (48)	-0.7 (50)	- (-)					
Teeltwaardes - matersaal	0.31 (29)	1.8 (28)								

Teeltwaardes - 02/2 020			
VOV	- (-)	Kalf Temp	- (-)
Klb	- (-)	Volw Gew	- (-)
SO	- (-)	Voer Wins	- (-)
Lengte	- (-)	Hoogte	- (-)

Opmerkings: Diep bul met goeie toplyn. Kom uit die bekende GC 06-0026 lyn. Skrotum omtrek van 45cm.

BUL	SKRT	VVO	GDT Ind T	Kond ind	Besp ind	Temp ind	Haar ind	Ekon ind
GC170087	45	*	*	*	*	*	*	*

Opmerking : Diep bul met goeie toplyn. Kom uit die GC060026 lyn.

LOT 13
M

 Naam:
GC17-0044

 Ident. Nommer:
GC170044
 Bul

 Reg. Nommer:
008663807

 Afdeling:
Comm

 Geboorte Datum:
11/08/17

 Kleur:
Rooi

Vaar: MULTISIRE

P.G. Vaar:

P.G. Moer:

Gem TKP: - (-)

OEK: -

Moer:

 GC14-0009 - 15/05/14
 GC140009 0080104417
 Kalwings: 08/17, 11/18

M.G. Vaar:

M.G. Moer:

 GC110128 - 08/09/11
 GC110128 0075614628

Gem TKP: 453 (2)

OEK: 38 (2)

Gem TKP: 447 (3)

OEK: 32 (3)

	Geboorte	Speen (205)	12M	18M	GDT	GDO	VOV	SO	L:H	Fase
Prestasie	30	247	304	416				394		B
Indekse		101	100	99						
Tydgenote		32	5	18						
Teeltwaardes - direk	-0.03 (53)	1.3 (50)	1.2 (23)	1.5 (24)	- (-)					
Teeltwaardes - matemaal	0.16 (25)	2.1 (26)								

Teeltwaardes - 02/2 020			
VOV	- (-)	Kalf Temp	- (-)
Klb	- (-)	Volw Gew	- (-)
SO	- (-)	Voer Wins	- (-)
Lengte	- (-)	Hoogte	- (-)

BUL	SKRT	VVO	GDT Ind T	Kond ind	Besp ind	Temp ind	Haar ind	Ekon ind
GC170044	42	8.96	90	93	96	57	73	100

Opmerking : Lang bul met goeie toplyn en sterk bene.

LOT 14
M

 Naam:
GC17-0072

 Ident. Nommer:
GC170072
 Bul

 Reg. Nommer:
008662778

 Afdeling:
B

 Geboorte Datum:
19/09/17

 Kleur:
Rooi

Vaar: MULTISIRE

P.G. Vaar:

P.G. Moer:

Gem TKP: - (-)

OEK: -

Moer:

 GC13-0160 - 28/09/13
 GC130160 0078476678
 Kalwings: 04/16, 09/17, 08/18, 08/19

M.G. Vaar:

M.G. Moer:

 GC09-0077 - 01/09/09
 GC090077 0075884114

Gem TKP: 406 (4)

OEK: 30 (4)

Gem TKP: 347 (3)

OEK: 37 (3)

	Geboorte	Speen (205)	12M	18M	GDT	GDO	VOV	SO	L:H	Fase
Prestasie	32	262	293	375				464		B
Indekse		100	100	100						
Tydgenote		2	20	22						
Teeltwaardes - direk	-0.73 (63)	0.9 (54)	1.5 (47)	1.1 (52)	-35 (35)					
Teeltwaardes - matemaal	0.41 (36)	-3.4 (43)								

Teeltwaardes - 02/2 020			
VOV	- (-)	Kalf Temp	- (-)
Klb	1 (35)	Volw Gew	- (-)
SO	0.0 (39)	Voer Wins	- (-)
Lengte	-11 (38)	Hoogte	-10 (40)

Opmerkings: Medium-raam bul met goeie lengte en harde bespiering. Skrotum omtrek 42cm.

Veldbuldata:							
VVO	GDT(T)Ind	Kond Ind	Besp Ind	Skrt Ind	Temp Ind	Haar Ind	Ekon
9.75	102	93	124	100	57	73	113

BUL	SKRT	VVO	GDT Ind T	Kond ind	Besp ind	Temp ind	Haar ind	Ekon ind
GC170072	42	9.75	102	93	124	57	73	113

Opmerking : Medium-raam bul met goeie lengte en harde bespiering.

LOT 15



SA STAMBOEK

0615855, SANDSPRUIT BEEFMASTERS, POSBUS 2468, LADYSMITH, 3370, (T)083-631 3790



Ident. number Sex Section Reg. number Birth Date
SANDSPRUIT CC 170078 MALE C 0086716925 22-MAY-17

DNA: C18-15183

DNA Profile: ☒

SANDSPRUIT CC 170078 - C
 0086716925 - 22-MAY-17 0%

SANDSPRUIT CC 140038 - B
 0081267007 - 24-SEP-14 0%

PARENTAGE VERIFIED
 DNA: SIRE
 GENOMIC:



SANDSPRUIT GC 100154 - B
 0072769664 - 03-SEP-10 0%

AFC 35 ICP 459
 RI 94 Avg. Wt/Calf: 99 / 4
 Age / Calves 9j.2m. / 6

MULTIPLE SIRES - MS
 0135431172 - 01-JAN-40 -%

SANDSPRUIT GC 100117 - B
 0072769383 - 14-AUG-10 0%

AFC 36 ICP 390
 RI 100 Avg. Wt/Calf: 108 / 3
 Age / Calves 5j.1m. / 3

MULTIPLE SIRES - MS
 0135431172 - 01-JAN-40 -%

GC 02 22 GC 020022 - A
 0061236709 - 11-JUL-02 0%

AFC - ICP 366
 RI 116 Avg. Wt/Calf: 99 / 11
 Age / Calves 13j.3m. / 11

MULTIPLE SIRES - MS
 0135431172 - 01-JAN-40 -%

SANDSPRUIT GC 040006 - A
 0062930664 - 21-JUL-04 0%

Publication Date	CALVING EASE	MILK	CALF GRWTH	MAINTENANCE	GROWTH TEST						FERTILITY	COW VALUE	GROWTH VALUE	PRODUCTION VALUE
28-JUL-20	★★★	★★★	★★★	-							★★			
Selection V.	104 ⁵⁶	107 ⁴⁰	93 ⁸⁰	-							85 ²⁷			
Birth wght	Birth Mat	Milk	Wean wght	Post wean	Mature wght	ADG	Kleiber	FCR	Length	Height	SC	AFC	ICP	
BV Ind	105	90	107	93	93	-	-	-	94	96	92	86	94	
Estimated BV	-36 ⁵⁹	.45 ³⁷	1.9 ⁴⁰	2.9 ⁸⁰	4 ⁵⁸	-	-	-	0 ⁵	-2 ⁵	3.2 ⁵	9.8 ²⁹	-3 ¹⁸	
Measurements	34			229 (103)	270 (100)	425 (102)	-	-	-	-	-	-	-	

Semen donor: No

BUL	SKRT	VVO	GDT Ind T	Kond ind	Besp ind	Temp ind	Haar ind	Ekon ind
CC170078	44	13.9	129	115	117	82	63	127

Opmerking : Tipiese Beefmaster. Besondere breedte, diepte en been.

LOT 16



SA STAMBOEK

0615855, SANDSPRUIT BEEFMASTERS, POSBUS 2468, LADYSMITH, 3370, (T)083-631 3790



Ident. nommer Geslag Afdeling Reg. nommer Geboorte Datum
SANDSPRUIT CC 170086 MANLIK C 0088386388 15-AUG-17

DNS: ZOBOS20-04992

DNA Profiel: ☒

SANDSPRUIT CC 170086 - C
 0088386388 - 15-AUG-17 0%

SANDSPRUIT CC 130030 - B
 0079180113 - 09-SEP-13 0%

QUERSKAP GEVERIFIEER
 DNS: SIRE
 GENOMICS:



SANDSPRUIT CC 140077 - B
 0081267262 - 09-OCT-14 0%

OEK 34 TKP 407
 RI 99 Gem SI/Kalf: 100 / 1
 Oud. / Kalwers 3j.11m. / 2

SANDSPRUIT CC 110057 - B
 0074935354 - 08-AUG-11 0%

SANDSPRUIT GC 070216 - A
 0072592413 - 15-JUL-07 0%

OEK - TKP 383
 RI 112 Gem SI/Kalf: 106 / 3
 Oud. / Kalwers 6j.1m. / 3

MULTIPLE SIRES - MS
 0135431172 - 01-JAN-40 -%

SANDSPRUIT GC 080244 - A
 0072800444 - 01-JUN-08 0%

OEK - TKP 359
 RI 118 Gem SI/Kalf: 98 / 5
 Oud. / Kalwers 7j.2m. / 5

MULTIPLE SIRES - MS
 0135431172 - 01-JAN-40 -%

SANDSPRUIT GC 080035 - B
 0068605039 - 05-OCT-08 0%

MULTIPLE SIRES - MS
 0135431172 - 01-JAN-40 -%

MULTIPLE SIRES - MS
 0135431172 - 01-JAN-40 -%

MULTIPLE SIRES - MS
 0135431172 - 01-JAN-40 -%

MULTIPLE SIRES - MS
 0135431172 - 01-JAN-40 -%

MULTIPLE SIRES - MS
 0135431172 - 01-JAN-40 -%

MULTIPLE SIRES - MS
 0135431172 - 01-JAN-40 -%

Publikasie Datum	KALF GEMAK	MELK	KALFGROEI	ONDERHOUD	GROEI TOETS						VRUGBAARHEID	KOEI WAARDE	GROEI WAARDE	PRODUKSIE WAARDE
28-JUL-20	★★★	★★★	★★★	-							★★★			
Seleksie W.	97 ⁶⁶	106 ³³	103 ⁵⁹	-							94 ²³			
Geb gew	Geb Mat	Melk	Speen gew	Naspeen	Volw. gewig	GDT	Kleiber	VOV	Langte	Hoogte	SO	OEK	TKP	
TW Ind	100	87	106	103	106	-	93	94	-	95	98	94	100	94
Beraamde TW	.07 ⁶⁰	.54 ³⁴	1.6 ³³	8 ⁵⁹	13.1 ⁵⁵	-	4 ⁷	22 ⁷	-	1 ⁹	-1 ⁹	4.3 ⁹	-1.3 ²⁵	-3 ⁷
Metings	35			217 (100)	326 (113)	436 (113)	-	-	-	-	-	-	-	-

Semen skenker: Nee

Totale

BUL	SKRT	VVO	GDT Ind T	Kond ind	Besp ind	Temp ind	Haar ind	Ekon ind
CC170086	40	11.08	120	115	102	82	126	109

Opmerking : Dik, breë bul.

LOT 17



SA STAMBOEK
STUD BOOK

0615855, SANDSPRUIT BEEFMASTERS, POSBUS 2468, LADYSMITH, 3370, (T)083-631 3790



Ident. number Sex Section Reg. number Birth Date
CC 170019 MALE C 0089492441 17-MAY-17

SANDSPRUIT
CC170019

DNA: ZOBOS20-04979

DNA Profile: ☒

SANDSPRUIT CC 170019 - C
0089492441 - 17-MAY-17

SANDSPRUIT CC 130030 - B
0079180113 - 09-SEP-13

PARENTAGE VERIFIED

DNA: SIRE
GENOMIC:



SANDSPRUIT CC 130192 - B
0079182226 - 13-AUG-13

AFC 34 ICP 356
RI 107 Avg. Wt/Calf: 102 / 1
Age / Calves 4j.9m. / 3

SANDSPRUIT CC 110057 - B
0074935354 - 08-AUG-11

SANDSPRUIT GC 070216 - A
0072592413 - 15-JUL-07

AFC - ICP 383
RI 112 Avg. Wt/Calf: 106 / 3
Age / Calves 6j.1m. / 3

MULTIPLE SIRES - - MS
0135431172 - 01-JAN-40

SANDSPRUIT GC 100103 - B
0072746449 - 08-AUG-10

AFC 36 ICP 386
RI 100 Avg. Wt/Calf: 99 / 3
Age / Calves 5j.1m. / 3

MULTIPLE SIRES - - MS
0135431172 - 01-JAN-40

SANDSPRUIT GC 080035 - B
0068605039 - 05-OCT-08

MULTIPLE SIRES - - MS
0135431172 - 01-JAN-40

MULTIPLE SIRES - - MS
0135431172 - 01-JAN-40

MULTIPLE SIRES - - MS
0135431172 - 01-JAN-40

SANDSPRUIT GC 060155 - A
0068608769 - 15-SEP-06

Publication Date 28-JUL-20	CALVING EASE ★★★	MILK ★★★	CALF GRWTH ★★★	MAINTENANCE	GROWTH TEST								FERTILITY ★★	COW VALUE	GROWTH VALUE	PRODUCTION VALUE
Selection V.	108 ⁵⁷	107 ³³	91 ⁵⁹	-									82 ²⁶			
	Birth wght	Birth Mat.	Milk	Wean wght	Post wean	Mature wght	ADG	Kleiber	FCR	Length	Height	SC	AFC	ICP		
BV Ind	109	90	107	91	94	-	91	92	-	94	96	92	91	86		
Estimated BV	-66 ⁶¹	.45 ³³	2 ³⁹	2 ⁵⁹	4.9 ⁵⁶	-	-1.7	19.7	-	0	-2	3.3	5.5 ²⁶	-1.4 ¹⁵		
Measurements	32			227 (102)	279 (104)	413 (99)	-	-	-	-	-	-	-	-		

Semen donor: No
Tests: -

BUL	SKRT	VVO	GDT Ind T	Kond ind	Besp ind	Temp ind	Haar ind	Ekon ind
CC170019	38	14.05	115	115	111	82	79	123

Opmerking : Mooi geballanseerde bul. Sterk, breë, diep bul.

LOT 18



SA STAMBOEK
STUD BOOK

0615855, SANDSPRUIT BEEFMASTERS, POSBUS 2468, LADYSMITH, 3370, (T)083-631 3790



Ident. nommer Geslag Afdeling Reg. nommer Geboorte Datum
CC 170190 MANLIK C 0086702651 01-AUG-17

SANDSPRUIT
CC170190

DNS: ZOBOS20-05019

DNA Profiel: ☒

SANDSPRUIT CC 170190 - C
0086702651 - 01-AUG-17

SANDSPRUIT CC 110023 - B
0074934753 - 18-JUL-11

OUERSKAP GEVERIFIEER

DNS: SIRE
GENOMIES:



SANDSPRUIT CC 120141 - B
0078642402 - 01-OCT-12

OEK 34 TKP 359
RI 106 Gem SI/Kalf: 98 / 3
Oud. / Kalwers 4j.10m. / 3

MULTIPLE SIRES - - MS
0135431172 - 01-JAN-40

SANDSPRUIT GC 040027 - A
0062930409 - 27-JUL-04

OEK - TKP 461
RI 94 Gem SI/Kalf: 102 / 5
Oud. / Kalwers 8j.3m. / 5

MULTIPLE SIRES - - MS
0135431172 - 01-JAN-40

SANDSPRUIT GC 090013 - A
0070304472 - 16-APR-09

OEK - TKP 398
RI 109 Gem SI/Kalf: 99 / 5
Oud. / Kalwers 11j.1m. / 8

MULTIPLE SIRES - - MS
0135431172 - 01-JAN-40

MULTIPLE SIRES - - MS
0135431172 - 01-JAN-40

MULTIPLE SIRES - - MS
0135431172 - 01-JAN-40

MULTIPLE SIRES - - MS
0135431172 - 01-JAN-40

SANDSPRUIT GC 040005 - A
0062930862 - 20-JUL-04

Publikasie Datum	KALF GEMAK ★★★★	MELK ★★★	KALFGROEI ★★	ONDERHOUD	GROEI TOETS								VRUGBAARHEID ★★★	KOEI WAARDE	GROEI WAARDE	PRODUKSIE WAARDE
Seleksie W.	117 ⁵⁴	103 ³⁸	77 ⁵⁷	-									104 ²⁵			
	Geb gew	Geb Mat	Melk	Speen gew	Naspeen	Volw. gewig	GDT	Kleiber	VOV	Lengte	Hoogte	SO	OEK	TKP		
TW Ind	115	98	103	77	77	-	-	-	-	-	-	-	108	112		
Beraamde TW	-1.16 ⁵⁸	.22 ³⁵	1 ³⁸	-4.8 ⁵⁷	-6.2 ⁵³	-	-	-	-	-	-	-	-6.7 ²⁸	-6.3 ¹²		
Metings	30			194 (99)	291 (99)	378 (97)	-	-	-	-	-	-	-	-		

Semen skenker: Nee

BUL	SKRT	VVO	GDT Ind T	Kond ind	Besp ind	Temp ind	Haar ind	Ekon ind
CC170190	39	12.33	91	108	109	137	79	102

Opmerking : Klipharde bul. Breed, goeie diepte en bespierung.

LOT 19

M

Naam:
GC17-0102Ident. Nummer:
GC170102
BulReg. Nummer:
008687784Afdeling:
BGeboorte Datum:
18/10/17Kleur:
Rooi

Vaar: MULTISIRE

P.G. Vaar:

P.G. Moer:

Gem TKP: - (-)

OEK: -

Moer: GC130119 - 05/08/13
GC130119 0078248077
Kalwings: 06/16, 10/17, 08/18

M.G. Vaar:

M.G. Moer:

GC07-0219 - 30/07/07
GC070219 0072592165

Gem TKP: 388 (3)

OEK: 34 (3)

Gem TKP: 391 (9)

OEK: 32 (9)

	Geboorte	Speen (205)	12M	18M	GDT	GDO	VOV	SO	LH	Fase
Prestasie	33	262	306	405				420		B
Indekse		99	101	101						
Tydgenote		5	20	15						
Teeltwaardes - direk	-0.06 (54)	-0.2 (49)	-0.3 (28)	-0.5 (27)	- (-)					
Teeltwaardes - maternas	0.41 (31)	2.5 (33)								

Teeltwaardes - 02/2 020			
VOV	- (-)	Kalf Temp	- (-)
Klb	- (-)	Volw Gew	- (-)
SO	- (-)	Voer Wins	- (-)
Lengte	- (-)	Hoogte	- (-)

Opmerkings: Harde bul met goeie lengte. Skrotum omtrek 42cm.

Veldbuldata:							
VVO	GDT(T)Ind	Kond Ind	Besp Ind	Skrt Ind	Temp Ind	Haar Ind	Ekon
7.23	112	90	100	108	110	130	107

AMAKOSI



VEILINGSKATALOGUS

Amakosi Beefmasters

Datum: 18 Aug 2020

LOT 20

M

Naam:
GC17-0005
DNA: Z080520-04949Ident. Nummer:
GC170005
BulReg. Nummer:
008663045Afdeling:
BGeboorte Datum:
13/07/17Kleur:
RooiVaar: GC130021 - 08/07/13
GC130021 0078247475

P.G. Vaar:

GC07-0065 - 08/10/07
GC070065 0066661950

P.G. Moer:

BMAFGC070032 - 22/09/07
GC070032 0066660754

Gem TKP: 402 (7)

OEK: 41 (7)

Moer: GC070235 - 10/08/07
GC070235 0072592033
Kalwings: 03/10, 03/13, 03/12, 05/13, 08/14, 07/15, 07/16, 07/17, 08/18

M.G. Vaar:

MULTISIRE

M.G. Moer:

Gem TKP: 384 (9)

OEK: 31 (9)

Gem TKP: - (-)

OEK: -

	Geboorte	Speen (205)	12M	18M	GDT	GDO	VOV	SO	LH	Fase
Prestasie	33	267	285	360				401		B
Indekse		101	102	100						
Tydgenote		20	16	15						
Teeltwaardes - direk	-0.30 (55)	-0.2 (55)	0.5 (51)	-0.8 (52)	- (-)					
Teeltwaardes - maternas	0.12 (36)	1.8 (40)								

Teeltwaardes - 02/2 020			
VOV	- (-)	Kalf Temp	- (-)
Klb	- (-)	Volw Gew	- (-)
SO	- (-)	Voer Wins	- (-)
Lengte	- (-)	Hoogte	- (-)

Opmerkings: Hard bespieerde donker rooi bul. Lewendige temperament. Skrotum omtrek van 42cm.

Veldbuldata:							
VVO	GDT(T)Ind	Kond Ind	Besp Ind	Skrt Ind	Temp Ind	Haar Ind	Ekon
8.89	109	108	105	105	110	87	111

LOT 21

M

Naam:
GC17-0144Ident. Nommer:
GC170144
BulReg. Nommer:
008681054Afdeling:
BGeboorte Datum:
30/11/17Kleur:
Rooi

Vaar: MULTISIRE

P.G. Vaar:

P.G. Moer:

Gem TKP: - (-)

OEK: -

Moer: GC130080 - 10/06/13
GC130080 0078247848
Kalwings: 11/15, 10/16, 11/17

M.G. Vaar:

M.G. Moer:

GC050124 - 15/09/05
GC050124 0068608637

Gem TKP: 377 (3)

OEK: 28 (3)

Gem TKP: 409 (8)

OEK: 38 (8)

	Geboorte	Speen (205)	12M	18M	GDT	GDO	VOV	SO	LH	Fase
Prestasie	32	241	301	402				434		B
Indekse		101	100	101						
Tydgenote		5	20	15						
Teeltwaardes - direk	-0.32 (54)	-0.8 (51)	-1.1 (48)	-1.6 (50)	- (-)					
Teeltwaardes - matersaal	0.39 (31)	1.4 (27)								

Teeltwaardes - 02/2 020			
VOV	- (-)	Kalf Temp	- (-)
Klb	- (-)	Volw Gew	- (-)
SO	- (-)	Voer Wins	- (-)
Lengte	- (-)	Hoogte	- (-)

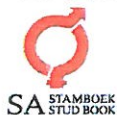
Opmerking: Lang bul met goeietoplyn. Skrotum omtrek 42cm.

Veldbuldata:							
VVO	GDT(T)Ind	Kond Ind	Besp Ind	Skrt Ind	Temp Ind	Haar Ind	Ekon
8.96	88	90	78	110	55	174	91

LOT 22

0615855, SANDSPRUIT BEEFMASTERS, POSBUS 2468, LADYSMITH, 3370, (T)083-631 3790

BEEFMASTER

SA STAMBOEK
STUD BOOKSANDSPRUIT
CC170036

Ident. number

Sex

Section

Reg. number

Birth Date

CC 170036

MALE

C

0086784048

17-MAY-17

DNA: ZOBOS20-04985

DNA Profile: ☒SANDSPRUIT CC 170036 - C
0086784048 - 17-MAY-17 0%SANDSPRUIT CC 140001 - C
0081260689 - 15-AUG-14 0%

PARENTAGE VERIFIED

DNA: SIRE

GENOMIC:

SANDSPRUIT CC 120140 - B
0076936046 - 01-OCT-12 0%AFC 34 ICP 509
RI 88 Avg. Wt/Calf: 104 / 2
Age / Calves 7j.0m. / 4WO WO 100299 - SP
0072433204 - 29-SEP-10 0%SANDSPRUIT GC 100059 - B
0072653058 - 11-APR-10 0%AFC 40 ICP 377
RI 95 Avg. Wt/Calf: 99 / 3
Age / Calves 5j.4m. / 3MULTIPLE SIRES - - MS
0135431172 - 01-JAN-40 -%SANDSPRUIT GC 090179 - B
0070305750 - 16-NOV-09 0%AFC 35 ICP -
RI 95 Avg. Wt/Calf: 110 / 1
Age / Calves 2j.10m. / 1LASATER 4248 4248 - SP
0066097965 - 06-AUG-04 0%WO WO 010181 - SP
0048719033 - 10-JUN-01 3%MULTIPLE SIRES - - MS
0135431172 - 01-JAN-40 -%GC 02 38 GC 020038 - A
0061236170 - 23-JUL-02 0%- - - - -
- - - - - -%- - - - -
- - - - - -%MULTIPLE SIRES - - MS
0135431172 - 01-JAN-40 -%GC 02 11 GC 020011 - A
0061236592 - 06-JUL-02 0%

Publication Date	CALVING EASE	MILK	CALF GRWTH	MAINTENANCE	GROWTH TEST						FERTILITY			COW VALUE	GROWTH VALUE	PRODUCTION VALUE
28-JUL-20	★★★	★★★	★★★	★★★							★★	80	30	★★		
Selection V.	105 ₅₈	103 ₃₈	92 ₅₉	107 ₁₄							AFC	ICP				
Birth wght	Birth Mat	Milk	Wean wght	Post wean	Mature wght	ADG	Kleiber	FCR	Length	Height	SC					
BV Ind	105	97	103	92	92	94	94	-	97	101	96	77	79	82 ₃₆	-	-
Estimated BV	-36 ₆₀	-26 ₃₇	-9 ₃₈	2.6 ₆₉	3.2 ₆₇	-1 ₁₄	7 ₁₅	22 ₁₅	-	3 ₁₆	1 ₁₇	5 ₁₈	15.8 ₃₁	-2 ₂₀		
Measurements	33			227 (102)	266 (98)	428 (103)	-	-	-	-	-	-	-			

Semen donor: No

Tests: -

BUL	SKRT	VVO	GDT Ind T	Kond ind	Besp ind	Temp ind	Haar ind	Ekon ind
CC170036	40	17.88	101	101	100	137	110	94

Opmerking: Bul met goeie breedte, lengte en bespiering. WO100299 kleinseun.

LOT 23

0615855, SANDSPRUIT BEEFMASTERS, POSBUS 2468, LADYSMITH, 3370, (T)083-631 3790



SA STAMBOEK
STUD BOOK

Ident. nommer Geslag Afdeling

Reg. nommer

Geboorte Datum

SANDSPRUIT

CC 170196

MANLIK B

0088386495

01-AUG-17

CC170196

DNS: ZOBOS20-05023

DNA Profiel: ☒

SANDSPRUIT CC 170196 - B
0088386495 - 01-AUG-17 0%

SANDSPRUIT CC 130125 - C
0079181392 - 06-AUG-13 0%

OVERSKAP GEVERIFIEER

DNS: SIRE
GENOMIES:



SANDSPRUIT GC 090028 - A
0070304548 - 30-APR-09 0%

OEK - TPK 361
RI 117 Gem SI/Kalf: 101 / 4
Oud. / Kalwers 10j.3m. / 8

WO WO 100299 - SP
0072433204 - 29-SEP-10 0%

SANDSPRUIT GC 100090 - B
0072745813 - 08-AUG-10 0%

OEK 36 TPK 546
RI 83 Gem SI/Kalf: 102 / 3
Oud. / Kalwers 5j.11m. / 3

MULTIPLE SIRES - - MS
0135431172 - 01-JAN-40 -%

GC99101 GC 990101 - A
0064340300 - 10-JUL-99 0%

OEK - TPK 423
RI 103 Gem SI/Kalf: 97 / 6
Oud. / Kalwers 12j.11m. / 6

LASATER 4248 4248 - SP

0066097965 - 06-AUG-04 0%

WO WO 010181 - SP
0048719033 - 10-JUN-01 3%

MULTIPLE SIRES - - MS
0135431172 - 01-JAN-40 -%

GC 02 52 GC 020052 - A
0061236311 - 06-AUG-02 0%

GC99101 GC 990101 - A
0064340300 - 10-JUL-99 0%

GC99101 GC 990101 - A
0064340300 - 10-JUL-99 0%

GC99101 GC 990101 - A
0064340300 - 10-JUL-99 0%

Publikasie Datum 28-JUL-20	KALF GEMAK ★★★★	MELK ★★★	KALFGROEI ★★★	ONDERHOUD ★★★	GROEI TOETS						VRUGBAARHEID ★★			KOEI WAARDE	GROEI WAARDE	PRODUKSIE WAARDE
Seleksie W.	112 ⁵⁹	94 ⁴⁴	96 ⁶¹	101 ¹⁴							89 ²⁹					
	Geb gew	Geb Mat	Melk	Speen gew	Naspeen	Volw. gewig	GDT	Kleiber	VOV	Lengte	Hoogte	SO	OEK	TKP		
TW Ind	110	102	94	96	96	98	93	92	-	95	98	91	88	87	85 ³⁸	-
Beraamde TW	-74 ⁶²	.09 ⁴³	-1.3 ⁴⁴	4.5 ⁶¹	5.9 ⁵⁸	3.1 ⁴	3.17	19.17	-	1 ¹⁸	-1.19	2.8 ¹⁸	7.8 ²⁹	-1.7 ¹⁷		
Metings	30			221 (103)	312 (107)	411 (106)	-	-	-	-	-	-	-	-		

Semen skenker: Nee
Toets: -

BUL	SKRT	VVO	GDT Ind T	Kond ind	Besp ind	Temp ind	Haar ind	Ekon ind
CC170196	46	16.06	101	108	102	137	94	103

Opmerking : Bul met goeie breedte, lengte en bespierung. WO100299 kleinseun.

LOT 24

0615855, SANDSPRUIT BEEFMASTERS, POSBUS 2468, LADYSMITH, 3370, (T)083-631 3790



SA STAMBOEK
STUD BOOK

Ident. number Sex Section

Reg. number

Birth Date

SANDSPRUIT

CC 170119

MALE B

0086681400

16-SEP-17

CC170119

DNA: ZOBOS20-05000

DNA Profiel: ☒

SANDSPRUIT CC 170119 - B
0086681400 - 16-SEP-17 0%

SANDSPRUIT CC 120010 - B
0076936194 - 15-JUN-12 0%

PARENTAGE VERIFIED

DNA: SIRE
GENOMIC:



SANDSPRUIT GC 070167 - A
0072592678 - 15-JUL-07 0%

AFC - ICP 364
RI 116 Avg. WI/Calf: 98 / 8
Age / Calves 11j.1m. / 9

MULTIPLE SIRES - - MS
0135431172 - 01-JAN-40 -%

SANDSPRUIT GC 060106 - B
0065065039 - 15-SEP-06 0%

AFC 37 ICP 461
RI 91 Avg. WI/Calf: 104 / 5
Age / Calves 8j.2m. / 5

MULTIPLE SIRES - - MS
0135431172 - 01-JAN-40 -%

MULTIPLE SIRES - - MS
0135431172 - 01-JAN-40 -%

MULTIPLE SIRES - - MS
0135431172 - 01-JAN-40 -%

Avg. WI/Calf: -

MULTIPLE SIRES - - MS
0135431172 - 01-JAN-40 -%

MULTIPLE SIRES - - MS
0135431172 - 01-JAN-40 -%

GC97130 GC 970130 - A
0064340086 - 10-JUL-97 0%

MULTIPLE SIRES - - MS
0135431172 - 01-JAN-40 -%

MULTIPLE SIRES - - MS
0135431172 - 01-JAN-40 -%

MULTIPLE SIRES - - MS
0135431172 - 01-JAN-40 -%

Publication Date 28-JUL-20	CALVING EASE ★★★★	MILK ★★★★	CALF GRWTH ★★★	MAINTENANCE	GROWTH TEST						FERTILITY ★★★			COW VALUE	GROWTH VALUE	PRODUCTION VALUE
Selection V.	103 ⁵⁸	110 ⁴⁴	89 ⁵⁹	-							90 ²⁵					
	Birth wght	Birth Mat	Milk	Wean wght	Post wean	Mature wght	ADG	Kleiber	FCR	Length	Height	SC	AFC	ICP		
BV Ind	104	95	110	89	91	-	82	85	-	83	88	88	92	85		
Estimated BV	-25 ⁶¹	.3 ⁴¹	2.7 ⁴⁴	1.3 ⁵⁹	3 ⁶⁴	-	-30 ⁷	7 ⁷	-	-10 ⁸	-6 ⁹	1 ⁸	4.9 ²⁵	-1.3 ¹⁰		
Measurements	35			164 (94)	339 (103)	400 (100)	-	-	-	-	-	-	-	-		

Semen donor: No
Toets: -

BUL	SKRT	VVO	GDT Ind T	Kond ind	Besp ind	Temp ind	Haar ind	Ekon ind
CC170119	39	13.33	96	108	106	109	79	106

Opmerking : Poena. Lewendige klipharde bul. Goeie bespierung.

LOT 25
M

 Naam:
GC17-0117

 Ident. Nummer:
GC170117
Bul

 Reg. Nummer:
008681044

 Afdeling:
B

 Geboorte Datum:
31/10/17

 Kleur:
Rooi

 Vaar: **MULTISIRE**

P.G. Vaar:

P.G. Moer:

Gem TKP: - (-)

OEK: -

Moer:

GC09-0022 - 01/09/09
GC090022 0075883983

Kalwings: 05/12, 05/13, 05/14, 05/15, 05/16, 10/17, 11/18

M.G. Vaar:

M.G. Moer:

Gem TKP: - (-)

OEK: -

Gem TKP: 394 (7)

OEK: 32 (7)

	Geboorte	Speen (205)	12M	18M	GDT	GDO	VOV	SD	L:H	Fase
Prestasie	31	237	302	401				427		B
Indekse		99	101	101						
Tydgemote		5	20	15						
Teeltwaardes - direk	-0.75 (53)	-0.6 (51)	-0.3 (48)	-1.0 (49)	- (-)					
Teeltwaardes - maternaal	0.11 (35)	1.5 (36)								

Teeltwaardes - 02/2 020			
VOV	- (-)	Kalf Temp	- (-)
Klb	- (-)	Volw Gew	- (-)
SD	- (-)	Voer Wins	- (-)
Lengte	- (-)	Hoogte	- (-)

Opmerkings: Bles bul met baie kapasiteit. Skrotum omtrek van 42cm.

Veldbuldata:							
VVO	GDT(T)Ind	Kond Ind	Besp Ind	Skrt Ind	Temp Ind	Haar Ind	Ekon
8.12	99	90	105	102	110	87	106

LOT 26
M

 Naam:
GC17-0079

 Ident. Nummer:
GC170079
Bul

 Reg. Nummer:
008663843

 Afdeling:
B

 Geboorte Datum:
02/10/17

 Kleur:
Rooi

 Vaar: **MULTISIRE**

P.G. Vaar:

P.G. Moer:

Gem TKP: - (-)

OEK: -

Moer:

GC13-0032 - 14/05/13
BMAFGC130032 0078169950

Kalwings: 08/16, 10/17, 08/18

M.G. Vaar:

M.G. Moer:

GC08-0510 - 01/09/08
GC080510 0075857854

Gem TKP: 398 (6)

OEK: 31 (6)

Gem TKP: 350 (3)

OEK: 39 (3)

	Geboorte	Speen (205)	12M	18M	GDT	GDO	VOV	SD	L:H	Fase
Prestasie	31	249	303	400				426		B
Indekse		101	101	100						
Tydgemote		32	20	15						
Teeltwaardes - direk	-0.31 (54)	0.3 (52)	-0.1 (26)	0.0 (28)	- (-)					
Teeltwaardes - maternaal	0.22 (31)	2.2 (33)								

Teeltwaardes - 02/2 020			
VOV	- (-)	Kalf Temp	- (-)
Klb	- (-)	Volw Gew	- (-)
SD	- (-)	Voer Wins	- (-)
Lengte	- (-)	Hoogte	- (-)

Opmerkings: Bul met baie diepte, goeie haarkwaliteit en goeie temperament. Skrotum omtrek van 43cm.

BUL	SKRT	VVO	GDT Ind T	Kond ind	Besp ind	Temp ind	Haar ind	Ekon ind
GC170079	43	*	*	*	*	*	*	*

Opmerking: Bul met baie diepte, goeie haarkwaliteit en goeie temperament.



VEILINGSKATALOGUS

Amakosi Beefmasters

Datum: 18 Aug 2020

LOT 27

M

 Naam:
GC17-0010

 Ident. Nummer:
GC170010
Bul

 Reg. Nummer:
000876541

 Afdeling:
Comm

 Geboorte Datum:
21/07/17

 Kleur:
Rooi

Vaar: MULTISIRE

P.G. Vaar:

P.G. Moer:

Gem TKP: - (-)

OEK: -

Moer:

Kalwings:

M.G. Vaar:

M.G. Moer:

Gem TKP: - (-)

OEK: -

Gem TKP: - (-)

OEK: -

	Geboorte	Speen (295)	12M	18M	GDT	GDO	VOV	SO	L:H	Fase
Prestasie	34	255	295	325				420		B
Indekse		97	99	98						
Tydenote		20	2	22						
Teeltwaardes - direk	- (-)	- (-)	- (-)	- (-)	- (-)					
Teeltwaardes - matemaal	- (-)	- (-)								

Teeltwaardes - 01/1 980			
VOV	- (-)	Kalf Temp	- (-)
Klb	- (-)	Volw Gew	- (-)
SO	- (-)	Voer Wins	- (-)
Lengte	- (-)	Hoogte	- (-)

Opmerkings: Bul met 'n baie sterk kop. Baie goed in die veldfase gevaar. Skrotum omtrek van 39cm.

Veldbuldata:							
VO	GDT(T)Ind	Kond Ind	Besp Ind	Skrt Ind	Temp Ind	Haar Ind	Ekon
7.14	121	112	118	102	57	73	132

LOT 28

0615855, SANDSPRUIT BEEFMASTERS, POSBUS 2468, LADYSMITH, 3370, (T)083-631 3790



SA STAMBOEK

Ident. nummer

Geslag

Afdeling

Reg. nummer

Geboorte Datum

SANDSPRUIT

CC 170149

MANLIK B

0086681483

25-OCT-17

CC170149

DNS: C18-15171

DNA Profiel: ☒
 SANDSPRUIT CC 170149 - B
0086681483 - 25-OCT-17

 SANDSPRUIT CC 140065 - C
0081266801 - 09-OCT-14

QUERSKAP GEVERIFIEER

 DNS: SIRE
GENOMIES:

 SANDSPRUIT GC 080231 - A
0072800238 - 01-JUN-08

 OEK - TKP 394
RI 109 Gem SI/Kalf: 96 / 7
Oud. / Kalwers 1fj.11m. / 9

 WO WO 100299 - SP
0072433204 - 29-SEP-10

 LASATER 4248 4248 - SP
0066097965 - 06-AUG-04

 SANDSPRUIT GC 100219 - B
0073378010 - 01-SEP-10

 WO WO 010181 - SP
0048719033 - 10-JUN-01

 OEK 35 TKP 399
RI 100 Gem SI/Kalf: 103 / 3
Oud. / Kalwers 5fj.1m. / 3

 MULTIPLE SIREs - MS
0135431172 - 01-JAN-40

 SANDSPRUIT GC 07009A - A
0072592652 - 15-JUL-07

Gem SI/Kalf: -

Publikasie Datum 28-JUL-20	KALF GEMAK ★★★	MELK ★★	KALFGROEI ★★★	ONDERHOUD ★★★		GROEI TOETS						VRUGBAARHEID ★★★		KOEI WAARDE	GROEI WAARDE	PRODUKSIE WAARDE
Seleksie W.	108 ⁵⁸	87 ⁴⁵	104 ⁸⁰	99 ¹⁴								92 ²⁷		87 ³⁷	- -	- -
	Geb gew	Geb Mat	Melk	Speen gew	Naspeen	Volw. gewig	GDT	Kleiber	VOV	Lengte	Hoogte	SO	OEK			
TW Ind	108	93	87	104	104	100	100	101	-	100	106	100	91	91		
Beraamde TW	-59 ⁶¹	37 ⁴²	-3.3 ⁴⁵	8.2 ⁸⁰	11.2 ⁴²	5 ¹⁴	26 ¹⁵	33 ¹⁵	-	5 ¹⁸	3 ¹⁶	7.3 ¹⁸	6 ²⁵	-2.4 ¹⁵		
Metings	34			171 (100)	400 (98)	439 (99)	-	-	-	-	-	-			Semen skenker: Nee	
															Teater: -	

 Semen skenker: Nee
Toetse: -

BUL	SKRT	VVO	GDT Ind T	Kond ind	Besp ind	Temp ind	Haar ind	Ekon ind
CC170149	44	16.66	90	94	102	137	47	95

Opmerking: Lekker Indikus bul met baie goeie diepte. WO100299 kleinseun.

LOT 29



SA STAMBOEK
STUD BOOK

0615855, SANDSPRUIT BEEFMASTERS, POSBUS 2468, LADYSMITH, 3370, (T)083-631 3790



Ident. number Sex Section Reg. number Birth Date
SANDSPRUIT CC 170168 MALE C 0088386016 01-AUG-17

DNA: ZOBOS20-05014

DNA Profile: ☒

SANDSPRUIT CC 170168 - C
0088386016 - 01-AUG-17 0%

SANDSPRUIT CC 140065 - C
0081266801 - 09-OCT-14 0%

PARENTAGE VERIFIED

DNA: SIRE
GENOMIC:



SANDSPRUIT GC 100150 - B
0072769623 - 30-AUG-10 0%

AFC 35 ICP 348
RI 112 Avg. Wt/Calf: 99 / 5
Age / Calves 8j.8m. / 7

WO WO 100299 - SP
0072433204 - 29-SEP-10 0%

SANDSPRUIT GC 100219 - B
0073378010 - 01-SEP-10 0%

AFC 35 ICP 399
RI 100 Avg. Wt/Calf: 103 / 3
Age / Calves 5j.1m. / 3

MULTIPLE SIREs - - MS
0135431172 - 01-JAN-40 -%

SANDSPRUIT GC 050129 - A
0068608686 - 15-SEP-05 0%

AFC - ICP 380
RI 113 Avg. Wt/Calf: 94 / 2
Age / Calves 4j.11m. / 2

LASATER 4248 4248 - SP

0066097965 - 06-AUG-04 0%

WO WO 010181 - SP

0048719033 - 10-JUN-01 3%

MULTIPLE SIREs - - MS

0135431172 - 01-JAN-40 -%

SANDSPRUIT GC 07009A - A

0072592652 - 15-JUL-07 0%

Publication Date	CALVING EASE	MILK	CALF GRWTH	MAINTENANCE	GROWTH TEST						FERTILITY			COW VALUE	GROWTH VALUE	PRODUCTION VALUE
28-JUL-20	★★★★	★★★★	★★★★	★★★★							★★★★					
Selection V.	111 ⁵⁹	101 ⁴⁴	97 ⁶¹	100 ¹⁴							94 ³¹					
Birth wght	110	94	101	97	97	97	98	97	97	100	104	96	93	97	94 ³⁸	
Estimated BV	-77 ⁶²	-34 ⁴²	-4 ⁴⁴	5.1 ⁶¹	6.7 ⁵⁵	3 ¹⁴	18 ¹⁶	27 ¹⁶	-	5 ¹⁷	2 ¹⁷	5.2 ¹⁷	4.4 ³³	-3.4 ²⁰		
Measurements	30			212 (98)	312 (107)	411 (106)	-	-	-	-	-	-	-	-		
														Semen donor: No		
														Teelc: -		

BUL	SKRT	VVO	GDT Ind T	Kond ind	Besp ind	Temp ind	Haar ind	Ekon ind
CC170168	38	18.76	91	101	90	137	63	93

Opmerking : Bul met baie goeie lengte. WO100299 kleinseun.

LOT 30



SA STAMBOEK
STUD BOOK

0615855, SANDSPRUIT BEEFMASTERS, POSBUS 2468, LADYSMITH, 3370, (T)083-631 3790



Ident. nommer Geslag Afdeling Reg. nommer Geboorte Datum
SANDSPRUIT CC 170154 MANLIK C 0086784477 25-OCT-17

DNS: ZOBOS20-05008

DNA Profiel: ☒

SANDSPRUIT CC 170154 - C
0086784477 - 25-OCT-17 0%

SANDSPRUIT CC 140034 - C
0081261984 - 24-SEP-14 0%

OVERSKAP GEVERIFIEER

DNS: SIRE
GENOMIES:



SANDSPRUIT CC 120087 - B
0076935717 - 15-SEP-12 0%

OEK 35 TKP 376
RI 106 Gem SI/Kalf: 103 / 3
Oud. / Kalwers 7j.0m. / 5

SANDSPRUIT GC 060026 - B
0064059876 - 15-AUG-06 0%

SANDSPRUIT GC 100248 - B
0073378275 - 15-SEP-10 0%

OEK 35 TKP 392
RI 103 Gem SI/Kalf: 93 / 4
Oud. / Kalwers 6j.1m. / 4

MULTIPLE SIREs - - MS
0135431172 - 01-JAN-40 -%

SANDSPRUIT GC 070155 - A
0072592520 - 15-JUL-07 0%

OEK - TKP 393
RI 110 Gem SI/Kalf: 103 / 7
Oud. / Kalwers 11j.9m. / 9

MULTIPLE SIREs - - MS

0135431172 - 01-JAN-40 -%

GC 02 23 GC 020023 - A

0061236717 - 11-JUL-02 0%

MULTIPLE SIREs - - MS

0135431172 - 01-JAN-40 -%

SANDSPRUIT GC 070172 - A

0072592751 - 15-JUL-07 0%

MULTIPLE SIREs - - MS

0135431172 - 01-JAN-40 -%

Publikasie Datum	KALF GEMAK	MELK	KALFGROEI	ONDERHOUD	GROEI TOETS						VRUGBAARHEID			KOEI WAARDE	GROEI WAARDE	PRODUKSIE WAARDE
28-JUL-20	★★★★	★★★★	★★★★								★★★★					
Seleksie W.	111 ⁵⁶	91 ⁴¹	93 ⁵⁹	-							98 ²⁹					
Geb gew	111	91	93	93	93	93	93	93	93	93	93	90	95	112		
Beraamde TW	-82 ⁶⁰	-44 ³⁷	-2.2 ⁴¹	3 ⁵⁹	4 ⁵⁵	-	-11 ¹⁸	12 ¹⁸	-3 ²⁰	-4 ²⁰	2.4 ²⁰	2.5 ³³	-6.3 ¹⁵			
Metings	32			244 (98)	400 (98)	433 (97)	-	-	-	-	-	-	-			
														Semen skenker: Nee		
														Teelc: -		

BUL	SKRT	VVO	GDT Ind T	Kond ind	Besp ind	Temp ind	Haar ind	Ekon ind
CC170154	45	10.25	125	115	102	82	79	119

Opmerking : Lang, diep bul. GC060026 kleinseun.

LOT 31

M

Naam:
GC17-0109Ident. Nummer:
GC170109
BulReg. Nummer:
008663867Afdeling:
BGeboorte Datum:
20/10/17Kleur:
Rooi

Vaar: MULTISIRE

P.G. Vaar:

P.G. Moer:

Gem TKP: - (-)

OEK: -

Moer: GC14-0139 - 09/09/14
GC140139 0080500218
Kalwings: 10/17, 10/18

M.G. Vaar:

M.G. Moer:

GC070211 - 15/07/07
GC070211 0072592363

Gem TKP: 371 (2)

OEK: 37 (2)

Gem TKP: 406 (5)

OEK: 32 (5)

	Geboorte	Speen (205)	12M	18M	GDT	GDO	VOV	SO	LH	Fase
Prestasie	31	236	303	403				411		B
Indelse		99	101	101						
Tydgenote		5	20	15						
Teeltwaardes - direk	-0.25 (53)	-0.7 (52)	-0.6 (47)	-1.2 (50)	- (-)					
Teeltwaardes - matemaal	0.37 (28)	1.9 (31)								

Teeltwaardes - 02/2 020			
VOV	- (-)	Kalf Temp	- (-)
Klb	- (-)	Volw Gew	- (-)
SO	- (-)	Voer Wins	- (-)
Lengte	- (-)	Hoogte	- (-)

Opmerkings: Groot-raam bul met goeie lengte. Skrotum omtrek van 41cm.

Veldbuldata:							
VVO	GDT(T)Ind	Kond Ind	Besp Ind	Skrt Ind	Temp Ind	Haar Ind	Ekon
7.54	109	90	89	91	110	87	101

AMAKOSI



VEILINGSKATALOGUS

Amakosi Beefmasters

Datum: 18 Aug 2020

LOT 32

M

Naam:
GC17-0075Ident. Nummer:
GC170075
BulReg. Nummer:
008663842Afdeling:
BGeboorte Datum:
20/09/17Kleur:
Rooi

Vaar: MULTISIRE

P.G. Vaar:

P.G. Moer:

Gem TKP: - (-)

OEK: -

Moer: GC07-0219 - 30/07/07
GC070219 0072592165
Kalwings: 04/10, 08/11, 08/12, 08/13, 09/14, 11/15, 10/16, 09/17, 10/18

M.G. Vaar:

M.G. Moer:

Gem TKP: 391 (9)

OEK: 32 (9)

Gem TKP: - (-)

OEK: -

	Geboorte	Speen (205)	12M	18M	GDT	GDO	VOV	SO	LH	Fase
Prestasie	32	248	292	381				445		B
Indelse		101	100	100						
Tydgenote		32	20	22						
Teeltwaardes - direk	-0.40 (56)	2.4 (55)	3.4 (51)	4.0 (52)	-15 (7)					
Teeltwaardes - matemaal	0.50 (38)	1.4 (41)								

Teeltwaardes - 02/2 020			
VOV	- (-)	Kalf Temp	- (-)
Klb	15 (7)	Volw Gew	- (-)
SO	0.9 (9)	Voer Wins	- (-)
Lengte	-5 (8)	Hoogte	-5 (9)

Opmerkings: Lang bul met baie kapasiteit. Skrotum omtrek 39cm.

BUL	SKRT	VVO	GDT Ind T	Kond ind	Besp ind	Temp ind	Haar ind	Ekon ind
GC170075	43	*	*	*	*	*	*	*

Opmerking: Lang bul met baie kapasiteit.

LOT 33

M

Naam:
GC17-0036Ident. Nummer:
170036GC
BulReg. Nummer:
404123456Afdeling:
CommGeboortedatum:
18/07/17Kleur:
Rooi

Vaar: MULTISIRE

P.G. Vaar:

P.G. Moer:

Gem TKP: - (-)

OEK: -

Moer: GC14-0030 - 15/08/14
GC140030 4041968514
Kalwings: 07/17

M.G. Vaar:

M.G. Moer:

GC120318 - 02/04/12
GC120318

Gem TKP: 0 (1)

OEK: 35 (1)

Gem TKP: 0 (1)

OEK: 28 (1)

	Geboorte	Speen (205)	12M	18M	GDT	GDO	VOV	SO	L:H	Fase
Prestasie	35	244	269	509				431		B
Indekse		101	102	100						
Tydgenote		9	8	11						
Teeltwaardes - direk	- (-)	- (-)	- (-)	- (-)	- (-)					
Teeltwaardes - matemaal	- (-)	- (-)								

Teeltwaardes - 07/2 017

VOV	- (-)	Kalf Temp	- (-)
Klb	- (-)	Volk Gew	- (-)
SO	- (-)	Voer Wins	- (-)
Lengte	- (-)	Hoogte	- (-)

BUL	SKRT	VVO	GDT Ind T	Kond ind	Besp ind	Temp ind	Haar ind	Ekon ind
GC170036	43	*	*	*	*	*	*	*

Opmerking : Kommersieël. Bul met baie lengte, dra baie vleis.

LOT 34

0615855, SANDSPRUIT BEEFMASTERS, POSBUS 2468, LADYSMITH, 3370, (T)083-631 3790



SA STAMBOEK

Ident. number Sex Section

Reg. number

Birth Date

SANDSPRUIT

CC 170193

MALE

B

0088385786

01-AUG-17

CC170193

DNA: ZOBOS20-05020

DNA Profile: ☒SANDSPRUIT CC 170193 - B
0088385786 - 01-AUG-17 0%SANDSPRUIT CC 150065 - B
0084394238 - 30-AUG-15 0%

PARENTAGE VERIFIED

DNA: SIRE
GENOMIC:SANDSPRUIT GC 080214 - A
0072799323 - 01-JUN-08 0%AFC - ICP 427
RI 102 Avg. Wt/Calf: 101 / 6
Age / Calves 10j.4m. / 7SANDSPRUIT CC 110057 - B
0074935354 - 08-AUG-11 0%SANDSPRUIT GC 07032A - A
0072592728 - 15-JUL-07 0%AFC - ICP 453
RI 96 Avg. Wt/Calf: 105 / 5
Age / Calves 8j.1m. / 5

MULTIPLE SIRES - - MS

0135431172 - 01-JAN-40 -%

SANDSPRUIT GC 080035 - B

0068605039 - 05-OCT-08 0%

MULTIPLE SIRES - - MS

0135431172 - 01-JAN-40 -%

Avg. Wt/Calf: -

Publication Date 28-JUL-20	CALVING EASE ★★★★		MILK ★★★★	CALF GRWTH ★★★★	MAINTENANCE		GROWTH TEST					FERTILITY ★★★★			COW VALUE	GROWTH VALUE	PRODUCTION VALUE
Selection V.	114 ⁵⁷	103 ⁴²	95 ⁵⁸	-	-	96 ²⁰											
	Birth wght	Birth Mat	Milk	Wean wght	Post wean	Mature wght	ADG	Kleiber	FCR	Length	Height	SC	AFC	ICP			
BV Ind	115	91	103	95	94	-	97	98	-	97	104	98	95	95	-	-	-
Estimated BV	-1.09 ⁸⁰	.44 ⁴⁰	.9 ⁴²	4 ⁵⁸	4.8 ⁵⁵	-	16 ¹⁰	28 ¹⁰	-	3 ¹²	2 ¹³	6.2 ¹²	2.8 ¹⁶	-3.2 ⁵			
Measurements	30			212 (98)	291 (99)	378 (97)	-	-	-	-	-	-			Semen donor: No Tests: -		

Semen donor: No
Tests: -

BUL	SKRT	VVO	GDT Ind T	Kond ind	Besp ind	Temp ind	Haar ind	Ekon ind
CC170193	42	9.14	134	101	96	137	63	115

Opmerking : Bul met baie goeie breedte.

LOT 35



0615855, SANDSPRUIT BEEFMASTERS, POSBUS 2468, LADYSMITII, 3370, (T)083-631 3790



SA STAMBOEK
STUD BOOK

Ident. nommer Geslag Afdeling

Reg. nommer

Geboorte Datum

SANDSPRUIT

CC 170153

MANLIK C

0086681525

25-OCT-17

CC170153

DNS: ZOBOS20-05007

DNA Profiel: ☒

SANDSPRUIT CC 170153 - C
0086681525 - 25-OCT-17

SANDSPRUIT CC 140269 - B
0085242287 - 15-AUG-14

OUERSKAP GEVERIFIEER

DNS: SIRE
GENOMICS:

SANDSPRUIT GC 100162 - B
0072617582 - 15-SEP-10

OEK 35 TPK 471
RI 93 Gem SI/Kalf: 103 / 4
Oud. / Kalwers 8j.0m. / 5

SANDSPRUIT CC 110123 - B
0074933706 - 04-OCT-11

SANDSPRUIT GC 07056A - A
0072592553 - 15-JUL-07

OEK - TPK 374
RI 114 Gem SI/Kalf: 97 / 8
Oud. / Kalwers 11j.3m. / 9

SANDSPRUIT GC 060040 - B
0064059983 - 01-SEP-06

SANDSPRUIT GC 040036 - A
0062931050 - 28-JUL-04

OEK - TPK 366
RI 116 Gem SI/Kalf: 95 / 8
Oud. / Kalwers 10j.3m. / 8

SANDSPRUIT GC 080015 - B

0068609155 - 05-SEP-08

GC 02 19 GC 020019 - A

0061236675 - 09-JUL-02

MULTIPLE SIREs - MS

0135431172 - 01-JAN-40

MULTIPLE SIREs - MS

0135431172 - 01-JAN-40

GC 03 34 GC 030034 - A

0062930813 - 19-JUL-03

MULTIPLE SIREs - MS

0135431172 - 01-JAN-40

Publikasie Datum 28-JUL-20	KALF GEMAK ★★★★	MELK ★★	KALFGROEI ★★★★	ONDERHOUD ★★★★	GROEI TOETS						VRUGBAARHEID ★★★			KOEI WAARDE	GROEI WAARDE	PRODUKSIE WAARDE	
Seleksie W.	117 ₅₉	84 ₄₄	105 ₅₁	98 ₅							96 ₂₈						
	Geb gew	Geb Mat	Melk	Speen gew	Naspeen	Volw. gewig	GDT	Kleiber	VOV	Lengte	Hoogte	SO	OEK	TKP	★★★★		
TW Ind	116	95	84	105	107	101	97	94	-	104	107	105	98	90	92 ₃₆	-	-
Beraamde TW	-1.17 ₈₂	.3 ₄₁	-3.9 ₄₄	9.1 ₆₁	13.3 ₅₇	5 ₅	16 ₁₉	22 ₁₉	-	8 ₂₂	4 ₂₄	9.5 ₂₃	4 ₂₉	-2.3 ₁₅			
Metings	30			277 (113)	445(110)	493(112)	-	-	-	-	-	-			Semen skenker: Nee		

Semen skenker: Nee

Toetse: -

BUL	SKRT	VVO	GDT Ind T	Kond ind	Besp ind	Temp ind	Haar ind	Ekon ind
CC170153	44	14.22	139	115	104	109	126	117

Opmerking : Medium raam bul met goeie diepte.

LOT 36



0615855, SANDSPRUIT BEEFMASTERS, POSBUS 2468, LADYSMITII, 3370, (T)083-631 3790



SA STAMBOEK
STUD BOOK

Ident. number Sex Section

Reg. number

Birth Date

SANDSPRUIT

CC 170100

MALE C

0090411562

30-AUG-17

CC 170100

DNA: ZOBOS20-04995

DNA Profile: ☒

SANDSPRUIT CC 170100 - C
0090411562 - 30-AUG-17

SANDSPRUIT CC 120006 - C
0076936236 - 15-JUN-12

PARENTAGE VERIFIED

DNA: SIRE
GENOMIC:

SANDSPRUIT CC 130047 - B
0079179388 - 09-SEP-13

AFC 35 ICP 372
RI 103 Avg. Wt/Calf: 97 / 2
Age / Calves 4j.11m. / 3

SANDSPRUIT GC 050053 - B
0064060676 - 19-SEP-05

SANDSPRUIT GC 080027 - B
0068604982 - 04-OCT-08

AFC 33 ICP 427
RI 100 Avg. Wt/Calf: 102 / 3
Age / Calves 5j.1m. / 3

MULTIPLE SIREs - MS
0135431172 - 01-JAN-40

SANDSPRUIT GC 080230 - A
0072800220 - 01-JUN-08

AFC - ICP 354
RI 119 Avg. Wt/Calf: 99 / 5
Age / Calves 7j.2m. / 5

MULTIPLE SIREs - MS

0135431172 - 01-JAN-40

GC 02 53 GC 020053 - A

0061236329 - 15-OCT-02

MULTIPLE SIREs - MS

0135431172 - 01-JAN-40

GC 02 05 GC 020005 - A

0061236535 - 03-JUL-02

MULTIPLE SIREs - MS

0135431172 - 01-JAN-40

MULTIPLE SIREs - MS

0135431172 - 01-JAN-40

MULTIPLE SIREs - MS

0135431172 - 01-JAN-40

MULTIPLE SIREs - MS

0135431172 - 01-JAN-40

Publication Date 28-JUL-20	CALVING EASE ★★★		MILK ★★★	CALF GRWTH ★★★☆	MAINTENANCE		GROWTH TEST						FERTILITY ★★★			COW VALUE	GROWTH VALUE	PRODUCTION VALUE
Selection V.	105 ₄₂	101 ₃₉		92 ₅₇	-	-	ADG	Kleiber	FCR	Length	Height	SC	91 ₂₆	AFC	ICP			
	Birth wght	Birth Mat	Milk	Wean wght	Post wean	Mature wght												
BV Ind	106	92	101	92	93	-	85	88	-	85	89	90	93	92	-	-		
Estimated BV	-.43 ₄₄	.39 ₃₁	.4 ₃₆	2.5 ₅₇	3.9 ₅₂	-	-21 ₅	12 ₅	-	-7 ₆	-6 ₆	2.2 ₈	4.3 ₂₈	-2.6 ₁₃				
Measurements	-			215 (94)	306 (96)	373 (98)	-	-	-	-	-	-			Semen donor: No Tests: -			

Semen donor: No

Tests: -

BUL	SKRT	VVO	GDT Ind T	Kond ind	Besp ind	Temp ind	Haar ind	Ekon ind
CC170100	38	6.84	149	90	98	82	63	130

Opmerking : Vroegryp bul met goeie diepte.

VEILINGSKATALOGUS

Amakosi Beefmasters

Datum: 18 Aug 2020

LOT 37

M

Naam:
GC17-0048
DNA: Z080520-04952

Ident. Nommer:
GC170048
Bul

Reg. Nommer: **008663819** Afdeling: **B** Geboorte Datum: **30/08/17** Kleur: **Rooi**

Vaar: CC12-0164

P.G. Vaar:

P.G. Moer:

Gem TKP: - (-)

OEK: -

Moer:

GC120004 - 06/03/12
GC120004 0075614602
Kalwings: 09/14, 09/15, 07/16, 08/17

M.G. Vaar:

M.G. Moer:

GC030027 - 17/07/03
GC030027 0062930755

Gem TKP: 360 (4)

OEK: 30 (4)

Gem TKP: 421 (9)

OEK: 36 (9)

	Geboorte	Speen (205)	12M	18M	GDT	GDO	VOV	SO	LH	Fase
Prestasie	31	246	295	382				379		B
Indelise		100	102	101						
Tydgenote		32	5	18						
Teeltwaardes - direk	-0.45 (54)	1.3 (53)	1.0 (50)	1.3 (51)	-4 (7)					
Teeltwaardes - matemaal	0.26 (33)	2.6 (36)								

Teeltwaardes - 02/2 020			
VOV	- (-)	Kalf Temp	- (-)
Klb	17 (7)	Volw Gew	- (-)
SO	2.5 (9)	Voer Wins	- (-)
Lengte	0 (8)	Hoogte	-2 (9)

Opmerking: Donker rooi bul met goeie lengte en diepte. Skrotum omtrek van 41cm.

Veldbuldata:							
VVO	GDT(T)Ind	Kond Ind	Besp Ind	Skt Ind	Temp Ind	Haar Ind	Ekon
11.31	98	108	105	102	110	43	109

LOT 38

M

Naam:
GC17-0012

Ident. Nommer:
17-0012GC
Bul

Reg. Nommer: **404210935** Afdeling: **Comm** Geboorte Datum: **29/06/17** Kleur: **Rooi**

Vaar: MULTISIRE

P.G. Vaar:

P.G. Moer:

Gem TKP: - (-)

OEK: -

Moer:

GC13-0067 - 05/05/13
GC130067 4041969215
Kalwings: 13/15, 13/16, 06/17, 05/18, 05/19, 05/20

M.G. Vaar:

M.G. Moer:

Gem TKP: 326 (6)

OEK: 30 (6)

Gem TKP: - (-)

OEK: -

	Geboorte	Speen (205)	12M	18M	GDT	GDO	VOV	SO	LH	Fase
Prestasie	34	240	262	495				408		B
Indelise		99	97	97						
Tydgenote		9	8	11						
Teeltwaardes - direk	- (-)	- (-)	- (-)	- (-)	- (-)					
Teeltwaardes - matemaal	- (-)	- (-)								

Teeltwaardes - 06/2 017			
VOV	- (-)	Kalf Temp	- (-)
Klb	- (-)	Volw Gew	- (-)
SO	- (-)	Voer Wins	- (-)
Lengte	- (-)	Hoogte	- (-)

Opmerking: Afrika Droughtmaster Tipe. Grootraam bul. Skrotum omtrek 41cm.

Veldbuldata:							
VVO	GDT(T)Ind	Kond Ind	Besp Ind	Skt Ind	Temp Ind	Haar Ind	Ekon
8.58	89	93	96	94	57	73	100

LOT 39

SA STAMBOEK
STUD BOOK

0615855, SANDSPRUIT BEEFMASTERS, POSBUS 2468, LADYSMITH, 3370, (T)083-631 3790

SA STAMBOEK
STUD BOOK

SANDSPRUIT

Ident. nommer

Geslag

Afdeling

Reg. nommer

Geboorte Datum

CC170032

CC 170032

MANLIK C

0086783990

17-MAY-17

DNS: ZOBOS20-04982

DNA Profiel: ☒

SANDSPRUIT CC 170032 - C

0086783990 - 17-MAY-17

SANDSPRUIT CC 130030 - B
0079180113 - 09-SEP-13

0%

OUESKAP GEVERIFIEER

DNS: SIRE

GENOMIES:

SANDSPRUIT CC 120171 - B
0076936103 - 01-NOV-12

0%

OEK 33

RI 97

Oud. / Kalwers

TKP 456

Gem SI/Kalf: 101 / 2

6j.6m. / 4

SANDSPRUIT CC 110057 - B
0074935354 - 08-AUG-11

0%

SANDSPRUIT GC 070216 - A
0072592413 - 15-JUL-07

0%

OEK - TKP 383
RI 112 Gem SI/Kalf: 106 / 3
Oud. / Kalwers 6j.1m. / 3MULTIPLE SIRES -- MS
0135431172 - 01-JAN-40

-%

SANDSPRUIT GC 070159 - A
0072592579 - 15-JUL-07

0%

OEK - TKP 373
RI 114 Gem SI/Kalf: 100 / 4
Oud. / Kalwers 6j.2m. / 4MULTIPLE SIRES -- MS
0135431172 - 01-JAN-40

-%

MULTIPLE SIRES -- MS

0135431172 - 01-JAN-40

-%

SANDSPRUIT GC 080035 - B

0068605039 - 05-OCT-08

0%

MULTIPLE SIRES -- MS

0135431172 - 01-JAN-40

-%

-%

-%

-%

-%

MULTIPLE SIRES -- MS

0135431172 - 01-JAN-40

-%

Publikasie Datum	KALF GEMAK	MELK	KALFGROEI	ONDERHOUD	GROEI TOETS						VRUGBAARHEID			KOEI	GROEI	PRODUKSIE
28-JUL-20	★ ★ ★	★ ★ ★	★ ★ ★								★ ★			WAARDE	WAARDE	WAARDE
Seleksie W.	109 ⁵⁷	97 ³⁵	106 ⁵⁹	-							87 ²⁶					
	Geb gew	Geb Mat	Melk	Speen gew	Naspeen	Volw. gewig	GDT	Kleiber	VOV	Lengte	Hoogte	SO	OEK	TKP		
TW Ind	110	91	97	106	108	-	99	99	-	101	104	99	96	93	-	-
Beraamde TW	-73 ⁸¹	.44 ³⁵	-5 ³⁸	9.6 ⁵⁹	13.8 ⁵⁸	-	23 ⁷	30 ⁷	-	6 ⁹	2 ⁹	6.8 ⁹	2.3 ²⁶	-2.8 ¹⁴	-	-
Metings	32			234 (105)	275 (102)	459 (111)	-	-	-	-	-	-	-	-	-	-

Semen skenker: Nee

Toetse: -

BUL	SKRT	VVO	GDT Ind T	Kond ind	Besp ind	Temp ind	Haar ind	Ekon ind
CC170032	45	16.03	115	108	102	82	47	117

Opmerking : Medium raam bul met goeie lengte en diepte.

LOT 40

SA STAMBOEK
STUD BOOK

0615855. SANDSPRUIT BEEFMASTERS. POSBUS 2468, LADYSMITH, 3370, (T)083-631 3790



KOMMERSIEËL / COMMERCIAL

SANDSPRUIT

Ident. number

Sex

Section

Reg. number

Birth Date

CC170163

CC 170163

MALE

0088557095

17-MAY-17

DNA: -

SANDSPRUIT CC 170163 - B
0088557095 - 17-MAY-17

PARENTAGE VERIFIED

DNA:

GENOMIC:

SANDSPRUIT CC 140067 - B
0081262917 - 09-OCT-14

0%

AFC 31

RI 105

Age / Calves

ICP -

Avg. WI/Kalf: 97 / 1

2j.7m. / 1

MULTIPLE SIRES -- MS
0135431172 - 01-JAN-40

-%

SANDSPRUIT GC 100169 - B
0072617657 - 21-SEP-10

0%

AFC 35 ICP 458
RI 95 Avg. WI/Kalf: 99 / 4
Age / Calves 9j.1m. / 6MULTIPLE SIRES -- MS
0135431172 - 01-JAN-40

-%

LASATER 516 2516 - SP
0039857586 - 01-OCT-91

0%

GC 03 34 GC 030034 - A
0062930813 - 19-JUL-03

0%

Publication Date	CALVING EASE	MILK	CALF GRWTH	MAINTENANCE	GROWTH TEST						FERTILITY			COW VALUE	GROWTH VALUE	PRODUCTION VALUE
28-JUL-20	★ ★ ★	★ ★ ★	★ ★	★ ★ ★							★ ★					
Selection V.	114 ⁴⁸	104 ²⁸	80 ⁵²	121 ⁷							85 ²²					
	Birth wght	Birth Mat	Milk	Wean wght	Post wean	Mature wght	ADG	Kleiber	FCR	Length	Height	SC	AFC	ICP		
BV Ind	112	100	104	80	80	80	80	82	78	82	83	79	101	88	86 ²⁰	-
Estimated BV	-9 ⁵³	.16 ²⁷	1.1 ²⁸	-3.2 ⁵²	-4.4 ⁴⁸	-17 ⁷	-39 ⁹	2 ⁹	18 ⁵	-10 ⁹	-9 ¹⁰	-3.4 ¹⁰	-1.5 ²⁸	-1.9 ¹⁰	-	-
Measurements	30			218 (97)	255 (94)	395 (94)	-	-	-	-	-	-	-	-	-	-

Semen donor: No

Tests: -

BUL	SKRT	VVO	GDT Ind T	Kond ind	Besp ind	Temp ind	Haar ind	Ekon ind
CC170163	36	10.09	101	94	96	82	79	103

Opmerking : Kommesieël. Medium klein raam bul met goeie lengte en breedte.



VEILINGSKATALOGUS

Amakosi Beefmasters

Datum: 18 Aug 2020

LOT 41

M

Naam: GC17-0048

DNA: ZOBOS20-04926

Ident. Nummer: 170048GC
Bul

Reg. Nummer: 404210896

Afdeling: Comm

Geboorte Datum: 04/07/17

Kleur: Rooi

Vaar: C09-0221 - 19/09/09
090221C 0000154681

P.G. Vaar:

P.G. Moer:

Gem TKP: - (-)

OEK: -

Moer: GC13-0184 - 23/09/13
GC130184 4041968399
Kalwings: 05/16, 07/17

M.G. Vaar:

M.G. Moer:

GC130013 - 10/03/11
GC130013 4041967425

Gem TKP: 427 (2)

OEK: 31 (2)

Gem TKP: 326 (3)

OEK: 30 (3)

	Geboorte	Speen (205)	12M	18M	GDT	GDO	VOV	SO	L:H	Fase
Prestasie	34	244	266	522				413		B
Indekse		101	100	102						
Tydgenote		9	8	11						
Teelwaardes - direk	- (-)	- (-)	- (-)	- (-)	- (-)					
Teelwaardes - matemaal	- (-)	- (-)								

Teelwaardes - 07/2 017

VOV	- (-)	Kalf Temp	- (-)
Klb	- (-)	Volw Gew	- (-)
SO	- (-)	Voer Wins	- (-)
Lengte	- (-)	Hoogte	- (-)

Opmerkings: Afrika Droughtmaster Tipe. Poena bul met sterk been en baie breedte. Lewendige temperament. Skrotum omtrek van 42cm.

Veldbuldata:							
VVO	GDT(T)Ind	Kond Ind	Besp Ind	Skrt Ind	Temp Ind	Haar Ind	Ekon
7.18	118	93	90	102	57	146	106

LOT 42

0615855, SANDSPRUIT BEEFMASTERS, POSBUS 2468, LADYSMITH, 3370, (T)083-631 3790



SA STAMBOEK

Ident. nummer

Geslag

Afdeling

Reg. nummer

Geboorte Datum

SANDSPRUIT
CC170104

CC 170104

MANLIK B

0086681343

11-SEP-17

DNS: ZOBOS20-04997

DNA Profiel: ☒

SANDSPRUIT CC 170104 - B
0086681343 - 11-SEP-17

SANDSPRUIT CC 130018 - B
0079179735 - 09-SEP-13

OUERSKAP GEVERIFIEER

DNS: SIRE
GENOMIES:



SANDSPRUIT GC 070180 - A
0072592850 - 15-JUL-07

OEK - TKP 420
RI 104 Gem SI/Kalf: 100 / 7
Oud. / Kalwers 11j.2m. / 8

SANDSPRUIT GC 070065 - B
0066661950 - 08-OCT-07

GC01121 GC 010121 - A
0064340466 - 12-JUL-01

OEK - TKP 363
RI 116 Gem SI/Kalf: 100 / 10
Oud. / Kalwers 14j.1m. / 10

MULTIPLE SIRES - MS
0135431172 - 01-JAN-40

Gem SI/Kalf: -

MULTIPLE SIRES - MS
0135431172 - 01-JAN-40

GC 02 44 GC 020044 - A
0061236238 - 29-JUL-02

Publikasie Datum	KALF GEMAK	MELK	KALFGROEI	ONDERHOUD	GROEI TOETS					VRUGBAARHEID			KOEI WAARDE	GROEI WAARDE	PRODUKSIE WAARDE
28-JUL-20	★★★	★★★	★★★							★★★					
Seleksie W.	108 ₅₅	100 ₄₆	106 ₆₀							105 ₂₃					
	Geb gew	Geb Mat	Melk	Speen gew	Naspeen	Volw. gewig	GDT	Kleiber	VOV	Lengte	Hoogte	SO	OEK	TKP	
TW Ind	108	95	100	106	106	-	98	100	-	98	103	100	104	108	
Beraamde TW	-58 ₆₁	-31 ₄₃	-24 ₆	9.6 ₆₀	13 ₅₅	-	20 ₉	31 ₈	-	3 ₁₁	2 ₁₁	7.2 ₁₁	-3.7 ₁₇	-5.5 ₉	
Metings	32			244 (98)	335(102)	440(111)	-	-	-	-	-	-	-	-	Semen skenker: Nee

BUL	SKRT	VVO	GDT Ind T	Kond ind	Besp ind	Temp ind	Haar ind	Ekon ind
CC170104	45	9.91	139	101	94	109	79	117

Opmerking: Bul met goeie haar en diepte. GC070065 kleinseun.



SA STAMBOEK
STCB BOOK

Ident. number Sex Section Reg. number Birth Date

SANDSPRUIT
CC170160

CC 170160 MALE C

0089502314 25-OCT-17

DNA: ZOBOS20-05011

DNA Profile: ☒

SANDSPRUIT CC 170160 - C
0089502314 - 25-OCT-17 0%

SANDSPRUIT CC 140269 - B
0085242287 - 15-AUG-14 0%

PARENTAGE VERIFIED

DNA: SIRE
GENOMIC:



SANDSPRUIT CC 130024 - B
0079180055 - 09-SEP-13 0%

AFC 38 ICP 348
RI 104 Avg. Wt/Calf: 111 / 2
Age / Calves 6j.0m. / 4

SANDSPRUIT CC 110123 - B
0074933706 - 04-OCT-11 0%

SANDSPRUIT GC 07056A - A
0072592553 - 15-JUL-07 0%

AFC 114 ICP 374
RI Avg. Wt/Calf: 97 / 8
Age / Calves 11j.3m. / 9

MULTIPLE SIRES - - MS
0135431172 - 01-JAN-40 -%

SANDSPRUIT GC 040013 - A
0062930292 - 23-JUL-04 0%

AFC 104 ICP 417
RI Avg. Wt/Calf: 101 / 9
Age / Calves 12j.3m. / 9

SANDSPRUIT GC 080015 - B
0068609155 - 05-SEP-08 0%

GC 02 19 GC 020019 - A
0061236675 - 09-JUL-02 0%

MULTIPLE SIRES - - MS
0135431172 - 01-JAN-40 -%

MULTIPLE SIRES - - MS
0135431172 - 01-JAN-40 -%

Publication Date 28-JUL-20	CALVING EASE ★ ★ ★	MILK ★ ★ ★	CALF GRWTH ★ ★ ★	MAINTENANCE		GROWTH TEST						FERTILITY ★ ★ ★			COW VALUE	GROWTH VALUE	PRODUCTION VALUE
Selection V.	106 ⁵⁵	97 ³⁹	108 ⁵⁸	-	-	ADG	Kleiber	FCR	Length	Height	SC	AFC	ICP				
	Birth wght	Birth Mat	Milk	Wean wght	Post wean	Mature wght											
BV Ind	106	97	97	108	110	-	98	95	-	102	106	105	93	103	-	-	
Estimated BV	-42 ⁵⁹	.26 ³⁸	-6 ³⁹	10.2 ⁵⁸	15.1 ⁵²	-	18 ¹¹	24 ¹¹	-	7 ¹²	3 ¹³	9.9 ¹³	4.2 ²⁸	-4.6 ¹⁵			
Measurements	33			284 (116)	454(113)	502(114)	-	-	-	-	-	-	-	-	Semen donor: No		

BUL	SKRT	VVO	GDT Ind T	Kond ind	Besp ind	Temp ind	Haar ind	Ekon ind
CC170160	45	13.49	120	101	100	164	110	103

Opmerking : Donkerrooi medium tot groot bul.

LOT 44

M

Naam:
GC17-0051

Ident. Nummer:
GC170051

Reg. Nummer:
008663829

Afdeling:
B

Geboorte Datum:
02/09/17

Kleur:
Rooi

DNA: ZOBOS20-04953

Bul

Vaar: MULTISIRE

P.G. Vaar:

P.G. Moer:

Gem TKP: - (-)

OEK: -

Moer:

BMAFGC080517 - 01/09/08

BMAFGC080517 0075857920

Kalwings: 07/11, 08/12, 08/13, 09/14, 11/15, 10/16, 09/17

M.G. Vaar:

M.G. Moer:

Gem TKP: - (-)

OEK: -

Gem TKP: 373 (7)

OEK: 34 (7)

	Geboorte	Speen (205)	12M	18M	GDT	GDO	VOV	SO	LH	Fase
Prestasie	30	244	288	379				402		B
Indelse		100	100	100						
Tydgenote		32	5	18						
Teeltwaardes - direk	-0.84 (53)	1.7 (51)	1.6 (48)	2.0 (49)	- (-)					
Teeltwaardes - materiaal	0.10 (35)	0.2 (36)								

Teeltwaardes - 02/2 020			
VOV	- (-)	Kalf Temp	- (-)
Kb	- (-)	Volw Gew	- (-)
SO	- (-)	Voer Wins	- (-)
Leugte	- (-)	Hoogte	- (-)

Opmerking: Sterk diep bul met goeie bespiëring. Skrotum omtrek 42cm.

Veldbuldata:							
VVO	GDT(T)Ind	Kond Ind	Besp Ind	Skrt Ind	Temp Ind	Haar Ind	Ekon
9.13	107	90	105	91	110	87	98

VEILINGSKATALOGUS

Amakosi Beefmasters

Datum: 18 Aug 2020

LOT 45

M

Naam: **GC17-0012**

Ident. Nummer: **GC170012**
Bul

Reg. Nummer: **008663160**

Afdeling: **Comm**

Geboorde Datum: **24/07/17**

Kleur: **Rooi**

Vaar: **MULTISIRE**

P.G. Vaar:

P.G. Moer:

Gem TKP: - (-)

OEK: -

Moer:

Kalwings:

M.G. Vaar:

M.G. Moer:

Gem TKP: - (-)

OEK: -

Gem TKP: - (-)

OEK: -

	Geboorde	Speen (205)	12M	18M	GDT	GDO	VOV	SO	LH	Fase
Prestasie	33	255	298	329				379		B
Indekse		98	101	98						
Tydenote		20	2	22						
Teeltwaardes - direk	- (-)	- (-)	- (-)	- (-)	- (-)					
Teeltwaardes - maternaal	- (-)	- (-)								

Teeltwaardes - 01/1 980			
VOV	- (-)	Kalf Temp	- (-)
Klb	- (-)	Volw Gew	- (-)
SO	- (-)	Voer Wins	- (-)
Lengte	- (-)	Hoogte	- (-)

BUL	SKRT	VVO	GDT Ind T	Kond ind	Besp ind	Temp ind	Haar ind	Ekon ind
GC170012	41	8.58	90	93	96	57	73	100

Opmerking : Kommersieël. Groot-raam bul.



Three generation pedigree

compiled by the S.A. Stud Book and Animal Improvement Association

BEEFMASTER



SA STAMBOEK

LOT 46

KOMMERSIEËL / COMMERCIAL

LOGIX

Name: **SANDSPRUIT CC170024**

Sire: **MULTIPLE SIRE - 01/01/40**
0135431172

Section MS DNA No

P.G. Sire:

HORN STATUS

Section - DNA No

P.G. Dam:

HORN STATUS

Avg. ICP: - AFC: - (BWR: -)
Section - DNA No

Dam: **SANDSPRUIT CC120170 - 01/11/12**
CC 120170 0076936376

Section B DNA No

M.G. Sire:

HORN STATUS

Section MS DNA No

M.G. Dam:

HORN STATUS

Avg. ICP: 393 (3) AFC: * (BWR: -)
Section A DNA No

Ident. number: **CC 170024**
Reg. number: **0086783966**
Birth Date: **17/05/17**
Sex: **Male**
DNA No:
INBREEDING: **0%**
Section:
Subsection:

HORN STATUS:

07/2020	CALVING EASE		MILK	CALF GRWTH	MAINTENANCE		GROWTH TEST					FERTILITY		COW VALUE	GROWTH VALUE	PRODUCTION VALUE
Selection Value	104	48	112	30	78	52						84	23			
EBV Index	104	97	112	78	80	-						95	89	14		
EBV	-27	53	0.26	30	3.1	30	-4.5	52	-4.1	50	-	2.8	23	-2.1		
Measurements	34				223	(99)	300	(113)	398	(95)						

08/12/20 03:06:10 PM

SBTGB

Verslag weergawe 1.0. saamgestel met Logix

Bladsy 4

BUL	SKRT	VVO	GDT Ind T	Kond ind	Besp ind	Temp ind	Haar ind	Ekon ind
CC170024	40	12.59	125	101	113	109	47	119

Opmerking : Kommersieël. Swart bul met baie goeie bespierung en manlikheid.



STAMBOEK
SANDSPRUIT



Ident. nommer Geslag Afdeling

Reg. nommer

Geboorte Datum

SANDSPRUIT

CC 170066

MANLIK B

0086716909

22-MAY-17

CC170066

DNS: ZOBOS20-04989

DNA Profiel: ☒

SANDSPRUIT CC 170066 - B
0086716909 - 22-MAY-17

SANDSPRUIT CC 130018 - B
0079179735 - 09-SEP-13

OUERSKAP GEVERIFIEER

DNS: SIRE
GENOMIES:



SANDSPRUIT GC 070160 - A
0072592587 - 15-JUL-07

OEK - TPK 397
RI 109 Gem SI/Kalf: 100 / 7
Oud. / Kalwers 11j.10m. / 9

SANDSPRUIT GC 070065 - B
0066661950 - 08-OCT-07

GC01121 GC 010121 - A
0064340466 - 12-JUL-01

OEK - TPK 363
RI 116 Gem SI/Kalf: 100 / 10
Oud. / Kalwers 14j.1m. / 10

MULTIPLE SIRES - MS
0135431172 - 01-JAN-40

MULTIPLE SIRES - MS

0135431172 - 01-JAN-40

GC 02 44 GC 020044 - A

0061236238 - 29-JUL-02

0%

0%

0%

0%

0%

0%

0%

0%

0%

0%

0%

0%

0%

0%

0%

0%

0%

0%

0%

0%

0%

0%

0%

0%

0%

0%

0%

0%

0%

0%

0%

0%

0%

0%

0%

0%

0%

0%

0%

0%

0%

0%

0%

0%

0%

0%

0%

0%

0%

0%

0%

0%

0%

0%

0%

0%

0%

0%

0%

0%

0%

0%

0%

0%

0%

0%

0%

0%

0%

0%

0%

0%

0%

0%

0%

0%

0%

Gem SI/Kalf: -

Publikasie Datum	KALF GEMAK	MELK	KALFGROEI	ONDERHOUD	GROEI TOETS						VRUGBAARHEID			KOEI	GROEI	PRODUKSIE
28-JUL-20	★★★★	★★★★	★★★★								★★★			WAARDE	WAARDE	WAARDE
Seleksie W.	110 ⁵⁸	100 ⁴⁶	96 ⁶¹	-							106 ²²					
	Geb gew	Geb Mat	Melk	Speen gew	Naspeen	Volw. gewig	GDT	Kleiber	VOV	Lengte	Hoogte	SO	OEK	TKP		
TW Ind	110	95	100	96	96	-	93	96	-	92	98	96	106	104	-	-
Beraamde TW	-73 ⁶¹	-32 ⁴³	-1 ⁴⁶	4.5 ⁶¹	6.1 ⁶⁸	-	4 ⁹	25 ⁹	-	-2 ¹¹	-1 ¹¹	5.1 ¹¹	-5.8 ¹⁸	-4.7 ⁹	-	-
Metings	34			214 (95)	254 (93)	408 (97)	-	-	-	-	-	-	-	-		

Semen skenker: Nee

BUL	SKRT	VVO	GDT Ind T	Kond ind	Besp ind	Temp ind	Haar ind	Ekon ind
CC170066	40	19.84	90	90	90	82	79	95

Opmerking : Bul met goeie diepte.

LOT 48

M

Naam:
GC17-0023

Ident. Nommer:
GC170023
Bul

Reg. Nummer:
008663786

Afdeling:
Comm

Geboorte Datum:
27/07/17

Kleur:
Rooi

Vaar: MULTISIRE

P.G. Vaar:

P.G. Moer:

Gem TKP: - (-)

OEK: -

Moer: GC14-0030 - 06/06/14

GC140030 0080116296

Kalwings: 07/17, 06/18

M.G. Vaar:

M.G. Moer:

GC030003 - 10/07/03
GC030003 0062929641

Gem TKP: 408 (8)

OEK: 37 (8)

Gem TKP: 329 (2)

OEK: 37 (2)

	Geboorte	Speen (205)	12M	18M	GDT	GDO	VOV	SO	LH	Fase
Prestasie	30	263	303	441				383		B
Indekse		100	101	102						
Tydgenote		20	5	2						
Teeltwaardes - direk	-0.52 (52)	0.3 (51)	0.2 (25)	0.3 (24)	- (-)					
Teeltwaardes - maternas	0.34 (26)	1.5 (28)								

Teeltwaardes - 02/2 020			
VOV	- (-)	Kalf Temp	- (-)
Klb	- (-)	Volw Gew	- (-)
SO	- (-)	Voer Wins	- (-)
Lengte	- (-)	Hoogte	- (-)

Opmerkings: Harde donker rooi bul. Skrotum omtrek 40cm.

Veldbuldata:							
VVO	GDT(T)Ind	Kond Ind	Besp Ind	Skrt Ind	Temp Ind	Haar Ind	Ekon
9.11	106	108	105	108	110	43	107



VEILINGSKATALOGUS

Amakosi Beefmasters

Datum: 18 Aug 2020

LOT 49

M

Naam:
GC17-0074

Ident. Nummer:
GC170074
Bul

Reg. Nummer:
008663190

Afdeling:
Comm

Geboorte Datum:
19/09/17

Kleur:
Rooi

Vaar: MULTISIRE

P.G. Vaar:

P.G. Moer:

Gem TKP: - (-)

OEK: -

Moer:

Kalwings:

M.G. Vaar:

M.G. Moer:

Gem TKP: - (-)

OEK: -

Gem TKP: - (-)

OEK: -

	Geboorte	Soen (205)	12M	18M	GDT	GDO	VOV	SO	LiH	Fase
Prestasie	32	250	298	411				383		B
Indekse		98	97	97						
Tydgenote		2	20	15						
Teeltwaardes - direk	- (-)	- (-)	- (-)	- (-)	- (-)					
Teeltwaardes - matemaal	- (-)	- (-)								

Teeltwaardes - 01/1 980			
VOV	- (-)	Kalf Temp	- (-)
Klb	- (-)	Volw Gew	- (-)
SO	- (-)	Voer Wins	- (-)
Lengte	- (-)	Hoogte	- (-)

BUL	SKRT	VVO	GDT Ind T	Kond ind	Besp ind	Temp ind	Haar ind	Ekon ind
GC170074	39	*	*	*	*	*	*	*

Opmerking : Kommersieël. Goeie bul met breedte en diepte.

Vroulike diere :

LOT	BESKRYWING
51	10 DRAGTIGE KOMMERSIËLE VERSE
52	10 DRAGTIGE KOMMERSIËLE VERSE
53	10 DRAGTIGE KOMMERSIËLE VERSE
54	10 KOMMERSIËLE VERSE - BY BUL GELOOP
55	10 KOMMERSIËLE VERSE - BY BUL GELOOP
56	10 DRAGTIGE KOMMERSIËLE KOEIE
57	10 DRAGTIGE KOMMERSIËLE KOEIE

RULES OF AUCTION
TERMS AND CONDITIONS

1. This auction will be held under the control of BKB Limited/ BKB VAN WYK (Pty) Limited/ BKB Louw (Pty) Limited (hereinafter referred to as "the Auctioneer") with business premises situate at:
2. The Auctioneer is hereby appointed by the Purchaser and Seller to act for and on behalf of the Purchaser and Seller as agent in accordance with Section 54 of the Value-Added Tax Act, 1991, in respect of all tax invoices, credit and/or debit notes in respect of all livestock, game and/or goods offered at the auction or any costs of transport and insurances premiums paid for on behalf of the Purchaser and Seller.
3. The rules of this auction shall comply with the provisions of Section 45 and all relevant regulations to the Consumer Protection Act 68 of 2008.
4. For greater clarity Section 45(1-4) states as follows:
 - 4.1 In this section, "auction" includes a sale in execution of or pursuant to a court order, to the extent that the order contemplates that the sale is to be conducted by an auction.
 - 4.2 When goods are put up for sale by auction, each lot is, unless there is evidence to the contrary, regarded to be the subject of a separate transaction.
 - 4.3 A sale by auction is complete when the auctioneer announces its completion by the fall of the hammer, or in any other customary manner, and until that announcement is made, a bid may be retracted.
 - 4.4 Notice must be given in advance that a lot or sale by auction is subject to:
 - 4.4.1 A reserved or upset price; or
 - 4.4.2 A right to bid by or on behalf of the owner or auctioneer, in which case the owner or auctioneer, or any one person on behalf of the owner or auctioneer, as the case may be, may bid at the auction.
5. Until the fall of the hammer as contemplated in Section 45(3) of the Act, any bid may be retracted or declined by the Auctioneer if not compliant with the regulations of the Consumer Protection Act.
6. The auction is not an absolute auction but subject to reserved prices settled by the sellers and as pointed out by the Auctioneer prior to the sale of the set asset or lot.
7. The auction shall take place at the date and time as advertised or publicised and will not be postponed or delayed to enable any member or group of the public to partake in the auction.
8. Should the Auctioneer become aware of any fault on advertising material or any other publication or amendment to these Rules of Auction, the Auctioneer will prior to the auction point out and when necessary amend such mistakes in the advertisement or publication.
9. Any person attending the auction to enter a bid, must prior to the auction register as a buyer on the bidders' roll and comply with the conditions as set out in Chapter 1 of FICA 2001. The purchaser shall sign the bidders' roll/card.
10. Any person who attends the auction to enter a bid on behalf of another person must be duly authorised thereto by means of a written letter of authority from its principal and such a person together with his principal must both register prior to the auction on the bidders' roll and provide all necessary information as required in Chapter 1 of the regulations issued in terms of FICA 2001 with regard to proof of its identity. The bidders' roll must be signed by such a person and on behalf of its principal.
11. Where the principal is a company the letters of authority shall appear on the letterhead of the company together with a certified copy of a resolution authorizing the person to bid on behalf of the company. (For purposes of this rule any reference to a company will include any reference to juristic person including partnerships, trusts or incorporated entities).
12. All purchasers have a right of inspection of all goods put up for sale and the auctioneer shall provide reasonable time and access prior to the start of the auction for such an inspection.
13. All livestock and goods are sold "voetstoots" and the purchasers do not enjoy the protection of Section 55 and 56 of the Consumer Protection Act.
14. Any information provided regarding the quality, breeding, age, date of insemination, condition, reproductive status or any information regarding health, production or mass or any other aspect of the livestock, is provided by the seller and any misrepresentation by the seller is without the cooperation or knowledge of the Auctioneer. Any right of recourse as a result of such misrepresentation shall be against the seller.
15. Any bid made does not include VAT which, where applicable, will be added to the bidding price for which a VAT invoice will be issued.
16. All sales are for cash and purchase price is payable immediately to the Auctioneer on acceptance of the bid unless otherwise arranged prior to the auction with the Auctioneer. Any payment made in cash is further subject to cash or any other handling fees. Should the Purchaser however fail to make payment within 7 days from date of delivery, BKB will be entitled to add interest calculated at the current bank prime rate plus 5% to the capital amount outstanding. The interest will be calculated monthly and capitalised.
17. Should the purchaser not pay the purchase price immediately and has failed to make arrangements for payment with the Auctioneer, then the Auctioneer can/will cancel the sale and treat the assets or lots as unsold lots which may again be presented on the auction for sale or be sold out of hand by means of liaison services, depending on the seller's mandate to the auctioneer.
18. Ownership in the lot or assets will remain that of the seller until the purchase price has been paid in full to the seller with the provision that the risk in the assets or lot passes to the purchaser at the fall of the hammer as set out in clause 24.
19. In the event that Purchaser has made necessary finance arrangements with BKB, the Purchaser hereby authorises BKB to pay the purchase price or costs of transport, insurance and any other agreed cost, minus BKB's commissions, on behalf of the Purchaser to the Seller and other service providers, in which event the said payment by BKB on behalf of the Purchaser will be deemed to be monies lent and advanced, the terms and conditions thereof being agreed with the Purchaser in a separate credit agreement or sale agreement. All payments made by BKB to the Seller on behalf of the Purchaser in terms of this clause will be made after the lapse of 5 (Five) working days from date of delivery of the asset to the Purchaser. Any payment made by BKB to the Seller prior to the lapse of the 5 (Five) working day period is made at the sole discretion of BKB and not an enforceable indulgence.
20. For as long as any amount is owing to BKB by the Purchaser, the Purchaser may not, where the assets are the subject of security of the Purchaser's credit facility with BKB, relinquish possession of the said asset, nor may he cede the asset or any of its rights and obligations in terms of this agreement to a third party or otherwise encumber, sell or dispose of the said asset or allow it to become the subject of any right of retention, hypothec, pledge or any encumbrance, whatever the cause thereof may be. BKB may be entitled to cede its rights and obligations without affecting its rights of recourse for any monies still due to it.
21. In the event of the Seller already being indebted to BKB or any of its affiliates at the time of this auction, the Seller hereby irrevocably authorises BKB to set off the purchase price due to the Seller by BKB (minus BKB's commission) against the amounts due by the Seller to BKB.
22. Where BKB, in terms of a credit agreement, lent and advanced monies to the Purchaser for payment of the purchase price of any asset or payment of any transport costs or insurance premiums, no defence of whatsoever nature which the Purchaser may raise against the Seller or the transport contractor or the insurance company may be raised against BKB and the Purchaser shall still be obligated to pay all amounts owing, together with further interest and costs thereon raised in terms of the credit agreement or sale agreement, to be BKB. The conditions of this clause do not interfere with the rights, entitlements or remedies the Purchaser may have against the Seller, transport contractor or insurance company.
23. Neither the Purchaser, nor the Seller, shall be entitled to apply set-off or to retain any monies owing arising from any claim they may have against each other or BKB with regards to any amount owing in terms hereof. Each lot shall immediately after the fall of the hammer deemed to be delivered to the purchaser at which time the risk will pass to the purchaser who will at his own risk and cost remove the lots or assets from the auction terrain. Removal of any assets or lots however will not be allowed by the Auctioneer until payment of the purchase price by the purchaser or acceptable arrangements for payment thereof have been made by the purchaser with the Auctioneer.
24. Each lot shall immediately after the fall of the hammer deemed to be delivered to the purchaser at which time the risk will pass to the purchaser who will at his own risk and cost remove the lots or assets from the auction terrain. Removal of any assets or lots however will not be allowed by the Auctioneer until payment of the purchase price by the purchaser or acceptable arrangements for payment thereof have been made by the purchaser with the Auctioneer.
25. The Auctioneer will only be obliged to give reasons of the auction if such reasons are other than the voluntary sale of goods by its owners.
26. The bidders' roll and vendor roll will be available for inspection during the normal office hours at the business premises of the Auctioneer.
27. The rules of auction will only be read out at the auction if they were not available to the public at the place of business of the Auctioneer. In the event of livestock and game auctions, the rules of auction remain unchanged and are in general available at the business premises of the Auctioneer or on the website of the Auctioneer.
28. Under no circumstances will BKB be held liable for any loss or damage of any cause whatsoever albeit direct or indirect damages suffered by anyone if the livestock at the auction premises have to be placed under quarantine as a result of the presence of a livestock disease present. In such event BKB will have the right to cancel the auction as well as any already complete sales and no party will be entitled or have a right of recourse against BKB.
29. Any party requiring permits, removal certificate, documentation of identification or any other statutory prescribed document will solely be responsible for obtaining same. Any instructions to an auctioneer with regards to the loading, transporting, choice of transport contractors, insurance or choice of insurers will be executed at the sole risk of the person acquiring such services and the Auctioneer will not be held responsible for any losses whether direct or indirect which may be suffered as a result of giving effect to the instructions by the Auctioneer. The Auctioneer however does accept responsibility as contemplated in Section 35(2) of the Consumer Protection Act whilst the goods or lots are in the possession of the auctioneer. Any agreement entered into by the Auctioneer with a transport company or insurer is done so in its representative capacity of the seller or buyer. All transport costs or insurance premiums are therefore payable to the Auctioneer in cash except if acceptable alternative arrangements were made with the Auctioneer.
30. Both the seller and the buyer consent to the jurisdiction of the Magistrate's Court as contemplated in Section 45 of Act 32 of 1944 having regard to any action which the Auctioneer may institute against the buyer or seller irrespective of the cause of action. Notwithstanding the aforesaid the Auctioneer will have the sole and absolute discretion to institute action in any High Court with appropriate jurisdiction.
31. Any legal costs that BKB may have or will incur as a result of the non-compliance of the Purchaser and/or Seller in terms of its or their obligations herein, shall be recoverable by BKB, together with collection commissions from the Purchaser and/or Seller on a scale as between attorney and own client.
32. No variation, amendment, novation or addition to these terms and conditions will have the effect of BKB renouncing any of its rights in terms hereof, unless it is reduced to writing and signed by BKB.
33. No relaxation or indulgence by the Auctioneer must be interpreted as a waiver of any of the Auctioneer's rights in terms hereof. Such relaxation or indulgence must also not be interpreted as a novation hereof.
34. Should any condition be unlawful or become retrospectively unlawful, that unlawful condition shall be deemed to be amended to the extent and in the manner as is necessary to make it lawful or should such amendment be impossible, the unlawful conditions shall be deemed devisable from the remainder of the conditions and *pro non scripto*.
35. The cattle scale despite being calibrated, is not verified in terms of the Legal Metrology Act.
36. The weight as displayed for each lot is an unverified indication of average weight and may not be relied on for purposes of entering a bid.
37. All sales of livestock are sales per head of cattle and not per kilogram.
38. Rules of auctions and term and conditions in other languages can be asked for.

BKLB **LOUWID**

KZN

**DANKIE VIR JULLE
ONDERSTEUNING**

VEILIG RY

**THANK YOU FOR YOUR
SUPPORT**

DRIVE SAFE