

SANDSPRUIT BEEFMASTERS | AMAKOSI BEEFMASTER | GERMART DROUGHTMASTERS



DINSDAG | 20 AUGUSTUS 2024 | 11:00

PLAAS OAKDALE | LADYSMITH KZN



40 BULLE

20 STOET KOEIE & VERSE (DRAGTIG)

40 KOMMERSIELE KOEIE EN VERSE (DRAGTIG)

100 SEMENSTROOITJIES VAN GC 17-0050

LADYSMITH VEILING GPS: S28°26.093' E29°28.838'

ROETE:

VANAF HARRISMITH: Ry op die Ladysmith pad (N3) vir 45km.

Draai links by plaas in. VANAF LADYSMITH: Ry op Harrismith pad (N3) vir 35km.

Draai regs by plaas in.

CHARLES CAMPHER 083 631 3790 | GERT CAMPHER 083 632 4392



Veldbul SA
www.bkb.co.za

AFSLAERS
POSBUS 220, BETHLEHEM, 9700
TEL: 058 303 8552 FAKS: 058 303 8553
E-POS: BETHLEHEM@BKBLOUWID.CO.ZA
REG. NO. 2005/026173/07



@sandspuitbeef



ansiac@gmail.com | macampher@gmail.com
Volledige veilingsreëls en terme is beskikbaar by:
www.bkb.co.za



NAVRAE:
RIAAN FERREIRA 082 372 9454
AFSLAER: JAN MOSTERT 083 306 8408
BKB, DUNDEE 087 170 0215



The Trusted Home of Agriculture
Die Betroubare Tuiste van Landbou



BKB

heet u welkom by
Sandspruit & Amakosi
Beefmasters en
Germart Droughtmasters
se
26ste Veiling

GENIET DIE DAG SAAM MET ONS!

Voorwoord

Baie welkom by Seisoen 26 van Boer seek 'n bul!!

Sandspruit & Amakosi Beefmasters en Germart Droughtmasters teel al 50 jaar lank Beefmaster tipe beeste, waarvan 29 jaar Stoet Beefmasters en 9 jaar Stoet Droughtmaster is. Ons streef om geharde, aangepaste, vrugbare, rooi beeste met goeie vel, oor, been, bespierung & konstitusie te teel om onder ekstensiewe toestande te gedy en vanaf die veld bemark te kan word.

Bulle word op 14 maande en 2 jaar in die kuddes gebruik. Op 3 jaar word die bulle afgerond en op die jaarlikse Bulveiling aangebied. Bulle word elke jaar getoets deur Veldbul SA.

Ons is baie dank verskuldig aan ons Hemelse Vader vir die geleentheid en voorreg om met sulke prag diere te kan boer en vir die geleentheid om dit met julle te kan deel. Ons poog om waarlik 'n positiewe verskil in julle kuddes te maak.

Baie sterkte aan ons gasverkoper Kobus Muller! Dankie ook vir al julle hulp en bydraes veral met die bemarking!

Ons is trots om ons diere met julle te kan deel. Geniet die dag saam met ons!!

Campher familie

Bedankings

Dr Hannes Dreyer vir sy positiewe bydrae tot die kuddes. Baie dankie vir jare se hulp en ondersteuning.

BKB, Riaan en jou span vir julle harde werk.

Jan, ons afslaer, vir die belangrike rol wat jy speel vandag.

Oom Xander wat 'n passie het vir ons beeste! Ons waardeer Oom!

Oom Jan Jooste wat die veiling op 'n gepaste wyse vir ons begin.

Dr Janine Cook en Dr Paul Reynolds ons veeartse vir die toets van die bulle en hulle hulp en raad deur die jaar.

Ons families, gesinne en werkers vir julle werk en ondersteuning.

Marista en die dames wat reg staan by die verversings.

Coach Carel vir die steak wat hy gaan braai na afloop van die veiling.

Vir almal wat die dag saam met ons kom deel, aan die ou kopers, nuwe kopers en ons vriende wat ons ondersteun, ons waardeer julle tyd!

Ons borge : Esco Feeds, Standard Bank Harrismith, Afgri Harrismith, PSG Harrismith, BR dienste Harrismith, CN Lourens slaghuis en Oos-Vrystaat Deli van Bethlehem en die RPO.

"BENUT JOU VELD VOLUIT MET SANDSPRUIT EN AMAKOSI BEEFMASTERS +
GERMART DROUGHTMASTERS!!!"



ADDISIONELE NOTA'S



A. VERSEKERINGSOPSIE DEUR PSG HARRISMITH

Die volgende dekking is beskikbaar vandat die hamer val, nl:

- 'n 30 dae opsie @ 3% van die aankoopbedrag (BTW ingesluit)
- Sasria dekking @ R550-00

Die 30 dae opsie dek die volgende :

Brand - Weerlig - Plantvergiftiging - Impotensie agv ongeluk en siekte - Hartwater - Rooiwater - Galsiek - Transito en Diefstal.

TERME : Betalings per EFT voor 20 Augustus 2024

NAVRAE : Wessel Hamman Sel : 082 451 9471

wessel.hamman@psg.co.za

B. ALLE DIERE OP DIE VEILING WORD VIR 21 DAE GEWAARBORG

- VIR** :
- * Vrugbaarheid (Bulle)
 - * Dragtigheid (koeie en verse wat as dragtig gesertifiseerd aangebied word)
 - * Bosluis oorgedraagde siektes, nl: Rooiwater en Galsiek

C. ALLE ERFLIKE GEBREKE WORD VIR 3 MAANDE GEWAARBORG.





Baie Dankie Aan Ons Borge

Hinterland



Rudi Paulson - 036 637 7005 (Harrismith)



Standard
Bank

Harrismith - 058 624 2428



Carel Lourens - 082 492 6633



Cheryl van Heerden - 034 212 3648



Kobus de Waal - 082 941 7449



The African Seed Company

Lima grain - 082 339 9173



Wessel Hamman - 085 623 0614
(Harrismith)



Esco Feeds - Dino 036 352 6883

Terme vir veilingskatalogus

<u>Term</u>	<u>Beskrywing/ Description</u>	<u>Reeks</u>
GDT(t)	Growth (ADG) during whole testphase / <i>Groei gedurende die toetsfase</i>	Gram/dag
GDT(s)	Growth (ADG) peak summer period / <i>Groei gedurende die piek somerperiode</i> (Nov – Jan)	Gram/dag
GDT(t) Ind	ADG(t) as a index / <i>GDT(t) op indeks basis</i>	
GDT(s) Ind	ADG(s) as a index / <i>GDT(s) op indeks basis</i>	
T.T. Ind	Temperament score)/ <i>Temperamenttelling</i>	1-9(1=mak, 9=wild)
K.T. Ind	Condition score)/ <i>Kondisie-telling</i>	1-9 (1=maer, 9=oorvet)
Besp Ind	Muscling score)/ <i>Bespiering Indeks</i>	1-5 (1=swak, 5=goed)
Haar Ind	Hair coat/ <i>Haartelling</i>	1-5 (1=glad, 5= harig)
Skrotum Ind	Scrotum circumference as a index/ <i>Skrotum-omtrek op indeks basis</i>	
VVO	Veld Conversion Rate / <i>Veldvoeromset</i>	
Kleiber Ind	Growth rate divided by Metabolic mass/ <i>Groei gedeel deur metaboliese massa</i>	
Ekon Ind	= Economic index (a certain value for each trait and then expressed as an index) <i>Ekonomiese Indeks</i>	

LOT	BUL	VAAR	GEB DAT	AFD	SPN IND	SKRT	VVO	GDT Ind T	Kond ind	RUG ind	AGTER ind	VOOR ind	Temp ind	Haar ind	Ekon ind
16	GC210056	VV	18.08.'21	F2/K	*	35	10.15	102	111	102	108	117	66	88	110
Opmerking : Afrika-Droughtmaster tipe. Poena. Lank, breed en diep. Goeie agterkward.															
17	CC210013	WO150236	25.05.'21	C	99	38	13.07	96	105	99	104	100	99	112	99
Opmerking : Medium-groot-raam bul. Sterk Indicus. Sterk rug en agterkward. Goeie manlikheid.															
18	CC210128	VV	15.09.'21	B	111	39	11.21	101	105	105	104	94	74	144	100
Opmerking : Medium-groot-raam bul. Bul wat sterk Indicus is. Diep bul met goeie lengte.															
19	CC210191	CC170007	02.07.'21	C	100	38	9.64	123	91	93	110	100	123	96	103
Opmerking : Medium-raam bul. Uitstekende vel en haar. Goeie bespierung. Sterk rug.															
20	GC210073	*	*	KOM	*	37	8.80	112	101	102	108	117	66	88	109
Opmerking : Afrika-Droughtmaster tipe. Lang, diep bul.															
21	GC210093	*	*	KOM	*	37	6.97	121	99	98	90	96	57	145	109
Opmerking : Lank en breed. Dra baie vleis. Sterk agterkward en rug.															
22	CC210183	WO150236	02.07.'21	C	113	34	14.69	101	91	105	98	94	148	48	96
Opmerking : Medium-groot-raam bul. Bont bul uit die WO-Bloedlyn. Dik bul. Goeie bespierung en diepte.															
23	CC210044	DR169505	02.07.'21	C	116	36	12.19	104	105	105	98	107	74	112	104
Opmerking : Medium-groot-raam bul. Bul wat lank, diep en breed is.															
24	CC210031	CC160138	22.06.'21	C	114	44	19.44	90	112	99	104	100	99	96	99
Opmerking : Medium raam bul. Bul is breed, diep en lank.															
25	GC210022	VV	27.04.'21	F2/K	*	38	13.75	90	101	102	108	98	66	58	102
Opmerking : Afrika-Droughtmaster tipe.															
26	CC210110	WO150236	25.08.'21	C	100	36	12.31	93	105	105	110	107	99	128	98
Opmerking : WO100299 Bloedlyn. Medium-groot-raam bul. Baie goeie breedte en been. Sterk agterkward.															
27	CC210141	CC130125	01.10.'21	C	109	40	13.72	111	112	93	98	107	148	96	106
Opmerking : GC070065 Kleinseun. Medium-groot-raam bul. Goeie manlikheid. Bul is diep en breed met baie goeie been.															
28	GC210028	VV	30.04.'21	F2/K	*	43	11.97	104	101	102	108	98	66	88	105
Opmerking : Afrika-Droughtmaster tipe. Besonderse kop. Poena. Goeie been. Sterk Indicus.															
29	GC210010	VV	17.02.'21	F2/K	*	34	14.08	90	101	102	108	98	99	88	104
Opmerking : Afrika-Droughtmaster tipe.															
30	CC210041	DR169505	02.07.'21	C	119	37	12.00	98	98	99	98	100	99	96	95
Opmerking : Medium-groot-raam bul. Sterk Indicus. Goeie been. Sterk rug en agterkward. Goeie manlikheid.															
31	CC210084	CC180124	04.08.'21	C	103	41	12.56	108	91	90	92	94	74	112	101
Opmerking : Medium-groot-raam bul. "Scurrs". Uitstekende bespierung. Baie goeie lengte en diepte.															

LOT	BUL	VAAR	GEB DAT	AFD	SPN IND	SKRT	VVO	GDT Ind T	Kond ind	RUG ind	AGTER ind	VOOR ind	Temp ind	Haar ind	Ekon ind
32	GC210029	GC170050	05.05.'21	C	107	34	17.54	90	99	98	90	96	115	87	90
Opmerking : Goeie lengte en vel. Lekker Indicus.															
33	GC210080	*	*	KOM	*	35	8.45	108	91	102	90	98	66	88	102
Opmerking : Afrika-Droughtmaster tipe. Breë bul. Sterk kop.															
34	CC210077	GC070065	04.08.'21	C	103	46	10.39	108	90	105	104	100	74	112	103
Opmerking : Medium-groot-raam bul. Sterk Indicus. Goeie diepte en lengte.															
35	CC210012	VV	25.05.'21	B	101	37	13.26	107	105	105	104	107	74	80	111
Opmerking : "Scurrs". Medium-groot-raam bul. Besonderse diepte en breedte.															
36	GC210087	*	*	KOM	*	34	8.97	98	90	90	90	98	132	88	90
Opmerking : Afrika-Droughtmaster tipe. Goeie diepte en breedte.															
37	GC210043	VV	19.5.'21	F2/K	*	34	10.67	105	101	102	108	98	66	88	104
Opmerking : Afrika-Droughtmaster tipe. Goeie manlikheid, breedte en been.															
38	CC210108	GC070065	25.08.'21	C	103	37	24.30	90	98	90	92	94	99	96	90
Opmerking : Medium-groot-raam bul. Goeie lengte en been.															
39	CC210048	WO150236	02.07.'21	C	97	36	11.25	108	105	105	104	94	123	128	99
Opmerking : Medium-groot-raam bul. Goeie manlikheid en bespiering.															
40	CC210056	CC160138	02.07.'21	C	102	38	11.82	113	105	99	92	100	74	144	103
Opmerking : Poena. Medium-groot-raam bul. Diep bul met goeie vel en haar.															
41	CC210103	GC070065	20.08.'21	C	100	45	11.45	94	91	90	98	100	123	112	93
Opmerking : Goeie Diepte. Sterk Rug.															
42	CC210192	CC180063	01.09.'21	C	99	39	11.27	103	105	105	104	100	173	128	95
Opmerking : Goeie diepte en been.															
43	GC200009	HOT150153	26.04.'21	F2/K	*	38	8.49	99	119	121	111	114	91	110	111
Opmerking : Afrika-Droughtmaster tipe. Poena. Goeie vel en haar. Goeie lengte.															
44	GC200057	C090221	08.09.'21	F2/K	*	34	7.47	95	97	102	93	93	152	94	91
Opmerking : Afrika-Droughtmaster tipe. Mooi kop. Goeie diepte en breedte.															
45	GC200025	VV	29.05.'21	KOM	*	35	5.51	134	109	101	103	92	148	93	112
Opmerking : Poena. Lank, diep en breed.															

BULSAAD STROOITJIES

46	20 STROOITJIES	Opmerking : GC170050
47	20 STROOITJIES	Opmerking : GC170050

Vroulike diere:

50	5 DRAGTIGE VERSE	Opmerking :
51	5 DRAGTIGE VERSE	Opmerking :
52	5 DRAGTIGE VERSE	Opmerking :
53	5 DRAGTIGE VERSE	Opmerking :
54	5 DRAGTIGE VERSE	Opmerking :
55	5 DRAGTIGE VERSE	Opmerking :
56	5 DRAGTIGE VERSE	Opmerking :
57	5 DRAGTIGE VERSE	Opmerking :
58	5 DRAGTIGE VERSE	Opmerking :
59	5 OOP VERSE	Opmerking :
60	5 OOP VERSE	Opmerking :
61	5 OOP VERSE	Opmerking :
62	5 DRAGTIGE KOEIE	Opmerking :
63	5 DRAGTIGE KOEIE	Opmerking :
64	5 DRAGTIGE KOEIE	Opmerking :
65	4 DRAGTIGE VERSE	Opmerking : 6-8 maande dragtig. Eerstekalf verse
66	4 DRAGTIGE VERSE	Opmerking : 6-8 maande dragtig. Eerstekalf verse
67	4 DRAGTIGE VERSE	Opmerking : 6-8 maande dragtig. Eerstekalf verse

AMPTELIKE VEILINGSKATALOGUS VIR /
OFFICIAL AUCTION CATALOGUE FOR

SANDSPRUIT & AMAKOSI

LADYSMITH
20 August 2024

All Pedigree- and Performance Data is as recorded on LOGIX on 13 August 2024



BEEFMASTER
CATTLE BREEDERS' SOCIETY OF SA
BEESTELERSGENOOTSAP VAN SA



SA STAMBOEK
STUD BOOK



AUCTIONS UNDER THE AUSPICES OF THE BEEFMASTER CATTLE BREEDERS' SOCIETY

It is compulsory for all stud auctions to be conducted under the auspices of the Society.

The term “**Under the auspices of the Beefmaster Cattle Breeders' Society**” means that officers of the society shall ensure that the official catalogues, drawn up by SA Stud Book with the information on its “Logix system”, are available at the auction, that the information regarding paternity, production data and estimated breeding values, contained in the catalogue complies with the minimum breed standards as set by the Beefmaster Cattle Breeders' Society as well as the applicable provisions of the Constitution of the Beefmaster Cattle Breeders' Society, and that the animals offered have already been inspected and approved by an inspector.

The Beefmaster Cattle Breeders' Society also requires that stud animals offered at stud auctions under the auspices of the Beefmaster Cattle Breeders' Society are inspected on the day of the auction by inspectors of the Society to ensure that the animals still comply to the Beefmaster's minimum breed standards.

The Society also verifies the following requirements for animals to be offered at an auction under the auspice of the Society:

- Fertility certificate (not older than three months) and certificate regarding venereal diseases of bulls
- Certificate (not older than three months) of a negative Tuberculosis test of cows, heifers and bulls
- Certificate (not older than three months) of a negative Contagious Abortion test of cows and bulls
- Heifers older than 32 months and cows without a calf should preferably be pregnant and certified as such
- All semen and embryo donors offered for sale must be registered as donors

Although the Society carries out all checks to the best of its ability, the Society does however, not have any control over tests carried out and/or information provided by a third party and/or guarantee its accuracy or accept responsibility for erroneous information. The Society can thus not vouch for the following:

- Immunisation and health status of the animals
- Pregnancy status of cows and heifers
- Breeding ability of bulls
- Fertility status
- Venereal disease
- Faulty information due to printing errors.

The “Logix system” the computer animal recording system used by SA Stud Book to administer the Society's animal recording services, is also deemed as a third party. The information obtained from Logix is therefore deemed as information from a third party.

Commercial animals and animals not approved for sale at an auction, cannot be offered for sale under the auspices of the Society.

ANIMAL, OWNER AND PEDIGREE INFORMATION

1
2
3
4
5

LOT 1 (M)

Breed Logo

6

7

SB 200201 PP(c)

Herd Book	SP
Birth date	2020-01-01
Age	2y 7m
Inbreeding	1%
DNA	ABC001234

9 (& 10)

SB 140007

Parentage	Sire	Dam
DNA	✓	
Genomic	✓	

SB 140010

Age 7 | AFC 27 | ICP 366
Calves 6 | Weaned 2
Avg. WI 89 | Wean Mat. 93
Calvings: 16-11, 17-10, 18-10, 20-03, 21-03, 22-04, 23-04

SB 110001

SB 110012 P

Age 10 | AFC 32 | ICP 475
Calves 5 | Weaned -
Avg. WI - | Wean Mat. 80

SB 110001

SB 060004 PcH

Age 13 | AFC 72 | ICP 360
Calves 8 | Weaned 7
Avg. WI 105 | Wean Mat. 110

SUPERBULL BREEDERS

Town, Province

078 737 2855

super_bull@webmail.com

1. Lot Number & sex (mixed lots)
2. Breed's logo
3. GT - animal is genomically tested
4. Animal Identification Number
5. Polled Status
 - Celtic: PP(c)/Pp(c) - polled, HH(c) - horned
 - Phenotypic: P/PcH - polled, HH - horned, SC - scurs
6. Animal's photo, or Herd's logo
7. Herd's logo
8. Owner's information
9. Animal's information
 - Herd book section
 - Birth date
 - Animal's age
 - Animal's inbreeding percentage
 - DNA Number - if available
10. Additional information (only females)
 - Age at first calving
 - Number of calves born
 - Number of calves weaned
 - Average Wean Index
 - Intercalving Period
11. Parentage Verification - a green tick (✓) indicates that the sire and/or dam has been verified via microsatellite (DNA) and/or Genomic testing
12. Dam information
 - Age and Number of Calvings
 - Average Wean Index and Number of Calves Weaned
 - Age at First Calving and Intercalving Period
 - Cow award
13. Four (4) generation pedigree
14. VPLAN Membership

QR Code

This code can be scanned with a smart device. It redirects to the animal's information on www.SABeefBulls.com where additional information for the animal is available.



Myostatin	
Q204X	Free
NT821	Carrier
F94L	Not Tested

Myostatin Results

- Free - free from double muscling genes
- Carrier - heterozygotic / carrier of one double muscling gene
- D. Muscled - homozygotic / double muscled

GENETIC VALUES - BUILDING BLOCKS

Calf and Mother				Fertility				Post-Wean Growth			Frame			Carcass		
Birth Dir.	Birth Mat.	Wean Dir.	Wean Mat.	Scr. Circ.	Heifer Fert.	Cow Fert.	Longev.	Post Wean	ADG	FCR	Mature Weight	Height	Length	EMA	Fat	Mar
83	121	130	89	112	84	101	112	125	126	129	113	104	115	149	82	119
87%	70%	83%	70%	81%	68%	59%	69%	72%	76%	80%	65%	81%	80%	77%	74%	73%

The Logix Selection Values are compiled of specific genetic building blocks, as indicated in the selection value descriptions on the next page. These genetic building blocks are indicated in the catalogue by their Breeding Value indices and accuracies.

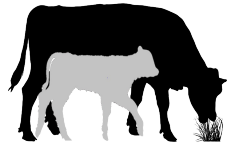
PHENOTYPIC VALUES

Birth Weight	205D Weight	365D Weight	540D Weight	ADG Index	FCR Index	Scrotum	LH
47kg	239kg 109 (19)	284kg 99 (10)	390kg 92 (10)	1680g/d 90 (13)	6.08 98	353mm (D1)	1.20

- 205D, 365D, 540D weights - adjusted weaning, year and 18 month weights, the phenotypic index obtained, and the number of animals in the contemporary group
- ADG and FCR Indices - phenotypic index obtained within the animal's contemporary group
- Scrotum - adjusted scrotal circumference, in mm, as measured at the end of the growth test, as well as the growth test type
- Length-Height Ratio (LH) - the animal's length to height ratio, as measured at the end of the growth test

LOGIX SELECTION VALUES

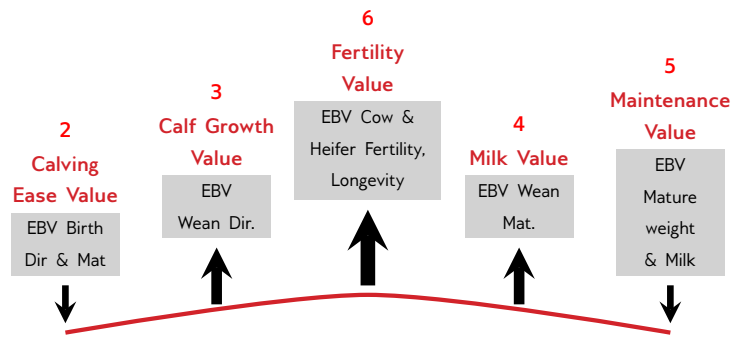
COW VALUE 108	
103	Calving Ease Value
118	Calf Growth Value
86	Milk Value
80	Maintenance Value
110	Fertility Value
GROWTH VALUE 105	
CARCASS VALUE 110	
PRODUCTION VALUE 103	



1 L♀ GIX Cow Value

Selection for:

- Fertile cows,
- with low maintenance,
- that calf easily,
- and wean heavy calves



7 L♀ GIX Growth Value

Selection for efficient growers on veld & in the feedlot



8 L♀ GIX Carcass Value

Selection for higher meat yield on carcass



9 L♀ GIX Production Value

Selection for easy-care, Profitable cattle

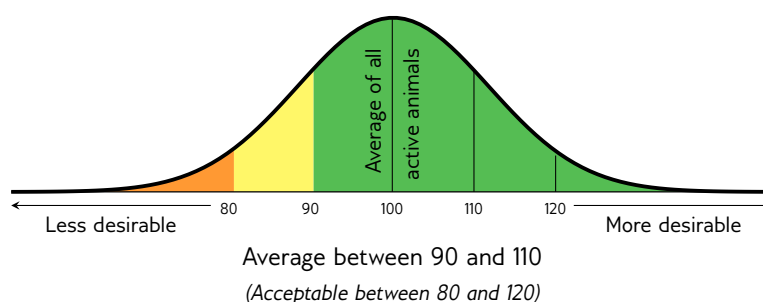
- 80% Cow Value
- 20% Growth Value

EXPLANATION OF BREEDING VALUES AND SELECTION VALUES

Traits		Description/Measurement	Goal	General Guidelines				
				<80	<90	90-110	>110	>120
Selection Values	1 Cow Value	Combination of Calving Ease, Calf Growth, Milk, Maintenance and Fertility Values (Rand-Value)	Profitable Cow	Loss				Profit
	2 Calving Ease Value	Risk for calving problems (calf too heavy) vs calf too small	Avg. birth weight	High				Low
	3 Calf Growth Value	Calf's genetic ability for pre-weaning growth	Heavy weaner calf	Light				Heavy
	4 Milk Value	Cow's genetic mothering and milking ability	Enough milk for the calf	Less				More
	5 Maintenance Value	Maintenance requirements of cow (cow weight and milk)	Low cow maintenance	High			*	Low
	6 Fertility Value	Fertility and retention of cows and heifers	Fertile cows	Low				High
	7 Growth Value	Efficient growth on veld and in feedlot (R-value)	Profitable growth	Loss				Profit
	8 Carcass Value	Meat on carcass (Weight and RTU EBVs)	More meat on the carcass	Less				More
	9 Production Value	Combination of Cow- and Growth values (R-value)	Profitable animals	Loss				Profit
Cow & Heifer	10 Birth Weight Direct	Birth weight (Calf's genetic ability)	Avg. birth weight	Heavy				Light
	11 Birth Weight Maternal	Birth weight (Cow's genetic ability)	Easy calving	Heavy				Light
	12 Weaning Weight Direct	Weaning weight (Calf's genetic ability)	Heavy weaner calves	Light				Heavy
	13 Weaning Weight Maternal	Weaning weight (Cow's genetic ability)	Good mothers	Poor				Good
	21 Mature Cow Weight	Cow weight at weaning of first three calves	Avg. mature cow weight	Light			*	Heavy
	Cow-Calf Birth	EBV Birth Direct / EBV Mature Cow weight	Average	Low				High
Fertility	Cow-Calf Wean	EBV Wean Direct / EBV Mature Cow weight	High calf-cow ratio	Low				High
	14 Heifer Fertility	Age at first calving	Fertile heifers	Less				More
	15 Cow Fertility	First 3 inter-calving periods (ICPs)	Fertile cows	Less				More
	16 Scrotal Circumference	As measured during the growth test	Fertile bulls	Less				More
Growth & Frame	17 Longevity	Retention of progeny	Acceptable progeny	Poor				Good
	18 Post-Wean Weight	12- and 18 month weights	Good post-wean growth	Low				High
	19 Average Daily Gain	Average daily gain	Good growth	Poor				Good
	20 Feed Conversion Ratio	100g feed intake / g weight gain	Feed efficiency	Poor				Good
	Final Test Weight	Final weight in the growth test	Heavy carcass	Light				Heavy
	22 Height	Shoulder / Hip height in growth test	Average height	Short				Tall
	23 Length	Length in growth test	Longer for more muscle	Short				Long
	24 Length-Height Ratio	EBV Length / EBV Height	Longer rather than tall	<1				>1
Carcass	25 Eye Muscle Area	RTU measured eye muscle area	Bigger steaks	Small				Big
	26 Fat Thickness	RTU measured P8 backfat thickness	Carcass quality	Thin				Thick
	27 Marbling	RTU measured % of intra-muscular fat	Juicy meat	Low				High

* Determined by own selection goal

INTERPRETATION OF BREEDING VALUE INDICES

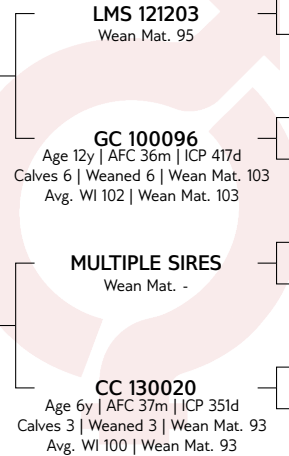


LOT 2 (M) BEEFMASTER CC 210029



Herd Book	C
Birth date	2021-08-15
Age	3y
Inbreeding	0%
DNA ZOCA202467597	

CC 160138		
Wean Mat. 96		
Parentage	Sire	Dam
DNA	✓	
Genomic		



BOS 088210
BOS 077151
Age 7y | Avg. WI 99
Calves 4 | Weaned 3
MULTIPLE SIRES
GC 040018
Age 11y | Avg. WI 100
Calves 9 | Weaned 9
MULTIPLE SIRES
GC 080236
Age 7y | Avg. WI 98
Calves 5 | Weaned 5

SANDSPRUIT BEEFMASTERS

Ladysmith, Kwazulu Natal
0836313790
ansiac@gmail.com

POSBUS 2468,,LADYSMITH, 3370

COW VALUE 101

94	Calving Ease Value
110	Calf Growth Value
105	Milk Value
95	Maintenance Value
92	Fertility Value

GROWTH VALUE -

CARCASS VALUE -

PRODUCTION VALUE -

LOGIX
EBV Analysis 2024-06-19

Calf and Mother				Fertility			
Birth Dir.	Birth Mat.	Wean Dir.	Wean Mat.	Scr. Circ.	Heifer Fert.	Cow Fert.	Longev.
95	98	110	105	102	95	107	86
41%	26%	60%	40%	11%	31%	17%	40%

Post-Wean Growth			Frame			Carcass		
Post Wean	ADG	FCR	Mature Weight	Height	Length	EMA	Fat	Mar
111	104	-	103	109	105	-	-	-
56%	10%		8%	11%	11%			

Birth Weight	205D Weight	365D Weight	540D Weight	ADG Index	FCR Index	Scrotum	LH
-	259kg 114 (15)	311kg 106 (17)	417kg 112 (17)	-	-	- (B2)	-



Myostatin	
Q204X	Not Tested
NT821	Not Tested
F94L	Not Tested

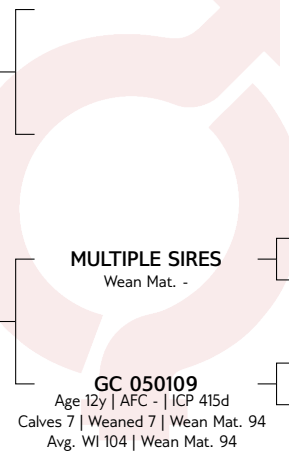
SELLER REMARKS:

LOT 3 (M) BEEFMASTER CC 210188



Herd Book	B
Birth date	2021-07-02
Age	3y 2m
Inbreeding	0%
DNA ZOCA202467631	

MULTIPLE SIRES		
Wean Mat. -		
Parentage	Sire	Dam
DNA		
Genomic		



MULTIPLE SIRES
Wean Mat. -
GC 100053
Age 14y | AFC 40m | ICP 408d
Calves 9 | Weaned 8 | Wean Mat. 101
Avg. WI 97 | CCB - | CCW -
Calvings: 13-08, 14-08, 15-09,
16-11, 18-05, 19-05, 20-06, 21-07,
22-07
GC 050109
Age 12y | AFC - | ICP 415d
Calves 7 | Weaned 7 | Wean Mat. 94
Avg. WI 104 | Wean Mat. 94

SANDSPRUIT BEEFMASTERS

Ladysmith, Kwazulu Natal
0836313790
ansiac@gmail.com

POSBUS 2468,,LADYSMITH, 3370

COW VALUE -

101	Calving Ease Value
88	Calf Growth Value
107	Milk Value
-	Maintenance Value
76	Fertility Value

GROWTH VALUE -

CARCASS VALUE -

PRODUCTION VALUE -

LOGIX
EBV Analysis 2024-06-19

Calf and Mother				Fertility			
Birth Dir.	Birth Mat.	Wean Dir.	Wean Mat.	Scr. Circ.	Heifer Fert.	Cow Fert.	Longev.
101	101	88	107	-	89	84	77
33%	31%	56%	41%		26%	16%	35%

Post-Wean Growth			Frame			Carcass		
Post Wean	ADG	FCR	Mature Weight	Height	Length	EMA	Fat	Mar
88	-	-	-	-	-	-	-	-
53%								

Birth Weight	205D Weight	365D Weight	540D Weight	ADG Index	FCR Index	Scrotum	LH
-	213kg 100 (18)	310kg 101 (22)	392kg 102 (22)	-	-	- (B2)	-



Myostatin	
Q204X	Not Tested
NT821	Not Tested
F94L	Not Tested

SELLER REMARKS:

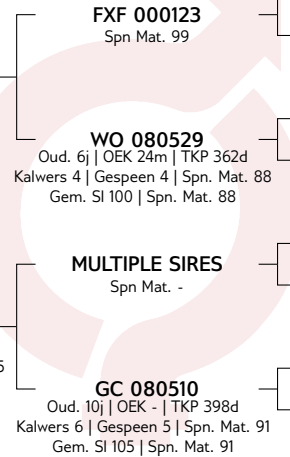
LOT 4 (M) BEEFMASTER GC 210025



Kuddeboek	C
Geb. dtm	2021-04-28
Oud.	3j 4m
Inteling	0%
DNS ZOCA202349065	

WO 130228
Spn Mat. 74

Ouerskap	Vaar	Moer
DNS	✓	
Genomies		



GERMAR BEEFMASTERS

Harrismith, Free State
0836313791
macampher@gmail.com

PRES STEYN STRAAT 3, HARRISMITH, 9880

KOEIWAARDE	90
101	Kalfgemak Waarde
105	Kalfgroei Waarde
92	Melk Waarde
94	Onderhoudswaarde
94	Vrugbaarheidswaarde
GROEI WAARDE	82
KARKAS WAARDE	88
PRODUKSIE WAARDE	83

LOGIX
GENETICS GENETICS
EBV Analyse 2024-06-19

Kalf en Moeder				Vrugbaarheid			
Geb. Dir.	Geb. Mat.	Spn. Dir.	Spn. Mat.	Skr. Omtr.	Vers Vrugb.	Koei Vrugb.	Lanklew.
100	100	105	92	89	90	108	93
66%	54%	66%	57%	36%	48%	31%	53%

Na-Speen Groei			Raam			Karkas		
Na-Speen	GDT	VOV	Volw. Gewig	Hoogte	Lengte	OSO	Vet	Mar
101	88	88	105	92	91	88	99	97
58%	33%	6%	36%	37%	36%	9%	8%	7%

Geb. Gewig	205D Gewig	365D Gewig	540D Gewig	GDT Indeks	VOV Indeks	Skrotum	LH
36kg	277kg 100 (20)	296kg 98 (17)	364kg 99 (20)	-	-	- (B2)	-



Miostatien	
Q204X	Nie Getoets
NT821	Nie Getoets
F94L	Nie Getoets

VERKOPER OPMERKINGS:

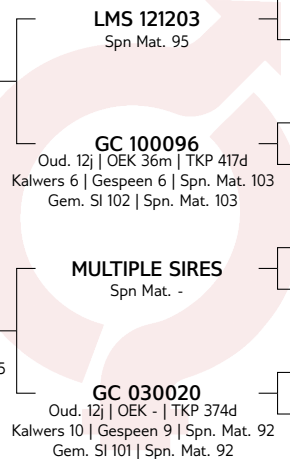
LOT 5 (M) BEEFMASTER CC 210093



Kuddeboek	C
Geb. dtm	2021-08-04
Oud.	3j
Inteling	0%
DNS ZOCA202467615	

CC 160138
Spn Mat. 96

Ouerskap	Vaar	Moer
DNS	✓	
Genomies		



SANDSPRUIT BEEFMASTERS

Ladysmith, Kwazulu Natal
0836313790
ansiac@gmail.com

POSBUS 2468, LADYSMITH, 3370

KOEIWAARDE	107
95	Kalfgemak Waarde
115	Kalfgroei Waarde
99	Melk Waarde
93	Onderhoudswaarde
101	Vrugbaarheidswaarde
GROEI WAARDE	-
KARKAS WAARDE	-
PRODUKSIE WAARDE	-

LOGIX
GENETICS GENETICS
EBV Analyse 2024-06-19

Kalf en Moeder				Vrugbaarheid			
Geb. Dir.	Geb. Mat.	Spn. Dir.	Spn. Mat.	Skr. Omtr.	Vers Vrugb.	Koei Vrugb.	Lanklew.
94	104	115	99	104	103	110	94
43%	31%	62%	45%	10%	32%	16%	41%

Na-Speen Groei			Raam			Karkas		
Na-Speen	GDT	VOV	Volw. Gewig	Hoogte	Lengte	OSO	Vet	Mar
116	105	-	105	112	107	-	-	-
58%	9%	-	8%	10%	10%	-	-	-

Geb. Gewig	205D Gewig	365D Gewig	540D Gewig	GDT Indeks	VOV Indeks	Skrotum	LH
-	256kg 112 (15)	330kg 114 (17)	424kg 114 (17)	-	-	- (B2)	-



Miostatien	
Q204X	Nie Getoets
NT821	Nie Getoets
F94L	Nie Getoets

VERKOPER OPMERKINGS:

LOT 6 (M) BEEFMASTER CC 210042

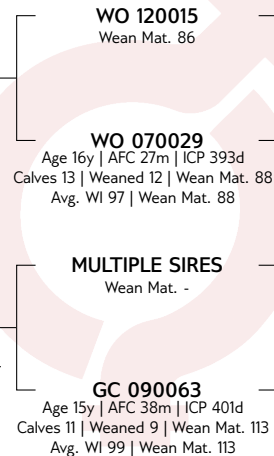


Herd Book	C
Birth date	2021-07-02
Age	3y 2m
Inbreeding	0%
DNA ZOCA202467601	

DR 169505
Wean Mat. 84

Parentage	Sire	Dam
DNA	✓	
Genomic		

CC 160039
Age 8y | AFC 36m | ICP 351d
Calves 4 | Weaned 3 | Wean Mat. 124
Avg. WI 104 | CCB - | CCW -
Calvings: 19-08, 20-08, 21-07, 22-07



WO 100172
WO 080032
Age 13y | Avg. WI 112
Calves 11 | Weaned 10
WO 030144
WO 050261
Age 14y | Avg. WI 100
Calves 13 | Weaned 11
GC 050002
Age 8y | Avg. WI 99
Calves 3 | Weaned 3

SANDSPRUIT BEEFMASTERS

Ladysmith, Kwazulu Natal
0836313790
ansiac@gmail.com

POSBUS 2468,,LADYSMITH, 3370

COW VALUE 89

105	Calving Ease Value
98	Calf Growth Value
102	Milk Value
92	Maintenance Value
90	Fertility Value

GROWTH VALUE -

CARCASS VALUE 102

PRODUCTION VALUE -

Birth Weight	205D Weight	365D Weight	540D Weight	ADG Index	FCR Index	Scrotum	LH
-	225kg 107 (18)	335kg 110 (22)	425kg 110 (22)	-	-	- (B2)	-

LOGIX
EBV Analysis 2024-06-19

Calf and Mother				Fertility			
Birth Dir.	Birth Mat.	Wean Dir.	Wean Mat.	Scr. Circ.	Heifer Fert.	Cow Fert.	Longev.
101	112	98	102	104	90	96	94
46%	34%	62%	46%	29%	38%	20%	44%

Post-Wean Growth			Frame			Carcass		
Post Wean	ADG	FCR	Mature Weight	Height	Length	EMA	Fat	Mar
99	102	99	106	103	105	101	111	94
57%	26%	7%	23%	30%	29%	8%	7%	7%



Myostatin	
Q204X	Not Tested
NT821	Not Tested
F94L	Not Tested

SELLER REMARKS:

LOT 8 (M) BEEFMASTER CC 210045

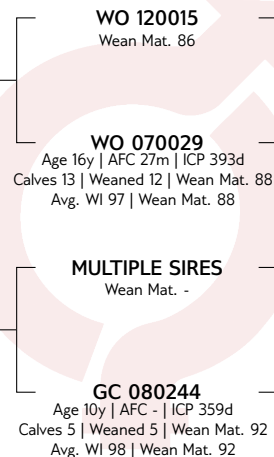


Herd Book	C
Birth date	2021-07-02
Age	3y 2m
Inbreeding	0%
DNA ZOCA202467603	

DR 169505
Wean Mat. 84

Parentage	Sire	Dam
DNA	✓	
Genomic		

CC 140077
Age 9y | AFC 34m | ICP 371d
Calves 7 | Weaned 5 | Wean Mat. 98
Avg. WI 100 | CCB - | CCW -
Calvings: 17-08, 18-09, 19-08, 20-08, 21-07, 22-10, 23-09



WO 100172
WO 080032
Age 13y | Avg. WI 112
Calves 11 | Weaned 10
WO 030144
WO 050261
Age 14y | Avg. WI 100
Calves 13 | Weaned 11

SANDSPRUIT BEEFMASTERS

Ladysmith, Kwazulu Natal
0836313790
ansiac@gmail.com

POSBUS 2468,,LADYSMITH, 3370

COW VALUE 91

103	Calving Ease Value
104	Calf Growth Value
92	Milk Value
96	Maintenance Value
94	Fertility Value

GROWTH VALUE 102

CARCASS VALUE 92

PRODUCTION VALUE 89

Birth Weight	205D Weight	365D Weight	540D Weight	ADG Index	FCR Index	Scrotum	LH
-	205kg 99 (6)	-	-	1103g/d 132 (24)	-	326mm (D2)	1.21

LOGIX
EBV Analysis 2024-06-19

Calf and Mother				Fertility			
Birth Dir.	Birth Mat.	Wean Dir.	Wean Mat.	Scr. Circ.	Heifer Fert.	Cow Fert.	Longev.
101	106	104	92	78	94	92	101
47%	39%	61%	47%	69%	37%	22%	43%

Post-Wean Growth			Frame			Carcass		
Post Wean	ADG	FCR	Mature Weight	Height	Length	EMA	Fat	Mar
105	94	87	102	85	89	87	104	94
49%	58%	7%	23%	71%	67%	8%	7%	7%



Myostatin	
Q204X	Not Tested
NT821	Not Tested
F94L	Not Tested

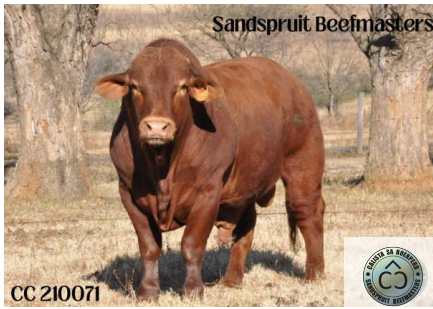
SELLER REMARKS:

LOT 9 (M)



BEEFMASTER
CATTLE BREEDERS' SOCIETY OF SA
BEESTELERSGENOOTSAP VAN SA

CC 210071



CC 210071

SANDSPRUIT BEEFMASTERS

Ladysmith, Kwazulu Natal
0836313790
ansiac@gmail.com

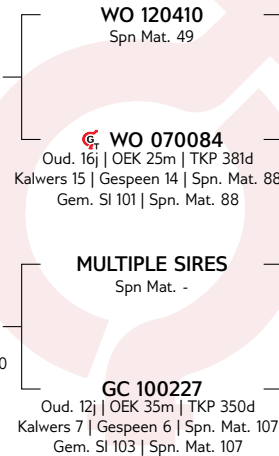
POSBUS 2468,,LADYSMITH, 3370

Kuddeboek	C
Geb. dtm	2021-08-03
Oud.	3j 1m
Inteling	0%
DNS ZOCA202467608	

Ouerskap	Vaar	Moer
DNS	✓	
Genomies		

WO 150236
Spn Mat. 64

CC 190034
Oud. 4j | OEK 27m | TKP -
Kalwers 1 | Gespeen 1 | Spn. Mat. 100
Gem. SI 102 | KKG - | KKS -
Kalwings: 21-08



KOEIWAARDE	80
99 Kalfgemak Waarde	
103 Kalfgroei Waarde	
83 Melk Waarde	
95 Onderhoudswaarde	
89 Vrugaarheidswaarde	
GROEI WAARDE	91
KARKAS WAARDE	95
PRODUKSIE WAARDE	77

LOGIX
GENETICS CENTRA
EBV Analyse 2024-06-19

Kalf en Moeder				Vrugaarheid			
Geb. Dir.	Geb. Mat.	Spn. Dir.	Spn. Mat.	Skr. Omtr.	Vers Vrugb.	Koei Vrugb.	Lanklew.
102	84	103	83	96	96	95	89
39%	34%	59%	42%	37%	31%	24%	43%

Na-Speen Groei			Raam			Karkas		
Na-Speen	GDT	VOV	Volw. Gewig	Hoogte	Lengte	OSO	Vet	Mar
106	99	103	104	95	94	97	109	76
42%	23%	18%	28%	25%	25%	18%	16%	16%

Geb. Gewig	205D Gewig	365D Gewig	540D Gewig	GDT Indeks	VOV Indeks	Skrotum	LH
-	241kg 102 (3)	285kg 104 (17)	373kg 106 (17)	-	-	- (B2)	-



Miostatien	
Q204X	Nie Getoets
NT821	Nie Getoets
F94L	Nie Getoets

VERKOPER OPMERKINGS:

LOT 10 (M)



BEEFMASTER
CATTLE BREEDERS' SOCIETY OF SA
BEESTELERSGENOOTSAP VAN SA

CC 210200



Sandspuit Beefmasters

SANDSPRUIT BEEFMASTERS

Ladysmith, Kwazulu Natal
0836313790
ansiac@gmail.com

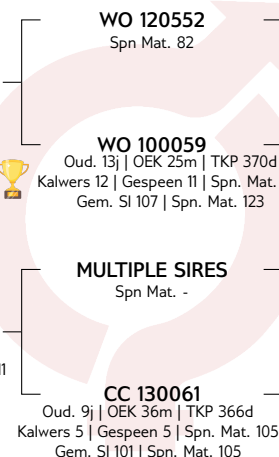
POSBUS 2468,,LADYSMITH, 3370

Kuddeboek	C
Geb. dtm	2021-07-02
Oud.	3j 2m
Inteling	0%
DNS ZOCA202467638	

Ouerskap	Vaar	Moer
DNS	✓	
Genomies		

WO 180068
Spn Mat. 100

CC 170085
Oud. 6j | OEK 35m | TKP 361d
Kalwers 3 | Gespeen 2 | Spn. Mat. 111
Gem. SI 103 | KKG - | KKS -
Kalwings: 20-07, 21-07, 22-06



KOEIWAARDE	-
101 Kalfgemak Waarde	
84 Kalfgroei Waarde	
113 Melk Waarde	
- Onderhoudswaarde	
84 Vrugaarheidswaarde	
GROEI WAARDE	-
KARKAS WAARDE	-
PRODUKSIE WAARDE	-

LOGIX
GENETICS CENTRA
EBV Analyse 2024-06-19

Kalf en Moeder				Vrugaarheid			
Geb. Dir.	Geb. Mat.	Spn. Dir.	Spn. Mat.	Skr. Omtr.	Vers Vrugb.	Koei Vrugb.	Lanklew.
101	98	84	113	-	93	99	78
15%	13%	52%	31%	-	24%	12%	28%

Na-Speen Groei			Raam			Karkas		
Na-Speen	GDT	VOV	Volw. Gewig	Hoogte	Lengte	OSO	Vet	Mar
86	-	-	-	-	-	-	-	-
48%								

Geb. Gewig	205D Gewig	365D Gewig	540D Gewig	GDT Indeks	VOV Indeks	Skrotum	LH
-	215kg 101 (18)	304kg 102 (22)	384kg 101 (22)	-	-	- (B2)	-



Miostatien	
Q204X	Nie Getoets
NT821	Nie Getoets
F94L	Nie Getoets

VERKOPER OPMERKINGS:

LOT 13 (M)



BEEFMASTER
CATTLE BREEDERS' SOCIETY OF SA
BEESTELERSGENOOTSAP VAN SA

CC 210073

Sandspruit Beefmasters



Herd Book	C
Birth date	2021-08-03
Age	3y 1m
Inbreeding	0%
DNA ZOCA202467609	

WO 180068
Wean Mat. 100

Parentage	Sire	Dam
DNA	✓	
Genomic		

WO 120552
Wean Mat. 82

WO 100059
Age 13y | AFC 25m | ICP 370d
Calves 12 | Weaned 11 | Wean Mat. 123
Avg. WI 107 | Wean Mat. 123

MULTIPLE SIRES
Wean Mat. -

WO 080415

WO 040108
Age 10y | Avg. WI 104
Calves 9 | Weaned 9

WO 080068

WO 080183
Age 15y | Avg. WI 110
Calves 7 | Weaned 6

MULTIPLE SIRES

GC 040037
Age 9y | Avg. WI 95
Calves 3 | Weaned 3

CC 150062
Age 8y | AFC 37m | ICP 343d
Calves 5 | Weaned 4 | Wean Mat. 105
Avg. WI 98 | CCB - | CCW -
Calvings: 18-09, 19-09, 20-09,
21-08, 22-06

GC 100123
Age 12y | AFC 36m | ICP 383d
Calves 8 | Weaned 8 | Wean Mat. 104
Avg. WI 100 | Wean Mat. 104

SANDSPRUIT BEEFMASTERS

Ladysmith, Kwazulu Natal
0836313790
ansiac@gmail.com

POSBUS 2468,,LADYSMITH, 3370

COW VALUE -

101	Calving Ease Value
79	Calf Growth Value
110	Milk Value
-	Maintenance Value
83	Fertility Value

GROWTH VALUE -

CARCASS VALUE -

PRODUCTION VALUE -

LOGIX
EBV Analysis 2024-06-19

Calf and Mother				Fertility			
Birth Dir.	Birth Mat.	Wean Dir.	Wean Mat.	Scr. Circ.	Heifer Fert.	Cow Fert.	Longev.
102	95	79	110	72	96	95	78
29%	22%	51%	33%	68%	25%	15%	27%

Post-Wean Growth			Frame			Carcass		
Post Wean	ADG	FCR	Mature Weight	Height	Length	EMA	Fat	Mar
81	71	-	-	58	73	-	-	-
34%	56%			70%	66%			

Birth Weight	205D Weight	365D Weight	540D Weight	ADG Index	FCR Index	Scrotum	LH
-	224kg 94 (3)	-	-	906g/d 108 (24)	-	347mm (D2)	1.23



Myostatin

Q204X	Not Tested
NT821	Not Tested
F94L	Not Tested

SELLER REMARKS:

LOT 14 (M)



BEEFMASTER
CATTLE BREEDERS' SOCIETY OF SA
BEESTELERSGENOOTSAP VAN SA

CC 210037

Sandspruit Beefmasters



Herd Book	C
Birth date	2021-07-02
Age	3y 2m
Inbreeding	0%
DNA ZOCA202467599	

DR 169505
Wean Mat. 84

Parentage	Sire	Dam
DNA	✓	
Genomic		

WO 120015
Wean Mat. 86

WO 070029
Age 16y | AFC 27m | ICP 393d
Calves 13 | Weaned 12 | Wean Mat. 88
Avg. WI 97 | Wean Mat. 88

MULTIPLE SIRES
Wean Mat. -

WO 100172

WO 080032
Age 13y | Avg. WI 112
Calves 11 | Weaned 10

WO 030144

WO 050261
Age 14y | Avg. WI 100
Calves 13 | Weaned 11

MULTIPLE SIRES

CC 130102
Age 10y | AFC 36m | ICP 353d
Calves 7 | Weaned 6 | Wean Mat. 97
Avg. WI 101 | CCB - | CCW -
Calvings: 16-11, 17-08, 18-06,
19-05, 20-05, 21-07, 22-09

GC 070180
Age 12y | AFC - | ICP 420d
Calves 8 | Weaned 8 | Wean Mat. 96
Avg. WI 101 | Wean Mat. 96

SANDSPRUIT BEEFMASTERS

Ladysmith, Kwazulu Natal
0836313790
ansiac@gmail.com

POSBUS 2468,,LADYSMITH, 3370

COW VALUE 91

107	Calving Ease Value
106	Calf Growth Value
91	Milk Value
94	Maintenance Value
92	Fertility Value

GROWTH VALUE -

CARCASS VALUE 98

PRODUCTION VALUE -

LOGIX
EBV Analysis 2024-06-19

Calf and Mother				Fertility			
Birth Dir.	Birth Mat.	Wean Dir.	Wean Mat.	Scr. Circ.	Heifer Fert.	Cow Fert.	Longev.
103	113	106	91	102	85	104	96
48%	41%	63%	49%	29%	37%	22%	46%

Post-Wean Growth			Frame			Carcass		
Post Wean	ADG	FCR	Mature Weight	Height	Length	EMA	Fat	Mar
107	99	94	104	100	100	97	108	96
58%	26%	7%	23%	30%	29%	8%	7%	7%

Birth Weight	205D Weight	365D Weight	540D Weight	ADG Index	FCR Index	Scrotum	LH
-	214kg 101 (18)	320kg 104 (22)	406kg 105 (22)	-	-	- (B2)	-

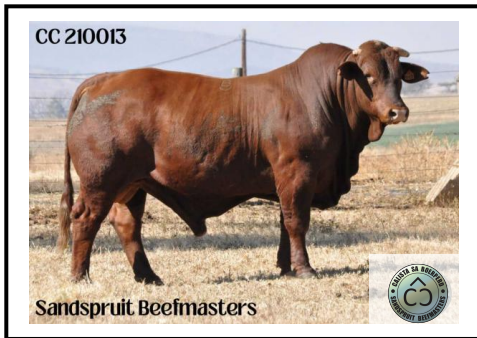


Myostatin

Q204X	Not Tested
NT821	Not Tested
F94L	Not Tested

SELLER REMARKS:

LOT 17 (M) BEEFMASTER CC 210013



Kuddeboek	C
Geb. dtm	2021-05-25
Oud.	3j 3m
Inteling	0%
DNS ZOCA202467594	

WO 150236
Spn Mat. 64

Ouerskap	Vaar	Moer
DNS	✓	
Genomies		

WO 120410
Spn Mat. 49

WO 070084
Oud. 16j | OEK 25m | TKP 381d
Kalwers 15 | Gespeen 14 | Spn. Mat. 88
Gem. SI 101 | Spn. Mat. 88

MULTIPLE SIRES
Spn Mat. -

WO 100172

WO 080298
Oud. 10j | Gem. SI 96
Kalwers 8 | Gespeen 8

WO 030042

WO 000199
Oud. 11j | Gem. SI 98
Kalwers 9 | Gespeen 7

MULTIPLE SIRES

GC 050111
Oud. 8j | Gem. SI 104
Kalwers 4 | Gespeen 4

CC 130129
Oud. 11j | OEK 34m | TKP 376d
Kalwers 8 | Gespeen 5 | Spn. Mat. 102
Gem. SI 98 | KKG - | KKS -
Kalwings: 16-06, 17-05, 18-05,
19-05, 20-05, 21-05, 22-05, 23-08

GC 100164
Oud. 5j | OEK 35m | TKP -
Kalwers 1 | Gespeen 1 | Spn. Mat. 108
Gem. SI 108 | Spn. Mat. 108

SANDSPRUIT BEEFMASTERS

Ladysmith, Kwazulu Natal
0836313790
ansiac@gmail.com

POSBUS 2468,,LADYSMITH, 3370

KOEIWAARDE 83

101	Kalfgemak Waarde
105	Kalfgroei Waarde
83	Melk Waarde
95	Onderhoudswaarde
92	Vrugbaarheidswaarde

GROEI WAARDE 95

KARKAS WAARDE 98

PRODUKSIE WAARDE 80

LOGIX
GENETICS CENTRA
EBV Analyse 2024-06-19

Kalf en Moeder				Vrugbaarheid			
Geb. Dir.	Geb. Mat.	Spn. Dir.	Spn. Mat.	Skr. Omtr.	Vers Vrugb.	Koei Vrugb.	Lanklew.
104	85	105	83	98	104	93	88
45%	36%	62%	48%	37%	38%	26%	45%

Na-Speen Groei			Raam			Karkas		
Na-Speen	GDT	VOV	Volw. Gewig	Hoogte	Lengte	OSO	Vet	Mar
108	102	105	104	97	97	99	109	78
58%	23%	18%	28%	25%	24%	18%	16%	16%

Geb. Gewig	205D Gewig	365D Gewig	540D Gewig	GDT Indeks	VOV Indeks	Skrotum	LH
-	241kg 99 (16)	332kg 103 (16)	415kg 105 (16)	-	-	- (B2)	-



Miostation

Q204X	Nie Getoets
NT821	Nie Getoets
F94L	Nie Getoets

VERKOPER OPMERKINGS:

LOT 18 (M) BEEFMASTER CC 210128



Kuddeboek	B
Geb. dtm	2021-09-15
Oud.	2j 11m
Inteling	0%
DNS ZOCA202467624	

MULTIPLE SIRES
Spn Mat. -

Ouerskap	Vaar	Moer
DNS		
Genomies		

MULTIPLE SIRES
Spn Mat. -

CC 130025
Oud. 10j | OEK 33m | TKP 381d
Kalwers 7 | Gespeen 5 | Spn. Mat. 100
Gem. SI 97 | KKG - | KKS -
Kalwings: 16-06, 17-05, 18-09,
19-09, 20-10, 21-09, 22-09

GC 070173
Oud. 13j | OEK - | TKP 371d
Kalwers 11 | Gespeen 11 | Spn. Mat. 87
Gem. SI 99 | Spn. Mat. 87

MULTIPLE SIRES

SANDSPRUIT BEEFMASTERS

Ladysmith, Kwazulu Natal
0836313790
ansiac@gmail.com

POSBUS 2468,,LADYSMITH, 3370

KOEIWAARDE -

98	Kalfgemak Waarde
97	Kalfgroei Waarde
104	Melk Waarde
-	Onderhoudswaarde
94	Vrugbaarheidswaarde

GROEI WAARDE -

KARKAS WAARDE -

PRODUKSIE WAARDE -

LOGIX
GENETICS CENTRA
EBV Analyse 2024-06-19

Kalf en Moeder				Vrugbaarheid			
Geb. Dir.	Geb. Mat.	Spn. Dir.	Spn. Mat.	Skr. Omtr.	Vers Vrugb.	Koei Vrugb.	Lanklew.
99	96	97	104	-	104	112	79
29%	23%	53%	36%	-	24%	14%	33%

Na-Speen Groei			Raam			Karkas		
Na-Speen	GDT	VOV	Volw. Gewig	Hoogte	Lengte	OSO	Vet	Mar
98	-	-	-	-	-	-	-	-
49%	-	-	-	-	-	-	-	-

Geb. Gewig	205D Gewig	365D Gewig	540D Gewig	GDT Indeks	VOV Indeks	Skrotum	LH
-	255kg 111 (15)	323kg 113 (16)	406kg 113 (16)	-	-	- (B2)	-



Miostation


Q204X	Nie Getoets
NT821	Nie Getoets
F94L	Nie Getoets

VERKOPER OPMERKINGS:

LOT 19 (M) BEEFMASTER CC 210191



Herd Book	C
Birth date	2021-07-02
Age	3y 2m
Inbreeding	0%
DNA ZOCA202467634	

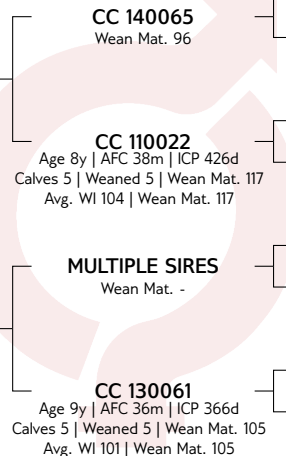


CC 170007 HH

Wean Mat. 107

Parentage	Sire	Dam
DNA	✓	
Genomic		

CC 180067
Age 5y | AFC 34m | ICP 387d
Calves 3 | Weaned 1 | Wean Mat. 101
Avg. WI 100 | CCB - | CCW -
Calvings: 21-07, 22-06, 23-08



SANDSPRUIT BEEFMASTERS

Ladysmith, Kwazulu Natal
0836313790
ansiac@gmail.com

POSBUS 2468,,LADYSMITH, 3370



Myostatin	
Q204X	Not Tested
NT82I	Not Tested
F94L	Not Tested

COW VALUE 100	
95	Calving Ease Value
101	Calf Growth Value
106	Milk Value
105	Maintenance Value
93	Fertility Value
GROWTH VALUE -	
CARCASS VALUE -	
PRODUCTION VALUE -	

Birth Weight	205D Weight	365D Weight	540D Weight	ADG Index	FCR Index	Scrotum	LH
-	212kg 100 (18)	295kg 100 (22)	374kg 100 (22)	-	-	- (B2)	-

SELLER REMARKS:

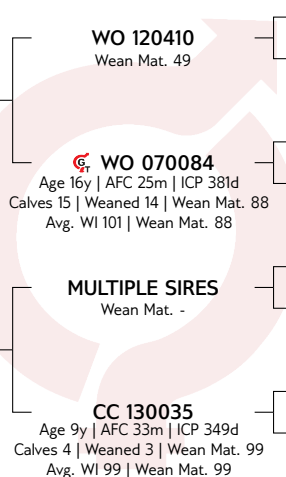
LOT 22 (M) BEEFMASTER CC 210183



Herd Book	C
Birth date	2021-07-02
Age	3y 2m
Inbreeding	0%
DNA ZOCA202467630	

WO 150236		
Wean Mat. 64		
Parentage	Sire	Dam
DNA	✓	
Genomic		

CC 170070
Age 7y | AFC 35m | ICP 383d
Calves 4 | Weaned 2 | Wean Mat. 107
Avg. WI 102 | CCB - | CCW -
Calvings: 20-05, 21-07, 22-07, 23-06



SANDSPRUIT BEEFMASTERS

Ladysmith, Kwazulu Natal
0836313790
ansiac@gmail.com

POSBUS 2468,,LADYSMITH, 3370



Myostatin	
Q204X	Not Tested
NT82I	Not Tested
F94L	Not Tested

COW VALUE 86	
98	Calving Ease Value
109	Calf Growth Value
83	Milk Value
92	Maintenance Value
96	Fertility Value
GROWTH VALUE 99	
CARCASS VALUE 103	
PRODUCTION VALUE 84	

Birth Weight	205D Weight	365D Weight	540D Weight	ADG Index	FCR Index	Scrotum	LH
-	236kg 113 (18)	335kg 113 (22)	424kg 112 (22)	-	-	- (B2)	-

SELLER REMARKS:

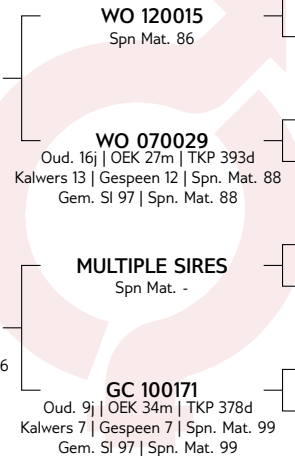
LOT 23 (M) BEEFMASTER CC 210044



Kuddeboek	C
Geb. dtm	2021-07-02
Oud.	3j 2m
Inteling	0%
DNS ZOCA202467602	

DR 169505
Spn Mat. 84

Ouerskap	Vaar	Moer
DNS	✓	
Genomies		



WO 100172	WO 080032
Oud. 13j Gem. SI 112	Kalwers 11 Gespeen 10
WO 030144	WO 050261
Oud. 14j Gem. SI 100	Kalwers 13 Gespeen 11
MDN 060120	GC 020029
	Oud. 15j Gem. SI 101
	Kalwers 11 Gespeen 11

SANDSPRUIT BEEFMASTERS

Ladysmith, Kwazulu Natal
0836313790
ansiac@gmail.com

POSBUS 2468, LADYSMITH, 3370

KOEIWAARDE	94
99	Kalfgemak Waarde
107	Kalfgroei Waarde
97	Melk Waarde
90	Onderhoudswaarde
96	Vrugbaarheidswaarde
GROEI WAARDE	-
KARKAS WAARDE	107
PRODUKSIE WAARDE	-

LOGIX
GENETICS
EBV Analyse 2024-06-19

Kalf en Moeder				Vrugbaarheid			
Geb. Dir.	Geb. Mat.	Spn. Dir.	Spn. Mat.	Skr. Omtr.	Vers Vrugb.	Koei Vrugb.	Lanklew.
96	116	107	97	102	90	109	96
46%	35%	61%	44%	32%	37%	23%	44%

Na-Speen Groei			Raam			Karkas		
Na-Speen	GDT	VOV	Volw. Gewig	Hoogte	Lengte	OSO	Vet	Mar
107	106	100	109	101	105	105	109	99
57%	28%	7%	23%	32%	31%	8%	7%	7%

Geb. Gewig	205D Gewig	365D Gewig	540D Gewig	GDT Indeks	VOV Indeks	Skrotum	LH
-	242kg 116 (18)	339kg 115 (22)	430kg 115 (22)	-	-	- (B2)	-



Miostatien	
Q204X	Nie Getoets
NT821	Nie Getoets
F94L	Nie Getoets

VERKOPER OPMERKINGS:

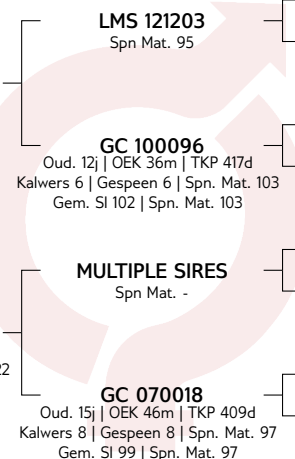
LOT 24 (M) BEEFMASTER CC 210031



Kuddeboek	C
Geb. dtm	2021-06-22
Oud.	3j 2m
Inteling	0%
DNS ZOCA202467598	

CC 160138
Spn Mat. 96

Ouerskap	Vaar	Moer
DNS	✓	
Genomies		



BOS 088210	BOS 077151
Oud. 7j Gem. SI 99	Kalwers 4 Gespeen 3
MULTIPLE SIRES	GC 040018
	Oud. 11j Gem. SI 100
	Kalwers 9 Gespeen 9
MULTIPLE SIRES	GC 020021
	Oud. 22j Gem. SI 99
	Kalwers 4 Gespeen 4

SANDSPRUIT BEEFMASTERS

Ladysmith, Kwazulu Natal
0836313790
ansiac@gmail.com

POSBUS 2468, LADYSMITH, 3370

KOEIWAARDE	97
94	Kalfgemak Waarde
108	Kalfgroei Waarde
106	Melk Waarde
94	Onderhoudswaarde
89	Vrugbaarheidswaarde
GROEI WAARDE	-
KARKAS WAARDE	-
PRODUKSIE WAARDE	-

LOGIX
GENETICS
EBV Analyse 2024-06-19

Kalf en Moeder				Vrugbaarheid			
Geb. Dir.	Geb. Mat.	Spn. Dir.	Spn. Mat.	Skr. Omtr.	Vers Vrugb.	Koei Vrugb.	Lanklew.
93	103	108	106	103	90	99	89
43%	30%	61%	42%	10%	31%	17%	41%

Na-Speen Groei			Raam			Karkas		
Na-Speen	GDT	VOV	Volw. Gewig	Hoogte	Lengte	OSO	Vet	Mar
110	104	-	104	111	107	-	-	-
56%	9%	-	8%	10%	10%	-	-	-

Geb. Gewig	205D Gewig	365D Gewig	540D Gewig	GDT Indeks	VOV Indeks	Skrotum	LH
-	274kg 114 (16)	371kg 117 (16)	454kg 116 (16)	-	-	- (B2)	-



Miostatien	
Q204X	Nie Getoets
NT821	Nie Getoets
F94L	Nie Getoets

VERKOPER OPMERKINGS:

LOT 26 (M) BEEFMASTER CC 210110



Sandspruit Beefmasters

SANDSPRUIT BEEFMASTERS

Ladysmith, Kwazulu Natal
0836313790
ansiac@gmail.com

POSBUS 2468,,LADYSMITH, 3370

Herd Book	C
Birth date	2021-08-25
Age	2y 12m
Inbreeding	0%
DNA ZOCA202467622	

WO 150236
Wean Mat. 64

Parentage	Sire	Dam
DNA	✓	
Genomic		

CC 150136
Age 8y | AFC 34m | ICP 372d
Calves 5 | Weaned 4 | Wean Mat. 110
Avg. WI 102 | CCB - | CCW -
Calvings: 18-08, 19-09, 20-09,
21-08, 22-08

WO 120410
Wean Mat. 49

WO 070084
Age 16y | AFC 25m | ICP 381d
Calves 15 | Weaned 14 | Wean Mat. 88
Avg. WI 101 | Wean Mat. 88

MULTIPLE SIRES
Wean Mat. -

GC 080240
Age 8y | AFC - | ICP 469d
Calves 5 | Weaned 5 | Wean Mat. 95
Avg. WI 98 | Wean Mat. 95

WO 100172

WO 080298
Age 10y | Avg. WI 96
Calves 9 | Weaned 8

WO 030042

WO 000199
Age 11y | Avg. WI 98
Calves 9 | Weaned 7

COW VALUE 91

101	Calving Ease Value
103	Calf Growth Value
87	Milk Value
97	Maintenance Value
102	Fertility Value

GROWTH VALUE 94

CARCASS VALUE 94

PRODUCTION VALUE 88

Birth Weight	205D Weight	365D Weight	540D Weight	ADG Index	FCR Index	Scrotum	LH
-	237kg 100 (10)	305kg 102 (10)	384kg 101 (10)	-	-	- (B2)	-

LOGIX
EBV Analysis 2024-06-19

Calf and Mother				Fertility			
Birth Dir.	Birth Mat.	Wean Dir.	Wean Mat.	Scr. Circ.	Heifer Fert.	Cow Fert.	Longev.
103	84	103	87	97	109	102	96
44%	35%	61%	47%	37%	37%	25%	44%

Post-Wean Growth			Frame			Carcass		
Post Wean	ADG	FCR	Mature Weight	Height	Length	EMA	Fat	Mar
105	100	102	102	95	94	96	107	78
56%	23%	18%	28%	25%	24%	18%	16%	16%



Myostatin

Q204X	Not Tested
NT821	Not Tested
F94L	Not Tested

SELLER REMARKS:

LOT 27 (M) BEEFMASTER CC 210141



Sandspruit Beefmasters

SANDSPRUIT BEEFMASTERS

Ladysmith, Kwazulu Natal
0836313790
ansiac@gmail.com

POSBUS 2468,,LADYSMITH, 3370

Herd Book	C
Birth date	2021-10-01
Age	2y 11m
Inbreeding	0%
DNA ZOCA202467627	

CC 130125
Wean Mat. 89

Parentage	Sire	Dam
DNA	✓	
Genomic		

CC 170054
Age 7y | AFC 35m | ICP 434d
Calves 3 | Weaned 2 | Wean Mat. 116
Avg. WI 102 | CCB - | CCW -
Calvings: 20-05, 21-10, 22-09

WO 100299
Wean Mat. 94

GC 100090
Age 7y | AFC 36m | ICP 546d
Calves 3 | Weaned 3 | Wean Mat. 92
Avg. WI 102 | Wean Mat. 92

MULTIPLE SIRES
Wean Mat. -

CC 140107
Age 9y | AFC 30m | ICP 480d
Calves 5 | Weaned 4 | Wean Mat. 108
Avg. WI 99 | Wean Mat. 108

4248

WO 010181
Age 11y | Avg. WI 109
Calves 10 | Weaned 7

MULTIPLE SIRES

GC 020052
Age 9y | Avg. WI 99
Calves 5 | Weaned 5

MULTIPLE SIRES

GC 100230
Age 7y | Avg. WI 100
Calves 4 | Weaned 4

COW VALUE 98

92	Calving Ease Value
106	Calf Growth Value
101	Milk Value
96	Maintenance Value
96	Fertility Value

GROWTH VALUE -

CARCASS VALUE -

PRODUCTION VALUE -

Birth Weight	205D Weight	365D Weight	540D Weight	ADG Index	FCR Index	Scrotum	LH
-	263kg 109 (19)	312kg 116 (19)	408kg 115 (19)	-	-	- (B2)	-

LOGIX
EBV Analysis 2024-06-19

Calf and Mother				Fertility			
Birth Dir.	Birth Mat.	Wean Dir.	Wean Mat.	Scr. Circ.	Heifer Fert.	Cow Fert.	Longev.
93	98	106	101	101	105	99	91
42%	27%	60%	39%	16%	31%	17%	42%

Post-Wean Growth			Frame			Carcass		
Post Wean	ADG	FCR	Mature Weight	Height	Length	EMA	Fat	Mar
110	100	-	102	109	105	-	-	-
56%	15%		14%	16%	16%			

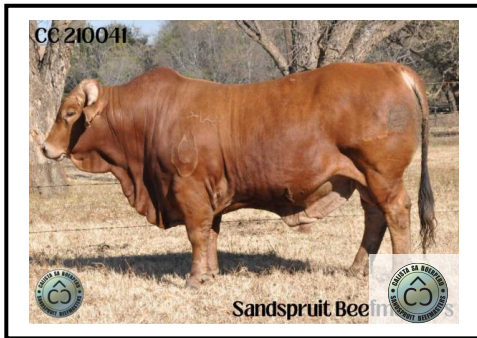


Myostatin

Q204X	Not Tested
NT821	Not Tested
F94L	Not Tested

SELLER REMARKS:

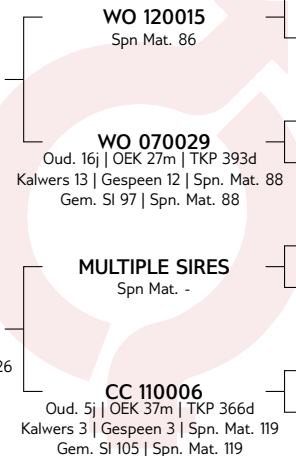
LOT 30 (M) BEEFMASTER CC 210041



Kuddeboek	C
Geb. dtm	2021-07-02
Oud.	3j 2m
Inteling	0%
DNS ZOCA202467600	

DR 169505
Spn Mat. 84

Ouerskap	Vaar	Moer
DNS	✓	
Genomies		



WO 100172	WO 080032	WO 030144	WO 050261
Oud. 13j Gem. SI 112	Oud. 13j Gem. SI 112	Oud. 14j Gem. SI 100	Oud. 14j Gem. SI 100
Kalwers 11 Gespeen 10	Kalwers 11 Gespeen 10	Kalwers 13 Gespeen 11	Kalwers 13 Gespeen 11
MULTIPLE SIRES	MULTIPLE SIRES	MULTIPLE SIRES	GC 070252
			Oud. 6j Gem. SI 101
			Kalwers 1 Gespeen 1

SANDSPRUIT BEEFMASTERS

Ladysmith, Kwazulu Natal
0836313790
ansiac@gmail.com

POSBUS 2468, LADYSMITH, 3370

KOEIWAARDE	101
89	Kalfgemak Waarde
116	Kalfgroei Waarde
102	Melk Waarde
86	Onderhoudswaarde
96	Vrugbaarheidswaarde
GROEI WAARDE	-
KARKAS WAARDE	114
PRODUKSIE WAARDE	-

LOGIX
GENETICS GENETICA
EBV Analyse 2024-06-19

Kalf en Moeder				Vrugbaarheid			
Geb. Dir.	Geb. Mat.	Spn. Dir.	Spn. Mat.	Skr. Omtr.	Vers Vrugb.	Koei Vrugb.	Lanklew.
88	109	116	102	113	90	110	96
46%	36%	61%	45%	29%	37%	22%	44%

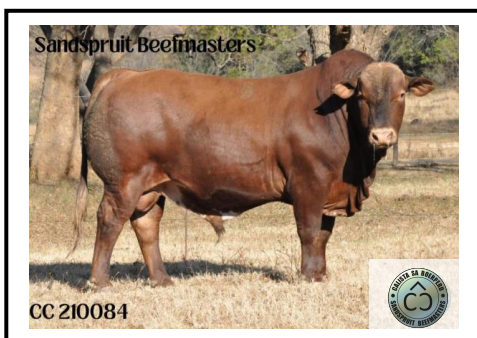
Na-Speen Groei			Raam			Karkas		
Na-Speen	GDT	VOV	Volw. Gewig	Hoogte	Lengte	OSO	Vet	Mar
117	113	110	114	114	116	112	112	103
56%	26%	7%	23%	30%	29%	8%	7%	7%



Miostatien	
Q204X	Nie Getoets
NT821	Nie Getoets
F94L	Nie Getoets

VERKOPER OPMERKINGS:

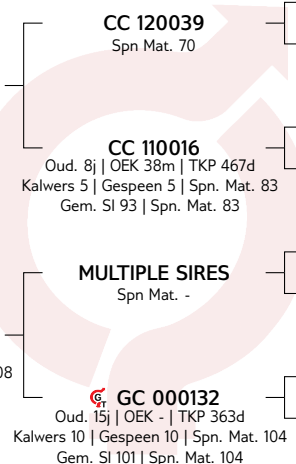
LOT 31 (M) BEEFMASTER CC 210084



Kuddeboek	C
Geb. dtm	2021-08-04
Oud.	3j
Inteling	0%
DNS ZOCA202467611	

CC 180124
Spn Mat. 75

Ouerskap	Vaar	Moer
DNS	✓	
Genomies		



BOS 033067	GC 070175	MULTIPLE SIRES	GC 040033
Oud. 8j Gem. SI 100	Oud. 8j Gem. SI 100		Oud. 11j Gem. SI 101
Kalwers 4 Gespeen 4	Kalwers 4 Gespeen 4		Kalwers 8 Gespeen 8

SANDSPRUIT BEEFMASTERS

Ladysmith, Kwazulu Natal
0836313790
ansiac@gmail.com

POSBUS 2468, LADYSMITH, 3370

KOEIWAARDE	92
102	Kalfgemak Waarde
102	Kalfgroei Waarde
91	Melk Waarde
99	Onderhoudswaarde
97	Vrugbaarheidswaarde
GROEI WAARDE	-
KARKAS WAARDE	-
PRODUKSIE WAARDE	-

LOGIX
GENETICS GENETICA
EBV Analyse 2024-06-19

Kalf en Moeder				Vrugbaarheid			
Geb. Dir.	Geb. Mat.	Spn. Dir.	Spn. Mat.	Skr. Omtr.	Vers Vrugb.	Koei Vrugb.	Lanklew.
102	100	102	91	95	105	99	93
42%	31%	59%	43%	5%	30%	16%	40%

Na-Speen Groei			Raam			Karkas		
Na-Speen	GDT	VOV	Volw. Gewig	Hoogte	Lengte	OSO	Vet	Mar
101	-	-	100	-	-	-	-	-
54%			6%					



Miostatien	
Q204X	Nie Getoets
NT821	Nie Getoets
F94L	Nie Getoets

VERKOPER OPMERKINGS:

LOT 32 (M) BEEFMASTER GC 210029



Amakosi beefmaster

GC 210029

GERMAR BEEFMASTERS

Harrismith, Free State
0836313791
macampher@gmail.com

PRES STEYN STRAAT 3, HARRISMITH, 9880

Herd Book	C
Birth date	2021-05-05
Age	3y 3m
Inbreeding	0%
DNA	ZGOCA20234906

GC 170050 HH
Wean Mat. 103

Parentage	Sire	Dam
DNA	✓	
Genomic		

GC 180141
Age 4y | AFC 30m | ICP -
Calves 1 | Weaned 1 | Wean Mat. 111
Avg. WI 107 | CCB - | CCW -
Calvings: 21-05

MULTIPLE SIRES
Wean Mat. -

GC 130072
Age 11y | AFC 29m | ICP 395d
Calves 8 | Weaned 6 | Wean Mat. 105
Avg. WI 97 | Wean Mat. 105

MULTIPLE SIRES
GC 09136
Age 6y | Avg. WI 103
Calves 3 | Weaned 3

MULTIPLE SIRES
Wean Mat. -

GC 130102
Age 5y | AFC 34m | ICP 438d
Calves 3 | Weaned 3 | Wean Mat. 101
Avg. WI 100 | Wean Mat. 101

MULTIPLE SIRES
GC 070205
Age 12y | Avg. WI 100
Calves 10 | Weaned 8

COW VALUE -

94	Calving Ease Value
95	Calf Growth Value
106	Milk Value
-	Maintenance Value
80	Fertility Value

GROWTH VALUE -

CARCASS VALUE -

PRODUCTION VALUE -

Birth Weight	205D Weight	365D Weight	540D Weight	ADG Index	FCR Index	Scrotum	LH
33kg	292kg 107 (20)	290kg 103 (17)	357kg 103 (20)	-	-	- (B2)	-

LOGIX
EBV Analysis 2024-06-19

Calf and Mother				Fertility			
Birth Dir.	Birth Mat.	Wean Dir.	Wean Mat.	Scr. Circ.	Heifer Fert.	Cow Fert.	Longev.
94	105	95	106	99	80	87	90
64%	41%	59%	35%	35%	28%	10%	36%

Post-Wean Growth			Frame			Carcass		
Post Wean	ADG	FCR	Mature Weight	Height	Length	EMA	Fat	Mar
99	105	-	-	104	103	-	-	-
44%	29%			36%	34%			



Myostatin

Q204X	Not Tested
NT821	Not Tested
F94L	Not Tested

SELLER REMARKS:

LOT 34 (M) BEEFMASTER CC 210077



Sandspuit Beefmasters

CC

SANDSPRUIT BEEFMASTERS

Ladysmith, Kwazulu Natal
0836313790
ansiac@gmail.com

POSBUS 2468, LADYSMITH, 3370

Herd Book	C
Birth date	2021-08-04
Age	3y
Inbreeding	0%
DNA	ZOCA202467610

GC 070065
Wean Mat. 95

Parentage	Sire	Dam
DNA	✓	
Genomic		

CC 160106
Age 7y | AFC 33m | ICP 383d
Calves 5 | Weaned 3 | Wean Mat. 110
Avg. WI 103 | CCB - | CCW -
Calvings: 19-08, 20-09, 21-08, 22-08, 23-10

MULTIPLE SIRES
Wean Mat. -

GC 020044
Age 11y | AFC - | ICP 368d
Calves 8 | Weaned 9 | Wean Mat. 75
Avg. WI 98 | Wean Mat. 75

MULTIPLE SIRES
Wean Mat. -

GC 080240
Age 8y | AFC - | ICP 469d
Calves 5 | Weaned 5 | Wean Mat. 95
Avg. WI 98 | Wean Mat. 95

COW VALUE 98

104	Calving Ease Value
98	Calf Growth Value
102	Milk Value
105	Maintenance Value
94	Fertility Value

GROWTH VALUE -

CARCASS VALUE -

PRODUCTION VALUE -

Birth Weight	205D Weight	365D Weight	540D Weight	ADG Index	FCR Index	Scrotum	LH
-	238kg 103 (15)	296kg 103 (17)	383kg 104 (17)	-	-	- (B2)	-

LOGIX
EBV Analysis 2024-06-19

Calf and Mother				Fertility			
Birth Dir.	Birth Mat.	Wean Dir.	Wean Mat.	Scr. Circ.	Heifer Fert.	Cow Fert.	Longev.
103	97	98	102	99	99	100	91
50%	30%	63%	42%	21%	25%	14%	48%

Post-Wean Growth			Frame			Carcass		
Post Wean	ADG	FCR	Mature Weight	Height	Length	EMA	Fat	Mar
99	92	-	95	93	90	-	-	-
60%	18%		7%	22%	21%			



Myostatin

Q204X	Not Tested
NT821	Not Tested
F94L	Not Tested

SELLER REMARKS:

LOT 35 (M) BEEFMASTER CC 210012

CC 210012



Sandspruit Beefmasters

Kuddeboek	B
Geb. dtm	2021-05-25
Oud.	3j 3m
Inteling	0%
DNS ZOCA202467593	

MULTIPLE SIRES
Spn Mat. -

Ouerskap	Vaar	Moer
DNS		
Genomies		

CC 180009
Oud. 5j | OEK 37m | TKP -
Kalwers 1 | Gespeen 1 | Spn. Mat. 112
Gem. SI 101 | KKG - | KKS -
Kalwings: 21-05

GC 100222
Oud. 13j | OEK 35m | TKP 398d
Kalwers 10 | Gespeen 8 | Spn. Mat. 102
Gem. SI 100 | Spn. Mat. 102

MULTIPLE SIRES
GC 07056A
Oud. 12j | Gem. SI 97
Kalwers 9 | Gespeen 9

SANDSPRUIT BEEFMASTERS

Ladysmith, Kwazulu Natal
0836313790
ansiac@gmail.com

POSBUS 2468,,LADYSMITH, 3370

KOEIWAARDE -

102	Kalfgemak Waarde
84	Kalfgroei Waarde
112	Melk Waarde
-	Onderhoudswaarde
82	Vrugbaarheidswaarde

GROEI WAARDE -

KARKAS WAARDE -

PRODUKSIE WAARDE -

LOGIX
GENETICS CENTRA
EBV Analyse 2024-06-19

Kalf en Moeder				Vrugbaarheid			
Geb. Dir.	Geb. Mat.	Spn. Dir.	Spn. Mat.	Skr. Omtr.	Vers Vrugb.	Koei Vrugb.	Lanklew.
101	99	84	112	87	100	89	76
16%	15%	51%	28%	6%	25%	7%	29%

Na-Speen Groei			Raam			Karkas		
Na-Speen	GDT	VOV	Volw. Gewig	Hoogte	Lengte	OSO	Vet	Mar
86	81	-	-	88	85	-	-	-
48%	5%			6%	6%			

Geb. Gewig	205D Gewig	365D Gewig	540D Gewig	GDT Indeks	VOV Indeks	Skrotum	LH
-	246kg 101 (16)	317kg 103 (16)	401kg 105 (16)	-	-	- (B2)	-



Miostatien

Q204X	Nie Getoets
NT821	Nie Getoets
F94L	Nie Getoets

VERKOPER OPMERKINGS:

LOT 38 (M) BEEFMASTER CC 210108

Sandspruit Beefmasters



SANDSPRUIT BEEFMASTERS

Ladysmith, Kwazulu Natal
0836313790
ansiac@gmail.com

POSBUS 2468,,LADYSMITH, 3370

Kuddeboek	C
Geb. dtm	2021-08-25
Oud.	2j 12m
Inteling	0%
DNS ZOCA202467621	

GC 070065
Spn Mat. 95

Ouerskap	Vaar	Moer
DNS	✓	
Genomies		

CC 180099
Oud. 5j | OEK 36m | TKP 386d
Kalwers 2 | Gespeen 1 | Spn. Mat. 109
Gem. SI 103 | KKG - | KKS -
Kalwings: 21-08, 22-09

MULTIPLE SIRES
Spn Mat. -

GC 020044
Oud. 11j | OEK - | TKP 368d
Kalwers 8 | Gespeen 9 | Spn. Mat. 75
Gem. SI 98 | Spn. Mat. 75

MULTIPLE SIRES
Spn Mat. -

CC 150085
Oud. 4j | OEK 36m | TKP -
Kalwers 1 | Gespeen 1 | Spn. Mat. 100
Gem. SI 101 | Spn. Mat. 100

MULTIPLE SIRES
GC 070210
Oud. 15j | Gem. SI 100
Kalwers 10 | Gespeen 10

LOGIX
GENETICS CENTRA
EBV Analyse 2024-06-19

Kalf en Moeder				Vrugbaarheid			
Geb. Dir.	Geb. Mat.	Spn. Dir.	Spn. Mat.	Skr. Omtr.	Vers Vrugb.	Koei Vrugb.	Lanklew.
97	102	96	102	98	104	104	89
50%	29%	61%	35%	21%	26%	9%	47%

Na-Speen Groei			Raam			Karkas		
Na-Speen	GDT	VOV	Volw. Gewig	Hoogte	Lengte	OSO	Vet	Mar
98	91	-	93	91	89	-	-	-
58%	18%		7%	22%	21%			

Geb. Gewig	205D Gewig	365D Gewig	540D Gewig	GDT Indeks	VOV Indeks	Skrotum	LH
-	242kg 103 (10)	292kg 102 (10)	377kg 103 (10)	-	-	- (B2)	-



Miostatien

Q204X	Nie Getoets
NT821	Nie Getoets
F94L	Nie Getoets

VERKOPER OPMERKINGS:

LOT 39 (M) BEEFMASTER CC 210048



Herd Book	C
Birth date	2021-07-02
Age	3y 2m
Inbreeding	0%
DNA ZOCA202467604	

WO 150236
Wean Mat. 64

Parentage	Sire	Dam
DNA	✓	
Genomic		

WO 120410
Wean Mat. 49

WO 070084
Age 16y | AFC 25m | ICP 381d
Calves 15 | Weaned 14 | Wean Mat. 88
Avg. WI 101 | Wean Mat. 88

MULTIPLE SIRES
Wean Mat. -

WO 100172

WO 080298
Age 10y | Avg. WI 96
Calves 9 | Weaned 8

WO 030042

WO 000199
Age 11y | Avg. WI 98
Calves 9 | Weaned 7

MULTIPLE SIRES

CC 130024
Age 10y | AFC 38m | ICP 357d
Calves 8 | Weaned 6 | Wean Mat. 105
Avg. WI 102 | CCB - | CCW -
Calvings: 16-11, 17-10, 18-11, 19-09,
20-08, 21-07, 22-05, 23-09

GC 040013
Age 13y | AFC - | ICP 417d
Calves 9 | Weaned 9 | Wean Mat. 91
Avg. WI 101 | Wean Mat. 91

LOGIX
EBV Analysis 2024-06-19

Calf and Mother				Fertility			
Birth Dir.	Birth Mat.	Wean Dir.	Wean Mat.	Scr. Circ.	Heifer Fert.	Cow Fert.	Longev.
106	85	105	85	92	96	85	98
47%	40%	62%	50%	37%	40%	26%	46%

Post-Wean Growth			Frame			Carcass		
Post Wean	ADG	FCR	Mature Weight	Height	Length	EMA	Fat	Mar
107	94	96	102	90	88	91	106	75
56%	23%	18%	28%	25%	24%	18%	16%	16%

COW VALUE	86
104	Calving Ease Value
105	Calf Growth Value
85	Milk Value
97	Maintenance Value
91	Fertility Value
GROWTH VALUE	90
CARCASS VALUE	89
PRODUCTION VALUE	82

Birth Weight	205D Weight	365D Weight	540D Weight	ADG Index	FCR Index	Scrotum	LH
-	203kg 97 (6)	308kg 100 (22)	393kg 101 (22)	-	-	- (B2)	-

SANDSPRUIT BEEFMASTERS

Ladysmith, Kwazulu Natal
0836313790
ansiac@gmail.com

POSBUS 2468, LADYSMITH, 3370



Myostatin	
Q204X	Not Tested
NT821	Not Tested
F94L	Not Tested

SELLER REMARKS:

LOT 40 (M) BEEFMASTER CC 210056



Herd Book	C
Birth date	2021-07-02
Age	3y 2m
Inbreeding	0%
DNA ZOCA202467606	

CC 160138
Wean Mat. 96

Parentage	Sire	Dam
DNA	✓	
Genomic		

LMS 121203
Wean Mat. 95

GC 100096
Age 12y | AFC 36m | ICP 417d
Calves 6 | Weaned 6 | Wean Mat. 103
Avg. WI 102 | Wean Mat. 103

MULTIPLE SIRES
Wean Mat. -

BOS 088210

BOS 077151
Age 7y | Avg. WI 99
Calves 4 | Weaned 3

MULTIPLE SIRES

GC 040018
Age 11y | Avg. WI 100
Calves 9 | Weaned 9

MULTIPLE SIRES

GC 090100
Age 5y | Avg. WI 109
Calves 2 | Weaned 2

CC 160102
Age 7y | AFC 30m | ICP 413d
Calves 4 | Weaned 3 | Wean Mat. 115
Avg. WI 104 | CCB - | CCW -
Calvings: 19-05, 20-05, 21-07,
22-10

CC 130087
Age 9y | AFC 36m | ICP 371d
Calves 5 | Weaned 5 | Wean Mat. 114
Avg. WI 100 | Wean Mat. 114

LOGIX
EBV Analysis 2024-06-19

Calf and Mother				Fertility			
Birth Dir.	Birth Mat.	Wean Dir.	Wean Mat.	Scr. Circ.	Heifer Fert.	Cow Fert.	Longev.
96	104	99	106	92	108	114	89
41%	24%	60%	41%	10%	32%	17%	39%

Post-Wean Growth			Frame			Carcass		
Post Wean	ADG	FCR	Mature Weight	Height	Length	EMA	Fat	Mar
101	91	-	98	97	93	-	-	-
54%	9%	-	8%	10%	10%	-	-	-

COW VALUE	102
97	Calving Ease Value
99	Calf Growth Value
106	Milk Value
100	Maintenance Value
101	Fertility Value
GROWTH VALUE	-
CARCASS VALUE	-
PRODUCTION VALUE	-

Birth Weight	205D Weight	365D Weight	540D Weight	ADG Index	FCR Index	Scrotum	LH
-	211kg 102 (6)	308kg 103 (22)	392kg 103 (22)	-	-	- (B2)	-

SANDSPRUIT BEEFMASTERS

Ladysmith, Kwazulu Natal
0836313790
ansiac@gmail.com

POSBUS 2468, LADYSMITH, 3370



Myostatin	
Q204X	Not Tested
NT821	Not Tested
F94L	Not Tested

SELLER REMARKS:

LOT 41 (M) BEEFMASTER CC 210103



Kuddeboek	C
Geb. dtm	2021-08-20
Oud.	3j
Inteling	0%
DNS ZOCA202467618	

GC 070065
Spn Mat. 95

Ouerskap	Vaar	Moer
DNS	✓	
Genomies		

MULTIPLE SIRES
Spn Mat. -

GC 020044
Oud. 11j | OEK - | TKP 368d
Kalwers 8 | Gespeen 9 | Spn. Mat. 75
Gem. SI 98 | Spn. Mat. 75

MULTIPLE SIRES
Spn Mat. -

GC 100154
Oud. 13j | OEK 35m | TKP 405d
Kalwers 9 | Gespeen 7 | Spn. Mat. 101
Gem. SI 99 | KKG - | KKS -
Kalwings: 13-08, 14-09, 15-08,
17-05, 18-12, 19-11, 20-10, 21-08,
22-06

GC 020022
Oud. 15j | OEK - | TKP 366d
Kalwers 11 | Gespeen 11 | Spn. Mat. 92
Gem. SI 99 | Spn. Mat. 92

SANDSPRUIT BEEFMASTERS

Ladysmith, Kwazulu Natal
0836313790
ansiac@gmail.com

POSBUS 2468, LADYSMITH, 3370

KOEIWAARDE 87

104	Kalfgemak Waarde
96	Kalfgroei Waarde
98	Melk Waarde
107	Onderhoudswaarde
84	Vrugbaarheidswaarde

GROEI WAARDE -

KARKAS WAARDE -

PRODUKSIE WAARDE -

LOGIX
GENETICS GENIUM
EBV Analise 2024-06-19

Kalf en Moeder				Vrugbaarheid			
Geb. Dir.	Geb. Mat.	Spn. Dir.	Spn. Mat.	Skr. Omtr.	Vers Vrugb.	Koei Vrugb.	Lanklew.
104	96	96	98	96	85	97	85
53%	40%	65%	46%	22%	28%	15%	52%

Na-Speen Groei			Raam			Karkas		
Na-Speen	GDT	VOV	Volw. Gewig	Hoogte	Lengte	OSO	Vet	Mar
99	89	-	94	90	88	-	-	-
62%	18%		7%	23%	21%			

Geb. Gewig	205D Gewig	365D Gewig	540D Gewig	GDT Indeks	VOV Indeks	Skrotum	LH
-	236kg 100 (10)	301kg 100 (10)	382kg 101 (10)	-	-	- (B2)	-



Miostation	
Q204X	Nie Getoets
NT821	Nie Getoets
F94L	Nie Getoets

VERKOPER OPMERKINGS:

LOT 42 (M) BEEFMASTER CC 210192



Kuddeboek	C
Geb. dtm	2021-09-01
Oud.	2j 12m
Inteling	0%
DNS ZOCA202406763	

CC 180063
Spn Mat. 113

Ouerskap	Vaar	Moer
DNS	✓	
Genomies		

MULTIPLE SIRES
Spn Mat. -

CC 150127
Oud. 8j | OEK 35m | TKP 346d
Kalwers 4 | Gespeen 4 | Spn. Mat. 120
Gem. SI 107 | Spn. Mat. 120

MULTIPLE SIRES
GC 100127
Oud. 5j | Gem. SI 100
Kalwers 3 | Gespeen 3

MULTIPLE SIRES
Spn Mat. -

CC 150032
Oud. 8j | OEK 37m | TKP 368d
Kalwers 5 | Gespeen 4 | Spn. Mat. 117
Gem. SI 101 | KKG - | KKS -
Kalwings: 18-09, 19-10, 20-10,
21-09, 22-09

GC 010157
Oud. 18j | OEK - | TKP 396d
Kalwers 12 | Gespeen 12 | Spn. Mat. 118
Gem. SI 99 | Spn. Mat. 118

SANDSPRUIT BEEFMASTERS

Ladysmith, Kwazulu Natal
0836313790
ansiac@gmail.com

POSBUS 2468, LADYSMITH, 3370

KOEIWAARDE -

95	Kalfgemak Waarde
92	Kalfgroei Waarde
116	Melk Waarde
-	Onderhoudswaarde
94	Vrugbaarheidswaarde

GROEI WAARDE -

KARKAS WAARDE -

PRODUKSIE WAARDE -

LOGIX
GENETICS GENIUM
EBV Analise 2024-06-19

Kalf en Moeder				Vrugbaarheid			
Geb. Dir.	Geb. Mat.	Spn. Dir.	Spn. Mat.	Skr. Omtr.	Vers Vrugb.	Koei Vrugb.	Lanklew.
96	97	92	116	93	96	108	88
40%	27%	59%	40%	8%	29%	14%	37%

Na-Speen Groei			Raam			Karkas		
Na-Speen	GDT	VOV	Volw. Gewig	Hoogte	Lengte	OSO	Vet	Mar
92	92	-	-	99	95	-	-	-
54%	7%			9%	8%			

Geb. Gewig	205D Gewig	365D Gewig	540D Gewig	GDT Indeks	VOV Indeks	Skrotum	LH
-	231kg 99 (15)	292kg 101 (16)	368kg 101 (16)	-	-	- (B2)	-



Miostation	
Q204X	Nie Getoets
NT821	Nie Getoets
F94L	Nie Getoets

VERKOPER OPMERKINGS:

Dier Info				Actual Values						Expected Breeding Values										Indices			Dam			
LOT	Animal ID	Sex	SEC	Birth Wt (kg)	205d Wt (kg)	CCB Ratio	CCW Ratio	Length Height Ratio	Scr. Circ. (mm)	Birth Dir (kg)	Birth Mat (kg)	Wean Dir (kg)	Wean Mat (kg)	Post Wean (kg)	Mature Weight. (kg)	ADG (g/d)	FCR (kg:kg)	Scr. Circ. (mm)	Height. (mm)	Length (mm)	Wean	ADG	Scr. Circ.	Avg. Wean Index	Nr. Calves	Repr. Index
Breed Average										0.05	0.14	10.7	-1.7	12	6	32	-12	7.3	-	7.0						
Auction Average				34	238	-	-	1.22	335	0.13	0.16	10.9	-1.9	15	6	22	-12	5.4	-1	4	104	120	96	102	5.0	96
2	CC 210029	M	C	-	259	-	-	-	-	0.47	0.20	15.7	-0.2	22.2	8.6	44	0	8.1	5	12	114	-	102	110	3	84
3	CC 210188	M	B	-	213	-	-	-	-	-0.02	0.12	4.5	0.2	4.1	0.0	0	0		0	0	100	-	-	97	9	94
4	GC 210025	M	C	36	277	-	-	-	-	0.04	0.13	13.2	-4.0	14.0	10.9	-8	1	1.8	-4	-1	100	-	89	101	7	92
5	CC 210093	M	C	-	256	-	-	-	-	0.54	-0.01	18.7	-2.1	25.7	11.1	49	0	9.3	7	13	112	-	104	102	6	101
6	CC 210042	M	C	-	225	-	-	-	-	-0.07	-0.27	9.8	-1.1	12.9	12.1	38	-11	9.3	2	11	107	-	104	104	4	94
8	CC 210045	M	C	-	205	-	-	1.21	330	-0.02	-0.06	12.9	-4.1	16.2	8.0	13	2	-4	-8	-3	99	132	78	100	7	110
9	CC 210071	M	C	-	241	-	-	-	-	-0.14	0.70	12.5	-6.4	17.4	9.6	30	-16	5.3	-2	2	102	-	96	102	1	97
10	CC 210200	M	C	-	215	-	-	-	-	-0.05	0.20	2.6	1.9	2.9	0.0	0	0		0	0	101	-	-	103	3	91
13	CC 210073	M	C	-	224	-	-	1.23	340	-0.09	0.30	-0.1	1.3	-1.0	0.0	-60	0	-7.5	-23	-18	94	108	72	98	5	99
14	CC 210037	M	C	-	214	-	-	-	-	-0.21	-0.30	14.1	-4.3	17.9	10.3	28	-6	8.1	0	7	101	-	102	101	7	103
17	CC 210013	M	C	-	241	-	-	-	-	-0.25	0.63	13.4	-6.5	18.8	10.2	39	-18	6.4	-1	4	99	-	98	98	8	110
18	CC 210128	M	B	-	255	-	-	-	-	0.13	0.26	8.9	-0.6	12.0	0.0	0	0		0	0	111	-	-	97	7	103
19	CC 210191	M	C	-	212	-	-	-	-	0.58	-0.08	11.3	-0.1	12.8	-0.2	0	0	4.9	0	2	100	-	95	100	3	103
22	CC 210183	M	C	-	236	-	-	-	-	-0.04	0.60	15.2	-6.4	21.4	14.4	56	-24	8.7	2	10	113	-	103	102	4	104
23	CC 210044	M	C	-	242	-	-	-	-	0.40	-0.42	14.2	-2.4	18.9	16.0	50	-13	8.4	1	12	116	-	102	110	4	109
24	CC 210031	M	C	-	274	-	-	-	-	0.59	0.03	14.8	0.1	21.5	10.0	46	0	8.8	6	13	114	-	103	108	4	82
26	CC 210110	M	C	-	237	-	-	-	-	-0.24	0.68	12.2	-5.3	15.8	7.9	31	-14	5.6	-2	1	100	-	97	102	5	98
27	CC 210141	M	C	-	263	-	-	-	-	0.63	0.20	13.9	-1.5	21.1	8.0	34	0	8	5	11	109	-	101	102	3	86
30	CC 210041	M	C	-	246	-	-	-	-	1.01	-0.17	19.1	-1.3	26.6	21.2	72	-23	13.9	8	21	119	-	113	106	5	98
31	CC 210084	M	C	-	239	-	-	-	-	-0.11	0.15	11.9	-4.3	13.9	5.1	0	0	4.7	0	0	103	-	95	102	5	97
32	GC 210029	M	C	33	292	-	-	-	-	0.56	-0.03	8.1	0.1	12.0	0.0	48	0	6.7	3	10	107	-	99	107	1	90
34	CC 210077	M	C	-	238	-	-	-	-	-0.23	0.23	9.6	-1.1	12.1	0.0	7	0	7	-4	-2	103	-	99	103	5	108
35	CC 210012	M	B	-	246	-	-	-	-	-0.06	0.18	2.2	1.8	3.5	0.0	-30	0	.7	-7	-7	101	-	87	101	1	52
38	CC 210108	M	C	-	242	-	-	-	-	0.28	0.08	8.6	-1.2	11.9	-1.6	2	0	6.2	-5	-3	103	-	98	103	2	87
39	CC 210048	M	C	-	203	-	-	-	-	-0.49	0.65	13.5	-5.9	18.1	7.6	14	-8	3.3	-6	-4	97	-	92	102	8	110

Dier Info				Werklike Syfers						Verwagte Teelwaardes										Indekse			Moeder			
LOT	Dier ID	Geslag	AFD	Geb. Gewig (kg)	205d Gewig (kg)	KKG Verh.	KKS Verh.	Lengte Hoogte Verh.	Skr. Omtr. (mm)	Geb Dir (kg)	Geb Mat (kg)	Spn Dir (kg)	Spn Mat (kg)	Na-Spn (kg)	Volw. Gewig (kg)	GDT (g/d)	VOV (kg:kg)	Skr. Omtr. (mm)	Hoogte (mm)	Lengte (mm)	Spn.	GDT	Skr. Omtr.	Gem. Spn. Indeks	Aant. Kalw.	Repr. Indeks
Ras Gemiddeld										0.05	0.14	10.7	-1.7	12	6	32	-12	7.3	-	7.0						
Aanbod Gemiddeld				34	238	-	-	1.22	335	0.13	0.16	10.9	-1.9	15	6	22	-12	5.4	-1	4	104	120	96	102	5.0	96
40	CC 210056	M	C	-	211	-	-	-	-	0.38	0.01	9.9	0.2	14.8	3.4	5	0	3.1	-1	0	102	-	92	104	4	97
41	CC 210103	M	C	-	236	-	-	-	-	-0.28	0.26	8.8	-2.2	11.6	-0.7	-2	0	5.3	-5	-4	100	-	96	99	9	96
42	CC 210192	M	C	-	231	-	-	-	-	0.39	0.25	6.4	2.7	7.1	0.0	6	0	3.6	-0	3	99	-	93	101	5	98

EXPLANATION OF CATALOGUE ABBREVIATIONS
VERDUIDELIKING VAN KATALOGUS AFKORTINGS

Lot Number	LOT	LOT	Lot Nommer
Estimated breeding value	EBV	EBV	Beraamde teelwaarde
Parentage verification	Parentage	Ouerskap	Ouerskap verifikasie
Age in years	AGE	OUDE.	Ouderdom in jaar
Age at First Calving	AFC	OEK	Ouderdom met Eerst Kalwing
Intercalving Period	ICP	TKP	Tussen-Kalf Periode
Number of calvings	Calvings	Kalwings	Aantal kalwings
Number of calves weaned	Weaned	Gespeen	Aantal kalwers gespeen
Average Wean index	Avg. WI	Gem. SI	Gemiddelde speen indeks
Animal identification number	ID	ID	Dier se identifikasie nommer
Herd Book Section	SEC	AFD	Kuddeboek Afdeling
Herd Book Section: Pending Registration	PEN	PEN	Kuddeboek Afdeling: Wag vir Registrasie
Herd Book Section: Not for Registration	NFR	NFR	Kuddeboek Afdeling: Nie vir Registrasie
Herd Book Section: Foundation Generation	FO	FO	Kuddeboek Afdeling: Fondasie Generasie
Herd Book Section: Appendix A	A	A	Kuddeboek Afdeling: Aanhangsel A
Herd Book Section: Appendix B	B	B	Kuddeboek Afdeling: Aanhangsel B
Herd Book Section: Studbook Proper, a registered animal	SP	SP	Kuddeboek Afdeling: Studbook Proper, 'n geregistreerde dier
Genomically Tested	GT	GT	Genomies Getoets
Homozygous Horned (Celtic test)	HH(c)	HH(c)	Homosigoties horings (Celtic toets)
Homozygous Polled (Celtic test)	PP(c)	PP(c)	Homosigoties Poena (Celtic toets)
Heterozygous Polled (Celtic test)	Pp(c)	Pp(c)	Heterosigoties Poena (Celtic toets)
Phenotypically Polled	P	P	Fenotopies Poena
Birth Direct breeding value	Birth Dir.	Geb. Dir	Geboorte Direk teelwaarde
Wean Direct breeding value	Wean Dir.	Spn. Dir.	Speen Direk teelwaarde
Wean Maternal breeding value	Wean Mat.	SPn. Mat.	Speen Maternaal teelwaarde
Scrotal Circumference	Scr. Circ.	Skr. Omt.	Skrotum omtrek
Heifer Fertility	Heifer Fert.	Vers Vrugh.	Vers Vrughbaarheid
Cow Fertility	Cow Fert.	Koei Vrugh.	Koei Vrughbaarheid
Longevity	Longev.	Lankl.	Lanklewendheid
Mature Weight	Mat. Wt.	Volw. Gewig	Volwasse gewig
Average Daily Gain (g/day)	ADG	GDT	Gemiddelde Daaglikse Toename
Feed Conversion Ratio (kg:kg)	FCR	VOV	Voeromset Verhouding
Eye Muscle Area	EMA	OSO	Oogspier grootte
Backfat Thickness	Fat	Vet	Rugvet Diepte
Marbeling (intra-muscular fat)	Mar	Mar	Marmering (binne-spiersse vet)
Actual Birth weight	Birth Wt.	Geb. gewig	Werklike Geboorte gewig
205-day Dam-age corrected weight	205d Wt.	205d gewig	205-dag Moeder-ouderdom gekorrigeerde gewig
365-day weight index	365D Index	365D Indeks	365-dae gewig indeks
540-day weight index	540D Index	540D Indeks	540-dae gewig indeks
Length-Height ratio	LH	LH	Lengte-Hoogte Verhouding
Cow-Calf Birth Ratio	CCG	KKG	Koei-Kalf Geboorte Verhouding
Cow-Calf Wean Ratio	CCW	KKS	Koei-Kalf Speen Verhouding
Average Weaning Index	Avg. WI	Gem. SI	Gemiddelde speen indeks
Number of Calves	Nr. Calves	Aant. Kalw.	Aantal kalwers
Reproduction Index	Repr. Index	Repr. Indeks	Reproduksie indeks
Animal sex: M - Male, F - Female	M / F	M / V	Dier geslag: M - Manlik, V - Vroulik

NOTAS

This image shows a single sheet of white paper with horizontal ruling lines. The lines are evenly spaced and run across the width of the page. There are no margins, text, or other markings on the paper.

RULES OF AUCTION
TERMS AND CONDITIONS

1. This auction will be held under the control of BKB Limited (hereinafter referred to as "the Auctioneer") with business premises situate at:
61 Grahamstown Road, North End, Port Elizabeth, 6001
2. The Auctioneer is hereby appointed by the Purchaser and Seller to act for and on behalf of the Purchaser and Seller as agent in accordance with Section 54 of the Value-Added Tax Act, 1991, in respect of all tax invoices, credit and/or debit notes in respect of all livestock, game and/or goods offered at the auction or any costs of transport and insurances premiums paid for on behalf of the Purchaser and Seller.
3. The rules of this auction shall comply with the provisions of Section 45 and all relevant regulations to the Consumer Protection Act 68 of 2008.
4. For greater clarity Section 45(1-4) states as follows:
 - 4.1 In this section, "auction" includes a sale in execution of or pursuant to a court order, to the extent that the order contemplates that the sale is to be conducted by an auction.
 - 4.2 When goods are put up for sale by auction, each lot is, unless there is evidence to the contrary, regarded to be the subject of a separate transaction.
 - 4.3 A sale by auction is complete when the auctioneer announces its completion by the fall of the hammer, or in any other customary manner, and until that announcement is made, a bid may be retracted.
 - 4.4 Notice must be given in advance that a lot or sale by auction is subject to:
 - 4.4.1 A reserved or upset price; or
 - 4.4.2 A right to bid by or on behalf of the owner or auctioneer, in which case the owner or auctioneer, or any one person on behalf of the owner or auctioneer, as the case may be, may bid at the auction.
5. Until the fall of the hammer as contemplated in Section 45(3) of the Act, any bid may be retracted or declined by the Auctioneer if not compliant with the regulations of the Consumer Protection Act.
6. The auction is not an absolute auction but subject to reserved prices settled by the sellers and as pointed out by the Auctioneer prior to the sale of the set asset or lot.
7. The auction shall take place at the date and time as advertised or publicised and will not be postponed or delayed to enable any member or group of the public to partake in the auction.
8. Should the Auctioneer become aware of any fault on advertising material or any other publication or amendment to these Rules of Auction, the Auctioneer will prior to the auction point out and when necessary amend such mistakes in the advertisement or publication.
9. Any person attending the auction to enter a bid, must prior to the auction register as a buyer on the bidders' roll and comply with the conditions as set out in Chapter 1 of FICA 2001. The purchaser shall sign the bidders' roll/card.
10. Any person who attends the auction to enter a bid on behalf of another person must be duly authorised thereto by means of a written letter of authority from its principal and such a person together with his principal must both register prior to the auction on the bidders' roll and provide all necessary information as required in Chapter 1 of the regulations issued in terms of FICA 2001 with regard to proof of its identity. The bidders' roll must be signed by such a person and on behalf of its principal.
11. Where the principal is a company the letters of authority shall appear on the letterhead of the company together with a certified copy of a resolution authorizing the person to bid on behalf of the company. (For purposes of this rule any reference to a company will include any reference to juristic person including partnerships, trusts or incorporated entities).
12. All purchasers have a right of inspection of all goods put up for sale and the auctioneer shall provide reasonable time and access prior to the start of the auction for such an inspection.
13. All livestock and goods are sold "voetstoots" and the purchasers do not enjoy the protection of Section 55 and 56 of the Consumer Protection Act.

14. Any information provided regarding the quality, breeding, age, date of insemination, condition, reproductive status or any information regarding health, production or mass or any other aspect of the livestock, is provided by the seller and any misrepresentation by the seller is without the cooperation or knowledge of the Auctioneer. Any right of recourse as a result of such misrepresentation shall be against the seller.
15. Any bid made does not include VAT which, where applicable, will be added to the bidding price for which a VAT invoice will be issued.
16. All sales are for cash and purchase price is payable immediately to the Auctioneer on acceptance of the bid unless otherwise arranged prior to the auction with the Auctioneer. Any payment made in cash is further subject to cash or any other handling fees. Should the Purchaser however fail to make payment within 7 days from date of delivery, BKB will be entitled to add interest calculated at the current bank prime rate plus 5% to the capital amount outstanding. The interest will be calculated monthly and capitalised.
17. Should the purchaser not pay the purchase price immediately and has failed to make arrangements for payment with the Auctioneer, then the Auctioneer can/will cancel the sale and treat the assets or lots as unsold lots which may again be presented on the auction for sale or be sold out of hand by means of liaison services, depending on the seller's mandate to the auctioneer.
18. Ownership in the lot or assets will remain that of the seller until the purchase price has been paid in full to the seller with the provision that the risk in the assets or lot passes to the purchaser at the fall of the hammer as set out in clause 24.
19. In the event that Purchaser has made necessary finance arrangements with BKB, the Purchaser hereby authorises BKB to pay the purchase price or costs of transport, insurance and any other agreed cost, minus BKB's commissions, on behalf of the Purchaser to the Seller and other service providers, in which event the said payment by BKB on behalf of the Purchaser will be deemed to be monies lent and advanced, the terms and conditions thereof being agreed with the Purchaser in a separate credit agreement or sale agreement. All payments made by BKB to the Seller on behalf of the Purchaser in terms of this clause will be made after the lapse of 5 (Five) working days from date of delivery of the asset to the Purchaser. Any payment made by BKB to the Seller prior to the lapse of the 5 (Five) working day period is made at the sole discretion of BKB and not an enforceable indulgence.
20. For as long as any amount is owing to BKB by the Purchaser, the Purchaser may not, where the assets are the subject of security of the Purchaser's credit facility with BKB, relinquish possession of the said asset, nor may he cede the asset or any of its rights and obligations in terms of this agreement to a third party or otherwise encumber, sell or dispossess the said asset or allow it to become the subject of any right of retention, hypothec, pledge or any encumbrance, whatever the cause thereof may be. BKB may be entitled to cede its rights and obligations without affecting its rights of recourse for any monies still due to it.
21. In the event of the Seller already being indebted to BKB or any of its affiliates at the time of this auction, the Seller hereby irrevocably authorises BKB to set off the purchase price due to the Seller by BKB (minus BKB's commission) against the amounts due by the Seller to BKB.
22. Where BKB, in terms of a credit agreement, lent and advanced monies to the Purchaser for payment of the purchase price of any asset or payment of any transport costs or insurance premiums, no defence of whatsoever nature which the Purchaser may raise against the Seller or the transport contractor or the insurance company may be raised against BKB and the Purchaser shall still be obligated to pay all amounts owing, together with further interest and costs thereon raised in terms of the credit agreement or sale agreement, to be BKB. The conditions of this clause do not interfere with the rights, entitlements or remedies the Purchaser may have against the Seller, transport contractor or insurance company.
23. Neither the Purchaser, nor the Seller, shall be entitled to apply set-off or to retain any monies owing arising from any claim they may have against each other or BKB with regards to any amount owing in terms hereof.
24. Each lot shall immediately after the fall of the hammer deemed to be delivered to the purchaser at which time the risk will pass to the purchaser who will at his own risk and cost remove the lots or assets from the auction terrain. Removal of any assets or lots however will not be allowed by the Auctioneer until payment of the purchase price by

the purchaser or acceptable arrangements for payment thereof have been made by the purchaser with the Auctioneer.

25. The Auctioneer will only be obliged to give reasons of the auction if such reasons are other than the voluntary sale of goods by its owners.
26. The bidders' roll and vendor roll will be available for inspection during the normal office hours at the business premises of the Auctioneer.
27. The rules of auction will only be read out at the auction if they were not available to the public at the place of business of the Auctioneer. In the event of livestock and game auctions, the rules of auction remain unchanged and are in general available at the business premises of the Auctioneer or on the website of the Auctioneer.
28. Under no circumstances will BKB be held liable for any loss or damage of any cause whatsoever albeit direct or indirect damages suffered by anyone if the livestock at the auction premises have to be placed under quarantine as a result of the presence of a livestock disease present. In such event BKB will have the right to cancel the auction as well as any already complete sales and no party will be entitled or have a right of recourse against BKB.
29. Any party requiring permits, removal certificate, documentation of identification or any other statutory prescribed document will solely be responsible for obtaining same. Any instructions to an auctioneer with regards to the loading, transporting, choice of transport contractors, insurance or choice of insurers will be executed at the sole risk of the person acquiring such services and the Auctioneer will not be held responsible for any losses whether direct or indirect which may be suffered as a result of giving effect to the instructions by the Auctioneer. The Auctioneer however does accept responsibility as contemplated in Section 35(2) of the Consumer Protection Act whilst the goods or lots are in the possession of the auctioneer. Any agreement entered into by the Auctioneer with a transport company or insurer is done so in its representative capacity of the seller or buyer. All transport costs or insurance premiums are therefore payable to the Auctioneer in cash except if acceptable alternative arrangements were made with the Auctioneer.
30. Both the seller and the buyer consent to the jurisdiction of the Magistrate's Court as contemplated in Section 45 of Act 32 of 1944 having regard to any action which the Auctioneer may institute against the buyer or seller irrespective of the cause of action. Notwithstanding the aforesaid the Auctioneer will have the sole and absolute discretion to institute action in any High Court with appropriate jurisdiction.
31. Any legal costs that BKB may have or will incur as a result of the non-compliance of the Purchaser and/or Seller in terms of its or their obligations herein, shall be recoverable by BKB, together with collection commissions from the Purchaser and/or Seller on a scale as between attorney and own client.
32. No variation, amendment, novation or addition to these terms and conditions will have the effect of BKB renouncing any of its rights in terms hereof, unless it is reduced to writing and signed by BKB.
33. No relaxation or indulgence by the Auctioneer must be interpreted as a waiver of any of the Auctioneer's rights in terms hereof. Such relaxation or indulgence must also not be interpreted as a novation hereof.
34. Should any condition be unlawful or become retrospectively unlawful, that unlawful condition shall be deemed to be amended to the extent and in the manner as is necessary to make it lawful or should such amendment be impossible, the unlawful conditions shall be deemed devisable from the remainder of the conditions and *pro non scripto*.
35. The cattle scale despite being calibrated, is not verified in terms of the Legal Metrology Act.
36. The weight as displayed for each lot is an unverified indication of average weight and may not be relied on for purposes of entering a bid.
37. All sales of livestock are sales per head of cattle and not per kilogram
38. Rules of auctions and terms and conditions in other languages can be asked for.



The Trusted Home of Agriculture
Die Betroubare Tuiste van Landbou

**Baie dankie vir u
ondersteuning!**