

**BLOUBERG SE1699B** **SE1699B** **Lot. 1**

**DRS BOERDERY, POSBUS 342 WARDEN 9890 TEL:27827719466** **SIMBRA**

Birth Date: 2016/09/20 DNA: 474262 U, SV Reg. Status: REG MALE/MANLIK  
 Age: 34 months Inspection Date: 2019/03/27  
 Herdbook: F2 Reg. No: 172345480  
 Horn: Disbudded



July 2019 South African Simbra GROUP BREEDPLAN EBVS Simbra SA - www.simbra.org / info@simbra.org / 051 446 0580/2

2019	BW	200	400	600	MCW	MILK	SC	DC	EMA	IMF%	RBY%	SFL	NG	SW
EBV	-0.9	+2	+8	+7	+8	-2	--	--	--	--	--	+71	+22	+14
ACC	73%	63%	60%	68%	54%	38%								
BREED	+1.2	+17	+24	+32	+35	+4	+0.7	-1.1	+0.1	+0.0	+0.1	+162	+70	+116

**S** **Seller's remarks / Verkoper se kommentaar:**  
 BAIE MOOI DONKER BRUIN BUL MET 'N SKROTUM OMTREK VAN 42CM. IDEAAL OM VERSE OOP TE MAAK. **R**

**LILA MXE16132C** **MXE16132C** **Lot. 2**

**JGF ERASMUS, POSBUS 189 WARDEN 9890 TEL:27825501075** **SIMBRA**

Birth Date: 2016/07/31 DNA: 474268 U, SV Reg. Status: REG MALE/MANLIK  
 Age: 36 months Inspection Date: 2019/03/27  
 Herdbook: F3 Reg. No: 172306276  
 Horn:



July 2019 South African Simbra GROUP BREEDPLAN EBVS Simbra SA - www.simbra.org / info@simbra.org / 051 446 0580/2

2019	BW	200	400	600	MCW	MILK	SC	DC	EMA	IMF%	RBY%	SFL	NG	SW
EBV	+1.1	+12	+14	+20	+19	+1	+0.0	--	--	--	--	+169	+64	+125
ACC	75%	72%	66%	72%	62%	44%	28%							
BREED	+1.2	+17	+24	+32	+35	+4	+0.7	-1.1	+0.1	+0.0	+0.1	+162	+70	+116

**S** **Seller's remarks / Verkoper se kommentaar:**  
 VOLROOI VERSBUL MET 'N SKROTUM OMTREK VAN 43CM. **R**

**LILA MXE16111C** **MXE16111C** **Lot. 3**

**JGF ERASMUS, POSBUS 189 WARDEN 9890 TEL:27825501075** **SIMBRA**

Birth Date: 2016/07/01 DNA: 497135 U, SV Reg. Status: REG MALE/MANLIK  
 Age: 37 months Inspection Date: 2019/03/27  
 Herdbook: F3 Reg. No: 172438517  
 Horn: Disbudded



July 2019 South African Simbra GROUP BREEDPLAN EBVS Simbra SA - www.simbra.org / info@simbra.org / 051 446 0580/2

2019	BW	200	400	600	MCW	MILK	SC	DC	EMA	IMF%	RBY%	SFL	NG	SW
EBV	+1.2	+19	+29	+36	+33	+4	--	--	--	--	--	+207	+96	+142
ACC	73%	67%	59%	61%	49%	36%								
BREED	+1.2	+17	+24	+32	+35	+4	+0.7	-1.1	+0.1	+0.0	+0.1	+162	+70	+116

**S** **Seller's remarks / Verkoper se kommentaar:**  
 BUL MET 'N SKROTUM OMTREK VAN 37CM. **R**

<b>BLOUBERG SE1691B</b>										<b>SE1691B</b>					<b>Lot. 4</b>	
DRS BOERDERY, POSBUS 342 WARDEN 9890 TEL:27827719466															SIMBRA	
Birth Date: 2016/08/22					DNA: 474260 U, SV					Reg. Status: REG					MALE/MANLIK	
Age: 35 months					Inspection Date: 2019/03/27					Reg. No: 172345357						
Herdbook: F2																
Horn:																
SIRE / VAAR:											DAM / MOER:	<b>SE0850A BLOUBERG SE0850A</b> Simbradex: 88 Calving dates: 11/03/25 12/09/07 13/08/27 14/08/20 15/09/01 ICP: 447 16/08/22 18/07/24				
July 2019 South African Simbra GROUP BREEDPLAN EBVS															Simbra SA - <a href="http://www.simbra.org">www.simbra.org</a> / <a href="mailto:info@simbra.org">info@simbra.org</a> / 051 446 0580/2	
<b>2019</b>	<b>BW</b>	<b>200</b>	<b>400</b>	<b>600</b>	<b>MCW</b>	<b>MILK</b>	<b>SC</b>	<b>DC</b>	<b>EMA</b>	<b>IMF%</b>	<b>RBY%</b>	<b>SFL</b>	<b>NG</b>	<b>SW</b>		
EBV	+1.1	+11	+22	+27	+26	+0	--	--	--	--	--	+143	+70	+63		
ACC	72%	67%	61%	69%	60%	39%										
BREED	+1.2	+17	+24	+32	+35	+4	+0.7	-1.1	+0.1	+0.0	+0.1	+162	+70	+116		
<b>Seller's remarks / Verkoper se kommentaar:</b> TOP BUL. POTENSILE STOETBUL MET 'N SKROTUM OMTREK VAN 48CM. BAIE VLEIS.															R	

<b>BLOUBERG SE1683B</b>										<b>SE1683B</b>					<b>Lot. 5</b>	
DRS BOERDERY, POSBUS 342 WARDEN 9890 TEL:27827719466															SIMBRA	
Birth Date: 2016/08/16					DNA: 474265 U, SV					Reg. Status: REG					MALE/MANLIK	
Age: 35 months					Inspection Date: 2019/03/27					Reg. No: 172345266						
Herdbook: F2																
Horn: Disbudded																
SIRE / VAAR:											DAM / MOER:	<b>SE07100A BLOUBERG SE07100A</b> Simbradex: 87 Calving dates: 10/09/26 12/08/27 13/09/30 14/08/14 15/08/29 ICP: 412 16/08/16 17/08/08 18/08/18				
July 2019 South African Simbra GROUP BREEDPLAN EBVS															Simbra SA - <a href="http://www.simbra.org">www.simbra.org</a> / <a href="mailto:info@simbra.org">info@simbra.org</a> / 051 446 0580/2	
<b>2019</b>	<b>BW</b>	<b>200</b>	<b>400</b>	<b>600</b>	<b>MCW</b>	<b>MILK</b>	<b>SC</b>	<b>DC</b>	<b>EMA</b>	<b>IMF%</b>	<b>RBY%</b>	<b>SFL</b>	<b>NG</b>	<b>SW</b>		
EBV	-1.2	+7	+15	+21	+32	+4	--	--	--	--	--	+116	+38	+52		
ACC	73%	68%	62%	70%	62%	48%										
BREED	+1.2	+17	+24	+32	+35	+4	+0.7	-1.1	+0.1	+0.0	+0.1	+162	+70	+116		
<b>Seller's remarks / Verkoper se kommentaar:</b> KLIP HARDE BUL, OOK OP VERSE. HET 'N SKROTUM OMTREK VAN 36CM.															R	

<b>LILA MXE16103C</b>										<b>MXE16103C</b>					<b>Lot. 6</b>	
JGF ERASMUS, POSBUS 189 WARDEN 9890 TEL:27825501075															SIMBRA	
Birth Date: 2016/06/12					DNA: 474267 U, SV					Reg. Status: REG					MALE/MANLIK	
Age: 38 months					Inspection Date: 2019/03/27					Reg. No: 172306003						
Herdbook: F3																
Horn:																
SIRE / VAAR:											DAM / MOER:	<b>MXE1390B LILA MXE1390B</b> Simbradex: 97 Calving dates: 16/06/12 17/07/07 ICP: 390				
July 2019 South African Simbra GROUP BREEDPLAN EBVS															Simbra SA - <a href="http://www.simbra.org">www.simbra.org</a> / <a href="mailto:info@simbra.org">info@simbra.org</a> / 051 446 0580/2	
<b>2019</b>	<b>BW</b>	<b>200</b>	<b>400</b>	<b>600</b>	<b>MCW</b>	<b>MILK</b>	<b>SC</b>	<b>DC</b>	<b>EMA</b>	<b>IMF%</b>	<b>RBY%</b>	<b>SFL</b>	<b>NG</b>	<b>SW</b>		
EBV	+1.3	+18	+31	+38	+35	+3	--	--	--	--	--	+229	+102	+134		
ACC	73%	67%	64%	63%	54%	35%										
BREED	+1.2	+17	+24	+32	+35	+4	+0.7	-1.1	+0.1	+0.0	+0.1	+162	+70	+116		
<b>Seller's remarks / Verkoper se kommentaar:</b> BUL MET BAIE GOEIE SYFERS. LANG LYF. SKROTUM OMTREK 43CM. HET DIE BUL AL SELF GEBRUIK.															R	

**LILA MXE1723B** **MXE1723B** **Lot. 7**

JGF ERASMUS, POSBUS 189 WARDEN 9890 TEL:27825501075 SIMBRA

Birth Date: 2017/03/03 DNA: 474274 U, SV Reg. Status: REG MALE/MANLIK  
Age: 29 months Inspection Date: 2019/03/27  
Herdbook: F2 Reg. No: 172373110  
Horn: Horned



July 2019 South African Simbra GROUP BREEDPLAN EBVS Simbra SA - www.simbra.org / info@simbra.org / 051 446 0580/2

2019	BW	200	400	600	MCW	MILK	SC	DC	EMA	IMF%	RBY%	SFL	NG	SW
EBV	+0.5	+16	+29	+43	+47	+5	--	--	--	--	--	+227	+103	+121
ACC	73%	69%	67%	65%	56%	46%								
BREED	+1.2	+17	+24	+32	+35	+4	+0.7	-1.1	+0.1	+0.0	+0.1	+162	+70	+116

**S** Seller's remarks / Verkoper se kommentaar:  
JONGER BUL MET STOET POTENSIAAL. DIT IS 'N TROTSE BUL MET 'N SKROTUM OMTREK VAN 42CM. R \_\_\_\_\_

**LILA MXE1639B** **MXE1639B** **Lot. 8**

JGF ERASMUS, POSBUS 189 WARDEN 9890 TEL:27825501075 SIMBRA

Birth Date: 2016/03/09 DNA: 497133 U, SV Reg. Status: REG MALE/MANLIK  
Age: 41 months Inspection Date: 2019/03/27  
Herdbook: F2 Reg. No: 172242802  
Horn:



July 2019 South African Simbra GROUP BREEDPLAN EBVS Simbra SA - www.simbra.org / info@simbra.org / 051 446 0580/2

2019	BW	200	400	600	MCW	MILK	SC	DC	EMA	IMF%	RBY%	SFL	NG	SW
EBV	+0.3	+14	+24	+34	+36	+5	--	--	--	--	--	+159	+77	+95
ACC	71%	67%	58%	58%	47%	40%								
BREED	+1.2	+17	+24	+32	+35	+4	+0.7	-1.1	+0.1	+0.0	+0.1	+162	+70	+116

**S** Seller's remarks / Verkoper se kommentaar:  
HIERDIE BUL HET 'N SKROTUM OMTREK VAN 43CM. R \_\_\_\_\_

**LILA MXE16106** **MXE16106** **Lot. 9**

JGF ERASMUS, POSBUS 189 WARDEN 9890 TEL:27825501075 SIMBRA

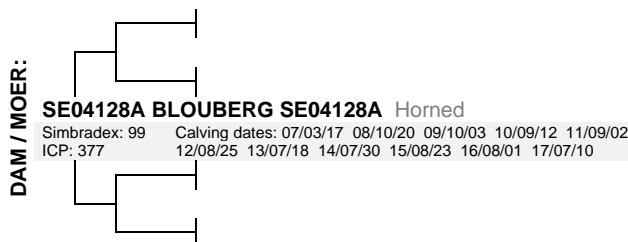
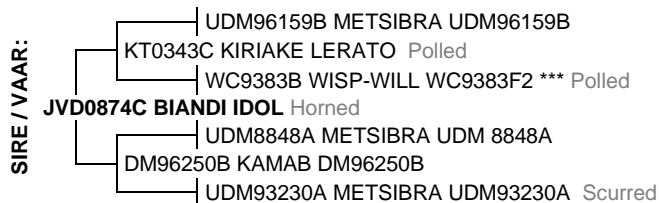
Birth Date: 2016/06/21 DNA: 497134 U, SV Reg. Status: REG MALE/MANLIK  
Age: 37 months Inspection Date: 2019/03/27  
Herdbook: SP Reg. No: 172306045  
Horn:



July 2019 South African Simbra GROUP BREEDPLAN EBVS Simbra SA - www.simbra.org / info@simbra.org / 051 446 0580/2

2019	BW	200	400	600	MCW	MILK	SC	DC	EMA	IMF%	RBY%	SFL	NG	SW
EBV	+1.6	+17	+31	+41	+39	+6	--	--	--	--	--	+229	+104	+129
ACC	73%	68%	64%	63%	54%	36%								
BREED	+1.2	+17	+24	+32	+35	+4	+0.7	-1.1	+0.1	+0.0	+0.1	+162	+70	+116

**S** Seller's remarks / Verkoper se kommentaar:  
SKROTUM OMTREK VAN 41CM. R \_\_\_\_\_

**BLOUBERG SE1668B****SE1668B****Lot. 11****DRS BOERDERY, POSBUS 342 WARDEN 9890 TEL:27827719466****SIMBRA****Birth Date:** 2016/08/01 **DNA:** 474264 U, SV**Reg. Status:** REG**MALE/MANLIK****Age:** 36 months**Inspection Date:** 2019/03/27**Herdbook:** F2**Reg. No:** 172345084**Horn:** Disbudded

July 2019 South African Simbra GROUP BREEDPLAN EBVS

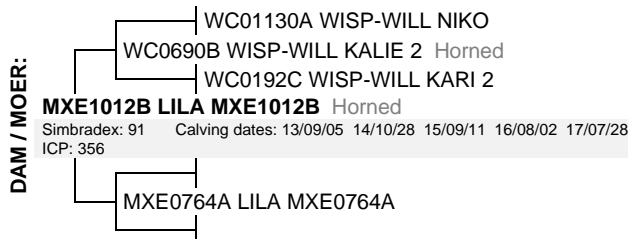
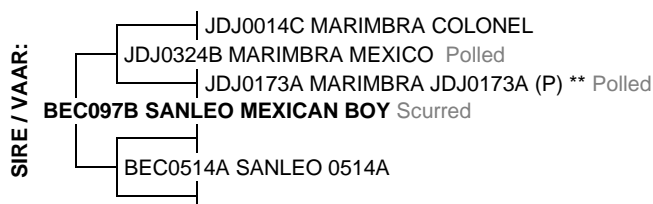
Simbra SA - [www.simbra.org](http://www.simbra.org) / [info@simbra.org](mailto:info@simbra.org) / 051 446 0580/2

2019	BW	200	400	600	MCW	MILK	SC	DC	EMA	IMF%	RBY%	SFL	NG	SW
EBV	-1.1	+8	+12	+17	+21	+2	+0.5	--	--	--	--	+139	+51	+89
ACC	74%	68%	63%	69%	57%	46%	26%							
BREED	+1.2	+17	+24	+32	+35	+4	+0.7	-1.1	+0.1	+0.0	+0.1	+162	+70	+116

**Seller's remarks / Verkoper se kommentaar:**

VOLROOI GEBALANSEERDE BUL. REG VIR VERSE. HET 'N 36CM SKROTUM OMTREK.

R

**LILA MXE16134C****MXE16134C****Lot. 12****JGF ERASMUS, POSBUS 189 WARDEN 9890 TEL:27825501075****SIMBRA****Birth Date:** 2016/08/02 **DNA:** 474272 U, SV**Reg. Status:** REG**MALE/MANLIK****Age:** 36 months**Inspection Date:** 2019/03/27**Herdbook:** F3**Reg. No:** 172306318**Horn:** Horned

July 2019 South African Simbra GROUP BREEDPLAN EBVS

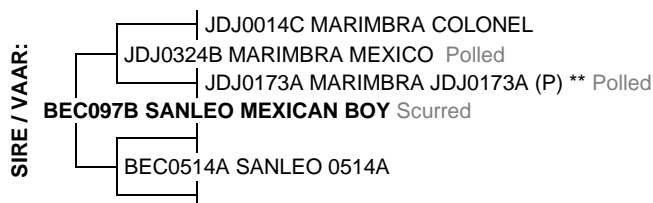
Simbra SA - [www.simbra.org](http://www.simbra.org) / [info@simbra.org](mailto:info@simbra.org) / 051 446 0580/2

2019	BW	200	400	600	MCW	MILK	SC	DC	EMA	IMF%	RBY%	SFL	NG	SW
EBV	+2.0	+12	+16	+21	+21	+0	+0.0	--	--	--	--	+98	+49	+72
ACC	74%	71%	65%	71%	61%	42%	28%							
BREED	+1.2	+17	+24	+32	+35	+4	+0.7	-1.1	+0.1	+0.0	+0.1	+162	+70	+116

**Seller's remarks / Verkoper se kommentaar:**

GOEIE BUL MET 'N SKROTUM OMTREK VAN 39CM.

R

**LILA MXE16127C****MXE16127C****Lot. 13****JGF ERASMUS, POSBUS 189 WARDEN 9890 TEL:27825501075****SIMBRA****Birth Date:** 2016/07/27 **DNA:** 474273 U, SV**Reg. Status:** REG**MALE/MANLIK****Age:** 36 months**Inspection Date:** 2019/03/27**Herdbook:** F3**Reg. No:** 172306227**Horn:**

July 2019 South African Simbra GROUP BREEDPLAN EBVS

Simbra SA - [www.simbra.org](http://www.simbra.org) / [info@simbra.org](mailto:info@simbra.org) / 051 446 0580/2

2019	BW	200	400	600	MCW	MILK	SC	DC	EMA	IMF%	RBY%	SFL	NG	SW
EBV	+3.3	+15	+20	+25	+19	+1	-0.1	--	--	--	--	+136	+66	+102
ACC	74%	71%	65%	71%	61%	39%	27%							
BREED	+1.2	+17	+24	+32	+35	+4	+0.7	-1.1	+0.1	+0.0	+0.1	+162	+70	+116

**Seller's remarks / Verkoper se kommentaar:**

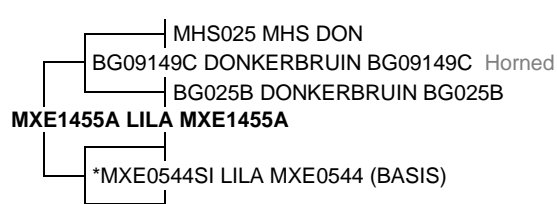


SOLID, MET GOEIE VLEIS EIENSKAPPE. DIE BUL HET 'N SKROTUM OMTREK VAN 36CM.

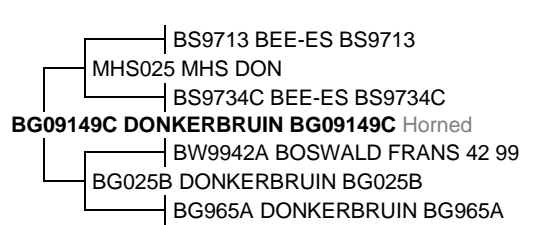


R




<b>LILA MXE16154B</b>										<b>MXE16154B</b>					<b>Lot. 15</b>	
JGF ERASMUS, POSBUS 189 WARDEN 9890 TEL:27825501075													SIMBRA			
Birth Date: 2016/08/21			DNA: 497137 U, SV			Reg. Status: REG					MALE/MANLIK					
Age: 35 months						Inspection Date: 2019/03/27					Reg. No: 172306490					
Herdbook: F2																
Horn:																
<b>SIRE / VAAR:</b>											<b>DAM / MOER:</b>					
July 2019 South African Simbra GROUP BREEDPLAN EBVS													Simbra SA - <a href="http://www.simbra.org">www.simbra.org</a> / <a href="mailto:info@simbra.org">info@simbra.org</a> / 051 446 0580/2			
<b>2019</b>	<b>BW</b>	<b>200</b>	<b>400</b>	<b>600</b>	<b>MCW</b>	<b>MILK</b>	<b>SC</b>	<b>DC</b>	<b>EMA</b>	<b>IMF%</b>	<b>RBY%</b>	<b>SFL</b>	<b>NG</b>	<b>SW</b>		
EBV	+2.3	+15	+24	+37	+40	+5	--	--	--	--	--	+145	+78	+88		
ACC	74%	70%	61%	62%	52%	47%										
BREED	+1.2	+17	+24	+32	+35	+4	+0.7	-1.1	+0.1	+0.0	+0.1	+162	+70	+116		
<b>Seller's remarks / Verkoper se kommentaar:</b> BUL MET 'N SKROTUM OMTREK VAN 39CM.													<b>R</b>			

<b>BLOUBERG SE1685B</b>										<b>SE1685B</b>					<b>Lot. 16</b>	
DRS BOERDERY, POSBUS 342 WARDEN 9890 TEL:27827719466													SIMBRA			
Birth Date: 2016/08/17			DNA: 474263 U, SV			Reg. Status: REG					MALE/MANLIK					
Age: 35 months						Inspection Date: 2019/03/27					Reg. No: 172345282					
Herdbook: F2																
Horn: Disbudded																
<b>SIRE / VAAR:</b>											<b>DAM / MOER:</b>					
July 2019 South African Simbra GROUP BREEDPLAN EBVS													Simbra SA - <a href="http://www.simbra.org">www.simbra.org</a> / <a href="mailto:info@simbra.org">info@simbra.org</a> / 051 446 0580/2			
<b>2019</b>	<b>BW</b>	<b>200</b>	<b>400</b>	<b>600</b>	<b>MCW</b>	<b>MILK</b>	<b>SC</b>	<b>DC</b>	<b>EMA</b>	<b>IMF%</b>	<b>RBY%</b>	<b>SFL</b>	<b>NG</b>	<b>SW</b>		
EBV	+0.0	+3	+7	+4	+2	-1	--	--	--	--	--	+63	+16	+27		
ACC	73%	67%	62%	69%	60%	40%										
BREED	+1.2	+17	+24	+32	+35	+4	+0.7	-1.1	+0.1	+0.0	+0.1	+162	+70	+116		
<b>Seller's remarks / Verkoper se kommentaar:</b> GOEIE HARDE BUL MET 'N SKROTUM OMTREK VAN 44CM. HIERDIE BUL KAN ENIGE PLEK WERK.													<b>R</b>			

<b>LILA MXE172C</b>										<b>MXE172C</b>					<b>Lot. 17</b>	
JGF ERASMUS, POSBUS 189 WARDEN 9890 TEL:27825501075													SIMBRA			
Birth Date: 2017/02/06			DNA: 474275 U, SV			Reg. Status: REG					MALE/MANLIK					
Age: 30 months						Inspection Date: 2019/03/27					Reg. No: 172372914					
Herdbook: F3																
Horn: Horned																
<b>SIRE / VAAR:</b>											<b>DAM / MOER:</b>					
July 2019 South African Simbra GROUP BREEDPLAN EBVS													Simbra SA - <a href="http://www.simbra.org">www.simbra.org</a> / <a href="mailto:info@simbra.org">info@simbra.org</a> / 051 446 0580/2			
<b>2019</b>	<b>BW</b>	<b>200</b>	<b>400</b>	<b>600</b>	<b>MCW</b>	<b>MILK</b>	<b>SC</b>	<b>DC</b>	<b>EMA</b>	<b>IMF%</b>	<b>RBY%</b>	<b>SFL</b>	<b>NG</b>	<b>SW</b>		
EBV	-0.6	+11	+20	+31	+29	+5	--	--	--	--	--	+148	+79	+86		
ACC	73%	70%	68%	66%	58%	43%										
BREED	+1.2	+17	+24	+32	+35	+4	+0.7	-1.1	+0.1	+0.0	+0.1	+162	+70	+116		
<b>Seller's remarks / Verkoper se kommentaar:</b> JONGER BUL. HET BAIE POTENSIAAL. BAIE VLEIS. SKROTUM OMTREK VAN 44CM.													<b>R</b>			

<b>LILA MXE16144A</b>										<b>MXE16144A</b>					<b>Lot. 18</b>	
JGF ERASMUS, POSBUS 189 WARDEN 9890 TEL:27825501075															SIMBRA	
Birth Date: 2016/08/11			DNA: 474269 U, SV			Reg. Status: REG			MALE/MANLIK							
Age: 36 months						Inspection Date: 2019/03/27			Reg. No: 172306383							
Herdbook: F1																
Horn:																
SIRE / VAAR:							DAM / MOER:									
July 2019 South African Simbra GROUP BREEDPLAN EBVS										Simbra SA - <a href="http://www.simbra.org">www.simbra.org</a> / <a href="mailto:info@simbra.org">info@simbra.org</a> / 051 446 0580/2						
2019	BW	200	400	600	MCW	MILK	SC	DC	EMA	IMF%	RBY%	SFL	NG	SW		
EBV	+3.7	+35	+41	+55	+56	+6	--	--	--	--	--	+257	+120	+238		
ACC	71%	66%	60%	68%	53%	39%										
BREED	+1.2	+17	+24	+32	+35	+4	+0.7	-1.1	+0.1	+0.0	+0.1	+162	+70	+116		
 <b>Seller's remarks / Verkoper se kommentaar:</b> GOEIE BUL VIR SPEENKALWERS. SKROTUM OMTREK VAN 39CM.										R _____						

<b>LILA MXE16168B</b>										<b>MXE16168B</b>					<b>Lot. 19</b>	
JGF ERASMUS, POSBUS 189 WARDEN 9890 TEL:27825501075															SIMBRA	
Birth Date: 2016/10/11			DNA: 497138 U, SV			Reg. Status: REG			MALE/MANLIK							
Age: 34 months						Inspection Date: 2019/03/27			Reg. No: 172306631							
Herdbook: F2																
Horn:																
SIRE / VAAR:							DAM / MOER:									
July 2019 South African Simbra GROUP BREEDPLAN EBVS										Simbra SA - <a href="http://www.simbra.org">www.simbra.org</a> / <a href="mailto:info@simbra.org">info@simbra.org</a> / 051 446 0580/2						
2019	BW	200	400	600	MCW	MILK	SC	DC	EMA	IMF%	RBY%	SFL	NG	SW		
EBV	+2.7	+19	+22	+28	+22	+1	--	--	--	--	--	+117	+71	+117		
ACC	73%	69%	60%	61%	53%	42%										
BREED	+1.2	+17	+24	+32	+35	+4	+0.7	-1.1	+0.1	+0.0	+0.1	+162	+70	+116		
 <b>Seller's remarks / Verkoper se kommentaar:</b> SKROTUM OMTREK VAN 38CM.										R _____						

<b>LILA MXE1632B</b>										<b>MXE1632B</b>					<b>Lot. 20</b>	
JGF ERASMUS, POSBUS 189 WARDEN 9890 TEL:27825501075															SIMBRA	
Birth Date: 2016/03/06			DNA: 497132 U, SV			Reg. Status: REG			MALE/MANLIK							
Age: 41 months						Inspection Date: 2019/03/27			Reg. No: 172242794							
Herdbook: F2																
Horn:																
SIRE / VAAR:							DAM / MOER:									
July 2019 South African Simbra GROUP BREEDPLAN EBVS										Simbra SA - <a href="http://www.simbra.org">www.simbra.org</a> / <a href="mailto:info@simbra.org">info@simbra.org</a> / 051 446 0580/2						
2019	BW	200	400	600	MCW	MILK	SC	DC	EMA	IMF%	RBY%	SFL	NG	SW		
EBV	-0.2	+12	+14	+14	+2	+1	--	--	--	--	--	+127	+58	+116		
ACC	73%	69%	59%	61%	53%	42%										
BREED	+1.2	+17	+24	+32	+35	+4	+0.7	-1.1	+0.1	+0.0	+0.1	+162	+70	+116		
 <b>Seller's remarks / Verkoper se kommentaar:</b> BUL MET 'N 41CM SKROTUM OMTREK.										R _____						

<b>LILA MXE16158C</b>							<b>MXE16158C</b>					<b>Lot. 21</b>			
JGF ERASMUS, POSBUS 189 WARDEN 9890 TEL:27825501075												SIMBRA			
Birth Date: 2016/08/24			DNA: 474270 U, SV			Reg. Status: REG					MALE/MANLIK				
Age: 35 months						Inspection Date: 2019/03/27					Reg. No: 172306524				
Herdbook: F3															
Horn:															
<b>SIRE / VAAR:</b> 			<b>DAM / MOER:</b> 												
July 2019 South African Simbra GROUP BREEDPLAN EBVS												Simbra SA - <a href="http://www.simbra.org">www.simbra.org</a> / <a href="mailto:info@simbra.org">info@simbra.org</a> / 051 446 0580/2			
<b>2019</b>	<b>BW</b>	<b>200</b>	<b>400</b>	<b>600</b>	<b>MCW</b>	<b>MILK</b>	<b>SC</b>	<b>DC</b>	<b>EMA</b>	<b>IMF%</b>	<b>RBY%</b>	<b>SFL</b>	<b>NG</b>	<b>SW</b>	
EBV	-1.1	+8	+17	+26	+30	+6	--	--	--	--	--	+164	+63	+84	
ACC	75%	71%	66%	72%	63%	46%									
BREED	+1.2	+17	+24	+32	+35	+4	+0.7	-1.1	+0.1	+0.0	+0.1	+162	+70	+116	
<b>S</b> <u>Seller's remarks / Verkoper se kommentaar:</u>												R _____			
BUL OM VERSE OOP TE MAAK. HET 'N SKROTUM OMTREK VAN 41CM.															

<b>LILA MXE16161B</b>							<b>MXE16161B</b>					<b>Lot. 22</b>			
JGF ERASMUS, POSBUS 189 WARDEN 9890 TEL:27825501075												SIMBRA			
Birth Date: 2016/09/06			DNA: 474271 U, SV			Reg. Status: REG					MALE/MANLIK				
Age: 35 months						Inspection Date: 2019/03/27					Reg. No: 172306565				
Herdbook: F2															
Horn:															
<b>SIRE / VAAR:</b> 			<b>DAM / MOER:</b> 												
July 2019 South African Simbra GROUP BREEDPLAN EBVS												Simbra SA - <a href="http://www.simbra.org">www.simbra.org</a> / <a href="mailto:info@simbra.org">info@simbra.org</a> / 051 446 0580/2			
<b>2019</b>	<b>BW</b>	<b>200</b>	<b>400</b>	<b>600</b>	<b>MCW</b>	<b>MILK</b>	<b>SC</b>	<b>DC</b>	<b>EMA</b>	<b>IMF%</b>	<b>RBY%</b>	<b>SFL</b>	<b>NG</b>	<b>SW</b>	
EBV	+2.4	+21	+25	+34	+29	+5	--	--	--	--	--	+138	+77	+137	
ACC	73%	69%	64%	70%	58%	45%									
BREED	+1.2	+17	+24	+32	+35	+4	+0.7	-1.1	+0.1	+0.0	+0.1	+162	+70	+116	
<b>S</b> <u>Seller's remarks / Verkoper se kommentaar:</u>												R _____			
VLEIS BUL MET 'N GOEIE SKROTUM OMTEK VAN 43CM.															