

PRODUCTION SALE

2022 W E D N E S D A Y 19 JANUARY

COLLINGHAM
MOLTENO



WHITE WOOLS
DOHNE STUD

COLLINGHAM - MOLTENO

PLATINUM
WHITE WOOLS

GOLD
WHITE WOOLS

SILVER
WHITE WOOLS

BRONZE
WHITE WOOLS

PRESS HERE TO REGISTER
FOR AUCTION NOW

PRESS HERE TO VIEW AUCTION
TERMS & CONDITIONS

WWW.WHITEWOOLSDOHNE.CO.ZA



WHITEWOOLSDOHNEMERINO



WHITEWOOLSDOHNES

Dries Pienaar: +27 83 353 6408 | 087 550 2980

Dirk Odendaal: +27 82 920 3761

Jan van der Walt: +27 82 376 6178



PAGE
4-31

STUD SIRES
LOT 1-14

PAGE
32-83

COMMERCIAL RAMS
LOT 15-65



1950

Jan Pienaar

Jan Pienaar was born in Colesberg, Northern Cape. He was the youngest of 3 brothers, he received his education at the prestigious Paarl Boys High and matriculated in 1947. He also played senior rugby for the Griqualand West as a young man. Jan started farming with Merinos in Colesberg after school. He was Vice Chairman of Merino SA for a number of years and he was renowned for being a true statesman for the Merino in those years. Jan always made time for the young farmers that flocked to him, and he gleefully and freely shared his wisdom.



1980

Andries Pienaar

Andries Pienaar was born in Hanover in 1957. He received his education at Paarl Boys High and matriculated in 1975 as Paarl Boys High's first SA Schools player. He studied at the University of Stellenbosch, where he would be a regular feature in the Maties first rugby team. In 1980, he exchanged his first love – rugby – for his forever love - Merino breeding. Together with his cousin, they made history by being the first South Africans to live import a ram from Australia. Andries's deep-rooted passion for breeding high quality rams has never faltered and is still today a significant figure in the industry. He started White Wools Dohne Stud as he felt that the 'hardiness' of the Merino was better suited for the sour veld of Molteno.



2013

Dries Pienaar

Just like those before him, Dries received his education from Paarl Boys High whereafter he studied at the University of Stellenbosch. Dries continued to pursue his career in Johannesburg, but he always knew that the farm was where he needed to be. So, 7 years ago, Dries joined his father, Andries Pienaar on the White Wools farm in Molteno. Technology that has been developed & continues to be developed for stud farming are a large part of what gets Dries excited about the future of White Wools. He continues to uphold the legacy of a White Wools farmer that produces high-quality studs, that go further and offer you more value.

INDICATORS

PLATINUM
WHITE WOOLS

GOLD
WHITE WOOLS

SILVER
WHITE WOOLS

BRONZE
WHITE WOOLS

INTRODUCING OUR WHITE WOOLS INDICATORS

We are proud to introduce our indicators first implemented in Jan 201 at White Wools.

In the last few years, we have identified animals that are in the top 10% of body mass & muscle weight, and this balance in a ram is what we strive for year after year.

To quantify our animals with a distinctive evaluation system that combines our own high standards for ourselves with that of an inspector.

We critic the animal in two important aspects:

- Body conformation
- Wool appearance & style

In this catalogue you will see the following White Wools Indicators:

STUD SIRE
WW192680

LOT
1

LOT 1

WW192680



PRESS
PLAY



TO VIEW
RAM NOW

LOT
1

WOOL



BREEDING VALUES

Lot Nr / Lot No	1	
Ram Nr / Ram No	WW192680	
Simbool / Symbol	AA	
Geboorte Status / Birth Status	1	
Eienskap / Trait	VTW/EBV	SIM/SYM
Speen Maternaal / Wean Maternal	-0.2882	-
Speen Direk / Wean Direct	1.1344	+
Liggaamsmassa / Body Weight 12 Mts	2.0522	+
Scoonvagnmassa / Clean Fleece Weight	0.2555	+
Veseldikte / Fibre Diameter	0.4718	-
Algemene Meriete / General Merit	3.8900	=
Moeder / Dam	WW170196	
Parings - Lammers / Matings - Lambs	3	3
Vaar / Sire	WW170381	



PEDIGREE

**STUD SIRE
WW192680**

**LOT
1**

WW192680

WW170381

WW170196



STUD SIRE
WW192129

LOT
2

LOT 2

WW192129



PRESS
PLAY



TO VIEW
RAM NOW

LOT
2

WOOL



BREEDING VALUES

Lot Nr / Lot No	2	
Ram Nr / Ram No	WW192129	
Simbool / Symbol	AA	
Geboorte Status / Birth Status	1	
Eienskap / Trait	VTW/EBV	Sim/Sym
Speen Maternaal / Wean Maternal	0.1304	=
Speen Direk / Wean Direct	2.1507	+
Liggaamsmassa / Body Weight 12 Mts	3.3010	*
Scoonvagmassa / Clean Fleece Weight	0.0714	=
Veseldikte / Fibre Diameter	-0.4339	+
Algemene Meriete / General Merit	8.9400	+
Moeder / Dam	WW162476	
Parings - Lammers / Matings - Lambs	8	15
Vaar / Sire	WW152063	



PEDIGREE

**STUD SIRE
WW192129**

**LOT
2**

WW192129

WW152063

WW162476



STUD SIRE
WW192689

LOT
3

LOT 3

WW192689



PRESS
PLAY



TO VIEW
RAM NOW

LOT
3

WOOL



BREEDING VALUES

Lot Nr / Lot No	3	
Ram Nr / Ram No	WW192689	
Simbool / Symbol	AA	
Geboorte Status / Birth Status	1	
Eienskap / Trait	VTW I EBV	Sim/Sym
Speen Maternaal / Wean Maternal	-0.3013	-
Speen Direk / Wean Direct	1.9914	+
Liggaamsmassa / Body Weight 12 Mts	1.9746	+
Skoonvagmassa / Clean Fleece Weight	0.1559	+
Veseldikte / Fibre Diameter	-0.0751	=
Algemene Meriete / General Merit	6.6200	+
Moeder / Dam	WW162208	
Parings - Lammers / Matings - Lambs	4	6
Vaar / Sire	WW170381	



PEDIGREE

**STUD SIRE
WW192689**

**LOT
3**

WW192689

WW170381

WW162208



STUD SIRE
WW192044

LOT
4

LOT 4

WW192044



PRESS
PLAY



TO VIEW
RAM NOW

LOT
4

WOOL



BREEDING VALUES

Lot Nr / Lot No	4	
Ram Nr / Ram No	WW192044	
Simbool / Symbol	AA	
Geboorte Status / Birth Status	3	
Eienskap / Trait	VTW I EBV	SimlSym
Speen Maternaal / Wean Maternal	-0.5187	x
Speen Direk / Wean Direct	1.7769	+
Liggaamsmassa / Body Weight 12 Mts	2.6006	+
Scoonvagmassa / Clean Fleece Weight	0.1257	=
Veseldikte / Fibre Diameter	-0.1806	=
Algemene Meriete / General Merit	5.3100	=
Moeder / Dam	WW170086	
Parings - Lammers / Matings - Lambs	2	15
Vaar / Sire	WW170012	



PEDIGREE

**STUD SIRE
WW192044**

**LOT
4**

WW192044

WW170012

WW170086



STUD SIRE
WW192633

LOT
5

LOT 5

WW192633



PRESS
PLAY



TO VIEW
RAM NOW

LOT
5

WOOL



BREEDING VALUES

Lot Nr / Lot No	5	
Ram Nr / Ram No	WW192633	
Simbool / Symbol	AA	
Geboorte Status / Birth Status	1	
Eienskap / Trait	VTW/EBV	Sim/Sym
Speen Maternaal / Wean Maternal	0.2834	+
Speen Direk / Wean Direct	1.7478	+
Liggaamsmassa / Body Weight 12 Mts	1.1049	=
Scoonvagmassa / Clean Fleece Weight	0.0655	=
Veseldikte / Fibre Diameter	-0.2039	+
Algemene Meriete / General Merit	7.2400	+
Moeder / Dam	WW152462	
Parings - Lammers / Matings - Lambs	3	3
Vaar / Sire	WW170083	



PEDIGREE

**STUD SIRE
WW192633**

**LOT
5**

WW192633

WW170083

WW152462



STUD SIRE
WW192699

LOT
6

LOT 6

WW192699



PRESS
PLAY



TO VIEW
RAM NOW

LOT
6

WOOL



BREEDING VALUES

Lot Nr / Lot No	6	
Ram Nr / Ram No	WW192699	
Simbool / Symbol	AA	
Geboorte Status / Birth Status	1	
Eienskap / Trait	VTW/EBV	Sim/Sym
Speen Maternaal / Wean Maternal	0.1765	+
Speen Direk / Wean Direct	1.7315	+
Liggaansmassa / Body Weight 12 Mts	1.9777	+
Skoonvagmassa / Clean Fleece Weight	0.0782	=
Veseldikte / Fibre Diameter	-0.6618	+
Algemene Meriete / General Merit	9.8100	+
Moeder / Dam	WW162487	
Parings - Lammers / Matings - Lambs	4	4
Vaar / Sire	WW170269	



PEDIGREE

**STUD SIRE
WW192699**

**LOT
6**

WW192699

WW1170269

WW162497



STUD SIRE
WW192210

LOT
7

LOT 7

WW192210



PRESS
PLAY



TO VIEW
RAM NOW

LOT
7

WOOL



BREEDING VALUES

Lot Nr / Lot No	7	
Ram Nr / Ram No	WW192210	
Simbool / Symbol	AA	
Geboorte Status / Birth Status	1	
Eienskap / Trait	VTW/EBV	Sim/Sym
Speen Maternaal / Wean Maternal	-0.5762	-
Speen Direk / Wean Direct	2.0814	+
Liggaamsmassa / Body Weight 12 Mts	2.4149	+
Skoonvagmassa / Clean Fleece Weight	0.4778	*
Veseldikte / Fibre Diameter	0.2136	=
Algemene Meriete / General Merit	11.0600	+
Moeder / Dam	WW170162	
Parings - Lammers / Matings - Lambs	2	2
Vaar / Sire	SD150015	



PEDIGREE

**STUD SIRE
WW192210**

**LOT
7**

WW192210

SD150015

WW170162



STUD SIRE
WW192208

LOT
8

LOT 8

WW192208



PRESS
PLAY



TO VIEW
RAM NOW

LOT
8

WOOL



BREEDING VALUES

Lot Nr / Lot No	8	
Ram Nr / Ram No	WW192208	
Simbool / Symbol	AA	
Geboorte Status / Birth Status	1	
Eienskap / Trait	VTW/EBV	Sim/Sym
Speen Maternaal / Wean Maternal	0.3366	-
Speen Direk / Wean Direct	2.6069	+
Liggaamsmassa / Body Weight 12 Mts	3.7409	+
Skoonvagmassa / Clean Fleece Weight	0.0549	*
Veseldikte / Fibre Diameter	0.2694	=
Algemene Meriete / General Merit	6.0700	+
Moeder / Dam	WW142122	
Parings - Lammers / Matings - Lambs	5	7
Vaar / Sire	WW170161	



PEDIGREE

**STUD SIRE
WW192208**

**LOT
8**

WW192208

WW170161

WW142122



STUD SIRE
WW192713

LOT
9

LOT 9

WW192713



PRESS
PLAY



TO VIEW
RAM NOW

LOT
9

WOOL



BREEDING VALUES

Lot Nr / Lot No	9	
Ram Nr / Ram No	WW192713	
Simbool / Symbol	AA	
Geboorte Status / Birth Status	1	
Eienskap / Trait	VTW/EBV	Sim/Sym
Speen Maternaal / Wean Maternal	0.0632	=
Speen Direk / Wean Direct	2.1767	+
Liggaamsmassa / Body Weight 12 Mts	2.0742	+
Skoonvagnmassa / Clean Fleece Weight	0.0097	-
Veseldikte / Fibre Diameter	0.0747	=
Algemene Meriete / General Merit	4.3100	=
Moeder / Dam	WW112488	
Parings - Lammers / Matings - Lambs	7	10
Vaar / Sire	WW170124	



PEDIGREE

**STUD SIRE
WW192713**

**LOT
9**

WW192713

WW170124

WW112488



STUD SIRE
WW192717

LOT
10

LOT 10

WW192717



PRESS
PLAY



TO VIEW
RAM NOW

LOT
10

WOOL



BREEDING VALUES

Lot Nr / Lot No	10	
Ram Nr / Ram No	WW192717	
Simbool / Symbol	AA	
Geboorte Status / Birth Status	1	
Eienskap / Trait	VTW/EBV	Sim/Sym
Speen Maternaal / Wean Maternal	0.2971	+
Speen Direk / Wean Direct	0.4974	=
Liggaamsmassa / Body Weight 12 Mts	1.9304	+
Skoonvagmassa / Clean Fleece Weight	-0.2745	X
Veseldikte / Fibre Diameter	-0.6093	+
Algemene Meriete / General Merit	-0.2300	-
Moeder / Dam	WW152033	
Parings - Lammers / Matings - Lambs	5	5
Vaar / Sire	WW170245	



PEDIGREE

**STUD SIRE
WW192717**

**LOT
10**

WW192717

WW170245

WW152003



STUD SIRE
WW192441

LOT
11

LOT 11

WW192441



PRESS
PLAY



TO VIEW
RAM NOW

LOT
11

WOOL



BREEDING VALUES

Lot Nr / Lot No	11	
Ram Nr / Ram No	WW192441	
Simbool / Symbol	AA	
Geboorte Status / Birth Status	2	
Eienskap / Trait	VTW/EBV	Sim/Sym
Speen Maternaal / Wean Maternal	1.2566	*
Speen Direk / Wean Direct	2.1394	+
Liggaamsmassa / Body Weight 12 Mts	2.3600	+
Skoonvagmassa / Clean Fleece Weight	-0.1134	-
Veseldikte / Fibre Diameter	-0.6638	+
Algemene Meriete / General Merit	10.6800	+
Moeder / Dam	WW162301	
Parings - Lammers / Matings - Lambs	4	14
Vaar / Sire	WW170004	



PEDIGREE

**STUD SIRE
WW192441**

**LOT
11**



WW192441

WW170004

WW162301



STUD SIRE
WW192098

LOT
12

LOT 12

WW192098



PRESS
PLAY



TO VIEW
RAM NOW

LOT
12

WOOL



BREEDING VALUES

Lot Nr / Lot No	12	
Ram Nr / Ram No	WW192098	
Simbool / Symbol	AA	
Geboorte Status / Birth Status	2	
Eienskap / Trait	VTW/EBV	Sim/Sym
Speen Maternaal / Wean Maternal	-0.2459	-
Speen Direk / Wean Direct	2.7871	*
Liggaamsmassa / Body Weight 12 Mts	3.2270	+
Skoonvagmassa / Clean Fleece Weight	0.2520	+
Veseldikte / Fibre Diameter	0.4996	-
Algemene Meriete / General Merit	7.0800	+
Moeder / Dam	WW132601	
Parings - Lammers / Matings - Lambs	5	8
Vaar / Sire	WW170161	



PEDIGREE

**STUD SIRE
WW192098**

**LOT
12**

WW192098

WW170161

WW1132601



STUD SIRE
WW192183

LOT
13

LOT 13

WW192183



PRESS
PLAY



TO VIEW
RAM NOW

LOT
13

WOOL



BREEDING VALUES

Lot Nr / Lot No	13	
Ram Nr / Ram No	WW192183	
Simbool / Symbol	AA	
Geboorte Status / Birth Status	2	
Eienskap / Trait	VTW/EBV	Sim/Sym
Speen Maternaal / Wean Maternal	0.0664	=
Speen Direk / Wean Direct	2.2731	*
Liggaamsmassa / Body Weight 12 Mts	3.4113	*
Skoonvagmassa / Clean Fleece Weight	0.2813	+
Veseldikte / Fibre Diameter	0.3741	-
Algemene Meriete / General Merit	8.6900	+
Moeder / Dam	WW112442	
Parings - Lammers / Matings - Lambs	8	10
Vaar / Sire	WW150015	



PEDIGREE

**STUD SIRE
WW192183**

**LOT
13**

WW192183

SD150015

WW112442



STUD SIRE
WW192466

LOT
14

LOT 14

WW192466



PRESS
PLAY



TO VIEW
RAM NOW

LOT
14

WOOL



BREEDING VALUES

Lot Nr / Lot No	14	
Ram Nr / Ram No	WW192466	
Simbool / Symbol	AA	
Geboorte Status / Birth Status	2	
Eienskap / Trait	VTW/EBV	Sim/Sym
Speen Maternaal / Wean Maternal	0.8191	*
Speen Direk / Wean Direct	2.0611	+
Liggaamsmassa / Body Weight 12 Mts	1.9258	+
Skoonvagmassa / Clean Fleece Weight	-0.1120	-
Veseldikte / Fibre Diameter	-0.6161	+
Algemene Meriete / General Merit	8.5400	+
Moeder / Dam	WW122486	
Parings - Lammers / Matings - Lambs	6	7
Vaar / Sire	WW170124	



PEDIGREE

**STUD SIRE
WW192466**

**LOT
14**

WW192466

WW170124

WW122486

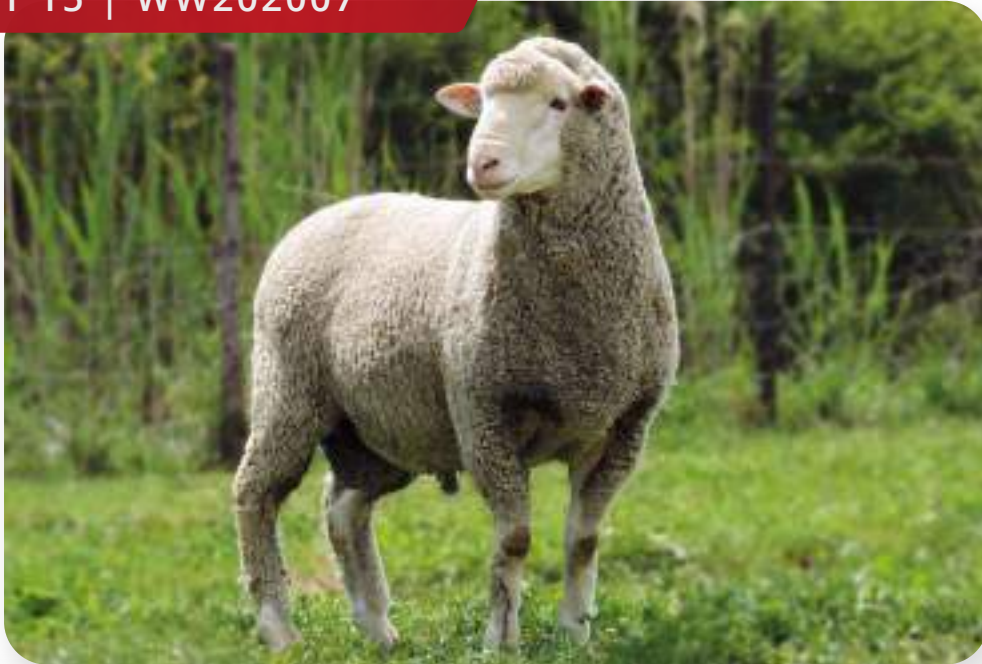


COMMERCIAL RAMS



COLLINGHAM - MOLTENO

LOT 15 | WW202007



WOOL



BREEDING VALUES

Lot Nr / Lot No	15	
Ram Nr / Ram No	WW202007	
Simbool / Symbol	AA	
Geboorte Status / Birth Status	1	
Eienskap / Trait	VTW/EBV	Sim/Sym
Speen Maternaal / Wean Maternal	-0.0364	=
Speen Direk / Wean Direct	2.7614	*
Liggaamsmassa / Body Weight 12 Mts	4.6529	*
Skoonvagnmassa / Clean Fleece Weight	0.4019	*
Veseldikte / Fibre Diameter	0.3523	-
Algemene Meriete / General Merit	12.0400	+
Moeder / Dam	WW162476	
Parings - Lammers / Matings - Lambs	8	15
Vaar / Sire	WW180098	

LOT 16 | WW202023



WOOL



BREEDING VALUES

Lot Nr / Lot No	16	
Ram Nr / Ram No	WW202023	
Simbool / Symbol	AA	
Geboorte Status / Birth Status	1	
Eienskap / Trait	VTW/EBV	Sim/Sym
Speen Maternaal / Wean Maternal	0.7574	+
Speen Direk / Wean Direct	4.4873	*
Liggaansmassa / Body Weight 12 Mts	6.9730	*
Skoonvagmassa / Clean Fleece Weight	0.3549	*
Veseldikte / Fibre Diameter	0.2867	=
Algemene Meriete / General Merit	17.9400	*
Moeder / Dam	WW180117	
Parings - Lammers / Matings - Lambs	2	7
Vaar / Sire	WW180179	

LOT 17 | WW202025



WOOL



BREEDING VALUES

Lot Nr / Lot No	17	
Ram Nr / Ram No	WW202025	
Simbool / Symbol	AA	
Geboorte Status / Birth Status	1	
Eienskap / Trait	VTW/EBV	Sim/Sym
Speen Maternaal / Wean Maternal	0.3502	+
Speen Direk / Wean Direct	2.9851	*
Liggaamsmassa / Body Weight 12 Mts	3.7804	*
Skoonvagmassa / Clean Fleece Weight	0.3938	*
Veseldikte / Fibre Diameter	0.5801	-
Algemene Meriete / General Merit	12.4600	+
Moeder / Dam	WW142377	
Parings - Lammers / Matings - Lambs	3	5
Vaar / Sire	WW180179	

LOT 18 | WW202035



WOOL



BREEDING VALUES

Lot Nr / Lot No	18	
Ram Nr / Ram No	WW202035	
Simbool / Symbol	AA	
Geboorte Status / Birth Status	1	
Eienskap / Trait	VTW/EBV	Sim/Sym
Speen Maternaal / Wean Maternal	1.0318	*
Speen Direk / Wean Direct	4.4408	*
Liggaamsmassa / Body Weight 12 Mts	5.5125	*
Skoonvagmassa / Clean Fleece Weight	0.2966	+
Veseldikte / Fibre Diameter	0.2072	=
Algemene Meriete / General Merit	18.1300	*
Moeder / Dam	WW162301	
Parings - Lammers / Matings - Lambs	4	14
Vaar / Sire	WW180179	

LOT 19 | WW202039



WOOL



BREEDING VALUES

Lot Nr / Lot No	19	
Ram Nr / Ram No	WW202039	
Simbool / Symbol	A	
Geboorte Status / Birth Status	1	
Eienskap / Trait	VTW/EBV	Sim/Sym
Speen Maternaal / Wean Maternal	0.3033	+
Speen Direk / Wean Direct	2.8895	*
Liggaamsmassa / Body Weight 12 Mts	3.2433	+
Skoonvagma / Clean Fleece Weight	0.4050	*
Veseldikte / Fibre Diameter	0.4994	-
Algemene Meriete / General Merit	12.8200	+
Moeder / Dam	WW142377	
Parings - Lammers / Matings - Lambs	3	5
Vaar / Sire	WW180179	

LOT 20 | WW202047



WOOL



BREEDING VALUES

Lot Nr / Lot No	20	
Ram Nr / Ram No	WW202047	
Simbool / Symbol	AA	
Geboorte Status / Birth Status	1	
Eienskap / Trait	VTW/EBV	Sim/Sym
Speen Maternaal / Wean Maternal	0.2462	+
Speen Direk / Wean Direct	0.9088	=
Liggaamsmassa / Body Weight 12 Mts	0.5226	=
Skoonvagmassa / Clean Fleece Weight	0.4565	*
Veseldikte / Fibre Diameter	0.8064	-
Algemene Meriete / General Merit	7.9700	+
Moeder / Dam	WW152123	
Parings - Lammers / Matings - Lambs	9	27
Vaar / Sire	WW180179	

LOT 21 | WW202057



WOOL



BREEDING VALUES

Lot Nr / Lot No	21	
Ram Nr / Ram No	WW202057	
Simbool / Symbol	A	
Geboorte Status / Birth Status	1	
Eienskap / Trait	VTW/EBV	Sim/Sym
Speen Maternaal / Wean Maternal	0.7210	+
Speen Direk / Wean Direct	1.3099	+
Liggaamsmassa / Body Weight 12 Mts	3.0538	+
Skoonvagnmassa / Clean Fleece Weight	0.0747	=
Veseldikte / Fibre Diameter	0.8414	-
Algemene Meriete / General Merit	2.0300	=
Moeder / Dam	WW162339	
Parings - Lammers / Matings - Lambs	4	6
Vaar / Sire	WW180310	

LOT 22 | WW202102



WOOL



BREEDING VALUES

Lot Nr / Lot No	22	
Ram Nr / Ram No	WW202102	
Simbool / Symbol	A	
Geboorte Status / Birth Status	2	
Eienskap / Trait	VTW/EBV	Sim/Sym
Speen Maternaal / Wean Maternal	-0.2710	-
Speen Direk / Wean Direct	2.4958	*
Liggaamsmassa / Body Weight 12 Mts	4.5722	*
Skoonvagmassa / Clean Fleece Weight	0.2509	+
Veseldikte / Fibre Diameter	0.7240	-
Algemene Meriete / General Merit	5.0300	=
Moeder / Dam	WW170171	
Parings - Lammers / Matings - Lambs	3	4
Vaar / Sire	SD150015	

LOT 23 | WW202126



WOOL



BREEDING VALUES

Lot Nr / Lot No	23	
Ram Nr / Ram No	WW202126	
Simbool / Symbol	A	
Geboorte Status / Birth Status	1	
Eienskap / Trait	VTW/EBV	Sim/Sym
Speen Maternaal / Wean Maternal	-0.1543	-
Speen Direk / Wean Direct	2.0092	+
Liggaamsmassa / Body Weight 12 Mts	3.9198	*
Scoonvagmassa / Clean Fleece Weight	0.4931	*
Veseldikte / Fibre Diameter	1.3914	X
Algemene Meriete / General Merit	5.8600	+
Moeder / Dam	WW132078	
Parings - Lammers / Matings - Lambs	5	5
Vaar / Sire	WW180098	

LOT 24 | WW202139



WOOL



BREEDING VALUES

Lot Nr / Lot No	24	
Ram Nr / Ram No	WW202139	
Simbool / Symbol	AA	
Geboorte Status / Birth Status	1	
Eienskap / Trait	VTW/EBV	Sim/Sym
Speen Maternaal / Wean Maternal	0.0685	=
Speen Direk / Wean Direct	3.1304	*
Liggaansmassa / Body Weight 12 Mts	4.1008	*
Skoonvagnmassa / Clean Fleece Weight	0.2733	+
Veseldikte / Fibre Diameter	0.6397	-
Algemene Meriete / General Merit	8.6300	+
Moeder / Dam	WW170032	
Parings - Lammers / Matings - Lambs	3	4
Vaar / Sire	WW18098	

LOT 25 | WW202148



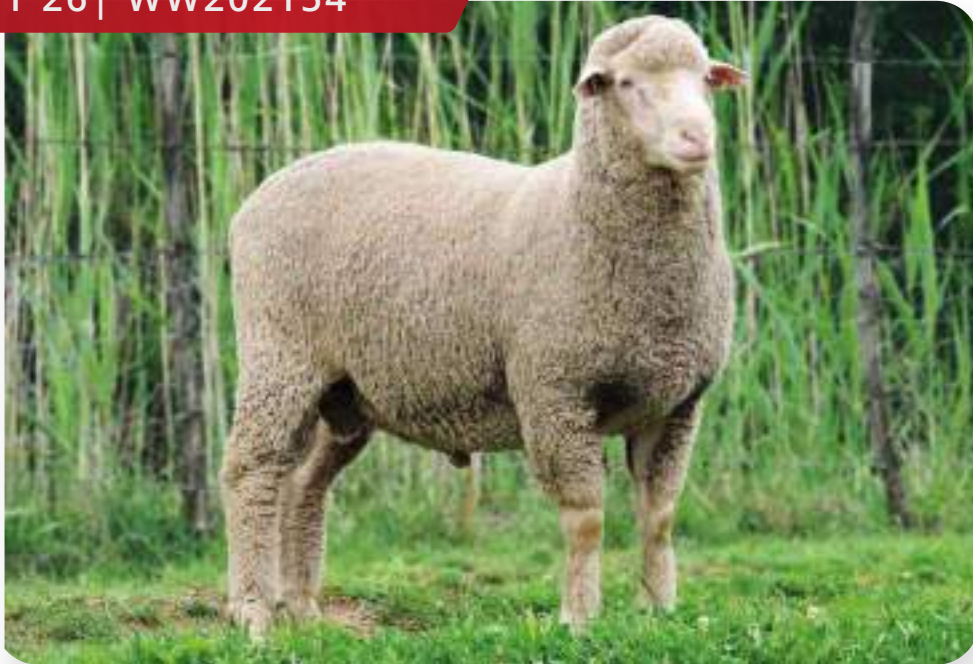
WOOL



BREEDING VALUES

Lot Nr / Lot No	25	
Ram Nr / Ram No	WW202148	
Simbool / Symbol	A	
Geboorte Status / Birth Status	1	
Eienskap / Trait	VTW/EBV	Sim/Sym
Speen Maternaal / Wean Maternal	0.3012	+
Speen Direk / Wean Direct	4.3806	*
Liggaamsmassa / Body Weight 12 Mts	7.0298	*
Scoonvagmassa / Clean Fleece Weight	0.3487	*
Veseldikte / Fibre Diameter	1.3799	X
Algemene Meriete / General Merit	9.2300	+
Moeder / Dam	WW170281	
Parings - Lammers / Matings - Lambs	2	2
Vaar / Sire	WW18098	

LOT 26 | WW202154



WOOL



BREEDING VALUES

Lot Nr / Lot No	26	
Ram Nr / Ram No	WW202154	
Simbool / Symbol	AA	
Geboorte Status / Birth Status	1	
Eienskap / Trait	VTW/EBV	Sim/Sym
Speen Maternaal / Wean Maternal	0.6645	+
Speen Direk / Wean Direct	2.1303	+
Liggaamsmassa / Body Weight 12 Mts	3.2749	+
Skoonvagmassa / Clean Fleece Weight	0.0197	-
Veseldikte / Fibre Diameter	-0.0569	=
Algemene Meriete / General Merit	7.6100	+
Moeder / Dam	WW162174	
Parings - Lammers / Matings - Lambs	4	5
Vaar / Sire	WW180310	

LOT 27 | WW202160



WOOL



BREEDING VALUES

Lot Nr / Lot No	27	
Ram Nr / Ram No	WW202160	
Simbool / Symbol	AA	
Geboorte Status / Birth Status	2	
Eienskap / Trait	VTW/EBV	Sim/Sym
Speen Maternaal / Wean Maternal	0.4888	+
Speen Direk / Wean Direct	3.0148	*
Liggaansmassa / Body Weight 12 Mts	5.4428	*
Skoonvagnmassa / Clean Fleece Weight	0.2934	+
Veseldikte / Fibre Diameter	0.8093	-
Algemene Meriete / General Merit	9.4800	+
Moeder / Dam	WW170145	
Parings - Lammers / Matings - Lambs	3	5
Vaar / Sire	WW180098	

LOT 28 | WW202161



WOOL



BREEDING VALUES

Lot Nr / Lot No	28	
Ram Nr / Ram No	WW202161	
Simbool / Symbol	A	
Geboorte Status / Birth Status	1	
Eienskap / Trait	VTW/EBV	Sim/Sym
Speen Maternaal / Wean Maternal	-0.2139	-
Speen Direk / Wean Direct	2.1733	+
Liggaamsmassa / Body Weight 12 Mts	4.4454	*
Skoonvagmassa / Clean Fleece Weight	0.5019	*
Veseldikte / Fibre Diameter	1.0945	-
Algemene Meriete / General Merit	7.9200	+
Moeder / Dam	WW152492	
Parings - Lammers / Matings - Lambs	3	3
Vaar / Sire	WW180098	

LOT 29 | 202170



WOOL



BREEDING VALUES

Lot Nr / Lot No	29	
Ram Nr / Ram No	WW202170	
Simbool / Symbol	A	
Geboorte Status / Birth Status	1	
Eienskap / Trait	VTW/EBV	Sim/Sym
Speen Maternaal / Wean Maternal	-0.2550	-
Speen Direk / Wean Direct	3.2985	*
Liggaamsmassa / Body Weight 12 Mts	4.4102	*
Scoonvagnmassa / Clean Fleece Weight	0.4201	*
Veseldikte / Fibre Diameter	0.6220	-
Algemene Meriete / General Merit	11.0200	+
Moeder / Dam	WW132142	
Parings - Lammers / Matings - Lambs	6	9
Vaar / Sire	WW180098	

LOT 30 | WW202166



WOOL



BREEDING VALUES

Lot Nr / Lot No	30	
Ram Nr / Ram No	WW202166	
Simbool / Symbol	AA	
Geboorte Status / Birth Status	1	
Eienskap / Trait	VTW/EBV	Sim/Sym
Speen Maternaal / Wean Maternal	0.0611	=
Speen Direk / Wean Direct	2.8006	*
Liggaamsmassa / Body Weight 12 Mts	5.0508	*
Skoonvagmassa / Clean Fleece Weight	0.3099	+
Veseldikte / Fibre Diameter	0.1310	=
Algemene Meriete / General Merit	11.8100	+
Moeder / Dam	WW170427	
Parings - Lammers / Matings - Lambs	3	4
Vaar / Sire	WW180098	

LOT 31 | WW202188



WOOL



BREEDING VALUES

Lot Nr / Lot No	31	
Ram Nr / Ram No	WW202188	
Simbool / Symbol	AA	
Geboorte Status / Birth Status	1	
Eienskap / Trait	VTW/EBV	Sim/Sym
Speen Maternaal / Wean Maternal	-0.2485	-
Speen Direk / Wean Direct	2.7208	*
Liggaamsmassa / Body Weight 12 Mts	4.1138	*
Scoonvagnmassa / Clean Fleece Weight	0.3685	*
Veseldikte / Fibre Diameter	0.3924	-
Algemene Meriete / General Merit	10.1400	+
Moeder / Dam	WW180009	
Parings - Lammers / Matings - Lambs	2	2
Vaar / Sire	WW170381	

LOT 32 | WW202202



WOOL



BREEDING VALUES

Lot Nr / Lot No	32	
Ram Nr / Ram No	WW202202	
Simbool / Symbol	A	
Geboorte Status / Birth Status	2	
Eienskap / Trait	VTW/EBV	Sim/Sym
Speen Maternaal / Wean Maternal	-0.4633	-
Speen Direk / Wean Direct	1.7218	+
Liggaamsmassa / Body Weight 12 Mts	3.0505	+
Scoonvagnmassa / Clean Fleece Weight	0.3738	*
Veseldikte / Fibre Diameter	0.9769	-
Algemene Meriete / General Merit	3.9300	=
Moeder / Dam	WW14204	
Parings - Lammers / Matings - Lambs	6	7
Vaar / Sire	WW180098	

LOT 33 | WW202210



WOOL



BREEDING VALUES

Lot Nr / Lot No	33	
Ram Nr / Ram No	WW202210	
Simbool / Symbol	A	
Geboorte Status / Birth Status	2	
Eienskap / Trait	VTW/EBV	Sim/Sym
Speen Maternaal / Wean Maternal	-0.1196	=
Speen Direk / Wean Direct	2.6772	*
Liggaansmassa / Body Weight 12 Mts	3.9746	*
Skoonvagmassa / Clean Fleece Weight	0.5475	*
Veseldikte / Fibre Diameter	1.1967	X
Algemene Meriete / General Merit	9.6800	+
Moeder / Dam	WW112485	
Parings - Lammers / Matings - Lambs	6	8
Vaar / Sire	WW180098	

LOT 34 | WW202225



WOOL



BREEDING VALUES

Lot Nr / Lot No	34	
Ram Nr / Ram No	WW202225	
Simbool / Symbol	A	
Geboorte Status / Birth Status	2	
Eienskap / Trait	VTW/EBV	Sim/Sym
Speen Maternaal / Wean Maternal	-0.1173	=
Speen Direk / Wean Direct	3.1642	*
Liggaamsmassa / Body Weight 12 Mts	5.3229	*
Scoonvagnmassa / Clean Fleece Weight	0.3442	*
Veseldikte / Fibre Diameter	1.1775	X
Algemene Meriete / General Merit	6.2900	+
Moeder / Dam	WW122240	
Parings - Lammers / Matings - Lambs	4	5
Vaar / Sire	WW18098	

LOT 35 | WW202224



WOOL



BREEDING VALUES

Lot Nr / Lot No	35	
Ram Nr / Ram No	WW202224	
Simbool / Symbol	A	
Geboorte Status / Birth Status	2	
Eienskap / Trait	VTW/EBV	Sim/Sym
Speen Maternaal / Wean Maternal	-0.1546	-
Speen Direk / Wean Direct	2.5509	*
Liggaamsmassa / Body Weight 12 Mts	3.4646	*
Scoonvagmassa / Clean Fleece Weight	0.2814	+
Veseldikte / Fibre Diameter	0.5550	-
Algemene Meriete / General Merit	7.2900	+
Moeder / Dam	WW122240	
Parings - Lammers / Matings - Lambs	4	5
Vaar / Sire	WW180098	

LOT 36 | WW202257



WOOL



BREEDING VALUES

Lot Nr / Lot No	36	
Ram Nr / Ram No	WW202257	
Simbool / Symbol	AA	
Geboorte Status / Birth Status	3	
Eienskap / Trait	VTW/EBV	Sim/Sym
Speen Maternaal / Wean Maternal	0.1318	=
Speen Direk / Wean Direct	3.4825	*
Liggaamsmassa / Body Weight 12 Mts	6.1433	*
Skoonvagnmassa / Clean Fleece Weight	0.3834	*
Veseldikte / Fibre Diameter	1.0380	-
Algemene Meriete / General Merit	9.6000	+
Moeder / Dam	WW132298	
Parings - Lammers / Matings - Lambs	6	13
Vaar / Sire	WW180098	

LOT 37 | WW202260



WOOL



BREEDING VALUES

Lot Nr / Lot No	37	
Ram Nr / Ram No	WW202260	
Simbool / Symbol	A	
Geboorte Status / Birth Status	1	
Eienskap / Trait	VTW/EBV	Sim/Sym
Speen Maternaal / Wean Maternal	0.9767	*
Speen Direk / Wean Direct	1.2605	+
Liggaamsmassa / Body Weight 12 Mts	3.3889	*
Scoonvagmassa / Clean Fleece Weight	0.0777	=
Veseldikte / Fibre Diameter	0.8675	-
Algemene Meriete / General Merit	2.8500	=
Moeder / Dam	WW162260	
Parings - Lammers / Matings - Lambs	3	3
Vaar / Sire	WW180310	

LOT 38 | WW202252



WOOL



BREEDING VALUES

Lot Nr / Lot No	38	
Ram Nr / Ram No	WW202252	
Simbool / Symbol	AA	
Geboorte Status / Birth Status	2	
Eienskap / Trait	VTW/EBV	Sim/Sym
Speen Maternaal / Wean Maternal	0.5704	+
Speen Direk / Wean Direct	4.4141	*
Liggaamsmassa / Body Weight 12 Mts	7.6220	*
Skoonvagmassa / Clean Fleece Weight	0.2070	+
Veseldikte / Fibre Diameter	1.4105	X
Algemene Meriete / General Merit	7.0600	+
Moeder / Dam	WW170310	
Parings - Lammers / Matings - Lambs	3	5
Vaar / Sire	WW180098	

LOT 39 | WW202290



WOOL



BREEDING VALUES

Lot Nr / Lot No	39	
Ram Nr / Ram No	WW202290	
Simbool / Symbol	A	
Geboorte Status / Birth Status	2	
Eienskap / Trait	VTW/EBV	Sim/Sym
Speen Maternaal / Wean Maternal	-0.5411	-
Speen Direk / Wean Direct	3.3858	*
Liggaamsmassa / Body Weight 12 Mts	5.5994	*
Skoonvagnmassa / Clean Fleece Weight	0.4984	*
Veseldikte / Fibre Diameter	1.4786	X
Algemene Meriete / General Merit	6.6400	+
Moeder / Dam	WW170231	
Parings - Lammers / Matings - Lambs	3	5
Vaar / Sire	WW180098	



LOT 40 | WW202296



WOOL



BREEDING VALUES

Lot Nr / Lot No	40	
Ram Nr / Ram No	WW202296	
Simbool / Symbol	AA	
Geboorte Status / Birth Status	2	
Eienskap / Trait	VTW/EBV	Sim/Sym
Speen Maternaal / Wean Maternal	-1.1219	X
Speen Direk / Wean Direct	3.3846	*
Liggaamsmassa / Body Weight 12 Mts	5.9685	*
Skoonvagmassa / Clean Fleece Weight	0.6288	*
Veseldikte / Fibre Diameter	1.0231	-
Algemene Meriete / General Merit	9.9500	+
Moeder / Dam	WW170135	
Parings - Lammers / Matings - Lambs	3	5
Vaar / Sire	WW180098	

LOT 41 | WW202353



WOOL



BREEDING VALUES

Lot Nr / Lot No	41	
Ram Nr / Ram No	WW202353	
Simbool / Symbol	AA	
Geboorte Status / Birth Status	2	
Eienskap / Trait	VTW/EBV	Sim/Sym
Speen Maternaal / Wean Maternal	-0.1449	=
Speen Direk / Wean Direct	3.7809	*
Liggaamsmassa / Body Weight 12 Mts	5.7335	*
Skoonvagnmassa / Clean Fleece Weight	0.3783	*
Veseldikte / Fibre Diameter	1.3722	X
Algemene Meriete / General Merit	6.9800	+
Moeder / Dam	WW180046	
Parings - Lammers / Matings - Lambs	2	3
Vaar / Sire	WW180098	

LOT 42 | WW202354



WOOL



BREEDING VALUES

Lot Nr / Lot No	42	
Ram Nr / Ram No	WW202354	
Simbool / Symbol	AA	
Geboorte Status / Birth Status	2	
Eienskap / Trait	VTW/EBV	Sim/Sym
Speen Maternaal / Wean Maternal	-0.0431	=
Speen Direk / Wean Direct	4.3071	*
Liggaamsmassa / Body Weight 12 Mts	7.7590	*
Scoonvagnmassa / Clean Fleece Weight	0.3538	*
Veseldikte / Fibre Diameter	1.1389	X
Algemene Meriete / General Merit	9.2900	+
Moeder / Dam	WW180046	
Parings - Lammers / Matings - Lambs	2	3
Vaar / Sire	WW180098	

LOT 43 | WW202363



WOOL



BREEDING VALUES

Lot Nr / Lot No	43	
Ram Nr / Ram No	WW202363	
Simbool / Symbol	A	
Geboorte Status / Birth Status	1	
Eienskap / Trait	VTW/EBV	Sim/Sym
Speen Maternaal / Wean Maternal	0.3378	+
Speen Direk / Wean Direct	0.6520	=
Liggaamsmassa / Body Weight 12 Mts	-0.1510	-
Scoonvagmassa / Clean Fleece Weight	0.1891	+
Veseldikte / Fibre Diameter	0.2018	=
Algemene Meriete / General Merit	5.5700	=
Moeder / Dam	WW170195	
Parings - Lammers / Matings - Lambs	3	5
Vaar / Sire	WW180310	

LOT 44 | WW202375



WOOL



BREEDING VALUES

Lot Nr / Lot No	44	
Ram Nr / Ram No	WW202375	
Simbool / Symbol	AA	
Geboorte Status / Birth Status	2	
Eienskap / Trait	VTW/EBV	Sim/Sym
Speen Maternaal / Wean Maternal	0.4847	+
Speen Direk / Wean Direct	2.7992	*
Liggaamsmassa / Body Weight 12 Mts	5.2283	*
Skoonvagnmassa / Clean Fleece Weight	0.3943	*
Veseldikte / Fibre Diameter	1.0270	-
Algemene Meriete / General Merit	9.9600	+
Moeder / Dam	WW180299	
Parings - Lammers / Matings - Lambs	2	3
Vaar / Sire	WW180098	

LOT 45 | WW202410



WOOL



BREEDING VALUES

Lot Nr / Lot No	45	
Ram Nr / Ram No	WW202410	
Simbool / Symbol	AA	
Geboorte Status / Birth Status	1	
Eienskap / Trait	VTW/EBV	Sim/Sym
Speen Maternaal / Wean Maternal	0.2461	+
Speen Direk / Wean Direct	2.6626	*
Liggaamsmassa / Body Weight 12 Mts	3.4974	*
Scoonvagmassa / Clean Fleece Weight	0.4653	*
Veseldikte / Fibre Diameter	1.3216	X
Algemene Meriete / General Merit	8.5400	+
Moeder / Dam	WW162200	
Parings - Lammers / Matings - Lambs	3	4
Vaar / Sire	WW170381	

LOT 46 | WW202407



WOOL



BREEDING VALUES

Lot Nr / Lot No	46	
Ram Nr / Ram No	WW202407	
Simbool / Symbol	A	
Geboorte Status / Birth Status	1	
Eienskap / Trait	VTW/EBV	Sim/Sym
Speen Maternaal / Wean Maternal	0.5573	+
Speen Direk / Wean Direct	1.4164	+
Liggaamsmassa / Body Weight 12 Mts	2.2062	+
Skoonvagmassa / Clean Fleece Weight	0.0792	=
Veseldikte / Fibre Diameter	-0.1612	+
Algemene Meriete / General Merit	7.7100	+
Moeder / Dam	WW162048	
Parings - Lammers / Matings - Lambs	2	3
Vaar / Sire	WW170178	

LOT 47 | WW202413



WOOL



BREEDING VALUES

Lot Nr / Lot No	47	
Ram Nr / Ram No	WW202413	
Simbool / Symbol	AA	
Geboorte Status / Birth Status	2	
Eienskap / Trait	VTW/EBV	Sim/Sym
Speen Maternaal / Wean Maternal	0.7206	+
Speen Direk / Wean Direct	1.3761	+
Liggaamsmassa / Body Weight 12 Mts	2.3070	-
Skoonvagmassa / Clean Fleece Weight	-0.0403	+
Veseldikte / Fibre Diameter	-0.7511	+
Algemene Meriete / General Merit	9.1800	+
Moeder / Dam	WW162400	
Parings - Lammers / Matings - Lambs	3	4
Vaar / Sire	WW180310	



LOT 48 | WW202420



WOOL



BREEDING VALUES

Lot Nr / Lot No	48	
Ram Nr / Ram No	WW202420	
Simbool / Symbol	A	
Geboorte Status / Birth Status	1	
Eienskap / Trait	VTW/EBV	Sim/Sym
Speen Maternaal / Wean Maternal	1.4485	*
Speen Direk / Wean Direct	1.9226	+
Liggaamsmassa / Body Weight 12 Mts	4.3550	*
Skoonvagmassa / Clean Fleece Weight	-0.0047	-
Veseldikte / Fibre Diameter	0.2461	=
Algemene Meriete / General Merit	7.9400	+
Moeder / Dam	WW162297	
Parings - Lammers / Matings - Lambs	4	5
Vaar / Sire	WW180310	

LOT 49 | WW202424



WOOL



BREEDING VALUES

Lot Nr / Lot No	49	
Ram Nr / Ram No	WW202424	
Simbool / Symbol	AA	
Geboorte Status / Birth Status	1	
Eienskap / Trait	VTW/EBV	Sim/Sym
Speen Maternaal / Wean Maternal	-0.1439	=
Speen Direk / Wean Direct	3.5294	*
Liggaamsmassa / Body Weight 12 Mts	5.8165	*
Skoonvagmassa / Clean Fleece Weight	0.3631	*
Veseldikte / Fibre Diameter	0.2441	=
Algemene Meriete / General Merit	12.9300	+
Moeder / Dam	WW170131	
Parings - Lammers / Matings - Lambs	3	3
Vaar / Sire	WW180098	

LOT 50 | WW202440



WOOL



BREEDING VALUES

Lot Nr / Lot No	50	
Ram Nr / Ram No	WW202440	
Simbool / Symbol	AA	
Geboorte Status / Birth Status	1	
Eienskap / Trait	VTW/EBV	Sim/Sym
Speen Maternaal / Wean Maternal	-0.2123	-
Speen Direk / Wean Direct	3.8328	*
Liggaamsmassa / Body Weight 12 Mts	5.4329	*
Skoonvagnmassa / Clean Fleece Weight	0.4661	*
Veseldikte / Fibre Diameter	0.6655	-
Algemene Meriete / General Merit	12.9900	+
Moeder / Dam	WW132286	
Parings - Lammers / Matings - Lambs	7	7
Vaar / Sire	SD150015	

LOT 51 | WW202430



WOOL



BREEDING VALUES

Lot Nr / Lot No	51	
Ram Nr / Ram No	WW202430	
Simbool / Symbol	AA	
Geboorte Status / Birth Status	1	
Eienskap / Trait	VTW/EBV	sim/Sym
Speen Maternaal / Wean Maternal	-0.1499	=
Speen Direk / Wean Direct	3.7687	*
Liggaamsmassa / Body Weight 12 Mts	6.3100	*
Scoonvagmassa / Clean Fleece Weight	0.6076	*
Veseldikte / Fibre Diameter	1.4596	X
Algemene Meriete / General Merit	11.4600	+
Moeder / Dam	WW162500	
Parings - Lammers / Matings - Lambs	3	3
Vaar / Sire	SD150015	

LOT 52 | WW202434



WOOL



BREEDING VALUES

Lot Nr / Lot No	52	
Ram Nr / Ram No	WW202434	
Simbool / Symbol	A	
Geboorte Status / Birth Status	1	
Eienskap / Trait	VTW/EBV	Sim/Sym
Speen Maternaal / Wean Maternal	0.1108	=
Speen Direk / Wean Direct	1.8291	+
Liggaamsmassa / Body Weight 12 Mts	4.1431	*
Skoonvagmassa / Clean Fleece Weight	0.2828	+
Veseldikte / Fibre Diameter	1.1766	X
Algemene Meriete / General Merit	3.2100	=
Moeder / Dam	WW162054	
Parings - Lammers / Matings - Lambs	2	3
Vaar / Sire	WW170381	

LOT 53 | WW202450



WOOL



BREEDING VALUES

Lot Nr / Lot No	53	
Ram Nr / Ram No	WW202450	
Simbool / Symbol	AA	
Geboorte Status / Birth Status	2	
Eienskap / Trait	VTW/EBV	Sim/Sym
Speen Maternaal / Wean Maternal	-0.2307	-
Speen Direk / Wean Direct	2.8686	*
Liggaansmassa / Body Weight 12 Mts	4.9494	*
Scoonvagmassa / Clean Fleece Weight	0.4440	*
Veseldikte / Fibre Diameter	0.4152	-
Algemene Meriete / General Merit	12.0300	+
Moeder / Dam	WW162418	
Parings - Lammers / Matings - Lambs	4	7
Vaar / Sire	WW180098	



LOT 54 | WW202467



WOOL



BREEDING VALUES

Lot Nr / Lot No	54	
Ram Nr / Ram No	WW202467	
Simbool / Symbol	A	
Geboorte Status / Birth Status	2	
Eienskap / Trait	VTW/EBV	sim/Sym
Speen Maternaal / Wean Maternal	0.1716	+
Speen Direk / Wean Direct	1.3789	+
Liggaansmassa / Body Weight 12 Mts	2.6636	+
Skoonvagsmassa / Clean Fleece Weight	0.5191	*
Veseldikte / Fibre Diameter	1.0078	-
Algemene Meriete / General Merit	8.7700	+
Moeder / Dam	WW132031	
Parings - Lammers / Matings - Lambs	7	11
Vaar / Sire	WW180098	

LOT 55 | WW202522



WOOL



BREEDING VALUES

Lot Nr / Lot No	55	
Ram Nr / Ram No	WW202522	
Simbool / Symbol	AA	
Geboorte Status / Birth Status	1	
Eienskap / Trait	VTW/EBV	Sim/Sym
Speen Maternaal / Wean Maternal	0.5091	+
Speen Direk / Wean Direct	3.2339	*
Liggaansmassa / Body Weight 12 Mts	4.9012	*
Scoonvagmassa / Clean Fleece Weight	0.2959	+
Veseldikte / Fibre Diameter	0.3648	-
Algemene Meriete / General Merit	12.7200	+
Moeder / Dam	WW122720	
Parings - Lammers / Matings - Lambs	5	7
Vaar / Sire	WW180312	



LOT 56 | WW202540



WOOL



BREEDING VALUES

Lot Nr / Lot No	56	
Ram Nr / Ram No	WW202540	
Simbool / Symbol	A	
Geboorte Status / Birth Status	1	
Eienskap / Trait	VTW/EBV	Sim/Sym
Speen Maternaal / Wean Maternal	1.3377	*
Speen Direk / Wean Direct	1.5322	+
Liggaamsmassa / Body Weight 12 Mts	2.1595	+
Skoonvagmassa / Clean Fleece Weight	-0.1636	-
Veseldikte / Fibre Diameter	0.3525	-
Algemene Meriete / General Merit	2.6000	=
Moeder / Dam	WW122340	
Parings - Lammers / Matings - Lambs	8	11
Vaar / Sire	WW180153	

LOT 57 | WW202542



WOOL



BREEDING VALUES

Lot Nr / Lot No	57	
Ram Nr / Ram No	WW202542	
Simbool / Symbol	AA	
Geboorte Status / Birth Status	1	
Eienskap / Trait	VTW/EBV	Sim/Sym
Speen Maternaal / Wean Maternal	0.2034	+
Speen Direk / Wean Direct	2.1582	+
Liggaamsmassa / Body Weight 12 Mts	4.3915	*
Skoonvagmassa / Clean Fleece Weight	0.1986	+
Veseldikte / Fibre Diameter	0.1616	=
Algemene Meriete / General Merit	8.4700	+
Moeder / Dam	WW170196	
Parings - Lammers / Matings - Lambs	3	3
Vaar / Sire	WW180139	

LOT 58 | WW202552



WOOL



BREEDING VALUES

Lot Nr / Lot No	58	
Ram Nr / Ram No	WW202552	
Simbool / Symbol	A	
Geboorte Status / Birth Status	1	
Eienskap / Trait	VTW/EBV	Sim/Sym
Speen Maternaal / Wean Maternal	0.5667	+
Speen Direk / Wean Direct	1.9227	+
Liggaamsmassa / Body Weight 12 Mts	3.8100	*
Skoonvagmassa / Clean Fleece Weight	0.2245	+
Veseldikte / Fibre Diameter	0.6033	-
Algemene Meriete / General Merit	7.3600	+
Moeder / Dam	WW170014	
Parings - Lammers / Matings - Lambs	3	3
Vaar / Sire	WW180358	

LOT 59 | WW202586



WOOL



BREEDING VALUES

Lot Nr / Lot No	59	
Ram Nr / Ram No	WW202586	
Simbool / Symbol	AA	
Geboorte Status / Birth Status	2	
Eienskap / Trait	VTW/EBV	Sim/Sym
Speen Maternaal / Wean Maternal	-0.1577	-
Speen Direk / Wean Direct	2.8067	*
Liggaamsmassa / Body Weight 12 Mts	2.9643	+
Skoonvagnmassa / Clean Fleece Weight	0.3074	+
Veseldikte / Fibre Diameter	-0.1357	+
Algemene Meriete / General Merit	12.5000	+
Moeder / Dam	WW162014	
Parings - Lammers / Matings - Lambs	3	5
Vaar / Sire	WW180098	

LOT 60 | WW202595



WOOL



BREEDING VALUES

Lot Nr / Lot No	60	
Ram Nr / Ram No	WW202595	
Simbool / Symbol	AA	
Geboorte Status / Birth Status	2	
Eienskap / Trait	VTW/EBV	Sim/Sym
Speen Maternaal / Wean Maternal	-0.0080	=
Speen Direk / Wean Direct	2.8715	*
Liggaamsmassa / Body Weight 12 Mts	3.6994	*
Skoonvagmassa / Clean Fleece Weight	0.4956	*
Veseldikte / Fibre Diameter	1.5413	X
Algemene Meriete / General Merit	7.3000	+
Moeder / Dam	WW180070	
Parings - Lammers / Matings - Lambs	2	3
Vaar / Sire	WW180005	

LOT 61 | WW202598



WOOL



BREEDING VALUES

Lot Nr / Lot No	61	
Ram Nr / Ram No	WW202598	
Simbool / Symbol	A	
Geboorte Status / Birth Status	3	
Eienskap / Trait	VTW/EBV	Sim/Sym
Speen Maternaal / Wean Maternal	0.5531	+
Speen Direk / Wean Direct	1.4306	+
Liggaamsmassa / Body Weight 12 Mts	2.8324	+
Scoonvagmassa / Clean Fleece Weight	0.1496	+
Veseldikte / Fibre Diameter	0.3713	-
Algemene Meriete / General Merit	6.0700	+
Moeder / Dam	WW132389	
Parings - Lammers / Matings - Lambs	3	6
Vaar / Sire	WW180127	

LOT 62 | WW202639



WOOL



BREEDING VALUES

Lot Nr / Lot No	62	
Ram Nr / Ram No	WW202639	
Simbool / Symbol	A	
Geboorte Status / Birth Status	1	
Eienskap / Trait	VTW/EBV	Sim/Sym
Speen Maternaal / Wean Maternal	0.3107	+
Speen Direk / Wean Direct	3.5807	*
Liggaamsmassa / Body Weight 12 Mts	5.9671	*
Skoonvagmassa / Clean Fleece Weight	0.1187	=
Veseldikte / Fibre Diameter	-0.0025	=
Algemene Meriete / General Merit	10.9300	+
Moeder / Dam	WW170530	
Parings - Lammers / Matings - Lambs	3	3
Vaar / Sire	WW180098	

LOT 63 | WW202644



WOOL



BREEDING VALUES

Lot Nr / Lot No	63	
Ram Nr / Ram No	WW202644	
Simbool / Symbol	A	
Geboorte Status / Birth Status	1	
Eienskap / Trait	VTW/EBV	Sim/Sym
Speen Maternaal / Wean Maternal	0.4625	+
Speen Direk / Wean Direct	1.4464	+
Liggaamsmassa / Body Weight 12 Mts	1.9443	+
Skoonvagmassa / Clean Fleece Weight	-0.0654	-
Veseldikte / Fibre Diameter	-0.6435	+
Algemene Meriete / General Merit	7.1100	+
Moeder / Dam	WW162108	
Parings - Lammers / Matings - Lambs	2	2
Vaar / Sire	WW180210	

LOT 64 | WW202653



WOOL



BREEDING VALUES

Lot Nr / Lot No	64	
Ram Nr / Ram No	WW202653	
Simbool / Symbol	AA	
Geboorte Status / Birth Status	2	
Eienskap / Trait	VTW/EBV	Sim/Sym
Speen Maternaal / Wean Maternal	-0.6318	-
Speen Direk / Wean Direct	3.2531	*
Liggaansmassa / Body Weight 12 Mts	3.0828	+
Skoonvagmassa / Clean Fleece Weight	0.3646	*
Veseldikte / Fibre Diameter	-0.6571	+
Algemene Meriete / General Merit	15.8900	*
Moeder / Dam	WW170082	
Parings - Lammers / Matings - Lambs	3	5
Vaar / Sire	SD150015	

LOT 65 | WW202686



WOOL



BREEDING VALUES

Lot Nr / Lot No	65	
Ram Nr / Ram No	WW202686	
Simbool / Symbol	A	
Geboorte Status / Birth Status	2	
Eienskap / Trait	VTW/EBV	Sim/Sym
Speen Maternaal / Wean Maternal	0.9103	*
Speen Direk / Wean Direct	2.2764	*
Liggaamsmassa / Body Weight 12 Mts	4.4848	*
Skoonvagnmassa / Clean Fleece Weight	0.0176	-
Veseldikte / Fibre Diameter	-0.4205	+
Algemene Meriete / General Merit	11.0000	+
Moeder / Dam	WW152156	
Parings - Lammers / Matings - Lambs	5	7
Vaar / Sire	WW180210	



WHITE WOOLS
DOHNE STUD

COLLINGHAM MOLTENO

WWW.WHITEWOOLSDOHNE.CO.ZA