

# FARM EQUIPMENT DIGITAL AUCTION CATALOGUE



The Trusted Home of Agriculture  
Die Betroubare Tuiste van Landbou

**Date: Thurs, 08 October 2020**  
**Auction starts at: 11h00**

Auctioneer: Danie Strauss

Auction Coordinator: Christo Kleinhans

Auction Enquiries: Pieter Groenewald

Equipment Enquiries: Chris Jacobs

Contact: (072) 585 4028

Contact: (082) 602 9662

Contact: (082) 322 6945

Contact: (082) 553 6278



[REGISTER TO BID](#)

[VIEW AUCTION  
AS GUEST](#)

Please call or WhatsApp the following number if you  
require technical support on the Digital Auction Platform:

+27 (0)82 957 8827



The Trusted Home of Agriculture  
Die Betroubare Tuiste van Landbou

## EXECUTIVE CATALOGUE SUMMARY

<u>Lot Nr.</u>	<u>Asset Type</u>	<u>Year</u>	<u>Manufacturer</u>	<u>Model</u>	<u>Buyer No</u>	<u>Price</u>
Lot 1	Transportation	2016	Toyota	2.4D		
Lot 2	Tractor	2003	John Deere	6920		
Lot 3	Tractor	2009	McCormick	150		
Lot 4	Tractor	Unknown	John Deere	3130		
Lot 5	Tractor	Unknown	John Deere	6410		
Lot 6	Tractor	Unknown	Ford	4000		
Lot 7	Tractor	1962	Massey Ferguson	65		
Lot 8	Tractor	2008	Massey Ferguson	MF290SE2WD		
Lot 9	Landscaping Equipment	Unknown	Komatsu	WA180 Front-End Loader		
Lot 10	Tractor Attachments	Unknown	Unknown	Unknown		
Lot 11	Tractor Attachments	Unknown	Custom Build	Lucern Bale Fork		
Lot 12	Telescopic handler	2006	JCB	535-140		
Lot 13	Fixed Chamber Round Baler	2015	CLAAS	ROLLANT 340		
Lot 14	Fixed Chamber Round Baler	2014	CLAAS	ROLLANT 340		
Lot 15	Round Baler	2010	McHale	F5500		
Lot 16	Tip Wa	Unknown	Custom Built	10 Ton		
Lot 17	Trailer	Unknown	Custom Built	8 ton		
Lot 18	Trailer	Unknown	Custom Built	3 Ton 2-wheel		
Lot 19	Transportation	Unknown	Famaru	150cc Quad Bike		
Lot 20	Transportation	Unknown	Big Boy	TSR 250cc Dual-sport / Trail riding bike		
Lot 21	Transportation	2012	Volvo	FH440 Truck Tractor Unit		
Lot 22	Transportation	2007	Volvo	FH610 Truck Tractor Unit		
Lot 23	Harvester	Unknown	Savage	8548 Row Harvester		
Lot 24	Tractor Attachments	Unknown	Custom Build	4 Tine Ripper		
Lot 25	Tractor Attachments	Unknown	GN SuperVee	3 Tine Ripper		
Lot 26	Tractor Attachments	Unknown	Custom Build	4 Tine Tiller		
Lot 27	Tractor Attachments	Unknown	Custom Build	1 Tine Ripper		
Lot 28	Tractor Attachments	Unknown	Custom Build	3-Point Scraper		
Lot 29	Tractor Attachments	Unknown	Custom Build	Slasher / Bossieslaner		
Lot 30	Tractor Attachments	Unknown	SAFM	Soilmaster		
Lot 31	Tractor Attachments	Unknown	Custom Build	Single Row Ridger / Walblok Kontoermaker		
Lot 32	Tractor Attachments	Unknown	Tunati	Three-point hitch hay raker 4 piece		
Lot 33	Tractor Attachments	Unknown	Howard	1.8m Rotivator		
Lot 34	Tractor Attachments	Unknown	SICMA	280 Shredder		
Lot 35	Tractor Attachments	Unknown	SICMA	280 Shredder		
Lot 36	Tractor Attachments	Unknown	Agritec 432	Hammer Mill / Hamermeul		
Lot 37	Tractor Attachments	Unknown	LM 36	Hammer Mill / Hamermeul		
Lot 38	Tractor Attachments	Unknown	Vibroflex	13 Tooth Tiller		
Lot 39	Tractor Attachments	Unknown	Custom Build	24 Disc Offset / 24 Skottel Offset		
Lot 40	Other Agri Equipment	2015	Franklin Electric	SF50-200 CI-CI-PG		
Lot 41	Tractor Attachments	Unknown	Custom Build	Damscoop / Damskrop		
Lot 42	Trailer	Unknown	Venter			
Lot 43	Trailer	Unknown	Custom Build	Low Bed Trailor		
Lot 44	Trailer	Unknown	Custom Build	Single Axle Dolly		
Lot 45	Trailer	Unknown	Custom Build	800L Diesel Tank		
Lot 46	Trailer	Unknown	Jurgens	Caravan		
Lot 47	Trailer	Unknown	Custom Build	Panels for Massa Wa		
Lot 48	Other Agri Equipment	Unknown	Agriplas	Conn 38 Sand Filter		
Lot 49	Other Agri Equipment	Unknown	AE Adam	Electronic Scale		
Lot 50	Livestock Handling Equipment	Unknown	Custom Build	Cattle Trough / Voerbak		
Lot 51	Livestock Handling Equipment	Unknown	Custom Build	Cattle Trough / Voerbak		
Lot 53	Grain Handling	Unknown	Petit	Grain Cleaner		
Lot 54	Transportation	Unknown	Lifan	200cc Motorcycle		
Lot 55	Other Agri Equipment	Unknown	Custom Build	Steal Water Troughs		
Lot 56	Transportation	Unknown	Custom Build	Steal Feed Troughs		
Lot 57	Transportation	Unknown	Custom Build	Steal Gates		
Lot 58	Transportation	Unknown	Custom Build	Rubber Trough / Voerbak		
Lot 59	Transportation	Unknown	VM Systems / Agip	2 Cylinder Lister engine		
Lot 63	Tractor	1989	Massey Ferguson	240		

**Please note: More listings to be expected.**

Lot Nr.

1

Date

08 October 2020

## Detail Information

Location	Jacobsdal
Year	2016
Manufacturer	Toyota
Model	2.4D
Asset Type	Transportation
Serial Number or VIN	AHTJB8DD704750193
Condition	4 - Good
Hours	
Km's	164446

Comes with

Notes

Very good condition; front windscreen needs to be replaced

## Operator Station

Cab Type	Double Cab
Transmission Detail: Speed	
Transmission Detail: Shift Type	Manual transmission
Differential Lock	
Notes	

## Engine

Fuel Type	Diesel
Manufacturer	Toyota
Model	2.4D
Notes	

## Rear Options

Hitch Type	
PTO	
Hydraulic Outlets	
Notes	

## Body Details

Size	
Type	
Notes	Front windscreen would need to be replaced.

## Drive Train

Notes	
-------	--

## Weights

Front Wheel Weights	
Back Wheel Weights	
Front Nose Weights	
Notes	

## Undercarriage/Suspension

Tyre Manufacturer	
Front Tyre Size	80% Tread
Rear Tyre Size	80% Tread
Notes	

## Accessories

Other	
Extensions	

## Functionality Tests

Start	YES
Drives Forward	YES
Drives Backwards	YES
Brake Pedal Functions	YES

Functional Test Notes

## General

The Detailed Equipment Information is limited in scope, and BKB Auctioneers has not inspected any aspects or components of the equipment other than those expressly set forth herein. Unless expressly stated, we make no representations or warranties, express or implied, concerning the equipment or its components, including without limitation any representations or warranties concerning functionality, conformity or compliance with any safety standard or requirement of any applicable authority or regulatory body, fitness for any particular purpose, or merchantability. You are strongly advised to perform your own detailed inspection of the equipment prior to Functions

The Equipment is not tested under load or operated in all available gears. We make no representation or warranty that equipment is operating in accordance with manufacturers' specifications. No inspection has been performed with respect to any functionality aspect other than those expressly included herein. Only select photos have been provided for individual undercarriage components, and may not be indicative of the condition of the entire undercarriage as a whole.

## Dimensions

Measurements are given as an estimate only. Actual loaded dimensions may vary based on truck/trailer height and the loaded machine configuration/position. It is the buyer's responsibility to measure all loads before leaving our auction site to ensure the load is safe for transport. All measurements should be verified by the buyer. DO NOT rely on these measurements for transportation purposes.



## Supporting Documents

Certificate of Registration	YES
Vehicle Licence Certificate	YES
Service Record	YES
Other	



Scan me #1



Lot Nr.

2

Date

08 October 2020

**Detail Information**

Location	Jacobsdal
Year	2003
Manufacturer	John Deere
Model	6920
Asset Type	Tractor
Serial Number or VIN	CD6068H705198
Condition	4 - Good
Hours	7229
Km's	
Comes with	Details not supplied
Notes	None

**Operator Station**

Cab Type	
Transmission Detail: Speed	
Transmission Detail: Shift Type	
Differential Lock	
Notes	Airconditioner does not work

**Engine**

Fuel Type	
Manufacturer	
Model	
Notes	

**Rear Options**

Hitch Type	
PTO	
Hydraulic Outlets	
Notes	

**Body Details**

Size	
Type	
Notes	

**Drive Train**

Notes	
-------	--

**Weights**

Front Wheel Weights	
Back Wheel Weights	
Front Nose Weights	
Notes	

**Undercarriage/Suspension**

Tyre Manufacturer	
Front Tyre Size	90% Tread
Rear Tyre Size	90% Tread
Notes	

**Accessories**

Other	
Extensions	

**Functionality Tests**

Start	YES
Drives Forward	YES
Drives Backwards	YES
Brake Pedal Functions	YES

Functional Test Notes

**General**

The Detailed Equipment Information is limited in scope, and BKB Auctioneers has not inspected any aspects or components of the equipment other than those expressly set forth herein. Unless expressly stated, we make no representations or warranties, express or implied, concerning the equipment or its components, including without limitation any representations or warranties concerning functionality, conformity or compliance with any safety standard or requirement of any applicable authority or regulatory body, fitness for any particular purpose, or merchantability. You are strongly advised to perform your own detailed inspection of the equipment prior to

**Functions**

The equipment is not tested under load or operated in all available gears. We make no representation or warranty that equipment is operating in accordance with manufacturers' specifications. No inspection has been performed with respect to any functionality aspect other than those expressly included herein. Only select photos have been provided for individual undercarriage components, and may not be indicative of the condition of the entire undercarriage as a whole.

**Dimensions**

Measurements are given as an estimate only. Actual loaded dimensions may vary based on truck/trailer height and the loaded machine configuration/position. It is the buyer's responsibility to measure all loads before leaving our auction site to ensure the load is safe for transport. All measurements should be verified by the buyer. DO NOT rely on these measurements for transportation purposes.



**Supporting Documents**

Certificate of Registration	YES
Vehicle Licence Certificate	YES
Service Record	YES
Other	



Scan me #2



**Detail Information**

Location	Jacobsdal
Year	2009
Manufacturer	McCormick
Model	150
Asset Type	Tractor
Serial Number or VIN	RG37924U468541S
Condition	4 - Good
Hours	2140
Km's	
Comes with	
Notes	



**Operator Station**

Cab Type	
Transmission Detail: Speed	
Transmission Detail: Shift Type	
Differential Lock	
Notes	Airconditioner does not work



**Engine**

Fuel Type	
Manufacturer	
Model	
Notes	

**Rear Options**

Hitch Type	
PTO	
Hydraulic Outlets	
Notes	



**Body Details**

Size	
Type	
Notes	

**Drive Train**

Notes	
-------	--

**Weights**

Front Wheel Weights	
Back Wheel Weights	
Front Nose Weights	
Notes	



**Undercarriage/Suspension**

Tyre Manufacturer	
Front Tyre Size	90% Tread
Rear Tyre Size	90% Tread
Notes	

**Accessories**

Other	
Extensions	

**Functionality Tests**

Start	YES
Drives Forward	YES
Drives Backwards	YES
Brake Pedal Functions	YES

Functional Test Notes

**Supporting Documents**

Certificate of Registration	YES
Vehicle Licence Certificate	YES
Service Record	YES
Other	

**General**

The Detailed Equipment Information is limited in scope, and BKB Auctioneers has not inspected any aspects or components of the equipment other than those expressly set forth herein. Unless expressly stated, we make no representations or warranties, express or implied, concerning the equipment or its components, including without limitation any representations or warranties concerning functionality, conformity or compliance with any safety standard or requirement of any applicable authority or regulatory body, fitness for any particular purpose, or merchantability. You are strongly advised to perform your own detailed inspection of the equipment prior to

**Functions**  
The Equipment is not tested under load or operated in all available gears. We make no representation or warranty that equipment is operating in accordance with manufacturers' specifications. No inspection has been performed with respect to any functionality aspect other than those expressly included herein. Only select photos have been provided for individual undercarriage components, and may not be indicative of the condition of the entire undercarriage as a whole.

**Dimensions**

Measurements are given as an estimate only. Actual loaded dimensions may vary based on truck/trailer height and the loaded machine configuration/position. It is the buyer's responsibility to measure all loads before leaving our auction site to ensure the load is safe for transport. All measurements should be verified by the buyer. DO NOT rely on these measurements for transportation purposes.



**Detail Information**

Location	Jacobsdal
Year	Unknown
Manufacturer	John Deere
Model	3130
Asset Type	Tractor
Serial Number or VIN	
Condition	3 - Fair
Hours	Unknown
Km's	
Comes with	
Notes	Engine running well. Gearbox requires maintenance



LOT 4 | John Deere 3130 Tractor | BKB Digital Auctions

**Operator Station**

Cab Type	
Transmission Detail: Speed	
Transmission Detail: Shift Type	
Differential Lock	
Notes	

**Engine**

Fuel Type	
Manufacturer	
Model	
Notes	

**Rear Options**

Hitch Type	
PTO	
Hydraulic Outlets	
Notes	



LOT 4 | John Deere 3130 Tractor | BKB Digital Auctions

**Body Details**

Size	
Type	
Notes	

**Drive Train**

Notes	
-------	--

**Weights**

Front Wheel Weights	
Back Wheel Weights	
Front Nose Weights	
Notes	



LOT 4 | John Deere 3130 Tractor | BKB Digital Auctions

**Undercarriage/Suspension**

Tyre Manufacturer	
Front Tyre Size	
Rear Tyre Size	
Notes	

**Accessories**

Other	
Extensions	

**Functionality Tests**

Start	
Drives Forward	
Drives Backwards	
Brake Pedal Functions	
Functional Test Notes	

**Supporting Documents**

Certificate of Registration	
Vehicle Licence Certificate	
Service Record	
Other	

**General**

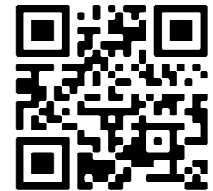
The Detailed Equipment Information is limited in scope, and BKB Auctioneers has not inspected any aspects or components of the equipment other than those expressly set forth herein. Unless expressly stated, we make no representations or warranties, express or implied, concerning the equipment or its components, including without limitation any representations or warranties concerning functionality, conformity or compliance with any safety standard or requirement of any applicable authority or regulatory body, fitness for any particular purpose, or merchantability. You are strongly advised to perform your own detailed inspection of the equipment prior to

**Functions**

The Equipment is not tested under load or operated in all available gears. We make no representation or warranty that equipment is operating in accordance with manufacturers' specifications. No inspection has been performed with respect to any functionality aspect other than those expressly included herein. Only select photos have been provided for individual undercarriage components, and may not be indicative of the condition of the entire undercarriage as a whole.

**Dimensions**

Measurements are given as an estimate only. Actual loaded dimensions may vary based on truck/trailer height and the loaded machine configuration/position. It is the buyer's responsibility to measure all loads before leaving our auction site to ensure the load is safe for transport. All measurements should be verified by the buyer. DO NOT rely on these measurements for transportation purposes.



Scan me #4



**Detail Information**

Location	Jacobsdal
Year	Unknown
Manufacturer	John Deere
Model	6410
Asset Type	Tractor
Serial Number or VIN	
Condition	4 - Good
Hours	
Km's	
Comes with	
Notes	Starter and gearbox not operational



**Operator Station**

Cab Type	
Transmission Detail: Speed	
Transmission Detail: Shift Type	
Differential Lock	
Notes	



**Engine**

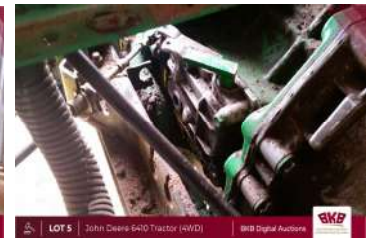
Fuel Type	
Manufacturer	
Model	
Notes	

**Rear Options**

Hitch Type	
PTO	
Hydraulic Outlets	
Notes	

**Body Details**

Size	
Type	
Notes	



**Drive Train**

Notes	
-------	--

**Weights**

Front Wheel Weights	
Back Wheel Weights	
Front Nose Weights	
Notes	

**Undercarriage/Suspension**

Tyre Manufacturer	
Front Tyre Size	
Rear Tyre Size	
Notes	

**Accessories**

Other	
Extensions	

**Functionality Tests**

Start	
Drives Forward	
Drives Backwards	
Brake Pedal Functions	
Functional Test Notes	

**Supporting Documents**

Certificate of Registration	
Vehicle Licence Certificate	
Service Record	
Other	

**General**

The Detailed Equipment Information is limited in scope, and BKB Auctioneers has not inspected any aspects or components of the equipment other than those expressly set forth herein. Unless expressly stated, we make no representations or warranties, express or implied, concerning the equipment or its components, including without limitation any representations or warranties concerning functionality, conformity or compliance with any safety standard or requirement of any applicable authority or regulatory body, fitness for any particular purpose, or merchantability. You are strongly advised to perform your own detailed inspection of the equipment prior to

**Functions**  
The Equipment is not tested under load or operated in all available gears. We make no representation or warranty that equipment is operating in accordance with manufacturers' specifications. No inspection has been performed with respect to any functionality aspect other than those expressly included herein. Only select photos have been provided for individual undercarriage components, and may not be indicative of the condition of the entire undercarriage as a whole.

**Dimensions**

Measurements are given as an estimate only. Actual loaded dimensions may vary based on truck/trailer height and the loaded machine configuration/position. It is the buyer's responsibility to measure all loads before leaving our auction site to ensure the load is safe for transport. All measurements should be verified by the buyer. DO NOT rely on these measurements for transportation purposes.





**Detail Information**

Location	Jacobsdal
Year	Unknown
Manufacturer	Ford
Model	4000
Asset Type	Tractor
Serial Number or VIN	
Condition	4 - Good
Hours	Unknown
Km's	
Comes with	
Notes	Daily in use; hour meter is out of order



**Operator Station**

Cab Type	
Transmission Detail: Speed	
Transmission Detail: Shift Type	
Differential Lock	
Notes	

**Engine**

Fuel Type	
Manufacturer	
Model	
Notes	

**Rear Options**

Hitch Type	
PTO	
Hydraulic Outlets	
Notes	

**Body Details**

Size	
Type	
Notes	

**Drive Train**

Notes	
-------	--

**Weights**

Front Wheel Weights	
Back Wheel Weights	
Front Nose Weights	
Notes	

**Undercarriage/Suspension**

Tyre Manufacturer	
Front Tyre Size	90% Tread
Rear Tyre Size	90% Tread
Notes	

**Accessories**

Other	
Extensions	

**Functionality Tests**

Start	YES
Drives Forward	YES
Drives Backwards	YES
Brake Pedal Functions	YES

Functional Test Notes

**Supporting Documents**

Certificate of Registration	
Vehicle Licence Certificate	
Service Record	
Other	

**General**

The Detailed Equipment Information is limited in scope, and BKB Auctioneers has not inspected any aspects or components of the equipment other than those expressly set forth herein. Unless expressly stated, we make no representations or warranties, express or implied, concerning the equipment or its components, including without limitation any representations or warranties concerning functionality, conformity or compliance with any safety standard or requirement of any applicable authority or regulatory body, fitness for any particular purpose, or merchantability. You are strongly advised to perform your own detailed inspection of the equipment prior to

**Functions**

The Equipment is not tested under load or operated in all available gears. We make no representation or warranty that equipment is operating in accordance with manufacturers' specifications. No inspection has been performed with respect to any functionality aspect other than those expressly included herein. Only select photos have been provided for individual undercarriage components, and may not be indicative of the condition of the entire undercarriage as a whole.

**Dimensions**

Measurements are given as an estimate only. Actual loaded dimensions may vary based on truck/trailer height and the loaded machine configuration/position. It is the buyer's responsibility to measure all loads before leaving our auction site to ensure the load is safe for transport. All measurements should be verified by the buyer. DO NOT rely on these measurements for transportation purposes.



**Detail Information**

Location	Jacobsdal
Year	1962
Manufacturer	Massey Ferguson
Model	65
Asset Type	Tractor
Serial Number or VIN	
Condition	5 - Very Good
Hours	
Km's	
Comes with	
Notes	



**Operator Station**

Cab Type	Open
Transmission Detail: Speed	4 Speed
Transmission Detail: Shift Type	Manual
Differential Lock	No
Notes	

**Engine**

Fuel Type	Diesel
Manufacturer	Massey Ferguson
Model	
Notes	



**Rear Options**

Hitch Type	
PTO	
Hydraulic Outlets	
Notes	



**Body Details**

Size	
Type	
Notes	Spotless

**Drive Train**

Notes	
-------	--

**Weights**

Front Wheel Weights	
Back Wheel Weights	
Front Nose Weights	
Notes	



**Undercarriage/Suspension**

Tyre Manufacturer	
Front Tyre Size	
Rear Tyre Size	
Notes	Brand new tyres



**Accessories**

Other Extensions	
------------------	--

**Functionality Tests**

Start	YES
Drives Forward	YES
Drives Backwards	YES
Brake Pedal Functions	YES

**Supporting Documents**

Certificate of Registration	YES
Vehicle Licence Certificate	YES
Service Record	NO
Other	

Functional Test Notes

--

**General**

The Detailed Equipment Information is limited in scope, and BKB Auctioneers has not inspected any aspects or components of the equipment other than those expressly set forth herein. Unless expressly stated, we make no representations or warranties, express or implied, concerning the equipment or its components, including without limitation any representations or warranties concerning functionality, conformity or compliance with any safety standard or requirement of any applicable authority or regulatory body, fitness for any particular purpose, or merchantability. You are strongly advised to perform your own detailed inspection of the equipment prior to Functions

The Equipment is not tested under load or operated in all available gears. We make no representation or warranty that equipment is operating in accordance with manufacturers' specifications. No inspection has been performed with respect to any functionality aspect other than those expressly included herein. Only select photos have been provided for individual undercarriage components, and may not be indicative of the condition of the entire undercarriage as a whole.

**Dimensions**

Measurements are given as an estimate only. Actual loaded dimensions may vary based on truck/trailer height and the loaded machine configuration/position. It is the buyer's responsibility to measure all loads before leaving our auction site to ensure the load is safe for transport. All measurements should be verified by the buyer. DO NOT rely on these measurements for transportation purposes.



**Detail Information**

Location	Jacobsdal
Year	2008
Manufacturer	Massey Ferguson
Model	MF290SE2WD
Asset Type	Tractor
Serial Number or VIN	ABZMF290X8T2WD063
Condition	
Hours	12972
Km's	
Comes with	
Notes	Very good condition



**Operator Station**

Cab Type	Open
Transmission Detail: Speed	
Transmission Detail: Shift Type	Manual
Differential Lock	Yes
Notes	

**Engine**

Fuel Type	Diesel
Manufacturer	Massey Ferguson
Model	
Notes	

**Rear Options**

Hitch Type	
PTO	
Hydraulic Outlets	
Notes	

**Body Details**

Size	
Type	
Notes	Good condition

**Drive Train**

Notes	
-------	--

**Weights**

Front Wheel Weights	
Back Wheel Weights	
Front Nose Weights	
Notes	

**Undercarriage/Suspension**

Tyre Manufacturer	
Front Tyre Size	95% Tread
Rear Tyre Size	95% Tread
Notes	

**Accessories**

Other	
Extensions	

**Functionality Tests**

Start	YES
Drives Forward	YES
Drives Backwards	YES
Brake Pedal Functions	YES

Functional Test Notes

**Supporting Documents**

Certificate of Registration	YES
Vehicle Licence Certificate	YES
Service Record	NO
Other	



**General**

The Detailed Equipment Information is limited in scope, and BKB Auctioneers has not inspected any aspects or components of the equipment other than those expressly set forth herein. Unless expressly stated, we make no representations or warranties, express or implied, concerning the equipment or its components, including without limitation any representations or warranties concerning functionality, conformity or compliance with any safety standard or requirement of any applicable authority or regulatory body, fitness for any particular purpose, or merchantability. You are strongly advised to perform your own detailed inspection of the equipment prior to Functions

The Equipment is not tested under load or operated in all available gears. We make no representation or warranty that equipment is operating in accordance with manufacturers' specifications. No inspection has been performed with respect to any functionality aspect other than those expressly included herein. Only select photos have been provided for individual undercarriage components, and may not be indicative of the condition of the entire undercarriage as a whole.

**Dimensions**

Measurements are given as an estimate only. Actual loaded dimensions may vary based on truck/trailer height and the loaded machine configuration/position. It is the buyer's responsibility to measure all loads before leaving our auction site to ensure the load is safe for transport. All measurements should be verified by the buyer. DO NOT rely on these measurements for transportation purposes.





**Detail Information**

Location	Jacobsdal
Year	Unknown
Manufacturer	Komatsu
Model	WA180 Front-End Loader
Asset Type	Landscaping Equipment
Serial Number or VIN	
Condition	
Hours	4527
Km's	
Comes with	
Notes	Very good working condition

**Operator Station**

Cab Type	
Transmission Detail: Speed	
Transmission Detail: Shift Type	
Differential Lock	
Notes	Windshield is cracked

**Engine**

Fuel Type	
Manufacturer	
Model	
Notes	

**Rear Options**

Hitch Type	
PTO	
Hydraulic Outlets	
Notes	

**Body Details**

Size	
Type	
Notes	

**Drive Train**

Notes	
-------	--

**Weights**

Front Wheel Weights	
Back Wheel Weights	
Front Nose Weights	
Notes	

**Undercarriage/Suspension**

Tyre Manufacturer	
Front Tyre Size	90% Tread
Rear Tyre Size	90% Tread
Notes	

**Accessories**

Other	
Extensions	

**Functionality Tests**

Start	YES
Drives Forward	YES
Drives Backwards	YES
Brake Pedal Functions	YES

Functional Test Notes	Daily in use
-----------------------	--------------

**General**

The Detailed Equipment Information is limited in scope, and BKB Auctioneers has not inspected any aspects or components of the equipment other than those expressly set forth herein. Unless expressly stated, we make no representations or warranties, express or implied, concerning the equipment or its components, including without limitation any representations or warranties concerning functionality, conformity or compliance with any safety standard or requirement of any applicable authority or regulatory body, fitness for any particular purpose, or merchantability. You are strongly advised to perform your own detailed inspection of the equipment prior to

**Functions**  
The Equipment is not tested under load or operated in all available gears. We make no representation or warranty that equipment is operating in accordance with manufacturers' specifications. No inspection has been performed with respect to any functionality aspect other than those expressly included herein. Only select photos have been provided for individual undercarriage components, and may not be indicative of the condition of the entire undercarriage as a whole.

**Dimensions**

Measurements are given as an estimate only. Actual loaded dimensions may vary based on truck/trailer height and the loaded machine configuration/position. It is the buyer's responsibility to measure all loads before leaving our auction site to ensure the load is safe for transport. All measurements should be verified by the buyer. DO NOT rely on these measurements for transportation purposes.



**Supporting Documents**

Certificate of Registration	
Vehicle Licence Certificate	
Service Record	
Other	



**Detail Information**

Location	Jacobsdal
Year	Unknown
Manufacturer	Custom Build
Model	Cotton Bale Fork
Asset Type	Tractor Attachments
Serial Number or VIN	
Condition	4 - Good
Hours	
Km's	
Comes with	
Notes	



LOT 10 | Katoen Baalvurk | BKB Digital Auctions

**Operator Station**

Cab Type	
Transmission Detail: Speed	
Transmission Detail: Shift Type	
Differential Lock	
Notes	

**Engine**

Fuel Type	
Manufacturer	
Model	
Notes	

**Rear Options**

Hitch Type	
PTO	
Hydraulic Outlets	
Notes	



LOT 10 | Katoen Baalvurk | BKB Digital Auctions

**Body Details**

Size	
Type	
Notes	

**Drive Train**

Notes	
-------	--

**Weights**

Front Wheel Weights	
Back Wheel Weights	
Front Nose Weights	
Notes	

**Undercarriage/Suspension**

Tyre Manufacturer	
Front Tyre Size	
Rear Tyre Size	
Notes	

**Accessories**

Other	
Extensions	

**Functionality Tests**

Start	
Drives Forward	
Drives Backwards	
Brake Pedal Functions	
Functional Test Notes	

**Supporting Documents**

Certificate of Registration	
Vehicle Licence Certificate	
Service Record	
Other	

**General**

The Detailed Equipment Information is limited in scope, and BKB Auctioneers has not inspected any aspects or components of the equipment other than those expressly set forth herein. Unless expressly stated, we make no representations or warranties, express or implied, concerning the equipment or its components, including without limitation any representations or warranties concerning functionality, conformity or compliance with any safety standard or requirement of any applicable authority or regulatory body, fitness for any particular purpose, or merchantability. You are strongly advised to perform your own detailed inspection of the equipment prior to

**Functions**

The Equipment is not tested under load or operated in all available gears. We make no representation or warranty that equipment is operating in accordance with manufacturers' specifications. No inspection has been performed with respect to any functionality aspect other than those expressly included herein. Only select photos have been provided for individual undercarriage components, and may not be indicative of the condition of the entire undercarriage as a whole.

**Dimensions**

Measurements are given as an estimate only. Actual loaded dimensions may vary based on truck/trailer height and the loaded machine configuration/position. It is the buyer's responsibility to measure all loads before leaving our auction site to ensure the load is safe for transport. All measurements should be verified by the buyer. DO NOT rely on these measurements for transportation purposes.



Scan me #10

Detail Information

Location	Jacobsdal
Year	Unknown
Manufacturer	Custom Build
Model	Lucern Bale Fork
Asset Type	Tractor Attachments
Serial Number or VIN	
Condition	4 - Good
Hours	
Km's	
Comes with	
Notes	



Operator Station

Cab Type	
Transmission Detail: Speed	
Transmission Detail: Shift Type	
Differential Lock	
Notes	

Engine

Fuel Type	
Manufacturer	
Model	
Notes	

Rear Options

Hitch Type	
PTO	
Hydraulic Outlets	
Notes	



Body Details

Size	
Type	
Notes	

Drive Train

Notes	
-------	--

Weights

Front Wheel Weights	
Back Wheel Weights	
Front Nose Weights	
Notes	

Undercarriage/Suspension

Tyre Manufacturer	
Front Tyre Size	
Rear Tyre Size	
Notes	

Accessories

Other	
Extensions	

Functionality Tests

Start	
Drives Forward	
Drives Backwards	
Brake Pedal Functions	

Supporting Documents

Certificate of Registration	
Vehicle Licence Certificate	
Service Record	
Other	

Functional Test Notes

General

The Detailed Equipment Information is limited in scope, and BKB Auctioneers has not inspected any aspects or components of the equipment other than those expressly set forth herein. Unless expressly stated, we make no representations or warranties, express or implied, concerning the equipment or its components, including without limitation any representations or warranties concerning functionality, conformity or compliance with any safety standard or requirement of any applicable authority or regulatory body, fitness for any particular purpose, or merchantability. You are strongly advised to perform your own detailed inspection of the equipment prior to

Functions

The Equipment is not tested under load or operated in all available gears. We make no representation or warranty that equipment is operating in accordance with manufacturers' specifications. No inspection has been performed with respect to any functionality aspect other than those expressly included herein. Only select photos have been provided for individual undercarriage components, and may not be indicative of the condition of the entire undercarriage as a whole.

Dimensions

Measurements are given as an estimate only. Actual loaded dimensions may vary based on truck/trailer height and the loaded machine configuration/position. It is the buyer's responsibility to measure all loads before leaving our auction site to ensure the load is safe for transport. All measurements should be verified by the buyer. DO NOT rely on these measurements for transportation purposes.





**Detail Information**

Location	Jacobsdal
Year	2006
Manufacturer	JCB
Model	535-140
Asset Type	Telescopic handler
Serial Number or VIN	SLP5AKJG6E1188917
Condition	5 - Very Good
Hours	
Km's	4539
Comes with	Tree pruning equipment
Notes	



**Operator Station**

Cab Type	
Transmission Detail: Speed	
Transmission Detail: Shift Type	
Differential Lock	
Notes	



**Engine**

Fuel Type	
Manufacturer	
Model	
Notes	No oil leaks

**Rear Options**

Hitch Type	
PTO	
Hydraulic Outlets	
Notes	

**Body Details**

Size	
Type	
Notes	All hydraulics is in working conditoin

**Drive Train**

Notes	
-------	--

**Weights**

Front Wheel Weights	
Back Wheel Weights	
Front Nose Weights	
Notes	

**Undercarriage/Suspension**

Tyre Manufacturer	
Front Tyre Size	90% Tread
Rear Tyre Size	90% Tread
Notes	

**Accessories**

Other	
Extensions	

**Functionality Tests**

Start	YES
Drives Forward	YES
Drives Backwards	YES
Brake Pedal Functions	YES

Functional Test Notes

**Supporting Documents**

Certificate of Registration	
Vehicle Licence Certificate	
Service Record	
Other	

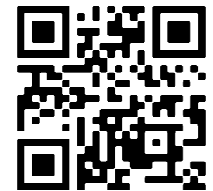
**General**

The Detailed Equipment Information is limited in scope, and BKB Auctioneers has not inspected any aspects or components of the equipment other than those expressly set forth herein. Unless expressly stated, we make no representations or warranties, express or implied, concerning the equipment or its components, including without limitation any representations or warranties concerning functionality, conformity or compliance with any safety standard or requirement of any applicable authority or regulatory body, fitness for any particular purpose, or merchantability. You are strongly advised to perform your own detailed inspection of the equipment prior to Functions

The Equipment is not tested under load or operated in all available gears. We make no representation or warranty that equipment is operating in accordance with manufacturers' specifications. No inspection has been performed with respect to any functionality aspect other than those expressly included herein. Only select photos have been provided for individual undercarriage components, and may not be indicative of the condition of the entire undercarriage as a whole.

**Dimensions**

Measurements are given as an estimate only. Actual loaded dimensions may vary based on truck/trailer height and the loaded machine configuration/position. It is the buyer's responsibility to measure all loads before leaving our auction site to ensure the load is safe for transport. All measurements should be verified by the buyer. DO NOT rely on these measurements for transportation purposes.



Scan me #12

**Detail Information**

Location	Jacobsdal
Year	2015
Manufacturer	CLAAS
Model	ROLLANT 340
Asset Type	Fixed Chamber Round Baler
Serial Number or VIN	76003674
Condition	4 - Good
Hours	
Km's	
Comes with	
Notes	30,000 bales processed; pick-up has been newly redone



**Operator Station**

Cab Type	
Transmission Detail: Speed	
Transmission Detail: Shift Type	
Differential Lock	
Notes	

**Engine**

Fuel Type	
Manufacturer	
Model	
Notes	

**Rear Options**

Hitch Type	
PTO	
Hydraulic Outlets	
Notes	



**Body Details**

Size	
Type	
Notes	

**Drive Train**

Notes	
-------	--

**Weights**

Front Wheel Weights	
Back Wheel Weights	
Front Nose Weights	
Notes	



**Undercarriage/Suspension**

Tyre Manufacturer	
Front Tyre Size	
Rear Tyre Size	
Notes	



**Accessories**

Other Extensions	
------------------	--

**Functionality Tests**

Start	
Drives Forward	
Drives Backwards	
Brake Pedal Functions	
Functional Test Notes	

**Supporting Documents**

Certificate of Registration	
Vehicle Licence Certificate	
Service Record	
Other	

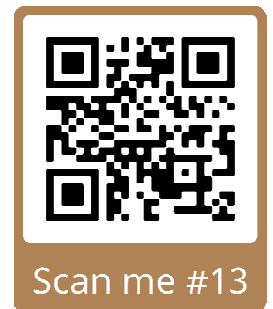
**General**

The Detailed Equipment Information is limited in scope, and BKB Auctioneers has not inspected any aspects or components of the equipment other than those expressly set forth herein. Unless expressly stated, we make no representations or warranties, express or implied, concerning the equipment or its components, including without limitation any representations or warranties concerning functionality, conformity or compliance with any safety standard or requirement of any applicable authority or regulatory body, fitness for any particular purpose, or merchantability. You are strongly advised to perform your own detailed inspection of the equipment prior to Functions

The Equipment is not tested under load or operated in all available gears. We make no representation or warranty that equipment is operating in accordance with manufacturers' specifications. No inspection has been performed with respect to any functionality aspect other than those expressly included herein. Only select photos have been provided for individual undercarriage components, and may not be indicative of the condition of the entire undercarriage as a whole.

**Dimensions**

Measurements are given as an estimate only. Actual loaded dimensions may vary based on truck/trailer height and the loaded machine configuration/position. It is the buyer's responsibility to measure all loads before leaving our auction site to ensure the load is safe for transport. All measurements should be verified by the buyer. DO NOT rely on these measurements for transportation purposes.





**Detail Information**

Location	Jacobsdal
Year	2014
Manufacturer	CLAAS
Model	ROLLANT 340
Asset Type	Fixed Chamber Round Baler
Serial Number or VIN	76003269
Condition	4 - Good
Hours	
Km's	
Comes with	
Notes	± 40,000 bales processed; pick-up has been newly refurbished



LOT 14 | Claas Rollant 340 Baler (2) | BKB Digital Auctions

**Operator Station**

Cab Type	
Transmission Detail: Speed	
Transmission Detail: Shift Type	
Differential Lock	
Notes	

**Engine**

Fuel Type	
Manufacturer	
Model	
Notes	



LOT 14 | Claas Rollant 340 Baler (2) | BKB Digital Auctions

**Rear Options**

Hitch Type	
PTO	
Hydraulic Outlets	
Notes	

**Body Details**

Size	
Type	
Notes	



LOT 14 | Claas Rollant 340 Baler (2) | BKB Digital Auctions

**Drive Train**

Notes	
-------	--

**Weights**

Front Wheel Weights	
Back Wheel Weights	
Front Nose Weights	
Notes	

**Undercarriage/Suspension**

Tyre Manufacturer	
Front Tyre Size	
Rear Tyre Size	
Notes	Tyres are in a very good condition



LOT 14 | Claas Rollant 340 Baler (2) | BKB Digital Auctions

**Accessories**

Other	
Extensions	

**Functionality Tests**

Start	
Drives Forward	
Drives Backwards	
Brake Pedal Functions	
Functional Test Notes	

**Supporting Documents**

Certificate of Registration	
Vehicle Licence Certificate	
Service Record	
Other	

**General**

The Detailed Equipment Information is limited in scope, and BKB Auctioneers has not inspected any aspects or components of the equipment other than those expressly set forth herein. Unless expressly stated, we make no representations or warranties, express or implied, concerning the equipment or its components, including without limitation any representations or warranties concerning functionality, conformity or compliance with any safety standard or requirement of any applicable authority or regulatory body, fitness for any particular purpose, or merchantability. You are strongly advised to perform your own detailed inspection of the equipment prior to Functions

The Equipment is not tested under load or operated in all available gears. We make no representation or warranty that equipment is operating in accordance with manufacturers' specifications. No inspection has been performed with respect to any functionality aspect other than those expressly included herein. Only select photos have been provided for individual undercarriage components, and may not be indicative of the condition of the entire undercarriage as a whole.

**Dimensions**

Measurements are given as an estimate only. Actual loaded dimensions may vary based on truck/trailer height and the loaded machine configuration/position. It is the buyer's responsibility to measure all loads before leaving our auction site to ensure the load is safe for transport. All measurements should be verified by the buyer. DO NOT rely on these measurements for transportation purposes.



Scan me #14



**Detail Information**

Location	Jacobsdal
Year	2010
Manufacturer	McHale
Model	F5500
Asset Type	Round Baler
Serial Number or VIN	704806
Condition	4 - Good
Hours	
Km's	
Comes with	
Notes	± 70,000 bales processed

**Operator Station**

Cab Type	
Transmission Detail: Speed	
Transmission Detail: Shift Type	
Differential Lock	
Notes	

**Engine**

Fuel Type	
Manufacturer	
Model	
Notes	

**Rear Options**

Hitch Type	
PTO	
Hydraulic Outlets	
Notes	

**Body Details**

Size	
Type	
Notes	

**Drive Train**

Notes	
-------	--

**Weights**

Front Wheel Weights	
Back Wheel Weights	
Front Nose Weights	
Notes	

**Undercarriage/Suspension**

Tyre Manufacturer	
Front Tyre Size	
Rear Tyre Size	
Notes	

**Accessories**

Other	
Extensions	

**Functionality Tests**

Start	
Drives Forward	
Drives Backwards	
Brake Pedal Functions	
Functional Test Notes	

**General**

The Detailed Equipment Information is limited in scope, and BKB Auctioneers has not inspected any aspects or components of the equipment other than those expressly set forth herein. Unless expressly stated, we make no representations or warranties, express or implied, concerning the equipment or its components, including without limitation any representations or warranties concerning functionality, conformity or compliance with any safety standard or requirement of any applicable authority or regulatory body, fitness for any particular purpose, or merchantability. You are strongly advised to perform your own detailed inspection of the equipment prior to Functions

The Equipment is not tested under load or operated in all available gears. We make no representation or warranty that equipment is operating in accordance with manufacturers' specifications. No inspection has been performed with respect to any functionality aspect other than those expressly included herein. Only select photos have been provided for individual undercarriage components, and may not be indicative of the condition of the entire undercarriage as a whole.

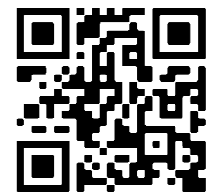
**Dimensions**

Measurements are given as an estimate only. Actual loaded dimensions may vary based on truck/trailer height and the loaded machine configuration/position. It is the buyer's responsibility to measure all loads before leaving our auction site to ensure the load is safe for transport. All measurements should be verified by the buyer. DO NOT rely on these measurements for transportation purposes.



**Supporting Documents**

Certificate of Registration	
Vehicle Licence Certificate	
Service Record	
Other	



Scan me #15

**Detail Information**

Location	Jacobsdal
Year	Unknown
Manufacturer	Custom Built
Model	10 Ton
Asset Type	Tip Wa
Serial Number or VIN	None
Condition	5 - Very Good
Hours	
Km's	
Comes with	
Notes	No olie leaks

**Operator Station**

Cab Type	
Transmission Detail: Speed	
Transmission Detail: Shift Type	
Differential Lock	
Notes	

**Engine**

Fuel Type	
Manufacturer	
Model	
Notes	

**Rear Options**

Hitch Type	
PTO	
Hydraulic Outlets	
Notes	

**Body Details**

Size	
Type	
Notes	

**Drive Train**

Notes	
-------	--

**Weights**

Front Wheel Weights	
Back Wheel Weights	
Front Nose Weights	
Notes	

**Undercarriage/Suspension**

Tyre Manufacturer	
Front Tyre Size	
Rear Tyre Size	
Notes	Tyres are in a very good condition

**Accessories**

Other	
Extensions	

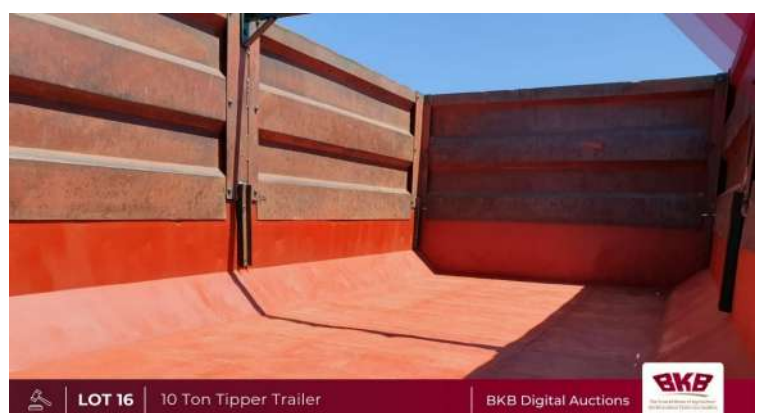
**Functionality Tests**

Start	NOT APPLICABLE
Drives Forward	YES
Drives Backwards	YES
Brake Pedal Functions	

Functional Test Notes	No olie leaks on hydraulics
-----------------------	-----------------------------

**Supporting Documents**

Certificate of Registration	
Vehicle Licence Certificate	
Service Record	
Other	



**General**

The Detailed Equipment Information is limited in scope, and BKB Auctioneers has not inspected any aspects or components of the equipment other than those expressly set forth herein. Unless expressly stated, we make no representations or warranties, express or implied, concerning the equipment or its components, including without limitation any representations or warranties concerning functionality, conformity or compliance with any safety standard or requirement of any applicable authority or regulatory body, fitness for any particular purpose, or merchantability. You are strongly advised to perform your own detailed inspection of the equipment prior to

**Functions**

The equipment is not tested under load or operated in all available gears. We make no representation or warranty that equipment is operating in accordance with manufacturers' specifications. No inspection has been performed with respect to any functionality aspect other than those expressly included herein. Only select photos have been provided for individual undercarriage components, and may not be indicative of the condition of the entire undercarriage as a whole.

**Dimensions**

Measurements are given as an estimate only. Actual loaded dimensions may vary based on truck/trailer height and the loaded machine configuration/position. It is the buyer's responsibility to measure all loads before leaving our auction site to ensure the load is safe for transport. All measurements should be verified by the buyer. DO NOT rely on these measurements for transportation purposes.





**Detail Information**

Location	Jacobsdal
Year	Unknown
Manufacturer	Custom Built
Model	8 ton
Asset Type	Trailer
Serial Number or VIN	
Condition	4 - Good
Hours	
Km's	
Comes with	
Notes	



LOT 17 | 8 Ton Trailer | BKB Digital Auctions

**Operator Station**

Cab Type	
Transmission Detail: Speed	
Transmission Detail: Shift Type	
Differential Lock	
Notes	

**Engine**

Fuel Type	
Manufacturer	
Model	
Notes	

**Rear Options**

Hitch Type	
PTO	
Hydraulic Outlets	
Notes	



LOT 17 | 8 Ton Trailer | BKB Digital Auctions

**Body Details**

Size	
Type	
Notes	

**Drive Train**

Notes	
-------	--

**Weights**

Front Wheel Weights	
Back Wheel Weights	
Front Nose Weights	
Notes	



LOT 17 | 8 Ton Trailer | BKB Digital Auctions

**Undercarriage/Suspension**

Tyre Manufacturer	
Front Tyre Size	70% Tread
Rear Tyre Size	70% Tread
Notes	

**Accessories**

Other	
Extensions	

**Functionality Tests**

Start	
Drives Forward	
Drives Backwards	
Brake Pedal Functions	
Functional Test Notes	

**Supporting Documents**

Certificate of Registration	
Vehicle Licence Certificate	
Service Record	
Other	

**General**

The Detailed Equipment Information is limited in scope, and BKB Auctioneers has not inspected any aspects or components of the equipment other than those expressly set forth herein. Unless expressly stated, we make no representations or warranties, express or implied, concerning the equipment or its components, including without limitation any representations or warranties concerning functionality, conformity or compliance with any safety standard or requirement of any applicable authority or regulatory body, fitness for any particular purpose, or merchantability. You are strongly advised to perform your own detailed inspection of the equipment prior to Functions

The Equipment is not tested under load or operated in all available gears. We make no representation or warranty that equipment is operating in accordance with manufacturers' specifications. No inspection has been performed with respect to any functionality aspect other than those expressly included herein. Only select photos have been provided for individual undercarriage components, and may not be indicative of the condition of the entire undercarriage as a whole.

**Dimensions**

Measurements are given as an estimate only. Actual loaded dimensions may vary based on truck/trailer height and the loaded machine configuration/position. It is the buyer's responsibility to measure all loads before leaving our auction site to ensure the load is safe for transport. All measurements should be verified by the buyer. DO NOT rely on these measurements for transportation purposes.





**Detail Information**

Location	Jacobsdal
Year	Unknown
Manufacturer	Custom Built
Model	3 Ton 2-wheel
Asset Type	Trailer
Serial Number or VIN	
Condition	3 - Fair
Hours	
Km's	
Comes with	
Notes	Good working condition



**Operator Station**

Cab Type	
Transmission Detail: Speed	
Transmission Detail: Shift Type	
Differential Lock	
Notes	

**Engine**

Fuel Type	
Manufacturer	
Model	
Notes	

**Rear Options**

Hitch Type	
PTO	
Hydraulic Outlets	
Notes	

**Body Details**

Size	
Type	
Notes	

**Drive Train**

Notes	
-------	--

**Weights**

Front Wheel Weights	
Back Wheel Weights	
Front Nose Weights	
Notes	

**Undercarriage/Suspension**

Tyre Manufacturer	
Front Tyre Size	65% Tread
Rear Tyre Size	65% Tread
Notes	

**Accessories**

Other	
Extensions	

**Functionality Tests**

Start	
Drives Forward	
Drives Backwards	
Brake Pedal Functions	

Functional Test Notes

**Supporting Documents**

Certificate of Registration	
Vehicle Licence Certificate	
Service Record	
Other	

**General**

The Detailed Equipment Information is limited in scope, and BKB Auctioneers has not inspected any aspects or components of the equipment other than those expressly set forth herein. Unless expressly stated, we make no representations or warranties, express or implied, concerning the equipment or its components, including without limitation any representations or warranties concerning functionality, conformity or compliance with any safety standard or requirement of any applicable authority or regulatory body, fitness for any particular purpose, or merchantability. You are strongly advised to perform your own detailed inspection of the equipment prior to

**Functions**

The Equipment is not tested under load or operated in all available gears. We make no representation or warranty that equipment is operating in accordance with manufacturers' specifications. No inspection has been performed with respect to any functionality aspect other than those expressly included herein. Only select photos have been provided for individual undercarriage components, and may not be indicative of the condition of the entire undercarriage as a whole.

**Dimensions**

Measurements are given as an estimate only. Actual loaded dimensions may vary based on truck/trailer height and the loaded machine configuration/position. It is the buyer's responsibility to measure all loads before leaving our auction site to ensure the load is safe for transport. All measurements should be verified by the buyer. DO NOT rely on these measurements for transportation purposes.



**Detail Information**

Location	Jacobsdal
Year	Unknown
Manufacturer	Famaru
Model	150cc Quad Bike
Asset Type	Transportation
Serial Number or VIN	
Condition	4 - Good
Hours	
Km's	
Comes with	
Notes	

**Operator Station**

Cab Type	
Transmission Detail: Speed	
Transmission Detail: Shift Type	
Differential Lock	
Notes	

**Engine**

Fuel Type	
Manufacturer	
Model	
Notes	

**Rear Options**

Hitch Type	
PTO	
Hydraulic Outlets	
Notes	

**Body Details**

Size	
Type	
Notes	

**Drive Train**

Notes	
-------	--

**Weights**

Front Wheel Weights	
Back Wheel Weights	
Front Nose Weights	
Notes	

**Undercarriage/Suspension**

Tyre Manufacturer	
Front Tyre Size	
Rear Tyre Size	
Notes	Tyres are in a very good condition

**Accessories**

Other	
Extensions	

**Functionality Tests**

Start	YES
Drives Forward	YES
Drives Backwards	YES
Brake Pedal Functions	YES

Functional Test Notes

**General**

The Detailed Equipment Information is limited in scope, and BKB Auctioneers has not inspected any aspects or components of the equipment other than those expressly set forth herein. Unless expressly stated, we make no representations or warranties, express or implied, concerning the equipment or its components, including without limitation any representations or warranties concerning functionality, conformity or compliance with any safety standard or requirement of any applicable authority or regulatory body, fitness for any particular purpose, or merchantability. You are strongly advised to perform your own detailed inspection of the equipment prior to

**Functions**

The Equipment is not tested under load or operated in all available gears. We make no representation or warranty that equipment is operating in accordance with manufacturers' specifications. No inspection has been performed with respect to any functionality aspect other than those expressly included herein. Only select photos have been provided for individual undercarriage components, and may not be indicative of the condition of the entire undercarriage as a whole.

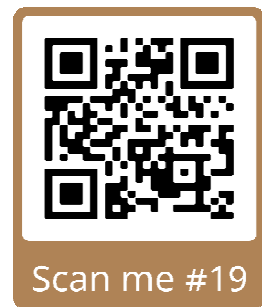
**Dimensions**

Measurements are given as an estimate only. Actual loaded dimensions may vary based on truck/trailer height and the loaded machine configuration/position. It is the buyer's responsibility to measure all loads before leaving our auction site to ensure the load is safe for transport. All measurements should be verified by the buyer. DO NOT rely on these measurements for transportation purposes.



**Supporting Documents**

Certificate of Registration	
Vehicle Licence Certificate	
Service Record	
Other	



**Detail Information**

Location	Jacobsdal
Year	Unknown
Manufacturer	Big Boy
Model	TSR 250cc Dual-sport / Trail riding bike
Asset Type	Transportation
Serial Number or VIN	
Condition	5 - Very Good
Hours	
Km's	217
Comes with	
Notes	As good as new

**Operator Station**

Cab Type	
Transmission Detail: Speed	
Transmission Detail: Shift Type	
Differential Lock	
Notes	

**Engine**

Fuel Type	
Manufacturer	
Model	
Notes	

**Rear Options**

Hitch Type	
PTO	
Hydraulic Outlets	
Notes	

**Body Details**

Size	
Type	
Notes	

**Drive Train**

Notes	
-------	--

**Weights**

Front Wheel Weights	
Back Wheel Weights	
Front Nose Weights	
Notes	

**Undercarriage/Suspension**

Tyre Manufacturer	
Front Tyre Size	
Rear Tyre Size	
Notes	

**Accessories**

Other	
Extensions	

**Functionality Tests**

Start	
Drives Forward	
Drives Backwards	
Brake Pedal Functions	

Functional Test Notes

**Supporting Documents**

Certificate of Registration	
Vehicle Licence Certificate	
Service Record	
Other	



**General**

The Detailed Equipment Information is limited in scope, and BKB Auctioneers has not inspected any aspects or components of the equipment other than those expressly set forth herein. Unless expressly stated, we make no representations or warranties, express or implied, concerning the equipment or its components, including without limitation any representations or warranties concerning functionality, conformity or compliance with any safety standard or requirement of any applicable authority or regulatory body, fitness for any particular purpose, or merchantability. You are strongly advised to perform your own detailed inspection of the equipment prior to

**Functions**

The Equipment is not tested under load or operated in all available gears. We make no representation or warranty that equipment is operating in accordance with manufacturers' specifications. No inspection has been performed with respect to any functionality aspect other than those expressly included herein. Only select photos have been provided for individual undercarriage components, and may not be indicative of the condition of the entire undercarriage as a whole.

**Dimensions**

Measurements are given as an estimate only. Actual loaded dimensions may vary based on truck/trailer height and the loaded machine configuration/position. It is the buyer's responsibility to measure all loads before leaving our auction site to ensure the load is safe for transport. All measurements should be verified by the buyer. DO NOT rely on these measurements for transportation purposes.





**Detail Information**

Location	Jacobsdal
Year	2012
Manufacturer	Volvo
Model	FH440 Truck Tractor Unit
Asset Type	Transportation
Serial Number or VIN	YV2AS02DXCM907128
Condition	5 - Very Good
Hours	
Km's	813128
Comes with	
Notes	



**Operator Station**

Cab Type	Sleeper Cab
Transmission Detail: Speed	85
Transmission Detail: Shift Type	Auto
Differential Lock	Yes
Notes	



**Engine**

Fuel Type	Diesel
Manufacturer	Volvo
Model	
Notes	

**Rear Options**

Hitch Type	
PTO	
Hydraulic Outlets	
Notes	

**Body Details**

Size	
Type	
Notes	Excellent condition



**Drive Train**

Notes	
-------	--

**Weights**

Front Wheel Weights	
Back Wheel Weights	
Front Nose Weights	
Notes	

**Undercarriage/Suspension**

Tyre Manufacturer	
Front Tyre Size	
Rear Tyre Size	
Notes	



**Accessories**

Other	
Extensions	

**Functionality Tests**

Start	YES
Drives Forward	YES
Drives Backwards	YES
Brake Pedal Functions	YES

**Supporting Documents**

Certificate of Registration	YES
Vehicle Licence Certificate	YES
Service Record	YES
Other	

Functional Test Notes **Owner-driver**

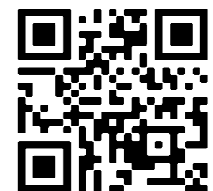
**General**

The Detailed Equipment Information is limited in scope, and BKB Auctioneers has not inspected any aspects or components of the equipment other than those expressly set forth herein. Unless expressly stated, we make no representations or warranties, express or implied, concerning the equipment or its components, including without limitation any representations or warranties concerning functionality, conformity or compliance with any safety standard or requirement of any applicable authority or regulatory body, fitness for any particular purpose, or merchantability. You are strongly advised to perform your own detailed inspection of the equipment prior to Functions

The equipment is not tested under load or operated in all available gears. We make no representation or warranty that equipment is operating in accordance with manufacturers' specifications. No inspection has been performed with respect to any functionality aspect other than those expressly included herein. Only select photos have been provided for individual undercarriage components, and may not be indicative of the condition of the entire undercarriage as a whole.

**Dimensions**

Measurements are given as an estimate only. Actual loaded dimensions may vary based on truck/trailer height and the loaded machine configuration/position. It is the buyer's responsibility to measure all loads before leaving our auction site to ensure the load is safe for transport. All measurements should be verified by the buyer. DO NOT rely on these measurements for transportation purposes.



Scan me #21

**Detail Information**

Location	Jacobsdal
Year	2007
Manufacturer	Volvo
Model	FH610 Truck Tractor Unit
Asset Type	Transportation
Serial Number or VIN	
Condition	4 - Good
Hours	
Km's	1635019
Comes with	Trailer
Notes	Daily in use



**Operator Station**

Cab Type	
Transmission Detail: Speed	
Transmission Detail: Shift Type	
Differential Lock	
Notes	

**Engine**

Fuel Type	
Manufacturer	
Model	
Notes	

**Rear Options**

Hitch Type	
PTO	
Hydraulic Outlets	
Notes	



**Body Details**

Size	
Type	
Notes	

**Drive Train**

Notes	
-------	--



**Weights**

Front Wheel Weights	
Back Wheel Weights	
Front Nose Weights	
Notes	

**Undercarriage/Suspension**

Tyre Manufacturer	
Front Tyre Size	80% Tread
Rear Tyre Size	80% Tread
Notes	



**Accessories**

Other Extensions	
------------------	--

**Functionality Tests**

Start	YES
Drives Forward	YES
Drives Backwards	YES
Brake Pedal Functions	YES

Functional Test Notes

**Supporting Documents**

Certificate of Registration	
Vehicle Licence Certificate	
Service Record	
Other	

**General**

The Detailed Equipment Information is limited in scope, and BKB Auctioneers has not inspected any aspects or components of the equipment other than those expressly set forth herein. Unless expressly stated, we make no representations or warranties, express or implied, concerning the equipment or its components, including without limitation any representations or warranties concerning functionality, conformity or compliance with any safety standard or requirement of any applicable authority or regulatory body, fitness for any particular purpose, or merchantability. You are strongly advised to perform your own detailed inspection of the equipment prior to Functions

The Equipment is not tested under load or operated in all available gears. We make no representation or warranty that equipment is operating in accordance with manufacturers' specifications. No inspection has been performed with respect to any functionality aspect other than those expressly included herein. Only select photos have been provided for individual undercarriage components, and may not be indicative of the condition of the entire undercarriage as a whole.

**Dimensions**

Measurements are given as an estimate only. Actual loaded dimensions may vary based on truck/trailer height and the loaded machine configuration/position. It is the buyer's responsibility to measure all loads before leaving our auction site to ensure the load is safe for transport. All measurements should be verified by the buyer. DO NOT rely on these measurements for transportation purposes.





Detail Information

Location	Jacobsdal
Year	Unknown
Manufacturer	Savage
Model	8548 Row Harvester
Asset Type	Harvester
Serial Number or VIN	85487159
Condition	5 - Very Good
Hours	
Km's	
Comes with	
Notes	Low usage



Operator Station

Cab Type	
Transmission Detail: Speed	
Transmission Detail: Shift Type	
Differential Lock	
Notes	

Engine

Fuel Type	
Manufacturer	
Model	
Notes	

Rear Options

Hitch Type	
PTO	
Hydraulic Outlets	
Notes	

Body Details

Size	
Type	
Notes	

Drive Train

Notes	
-------	--

Weights

Front Wheel Weights	
Back Wheel Weights	
Front Nose Weights	
Notes	

Undercarriage/Suspension

Tyre Manufacturer	
Front Tyre Size	
Rear Tyre Size	
Notes	

Accessories

Other	
Extensions	

Functionality Tests

Start	
Drives Forward	
Drives Backwards	
Brake Pedal Functions	

Functional Test Notes

General

The Detailed Equipment Information is limited in scope, and BKB Auctioneers has not inspected any aspects or components of the equipment other than those expressly set forth herein. Unless expressly stated, we make no representations or warranties, express or implied, concerning the equipment or its components, including without limitation any representations or warranties concerning functionality, conformity or compliance with any safety standard or requirement of any applicable authority or regulatory body, fitness for any particular purpose, or merchantability. You are strongly advised to perform your own detailed inspection of the equipment prior to Functions

The Equipment is not tested under load or operated in all available gears. We make no representation or warranty that equipment is operating in accordance with manufacturers' specifications. No inspection has been performed with respect to any functionality aspect other than those expressly included herein. Only select photos have been provided for individual undercarriage components, and may not be indicative of the condition of the entire undercarriage as a whole.

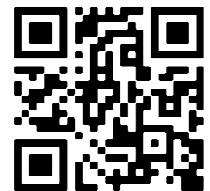
Dimensions

Measurements are given as an estimate only. Actual loaded dimensions may vary based on truck/trailer height and the loaded machine configuration/position. It is the buyer's responsibility to measure all loads before leaving our auction site to ensure the load is safe for transport. All measurements should be verified by the buyer. DO NOT rely on these measurements for transportation purposes.



Supporting Documents

Certificate of Registration	
Vehicle Licence Certificate	
Service Record	
Other	



Scan me #23



Detail Information

Location	Jacobsdal
Year	Unknown
Manufacturer	Custom Build
Model	4 Tine Ripper
Asset Type	Tractor Attachments
Serial Number or VIN	
Condition	3 - Fair
Hours	
Km's	
Comes with	Roller
Notes	

Operator Station

Cab Type	
Transmission Detail: Speed	
Transmission Detail: Shift Type	
Differential Lock	
Notes	

Engine

Fuel Type	
Manufacturer	
Model	
Notes	

Rear Options

Hitch Type	
PTO	
Hydraulic Outlets	
Notes	

Body Details

Size	
Type	
Notes	

Drive Train

Notes	
-------	--

Weights

Front Wheel Weights	
Back Wheel Weights	
Front Nose Weights	
Notes	

Undercarriage/Suspension

Tyre Manufacturer	
Front Tyre Size	
Rear Tyre Size	
Notes	

Accessories

Other	
Extensions	

Functionality Tests

Start	
Drives Forward	
Drives Backwards	
Brake Pedal Functions	

Functional Test Notes

General

The Detailed Equipment Information is limited in scope, and BKB Auctioneers has not inspected any aspects or components of the equipment other than those expressly set forth herein. Unless expressly stated, we make no representations or warranties, express or implied, concerning the equipment or its components, including without limitation any representations or warranties concerning functionality, conformity or compliance with any safety standard or requirement of any applicable authority or regulatory body, fitness for any particular purpose, or merchantability. You are strongly advised to perform your own detailed inspection of the equipment prior to Functions

The Equipment is not tested under load or operated in all available gears. We make no representation or warranty that equipment is operating in accordance with manufacturers' specifications. No inspection has been performed with respect to any functionality aspect other than those expressly included herein. Only select photos have been provided for individual undercarriage components, and may not be indicative of the condition of the entire undercarriage as a whole.

Dimensions

Measurements are given as an estimate only. Actual loaded dimensions may vary based on truck/trailer height and the loaded machine configuration/position. It is the buyer's responsibility to measure all loads before leaving our auction site to ensure the load is safe for transport. All measurements should be verified by the buyer. DO NOT rely on these measurements for transportation purposes.



LOT 24 | 4 Tine Ripper with Roller | BKB Digital Auctions



LOT 24 | 4 Tine Ripper with Roller | BKB Digital Auctions



LOT 24 | 4 Tine Ripper with Roller | BKB Digital Auctions

Supporting Documents

Certificate of Registration	
Vehicle Licence Certificate	
Service Record	
Other	



Scan me #24

Detail Information

Location	Jacobsdal
Year	Unknown
Manufacturer	GN SuperVee
Model	3 Tine Ripper
Asset Type	Tractor Attachments
Serial Number or VIN	
Condition	3 - Fair
Hours	
Km's	
Comes with	
Notes	



LOT 25 | GN Super Vee Ripper | BKB Digital Auctions

Operator Station

Cab Type	
Transmission Detail: Speed	
Transmission Detail: Shift Type	
Differential Lock	
Notes	

Engine

Fuel Type	
Manufacturer	
Model	
Notes	

Rear Options

Hitch Type	
PTO	
Hydraulic Outlets	
Notes	

Body Details

Size	
Type	
Notes	

Drive Train

Notes	
-------	--

Weights

Front Wheel Weights	
Back Wheel Weights	
Front Nose Weights	
Notes	

Undercarriage/Suspension

Tyre Manufacturer	
Front Tyre Size	
Rear Tyre Size	
Notes	

Accessories

Other	
Extensions	

Functionality Tests

Start	
Drives Forward	
Drives Backwards	
Brake Pedal Functions	

Functional Test Notes

Supporting Documents

Certificate of Registration	
Vehicle Licence Certificate	
Service Record	
Other	



LOT 25 | GN Super Vee Ripper | BKB Digital Auctions



LOT 25 | GN Super Vee Ripper | BKB Digital Auctions

General

The Detailed Equipment Information is limited in scope, and BKB Auctioneers has not inspected any aspects or components of the equipment other than those expressly set forth herein. Unless expressly stated, we make no representations or warranties, express or implied, concerning the equipment or its components, including without limitation any representations or warranties concerning functionality, conformity or compliance with any safety standard or requirement of any applicable authority or regulatory body, fitness for any particular purpose, or merchantability. You are strongly advised to perform your own detailed inspection of the equipment prior to

Functions

The Equipment is not tested under load or operated in all available gears. We make no representation or warranty that equipment is operating in accordance with manufacturers' specifications. No inspection has been performed with respect to any functionality aspect other than those expressly included herein. Only select photos have been provided for individual undercarriage components, and may not be indicative of the condition of the entire undercarriage as a whole.

Dimensions

Measurements are given as an estimate only. Actual loaded dimensions may vary based on truck/trailer height and the loaded machine configuration/position. It is the buyer's responsibility to measure all loads before leaving our auction site to ensure the load is safe for transport. All measurements should be verified by the buyer. DO NOT rely on these measurements for transportation purposes.





**Detail Information**

Location	Jacobsdal
Year	Unknown
Manufacturer	Custom Build
Model	4 Tine Tiller
Asset Type	Tractor Attachments
Serial Number or VIN	
Condition	3 - Fair
Hours	
Km's	
Comes with	
Notes	

**Operator Station**

Cab Type	
Transmission Detail: Speed	
Transmission Detail: Shift Type	
Differential Lock	
Notes	

**Engine**

Fuel Type	
Manufacturer	
Model	
Notes	

**Rear Options**

Hitch Type	
PTO	
Hydraulic Outlets	
Notes	

**Body Details**

Size	
Type	
Notes	

**Drive Train**

Notes	
-------	--

**Weights**

Front Wheel Weights	
Back Wheel Weights	
Front Nose Weights	
Notes	

**Undercarriage/Suspension**

Tyre Manufacturer	
Front Tyre Size	
Rear Tyre Size	
Notes	

**Accessories**

Other	
Extensions	

**Functionality Tests**

Start	
Drives Forward	
Drives Backwards	
Brake Pedal Functions	

Functional Test Notes

**Supporting Documents**

Certificate of Registration	
Vehicle Licence Certificate	
Service Record	
Other	

**General**

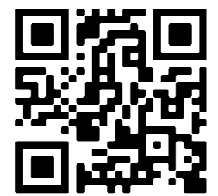
The Detailed Equipment Information is limited in scope, and BKB Auctioneers has not inspected any aspects or components of the equipment other than those expressly set forth herein. Unless expressly stated, we make no representations or warranties, express or implied, concerning the equipment or its components, including without limitation any representations or warranties concerning functionality, conformity or compliance with any safety standard or requirement of any applicable authority or regulatory body, fitness for any particular purpose, or merchantability. You are strongly advised to perform your own detailed inspection of the equipment prior to

**Functions**

The Equipment is not tested under load or operated in all available gears. We make no representation or warranty that equipment is operating in accordance with manufacturers' specifications. No inspection has been performed with respect to any functionality aspect other than those expressly included herein. Only select photos have been provided for individual undercarriage components, and may not be indicative of the condition of the entire undercarriage as a whole.

**Dimensions**

Measurements are given as an estimate only. Actual loaded dimensions may vary based on truck/trailer height and the loaded machine configuration/position. It is the buyer's responsibility to measure all loads before leaving our auction site to ensure the load is safe for transport. All measurements should be verified by the buyer. DO NOT rely on these measurements for transportation purposes.



Scan me #27

Detail Information

Location	Jacobsdal
Year	Unknown
Manufacturer	Custom Build
Model	1 Tine Ripper
Asset Type	Tractor Attachments
Serial Number or VIN	
Condition	4 - Good
Hours	
Km's	
Comes with	
Notes	



Operator Station

Cab Type	
Transmission Detail: Speed	
Transmission Detail: Shift Type	
Differential Lock	
Notes	

Engine

Fuel Type	
Manufacturer	
Model	
Notes	

Rear Options

Hitch Type	
PTO	
Hydraulic Outlets	
Notes	

Body Details

Size	
Type	
Notes	

Drive Train

Notes	
-------	--

Weights

Front Wheel Weights	
Back Wheel Weights	
Front Nose Weights	
Notes	

Undercarriage/Suspension

Tyre Manufacturer	
Front Tyre Size	
Rear Tyre Size	
Notes	

Accessories

Other	
Extensions	

Functionality Tests

Start	
Drives Forward	
Drives Backwards	
Brake Pedal Functions	

Functional Test Notes

Supporting Documents

Certificate of Registration	
Vehicle Licence Certificate	
Service Record	
Other	

General

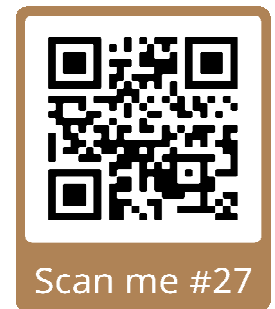
The Detailed Equipment Information is limited in scope, and BKB Auctioneers has not inspected any aspects or components of the equipment other than those expressly set forth herein. Unless expressly stated, we make no representations or warranties, express or implied, concerning the equipment or its components, including without limitation any representations or warranties concerning functionality, conformity or compliance with any safety standard or requirement of any applicable authority or regulatory body, fitness for any particular purpose, or merchantability. You are strongly advised to perform your own detailed inspection of the equipment prior to

Functions

The Equipment is not tested under load or operated in all available gears. We make no representation or warranty that equipment is operating in accordance with manufacturers' specifications. No inspection has been performed with respect to any functionality aspect other than those expressly included herein. Only select photos have been provided for individual undercarriage components, and may not be indicative of the condition of the entire undercarriage as a whole.

Dimensions

Measurements are given as an estimate only. Actual loaded dimensions may vary based on truck/trailer height and the loaded machine configuration/position. It is the buyer's responsibility to measure all loads before leaving our auction site to ensure the load is safe for transport. All measurements should be verified by the buyer. DO NOT rely on these measurements for transportation purposes.



Scan me #27



**Detail Information**

Location	Jacobsdal
Year	Unknown
Manufacturer	Custom Build
Model	3-Point Scraper
Asset Type	Tractor Attachments
Serial Number or VIN	
Condition	3 - Fair
Hours	
Km's	
Comes with	
Notes	



**Operator Station**

Cab Type	
Transmission Detail: Speed	
Transmission Detail: Shift Type	
Differential Lock	
Notes	



**Engine**

Fuel Type	
Manufacturer	
Model	
Notes	

**Rear Options**

Hitch Type	
PTO	
Hydraulic Outlets	
Notes	

**Body Details**

Size	
Type	
Notes	



**Drive Train**

Notes	
-------	--

**Weights**

Front Wheel Weights	
Back Wheel Weights	
Front Nose Weights	
Notes	

**Undercarriage/Suspension**

Tyre Manufacturer	
Front Tyre Size	
Rear Tyre Size	
Notes	

**Accessories**

Other	
Extensions	

**Functionality Tests**

Start	
Drives Forward	
Drives Backwards	
Brake Pedal Functions	
Functional Test Notes	

**Supporting Documents**

Certificate of Registration	
Vehicle Licence Certificate	
Service Record	
Other	

**General**

The Detailed Equipment Information is limited in scope, and BKB Auctioneers has not inspected any aspects or components of the equipment other than those expressly set forth herein. Unless expressly stated, we make no representations or warranties, express or implied, concerning the equipment or its components, including without limitation any representations or warranties concerning functionality, conformity or compliance with any safety standard or requirement of any applicable authority or regulatory body, fitness for any particular purpose, or merchantability. You are strongly advised to perform your own detailed inspection of the equipment prior to

**Functions**  
The equipment is not tested under load or operated in all available gears. We make no representation or warranty that equipment is operating in accordance with manufacturers' specifications. No inspection has been performed with respect to any functionality aspect other than those expressly included herein. Only select photos have been provided for individual undercarriage components, and may not be indicative of the condition of the entire undercarriage as a whole.

**Dimensions**

Measurements are given as an estimate only. Actual loaded dimensions may vary based on truck/trailer height and the loaded machine configuration/position. It is the buyer's responsibility to measure all loads before leaving our auction site to ensure the load is safe for transport. All measurements should be verified by the buyer. DO NOT rely on these measurements for transportation purposes.



**Detail Information**

Location	Jacobsdal
Year	Unknown
Manufacturer	Custom Build
Model	Slasher / Bossieslaner
Asset Type	Tractor Attachments
Serial Number or VIN	
Condition	3 - Fair
Hours	
Km's	
Comes with	
Notes	



LOT 29 | Slasher

BKB Digital Auctions



**Operator Station**

Cab Type	
Transmission Detail: Speed	
Transmission Detail: Shift Type	
Differential Lock	
Notes	

**Engine**

Fuel Type	
Manufacturer	
Model	
Notes	

**Rear Options**

Hitch Type	
PTO	
Hydraulic Outlets	
Notes	

**Body Details**

Size	
Type	
Notes	

**Drive Train**

Notes	
-------	--

**Weights**

Front Wheel Weights	
Back Wheel Weights	
Front Nose Weights	
Notes	

**Undercarriage/Suspension**

Tyre Manufacturer	
Front Tyre Size	
Rear Tyre Size	
Notes	

**Accessories**

Other	
Extensions	

**Functionality Tests**

Start	
Drives Forward	
Drives Backwards	
Brake Pedal Functions	

Functional Test Notes

**Supporting Documents**

Certificate of Registration	
Vehicle Licence Certificate	
Service Record	
Other	

**General**

The Detailed Equipment Information is limited in scope, and BKB Auctioneers has not inspected any aspects or components of the equipment other than those expressly set forth herein. Unless expressly stated, we make no representations or warranties, express or implied, concerning the equipment or its components, including without limitation any representations or warranties concerning functionality, conformity or compliance with any safety standard or requirement of any applicable authority or regulatory body, fitness for any particular purpose, or merchantability. You are strongly advised to perform your own detailed inspection of the equipment prior to **Functions**

The Equipment is not tested under load or operated in all available gears. We make no representation or warranty that equipment is operating in accordance with manufacturers' specifications. No inspection has been performed with respect to any functionality aspect other than those expressly included herein. Only select photos have been provided for individual undercarriage components, and may not be indicative of the condition of the entire undercarriage as a whole.

**Dimensions**

Measurements are given as an estimate only. Actual loaded dimensions may vary based on truck/trailer height and the loaded machine configuration/position. It is the buyer's responsibility to measure all loads before leaving our auction site to ensure the load is safe for transport. All measurements should be verified by the buyer. DO NOT rely on these measurements for transportation purposes.



LOT 29 | Slasher

BKB Digital Auctions



Scan me #29



**Detail Information**

Location	Jacobsdal
Year	Unknown
Manufacturer	SAFM
Model	Soilmaster
Asset Type	Tractor Attachments
Serial Number or VIN	
Condition	3 - Fair
Hours	
Km's	
Comes with	
Notes	



LOT 30 | SAFM Soilmaster | BKB Digital Auctions

**Operator Station**

Cab Type	
Transmission Detail: Speed	
Transmission Detail: Shift Type	
Differential Lock	
Notes	

**Engine**

Fuel Type	
Manufacturer	
Model	
Notes	

**Rear Options**

Hitch Type	
PTO	
Hydraulic Outlets	
Notes	



LOT 30 | SAFM Soilmaster | BKB Digital Auctions

**Body Details**

Size	
Type	
Notes	

**Drive Train**

Notes	
-------	--

**Weights**

Front Wheel Weights	
Back Wheel Weights	
Front Nose Weights	
Notes	

**Undercarriage/Suspension**

Tyre Manufacturer	
Front Tyre Size	
Rear Tyre Size	
Notes	

**Accessories**

Other	
Extensions	

**Functionality Tests**

Start	
Drives Forward	
Drives Backwards	
Brake Pedal Functions	

Functional Test Notes

**Supporting Documents**

Certificate of Registration	
Vehicle Licence Certificate	
Service Record	
Other	

**General**

The Detailed Equipment Information is limited in scope, and BKB Auctioneers has not inspected any aspects or components of the equipment other than those expressly set forth herein. Unless expressly stated, we make no representations or warranties, express or implied, concerning the equipment or its components, including without limitation any representations or warranties concerning functionality, conformity or compliance with any safety standard or requirement of any applicable authority or regulatory body, fitness for any particular purpose, or merchantability. You are strongly advised to perform your own detailed inspection of the equipment prior to

**Functions**

The Equipment is not tested under load or operated in all available gears. We make no representation or warranty that equipment is operating in accordance with manufacturers' specifications. No inspection has been performed with respect to any functionality aspect other than those expressly included herein. Only select photos have been provided for individual undercarriage components, and may not be indicative of the condition of the entire undercarriage as a whole.

**Dimensions**

Measurements are given as an estimate only. Actual loaded dimensions may vary based on truck/trailer height and the loaded machine configuration/position. It is the buyer's responsibility to measure all loads before leaving our auction site to ensure the load is safe for transport. All measurements should be verified by the buyer. DO NOT rely on these measurements for transportation purposes.



**Detail Information**

Location	Jacobsdal
Year	Unknown
Manufacturer	Custom Build
Model	Single Row Ridger / Walblok Kontoermaker
Asset Type	Tractor Attachments
Serial Number or VIN	
Condition	3 - Fair
Hours	
Km's	
Comes with	
Notes	



**Operator Station**

Cab Type	
Transmission Detail: Speed	
Transmission Detail: Shift Type	
Differential Lock	
Notes	

**Engine**

Fuel Type	
Manufacturer	
Model	
Notes	

**Rear Options**

Hitch Type	
PTO	
Hydraulic Outlets	
Notes	

**Body Details**

Size	
Type	
Notes	

**Drive Train**

Notes	
-------	--

**Weights**

Front Wheel Weights	
Back Wheel Weights	
Front Nose Weights	
Notes	

**Undercarriage/Suspension**

Tyre Manufacturer	
Front Tyre Size	
Rear Tyre Size	
Notes	

**Accessories**

Other	
Extensions	

**Functionality Tests**

Start	
Drives Forward	
Drives Backwards	
Brake Pedal Functions	
Functional Test Notes	

**Supporting Documents**

Certificate of Registration	
Vehicle Licence Certificate	
Service Record	
Other	

**General**

The Detailed Equipment Information is limited in scope, and BKB Auctioneers has not inspected any aspects or components of the equipment other than those expressly set forth herein. Unless expressly stated, we make no representations or warranties, express or implied, concerning the equipment or its components, including without limitation any representations or warranties concerning functionality, conformity or compliance with any safety standard or requirement of any applicable authority or regulatory body, fitness for any particular purpose, or merchantability. You are strongly advised to perform your own detailed inspection of the equipment prior to

**Functions**

The Equipment is not tested under load or operated in all available gears. We make no representation or warranty that equipment is operating in accordance with manufacturers' specifications. No inspection has been performed with respect to any functionality aspect other than those expressly included herein. Only select photos have been provided for individual undercarriage components, and may not be indicative of the condition of the entire undercarriage as a whole.

**Dimensions**

Measurements are given as an estimate only. Actual loaded dimensions may vary based on truck/trailer height and the loaded machine configuration/position. It is the buyer's responsibility to measure all loads before leaving our auction site to ensure the load is safe for transport. All measurements should be verified by the buyer. DO NOT rely on these measurements for transportation purposes.



Scan me #31



**Detail Information**

Location	Jacobsdal
Year	Unknown
Manufacturer	Tunati
Model	Three-point hitch hay raker 4 piece
Asset Type	Tractor Attachments
Serial Number or VIN	
Condition	3 - Fair
Hours	
Km's	
Comes with	
Notes	



LOT 32 | Tunati Rake | BKB Digital Auctions

**Operator Station**

Cab Type	
Transmission Detail: Speed	
Transmission Detail: Shift Type	
Differential Lock	
Notes	

**Engine**

Fuel Type	
Manufacturer	
Model	
Notes	

**Rear Options**

Hitch Type	
PTO	
Hydraulic Outlets	
Notes	

**Body Details**

Size	
Type	
Notes	

**Drive Train**

Notes	
-------	--

**Weights**

Front Wheel Weights	
Back Wheel Weights	
Front Nose Weights	
Notes	

**Undercarriage/Suspension**

Tyre Manufacturer	
Front Tyre Size	
Rear Tyre Size	
Notes	



LOT 32 | Tunati Rake | BKB Digital Auctions

**Accessories**

Other	
Extensions	

**Functionality Tests**

Start	
Drives Forward	
Drives Backwards	
Brake Pedal Functions	

Functional Test Notes

**Supporting Documents**

Certificate of Registration	
Vehicle Licence Certificate	
Service Record	
Other	

**General**

The Detailed Equipment Information is limited in scope, and BKB Auctioneers has not inspected any aspects or components of the equipment other than those expressly set forth herein. Unless expressly stated, we make no representations or warranties, express or implied, concerning the equipment or its components, including without limitation any representations or warranties concerning functionality, conformity or compliance with any safety standard or requirement of any applicable authority or regulatory body, fitness for any particular purpose, or merchantability. You are strongly advised to perform your own detailed inspection of the equipment prior to

**Functions**

The equipment is not tested under load or operated in all available gears. We make no representation or warranty that equipment is operating in accordance with manufacturers' specifications. No inspection has been performed with respect to any functionality aspect other than those expressly included herein. Only select photos have been provided for individual undercarriage components, and may not be indicative of the condition of the entire undercarriage as a whole.

**Dimensions**

Measurements are given as an estimate only. Actual loaded dimensions may vary based on truck/trailer height and the loaded machine configuration/position. It is the buyer's responsibility to measure all loads before leaving our auction site to ensure the load is safe for transport. All measurements should be verified by the buyer. DO NOT rely on these measurements for transportation purposes.



LOT 32 | Tunati Rake | BKB Digital Auctions



**Detail Information**

Location	Jacobsdal
Year	Unknown
Manufacturer	Howard
Model	1.8m Rotivator
Asset Type	Tractor Attachments
Serial Number or VIN	
Condition	3 - Fair
Hours	
Km's	
Comes with	
Notes	



LOT 33 | Howard 1.8m Rotivator | BKB Digital Auctions

**Operator Station**

Cab Type	
Transmission Detail: Speed	
Transmission Detail: Shift Type	
Differential Lock	
Notes	

**Engine**

Fuel Type	
Manufacturer	
Model	
Notes	

**Rear Options**

Hitch Type	
PTO	
Hydraulic Outlets	
Notes	

**Body Details**

Size	
Type	
Notes	

**Drive Train**

Notes	
-------	--

**Weights**

Front Wheel Weights	
Back Wheel Weights	
Front Nose Weights	
Notes	

**Undercarriage/Suspension**

Tyre Manufacturer	
Front Tyre Size	
Rear Tyre Size	
Notes	



LOT 33 | Howard 1.8m Rotivator | BKB Digital Auctions

**Accessories**

Other	
Extensions	

**Functionality Tests**

Start	
Drives Forward	
Drives Backwards	
Brake Pedal Functions	
Functional Test Notes	

**Supporting Documents**

Certificate of Registration	
Vehicle Licence Certificate	
Service Record	
Other	

**General**

The Detailed Equipment Information is limited in scope, and BKB Auctioneers has not inspected any aspects or components of the equipment other than those expressly set forth herein. Unless expressly stated, we make no representations or warranties, express or implied, concerning the equipment or its components, including without limitation any representations or warranties concerning functionality, conformity or compliance with any safety standard or requirement of any applicable authority or regulatory body, fitness for any particular purpose, or merchantability. You are strongly advised to perform your own detailed inspection of the equipment prior to

**Functions**

The equipment is not tested under load or operated in all available gears. We make no representation or warranty that equipment is operating in accordance with manufacturers' specifications. No inspection has been performed with respect to any functionality aspect other than those expressly included herein. Only select photos have been provided for individual undercarriage components, and may not be indicative of the condition of the entire undercarriage as a whole.

**Dimensions**

Measurements are given as an estimate only. Actual loaded dimensions may vary based on truck/trailer height and the loaded machine configuration/position. It is the buyer's responsibility to measure all loads before leaving our auction site to ensure the load is safe for transport. All measurements should be verified by the buyer. DO NOT rely on these measurements for transportation purposes.



LOT 33 | Howard 1.8m Rotivator | BKB Digital Auctions





**Detail Information**

Location	Jacobsdal
Year	Unknown
Manufacturer	SICMA
Model	280 Shredder
Asset Type	Tractor Attachments
Serial Number or VIN	
Condition	3 - Fair
Hours	
Km's	
Comes with	Roller
Notes	



LOT 34 | SICMA 280 Shredder (with roller) | BKB Digital Auctions

**Operator Station**

Cab Type	
Transmission Detail: Speed	
Transmission Detail: Shift Type	
Differential Lock	
Notes	



LOT 34 | SICMA 280 Shredder (with roller) | BKB Digital Auctions

**Engine**

Fuel Type	
Manufacturer	
Model	
Notes	

**Rear Options**

Hitch Type	
PTO	
Hydraulic Outlets	
Notes	

**Body Details**

Size	
Type	
Notes	

**Drive Train**

Notes	
-------	--

**Weights**

Front Wheel Weights	
Back Wheel Weights	
Front Nose Weights	
Notes	



LOT 34 | SICMA 280 Shredder (with roller) | BKB Digital Auctions

**Undercarriage/Suspension**

Tyre Manufacturer	
Front Tyre Size	
Rear Tyre Size	
Notes	

**Accessories**

Other	
Extensions	

**Functionality Tests**

Start	
Drives Forward	
Drives Backwards	
Brake Pedal Functions	
Functional Test Notes	

**Supporting Documents**

Certificate of Registration	
Vehicle Licence Certificate	
Service Record	
Other	

**General**

The Detailed Equipment Information is limited in scope, and BKB Auctioneers has not inspected any aspects or components of the equipment other than those expressly set forth herein. Unless expressly stated, we make no representations or warranties, express or implied, concerning the equipment or its components, including without limitation any representations or warranties concerning functionality, conformity or compliance with any safety standard or requirement of any applicable authority or regulatory body, fitness for any particular purpose, or merchantability. You are strongly advised to perform your own detailed inspection of the equipment prior to

**Functions**

The Equipment is not tested under load or operated in all available gears. We make no representation or warranty that equipment is operating in accordance with manufacturers' specifications. No inspection has been performed with respect to any functionality aspect other than those expressly included herein. Only select photos have been provided for individual undercarriage components, and may not be indicative of the condition of the entire undercarriage as a whole.

**Dimensions**

Measurements are given as an estimate only. Actual loaded dimensions may vary based on truck/trailer height and the loaded machine configuration/position. It is the buyer's responsibility to measure all loads before leaving our auction site to ensure the load is safe for transport. All measurements should be verified by the buyer. DO NOT rely on these measurements for transportation purposes.



Scan me #34

**Detail Information**

Location	Jacobsdal
Year	Unknown
Manufacturer	SICMA
Model	280 Shredder
Asset Type	Tractor Attachments
Serial Number or VIN	
Condition	4 - Good
Hours	
Km's	
Comes with	Roller
Notes	

**Operator Station**

Cab Type	
Transmission Detail: Speed	
Transmission Detail: Shift Type	
Differential Lock	
Notes	

**Engine**

Fuel Type	
Manufacturer	
Model	
Notes	

**Rear Options**

Hitch Type	
PTO	
Hydraulic Outlets	
Notes	

**Body Details**

Size	
Type	
Notes	

**Drive Train**

Notes	
-------	--

**Weights**

Front Wheel Weights	
Back Wheel Weights	
Front Nose Weights	
Notes	

**Undercarriage/Suspension**

Tyre Manufacturer	
Front Tyre Size	
Rear Tyre Size	
Notes	

**Accessories**

Other	
Extensions	

**Functionality Tests**

Start	
Drives Forward	
Drives Backwards	
Brake Pedal Functions	

Functional Test Notes

**Supporting Documents**

Certificate of Registration	
Vehicle Licence Certificate	
Service Record	
Other	

**General**

The Detailed Equipment Information is limited in scope, and BKB Auctioneers has not inspected any aspects or components of the equipment other than those expressly set forth herein. Unless expressly stated, we make no representations or warranties, express or implied, concerning the equipment or its components, including without limitation any representations or warranties concerning functionality, conformity or compliance with any safety standard or requirement of any applicable authority or regulatory body, fitness for any particular purpose, or merchantability. You are strongly advised to perform your own detailed inspection of the equipment prior to

**Functions**

The Equipment is not tested under load or operated in all available gears. We make no representation or warranty that equipment is operating in accordance with manufacturers' specifications. No inspection has been performed with respect to any functionality aspect other than those expressly included herein. Only select photos have been provided for individual undercarriage components, and may not be indicative of the condition of the entire undercarriage as a whole.

**Dimensions**

Measurements are given as an estimate only. Actual loaded dimensions may vary based on truck/trailer height and the loaded machine configuration/position. It is the buyer's responsibility to measure all loads before leaving our auction site to ensure the load is safe for transport. All measurements should be verified by the buyer. DO NOT rely on these measurements for transportation purposes.



Scan me #35



Detail Information

Location	Jacobsdal
Year	Unknown
Manufacturer	Agritec 432
Model	Hammer Mill / Hamermeul
Asset Type	Tractor Attachments
Serial Number or VIN	
Condition	3 - Fair
Hours	
Km's	
Comes with	
Notes	



Operator Station

Cab Type	
Transmission Detail: Speed	
Transmission Detail: Shift Type	
Differential Lock	
Notes	

Engine

Fuel Type	
Manufacturer	
Model	
Notes	

Rear Options

Hitch Type	
PTO	
Hydraulic Outlets	
Notes	

Body Details

Size	
Type	
Notes	

Drive Train

Notes	
-------	--

Weights

Front Wheel Weights	
Back Wheel Weights	
Front Nose Weights	
Notes	

Undercarriage/Suspension

Tyre Manufacturer	
Front Tyre Size	
Rear Tyre Size	
Notes	

Accessories

Other	
Extensions	

Functionality Tests

Start	
Drives Forward	
Drives Backwards	
Brake Pedal Functions	

Functional Test Notes

Supporting Documents

Certificate of Registration	
Vehicle Licence Certificate	
Service Record	
Other	

General

The Detailed Equipment Information is limited in scope, and BKB Auctioneers has not inspected any aspects or components of the equipment other than those expressly set forth herein. Unless expressly stated, we make no representations or warranties, express or implied, concerning the equipment or its components, including without limitation any representations or warranties concerning functionality, conformity or compliance with any safety standard or requirement of any applicable authority or regulatory body, fitness for any particular purpose, or merchantability. You are strongly advised to perform your own detailed inspection of the equipment prior to

Functions

The Equipment is not tested under load or operated in all available gears. We make no representation or warranty that equipment is operating in accordance with manufacturers' specifications. No inspection has been performed with respect to any functionality aspect other than those expressly included herein. Only select photos have been provided for individual undercarriage components, and may not be indicative of the condition of the entire undercarriage as a whole.

Dimensions

Measurements are given as an estimate only. Actual loaded dimensions may vary based on truck/trailer height and the loaded machine configuration/position. It is the buyer's responsibility to measure all loads before leaving our auction site to ensure the load is safe for transport. All measurements should be verified by the buyer. DO NOT rely on these measurements for transportation purposes.



Scan me #36

**Detail Information**

Location	Jacobsdal
Year	Unknown
Manufacturer	LM 36
Model	Hammer Mill / Hamermeul
Asset Type	Tractor Attachments
Serial Number or VIN	
Condition	3 - Fair
Hours	
Km's	
Comes with	
Notes	



**Operator Station**

Cab Type	
Transmission Detail: Speed	
Transmission Detail: Shift Type	
Differential Lock	
Notes	

**Engine**

Fuel Type	
Manufacturer	
Model	
Notes	

**Rear Options**

Hitch Type	
PTO	
Hydraulic Outlets	
Notes	



**Body Details**

Size	
Type	
Notes	

**Drive Train**

Notes	
-------	--

**Weights**

Front Wheel Weights	
Back Wheel Weights	
Front Nose Weights	
Notes	

**Undercarriage/Suspension**

Tyre Manufacturer	
Front Tyre Size	
Rear Tyre Size	
Notes	

**Accessories**

Other	
Extensions	

**Functionality Tests**

Start	
Drives Forward	
Drives Backwards	
Brake Pedal Functions	
Functional Test Notes	

**Supporting Documents**

Certificate of Registration	
Vehicle Licence Certificate	
Service Record	
Other	

**General**

The Detailed Equipment Information is limited in scope, and BKB Auctioneers has not inspected any aspects or components of the equipment other than those expressly set forth herein. Unless expressly stated, we make no representations or warranties, express or implied, concerning the equipment or its components, including without limitation any representations or warranties concerning functionality, conformity or compliance with any safety standard or requirement of any applicable authority or regulatory body, fitness for any particular purpose, or merchantability. You are strongly advised to perform your own detailed inspection of the equipment prior to

**Functions**

The Equipment is not tested under load or operated in all available gears. We make no representation or warranty that equipment is operating in accordance with manufacturers' specifications. No inspection has been performed with respect to any functionality aspect other than those expressly included herein. Only select photos have been provided for individual undercarriage components, and may not be indicative of the condition of the entire undercarriage as a whole.

**Dimensions**

Measurements are given as an estimate only. Actual loaded dimensions may vary based on truck/trailer height and the loaded machine configuration/position. It is the buyer's responsibility to measure all loads before leaving our auction site to ensure the load is safe for transport. All measurements should be verified by the buyer. DO NOT rely on these measurements for transportation purposes.





Detail Information

Location	Jacobsdal
Year	Unknown
Manufacturer	Vibroflex
Model	13 Tooth Tiller
Asset Type	Tractor Attachments
Serial Number or VIN	
Condition	4 - Good
Hours	
Km's	
Comes with	
Notes	



Operator Station

Cab Type	
Transmission Detail: Speed	
Transmission Detail: Shift Type	
Differential Lock	
Notes	

Engine

Fuel Type	
Manufacturer	
Model	
Notes	

Rear Options

Hitch Type	
PTO	
Hydraulic Outlets	
Notes	



Body Details

Size	
Type	
Notes	

Drive Train

Notes	
-------	--

Weights

Front Wheel Weights	
Back Wheel Weights	
Front Nose Weights	
Notes	



Undercarriage/Suspension

Tyre Manufacturer	
Front Tyre Size	
Rear Tyre Size	
Notes	

Accessories

Other	
Extensions	

Functionality Tests

Start	
Drives Forward	
Drives Backwards	
Brake Pedal Functions	

Functional Test Notes

Supporting Documents

Certificate of Registration	
Vehicle Licence Certificate	
Service Record	
Other	

General

The Detailed Equipment Information is limited in scope, and BKB Auctioneers has not inspected any aspects or components of the equipment other than those expressly set forth herein. Unless expressly stated, we make no representations or warranties, express or implied, concerning the equipment or its components, including without limitation any representations or warranties concerning functionality, conformity or compliance with any safety standard or requirement of any applicable authority or regulatory body, fitness for any particular purpose, or merchantability. You are strongly advised to perform your own detailed inspection of the equipment prior to

Functions

The Equipment is not tested under load or operated in all available gears. We make no representation or warranty that equipment is operating in accordance with manufacturers' specifications. No inspection has been performed with respect to any functionality aspect other than those expressly included herein. Only select photos have been provided for individual undercarriage components, and may not be indicative of the condition of the entire undercarriage as a whole.

Dimensions

Measurements are given as an estimate only. Actual loaded dimensions may vary based on truck/trailer height and the loaded machine configuration/position. It is the buyer's responsibility to measure all loads before leaving our auction site to ensure the load is safe for transport. All measurements should be verified by the buyer. DO NOT rely on these measurements for transportation purposes.



**Detail Information**

Location	Jacobsdal
Year	Unknown
Manufacturer	Custom Build
Model	24 Disc Offset / 24 Skottel Offset
Asset Type	Tractor Attachments
Serial Number or VIN	
Condition	4 - Good
Hours	
Km's	
Comes with	
Notes	Hydraulic cylinder refurbishment



**Operator Station**

Cab Type	
Transmission Detail: Speed	
Transmission Detail: Shift Type	
Differential Lock	
Notes	

**Engine**

Fuel Type	
Manufacturer	
Model	
Notes	

**Rear Options**

Hitch Type	
PTO	
Hydraulic Outlets	
Notes	



**Body Details**

Size	
Type	
Notes	

**Drive Train**

Notes	
-------	--

**Weights**

Front Wheel Weights	
Back Wheel Weights	
Front Nose Weights	
Notes	

**Undercarriage/Suspension**

Tyre Manufacturer	
Front Tyre Size	
Rear Tyre Size	
Notes	

**Accessories**

Other	
Extensions	

**Functionality Tests**

Start	
Drives Forward	
Drives Backwards	
Brake Pedal Functions	

Functional Test Notes

**Supporting Documents**

Certificate of Registration	
Vehicle Licence Certificate	
Service Record	
Other	

**General**

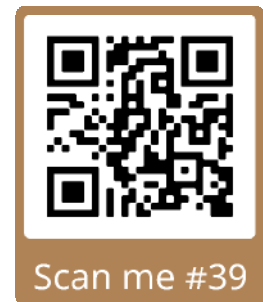
The Detailed Equipment Information is limited in scope, and BKB Auctioneers has not inspected any aspects or components of the equipment other than those expressly set forth herein. Unless expressly stated, we make no representations or warranties, express or implied, concerning the equipment or its components, including without limitation any representations or warranties concerning functionality, conformity or compliance with any safety standard or requirement of any applicable authority or regulatory body, fitness for any particular purpose, or merchantability. You are strongly advised to perform your own detailed inspection of the equipment prior to

**Functions**

The Equipment is not tested under load or operated in all available gears. We make no representation or warranty that equipment is operating in accordance with manufacturers' specifications. No inspection has been performed with respect to any functionality aspect other than those expressly included herein. Only select photos have been provided for individual undercarriage components, and may not be indicative of the condition of the entire undercarriage as a whole.

**Dimensions**

Measurements are given as an estimate only. Actual loaded dimensions may vary based on truck/trailer height and the loaded machine configuration/position. It is the buyer's responsibility to measure all loads before leaving our auction site to ensure the load is safe for transport. All measurements should be verified by the buyer. DO NOT rely on these measurements for transportation purposes.





**Detail Information**

Location	Jacobsdal
Year	2015
Manufacturer	Franklin Electric
Model	SF50-200 CI-CI-PG
Asset Type	Other Agri Equipment
Serial Number or VIN	89230
Condition	4 - Good
Hours	
Km's	
Comes with	Volledige suig en lewerings kant
Notes	Frame Size: 160m2 15 Kwv



LOT 40 | 50/200 Pump - 15kW Motor | BKB Digital Auctions

**Operator Station**

Cab Type	
Transmission Detail: Speed	
Transmission Detail: Shift Type	
Differential Lock	
Notes	

**Engine**

Fuel Type	
Manufacturer	
Model	
Notes	

**Rear Options**

Hitch Type	
PTO	
Hydraulic Outlets	
Notes	

**Body Details**

Size	
Type	
Notes	

**Drive Train**

Notes	
-------	--

**Weights**

Front Wheel Weights	
Back Wheel Weights	
Front Nose Weights	
Notes	

**Undercarriage/Suspension**

Tyre Manufacturer	
Front Tyre Size	
Rear Tyre Size	
Notes	

**Accessories**

Other	
Extensions	

**Functionality Tests**

Start	
Drives Forward	
Drives Backwards	
Brake Pedal Functions	
Functional Test Notes	

**Supporting Documents**

Certificate of Registration	
Vehicle Licence Certificate	
Service Record	
Other	



LOT 40 | 50/200 Pump - 15kW Motor | BKB Digital Auctions



LOT 40 | 50/200 Pump - 15kW Motor | BKB Digital Auctions

**General**

The Detailed Equipment Information is limited in scope, and BKB Auctioneers has not inspected any aspects or components of the equipment other than those expressly set forth herein. Unless expressly stated, we make no representations or warranties, express or implied, concerning the equipment or its components, including without limitation any representations or warranties concerning functionality, conformity or compliance with any safety standard or requirement of any applicable authority or regulatory body, fitness for any particular purpose, or merchantability. You are strongly advised to perform your own detailed inspection of the equipment prior to Functions

The Equipment is not tested under load or operated in all available gears. We make no representation or warranty that equipment is operating in accordance with manufacturers' specifications. No inspection has been performed with respect to any functionality aspect other than those expressly included herein. Only select photos have been provided for individual undercarriage components, and may not be indicative of the condition of the entire undercarriage as a whole.

**Dimensions**

Measurements are given as an estimate only. Actual loaded dimensions may vary based on truck/trailer height and the loaded machine configuration/position. It is the buyer's responsibility to measure all loads before leaving our auction site to ensure the load is safe for transport. All measurements should be verified by the buyer. DO NOT rely on these measurements for transportation purposes.



Scan me #40

**Detail Information**

Location	Jacobsdal
Year	Unknown
Manufacturer	Custom Build
Model	Damscoop / Damskrop
Asset Type	Tractor Attachments
Serial Number or VIN	
Condition	4 - Good
Hours	
Km's	
Comes with	
Notes	



LOT 41 | Damskrop / Scoop | BKB Digital Auctions

**Operator Station**

Cab Type	
Transmission Detail: Speed	
Transmission Detail: Shift Type	
Differential Lock	
Notes	

**Engine**

Fuel Type	
Manufacturer	
Model	
Notes	

**Rear Options**

Hitch Type	
PTO	
Hydraulic Outlets	
Notes	

**Body Details**

Size	
Type	
Notes	

**Drive Train**

Notes	
-------	--

**Weights**

Front Wheel Weights	
Back Wheel Weights	
Front Nose Weights	
Notes	

**Undercarriage/Suspension**

Tyre Manufacturer	
Front Tyre Size	
Rear Tyre Size	
Notes	

**Accessories**

Other	
Extensions	

**Functionality Tests**

Start	
Drives Forward	
Drives Backwards	
Brake Pedal Functions	

Functional Test Notes

**Supporting Documents**

Certificate of Registration	
Vehicle Licence Certificate	
Service Record	
Other	

**General**

The Detailed Equipment Information is limited in scope, and BKB Auctioneers has not inspected any aspects or components of the equipment other than those expressly set forth herein. Unless expressly stated, we make no representations or warranties, express or implied, concerning the equipment or its components, including without limitation any representations or warranties concerning functionality, conformity or compliance with any safety standard or requirement of any applicable authority or regulatory body, fitness for any particular purpose, or merchantability. You are strongly advised to perform your own detailed inspection of the equipment prior to

**Functions**

The Equipment is not tested under load or operated in all available gears. We make no representation or warranty that equipment is operating in accordance with manufacturers' specifications. No inspection has been performed with respect to any functionality aspect other than those expressly included herein. Only select photos have been provided for individual undercarriage components, and may not be indicative of the condition of the entire undercarriage as a whole.

**Dimensions**

Measurements are given as an estimate only. Actual loaded dimensions may vary based on truck/trailer height and the loaded machine configuration/position. It is the buyer's responsibility to measure all loads before leaving our auction site to ensure the load is safe for transport. All measurements should be verified by the buyer. DO NOT rely on these measurements for transportation purposes.



Scan me #41



**Detail Information**

Location	Jacobsdal
Year	Unknown
Manufacturer	Venter
Model	
Asset Type	Trailer
Serial Number or VIN	
Condition	4 - Good
Hours	
Km's	
Comes with	
Notes	



**Operator Station**

Cab Type	
Transmission Detail: Speed	
Transmission Detail: Shift Type	
Differential Lock	
Notes	

**Engine**

Fuel Type	
Manufacturer	
Model	
Notes	

**Rear Options**

Hitch Type	
PTO	
Hydraulic Outlets	
Notes	

**Body Details**

Size	
Type	
Notes	

**Drive Train**

Notes	
-------	--

**Weights**

Front Wheel Weights	
Back Wheel Weights	
Front Nose Weights	
Notes	

**Undercarriage/Suspension**

Tyre Manufacturer	
Front Tyre Size	
Rear Tyre Size	
Notes	

**Accessories**

Other	
Extensions	

**Functionality Tests**

Start	
Drives Forward	YES
Drives Backwards	YES
Brake Pedal Functions	

**Supporting Documents**

Certificate of Registration	
Vehicle Licence Certificate	YES
Service Record	
Other	

Functional Test Notes

**General**

The Detailed Equipment Information is limited in scope, and BKB Auctioneers has not inspected any aspects or components of the equipment other than those expressly set forth herein. Unless expressly stated, we make no representations or warranties, express or implied, concerning the equipment or its components, including without limitation any representations or warranties concerning functionality, conformity or compliance with any safety standard or requirement of any applicable authority or regulatory body, fitness for any particular purpose, or merchantability. You are strongly advised to perform your own detailed inspection of the equipment prior to

**Functions**

The Equipment is not tested under load or operated in all available gears. We make no representation or warranty that equipment is operating in accordance with manufacturers' specifications. No inspection has been performed with respect to any functionality aspect other than those expressly included herein. Only select photos have been provided for individual undercarriage components, and may not be indicative of the condition of the entire undercarriage as a whole.

**Dimensions**

Measurements are given as an estimate only. Actual loaded dimensions may vary based on truck/trailer height and the loaded machine configuration/position. It is the buyer's responsibility to measure all loads before leaving our auction site to ensure the load is safe for transport. All measurements should be verified by the buyer. DO NOT rely on these measurements for transportation purposes.



**Detail Information**

Location	Jacobsdal
Year	Unknown
Manufacturer	Custom Build
Model	Low Bed Trailer
Asset Type	Trailer
Serial Number or VIN	
Condition	3 - Fair
Hours	
Km's	
Comes with	
Notes	



**Operator Station**

Cab Type	
Transmission Detail: Speed	
Transmission Detail: Shift Type	
Differential Lock	
Notes	

**Engine**

Fuel Type	
Manufacturer	
Model	
Notes	

**Rear Options**

Hitch Type	
PTO	
Hydraulic Outlets	
Notes	



**Body Details**

Size	
Type	
Notes	

**Drive Train**

Notes	
-------	--

**Weights**

Front Wheel Weights	
Back Wheel Weights	
Front Nose Weights	
Notes	

**Undercarriage/Suspension**

Tyre Manufacturer	
Front Tyre Size	
Rear Tyre Size	
Notes	



**Accessories**

Other	
Extensions	

**Functionality Tests**

Start	
Drives Forward	YES
Drives Backwards	YES
Brake Pedal Functions	
Functional Test Notes	

**Supporting Documents**

Certificate of Registration	
Vehicle Licence Certificate	YES
Service Record	
Other	

**General**

The Detailed Equipment Information is limited in scope, and BKB Auctioneers has not inspected any aspects or components of the equipment other than those expressly set forth herein. Unless expressly stated, we make no representations or warranties, express or implied, concerning the equipment or its components, including without limitation any representations or warranties concerning functionality, conformity or compliance with any safety standard or requirement of any applicable authority or regulatory body, fitness for any particular purpose, or merchantability. You are strongly advised to perform your own detailed inspection of the equipment prior to **Functions**

The Equipment is not tested under load or operated in all available gears. We make no representation or warranty that equipment is operating in accordance with manufacturers' specifications. No inspection has been performed with respect to any functionality aspect other than those expressly included herein. Only select photos have been provided for individual undercarriage components, and may not be indicative of the condition of the entire undercarriage as a whole.

**Dimensions**

Measurements are given as an estimate only. Actual loaded dimensions may vary based on truck/trailer height and the loaded machine configuration/position. It is the buyer's responsibility to measure all loads before leaving our auction site to ensure the load is safe for transport. All measurements should be verified by the buyer. DO NOT rely on these measurements for transportation purposes.





Detail Information

Location	Jacobsdal
Year	Unknown
Manufacturer	Custom Build
Model	Single Axle Dolly
Asset Type	Trailer
Serial Number or VIN	
Condition	
Hours	
Km's	
Comes with	
Notes	



Operator Station

Cab Type	
Transmission Detail: Speed	
Transmission Detail: Shift Type	
Differential Lock	
Notes	

Engine

Fuel Type	
Manufacturer	
Model	
Notes	

Rear Options

Hitch Type	
PTO	
Hydraulic Outlets	
Notes	



Body Details

Size	
Type	
Notes	

Drive Train

Notes	
-------	--

Weights

Front Wheel Weights	
Back Wheel Weights	
Front Nose Weights	
Notes	

Undercarriage/Suspension

Tyre Manufacturer	
Front Tyre Size	
Rear Tyre Size	
Notes	

Accessories

Other	
Extensions	

Functionality Tests

Start	
Drives Forward	
Drives Backwards	
Brake Pedal Functions	

Supporting Documents

Certificate of Registration	
Vehicle Licence Certificate	
Service Record	
Other	

Functional Test Notes

General

The Detailed Equipment Information is limited in scope, and BKB Auctioneers has not inspected any aspects or components of the equipment other than those expressly set forth herein. Unless expressly stated, we make no representations or warranties, express or implied, concerning the equipment or its components, including without limitation any representations or warranties concerning functionality, conformity or compliance with any safety standard or requirement of any applicable authority or regulatory body, fitness for any particular purpose, or merchantability. You are strongly advised to perform your own detailed inspection of the equipment prior to

**Functions**  
The equipment is not tested under load or operated in all available gears. We make no representation or warranty that equipment is operating in accordance with manufacturers' specifications. No inspection has been performed with respect to any functionality aspect other than those expressly included herein. Only select photos have been provided for individual undercarriage components, and may not be indicative of the condition of the entire undercarriage as a whole.

Dimensions

Measurements are given as an estimate only. Actual loaded dimensions may vary based on truck/trailer height and the loaded machine configuration/position. It is the buyer's responsibility to measure all loads before leaving our auction site to ensure the load is safe for transport. All measurements should be verified by the buyer. DO NOT rely on these measurements for transportation purposes.



**Detail Information**

Location	Jacobsdal
Year	Unknown
Manufacturer	Custom Build
Model	800L Diesel Tank
Asset Type	Trailer
Serial Number or VIN	
Condition	5 - Very Good
Hours	
Km's	
Comes with	
Notes	



**Operator Station**

Cab Type	
Transmission Detail: Speed	
Transmission Detail: Shift Type	
Differential Lock	
Notes	

**Engine**

Fuel Type	
Manufacturer	
Model	
Notes	

**Rear Options**

Hitch Type	
PTO	
Hydraulic Outlets	
Notes	

**Body Details**

Size	
Type	
Notes	

**Drive Train**

Notes	
-------	--

**Weights**

Front Wheel Weights	
Back Wheel Weights	
Front Nose Weights	
Notes	

**Undercarriage/Suspension**

Tyre Manufacturer	
Front Tyre Size	
Rear Tyre Size	
Notes	

**Accessories**

Other	
Extensions	

**Functionality Tests**

Start	
Drives Forward	
Drives Backwards	
Brake Pedal Functions	
Functional Test Notes	

**Supporting Documents**

Certificate of Registration	
Vehicle Licence Certificate	
Service Record	
Other	

**General**

The Detailed Equipment Information is limited in scope, and BKB Auctioneers has not inspected any aspects or components of the equipment other than those expressly set forth herein. Unless expressly stated, we make no representations or warranties, express or implied, concerning the equipment or its components, including without limitation any representations or warranties concerning functionality, conformity or compliance with any safety standard or requirement of any applicable authority or regulatory body, fitness for any particular purpose, or merchantability. You are strongly advised to perform your own detailed inspection of the equipment prior to

**Functions**

The Equipment is not tested under load or operated in all available gears. We make no representation or warranty that equipment is operating in accordance with manufacturers' specifications. No inspection has been performed with respect to any functionality aspect other than those expressly included herein. Only select photos have been provided for individual undercarriage components, and may not be indicative of the condition of the entire undercarriage as a whole.

**Dimensions**

Measurements are given as an estimate only. Actual loaded dimensions may vary based on truck/trailer height and the loaded machine configuration/position. It is the buyer's responsibility to measure all loads before leaving our auction site to ensure the load is safe for transport. All measurements should be verified by the buyer. DO NOT rely on these measurements for transportation purposes.





**Detail Information**

Location	Jacobsdal
Year	Unknown
Manufacturer	Jurgens
Model	Caravan
Asset Type	Trailer
Serial Number or VIN	
Condition	3 - Fair
Hours	
Km's	
Comes with	
Notes	



LOT 46 Caravan | BKB Digital Auctions

**Operator Station**

Cab Type	
Transmission Detail: Speed	
Transmission Detail: Shift Type	
Differential Lock	
Notes	

**Engine**

Fuel Type	
Manufacturer	
Model	
Notes	

**Rear Options**

Hitch Type	
PTO	
Hydraulic Outlets	
Notes	



LOT 46 Caravan | BKB Digital Auctions

**Body Details**

Size	
Type	
Notes	

**Drive Train**

Notes	
-------	--

**Weights**

Front Wheel Weights	
Back Wheel Weights	
Front Nose Weights	
Notes	

**Undercarriage/Suspension**

Tyre Manufacturer	
Front Tyre Size	
Rear Tyre Size	
Notes	



LOT 46 Caravan | BKB Digital Auctions

**Accessories**

Other	
Extensions	

**Functionality Tests**

Start	
Drives Forward	YES
Drives Backwards	YES
Brake Pedal Functions	

**Supporting Documents**

Certificate of Registration	
Vehicle Licence Certificate	NO
Service Record	
Other	

Functional Test Notes

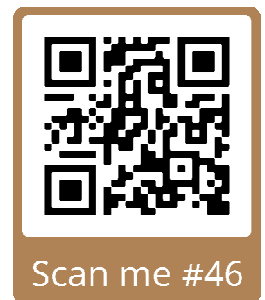
**General**

The Detailed Equipment Information is limited in scope, and BKB Auctioneers has not inspected any aspects or components of the equipment other than those expressly set forth herein. Unless expressly stated, we make no representations or warranties, express or implied, concerning the equipment or its components, including without limitation any representations or warranties concerning functionality, conformity or compliance with any safety standard or requirement of any applicable authority or regulatory body, fitness for any particular purpose, or merchantability. You are strongly advised to perform your own detailed inspection of the equipment prior to Functions

The Equipment is not tested under load or operated in all available gears. We make no representation or warranty that equipment is operating in accordance with manufacturers' specifications. No inspection has been performed with respect to any functionality aspect other than those expressly included herein. Only select photos have been provided for individual undercarriage components, and may not be indicative of the condition of the entire undercarriage as a whole.

**Dimensions**

Measurements are given as an estimate only. Actual loaded dimensions may vary based on truck/trailer height and the loaded machine configuration/position. It is the buyer's responsibility to measure all loads before leaving our auction site to ensure the load is safe for transport. All measurements should be verified by the buyer. DO NOT rely on these measurements for transportation purposes.



Scan me #46

Detail Information

Location	Jacobsdal
Year	Unknown
Manufacturer	Custom Build
Model	Panels for Massa Wa
Asset Type	Trailer
Serial Number or VIN	
Condition	3 - Fair
Hours	
Km's	
Comes with	
Notes	



Operator Station

Cab Type	
Transmission Detail: Speed	
Transmission Detail: Shift Type	
Differential Lock	
Notes	

Engine

Fuel Type	
Manufacturer	
Model	
Notes	

Rear Options

Hitch Type	
PTO	
Hydraulic Outlets	
Notes	



Body Details

Size	
Type	
Notes	

Drive Train

Notes	
-------	--

Weights

Front Wheel Weights	
Back Wheel Weights	
Front Nose Weights	
Notes	

Undercarriage/Suspension

Tyre Manufacturer	
Front Tyre Size	
Rear Tyre Size	
Notes	

Accessories

Other	
Extensions	

Functionality Tests

Start	
Drives Forward	
Drives Backwards	
Brake Pedal Functions	

Supporting Documents

Certificate of Registration	
Vehicle Licence Certificate	
Service Record	
Other	

Functional Test Notes

General

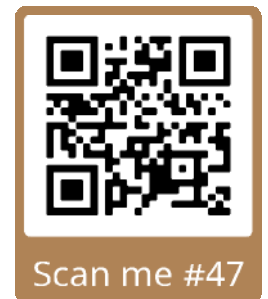
The Detailed Equipment Information is limited in scope, and BKB Auctioneers has not inspected any aspects or components of the equipment other than those expressly set forth herein. Unless expressly stated, we make no representations or warranties, express or implied, concerning the equipment or its components, including without limitation any representations or warranties concerning functionality, conformity or compliance with any safety standard or requirement of any applicable authority or regulatory body, fitness for any particular purpose, or merchantability. You are strongly advised to perform your own detailed inspection of the equipment prior to

Functions

The Equipment is not tested under load or operated in all available gears. We make no representation or warranty that equipment is operating in accordance with manufacturers' specifications. No inspection has been performed with respect to any functionality aspect other than those expressly included herein. Only select photos have been provided for individual undercarriage components, and may not be indicative of the condition of the entire undercarriage as a whole.

Dimensions

Measurements are given as an estimate only. Actual loaded dimensions may vary based on truck/trailer height and the loaded machine configuration/position. It is the buyer's responsibility to measure all loads before leaving our auction site to ensure the load is safe for transport. All measurements should be verified by the buyer. DO NOT rely on these measurements for transportation purposes.





**Detail Information**

Location	Jacobsdal
Year	Unknown
Manufacturer	Agriplas
Model	Conn 38 Sand Filter
Asset Type	Other Agri Equipment
Serial Number or VIN	
Condition	3 - Fair
Hours	
Km's	
Comes with	
Notes	



**Operator Station**

Cab Type	
Transmission Detail: Speed	
Transmission Detail: Shift Type	
Differential Lock	
Notes	

**Engine**

Fuel Type	
Manufacturer	
Model	
Notes	

**Rear Options**

Hitch Type	
PTO	
Hydraulic Outlets	
Notes	

**Body Details**

Size	
Type	
Notes	

**Drive Train**

Notes	
-------	--

**Weights**

Front Wheel Weights	
Back Wheel Weights	
Front Nose Weights	
Notes	

**Undercarriage/Suspension**

Tyre Manufacturer	
Front Tyre Size	
Rear Tyre Size	
Notes	

**Accessories**

Other	
Extensions	

**Functionality Tests**

Start	
Drives Forward	
Drives Backwards	
Brake Pedal Functions	

Functional Test Notes

**Supporting Documents**

Certificate of Registration	
Vehicle Licence Certificate	
Service Record	
Other	

**General**

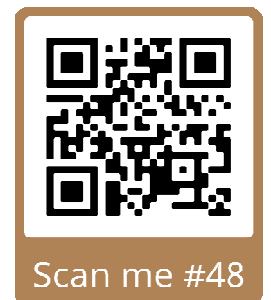
The Detailed Equipment Information is limited in scope, and BKB Auctioneers has not inspected any aspects or components of the equipment other than those expressly set forth herein. Unless expressly stated, we make no representations or warranties, express or implied, concerning the equipment or its components, including without limitation any representations or warranties concerning functionality, conformity or compliance with any safety standard or requirement of any applicable authority or regulatory body, fitness for any particular purpose, or merchantability. You are strongly advised to perform your own detailed inspection of the equipment prior to

**Functions**

The Equipment is not tested under load or operated in all available gears. We make no representation or warranty that equipment is operating in accordance with manufacturers' specifications. No inspection has been performed with respect to any functionality aspect other than those expressly included herein. Only select photos have been provided for individual undercarriage components, and may not be indicative of the condition of the entire undercarriage as a whole.

**Dimensions**

Measurements are given as an estimate only. Actual loaded dimensions may vary based on truck/trailer height and the loaded machine configuration/position. It is the buyer's responsibility to measure all loads before leaving our auction site to ensure the load is safe for transport. All measurements should be verified by the buyer. DO NOT rely on these measurements for transportation purposes.



**Detail Information**

Location	Jacobsdal
Year	Unknown
Manufacturer	AE Adam
Model	Electronic Scale
Asset Type	Other Agri Equipment
Serial Number or VIN	
Condition	
Hours	
Km's	
Comes with	Platform
Notes	Capacity: 1500 kg x 500 g



**Operator Station**

Cab Type	
Transmission Detail: Speed	
Transmission Detail: Shift Type	
Differential Lock	
Notes	

**Engine**

Fuel Type	
Manufacturer	
Model	
Notes	

**Rear Options**

Hitch Type	
PTO	
Hydraulic Outlets	
Notes	

**Body Details**

Size	
Type	
Notes	

**Drive Train**

Notes	
-------	--

**Weights**

Front Wheel Weights	
Back Wheel Weights	
Front Nose Weights	
Notes	

**Undercarriage/Suspension**

Tyre Manufacturer	
Front Tyre Size	
Rear Tyre Size	
Notes	

**Accessories**

Other	
Extensions	

**Functionality Tests**

Start	
Drives Forward	
Drives Backwards	
Brake Pedal Functions	

Functional Test Notes

**Supporting Documents**

Certificate of Registration	
Vehicle Licence Certificate	
Service Record	
Other	



**General**

The Detailed Equipment Information is limited in scope, and BKB Auctioneers has not inspected any aspects or components of the equipment other than those expressly set forth herein. Unless expressly stated, we make no representations or warranties, express or implied, concerning the equipment or its components, including without limitation any representations or warranties concerning functionality, conformity or compliance with any safety standard or requirement of any applicable authority or regulatory body, fitness for any particular purpose, or merchantability. You are strongly advised to perform your own detailed inspection of the equipment prior to

**Functions**

The Equipment is not tested under load or operated in all available gears. We make no representation or warranty that equipment is operating in accordance with manufacturers' specifications. No inspection has been performed with respect to any functionality aspect other than those expressly included herein. Only select photos have been provided for individual undercarriage components, and may not be indicative of the condition of the entire undercarriage as a whole.

**Dimensions**

Measurements are given as an estimate only. Actual loaded dimensions may vary based on truck/trailer height and the loaded machine configuration/position. It is the buyer's responsibility to measure all loads before leaving our auction site to ensure the load is safe for transport. All measurements should be verified by the buyer. DO NOT rely on these measurements for transportation purposes.



Scan me #49



Detail Information

Location	Jacobsdal
Year	Unknown
Manufacturer	Custom Build
Model	Cattle Trough / Voerbak
Asset Type	Livestock Handling Equipment
Serial Number or VIN	
Condition	3 - Fair
Hours	
Km's	
Comes with	
Notes	



LOT 50 Bees Voerbak / Trough | BKB Digital Auctions

Operator Station

Cab Type	Double
Transmission Detail: Speed	
Transmission Detail: Shift Type	
Differential Lock	
Notes	

Engine

Fuel Type	
Manufacturer	
Model	
Notes	

Rear Options

Hitch Type	
PTO	
Hydraulic Outlets	
Notes	

Body Details

Size	
Type	
Notes	

Drive Train

Notes	
-------	--

Weights

Front Wheel Weights	
Back Wheel Weights	
Front Nose Weights	
Notes	

Undercarriage/Suspension

Tyre Manufacturer	
Front Tyre Size	
Rear Tyre Size	
Notes	

Accessories

Other	
Extensions	

Functionality Tests

Start	
Drives Forward	
Drives Backwards	
Brake Pedal Functions	

Functional Test Notes	
-----------------------	--

Supporting Documents

Certificate of Registration	
Vehicle Licence Certificate	
Service Record	
Other	

General

The Detailed Equipment Information is limited in scope, and BKB Auctioneers has not inspected any aspects or components of the equipment other than those expressly set forth herein. Unless expressly stated, we make no representations or warranties, express or implied, concerning the equipment or its components, including without limitation any representations or warranties concerning functionality, conformity or compliance with any safety standard or requirement of any applicable authority or regulatory body, fitness for any particular purpose, or merchantability. You are strongly advised to perform your own detailed inspection of the equipment prior to

Functions

The Equipment is not tested under load or operated in all available gears. We make no representation or warranty that equipment is operating in accordance with manufacturers' specifications. No inspection has been performed with respect to any functionality aspect other than those expressly included herein. Only select photos have been provided for individual undercarriage components, and may not be indicative of the condition of the entire undercarriage as a whole.

Dimensions

Measurements are given as an estimate only. Actual loaded dimensions may vary based on truck/trailer height and the loaded machine configuration/position. It is the buyer's responsibility to measure all loads before leaving our auction site to ensure the load is safe for transport. All measurements should be verified by the buyer. DO NOT rely on these measurements for transportation purposes.



Detail Information

Location	Jacobsdal
Year	Unknown
Manufacturer	Custom Build
Model	Cattle Trough / Voerbak
Asset Type	Livestock Handling Equipment
Serial Number or VIN	
Condition	3 - Fair
Hours	
Km's	
Comes with	
Notes	



Operator Station

Cab Type	
Transmission Detail: Speed	
Transmission Detail: Shift Type	
Differential Lock	
Notes	

Engine

Fuel Type	
Manufacturer	
Model	
Notes	

Rear Options

Hitch Type	
PTO	
Hydraulic Outlets	
Notes	

Body Details

Size	
Type	
Notes	

Drive Train

Notes	
-------	--

Weights

Front Wheel Weights	
Back Wheel Weights	
Front Nose Weights	
Notes	

Undercarriage/Suspension

Tyre Manufacturer	
Front Tyre Size	
Rear Tyre Size	
Notes	

Accessories

Other	
Extensions	

Functionality Tests

Start	
Drives Forward	
Drives Backwards	
Brake Pedal Functions	

Supporting Documents

Certificate of Registration	
Vehicle Licence Certificate	
Service Record	
Other	

Functional Test Notes

General

The Detailed Equipment Information is limited in scope, and BKB Auctioneers has not inspected any aspects or components of the equipment other than those expressly set forth herein. Unless expressly stated, we make no representations or warranties, express or implied, concerning the equipment or its components, including without limitation any representations or warranties concerning functionality, conformity or compliance with any safety standard or requirement of any applicable authority or regulatory body, fitness for any particular purpose, or merchantability. You are strongly advised to perform your own detailed inspection of the equipment prior to Functions

The Equipment is not tested under load or operated in all available gears. We make no representation or warranty that equipment is operating in accordance with manufacturers' specifications. No inspection has been performed with respect to any functionality aspect other than those expressly included herein. Only select photos have been provided for individual undercarriage components, and may not be indicative of the condition of the entire undercarriage as a whole.

Dimensions

Measurements are given as an estimate only. Actual loaded dimensions may vary based on truck/trailer height and the loaded machine configuration/position. It is the buyer's responsibility to measure all loads before leaving our auction site to ensure the load is safe for transport. All measurements should be verified by the buyer. DO NOT rely on these measurements for transportation purposes.



Scan me #51



**Detail Information**

Location	Jacobsdal
Year	Unknown
Manufacturer	Petit
Model	Grain Cleaner
Asset Type	Grain Handling
Serial Number or VIN	
Condition	5 - Very Good
Hours	
Km's	
Comes with	
Notes	



**Operator Station**

Cab Type	
Transmission Detail: Speed	
Transmission Detail: Shift Type	
Differential Lock	
Notes	

**Engine**

Fuel Type	
Manufacturer	
Model	
Notes	

**Rear Options**

Hitch Type	
PTO	
Hydraulic Outlets	
Notes	

**Body Details**

Size	
Type	
Notes	

**Drive Train**

Notes	
-------	--

**Weights**

Front Wheel Weights	
Back Wheel Weights	
Front Nose Weights	
Notes	

**Undercarriage/Suspension**

Tyre Manufacturer	
Front Tyre Size	
Rear Tyre Size	
Notes	

**Accessories**

Other	
Extensions	

**Functionality Tests**

Start	
Drives Forward	
Drives Backwards	
Brake Pedal Functions	

Functional Test Notes

**Supporting Documents**

Certificate of Registration	
Vehicle Licence Certificate	
Service Record	
Other	

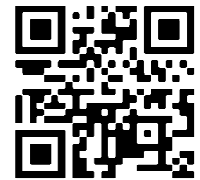
**General**

The Detailed Equipment Information is limited in scope, and BKB Auctioneers has not inspected any aspects or components of the equipment other than those expressly set forth herein. Unless expressly stated, we make no representations or warranties, express or implied, concerning the equipment or its components, including without limitation any representations or warranties concerning functionality, conformity or compliance with any safety standard or requirement of any applicable authority or regulatory body, fitness for any particular purpose, or merchantability. You are strongly advised to perform your own detailed inspection of the equipment prior to **Functions**

The Equipment is not tested under load or operated in all available gears. We make no representation or warranty that equipment is operating in accordance with manufacturers' specifications. No inspection has been performed with respect to any functionality aspect other than those expressly included herein. Only select photos have been provided for individual undercarriage components, and may not be indicative of the condition of the entire undercarriage as a whole.

**Dimensions**

Measurements are given as an estimate only. Actual loaded dimensions may vary based on truck/trailer height and the loaded machine configuration/position. It is the buyer's responsibility to measure all loads before leaving our auction site to ensure the load is safe for transport. All measurements should be verified by the buyer. DO NOT rely on these measurements for transportation purposes.



Scan me #53

**Detail Information**

Location	Jacobsdal
Year	Unknown
Manufacturer	Lifan
Model	200cc Motorcycle
Asset Type	Transportation
Serial Number or VIN	
Condition	5 - Very Good
Hours	
Km's	709
Comes with	
Notes	



LOT 54 | Lifan 200 Motorbike | BKB Digital Auctions

**Operator Station**

Cab Type	
Transmission Detail: Speed	
Transmission Detail: Shift Type	
Differential Lock	
Notes	



LOT 54 | Lifan 200 Motorbike | BKB Digital Auctions

**Engine**

Fuel Type	
Manufacturer	
Model	
Notes	

**Rear Options**

Hitch Type	
PTO	
Hydraulic Outlets	
Notes	

**Body Details**

Size	
Type	
Notes	

**Drive Train**

Notes	
-------	--

**Weights**

Front Wheel Weights	
Back Wheel Weights	
Front Nose Weights	
Notes	



LOT 54 | Lifan 200 Motorbike | BKB Digital Auctions

**Undercarriage/Suspension**

Tyre Manufacturer	
Front Tyre Size	
Rear Tyre Size	
Notes	

**Accessories**

Other	
Extensions	

**Functionality Tests**

Start	
Drives Forward	
Drives Backwards	
Brake Pedal Functions	

**Supporting Documents**

Certificate of Registration	
Vehicle Licence Certificate	
Service Record	
Other	

Functional Test Notes

**General**

The Detailed Equipment Information is limited in scope, and BKB Auctioneers has not inspected any aspects or components of the equipment other than those expressly set forth herein. Unless expressly stated, we make no representations or warranties, express or implied, concerning the equipment or its components, including without limitation any representations or warranties concerning functionality, conformity or compliance with any safety standard or requirement of any applicable authority or regulatory body, fitness for any particular purpose, or merchantability. You are strongly advised to perform your own detailed inspection of the equipment prior to

**Functions**

The Equipment is not tested under load or operated in all available gears. We make no representation or warranty that equipment is operating in accordance with manufacturers' specifications. No inspection has been performed with respect to any functionality aspect other than those expressly included herein. Only select photos have been provided for individual undercarriage components, and may not be indicative of the condition of the entire undercarriage as a whole.

**Dimensions**

Measurements are given as an estimate only. Actual loaded dimensions may vary based on truck/trailer height and the loaded machine configuration/position. It is the buyer's responsibility to measure all loads before leaving our auction site to ensure the load is safe for transport. All measurements should be verified by the buyer. DO NOT rely on these measurements for transportation purposes.



Scan me #54

**Detail Information**

Location	Jacobsdal
Year	Unknown
Manufacturer	Custom Build
Model	Steel Water Troughs
Asset Type	Other Agri Equipment
Serial Number or VIN	
Condition	
Hours	
Km's	
Comes with	
Notes	



LOT 55 | Staal Waterkrippe | BKB Digital Auctions

**Operator Station**

Cab Type	
Transmission Detail: Speed	
Transmission Detail: Shift Type	
Differential Lock	
Notes	

**Engine**

Fuel Type	
Manufacturer	
Model	
Notes	

**Rear Options**

Hitch Type	
PTO	
Hydraulic Outlets	
Notes	



LOT 55 | Staal Waterkrippe | BKB Digital Auctions

**Body Details**

Size	
Type	
Notes	

**Drive Train**

Notes	
-------	--

**Weights**

Front Wheel Weights	
Back Wheel Weights	
Front Nose Weights	
Notes	

**Undercarriage/Suspension**

Tyre Manufacturer	
Front Tyre Size	
Rear Tyre Size	
Notes	

**Accessories**

Other Extensions	
------------------	--

**Functionality Tests**

Start	
Drives Forward	
Drives Backwards	
Brake Pedal Functions	
Functional Test Notes	

**Supporting Documents**

Certificate of Registration	
Vehicle Licence Certificate	
Service Record	
Other	

**General**

The Detailed Equipment Information is limited in scope, and BKB Auctioneers has not inspected any aspects or components of the equipment other than those expressly set forth herein. Unless expressly stated, we make no representations or warranties, express or implied, concerning the equipment or its components, including without limitation any representations or warranties concerning functionality, conformity or compliance with any safety standard or requirement of any applicable authority or regulatory body, fitness for any particular purpose, or merchantability. You are strongly advised to perform your own detailed inspection of the equipment prior to Functions

The Equipment is not tested under load or operated in all available gears. We make no representation or warranty that equipment is operating in accordance with manufacturers' specifications. No inspection has been performed with respect to any functionality aspect other than those expressly included herein. Only select photos have been provided for individual undercarriage components, and may not be indicative of the condition of the entire undercarriage as a whole.

**Dimensions**

Measurements are given as an estimate only. Actual loaded dimensions may vary based on truck/trailer height and the loaded machine configuration/position. It is the buyer's responsibility to measure all loads before leaving our auction site to ensure the load is safe for transport. All measurements should be verified by the buyer. DO NOT rely on these measurements for transportation purposes.





**Detail Information**

Location	Jacobsdal
Year	Unknown
Manufacturer	Custom Build
Model	Steal Feed Troughs
Asset Type	Transportation
Serial Number or VIN	
Condition	
Hours	
Km's	
Comes with	
Notes	



**Operator Station**

Cab Type	
Transmission Detail: Speed	
Transmission Detail: Shift Type	
Differential Lock	
Notes	



**Engine**

Fuel Type	
Manufacturer	
Model	
Notes	

**Rear Options**

Hitch Type	
PTO	
Hydraulic Outlets	
Notes	

**Body Details**

Size	
Type	
Notes	

**Drive Train**

Notes	
-------	--

**Weights**

Front Wheel Weights	
Back Wheel Weights	
Front Nose Weights	
Notes	

**Undercarriage/Suspension**

Tyre Manufacturer	
Front Tyre Size	
Rear Tyre Size	
Notes	



**Accessories**

Other	
Extensions	

**Functionality Tests**

Start	
Drives Forward	
Drives Backwards	
Brake Pedal Functions	

**Supporting Documents**

Certificate of Registration	
Vehicle Licence Certificate	
Service Record	
Other	

Functional Test Notes

**General**

The Detailed Equipment Information is limited in scope, and BKB Auctioneers has not inspected any aspects or components of the equipment other than those expressly set forth herein. Unless expressly stated, we make no representations or warranties, express or implied, concerning the equipment or its components, including without limitation any representations or warranties concerning functionality, conformity or compliance with any safety standard or requirement of any applicable authority or regulatory body, fitness for any particular purpose, or merchantability. You are strongly advised to perform your own detailed inspection of the equipment prior to

**Functions**

The Equipment is not tested under load or operated in all available gears. We make no representation or warranty that equipment is operating in accordance with manufacturers' specifications. No inspection has been performed with respect to any functionality aspect other than those expressly included herein. Only select photos have been provided for individual undercarriage components, and may not be indicative of the condition of the entire undercarriage as a whole.

**Dimensions**

Measurements are given as an estimate only. Actual loaded dimensions may vary based on truck/trailer height and the loaded machine configuration/position. It is the buyer's responsibility to measure all loads before leaving our auction site to ensure the load is safe for transport. All measurements should be verified by the buyer. DO NOT rely on these measurements for transportation purposes.



Scan me #56

Detail Information

Location	Jacobsdal
Year	Unknown
Manufacturer	Custom Build
Model	Steal Gates
Asset Type	Transportation
Serial Number or VIN	
Condition	
Hours	
Km's	
Comes with	
Notes	



Operator Station

Cab Type	
Transmission Detail: Speed	
Transmission Detail: Shift Type	
Differential Lock	
Notes	

Engine

Fuel Type	
Manufacturer	
Model	
Notes	

Rear Options

Hitch Type	
PTO	
Hydraulic Outlets	
Notes	



Body Details

Size	
Type	
Notes	

Drive Train

Notes	
-------	--

Weights

Front Wheel Weights	
Back Wheel Weights	
Front Nose Weights	
Notes	

Undercarriage/Suspension

Tyre Manufacturer	
Front Tyre Size	
Rear Tyre Size	
Notes	

Accessories

Other	
Extensions	

Functionality Tests

Start	
Drives Forward	
Drives Backwards	
Brake Pedal Functions	

Functional Test Notes

Supporting Documents

Certificate of Registration	
Vehicle Licence Certificate	
Service Record	
Other	

General

The Detailed Equipment Information is limited in scope, and BKB Auctioneers has not inspected any aspects or components of the equipment other than those expressly set forth herein. Unless expressly stated, we make no representations or warranties, express or implied, concerning the equipment or its components, including without limitation any representations or warranties concerning functionality, conformity or compliance with any safety standard or requirement of any applicable authority or regulatory body, fitness for any particular purpose, or merchantability. You are strongly advised to perform your own detailed inspection of the equipment prior to

Functions

The Equipment is not tested under load or operated in all available gears. We make no representation or warranty that equipment is operating in accordance with manufacturers' specifications. No inspection has been performed with respect to any functionality aspect other than those expressly included herein. Only select photos have been provided for individual undercarriage components, and may not be indicative of the condition of the entire undercarriage as a whole.

Dimensions

Measurements are given as an estimate only. Actual loaded dimensions may vary based on truck/trailer height and the loaded machine configuration/position. It is the buyer's responsibility to measure all loads before leaving our auction site to ensure the load is safe for transport. All measurements should be verified by the buyer. DO NOT rely on these measurements for transportation purposes.



**Detail Information**

Location	Jacobsdal
Year	Unknown
Manufacturer	Custom Build
Model	Rubber Trough / Voerbak
Asset Type	Transportation
Serial Number or VIN	
Condition	
Hours	
Km's	
Comes with	
Notes	



**Operator Station**

Cab Type	
Transmission Detail: Speed	
Transmission Detail: Shift Type	
Differential Lock	
Notes	

**Engine**

Fuel Type	
Manufacturer	
Model	
Notes	

**Rear Options**

Hitch Type	
PTO	
Hydraulic Outlets	
Notes	

**Body Details**

Size	
Type	
Notes	

**Drive Train**

Notes	
-------	--

**Weights**

Front Wheel Weights	
Back Wheel Weights	
Front Nose Weights	
Notes	

**Undercarriage/Suspension**

Tyre Manufacturer	
Front Tyre Size	
Rear Tyre Size	
Notes	

**Accessories**

Other	
Extensions	

**Functionality Tests**

Start	
Drives Forward	
Drives Backwards	
Brake Pedal Functions	

Functional Test Notes	
-----------------------	--

**Supporting Documents**

Certificate of Registration	
Vehicle Licence Certificate	
Service Record	
Other	

**General**

The Detailed Equipment Information is limited in scope, and BKB Auctioneers has not inspected any aspects or components of the equipment other than those expressly set forth herein. Unless expressly stated, we make no representations or warranties, express or implied, concerning the equipment or its components, including without limitation any representations or warranties concerning functionality, conformity or compliance with any safety standard or requirement of any applicable authority or regulatory body, fitness for any particular purpose, or merchantability. You are strongly advised to perform your own detailed inspection of the equipment prior to

**Functions**

The Equipment is not tested under load or operated in all available gears. We make no representation or warranty that equipment is operating in accordance with manufacturers' specifications. No inspection has been performed with respect to any functionality aspect other than those expressly included herein. Only select photos have been provided for individual undercarriage components, and may not be indicative of the condition of the entire undercarriage as a whole.

**Dimensions**

Measurements are given as an estimate only. Actual loaded dimensions may vary based on truck/trailer height and the loaded machine configuration/position. It is the buyer's responsibility to measure all loads before leaving our auction site to ensure the load is safe for transport. All measurements should be verified by the buyer. DO NOT rely on these measurements for transportation purposes.





**Detail Information**

Location	Jacobsdal
Year	Unknown
Manufacturer	VM Systems / Agip
Model	2 Cylinder Lister engine
Asset Type	Transportation
Serial Number or VIN	86A02782
Condition	3 - Fair
Hours	
Km's	
Comes with	
Notes	3000 RPM Engine Type: RA294



LOT 59 | 2 Cylinder Lister Engine | BKB Digital Auctions

**Operator Station**

Cab Type	
Transmission Detail: Speed	
Transmission Detail: Shift Type	
Differential Lock	
Notes	

**Engine**

Fuel Type	
Manufacturer	
Model	
Notes	

**Rear Options**

Hitch Type	
PTO	
Hydraulic Outlets	
Notes	



LOT 59 | 2 Cylinder Lister Engine | BKB Digital Auctions

**Body Details**

Size	
Type	
Notes	

**Drive Train**

Notes	
-------	--

**Weights**

Front Wheel Weights	
Back Wheel Weights	
Front Nose Weights	
Notes	

**Undercarriage/Suspension**

Tyre Manufacturer	
Front Tyre Size	
Rear Tyre Size	
Notes	

**Accessories**

Other	
Extensions	

**Functionality Tests**

Start	
Drives Forward	
Drives Backwards	
Brake Pedal Functions	
Functional Test Notes	

**Supporting Documents**

Certificate of Registration	
Vehicle Licence Certificate	
Service Record	
Other	



LOT 59 | 2 Cylinder Lister Engine | BKB Digital Auctions

**General**

The Detailed Equipment Information is limited in scope, and BKB Auctioneers has not inspected any aspects or components of the equipment other than those expressly set forth herein. Unless expressly stated, we make no representations or warranties, express or implied, concerning the equipment or its components, including without limitation any representations or warranties concerning functionality, conformity or compliance with any safety standard or requirement of any applicable authority or regulatory body, fitness for any particular purpose, or merchantability. You are strongly advised to perform your own detailed inspection of the equipment prior to **Functions**

The equipment is not tested under load or operated in all available gears. We make no representation or warranty that equipment is operating in accordance with manufacturers' specifications. No inspection has been performed with respect to any functionality aspect other than those expressly included herein. Only select photos have been provided for individual undercarriage components, and may not be indicative of the condition of the entire undercarriage as a whole.

**Dimensions**

Measurements are given as an estimate only. Actual loaded dimensions may vary based on truck/trailer height and the loaded machine configuration/position. It is the buyer's responsibility to measure all loads before leaving our auction site to ensure the load is safe for transport. All measurements should be verified by the buyer. DO NOT rely on these measurements for transportation purposes.



**Detail Information**

Location	Jacobsdal
Year	1989
Manufacturer	Massey Ferguson
Model	240
Asset Type	Tractor
Serial Number or VIN	
Condition	
Hours	698
Km's	
Comes with	
Notes	Engine fully refurbished



LOT 63 Massey Ferguson 240 Tractor BKB Digital Auctions

**Operator Station**

Cab Type	
Transmission Detail: Speed	
Transmission Detail: Shift Type	
Differential Lock	
Notes	

**Engine**

Fuel Type	
Manufacturer	
Model	
Notes	



LOT 63 Massey Ferguson 240 Tractor BKB Digital Auctions

LOT 63 Massey Ferguson 240 Tractor BKB Digital Auctions

**Rear Options**

Hitch Type	
PTO	
Hydraulic Outlets	
Notes	



LOT 63 Massey Ferguson 240 Tractor BKB Digital Auctions

LOT 63 Massey Ferguson 240 Tractor BKB Digital Auctions

**Body Details**

Size	
Type	
Notes	

**Drive Train**

Notes	
-------	--

**Weights**

Front Wheel Weights	
Back Wheel Weights	
Front Nose Weights	
Notes	



LOT 63 Massey Ferguson 240 Tractor BKB Digital Auctions

**Undercarriage/Suspension**

Tyre Manufacturer	
Front Tyre Size	
Rear Tyre Size	
Notes	

**Accessories**

Other	
Extensions	

**Functionality Tests**

Start	
Drives Forward	
Drives Backwards	
Brake Pedal Functions	
Functional Test Notes	

**Supporting Documents**

Certificate of Registration	
Vehicle Licence Certificate	
Service Record	
Other	

**General**

The Detailed Equipment Information is limited in scope, and BKB Auctioneers has not inspected any aspects or components of the equipment other than those expressly set forth herein. Unless expressly stated, we make no representations or warranties, express or implied, concerning the equipment or its components, including without limitation any representations or warranties concerning functionality, conformity or compliance with any safety standard or requirement of any applicable authority or regulatory body, fitness for any particular purpose, or merchantability. You are strongly advised to perform your own detailed inspection of the equipment prior to

**Functions**  
The Equipment is not tested under load or operated in all available gears. We make no representation or warranty that equipment is operating in accordance with manufacturers' specifications. No inspection has been performed with respect to any functionality aspect other than those expressly included herein. Only select photos have been provided for individual undercarriage components, and may not be indicative of the condition of the entire undercarriage as a whole.

**Dimensions**

Measurements are given as an estimate only. Actual loaded dimensions may vary based on truck/trailer height and the loaded machine configuration/position. It is the buyer's responsibility to measure all loads before leaving our auction site to ensure the load is safe for transport. All measurements should be verified by the buyer. DO NOT rely on these measurements for transportation purposes.



**RULES OF BKB DIGITAL AUCTIONS,**  
**TERMS AND CONDITIONS FOR ONLINE AUCTION PLATFORMS**

These rules of auctions is applicable to all digital auctions held under the control of either BKB Limited, registration number 1998/012435/06 with business These terms and conditions apply to all on line bidding at auction sales conducted.

**1. Applicable Law**

- 1.1 The auction will be governed by the Laws of the Republic of South Africa
- 1.2 The rules of this auction complies with section 45 of the Consumer Protection Act 68 of 2008 (CPA) and Section 43(1) of the Electronic Communications and Transactions Act 25 of 2002. (ECTA). For more information go to <http://www.legalrights.co.za/wp-content/uploads/2017/03/CONSUMER-PROTECTION-ACT-NO.-68-OF-2008.pdf> or [https://www.gov.za/sites/default/files/gcis\\_document/201409/a25-02.pdf](https://www.gov.za/sites/default/files/gcis_document/201409/a25-02.pdf)
- 1.3 Section 44(1) of the ECTA affording purchasers a cooling off period does not apply to online auctions.
- 1.4 All persons, when registering as a bidder must, in doing so, comply with Chapter 1 of the Financial Intelligence Centre Act (FICA)
- 1.5 The Auctioneer is hereby appointed by the Purchaser and Seller to act for and on behalf of the Purchaser and Seller as agent in accordance with Section 54 of the Value-Added Tax Act, 1991, in respect of all tax invoices, credit and/or debit notes in respect of all livestock, game and/or goods offered at the auction or any costs of transport and insurances premiums paid for on behalf of the Purchaser and Seller.

**2. Bidder Registration and pre-inspection of goods and/or livestock**

- 2.1. Any person who wishes to bid on the auction must register as a bidder online and in doing so comply with Chapter 1 of FICA. For more information on the requirements set out in FICA go to [https://www.fic.gov.za/Documents/FIC%20Act%20with%202017%20amendments%20\(1\)%20\(1\).pdf](https://www.fic.gov.za/Documents/FIC%20Act%20with%202017%20amendments%20(1)%20(1).pdf)
- 2.2. The online auction service is only available to legal and natural persons who can enter into legally binding contract under the laws of South Africa. Without derogating from the generality thereof, the auction services are not available to minors.
- 2.3. Any person registering as a bidder online is deemed to be the principle contracting party and no person will be allowed to register as an agent of a third party unless with the consent of the Auctioneer.
- 2.4. By registering online as a bidder, the bidder consents to the collection and use of personal information by the Auctioneer for the purposes of creating the registration, and participation in the online auction.
- 2.5. In the event that the Auctioneer consents to an agent registering on behalf of a principle then in that event such a person together with his principal must both register online prior to the auction and provide all necessary information as required in Chapter 1 of the regulations issued in terms of FICA 2001 with regard to proof of the principle's identity.
- 2.6. Where the bidder is a company the person completing the online registration must be duly authorised by resolution of the company to register as a purchaser and shall upload a certified copy of the resolution. (For purposes of this rule any reference to a company will include any reference to juristic person including partnerships, trusts or incorporated entities).
- 2.7. Once registered bidders must keep their account details confidential and must not permit third parties to use or access their account as purchasers will remain liable for all bids entered via their account online.
- 2.8. The final auction catalogue will be available online at least 24hrs before the commencement date and time of the auction.
- 2.9. Bidders who wish to inspect the various lots which will be presented at the auction, may inspect such lots online or at the seller's premises at a time and date specified on the Auctioneer website.
- 2.10. All livestock, game and goods are sold "voetstoots" and the purchasers do not enjoy the protection of Section 55 and 56 of the Consumer Protection Act.
- 2.11. Any information provided regarding the quality, breeding, age, date of insemination, condition, reproductive status or any information regarding health, production or mass or any other aspect of the livestock and/or game, is provided by the seller and any misrepresentation by the seller is without the cooperation or knowledge of the Auctioneer. Any right of recourse as a result of such misrepresentation shall be against the seller.

**3. Bidding Procedure**

- 3.1. The auction shall take place at the date and time as advertised or published and will not be postponed or delayed to enable any member or group of the public to partake in the auction.
- 3.2. The auction is not an absolute auction but subject to reserved prices settled by the sellers and as pointed out by the Auctioneer prior to the sale of the said asset or lot.
- 3.3. Should the Auctioneer become aware of any fault on advertising material or any other publication or amendment to these Rules of Auction, the Auctioneer will prior to the auction point out and when necessary amend such mistakes in the advertisement or publication.
- 3.4. Any bid made does not include VAT which, where applicable, will be added to the bidding price for which a VAT invoice will be issued.
- 3.5. During a sale for which the bidder has registered, the bidder can bid for a lot by clicking on the bid button.
- 3.6. The current bid will be displayed on the bidder's screen during the sale.
- 3.7. Until the fall of the hammer as contemplated in section 45(3) of CPA, any bid may be retracted or declined by the Auctioneer if not compliant with the CPA or the regulations issued in terms thereof.
- 3.8. The bidder acknowledge that he/she are bidding at a live auction and agree that each bid entered (unless withdrawn before the fall of the hammer) is binding even if submitted in error. The bidder accepts full responsibility for every bid submitted through his/her online bidding account.
- 3.9. Each lot is regarded as a separate sale transaction.
- 3.10. Each lot or animal will be presented for sale at the auctioned on a Rand per Kilogram basis and bidders will enter bids reflecting prices per kilogram
- 3.11. The sale by auction is complete at the fall of the hammer or any other practice through which the Auctioneer recognizes the highest bidder as the purchaser.
- 3.12. In the event of the highest bid being tied, the earliest bid received or recognised wins.
- 3.13. The Auctioneer reserves the right to reject a registration on line, may withdraw permission for the use of the online auction service for whatsoever reason before or during the sale.

**4. Payment arrangements**

- 4.1. The final weight in kilograms of each lot or animal (as the case may be) will be established at the time the purchaser collects and take delivery thereof (the delivery weight).
- 4.2. Upon delivery and establishment of the delivery weight, the Auctioneer will provide an invoice to the purchaser reflecting the final purchase price of the specific lot or animal calculated on the successful bid price per kilogram times the delivery weight.
- 4.3. All sales are for cash and purchase price is payable by electronic funds transfer (EFT) immediately to the Auctioneer on acceptance of the bid unless the purchaser has an approved credit facility with the Auctioneer. Any payment made in cash is further subject to cash or any other handling fees. Should the Purchaser however fail to make payment within 7 days from date of delivery, BKB will be entitled to add interest calculated at the current bank prime rate plus 5% to the capital amount outstanding. The interest will be calculated monthly and capitalised.
- 4.4. Should the purchaser not pay the purchase price immediately and has failed to make arrangements for payment with the Auctioneer, then the Auctioneer can/will cancel the sale and treat the assets or lots as unsold lots which may again be presented on the auction for sale or be sold out of hand by means of liaison services, depending on the seller's mandate to the auctioneer.



4.5. In the event that Purchaser has made necessary finance arrangements with BKB, the Purchaser hereby authorises BKB to pay the purchase price or costs of transport, insurance and any other agreed cost, minus BKB's commissions, on behalf of the Purchaser to the Seller and other service providers, in which event the said payment by BKB on behalf of the Purchaser will be deemed to be monies lent and advanced, the terms and conditions thereof being agreed with the Purchaser in a separate credit agreement or sale agreement. All payments made by BKB to the Seller on behalf of the Purchaser in terms of this clause will be made after the lapse of 5 (Five) working days from date of delivery of the asset to the Purchaser. Any payment made by BKB to the Seller prior to the lapse of the 5 (Five) working day period is made at the sole discretion of BKB and not an enforceable indulgence.

4.6. In the event of payments made on behalf of the purchaser by BKB as contemplated in clause 6.5 above, the purchaser acknowledges herewith being indebted to BKB for the invoiced amount.

#### **5. Ownership and risk in the sold goods.**

5.1. Ownership in the lot or assets will remain that of the seller until the purchase price has been paid in full to the seller.

5.2. Risk in the lot or assets passes to the purchaser (the highest bidder) at the time of the Auctioneer notifies the purchaser of the acceptance of his/her bid

5.3. For as long as any amount is owing to BKB by the Purchaser, the Purchaser may not, where the assets are the subject of security of the Purchaser's credit facility with BKB, relinquish possession of the said asset, nor may he cede the asset or any of its rights and obligations in terms of this agreement to a third party or otherwise encumber, sell or dispossess the said asset or allow it to become the subject of any right of retention, hypothec, pledge or any encumbrance, whatever the cause thereof may be. BKB may be entitled to cede its rights and obligations without affecting its rights of recourse for any monies still due to it.

5.4. In the event of the Seller already being indebted to BKB or any of its affiliates at the time of this auction, the Seller hereby irrevocably authorises BKB to set off the purchase price due to the Seller by BKB (minus BKB's commission) against the amounts due by the Seller to BKB.

5.5. Where BKB, in terms of a credit agreement, lent and advanced monies to the Purchaser for payment of the purchase price of any asset or payment of any transport costs or insurance premiums, no defence of whatsoever nature which the Purchaser may raise against the Seller or the transport contractor or the insurance company may be raised against BKB and the Purchaser shall still be obligated to pay all amounts owing, together with further interest and costs thereon raised in terms of the credit agreement or sale agreement, to be BKB. The conditions of this clause do not interfere with the rights, entitlements or remedies the Purchaser may have against the Seller, transport contractor or insurance company.

5.6. Neither the Purchaser, nor the Seller, shall be entitled to apply set-off or to retain any monies owing arising from any claim they may have against each other or BKB with regards to any amount owing in terms hereof.

#### **6. Removal and Risk**

6.1. Each lot shall immediately after the date of notification by the Auctioneers to the purchaser of acceptance of his/her bid deemed to be delivered to the purchaser at the address of the seller at which time the risk will pass to the purchaser who will at his own risk and cost remove the lots or assets from the Sellers premises or auction terrain.

6.2. Removal of any assets or lots however will not be allowed by the Auctioneer until payment of the purchase price by the purchaser or acceptable arrangements for payment thereof have been made by the purchaser with the Auctioneer.

6.3. BKB will not accept liability for any loss or damage to the goods or livestock as a result of the purchasers failure to make adequate and timeous arrangements for the removal of the livestock or goods.

6.4. Under no circumstances will BKB be held liable for any loss or damage of any cause whatsoever albeit direct or indirect damages suffered by anyone if the livestock and/or game at the auction premises have to be placed under quarantine as a result of the presence of a livestock and/or game disease present. In such event BKB will have the right to cancel the auction as well as any already complete sales and no party will be entitled or have a right of recourse against BKB.

6.5. Any party requiring permits, removal certificate, documentation of identification or any other statutory prescribed document will solely be responsible for obtaining same. Any instructions to an auctioneer with regards to the loading, transporting, choice of transport contractors, insurance or choice of insurers will be executed at the sole risk of the person acquiring such services and the Auctioneer will not be held responsible for any losses whether direct or indirect which may be suffered as a result of giving affect to the instructions by the Auctioneer.

6.6. Any agreement entered into by the Auctioneer with a transport company or insurer is done so in its representative capacity of the seller or purchaser. All transport costs or insurance premiums are therefore payable to the Auctioneer in cash except if acceptable alternative arrangements were made with the Auctioneer

#### **7. Limitation of Liability**

7.1. Notwithstanding the section 43 of ECTA, under no circumstances will BKB, its affiliates or subsidiaries, or any shareholders of BKB and its subsidiaries, officers, directors, employees or agents be liable for any loss or damage caused by:

7.1.1. The bidder's reliance on information obtained through either the content or the services, or

7.1.2. by being exposed to information contained on the site, or

7.1.3. the defamatory, offensive or illegal conduct of other users or third parties or

7.1.4. the use or inability to use the website or the services or content provided from or through the website or

7.1.5. any disruption in the internet connection resulting in the bidder being disconnected from the online auction for whatsoever reason or

7.1.6. the failure to record a bid as a result of being disconnected or the online platform going offline during the auction process.

7.2. Neither BKB or any third party content provider nor their respective agents shall be liable for any direct indirect, incidental or consequential damages arising out of the use or inability to use or access the online auction site.

7.3. BKB makes no representation or warranties, implied or otherwise that the auction service will be uninterrupted and 100% error free. It is every users sole responsibility that the online auction site and services provided by BKB through this website will meet the user's individual requirements and be compatible with the user's hardware and software.

#### **8. General terms and conditions**

8.1. The Auctioneer will only be obliged to give reasons of the auction if such reasons are other than the voluntary sale of goods by its owners.

8.2. The bidders' roll and vendor roll will be available for registered purchasers for inspection with written notice and good reason during the normal office hours at the business premises of the Auctioneer.

8.3. Both the seller and the purchaser consent to the jurisdiction of the Magistrate's Court as contemplated in Section 45 of Act 32 of 1944 having regard to any action which the Auctioneer may institute against the purchaser or seller irrespective of the cause of action. Notwithstanding the aforesaid the Auctioneer will have the sole and absolute discretion to institute action in any High Court with appropriate jurisdiction.

8.4. Any legal costs that BKB may have or will incur as a result of the non-compliance of the Purchaser and/or Seller in terms of its or their obligations herein, shall be recoverable by BKB, together with collection commissions from the Purchaser and/or Seller on a scale as between attorney and own client.

8.5. No variation, amendment, novation or addition to these terms and conditions will have the effect of BKB renouncing any of its rights in terms hereof, unless it is reduced to writing and signed by BKB.

8.6. No relaxation or indulgence by the Auctioneer must be interpreted as a waiver of any of the Auctioneer's rights in terms hereof. Such relaxation or indulgence must also not be interpreted as a novation hereof.

8.7. Should any condition be unlawful or become retrospectively unlawful, that unlawful condition shall be deemed to be amended to the extent and in the manner as is necessary to make it lawful or should such amendment be impossible, the unlawful conditions shall be deemed devisable from the remainder of the conditions and pro no