

# KENMOOR BOERDERY

## FARM EQUIPMENT DIGITAL AUCTION CATALOGUE



The Trusted Home of Agriculture  
Die Betroubare Tuiste van Landbou

**Date: Wed, 25 November 2020**  
**Auction starts at: 11h00**

Auctioneer: Appie Maritz

Auction Coordinator: Dieter Schutte

Auction Enquiries: Gerhard Louw

Equipment Enquiries: Francious van Wyk

Contact: (082) 825 3895

Contact: (079) 500 7525

Contact: (082) 771 5824

Contact: (083) 440 1544



[REGISTER TO BID](#)

[VIEW AUCTION  
AS GUEST](#)

Please call or WhatsApp the following number if you  
require technical support on the Digital Auction Platform:

**+27 (0)82 957 8827**



The Trusted Home of Agriculture  
Die Betroubare Tuiste van Landbou

## EXECUTIVE CATALOGUE SUMMARY

<u>Lot Nr.</u>	<u>Asset Type</u>	<u>Year</u>	<u>Manufacturer</u>	<u>Model</u>	<u>Buyer No</u>	<u>Price</u>
Lot 1	Tractor Attachments	Unknown	Custom Build	KUNSMIS VARKIE		
Lot 2	Tractor Attachments	Unknown	Custom Build	KUNSMIS VARKIE		
Lot 3	Landscaping Equipment	Unknown	Custom Build	4 SKAAR PLOEG		
Lot 4	Hay & Forage Equipment		Agrico	ONKRUIDSPUIT		
Lot 5	Tractor Attachments	2002	ATASA ABORD	WINGERDSPUIT		
Lot 6	Hay & Forage Equipment	2016	TIFONE	STORM P1500 Boordspuit		
Lot 7	Tractor Attachments		BOLAND	SWAAILEMSNYER		
Lot 8	Tractor Attachments		ERDVARK	DIS		
Lot 9	Trailer			DIESELKAR		
Lot 10	Tractor	2007	John Deere	6420		
Lot 11	Tractor	2014	John Deere	5303		
Lot 12	Transportation	2019	FAW	15.180 FL TRUCK		
Lot 13	Transportation	2005	MAN	TGA 18.410 TRUCK		
Lot 14	Trailer	2017	GRW	12.2M PLAKBAK WA		
Lot 15			Henred Fruehauf	FLATBED		
Lot 16	Harvester	1999	PELENC	106 CV TURBO GRAPE HARVERSTER		
Lot 17	Transportation	2016	Toyota	SRX D-4D SINGLE CAB VEHICLE		
Lot 18	Hay & Forage Equipment	2014	LELY	SPLENDIMO PC 370 RS		
Lot 19	Hay & Forage Equipment	2017	MASSEY FERGUSON	1840 BALER		
Lot 20	Hay & Forage Equipment	2018	SOUTHTRADE	COMPACT 600 KUNSMISSTROOIER		
Lot 21	Hay & Forage Equipment	Unknown	Custom build	BAALKARRETJIE		
Lot 22	Hay & Forage Equipment	Unknown	Custom build	BAALKARRETJIE		
Lot 23	Landscaping Equipment	Unknown	Custom build	GRONDBREKER		
Lot 24	Hay & Forage Equipment	Unknown	KUHN	KRAGHARK		
Lot 25	Landscaping Equipment	Unknown	Custom Build	WINGERD KONTRA SNY-EG (DIS)		
Lot 26	Seeding and Tillage Equipment	Unknown	BRILLIAN	FYNZAAD PLANTER		
Lot 27	Hay & Forage Equipment	Unknown	ROVIC	MK 2 KUNSMISSTROOIER		
Lot 28	Landscaping Equipment	Unknown	JOUBERT IMPLEMENTE	GRONDBREKER		
Lot 29	Tractor Attachments	Unknown	Custom Build	ONKRUID SPUITKAR		
Lot 30	Tractor Attachments	Unknown	LEDGUARD	TRIMMER		
Lot 31	Other Agri Equipment	Unknown	Stettyn	SPILPUNT		
Lot 32	Other Agri Equipment		Stettyn	SPILPUNTspilpunt		
Lot 33	Other Agri Equipment			BESPROEINGS PYPE		
Lot 34	Other Agri Equipment			SELF STAAN SPROEIERS		
Lot 35	Other Agri Equipment		RECAM INTERNATIONAL	WATERPYPE		
Lot 36	Other Agri Equipment			MC 60 KOELKAMER		
Lot 37	Other Agri Equipment			STOEP BANKIES		
Lot 38	Other Agri Equipment			BESPROEINGS "TREE HOGS"		
Lot 39	Livestock Handling Equipment			VOERBAKKEoerbake		
Lot 40	Other Agri Equipment			GRASSNYERS		
Lot 41						
Lot 42						
Lot 43						
Lot 44						
Lot 45						
Lot 46						
Lot 47						
Lot 48						
Lot 49						
Lot 50						

Lot Nr.

1

Date

25 November 2020

**Detail Information**

Location	Worcester
Year	Unknown
Manufacturer	Custom Build
Model	KUNSMIS VARKIE
Asset Type	Tractor Attachments
Serial Number or VIN	
Condition	4 - Good
Hours	
Km's	
Comes with	
Notes	Gemonteer op waentjie, met wieletjie



**LOT 1** Fertiliser Dispenser BKB Digital Auctions

**Operator Station**

Cab Type	
Transmission Detail: Speed	
Transmission Detail: Shift Type	
Differential Lock	
Notes	

**Engine**

Fuel Type	
Manufacturer	
Model	
Notes	

**Rear Options**

Hitch Type	Balhak tipe
PTO	
Hydraulic Outlets	
Notes	



**LOT 1** Fertiliser Dispenser BKB Digital Auctions

**Body Details**

Size	
Type	
Notes	

**Drive Train**

Notes	
-------	--

**Weights**

Front Wheel Weights	
Back Wheel Weights	
Front Nose Weights	
Notes	

**Undercarriage/Suspension**

Tyre Manufacturer	DOUBLE KING LOADING INDEX
Front Tyre Size	155/80R13
Rear Tyre Size	
Notes	80% Tread



**LOT 1** Fertiliser Dispenser BKB Digital Auctions

**Accessories**

Other	
Extensions	

**Functionality Tests**

Start	
Drives Forward	
Drives Backwards	
Brake Pedal Functions	

**Supporting Documents**

Certificate of Registration	
Vehicle Licence Certificate	
Service Record	
Other	

Functional Test Notes

**General**

The Detailed Equipment Information is limited in scope, and BKB Auctioneers has not inspected any aspects or components of the equipment other than those expressly set forth herein. Unless expressly stated, we make no representations or warranties, express or implied, concerning the equipment or its components, including without limitation any representations or warranties concerning functionality, conformity or compliance with any safety standard or requirement of any applicable authority or regulatory body, fitness for any particular purpose, or merchantability. You are strongly advised to perform your own detailed inspection of the equipment prior to bidding.

**Functions**

The Equipment is not tested under load or operated in all available gears. We make no representation or warranty that equipment is operating in accordance with manufacturers' specifications. No inspection has been performed with respect to any functionality aspect other than those expressly included herein. Only select photos have been provided for individual undercarriage components, and may not be indicative of the condition of the entire undercarriage as a whole.

**Dimensions**

Measurements are given as an estimate only. Actual loaded dimensions may vary based on truck/trailer height and the loaded machine configuration/position. It is the buyer's responsibility to measure all loads before leaving our auction site to ensure the load is safe for transport. All measurements should be verified by the buyer. DO NOT rely on these measurements for transportation purposes.





Lot Nr.

2

Date

25 November 2020

Detail Information

Location	Worcester
Year	Unknown
Manufacturer	Custom Build
Model	KUNSMIS VARKIE
Asset Type	Tractor Attachments
Serial Number or VIN	
Condition	4 - Good
Hours	
Km's	
Comes with	
Notes	Gemonteer op waentjie, met wioletjie



**LOT 2** Fertiliser Dispenser BKB Digital Auctions

Operator Station

Cab Type	
Transmission Detail: Speed	
Transmission Detail: Shift Type	
Differential Lock	
Notes	

Engine

Fuel Type	
Manufacturer	
Model	
Notes	

Rear Options

Hitch Type	Balhak tipe
PTO	
Hydraulic Outlets	
Notes	

Body Details

Size	
Type	
Notes	



**LOT 2** Fertiliser Dispenser BKB Digital Auctions

Drive Train

Notes	
-------	--

Weights

Front Wheel Weights	
Back Wheel Weights	
Front Nose Weights	
Notes	

Undercarriage/Suspension

Tyre Manufacturer	DOUBLE KING LOADING INDEX
Front Tyre Size	155/80R13
Rear Tyre Size	
Notes	80% Tread

Accessories

Other	
Extensions	



**LOT 2** Fertiliser Dispenser BKB Digital Auctions

Functionality Tests

Start	
Drives Forward	
Drives Backwards	
Brake Pedal Functions	

Supporting Documents

Certificate of Registration	
Vehicle Licence Certificate	
Service Record	
Other	

Functional Test Notes

\_\_\_\_\_

General

The Detailed Equipment Information is limited in scope, and BKB Auctioneers has not inspected any aspects or components of the equipment other than those expressly set forth herein. Unless expressly stated, we make no representations or warranties, express or implied, concerning the equipment or its components, including without limitation any representations or warranties concerning functionality, conformity or compliance with any safety standard or requirement of any applicable authority or regulatory body, fitness for any particular purpose, or merchantability. You are strongly advised to perform your own detailed inspection of the equipment prior to bidding.

Functions

The Equipment is not tested under load or operated in all available gears. We make no representation or warranty that equipment is operating in accordance with manufacturers' specifications. No inspection has been performed with respect to any functionality aspect other than those expressly included herein. Only select photos have been provided for individual undercarriage components, and may not be indicative of the condition of the entire undercarriage as a whole.

Dimensions

Measurements are given as an estimate only. Actual loaded dimensions may vary based on truck/trailer height and the loaded machine configuration/position. It is the buyer's responsibility to measure all loads before leaving our auction site to ensure the load is safe for transport. All measurements should be verified by the buyer. DO NOT rely on these measurements for transportation purposes.



Scan me #2



Lot Nr.

3

Date

25 November 2020

**Detail Information**

Location	Worcester
Year	Unknown
Manufacturer	Custom Build
Model	4 SKAAR PLOEG
Asset Type	Landscaping Equipment
Serial Number or VIN	
Condition	3 - Fair
Hours	
Km's	
Comes with	
Notes	



	<b>LOT 3</b>	4-Prong Plow	BKB Digital Auctions	
--	--------------	--------------	----------------------	--

**Operator Station**

Cab Type	
Transmission Detail: Speed	
Transmission Detail: Shift Type	
Differential Lock	
Notes	

**Engine**

Fuel Type	
Manufacturer	
Model	
Notes	

**Rear Options**

Hitch Type	
PTO	
Hydraulic Outlets	
Notes	

**Body Details**

Size	
Type	
Notes	

**Drive Train**

Notes	
-------	--

**Weights**

Front Wheel Weights	
Back Wheel Weights	
Front Nose Weights	
Notes	

**Undercarriage/Suspension**

Tyre Manufacturer	
Front Tyre Size	
Rear Tyre Size	
Notes	

**Accessories**

Other	
Extensions	

**Functionality Tests**

Start	
Drives Forward	
Drives Backwards	
Brake Pedal Functions	

**Supporting Documents**

Certificate of Registration	
Vehicle Licence Certificate	
Service Record	
Other	

Functional Test Notes

**General**

The Detailed Equipment Information is limited in scope, and BKB Auctioneers has not inspected any aspects or components of the equipment other than those expressly set forth herein. Unless expressly stated, we make no representations or warranties, express or implied, concerning the equipment or its components, including without limitation any representations or warranties concerning functionality, conformity or compliance with any safety standard or requirement of any applicable authority or regulatory body, fitness for any particular purpose, or merchantability. You are strongly advised to perform your own detailed inspection of the equipment prior to bidding.

**Functions**

The Equipment is not tested under load or operated in all available gears. We make no representation or warranty that equipment is operating in accordance with manufacturers' specifications. No inspection has been performed with respect to any functionality aspect other than those expressly included herein. Only select photos have been provided for individual undercarriage components, and may not be indicative of the condition of the entire undercarriage as a whole.

**Dimensions**

Measurements are given as an estimate only. Actual loaded dimensions may vary based on truck/trailer height and the loaded machine configuration/position. It is the buyer's responsibility to measure all loads before leaving our auction site to ensure the load is safe for transport. All measurements should be verified by the buyer. DO NOT rely on these measurements for transportation purposes.



Lot Nr.

4

Date

25 November 2020

**Detail Information**

Location	Worcester
Year	
Manufacturer	Agrico
Model	ONKRUIDSPUIT
Asset Type	Hay & Forage Equipment
Serial Number or VIN	
Condition	3 - Fair
Hours	
Km's	
Comes with	
Notes	



**LOT 4** Agrico Sprayer BKB Digital Auctions 

**Operator Station**

Cab Type	
Transmission Detail: Speed	
Transmission Detail: Shift Type	
Differential Lock	
Notes	


**Engine**

Fuel Type	
Manufacturer	
Model	
Notes	


**Rear Options**

Hitch Type	
PTO	
Hydraulic Outlets	
Notes	



**LOT 4** Agrico Sprayer BKB Digital Auctions 



**LOT 4** Agrico Sprayer BKB Digital Auctions 

**Body Details**

Size	
Type	
Notes	



**LOT 4** Agrico Sprayer BKB Digital Auctions 

**Drive Train**

Notes	
-------	--

**Weights**

Front Wheel Weights	
Back Wheel Weights	
Front Nose Weights	
Notes	

**Undercarriage/Suspension**

Tyre Manufacturer	
Front Tyre Size	
Rear Tyre Size	
Notes	



**LOT 4** Agrico Sprayer BKB Digital Auctions 

**Accessories**

Other	
Extensions	

**Functionality Tests**

Start	
Drives Forward	
Drives Backwards	
Brake Pedal Functions	

**Supporting Documents**

Certificate of Registration	
Vehicle Licence Certificate	
Service Record	
Other	

Functional Test Notes

**General**

The Detailed Equipment Information is limited in scope, and BKB Auctioneers has not inspected any aspects or components of the equipment other than those expressly set forth herein. Unless expressly stated, we make no representations or warranties, express or implied, concerning the equipment or its components, including without limitation any representations or warranties concerning functionality, conformity or compliance with any safety standard or requirement of any applicable authority or regulatory body, fitness for any particular purpose, or merchantability. You are strongly advised to perform your own detailed inspection of the equipment prior to bidding.

**Functions**

The Equipment is not tested under load or operated in all available gears. We make no representation or warranty that equipment is operating in accordance with manufacturers' specifications. No inspection has been performed with respect to any functionality aspect other than those expressly included herein. Only select photos have been provided for individual undercarriage components, and may not be indicative of the condition of the entire undercarriage as a whole.

**Dimensions**

Measurements are given as an estimate only. Actual loaded dimensions may vary based on truck/trailer height and the loaded machine configuration/position. It is the buyer's responsibility to measure all loads before leaving our auction site to ensure the load is safe for transport. All measurements should be verified by the buyer. DO NOT rely on these measurements for transportation purposes.





Lot Nr.

5

Date

25 November 2020

Detail Information

Location	Worcester
Year	2002
Manufacturer	ATASA ABORD
Model	WINGERDSPUIT
Asset Type	Tractor Attachments
Serial Number or VIN	
Condition	4 - Good
Hours	
Km's	
Comes with	
Notes	



LOT 5

Atasa Sprayer

BKB Digital Auctions



Operator Station

Cab Type	
Transmission Detail: Speed	
Transmission Detail: Shift Type	
Differential Lock	
Notes	

Engine

Fuel Type	
Manufacturer	
Model	
Notes	

Rear Options

Hitch Type	
PTO	Yes
Hydraulic Outlets	
Notes	

Body Details

Size	1 000 liter met 800 mm gat
Type	
Notes	



LOT 5

Atasa Sprayer

BKB Digital Auctions



Drive Train

Notes	
-------	--

Weights

Front Wheel Weights	
Back Wheel Weights	
Front Nose Weights	
Notes	

Undercarriage/Suspension

Tyre Manufacturer	BKT IMPLEMENT AW 702
Front Tyre Size	10.0/80-12
Rear Tyre Size	
Notes	80% Tread



LOT 5

Atasa Sprayer

BKB Digital Auctions



Accessories

Other	
Extensions	

Functionality Tests

Start	
Drives Forward	
Drives Backwards	
Brake Pedal Functions	

Supporting Documents

Certificate of Registration	
Vehicle Licence Certificate	
Service Record	
Other	

Functional Test Notes

General

The Detailed Equipment Information is limited in scope, and BKB Auctioneers has not inspected any aspects or components of the equipment other than those expressly set forth herein. Unless expressly stated, we make no representations or warranties, express or implied, concerning the equipment or its components, including without limitation any representations or warranties concerning functionality, conformity or compliance with any safety standard or requirement of any applicable authority or regulatory body, fitness for any particular purpose, or merchantability. You are strongly advised to perform your own detailed inspection of the equipment prior to bidding.

Functions

The Equipment is not tested under load or operated in all available gears. We make no representation or warranty that equipment is operating in accordance with manufacturers' specifications. No inspection has been performed with respect to any functionality aspect other than those expressly included herein. Only select photos have been provided for individual undercarriage components, and may not be indicative of the condition of the entire undercarriage as a whole.

Dimensions

Measurements are given as an estimate only. Actual loaded dimensions may vary based on truck/trailer height and the loaded machine configuration/position. It is the buyer's responsibility to measure all loads before leaving our auction site to ensure the load is safe for transport. All measurements should be verified by the buyer. DO NOT rely on these measurements for transportation purposes.



Lot Nr.

6

Date

25 November 2020

Detail Information

Location	Worcester
Year	2016
Manufacturer	TIFONE
Model	STORM P1500 Boordspuit
Asset Type	Hay & Forage Equipment
Serial Number or VIN	
Condition	5 - Very Good
Hours	
Km's	
Comes with	
Notes	



**LOT 6** Tifone Storm P1500 Orchard Sprayer BKB Digital Auctions 

Operator Station

Cab Type	
Transmission Detail: Speed	
Transmission Detail: Shift Type	
Differential Lock	
Notes	

Engine

Fuel Type	
Manufacturer	
Model	
Notes	

Rear Options

Hitch Type	
PTO	
Hydraulic Outlets	
Notes	

Body Details

Size	1 500 liter
Type	
Notes	

Drive Train

Notes	
-------	--

Weights

Front Wheel Weights	
Back Wheel Weights	
Front Nose Weights	
Notes	


Undercarriage/Suspension

Tyre Manufacturer	Tianli F302
Front Tyre Size	10.0/75-15.3
Rear Tyre Size	
Notes	80% Tread


Accessories

Other	
Extensions	



**LOT 6** Tifone Storm P1500 Orchard Sprayer BKB Digital Auctions 




**LOT 6** Tifone Storm P1500 Orchard Sprayer BKB Digital Auctions 



**LOT 6** Tifone Storm P1500 Orchard Sprayer BKB Digital Auctions 



**LOT 6** Tifone Storm P1500 Orchard Sprayer BKB Digital Auctions 

Functionality Tests

Start	
Drives Forward	
Drives Backwards	
Brake Pedal Functions	

Functional Test Notes

Supporting Documents

Certificate of Registration	
Vehicle Licence Certificate	
Service Record	
Other	

General

The Detailed Equipment Information is limited in scope, and BKB Auctioneers has not inspected any aspects or components of the equipment other than those expressly set forth herein. Unless expressly stated, we make no representations or warranties, express or implied, concerning the equipment or its components, including without limitation any representations or warranties concerning functionality, conformity or compliance with any safety standard or requirement of any applicable authority or regulatory body, fitness for any particular purpose, or merchantability. You are strongly advised to perform your own detailed inspection of the equipment prior to bidding.

Functions

The Equipment is not tested under load or operated in all available gears. We make no representation or warranty that equipment is operating in accordance with manufacturers' specifications. No inspection has been performed with respect to any functionality aspect other than those expressly included herein. Only select photos have been provided for individual undercarriage components, and may not be indicative of the condition of the entire undercarriage as a whole.

Dimensions

Measurements are given as an estimate only. Actual loaded dimensions may vary based on truck/trailer height and the loaded machine configuration/position. It is the buyer's responsibility to measure all loads before leaving our auction site to ensure the load is safe for transport. All measurements should be verified by the buyer. DO NOT rely on these measurements for transportation purposes.





Lot Nr.

7

Date

25 November 2020

**Detail Information**

Location	Worcester
Year	
Manufacturer	BOLAND
Model	SWAAILMSNYER
Asset Type	Tractor Attachments
Serial Number or VIN	
Condition	3 - Fair
Hours	
Km's	
Comes with	
Notes	Ratkas is oorgedoen



**Operator Station**

Cab Type	
Transmission Detail: Speed	
Transmission Detail: Shift Type	
Differential Lock	
Notes	

**Engine**

Fuel Type	
Manufacturer	
Model	
Notes	

**Rear Options**

Hitch Type	
PTO	
Hydraulic Outlets	
Notes	

**Body Details**

Size	
Type	
Notes	

**Drive Train**

Notes	
-------	--

**Weights**

Front Wheel Weights	
Back Wheel Weights	
Front Nose Weights	
Notes	

**Undercarriage/Suspension**

Tyre Manufacturer	
Front Tyre Size	
Rear Tyre Size	
Notes	

**Accessories**

Other	
Extensions	

**Functionality Tests**

Start	
Drives Forward	
Drives Backwards	
Brake Pedal Functions	

**Supporting Documents**

Certificate of Registration	
Vehicle Licence Certificate	
Service Record	
Other	

Functional Test Notes

**General**

The Detailed Equipment Information is limited in scope, and BKB Auctioneers has not inspected any aspects or components of the equipment other than those expressly set forth herein. Unless expressly stated, we make no representations or warranties, express or implied, concerning the equipment or its components, including without limitation any representations or warranties concerning functionality, conformity or compliance with any safety standard or requirement of any applicable authority or regulatory body, fitness for any particular purpose, or merchantability. You are strongly advised to perform your own detailed inspection of the equipment prior to bidding.

**Functions**

The Equipment is not tested under load or operated in all available gears. We make no representation or warranty that equipment is operating in accordance with manufacturers' specifications. No inspection has been performed with respect to any functionality aspect other than those expressly included herein. Only select photos have been provided for individual undercarriage components, and may not be indicative of the condition of the entire undercarriage as a whole.

**Dimensions**

Measurements are given as an estimate only. Actual loaded dimensions may vary based on truck/trailer height and the loaded machine configuration/position. It is the buyer's responsibility to measure all loads before leaving our auction site to ensure the load is safe for transport. All measurements should be verified by the buyer. DO NOT rely on these measurements for transportation purposes.




**LOT 7** Boland Swivel Cutter
 


Lot Nr.

8

Date

25 November 2020

**Detail Information**

Location	Worcester
Year	
Manufacturer	ERDVARK
Model	DIS
Asset Type	Tractor Attachments
Serial Number or VIN	
Condition	4 - Good
Hours	
Km's	
Comes with	
Notes	3 Punt



LOT 8

Erdvark Disc

BKB Digital Auctions



**Operator Station**

Cab Type	
Transmission Detail: Speed	
Transmission Detail: Shift Type	
Differential Lock	
Notes	

**Engine**

Fuel Type	
Manufacturer	
Model	
Notes	

**Rear Options**

Hitch Type	
PTO	
Hydraulic Outlets	
Notes	

**Body Details**

Size	
Type	
Notes	



LOT 8

Erdvark Disc

BKB Digital Auctions



**Drive Train**

Notes	
-------	--

**Weights**

Front Wheel Weights	
Back Wheel Weights	
Front Nose Weights	
Notes	

**Undercarriage/Suspension**

Tyre Manufacturer	
Front Tyre Size	
Rear Tyre Size	
Notes	

**Accessories**

Other	
Extensions	

**Functionality Tests**

Start	
Drives Forward	
Drives Backwards	
Brake Pedal Functions	

**Supporting Documents**

Certificate of Registration	
Vehicle Licence Certificate	
Service Record	
Other	

Functional Test Notes

\_\_\_\_\_

**General**

The Detailed Equipment Information is limited in scope, and BKB Auctioneers has not inspected any aspects or components of the equipment other than those expressly set forth herein. Unless expressly stated, we make no representations or warranties, express or implied, concerning the equipment or its components, including without limitation any representations or warranties concerning functionality, conformity or compliance with any safety standard or requirement of any applicable authority or regulatory body, fitness for any particular purpose, or merchantability. You are strongly advised to perform your own detailed inspection of the equipment prior to bidding.

**Functions**

The Equipment is not tested under load or operated in all available gears. We make no representation or warranty that equipment is operating in accordance with manufacturers' specifications. No inspection has been performed with respect to any functionality aspect other than those expressly included herein. Only select photos have been provided for individual undercarriage components, and may not be indicative of the condition of the entire undercarriage as a whole.

**Dimensions**

Measurements are given as an estimate only. Actual loaded dimensions may vary based on truck/trailer height and the loaded machine configuration/position. It is the buyer's responsibility to measure all loads before leaving our auction site to ensure the load is safe for transport. All measurements should be verified by the buyer. DO NOT rely on these measurements for transportation purposes.





Lot Nr.

9

Date

25 November 2020

**Detail Information**

Location	Worcester
Year	
Manufacturer	
Model	DIESELKAR
Asset Type	Trailer
Serial Number or VIN	
Condition	4 - Good
Hours	
Km's	
Comes with	OPTREK HANDBRIEK; DIESEL ODOMETER;
Notes	



LOT 9 Diesel Trailer BKB Digital Auctions BKB The Trusted Name of Agriculture

**Operator Station**

Cab Type	
Transmission Detail: Speed	
Transmission Detail: Shift Type	
Differential Lock	
Notes	

**Engine**

Fuel Type	
Manufacturer	
Model	
Notes	



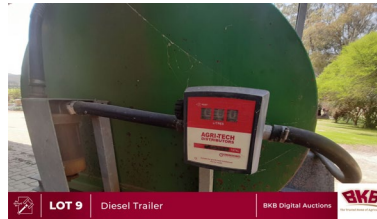
LOT 9 Diesel Trailer BKB Digital Auctions BKB

**Rear Options**

Hitch Type	
PTO	
Hydraulic Outlets	
Notes	

**Body Details**

Size	
Type	
Notes	



LOT 9 Diesel Trailer BKB Digital Auctions BKB

**Drive Train**

Notes	
-------	--

**Weights**

Front Wheel Weights	
Back Wheel Weights	
Front Nose Weights	
Notes	



LOT 9 Diesel Trailer BKB Digital Auctions BKB

**Undercarriage/Suspension**

Tyre Manufacturer	
Front Tyre Size	
Rear Tyre Size	
Notes	

**Accessories**

Other	
Extensions	

**Functionality Tests**

Start	
Drives Forward	
Drives Backwards	
Brake Pedal Functions	

**Supporting Documents**

Certificate of Registration	
Vehicle Licence Certificate	YES
Service Record	
Other	

Functional Test Notes

**General**

The Detailed Equipment Information is limited in scope, and BKB Auctioneers has not inspected any aspects or components of the equipment other than those expressly set forth herein. Unless expressly stated, we make no representations or warranties, express or implied, concerning the equipment or its components, including without limitation any representations or warranties concerning functionality, conformity or compliance with any safety standard or requirement of any applicable authority or regulatory body, fitness for any particular purpose, or merchantability. You are strongly advised to perform your own detailed inspection of the equipment prior to bidding.

**Functions**

The Equipment is not tested under load or operated in all available gears. We make no representation or warranty that equipment is operating in accordance with manufacturers' specifications. No inspection has been performed with respect to any functionality aspect other than those expressly included herein. Only select photos have been provided for individual undercarriage components, and may not be indicative of the condition of the entire undercarriage as a whole.

**Dimensions**

Measurements are given as an estimate only. Actual loaded dimensions may vary based on truck/trailer height and the loaded machine configuration/position. It is the buyer's responsibility to measure all loads before leaving our auction site to ensure the load is safe for transport. All measurements should be verified by the buyer. DO NOT rely on these measurements for transportation purposes.



Lot Nr. **10**

Date **25 November 2020**

**Detail Information**

Location	<b>Worcester</b>
Year	<b>2007</b>
Manufacturer	<b>John Deere</b>
Model	<b>6420</b>
Asset Type	<b>Tractor</b>
Serial Number or VIN	<b>AAC6420FW4L000148</b>
Condition	<b>5 - Very Good</b>
Hours	<b>8300</b>
Km's	
Comes with	
Notes	



**LOT 10** John Deere 6420 Tractor BKB Digital Auctions 

**Operator Station**

Cab Type	<b>Open</b>
Transmission Detail: Speed	<b>Semi-Automatic</b>
Transmission Detail: Shift Type	<b>#REF!</b>
Differential Lock	<b>Yes</b>
Notes	



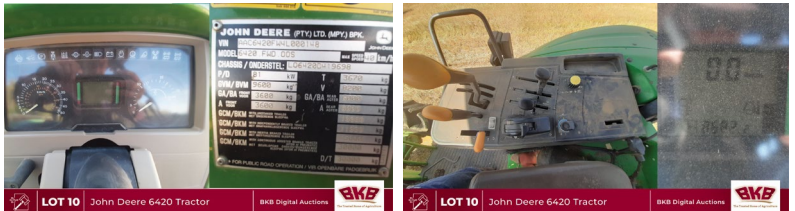
**LOT 10** John Deere 6420 Tractor BKB Digital Auctions  **LOT 10** John Deere 6420 Tractor BKB Digital Auctions 

**Engine**

Fuel Type	<b>Diesel</b>
Manufacturer	
Model	
Notes	

**Rear Options**

Hitch Type	
PTO	<b>Yes</b>
Hydraulic Outlets	<b>Yes</b>
Notes	



**LOT 10** John Deere 6420 Tractor BKB Digital Auctions  **LOT 10** John Deere 6420 Tractor BKB Digital Auctions 

**Body Details**

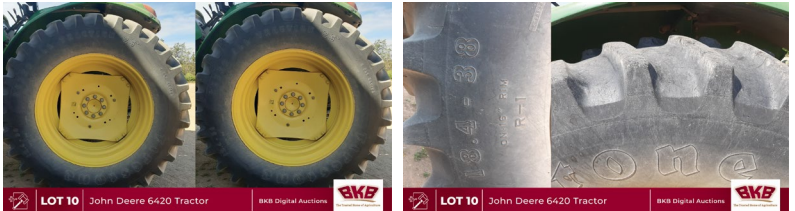
Size	
Type	
Notes	

**Drive Train**

Notes	
-------	--

**Weights**

Front Wheel Weights	<b>No</b>
Back Wheel Weights	<b>Yes</b>
Front Nose Weights	<b>Yes</b>
Notes	



**LOT 10** John Deere 6420 Tractor BKB Digital Auctions  **LOT 10** John Deere 6420 Tractor BKB Digital Auctions 

**Undercarriage/Suspension**

Tyre Manufacturer	
Front Tyre Size	<b>ATLAS LR 861 380/85R28</b>
Rear Tyre Size	<b>FIRESTONE SUPER ALL 23 18.5-38</b>
Notes	<b>75% Tread</b>

**Accessories**

Other	
Extensions	

**Functionality Tests**

Start	<b>YES</b>
Drives Forward	<b>YES</b>
Drives Backwards	<b>YES</b>
Brake Pedal Functions	<b>YES</b>

**Supporting Documents**

Certificate of Registration	
Vehicle Licence Certificate	<b>YES</b>
Service Record	<b>YES</b>
Other	

Functional Test Notes

**General**

The Detailed Equipment Information is limited in scope, and BKB Auctioneers has not inspected any aspects or components of the equipment other than those expressly set forth herein. Unless expressly stated, we make no representations or warranties, express or implied, concerning the equipment or its components, including without limitation any representations or warranties concerning functionality, conformity or compliance with any safety standard or requirement of any applicable authority or regulatory body, fitness for any particular purpose, or merchantability. You are strongly advised to perform your own detailed inspection of the equipment prior to bidding.

**Functions**

The Equipment is not tested under load or operated in all available gears. We make no representation or warranty that equipment is operating in accordance with manufacturers' specifications. No inspection has been performed with respect to any functionality aspect other than those expressly included herein. Only select photos have been provided for individual undercarriage components, and may not be indicative of the condition of the entire undercarriage as a whole.

**Dimensions**

Measurements are given as an estimate only. Actual loaded dimensions may vary based on truck/trailer height and the loaded machine configuration/position. It is the buyer's responsibility to measure all loads before leaving our auction site to ensure the load is safe for transport. All measurements should be verified by the buyer. DO NOT rely on these measurements for transportation purposes.





Lot Nr. **11**

Date **25 November 2020**

**Detail Information**

Location	<b>Worcester</b>
Year	<b>2014</b>
Manufacturer	<b>John Deere</b>
Model	<b>5303</b>
Asset Type	<b>Tractor</b>
Serial Number or VIN	<b>PY5303E000909</b>
Condition	<b>5 - Very Good</b>
Hours	<b>14 723</b>
Km's	
Comes with	<b>Rovic laaigraaf</b>
Notes	<b>4X2</b>



**Operator Station**

Cab Type	<b>Open</b>
Transmission Detail: Speed	<b>Manual Transmission</b>
Transmission Detail: Shift Type	<b>#REF!</b>
Differential Lock	<b>Yes</b>
Notes	



**Engine**

Fuel Type	<b>Diesel</b>
Manufacturer	
Model	
Notes	

**Rear Options**

Hitch Type	
PTO	<b>Yes</b>
Hydraulic Outlets	<b>Yes</b>
Notes	

**Body Details**

Size	
Type	
Notes	

**Drive Train**

Notes	
-------	--

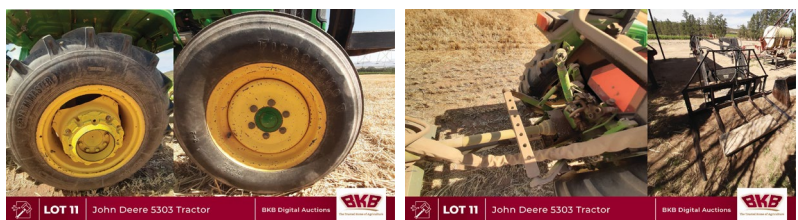
**Weights**

Front Wheel Weights	<b>No</b>
Back Wheel Weights	<b>No</b>
Front Nose Weights	<b>Yes</b>
Notes	



**Undercarriage/Suspension**

Tyre Manufacturer	
Front Tyre Size	<b>FIRESTONE - 7.50-16</b>
Rear Tyre Size	<b>FARM MASTER - 14.9-28</b>
Notes	<b>65% Tread</b>



**Accessories**

Other	
Extensions	

**Functionality Tests**

Start	<b>YES</b>
Drives Forward	<b>YES</b>
Drives Backwards	<b>YES</b>
Brake Pedal Functions	<b>YES</b>

**Supporting Documents**

Certificate of Registration	
Vehicle Licence Certificate	<b>YES</b>
Service Record	<b>YES</b>
Other	

Functional Test Notes

**General**

The Detailed Equipment Information is limited in scope, and BKB Auctioneers has not inspected any aspects or components of the equipment other than those expressly set forth herein. Unless expressly stated, we make no representations or warranties, express or implied, concerning the equipment or its components, including without limitation any representations or warranties concerning functionality, conformity or compliance with any safety standard or requirement of any applicable authority or regulatory body, fitness for any particular purpose, or merchantability. You are strongly advised to perform your own detailed inspection of the equipment prior to bidding.

**Functions**

The Equipment is not tested under load or operated in all available gears. We make no representation or warranty that equipment is operating in accordance with manufacturers' specifications. No inspection has been performed with respect to any functionality aspect other than those expressly included herein. Only select photos have been provided for individual undercarriage components, and may not be indicative of the condition of the entire undercarriage as a whole.

**Dimensions**

Measurements are given as an estimate only. Actual loaded dimensions may vary based on truck/trailer height and the loaded machine configuration/position. It is the buyer's responsibility to measure all loads before leaving our auction site to ensure the load is safe for transport. All measurements should be verified by the buyer. DO NOT rely on these measurements for transportation purposes.



Lot Nr. **12**

Date **25 November 2020**

**Detail Information**

Location	<b>Worcester</b>
Year	<b>2019</b>
Manufacturer	<b>FAW</b>
Model	<b>15.180 FL</b>
Asset Type	<b>Transportation</b>
Serial Number or VIN	
Condition	<b>5 - Very Good</b>
Hours	
Km's	<b>32000</b>
Comes with	
Notes	



**Operator Station**

Cab Type	<b>Cab</b>
Transmission Detail: Speed	
Transmission Detail: Shift Type	<b>Manual Transmission</b>
Differential Lock	
Notes	



**Engine**

Fuel Type	<b>Diesel</b>
Manufacturer	<b>CUMIN</b>
Model	
Notes	

**Rear Options**

Hitch Type	
PTO	
Hydraulic Outlets	
Notes	



**Body Details**

Size	<b>8 TON PLATBAK</b>
Type	
Notes	

**Drive Train**

Notes	
-------	--

**Weights**

Front Wheel Weights	
Back Wheel Weights	
Front Nose Weights	
Notes	



**Undercarriage/Suspension**

Tyre Manufacturer	<b>DOUBLE COIN RT500</b>
Front Tyre Size	<b>275/70 R22.5</b>
Rear Tyre Size	<b>275/70 R22.6</b>
Notes	<b>80% Tread</b>



**Accessories**

Other	
Extensions	

**Functionality Tests**

Start	<b>YES</b>
Drives Forward	<b>YES</b>
Drives Backwards	<b>YES</b>
Brake Pedal Functions	<b>YES</b>

**Supporting Documents**

Certificate of Registration	<b>YES</b>
Vehicle Licence Certificate	<b>YES</b>
Service Record	<b>YES</b>
Other	

Functional Test Notes

**General**

The Detailed Equipment Information is limited in scope, and BKB Auctioneers has not inspected any aspects or components of the equipment other than those expressly set forth herein. Unless expressly stated, we make no representations or warranties, express or implied, concerning the equipment or its components, including without limitation any representations or warranties concerning functionality, conformity or compliance with any safety standard or requirement of any applicable authority or regulatory body, fitness for any particular purpose, or merchantability. You are strongly advised to perform your own detailed inspection of the equipment prior to bidding.

**Functions**

The Equipment is not tested under load or operated in all available gears. We make no representation or warranty that equipment is operating in accordance with manufacturers' specifications. No inspection has been performed with respect to any functionality aspect other than those expressly included herein. Only select photos have been provided for individual undercarriage components, and may not be indicative of the condition of the entire undercarriage as a whole.

**Dimensions**

Measurements are given as an estimate only. Actual loaded dimensions may vary based on truck/trailer height and the loaded machine configuration/position. It is the buyer's responsibility to measure all loads before leaving our auction site to ensure the load is safe for transport. All measurements should be verified by the buyer. DO NOT rely on these measurements for transportation purposes.



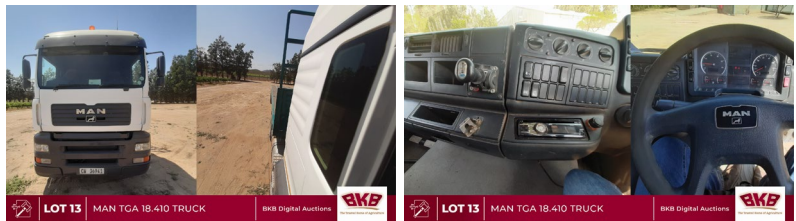


Lot Nr. **13**

Date **25 November 2020**

**Detail Information**

Location	<b>Worcester</b>
Year	<b>2005</b>
Manufacturer	<b>MAN</b>
Model	<b>TGA 18.410</b>
Asset Type	<b>Transportation</b>
Serial Number or VIN	<b>AAMH610077PX12584</b>
Condition	<b>5 - Very Good</b>
Hours	
Km's	<b>762725</b>
Comes with	
Notes	<b>HIDROLIESE PYPE</b>



**Operator Station**

Cab Type	<b>Close Cab</b>
Transmission Detail: Speed	
Transmission Detail: Shift Type	<b>Automatic transmission</b>
Differential Lock	<b>Yes</b>
Notes	

**Engine**

Fuel Type	<b>Diesel</b>
Manufacturer	
Model	
Notes	<b>Engin Nr. 5350781047B2E1</b>

**Rear Options**

Hitch Type	
PTO	
Hydraulic Outlets	
Notes	

**Body Details**

Size	
Type	
Notes	

**Drive Train**

Notes	
-------	--

**Weights**

Front Wheel Weights	
Back Wheel Weights	
Front Nose Weights	
Notes	

**Undercarriage/Suspension**

Tyre Manufacturer	
Front Tyre Size	<b>FIRESTONE 404 - 315/80R/22.5 154/150M</b>
Rear Tyre Size	<b>RHINO KINGS</b>
Notes	<b>70% Tread</b>

**Accessories**

Other	
Extensions	

**Functionality Tests**

Start	<b>YES</b>
Drives Forward	<b>YES</b>
Drives Backwards	<b>YES</b>
Brake Pedal Functions	<b>YES</b>

**Supporting Documents**

Certificate of Registration	<b>YES</b>
Vehicle Licence Certificate	<b>YES</b>
Service Record	<b>YES</b>
Other	

Functional Test Notes

**General**

The Detailed Equipment Information is limited in scope, and BKB Auctioneers has not inspected any aspects or components of the equipment other than those expressly set forth herein. Unless expressly stated, we make no representations or warranties, express or implied, concerning the equipment or its components, including without limitation any representations or warranties concerning functionality, conformity or compliance with any safety standard or requirement of any applicable authority or regulatory body, fitness for any particular purpose, or merchantability. You are strongly advised to perform your own detailed inspection of the equipment prior to bidding.

**Functions**

The Equipment is not tested under load or operated in all available gears. We make no representation or warranty that equipment is operating in accordance with manufacturers' specifications. No inspection has been performed with respect to any functionality aspect other than those expressly included herein. Only select photos have been provided for individual undercarriage components, and may not be indicative of the condition of the entire undercarriage as a whole.

**Dimensions**

Measurements are given as an estimate only. Actual loaded dimensions may vary based on truck/trailer height and the loaded machine configuration/position. It is the buyer's responsibility to measure all loads before leaving our auction site to ensure the load is safe for transport. All measurements should be verified by the buyer. DO NOT rely on these measurements for transportation purposes.



Lot Nr. **14**

Date **25 November 2020**

**Detail Information**

Location	<b>Worcester</b>
Year	<b>2017</b>
Manufacturer	<b>GRW</b>
Model	<b>12.2M PLAKBAK WA</b>
Asset Type	<b>Trailer</b>
Serial Number or VIN	
Condition	<b>5 - Very Good</b>
Hours	
Km's	
Comes with	
Notes	



**LOT 14** GRW FLATBED TRAILER BKB Digital Auctions **BKB** The Trusted Name of Agriculture

**Operator Station**

Cab Type	
Transmission Detail: Speed	
Transmission Detail: Shift Type	
Differential Lock	
Notes	

**Engine**

Fuel Type	
Manufacturer	
Model	
Notes	



**LOT 14** GRW FLATBED TRAILER BKB Digital Auctions **BKB**

**Rear Options**

Hitch Type	
PTO	
Hydraulic Outlets	<b>Yes</b>
Notes	



**LOT 14** GRW FLATBED TRAILER BKB Digital Auctions **BKB**

**Body Details**

Size	
Type	
Notes	<b>AIR SUSPENSION + AIRBAGS SUPER SINGLE; 3</b>

**Drive Train**

Notes	
-------	--

**Weights**

Front Wheel Weights	
Back Wheel Weights	
Front Nose Weights	
Notes	



**LOT 14** GRW FLATBED TRAILER BKB Digital Auctions **BKB**

**Undercarriage/Suspension**

Tyre Manufacturer	
Front Tyre Size	<b>CONTINENTAL HDR2 315/80 R22.5 156/150 L</b>
Rear Tyre Size	<b>O GREEN AG566 385/65 R22.5</b>
Notes	<b>80% Tread</b>



**LOT 14** GRW FLATBED TRAILER BKB Digital Auctions **BKB**

**Accessories**

Other	
Extensions	

**Functionality Tests**

Start	
Drives Forward	
Drives Backwards	
Brake Pedal Functions	

**Supporting Documents**

Certificate of Registration	<b>YES</b>
Vehicle Licence Certificate	<b>YES</b>
Service Record	<b>NOT APPLICABLE</b>
Other	

Functional Test Notes

**General**

The Detailed Equipment Information is limited in scope, and BKB Auctioneers has not inspected any aspects or components of the equipment other than those expressly set forth herein. Unless expressly stated, we make no representations or warranties, express or implied, concerning the equipment or its components, including without limitation any representations or warranties concerning functionality, conformity or compliance with any safety standard or requirement of any applicable authority or regulatory body, fitness for any particular purpose, or merchantability. You are strongly advised to perform your own detailed inspection of the equipment prior to bidding.

**Functions**

The Equipment is not tested under load or operated in all available gears. We make no representation or warranty that equipment is operating in accordance with manufacturers' specifications. No inspection has been performed with respect to any functionality aspect other than those expressly included herein. Only select photos have been provided for individual undercarriage components, and may not be indicative of the condition of the entire undercarriage as a whole.

**Dimensions**

Measurements are given as an estimate only. Actual loaded dimensions may vary based on truck/trailer height and the loaded machine configuration/position. It is the buyer's responsibility to measure all loads before leaving our auction site to ensure the load is safe for transport. All measurements should be verified by the buyer. DO NOT rely on these measurements for transportation purposes.





Lot Nr.

15

Date

25 November 2020

**Detail Information**

Location	Worcester
Year	
Manufacturer	Henred Fruehauf
Model	
Asset Type	
Serial Number or VIN	
Condition	5 - Very Good
Hours	
Km's	
Comes with	
Notes	Enkel-as



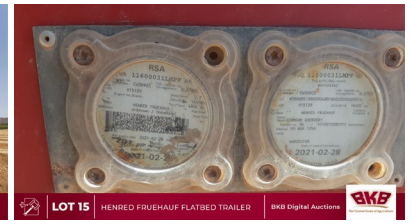
LOT 15 HENRED FRUEHAUF FLATBED TRAILER BKB Digital Auctions

**Operator Station**

Cab Type	
Transmission Detail: Speed	
Transmission Detail: Shift Type	
Differential Lock	
Notes	

**Engine**

Fuel Type	
Manufacturer	
Model	
Notes	



LOT 15 HENRED FRUEHAUF FLATBED TRAILER BKB Digital Auctions

**Rear Options**

Hitch Type	
PTO	
Hydraulic Outlets	
Notes	



LOT 15 HENRED FRUEHAUF FLATBED TRAILER BKB Digital Auctions

**Body Details**

Size	
Type	
Notes	Meganiese suspensie; enkel-as

**Drive Train**

Notes	
-------	--

**Weights**

Front Wheel Weights	
Back Wheel Weights	
Front Nose Weights	
Notes	



LOT 15 HENRED FRUEHAUF FLATBED TRAILER BKB Digital Auctions

**Undercarriage/Suspension**

Tyre Manufacturer	TRANSLOGIX & DUNLOP D325 HIGHWAY
Front Tyre Size	
Rear Tyre Size	TL 23 11.00-20
Notes	70% Tread



LOT 15 HENRED FRUEHAUF FLATBED TRAILER BKB Digital Auctions

**Accessories**

Other	
Extensions	

**Functionality Tests**

Start	
Drives Forward	
Drives Backwards	
Brake Pedal Functions	

**Supporting Documents**

Certificate of Registration	YES
Vehicle Licence Certificate	YES
Service Record	
Other	

Functional Test Notes

**General**

The Detailed Equipment Information is limited in scope, and BKB Auctioneers has not inspected any aspects or components of the equipment other than those expressly set forth herein. Unless expressly stated, we make no representations or warranties, express or implied, concerning the equipment or its components, including without limitation any representations or warranties concerning functionality, conformity or compliance with any safety standard or requirement of any applicable authority or regulatory body, fitness for any particular purpose, or merchantability. You are strongly advised to perform your own detailed inspection of the equipment prior to bidding.

**Functions**

The Equipment is not tested under load or operated in all available gears. We make no representation or warranty that equipment is operating in accordance with manufacturers' specifications. No inspection has been performed with respect to any functionality aspect other than those expressly included herein. Only select photos have been provided for individual undercarriage components, and may not be indicative of the condition of the entire undercarriage as a whole.

**Dimensions**

Measurements are given as an estimate only. Actual loaded dimensions may vary based on truck/trailer height and the loaded machine configuration/position. It is the buyer's responsibility to measure all loads before leaving our auction site to ensure the load is safe for transport. All measurements should be verified by the buyer. DO NOT rely on these measurements for transportation purposes.



Scan me #15

Lot Nr. **16**

Date **25 November 2020**

**Detail Information**

Location	<b>Worcester</b>
Year	<b>1999</b>
Manufacturer	<b>PELENC</b>
Model	<b>106 CV TURBO</b>
Asset Type	<b>Harvester</b>
Serial Number or VIN	
Condition	<b>4 - Good</b>
Hours	<b>3500</b>
Km's	
Comes with	
Notes	



**LOT 16** PELENC 3100 GRAPE HARVESTER BKB Digital Auctions **BKB** The Trusted Name of Agriculture

**Operator Station**

Cab Type	<b>Close Cab</b>
Transmission Detail: Speed	
Transmission Detail: Shift Type	<b>Automatic transmission</b>
Differential Lock	<b>Yes</b>
Notes	



**LOT 16** PELENC 3100 GRAPE HARVESTER BKB Digital Auctions **BKB**



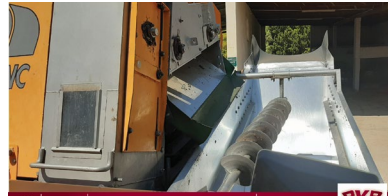
**LOT 16** PELENC 3100 GRAPE HARVESTER BKB Digital Auctions **BKB**

**Engine**

Fuel Type	<b>Diesel</b>
Manufacturer	
Model	
Notes	

**Rear Options**

Hitch Type	
PTO	
Hydraulic Outlets	
Notes	



**LOT 16** PELENC 3100 GRAPE HARVESTER BKB Digital Auctions **BKB**



**LOT 16** PELENC 3100 GRAPE HARVESTER BKB Digital Auctions **BKB**

**Body Details**

Size	
Type	
Notes	

**Drive Train**

Notes	
-------	--



**LOT 16** PELENC 3100 GRAPE HARVESTER BKB Digital Auctions **BKB**



**LOT 16** PELENC 3100 GRAPE HARVESTER BKB Digital Auctions **BKB**

**Weights**

Front Wheel Weights	
Back Wheel Weights	
Front Nose Weights	
Notes	

**Undercarriage/Suspension**

Tyre Manufacturer	<b>AGRI MAX RT765</b>
Front Tyre Size	<b>380/70R24</b>
Rear Tyre Size	<b>380/70R25</b>
Notes	<b>80% Tread</b>



**LOT 16** PELENC 3100 GRAPE HARVESTER BKB Digital Auctions **BKB**



**LOT 16** PELENC 3100 GRAPE HARVESTER BKB Digital Auctions **BKB**

**Accessories**

Other	
Extensions	

**Functionality Tests**

Start	<b>YES</b>
Drives Forward	<b>YES</b>
Drives Backwards	<b>YES</b>
Brake Pedal Functions	<b>YES</b>

**Supporting Documents**

Certificate of Registration	
Vehicle Licence Certificate	<b>YES</b>
Service Record	<b>YES</b>
Other	

Functional Test Notes

**General**

The Detailed Equipment Information is limited in scope, and BKB Auctioneers has not inspected any aspects or components of the equipment other than those expressly set forth herein. Unless expressly stated, we make no representations or warranties, express or implied, concerning the equipment or its components, including without limitation any representations or warranties concerning functionality, conformity or compliance with any safety standard or requirement of any applicable authority or regulatory body, fitness for any particular purpose, or merchantability. You are strongly advised to perform your own detailed inspection of the equipment prior to bidding.

**Functions**

The Equipment is not tested under load or operated in all available gears. We make no representation or warranty that equipment is operating in accordance with manufacturers' specifications. No inspection has been performed with respect to any functionality aspect other than those expressly included herein. Only select photos have been provided for individual undercarriage components, and may not be indicative of the condition of the entire undercarriage as a whole.

**Dimensions**

Measurements are given as an estimate only. Actual loaded dimensions may vary based on truck/trailer height and the loaded machine configuration/position. It is the buyer's responsibility to measure all loads before leaving our auction site to ensure the load is safe for transport. All measurements should be verified by the buyer. DO NOT rely on these measurements for transportation purposes.



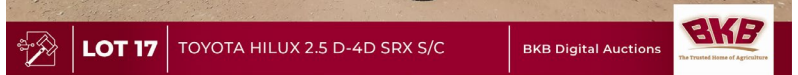


Lot Nr. **17**

Date **25 November 2020**

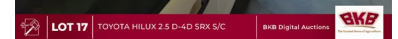
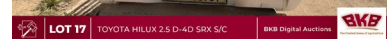
**Detail Information**

Location	<b>Worcester</b>
Year	<b>2016</b>
Manufacturer	<b>Toyota</b>
Model	<b>SRX D-4D SINGLE CAB</b>
Asset Type	<b>Transportation</b>
Serial Number or VIN	
Condition	<b>3 - Fair</b>
Hours	
Km's	<b>200000</b>
Comes with	<b>AIRCON EN FOGLIGHTS + NATKO BAKKIE</b>
Notes	



**Operator Station**

Cab Type	<b>SINGLE CAB</b>
Transmission Detail: Speed	
Transmission Detail: Shift Type	<b>Manual Transmission</b>
Differential Lock	<b>Yes</b>
Notes	

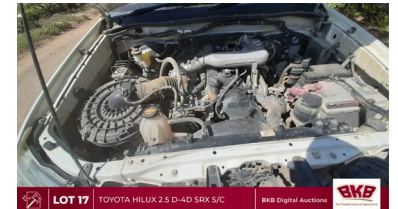


**Engine**

Fuel Type	<b>Diesel</b>
Manufacturer	
Model	
Notes	

**Rear Options**

Hitch Type	<b>Bal &amp; Hak Pen</b>
PTO	
Hydraulic Outlets	
Notes	

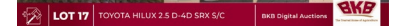
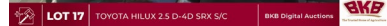


**Body Details**

Size	
Type	
Notes	

**Drive Train**

Notes	
-------	--



**Weights**

Front Wheel Weights	
Back Wheel Weights	
Front Nose Weights	
Notes	

**Undercarriage/Suspension**

Tyre Manufacturer	<b>BRIDGESTONE DUELLERS</b>
Front Tyre Size	<b>205 R16C</b>
Rear Tyre Size	<b>206 R16C</b>
Notes	<b>70% Tread</b>



**Accessories**

Other	
Extensions	

**Functionality Tests**

Start	<b>YES</b>
Drives Forward	<b>YES</b>
Drives Backwards	<b>YES</b>
Brake Pedal Functions	<b>YES</b>

**Supporting Documents**

Certificate of Registration	<b>YES</b>
Vehicle Licence Certificate	<b>YES</b>
Service Record	<b>YES</b>
Other	

Functional Test Notes

**General**

The Detailed Equipment Information is limited in scope, and BKB Auctioneers has not inspected any aspects or components of the equipment other than those expressly set forth herein. Unless expressly stated, we make no representations or warranties, express or implied, concerning the equipment or its components, including without limitation any representations or warranties concerning functionality, conformity or compliance with any safety standard or requirement of any applicable authority or regulatory body, fitness for any particular purpose, or merchantability. You are strongly advised to perform your own detailed inspection of the equipment prior to bidding.

**Functions**

The Equipment is not tested under load or operated in all available gears. We make no representation or warranty that equipment is operating in accordance with manufacturers' specifications. No inspection has been performed with respect to any functionality aspect other than those expressly included herein. Only select photos have been provided for individual undercarriage components, and may not be indicative of the condition of the entire undercarriage as a whole.

**Dimensions**

Measurements are given as an estimate only. Actual loaded dimensions may vary based on truck/trailer height and the loaded machine configuration/position. It is the buyer's responsibility to measure all loads before leaving our auction site to ensure the load is safe for transport. All measurements should be verified by the buyer. DO NOT rely on these measurements for transportation purposes.



Lot Nr. **18**

Date **25 November 2020**

**Detail Information**

Location	<b>Worcester</b>
Year	<b>2014</b>
Manufacturer	<b>LELY</b>
Model	<b>SPLENDIMO PC 370 RS</b>
Asset Type	<b>Hay &amp; Forage Equipment</b>
Serial Number or VIN	
Condition	<b>3 - Fair</b>
Hours	
Km's	
Comes with	
Notes	<b>'MOWER CONDITIONER'</b>



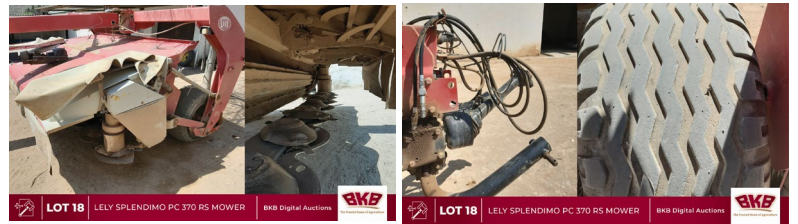
**LOT 18** LELY SLENDIMO PC 370 RS MOWER BKB Digital Auctions **BKB** The Trusted Name of Agriculture

**Operator Station**

Cab Type	
Transmission Detail: Speed	
Transmission Detail: Shift Type	
Differential Lock	
Notes	

**Engine**

Fuel Type	
Manufacturer	
Model	
Notes	



**LOT 18** LELY SLENDIMO PC 370 RS MOWER BKB Digital Auctions **BKB** **LOT 18** LELY SLENDIMO PC 370 RS MOWER BKB Digital Auctions **BKB**

**Rear Options**

Hitch Type	
PTO	<b>Yes</b>
Hydraulic Outlets	
Notes	

**Body Details**

Size	<b>3.7 M</b>
Type	
Notes	

**Drive Train**

Notes	
-------	--

**Weights**

Front Wheel Weights	
Back Wheel Weights	
Front Nose Weights	
Notes	



**LOT 18** LELY SLENDIMO PC 370 RS MOWER BKB Digital Auctions **BKB** **LOT 18** LELY SLENDIMO PC 370 RS MOWER BKB Digital Auctions **BKB**

**Undercarriage/Suspension**

Tyre Manufacturer	
Front Tyre Size	
Rear Tyre Size	
Notes	<b>65% Tread</b>

**Accessories**

Other	
Extensions	

**Functionality Tests**

Start	
Drives Forward	
Drives Backwards	
Brake Pedal Functions	

**Supporting Documents**

Certificate of Registration	
Vehicle Licence Certificate	
Service Record	
Other	

Functional Test Notes

**General**

The Detailed Equipment Information is limited in scope, and BKB Auctioneers has not inspected any aspects or components of the equipment other than those expressly set forth herein. Unless expressly stated, we make no representations or warranties, express or implied, concerning the equipment or its components, including without limitation any representations or warranties concerning functionality, conformity or compliance with any safety standard or requirement of any applicable authority or regulatory body, fitness for any particular purpose, or merchantability. You are strongly advised to perform your own detailed inspection of the equipment prior to bidding.

**Functions**

The Equipment is not tested under load or operated in all available gears. We make no representation or warranty that equipment is operating in accordance with manufacturers' specifications. No inspection has been performed with respect to any functionality aspect other than those expressly included herein. Only select photos have been provided for individual undercarriage components, and may not be indicative of the condition of the entire undercarriage as a whole.

**Dimensions**

Measurements are given as an estimate only. Actual loaded dimensions may vary based on truck/trailer height and the loaded machine configuration/position. It is the buyer's responsibility to measure all loads before leaving our auction site to ensure the load is safe for transport. All measurements should be verified by the buyer. DO NOT rely on these measurements for transportation purposes.





Lot Nr.

19

Date

25 November 2020

Detail Information

Location	Worcester
Year	2017
Manufacturer	MASSEY FERGUSON
Model	1840
Asset Type	Hay & Forage Equipment
Serial Number or VIN	5.18996E+11
Condition	4 - Good
Hours	
Km's	
Comes with	
Notes	



**LOT 19** Massey Ferguson 1840 Baler BKB Digital Auctions

Operator Station

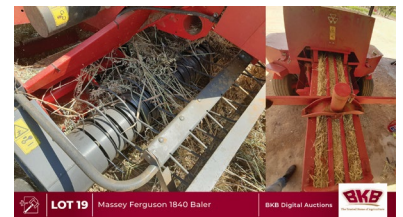
Cab Type	
Transmission Detail: Speed	
Transmission Detail: Shift Type	
Differential Lock	
Notes	

Engine

Fuel Type	
Manufacturer	
Model	
Notes	



**LOT 19** Massey Ferguson 1840 Baler BKB Digital Auctions



**LOT 19** Massey Ferguson 1840 Baler BKB Digital Auctions

Rear Options

Hitch Type	
PTO	Yes
Hydraulic Outlets	Yes
Notes	



**LOT 19** Massey Ferguson 1840 Baler BKB Digital Auctions



**LOT 19** Massey Ferguson 1840 Baler BKB Digital Auctions

Body Details

Size	
Type	
Notes	

Drive Train

Notes	
-------	--



**LOT 19** Massey Ferguson 1840 Baler BKB Digital Auctions



**LOT 19** Massey Ferguson 1840 Baler BKB Digital Auctions

Weights

Front Wheel Weights	
Back Wheel Weights	
Front Nose Weights	
Notes	

Undercarriage/Suspension

Tyre Manufacturer	CARLISLE NHS
Front Tyre Size	
Rear Tyre Size	31X13.50-15
Notes	70% Tread



**LOT 19** Massey Ferguson 1840 Baler BKB Digital Auctions

Accessories

Other	
Extensions	

Functionality Tests

Start	
Drives Forward	
Drives Backwards	
Brake Pedal Functions	

Supporting Documents

Certificate of Registration	
Vehicle Licence Certificate	
Service Record	
Other	

Functional Test Notes

General

The Detailed Equipment Information is limited in scope, and BKB Auctioneers has not inspected any aspects or components of the equipment other than those expressly set forth herein. Unless expressly stated, we make no representations or warranties, express or implied, concerning the equipment or its components, including without limitation any representations or warranties concerning functionality, conformity or compliance with any safety standard or requirement of any applicable authority or regulatory body, fitness for any particular purpose, or merchantability. You are strongly advised to perform your own detailed inspection of the equipment prior to bidding.

Functions

The Equipment is not tested under load or operated in all available gears. We make no representation or warranty that equipment is operating in accordance with manufacturers' specifications. No inspection has been performed with respect to any functionality aspect other than those expressly included herein. Only select photos have been provided for individual undercarriage components, and may not be indicative of the condition of the entire undercarriage as a whole.

Dimensions

Measurements are given as an estimate only. Actual loaded dimensions may vary based on truck/trailer height and the loaded machine configuration/position. It is the buyer's responsibility to measure all loads before leaving our auction site to ensure the load is safe for transport. All measurements should be verified by the buyer. DO NOT rely on these measurements for transportation purposes.



Lot Nr.

20

Date

25 November 2020

**Detail Information**

Location	Worcester
Year	2018
Manufacturer	SOUTHTRADE
Model	COMPACT 600 KUNSMISSTROOIER
Asset Type	Hay & Forage Equipment
Serial Number or VIN	
Condition	5 - Very Good
Hours	
Km's	
Comes with	
Notes	3 PUNT



**Operator Station**

Cab Type	
Transmission Detail: Speed	
Transmission Detail: Shift Type	
Differential Lock	
Notes	

**Engine**

Fuel Type	
Manufacturer	
Model	
Notes	

**Rear Options**

Hitch Type	
PTO	Yes
Hydraulic Outlets	Yes
Notes	

**Body Details**

Size	
Type	
Notes	

**Drive Train**

Notes	
-------	--

**Weights**

Front Wheel Weights	
Back Wheel Weights	
Front Nose Weights	
Notes	

**Undercarriage/Suspension**

Tyre Manufacturer	
Front Tyre Size	
Rear Tyre Size	
Notes	

**Accessories**

Other	
Extensions	

**Functionality Tests**

Start	
Drives Forward	
Drives Backwards	
Brake Pedal Functions	

**Supporting Documents**

Certificate of Registration	
Vehicle Licence Certificate	
Service Record	
Other	

Functional Test Notes

**General**

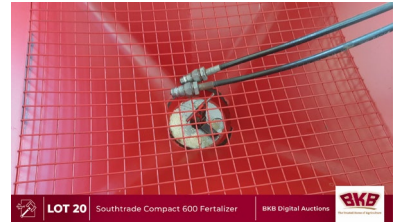
The Detailed Equipment Information is limited in scope, and BKB Auctioneers has not inspected any aspects or components of the equipment other than those expressly set forth herein. Unless expressly stated, we make no representations or warranties, express or implied, concerning the equipment or its components, including without limitation any representations or warranties concerning functionality, conformity or compliance with any safety standard or requirement of any applicable authority or regulatory body, fitness for any particular purpose, or merchantability. You are strongly advised to perform your own detailed inspection of the equipment prior to bidding.

**Functions**

The Equipment is not tested under load or operated in all available gears. We make no representation or warranty that equipment is operating in accordance with manufacturers' specifications. No inspection has been performed with respect to any functionality aspect other than those expressly included herein. Only select photos have been provided for individual undercarriage components, and may not be indicative of the condition of the entire undercarriage as a whole.

**Dimensions**

Measurements are given as an estimate only. Actual loaded dimensions may vary based on truck/trailer height and the loaded machine configuration/position. It is the buyer's responsibility to measure all loads before leaving our auction site to ensure the load is safe for transport. All measurements should be verified by the buyer. DO NOT rely on these measurements for transportation purposes.



Scan me #20



Lot Nr.

21

Date

25 November 2020

Detail Information

Location	Worcester
Year	Unknown
Manufacturer	Custom build
Model	BAALKARRETJIE
Asset Type	Hay & Forage Equipment
Serial Number or VIN	
Condition	4 - Good
Hours	
Km's	
Comes with	
Notes	



 **LOT 21** Bale Trailer BKB Digital Auctions 

Operator Station

Cab Type	
Transmission Detail: Speed	
Transmission Detail: Shift Type	
Differential Lock	
Notes	

Engine

Fuel Type	
Manufacturer	
Model	
Notes	

Rear Options

Hitch Type	
PTO	
Hydraulic Outlets	
Notes	

Body Details

Size	
Type	
Notes	



 **LOT 21** Bale Trailer BKB Digital Auctions 

Drive Train

Notes	
-------	--

Weights

Front Wheel Weights	
Back Wheel Weights	
Front Nose Weights	
Notes	

Undercarriage/Suspension

Tyre Manufacturer	SAVA EFFECTA +
Front Tyre Size	
Rear Tyre Size	155/80R13
Notes	70% Tread



 **LOT 21** Bale Trailer BKB Digital Auctions 

Accessories

Other	
Extensions	

Functionality Tests

Start	
Drives Forward	
Drives Backwards	
Brake Pedal Functions	

Supporting Documents

Certificate of Registration	
Vehicle Licence Certificate	
Service Record	
Other	

Functional Test Notes

General

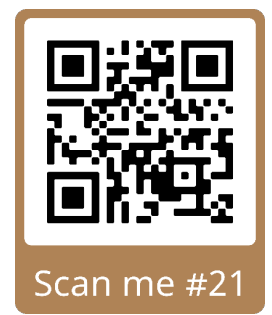
The Detailed Equipment Information is limited in scope, and BKB Auctioneers has not inspected any aspects or components of the equipment other than those expressly set forth herein. Unless expressly stated, we make no representations or warranties, express or implied, concerning the equipment or its components, including without limitation any representations or warranties concerning functionality, conformity or compliance with any safety standard or requirement of any applicable authority or regulatory body, fitness for any particular purpose, or merchantability. You are strongly advised to perform your own detailed inspection of the equipment prior to bidding.

Functions

The Equipment is not tested under load or operated in all available gears. We make no representation or warranty that equipment is operating in accordance with manufacturers' specifications. No inspection has been performed with respect to any functionality aspect other than those expressly included herein. Only select photos have been provided for individual undercarriage components, and may not be indicative of the condition of the entire undercarriage as a whole.

Dimensions

Measurements are given as an estimate only. Actual loaded dimensions may vary based on truck/trailer height and the loaded machine configuration/position. It is the buyer's responsibility to measure all loads before leaving our auction site to ensure the load is safe for transport. All measurements should be verified by the buyer. DO NOT rely on these measurements for transportation purposes.





Lot Nr.

22

Date

25 November 2020

**Detail Information**

Location	Worcester
Year	Unknown
Manufacturer	Custom build
Model	BAALKARRETJIE
Asset Type	Hay & Forage Equipment
Serial Number or VIN	
Condition	3 - Fair
Hours	
Km's	
Comes with	
Notes	



 **LOT 22** Bale Trailer BKB Digital Auctions 

**Operator Station**

Cab Type	
Transmission Detail: Speed	
Transmission Detail: Shift Type	
Differential Lock	
Notes	

**Engine**

Fuel Type	
Manufacturer	
Model	
Notes	



**Rear Options**

Hitch Type	Hak agter aan die baler
PTO	
Hydraulic Outlets	
Notes	

**Body Details**

Size	
Type	
Notes	



 **LOT 22** Bale Trailer BKB Digital Auctions 

**Drive Train**

Notes	
-------	--

**Weights**

Front Wheel Weights	
Back Wheel Weights	
Front Nose Weights	
Notes	

**Undercarriage/Suspension**

Tyre Manufacturer	SAVA EFFECTA +
Front Tyre Size	
Rear Tyre Size	155/80R13
Notes	60% Tread

**Accessories**

Other	
Extensions	

**Functionality Tests**

Start	
Drives Forward	
Drives Backwards	
Brake Pedal Functions	

**Supporting Documents**

Certificate of Registration	
Vehicle Licence Certificate	
Service Record	
Other	

Functional Test Notes

**General**

The Detailed Equipment Information is limited in scope, and BKB Auctioneers has not inspected any aspects or components of the equipment other than those expressly set forth herein. Unless expressly stated, we make no representations or warranties, express or implied, concerning the equipment or its components, including without limitation any representations or warranties concerning functionality, conformity or compliance with any safety standard or requirement of any applicable authority or regulatory body, fitness for any particular purpose, or merchantability. You are strongly advised to perform your own detailed inspection of the equipment prior to bidding.

**Functions**

The Equipment is not tested under load or operated in all available gears. We make no representation or warranty that equipment is operating in accordance with manufacturers' specifications. No inspection has been performed with respect to any functionality aspect other than those expressly included herein. Only select photos have been provided for individual undercarriage components, and may not be indicative of the condition of the entire undercarriage as a whole.

**Dimensions**

Measurements are given as an estimate only. Actual loaded dimensions may vary based on truck/trailer height and the loaded machine configuration/position. It is the buyer's responsibility to measure all loads before leaving our auction site to ensure the load is safe for transport. All measurements should be verified by the buyer. DO NOT rely on these measurements for transportation purposes.





Lot Nr.

23

Date

25 November 2020

**Detail Information**

Location	Worcester
Year	Unknown
Manufacturer	Custom build
Model	GRONDBREKER
Asset Type	Landscaping Equipment
Serial Number or VIN	
Condition	3 - Fair
Hours	
Km's	
Comes with	
Notes	



**LOT 23** Plow BKB Digital Auctions

**Operator Station**

Cab Type	
Transmission Detail: Speed	
Transmission Detail: Shift Type	
Differential Lock	
Notes	

**Engine**

Fuel Type	
Manufacturer	
Model	
Notes	

**Rear Options**

Hitch Type	
PTO	
Hydraulic Outlets	
Notes	

**Body Details**

Size	± 14 TANDE
Type	
Notes	



**LOT 23** Plow BKB Digital Auctions

**Drive Train**

Notes	
-------	--

**Weights**

Front Wheel Weights	
Back Wheel Weights	
Front Nose Weights	
Notes	

**Undercarriage/Suspension**

Tyre Manufacturer	
Front Tyre Size	
Rear Tyre Size	
Notes	

**Accessories**

Other	
Extensions	



**LOT 23** Plow BKB Digital Auctions

**Functionality Tests**

Start	
Drives Forward	
Drives Backwards	
Brake Pedal Functions	

**Supporting Documents**

Certificate of Registration	
Vehicle Licence Certificate	
Service Record	
Other	

Functional Test Notes

**General**

The Detailed Equipment Information is limited in scope, and BKB Auctioneers has not inspected any aspects or components of the equipment other than those expressly set forth herein. Unless expressly stated, we make no representations or warranties, express or implied, concerning the equipment or its components, including without limitation any representations or warranties concerning functionality, conformity or compliance with any safety standard or requirement of any applicable authority or regulatory body, fitness for any particular purpose, or merchantability. You are strongly advised to perform your own detailed inspection of the equipment prior to bidding.

**Functions**

The Equipment is not tested under load or operated in all available gears. We make no representation or warranty that equipment is operating in accordance with manufacturers' specifications. No inspection has been performed with respect to any functionality aspect other than those expressly included herein. Only select photos have been provided for individual undercarriage components, and may not be indicative of the condition of the entire undercarriage as a whole.

**Dimensions**

Measurements are given as an estimate only. Actual loaded dimensions may vary based on truck/trailer height and the loaded machine configuration/position. It is the buyer's responsibility to measure all loads before leaving our auction site to ensure the load is safe for transport. All measurements should be verified by the buyer. DO NOT rely on these measurements for transportation purposes.





Lot Nr.

24

Date

25 November 2020

**Detail Information**

Location	Worcester
Year	Unknown
Manufacturer	KUHN
Model	kraghark
Asset Type	Hay & Forage Equipment
Serial Number or VIN	
Condition	3 - Fair
Hours	
Km's	
Comes with	
Notes	3 PUNT Haak



**LOT 24** Kuhn Rake BKB Digital Auctions 

**Operator Station**

Cab Type	
Transmission Detail: Speed	
Transmission Detail: Shift Type	
Differential Lock	
Notes	

**Engine**

Fuel Type	
Manufacturer	
Model	
Notes	

**Rear Options**

Hitch Type	
PTO	Yes
Hydraulic Outlets	
Notes	

**Body Details**

Size	
Type	
Notes	



**LOT 24** Kuhn Rake BKB Digital Auctions 

**Drive Train**

Notes	
-------	--

**Weights**

Front Wheel Weights	
Back Wheel Weights	
Front Nose Weights	
Notes	



**LOT 24** Kuhn Rake BKB Digital Auctions 

**Undercarriage/Suspension**

Tyre Manufacturer	BKT ST 180
Front Tyre Size	
Rear Tyre Size	4.80-8
Notes	80% Tread

**Accessories**

Other	
Extensions	

**Functionality Tests**

Start	
Drives Forward	
Drives Backwards	
Brake Pedal Functions	

**Supporting Documents**

Certificate of Registration	
Vehicle Licence Certificate	
Service Record	
Other	

Functional Test Notes

**General**

The Detailed Equipment Information is limited in scope, and BKB Auctioneers has not inspected any aspects or components of the equipment other than those expressly set forth herein. Unless expressly stated, we make no representations or warranties, express or implied, concerning the equipment or its components, including without limitation any representations or warranties concerning functionality, conformity or compliance with any safety standard or requirement of any applicable authority or regulatory body, fitness for any particular purpose, or merchantability. You are strongly advised to perform your own detailed inspection of the equipment prior to bidding.

**Functions**

The Equipment is not tested under load or operated in all available gears. We make no representation or warranty that equipment is operating in accordance with manufacturers' specifications. No inspection has been performed with respect to any functionality aspect other than those expressly included herein. Only select photos have been provided for individual undercarriage components, and may not be indicative of the condition of the entire undercarriage as a whole.

**Dimensions**

Measurements are given as an estimate only. Actual loaded dimensions may vary based on truck/trailer height and the loaded machine configuration/position. It is the buyer's responsibility to measure all loads before leaving our auction site to ensure the load is safe for transport. All measurements should be verified by the buyer. DO NOT rely on these measurements for transportation purposes.



Scan me #24



Lot Nr.

25

Date

25 November 2020

**Detail Information**

Location	Worcester
Year	Unknown
Manufacturer	Custom Build
Model	WINGERD KONTRA SNY-EG (DIS)
Asset Type	Landscaping Equipment
Serial Number or VIN	
Condition	3 - Fair
Hours	
Km's	
Comes with	
Notes	3 PUNT haak



 **LOT 25** | WINGERD Kontra Disc Attachment | BKB Digital Auctions 

**Operator Station**

Cab Type	
Transmission Detail: Speed	
Transmission Detail: Shift Type	
Differential Lock	
Notes	

**Engine**

Fuel Type	
Manufacturer	
Model	
Notes	

**Rear Options**

Hitch Type	
PTO	
Hydraulic Outlets	
Notes	

**Body Details**

Size	
Type	
Notes	



 **LOT 25** | WINGERD Kontra Disc Attachment | BKB Digital Auctions 

**Drive Train**

Notes	
-------	--

**Weights**

Front Wheel Weights	
Back Wheel Weights	
Front Nose Weights	
Notes	

**Undercarriage/Suspension**

Tyre Manufacturer	
Front Tyre Size	
Rear Tyre Size	
Notes	



 **LOT 25** | WINGERD Kontra Disc Attachment | BKB Digital Auctions 

**Accessories**

Other	
Extensions	

**Functionality Tests**

Start	
Drives Forward	
Drives Backwards	
Brake Pedal Functions	

**Supporting Documents**

Certificate of Registration	
Vehicle Licence Certificate	
Service Record	
Other	

Functional Test Notes

**General**

The Detailed Equipment Information is limited in scope, and BKB Auctioneers has not inspected any aspects or components of the equipment other than those expressly set forth herein. Unless expressly stated, we make no representations or warranties, express or implied, concerning the equipment or its components, including without limitation any representations or warranties concerning functionality, conformity or compliance with any safety standard or requirement of any applicable authority or regulatory body, fitness for any particular purpose, or merchantability. You are strongly advised to perform your own detailed inspection of the equipment prior to bidding.

**Functions**

The Equipment is not tested under load or operated in all available gears. We make no representation or warranty that equipment is operating in accordance with manufacturers' specifications. No inspection has been performed with respect to any functionality aspect other than those expressly included herein. Only select photos have been provided for individual undercarriage components, and may not be indicative of the condition of the entire undercarriage as a whole.

**Dimensions**

Measurements are given as an estimate only. Actual loaded dimensions may vary based on truck/trailer height and the loaded machine configuration/position. It is the buyer's responsibility to measure all loads before leaving our auction site to ensure the load is safe for transport. All measurements should be verified by the buyer. DO NOT rely on these measurements for transportation purposes.



Scan me #25

Lot Nr.

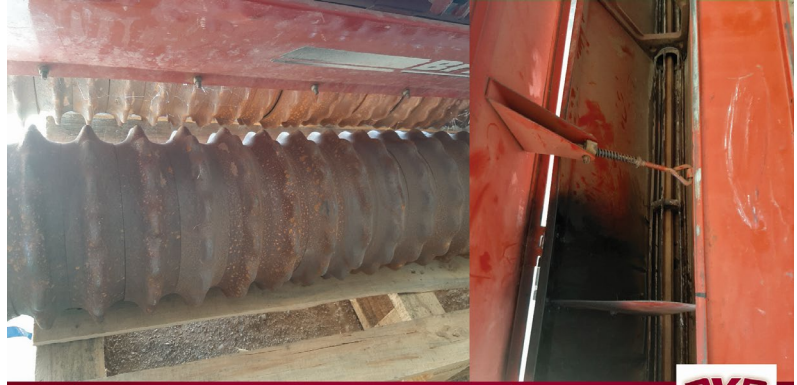
26

Date

25 November 2020

**Detail Information**

Location	Worcester
Year	Unknown
Manufacturer	BRILLIAN
Model	FYNSAAD PLANTER
Asset Type	Seeding and Tillage Equipment
Serial Number or VIN	
Condition	4 - Good
Hours	
Km's	
Comes with	
Notes	



 **LOT 26** Brillian Fine Sand Planter BKB Digital Auctions 

**Operator Station**

Cab Type	
Transmission Detail: Speed	
Transmission Detail: Shift Type	
Differential Lock	
Notes	

**Engine**

Fuel Type	
Manufacturer	
Model	
Notes	



**Rear Options**

Hitch Type	
PTO	
Hydraulic Outlets	
Notes	

**Body Details**

Size	1.5 M; 3 PUNT
Type	
Notes	



 **LOT 26** Brillian Fine Sand Planter BKB Digital Auctions 

**Drive Train**

Notes	
-------	--

**Weights**

Front Wheel Weights	
Back Wheel Weights	
Front Nose Weights	
Notes	

**Undercarriage/Suspension**

Tyre Manufacturer	
Front Tyre Size	
Rear Tyre Size	
Notes	

**Accessories**

Other	
Extensions	

**Functionality Tests**

Start	
Drives Forward	
Drives Backwards	
Brake Pedal Functions	

**Supporting Documents**

Certificate of Registration	
Vehicle Licence Certificate	
Service Record	
Other	

Functional Test Notes

**General**

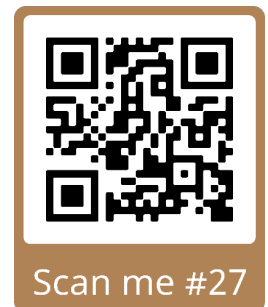
The Detailed Equipment Information is limited in scope, and BKB Auctioneers has not inspected any aspects or components of the equipment other than those expressly set forth herein. Unless expressly stated, we make no representations or warranties, express or implied, concerning the equipment or its components, including without limitation any representations or warranties concerning functionality, conformity or compliance with any safety standard or requirement of any applicable authority or regulatory body, fitness for any particular purpose, or merchantability. You are strongly advised to perform your own detailed inspection of the equipment prior to bidding.

**Functions**

The Equipment is not tested under load or operated in all available gears. We make no representation or warranty that equipment is operating in accordance with manufacturers' specifications. No inspection has been performed with respect to any functionality aspect other than those expressly included herein. Only select photos have been provided for individual undercarriage components, and may not be indicative of the condition of the entire undercarriage as a whole.

**Dimensions**

Measurements are given as an estimate only. Actual loaded dimensions may vary based on truck/trailer height and the loaded machine configuration/position. It is the buyer's responsibility to measure all loads before leaving our auction site to ensure the load is safe for transport. All measurements should be verified by the buyer. DO NOT rely on these measurements for transportation purposes.





Lot Nr.

27

Date

25 November 2020

**Detail Information**

Location	Worcester
Year	Unknown
Manufacturer	ROVIC
Model	MK 2 KUNSMISSTROOIER
Asset Type	Hay & Forage Equipment
Serial Number or VIN	
Condition	3 - Fair
Hours	
Km's	
Comes with Notes	SLEEPTIPE STROOIER; ONDERSTEL OORGEDOEN 2019



**LOT 27** Rovic Fertiliser Dispenser | BKB Digital Auctions | **BKB** The Trusted Name of Agriculture

**Operator Station**

Cab Type	
Transmission Detail: Speed	
Transmission Detail: Shift Type	
Differential Lock	
Notes	

**Engine**

Fuel Type	
Manufacturer	
Model	
Notes	

**Rear Options**

Hitch Type	
PTO	
Hydraulic Outlets	
Notes	

**Body Details**

Size	3 TON KAPASITEIT
Type	
Notes	



**LOT 27** Rovic Fertiliser Dispenser | BKB Digital Auctions | **BKB** The Trusted Name of Agriculture

**Drive Train**

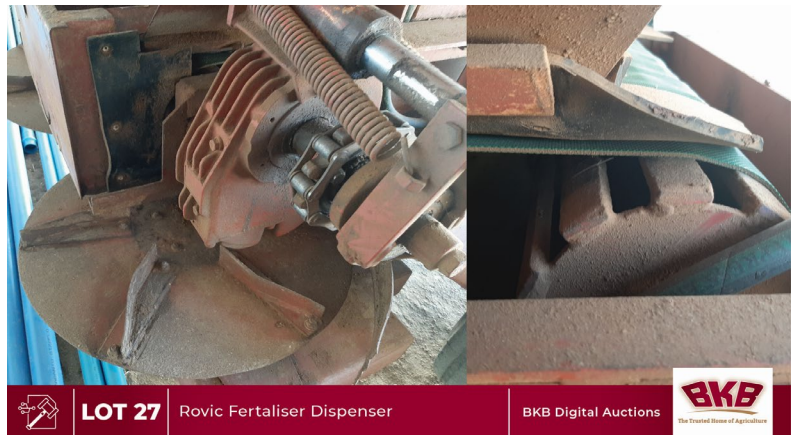
Notes	
-------	--

**Weights**

Front Wheel Weights	
Back Wheel Weights	
Front Nose Weights	
Notes	

**Undercarriage/Suspension**

Tyre Manufacturer	BKT IMPLEMENT
Front Tyre Size	
Rear Tyre Size	
Notes	50% Tread



**LOT 27** Rovic Fertiliser Dispenser | BKB Digital Auctions | **BKB** The Trusted Name of Agriculture

**Accessories**

Other	
Extensions	

**Functionality Tests**

Start	
Drives Forward	
Drives Backwards	
Brake Pedal Functions	

**Supporting Documents**

Certificate of Registration	
Vehicle Licence Certificate	
Service Record	
Other	

Functional Test Notes

**General**

The Detailed Equipment Information is limited in scope, and BKB Auctioneers has not inspected any aspects or components of the equipment other than those expressly set forth herein. Unless expressly stated, we make no representations or warranties, express or implied, concerning the equipment or its components, including without limitation any representations or warranties concerning functionality, conformity or compliance with any safety standard or requirement of any applicable authority or regulatory body, fitness for any particular purpose, or merchantability. You are strongly advised to perform your own detailed inspection of the equipment prior to bidding.

**Functions**

The Equipment is not tested under load or operated in all available gears. We make no representation or warranty that equipment is operating in accordance with manufacturers' specifications. No inspection has been performed with respect to any functionality aspect other than those expressly included herein. Only select photos have been provided for individual undercarriage components, and may not be indicative of the condition of the entire undercarriage as a whole.

**Dimensions**

Measurements are given as an estimate only. Actual loaded dimensions may vary based on truck/trailer height and the loaded machine configuration/position. It is the buyer's responsibility to measure all loads before leaving our auction site to ensure the load is safe for transport. All measurements should be verified by the buyer. DO NOT rely on these measurements for transportation purposes.



Lot Nr.

28

Date

25 November 2020

**Detail Information**

Location	Worcester
Year	Unknown
Manufacturer	JOBERT IMPLEMENTE
Model	GRONDBREKER
Asset Type	Landscaping Equipment
Serial Number or VIN	
Condition	4 - Good
Hours	
Km's	
Comes with	
Notes	3 punt 5 TAND



 **LOT 28** Joubert Plow  BKB Digital Auctions

**Operator Station**

Cab Type	
Transmission Detail: Speed	
Transmission Detail: Shift Type	
Differential Lock	
Notes	

**Engine**

Fuel Type	
Manufacturer	
Model	
Notes	

**Rear Options**

Hitch Type	
PTO	
Hydraulic Outlets	
Notes	

**Body Details**

Size	
Type	
Notes	



 **LOT 28** Joubert Plow  BKB Digital Auctions

**Drive Train**

Notes	
-------	--

**Weights**

Front Wheel Weights	
Back Wheel Weights	
Front Nose Weights	
Notes	

**Undercarriage/Suspension**

Tyre Manufacturer	
Front Tyre Size	
Rear Tyre Size	
Notes	

**Accessories**

Other	
Extensions	

**Functionality Tests**

Start	
Drives Forward	
Drives Backwards	
Brake Pedal Functions	

**Supporting Documents**

Certificate of Registration	
Vehicle Licence Certificate	
Service Record	
Other	

Functional Test Notes

**General**

The Detailed Equipment Information is limited in scope, and BKB Auctioneers has not inspected any aspects or components of the equipment other than those expressly set forth herein. Unless expressly stated, we make no representations or warranties, express or implied, concerning the equipment or its components, including without limitation any representations or warranties concerning functionality, conformity or compliance with any safety standard or requirement of any applicable authority or regulatory body, fitness for any particular purpose, or merchantability. You are strongly advised to perform your own detailed inspection of the equipment prior to bidding.

**Functions**

The Equipment is not tested under load or operated in all available gears. We make no representation or warranty that equipment is operating in accordance with manufacturers' specifications. No inspection has been performed with respect to any functionality aspect other than those expressly included herein. Only select photos have been provided for individual undercarriage components, and may not be indicative of the condition of the entire undercarriage as a whole.

**Dimensions**

Measurements are given as an estimate only. Actual loaded dimensions may vary based on truck/trailer height and the loaded machine configuration/position. It is the buyer's responsibility to measure all loads before leaving our auction site to ensure the load is safe for transport. All measurements should be verified by the buyer. DO NOT rely on these measurements for transportation purposes.





Lot Nr. **29**

Date **25 November 2020**

**Detail Information**

Location	<b>Worcester</b>
Year	<b>Unknown</b>
Manufacturer	<b>Custom Build</b>
Model	<b>ONKRUID SPUITKAR</b>
Asset Type	<b>Tractor Attachments</b>
Serial Number or VIN	
Condition	<b>3 - Fair</b>
Hours	
Km's	
Comes with	<b>MET PTO POMP EN BOOM</b>
Notes	

**Operator Station**

Cab Type	
Transmission Detail: Speed	
Transmission Detail: Shift Type	
Differential Lock	
Notes	

**Engine**

Fuel Type	
Manufacturer	
Model	
Notes	

**Rear Options**

Hitch Type	
PTO	
Hydraulic Outlets	
Notes	

**Body Details**

Size	<b>1 000 liter</b>
Type	
Notes	

**Drive Train**

Notes	
-------	--

**Weights**

Front Wheel Weights	
Back Wheel Weights	
Front Nose Weights	
Notes	

**Undercarriage/Suspension**

Tyre Manufacturer	
Front Tyre Size	
Rear Tyre Size	
Notes	

**Accessories**

Other	
Extensions	

**Functionality Tests**

Start	
Drives Forward	
Drives Backwards	
Brake Pedal Functions	

Functional Test Notes

**Supporting Documents**

Certificate of Registration	
Vehicle Licence Certificate	
Service Record	
Other	



**LOT 29** Weed Sprayer BKB Digital Auctions **BKB** The Trusted Name of Agriculture



**LOT 29** Weed Sprayer BKB Digital Auctions **BKB** The Trusted Name of Agriculture



**LOT 29** Weed Sprayer BKB Digital Auctions **BKB** The Trusted Name of Agriculture

**General**

The Detailed Equipment Information is limited in scope, and BKB Auctioneers has not inspected any aspects or components of the equipment other than those expressly set forth herein. Unless expressly stated, we make no representations or warranties, express or implied, concerning the equipment or its components, including without limitation any representations or warranties concerning functionality, conformity or compliance with any safety standard or requirement of any applicable authority or regulatory body, fitness for any particular purpose, or merchantability. You are strongly advised to perform your own detailed inspection of the equipment prior to bidding.

**Functions**

The Equipment is not tested under load or operated in all available gears. We make no representation or warranty that equipment is operating in accordance with manufacturers' specifications. No inspection has been performed with respect to any functionality aspect other than those expressly included herein. Only select photos have been provided for individual undercarriage components, and may not be indicative of the condition of the entire undercarriage as a whole.

**Dimensions**

Measurements are given as an estimate only. Actual loaded dimensions may vary based on truck/trailer height and the loaded machine configuration/position. It is the buyer's responsibility to measure all loads before leaving our auction site to ensure the load is safe for transport. All measurements should be verified by the buyer. DO NOT rely on these measurements for transportation purposes.



Lot Nr.

30

Date

25 November 2020

**Detail Information**

Location	Worcester
Year	Unknown
Manufacturer	LEDGUARD
Model	Trimmer
Asset Type	Tractor Attachments
Serial Number or VIN	
Condition	3 - Fair
Hours	
Km's	
Comes with	
Notes	HIDROULIES OP TREKKER



 **LOT 30** Ledguard Trimmer  BKB Digital Auctions The Trusted Name of Agriculture

**Operator Station**

Cab Type	
Transmission Detail: Speed	
Transmission Detail: Shift Type	
Differential Lock	
Notes	

**Engine**

Fuel Type	
Manufacturer	
Model	
Notes	

**Rear Options**

Hitch Type	
PTO	
Hydraulic Outlets	
Notes	

**Body Details**

Size	
Type	
Notes	

**Drive Train**

Notes	
-------	--

**Weights**

Front Wheel Weights	
Back Wheel Weights	
Front Nose Weights	
Notes	

**Undercarriage/Suspension**

Tyre Manufacturer	
Front Tyre Size	
Rear Tyre Size	
Notes	

**Accessories**

Other	
Extensions	

**Functionality Tests**

Start	
Drives Forward	
Drives Backwards	
Brake Pedal Functions	

**Supporting Documents**

Certificate of Registration	
Vehicle Licence Certificate	
Service Record	
Other	

Functional Test Notes

**General**

The Detailed Equipment Information is limited in scope, and BKB Auctioneers has not inspected any aspects or components of the equipment other than those expressly set forth herein. Unless expressly stated, we make no representations or warranties, express or implied, concerning the equipment or its components, including without limitation any representations or warranties concerning functionality, conformity or compliance with any safety standard or requirement of any applicable authority or regulatory body, fitness for any particular purpose, or merchantability. You are strongly advised to perform your own detailed inspection of the equipment prior to bidding.

**Functions**

The Equipment is not tested under load or operated in all available gears. We make no representation or warranty that equipment is operating in accordance with manufacturers' specifications. No inspection has been performed with respect to any functionality aspect other than those expressly included herein. Only select photos have been provided for individual undercarriage components, and may not be indicative of the condition of the entire undercarriage as a whole.

**Dimensions**

Measurements are given as an estimate only. Actual loaded dimensions may vary based on truck/trailer height and the loaded machine configuration/position. It is the buyer's responsibility to measure all loads before leaving our auction site to ensure the load is safe for transport. All measurements should be verified by the buyer. DO NOT rely on these measurements for transportation purposes.





Lot Nr.

31

Date

25 November 2020

Detail Information

Location	Worcester
Year	Unknown
Manufacturer	Stettyn
Model	spilpunt
Asset Type	Other Agri Equipment
Serial Number or VIN	
Condition	3 - Fair
Hours	
Km's	

Comes with	Senninger sproeiers
Notes	Afbreuk en verwydering vir die koper se rekening

Operator Station

Cab Type	
Transmission Detail: Speed	
Transmission Detail: Shift Type	
Differential Lock	
Notes	

Engine

Fuel Type	
Manufacturer	
Model	
Notes	

Rear Options

Hitch Type	
PTO	
Hydraulic Outlets	
Notes	

Body Details

Size	5 TORING
Type	32 HA
Notes	Volledig

Drive Train

Notes	
-------	--

Weights

Front Wheel Weights	
Back Wheel Weights	
Front Nose Weights	
Notes	

Undercarriage/Suspension

Tyre Manufacturer	
Front Tyre Size	
Rear Tyre Size	
Notes	#REF!

Accessories

Other	
Extensions	

Functionality Tests

Start	
Drives Forward	
Drives Backwards	
Brake Pedal Functions	

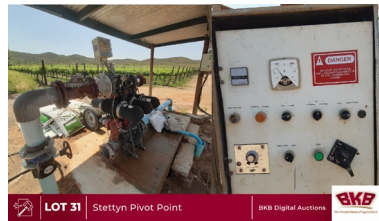
Functional Test Notes

Supporting Documents

Certificate of Registration	
Vehicle Licence Certificate	
Service Record	
Other	



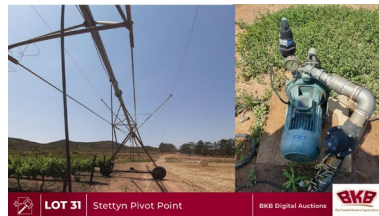
LOT 31 Stettyn Pivot Point BKB Digital Auctions BKB The Trusted Name of Agriculture



LOT 31 Stettyn Pivot Point BKB Digital Auctions BKB



LOT 31 Stettyn Pivot Point BKB Digital Auctions BKB



LOT 31 Stettyn Pivot Point BKB Digital Auctions BKB

General

The Detailed Equipment Information is limited in scope, and BKB Auctioneers has not inspected any aspects or components of the equipment other than those expressly set forth herein. Unless expressly stated, we make no representations or warranties, express or implied, concerning the equipment or its components, including without limitation any representations or warranties concerning functionality, conformity or compliance with any safety standard or requirement of any applicable authority or regulatory body, fitness for any particular purpose, or merchantability. You are strongly advised to perform your own detailed inspection of the equipment prior to bidding.

Functions

The Equipment is not tested under load or operated in all available gears. We make no representation or warranty that equipment is operating in accordance with manufacturers' specifications. No inspection has been performed with respect to any functionality aspect other than those expressly included herein. Only select photos have been provided for individual undercarriage components, and may not be indicative of the condition of the entire undercarriage as a whole.

Dimensions

Measurements are given as an estimate only. Actual loaded dimensions may vary based on truck/trailer height and the loaded machine configuration/position. It is the buyer's responsibility to measure all loads before leaving our auction site to ensure the load is safe for transport. All measurements should be verified by the buyer. DO NOT rely on these measurements for transportation purposes.



Scan me #31

Lot Nr.

32

Date

25 November 2020

Detail Information

Location	Worcester
Year	
Manufacturer	Stettyn
Model	spilpunt
Asset Type	Other Agri Equipment
Serial Number or VIN	
Condition	3 - Fair
Hours	
Km's	
Comes with	Senninger sproeiers
Notes	Getal sal bevestig word op dag van veiling



Operator Station

Cab Type	
Transmission Detail: Speed	
Transmission Detail: Shift Type	
Differential Lock	
Notes	



Engine

Fuel Type	
Manufacturer	
Model	
Notes	



Rear Options

Hitch Type	
PTO	
Hydraulic Outlets	
Notes	



Body Details

Size	4 TORING
Type	22 HA
Notes	Volledig

Drive Train

Notes	
-------	--

Weights

Front Wheel Weights	
Back Wheel Weights	
Front Nose Weights	
Notes	



Undercarriage/Suspension

Tyre Manufacturer	
Front Tyre Size	
Rear Tyre Size	
Notes	70% Tread



Accessories

Other	
Extensions	

Functionality Tests

Start	
Drives Forward	
Drives Backwards	
Brake Pedal Functions	

Supporting Documents

Certificate of Registration	
Vehicle Licence Certificate	
Service Record	
Other	

Functional Test Notes

Empty text box for functional test notes.

General

The Detailed Equipment Information is limited in scope, and BKB Auctioneers has not inspected any aspects or components of the equipment other than those expressly set forth herein. Unless expressly stated, we make no representations or warranties, express or implied, concerning the equipment or its components, including without limitation any representations or warranties concerning functionality, conformity or compliance with any safety standard or requirement of any applicable authority or regulatory body, fitness for any particular purpose, or merchantability. You are strongly advised to perform your own detailed inspection of the equipment prior to bidding.

Functions

The Equipment is not tested under load or operated in all available gears. We make no representation or warranty that equipment is operating in accordance with manufacturers' specifications. No inspection has been performed with respect to any functionality aspect other than those expressly included herein. Only select photos have been provided for individual undercarriage components, and may not be indicative of the condition of the entire undercarriage as a whole.

Dimensions

Measurements are given as an estimate only. Actual loaded dimensions may vary based on truck/trailer height and the loaded machine configuration/position. It is the buyer's responsibility to measure all loads before leaving our auction site to ensure the load is safe for transport. All measurements should be verified by the buyer. DO NOT rely on these measurements for transportation purposes.





Lot Nr.

33

Date

25 November 2020

**Detail Information**

Location	Worcester
Year	
Manufacturer	
Model	BESPROEINGS PYPE
Asset Type	Other Agri Equipment
Serial Number or VIN	
Condition	4 - Good
Hours	
Km's	
Comes with	
Notes	Getal sal bevestig word op dag van veiling



	<b>LOT 33</b> Irrigation Pipes	BKB Digital Auctions	
---	--------------------------------	----------------------	---

**Operator Station**

Cab Type	
Transmission Detail: Speed	
Transmission Detail: Shift Type	
Differential Lock	
Notes	

**Engine**

Fuel Type	
Manufacturer	
Model	
Notes	

**Rear Options**

Hitch Type	
PTO	
Hydraulic Outlets	
Notes	

**Body Details**

Size	
Type	
Notes	

**Drive Train**

Notes	
-------	--

**Weights**

Front Wheel Weights	
Back Wheel Weights	
Front Nose Weights	
Notes	

**Undercarriage/Suspension**

Tyre Manufacturer	
Front Tyre Size	
Rear Tyre Size	
Notes	

**Accessories**

Other	
Extensions	

**Functionality Tests**

Start	
Drives Forward	
Drives Backwards	
Brake Pedal Functions	

**Supporting Documents**

Certificate of Registration	
Vehicle Licence Certificate	
Service Record	
Other	

**Functional Test Notes**

--

**General**

The Detailed Equipment Information is limited in scope, and BKB Auctioneers has not inspected any aspects or components of the equipment other than those expressly set forth herein. Unless expressly stated, we make no representations or warranties, express or implied, concerning the equipment or its components, including without limitation any representations or warranties concerning functionality, conformity or compliance with any safety standard or requirement of any applicable authority or regulatory body, fitness for any particular purpose, or merchantability. You are strongly advised to perform your own detailed inspection of the equipment prior to bidding.

**Functions**

The Equipment is not tested under load or operated in all available gears. We make no representation or warranty that equipment is operating in accordance with manufacturers' specifications. No inspection has been performed with respect to any functionality aspect other than those expressly included herein. Only select photos have been provided for individual undercarriage components, and may not be indicative of the condition of the entire undercarriage as a whole.

**Dimensions**

Measurements are given as an estimate only. Actual loaded dimensions may vary based on truck/trailer height and the loaded machine configuration/position. It is the buyer's responsibility to measure all loads before leaving our auction site to ensure the load is safe for transport. All measurements should be verified by the buyer. DO NOT rely on these measurements for transportation purposes.



Lot Nr.

34

Date

25 November 2020

## Detail Information

Location	Worcester
Year	
Manufacturer	
Model	SELF STAAN SPROEIERS
Asset Type	Other Agri Equipment
Serial Number or VIN	
Condition	4 - Good
Hours	
Km's	
Comes with	
Notes	Getal sal bevestig word op dag van veiling



## Operator Station

Cab Type	
Transmission Detail: Speed	
Transmission Detail: Shift Type	
Differential Lock	
Notes	

## Engine

Fuel Type	
Manufacturer	
Model	
Notes	

## Rear Options

Hitch Type	
PTO	
Hydraulic Outlets	
Notes	

## Body Details

Size	
Type	
Notes	

## Drive Train

Notes	
-------	--

## Weights

Front Wheel Weights	
Back Wheel Weights	
Front Nose Weights	
Notes	

## Undercarriage/Suspension

Tyre Manufacturer	
Front Tyre Size	
Rear Tyre Size	
Notes	

## Accessories

Other	
Extensions	

## Functionality Tests

Start	
Drives Forward	
Drives Backwards	
Brake Pedal Functions	

## Supporting Documents

Certificate of Registration	
Vehicle Licence Certificate	
Service Record	
Other	

Functional Test Notes

--

## General

The Detailed Equipment Information is limited in scope, and BKB Auctioneers has not inspected any aspects or components of the equipment other than those expressly set forth herein. Unless expressly stated, we make no representations or warranties, express or implied, concerning the equipment or its components, including without limitation any representations or warranties concerning functionality, conformity or compliance with any safety standard or requirement of any applicable authority or regulatory body, fitness for any particular purpose, or merchantability. You are strongly advised to perform your own detailed inspection of the equipment prior to bidding.

## Functions

The Equipment is not tested under load or operated in all available gears. We make no representation or warranty that equipment is operating in accordance with manufacturers' specifications. No inspection has been performed with respect to any functionality aspect other than those expressly included herein. Only select photos have been provided for individual undercarriage components, and may not be indicative of the condition of the entire undercarriage as a whole.

## Dimensions

Measurements are given as an estimate only. Actual loaded dimensions may vary based on truck/trailer height and the loaded machine configuration/position. It is the buyer's responsibility to measure all loads before leaving our auction site to ensure the load is safe for transport. All measurements should be verified by the buyer. DO NOT rely on these measurements for transportation purposes.



LOT 34

Freestanding Irrigators

BKB Digital Auctions



Scan me #34



Lot Nr.

35

Date

25 November 2020

**Detail Information**

Location	Worcester
Year	
Manufacturer	
Model	Waterpype
Asset Type	Other Agri Equipment
Serial Number or VIN	
Condition	4 - Good
Hours	
Km's	
Comes with	
Notes	Getal sal bevestig word op dag van veiling

**Operator Station**

Cab Type	
Transmission Detail: Speed	
Transmission Detail: Shift Type	
Differential Lock	
Notes	

**Engine**

Fuel Type	
Manufacturer	
Model	
Notes	

**Rear Options**

Hitch Type	
PTO	
Hydraulic Outlets	
Notes	

**Body Details**

Size	
Type	
Notes	

**Drive Train**

Notes	
-------	--

**Weights**

Front Wheel Weights	
Back Wheel Weights	
Front Nose Weights	
Notes	

**Undercarriage/Suspension**

Tyre Manufacturer	
Front Tyre Size	
Rear Tyre Size	
Notes	

**Accessories**

Other	
Extensions	

**Functionality Tests**

Start	
Drives Forward	
Drives Backwards	
Brake Pedal Functions	

**Supporting Documents**

Certificate of Registration	
Vehicle Licence Certificate	
Service Record	
Other	

Functional Test Notes

**General**

The Detailed Equipment Information is limited in scope, and BKB Auctioneers has not inspected any aspects or components of the equipment other than those expressly set forth herein. Unless expressly stated, we make no representations or warranties, express or implied, concerning the equipment or its components, including without limitation any representations or warranties concerning functionality, conformity or compliance with any safety standard or requirement of any applicable authority or regulatory body, fitness for any particular purpose, or merchantability. You are strongly advised to perform your own detailed inspection of the equipment prior to bidding.

**Functions**

The Equipment is not tested under load or operated in all available gears. We make no representation or warranty that equipment is operating in accordance with manufacturers' specifications. No inspection has been performed with respect to any functionality aspect other than those expressly included herein. Only select photos have been provided for individual undercarriage components, and may not be indicative of the condition of the entire undercarriage as a whole.

**Dimensions**

Measurements are given as an estimate only. Actual loaded dimensions may vary based on truck/trailer height and the loaded machine configuration/position. It is the buyer's responsibility to measure all loads before leaving our auction site to ensure the load is safe for transport. All measurements should be verified by the buyer. DO NOT rely on these measurements for transportation purposes.



LOT 35

Water Pipes

BKB Digital Auctions



Scan me #35

Lot Nr.

36

Date

25 November 2020

Detail Information

Location	Worcester
Year	
Manufacturer	RECAM INTERNATIONAL
Model	MC 60 KOELKAMER
Asset Type	Other Agri Equipment
Serial Number or VIN	40044
Condition	
Hours	
Km's	
Comes with	
Notes	



**LOT 36** Recam International Coolroom | BKB Digital Auctions | **BKB** The Trusted Name of Agriculture

Operator Station

Cab Type	
Transmission Detail: Speed	
Transmission Detail: Shift Type	
Differential Lock	
Notes	

Engine

Fuel Type	
Manufacturer	
Model	
Notes	

Rear Options

Hitch Type	
PTO	
Hydraulic Outlets	
Notes	

Body Details

Size	
Type	
Notes	

Drive Train

Notes	
-------	--

Weights

Front Wheel Weights	
Back Wheel Weights	
Front Nose Weights	
Notes	

Undercarriage/Suspension

Tyre Manufacturer	
Front Tyre Size	
Rear Tyre Size	
Notes	

Accessories

Other	
Extensions	

Functionality Tests

Start	
Drives Forward	
Drives Backwards	
Brake Pedal Functions	

Supporting Documents

Certificate of Registration	
Vehicle Licence Certificate	
Service Record	
Other	

Functional Test Notes

General

The Detailed Equipment Information is limited in scope, and BKB Auctioneers has not inspected any aspects or components of the equipment other than those expressly set forth herein. Unless expressly stated, we make no representations or warranties, express or implied, concerning the equipment or its components, including without limitation any representations or warranties concerning functionality, conformity or compliance with any safety standard or requirement of any applicable authority or regulatory body, fitness for any particular purpose, or merchantability. You are strongly advised to perform your own detailed inspection of the equipment prior to bidding.

Functions

The Equipment is not tested under load or operated in all available gears. We make no representation or warranty that equipment is operating in accordance with manufacturers' specifications. No inspection has been performed with respect to any functionality aspect other than those expressly included herein. Only select photos have been provided for individual undercarriage components, and may not be indicative of the condition of the entire undercarriage as a whole.

Dimensions

Measurements are given as an estimate only. Actual loaded dimensions may vary based on truck/trailer height and the loaded machine configuration/position. It is the buyer's responsibility to measure all loads before leaving our auction site to ensure the load is safe for transport. All measurements should be verified by the buyer. DO NOT rely on these measurements for transportation purposes.



**LOT 36** Recam International Coolroom | BKB Digital Auctions | **BKB** The Trusted Name of Agriculture

MANUFACTURED BY **RECAM** INTERNATIONAL  
 MODEL MC 60 SERIAL NO 40044  
 FAN MOTOR 0.6 AMPS TOTAL  
 DEFROST ELEMENTS KW TOTAL  
 HOT GAS DEFROST KW TOTAL





Lot Nr.

37

Date

25 November 2020

**Detail Information**

Location	Worcester
Year	
Manufacturer	
Model	STOEP BANKIES
Asset Type	Other Agri Equipment
Serial Number or VIN	
Condition	4 - Good
Hours	
Km's	
Comes with	
Notes	Getal sal bevestig word op dag van veiling



	<b>LOT 37</b> Patio Table & Chairs	BKB Digital Auctions	<b>BKB</b> The Trusted Name of Agriculture
--	------------------------------------	----------------------	---

**Operator Station**

Cab Type	
Transmission Detail: Speed	
Transmission Detail: Shift Type	
Differential Lock	
Notes	

**Engine**

Fuel Type	
Manufacturer	
Model	
Notes	

**Rear Options**

Hitch Type	
PTO	
Hydraulic Outlets	
Notes	

**Body Details**

Size	
Type	
Notes	

**Drive Train**

Notes	
-------	--

**Weights**

Front Wheel Weights	
Back Wheel Weights	
Front Nose Weights	
Notes	

**Undercarriage/Suspension**

Tyre Manufacturer	
Front Tyre Size	
Rear Tyre Size	
Notes	

**Accessories**

Other	
Extensions	

**Functionality Tests**

Start	
Drives Forward	
Drives Backwards	
Brake Pedal Functions	

**Supporting Documents**

Certificate of Registration	
Vehicle Licence Certificate	
Service Record	
Other	

Functional Test Notes

**General**

The Detailed Equipment Information is limited in scope, and BKB Auctioneers has not inspected any aspects or components of the equipment other than those expressly set forth herein. Unless expressly stated, we make no representations or warranties, express or implied, concerning the equipment or its components, including without limitation any representations or warranties concerning functionality, conformity or compliance with any safety standard or requirement of any applicable authority or regulatory body, fitness for any particular purpose, or merchantability. You are strongly advised to perform your own detailed inspection of the equipment prior to bidding.

**Functions**

The Equipment is not tested under load or operated in all available gears. We make no representation or warranty that equipment is operating in accordance with manufacturers' specifications. No inspection has been performed with respect to any functionality aspect other than those expressly included herein. Only select photos have been provided for individual undercarriage components, and may not be indicative of the condition of the entire undercarriage as a whole.

**Dimensions**

Measurements are given as an estimate only. Actual loaded dimensions may vary based on truck/trailer height and the loaded machine configuration/position. It is the buyer's responsibility to measure all loads before leaving our auction site to ensure the load is safe for transport. All measurements should be verified by the buyer. DO NOT rely on these measurements for transportation purposes.



Lot Nr.

38


Date

25 November 2020

**Detail Information**

Location	Worcester
Year	
Manufacturer	
Model	BESPROEINGS "TREE HOGS"
Asset Type	Other Agri Equipment
Serial Number or VIN	
Condition	4 - Good
Hours	
Km's	
Comes with	
Notes	Getal sal bevestig word op dag van veiling ± 2,000



 **LOT 38** Irrigation "Tree Hogs" BKB Digital Auctions 

**Operator Station**

Cab Type	
Transmission Detail: Speed	
Transmission Detail: Shift Type	
Differential Lock	
Notes	

**Engine**

Fuel Type	
Manufacturer	
Model	
Notes	

**Rear Options**

Hitch Type	
PTO	
Hydraulic Outlets	
Notes	

**Body Details**

Size	
Type	
Notes	

**Drive Train**

Notes	
-------	--

**Weights**

Front Wheel Weights	
Back Wheel Weights	
Front Nose Weights	
Notes	

**Undercarriage/Suspension**

Tyre Manufacturer	
Front Tyre Size	
Rear Tyre Size	
Notes	

**Accessories**

Other	
Extensions	

**Functionality Tests**

Start	
Drives Forward	
Drives Backwards	
Brake Pedal Functions	

**Supporting Documents**

Certificate of Registration	
Vehicle Licence Certificate	
Service Record	
Other	

Functional Test Notes

**General**

The Detailed Equipment Information is limited in scope, and BKB Auctioneers has not inspected any aspects or components of the equipment other than those expressly set forth herein. Unless expressly stated, we make no representations or warranties, express or implied, concerning the equipment or its components, including without limitation any representations or warranties concerning functionality, conformity or compliance with any safety standard or requirement of any applicable authority or regulatory body, fitness for any particular purpose, or merchantability. You are strongly advised to perform your own detailed inspection of the equipment prior to bidding.

**Functions**

The Equipment is not tested under load or operated in all available gears. We make no representation or warranty that equipment is operating in accordance with manufacturers' specifications. No inspection has been performed with respect to any functionality aspect other than those expressly included herein. Only select photos have been provided for individual undercarriage components, and may not be indicative of the condition of the entire undercarriage as a whole.

**Dimensions**

Measurements are given as an estimate only. Actual loaded dimensions may vary based on truck/trailer height and the loaded machine configuration/position. It is the buyer's responsibility to measure all loads before leaving our auction site to ensure the load is safe for transport. All measurements should be verified by the buyer. DO NOT rely on these measurements for transportation purposes.





Lot Nr.

39

Date

25 November 2020

**Detail Information**

Location	Worcester
Year	
Manufacturer	
Model	Voerbake
Asset Type	Livestock Handling Equipment
Serial Number or VIN	
Condition	3 - Fair
Hours	
Km's	
Comes with	
Notes	Getal sal bevestig word op dag van veiling



**Operator Station**

Cab Type	
Transmission Detail: Speed	
Transmission Detail: Shift Type	
Differential Lock	
Notes	

**Engine**

Fuel Type	
Manufacturer	
Model	
Notes	

**Rear Options**

Hitch Type	
PTO	
Hydraulic Outlets	
Notes	

**Body Details**

Size	
Type	
Notes	

**Drive Train**

Notes	
-------	--

**Weights**

Front Wheel Weights	
Back Wheel Weights	
Front Nose Weights	
Notes	

**Undercarriage/Suspension**

Tyre Manufacturer	
Front Tyre Size	
Rear Tyre Size	
Notes	

**Accessories**

Other	
Extensions	

**Functionality Tests**

Start	
Drives Forward	
Drives Backwards	
Brake Pedal Functions	

**Supporting Documents**

Certificate of Registration	
Vehicle Licence Certificate	
Service Record	
Other	

Functional Test Notes

--

**General**

The Detailed Equipment Information is limited in scope, and BKB Auctioneers has not inspected any aspects or components of the equipment other than those expressly set forth herein. Unless expressly stated, we make no representations or warranties, express or implied, concerning the equipment or its components, including without limitation any representations or warranties concerning functionality, conformity or compliance with any safety standard or requirement of any applicable authority or regulatory body, fitness for any particular purpose, or merchantability. You are strongly advised to perform your own detailed inspection of the equipment prior to bidding.

**Functions**

The Equipment is not tested under load or operated in all available gears. We make no representation or warranty that equipment is operating in accordance with manufacturers' specifications. No inspection has been performed with respect to any functionality aspect other than those expressly included herein. Only select photos have been provided for individual undercarriage components, and may not be indicative of the condition of the entire undercarriage as a whole.

**Dimensions**

Measurements are given as an estimate only. Actual loaded dimensions may vary based on truck/trailer height and the loaded machine configuration/position. It is the buyer's responsibility to measure all loads before leaving our auction site to ensure the load is safe for transport. All measurements should be verified by the buyer. DO NOT rely on these measurements for transportation purposes.


**LOT 39** Feed bowls / Voerbakke
 BKB Digital Auctions



Lot Nr.

40

Date

25 November 2020

**Detail Information**

Location	Worcester
Year	
Manufacturer	
Model	GRASSNYERS
Asset Type	Other Agri Equipment
Serial Number or VIN	
Condition	2 - Poor
Hours	
Km's	
Comes with	
Notes	Getal sal bevestig word op dag van veiling

**Operator Station**

Cab Type	
Transmission Detail: Speed	
Transmission Detail: Shift Type	
Differential Lock	
Notes	

**Engine**

Fuel Type	
Manufacturer	
Model	
Notes	

**Rear Options**

Hitch Type	
PTO	
Hydraulic Outlets	
Notes	

**Body Details**

Size	
Type	
Notes	

**Drive Train**

Notes	
-------	--

**Weights**

Front Wheel Weights	
Back Wheel Weights	
Front Nose Weights	
Notes	

**Undercarriage/Suspension**

Tyre Manufacturer	
Front Tyre Size	
Rear Tyre Size	
Notes	

**Accessories**

Other	
Extensions	

**Functionality Tests**

Start	
Drives Forward	
Drives Backwards	
Brake Pedal Functions	

**Supporting Documents**

Certificate of Registration	
Vehicle Licence Certificate	
Service Record	
Other	

Functional Test Notes

**General**

The Detailed Equipment Information is limited in scope, and BKB Auctioneers has not inspected any aspects or components of the equipment other than those expressly set forth herein. Unless expressly stated, we make no representations or warranties, express or implied, concerning the equipment or its components, including without limitation any representations or warranties concerning functionality, conformity or compliance with any safety standard or requirement of any applicable authority or regulatory body, fitness for any particular purpose, or merchantability. You are strongly advised to perform your own detailed inspection of the equipment prior to bidding.

**Functions**

The Equipment is not tested under load or operated in all available gears. We make no representation or warranty that equipment is operating in accordance with manufacturers' specifications. No inspection has been performed with respect to any functionality aspect other than those expressly included herein. Only select photos have been provided for individual undercarriage components, and may not be indicative of the condition of the entire undercarriage as a whole.

**Dimensions**

Measurements are given as an estimate only. Actual loaded dimensions may vary based on truck/trailer height and the loaded machine configuration/position. It is the buyer's responsibility to measure all loads before leaving our auction site to ensure the load is safe for transport. All measurements should be verified by the buyer. DO NOT rely on these measurements for transportation purposes.



LOT 40 Mowers

BKB Digital Auctions



The Trusted Name of Agriculture



Scan me #40



**RULES OF BKB DIGITAL AUCTIONS.**  
**TERMS AND CONDITIONS FOR ONLINE AUCTION PLATFORMS**

These rules of auctions is applicable to all digital auctions held under the control of either BKB Limited, registration number 1998/012435/06 with business These terms and conditions apply to all on line bidding at auction sales conducted.

**1. Applicable Law**

- 1.1 The auction will be governed by the Laws of the Republic of South Africa
- 1.2 The rules of this auction complies with section 45 of the Consumer Protection Act 68 of 2008 (CPA) and Section 43(1) of the Electronic Communications and Transactions Act 25 of 2002. (ECTA). For more information go to <http://www.legalrights.co.za/wp-content/uploads/2017/03/CONSUMER-PROTECTION-ACT-NO.-68-OF-2008.pdf> or [https://www.gov.za/sites/default/files/gcis\\_document/201409/a25-02.pdf](https://www.gov.za/sites/default/files/gcis_document/201409/a25-02.pdf)
- 1.3 Section 44(1) of the ECTA affording purchasers a cooling off period does not apply to online auctions.
- 1.4 All persons, when registering as a bidder must, in doing so, comply with Chapter 1 of the Financial Intelligence Centre Act (FICA)
- 1.5 The Auctioneer is hereby appointed by the Purchaser and Seller to act for and on behalf of the Purchaser and Seller as agent in accordance with Section 54 of the Value-Added Tax Act, 1991, in respect of all tax invoices, credit and/or debit notes in respect of all livestock, game and/or goods offered at the auction or any costs of transport and insurances premiums paid for on behalf of the Purchaser and Seller.

**2. Bidder Registration and pre-inspection of goods and/or livestock**

- 2.1. Any person who wishes to bid on the auction must register as a bidder online and in doing so comply with Chapter 1 of FICA. For more information on the requirements set out in FICA go to [https://www.fic.gov.za/Documents/FIC%20Act%20with%202017%20amendments%20\(1\)%20\(1\).pdf](https://www.fic.gov.za/Documents/FIC%20Act%20with%202017%20amendments%20(1)%20(1).pdf)
- 2.2. The online auction service is only available to legal and natural persons who can enter into legally binding contract under the laws of South Africa. Without derogating from the generality thereof, the auction services are not available to minors.
- 2.3. Any person registering as a bidder online is deemed to be the principle contracting party and no person will be allowed to register as an agent of a third party unless with the consent of the Auctioneer.
- 2.4. By registering online as a bidder, the bidder consents to the collection and use of personal information by the Auctioneer for the purposes of creating the registration, and participation in the online auction.
- 2.5. In the event that the Auctioneer consents to an agent registering on behalf of a principle then in that event such a person together with his principal must both register online prior to the auction and provide all necessary information as required in Chapter 1 of the regulations issued in terms of FICA 2001 with regard to proof of the principle's identity.
- 2.6. Where the bidder is a company the person completing the online registration must be duly authorised by resolution of the company to register as a purchaser and shall upload a certified copy of the resolution. (For purposes of this rule any reference to a company will include any reference to juristic person including partnerships, trusts or incorporated entities).
- 2.7. Once registered bidders must keep their account details confidential and must not permit third parties to use or access their account as purchasers will remain liable for all bids entered via their account online.
- 2.8. The final auction catalogue will be available online at least 24hrs before the commencement date and time of the auction.
- 2.9. Bidders who wish to inspect the various lots which will be presented at the auction, may inspect such lots online or at the seller's premises at a time and date specified on the Auctioneer website.
- 2.10. All livestock, game and goods are sold "voetstoots" and the purchasers do not enjoy the protection of Section 55 and 56 of the Consumer Protection Act.
- 2.11. Any information provided regarding the quality, breeding, age, date of insemination, condition, reproductive status or any information regarding health, production or mass or any other aspect of the livestock and/or game, is provided by the seller and any misrepresentation by the seller is without the cooperation or knowledge of the Auctioneer. Any right of recourse as a result of such misrepresentation shall be against the seller.

**3. Bidding Procedure**

- 3.1. The auction shall take place at the date and time as advertised or published and will not be postponed or delayed to enable any member or group of the public to partake in the auction.
- 3.2. The auction is not an absolute auction but subject to reserved prices settled by the sellers and as pointed out by the Auctioneer prior to the sale of the said asset or lot.
- 3.3. Should the Auctioneer become aware of any fault on advertising material or any other publication or amendment to these Rules of Auction, the Auctioneer will prior to the auction point out and when necessary amend such mistakes in the advertisement or publication.
- 3.4. Any bid made does not include VAT which, where applicable, will be added to the bidding price for which a VAT invoice will be issued.
- 3.5. During a sale for which the bidder has registered, the bidder can bid for a lot by clicking on the bid button.
- 3.6. The current bid will be displayed on the bidder's screen during the sale.
- 3.7. Until the fall of the hammer as contemplated in section 45(3) of CPA, any bid may be retracted or declined by the Auctioneer if not compliant with the CPA or the regulations issued in terms thereof.
- 3.8. The bidder acknowledge that he/she are bidding at a live auction and agree that each bid entered (unless withdrawn before the fall of the hammer) is binding even if submitted in error. The bidder accepts full responsibility for every bid submitted through his/her online bidding account.
- 3.9. Each lot is regarded as a separate sale transaction.
- 3.10. Each lot or animal will be presented for sale at the auctioned on a Rand per Kilogram basis and bidders will enter bids reflecting prices per kilogram
- 3.11. The sale by auction is complete at the fall of the hammer or any other practice through which the Auctioneer recognizes the highest bidder as the purchaser.
- 3.12. In the event of the highest bid being tied, the earliest bid received or recognised wins.
- 3.13. The Auctioneer reserves the right to reject a registration on line, may withdraw permission for the use of the online auction service for whatsoever reason before or during the sale.

**4. Payment arrangements**

- 4.1. The final weight in kilograms of each lot or animal (as the case may be) will be established at the time the purchaser collects and take delivery thereof (the delivery weight).
- 4.2. Upon delivery and establishment of the delivery weight, the Auctioneer will provide an invoice to the purchaser reflecting the final purchase price of the specific lot or animal calculated on the successful bid price per kilogram times the delivery weight.
- 4.3. All sales are for cash and purchase price is payable by electronic funds transfer (EFT) immediately to the Auctioneer on acceptance of the bid unless the purchaser has an approved credit facility with the Auctioneer. Any payment made in cash is further subject to cash or any other handling fees. Should the Purchaser however fail to make payment within 7 days from date of delivery, BKB will be entitled to add interest calculated at the current bank prime rate plus 5% to the capital amount outstanding. The interest will be calculated monthly and capitalised.
- 4.4. Should the purchaser not pay the purchase price immediately and has failed to make arrangements for payment with the Auctioneer, then the Auctioneer can/will cancel the sale and treat the assets or lots as unsold lots which may again be presented on the auction for sale or be sold out of hand by means of liaison services, depending on the seller's mandate to the auctioneer.
- 4.5. In the event that Purchaser has made necessary finance arrangements with BKB, the Purchaser hereby authorises BKB to pay the purchase price or costs of transport, insurance and any other agreed cost, minus BKB's commissions, on behalf of the Purchaser to the Seller and other service providers, in which event the said payment by BKB on behalf of the Purchaser will be deemed to be monies lent and advanced, the terms and conditions thereof being agreed with the Purchaser in a separate credit agreement or sale agreement. All payments made by BKB to the Seller on behalf of the Purchaser in terms of this clause will be made after the lapse of 5 (Five) working days from date of delivery of the asset to the Purchaser. Any payment made by BKB to the Seller prior to the lapse of the 5 (Five) working day period is made at the sole discretion of BKB and not an enforceable indulgence.
- 4.6. In the event of payments made on behalf of the purchaser by BKB as contemplated in clause 6.5 above, the purchaser acknowledges herewith being indebted to BKB for the invoiced amount.

**5. Ownership and risk in the sold goods.**

- 5.1. Ownership in the lot or assets will remain that of the seller until the purchase price has been paid in full to the seller.
- 5.2. Risk in the lot or assets passes to the purchaser (the highest bidder) at the time of the Auctioneer notifies the purchaser of the acceptance of his/her bid

- 5.3. For as long as any amount is owing to BKB by the Purchaser, the Purchaser may not, where the assets are the subject of security of the Purchaser's credit facility with BKB, relinquish possession of the said asset, nor may he cede the asset or any of its rights and obligations in terms of this agreement to a third party or otherwise encumber, sell or dispossess the said asset or allow it to become the subject of any right of retention, hypothec, pledge or any encumbrance, whatever the cause thereof may be. BKB may be entitled to cede its rights and obligations without affecting its rights of recourse for any monies still due to it.
- 5.4. In the event of the Seller already being indebted to BKB or any of its affiliates at the time of this auction, the Seller hereby irrevocably authorises BKB to set off the purchase price due to the Seller by BKB (minus BKB's commission) against the amounts due by the Seller to BKB.
- 5.5. Where BKB, in terms of a credit agreement, lent and advanced monies to the Purchaser for payment of the purchase price of any asset or payment of any transport costs or insurance premiums, no defence of whatsoever nature which the Purchaser may raise against the Seller or the transport contractor or the insurance company may be raised against BKB and the Purchaser shall still be obligated to pay all amounts owing, together with further interest and costs thereon raised in terms of the credit agreement or sale agreement, to be BKB. The conditions of this clause do not interfere with the rights, entitlements or remedies the Purchaser may have against the Seller, transport contractor or insurance company.
- 5.6. Neither the Purchaser, nor the Seller, shall be entitled to apply set-off or to retain any monies owing arising from any claim they may have against each other or BKB with regards to any amount owing in terms hereof.

#### **6. Removal and Risk**

- 6.1. Each lot shall immediately after the date of notification by the Auctioneers to the purchaser of acceptance of his/her bid deemed to be delivered to the purchaser at the address of the seller at which time the risk will pass to the purchaser who will at his own risk and cost remove the lots or assets from the Sellers premises or auction terrain.
- 6.2. Removal of any assets or lots however will not be allowed by the Auctioneer until payment of the purchase price by the purchaser or acceptable arrangements for payment thereof have been made by the purchaser with the Auctioneer.
- 6.3. BKB will not accept liability for any loss or damage to the goods or livestock as a result of the purchasers failure to make adequate and timeous arrangements for the removal of the livestock or goods.
- 6.4. Under no circumstances will BKB be held liable for any loss or damage of any cause whatsoever albeit direct or indirect damages suffered by anyone if the livestock and/or game at the auction premises have to be placed under quarantine as a result of the presence of a livestock and/or game disease present. In such event BKB will have the right to cancel the auction as well as any already complete sales and no party will be entitled or have a right of recourse against BKB.
- 6.5. Any party requiring permits, removal certificate, documentation of identification or any other statutory prescribed document will solely be responsible for obtaining same. Any instructions to an auctioneer with regards to the loading, transporting, choice of transport contractors, insurance or choice of insurers will be executed at the sole risk of the person acquiring such services and the Auctioneer will not be held responsible for any losses whether direct or indirect which may be suffered as a result of giving affect to the instructions by the Auctioneer.
- 6.6. Any agreement entered into by the Auctioneer with a transport company or insurer is done so in its representative capacity of the seller or purchaser. All transport costs or insurance premiums are therefore payable to the Auctioneer in cash except if acceptable alternative arrangements were made with the Auctioneer

#### **7. Limitation of Liability**

- 7.1. Notwithstanding the section 43 of ECTA, under no circumstances will BKB, its affiliates or subsidiaries, or any shareholders of BKB and its subsidiaries, officers, directors, employees or agents be liable for any loss or damage caused by:
  - 7.1.1. The bidder's reliance on information obtained through either the content or the services, or
  - 7.1.2. by being exposed to information contained on the site, or
  - 7.1.3. the defamatory, offensive or illegal conduct of other users or third parties or
  - 7.1.4. the use or inability to use the website or the services or content provided from or through the website or
  - 7.1.5. any disruption in the internet connection resulting in the bidder being disconnected from the online auction for whatsoever reason or
  - 7.1.6. the failure to record a bid as a result of being disconnected or the online platform going offline during the auction process.
- 7.2. Neither BKB or any third party content provider nor their respective agents shall be liable for any direct indirect, incidental or consequential damages arising out of the use or inability to use or access the online auction site.
- 7.3. BKB makes no representation or warranties, implied or otherwise that the auction service will be uninterrupted and 100% error free. It is every users sole responsibility that the online auction site and services provided by BKB through this website will meet the user's individual requirements and be compatible with the user's hardware and software.

#### **8. General terms and conditions**

- 8.1. The Auctioneer will only be obliged to give reasons of the auction if such reasons are other than the voluntary sale of goods by its owners.
- 8.2. The bidders' roll and vendor roll will be available for registered purchasers for inspection with written notice and good reason during the normal office hours at the business premises of the Auctioneer.
- 8.3. Both the seller and the purchaser consent to the jurisdiction of the Magistrate's Court as contemplated in Section 45 of Act 32 of 1944 having regard to any action which the Auctioneer may institute against the purchaser or seller irrespective of the cause of action. Notwithstanding the aforesaid the Auctioneer will have the sole and absolute discretion to institute action in any High Court with appropriate jurisdiction.
- 8.4. Any legal costs that BKB may have or will incur as a result of the non-compliance of the Purchaser and/or Seller in terms of its or their obligations herein, shall be recoverable by BKB, together with collection commissions from the Purchaser and/or Seller on a scale as between attorney and own client.
- 8.5. No variation, amendment, novation or addition to these terms and conditions will have the effect of BKB renouncing any of its rights in terms hereof, unless it is reduced to writing and signed by BKB.
- 8.6. No relaxation or indulgence by the Auctioneer must be interpreted as a waiver of any of the Auctioneer's rights in terms hereof. Such relaxation or indulgence must also not be interpreted as a novation hereof.
- 8.7. Should any condition be unlawful or become retrospectively unlawful, that unlawful condition shall be deemed to be amended to the extent and in the manner as is necessary to make it lawful or should such amendment be impossible, the unlawful conditions shall be deemed devisable from the remainder of the conditions and pro no