

# HYDRO GROUP CC IMPLEMENT & CONSTRUCTION EQUIPMENT AUCTION

*Digital Auction Catalogue*



The Trusted Home of Agriculture  
Die Betroubare Tuiste van Landbou

**Date: Wednesday, 14 April 2021**  
**Auction starts at: 11h00**

Auction Coordinator: Dieter Schutte

Auctioneer: Appie Maritz

Equipment Enquiries: Louis Vermaak

Contact: (079) 500 7525

Contact: (082) 825 3895

Contact: (083) 286 7320



REGISTER TO BID

VIEW AUCTION  
AS GUEST

Please call or WhatsApp the following number if you  
require technical support on the Digital Auction Platform:

+27 (0)82 957 8827



The Trusted Home of Agriculture  
Die Betroubare Tuiste van Landbou

## EXECUTIVE CATALOGUE SUMMARY

<u>Lot Nr.</u>	<u>Asset Type</u>	<u>Year</u>	<u>Manufacturer</u>	<u>Model</u>	<u>Buyer No</u>	<u>Price</u>
Lot 12	MF 135 Tractor		Massey Ferguson	135		
Lot 13	John Deere Tractor	2017	John Deere	5075 E		
Lot 14	MF 165 Tractor		Massey Ferguson E	165		
Lot 15	MF 135 Tractor		Massey Ferguson	135		
Lot 16	New Holland TD90 Tractor	2011	New Holland	TD9		
Lot 17	Pro Chipper M300 Jo Beau		Pro Chipper	M300		
Lot 18	Trailer		Trailer			
Lot 19	Other Agri Equipment		Kanga	Loader 524		
Lot 25	Hino 500 1322 truck	2019	Hino	500-1322		
Lot 26	Front end Loader		Massey Ferguson	178		
Lot 27	Transportation	2002	Toyota Hilux 3.0 DE	Hilux 3.0 DE		
Lot 28	Transportation	2018	Toyota	Land Crusier LX		
Lot 29	Other Agri Equipment	2013	Catepillar	Bandit 90 XD		
Lot 30	Tractor		Massey Ferguson	188		
Lot 37	Transportation	2005	Hyundai	Tucson 2.0 SUV		
Lot 38	Tractor		Massey Ferguson	188		
Lot 39	Other Agri Equipment		Scarab Trencher	Trencher		
Lot 40	Transportation	1995	Volswagen	City Golf		
Lot 41	Transportation	2006	Hyundai	H100 2.6 D		
Lot 42	Transportation	2006	Hyundai	H100 2.6 D		
Lot 43						
Lot 44						
Lot 45						
Lot 46						
Lot 47						
Lot 48						
Lot 49						
Lot 50						
Lot 51						
Lot 53						
Lot 54						
Lot 55						
Lot 56						
Lot 57						
Lot 58						
Lot 59						
Lot 60						
Lot 61						
Lot 62						
Lot 63						
Lot 64						
Lot 65						
Lot 66						
Lot 67						
Lot 68						
Lot 69						
Lot 70						
Lot 71						
Lot 72						
Lot 73						
Lot 74						
Lot 75						
Lot 76						
Lot 77						
Lot 78						
Lot 79						
Lot 80						
Lot 81						
Lot 82						
Lot 83						
Lot 84						
Lot 85						
Lot 86						
Lot 87						
Lot 88						
Lot 89						
Lot 90						
Lot 91						
Lot 92						

**Please note: More listings to be expected.**

Lot Nr. **12**

Date **14 April 2021**

**Detail Information**

Location	Joostenbergvlakte
Year	
Manufacturer	Massey Ferguson
Model	135
Asset Type	MF 135 Tractor
Serial Number or VIN	
Condition	5 - Very Good
Hours	
Km's	
Comes with	
Notes	Tractor has been restored



**LOT 12 MASSEY FERGUSON MF 135**



**Operator Station**

Cab Type	Open Station
Transmission Detail: Speed	
Transmission Detail: Shift Type	Manual transmission
Differential Lock	Yes
Notes	



**LOT 12 MASSEY FERGUSON MF 135**



**Engine**

Fuel Type	Diesel
Manufacturer	Massey Ferguson
Model	
Notes	

**Rear Options**

Hitch Type	
PTO	Yes
Hydraulic Outlets	
Notes	Rear-Lift

**Body Details**

Size	
Type	
Notes	

**Drive Train**

Notes	
-------	--

**Weights**

Front Wheel Weights	
Back Wheel Weights	
Front Nose Weights	
Notes	



**LOT 12 MASSEY FERGUSON MF 135**



**Undercarriage/Suspension**

Tyre Manufacturer	Dunlop
Front Tyre Size	6.00-16 F2
Rear Tyre Size	RT4914.9113-14
Notes	50% Tread



**LOT 12 MASSEY FERGUSON MF 135**



**Accessories**

Other	
Extensions	

**Functionality Tests**

Start	YES
Drives Forward	YES
Drives Backwards	YES
Brake Pedal Functions	YES

**Supporting Documents**

Certificate of Registration	
Vehicle Licence Certificate	
Service Record	
Other	

Functional Test Notes

**General**

The Detailed Equipment Information is limited in scope, and BKB Auctioneers has not inspected any aspects or components of the equipment other than those expressly set forth herein. Unless expressly stated, we make no representations or warranties, express or implied, concerning the equipment or its components, including without limitation any representations or warranties concerning functionality, conformity or compliance with any safety standard or requirement of any applicable authority or regulatory body, fitness for any particular purpose, or merchantability. You are strongly advised to perform your own detailed inspection of the equipment prior to bidding.

**Functions**

The equipment is not tested under load or operated in all available gears. We make no representation or warranty that equipment is operating in accordance with manufacturers' specifications. No inspection has been performed with respect to any functionality aspect other than those expressly included herein. Only select photos have been provided for individual undercarriage components, and may not be indicative of the condition of the entire undercarriage as a whole.

**Dimensions**

Measurements are given as an estimate only. Actual loaded dimensions may vary based on truck/trailer height and the loaded machine configuration/position. It is the buyer's responsibility to measure all loads before leaving our auction site to ensure the load is safe for transport. All measurements should be verified by the buyer. DO NOT rely on these measurements for transportation purposes.





Lot Nr. **13**

Date **14 April 2021**

**Detail Information**

Location	<b>Joostenbergvlakte</b>
Year	<b>2017</b>
Manufacturer	<b>John Deere</b>
Model	<b>5075 E</b>
Asset Type	<b>John Deere Tractor</b>
Serial Number or VIN	
Condition	<b>5 - Very Good</b>
Hours	<b>908</b>
Km's	

Comes with	
Notes	

**Operator Station**

Cab Type	<b>Open Station</b>
Transmission Detail: Speed	
Transmission Detail: Shift Type	<b>Manual transmission</b>
Differential Lock	<b>Yes</b>
Notes	

**Engine**

Fuel Type	<b>Diesel</b>
Manufacturer	<b>John Deere</b>
Model	
Notes	

**Rear Options**

Hitch Type	
PTO	<b>Yes</b>
Hydraulic Outlets	<b>Yes</b>
Notes	

**Body Details**

Size	
Type	
Notes	

**Drive Train**

Notes	
-------	--

**Weights**

Front Wheel Weights	
Back Wheel Weights	
Front Nose Weights	<b>Yes</b>
Notes	

**Undercarriage/Suspension**

Tyre Manufacturer	<b>BKT</b>
Front Tyre Size	<b>BKT TR-135</b>
Rear Tyre Size	<b>TR136.16.9-30</b>
Notes	<b>90% Tread</b>

**Accessories**

Other	
Extensions	

**Functionality Tests**

Start	<b>YES</b>
Drives Forward	<b>YES</b>
Drives Backwards	<b>YES</b>
Brake Pedal Functions	<b>YES</b>

Functional Test Notes

**Supporting Documents**

Certificate of Registration	
Vehicle Licence Certificate	
Service Record	<b>YES</b>
Other	



**General**

The Detailed Equipment Information is limited in scope, and BKB Auctioneers has not inspected any aspects or components of the equipment other than those expressly set forth herein. Unless expressly stated, we make no representations or warranties, express or implied, concerning the equipment or its components, including without limitation any representations or warranties concerning functionality, conformity or compliance with any safety standard or requirement of any applicable authority or regulatory body, fitness for any particular purpose, or merchantability. You are strongly advised to perform your own detailed inspection of the equipment prior to bidding.

**Functions**

The Equipment is not tested under load or operated in all available gears. We make no representation or warranty that equipment is operating in accordance with manufacturers' specifications. No inspection has been performed with respect to any functionality aspect other than those expressly included herein. Only select photos have been provided for individual undercarriage components, and may not be indicative of the condition of the entire undercarriage as a whole.

**Dimensions**

Measurements are given as an estimate only. Actual loaded dimensions may vary based on truck/trailer height and the loaded machine configuration/position. It is the buyer's responsibility to measure all loads before leaving our auction site to ensure the load is safe for transport. All measurements should be verified by the buyer. DO NOT rely on these measurements for transportation purposes.





Lot Nr.

14

Date

14 April 2021

**Detail Information**

Location	Joostenbergvlakte
Year	
Manufacturer	Massey Ferguson E
Model	165
Asset Type	MF 165 Tractor
Serial Number or VIN	
Condition	5 - Very Good
Hours	
Km's	
Comes with	
Notes	Tractor has been restored



**LOT 14 MASSEY FERGUSON 165**

**Operator Station**

Cab Type	Open Station
Transmission Detail: Speed	
Transmission Detail: Shift Type	Manual transmission
Differential Lock	Yes
Notes	

**Engine**

Fuel Type	Diesel
Manufacturer	Massey Ferguson
Model	
Notes	



**LOT 14 MASSEY FERGUSON 165**

**Rear Options**

Hitch Type	
PTO	Yes
Hydraulic Outlets	
Notes	Rear-Lift



**LOT 14 MASSEY FERGUSON 165**

**Body Details**

Size	
Type	
Notes	

**Drive Train**

Notes	
-------	--

**Weights**

Front Wheel Weights	
Back Wheel Weights	
Front Nose Weights	
Notes	

**Undercarriage/Suspension**

Tyre Manufacturer	Fireston
Front Tyre Size	7.50-16
Rear Tyre Size	16.9-26
Notes	70% Tread



**LOT 14 MASSEY FERGUSON 165**

**Accessories**

Other	
Extensions	

**Functionality Tests**

Start	YES
Drives Forward	YES
Drives Backwards	YES
Brake Pedal Functions	YES

**Supporting Documents**

Certificate of Registration	
Vehicle Licence Certificate	
Service Record	
Other	

Functional Test Notes

**General**

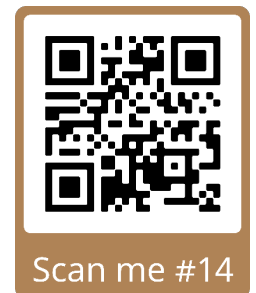
The Detailed Equipment Information is limited in scope, and BKB Auctioneers has not inspected any aspects or components of the equipment other than those expressly set forth herein. Unless expressly stated, we make no representations or warranties, express or implied, concerning the equipment or its components, including without limitation any representations or warranties concerning functionality, conformity or compliance with any safety standard or requirement of any applicable authority or regulatory body, fitness for any particular purpose, or merchantability. You are strongly advised to perform your own detailed inspection of the equipment prior to bidding.

**Functions**

The equipment is not tested under load or operated in all available gears. We make no representation or warranty that equipment is operating in accordance with manufacturers' specifications. No inspection has been performed with respect to any functionality aspect other than those expressly included herein. Only select photos have been provided for individual undercarriage components, and may not be indicative of the condition of the entire undercarriage as a whole.

**Dimensions**

Measurements are given as an estimate only. Actual loaded dimensions may vary based on truck/trailer height and the loaded machine configuration/position. It is the buyer's responsibility to measure all loads before leaving our auction site to ensure the load is safe for transport. All measurements should be verified by the buyer. DO NOT rely on these measurements for transportation purposes.



Lot Nr.

15

Date

14 April 2021

**Detail Information**

Location	Joostenbergvlakte
Year	
Manufacturer	Massey Ferguson
Model	135
Asset Type	MF 135 Tractor
Serial Number or VIN	
Condition	5 - Very Good
Hours	
Km's	
Comes with	
Notes	Tractor has been restored

**Operator Station**

Cab Type	Open Station
Transmission Detail: Speed	
Transmission Detail: Shift Type	
Differential Lock	Yes
Notes	

**Engine**

Fuel Type	Diesel
Manufacturer	Massey Ferguson
Model	
Notes	

**Rear Options**

Hitch Type	
PTO	Yes
Hydraulic Outlets	
Notes	Rear-Lift

**Body Details**

Size	
Type	
Notes	

**Drive Train**

Notes	
-------	--

**Weights**

Front Wheel Weights	
Back Wheel Weights	
Front Nose Weights	
Notes	

**Undercarriage/Suspension**

Tyre Manufacturer	Dunlop
Front Tyre Size	18
Rear Tyre Size	RT49
Notes	50% Tread

**Accessories**

Other	
Extensions	

**Functionality Tests**

Start	YES
Drives Forward	YES
Drives Backwards	YES
Brake Pedal Functions	YES

Functional Test Notes

--

**General**

The Detailed Equipment Information is limited in scope, and BKB Auctioneers has not inspected any aspects or components of the equipment other than those expressly set forth herein. Unless expressly stated, we make no representations or warranties, express or implied, concerning the equipment or its components, including without limitation any representations or warranties concerning functionality, conformity or compliance with any safety standard or requirement of any applicable authority or regulatory body, fitness for any particular purpose, or merchantability. You are strongly advised to perform your own detailed inspection of the equipment prior to bidding.

**Functions**

The Equipment is not tested under load or operated in all available gears. We make no representation or warranty that equipment is operating in accordance with manufacturers' specifications. No inspection has been performed with respect to any functionality aspect other than those expressly included herein. Only select photos have been provided for individual undercarriage components, and may not be indicative of the condition of the entire undercarriage as a whole.

**Dimensions**

Measurements are given as an estimate only. Actual loaded dimensions may vary based on truck/trailer height and the loaded machine configuration/position. It is the buyer's responsibility to measure all loads before leaving our auction site to ensure the load is safe for transport. All measurements should be verified by the buyer. DO NOT rely on these measurements for transportation purposes.



**LOT 15 MASSEY FERGUSON 135**



**LOT 15 MASSEY FERGUSON 135**



**LOT 15 MASSEY FERGUSON 135**



**LOT 15 MASSEY FERGUSON 135**



**Supporting Documents**

Certificate of Registration	
Vehicle Licence Certificate	
Service Record	
Other	





Lot Nr. **16**

Date **14 April 2021**

**Detail Information**

Location	<b>Joostenbergvlakte</b>
Year	<b>2011</b>
Manufacturer	<b>New Holland</b>
Model	<b>TD9</b>
Asset Type	<b>New Holland TD90 Tractor</b>
Serial Number or VIN	
Condition	<b>5 - Very Good</b>
Hours	<b>1510</b>
Km's	
Comes with	
Notes	



**LOT 16 NEW HOLLAND TD90** 

**Operator Station**

Cab Type	<b>Open Station</b>
Transmission Detail: Speed	
Transmission Detail: Shift Type	<b>Manual transmission</b>
Differential Lock	<b>Yes</b>
Notes	



**LOT 16 NEW HOLLAND TD90**  **LOT 16 NEW HOLLAND TD90** 

**Engine**

Fuel Type	<b>Diesel</b>
Manufacturer	<b>New Holland</b>
Model	
Notes	

**Rear Options**

Hitch Type	
PTO	<b>Yes</b>
Hydraulic Outlets	<b>Yes</b>
Notes	



**LOT 16 NEW HOLLAND TD90**  **LOT 16 NEW HOLLAND TD90** 

**Body Details**

Size	
Type	
Notes	

**Drive Train**

Notes	
-------	--

**Weights**

Front Wheel Weights	
Back Wheel Weights	
Front Nose Weights	<b>Yes</b>
Notes	



**LOT 16 NEW HOLLAND TD90** 

**Undercarriage/Suspension**

Tyre Manufacturer	<b>Michelin</b>
Front Tyre Size	<b>13.6 R24</b>
Rear Tyre Size	<b>420/85/R34</b>
Notes	<b>80% Tread</b>

**Accessories**

Other	
Extensions	

**Functionality Tests**

Start	<b>YES</b>
Drives Forward	<b>YES</b>
Drives Backwards	<b>YES</b>
Brake Pedal Functions	<b>YES</b>

**Supporting Documents**

Certificate of Registration	
Vehicle Licence Certificate	
Service Record	
Other	

Functional Test Notes

**General**

The Detailed Equipment Information is limited in scope, and BKB Auctioneers has not inspected any aspects or components of the equipment other than those expressly set forth herein. Unless expressly stated, we make no representations or warranties, express or implied, concerning the equipment or its components, including without limitation any representations or warranties concerning functionality, conformity or compliance with any safety standard or requirement of any applicable authority or regulatory body, fitness for any particular purpose, or merchantability. You are strongly advised to perform your own detailed inspection of the equipment prior to bidding.

**Functions**

The equipment is not tested under load or operated in all available gears. We make no representation or warranty that equipment is operating in accordance with manufacturers' specifications. No inspection has been performed with respect to any functionality aspect other than those expressly included herein. Only select photos have been provided for individual undercarriage components, and may not be indicative of the condition of the entire undercarriage as a whole.

**Dimensions**

Measurements are given as an estimate only. Actual loaded dimensions may vary based on truck/trailer height and the loaded machine configuration/position. It is the buyer's responsibility to measure all loads before leaving our auction site to ensure the load is safe for transport. All measurements should be verified by the buyer. DO NOT rely on these measurements for transportation purposes.





Lot Nr.

17

Date

14 April 2021

**Detail Information**

Location	Joostenbergvlakte
Year	
Manufacturer	Pro Chipper
Model	M300
Asset Type	Pro Chipper M300 Jo Beau
Serial Number or VIN	
Condition	4 - Good
Hours	
Km's	
Comes with	
Notes	uses to chop wood



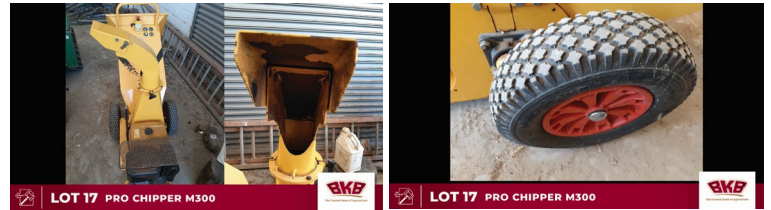
**LOT 17 PRO CHIPPER M300** 

**Operator Station**

Cab Type	
Transmission Detail: Speed	
Transmission Detail: Shift Type	
Differential Lock	
Notes	

**Engine**

Fuel Type	Diesel
Manufacturer	Subaru
Model	
Notes	



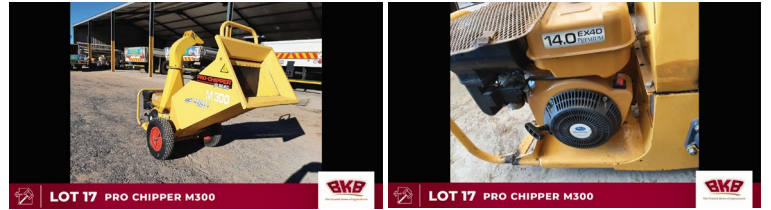
**LOT 17 PRO CHIPPER M300**  **LOT 17 PRO CHIPPER M300** 

**Rear Options**

Hitch Type	
PTO	
Hydraulic Outlets	
Notes	

**Body Details**

Size	
Type	
Notes	



**LOT 17 PRO CHIPPER M300**  **LOT 17 PRO CHIPPER M300** 

**Drive Train**

Notes	
-------	--

**Weights**

Front Wheel Weights	
Back Wheel Weights	
Front Nose Weights	
Notes	

**Undercarriage/Suspension**

Tyre Manufacturer	
Front Tyre Size	
Rear Tyre Size	
Notes	

**Accessories**

Other	
Extensions	

**Functionality Tests**

Start	YES
Drives Forward	
Drives Backwards	
Brake Pedal Functions	

**Supporting Documents**

Certificate of Registration	
Vehicle Licence Certificate	
Service Record	
Other	

Functional Test Notes

**General**

The Detailed Equipment Information is limited in scope, and BKB Auctioneers has not inspected any aspects or components of the equipment other than those expressly set forth herein. Unless expressly stated, we make no representations or warranties, express or implied, concerning the equipment or its components, including without limitation any representations or warranties concerning functionality, conformity or compliance with any safety standard or requirement of any applicable authority or regulatory body, fitness for any particular purpose, or merchantability. You are strongly advised to perform your own detailed inspection of the equipment prior to bidding.

**Functions**

The equipment is not tested under load or operated in all available gears. We make no representation or warranty that equipment is operating in accordance with manufacturers' specifications. No inspection has been performed with respect to any functionality aspect other than those expressly included herein. Only select photos have been provided for individual undercarriage components, and may not be indicative of the condition of the entire undercarriage as a whole.

**Dimensions**

Measurements are given as an estimate only. Actual loaded dimensions may vary based on truck/trailer height and the loaded machine configuration/position. It is the buyer's responsibility to measure all loads before leaving our auction site to ensure the load is safe for transport. All measurements should be verified by the buyer. DO NOT rely on these measurements for transportation purposes.



Lot Nr.

18

Date

14 April 2021

Detail Information

Location	Joostenbergvlakte
Year	
Manufacturer	Trailer
Model	
Asset Type	Trailer
Serial Number or VIN	
Condition	3 - Fair
Hours	
Km's	
Comes with	
Notes	



 **LOT 18 FARM TRAILER** 

Operator Station

Cab Type	
Transmission Detail: Speed	
Transmission Detail: Shift Type	
Differential Lock	
Notes	

Engine

Fuel Type	
Manufacturer	
Model	
Notes	

Rear Options

Hitch Type	
PTO	
Hydraulic Outlets	
Notes	

Body Details

Size	
Type	
Notes	



 **LOT 18 FARM TRAILER** 

Drive Train

Notes	
-------	--

Weights

Front Wheel Weights	
Back Wheel Weights	
Front Nose Weights	
Notes	



 **LOT 18 FARM TRAILER**   **LOT 18 FARM TRAILER** 

Undercarriage/Suspension

Tyre Manufacturer	General
Front Tyre Size	
Rear Tyre Size	9.00-16 TR
Notes	50% Tread

Accessories

Other	
Extensions	

Functionality Tests

Start	
Drives Forward	
Drives Backwards	
Brake Pedal Functions	

Supporting Documents

Certificate of Registration	YES
Vehicle Licence Certificate	
Service Record	
Other	

Functional Test Notes

General

The Detailed Equipment Information is limited in scope, and BKB Auctioneers has not inspected any aspects or components of the equipment other than those expressly set forth herein. Unless expressly stated, we make no representations or warranties, express or implied, concerning the equipment or its components, including without limitation any representations or warranties concerning functionality, conformity or compliance with any safety standard or requirement of any applicable authority or regulatory body, fitness for any particular purpose, or merchantability. You are strongly advised to perform your own detailed inspection of the equipment prior to bidding.

Functions

The Equipment is not tested under load or operated in all available gears. We make no representation or warranty that equipment is operating in accordance with manufacturers' specifications. No inspection has been performed with respect to any functionality aspect other than those expressly included herein. Only select photos have been provided for individual undercarriage components, and may not be indicative of the condition of the entire undercarriage as a whole.

Dimensions

Measurements are given as an estimate only. Actual loaded dimensions may vary based on truck/trailer height and the loaded machine configuration/position. It is the buyer's responsibility to measure all loads before leaving our auction site to ensure the load is safe for transport. All measurements should be verified by the buyer. DO NOT rely on these measurements for transportation purposes.



Lot Nr. **19**

Date **14 April 2021**

**Detail Information**

Location	Joostenbergvlakte
Year	
Manufacturer	Kanga
Model	Loader 524
Asset Type	Other Agri Equipment
Serial Number or VIN	
Condition	
Hours	1200
Km's	
Comes with	
Notes	900cm depth, 800cm width working



**LOT 19 KANGA LOADER 524 TRENCHER**



**Operator Station**

Cab Type	
Transmission Detail: Speed	Manual transmission
Transmission Detail: Shift Type	
Differential Lock	
Notes	

**Engine**

Fuel Type	Petrol
Manufacturer	Rato
Model	670
Notes	

**Rear Options**

Hitch Type	
PTO	
Hydraulic Outlets	
Notes	

**Body Details**

Size	
Type	
Notes	



**LOT 19 KANGA LOADER 524 TRENCHER**

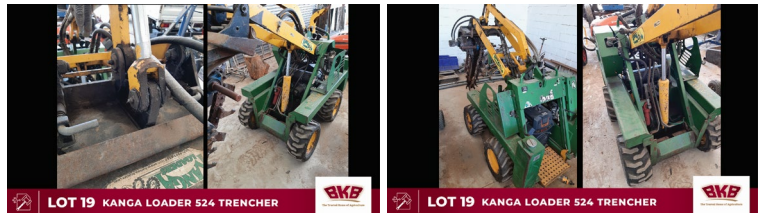


**Drive Train**

Notes	
-------	--

**Weights**

Front Wheel Weights	
Back Wheel Weights	
Front Nose Weights	
Notes	



**LOT 19 KANGA LOADER 524 TRENCHER**



**Undercarriage/Suspension**

Tyre Manufacturer	
Front Tyre Size	
Rear Tyre Size	
Notes	60% Tread

**Accessories**

Other Extensions	
------------------	--

**Functionality Tests**

Start	YES
Drives Forward	YES
Drives Backwards	YES
Brake Pedal Functions	

**Supporting Documents**

Certificate of Registration	
Vehicle Licence Certificate	
Service Record	
Other	

Functional Test Notes

**General**

The Detailed Equipment Information is limited in scope, and BKB Auctioneers has not inspected any aspects or components of the equipment other than those expressly set forth herein. Unless expressly stated, we make no representations or warranties, express or implied, concerning the equipment or its components, including without limitation any representations or warranties concerning functionality, conformity or compliance with any safety standard or requirement of any applicable authority or regulatory body, fitness for any particular purpose, or merchantability. You are strongly advised to perform your own detailed inspection of the equipment prior to bidding.

**Functions**

The Equipment is not tested under load or operated in all available gears. We make no representation or warranty that equipment is operating in accordance with manufacturers' specifications. No inspection has been performed with respect to any functionality aspect other than those expressly included herein. Only select photos have been provided for individual undercarriage components, and may not be indicative of the condition of the entire undercarriage as a whole.

**Dimensions**

Measurements are given as an estimate only. Actual loaded dimensions may vary based on truck/trailer height and the loaded machine configuration/position. It is the buyer's responsibility to measure all loads before leaving our auction site to ensure the load is safe for transport. All measurements should be verified by the buyer. DO NOT rely on these measurements for transportation purposes.



Scan me #19



Lot Nr.

25

Date

14 April 2021

**Detail Information**

Location	Joostenbergvlakte
Year	2019
Manufacturer	Hino
Model	500-1322
Asset Type	Hino 500 1322 truck
Serial Number or VIN	
Condition	
Hours	
Km's	
Comes with	Bowman BC 120 Crane
Notes	



**LOT 25 HINO 500 B22 TRUCK**

**Operator Station**

Cab Type	Closed
Transmission Detail: Speed	
Transmission Detail: Shift Type	Manual transmission
Differential Lock	Yes
Notes	

**Engine**

Fuel Type	Diesel
Manufacturer	Toyota 4x4, low range
Model	2019
Notes	



**LOT 25 HINO 500 B22 TRUCK**

**LOT 25 HINO 500 B22 TRUCK**

**Rear Options**

Hitch Type	
PTO	
Hydraulic Outlets	
Notes	



**LOT 25 HINO 500 B22 TRUCK**

**LOT 25 HINO 500 B22 TRUCK**

**Body Details**

Size	
Type	
Notes	

**Drive Train**

Notes	
-------	--



**LOT 25 HINO 500 B22 TRUCK**

**LOT 25 HINO 500 B22 TRUCK**

**Weights**

Front Wheel Weights	
Back Wheel Weights	
Front Nose Weights	
Notes	

**Undercarriage/Suspension**

Tyre Manufacturer	Dunlop SP571
Front Tyre Size	12.00 R20
Rear Tyre Size	12.00 R21
Notes	90% Tread



**LOT 25 HINO 500 B22 TRUCK**

**Accessories**

Other	
Extensions	

**Functionality Tests**

Start	YES
Drives Forward	YES
Drives Backwards	YES
Brake Pedal Functions	YES

**Supporting Documents**

Certificate of Registration	YES
Vehicle Licence Certificate	YES
Service Record	YES
Other	

Functional Test Notes

**General**

The Detailed Equipment Information is limited in scope, and BKB Auctioneers has not inspected any aspects or components of the equipment other than those expressly set forth herein. Unless expressly stated, we make no representations or warranties, express or implied, concerning the equipment or its components, including without limitation any representations or warranties concerning functionality, conformity or compliance with any safety standard or requirement of any applicable authority or regulatory body, fitness for any particular purpose, or merchantability. You are strongly advised to perform your own detailed inspection of the equipment prior to bidding.

**Functions**

The equipment is not tested under load or operated in all available gears. We make no representation or warranty that equipment is operating in accordance with manufacturers' specifications. No inspection has been performed with respect to any functionality aspect other than those expressly included herein. Only select photos have been provided for individual undercarriage components, and may not be indicative of the condition of the entire undercarriage as a whole.

**Dimensions**

Measurements are given as an estimate only. Actual loaded dimensions may vary based on truck/trailer height and the loaded machine configuration/position. It is the buyer's responsibility to measure all loads before leaving our auction site to ensure the load is safe for transport. All measurements should be verified by the buyer. DO NOT rely on these measurements for transportation purposes.



Scan me #25

Lot Nr.

26

Date

14 April 2021

**Detail Information**

Location	Joostenbergvlakte
Year	
Manufacturer	Massey Ferguson
Model	178
Asset Type	Front end Loader
Serial Number or VIN	
Condition	4 - Good
Hours	
Km's	

Comes with	
Notes	

**Operator Station**

Cab Type	Open
Transmission Detail: Speed	
Transmission Detail: Shift Type	Manual transmission
Differential Lock	Yes
Notes	

**Engine**

Fuel Type	Diesel
Manufacturer	Massey ferguson
Model	
Notes	

**Rear Options**

Hitch Type	
PTO	Yes
Hydraulic Outlets	
Notes	Rear-Lift

**Body Details**

Size	
Type	
Notes	

**Drive Train**

Notes	
-------	--

**Weights**

Front Wheel Weights	
Back Wheel Weights	
Front Nose Weights	
Notes	

**Undercarriage/Suspension**

Tyre Manufacturer	Firestone
Front Tyre Size	7.50-16
Rear Tyre Size	8.4-38
Notes	60% Tread

**Accessories**

Other	
Extensions	

**Functionality Tests**

Start	YES
Drives Forward	YES
Drives Backwards	YES
Brake Pedal Functions	YES

Functional Test Notes	front loader works well
-----------------------	-------------------------

**Supporting Documents**

Certificate of Registration	
Vehicle Licence Certificate	
Service Record	
Other	



**General**

The Detailed Equipment Information is limited in scope, and BKB Auctioneers has not inspected any aspects or components of the equipment other than those expressly set forth herein. Unless expressly stated, we make no representations or warranties, express or implied, concerning the equipment or its components, including without limitation any representations or warranties concerning functionality, conformity or compliance with any safety standard or requirement of any applicable authority or regulatory body, fitness for any particular purpose, or merchantability. You are strongly advised to perform your own detailed inspection of the equipment prior to bidding.

**Functions**

The Equipment is not tested under load or operated in all available gears. We make no representation or warranty that equipment is operating in accordance with manufacturers' specifications. No inspection has been performed with respect to any functionality aspect other than those expressly included herein. Only select photos have been provided for individual undercarriage components, and may not be indicative of the condition of the entire undercarriage as a whole.

**Dimensions**

Measurements are given as an estimate only. Actual loaded dimensions may vary based on truck/trailer height and the loaded machine configuration/position. It is the buyer's responsibility to measure all loads before leaving our auction site to ensure the load is safe for transport. All measurements should be verified by the buyer. DO NOT rely on these measurements for transportation purposes.





Lot Nr.

27

Date

14 April 2021

**Detail Information**

Location	Joostenbergvlakte
Year	2002
Manufacturer	Toyota Hilux 3.0 DE
Model	Hilux 3.0 DE
Asset Type	Transportation
Serial Number or VIN	
Condition	3 - Fair
Hours	
Km's	
Comes with	Half cab canopy
Notes	



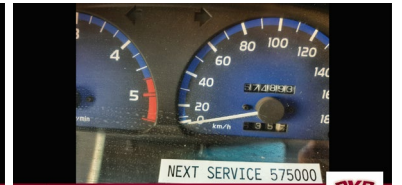
**LOT 27 TOYOTA HILUX 3.0 D** 

**Operator Station**

Cab Type	Closed/Single Cab
Transmission Detail: Speed	
Transmission Detail: Shift Type	Manual transmission
Differential Lock	
Notes	



**LOT 27 TOYOTA HILUX 3.0 D** 



**LOT 27 TOYOTA HILUX 3.0 D** 

**Engine**

Fuel Type	Diesel
Manufacturer	Toyota
Model	3.0 DE
Notes	

**Rear Options**

Hitch Type	
PTO	
Hydraulic Outlets	
Notes	



**LOT 27 TOYOTA HILUX 3.0 D** 



**LOT 27 TOYOTA HILUX 3.0 D** 

**Body Details**

Size	
Type	
Notes	

**Drive Train**

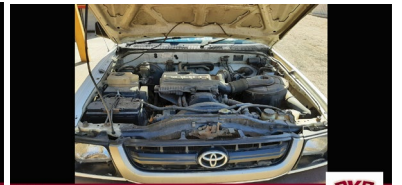
Notes	
-------	--

**Weights**

Front Wheel Weights	
Back Wheel Weights	
Front Nose Weights	
Notes	



**LOT 27 TOYOTA HILUX 3.0 D** 



**LOT 27 TOYOTA HILUX 3.0 D** 

**Undercarriage/Suspension**

Tyre Manufacturer	Firestone
Front Tyre Size	215 R15
Rear Tyre Size	216 R15
Notes	70% Tread



**LOT 27 TOYOTA HILUX 3.0 D** 

**Accessories**

Other	
Extensions	

**Functionality Tests**

Start	YES
Drives Forward	YES
Drives Backwards	YES
Brake Pedal Functions	YES

**Supporting Documents**

Certificate of Registration	YES
Vehicle Licence Certificate	YES
Service Record	YES
Other	

Functional Test Notes

--

**General**

The Detailed Equipment Information is limited in scope, and BKB Auctioneers has not inspected any aspects or components of the equipment other than those expressly set forth herein. Unless expressly stated, we make no representations or warranties, express or implied, concerning the equipment or its components, including without limitation any representations or warranties concerning functionality, conformity or compliance with any safety standard or requirement of any applicable authority or regulatory body, fitness for any particular purpose, or merchantability. You are strongly advised to perform your own detailed inspection of the equipment prior to bidding.

**Functions**

The equipment is not tested under load or operated in all available gears. We make no representation or warranty that equipment is operating in accordance with manufacturers' specifications. No inspection has been performed with respect to any functionality aspect other than those expressly included herein. Only select photos have been provided for individual undercarriage components, and may not be indicative of the condition of the entire undercarriage as a whole.

**Dimensions**

Measurements are given as an estimate only. Actual loaded dimensions may vary based on truck/trailer height and the loaded machine configuration/position. It is the buyer's responsibility to measure all loads before leaving our auction site to ensure the load is safe for transport. All measurements should be verified by the buyer. DO NOT rely on these measurements for transportation purposes.





Lot Nr. **28**

Date **14 April 2021**

**Detail Information**

Location	<b>Joostenbergvlakte</b>
Year	<b>2018</b>
Manufacturer	<b>Toyota</b>
Model	<b>Land Cruiser LX</b>
Asset Type	<b>Transportation</b>
Serial Number or VIN	
Condition	<b>5 - Very Good</b>
Hours	
Km's	<b>67000</b>
Comes with	<b>Cattle rails, Bull bar, Snorkel</b>
Notes	



**LOT 28 2018 TOYOTA LAND CRUISER LX** 

**Operator Station**

Cab Type	<b>Single Cab</b>
Transmission Detail: Speed	<b>4x4</b>
Transmission Detail: Shift Type	<b>Manual transmission</b>
Differential Lock	<b>Yes</b>
Notes	

**Engine**

Fuel Type	<b>Diesel</b>
Manufacturer	<b>Toyota</b>
Model	<b>V8</b>
Notes	

**Rear Options**

Hitch Type	<b>Toyota Hitch</b>
PTO	
Hydraulic Outlets	
Notes	<b>Ball &amp; Pen</b>

**Body Details**

Size	
Type	
Notes	

**Drive Train**

Notes	
-------	--

**Weights**

Front Wheel Weights	
Back Wheel Weights	
Front Nose Weights	
Notes	

**Undercarriage/Suspension**

Tyre Manufacturer	<b>Goodride</b>
Front Tyre Size	
Rear Tyre Size	<b>LT245/75 R16</b>
Notes	<b>80% Tread</b>

**Accessories**

Other	
Extensions	

**Functionality Tests**

Start	<b>YES</b>
Drives Forward	
Drives Backwards	
Brake Pedal Functions	

Functional Test Notes

**Supporting Documents**

Certificate of Registration	<b>YES</b>
Vehicle Licence Certificate	<b>YES</b>
Service Record	<b>YES</b>
Other	



**LOT 28 2018 TOYOTA LAND CRUISER LX** 



**LOT 28 2018 TOYOTA LAND CRUISER LX** 



**LOT 28 2018 TOYOTA LAND CRUISER LX** 



**LOT 28 2018 TOYOTA LAND CRUISER LX** 



**LOT 28 2018 TOYOTA LAND CRUISER LX** 



**General**

The Detailed Equipment Information is limited in scope, and BKB Auctioneers has not inspected any aspects or components of the equipment other than those expressly set forth herein. Unless expressly stated, we make no representations or warranties, express or implied, concerning the equipment or its components, including without limitation any representations or warranties concerning functionality, conformity or compliance with any safety standard or requirement of any applicable authority or regulatory body, fitness for any particular purpose, or merchantability. You are strongly advised to perform your own detailed inspection of the equipment prior to bidding.

**Functions**

The Equipment is not tested under load or operated in all available gears. We make no representation or warranty that equipment is operating in accordance with manufacturers' specifications. No inspection has been performed with respect to any functionality aspect other than those expressly included herein. Only select photos have been provided for individual undercarriage components, and may not be indicative of the condition of the entire undercarriage as a whole.

**Dimensions**

Measurements are given as an estimate only. Actual loaded dimensions may vary based on truck/trailer height and the loaded machine configuration/position. It is the buyer's responsibility to measure all loads before leaving our auction site to ensure the load is safe for transport. All measurements should be verified by the buyer. DO NOT rely on these measurements for transportation purposes.



Lot Nr.

29

Date

14 April 2021

**Detail Information**

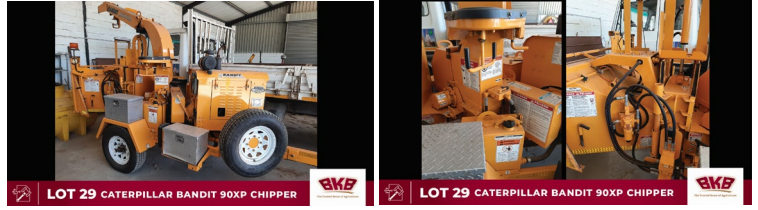
Location	Joostenbergvlakte
Year	2013
Manufacturer	Catepillar
Model	Bandit 90 XD
Asset Type	Other Agri Equipment
Serial Number or VIN	
Condition	4 - Good
Hours	
Km's	
Comes with	
Notes	



**LOT 29 CATERPILLAR BANDIT 90XP CHIPPER** 

**Operator Station**

Cab Type	
Transmission Detail: Speed	
Transmission Detail: Shift Type	
Differential Lock	
Notes	



**LOT 29 CATERPILLAR BANDIT 90XP CHIPPER**  **LOT 29 CATERPILLAR BANDIT 90XP CHIPPER** 

**Engine**

Fuel Type	Petrol
Manufacturer	
Model	
Notes	

**Rear Options**

Hitch Type	
PTO	
Hydraulic Outlets	
Notes	



**LOT 29 CATERPILLAR BANDIT 90XP CHIPPER**  **LOT 29 CATERPILLAR BANDIT 90XP CHIPPER** 

**Body Details**

Size	
Type	
Notes	

**Drive Train**

Notes	
-------	--



**LOT 29 CATERPILLAR BANDIT 90XP CHIPPER**  **LOT 29 CATERPILLAR BANDIT 90XP CHIPPER** 

**Weights**

Front Wheel Weights	
Back Wheel Weights	
Front Nose Weights	
Notes	

**Undercarriage/Suspension**

Tyre Manufacturer	Goodride
Front Tyre Size	
Rear Tyre Size	LT245/75 R16
Notes	80% Tread



**LOT 29 CATERPILLAR BANDIT 90XP CHIPPER** 

**Accessories**

Other	
Extensions	

**Functionality Tests**

Start	YES
Drives Forward	
Drives Backwards	
Brake Pedal Functions	

**Supporting Documents**

Certificate of Registration	YES
Vehicle Licence Certificate	YES
Service Record	
Other	

Functional Test Notes

**General**

The Detailed Equipment Information is limited in scope, and BKB Auctioneers has not inspected any aspects or components of the equipment other than those expressly set forth herein. Unless expressly stated, we make no representations or warranties, express or implied, concerning the equipment or its components, including without limitation any representations or warranties concerning functionality, conformity or compliance with any safety standard or requirement of any applicable authority or regulatory body, fitness for any particular purpose, or merchantability. You are strongly advised to perform your own detailed inspection of the equipment prior to bidding.

**Functions**

The Equipment is not tested under load or operated in all available gears. We make no representation or warranty that equipment is operating in accordance with manufacturers' specifications. No inspection has been performed with respect to any functionality aspect other than those expressly included herein. Only select photos have been provided for individual undercarriage components, and may not be indicative of the condition of the entire undercarriage as a whole.

**Dimensions**

Measurements are given as an estimate only. Actual loaded dimensions may vary based on truck/trailer height and the loaded machine configuration/position. It is the buyer's responsibility to measure all loads before leaving our auction site to ensure the load is safe for transport. All measurements should be verified by the buyer. DO NOT rely on these measurements for transportation purposes.





Lot Nr.

30

Date

14 April 2021

**Detail Information**

Location	Joostenbergvlakte
Year	
Manufacturer	Massey Ferguson
Model	188
Asset Type	Tractor
Serial Number or VIN	
Condition	4 - Good
Hours	
Km's	
Comes with	
Notes	



**Operator Station**

Cab Type	Open
Transmission Detail: Speed	
Transmission Detail: Shift Type	Manual transmission
Differential Lock	Yes
Notes	



**Engine**

Fuel Type	Diesel
Manufacturer	
Model	
Notes	

**Rear Options**

Hitch Type	
PTO	Yes
Hydraulic Outlets	
Notes	Rear-Lift



**Body Details**

Size	
Type	
Notes	

**Drive Train**

Notes	
-------	--

**Weights**

Front Wheel Weights	
Back Wheel Weights	
Front Nose Weights	
Notes	

**Undercarriage/Suspension**

Tyre Manufacturer	Kumbo/Fireston
Front Tyre Size	7.50 - 1 HT
Rear Tyre Size	184-34
Notes	40% Tread



**Accessories**

Other	
Extensions	

**Functionality Tests**

Start	YES
Drives Forward	YES
Drives Backwards	YES
Brake Pedal Functions	YES

**Supporting Documents**

Certificate of Registration	
Vehicle Licence Certificate	
Service Record	
Other	

Functional Test Notes

**General**

The Detailed Equipment Information is limited in scope, and BKB Auctioneers has not inspected any aspects or components of the equipment other than those expressly set forth herein. Unless expressly stated, we make no representations or warranties, express or implied, concerning the equipment or its components, including without limitation any representations or warranties concerning functionality, conformity or compliance with any safety standard or requirement of any applicable authority or regulatory body, fitness for any particular purpose, or merchantability. You are strongly advised to perform your own detailed inspection of the equipment prior to bidding.

**Functions**

The Equipment is not tested under load or operated in all available gears. We make no representation or warranty that equipment is operating in accordance with manufacturers' specifications. No inspection has been performed with respect to any functionality aspect other than those expressly included herein. Only select photos have been provided for individual undercarriage components, and may not be indicative of the condition of the entire undercarriage as a whole.

**Dimensions**

Measurements are given as an estimate only. Actual loaded dimensions may vary based on truck/trailer height and the loaded machine configuration/position. It is the buyer's responsibility to measure all loads before leaving our auction site to ensure the load is safe for transport. All measurements should be verified by the buyer. DO NOT rely on these measurements for transportation purposes.





Lot Nr. **37**

Date **14 April 2021**

**Detail Information**

Location	<b>Joostenbergvlakte</b>
Year	<b>2005</b>
Manufacturer	<b>Hyundai</b>
Model	<b>Tucson 2.0 SUV</b>
Asset Type	<b>Transportation</b>
Serial Number or VIN	
Condition	<b>4 - Good</b>
Hours	
Km's	

Comes with	
Notes	

**Operator Station**

Cab Type	<b>SUV</b>
Transmission Detail: Speed	
Transmission Detail: Shift Type	<b>Automatic</b>
Differential Lock	
Notes	

**Engine**

Fuel Type	
Manufacturer	
Model	
Notes	

**Rear Options**

Hitch Type	
PTO	
Hydraulic Outlets	
Notes	

**Body Details**

Size	
Type	
Notes	

**Drive Train**

Notes	
-------	--

**Weights**

Front Wheel Weights	
Back Wheel Weights	
Front Nose Weights	
Notes	

**Undercarriage/Suspension**

Tyre Manufacturer	<b>Kmho KH27</b>
Front Tyre Size	<b>235/60 R16</b>
Rear Tyre Size	<b>235/60 R17</b>
Notes	<b>70% Tread</b>

**Accessories**

Other	
Extensions	

**Functionality Tests**

Start	<b>YES</b>
Drives Forward	<b>YES</b>
Drives Backwards	<b>YES</b>
Brake Pedal Functions	<b>YES</b>

Functional Test Notes

**Supporting Documents**

Certificate of Registration	<b>YES</b>
Vehicle Licence Certificate	<b>YES</b>
Service Record	<b>YES</b>
Other	



**General**

The Detailed Equipment Information is limited in scope, and BKB Auctioneers has not inspected any aspects or components of the equipment other than those expressly set forth herein. Unless expressly stated, we make no representations or warranties, express or implied, concerning the equipment or its components, including without limitation any representations or warranties concerning functionality, conformity or compliance with any safety standard or requirement of any applicable authority or regulatory body, fitness for any particular purpose, or merchantability. You are strongly advised to perform your own detailed inspection of the equipment prior to bidding.

**Functions**

The Equipment is not tested under load or operated in all available gears. We make no representation or warranty that equipment is operating in accordance with manufacturers' specifications. No inspection has been performed with respect to any functionality aspect other than those expressly included herein. Only select photos have been provided for individual undercarriage components, and may not be indicative of the condition of the entire undercarriage as a whole.

**Dimensions**

Measurements are given as an estimate only. Actual loaded dimensions may vary based on truck/trailer height and the loaded machine configuration/position. It is the buyer's responsibility to measure all loads before leaving our auction site to ensure the load is safe for transport. All measurements should be verified by the buyer. DO NOT rely on these measurements for transportation purposes.



Lot Nr.

38

Date

14 April 2021

Detail Information

Location	Joostenbergvlakte
Year	
Manufacturer	Massey Ferguson
Model	188
Asset Type	Tractor
Serial Number or VIN	
Condition	5 - Very Good
Hours	
Km's	
Comes with	
Notes	Tractor has been restored



Operator Station

Cab Type	Open
Transmission Detail: Speed	
Transmission Detail: Shift Type	
Differential Lock	Yes
Notes	



Engine

Fuel Type	Diesel
Manufacturer	Massey Ferguson
Model	
Notes	

Rear Options

Hitch Type	
PTO	Yes
Hydraulic Outlets	
Notes	Rear-Lift



Body Details

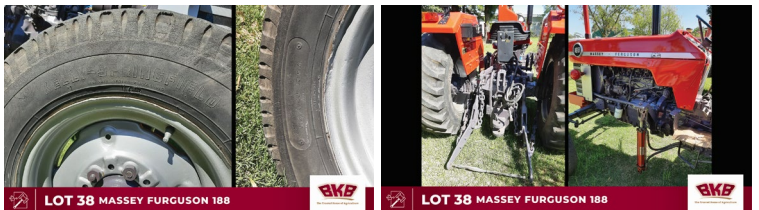
Size	
Type	
Notes	

Drive Train

Notes	
-------	--

Weights

Front Wheel Weights	
Back Wheel Weights	
Front Nose Weights	
Notes	



Undercarriage/Suspension

Tyre Manufacturer	Kelly Springfiled/Pirreli
Front Tyre Size	116/114J 10PR
Rear Tyre Size	18.4-30
Notes	60% Tread

Accessories

Other	
Extensions	

Functionality Tests

Start	YES
Drives Forward	YES
Drives Backwards	YES
Brake Pedal Functions	YES

Supporting Documents

Certificate of Registration	
Vehicle Licence Certificate	
Service Record	
Other	

Functional Test Notes

Empty text box for functional test notes.

General

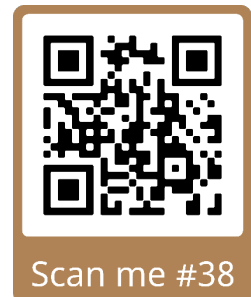
The Detailed Equipment Information is limited in scope, and BKB Auctioneers has not inspected any aspects or components of the equipment other than those expressly set forth herein. Unless expressly stated, we make no representations or warranties, express or implied, concerning the equipment or its components, including without limitation any representations or warranties concerning functionality, conformity or compliance with any safety standard or requirement of any applicable authority or regulatory body, fitness for any particular purpose, or merchantability. You are strongly advised to perform your own detailed inspection of the equipment prior to bidding.

Functions

The Equipment is not tested under load or operated in all available gears. We make no representation or warranty that equipment is operating in accordance with manufacturers' specifications. No inspection has been performed with respect to any functionality aspect other than those expressly included herein. Only select photos have been provided for individual undercarriage components, and may not be indicative of the condition of the entire undercarriage as a whole.

Dimensions

Measurements are given as an estimate only. Actual loaded dimensions may vary based on truck/trailer height and the loaded machine configuration/position. It is the buyer's responsibility to measure all loads before leaving our auction site to ensure the load is safe for transport. All measurements should be verified by the buyer. DO NOT rely on these measurements for transportation purposes.





Lot Nr.

39

Date

14 April 2021

**Detail Information**

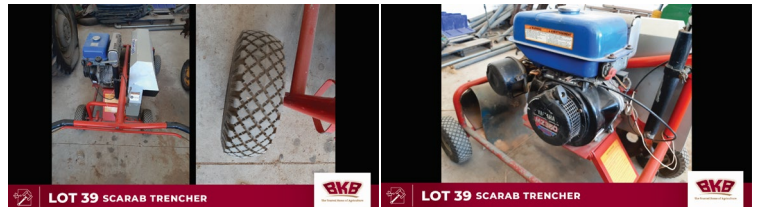
Location	Joostenbergvlakte
Year	
Manufacturer	Scarab Trencher
Model	Trencher
Asset Type	Other Agri Equipment
Serial Number or VIN	
Condition	4 - Good
Hours	
Km's	
Comes with	
Notes	



**LOT 39 SCARAB TRENCHER** 

**Operator Station**

Cab Type	
Transmission Detail: Speed	
Transmission Detail: Shift Type	
Differential Lock	
Notes	



**LOT 39 SCARAB TRENCHER**  **LOT 39 SCARAB TRENCHER** 

**Engine**

Fuel Type	Petrol
Manufacturer	Yamaha
Model	MZ 360
Notes	

**Rear Options**

Hitch Type	
PTO	
Hydraulic Outlets	
Notes	



**LOT 39 SCARAB TRENCHER** 

**Body Details**

Size	
Type	
Notes	

**Drive Train**

Notes	
-------	--

**Weights**

Front Wheel Weights	
Back Wheel Weights	
Front Nose Weights	
Notes	

**Undercarriage/Suspension**

Tyre Manufacturer	
Front Tyre Size	
Rear Tyre Size	
Notes	70% Tread

**Accessories**

Other Extensions	
------------------	--

**Functionality Tests**

Start	YES
Drives Forward	YES
Drives Backwards	YES
Brake Pedal Functions	

**Supporting Documents**

Certificate of Registration	
Vehicle Licence Certificate	
Service Record	
Other	

Functional Test Notes

**General**

The Detailed Equipment Information is limited in scope, and BKB Auctioneers has not inspected any aspects or components of the equipment other than those expressly set forth herein. Unless expressly stated, we make no representations or warranties, express or implied, concerning the equipment or its components, including without limitation any representations or warranties concerning functionality, conformity or compliance with any safety standard or requirement of any applicable authority or regulatory body, fitness for any particular purpose, or merchantability. You are strongly advised to perform your own detailed inspection of the equipment prior to bidding.

**Functions**

The Equipment is not tested under load or operated in all available gears. We make no representation or warranty that equipment is operating in accordance with manufacturers' specifications. No inspection has been performed with respect to any functionality aspect other than those expressly included herein. Only select photos have been provided for individual undercarriage components, and may not be indicative of the condition of the entire undercarriage as a whole.

**Dimensions**

Measurements are given as an estimate only. Actual loaded dimensions may vary based on truck/trailer height and the loaded machine configuration/position. It is the buyer's responsibility to measure all loads before leaving our auction site to ensure the load is safe for transport. All measurements should be verified by the buyer. DO NOT rely on these measurements for transportation purposes.



Lot Nr.

40

Date

14 April 2021

**Detail Information**

Location	Joostenbergvlakte
Year	1995
Manufacturer	Volkswagen
Model	City Golf
Asset Type	Transportation
Serial Number or VIN	
Condition	4 - Good
Hours	
Km's	
Comes with	
Notes	



**LOT 40 1995 VW CITY GOLF 1.6**

**Operator Station**

Cab Type	Closed
Transmission Detail: Speed	
Transmission Detail: Shift Type	Manual
Differential Lock	
Notes	

**Engine**

Fuel Type	Petrol
Manufacturer	Volkswagen
Model	1.6
Notes	



**LOT 40 1995 VW CITY GOLF 1.6**

**Rear Options**

Hitch Type	
PTO	
Hydraulic Outlets	
Notes	

**Body Details**

Size	
Type	
Notes	



**LOT 40 1995 VW CITY GOLF 1.6**

**Drive Train**

Notes	
-------	--

**Weights**

Front Wheel Weights	
Back Wheel Weights	
Front Nose Weights	
Notes	

**Undercarriage/Suspension**

Tyre Manufacturer	
Front Tyre Size	
Rear Tyre Size	
Notes	

**Accessories**

Other	
Extensions	

**Functionality Tests**

Start	YES
Drives Forward	YES
Drives Backwards	YES
Brake Pedal Functions	YES

**Supporting Documents**

Certificate of Registration	YES
Vehicle Licence Certificate	YES
Service Record	YES
Other	

Functional Test Notes

**General**

The Detailed Equipment Information is limited in scope, and BKB Auctioneers has not inspected any aspects or components of the equipment other than those expressly set forth herein. Unless expressly stated, we make no representations or warranties, express or implied, concerning the equipment or its components, including without limitation any representations or warranties concerning functionality, conformity or compliance with any safety standard or requirement of any applicable authority or regulatory body, fitness for any particular purpose, or merchantability. You are strongly advised to perform your own detailed inspection of the equipment prior to bidding.

**Functions**

The Equipment is not tested under load or operated in all available gears. We make no representation or warranty that equipment is operating in accordance with manufacturers' specifications. No inspection has been performed with respect to any functionality aspect other than those expressly included herein. Only select photos have been provided for individual undercarriage components, and may not be indicative of the condition of the entire undercarriage as a whole.

**Dimensions**

Measurements are given as an estimate only. Actual loaded dimensions may vary based on truck/trailer height and the loaded machine configuration/position. It is the buyer's responsibility to measure all loads before leaving our auction site to ensure the load is safe for transport. All measurements should be verified by the buyer. DO NOT rely on these measurements for transportation purposes.





Lot Nr.

41

Date

14 April 2021

**Detail Information**

Location	Joostenbergvlakte
Year	2006
Manufacturer	Hyundai
Model	H100 2.6 D
Asset Type	Transportation
Serial Number or VIN	
Condition	4 - Good
Hours	
Km's	472 000

Comes with	Halfway canopy
Notes	

**Operator Station**

Cab Type	Closed/Single Cab
Transmission Detail: Speed	
Transmission Detail: Shift Type	Manual
Differential Lock	
Notes	

**Engine**

Fuel Type	Diesel
Manufacturer	
Model	
Notes	

**Rear Options**

Hitch Type	
PTO	
Hydraulic Outlets	
Notes	

**Body Details**

Size	
Type	
Notes	

**Drive Train**

Notes	
-------	--

**Weights**

Front Wheel Weights	
Back Wheel Weights	
Front Nose Weights	
Notes	

**Undercarriage/Suspension**

Tyre Manufacturer	MR 200
Front Tyre Size	195-70R 15C
Rear Tyre Size	195-70R 15C
Notes	60% Tread

**Accessories**

Other	
Extensions	

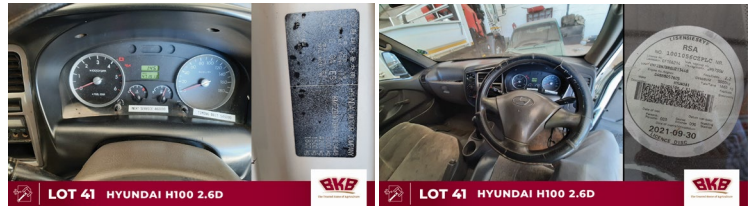
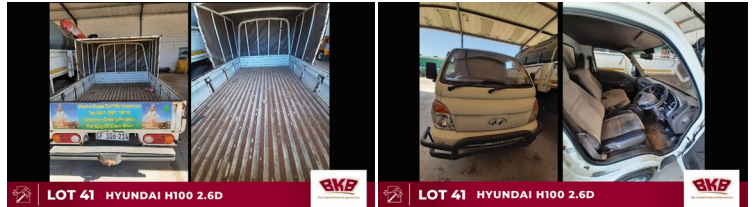
**Functionality Tests**

Start	YES
Drives Forward	YES
Drives Backwards	YES
Brake Pedal Functions	YES

Functional Test Notes

**Supporting Documents**

Certificate of Registration	YES
Vehicle Licence Certificate	YES
Service Record	YES
Other	



**General**

The Detailed Equipment Information is limited in scope, and BKB Auctioneers has not inspected any aspects or components of the equipment other than those expressly set forth herein. Unless expressly stated, we make no representations or warranties, express or implied, concerning the equipment or its components, including without limitation any representations or warranties concerning functionality, conformity or compliance with any safety standard or requirement of any applicable authority or regulatory body, fitness for any particular purpose, or merchantability. You are strongly advised to perform your own detailed inspection of the equipment prior to bidding.

**Functions**

The Equipment is not tested under load or operated in all available gears. We make no representation or warranty that equipment is operating in accordance with manufacturers' specifications. No inspection has been performed with respect to any functionality aspect other than those expressly included herein. Only select photos have been provided for individual undercarriage components, and may not be indicative of the condition of the entire undercarriage as a whole.

**Dimensions**

Measurements are given as an estimate only. Actual loaded dimensions may vary based on truck/trailer height and the loaded machine configuration/position. It is the buyer's responsibility to measure all loads before leaving our auction site to ensure the load is safe for transport. All measurements should be verified by the buyer. DO NOT rely on these measurements for transportation purposes.



Lot Nr.

42

Date

15 April 2021

**Detail Information**

Location	Joostenbergvlakte
Year	2006
Manufacturer	Hyundai
Model	H100 2.6 D
Asset Type	Transportation
Serial Number or VIN	
Condition	3 - Fair
Hours	
Km's	366 000
Comes with	Halfway canopy
Notes	



**Operator Station**

Cab Type	Closed
Transmission Detail: Speed	
Transmission Detail: Shift Type	Manual
Differential Lock	
Notes	

**Engine**

Fuel Type	Diesel
Manufacturer	
Model	
Notes	

**Rear Options**

Hitch Type	
PTO	
Hydraulic Outlets	
Notes	

**Body Details**

Size	
Type	
Notes	

**Drive Train**

Notes	
-------	--

**Weights**

Front Wheel Weights	
Back Wheel Weights	
Front Nose Weights	
Notes	

**Undercarriage/Suspension**

Tyre Manufacturer	MR 201
Front Tyre Size	195-70R 15C
Rear Tyre Size	195-70R 15C
Notes	50% Tread

**Accessories**

Other Extensions	
------------------	--

**Functionality Tests**

Start	YES
Drives Forward	YES
Drives Backwards	YES
Brake Pedal Functions	YES

Functional Test Notes

**Supporting Documents**

Certificate of Registration	YES
Vehicle Licence Certificate	YES
Service Record	YES
Other	



**General**

The Detailed Equipment Information is limited in scope, and BKB Auctioneers has not inspected any aspects or components of the equipment other than those expressly set forth herein. Unless expressly stated, we make no representations or warranties, express or implied, concerning the equipment or its components, including without limitation any representations or warranties concerning functionality, conformity or compliance with any safety standard or requirement of any applicable authority or regulatory body, fitness for any particular purpose, or merchantability. You are strongly advised to perform your own detailed inspection of the equipment prior to bidding.

**Functions**

The equipment is not tested under load or operated in all available gears. We make no representation or warranty that equipment is operating in accordance with manufacturers' specifications. No inspection has been performed with respect to any functionality aspect other than those expressly included herein. Only select photos have been provided for individual undercarriage components, and may not be indicative of the condition of the entire undercarriage as a whole.

**Dimensions**

Measurements are given as an estimate only. Actual loaded dimensions may vary based on truck/trailer height and the loaded machine configuration/position. It is the buyer's responsibility to measure all loads before leaving our auction site to ensure the load is safe for transport. All measurements should be verified by the buyer. DO NOT rely on these measurements for transportation purposes.





# But wait, there's more...

## ADDITIONAL ITEMS ON OFFER:



**BKB**

The Trusted Home of Agriculture



**RULES OF BKB DIGITAL AUCTIONS.**  
**TERMS AND CONDITIONS FOR ONLINE AUCTION PLATFORMS**

These rules of auctions is applicable to all digital auctions held under the control of either BKB Limited, registration number 1998/012435/06 with business These terms and conditions apply to all on line bidding at auction sales conducted.

**1. Applicable Law**

- 1.1 The auction will be governed by the Laws of the Republic of South Africa
- 1.2 The rules of this auction complies with section 45 of the Consumer Protection Act 68 of 2008 (CPA) and Section 43(1) of the Electronic Communications and Transactions Act 25 of 2002. (ECTA). For more information go to <http://www.legalrights.co.za/wp-content/uploads/2017/03/CONSUMER-PROTECTION-ACT-NO.-68-OF-2008.pdf> or [https://www.gov.za/sites/default/files/gcis\\_document/201409/a25-02.pdf](https://www.gov.za/sites/default/files/gcis_document/201409/a25-02.pdf)
- 1.3 Section 44(1) of the ECTA affording purchasers a cooling off period does not apply to online auctions.
- 1.4 All persons, when registering as a bidder must, in doing so, comply with Chapter 1 of the Financial Intelligence Centre Act (FICA)
- 1.5 The Auctioneer is hereby appointed by the Purchaser and Seller to act for and on behalf of the Purchaser and Seller as agent in accordance with Section 54 of the Value-Added Tax Act, 1991, in respect of all tax invoices, credit and/or debit notes in respect of all livestock, game and/or goods offered at the auction or any costs of transport and insurances premiums paid for on behalf of the Purchaser and Seller.

**2. Bidder Registration and pre-inspection of goods and/or livestock**

- 2.1. Any person who wishes to bid on the auction must register as a bidder online and in doing so comply with Chapter 1 of FICA. For more information on the requirements set out in FICA go to [https://www.fic.gov.za/Documents/FIC%20Act%20with%202017%20amendments%20\(1\)%20\(1\).pdf](https://www.fic.gov.za/Documents/FIC%20Act%20with%202017%20amendments%20(1)%20(1).pdf)
- 2.2. The online auction service is only available to legal and natural persons who can enter into legally binding contract under the laws of South Africa. Without derogating from the generality thereof, the auction services are not available to minors.
- 2.3. Any person registering as a bidder online is deemed to be the principle contracting party and no person will be allowed to register as an agent of a third party unless with the consent of the Auctioneer.
- 2.4. By registering online as a bidder, the bidder consents to the collection and use of personal information by the Auctioneer for the purposes of creating the registration, and participation in the online auction.
- 2.5. In the event that the Auctioneer consents to an agent registering on behalf of a principle then in that event such a person together with his principal must both register online prior to the auction and provide all necessary information as required in Chapter 1 of the regulations issued in terms of FICA 2001 with regard to proof of the principle's identity.
- 2.6. Where the bidder is a company the person completing the online registration must be duly authorised by resolution of the company to register as a purchaser and shall upload a certified copy of the resolution. (For purposes of this rule any reference to a company will include any reference to juristic person including partnerships, trusts or incorporated entities).
- 2.7. Once registered bidders must keep their account details confidential and must not permit third parties to use or access their account as purchasers will remain liable for all bids entered via their account online.
- 2.8. The final auction catalogue will be available online at least 24hrs before the commencement date and time of the auction.
- 2.9. Bidders who wish to inspect the various lots which will be presented at the auction, may inspect such lots online or at the seller's premises at a time and date specified on the Auctioneer website.
- 2.10. All livestock, game and goods are sold "voetstoots" and the purchasers do not enjoy the protection of Section 55 and 56 of the Consumer Protection Act.
- 2.11. Any information provided regarding the quality, breeding, age, date of insemination, condition, reproductive status or any information regarding health, production or mass or any other aspect of the livestock and/or game, is provided by the seller and any misrepresentation by the seller is without the cooperation or knowledge of the Auctioneer. Any right of recourse as a result of such misrepresentation shall be against the seller.

**3. Bidding Procedure**

- 3.1. The auction shall take place at the date and time as advertised or published and will not be postponed or delayed to enable any member or group of the public to partake in the auction.
- 3.2. The auction is not an absolute auction but subject to reserved prices settled by the sellers and as pointed out by the Auctioneer prior to the sale of the said asset or lot.
- 3.3. Should the Auctioneer become aware of any fault on advertising material or any other publication or amendment to these Rules of Auction, the Auctioneer will prior to the auction point out and when necessary amend such mistakes in the advertisement or publication.
- 3.4. Any bid made does not include VAT which, where applicable, will be added to the bidding price for which a VAT invoice will be issued.
- 3.5. During a sale for which the bidder has registered, the bidder can bid for a lot by clicking on the bid button.
- 3.6. The current bid will be displayed on the bidder's screen during the sale.
- 3.7. Until the fall of the hammer as contemplated in section 45(3) of CPA, any bid may be retracted or declined by the Auctioneer if not compliant with the CPA or the regulations issued in terms thereof.
- 3.8. The bidder acknowledge that he/she are bidding at a live auction and agree that each bid entered (unless withdrawn before the fall of the hammer) is binding even if submitted in error. The bidder accepts full responsibility for every bid submitted through his/her online bidding account.
- 3.9. Each lot is regarded as a separate sale transaction.
- 3.10. Each lot or animal will be presented for sale at the auctioned on a Rand per Kilogram basis and bidders will enter bids reflecting prices per kilogram
- 3.11. The sale by auction is complete at the fall of the hammer or any other practice through which the Auctioneer recognizes the highest bidder as the purchaser.
- 3.12. In the event of the highest bid being tied, the earliest bid received or recognised wins.
- 3.13. The Auctioneer reserves the right to reject a registration on line, may withdraw permission for the use of the online auction service for whatsoever reason before or during the sale.

**4. Payment arrangements**

- 4.1. The final weight in kilograms of each lot or animal (as the case may be) will be established at the time the purchaser collects and take delivery thereof (the delivery weight).
- 4.2. Upon delivery and establishment of the delivery weight, the Auctioneer will provide an invoice to the purchaser reflecting the final purchase price of the specific lot or animal calculated on the successful bid price per kilogram times the delivery weight.
- 4.3. All sales are for cash and purchase price is payable by electronic funds transfer (EFT) immediately to the Auctioneer on acceptance of the bid unless the purchaser has an approved credit facility with the Auctioneer. Any payment made in cash is further subject to cash or any other handling fees. Should the Purchaser however fail to make payment within 7 days from date of delivery, BKB will be entitled to add interest calculated at the current bank prime rate plus 5% to the capital amount outstanding. The interest will be calculated monthly and capitalised.
- 4.4. Should the purchaser not pay the purchase price immediately and has failed to make arrangements for payment with the Auctioneer, then the Auctioneer can/will cancel the sale and treat the assets or lots as unsold lots which may again be presented on the auction for sale or be sold out of hand by means of liaison services, depending on the seller's mandate to the auctioneer.
- 4.5. In the event that Purchaser has made necessary finance arrangements with BKB, the Purchaser hereby authorises BKB to pay the purchase price or costs of transport, insurance and any other agreed cost, minus BKB's commissions, on behalf of the Purchaser to the Seller and other service providers, in which event the said payment by BKB on behalf of the Purchaser will be deemed to be monies lent and advanced, the terms and conditions thereof being agreed with the Purchaser in a separate credit agreement or sale agreement. All payments made by BKB to the Seller on behalf of the Purchaser in terms of this clause will be made after the lapse of 5 (Five) working days from date of delivery of the asset to the Purchaser. Any payment made by BKB to the Seller prior to the lapse of the 5 (Five) working day period is made at the sole discretion of BKB and not an enforceable indulgence.
- 4.6. In the event of payments made on behalf of the purchaser by BKB as contemplated in clause 6.5 above, the purchaser acknowledges herewith being indebted to BKB for the invoiced amount.

**5. Ownership and risk in the sold goods.**

- 5.1. Ownership in the lot or assets will remain that of the seller until the purchase price has been paid in full to the seller.
- 5.2. Risk in the lot or assets passes to the purchaser (the highest bidder) at the time of the Auctioneer notifies the purchaser of the acceptance of his/her bid



- 5.3. For as long as any amount is owing to BKB by the Purchaser, the Purchaser may not, where the assets are the subject of security of the Purchaser's credit facility with BKB, relinquish possession of the said asset, nor may he cede the asset or any of its rights and obligations in terms of this agreement to a third party or otherwise encumber, sell or dispossess the said asset or allow it to become the subject of any right of retention, hypothec, pledge or any encumbrance, whatever the cause thereof may be. BKB may be entitled to cede its rights and obligations without affecting its rights of recourse for any monies still due to it.
- 5.4. In the event of the Seller already being indebted to BKB or any of its affiliates at the time of this auction, the Seller hereby irrevocably authorises BKB to set off the purchase price due to the Seller by BKB (minus BKB's commission) against the amounts due by the Seller to BKB.
- 5.5. Where BKB, in terms of a credit agreement, lent and advanced monies to the Purchaser for payment of the purchase price of any asset or payment of any transport costs or insurance premiums, no defence of whatsoever nature which the Purchaser may raise against the Seller or the transport contractor or the insurance company may be raised against BKB and the Purchaser shall still be obligated to pay all amounts owing, together with further interest and costs thereon raised in terms of the credit agreement or sale agreement, to be BKB. The conditions of this clause do not interfere with the rights, entitlements or remedies the Purchaser may have against the Seller, transport contractor or insurance company.
- 5.6. Neither the Purchaser, nor the Seller, shall be entitled to apply set-off or to retain any monies owing arising from any claim they may have against each other or BKB with regards to any amount owing in terms hereof.
- 6. Removal and Risk**
- 6.1. Each lot shall immediately after the date of notification by the Auctioneers to the purchaser of acceptance of his/her bid deemed to be delivered to the purchaser at the address of the seller at which time the risk will pass to the purchaser who will at his own risk and cost remove the lots or assets from the Sellers premises or auction terrain.
- 6.2. Removal of any assets or lots however will not be allowed by the Auctioneer until payment of the purchase price by the purchaser or acceptable arrangements for payment thereof have been made by the purchaser with the Auctioneer.
- 6.3. BKB will not accept liability for any loss or damage to the goods or livestock as a result of the purchasers failure to make adequate and timeous arrangements for the removal of the livestock or goods.
- 6.4. Under no circumstances will BKB be held liable for any loss or damage of any cause whatsoever albeit direct or indirect damages suffered by anyone if the livestock and/or game at the auction premises have to be placed under quarantine as a result of the presence of a livestock and/or game disease present. In such event BKB will have the right to cancel the auction as well as any already complete sales and no party will be entitled or have a right of recourse against BKB.
- 6.5. Any party requiring permits, removal certificate, documentation of identification or any other statutory prescribed document will solely be responsible for obtaining same. Any instructions to an auctioneer with regards to the loading, transporting, choice of transport contractors, insurance or choice of insurers will be executed at the sole risk of the person acquiring such services and the Auctioneer will not be held responsible for any losses whether direct or indirect which may be suffered as a result of giving affect to the instructions by the Auctioneer.
- 6.6. Any agreement entered into by the Auctioneer with a transport company or insurer is done so in its representative capacity of the seller or purchaser. All transport costs or insurance premiums are therefore payable to the Auctioneer in cash except if acceptable alternative arrangements were made with the Auctioneer
- 7. Limitation of Liability**
- 7.1. Notwithstanding the section 43 of ECTA, under no circumstances will BKB, its affiliates or subsidiaries, or any shareholders of BKB and its subsidiaries, officers, directors, employees or agents be liable for any loss or damage caused by:
- 7.1.1. The bidder's reliance on information obtained through either the content or the services, or
- 7.1.2. by being exposed to information contained on the site, or
- 7.1.3. the defamatory, offensive or illegal conduct of other users or third parties or
- 7.1.4. the use or inability to use the website or the services or content provided from or through the website or
- 7.1.5. any disruption in the internet connection resulting in the bidder being disconnected from the online auction for whatsoever reason or
- 7.1.6. the failure to record a bid as a result of being disconnected or the online platform going offline during the auction process.
- 7.2. Neither BKB or any third party content provider nor their respective agents shall be liable for any direct indirect, incidental or consequential damages arising out of the use or inability to use or access the online auction site.
- 7.3. BKB makes no representation or warranties, implied or otherwise that the auction service will be uninterrupted and 100% error free. It is every users sole responsibility that the online auction site and services provided by BKB through this website will meet the user's individual requirements and be compatible with the user's hardware and software.
- 8. General terms and conditions**
- 8.1. The Auctioneer will only be obliged to give reasons of the auction if such reasons are other than the voluntary sale of goods by its owners.
- 8.2. The bidders' roll and vendor roll will be available for registered purchasers for inspection with written notice and good reason during the normal office hours at the business premises of the Auctioneer.
- 8.3. Both the seller and the purchaser consent to the jurisdiction of the Magistrate's Court as contemplated in Section 45 of Act 32 of 1944 having regard to any action which the Auctioneer may institute against the purchaser or seller irrespective of the cause of action. Notwithstanding the aforesaid the Auctioneer will have the sole and absolute discretion to institute action in any High Court with appropriate jurisdiction.
- 8.4. Any legal costs that BKB may have or will incur as a result of the non-compliance of the Purchaser and/or Seller in terms of its or their obligations herein, shall be recoverable by BKB, together with collection commissions from the Purchaser and/or Seller on a scale as between attorney and own client.
- 8.5. No variation, amendment, novation or addition to these terms and conditions will have the effect of BKB renouncing any of its rights in terms hereof, unless it is reduced to writing and signed by BKB.
- 8.6. No relaxation or indulgence by the Auctioneer must be interpreted as a waiver of any of the Auctioneer's rights in terms hereof. Such relaxation or indulgence must also not be interpreted as a novation hereof.
- 8.7. Should any condition be unlawful or become retrospectively unlawful, that unlawful condition shall be deemed to be amended to the extent and in the manner as is necessary to make it lawful or should such amendment be impossible, the unlawful conditions shall be deemed devisable from the remainder of the conditions and pro no