

AMPTELIKE VEILINGSKATALOGUS VIR / OFFICIAL AUCTION CATALOGUE FOR

PF SCHEEPERS - ZINABOS

Veilingsdatum / Auction Date:
04 August 2023

Data soos op / Data as on:
30 June 2023



SALES UNDER AUSPICES OF BONSMARA SA

Bonsmara stud breeding is subject to the stipulations of the Livestock Improvement Act and conforms to the standards of Bonsmara SA. The Society therefore has the right to implement certain controls to ensure the accuracy of information regarding Parentage, Performance and Estimated Breeding Values.

Information regarding Parentage, Performance and Estimated Breeding Values of animals, as supplied by the breeder, have been verified and compared to the official database of LOGIX BEEF. Bonsmara SA therefore, confirms the accuracy of such information.

To the knowledge of the Society these controls have been carried out accurately. However, the Society does not take any responsibility for incorrect information through printing errors or incorrect information provided by the breeder.

Animals on such sales have been visually screened by Inspectors of Bonsmara SA and comply with the Bonsmara Minimum Breed Standards as stipulated by the Society.

The Society DOES NOT have any control over:

- Immunization and health status of animals
- Pregnancy status of cows and heifers
- Suitability of a bull for breeding
- Fertility status as well as venereal diseases and
- Commercial animals

Since the above is not classified as information regarding Parentage, Performance and Estimated Breeding Values, it DOES NOT fall within the jurisdiction of the meaning "Under the Auspices of Bonsmara SA".



VEILINGS ONDER BESKERMING VAN BONSMARA SA

Bonsmara stoetteling wat onderhewig is aan die bepalings van die Veeverbeteringswet, vind plaas onder die vaandel van Bonsmara SA. Daarom behou die Genootskap hom die reg voor om kontroles volgens bepaalde prosedures uit te oefen ten opsigte van Ouerskap inligting, Prestasiedata en Beraamde Teelwaardes.

Ouerskap inligting, Prestasiedata en Beraamde Teelwaardes soos deur die teler voorsien vir die doel van hierdie katalogus, is gekontroleer en vergelyk met die amptelike databasis soos gehou deur LOGIX BEEF. Bonsmara SA bevestig dus die korrektheid van sodanige inligting.

Alhoewel die kontroles na die beste wete van die Genootskap gedoen is, kan die Genootskap egter nie verantwoordelik gehou word vir foutiewe inligting as gevolg van drukkersfoute of verkeerde inligting deur die telers verskaf nie.

Diere wat op hierdie veilings aangebied word, is onderwerp aan 'n proses van visuele inspeksie deur Keurders van Bonsmara SA en voldoen aan die Bonsmara Minimum Rasstandaarde soos bepaal deur die Genootskap.

Die Genootskap het egter GEEN beheer oor:

- Immunisering en gesondheidstatus van diere
- Dragtigheidstatus van koeie en verse
- Teelgeskiktheid van bulle
- Vrugbaarheidstatus, asook geslagsiektes en
- Kommersiële diere nie.

Aangesien bogenoemde nie val onder die bedoeling met Ouerskap inligting, Prestasiedata en Beraamde Teelwaardes nie, sorteer dit NIE onder die jurisdiksie van die bedoeling "Onder beskerming van Bonsmara SA" nie.



ANIMAL AND PEDIGREE INFORMATION

LOT 1 1 **THE RED CATTLE FARM** 2

3

ABC 150029 4

2015-02-03 5

SP 6

Parentage	Sire	Dam
DNA	✓	
Genomic	✓	

DEF 100066 P

7

DEF 050022

8

GHI 070076 HH(c) 9

AGE/CALV. 14/10
AVG. Wt/CALV. 92/10
ICP 395

JKL 000077 P

12

MNO 030002

AGE/CALV. 19/10
AVG. Wt/CALV. 109/10
ICP 407

1. Lot Number
2. Owner of the animal
3. Herd's logo (if available)
4. Animal Identification Number
5. Birth date
6. Herd book section - NFR / PEN / F0 / A / B / SP
7. Four (4) generation pedigree
8. Genomic testing - it is indicated with the GT logo
9. Polled Status - the status will only be printed for animals that have been tested
10. Parentage Verification - a green tick (✓) indicates that the sire and/or dam has been verified via either microsatellite (DNA), or Genomic testing
11. QR Code - This code can be scanned with a smart device. It redirects to the animal's information on www.SABeefBulls.com where all information for the animal is available.
12. Dam information
 - Age and Number of Calvings
 - Average Wean Index and Number of Calves Weaned
 - Intercalving Period

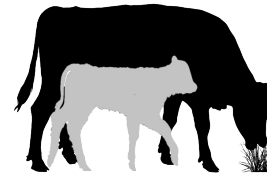
MYOSTATIN STATUS

The animal's status, if tested for myostatin variants, is indicated as follows:

- Not Tested
- 0 - Normal
- 1 - Heterozygous / Carrier of Double-Muscling gene
- 2 - Homozygous / Double-Muscled

LOGIX SELECTION VALUES

Calving Ease Value	Weaner Calf Value	Fertility Value	Maintenance Value	Cow Value	Growth Value	Carcass Value
109	98	111	99	101	98	103
1	2	3	4	5	6	7

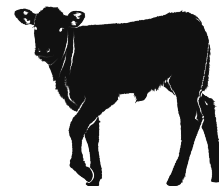


5 L♀ GIX Cow Value

Selection of:

- Fertile cows,
- with low maintenance,
- that calf easily,
- and wean heavy calves

- 1 Calving Ease Value EBVs Birth Direct & Maternal
- Calf Growth Value EBV Wean Direct
- 3 Fertility Value EBVs Cow & Heifer Fertility, EBV Longevity
- Milk Value EBV Wean Maternal
- 4 Maintenance Value EBVs Mature weight & Milk



2 L♀ GIX Weaner Calf Value

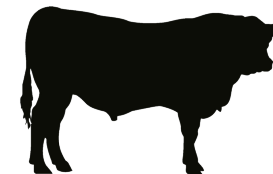
Selection of:

- Heavier weaning weights,
- with more milk,
- but restricted birth weight



7 L♀ GIX Carcass Value

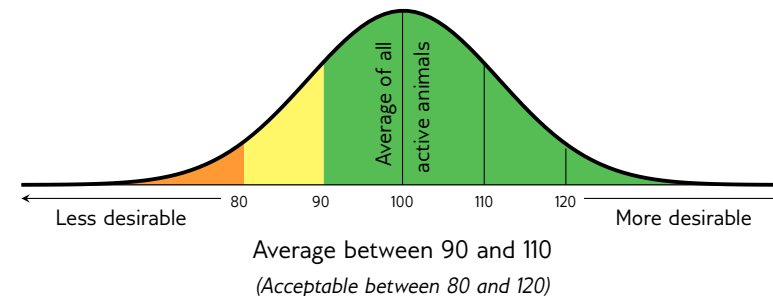
Selection for higher meat yield on carcass



6 L♀ GIX Growth Value

Selection of efficient growers on veld & in the feedlot

INTERPRETATION OF BREEDING VALUE INDICES



EXPLANATION OF BREEDING VALUES AND SELECTION VALUES

Traits		Description/Measurement		Goal		General Guidelines					
						<80	<90	90-110	>110	>120	
Selection Values	5	Cow Value	CV	Combination of Calving Ease, Calf Growth, Milk, Maintenance and Fertility Values (Rand-Value)	Profitable Cow	Loss					Profit
	1	Calving Ease Value	CEV	Risk for calving problems (calf too heavy) vs calf too small	Average birth weight	High					Low
		Calf Growth Value	CGrV	Calf's genetic ability for pre-weaning growth	Heavy weaner calf	Light					Heavy
		Milk Value	MlkV	Cow's genetic mothering and milking ability	Enough milk for the calf	Less					More
	4	Maintenance Value	MntV	Maintenance requirements of cow (cow weight and milk)	Low cow maintenance	High				*	Low
	3	Fertility Value	FertV	Fertility and retention of cows and heifers	Fertile cows	Low					High
	2	Weaner Calf Value	WnCV	Combination of calf's weight and cow's milk	Heavy weaner calves	Light					Heavy
	6	Growth Value	GV	Efficient growth on veld and in feedlot (Rand-value)	Profitable growth	Loss					Profit
Cow & Heifer	7	Carcass Value	VarcV	Meat on carcass (Weight and RTU EBVs)	More meat on the carcass	Less					More
		Production Value	PV	Combination of Cow- and Growth values (Rand-value)	Profitable animals	Loss					Profit
	8	Birth Weight Direct	BD	Birth weight (Calf's genetic ability)	Average birth weight	Heavy					Light
		Birth Weight Maternal	BM	Birth weight (Cow's genetic ability)	Easy calving	Heavy					Light
	9	Weaning Weight Direct	WD	Weaning weight (Calf's genetic ability)	Heavy weaner calves	Light					Heavy
	10	Weaning Weight Maternal	WM	Weaning weight (Cow's genetic ability)	Good mothers	Poor					Good
Fertility	18	Mature Cow Weight	MW	Cow weight at weaning of first three calves	Average mature cow weight	Light			*	*	Heavy
		Cow-Calf Birth	CCB	EBV Birth Direct / EBV Mature Cow weight	Average	Low					High
		Cow-Calf Wean	CCW	EBV Wean Direct / EBV Mature Cow weight	High calf-cow ratio	Low					High
	12	Heifer Fertility	HF	Age at first calving	Fertile heifers	Less					More
	13	Cow Fertility	CFE	First 3 inter-calving periods (ICPs)	Fertile cows	Less					More
Growth & Frame	11	Scrotal Circumference	SC	Scrotal circumference as measured during the growth test	Fertile bulls	Less					More
	14	Longevity	LG	Retention of progeny	Acceptable progeny	Poor					Good
	15	Post-Wean Weight	PWn	12- and 18 month weights	Good post-wean growth	Low				*	High
	16	Average Daily Gain	ADG	Average daily gain	Good growth	Poor					Good
	17	Feed Conversion Ratio	FCR	100g feed intake / g weight gain	Feed efficiency	Poor					Good
		Final Test Weight	FW	Final weight in the growth test	Heavy carcass	Light				*	Heavy
	19	Height	H	Shoulder / Hip height in growth test	Average height	Short					Tall
	20	Length	L	Length in growth test	Longer for more muscle	Short					Long
Carcass	24	Length-Height Ratio	LH	EBV Length / EBV Height	Longer rather than tall	<1					>1
	21	Eye Muscle Area	EMA	RTU measured eye muscle area	Bigger steaks	Small					Big
	22	Fat Thickness	Fat	RTU measured P8 backfat thickness	Carcass quality	Thin					Thick
	23	Marbling	Mar	RTU measured % of intra-muscular fat	Juicy meat	Low					High
	Dressing Percentage	D%	Carcass weight / Live weight	High dressing percentage	Low					High	

* Determined by own selection goal

GENETIC VALUES - BUILDING BLOCKS

Calf and Mother			Fertility				Post-Wean Growth			Frame			Carcass		
Birth Dir.	Wean Dir.	Wean Mat.	Scrot. Circ.	Heifer Fert.	Cow Fert.	Longev.	Post Wean	ADG	FCR	Mature Weight	Height	Length	EMA	Fat	Mar
99	99	90	97	75	92	85	100	94	93	92	123	110	104	100	79
8	9	10	11	12	13	14	15	16	17	18	19	20	21	22	23

PHENOTYPIC VALUES

Wean Index	365D Index	540D Index	ADG Index	FCR Index	Scrotum	LH
109	104	105	122	117	327	1.22
			16	17	11	24

The Logix Selection Values are compiled of specific genetic building blocks, as indicated in the selection value descriptions on the previous page. These genetic building blocks are indicated in the catalogue by their Breeding Value Indices.

- Wean, 365D, 504D, ADG and FCR Indices - phenotypic index obtained within the animal's contemporary group
- Scrotum - adjusted scrotal circumference, in mm, as measured during the growth test
- Length-Height Ratio (LH) - the animal's length / height ratio as measured during the growth test

BULLS

LOT 1 P.F. SCHEEPERS

CE F 200410
2020-07-27 SP

Parentage Sire Dam

DNA

Genomic

CE F 180338

CE F 130317 HH(c)
AGE/CALV. 12/9
AVG. WJ/CALV. 103/7

CE F 130147
AGE/CALV. 9/7
AVG. WJ/CALV. 102/7
ICP 369

CE F 130548 HH(c)

CE F 180021
AGE/CALV. 5/3
AVG. WJ/CALV. 109/3
ICP 377

CE F 090148
AGE/CALV. 10/7
AVG. WJ/CALV. 105/7
ICP 434

CE F 110301 HH(c)
AGE/CALV. 12/9
AVG. WJ/CALV. 103/7

GJN 100238

CE F 110101
AGE/CALV. 5/1
AVG. WJ/CALV. 108/1

GJN 100238

CE F 110046
AGE/CALV. 12/9
AVG. WJ/CALV. 107/9

LDW 050057

CE F 020104
AGE/CALV. 10/7
AVG. WJ/CALV. 99/7

Calving Ease Value	Weaner Calf Value	Fertility Value	Maintenance Value	Cow Value	Growth Value	Carcass Value
109	119	119	95	126	103	114

Calf and Mother			Fertility				Post-Wean Growth			Frame			Carcass		
Birth Dir.	Wean Dir.	Wean Mat.	Scr. Circ.	Heifer Fert.	Cow Fert.	Longev.	Post Wean	ADG	FCR	Mature Weight	Height	Length	EMA	Fat	Mar
105	112	106	126	115	104	118	112	109	102	102	99	119	119	114	90

Wean Index	365D Index	540D Index	ADG Index	FCR Index	Scrotum	LH
104	-	-	90	-	369	1.23

Myostatin	
Q204X	0
NT821	0
F94L	0

REMARKS: Goed vir verse

LOGIX EBV Analysis: 2023-06-19

LOT 2 P.F. SCHEEPERS

CE F 200554
2020-10-11 SP

Parentage Sire Dam

DNA

Genomic

CE F 150315

CE F 100304 HH(c)
AGE/CALV. 15/13
AVG. WJ/CALV. 101/12

CE F 050121
AGE/CALV. 12/10
AVG. WJ/CALV. 99/10
ICP 363

AG 070480

CE F 110090
AGE/CALV. 12/10
AVG. WJ/CALV. 106/10
ICP 364

CE F 040125
AGE/CALV. 10/9
AVG. WJ/CALV. 93/8
ICP 367

CE F 080025

CE F 070151
AGE/CALV. 15/13
AVG. WJ/CALV. 101/12

CE F 010375

CE F 960097
AGE/CALV. 10/8
AVG. WJ/CALV. 103/8

AG 020251

BZ 010192
AGE/CALV. 12/6
AVG. WJ/CALV. 101/6

CE F 010357

CE F 930083
AGE/CALV. 17/14
AVG. WJ/CALV. 105/12

Calving Ease Value	Weaner Calf Value	Fertility Value	Maintenance Value	Cow Value	Growth Value	Carcass Value
90	103	93	97	94	106	108

Calf and Mother			Fertility				Post-Wean Growth			Frame			Carcass		
Birth Dir.	Wean Dir.	Wean Mat.	Scr. Circ.	Heifer Fert.	Cow Fert.	Longev.	Post Wean	ADG	FCR	Mature Weight	Height	Length	EMA	Fat	Mar
90	111	90	110	93	89	111	103	108	119	101	103	112	101	83	61

Wean Index	365D Index	540D Index	ADG Index	FCR Index	Scrotum	LH
110	-	-	112	109	374	1.25

Myostatin	
Q204X	0
NT821	0
F94L	0

REMARKS: Top moeder verkoop Golden oldie R75000

LOGIX EBV Analysis: 2023-06-19

LOT 3 P.F. SCHEEPERS

CE F 200489
2020-09-02 SP

Parentage Sire Dam

DNA

Genomic

LAR 160004

LAR 120455

LAR 050072
AGE/CALV. 10/8
AVG. WJ/CALV. 105/7
ICP 396

CE F 100412

CE F 130085
AGE/CALV. 10/8
AVG. WJ/CALV. 100/8
ICP 378

CE F 100102
AGE/CALV. 7/5
AVG. WJ/CALV. 104/4
ICP 355

LAR 090349

LAR 050015
AGE/CALV. 10/8
AVG. WJ/CALV. 108/7

LAR 030066

LAR 020293
AGE/CALV. 10/7
AVG. WJ/CALV. 107/7

NPT 070170

CE F 000050
AGE/CALV. 14/12
AVG. WJ/CALV. 102/12

CE F 060478

CE F 030118
AGE/CALV. 10/8
AVG. WJ/CALV. 99/7

Calving Ease Value	Weaner Calf Value	Fertility Value	Maintenance Value	Cow Value	Growth Value	Carcass Value
96	117	104	93	113	121	119

Calf and Mother			Fertility				Post-Wean Growth			Frame			Carcass		
Birth Dir.	Wean Dir.	Wean Mat.	Scr. Circ.	Heifer Fert.	Cow Fert.	Longev.	Post Wean	ADG	FCR	Mature Weight	Height	Length	EMA	Fat	Mar
94	116	104	107	91	114	110	120	121	109	106	93	109	123	107	97

Wean Index	365D Index	540D Index	ADG Index	FCR Index	Scrotum	LH
112	-	-	108	-	341	1.21

Myostatin	
Q204X	1
NT821	0
F94L	0

REMARKS:

LOGIX EBV Analysis: 2023-06-19

BULLE

LOT 4 P.F. SCHEEPERS

CEP 190506
2019-08-21 SP

Ouerskap Vaar Moer

DNS

Genomies

CEP 130053
OUD/KALW. 10/8
GEM. SI/KALW. 101/7
TKP 365

GJN 100238

CEP 110046
OUD/KALW. 12/9
GEM. SI/KALW. 107/9
TKP 386

CEP 100412

CEP 100107
OUD/KALW. 7/5
GEM. SI/KALW. 84/5
TKP 364

WAT 070090

GJN 080116
OUD/KALW. 4/2
GEM. SI/KALW. 100/2

CEF 080435

CEF 080110
OUD/KALW. 15/13
GEM. SI/KALW. 111/12

NPT 070170

CEF 000050
OUD/KALW. 14/12
GEM. SI/KALW. 102/12

LAR 050159

CEF 060180
OUD/KALW. 7/4
GEM. SI/KALW. 96/4

Geboortegemak Waarde	Speenkalf Waarde	Vrugbaarheids-waarde	Onderhouds-waarde	Koeiwaarde	Groei-waarde	Karkas-waarde
106	132	125	94	139	122	127

Kalf en Moeder			Vrugbaarheid				Na-Speen Groei			Raam			Karkas		
Geb. Dir.	Spn. Dir.	Spn. Mat.	Skr. Omtr.	Vers Vrugb.	Koei Vrugb.	Lankl.	Na-Speen	GDT	VOV	Volw. Gewig	Hoogte	Lengte	OSO	Vet	Mar
105	124	107	119	118	111	119	131	124	116	104	108	117	133	99	92

Spn. Indeks	365D Indeks	540D Indeks	GDT Indeks	VOV Indeks	Skrotum	LH
106	-	-	120	-	384	1.20

Miostatien	
Q204X	0
NT821	0
F94L	0

OPMERKINGS: Gebruik bul in kudde 27 Gem GM 34kg

LOGIX EBV Analise: 2023-06-19

LOT 5 P.F. SCHEEPERS

CEP 200503
2020-09-08 SP

Ouerskap Vaar Moer

DNS

Genomies

CEP 140011
OUD/KALW. 9/7
GEM. SI/KALW. 105/7
TKP 366

CEF 100304 HH(c)

CEF 050121
OUD/KALW. 12/10
GEM. SI/KALW. 99/10
TKP 363

BP 090012

CEF 090251
OUD/KALW. 8/6
GEM. SI/KALW. 99/5
TKP 396

CEF 080025

CEF 070151
OUD/KALW. 15/13
GEM. SI/KALW. 101/12

CEF 010375

CEF 960097
OUD/KALW. 10/8
GEM. SI/KALW. 103/8

BP 060021

BP 060012
OUD/KALW. 9/6
GEM. SI/KALW. 108/6

CEF 070464

CEF 060080
OUD/KALW. 8/5
GEM. SI/KALW. 91/5

Geboortegemak Waarde	Speenkalf Waarde	Vrugbaarheids-waarde	Onderhouds-waarde	Koeiwaarde	Groei-waarde	Karkas-waarde
95	107	109	86	106	104	109

Kalf en Moeder			Vrugbaarheid				Na-Speen Groei			Raam			Karkas		
Geb. Dir.	Spn. Dir.	Spn. Mat.	Skr. Omtr.	Vers Vrugb.	Koei Vrugb.	Lankl.	Na-Speen	GDT	VOV	Volw. Gewig	Hoogte	Lengte	OSO	Vet	Mar
89	114	93	91	98	112	111	106	100	98	115	98	113	85	122	62

Spn. Indeks	365D Indeks	540D Indeks	GDT Indeks	VOV Indeks	Skrotum	LH
108	-	-	105	-	339	1.25

Miostatien	
Q204X	0
NT821	0
F94L	0

OPMERKINGS: Gebruik in kodd kudde

LOGIX EBV Analise: 2023-06-19

LOT 6 P.F. SCHEEPERS

CEP 190308
2019-02-23 SP

Ouerskap Vaar Moer

DNS

Genomies

CEP 160117
OUD/KALW. 7/4
GEM. SI/KALW. 99/4
TKP 423

TOR 070049

DAJ 120094
OUD/KALW. 8/5
GEM. SI/KALW. 105/5
TKP 416

HDT 120043 Pp(c)

CEF 060167
OUD/KALW. 14/10
GEM. SI/KALW. 103/10
TKP 411

FCT 000065

RAI 000032
OUD/KALW. 7/6
GEM. SI/KALW. 103/6

LAR 070038

DAJ 080010
OUD/KALW. 11/9
GEM. SI/KALW. 98/8

HDT 080059 Pp(c)

HDT 090001 P
OUD/KALW. 11/7
GEM. SI/KALW. 98/6

CEF 030417

CEF 030183
OUD/KALW. 3/1
GEM. SI/KALW. 96/1

Geboortegemak Waarde	Speenkalf Waarde	Vrugbaarheids-waarde	Onderhouds-waarde	Koeiwaarde	Groei-waarde	Karkas-waarde
102	99	107	122	108	90	88

Kalf en Moeder			Vrugbaarheid				Na-Speen Groei			Raam			Karkas		
Geb. Dir.	Spn. Dir.	Spn. Mat.	Skr. Omtr.	Vers Vrugb.	Koei Vrugb.	Lankl.	Na-Speen	GDT	VOV	Volw. Gewig	Hoogte	Lengte	OSO	Vet	Mar
96	82	120	98	97	97	129	80	95	104	79	71	80	90	118	80

Spn. Indeks	365D Indeks	540D Indeks	GDT Indeks	VOV Indeks	Skrotum	LH
102	-	-	95	-	326	-

Miostatien	
Q204X	0
NT821	0
F94L	0

OPMERKINGS: Gebruik bul in kudde 56 Gem GM 33kg. Uitstaande moeder

LOGIX EBV Analise: 2023-06-19

BULLS

LOT 7 P.F. SCHEEPERS

CEP 200457
2020-08-23
SP

Parentage Sire Dam

DNA

Genomic

VV 160038

VV 130147

VV 070239
AGE/CALV. 15/14
AVG. WJ/CALV. 100/14
ICP 375

CEF 130317 HH(c)

CEF 160019
AGE/CALV. 7/5
AVG. WJ/CALV. 104/5
ICP 374

CEF 120125
AGE/CALV. 10/9
AVG. WJ/CALV. 96/8
ICP 364

AG 090226

VV 050452
AGE/CALV. 11/9
AVG. WJ/CALV. 101/9

VV 040322

VV 010386
AGE/CALV. 10/8
AVG. WJ/CALV. 103/8

CEF 110301 HH(c)

CEF 100161
AGE/CALV. 12/9
AVG. WJ/CALV. 103/7

GCD 090102

CEF 040144
AGE/CALV. 9/6
AVG. WJ/CALV. 103/6

Calving Ease Value	Weaner Calf Value	Fertility Value	Maintenance Value	Cow Value	Growth Value	Carcass Value
112	107	121	82	115	127	128

Calf and Mother			Fertility				Post-Wean Growth			Frame			Carcass		
Birth Dir.	Wean Dir.	Wean Mat.	Scr. Circ.	Heifer Fert.	Cow Fert.	Longev.	Post Wean	ADG	FCR	Mature Weight	Height	Length	EMA	Fat	Mar
108	115	82	108	110	115	118	121	115	102	122	101	113	122	151	107

Wean Index	365D Index	540D Index	ADG Index	FCR Index	Scrotum	LH
110	-	-	116	-	314	1.22

Myostatin	
Q204X	0
NT821	0
F94L	0

REMARKS: Goed vir verse

LOGIX EBV Analysis: 2023-06-19

LOT 8 P.F. SCHEEPERS

CEP 200531
2020-09-23
SP

Parentage Sire Dam

DNA

Genomic

LAR 160004

LAR 120455

LAR 050072
AGE/CALV. 10/8
AVG. WJ/CALV. 105/7
ICP 396

ADV 100068

CEF 150092
AGE/CALV. 8/6
AVG. WJ/CALV. 107/6
ICP 359

CEF 100171
AGE/CALV. 12/10
AVG. WJ/CALV. 100/10
ICP 362

LAR 090349

LAR 050015
AGE/CALV. 10/8
AVG. WJ/CALV. 108/7

LAR 030066

LAR 020293
AGE/CALV. 10/7
AVG. WJ/CALV. 107/7

SYF 070036

ADV 070142
AGE/CALV. 5/3
AVG. WJ/CALV. 98/3

CEF 070468

CEF 050127
AGE/CALV. 15/13
AVG. WJ/CALV. 91/12

Calving Ease Value	Weaner Calf Value	Fertility Value	Maintenance Value	Cow Value	Growth Value	Carcass Value
94	118	107	87	114	125	117

Calf and Mother			Fertility				Post-Wean Growth			Frame			Carcass		
Birth Dir.	Wean Dir.	Wean Mat.	Scr. Circ.	Heifer Fert.	Cow Fert.	Longev.	Post Wean	ADG	FCR	Mature Weight	Height	Length	EMA	Fat	Mar
90	118	107	102	96	110	114	123	116	106	113	89	108	144	58	99

Wean Index	365D Index	540D Index	ADG Index	FCR Index	Scrotum	LH
114	-	-	116	-	342	1.22

Myostatin	
Q204X	1
NT821	0
F94L	0

REMARKS: Gebruik in komm kudde, Behou een mede eien-aarskap

LOGIX EBV Analysis: 2023-06-19

LOT 9 P.F. SCHEEPERS

CEP 200433
2020-08-09
SP

Parentage Sire Dam

DNA

Genomic

LAR 140064 HH(c)

LAR 090281

LAR 110039 HH(c)
AGE/CALV. 11/8
AVG. WJ/CALV. 107/8
ICP 403

CEF 100481

CEF 140126
AGE/CALV. 8/6
AVG. WJ/CALV. 103/6
ICP 366

CEF 040062
AGE/CALV. 11/9
AVG. WJ/CALV. 98/8
ICP 360

LAR 070090

LAR 050151
AGE/CALV. 17/13
AVG. WJ/CALV. 103/13

LAR 060224

LAR 080245
AGE/CALV. 14/11
AVG. WJ/CALV. 103/10

CEF 080451

CEF 070064
AGE/CALV. 11/8
AVG. WJ/CALV. 101/8

CEF 010357

CEF 000116
AGE/CALV. 16/10
AVG. WJ/CALV. 102/9

Calving Ease Value	Weaner Calf Value	Fertility Value	Maintenance Value	Cow Value	Growth Value	Carcass Value
98	99	107	80	102	114	106

Calf and Mother			Fertility				Post-Wean Growth			Frame			Carcass		
Birth Dir.	Wean Dir.	Wean Mat.	Scr. Circ.	Heifer Fert.	Cow Fert.	Longev.	Post Wean	ADG	FCR	Mature Weight	Height	Length	EMA	Fat	Mar
101	102	110	110	99	107	113	106	108	93	122	104	105	138	70	70

Wean Index	365D Index	540D Index	ADG Index	FCR Index	Scrotum	LH
93	-	-	123	-	359	1.17

Myostatin	
Q204X	1
NT821	0
F94L	0

REMARKS: Gebruik in komm kudde

LOGIX EBV Analysis: 2023-06-19

BULLE

LOT 10 P.F. SCHEEPERS

CEM 170481

CEM 200437
2020-08-16 SP

Ouerskap Vaar Moer

DNS

Genomies

CEM 180160
OUD/KALW. 4/3
GEM. SI/KALW. 97/2
TKP 423

CEM 140051
OUD/KALW. 9/7
GEM. SI/KALW. 108/6
TKP 365

CEM 130127
OUD/KALW. 9/6
GEM. SI/KALW. 99/6
TKP 472

CEM 100304 HH(c)

CEM 090135
OUD/KALW. 13/11
GEM. SI/KALW. 106/9

AG 100194

CEM 090225
OUD/KALW. 13/10
GEM. SI/KALW. 100/11

LAR 090281

CEM 110039 HH(c)
OUD/KALW. 11/8
GEM. SI/KALW. 107/8

GCD 090102

CEM 070226
OUD/KALW. 7/4
GEM. SI/KALW. 99/4

Geboortegemak Waarde	Speenkalf Waarde	Vrugbaarheids-waarde	Onderhouds-waarde	Koeiwaarde	Groei-waarde	Karkas-waarde
85	106	101	77	97	97	101

Kalf en Moeder			Vrugbaarheid				Na-Speen Groei			Raam		Karkas			
Geb. Dir.	Spn. Dir.	Spn. Mat.	Skr. Omtr.	Vers Vrugb.	Koei Vrugb.	Lankl.	Na-Speen	GDT	VOV	Volw. Gewig	Hoogte	Lengte	OSO	Vet	Mar
83	120	90	105	97	100	113	108	95	90	128	87	100	121	74	106

Spn. Indeks	365D Indeks	540D Indeks	GDT Indeks	VOV Indeks	Skrotum	LH
98	-	-	92	-	350	1.22

Miostation	
Q204X	0
NT821	0
F94L	0

OPMERKINGS:

LOGIX EBV Analise: 2023-06-19

LOT 11 P.F. SCHEEPERS

CEM 150315

CEM 200529
2020-09-20 SP

Ouerskap Vaar Moer

DNS

Genomies

CEM 140100
OUD/KALW. 8/5
GEM. SI/KALW. 101/5
TKP 411

CEM 050121
OUD/KALW. 12/10
GEM. SI/KALW. 99/10
TKP 363

KHB 110046

CEM 110164
OUD/KALW. 7/4
GEM. SI/KALW. 105/4
TKP 375

CEM 100304 HH(c)

CEM 080025

CEM 070151
OUD/KALW. 15/13
GEM. SI/KALW. 101/12

CEM 010375

CEM 960097
OUD/KALW. 10/8
GEM. SI/KALW. 103/8

ZAK 060046

KHB 030175
OUD/KALW. 11/8
GEM. SI/KALW. 97/8

CEM 080426

CEM 080240
OUD/KALW. 5/2
GEM. SI/KALW. 98/2

Geboortegemak Waarde	Speenkalf Waarde	Vrugbaarheids-waarde	Onderhouds-waarde	Koeiwaarde	Groei-waarde	Karkas-waarde
105	101	100	86	98	102	104

Kalf en Moeder			Vrugbaarheid				Na-Speen Groei			Raam		Karkas			
Geb. Dir.	Spn. Dir.	Spn. Mat.	Skr. Omtr.	Vers Vrugb.	Koei Vrugb.	Lankl.	Na-Speen	GDT	VOV	Volw. Gewig	Hoogte	Lengte	OSO	Vet	Mar
101	108	89	86	94	100	113	104	102	101	115	94	107	110	74	64

Spn. Indeks	365D Indeks	540D Indeks	GDT Indeks	VOV Indeks	Skrotum	LH
95	-	-	96	-	340	1.24

Miostation	
Q204X	1
NT821	0
F94L	0

OPMERKINGS:

LOGIX EBV Analise: 2023-06-19

LOT 12 P.F. SCHEEPERS

LAR 160004

CEM 200327
2020-03-06 SP

Ouerskap Vaar Moer

DNS

Genomies

CEM 120141
OUD/KALW. 10/8
GEM. SI/KALW. 106/7
TKP 404

LAR 120455

LAR 050072
OUD/KALW. 10/8
GEM. SI/KALW. 105/7
TKP 396

CEM 100481

CEM 100086
OUD/KALW. 4/1
GEM. SI/KALW. 98/1
TKP -

LAR 090349

LAR 050015
OUD/KALW. 10/8
GEM. SI/KALW. 108/7

LAR 030066

LAR 020293
OUD/KALW. 10/7
GEM. SI/KALW. 107/7

CEM 080451

CEM 070064
OUD/KALW. 11/8
GEM. SI/KALW. 101/8

CEM 040323

CEM 040196
OUD/KALW. 9/5
GEM. SI/KALW. 108/6

Geboortegemak Waarde	Speenkalf Waarde	Vrugbaarheids-waarde	Onderhouds-waarde	Koeiwaarde	Groei-waarde	Karkas-waarde
101	112	96	103	111	119	109

Kalf en Moeder			Vrugbaarheid				Na-Speen Groei			Raam		Karkas			
Geb. Dir.	Spn. Dir.	Spn. Mat.	Skr. Omtr.	Vers Vrugb.	Koei Vrugb.	Lankl.	Na-Speen	GDT	VOV	Volw. Gewig	Hoogte	Lengte	OSO	Vet	Mar
102	97	131	88	87	94	121	108	118	108	94	74	94	114	78	92

Spn. Indeks	365D Indeks	540D Indeks	GDT Indeks	VOV Indeks	Skrotum	LH
105	-	-	127	-	364	1.19

Miostation	
Q204X	1
NT821	0
F94L	0

OPMERKINGS: Gebruik bul in kudde 11 Gem GM 33kg

LOGIX EBV Analise: 2023-06-19

BULLS

LOT 13 P.F. SCHEEPERS

CEP 200382
2020-04-21 SP

Parentage Sire Dam

DNA

Genomic

VV 160038

VV 070239
AGE/CALV. 15/14
AVG. WJ/CALV. 100/14
ICP 375

CEF 140440

CEF 160123
AGE/CALV. 6/5
AVG. WJ/CALV. 100/4
ICP 384

CEF 140062
AGE/CALV. 6/4
AVG. WJ/CALV. 97/4
ICP 367

AG 090226

VV 050452
AGE/CALV. 11/9
AVG. WJ/CALV. 101/9

VV 040322

VV 010386
AGE/CALV. 10/8
AVG. WJ/CALV. 103/8

CEF 100304 HH(c)

CEF 050145
AGE/CALV. 15/13
AVG. WJ/CALV. 97/12

RCO 070009

CEF 100110
AGE/CALV. 9/8
AVG. WJ/CALV. 108/7

Calving Ease Value	Weaner Calf Value	Fertility Value	Maintenance Value	Cow Value	Growth Value	Carcass Value
128	94	109	101	103	112	108

Calf and Mother			Fertility				Post-Wean Growth			Frame			Carcass		
Birth Dir.	Wean Dir.	Wean Mat.	Scr. Circ.	Heifer Fert.	Cow Fert.	Longev.	Post Wean	ADG	FCR	Mature Weight	Height	Length	EMA	Fat	Mar
122	94	77	93	108	97	116	94	105	98	99	89	100	114	126	86

Wean Index	365D Index	540D Index	ADG Index	FCR Index	Scrotum	LH
100	-	-	95	-	346	1.22

Myostatin	
Q204X	1
NT821	0
F94L	0

REMARKS: Gebruik in kommel kudde

LOGIX EBV Analysis: 2023-06-19

LOT 14 P.F. SCHEEPERS

CEP 200439
2020-08-13 SP

Parentage Sire Dam

DNA

Genomic

LAR 140064 HH(c)

LAR 090281

LAR 110039 HH(c)
AGE/CALV. 11/8
AVG. WJ/CALV. 103/8
ICP 403

CEF 130364

CEF 150256
AGE/CALV. 6/4
AVG. WJ/CALV. 103/4
ICP 439

CEF 120085
AGE/CALV. 5/3
AVG. WJ/CALV. 109/2
ICP 393

LAR 070090

LAR 050151
AGE/CALV. 17/13
AVG. WJ/CALV. 103/13

LAR 060224

LAR 080245
AGE/CALV. 14/11
AVG. WJ/CALV. 103/10

CEF 110301 HH(c)

CEF 100009
AGE/CALV. 7/5
AVG. WJ/CALV. 97/4

AG 070433

CEF 080133
AGE/CALV. 9/7
AVG. WJ/CALV. 110/7

Calving Ease Value	Weaner Calf Value	Fertility Value	Maintenance Value	Cow Value	Growth Value	Carcass Value
105	110	95	76	102	104	110

Calf and Mother			Fertility				Post-Wean Growth			Frame			Carcass		
Birth Dir.	Wean Dir.	Wean Mat.	Scr. Circ.	Heifer Fert.	Cow Fert.	Longev.	Post Wean	ADG	FCR	Mature Weight	Height	Length	EMA	Fat	Mar
104	116	96	120	91	95	113	108	110	110	129	107	101	124	87	96

Wean Index	365D Index	540D Index	ADG Index	FCR Index	Scrotum	LH
108	-	-	92	-	356	1.15

Myostatin	
Q204X	0
NT821	0
F94L	0

REMARKS: Goed vir verse

LOGIX EBV Analysis: 2023-06-19

LOT 15 P.F. SCHEEPERS

CEP 210336
2021-03-17 SP

Parentage Sire Dam

DNA

Genomic

CEF 180480

CEF 130161
AGE/CALV. 6/4
AVG. WJ/CALV. 128/2
ICP 412

VV 140338

VV 110010
AGE/CALV. 12/10
AVG. WJ/CALV. 105/9
ICP 369

CEF 110301 HH(c)

CEF 100161
AGE/CALV. 12/9
AVG. WJ/CALV. 103/7

HWB 080171

CEF 100096
AGE/CALV. 4/2
AVG. WJ/CALV. 107/2

VV 120139 HH(c)

VV 010207
AGE/CALV. 16/14
AVG. WJ/CALV. 97/14

VV 080035

VV 080277
AGE/CALV. 5/2
AVG. WJ/CALV. 111/2

Calving Ease Value	Weaner Calf Value	Fertility Value	Maintenance Value	Cow Value	Growth Value	Carcass Value
92	128	104	78	117	132	137

Calf and Mother			Fertility				Post-Wean Growth			Frame			Carcass		
Birth Dir.	Wean Dir.	Wean Mat.	Scr. Circ.	Heifer Fert.	Cow Fert.	Longev.	Post Wean	ADG	FCR	Mature Weight	Height	Length	EMA	Fat	Mar
91	136	94	131	91	114	109	138	124	107	126	109	127	139	95	147

Wean Index	365D Index	540D Index	ADG Index	FCR Index	Scrotum	LH
107	-	-	128	-	364	1.23

Myostatin	
Q204X	0
NT821	0
F94L	0

REMARKS: Behou een mede eienaarskap

LOGIX EBV Analysis: 2023-06-19

BULLE

LOT 16 P.F. SCHEEPERS

CE210332
2021-03-13
SP

Ouerskap Vaar Moer

DNS

Genomies

CE180480

☞ CEF 130317 HH(c)

☞ CEF 130161
OUD/KALW. 6/4
GEM. SI/KALW. 128/2
TKP 412

☞ CEF 150335

☞ CEF 170211
OUD/KALW. 5/3
GEM. SI/KALW. 103/2
TKP 371

☞ CEF 140062
OUD/KALW. 6/4
GEM. SI/KALW. 97/4
TKP 367

☞ CEF 110301 HH(c)

☞ CEF 100161
OUD/KALW. 12/9
GEM. SI/KALW. 103/7

☞ HWB 080171

☞ CEF 100096
OUD/KALW. 4/2
GEM. SI/KALW. 107/2

☞ CEF 130322

☞ CEF 120230
OUD/KALW. 7/5
GEM. SI/KALW. 92/5

☞ RCO 070009

☞ CEF 100110
OUD/KALW. 9/8
GEM. SI/KALW. 108/7

Geboortegemak Waarde	Speenkalf Waarde	Vrugbaarheids-waarde	Onderhouds-waarde	Koeiwaarde	Groei-waarde	Karkas-waarde
89	121	96	81	107	149	143

Kalf en Moeder			Vrugbaarheid				Na-Speen Groei			Raam		Karkas			
Geb. Dir.	Spn. Dir.	Spn. Mat.	Skr. Omtr.	Vers Vrugb.	Koei Vrugb.	Lankl.	Na-Speen	GDT	VOV	Volw. Gewig	Hoogte	Lengte	OSO	Vet	Mar
88	133	87	129	84	110	106	141	135	107	123	124	136	133	126	147

Spn. Indeks	365D Indeks	540D Indeks	GDT Indeks	VOV Indeks	Skrotum	LH
107	-	-	134	-	383	1.21

Miostation	
Q204X	0
NT821	0
F94L	0

OPMERKINGS: **LOGIX** EBV Analise: 2023-06-19

LOT 17 P.F. SCHEEPERS

CE210304
2021-02-16
SP

Ouerskap Vaar Moer

DNS

Genomies

AG170081

☞ AG 130024 HH(c)

☞ AG 090133
OUD/KALW. 13/12
GEM. SI/KALW. 107/11
TKP 375

☞ CEF 160326

☞ CEF 180031
OUD/KALW. 5/3
GEM. SI/KALW. 94/3
TKP 392

☞ CEF 150238
OUD/KALW. 7/5
GEM. SI/KALW. 93/4
TKP 419

AG 090751

☞ HJB 030230
OUD/KALW. 14/9
GEM. SI/KALW. 99/8

☞ FCT 060109

☞ AG 070402
OUD/KALW. 14/10
GEM. SI/KALW. 108/10

☞ CEF 130548 HH(c)

☞ CEF 130065
OUD/KALW. 4/1
GEM. SI/KALW. 113/1

☞ CEF 130479

☞ CEF 130045
OUD/KALW. 10/8
GEM. SI/KALW. 94/7

Geboortegemak Waarde	Speenkalf Waarde	Vrugbaarheids-waarde	Onderhouds-waarde	Koeiwaarde	Groei-waarde	Karkas-waarde
123	102	107	123	113	108	102

Kalf en Moeder			Vrugbaarheid				Na-Speen Groei			Raam		Karkas			
Geb. Dir.	Spn. Dir.	Spn. Mat.	Skr. Omtr.	Vers Vrugb.	Koei Vrugb.	Lankl.	Na-Speen	GDT	VOV	Volw. Gewig	Hoogte	Lengte	OSO	Vet	Mar
123	92	91	97	103	97	120	96	99	94	80	88	91	87	151	113

Spn. Indeks	365D Indeks	540D Indeks	GDT Indeks	VOV Indeks	Skrotum	LH
90	-	-	107	-	367	1.18

Miostation	
Q204X	0
NT821	0
F94L	0

OPMERKINGS: Goed vir verse **LOGIX** EBV Analise: 2023-06-19

LOT 18 P.F. SCHEEPERS

CE210342
2021-03-21
SP

Ouerskap Vaar Moer

DNS

Genomies

CE150315

☞ CEF 100304 HH(c)

☞ CEF 050121
OUD/KALW. 12/10
GEM. SI/KALW. 99/10
TKP 363

☞ VV 130022

☞ VV 160201
OUD/KALW. 6/5
GEM. SI/KALW. 109/4
TKP 385

☞ VV 140059
OUD/KALW. 5/2
GEM. SI/KALW. 119/2
TKP 376

☞ CEF 080025

☞ CEF 070151
OUD/KALW. 15/13
GEM. SI/KALW. 101/12

☞ CEF 010375

☞ CEF 960097
OUD/KALW. 10/8
GEM. SI/KALW. 103/8

☞ VV 100095

☞ VV 030262
OUD/KALW. 13/9
GEM. SI/KALW. 108/8

☞ VV 110178

☞ VV 100053
OUD/KALW. 7/3
GEM. SI/KALW. 101/3

Geboortegemak Waarde	Speenkalf Waarde	Vrugbaarheids-waarde	Onderhouds-waarde	Koeiwaarde	Groei-waarde	Karkas-waarde
83	120	103	88	111	116	124

Kalf en Moeder			Vrugbaarheid				Na-Speen Groei			Raam		Karkas			
Geb. Dir.	Spn. Dir.	Spn. Mat.	Skr. Omtr.	Vers Vrugb.	Koei Vrugb.	Lankl.	Na-Speen	GDT	VOV	Volw. Gewig	Hoogte	Lengte	OSO	Vet	Mar
79	125	103	100	97	103	111	118	117	118	112	102	112	127	97	58

Spn. Indeks	365D Indeks	540D Indeks	GDT Indeks	VOV Indeks	Skrotum	LH
111	-	-	107	-	366	1.18

Miostation	
Q204X	1
NT821	0
F94L	0

OPMERKINGS: **LOGIX** EBV Analise: 2023-06-19

BULLS

LOT 19 P.F. SCHEEPERS

CEM 210367
2021-03-29
SP

Parentage Sire Dam

DNA

Genomic

CEM 180480

☞ CEF 130317 HH(c)

☞ CEF 130161
AGE/CALV. 6/4
AVG. WJ/CALV. 128/2
ICP 412

☞ CEF 130548 HH(c)

☞ CEF 120065
AGE/CALV. 11/9
AVG. WJ/CALV. 108/10
ICP 365

☞ CEF 110301 HH(c)

☞ CEF 100161
AGE/CALV. 12/9
AVG. WJ/CALV. 103/7

☞ HWB 080171

☞ CEF 100096
AGE/CALV. 4/2
AVG. WJ/CALV. 107/2

☞ GJN 100238

☞ CEF 110046
AGE/CALV. 12/9
AVG. WJ/CALV. 107/9

☞ AG 070433

☞ CEF 080099
AGE/CALV. 7/4
AVG. WJ/CALV. 94/4

Calving Ease Value	Weaner Calf Value	Fertility Value	Maintenance Value	Cow Value	Growth Value	Carcass Value
79	150	112	69	133	131	140

Calf and Mother			Fertility				Post-Wean Growth			Frame			Carcass		
Birth Dir.	Wean Dir.	Wean Mat.	Scr. Circ.	Heifer Fert.	Cow Fert.	Longev.	Post Wean	ADG	FCR	Mature Weight	Height	Length	EMA	Fat	Mar
63	152	110	116	103	113	110	152	134	120	139	114	133	146	81	109

Wean Index	365D Index	540D Index	ADG Index	FCR Index	Scrotum	LH
108	-	-	90	-	335	1.20

Myostatin	
Q204X	1
NT821	0
F94L	0

REMARKS: Behou een mede eienaarskap

LOGIX EBV Analysis: 2023-06-19

LOT 20 P.F. SCHEEPERS

CEM 210339
2021-03-17
SP

Parentage Sire Dam

DNA

Genomic

CEM 180338

☞ CEF 130317 HH(c)

☞ CEF 130147
AGE/CALV. 9/7
AVG. WJ/CALV. 102/7
ICP 369

☞ CEF 130437

☞ CEF 120196
AGE/CALV. 6/4
AVG. WJ/CALV. 93/4
ICP 366

☞ CEF 110301 HH(c)

☞ CEF 100161
AGE/CALV. 12/9
AVG. WJ/CALV. 103/7

☞ GJN 100238

☞ CEF 110101
AGE/CALV. 5/1
AVG. WJ/CALV. 108/1

☞ CEF 110446

☞ CEF 110061
AGE/CALV. 6/1
AVG. WJ/CALV. 110/1

☞ BP 090012

☞ CEF 060035
AGE/CALV. 12/10
AVG. WJ/CALV. 103/9

Calving Ease Value	Weaner Calf Value	Fertility Value	Maintenance Value	Cow Value	Growth Value	Carcass Value
100	100	120	91	111	107	107

Calf and Mother			Fertility				Post-Wean Growth			Frame			Carcass		
Birth Dir.	Wean Dir.	Wean Mat.	Scr. Circ.	Heifer Fert.	Cow Fert.	Longev.	Post Wean	ADG	FCR	Mature Weight	Height	Length	EMA	Fat	Mar
99	100	106	116	112	111	116	104	104	94	108	90	107	106	107	91

Wean Index	365D Index	540D Index	ADG Index	FCR Index	Scrotum	LH
93	-	-	104	-	355	1.22

Myostatin	
Q204X	0
NT821	0
F94L	0

REMARKS:

LOGIX EBV Analysis: 2023-06-19

LOT 21 P.F. SCHEEPERS

CEM 210346
2021-03-22
SP

Parentage Sire Dam

DNA

Genomic

CEM 150315

☞ CEF 100304 HH(c)

☞ CEF 050121
AGE/CALV. 12/10
AVG. WJ/CALV. 99/10
ICP 363

☞ CEF 130317 HH(c)

☞ CEF 130054
AGE/CALV. 10/8
AVG. WJ/CALV. 99/8
ICP 366

☞ CEF 080025

☞ CEF 070151
AGE/CALV. 15/13
AVG. WJ/CALV. 101/12

☞ CEF 010375

☞ CEF 960097
AGE/CALV. 10/8
AVG. WJ/CALV. 103/8

☞ CEF 110301 HH(c)

☞ CEF 100161
AGE/CALV. 12/9
AVG. WJ/CALV. 103/7

☞ WAT 080080

☞ CEF 090222
AGE/CALV. 6/3
AVG. WJ/CALV. 94/3

Calving Ease Value	Weaner Calf Value	Fertility Value	Maintenance Value	Cow Value	Growth Value	Carcass Value
107	101	104	84	100	109	113

Calf and Mother			Fertility				Post-Wean Growth			Frame			Carcass		
Birth Dir.	Wean Dir.	Wean Mat.	Scr. Circ.	Heifer Fert.	Cow Fert.	Longev.	Post Wean	ADG	FCR	Mature Weight	Height	Length	EMA	Fat	Mar
101	110	82	83	96	104	112	109	109	105	119	94	111	127	90	95

Wean Index	365D Index	540D Index	ADG Index	FCR Index	Scrotum	LH
100	-	-	98	-	328	1.23

Myostatin	
Q204X	1
NT821	0
F94L	0

REMARKS:

LOGIX EBV Analysis: 2023-06-19

BULLE

LOT 22 P.F. SCHEEPERS

CEP 210361
2021-03-24 SP

Ouerskap Vaar Moer

DNS

Genomies

QR Code:

CEP 180465 HH(c)
CEP 110036 OUD/KALW. 12/9 GEM. SI/KALW. 100/8 TKP 368
CEP 150360 HH(c)
CEP 170081 OUD/KALW. 6/3 GEM. SI/KALW. 102/3 TKP 441
CEP 140097 OUD/KALW. 8/6 GEM. SI/KALW. 99/4 TKP 391

LAR 140064 HH(c)
LAR 110039 HH(c) OUD/KALW. 11/8 GEM. SI/KALW. 107/8
CEF 080338
CEF 080176 OUD/KALW. 10/6 GEM. SI/KALW. 105/6
CEF 100304 HH(c)
CEF 090135 OUD/KALW. 13/11 GEM. SI/KALW. 106/9
KHB 110046
CEF 110165 OUD/KALW. 11/9 GEM. SI/KALW. 94/8

Geboortegemak Waarde	Speenkalf Waarde	Vrugbaarheids-waarde	Onderhouds-waarde	Koeiwaarde	Groei-waarde	Karkas-waarde
101	124	99	90	115	114	121

Kalf en Moeder			Vrugbaarheid				Na-Speen Groei			Raam		Karkas			
Geb. Dir.	Spn. Dir.	Spn. Mat.	Skr. Omtr.	Vers Vrugb.	Koei Vrugb.	Lankl.	Na-Speen	GDT	VOV	Volw. Gewig	Hoogte	Lengte	OSO	Vet	Mar
100	127	92	107	96	94	114	126	119	109	111	104	114	132	80	90

Spn. Indeks	365D Indeks	540D Indeks	GDT Indeks	VOV Indeks	Skrotum	LH
110	-	-	108	-	360	1.19

Miostation	
Q204X	1
NT821	0
F94L	0

OPMERKINGS:

LOGIX EBV Analise: 2023-06-19

LOT 23 P.F. SCHEEPERS

AG 170081
2017-03-09 SP

Ouerskap Vaar Moer

DNS

Genomies

QR Code:

AG 130024 HH(c)
HJB 030230 OUD/KALW. 14/9 GEM. SI/KALW. 99/8 TKP 407
FCT 060109
AG 090133 OUD/KALW. 13/12 GEM. SI/KALW. 107/11 TKP 375
AG 070402 OUD/KALW. 14/10 GEM. SI/KALW. 108/10 TKP 477

AG 090751
AG 980250 OUD/KALW. 15/11 GEM. SI/KALW. 106/10
LA 980044
HJB 000239 OUD/KALW. 11/8 GEM. SI/KALW. 102/8
FCT 040101
FCT 980024 OUD/KALW. 11/10 GEM. SI/KALW. 100/10
AG 030205
AG 030202 OUD/KALW. 9/7 GEM. SI/KALW. 97/7

Geboortegemak Waarde	Speenkalf Waarde	Vrugbaarheids-waarde	Onderhouds-waarde	Koeiwaarde	Groei-waarde	Karkas-waarde
103	127	106	131	128	137	136

Kalf en Moeder			Vrugbaarheid				Na-Speen Groei			Raam		Karkas			
Geb. Dir.	Spn. Dir.	Spn. Mat.	Skr. Omtr.	Vers Vrugb.	Koei Vrugb.	Lankl.	Na-Speen	GDT	VOV	Volw. Gewig	Hoogte	Lengte	OSO	Vet	Mar
107	118	92	123	99	105	115	120	132	116	70	116	115	120	151	105

Spn. Indeks	365D Indeks	540D Indeks	GDT Indeks	VOV Indeks	Skrotum	LH
115	102	108	-	-	-	-

Miostation	
Q204X	0
NT821	0
F94L	0

OPMERKINGS: Gebruik bul in kudde 123 Gem GM 29kg SP Ind 101

LOGIX EBV Analise: 2023-06-19

LOT 24 P.F. SCHEEPERS

LFR 180022
2018-03-01 SP

Ouerskap Vaar Moer

DNS

Genomies

QR Code:

PAD 100242
EI 020119 OUD/KALW. 17/12 GEM. SI/KALW. 101/12 TKP 412
HJL 070124
LFR 140099 OUD/KALW. 6/4 GEM. SI/KALW. 99/4 TKP 353
LFR 100036 OUD/KALW. 11/8 GEM. SI/KALW. 97/6 TKP 445

BG 960125
CSW 980048 OUD/KALW. 19/14 GEM. SI/KALW. 102/13
CSW 960184
EI 900056 OUD/KALW. 13/11 GEM. SI/KALW. 102/11
JRB 000140
HJL 020175 OUD/KALW. 11/9 GEM. SI/KALW. 103/10
HJL 070214
LFR 070036 OUD/KALW. 3/1 GEM. SI/KALW. 98/1

Geboortegemak Waarde	Speenkalf Waarde	Vrugbaarheids-waarde	Onderhouds-waarde	Koeiwaarde	Groei-waarde	Karkas-waarde
112	94	103	121	100	94	99

Kalf en Moeder			Vrugbaarheid				Na-Speen Groei			Raam		Karkas			
Geb. Dir.	Spn. Dir.	Spn. Mat.	Skr. Omtr.	Vers Vrugb.	Koei Vrugb.	Lankl.	Na-Speen	GDT	VOV	Volw. Gewig	Hoogte	Lengte	OSO	Vet	Mar
108	93	80	95	99	104	104	90	95	98	83	93	97	101	118	92

Spn. Indeks	365D Indeks	540D Indeks	GDT Indeks	VOV Indeks	Skrotum	LH
100	-	-	108	-	372	1.22

Miostation	
Q204X	0
NT821	0
F94L	0

OPMERKINGS: Gebruik bul in kudde en komm kudde 9 Gem GM 27kg

LOGIX EBV Analise: 2023-06-19

BULLS

LOT 25 P.F. SCHEEPERS

LAG 170271
2017-10-17 SP

Parentage Sire Dam

DNA

Genomic

AJF 130415

AG 090762 [CEF 040431
AG 000415
AGE/CALV. 18/13
AVG. WJ/CALV. 104/14

AJF 090388 [AG 040061
AJF 970241
AGE/CALV. 15/12
AVG. WJ/CALV. 98/11

BP 100017 [WCS 060011
BP 070007
AGE/CALV. 11/7
AVG. WJ/CALV. 104/6

LAG 130085 [LAR 070090
AGE/CALV. 9/7
AVG. WJ/CALV. 98/7
ICP 376

LAG 100219 [LAR 030179
AGE/CALV. 8/6
AVG. WJ/CALV. 97/5
ICP 387

Calving Ease Value	Weaner Calf Value	Fertility Value	Maintenance Value	Cow Value	Growth Value	Carcass Value
83	97	100	87	89	105	116

Calf and Mother			Fertility				Post-Wean Growth			Frame			Carcass		
Birth Dir.	Wean Dir.	Wean Mat.	Scr. Circ.	Heifer Fert.	Cow Fert.	Longev.	Post Wean	ADG	FCR	Mature Weight	Height	Length	EMA	Fat	Mar
77	115	78	118	94	104	106	112	113	110	115	128	116	125	99	90

Wean Index	365D Index	540D Index	ADG Index	FCR Index	Scrotum	LH
105	-	-	102	-	372	1.20

Myostatin	
Q204X	Not Tested
NT821	Not Tested
F94L	Not Tested

REMARKS: Gebruik bul in kudde 90 Gem GM 34kg SP Ind 102 **LOGIX** EBV Analysis: 2023-06-19

LOT 26 P.F. SCHEEPERS

CEF 200514
2020-09-10 SP

Parentage Sire Dam

DNA

Genomic

VV 160038

VV 130147 [AG 090226
VV 050452
AGE/CALV. 11/9
AVG. WJ/CALV. 101/9

VV 070239 [VV 040322
AGE/CALV. 15/14
AVG. WJ/CALV. 100/14
ICP 375

CEF 100304 HH(c) [VV 010386
AGE/CALV. 10/8
AVG. WJ/CALV. 103/8

CEF 160069 [CEF 080025
AGE/CALV. 7/5
AVG. WJ/CALV. 111/5
ICP 370

CEF 090054 [CEF 070151
AGE/CALV. 12/9
AVG. WJ/CALV. 104/9
ICP 363

CEF 000112 [GJN 040173
AGE/CALV. 14/11
AVG. WJ/CALV. 108/11

Calving Ease Value	Weaner Calf Value	Fertility Value	Maintenance Value	Cow Value	Growth Value	Carcass Value
115	100	106	90	105	128	121

Calf and Mother			Fertility				Post-Wean Growth			Frame			Carcass		
Birth Dir.	Wean Dir.	Wean Mat.	Scr. Circ.	Heifer Fert.	Cow Fert.	Longev.	Post Wean	ADG	FCR	Mature Weight	Height	Length	EMA	Fat	Mar
113	99	99	123	99	103	113	105	116	103	109	97	103	128	151	92

Wean Index	365D Index	540D Index	ADG Index	FCR Index	Scrotum	LH
102	-	-	122	-	386	1.21

Myostatin	
Q204X	0
NT821	0
F94L	0

REMARKS: **LOGIX** EBV Analysis: 2023-06-19

LOT 27 P.F. SCHEEPERS

CEF 200414
2020-08-03 SP

Parentage Sire Dam

DNA

Genomic

CEF 170443

CEF 130548 HH(c) [GJN 100238
CEF 110046
AGE/CALV. 12/9
AVG. WJ/CALV. 107/9

CEF 100036 HH(c) [GCD 030148
CEF 020206
AGE/CALV. 13/11
AVG. WJ/CALV. 98/11

SYF 120036 [SYF 070036
ADV 040165
AGE/CALV. 18/15
AVG. WJ/CALV. 103/14

CEF 180047 [NPT 070170
AGE/CALV. 5/3
AVG. WJ/CALV. 96/3
ICP 372

CEF 120198 [CEF 070046
AGE/CALV. 10/8
AVG. WJ/CALV. 96/8
ICP 367

Calving Ease Value	Weaner Calf Value	Fertility Value	Maintenance Value	Cow Value	Growth Value	Carcass Value
114	97	117	109	113	99	96

Calf and Mother			Fertility				Post-Wean Growth			Frame			Carcass		
Birth Dir.	Wean Dir.	Wean Mat.	Scr. Circ.	Heifer Fert.	Cow Fert.	Longev.	Post Wean	ADG	FCR	Mature Weight	Height	Length	EMA	Fat	Mar
115	91	100	84	109	109	118	100	96	99	91	77	87	94	93	103

Wean Index	365D Index	540D Index	ADG Index	FCR Index	Scrotum	LH
90	-	-	115	-	336	1.19

Myostatin	
Q204X	0
NT821	0
F94L	0

REMARKS: Goed vir verse **LOGIX** EBV Analysis: 2023-06-19

BULLE

LOT 28 P.F. SCHEEPERS

CEM 200468
2020-08-25 SP

Ouerskap Vaar Moer

DNS

Genomies

CEM 150315

CEM 110117
OUD/KALW. 11/9
GEM. SI/KALW. 103/8
TKP 365

CEM 050121
OUD/KALW. 12/10
GEM. SI/KALW. 99/10
TKP 363

CEM 080437

CEM 090003
OUD/KALW. 3/2
GEM. SI/KALW. 100/1
TKP 421

CEM 100304 HH(c)

CEM 080025

CEM 070151
OUD/KALW. 15/13
GEM. SI/KALW. 101/12

CEM 010375

CEM 960097
OUD/KALW. 10/8
GEM. SI/KALW. 103/8

CEM 040460

CEM 990042
OUD/KALW. 11/9
GEM. SI/KALW. 99/9

CEM 060478

CEM 050108
OUD/KALW. 12/10
GEM. SI/KALW. 106/10

Geboortegemak Waarde	Speenkalf Waarde	Vrugbaarheids-waarde	Onderhouds-waarde	Koeiwaarde	Groei-waarde	Karkas-waarde
92	100	107	91	99	106	101

Kalf en Moeder			Vrugbaarheid				Na-Speen Groei			Raam		Karkas			
Geb. Dir.	Spn. Dir.	Spn. Mat.	Skr. Omtr.	Vers Vrugb.	Koei Vrugb.	Lankl.	Na-Speen	GDT	VOV	Volw. Gewig	Hoogte	Lengte	OSO	Vet	Mar
89	113	82	103	96	113	108	107	102	100	110	100	109	104	85	67

Spn. Indeks	365D Indeks	540D Indeks	GDT Indeks	VOV Indeks	Skrotum	LH
103	-	-	99	-	370	1.23

Miostatien	
Q204X	0
NT821	0
F94L	0

OPMERKINGS:

LOGIX EBV Analise: 2023-06-19

LOT 29 P.F. SCHEEPERS

CEM 200473
2020-08-28 SP

Ouerskap Vaar Moer

DNS ✓

Genomies

CEM 180311

CEM 180204
OUD/KALW. 3/2
GEM. SI/KALW. 107/2
TKP 443

CEM 140095
OUD/KALW. 8/6
GEM. SI/KALW. 92/6
TKP 388

CEM 120216
OUD/KALW. 9/7
GEM. SI/KALW. 103/7
TKP 403

CEM 100304 HH(c)

CEM 050145
OUD/KALW. 15/13
GEM. SI/KALW. 97/12

CEM 120459 HH(c)

CEM 120053
OUD/KALW. 11/9
GEM. SI/KALW. 100/9

GJN 100238

CEM 110046
OUD/KALW. 12/9
GEM. SI/KALW. 107/9

NPT 070170

CEM 070107
OUD/KALW. 14/13
GEM. SI/KALW. 98/12

Geboortegemak Waarde	Speenkalf Waarde	Vrugbaarheids-waarde	Onderhouds-waarde	Koeiwaarde	Groei-waarde	Karkas-waarde
102	105	115	79	110	104	111

Kalf en Moeder			Vrugbaarheid				Na-Speen Groei			Raam		Karkas			
Geb. Dir.	Spn. Dir.	Spn. Mat.	Skr. Omtr.	Vers Vrugb.	Koei Vrugb.	Lankl.	Na-Speen	GDT	VOV	Volw. Gewig	Hoogte	Lengte	OSO	Vet	Mar
102	108	104	92	112	105	110	107	105	104	124	78	96	80	126	105

Spn. Indeks	365D Indeks	540D Indeks	GDT Indeks	VOV Indeks	Skrotum	LH
111	-	-	100	-	344	1.21

Miostatien	
Q204X	0
NT821	0
F94L	0

OPMERKINGS: Goed vir verse

LOGIX EBV Analise: 2023-06-19

LOT 30 P.F. SCHEEPERS

CEM 200438
2020-08-16 SP

Ouerskap Vaar Moer

DNS

Genomies

CEM 160038

CEM 160051
OUD/KALW. 7/5
GEM. SI/KALW. 97/4
TKP 370

CEM 070239
OUD/KALW. 15/14
GEM. SI/KALW. 100/14
TKP 375

CEM 110301 HH(c)

CEM 070151
OUD/KALW. 15/13
GEM. SI/KALW. 101/12
TKP 379

AG 090226

VV 050452
OUD/KALW. 11/9
GEM. SI/KALW. 101/9

VV 040322

VV 010386
OUD/KALW. 10/8
GEM. SI/KALW. 103/8

CEM 080338

CEM 080218
OUD/KALW. 9/6
GEM. SI/KALW. 103/6

CEM 040415

CEM 030096
OUD/KALW. 13/8
GEM. SI/KALW. 105/7

Geboortegemak Waarde	Speenkalf Waarde	Vrugbaarheids-waarde	Onderhouds-waarde	Koeiwaarde	Groei-waarde	Karkas-waarde
114	89	110	84	97	119	111

Kalf en Moeder			Vrugbaarheid				Na-Speen Groei			Raam		Karkas			
Geb. Dir.	Spn. Dir.	Spn. Mat.	Skr. Omtr.	Vers Vrugb.	Koei Vrugb.	Lankl.	Na-Speen	GDT	VOV	Volw. Gewig	Hoogte	Lengte	OSO	Vet	Mar
112	98	84	112	106	101	115	104	107	96	119	91	101	134	111	84

Spn. Indeks	365D Indeks	540D Indeks	GDT Indeks	VOV Indeks	Skrotum	LH
92	-	-	112	-	354	1.21

Miostatien	
Q204X	1
NT821	0
F94L	0

OPMERKINGS:

LOGIX EBV Analise: 2023-06-19

BULLS

LOT 31 P.F. SCHEEPERS

CEP 190424
2019-04-28 SP

Parentage Sire Dam

DNA

Genomic

CEP 150487

CEP 130036
AGE/CALV. 5/3
AVG. WJ/CALV. 108/3
ICP 376

CEP 150121
AGE/CALV. 7/6
AVG. WJ/CALV. 111/4
ICP 353

CEP 070107
AGE/CALV. 14/13
AVG. WJ/CALV. 98/12
ICP 360

GJN 100238

CEF 110301 HH(c)

CEF 130548 HH(c)

CEF 100412

CEF 100152
AGE/CALV. 4/2
AVG. WJ/CALV. 102/1

CEF 080338

CEF 080218
AGE/CALV. 9/6
AVG. WJ/CALV. 103/6

CEF 040431

CEF 030141
AGE/CALV. 13/7
AVG. WJ/CALV. 113/7

Calving Ease Value	Weaner Calf Value	Fertility Value	Maintenance Value	Cow Value	Growth Value	Carcass Value
98	151	93	64	125	151	147

Calf and Mother			Fertility				Post-Wean Growth			Frame			Carcass		
Birth Dir.	Wean Dir.	Wean Mat.	Scr. Circ.	Heifer Fert.	Cow Fert.	Longev.	Post Wean	ADG	FCR	Mature Weight	Height	Length	EMA	Fat	Mar
94	144	116	110	85	101	107	149	140	113	147	123	140	133	106	87

Wean Index	365D Index	540D Index	ADG Index	FCR Index	Scrotum	LH
123	-	-	140	-	325	-

Myostatin	
Q204X	1
NT821	0
F94L	0

REMARKS: Gebruik in komm kudde

LOGIX EBV Analysis: 2023-06-19

LOT 32 P.F. SCHEEPERS

CEP 210355
2021-03-23 SP

Parentage Sire Dam

DNA

Genomic

AG 170081

AG 090133
AGE/CALV. 13/12
AVG. WJ/CALV. 107/11
ICP 375

CEF 150335

CEF 180239
AGE/CALV. 4/3
AVG. WJ/CALV. 112/2
ICP 364

CEF 140024
AGE/CALV. 5/4
AVG. WJ/CALV. 108/2
ICP 363

AG 090751

HJB 030230
AGE/CALV. 14/9
AVG. WJ/CALV. 99/8

FCT 060109

AG 070402
AGE/CALV. 14/10
AVG. WJ/CALV. 108/10

CEF 130322

CEF 120230
AGE/CALV. 7/5
AVG. WJ/CALV. 92/5

AG 100194

CEF 060152
AGE/CALV. 15/11
AVG. WJ/CALV. 106/7

Calving Ease Value	Weaner Calf Value	Fertility Value	Maintenance Value	Cow Value	Growth Value	Carcass Value
107	119	110	117	125	141	134

Calf and Mother			Fertility				Post-Wean Growth			Frame			Carcass		
Birth Dir.	Wean Dir.	Wean Mat.	Scr. Circ.	Heifer Fert.	Cow Fert.	Longev.	Post Wean	ADG	FCR	Mature Weight	Height	Length	EMA	Fat	Mar
112	111	100	129	101	112	111	123	132	112	85	117	123	143	117	123

Wean Index	365D Index	540D Index	ADG Index	FCR Index	Scrotum	LH
109	-	-	127	-	383	1.22

Myostatin	
Q204X	1
NT821	0
F94L	0

REMARKS:

LOGIX EBV Analysis: 2023-06-19

LOT 33 P.F. SCHEEPERS

CEP 210306
2021-02-20 SP

Parentage Sire Dam

DNA

Genomic

AG 170081

AG 090133
AGE/CALV. 13/12
AVG. WJ/CALV. 107/11
ICP 375

CEF 160490

CEF 180257
AGE/CALV. 4/2
AVG. WJ/CALV. 105/2
ICP 379

VV 130074
AGE/CALV. 10/8
AVG. WJ/CALV. 100/8
ICP 363

AG 090751

HJB 030230
AGE/CALV. 14/9
AVG. WJ/CALV. 99/8

FCT 060109

AG 070402
AGE/CALV. 14/10
AVG. WJ/CALV. 108/10

CEF 100304 HH(c)

CEF 060200
AGE/CALV. 12/8
AVG. WJ/CALV. 110/8

VV 100521

VV 010365
AGE/CALV. 15/11
AVG. WJ/CALV. 104/10

Calving Ease Value	Weaner Calf Value	Fertility Value	Maintenance Value	Cow Value	Growth Value	Carcass Value
97	124	110	102	123	136	134

Calf and Mother			Fertility				Post-Wean Growth			Frame			Carcass		
Birth Dir.	Wean Dir.	Wean Mat.	Scr. Circ.	Heifer Fert.	Cow Fert.	Longev.	Post Wean	ADG	FCR	Mature Weight	Height	Length	EMA	Fat	Mar
99	124	96	105	102	108	116	127	133	119	96	131	128	129	144	94

Wean Index	365D Index	540D Index	ADG Index	FCR Index	Scrotum	LH
119	-	-	115	-	344	1.19

Myostatin	
Q204X	0
NT821	0
F94L	0

REMARKS: Goed vir verse

LOGIX EBV Analysis: 2023-06-19

BULLE

LOT 34 P.F. SCHEEPERS

AG 170081

CE210301
2021-02-12
SP

Ouerskap Vaar Moer

DNS

Genomies

AG 090133
OUD/KALW. 13/12
GEM. SI/KALW. 107/11
TKP 375

AG 130024 HH(c)

AG 090751
HJB 030230
OUD/KALW. 14/9
GEM. SI/KALW. 99/8

FCT 060109

AG 070402
OUD/KALW. 14/10
GEM. SI/KALW. 108/10

GJN 100238

CE218138
OUD/KALW. 4/2
GEM. SI/KALW. 106/2
TKP 623

CE210046
OUD/KALW. 12/9
GEM. SI/KALW. 107/9

CE2106349

CE210136
OUD/KALW. 17/11
GEM. SI/KALW. 102/9

Geboortegemak Waarde	Speenkalf Waarde	Vrugbaarheids-waarde	Onderhouds-waarde	Koeiwaarde	Groei-waarde	Karkas-waarde
99	117	103	99	115	136	137

Kalf en Moeder			Vrugbaarheid				Na-Speen Groei			Raam		Karkas			
Geb. Dir.	Spn. Dir.	Spn. Mat.	Skr. Omtr.	Vers Vrugb.	Koei Vrugb.	Lankl.	Na-Speen	GDT	VOV	Volw. Gewig	Hoogte	Lengte	OSO	Vet	Mar
103	117	99	106	101	96	115	130	130	114	99	112	121	132	151	114

Spn. Indeks	365D Indeks	540D Indeks	GDT Indeks	VOV Indeks	Skrotum	LH
102	-	-	133	-	343	1.23

Miostatien	
Q204X	0
NT821	0
F94L	0

OPMERKINGS: Goed vir verse

LOGIX EBV Analise: 2023-06-19

LOT 35 P.F. SCHEEPERS

CE2170445

CE210364
2021-03-25
SP

Ouerskap Vaar Moer

DNS

Genomies

CE2120040
OUD/KALW. 11/9
GEM. SI/KALW. 98/8
TKP 388

CE2130548 HH(c)

GJN 100238

CE2110046
OUD/KALW. 12/9
GEM. SI/KALW. 107/9

CE21080426

CE21080177
OUD/KALW. 7/4
GEM. SI/KALW. 102/4

SYF 070036

ADV 040165
OUD/KALW. 18/15
GEM. SI/KALW. 103/14

CE21080391

CE21110135
OUD/KALW. 6/3
GEM. SI/KALW. 94/3
TKP 379

CE21020092
OUD/KALW. 11/9
GEM. SI/KALW. 99/9

Geboortegemak Waarde	Speenkalf Waarde	Vrugbaarheids-waarde	Onderhouds-waarde	Koeiwaarde	Groei-waarde	Karkas-waarde
106	105	117	103	114	100	101

Kalf en Moeder			Vrugbaarheid				Na-Speen Groei			Raam		Karkas			
Geb. Dir.	Spn. Dir.	Spn. Mat.	Skr. Omtr.	Vers Vrugb.	Koei Vrugb.	Lankl.	Na-Speen	GDT	VOV	Volw. Gewig	Hoogte	Lengte	OSO	Vet	Mar
103	106	90	100	115	102	115	109	102	100	96	97	110	107	80	95

Spn. Indeks	365D Indeks	540D Indeks	GDT Indeks	VOV Indeks	Skrotum	LH
92	-	-	99	-	368	1.22

Miostatien	
Q204X	0
NT821	0
F94L	0

OPMERKINGS: Goed vir verse

LOGIX EBV Analise: 2023-06-19

LOT 36 P.F. SCHEEPERS

CE21150315

CE210347
2021-03-22
SP

Ouerskap Vaar Moer

DNS

Genomies

CE21050121
OUD/KALW. 12/10
GEM. SI/KALW. 99/10
TKP 363

CE21100304 HH(c)

CE21080025

CE21070151
OUD/KALW. 15/13
GEM. SI/KALW. 101/12

CE21010375

CE21960097
OUD/KALW. 10/8
GEM. SI/KALW. 103/8

CE21110301 HH(c)

CE21100161
OUD/KALW. 12/9
GEM. SI/KALW. 103/7

CE21100412

CE21100152
OUD/KALW. 4/2
GEM. SI/KALW. 102/1

CE21130036
OUD/KALW. 5/3
GEM. SI/KALW. 108/3
TKP 376

Geboortegemak Waarde	Speenkalf Waarde	Vrugbaarheids-waarde	Onderhouds-waarde	Koeiwaarde	Groei-waarde	Karkas-waarde
106	88	106	95	92	99	100

Kalf en Moeder			Vrugbaarheid				Na-Speen Groei			Raam		Karkas			
Geb. Dir.	Spn. Dir.	Spn. Mat.	Skr. Omtr.	Vers Vrugb.	Koei Vrugb.	Lankl.	Na-Speen	GDT	VOV	Volw. Gewig	Hoogte	Lengte	OSO	Vet	Mar
101	101	71	87	96	110	109	97	95	96	105	82	95	97	98	73

Spn. Indeks	365D Indeks	540D Indeks	GDT Indeks	VOV Indeks	Skrotum	LH
90	-	-	91	-	356	1.18

Miostatien	
Q204X	0
NT821	0
F94L	0

OPMERKINGS:

LOGIX EBV Analise: 2023-06-19

BULLS

LOT 37 P.F. SCHEEPERS

CE210373
2021-04-03 SP

Parentage Sire Dam
DNA
Genomic

CE210373 QR

CE140245
AGE/CALV. 8/6
AVG. WJ/CALV. 102/5
ICP 454

CE110036
AGE/CALV. 12/9
AVG. WJ/CALV. 100/8
ICP 368

CE120436

CE120072
AGE/CALV. 5/3
AVG. WJ/CALV. 97/2
ICP 370

LAR 140064 HH(c)

CE110039 HH(c)
AGE/CALV. 11/8
AVG. WJ/CALV. 107/8

CE080338

CE080176
AGE/CALV. 10/6
AVG. WJ/CALV. 105/6

CE100481

CE100058
AGE/CALV. 7/6
AVG. WJ/CALV. 101/6

CE100330

CE090121
AGE/CALV. 13/11
AVG. WJ/CALV. 111/10

Calving Ease Value	Weaner Calf Value	Fertility Value	Maintenance Value	Cow Value	Growth Value	Carcass Value
100	112	110	93	114	103	108

Calf and Mother			Fertility				Post-Wean Growth			Frame			Carcass		
Birth Dir.	Wean Dir.	Wean Mat.	Scr. Circ.	Heifer Fert.	Cow Fert.	Longev.	Post Wean	ADG	FCR	Mature Weight	Height	Length	EMA	Fat	Mar
100	110	107	105	109	101	110	110	113	110	105	97	106	135	88	92

Wean Index	365D Index	540D Index	ADG Index	FCR Index	Scrotum	LH
103	-	-	92	-	354	1.20

Myostatin	
Q204X	1
NT821	0
F94L	0

REMARKS:

LOGIX EBV Analysis: 2023-06-19

LOT 38 P.F. SCHEEPERS

CE210308
2021-02-24 SP

Parentage Sire Dam
DNA
Genomic

CE210308 QR

CE180123
AGE/CALV. 5/2
AVG. WJ/CALV. 109/2
ICP 428

AG 170081

AG 090133
AGE/CALV. 13/12
AVG. WJ/CALV. 107/11
ICP 375

BBM 140034 HH(c)

CE160099
AGE/CALV. 6/4
AVG. WJ/CALV. 103/4
ICP 372

AG 130024 HH(c)

AG 090751

HJB 030230
AGE/CALV. 14/9
AVG. WJ/CALV. 99/8

FCT 060109

AG 070402
AGE/CALV. 14/10
AVG. WJ/CALV. 108/10

BBM 080070

JRB 030026
AGE/CALV. 18/14
AVG. WJ/CALV. 109/13

MCU 090078 P

CE110018
AGE/CALV. 12/9
AVG. WJ/CALV. 105/9

Calving Ease Value	Weaner Calf Value	Fertility Value	Maintenance Value	Cow Value	Growth Value	Carcass Value
99	129	102	123	125	122	131

Calf and Mother			Fertility				Post-Wean Growth			Frame			Carcass		
Birth Dir.	Wean Dir.	Wean Mat.	Scr. Circ.	Heifer Fert.	Cow Fert.	Longev.	Post Wean	ADG	FCR	Mature Weight	Height	Length	EMA	Fat	Mar
99	120	96	124	92	105	114	114	124	114	80	113	115	116	151	101

Wean Index	365D Index	540D Index	ADG Index	FCR Index	Scrotum	LH
122	-	-	106	-	363	1.18

Myostatin	
Q204X	0
NT821	0
F94L	0

REMARKS: Goed vir verse

LOGIX EBV Analysis: 2023-06-19

LOT 39 P.F. SCHEEPERS

CE210321
2021-03-05 SP

Parentage Sire Dam
DNA
Genomic

CE210321 QR

CE140082
AGE/CALV. 9/7
AVG. WJ/CALV. 104/5
ICP 372

CE150315

CE100304 HH(c)

CE050121
AGE/CALV. 12/10
AVG. WJ/CALV. 99/10
ICP 363

BP 090012

CE090010
AGE/CALV. 12/7
AVG. WJ/CALV. 94/7
ICP 434

CE080025

CE070151
AGE/CALV. 15/13
AVG. WJ/CALV. 101/12

CE010375

CE0960097
AGE/CALV. 10/8
AVG. WJ/CALV. 103/8

BP 060021

BP 060012
AGE/CALV. 9/6
AVG. WJ/CALV. 108/6

CE060309

CE060120
AGE/CALV. 11/7
AVG. WJ/CALV. 102/6

Calving Ease Value	Weaner Calf Value	Fertility Value	Maintenance Value	Cow Value	Growth Value	Carcass Value
89	108	98	94	100	95	103

Calf and Mother			Fertility				Post-Wean Growth			Frame			Carcass		
Birth Dir.	Wean Dir.	Wean Mat.	Scr. Circ.	Heifer Fert.	Cow Fert.	Longev.	Post Wean	ADG	FCR	Mature Weight	Height	Length	EMA	Fat	Mar
84	115	92	84	87	108	106	106	101	104	105	106	114	106	78	56

Wean Index	365D Index	540D Index	ADG Index	FCR Index	Scrotum	LH
103	-	-	90	-	331	1.21

Myostatin	
Q204X	0
NT821	0
F94L	0

REMARKS:

LOGIX EBV Analysis: 2023-06-19

BULLE

LOT 40 P.F. SCHEEPERS

CEP 210369
2021-03-31
SP

Ouerskap Vaar Moer

DNS

Genomies

CEP 210369 QR

☞ CEF 180465 HH(c)

☞ LAR 140064 HH(c)

☞ LAR 090281

☞ LAR 110039 HH(c)

☞ CEF 110036

☞ CEF 080338

☞ CEF 080176

☞ VV 110238

☞ VV 080162

☞ VV 030320

☞ VV 050399

☞ VV 000371

☞ VV 140512

☞ VV 080343

☞ VV 000371

Geboortegemak Waarde	Speenkalf Waarde	Vrugbaarheids-waarde	Onderhouds-waarde	Koeiwaarde	Groei-waarde	Karkas-waarde
92	119	115	81	120	128	128

Kalf en Moeder			Vrugbaarheid				Na-Speen Groei			Raam		Karkas			
Geb. Dir.	Spn. Dir.	Spn. Mat.	Skr. Omtr.	Vers Vrugb.	Koei Vrugb.	Lankl.	Na-Speen	GDT	VOV	Volw. Gewig	Hoogte	Lengte	OSO	Vet	Mar
92	121	110	117	109	105	120	127	124	109	121	121	125	136	113	93

Spn. Indeks	365D Indeks	540D Indeks	GDT Indeks	VOV Indeks	Skrotum	LH
109	-	-	124	-	360	1.21

Miostatien	
Q204X	0
NT821	0
F94L	0

OPMERKINGS:

LOGIX EBV Analise: 2023-06-19

LOT 41 P.F. SCHEEPERS

CEP 210350
2021-03-22
SP

Ouerskap Vaar Moer

DNS

Genomies

CEP 210350 QR

☞ GJN 120203 HH(c)

☞ GJN 160214 HH(c)

☞ GJN 080021

☞ GJN 100057

☞ AG 100384

☞ GJN 090213

☞ CEF 110446

☞ CEF 110061

☞ CEF 100412

☞ CEF 100214

☞ GJN 140028

☞ GJN 130437

☞ CEF 130014

☞ CEF 160270

☞ CEF 130014

☞ CEF 100214

Geboortegemak Waarde	Speenkalf Waarde	Vrugbaarheids-waarde	Onderhouds-waarde	Koeiwaarde	Groei-waarde	Karkas-waarde
98	123	106	96	120	127	118

Kalf en Moeder			Vrugbaarheid				Na-Speen Groei			Raam		Karkas			
Geb. Dir.	Spn. Dir.	Spn. Mat.	Skr. Omtr.	Vers Vrugb.	Koei Vrugb.	Lankl.	Na-Speen	GDT	VOV	Volw. Gewig	Hoogte	Lengte	OSO	Vet	Mar
97	119	106	113	106	98	109	123	123	112	102	123	125	131	71	128

Spn. Indeks	365D Indeks	540D Indeks	GDT Indeks	VOV Indeks	Skrotum	LH
105	-	-	107	-	368	1.18

Miostatien	
Q204X	0
NT821	0
F94L	0

OPMERKINGS:

LOGIX EBV Analise: 2023-06-19

LOT 42 P.F. SCHEEPERS

CEP 210310
2021-02-25
SP

Ouerskap Vaar Moer

DNS

Genomies

CEP 210310 QR

☞ AG 170081

☞ AG 130024 HH(c)

☞ AG 090751

☞ HJB 030230

☞ FCT 060109

☞ AG 070402

☞ CEF 110301 HH(c)

☞ CEF 100161

☞ GCD 090102

☞ CEF 120168

☞ CEF 070191

☞ AG 090133

☞ CEF 180224

☞ CEF 120168

Geboortegemak Waarde	Speenkalf Waarde	Vrugbaarheids-waarde	Onderhouds-waarde	Koeiwaarde	Groei-waarde	Karkas-waarde
111	111	106	100	112	137	135

Kalf en Moeder			Vrugbaarheid				Na-Speen Groei			Raam		Karkas			
Geb. Dir.	Spn. Dir.	Spn. Mat.	Skr. Omtr.	Vers Vrugb.	Koei Vrugb.	Lankl.	Na-Speen	GDT	VOV	Volw. Gewig	Hoogte	Lengte	OSO	Vet	Mar
113	116	78	111	95	108	115	125	129	108	99	104	116	117	144	120

Spn. Indeks	365D Indeks	540D Indeks	GDT Indeks	VOV Indeks	Skrotum	LH
109	-	-	130	-	344	1.23

Miostatien	
Q204X	0
NT821	0
F94L	0

OPMERKINGS: Goed vir verse

LOGIX EBV Analise: 2023-06-19

BULLS

LOT 43 P.F. SCHEEPERS

CEP 200446
2020-08-14
SP

Parentage Sire Dam
DNA
Genomic

CEP 150013
AGE/CALV. 8/6
AVG. WJ/CALV. 107/6
ICP 378

CEP 050108
AGE/CALV. 12/10
AVG. WJ/CALV. 106/10
ICP 365

LAR 090281

LAR 140064 HH(c)

LAR 110039 HH(c)
AGE/CALV. 11/8
AVG. WJ/CALV. 107/8
ICP 403

CEP 100304 HH(c)

LAR 070090

LAR 050151
AGE/CALV. 17/13
AVG. WJ/CALV. 103/13

LAR 060224

LAR 080245
AGE/CALV. 14/11
AVG. WJ/CALV. 103/10

CEP 080025

CEP 070151
AGE/CALV. 15/13
AVG. WJ/CALV. 101/12

CEP 030424

CEP 020089
AGE/CALV. 11/9
AVG. WJ/CALV. 102/8

Calving Ease Value	Weaner Calf Value	Fertility Value	Maintenance Value	Cow Value	Growth Value	Carcass Value
89	117	113	70	112	132	128

Calf and Mother			Fertility				Post-Wean Growth			Frame			Carcass		
Birth Dir.	Wean Dir.	Wean Mat.	Scr. Circ.	Heifer Fert.	Cow Fert.	Longev.	Post Wean	ADG	FCR	Mature Weight	Height	Length	EMA	Fat	Mar
89	122	108	114	104	109	116	124	126	104	137	107	113	149	112	90

Wean Index	365D Index	540D Index	ADG Index	FCR Index	Scrotum	LH
109	-	-	126	-	358	1.22

Myostatin	
Q204X	0
NT821	0
F94L	0

REMARKS:

LOGIX EBV Analysis: 2023-06-19

LOT 44 P.F. SCHEEPERS

CEP 200415
2020-08-04
SP

Parentage Sire Dam
DNA ✓ ✓
Genomic

CEP 180338

CEP 180036
AGE/CALV. 5/3
AVG. WJ/CALV. 116/4
ICP 374

CEP 130147
AGE/CALV. 9/7
AVG. WJ/CALV. 102/7
ICP 369

CEP 130548 HH(c)

CEP 100139
AGE/CALV. 12/10
AVG. WJ/CALV. 107/10
ICP 392

CEP 130317 HH(c)

GJN 100238

CEP 110101
AGE/CALV. 5/1
AVG. WJ/CALV. 108/1

GJN 100238

CEP 110046
AGE/CALV. 12/9
AVG. WJ/CALV. 107/9

CEP 060478

GBS 020003
AGE/CALV. 10/6
AVG. WJ/CALV. 100/6

CEP 110301 HH(c)

Calving Ease Value	Weaner Calf Value	Fertility Value	Maintenance Value	Cow Value	Growth Value	Carcass Value
104	113	122	86	122	115	122

Calf and Mother			Fertility				Post-Wean Growth			Frame			Carcass		
Birth Dir.	Wean Dir.	Wean Mat.	Scr. Circ.	Heifer Fert.	Cow Fert.	Longev.	Post Wean	ADG	FCR	Mature Weight	Height	Length	EMA	Fat	Mar
102	112	105	136	116	109	119	116	109	96	114	88	115	120	131	127

Wean Index	365D Index	540D Index	ADG Index	FCR Index	Scrotum	LH
102	-	-	109	-	396	1.25

Myostatin	
Q204X	0
NT821	0
F94L	0

REMARKS:

LOGIX EBV Analysis: 2023-06-19

LOT 45 P.F. SCHEEPERS

CEP 200513
2020-09-10
SP

Parentage Sire Dam
DNA
Genomic

CEP 140043
AGE/CALV. 9/7
AVG. WJ/CALV. 105/6
ICP 367

LAR 120455

LAR 050072
AGE/CALV. 10/8
AVG. WJ/CALV. 105/7
ICP 396

RCO 070009

CEP 100225
AGE/CALV. 4/2
AVG. WJ/CALV. 99/2
ICP 362

LAR 090349

LAR 050015
AGE/CALV. 10/8
AVG. WJ/CALV. 108/7

LAR 030066

LAR 020293
AGE/CALV. 10/7
AVG. WJ/CALV. 107/7

RCO 040006

RCO 020071
AGE/CALV. 9/7
AVG. WJ/CALV. 92/6

CEP 070473

CEP 030105
AGE/CALV. 10/8
AVG. WJ/CALV. 100/8

Calving Ease Value	Weaner Calf Value	Fertility Value	Maintenance Value	Cow Value	Growth Value	Carcass Value
92	112	90	80	99	125	122

Calf and Mother			Fertility				Post-Wean Growth			Frame			Carcass		
Birth Dir.	Wean Dir.	Wean Mat.	Scr. Circ.	Heifer Fert.	Cow Fert.	Longev.	Post Wean	ADG	FCR	Mature Weight	Height	Length	EMA	Fat	Mar
90	115	109	93	84	100	107	123	124	108	123	88	110	124	83	94

Wean Index	365D Index	540D Index	ADG Index	FCR Index	Scrotum	LH
108	-	-	112	-	324	1.22

Myostatin	
Q204X	1
NT821	0
F94L	0

REMARKS:

LOGIX EBV Analysis: 2023-06-19

BULLE

LOT 46 P.F. SCHEEPERS

CE200423
2020-08-08
SP

Ouerskap Vaar Moer

DNS

Genomies

CE180338

☞ CEF 130317 HH(c)

CE130147
OUD/KALW. 9/7
GEM. SI/KALW. 102/7
TKP 369

CE150335

CE180064
OUD/KALW. 5/3
GEM. SI/KALW. 94/3
TKP 436

CE140140
OUD/KALW. 6/4
GEM. SI/KALW. 102/4
TKP 364

☞ CEF 110301 HH(c)

CE100161
OUD/KALW. 12/9
GEM. SI/KALW. 103/7

GJN 100238

CE110101
OUD/KALW. 5/1
GEM. SI/KALW. 108/1

CE130322

CE120230
OUD/KALW. 7/5
GEM. SI/KALW. 92/5

☞ CEF 100304 HH(c)

CE070112
OUD/KALW. 9/7
GEM. SI/KALW. 89/7

Geboortegemak Waarde	Speenkalf Waarde	Vrugbaarheids-waarde	Onderhouds-waarde	Koeiwaarde	Groei-waarde	Karkas-waarde
109	88	120	92	102	98	100

Kalf en Moeder			Vrugbaarheid				Na-Speen Groei			Raam		Karkas			
Geb. Dir.	Spn. Dir.	Spn. Mat.	Skr. Omtr.	Vers Vrugb.	Koei Vrugb.	Lankl.	Na-Speen	GDT	VOV	Volw. Gewig	Hoogte	Lengte	OSO	Vet	Mar
105	95	86	95	115	108	115	99	97	91	108	85	105	115	97	100

Spn. Indeks	365D Indeks	540D Indeks	GDT Indeks	VOV Indeks	Skrotum	LH
90	-	-	94	-	327	1.23

Miostatien	
Q204X	0
NT821	0
F94L	0

OPMERKINGS: Goed vir verse

LOGIX EBV Analise: 2023-06-19

LOT 47 P.F. SCHEEPERS

CE200431
2020-08-08
SP

Ouerskap Vaar Moer

DNS

Genomies

CE120120
OUD/KALW. 10/8
GEM. SI/KALW. 110/7
TKP 393

☞ DAJ 150086 HH(c)

TOR 070049

DAJ 120094
OUD/KALW. 8/5
GEM. SI/KALW. 105/5
TKP 416

CE090323

CE090089
OUD/KALW. 7/5
GEM. SI/KALW. 78/3
TKP 423

☞ FCT 000065

RAI 000032
OUD/KALW. 7/6
GEM. SI/KALW. 103/6

LAR 070038

DAJ 080010
OUD/KALW. 11/9
GEM. SI/KALW. 98/8

CE060391

CE060170
OUD/KALW. 10/5
GEM. SI/KALW. 111/4

CE060478

CE050168
OUD/KALW. 13/9
GEM. SI/KALW. 100/9

Geboortegemak Waarde	Speenkalf Waarde	Vrugbaarheids-waarde	Onderhouds-waarde	Koeiwaarde	Groei-waarde	Karkas-waarde
108	116	103	112	119	98	97

Kalf en Moeder			Vrugbaarheid				Na-Speen Groei			Raam		Karkas			
Geb. Dir.	Spn. Dir.	Spn. Mat.	Skr. Omtr.	Vers Vrugb.	Koei Vrugb.	Lankl.	Na-Speen	GDT	VOV	Volw. Gewig	Hoogte	Lengte	OSO	Vet	Mar
107	100	119	111	101	101	108	95	102	114	89	103	94	106	99	94

Spn. Indeks	365D Indeks	540D Indeks	GDT Indeks	VOV Indeks	Skrotum	LH
96	-	-	91	-	382	1.13

Miostatien	
Q204X	0
NT821	0
F94L	0

OPMERKINGS: Goed vir verse

LOGIX EBV Analise: 2023-06-19

LOT 48 P.F. SCHEEPERS

CE200516
2020-09-13
SP

Ouerskap Vaar Moer

DNS

Genomies

CE180335

☞ CEF 130317 HH(c)

CE130217
OUD/KALW. 9/7
GEM. SI/KALW. 102/7
TKP 371

☞ CEF 100304 HH(c)

CE090216
OUD/KALW. 8/6
GEM. SI/KALW. 98/6
TKP 354

☞ CEF 110301 HH(c)

CE100161
OUD/KALW. 12/9
GEM. SI/KALW. 103/7

BP 090012

CE040161
OUD/KALW. 10/8
GEM. SI/KALW. 96/8

CE080025

CE070151
OUD/KALW. 15/13
GEM. SI/KALW. 101/12

CE070477

CE060043
OUD/KALW. 9/7
GEM. SI/KALW. 102/7

Geboortegemak Waarde	Speenkalf Waarde	Vrugbaarheids-waarde	Onderhouds-waarde	Koeiwaarde	Groei-waarde	Karkas-waarde
114	104	106	92	107	117	111

Kalf en Moeder			Vrugbaarheid				Na-Speen Groei			Raam		Karkas			
Geb. Dir.	Spn. Dir.	Spn. Mat.	Skr. Omtr.	Vers Vrugb.	Koei Vrugb.	Lankl.	Na-Speen	GDT	VOV	Volw. Gewig	Hoogte	Lengte	OSO	Vet	Mar
110	106	89	106	90	112	117	102	110	100	108	99	107	103	91	95

Spn. Indeks	365D Indeks	540D Indeks	GDT Indeks	VOV Indeks	Skrotum	LH
106	-	-	103	-	340	1.17

Miostatien	
Q204X	0
NT821	0
F94L	0

OPMERKINGS: Goed vir verse

LOGIX EBV Analise: 2023-06-19

BULLS

LOT 49 P.F. SCHEEPERS

CEF 210338
2021-03-17 SP

Parentage Sire Dam

DNA

Genomic

CEF 180480

☞ CEF 130317 HH(c)

CEF 130161
AGE/CALV. 6/4
AVG. WJ/CALV. 128/2
ICP 412

☞ VV 120286 HH(c)

CEF 170258
AGE/CALV. 5/4
AVG. WJ/CALV. 114/3
ICP 381

VV 080203
AGE/CALV. 10/8
AVG. WJ/CALV. 101/8
ICP 365

☞ CEF 110301 HH(c)

CEF 100161
AGE/CALV. 12/9
AVG. WJ/CALV. 103/7

☞ HWB 080171

CEF 100096
AGE/CALV. 4/2
AVG. WJ/CALV. 107/2

☞ VV 090089

VV 080077
AGE/CALV. 13/10
AVG. WJ/CALV. 108/10

VV 050378 P

☞ VV 040252
AGE/CALV. 12/11
AVG. WJ/CALV. 96/9

Calving Ease Value	Weaner Calf Value	Fertility Value	Maintenance Value	Cow Value	Growth Value	Carcass Value
92	139	102	77	124	142	146

Calf and Mother			Fertility				Post-Wean Growth			Frame			Carcass		
Birth Dir.	Wean Dir.	Wean Mat.	Scr. Circ.	Heifer Fert.	Cow Fert.	Longev.	Post Wean	ADG	FCR	Mature Weight	Height	Length	EMA	Fat	Mar
91	144	97	145	87	113	110	144	137	110	129	127	138	151	108	127

Wean Index	365D Index	540D Index	ADG Index	FCR Index	Scrotum	LH
121	-	-	114	-	381	1.19

Myostatin	
Q204X	1
NT821	0
F94L	0

REMARKS:

LOGIX EBV Analysis: 2023-06-19

LOT 50 P.F. SCHEEPERS

CEF 210331
2021-03-14 SP

Parentage Sire Dam

DNA

Genomic

CEF 180338

☞ CEF 130317 HH(c)

CEF 130147
AGE/CALV. 9/7
AVG. WJ/CALV. 102/7
ICP 369

☞ CEF 100304 HH(c)

CEF 160158
AGE/CALV. 6/5
AVG. WJ/CALV. 97/4
ICP 369

☞ CEF 090026 HH(c)

AGE/CALV. 14/12
AVG. WJ/CALV. 98/11
ICP 371

☞ CEF 110301 HH(c)

CEF 100161
AGE/CALV. 12/9
AVG. WJ/CALV. 103/7

GJN 100238

CEF 110101
AGE/CALV. 5/1
AVG. WJ/CALV. 108/1

CEF 080025

CEF 070151
AGE/CALV. 15/13
AVG. WJ/CALV. 101/12

CEF 060309

CEF 060187
AGE/CALV. 5/0
AVG. WJ/CALV. 102/1

Calving Ease Value	Weaner Calf Value	Fertility Value	Maintenance Value	Cow Value	Growth Value	Carcass Value
110	94	113	95	103	100	101

Calf and Mother			Fertility				Post-Wean Growth			Frame			Carcass		
Birth Dir.	Wean Dir.	Wean Mat.	Scr. Circ.	Heifer Fert.	Cow Fert.	Longev.	Post Wean	ADG	FCR	Mature Weight	Height	Length	EMA	Fat	Mar
107	100	84	108	112	101	112	97	101	94	104	92	108	115	93	106

Wean Index	365D Index	540D Index	ADG Index	FCR Index	Scrotum	LH
97	-	-	90	-	360	1.23

Myostatin	
Q204X	0
NT821	0
F94L	0

REMARKS: Goed vir verse

LOGIX EBV Analysis: 2023-06-19

LOT 51 P.F. SCHEEPERS

CEF 210388
2021-04-19 SP

Parentage Sire Dam

DNA

Genomic

CEF 150315

☞ CEF 100304 HH(c)

CEF 050121
AGE/CALV. 12/10
AVG. WJ/CALV. 99/10
ICP 363

MRW 100125

CEF 070027
AGE/CALV. 13/11
AVG. WJ/CALV. 97/10
ICP 386

CEF 080025

CEF 070151
AGE/CALV. 15/13
AVG. WJ/CALV. 101/12

CEF 010375

CEF 960097
AGE/CALV. 10/8
AVG. WJ/CALV. 103/8

WSS 070005 P

MRW 020190
AGE/CALV. 9/6
AVG. WJ/CALV. 101/6

CEF 040458

CEF 040157
AGE/CALV. 13/11
AVG. WJ/CALV. 105/9

Calving Ease Value	Weaner Calf Value	Fertility Value	Maintenance Value	Cow Value	Growth Value	Carcass Value
99	90	98	92	88	86	93

Calf and Mother			Fertility				Post-Wean Growth			Frame			Carcass		
Birth Dir.	Wean Dir.	Wean Mat.	Scr. Circ.	Heifer Fert.	Cow Fert.	Longev.	Post Wean	ADG	FCR	Mature Weight	Height	Length	EMA	Fat	Mar
95	102	82	73	94	99	107	92	89	101	108	72	84	96	82	55

Wean Index	365D Index	540D Index	ADG Index	FCR Index	Scrotum	LH
104	-	-	92	-	363	1.20

Myostatin	
Q204X	1
NT821	0
F94L	0

REMARKS:

LOGIX EBV Analysis: 2023-06-19

BULLE

LOT 52 P.F. SCHEEPERS

CEP 210380
2021-04-05 SP

Querskap Vaar Moer

DNS

Genomies

CEP 160657
OUD/KALW. 6/4
GEM. SI/KALW. 94/4
TKP 381

GJN 120203 HH(c)

GJN 160214 HH(c)

GJN 140028
OUD/KALW. 6/2
GEM. SI/KALW. 117/2
TKP 490

HDT 120043 Pp(c)

CEP 130042
OUD/KALW. 4/3
GEM. SI/KALW. 97/2
TKP 395

GJN 080021

GJN 100057
OUD/KALW. 12/11
GEM. SI/KALW. 98/10

AG 100384

GJN 090213
OUD/KALW. 8/5
GEM. SI/KALW. 106/5

HDT 080059 Pp(c)

HDT 090001 P
OUD/KALW. 11/7
GEM. SI/KALW. 98/6

AG 090762

CEP 030041
OUD/KALW. 11/8
GEM. SI/KALW. 95/8

Geboortegemak Waarde	Speenkalf Waarde	Vrugbaarheids-waarde	Onderhouds-waarde	Koeiwaarde	Groei-waarde	Karkas-waarde
105	104	98	118	103	98	102

Kalf en Moeder			Vrugbaarheid				Na-Speen Groei			Raam		Karkas			
Geb. Dir.	Spn. Dir.	Spn. Mat.	Skr. Omtr.	Vers Vrugb.	Koei Vrugb.	Lankl.	Na-Speen	GDT	VOV	Volw. Gewig	Hoogte	Lengte	OSO	Vet	Mar
102	102	87	93	109	79	109	104	97	99	86	71	90	120	93	147

Spn. Indeks	365D Indeks	540D Indeks	GDT Indeks	VOV Indeks	Skrotum	LH
90	-	-	106	-	353	1.20

Miostation	
Q204X	0
NT821	0
F94L	0

OPMERKINGS: Goed vir verse

LOGIX EBV Analise: 2023-06-19

LOT 53 P.F. SCHEEPERS

CEP 210398
2021-05-16 SP

Querskap Vaar Moer

DNS

Genomies

CEP 120252
OUD/KALW. 9/7
GEM. SI/KALW. 99/6
TKP 433

CEP 180465 HH(c)

CEP 110036
OUD/KALW. 12/9
GEM. SI/KALW. 100/8
TKP 368

ADV 090064

CEP 080200
OUD/KALW. 6/4
GEM. SI/KALW. 111/4
TKP 420

LAR 140064 HH(c)

LAR 110039 HH(c)
OUD/KALW. 11/8
GEM. SI/KALW. 107/8

CEP 080338

CEP 080176
OUD/KALW. 10/6
GEM. SI/KALW. 105/6

ADV 050053

ADV 050171
OUD/KALW. 17/14
GEM. SI/KALW. 101/13

CEP 060349

CEP 010137
OUD/KALW. 13/10
GEM. SI/KALW. 96/10

Geboortegemak Waarde	Speenkalf Waarde	Vrugbaarheids-waarde	Onderhouds-waarde	Koeiwaarde	Groei-waarde	Karkas-waarde
100	105	102	84	102	104	110

Kalf en Moeder			Vrugbaarheid				Na-Speen Groei			Raam		Karkas			
Geb. Dir.	Spn. Dir.	Spn. Mat.	Skr. Omtr.	Vers Vrugb.	Koei Vrugb.	Lankl.	Na-Speen	GDT	VOV	Volw. Gewig	Hoogte	Lengte	OSO	Vet	Mar
102	111	96	106	105	92	109	115	111	108	118	95	100	117	94	88

Spn. Indeks	365D Indeks	540D Indeks	GDT Indeks	VOV Indeks	Skrotum	LH
106	-	-	101	-	351	1.16

Miostation	
Q204X	0
NT821	0
F94L	0

OPMERKINGS: Goed vir verse

LOGIX EBV Analise: 2023-06-19

LOT 54 P.F. SCHEEPERS

CEP 200533
2020-09-24 SP

Querskap Vaar Moer

DNS

Genomies

CEP 160651
OUD/KALW. 6/4
GEM. SI/KALW. 114/3
TKP 377

GJN 120203 HH(c)

GJN 160214 HH(c)

GJN 140028
OUD/KALW. 6/2
GEM. SI/KALW. 117/2
TKP 490

CEP 140319

CEP 140026
OUD/KALW. 3/1
GEM. SI/KALW. 106/1
TKP -

GJN 080021

GJN 100057
OUD/KALW. 12/11
GEM. SI/KALW. 98/10

AG 100384

GJN 090213
OUD/KALW. 8/5
GEM. SI/KALW. 106/5

AG 100194

CEP 080218
OUD/KALW. 9/6
GEM. SI/KALW. 103/6

CEP 110301 HH(c)

CEP 110220
OUD/KALW. 11/9
GEM. SI/KALW. 98/9

Geboortegemak Waarde	Speenkalf Waarde	Vrugbaarheids-waarde	Onderhouds-waarde	Koeiwaarde	Groei-waarde	Karkas-waarde
105	122	91	90	112	113	110

Kalf en Moeder			Vrugbaarheid				Na-Speen Groei			Raam		Karkas			
Geb. Dir.	Spn. Dir.	Spn. Mat.	Skr. Omtr.	Vers Vrugb.	Koei Vrugb.	Lankl.	Na-Speen	GDT	VOV	Volw. Gewig	Hoogte	Lengte	OSO	Vet	Mar
103	116	111	108	94	84	110	112	107	108	109	108	113	136	71	147

Spn. Indeks	365D Indeks	540D Indeks	GDT Indeks	VOV Indeks	Skrotum	LH
113	-	-	95	-	327	1.16

Miostation	
Q204X	1
NT821	0
F94L	0

OPMERKINGS:

LOGIX EBV Analise: 2023-06-19

BULLS

LOT 55 P.F. SCHEEPERS

CEP 200441
2020-08-14 SP

Parentage Sire Dam

DNA

Genomic

VV 160038

AGE/CALV. 11/9
AVG. Wt/CALV. 100/14
ICP 375

AGE/CALV. 6/4
AVG. Wt/CALV. 112/4
ICP 383

AGE/CALV. 11/9
AVG. Wt/CALV. 98/8
ICP 360

AGE/CALV. 11/9
AVG. Wt/CALV. 101/9

AGE/CALV. 10/8
AVG. Wt/CALV. 103/8

AGE/CALV. 6/1
AVG. Wt/CALV. 110/1

AGE/CALV. 11/8
AVG. Wt/CALV. 113/8

AGE/CALV. 11/9
AVG. Wt/CALV. 107/9

AGE/CALV. 7/4
AVG. Wt/CALV. 102/4

AGE/CALV. 8/6
AVG. Wt/CALV. 90/5

AGE/CALV. 9/5
AVG. Wt/CALV. 101/5

Calving Ease Value	Weaner Calf Value	Fertility Value	Maintenance Value	Cow Value	Growth Value	Carcass Value
99	120	118	76	122	150	146

Calf and Mother			Fertility				Post-Wean Growth			Frame			Carcass		
Birth Dir.	Wean Dir.	Wean Mat.	Scr. Circ.	Heifer Fert.	Cow Fert.	Longev.	Post Wean	ADG	FCR	Mature Weight	Height	Length	EMA	Fat	Mar
100	122	106	133	111	112	112	131	139	115	129	126	129	133	151	100

Wean Index	365D Index	540D Index	ADG Index	FCR Index	Scrotum	LH
110	-	-	130	-	343	1.20

Myostatin	
Q204X	0
NT821	0
F94L	0

REMARKS: Goed vir verse

LOGIX EBV Analysis: 2023-06-19

LOT 56 P.F. SCHEEPERS

CEP 200515
2020-09-10 SP

Parentage Sire Dam

DNA

Genomic

CEF 170445

AGE/CALV. 12/9
AVG. Wt/CALV. 107/9

AGE/CALV. 6/3
AVG. Wt/CALV. 103/3
ICP 503

AGE/CALV. 8/6
AVG. Wt/CALV. 107/6
ICP 412

AGE/CALV. 12/9
AVG. Wt/CALV. 107/9

AGE/CALV. 7/4
AVG. Wt/CALV. 102/4

AGE/CALV. 8/6
AVG. Wt/CALV. 90/5

AGE/CALV. 9/5
AVG. Wt/CALV. 101/5

AGE/CALV. 12/9
AVG. Wt/CALV. 107/9

AGE/CALV. 7/4
AVG. Wt/CALV. 102/4

AGE/CALV. 8/6
AVG. Wt/CALV. 90/5

AGE/CALV. 9/5
AVG. Wt/CALV. 101/5

Calving Ease Value	Weaner Calf Value	Fertility Value	Maintenance Value	Cow Value	Growth Value	Carcass Value
111	117	115	100	124	104	113

Calf and Mother			Fertility				Post-Wean Growth			Frame			Carcass		
Birth Dir.	Wean Dir.	Wean Mat.	Scr. Circ.	Heifer Fert.	Cow Fert.	Longev.	Post Wean	ADG	FCR	Mature Weight	Height	Length	EMA	Fat	Mar
111	111	103	112	111	98	123	111	105	108	98	85	95	100	122	96

Wean Index	365D Index	540D Index	ADG Index	FCR Index	Scrotum	LH
110	-	-	102	-	364	1.14

Myostatin	
Q204X	0
NT821	0
F94L	0

REMARKS: Goed vir verse

LOGIX EBV Analysis: 2023-06-19

LOT 57 P.F. SCHEEPERS

CEP 200518
2020-09-13 SP

Parentage Sire Dam

DNA

Genomic

CEF 160450

AGE/CALV. 13/11
AVG. Wt/CALV. 106/10
ICP 367

AGE/CALV. 8/5
AVG. Wt/CALV. 102/5
ICP 463

AGE/CALV. 15/13
AVG. Wt/CALV. 101/12

AGE/CALV. 15/11
AVG. Wt/CALV. 103/11

AGE/CALV. 14/11
AVG. Wt/CALV. 93/9

AGE/CALV. 12/8
AVG. Wt/CALV. 95/7
ICP 498

AGE/CALV. 15/13
AVG. Wt/CALV. 101/12

AGE/CALV. 14/11
AVG. Wt/CALV. 103/11

AGE/CALV. 14/11
AVG. Wt/CALV. 93/9

AGE/CALV. 7/4
AVG. Wt/CALV. 96/4

Calving Ease Value	Weaner Calf Value	Fertility Value	Maintenance Value	Cow Value	Growth Value	Carcass Value
93	102	92	82	93	122	114

Calf and Mother			Fertility				Post-Wean Growth			Frame			Carcass		
Birth Dir.	Wean Dir.	Wean Mat.	Scr. Circ.	Heifer Fert.	Cow Fert.	Longev.	Post Wean	ADG	FCR	Mature Weight	Height	Length	EMA	Fat	Mar
94	113	93	103	91	90	108	120	112	98	121	94	107	112	90	82

Wean Index	365D Index	540D Index	ADG Index	FCR Index	Scrotum	LH
110	-	-	122	-	343	1.21

Myostatin	
Q204X	0
NT821	0
F94L	0

REMARKS:

LOGIX EBV Analysis: 2023-06-19

BULLE

LOT 58 P.F. SCHEEPERS

CEP 200445
2020-08-14 SP

Ouerskap Vaar Moer

DNS

Genomies

DAJ 150086 HH(c)

CEP 130139
OUD/KALW. 9/8
GEM. SI/KALW. 107/8
TKP 365

CEP 090196
OUD/KALW. 6/2
GEM. SI/KALW. 93/2
TKP 495

TOR 070049

DAJ 120094
OUD/KALW. 8/5
GEM. SI/KALW. 105/5
TKP 416

AG 090762

CEP 080025
OUD/KALW. 15/13
GEM. SI/KALW. 101/12

CEP 070151
OUD/KALW. 15/13
GEM. SI/KALW. 101/12

CEP 010375

CEP 970076
OUD/KALW. 11/9
GEM. SI/KALW. 100/9

CEP 080338

CEP 080218
OUD/KALW. 9/6
GEM. SI/KALW. 103/6

WAT 080168

CEP 070064
OUD/KALW. 11/8
GEM. SI/KALW. 101/8

FCT 000065

RAI 000032
OUD/KALW. 7/6
GEM. SI/KALW. 103/6

LAR 070038

DAJ 080010
OUD/KALW. 11/9
GEM. SI/KALW. 98/8

CEP 040431

AG 000415
OUD/KALW. 18/13
GEM. SI/KALW. 104/14

CEP 060455

CEP 040065
OUD/KALW. 12/9
GEM. SI/KALW. 99/9

Geboortegemak Waarde	Speenkalf Waarde	Vrugbaarheids-waarde	Onderhouds-waarde	Koeiwaarde	Groei-waarde	Karkas-waarde
101	111	101	109	112	106	105

Kalf en Moeder			Vrugbaarheid				Na-Speen Groei			Raam			Karkas		
Geb. Dir.	Spn. Dir.	Spn. Mat.	Skr. Omtr.	Vers Vrugb.	Koei Vrugb.	Lankl.	Na-Speen	GDT	VOV	Volw. Gewig	Hoogte	Lengte	OSO	Vet	Mar
100	100	118	102	104	91	109	102	104	108	91	87	94	91	117	104

Spn. Indeks	365D Indeks	540D Indeks	GDT Indeks	VOV Indeks	Skrotum	LH
103	-	-	114	-	339	1.19

Miostation	
Q204X	0
NT821	0
F94L	0

OPMERKINGS: Goed vir verse

LOGIX EBV Analise: 2023-06-19

LOT 59 P.F. SCHEEPERS

CEP 200498
2020-09-05 SP

Ouerskap Vaar Moer

DNS

Genomies

CEP 160490

CEP 060200
OUD/KALW. 12/8
GEM. SI/KALW. 110/8
TKP 408

CEP 110301 HH(c)

CEP 110181
OUD/KALW. 9/7
GEM. SI/KALW. 92/6
TKP 365

CEP 140057
OUD/KALW. 9/7
GEM. SI/KALW. 102/6
TKP 351

CEP 100304 HH(c)

CEP 080025
OUD/KALW. 15/13
GEM. SI/KALW. 101/12

CEP 070151
OUD/KALW. 15/13
GEM. SI/KALW. 101/12

CEP 010375

CEP 970076
OUD/KALW. 11/9
GEM. SI/KALW. 100/9

CEP 080338

CEP 080218
OUD/KALW. 9/6
GEM. SI/KALW. 103/6

WAT 080168

CEP 070064
OUD/KALW. 11/8
GEM. SI/KALW. 101/8

Geboortegemak Waarde	Speenkalf Waarde	Vrugbaarheids-waarde	Onderhouds-waarde	Koeiwaarde	Groei-waarde	Karkas-waarde
109	107	116	95	114	108	109

Kalf en Moeder			Vrugbaarheid				Na-Speen Groei			Raam			Karkas		
Geb. Dir.	Spn. Dir.	Spn. Mat.	Skr. Omtr.	Vers Vrugb.	Koei Vrugb.	Lankl.	Na-Speen	GDT	VOV	Volw. Gewig	Hoogte	Lengte	OSO	Vet	Mar
105	109	92	78	112	105	113	106	110	114	104	91	97	94	97	75

Spn. Indeks	365D Indeks	540D Indeks	GDT Indeks	VOV Indeks	Skrotum	LH
95	-	-	92	-	336	1.19

Miostation	
Q204X	0
NT821	0
F94L	0

OPMERKINGS: Goed vir verse

LOGIX EBV Analise: 2023-06-19

LOT 60 P.F. SCHEEPERS

CEP 200547
2020-10-01 SP

Ouerskap Vaar Moer

DNS ✓

Genomies

CEP 180311

CEP 180118
OUD/KALW. 5/3
GEM. SI/KALW. 116/2
TKP 350

CEP 160005
OUD/KALW. 4/2
GEM. SI/KALW. 105/2
TKP 468

CEP 140044

CEP 140095
OUD/KALW. 8/6
GEM. SI/KALW. 92/6
TKP 388

DAJ 150086 HH(c)

CEP 100304 HH(c)

CEP 050145
OUD/KALW. 15/13
GEM. SI/KALW. 97/12

CEP 120459 HH(c)

CEP 120053
OUD/KALW. 11/9
GEM. SI/KALW. 100/9

TOR 070049

DAJ 120094
OUD/KALW. 8/5
GEM. SI/KALW. 105/5

CEP 140334

CEP 130107
OUD/KALW. 7/5
GEM. SI/KALW. 110/3

Geboortegemak Waarde	Speenkalf Waarde	Vrugbaarheids-waarde	Onderhouds-waarde	Koeiwaarde	Groei-waarde	Karkas-waarde
107	109	112	94	116	110	108

Kalf en Moeder			Vrugbaarheid				Na-Speen Groei			Raam			Karkas		
Geb. Dir.	Spn. Dir.	Spn. Mat.	Skr. Omtr.	Vers Vrugb.	Koei Vrugb.	Lankl.	Na-Speen	GDT	VOV	Volw. Gewig	Hoogte	Lengte	OSO	Vet	Mar
106	104	108	94	108	108	107	97	103	106	103	76	86	84	131	79

Spn. Indeks	365D Indeks	540D Indeks	GDT Indeks	VOV Indeks	Skrotum	LH
126	-	-	105	-	326	1.17

Miostation	
Q204X	0
NT821	0
F94L	0

OPMERKINGS: Goed vir verse

LOGIX EBV Analise: 2023-06-19

BULLS

LOT 61 P.F. SCHEEPERS

CE 200424
2020-08-09
SP

Parentage Sire Dam

DNA

Genomic

CE 180338

CE 130147
AGE/CALV. 9/7
AVG. WJ/CALV. 102/7
ICP 369

CE 160326

CE 180057
AGE/CALV. 5/3
AVG. WJ/CALV. 96/3
ICP 397

CE 150269
AGE/CALV. 7/6
AVG. WJ/CALV. 107/4
ICP 363

CE 110301 HH(c)
CE 100161
AGE/CALV. 12/9
AVG. WJ/CALV. 103/7
GJN 100238
CE 110101
AGE/CALV. 5/1
AVG. WJ/CALV. 108/1
CE 130548 HH(c)
CE 130065
AGE/CALV. 4/1
AVG. WJ/CALV. 113/1
CE 120367
CE 100054
AGE/CALV. 13/10
AVG. WJ/CALV. 97/9

Calving Ease Value	Weaner Calf Value	Fertility Value	Maintenance Value	Cow Value	Growth Value	Carcass Value
100	105	113	94	109	111	117

Calf and Mother			Fertility				Post-Wean Growth			Frame			Carcass		
Birth Dir.	Wean Dir.	Wean Mat.	Scr. Circ.	Heifer Fert.	Cow Fert.	Longev.	Post Wean	ADG	FCR	Mature Weight	Height	Length	EMA	Fat	Mar
97	110	89	115	110	94	123	113	109	101	105	96	111	118	123	127

Wean Index	365D Index	540D Index	ADG Index	FCR Index	Scrotum	LH
97	-	-	103	-	351	1.19

Myostatin	
Q204X	0
NT821	0
F94L	0

REMARKS:

LOGIX EBV Analysis: 2023-06-19

LOT 62 P.F. SCHEEPERS

CE 210326
2021-03-12
SP

Parentage Sire Dam

DNA

Genomic

CE 150315

CE 050121
AGE/CALV. 12/10
AVG. WJ/CALV. 99/10
ICP 363

KHB 110046

CE 140089
AGE/CALV. 9/7
AVG. WJ/CALV. 105/6
ICP 369

CE 110111
AGE/CALV. 7/5
AVG. WJ/CALV. 109/5
ICP 383

CE 080025
CE 070151
AGE/CALV. 15/13
AVG. WJ/CALV. 101/12
CE 010375
CE 960097
AGE/CALV. 10/8
AVG. WJ/CALV. 103/8
ZAK 060046
KHB 030175
AGE/CALV. 11/8
AVG. WJ/CALV. 97/8
CE 080423
CE 080203
AGE/CALV. 6/4
AVG. WJ/CALV. 106/4

Calving Ease Value	Weaner Calf Value	Fertility Value	Maintenance Value	Cow Value	Growth Value	Carcass Value
95	113	107	84	108	107	112

Calf and Mother			Fertility				Post-Wean Growth			Frame			Carcass		
Birth Dir.	Wean Dir.	Wean Mat.	Scr. Circ.	Heifer Fert.	Cow Fert.	Longev.	Post Wean	ADG	FCR	Mature Weight	Height	Length	EMA	Fat	Mar
90	120	91	98	94	110	114	115	107	107	118	101	113	122	95	72

Wean Index	365D Index	540D Index	ADG Index	FCR Index	Scrotum	LH
97	-	-	97	-	371	1.23

Myostatin	
Q204X	0
NT821	0
F94L	0

REMARKS:

LOGIX EBV Analysis: 2023-06-19

LOT 63 P.F. SCHEEPERS

CE 210390
2021-04-25
SP

Parentage Sire Dam

DNA

Genomic

AG 170081

AG 090133
AGE/CALV. 13/12
AVG. WJ/CALV. 107/11
ICP 375

CE 130535

CE 180235
AGE/CALV. 4/2
AVG. WJ/CALV. 98/2
ICP 469

CE 090041 HH(c)
AGE/CALV. 14/11
AVG. WJ/CALV. 84/11
ICP 409

AG 090751
HJB 030230
AGE/CALV. 14/9
AVG. WJ/CALV. 99/8
FCT 060109
AG 070402
AGE/CALV. 14/10
AVG. WJ/CALV. 108/10
WAT 080080
CE 060026
AGE/CALV. 16/14
AVG. WJ/CALV. 109/14
CE 030447
CE 020049
AGE/CALV. 10/6
AVG. WJ/CALV. 89/6

Calving Ease Value	Weaner Calf Value	Fertility Value	Maintenance Value	Cow Value	Growth Value	Carcass Value
109	100	96	128	102	111	109

Calf and Mother			Fertility				Post-Wean Growth			Frame			Carcass		
Birth Dir.	Wean Dir.	Wean Mat.	Scr. Circ.	Heifer Fert.	Cow Fert.	Longev.	Post Wean	ADG	FCR	Mature Weight	Height	Length	EMA	Fat	Mar
114	98	81	108	92	97	109	100	109	105	74	93	94	101	151	103

Wean Index	365D Index	540D Index	ADG Index	FCR Index	Scrotum	LH
101	-	-	98	-	373	1.16

Myostatin	
Q204X	0
NT821	0
F94L	0

REMARKS: Goed vir verse

LOGIX EBV Analysis: 2023-06-19

BULLE

LOT 64 P.F. SCHEEPERS

CEF 210395
2021-05-07 SP

Ouerskap Vaar Moer

DNS

Genomies

CEF 180520

CEF 170118
OUD/KALW. 5/4
GEM. SI/KALW. 94/3
TKP 368

CEF 120128
OUD/KALW. 10/8
GEM. SI/KALW. 99/8
TKP 379

CEF 160490

VV 140512
OUD/KALW. 8/6
GEM. SI/KALW. 107/6
TKP 412

CEF 100304 HH(c)

CEF 120128
OUD/KALW. 10/8
GEM. SI/KALW. 99/8
TKP 379

CEF 100304 HH(c)

CEF 060200
OUD/KALW. 12/8
GEM. SI/KALW. 110/8

VV 110238

VV 080343
OUD/KALW. 9/5
GEM. SI/KALW. 101/5

CEF 080025

CEF 070151
OUD/KALW. 15/13
GEM. SI/KALW. 101/12

NPT 070170

CEF 050016
OUD/KALW. 15/13
GEM. SI/KALW. 97/13

Geboortegemak Waarde 92	Speenkalf Waarde 103	Vrugbaarheids-waarde 107	Onderhouds-waarde 105	Koeiwaarde 104	Groei-waarde 106	Karkas-waarde 108
--	---------------------------------------	---	--	---------------------------------	-----------------------------------	------------------------------------

Kalf en Moeder			Vrugbaarheid				Na-Speen Groei			Raam		Karkas			
Geb. Dir.	Spn. Dir.	Spn. Mat.	Skr. Omtr.	Vers Vrugb.	Koei Vrugb.	Lankl.	Na-Speen	GDT	VOV	Volw. Gewig	Hoogte	Lengte	OSO	Vet	Mar
90	106	95	81	95	103	121	103	102	103	94	69	89	104	146	95

Spn. Indeks	365D Indeks	540D Indeks	GDT Indeks	VOV Indeks	Skrotum	LH
101	-	-	103	-	354	1.25

Miostatien	
Q204X	0
NT821	0
F94L	0

OPMERKINGS: **LOGIX** EBV Analise: 2023-06-19

LOT 65 P.F. SCHEEPERS

CEF 210359
2021-03-23 SP

Ouerskap Vaar Moer

DNS

Genomies

CEF 160181
OUD/KALW. 6/5
GEM. SI/KALW. 110/4
TKP 366

CEF 100198
OUD/KALW. 7/5
GEM. SI/KALW. 100/4
TKP 405

GJN 120203 HH(c)

GJN 160214 HH(c)

GJN 140028
OUD/KALW. 6/2
GEM. SI/KALW. 117/2
TKP 490

ADV 100068

CEF 100198
OUD/KALW. 7/5
GEM. SI/KALW. 100/4
TKP 405

GJN 080021

GJN 100057
OUD/KALW. 12/11
GEM. SI/KALW. 98/10

AG 100384

GJN 090213
OUD/KALW. 8/5
GEM. SI/KALW. 106/5

SYF 070036

ADV 070142
OUD/KALW. 5/3
GEM. SI/KALW. 98/3

CEF 070473

CEF 030055
OUD/KALW. 12/8
GEM. SI/KALW. 107/7

Geboortegemak Waarde 106	Speenkalf Waarde 130	Vrugbaarheids-waarde 100	Onderhouds-waarde 99	Koeiwaarde 123	Groei-waarde 131	Karkas-waarde 135
---	---------------------------------------	---	---------------------------------------	---------------------------------	-----------------------------------	------------------------------------

Kalf en Moeder			Vrugbaarheid				Na-Speen Groei			Raam		Karkas			
Geb. Dir.	Spn. Dir.	Spn. Mat.	Skr. Omtr.	Vers Vrugb.	Koei Vrugb.	Lankl.	Na-Speen	GDT	VOV	Volw. Gewig	Hoogte	Lengte	OSO	Vet	Mar
102	122	106	117	105	89	109	130	131	116	99	125	138	127	106	147

Spn. Indeks	365D Indeks	540D Indeks	GDT Indeks	VOV Indeks	Skrotum	LH
113	-	-	118	-	356	1.26

Miostatien	
Q204X	0
NT821	0
F94L	0

OPMERKINGS: Goed vir verse **LOGIX** EBV Analise: 2023-06-19

LOT 66 P.F. SCHEEPERS

CEF 210397
2021-05-15 SP

Ouerskap Vaar Moer

DNS

Genomies

CEF 180480

CEF 170282
OUD/KALW. 5/3
GEM. SI/KALW. 105/3
TKP 436

VV 140040
OUD/KALW. 5/3
GEM. SI/KALW. 111/3
TKP 388

CEF 130317 HH(c)

CEF 130161
OUD/KALW. 6/4
GEM. SI/KALW. 128/2
TKP 412

MCU 130071 PP(c)

VV 140040
OUD/KALW. 5/3
GEM. SI/KALW. 111/3
TKP 388

CEF 110301 HH(c)

CEF 100161
OUD/KALW. 12/9
GEM. SI/KALW. 103/7

HWB 080171

CEF 100096
OUD/KALW. 4/2
GEM. SI/KALW. 107/2

MCU 100109 Pp(c)

MCU 110031 Pp(c)
OUD/KALW. 11/8
GEM. SI/KALW. 105/8

VV 110430
OUD/KALW. 10/6
GEM. SI/KALW. 96/6

Geboortegemak Waarde 89	Speenkalf Waarde 132	Vrugbaarheids-waarde 94	Onderhouds-waarde 99	Koeiwaarde 116	Groei-waarde 129	Karkas-waarde 134
--	---------------------------------------	--	---------------------------------------	---------------------------------	-----------------------------------	------------------------------------

Kalf en Moeder			Vrugbaarheid				Na-Speen Groei			Raam		Karkas			
Geb. Dir.	Spn. Dir.	Spn. Mat.	Skr. Omtr.	Vers Vrugb.	Koei Vrugb.	Lankl.	Na-Speen	GDT	VOV	Volw. Gewig	Hoogte	Lengte	OSO	Vet	Mar
87	132	98	107	88	95	112	134	120	101	99	107	125	125	99	129

Spn. Indeks	365D Indeks	540D Indeks	GDT Indeks	VOV Indeks	Skrotum	LH
115	-	-	116	-	321	1.21

Miostatien	
Q204X	0
NT821	0
F94L	0

OPMERKINGS: **LOGIX** EBV Analise: 2023-06-19

BULLS

LOT 67 P.F. SCHEEPERS

CEP 210325
2021-03-14
SP

Parentage Sire Dam

DNA

Genomic

CEP 150315

CEP 050121
AGE/CALV. 12/10
AVG. WJ/CALV. 99/10
ICP 363

CEP 140440

CEP 160229
AGE/CALV. 6/4
AVG. WJ/CALV. 107/3
ICP 376

CEP 140054
AGE/CALV. 4/3
AVG. WJ/CALV. 100/2
ICP 382

CEP 080025

CEP 070151
AGE/CALV. 15/13
AVG. WJ/CALV. 101/12

CEP 010375

CEP 960097
AGE/CALV. 10/8
AVG. WJ/CALV. 103/8

CEP 100304 HH(c)

CEP 050145
AGE/CALV. 15/13
AVG. WJ/CALV. 97/12

RCO 070009

CEP 100144
AGE/CALV. 12/9
AVG. WJ/CALV. 107/9

Calving Ease Value	Weaner Calf Value	Fertility Value	Maintenance Value	Cow Value	Growth Value	Carcass Value
77	113	99	87	101	101	108

Calf and Mother			Fertility				Post-Wean Growth			Frame			Carcass		
Birth Dir.	Wean Dir.	Wean Mat.	Scr. Circ.	Heifer Fert.	Cow Fert.	Longev.	Post Wean	ADG	FCR	Mature Weight	Height	Length	EMA	Fat	Mar
62	125	94	69	97	98	105	112	103	110	113	87	100	118	88	54

Wean Index	365D Index	540D Index	ADG Index	FCR Index	Scrotum	LH
103	-	-	90	-	324	1.19

Myostatin	
Q204X	1
NT821	0
F94L	0

REMARKS:

LOGIX EBV Analysis: 2023-06-19

LOT 68 P.F. SCHEEPERS

CEP 210362
2021-03-24
SP

Parentage Sire Dam

DNA

Genomic

CEP 180338

CEP 130317 HH(c)

CEP 130147
AGE/CALV. 9/7
AVG. WJ/CALV. 102/7
ICP 369

VV 110401

VV 140579
AGE/CALV. 8/7
AVG. WJ/CALV. 103/5
ICP 394

VV 110074
AGE/CALV. 5/4
AVG. WJ/CALV. 114/3
ICP 424

CEP 110301 HH(c)

CEP 100161
AGE/CALV. 12/9
AVG. WJ/CALV. 103/7

GJN 100238

CEP 110101
AGE/CALV. 5/1
AVG. WJ/CALV. 108/1

AG 080204

VV 040047
AGE/CALV. 13/11
AVG. WJ/CALV. 102/10

VV 060294

VV 040264
AGE/CALV. 11/9
AVG. WJ/CALV. 105/9

Calving Ease Value	Weaner Calf Value	Fertility Value	Maintenance Value	Cow Value	Growth Value	Carcass Value
107	111	109	92	112	105	111

Calf and Mother			Fertility				Post-Wean Growth			Frame			Carcass		
Birth Dir.	Wean Dir.	Wean Mat.	Scr. Circ.	Heifer Fert.	Cow Fert.	Longev.	Post Wean	ADG	FCR	Mature Weight	Height	Length	EMA	Fat	Mar
100	111	95	134	109	91	119	107	104	100	108	97	111	120	102	102

Wean Index	365D Index	540D Index	ADG Index	FCR Index	Scrotum	LH
104	-	-	99	-	401	1.20

Myostatin	
Q204X	0
NT821	0
F94L	0

REMARKS: Goed vir verse

LOGIX EBV Analysis: 2023-06-19

LOT 69 P.F. SCHEEPERS

CEP 200440
2020-08-14
SP

Parentage Sire Dam

DNA

Genomic

DAJ 150086 HH(c)

TOR 070049

DAJ 120094
AGE/CALV. 8/5
AVG. WJ/CALV. 105/5
ICP 416

VV 110238

VV 140375
AGE/CALV. 7/6
AVG. WJ/CALV. 93/5
ICP 359

VV 090544
AGE/CALV. 10/7
AVG. WJ/CALV. 99/7
ICP 385

FCT 000065

RAI 000032
AGE/CALV. 7/6
AVG. WJ/CALV. 103/6

LAR 070038

DAJ 080010
AGE/CALV. 11/9
AVG. WJ/CALV. 98/8

VV 080162

VV 030320
AGE/CALV. 13/12
AVG. WJ/CALV. 101/12

VV 060294

VV 050398
AGE/CALV. 16/11
AVG. WJ/CALV. 109/12

Calving Ease Value	Weaner Calf Value	Fertility Value	Maintenance Value	Cow Value	Growth Value	Carcass Value
97	110	107	94	111	117	115

Calf and Mother			Fertility				Post-Wean Growth			Frame			Carcass		
Birth Dir.	Wean Dir.	Wean Mat.	Scr. Circ.	Heifer Fert.	Cow Fert.	Longev.	Post Wean	ADG	FCR	Mature Weight	Height	Length	EMA	Fat	Mar
99	111	105	89	99	105	112	110	112	107	105	103	109	106	116	86

Wean Index	365D Index	540D Index	ADG Index	FCR Index	Scrotum	LH
101	-	-	112	-	311	1.20

Myostatin	
Q204X	0
NT821	0
F94L	0

REMARKS: Goed vir verse

LOGIX EBV Analysis: 2023-06-19

BULLE

LOT 70 P.F. SCHEEPERS

CEF 200501
2020-09-06
SP

Ouerskap Vaar Moer

DNS

Genomies

VV 160038

VV 130147

VV 070239
OUD/KALW. 15/14
GEM. SI/KALW. 100/14
TKP 375

ADV 090064

CEF 130007
OUD/KALW. 10/8
GEM. SI/KALW. 100/8
TKP 378

CEF 060167
OUD/KALW. 14/10
GEM. SI/KALW. 103/10
TKP 411

AG 090226

VV 050452
OUD/KALW. 11/9
GEM. SI/KALW. 101/9

VV 040322

VV 010386
OUD/KALW. 10/8
GEM. SI/KALW. 103/8

ADV 050053

ADV 050171
OUD/KALW. 17/14
GEM. SI/KALW. 101/13

CEF 030417

CEF 030183
OUD/KALW. 3/1
GEM. SI/KALW. 96/1

Geboortegemak Waarde	Speenkalf Waarde	Vrugbaarheids-waarde	Onderhouds-waarde	Koeiwaarde	Groei-waarde	Karkas-waarde
120	98	108	91	105	103	111

Kalf en Moeder			Vrugbaarheid				Na-Speen Groei			Raam		Karkas			
Geb. Dir.	Spn. Dir.	Spn. Mat.	Skr. Omtr.	Vers Vrugb.	Koei Vrugb.	Lankl.	Na-Speen	GDT	VOV	Volw. Gewig	Hoogte	Lengte	OSO	Vet	Mar
114	99	88	117	101	105	116	100	101	102	109	83	94	110	151	93

Spn. Indeks	365D Indeks	540D Indeks	GDT Indeks	VOV Indeks	Skrotum	LH
104	-	-	99	-	351	1.20

Miostatien	
Q204X	0
NT821	0
F94L	0

OPMERKINGS: Goed vir verse

LOGIX EBV Analise: 2023-06-19

LOT 71 P.F. SCHEEPERS

CEF 200493
2020-09-03
SP

Ouerskap Vaar Moer

DNS

Genomies

VV 160440

GJN 120203 HH(c)

GJN 140028
OUD/KALW. 6/2
GEM. SI/KALW. 117/2
TKP 490

VV 130248

VV 100006
OUD/KALW. 12/10
GEM. SI/KALW. 100/10
TKP 376

GJN 080021

GJN 100057
OUD/KALW. 12/11
GEM. SI/KALW. 98/10

AG 100384

GJN 090213
OUD/KALW. 8/5
GEM. SI/KALW. 106/5

AG 090226

VV 020323
OUD/KALW. 11/9
GEM. SI/KALW. 99/9

VV 070012

VV 990217
OUD/KALW. 13/10
GEM. SI/KALW. 102/10

Geboortegemak Waarde	Speenkalf Waarde	Vrugbaarheids-waarde	Onderhouds-waarde	Koeiwaarde	Groei-waarde	Karkas-waarde
115	97	98	106	100	100	102

Kalf en Moeder			Vrugbaarheid				Na-Speen Groei			Raam		Karkas			
Geb. Dir.	Spn. Dir.	Spn. Mat.	Skr. Omtr.	Vers Vrugb.	Koei Vrugb.	Lankl.	Na-Speen	GDT	VOV	Volw. Gewig	Hoogte	Lengte	OSO	Vet	Mar
114	95	91	93	104	82	113	100	103	109	93	86	100	110	87	147

Spn. Indeks	365D Indeks	540D Indeks	GDT Indeks	VOV Indeks	Skrotum	LH
90	-	-	95	-	343	1.22

Miostatien	
Q204X	1
NT821	0
F94L	0

OPMERKINGS:

LOGIX EBV Analise: 2023-06-19

LOT 72 P.F. SCHEEPERS

AG 190798
2019-10-27
SP

Ouerskap Vaar Moer

DNS ✓ ✓

Genomies

AG 150765

AG 110215

AG 020297
OUD/KALW. 15/9
GEM. SI/KALW. 108/9

JRB 000170

BBN 050035
OUD/KALW. 16/13
GEM. SI/KALW. 105/11
TKP 368

BBN 950153
OUD/KALW. 13/6
GEM. SI/KALW. 105/6

LAR 040233

AG 050239
OUD/KALW. 5/3
GEM. SI/KALW. 104/3

AG 060481

AG 000553
OUD/KALW. 14/6
GEM. SI/KALW. 104/6

Geboortegemak Waarde	Speenkalf Waarde	Vrugbaarheids-waarde	Onderhouds-waarde	Koeiwaarde	Groei-waarde	Karkas-waarde
91	118	114	85	117	119	124

Kalf en Moeder			Vrugbaarheid				Na-Speen Groei			Raam		Karkas			
Geb. Dir.	Spn. Dir.	Spn. Mat.	Skr. Omtr.	Vers Vrugb.	Koei Vrugb.	Lankl.	Na-Speen	GDT	VOV	Volw. Gewig	Hoogte	Lengte	OSO	Vet	Mar
86	122	101	107	105	113	111	120	114	106	116	111	119	114	105	97

Spn. Indeks	365D Indeks	540D Indeks	GDT Indeks	VOV Indeks	Skrotum	LH
93	99	96	-	-	-	-

Miostatien	
Q204X	0
NT821	Nie Getoets
F94L	Nie Getoets

OPMERKINGS: Gebruik in komm kudde

LOGIX EBV Analise: 2023-06-19

Dier Info				Actual Values						Expected Breeding Values										Indices			Dam					
LOT	Animal ID	Sex	SEC	Birth Wt (kg)	205d Wt (kg)	CCB Ratio	CCW Ratio	Length Height Ratio	Scr. Circ. (mm)	Birth Dir (kg)	Birth Mat (kg)	Wean Dir (kg)	Wean Mat (kg)	Post Wean (kg)	Mature Weight. (kg)	ADG (g/d)	FCR (kg:kg)	Scr. Circ. (mm)	Height. (mm)	Length (mm)	Wean	ADG	Scr. Circ.	Avg. Wean Index	Nr. Calves	Repr. Index		
Breed Average				33	241	6.26	45.5	1.20	353	1.08	-0.22	14.4	3.8	23	10	106	-49	11.6										
Auction Average				33	241	6.26	45.5	1.20	353	1.19	-0.53	19.9	2.9	37	18	166	-59	15.5										
1	CEF 200410	M	SP	32	254	7.32	71.6	1.23	369	0.50	-0.88	19.8	5.5	37.2	12.6	148	-52	28.7	1	41	104	90	126	109	3	114		
2	CEF 200554	M	SP	35	256	5.71	44.1	1.25	374	2.20	-0.35	19.2	1.0	27.6	11.3	147	-86	18.1	4	31	110	112	110	106	10	116		
3	CEF 200489	M	SP	35	265	6.12	50.8	1.21	341	1.72	-0.59	21.7	4.9	42.9	16.1	207	-67	16.1	-4	27	112	108	107	100	8	114		
4	CEF 190506	M	SP	34	269	6.18	54.4	1.20	384	0.54	-0.42	25.5	5.8	52.2	14.0	226	-80	24.1	8	37	106	120	119	101	8	116		
5	CEF 200503	M	SP	33	255	5.94	47.4	1.25	339	2.26	-1.26	20.6	1.8	31.5	26.9	104	-44	5.8	-0	32	108	105	91	105	7	115		
6	CEF 190308	M	SP	29	243	7.09	53.2	-	326	1.47	-1.18	6.5	9.7	12.0	-13.0	79	-56	10.4	-22	-11	102	95	98	99	4	104		
7	CEF 200457	M	SP	34	260	6.44	51.4	1.22	314	0.18	-0.86	21.2	-1.3	44.3	33.7	182	-52	16.7	2	32	110	116	108	104	5	114		
8	CEF 200531	M	SP	32	264	6.27	50	1.22	342	2.18	-0.97	22.4	6.0	45.1	24.3	183	-60	13.2	-8	26	114	116	102	107	6	115		
9	CEF 200433	M	SP	32	231	5.31	42.4	1.17	359	0.97	0.24	15.5	6.6	30.4	34.1	144	-36	18.1	5	22	93	123	110	103	6	108		
10	CEF 200437	M	SP	36	227	7.71	41.5	1.22	350	2.93	-0.59	23.5	1.0	32.9	41.2	82	-30	15.1	-10	16	98	92	105	97	3	116		
11	CEF 200529	M	SP	32	226	6.4	35.6	1.24	340	1.01	-0.89	17.9	0.6	29.8	26.4	117	-51	2.4	-4	25	95	96	86	101	5	106		
12	CEF 200327	M	SP	38	222	7.52	56.9	1.19	364	0.84	0.06	13.1	12.8	32.8	3.1	193	-64	3.7	-20	8	105	127	88	106	8	107		
13	CEF 200382	M	SP	30	211	6.25	42.7	1.22	346	-1.29	-1.23	12.0	-2.8	23.0	8.4	128	-45	6.9	-8	15	100	95	93	100	5	110		
14	CEF 200439	M	SP	30	261	5.19	52	1.15	356	0.71	-0.48	21.5	2.6	32.9	42.5	157	-68	24.5	7	17	108	92	120	103	4	106		
15	CEF 210336	M	SP	34	246	6.69	46.9	1.23	364	2.04	-0.28	30.5	2.2	56.6	38.6	222	-63	31.5	9	51	107	128	131	107	3	115		
16	CEF 210332	M	SP	35	246	6.58	48	1.21	383	2.34	-0.24	29.6	0.1	58.6	35.4	277	-62	30.3	22	64	107	134	129	103	3	112		
17	CEF 210304	M	SP	22	192	5.18	39	1.18	367	-1.39	-0.23	11.0	1.1	23.2	-12.8	103	-38	9.9	-9	4	90	107	97	94	3	102		
18	CEF 210342	M	SP	36	256	6.77	47	1.18	366	3.34	-0.87	25.5	4.6	40.9	22.6	189	-84	11.5	3	32	111	107	100	109	5	112		
19	CEF 210367	M	SP	47	261	8.05	43.8	1.20	335	4.99	-0.68	37.8	6.6	67.8	53.5	275	-87	22	13	59	108	90	116	109	4	113		
20	CEF 210339	M	SP	34	217	6.49	40.9	1.22	355	1.21	-0.43	14.6	5.4	29.9	19.2	124	-37	22.3	-7	25	93	104	116	102	5	114		
21	CEF 210346	M	SP	30	227	5.3	36.9	1.23	328	0.96	-1.19	19.1	-1.3	33.8	30.6	150	-58	.6	-4	30	100	98	83	104	5	114		
22	CEF 210361	M	SP	32	250	6.45	48.7	1.19	360	1.11	-0.40	26.5	1.6	47.4	21.6	202	-66	16.5	5	34	110	108	107	102	3	104		
23	AG 170081	M	SP	36	247	7.2	54.2	-	-	0.35	0.41	22.6	1.5	41.3	-23.3	263	-79	26.8	15	35	115	-	123	107	12	116		
24	LFR 180022	M	SP	33	245	-	48.7	1.22	372	0.24	-0.91	11.2	-1.9	18.9	-9.0	83	-46	8.1	-5	12	100	108	95	99	4	116		
25	LAR 170271	M	SP	38	258	-	45.6	1.20	372	3.55	-1.19	21.2	-2.5	37.0	27.0	169	-68	23.2	25	37	105	102	118	98	7	107		

Dier Info				Werklike Syfers						Verwagte Teelwaardes										Indekse			Moeder			
LOT	Dier ID	Geslag	AFD	Geb. Gewig (kg)	205d Gewig (kg)	KKG Verh.	KKS Verh.	Lengte Hoogte Verh.	Skr. Omtr. (mm)	Geb Dir (kg)	Geb Mat (kg)	Spn Dir (kg)	Spn Mat (kg)	Na-Spn (kg)	Volw. Gewig (kg)	GDT (g/d)	VOV (kg:kg)	Skr. Omtr. (mm)	Hoogte (mm)	Lengte (mm)	Spn.	GDT	Skr. Omtr.	Gem. Spn. Indeks	Aant. Kalw.	Repr. Indeks
Ras Gemiddeld Aanbod Gemiddeld				33	241	6.26	45.5	1.20	353	1.08	-0.22	14.4	3.8	23	10	106	-49	11.6	-	27	104	107	106	103	5.0	111
26	CEF 200514	M	SP	30	238	5.2	43.1	1.21	386	-0.31	-0.62	14.0	3.4	31.2	19.8	183	-55	26.3	-1	20	102	122	123	111	5	115
27	CEF 200414	M	SP	27	219	6.38	49.9	1.19	336	-0.52	-0.08	10.2	4.0	27.1	-0.1	87	-47	1.1	-18	-1	90	115	84	96	3	115
28	CEF 200468	M	SP	35	244	5.62	44.3	1.23	370	2.25	-0.63	20.4	-1.3	32.1	20.9	118	-48	13.5	2	28	103	99	103	103	9	110
29	CEF 200473	M	SP	32	249	7.03	46.8	1.21	344	0.90	-0.33	18.0	5.0	32.7	36.5	130	-57	6.7	-17	10	111	100	92	107	2	119
30	CEF 200438	M	SP	30	217	4.93	39.1	1.21	354	-0.15	-0.60	13.6	-0.8	29.9	30.7	138	-41	19.1	-6	16	92	112	112	97	5	115
31	CEF 190424	M	SP	35	281	5.31	43.6	-	325	1.74	-0.88	34.2	8.5	67.0	61.6	301	-74	18.4	20	68	123	140	110	111	6	113
32	CEF 210355	M	SP	27	233	6.28	45.1	1.22	383	-0.18	0.53	19.4	3.7	43.5	-6.4	263	-71	30.6	15	45	109	127	129	112	3	114
33	CEF 210306	M	SP	30	254	6.88	51.2	1.19	344	1.19	0.17	25.2	2.6	47.1	5.7	270	-86	15.1	27	52	119	115	105	105	2	115
34	CEF 210301	M	SP	29	222	5.98	41.8	1.23	343	0.72	0.47	22.1	3.6	49.6	8.8	256	-76	15.7	12	43	102	133	106	106	2	93
35	CEF 210364	M	SP	36	217	7.29	40.4	1.22	368	0.77	-0.74	17.1	0.8	34.2	4.9	117	-48	11.4	-1	28	92	99	100	96	4	112
36	CEF 210347	M	SP	30	208	5.77	38.7	1.18	356	0.95	-1.71	15.0	-4.5	24.6	15.6	82	-42	3.5	-13	9	90	91	87	90	5	115
37	CEF 210373	M	SP	36	240	6.41	42.1	1.20	354	1.06	-0.24	18.7	5.8	34.6	15.6	169	-69	14.8	-1	23	103	92	105	102	6	102
38	CEF 210308	M	SP	30	260	7.23	56.2	1.18	363	1.18	-0.21	23.7	2.7	37.1	-12.4	224	-76	27.2	12	36	122	106	124	109	2	105
39	CEF 210321	M	SP	38	242	6.65	51.2	1.21	331	2.82	-0.97	21.4	1.5	31.4	15.6	109	-57	1.3	6	34	103	90	84	104	7	110
40	CEF 210369	M	SP	34	249	5.41	40.6	1.21	360	1.96	-0.22	24.0	6.7	47.7	33.6	225	-66	22.6	19	48	109	124	117	107	6	114
41	CEF 210350	M	SP	37	244	6.7	41.8	1.18	368	1.39	-0.35	23.0	5.6	45.1	11.6	221	-73	19.8	21	49	105	107	113	103	5	114
42	CEF 210310	M	SP	27	232	5.6	42.3	1.23	344	-0.26	0.00	21.6	-2.4	46.1	9.2	247	-65	18.7	5	36	109	130	111	101	3	113
43	CEF 200446	M	SP	33	265	5.56	53.5	1.22	358	2.26	-0.15	24.3	6.0	44.7	50.9	236	-56	20.7	7	33	109	126	114	107	6	113
44	CEF 200415	M	SP	29	246	6.32	51.7	1.25	396	0.89	-0.64	20.0	5.2	39.8	25.6	150	-42	34.9	-9	35	102	109	136	116	3	114
45	CEF 200513	M	SP	37	257	6.34	45.3	1.22	324	2.10	-0.43	21.2	6.4	44.8	35.3	224	-65	7.1	-8	28	108	112	93	105	7	113
46	CEF 200423	M	SP	29	220	6.5	45.3	1.23	327	0.53	-0.87	12.3	-0.4	26.0	18.9	93	-32	8.5	-11	22	90	94	95	94	3	108
47	CEF 200431	M	SP	32	237	4.77	45.2	1.13	382	0.36	-0.40	14.5	9.2	23.2	-2.3	116	-75	18.5	4	8	96	91	111	110	8	109
48	CEF 200516	M	SP	32	249	6.61	50.1	1.17	340	0.06	-0.99	17.3	0.6	29.0	18.8	156	-48	15.5	0	25	106	103	106	106	4	118
49	CEF 210338	M	SP	34	274	6.71	54.4	1.19	381	2.09	-0.41	34.4	3.0	61.1	41.5	286	-68	40.9	24	66	121	114	145	114	4	113
50	CEF 210331	M	SP	35	227	6.64	44.1	1.23	360	0.32	-0.65	14.5	-0.7	24.1	14.8	111	-37	17	-5	26	97	90	108	97	5	113

Dier Info				Actual Values						Expected Breeding Values										Indices			Dam				
LOT	Animal ID	Sex	SEC	Birth Wt (kg)	205d Wt (kg)	CCB Ratio	CCW Ratio	Length Height Ratio	Scr. Circ. (mm)	Birth Dir (kg)	Birth Mat (kg)	Wean Dir (kg)	Wean Mat (kg)	Post Wean (kg)	Mature Weight. (kg)	ADG (g/d)	FCR (kg:kg)	Scr. Circ. (mm)	Height. (mm)	Length (mm)	Wean	ADG	Scr. Circ.	Avg. Wean Index	Nr. Calves	Repr. Index	
Breed Average				33	241	6.26	45.5	1.20	353	1.08	-0.22	14.4	3.8	23	10	106	-49	11.6									
Auction Average				33	241	6.26	45.5	1.20	353	1.19	-0.53	19.9	2.9	37	18	166	-59	15.5	-	27	104	107	106	103	5.0	111	
51	CEF 210388	M	SP	32	222	6	37.1	1.20	363	1.57	-0.73	15.2	-1.4	19.7	19.0	50	-50	-5.8	-22	-5	104	92	73	100	5	111	
52	CEF 210380	M	SP	36	215	6.52	36.4	1.20	353	0.90	-0.78	15.1	0.1	30.2	-6.0	90	-47	7.2	-22	2	90	106	93	94	4	115	
53	CEF 210398	M	SP	34	226	5	30.9	1.16	351	0.87	0.08	19.6	2.8	38.3	30.2	162	-65	15.6	-3	16	106	101	106	99	7	104	
54	CEF 200533	M	SP	32	273	5.23	43.6	1.16	327	0.71	-0.56	21.4	7.0	36.3	19.6	142	-64	16.6	8	33	113	95	108	114	4	108	
55	CEF 200441	M	SP	31	265	5.03	47.1	1.20	343	1.11	-0.09	24.3	5.7	50.7	41.9	297	-78	33.1	23	54	110	130	133	112	4	113	
56	CEF 200515	M	SP	31	258	5.86	48.8	1.14	364	-0.07	-0.34	19.3	4.6	36.1	7.4	130	-64	19.3	-11	9	110	102	112	103	3	92	
57	CEF 200518	M	SP	31	255	4.62	38.2	1.21	343	1.70	0.07	20.5	1.9	41.2	33.3	166	-45	13.5	-4	25	110	122	103	102	5	100	
58	CEF 200445	M	SP	33	242	6.24	55.1	1.19	339	1.10	-0.35	14.3	9.0	28.4	-0.2	126	-64	13.2	-9	7	103	114	102	107	8	117	
59	CEF 200498	M	SP	30	224	5.4	42.4	1.19	336	0.50	-0.79	18.3	1.4	31.3	14.5	154	-77	-2.4	-6	12	95	92	78	102	7	115	
60	CEF 200547	M	SP	29	275	6.26	51.3	1.17	326	0.49	-0.47	16.4	6.1	24.9	13.7	122	-61	7.9	-19	-3	126	105	94	116	3	120	
61	CEF 200424	M	SP	34	241	7.89	58.4	1.19	351	1.38	-0.76	19.1	0.6	37.1	15.8	148	-51	21.5	-2	30	97	103	115	96	3	111	
62	CEF 210326	M	SP	35	227	5.6	39.4	1.23	371	2.13	-1.07	23.7	1.1	38.3	30.1	142	-63	10.3	2	32	97	97	98	105	7	113	
63	CEF 210390	M	SP	29	220	7.44	39.5	1.16	373	-0.43	0.55	13.8	-1.7	25.6	-18.7	149	-58	16.9	-4	7	101	98	108	98	2	103	
64	CEF 210395	M	SP	38	221	8.41	36.9	1.25	354	2.10	-0.39	17.2	2.5	28.6	3.3	118	-54	-1	-25	1	101	103	81	94	4	112	
65	CEF 210359	M	SP	32	256	5.93	47.9	1.26	356	0.86	-0.84	24.2	5.7	51.1	8.7	258	-80	22.4	22	66	113	118	117	110	5	112	
66	CEF 210397	M	SP	38	248	6.93	42.6	1.21	321	2.42	-0.46	28.8	3.2	53.2	8.4	206	-51	16	7	48	115	116	107	105	3	108	
67	CEF 210325	M	SP	45	249	7.48	43.2	1.19	324	5.10	-0.32	25.6	2.1	34.3	24.6	121	-68	-8.3	-10	16	103	90	69	107	4	112	
68	CEF 210362	M	SP	34	223	5.94	41.5	1.20	401	1.07	-1.33	19.3	2.3	33.3	18.6	124	-49	33.9	-2	30	104	99	134	103	7	116	
69	CEF 200440	M	SP	33	240	5.04	40.9	1.20	311	1.21	0.06	19.2	5.2	34.5	15.0	165	-62	4.7	4	27	101	112	89	93	6	122	
70	CEF 200501	M	SP	32	243	5.58	44.6	1.20	351	-0.44	-1.40	14.0	0.5	28.2	19.6	111	-53	22.7	-12	8	104	99	117	100	8	112	
71	CEF 200493	M	SP	28	213	4.96	37.3	1.22	343	-0.38	-0.56	12.1	1.3	26.6	2.3	119	-66	7.1	-10	16	90	95	93	92	4	109	
72	AG 190798	M	SP	36	229	8.67	32.9	-	-	2.57	-1.03	24.3	4.1	43.7	27.7	176	-60	16.1	11	40	93	-	107	97	6	119	

EXPLANATION OF CATALOGUE ABBREVIATIONS

VERDUIDELIKING VAN KATALOGUS AFKORTINGS

Lot Number	LOT	LOT	Lot Nommer
Estimated breeding value	EBV	EBV	Beraamde teelwaarde
Parentage verification	Parentage	Ouerskap	Ouerskap verifikasie
Age in years / Number of calvings	AGE. / CALV.	OOD. / KALF.	Ouderdom in jaar / Aantal kalwings
Average Wean index / Number of calves weaned	Ave WI / CALV.	GEM SI / KALF.	Gemiddelde speen indeks / Aantal kalwers gespeen
Animal identification number	ID	ID	Dier se identifikasie nommer
Herd Book Section	SEC	AFD	Kuddeboek Afdeling
Herd Book Section: Pending Registration	PEN	PEN	Kuddeboek Afdeling: Wag vir Registrasie
Herd Book Section: Not for Registration	NFR	NFR	Kuddeboek Afdeling: Nie vir Registrasie
Herd Book Section: Foundation Generation	FO	FO	Kuddeboek Afdeling: Fondasie Generasie
Herd Book Section: Appendix A	A	A	Kuddeboek Afdeling: Aanhangsel A
Herd Book Section: Appendix B	B	B	Kuddeboek Afdeling: Aanhangsel B
Herd Book Section: Studbook Proper, a registered animal	SP	SP	Kuddeboek Afdeling: Studbook Proper, 'n geregistreerde dier
Genomically Tested	GT	GT	Genomies Getoets
Homozygous Horned (Celtic test)	HH(c)	HH(c)	Homosigoties horings (Celtic toets)
Homozygous Polled (Celtic test)	PP(c)	PP(c)	Homosigoties Poena (Celtic toets)
Heterozygous Polled (Celtic test)	Pp(c)	Pp(c)	Heterosigoties Poena (Celtic toets)
Phenotypically Polled	P	P	Fenotopies Poena
Intercalving Period	ICP	TKP	Tussen-Kalf Periode
Birth Direct breeding value	Birth Dir.	Geb. Dir	Geboorte Direk teelwaarde
Wean Direct breeding value	Wean Dir.	Spn. Dir.	Speen Direk teelwaarde
Wean Maternal breeding value	Wean Mat.	SPn. Mat.	Speen Maternaal teelwaarde
Scrotal Circumference	Scr. Circ.	Skr. Omt.	Skrotum omtrek
Heifer Fertility	Heifer Fert.	Vers Vrugb.	Vers Vrugbaarheid
Cow Fertility	Cow Fert.	Koei Vrugb.	Koei Vrugbaarheid
Longevity	Longev.	Lankl.	Lanklewendheid
Mature Weight	Mat. Wt.	Volw. Gewig	Volwasse gewig
Average Daily Gain (g/day)	ADG	GDT	Gemiddelde Daaglikse Toename
Feed Conversion Ratio (kg:kg)	FCR	VOV	Voeromset Verhouding
Eye Muscle Area	EMA	OSO	Oogspier grootte
Backfat Thickness	Fat	Vet	Rugvet Diepte
Marbeling (intra-muscular fat)	Mar	Mar	Marmering (binne-spierse vet)
365-day weight index	365D Index	365D Indeks	365-dae gewig indeks
540-day weight index	540D Index	540D Indeks	540-dae gewig indeks
Length-Height ratio	LH	LH	Lengte-Hoogte Verhouding
Actual Birth weight	Birth Wt.	Geb. gewig	Werklike Geboorte gewig
205-day Dam-age corrected weight	205d Wt.	205d gewig	205-dag Moeder-ouderdom gekorrigeerde gewig
Cow-Calf Birth Ratio	CCG	KKG	Koei-Kalf Geboorte Verhouding
Cow-Calf Wean Ratio	CCW	KKS	Koei-Kalf Speen Verhouding
Average Weaning Index	Avg. Wean Index	Gem. Spn. Indeks	Gemiddelde speen indeks
Number of Calves	Nr. Calves	Aant. Kalw.	Aantal kalwers
Reproduction Index	Repr. Index	Repr. Indeks	Reproduksie indeks
Animal sex: M - Male, F - Female	M / F	M / V	Dier geslag: M - Manlik, V - Vroulik