

# FARM IMPLEMENT DIGITAL AUCTION

**BKB**

The Trusted Home of Agriculture  
Die Betroubare Tuiste van Landbou

*Digital Auction Catalogue*

**Date: Wednesday, 16 November 2021**

Platform Opens at **10:00** for log in

Auction starts at **11:00**

Auctioneer: Appie Maritz

BKB Western Region: Dieter Schutte

BKB Central Region: Danie Strauss

Contact: (082) 825 3895

Contact: (079) 500 7525

Contact: (072) 585 4028



[REGISTER TO BID](#)

[VIEW AUCTION  
AS GUEST](#)

Please call or WhatsApp the following number if you require technical support on the Digital Auction Platform:

**+27 (0)82 957 8827**

Lot Nr.

1

Date

16 November 2021

**Detail Information**

Location	Porterville
Year	
Manufacturer	John Deere
Model	
Asset Type	Hay & Forage Equipment
Serial Number or VIN	
Condition	3 - Fair
Hours	
Km's	
Comes with	
Notes	Kuilvoer Kerwer (1.5m; dubbel kap)



**Operator Station**

Cab Type	
Transmission Detail: Speed	
Transmission Detail: Shift Type	
Differential Lock	
Notes	



**Engine**

Fuel Type	
Manufacturer	
Model	
Notes	

**Rear Options**

Hitch Type	
PTO	
Hydraulic Outlets	
Notes	

**Body Details**

Size	1.5m cutting width
Type	
Notes	

**Drive Train**

Notes	
-------	--

**Weights**

Front Wheel Weights	
Back Wheel Weights	
Front Nose Weights	
Notes	

**Undercarriage/Suspension**

Tyre Manufacturer	
Front Tyre Size	
Rear Tyre Size	
Notes	

**Accessories**

Other	
Extensions	

**Functionality Tests**

Start	
Drives Forward	
Drives Backwards	
Brake Pedal Functions	

Functional Test Notes	
-----------------------	--

**Supporting Documents**

Certificate of Registration	
Vehicle Licence Certificate	
Service Record	
Other	



**General**

The Detailed Equipment Information is limited in scope, and BKB Auctioneers has not inspected any aspects or components of the equipment other than those expressly set forth herein. Unless expressly stated, we make no representations or warranties, express or implied, concerning the equipment or its components, including without limitation any representations or warranties concerning functionality, conformity or compliance with any safety standard or requirement of any applicable authority or regulatory body, fitness for any particular purpose, or merchantability. You are strongly advised to perform your own detailed inspection of the

**Functions**

The Equipment is not tested under load or operated in all available gears. We make no representation or warranty that equipment is operating in accordance with manufacturers' specifications. No inspection has been performed with respect to any functionality aspect other than those expressly included herein. Only select photos have been provided for individual undercarriage components, and may not be indicative of the condition of the entire undercarriage as a whole.

**Dimensions**

Measurements are given as an estimate only. Actual loaded dimensions may vary based on truck/trailer height and the loaded machine configuration/position. It is the buyer's responsibility to measure all loads before leaving our auction site to ensure the load is safe for transport. All measurements should be verified by the buyer. DO NOT rely on these measurements for transportation purposes.





Lot Nr.

2

Date

16 November 2021

**Detail Information**

Location	Dewetsdorp
Year	
Manufacturer	Clayson
Model	8040
Asset Type	Harvester
Serial Number or VIN	4519044
Condition	2 - Poor
Hours	
Km's	
Comes with Notes	Mielie tafel (4 ry, drie voet); Koring tafel (17 Stroper; Geen papiere (Voetstoot)



**Operator Station**

Cab Type	Closed cab
Transmission Detail: Speed	
Transmission Detail: Shift Type	Manual
Differential Lock	No
Notes	



**Engine**

Fuel Type	Diesel
Manufacturer	Mercedes
Model	80's
Notes	

**Rear Options**

Hitch Type	
PTO	
Hydraulic Outlets	
Notes	



**Body Details**

Size	
Type	
Notes	

**Drive Train**

Notes	5.9 ton
-------	---------

**Weights**

Front Wheel Weights	
Back Wheel Weights	
Front Nose Weights	
Notes	

**Undercarriage/Suspension**

Tyre Manufacturer	Pirelli & Firestone
Front Tyre Size	18.4-30
Rear Tyre Size	12.0-18
Notes	10% Tread



**Accessories**

Other Extensions	
------------------	--

**Functionality Tests**

Start	YES
Drives Forward	YES
Drives Backwards	YES
Brake Pedal Functions	YES

**Supporting Documents**

Certificate of Registration	NO
Vehicle Licence Certificate	NO
Service Record	NO
Other	NO

Functional Test Notes

**General**

The Detailed Equipment Information is limited in scope, and BKB Auctioneers has not inspected any aspects or components of the equipment other than those expressly set forth herein. Unless expressly stated, we make no representations or warranties, express or implied, concerning the equipment or its components, including without limitation any representations or warranties concerning functionality, conformity or compliance with any safety standard or requirement of any applicable authority or regulatory body, fitness for any particular purpose, or merchantability. You are strongly advised to perform your own detailed inspection of the equipment prior to bidding.

**Functions**

The Equipment is not tested under load or operated in all available gears. We make no representation or warranty that equipment is operating in accordance with manufacturers' specifications. No inspection has been performed with respect to any functionality aspect other than those expressly included herein. Only select photos have been provided for individual undercarriage components, and may not be indicative of the condition of the entire undercarriage as a whole.

**Dimensions**

Measurements are given as an estimate only. Actual loaded dimensions may vary based on truck/trailer height and the loaded machine configuration/position. It is the buyer's responsibility to measure all loads before leaving our auction site to ensure the load is safe for transport. All measurements should be verified by the buyer. DO NOT rely on these measurements for transportation purposes.



Lot Nr.

3

Date

16 November 2021

**Detail Information**

Location	Koringberg
Year	
Manufacturer	
Model	
Asset Type	Other Agri Equipment
Serial Number or VIN	
Condition	2 - Poor
Hours	
Km's	
Comes with Notes	Short turn function for vineyard Misstrooier. 3 ton kapasiteit



**Operator Station**

Cab Type	
Transmission Detail: Speed	
Transmission Detail: Shift Type	
Differential Lock	
Notes	

**Engine**

Fuel Type	
Manufacturer	
Model	
Notes	

**Rear Options**

Hitch Type	
PTO	
Hydraulic Outlets	
Notes	

**Body Details**

Size	
Type	
Notes	

**Drive Train**

Notes	
-------	--

**Weights**

Front Wheel Weights	
Back Wheel Weights	
Front Nose Weights	
Notes	

**Undercarriage/Suspension**

Tyre Manufacturer	
Front Tyre Size	
Rear Tyre Size	
Notes	

**Accessories**

Other Extensions	
------------------	--

**Functionality Tests**

Start	
Drives Forward	
Drives Backwards	
Brake Pedal Functions	

**Supporting Documents**

Certificate of Registration	
Vehicle Licence Certificate	
Service Record	
Other	

Functional Test Notes	
-----------------------	--

**General**

The Detailed Equipment Information is limited in scope, and BKB Auctioneers has not inspected any aspects or components of the equipment other than those expressly set forth herein. Unless expressly stated, we make no representations or warranties, express or implied, concerning the equipment or its components, including without limitation any representations or warranties concerning functionality, conformity or compliance with any safety standard or requirement of any applicable authority or regulatory body, fitness for any particular purpose, or merchantability. You are strongly advised to perform your own detailed inspection of the equipment prior to bidding.

**Functions**

The Equipment is not tested under load or operated in all available gears. We make no representation or warranty that equipment is operating in accordance with manufacturers' specifications. No inspection has been performed with respect to any functionality aspect other than those expressly included herein. Only select photos have been provided for individual undercarriage components, and may not be indicative of the condition of the entire undercarriage as a whole.

**Dimensions**

Measurements are given as an estimate only. Actual loaded dimensions may vary based on truck/trailer height and the loaded machine configuration/position. It is the buyer's responsibility to measure all loads before leaving our auction site to ensure the load is safe for transport. All measurements should be verified by the buyer. DO NOT rely on these measurements for transportation purposes.





Lot Nr.

4

Date

16 November 2021

**Detail Information**

Location	Koringberg
Year	
Manufacturer	John Shearer
Model	
Asset Type	Seeding and Tillage Equipment
Serial Number or VIN	
Condition	3 - Fair
Hours	
Km's	
Comes with	10 Beitepunt skare; Tungstan skare
Notes	21 Tand - Nuwe silinder - Bande 80%



**Operator Station**

Cab Type	
Transmission Detail: Speed	
Transmission Detail: Shift Type	
Differential Lock	
Notes	

**Engine**

Fuel Type	
Manufacturer	
Model	
Notes	

**Rear Options**

Hitch Type	
PTO	
Hydraulic Outlets	
Notes	

**Body Details**

Size	
Type	
Notes	

**Drive Train**

Notes	
-------	--

**Weights**

Front Wheel Weights	
Back Wheel Weights	
Front Nose Weights	
Notes	

**Undercarriage/Suspension**

Tyre Manufacturer	
Front Tyre Size	
Rear Tyre Size	
Notes	

**Accessories**

Other Extensions	
------------------	--

**Functionality Tests**

Start	
Drives Forward	
Drives Backwards	
Brake Pedal Functions	

**Supporting Documents**

Certificate of Registration	
Vehicle Licence Certificate	
Service Record	
Other	

Functional Test Notes

--

**General**

The Detailed Equipment Information is limited in scope, and BKB Auctioneers has not inspected any aspects or components of the equipment other than those expressly set forth herein. Unless expressly stated, we make no representations or warranties, express or implied, concerning the equipment or its components, including without limitation any representations or warranties concerning functionality, conformity or compliance with any safety standard or requirement of any applicable authority or regulatory body, fitness for any particular purpose, or merchantability. You are strongly advised to perform your own detailed inspection of the equipment prior to bidding.

**Functions**

The Equipment is not tested under load or operated in all available gears. We make no representation or warranty that equipment is operating in accordance with manufacturers' specifications. No inspection has been performed with respect to any functionality aspect other than those expressly included herein. Only select photos have been provided for individual undercarriage components, and may not be indicative of the condition of the entire undercarriage as a whole.

**Dimensions**

Measurements are given as an estimate only. Actual loaded dimensions may vary based on truck/trailer height and the loaded machine configuration/position. It is the buyer's responsibility to measure all loads before leaving our auction site to ensure the load is safe for transport. All measurements should be verified by the buyer. DO NOT rely on these measurements for transportation purposes.



**Detail Information**

Location	Port Alfred
Year	2020
Manufacturer	Self
Model	
Asset Type	
Serial Number or VIN	
Condition	5 - Very Good
Hours	
Km's	

Comes with Notes	5 x Wool sorting tables and 10 x Wool bag holders; Very neat and brand new (only 10 Bales of wool done); 3 x Sorting tables (1.5 x 2.750); 2 x Sorting tables (1.5 x 2m)
------------------	--



**Operator Station**

Cab Type	
Transmission Detail: Speed	
Transmission Detail: Shift Type	
Differential Lock	
Notes	

**Engine**

Fuel Type	
Manufacturer	
Model	
Notes	

**Rear Options**

Hitch Type	
PTO	
Hydraulic Outlets	
Notes	

**Body Details**

Size	
Type	
Notes	

**Drive Train**

Notes	
-------	--

**Weights**

Front Wheel Weights	
Back Wheel Weights	
Front Nose Weights	
Notes	

**Undercarriage/Suspension**

Tyre Manufacturer	
Front Tyre Size	
Rear Tyre Size	
Notes	

**Accessories**

Other	
Extensions	

**Functionality Tests**

Start	
Drives Forward	
Drives Backwards	
Brake Pedal Functions	

Functional Test Notes

**Supporting Documents**

Certificate of Registration	
Vehicle Licence Certificate	
Service Record	
Other	

**General**

The Detailed Equipment Information is limited in scope, and BKB Auctioneers has not inspected any aspects or components of the equipment other than those expressly set forth herein. Unless expressly stated, we make no representations or warranties, express or implied, concerning the equipment or its components, including without limitation any representations or warranties concerning functionality, conformity or compliance with any safety standard or requirement of any applicable authority or regulatory body, fitness for any particular purpose, or merchantability. You are strongly advised to perform your own detailed

**Functions**

The Equipment is not tested under load or operated in all available gears. We make no representation or warranty that equipment is operating in accordance with manufacturers' specifications. No inspection has been performed with respect to any functionality aspect other than those expressly included herein. Only select photos have been provided for individual undercarriage components, and may not be indicative of the condition of the entire undercarriage as a whole.

**Dimensions**

Measurements are given as an estimate only. Actual loaded dimensions may vary based on truck/trailer height and the loaded machine configuration/position. It is the buyer's responsibility to measure all loads before leaving our auction site to ensure the load is safe for transport. All measurements should be verified by the buyer. DO NOT rely on these measurements for transportation purposes.



SCAN ME #4A



Lot Nr.

4B

Date

16 November 2021

**Detail Information**

Location	Port Alfred
Year	2020
Manufacturer	Van Zyl Staalwerke
Model	Wool Press
Asset Type	Other Agri Equipment
Serial Number or VIN	
Condition	5 - Very Good
Hours	
Km's	

Comes with Notes	Hydraulic Wool press; 2 Bin press with 3 phase motor; Motor can be covered for single phase power; As good as new; Pressed only 10 Bales
------------------	--



**Operator Station**

Cab Type	
Transmission Detail: Speed	
Transmission Detail: Shift Type	
Differential Lock	
Notes	

**Engine**

Fuel Type	
Manufacturer	
Model	
Notes	

**Rear Options**

Hitch Type	
PTO	
Hydraulic Outlets	
Notes	

**Body Details**

Size	
Type	
Notes	

**Drive Train**

Notes	
-------	--

**Weights**

Front Wheel Weights	
Back Wheel Weights	
Front Nose Weights	
Notes	

**Undercarriage/Suspension**

Tyre Manufacturer	
Front Tyre Size	
Rear Tyre Size	
Notes	

**Accessories**

Other Extensions	
------------------	--

**Functionality Tests**

Start	
Drives Forward	
Drives Backwards	
Brake Pedal Functions	

Functional Test Notes

**Supporting Documents**

Certificate of Registration	
Vehicle Licence Certificate	
Service Record	
Other	



**General**

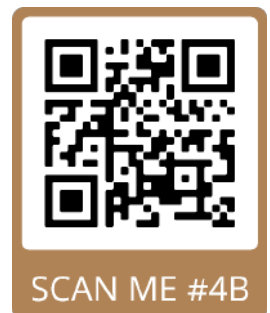
The Detailed Equipment Information is limited in scope, and BKB Auctioneers has not inspected any aspects or components of the equipment other than those expressly set forth herein. Unless expressly stated, we make no representations or warranties, express or implied, concerning the equipment or its components, including without limitation any representations or warranties concerning functionality, conformity or compliance with any safety standard or requirement of any applicable authority or regulatory body, fitness for any particular purpose, or merchantability. You are strongly advised to perform your

**Functions**

The Equipment is not tested under load or operated in all available gears. We make no representation or warranty that equipment is operating in accordance with manufacturers' specifications. No inspection has been performed with respect to any functionality aspect other than those expressly included herein. Only select photos have been provided for individual undercarriage components, and may not be indicative of the condition of the entire undercarriage as a whole.

**Dimensions**

Measurements are given as an estimate only. Actual loaded dimensions may vary based on truck/trailer height and the loaded machine configuration/position. It is the buyer's responsibility to measure all loads before leaving our auction site to ensure the load is safe for transport. All measurements should be verified by the buyer. DO NOT rely on these measurements for transportation purposes.



Lot Nr.

5

Date

16 November 2021

**Detail Information**

Location	Somerset Oos
Year	
Manufacturer	Brilliant Sure
Model	
Asset Type	
Serial Number or VIN	
Condition	
Hours	
Km's	
Comes with	
Notes	Fynsaadplanter



**Operator Station**

Cab Type	
Transmission Detail: Speed	
Transmission Detail: Shift Type	
Differential Lock	
Notes	

**Engine**

Fuel Type	
Manufacturer	
Model	
Notes	

**Rear Options**

Hitch Type	
PTO	
Hydraulic Outlets	
Notes	



**Body Details**

Size	
Type	
Notes	

**Drive Train**

Notes	
-------	--

**Weights**

Front Wheel Weights	
Back Wheel Weights	
Front Nose Weights	
Notes	

**Undercarriage/Suspension**

Tyre Manufacturer	
Front Tyre Size	
Rear Tyre Size	
Notes	



**Accessories**

Other	
Extensions	

**Functionality Tests**

Start	
Drives Forward	
Drives Backwards	
Brake Pedal Functions	

**Supporting Documents**

Certificate of Registration	
Vehicle Licence Certificate	
Service Record	
Other	

Functional Test Notes

--

**General**

The Detailed Equipment Information is limited in scope, and BKB Auctioneers has not inspected any aspects or components of the equipment other than those expressly set forth herein. Unless expressly stated, we make no representations or warranties, express or implied, concerning the equipment or its components, including without limitation any representations or warranties concerning functionality, conformity or compliance with any safety standard or requirement of any applicable authority or regulatory body, fitness for any particular purpose, or merchantability. You are strongly advised to perform your own detailed inspection of the equipment prior to bidding.

**Functions**

The Equipment is not tested under load or operated in all available gears. We make no representation or warranty that equipment is operating in accordance with manufacturers' specifications. No inspection has been performed with respect to any functionality aspect other than those expressly included herein. Only select photos have been provided for individual undercarriage components, and may not be indicative of the condition of the entire undercarriage as a whole.

**Dimensions**

Measurements are given as an estimate only. Actual loaded dimensions may vary based on truck/trailer height and the loaded machine configuration/position. It is the buyer's responsibility to measure all loads before leaving our auction site to ensure the load is safe for transport. All measurements should be verified by the buyer. DO NOT rely on these measurements for transportation purposes.





Lot Nr.

5A

Date

16 November 2021

**Detail Information**

Location	Dewetsdorp
Year	
Manufacturer	
Model	Mielie Tafel
Asset Type	
Serial Number or VIN	
Condition	
Hours	
Km's	
Comes with	
Notes	4 ry; 3 voet

**Operator Station**

Cab Type	
Transmission Detail: Speed	
Transmission Detail: Shift Type	
Differential Lock	
Notes	

**Engine**

Fuel Type	
Manufacturer	
Model	
Notes	

**Rear Options**

Hitch Type	
PTO	
Hydraulic Outlets	
Notes	

**Body Details**

Size	
Type	
Notes	

**Drive Train**

Notes	
-------	--

**Weights**

Front Wheel Weights	
Back Wheel Weights	
Front Nose Weights	
Notes	

**Undercarriage/Suspension**

Tyre Manufacturer	
Front Tyre Size	
Rear Tyre Size	
Notes	

**Accessories**

Other	
Extensions	

**Functionality Tests**

Start	
Drives Forward	
Drives Backwards	
Brake Pedal Functions	

Functional Test Notes

--

**Supporting Documents**

Certificate of Registration	
Vehicle Licence Certificate	
Service Record	
Other	

**General**

The Detailed Equipment Information is limited in scope, and BKB Auctioneers has not inspected any aspects or components of the equipment other than those expressly set forth herein. Unless expressly stated, we make no representations or warranties, express or implied, concerning the equipment or its components, including without limitation any representations or warranties concerning functionality, conformity or compliance with any safety standard or requirement of any applicable authority or regulatory body, fitness for any particular purpose, or merchantability. You are strongly advised to perform your own detailed inspection

**Functions**

The Equipment is not tested under load or operated in all available gears. We make no representation or warranty that equipment is operating in accordance with manufacturers' specifications. No inspection has been performed with respect to any functionality aspect other than those expressly included herein. Only select photos have been provided for individual undercarriage components, and may not be indicative of the condition of the entire undercarriage as a whole.

**Dimensions**

Measurements are given as an estimate only. Actual loaded dimensions may vary based on truck/trailer height and the loaded machine configuration/position. It is the buyer's responsibility to measure all loads before leaving our auction site to ensure the load is safe for transport. All measurements should be verified by the buyer. DO NOT rely on these measurements for transportation purposes.



SCAN ME #5A

Lot Nr.

5B

Date

16 November 2021

**Detail Information**

Location	Dewetsdorp
Year	
Manufacturer	
Model	Koring Tafel
Asset Type	
Serial Number or VIN	
Condition	
Hours	
Km's	
Comes with	
Notes	17 voet; met karretjie



**Operator Station**

Cab Type	
Transmission Detail: Speed	
Transmission Detail: Shift Type	
Differential Lock	
Notes	



**Engine**

Fuel Type	
Manufacturer	
Model	
Notes	

**Rear Options**

Hitch Type	
PTO	
Hydraulic Outlets	
Notes	



**Body Details**

Size	
Type	
Notes	

**Drive Train**

Notes	
-------	--

**Weights**

Front Wheel Weights	
Back Wheel Weights	
Front Nose Weights	
Notes	



**Undercarriage/Suspension**

Tyre Manufacturer	
Front Tyre Size	
Rear Tyre Size	
Notes	

**Accessories**

Other	
Extensions	

**Functionality Tests**

Start	
Drives Forward	
Drives Backwards	
Brake Pedal Functions	

**Supporting Documents**

Certificate of Registration	
Vehicle Licence Certificate	
Service Record	
Other	

Functional Test Notes

--

**General**

The Detailed Equipment Information is limited in scope, and BKB Auctioneers has not inspected any aspects or components of the equipment other than those expressly set forth herein. Unless expressly stated, we make no representations or warranties, express or implied, concerning the equipment or its components, including without limitation any representations or warranties concerning functionality, conformity or compliance with any safety standard or requirement of any applicable authority or regulatory body, fitness for any particular purpose, or merchantability. You are strongly advised to perform your own detailed inspection

**Functions**

The Equipment is not tested under load or operated in all available gears. We make no representation or warranty that equipment is operating in accordance with manufacturers' specifications. No inspection has been performed with respect to any functionality aspect other than those expressly included herein. Only select photos have been provided for individual undercarriage components, and may not be indicative of the condition of the entire undercarriage as a whole.

**Dimensions**

Measurements are given as an estimate only. Actual loaded dimensions may vary based on truck/trailer height and the loaded machine configuration/position. It is the buyer's responsibility to measure all loads before leaving our auction site to ensure the load is safe for transport. All measurements should be verified by the buyer. DO NOT rely on these measurements for transportation purposes.





**Detail Information**

Location	Dewetsdorp
Year	
Manufacturer	
Model	Sonneblom Tafel
Asset Type	
Serial Number or VIN	
Condition	
Hours	
Km's	
Comes with	
Notes	17 voet; sonder karretjie



**Operator Station**

Cab Type	
Transmission Detail: Speed	
Transmission Detail: Shift Type	
Differential Lock	
Notes	

**Engine**

Fuel Type	
Manufacturer	
Model	
Notes	

**Rear Options**

Hitch Type	
PTO	
Hydraulic Outlets	
Notes	

**Body Details**

Size	
Type	
Notes	

**Drive Train**

Notes	
-------	--

**Weights**

Front Wheel Weights	
Back Wheel Weights	
Front Nose Weights	
Notes	

**Undercarriage/Suspension**

Tyre Manufacturer	
Front Tyre Size	
Rear Tyre Size	
Notes	

**Accessories**

Other	
Extensions	

**Functionality Tests**

Start	
Drives Forward	
Drives Backwards	
Brake Pedal Functions	

Functional Test Notes

--

**Supporting Documents**

Certificate of Registration	
Vehicle Licence Certificate	
Service Record	
Other	

**General**

The Detailed Equipment Information is limited in scope, and BKB Auctioneers has not inspected any aspects or components of the equipment other than those expressly set forth herein. Unless expressly stated, we make no representations or warranties, express or implied, concerning the equipment or its components, including without limitation any representations or warranties concerning functionality, conformity or compliance with any safety standard or requirement of any applicable authority or regulatory body, fitness for any particular purpose, or merchantability. You are strongly advised to perform your own detailed

**Functions**

The Equipment is not tested under load or operated in all available gears. We make no representation or warranty that equipment is operating in accordance with manufacturers' specifications. No inspection has been performed with respect to any functionality aspect other than those expressly included herein. Only select photos have been provided for individual undercarriage components, and may not be indicative of the condition of the entire undercarriage as a whole.

**Dimensions**

Measurements are given as an estimate only. Actual loaded dimensions may vary based on truck/trailer height and the loaded machine configuration/position. It is the buyer's responsibility to measure all loads before leaving our auction site to ensure the load is safe for transport. All measurements should be verified by the buyer. DO NOT rely on these measurements for transportation purposes.



SCAN ME #5C

Lot Nr.

6

Date

16 November 2021

**Detail Information**

Location	Somerset Oos
Year	
Manufacturer	Drotsky
Model	
Asset Type	
Serial Number or VIN	
Condition	
Hours	
Km's	
Comes with	
Notes	Hammermeul (2.2 - 3.9 ton; 37 kw)



**Operator Station**

Cab Type	
Transmission Detail: Speed	
Transmission Detail: Shift Type	
Differential Lock	
Notes	

**Engine**

Fuel Type	
Manufacturer	
Model	
Notes	



**Rear Options**

Hitch Type	
PTO	
Hydraulic Outlets	
Notes	

**Body Details**

Size	
Type	
Notes	

**Drive Train**

Notes	
-------	--

**Weights**

Front Wheel Weights	
Back Wheel Weights	
Front Nose Weights	
Notes	



**Undercarriage/Suspension**

Tyre Manufacturer	
Front Tyre Size	
Rear Tyre Size	
Notes	

**Accessories**

Other Extensions	
------------------	--

**Functionality Tests**

Start	
Drives Forward	
Drives Backwards	
Brake Pedal Functions	

**Supporting Documents**

Certificate of Registration	
Vehicle Licence Certificate	
Service Record	
Other	

Functional Test Notes

**General**

The Detailed Equipment Information is limited in scope, and BKB Auctioneers has not inspected any aspects or components of the equipment other than those expressly set forth herein. Unless expressly stated, we make no representations or warranties, express or implied, concerning the equipment or its components, including without limitation any representations or warranties concerning functionality, conformity or compliance with any safety standard or requirement of any applicable authority or regulatory body, fitness for any particular purpose, or merchantability. You are strongly advised to perform your own detailed inspection of the equipment prior to bidding.

**Functions**

The Equipment is not tested under load or operated in all available gears. We make no representation or warranty that equipment is operating in accordance with manufacturers' specifications. No inspection has been performed with respect to any functionality aspect other than those expressly included herein. Only select photos have been provided for individual undercarriage components, and may not be indicative of the condition of the entire undercarriage as a whole.

**Dimensions**

Measurements are given as an estimate only. Actual loaded dimensions may vary based on truck/trailer height and the loaded machine configuration/position. It is the buyer's responsibility to measure all loads before leaving our auction site to ensure the load is safe for transport. All measurements should be verified by the buyer. DO NOT rely on these measurements for transportation purposes.



Lot Nr.

7

Date

16 November 2021

**Detail Information**

Location	Somerset Oos
Year	
Manufacturer	Monosem
Model	
Asset Type	
Serial Number or VIN	
Condition	
Hours	
Km's	
Comes with	
Notes	Fynsaadplanter (2 ry)



**Operator Station**

Cab Type	
Transmission Detail: Speed	
Transmission Detail: Shift Type	
Differential Lock	
Notes	

**Engine**

Fuel Type	
Manufacturer	
Model	
Notes	

**Rear Options**

Hitch Type	
PTO	
Hydraulic Outlets	
Notes	

**Body Details**

Size	
Type	
Notes	

**Drive Train**

Notes	
-------	--

**Weights**

Front Wheel Weights	
Back Wheel Weights	
Front Nose Weights	
Notes	

**Undercarriage/Suspension**

Tyre Manufacturer	
Front Tyre Size	
Rear Tyre Size	
Notes	

**Accessories**

Other Extensions	
------------------	--

**Functionality Tests**

Start	
Drives Forward	
Drives Backwards	
Brake Pedal Functions	

Functional Test Notes

**Supporting Documents**

Certificate of Registration	
Vehicle Licence Certificate	
Service Record	
Other	



**General**

The Detailed Equipment Information is limited in scope, and BKB Auctioneers has not inspected any aspects or components of the equipment other than those expressly set forth herein. Unless expressly stated, we make no representations or warranties, express or implied, concerning the equipment or its components, including without limitation any representations or warranties concerning functionality, conformity or compliance with any safety standard or requirement of any applicable authority or regulatory body, fitness for any particular purpose, or merchantability. You are strongly advised to perform your own detailed inspection of the equipment prior to bidding.

**Functions**

The Equipment is not tested under load or operated in all available gears. We make no representation or warranty that equipment is operating in accordance with manufacturers' specifications. No inspection has been performed with respect to any functionality aspect other than those expressly included herein. Only select photos have been provided for individual undercarriage components, and may not be indicative of the condition of the entire undercarriage as a whole.

**Dimensions**

Measurements are given as an estimate only. Actual loaded dimensions may vary based on truck/trailer height and the loaded machine configuration/position. It is the buyer's responsibility to measure all loads before leaving our auction site to ensure the load is safe for transport. All measurements should be verified by the buyer. DO NOT rely on these measurements for transportation purposes.





Lot Nr.

8

Date

16 November 2021

**Detail Information**

Location	Burgersdorp
Year	2004
Manufacturer	Yellowline
Model	
Asset Type	Seeding and Tillage Equipment
Serial Number or VIN	
Condition	4 - Good
Hours	
Km's	

Comes with	
Notes	25 skotteldis; swaardiens; Verkoop slegs omdat hulle 2 ander gekoop het



**Operator Station**

Cab Type	
Transmission Detail: Speed	
Transmission Detail: Shift Type	
Differential Lock	
Notes	

**Engine**

Fuel Type	
Manufacturer	
Model	
Notes	

**Rear Options**

Hitch Type	
PTO	
Hydraulic Outlets	
Notes	



**Body Details**

Size	
Type	
Notes	

**Drive Train**

Notes	
-------	--

**Weights**

Front Wheel Weights	
Back Wheel Weights	
Front Nose Weights	
Notes	

**Undercarriage/Suspension**

Tyre Manufacturer	
Front Tyre Size	
Rear Tyre Size	
Notes	



**Accessories**

Other	
Extensions	

**Functionality Tests**

Start	
Drives Forward	
Drives Backwards	
Brake Pedal Functions	

**Supporting Documents**

Certificate of Registration	
Vehicle Licence Certificate	
Service Record	
Other	

Functional Test Notes

**General**

The Detailed Equipment Information is limited in scope, and BKB Auctioneers has not inspected any aspects or components of the equipment other than those expressly set forth herein. Unless expressly stated, we make no representations or warranties, express or implied, concerning the equipment or its components, including without limitation any representations or warranties concerning functionality, conformity or compliance with any safety standard or requirement of any applicable authority or regulatory body, fitness for any particular purpose, or merchantability. You are strongly advised to perform your own detailed inspection of the equipment prior to bidding.

**Functions**

The Equipment is not tested under load or operated in all available gears. We make no representation or warranty that equipment is operating in accordance with manufacturers' specifications. No inspection has been performed with respect to any functionality aspect other than those expressly included herein. Only select photos have been provided for individual undercarriage components, and may not be indicative of the condition of the entire undercarriage as a whole.

**Dimensions**

Measurements are given as an estimate only. Actual loaded dimensions may vary based on truck/trailer height and the loaded machine configuration/position. It is the buyer's responsibility to measure all loads before leaving our auction site to ensure the load is safe for transport. All measurements should be verified by the buyer. DO NOT rely on these measurements for transportation purposes.



Lot Nr.

10

Date

16 November 2021

**Detail Information**

Location	Somerset Oos
Year	2018
Manufacturer	ILGI
Model	
Asset Type	Other Agri Equipment
Serial Number or VIN	
Condition	5 - Very Good
Hours	
Km's	
Comes with	Fire fighter
Notes	Onkruitspuit, 600 l



**Operator Station**

Cab Type	
Transmission Detail: Speed	
Transmission Detail: Shift Type	
Differential Lock	
Notes	

**Engine**

Fuel Type	
Manufacturer	
Model	
Notes	

**Rear Options**

Hitch Type	
PTO	
Hydraulic Outlets	
Notes	

**Body Details**

Size	
Type	
Notes	

**Drive Train**

Notes	
-------	--

**Weights**

Front Wheel Weights	
Back Wheel Weights	
Front Nose Weights	
Notes	

**Undercarriage/Suspension**

Tyre Manufacturer	
Front Tyre Size	
Rear Tyre Size	
Notes	

**Accessories**

Other Extensions	
------------------	--

**Functionality Tests**

Start	
Drives Forward	
Drives Backwards	
Brake Pedal Functions	

Functional Test Notes

**Supporting Documents**

Certificate of Registration	
Vehicle Licence Certificate	
Service Record	
Other	



**General**

The Detailed Equipment Information is limited in scope, and BKB Auctioneers has not inspected any aspects or components of the equipment other than those expressly set forth herein. Unless expressly stated, we make no representations or warranties, express or implied, concerning the equipment or its components, including without limitation any representations or warranties concerning functionality, conformity or compliance with any safety standard or requirement of any applicable authority or regulatory body, fitness for any particular purpose, or merchantability. You are strongly advised to perform your own detailed inspection of the equipment prior to bidding.

**Functions**

The Equipment is not tested under load or operated in all available gears. We make no representation or warranty that equipment is operating in accordance with manufacturers' specifications. No inspection has been performed with respect to any functionality aspect other than those expressly included herein. Only select photos have been provided for individual undercarriage components, and may not be indicative of the condition of the entire undercarriage as a whole.

**Dimensions**

Measurements are given as an estimate only. Actual loaded dimensions may vary based on truck/trailer height and the loaded machine configuration/position. It is the buyer's responsibility to measure all loads before leaving our auction site to ensure the load is safe for transport. All measurements should be verified by the buyer. DO NOT rely on these measurements for transportation purposes.





Lot Nr.

10A

Date

16 November 2021

**Detail Information**

Location	Koringberg
Year	2014
Manufacturer	Sulky
Model	DPX 28
Asset Type	Seeding and Tillage Equipment
Serial Number or VIN	14/DT 02 160
Condition	4 - Good
Hours	
Km's	

Comes with	
Notes	Sulky Strooier; Maks 30m Strooiwydte / 1500L

**Operator Station**

Cab Type	
Transmission Detail: Speed	
Transmission Detail: Shift Type	
Differential Lock	
Notes	

**Engine**

Fuel Type	
Manufacturer	
Model	
Notes	

**Rear Options**

Hitch Type	
PTO	
Hydraulic Outlets	
Notes	

**Body Details**

Size	
Type	
Notes	

**Drive Train**

Notes	
-------	--

**Weights**

Front Wheel Weights	
Back Wheel Weights	
Front Nose Weights	
Notes	

**Undercarriage/Suspension**

Tyre Manufacturer	
Front Tyre Size	
Rear Tyre Size	
Notes	

**Accessories**

Other	
Extensions	

**Functionality Tests**

Start	
Drives Forward	
Drives Backwards	
Brake Pedal Functions	

Functional Test Notes

**Supporting Documents**

Certificate of Registration	
Vehicle Licence Certificate	
Service Record	
Other	



**General**

The Detailed Equipment Information is limited in scope, and BKB Auctioneers has not inspected any aspects or components of the equipment other than those expressly set forth herein. Unless expressly stated, we make no representations or warranties, express or implied, concerning the equipment or its components, including without limitation any representations or warranties concerning functionality, conformity or compliance with any safety standard or requirement of any applicable authority or regulatory body, fitness for any particular purpose, or merchantability. You are strongly advised to perform your own detailed

**Functions**

The Equipment is not tested under load or operated in all available gears. We make no representation or warranty that equipment is operating in accordance with manufacturers' specifications. No inspection has been performed with respect to any functionality aspect other than those expressly included herein. Only select photos have been provided for individual undercarriage components, and may not be indicative of the condition of the entire undercarriage as a whole.

**Dimensions**

Measurements are given as an estimate only. Actual loaded dimensions may vary based on truck/trailer height and the loaded machine configuration/position. It is the buyer's responsibility to measure all loads before leaving our auction site to ensure the load is safe for transport. All measurements should be verified by the buyer. DO NOT rely on these measurements for transportation purposes.





Lot Nr.

11

Date

16 November 2021

**Detail Information**

Location	Somerset Oos
Year	2014
Manufacturer	John Deere
Model	5725
Asset Type	Tractor
Serial Number or VIN	1P05725XLDT026915
Condition	5 - Very Good
Hours	1479
Km's	
Comes with	Laaigraaf en vurk
Notes	



**Operator Station**

Cab Type	
Transmission Detail: Speed	
Transmission Detail: Shift Type	Manual
Differential Lock	Yes
Notes	



**Engine**

Fuel Type	Diesel
Manufacturer	John Deere
Model	5725
Notes	

**Rear Options**

Hitch Type	
PTO	Yes
Hydraulic Outlets	Yes
Notes	

**Body Details**

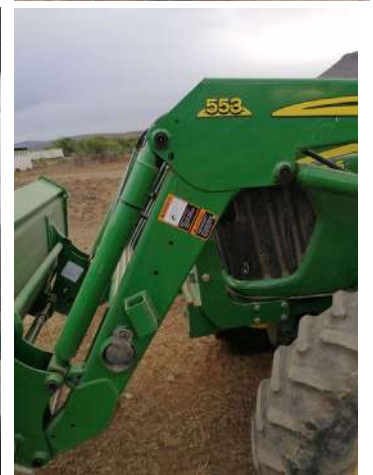
Size	
Type	
Notes	

**Drive Train**

Notes	
-------	--

**Weights**

Front Wheel Weights	Yes
Back Wheel Weights	Yes
Front Nose Weights	Yes
Notes	



**Undercarriage/Suspension**

Tyre Manufacturer	Firestone
Front Tyre Size	12.4-24 (45% tread)
Rear Tyre Size	18.4-30 (65% tread)
Notes	

**Accessories**

Other Extensions	Attachable Fork
------------------	-----------------

**Functionality Tests**

Start	YES
Drives Forward	YES
Drives Backwards	YES
Brake Pedal Functions	YES

**Supporting Documents**

Certificate of Registration	
Vehicle Licence Certificate	
Service Record	YES
Other	

Functional Test Notes

**General**

The Detailed Equipment Information is limited in scope, and BKB Auctioneers has not inspected any aspects or components of the equipment other than those expressly set forth herein. Unless expressly stated, we make no representations or warranties, express or implied, concerning the equipment or its components, including without limitation any representations or warranties concerning functionality, conformity or compliance with any safety standard or requirement of any applicable authority or regulatory body, fitness for any particular purpose, or merchantability. You are strongly advised to perform your own detailed inspection of the equipment prior to bidding.

**Functions**

The Equipment is not tested under load or operated in all available gears. We make no representation or warranty that equipment is operating in accordance with manufacturers' specifications. No inspection has been performed with respect to any functionality aspect other than those expressly included herein. Only select photos have been provided for individual undercarriage components, and may not be indicative of the condition of the entire undercarriage as a whole.

**Dimensions**

Measurements are given as an estimate only. Actual loaded dimensions may vary based on truck/trailer height and the loaded machine configuration/position. It is the buyer's responsibility to measure all loads before leaving our auction site to ensure the load is safe for transport. All measurements should be verified by the buyer. DO NOT rely on these measurements for transportation purposes.



Scan me #11

Lot Nr.

12

Date

16 November 2021

**Detail Information**

Location	Klipheuwel
Year	1984
Manufacturer	Mercedes Benz
Model	1213
Asset Type	Transportation
Serial Number or VIN	38100764674679
Condition	4 - Good
Hours	
Km's	

Comes with Notes	Enjin gedoen Desember 2020; Respray Oktober 2021
------------------	--



**Operator Station**

Cab Type	
Transmission Detail: Speed	5
Transmission Detail: Shift Type	Manual
Differential Lock	No
Notes	

**Engine**

Fuel Type	Diesel
Manufacturer	Mercedes Benz
Model	
Notes	

**Rear Options**

Hitch Type	
PTO	
Hydraulic Outlets	
Notes	



**Body Details**

Size	6m Platbak
Type	
Notes	

**Drive Train**

Notes	
-------	--

**Weights**

Front Wheel Weights	N/A
Back Wheel Weights	N/A
Front Nose Weights	N/A
Notes	



**Undercarriage/Suspension**

Tyre Manufacturer	
Front Tyre Size	900-20
Rear Tyre Size	900-20
Notes	80% Tread

**Accessories**

Other Extensions	
------------------	--

**Functionality Tests**

Start	YES
Drives Forward	YES
Drives Backwards	YES
Brake Pedal Functions	YES

**Supporting Documents**

Certificate of Registration	
Vehicle Licence Certificate	YES
Service Record	YES
Other	

Functional Test Notes

**General**

The Detailed Equipment Information is limited in scope, and BKB Auctioneers has not inspected any aspects or components of the equipment other than those expressly set forth herein. Unless expressly stated, we make no representations or warranties, express or implied, concerning the equipment or its components, including without limitation any representations or warranties concerning functionality, conformity or compliance with any safety standard or requirement of any applicable authority or regulatory body, fitness for any particular purpose, or merchantability. You are strongly advised to perform your own detailed inspection of the equipment prior to bidding.

**Functions**

The Equipment is not tested under load or operated in all available gears. We make no representation or warranty that equipment is operating in accordance with manufacturers' specifications. No inspection has been performed with respect to any functionality aspect other than those expressly included herein. Only select photos have been provided for individual undercarriage components, and may not be indicative of the condition of the entire undercarriage as a whole.

**Dimensions**

Measurements are given as an estimate only. Actual loaded dimensions may vary based on truck/trailer height and the loaded machine configuration/position. It is the buyer's responsibility to measure all loads before leaving our auction site to ensure the load is safe for transport. All measurements should be verified by the buyer. DO NOT rely on these measurements for transportation purposes.





Lot Nr.

13

Date

16 November 2021

**Detail Information**

Location	Caledon
Year	2011
Manufacturer	McCormick
Model	MTX 3
Asset Type	Tractor
Serial Number or VIN	5WCCN21212
Condition	4 - Good
Hours	7874
Km's	

Comes with Notes	106 kw
------------------	--------



**Operator Station**

Cab Type	
Transmission Detail: Speed	
Transmission Detail: Shift Type	Manual
Differential Lock	
Notes	

**Engine**

Fuel Type	Diesel
Manufacturer	
Model	F4GR9684J J604
Notes	MTX 150 - 139HP @ 2200 RPM

**Rear Options**

Hitch Type	
PTO	Yes
Hydraulic Outlets	Yes
Notes	

**Body Details**

Size	
Type	
Notes	

**Drive Train**

Notes	
-------	--

**Weights**

Front Wheel Weights	
Back Wheel Weights	Yes
Front Nose Weights	Yes
Notes	

**Undercarriage/Suspension**

Tyre Manufacturer	Firestone
Front Tyre Size	16.9-28 (75% tread)
Rear Tyre Size	20.8-38 (85% tread)
Notes	

**Accessories**

Other Extensions	
------------------	--

**Functionality Tests**

Start	YES
Drives Forward	YES
Drives Backwards	YES
Brake Pedal Functions	YES

**Supporting Documents**

Certificate of Registration	YES
Vehicle Licence Certificate	YES
Service Record	YES
Other	

Functional Test Notes

**General**

The Detailed Equipment Information is limited in scope, and BKB Auctioneers has not inspected any aspects or components of the equipment other than those expressly set forth herein. Unless expressly stated, we make no representations or warranties, express or implied, concerning the equipment or its components, including without limitation any representations or warranties concerning functionality, conformity or compliance with any safety standard or requirement of any applicable authority or regulatory body, fitness for any particular purpose, or merchantability. You are strongly advised to perform your own detailed inspection of the equipment prior to bidding.

**Functions**

The Equipment is not tested under load or operated in all available gears. We make no representation or warranty that equipment is operating in accordance with manufacturers' specifications. No inspection has been performed with respect to any functionality aspect other than those expressly included herein. Only select photos have been provided for individual undercarriage components, and may not be indicative of the condition of the entire undercarriage as a whole.

**Dimensions**

Measurements are given as an estimate only. Actual loaded dimensions may vary based on truck/trailer height and the loaded machine configuration/position. It is the buyer's responsibility to measure all loads before leaving our auction site to ensure the load is safe for transport. All measurements should be verified by the buyer. DO NOT rely on these measurements for transportation purposes.



Scan me #13



Lot Nr.

14

Date

16 November 2021

**Detail Information**

Location	Caledon
Year	1997
Manufacturer	John Deere
Model	2140
Asset Type	Tractor
Serial Number or VIN	CJ2140X000222
Condition	3 - Fair
Hours	16328
Km's	

Comes with	
Notes	

**Operator Station**

Cab Type	
Transmission Detail: Speed	
Transmission Detail: Shift Type	Manual
Differential Lock	No
Notes	

**Engine**

Fuel Type	Diesel
Manufacturer	John Deere
Model	2140
Notes	

**Rear Options**

Hitch Type	
PTO	Yes
Hydraulic Outlets	Yes
Notes	

**Body Details**

Size	
Type	
Notes	

**Drive Train**

Notes	2 x 4
-------	-------

**Weights**

Front Wheel Weights	No
Back Wheel Weights	Yes
Front Nose Weights	Yes
Notes	

**Undercarriage/Suspension**

Tyre Manufacturer	General
Front Tyre Size	10.0-16
Rear Tyre Size	18.4/15-34
Notes	15% Tread

**Accessories**

Other	
Extensions	

**Functionality Tests**

Start	YES
Drives Forward	YES
Drives Backwards	YES
Brake Pedal Functions	YES

**Supporting Documents**

Certificate of Registration	YES
Vehicle Licence Certificate	YES
Service Record	
Other	

Functional Test Notes	
-----------------------	--

**General**

The Detailed Equipment Information is limited in scope, and BKB Auctioneers has not inspected any aspects or components of the equipment other than those expressly set forth herein. Unless expressly stated, we make no representations or warranties, express or implied, concerning the equipment or its components, including without limitation any representations or warranties concerning functionality, conformity or compliance with any safety standard or requirement of any applicable authority or regulatory body, fitness for any particular purpose, or merchantability. You are strongly advised to perform your own detailed inspection of the equipment prior to bidding.

**Functions**

The Equipment is not tested under load or operated in all available gears. We make no representation or warranty that equipment is operating in accordance with manufacturers' specifications. No inspection has been performed with respect to any functionality aspect other than those expressly included herein. Only select photos have been provided for individual undercarriage components, and may not be indicative of the condition of the entire undercarriage as a whole.

**Dimensions**

Measurements are given as an estimate only. Actual loaded dimensions may vary based on truck/trailer height and the loaded machine configuration/position. It is the buyer's responsibility to measure all loads before leaving our auction site to ensure the load is safe for transport. All measurements should be verified by the buyer. DO NOT rely on these measurements for transportation purposes.



Scan me #14

Lot Nr.

15

Date

16 November 2021

**Detail Information**

Location	Bloemfontein
Year	2021
Manufacturer	Landini Solis
Model	75 RX Turbo 4 x 4
Asset Type	Tractor
Serial Number or VIN	MEMYWVG53RH000458
Condition	5 - Very Good
Hours	
Km's	
Comes with	
Notes	Nuut



**Operator Station**

Cab Type	
Transmission Detail: Speed	
Transmission Detail: Shift Type	
Differential Lock	
Notes	



**Engine**

Fuel Type	
Manufacturer	
Model	
Notes	

**Rear Options**

Hitch Type	
PTO	
Hydraulic Outlets	
Notes	

**Body Details**

Size	
Type	
Notes	



**Drive Train**

Notes	
-------	--

**Weights**

Front Wheel Weights	
Back Wheel Weights	
Front Nose Weights	
Notes	

**Undercarriage/Suspension**

Tyre Manufacturer	
Front Tyre Size	
Rear Tyre Size	
Notes	



**Accessories**

Other	
Extensions	

**Functionality Tests**

Start	
Drives Forward	
Drives Backwards	
Brake Pedal Functions	

**Supporting Documents**

Certificate of Registration	
Vehicle Licence Certificate	
Service Record	
Other	

Functional Test Notes

**General**

The Detailed Equipment Information is limited in scope, and BKB Auctioneers has not inspected any aspects or components of the equipment other than those expressly set forth herein. Unless expressly stated, we make no representations or warranties, express or implied, concerning the equipment or its components, including without limitation any representations or warranties concerning functionality, conformity or compliance with any safety standard or requirement of any applicable authority or regulatory body, fitness for any particular purpose, or merchantability. You are strongly advised to perform your own detailed inspection of the equipment prior to bidding.

**Functions**

The Equipment is not tested under load or operated in all available gears. We make no representation or warranty that equipment is operating in accordance with manufacturers' specifications. No inspection has been performed with respect to any functionality aspect other than those expressly included herein. Only select photos have been provided for individual undercarriage components, and may not be indicative of the condition of the entire undercarriage as a whole.

**Dimensions**

Measurements are given as an estimate only. Actual loaded dimensions may vary based on truck/trailer height and the loaded machine configuration/position. It is the buyer's responsibility to measure all loads before leaving our auction site to ensure the load is safe for transport. All measurements should be verified by the buyer. DO NOT rely on these measurements for transportation purposes.





Lot Nr.

16

Date

16 November 2021

**Detail Information**

Location	Somerset Oos
Year	1994
Manufacturer	RMH
Model	212 Voermenger
Asset Type	Hay & Forage Equipment
Serial Number or VIN	
Condition	
Hours	
Km's	
Comes with	
Notes	1 ton; met tapkar



**Operator Station**

Cab Type	
Transmission Detail: Speed	
Transmission Detail: Shift Type	
Differential Lock	
Notes	



**Engine**

Fuel Type	
Manufacturer	
Model	
Notes	

**Rear Options**

Hitch Type	
PTO	
Hydraulic Outlets	
Notes	

**Body Details**

Size	
Type	
Notes	



**Drive Train**

Notes	
-------	--

**Weights**

Front Wheel Weights	
Back Wheel Weights	
Front Nose Weights	
Notes	

**Undercarriage/Suspension**

Tyre Manufacturer	
Front Tyre Size	
Rear Tyre Size	
Notes	

**Accessories**

Other Extensions	
------------------	--

**Functionality Tests**

Start	
Drives Forward	
Drives Backwards	
Brake Pedal Functions	

**Supporting Documents**

Certificate of Registration	
Vehicle Licence Certificate	
Service Record	
Other	

Functional Test Notes

**General**

The Detailed Equipment Information is limited in scope, and BKB Auctioneers has not inspected any aspects or components of the equipment other than those expressly set forth herein. Unless expressly stated, we make no representations or warranties, express or implied, concerning the equipment or its components, including without limitation any representations or warranties concerning functionality, conformity or compliance with any safety standard or requirement of any applicable authority or regulatory body, fitness for any particular purpose, or merchantability. You are strongly advised to perform your own detailed inspection of the equipment prior to bidding.

**Functions**

The Equipment is not tested under load or operated in all available gears. We make no representation or warranty that equipment is operating in accordance with manufacturers' specifications. No inspection has been performed with respect to any functionality aspect other than those expressly included herein. Only select photos have been provided for individual undercarriage components, and may not be indicative of the condition of the entire undercarriage as a whole.

**Dimensions**

Measurements are given as an estimate only. Actual loaded dimensions may vary based on truck/trailer height and the loaded machine configuration/position. It is the buyer's responsibility to measure all loads before leaving our auction site to ensure the load is safe for transport. All measurements should be verified by the buyer. DO NOT rely on these measurements for transportation purposes.





Lot Nr.

17

Date

16 November 2021

**Detail Information**

Location	<b>Bloemfontein</b>
Year	<b>2021</b>
Manufacturer	<b>Morra</b>
Model	<b>MF 2260 Tolsnyer</b>
Asset Type	<b>Hay &amp; Forage Equipment</b>
Serial Number or VIN	<b>121171</b>
Condition	<b>5 - Very Good</b>
Hours	
Km's	

Comes with Notes	<b>6 tol lusern snyer; Nuut</b>
------------------	---------------------------------

**Operator Station**

Cab Type	
Transmission Detail: Speed	
Transmission Detail: Shift Type	
Differential Lock	
Notes	

**Engine**

Fuel Type	
Manufacturer	
Model	
Notes	

**Rear Options**

Hitch Type	
PTO	
Hydraulic Outlets	
Notes	

**Body Details**

Size	
Type	
Notes	

**Drive Train**

Notes	
-------	--

**Weights**

Front Wheel Weights	
Back Wheel Weights	
Front Nose Weights	
Notes	

**Undercarriage/Suspension**

Tyre Manufacturer	
Front Tyre Size	
Rear Tyre Size	
Notes	

**Accessories**

Other Extensions	
------------------	--

**Functionality Tests**

Start	
Drives Forward	
Drives Backwards	
Brake Pedal Functions	

Functional Test Notes

**Supporting Documents**

Certificate of Registration	
Vehicle Licence Certificate	
Service Record	
Other	



**General**

The Detailed Equipment Information is limited in scope, and BKB Auctioneers has not inspected any aspects or components of the equipment other than those expressly set forth herein. Unless expressly stated, we make no representations or warranties, express or implied, concerning the equipment or its components, including without limitation any representations or warranties concerning functionality, conformity or compliance with any safety standard or requirement of any applicable authority or regulatory body, fitness for any particular purpose, or merchantability. You are strongly advised to perform your own detailed inspection of the equipment prior to bidding.

**Functions**

The Equipment is not tested under load or operated in all available gears. We make no representation or warranty that equipment is operating in accordance with manufacturers' specifications. No inspection has been performed with respect to any functionality aspect other than those expressly included herein. Only select photos have been provided for individual undercarriage components, and may not be indicative of the condition of the entire undercarriage as a whole.

**Dimensions**

Measurements are given as an estimate only. Actual loaded dimensions may vary based on truck/trailer height and the loaded machine configuration/position. It is the buyer's responsibility to measure all loads before leaving our auction site to ensure the load is safe for transport. All measurements should be verified by the buyer. DO NOT rely on these measurements for transportation purposes.



Lot Nr.

18

Date

16 November 2021

**Detail Information**

Location	Trompsburg
Year	1997
Manufacturer	Trailstar
Model	2-As Agterwa
Asset Type	Trailer
Serial Number or VIN	D5B1012965539
Condition	4 - Good
Hours	
Km's	
Comes with	Massa kante 1.7 meter hoog
Notes	Bande baie goed 80% loop vlak



**Operator Station**

Cab Type	
Transmission Detail: Speed	
Transmission Detail: Shift Type	
Differential Lock	
Notes	



**Engine**

Fuel Type	
Manufacturer	
Model	
Notes	

**Rear Options**

Hitch Type	
PTO	
Hydraulic Outlets	
Notes	

**Body Details**

Size	
Type	
Notes	



**Drive Train**

Notes	
-------	--

**Weights**

Front Wheel Weights	
Back Wheel Weights	
Front Nose Weights	
Notes	

**Undercarriage/Suspension**

Tyre Manufacturer	
Front Tyre Size	
Rear Tyre Size	
Notes	

**Accessories**

Other	
Extensions	

**Functionality Tests**

Start	
Drives Forward	
Drives Backwards	
Brake Pedal Functions	

**Supporting Documents**

Certificate of Registration	
Vehicle Licence Certificate	
Service Record	
Other	

Functional Test Notes

**General**

The Detailed Equipment Information is limited in scope, and BKB Auctioneers has not inspected any aspects or components of the equipment other than those expressly set forth herein. Unless expressly stated, we make no representations or warranties, express or implied, concerning the equipment or its components, including without limitation any representations or warranties concerning functionality, conformity or compliance with any safety standard or requirement of any applicable authority or regulatory body, fitness for any particular purpose, or merchantability. You are strongly advised to perform your own detailed inspection of the equipment prior to bidding.

**Functions**

The Equipment is not tested under load or operated in all available gears. We make no representation or warranty that equipment is operating in accordance with manufacturers' specifications. No inspection has been performed with respect to any functionality aspect other than those expressly included herein. Only select photos have been provided for individual undercarriage components, and may not be indicative of the condition of the entire undercarriage as a whole.

**Dimensions**

Measurements are given as an estimate only. Actual loaded dimensions may vary based on truck/trailer height and the loaded machine configuration/position. It is the buyer's responsibility to measure all loads before leaving our auction site to ensure the load is safe for transport. All measurements should be verified by the buyer. DO NOT rely on these measurements for transportation purposes.





Lot Nr.

19

Date

16 November 2021

**Detail Information**

Location	Trompsburg
Year	2019
Manufacturer	Massey Ferguson
Model	1840 Blokkies baler
Asset Type	Hay & Forage Equipment
Serial Number or VIN	TABM18400KYB53399
Condition	5 - Very Good
Hours	
Km's	

Comes with Notes	Baie mooie slegs 3x gewerk (1900 bale gemaak)
------------------	---



**Operator Station**

Cab Type	
Transmission Detail: Speed	
Transmission Detail: Shift Type	
Differential Lock	
Notes	



**Engine**

Fuel Type	
Manufacturer	
Model	
Notes	

**Rear Options**

Hitch Type	
PTO	
Hydraulic Outlets	
Notes	



**Body Details**

Size	
Type	
Notes	

**Drive Train**

Notes	
-------	--

**Weights**

Front Wheel Weights	
Back Wheel Weights	
Front Nose Weights	
Notes	

**Undercarriage/Suspension**

Tyre Manufacturer	
Front Tyre Size	
Rear Tyre Size	
Notes	

**Accessories**

Other Extensions	
------------------	--

**Functionality Tests**

Start	
Drives Forward	
Drives Backwards	
Brake Pedal Functions	

**Supporting Documents**

Certificate of Registration	
Vehicle Licence Certificate	
Service Record	
Other	

Functional Test Notes

**General**

The Detailed Equipment Information is limited in scope, and BKB Auctioneers has not inspected any aspects or components of the equipment other than those expressly set forth herein. Unless expressly stated, we make no representations or warranties, express or implied, concerning the equipment or its components, including without limitation any representations or warranties concerning functionality, conformity or compliance with any safety standard or requirement of any applicable authority or regulatory body, fitness for any particular purpose, or merchantability. You are strongly advised to perform your own detailed inspection of the equipment prior to bidding.

**Functions**

The Equipment is not tested under load or operated in all available gears. We make no representation or warranty that equipment is operating in accordance with manufacturers' specifications. No inspection has been performed with respect to any functionality aspect other than those expressly included herein. Only select photos have been provided for individual undercarriage components, and may not be indicative of the condition of the entire undercarriage as a whole.

**Dimensions**

Measurements are given as an estimate only. Actual loaded dimensions may vary based on truck/trailer height and the loaded machine configuration/position. It is the buyer's responsibility to measure all loads before leaving our auction site to ensure the load is safe for transport. All measurements should be verified by the buyer. DO NOT rely on these measurements for transportation purposes.



Lot Nr.

20

Date

16 November 2021

**Detail Information**

Location	Bloemfontein
Year	
Manufacturer	Malcomes Drotsky
Model	PC24 Hamermeul
Asset Type	Hay & Forage Equipment
Serial Number or VIN	
Condition	3 - Fair
Hours	
Km's	
Comes with	
Notes	In werkende toestand nie nuut gevef nie.

**Operator Station**

Cab Type	
Transmission Detail: Speed	
Transmission Detail: Shift Type	
Differential Lock	
Notes	

**Engine**

Fuel Type	
Manufacturer	
Model	
Notes	

**Rear Options**

Hitch Type	
PTO	
Hydraulic Outlets	
Notes	

**Body Details**

Size	
Type	
Notes	

**Drive Train**

Notes	
-------	--

**Weights**

Front Wheel Weights	
Back Wheel Weights	
Front Nose Weights	
Notes	

**Undercarriage/Suspension**

Tyre Manufacturer	
Front Tyre Size	
Rear Tyre Size	
Notes	

**Accessories**

Other	
Extensions	

**Functionality Tests**

Start	
Drives Forward	
Drives Backwards	
Brake Pedal Functions	

Functional Test Notes

--

**Supporting Documents**

Certificate of Registration	
Vehicle Licence Certificate	
Service Record	
Other	



**General**

The Detailed Equipment Information is limited in scope, and BKB Auctioneers has not inspected any aspects or components of the equipment other than those expressly set forth herein. Unless expressly stated, we make no representations or warranties, express or implied, concerning the equipment or its components, including without limitation any representations or warranties concerning functionality, conformity or compliance with any safety standard or requirement of any applicable authority or regulatory body, fitness for any particular purpose, or merchantability. You are strongly advised to perform your own detailed inspection of the equipment prior to bidding.

**Functions**

The Equipment is not tested under load or operated in all available gears. We make no representation or warranty that equipment is operating in accordance with manufacturers' specifications. No inspection has been performed with respect to any functionality aspect other than those expressly included herein. Only select photos have been provided for individual undercarriage components, and may not be indicative of the condition of the entire undercarriage as a whole.

**Dimensions**

Measurements are given as an estimate only. Actual loaded dimensions may vary based on truck/trailer height and the loaded machine configuration/position. It is the buyer's responsibility to measure all loads before leaving our auction site to ensure the load is safe for transport. All measurements should be verified by the buyer. DO NOT rely on these measurements for transportation purposes.





Lot Nr.

21

Date

16 November 2021

**Detail Information**

Location	Bloemfontein
Year	
Manufacturer	Staalmeester
Model	
Asset Type	Hay & Forage Equipment
Serial Number or VIN	
Condition	3 - Fair
Hours	
Km's	
Comes with	
Notes	Optel Hammermeul; Werkende toestand nuut gerverf



**Operator Station**

Cab Type	
Transmission Detail: Speed	
Transmission Detail: Shift Type	
Differential Lock	
Notes	



**Engine**

Fuel Type	
Manufacturer	
Model	
Notes	

**Rear Options**

Hitch Type	
PTO	
Hydraulic Outlets	
Notes	



**Body Details**

Size	
Type	
Notes	

**Drive Train**

Notes	
-------	--

**Weights**

Front Wheel Weights	
Back Wheel Weights	
Front Nose Weights	
Notes	

**Undercarriage/Suspension**

Tyre Manufacturer	
Front Tyre Size	
Rear Tyre Size	
Notes	



**Accessories**

Other Extensions	
------------------	--

**Functionality Tests**

Start	
Drives Forward	
Drives Backwards	
Brake Pedal Functions	

**Supporting Documents**

Certificate of Registration	
Vehicle Licence Certificate	
Service Record	
Other	

Functional Test Notes

**General**

The Detailed Equipment Information is limited in scope, and BKB Auctioneers has not inspected any aspects or components of the equipment other than those expressly set forth herein. Unless expressly stated, we make no representations or warranties, express or implied, concerning the equipment or its components, including without limitation any representations or warranties concerning functionality, conformity or compliance with any safety standard or requirement of any applicable authority or regulatory body, fitness for any particular purpose, or merchantability. You are strongly advised to perform your own detailed inspection of the equipment prior to

**Functions**

The equipment is not tested under load or operated in all available gears. We make no representation or warranty that equipment is operating in accordance with manufacturers' specifications. No inspection has been performed with respect to any functionality aspect other than those expressly included herein. Only select photos have been provided for individual undercarriage components, and may not be indicative of the condition of the entire undercarriage as a whole.

**Dimensions**

Measurements are given as an estimate only. Actual loaded dimensions may vary based on truck/trailer height and the loaded machine configuration/position. It is the buyer's responsibility to measure all loads before leaving our auction site to ensure the load is safe for transport. All measurements should be verified by the buyer. DO NOT rely on these measurements for transportation purposes.



**Detail Information**

Location	Dewetsdorp
Year	2011
Manufacturer	Volvo
Model	6x4 T/T (480)
Asset Type	
Serial Number or VIN	
Condition	
Hours	
Km's	1 208 747
Comes with	
Notes	Volvo 480 (Groot Lorrie) Net die Perd



**Operator Station**

Cab Type	
Transmission Detail: Speed	
Transmission Detail: Shift Type	
Differential Lock	
Notes	

**Engine**

Fuel Type	
Manufacturer	
Model	
Notes	

**Rear Options**

Hitch Type	
PTO	
Hydraulic Outlets	
Notes	



**Body Details**

Size	
Type	
Notes	

**Drive Train**

Notes	
-------	--

**Weights**

Front Wheel Weights	
Back Wheel Weights	
Front Nose Weights	
Notes	



**Undercarriage/Suspension**

Tyre Manufacturer	
Front Tyre Size	
Rear Tyre Size	
Notes	

**Accessories**

Other	
Extensions	

**Functionality Tests**

Start	
Drives Forward	
Drives Backwards	
Brake Pedal Functions	

**Supporting Documents**

Certificate of Registration	
Vehicle Licence Certificate	
Service Record	
Other	

Functional Test Notes

**General**

The Detailed Equipment Information is limited in scope, and BKB Auctioneers has not inspected any aspects or components of the equipment other than those expressly set forth herein. Unless expressly stated, we make no representations or warranties, express or implied, concerning the equipment or its components, including without limitation any representations or warranties concerning functionality, conformity or compliance with any safety standard or requirement of any applicable authority or regulatory body, fitness for any particular purpose, or merchantability. You are strongly advised to perform your own detailed inspection of

**Functions**

The equipment is not tested under load or operated in all available gears. We make no representation or warranty that equipment is operating in accordance with manufacturers' specifications. No inspection has been performed with respect to any functionality aspect other than those expressly included herein. Only select photos have been provided for individual undercarriage components, and may not be indicative of the condition of the entire undercarriage as a whole.

**Dimensions**

Measurements are given as an estimate only. Actual loaded dimensions may vary based on truck/trailer height and the loaded machine configuration/position. It is the buyer's responsibility to measure all loads before leaving our auction site to ensure the load is safe for transport. All measurements should be verified by the buyer. DO NOT rely on these measurements for transportation purposes.



SCAN ME #21A



Lot Nr.

22

Date

16 November 2021

**Detail Information**

Location	Trompsburg
Year	1998
Manufacturer	MAN
Model	280E Vragmotor
Asset Type	Transportation
Serial Number or VIN	
Condition	3 - Fair
Hours	
Km's	507044

Comes with Notes	Enkel As; Bande nog goed
------------------	--------------------------

**Operator Station**

Cab Type	
Transmission Detail: Speed	
Transmission Detail: Shift Type	
Differential Lock	
Notes	

**Engine**

Fuel Type	
Manufacturer	
Model	
Notes	

**Rear Options**

Hitch Type	
PTO	
Hydraulic Outlets	
Notes	

**Body Details**

Size	
Type	
Notes	

**Drive Train**

Notes	
-------	--

**Weights**

Front Wheel Weights	
Back Wheel Weights	
Front Nose Weights	
Notes	

**Undercarriage/Suspension**

Tyre Manufacturer	
Front Tyre Size	
Rear Tyre Size	
Notes	

**Accessories**

Other Extensions	
------------------	--

**Functionality Tests**

Start	
Drives Forward	
Drives Backwards	
Brake Pedal Functions	

Functional Test Notes



**Supporting Documents**

Certificate of Registration	
Vehicle Licence Certificate	
Service Record	
Other	

**General**

The Detailed Equipment Information is limited in scope, and BKB Auctioneers has not inspected any aspects or components of the equipment other than those expressly set forth herein. Unless expressly stated, we make no representations or warranties, express or implied, concerning the equipment or its components, including without limitation any representations or warranties concerning functionality, conformity or compliance with any safety standard or requirement of any applicable authority or regulatory body, fitness for any particular purpose, or merchantability. You are strongly advised to perform your own detailed inspection of the equipment prior to bidding.

**Functions**

The Equipment is not tested under load or operated in all available gears. We make no representation or warranty that equipment is operating in accordance with manufacturers' specifications. No inspection has been performed with respect to any functionality aspect other than those expressly included herein. Only select photos have been provided for individual undercarriage components, and may not be indicative of the condition of the entire undercarriage as a whole.

**Dimensions**

Measurements are given as an estimate only. Actual loaded dimensions may vary based on truck/trailer height and the loaded machine configuration/position. It is the buyer's responsibility to measure all loads before leaving our auction site to ensure the load is safe for transport. All measurements should be verified by the buyer. DO NOT rely on these measurements for transportation purposes.



Lot Nr.

22A

Date

16 November 2021

## Detail Information

Location	Trompsburg
Year	2017
Manufacturer	Staalmeester
Model	B70 Rondebaler
Asset Type	Hay & Forage Equipment
Serial Number or VIN	R170369
Condition	5 - Very Good
Hours	
Km's	
Comes with	
Notes	Ronde Baler; Nog net 2 hektaar gebaal



## Operator Station

Cab Type	
Transmission Detail: Speed	
Transmission Detail: Shift Type	
Differential Lock	
Notes	



## Engine

Fuel Type	
Manufacturer	
Model	
Notes	

## Rear Options

Hitch Type	
PTO	
Hydraulic Outlets	
Notes	

## Body Details

Size	
Type	
Notes	

## Drive Train

Notes	
-------	--

## Weights

Front Wheel Weights	
Back Wheel Weights	
Front Nose Weights	
Notes	

## Undercarriage/Suspension

Tyre Manufacturer	
Front Tyre Size	
Rear Tyre Size	
Notes	

## Accessories

Other	
Extensions	

## Functionality Tests

Start	
Drives Forward	
Drives Backwards	
Brake Pedal Functions	

Functional Test Notes

## General

The Detailed Equipment Information is limited in scope, and BKB Auctioneers has not inspected any aspects or components of the equipment other than those expressly set forth herein. Unless expressly stated, we make no representations or warranties, express or implied, concerning the equipment or its components, including without limitation any representations or warranties concerning functionality, conformity or compliance with any safety standard or requirement of any applicable authority or regulatory body, fitness for any particular purpose, or merchantability. You are strongly advised to perform your own detailed

## Functions

The Equipment is not tested under load or operated in all available gears. We make no representation or warranty that equipment is operating in accordance with manufacturers' specifications. No inspection has been performed with respect to any functionality aspect other than those expressly included herein. Only select photos have been provided for individual undercarriage components, and may not be indicative of the condition of the entire undercarriage as a whole.

## Dimensions

Measurements are given as an estimate only. Actual loaded dimensions may vary based on truck/trailer height and the loaded machine configuration/position. It is the buyer's responsibility to measure all loads before leaving our auction site to ensure the load is safe for transport. All measurements should be verified by the buyer. DO NOT rely on these measurements for transportation purposes.

## Supporting Documents

Certificate of Registration	
Vehicle Licence Certificate	
Service Record	
Other	



SCAN ME #22A



Lot Nr.

22B

Date

16 November 2021

**Detail Information**

Location	Dewetsdorp
Year	2005
Manufacturer	Toyota
Model	4.2
Asset Type	Transportation
Serial Number or VIN	
Condition	
Hours	
Km's	407000

Comes with	
Notes	Land Cruiser - Bakkie; 4.2 Diesel; Pas gediens en nagegaan

**Operator Station**

Cab Type	Enkel-Kajuit
Transmission Detail: Speed	
Transmission Detail: Shift Type	
Differential Lock	
Notes	

**Engine**

Fuel Type	
Manufacturer	
Model	
Notes	

**Rear Options**

Hitch Type	
PTO	
Hydraulic Outlets	
Notes	

**Body Details**

Size	
Type	
Notes	

**Drive Train**

Notes	
-------	--

**Weights**

Front Wheel Weights	
Back Wheel Weights	
Front Nose Weights	
Notes	

**Undercarriage/Suspension**

Tyre Manufacturer	
Front Tyre Size	
Rear Tyre Size	
Notes	

**Accessories**

Other	
Extensions	

**Functionality Tests**

Start	
Drives Forward	
Drives Backwards	
Brake Pedal Functions	

Functional Test Notes **Dieselpomp injectors en Timing Belt gedoen****Supporting Documents**

Certificate of Registration	
Vehicle Licence Certificate	
Service Record	
Other	

**General**

The Detailed Equipment Information is limited in scope, and BKB Auctioneers has not inspected any aspects or components of the equipment other than those expressly set forth herein. Unless expressly stated, we make no representations or warranties, express or implied, concerning the equipment or its components, including without limitation any representations or warranties concerning functionality, conformity or compliance with any safety standard or requirement of any applicable authority or regulatory body, fitness for any particular purpose, or merchantability. You are strongly advised to perform your own detailed

**Functions**

The Equipment is not tested under load or operated in all available gears. We make no representation or warranty that equipment is operating in accordance with manufacturers' specifications. No inspection has been performed with respect to any functionality aspect other than those expressly included herein. Only select photos have been provided for individual undercarriage components, and may not be indicative of the condition of the entire undercarriage as a whole.

**Dimensions**

Measurements are given as an estimate only. Actual loaded dimensions may vary based on truck/trailer height and the loaded machine configuration/position. It is the buyer's responsibility to measure all loads before leaving our auction site to ensure the load is safe for transport. All measurements should be verified by the buyer. DO NOT rely on these measurements for transportation purposes.



SCAN ME #22B

Lot Nr.

23

Date

16 November 2021

**Detail Information**

Location	Trompsburg
Year	2006
Manufacturer	Grimme
Model	SE 75-20
Asset Type	Harvester
Serial Number or VIN	12200919
Condition	4 - Good
Hours	
Km's	

Comes with Notes	Aartapel uithaler; Enkel ry banker uithaler; Baie mooi
------------------	--



**Operator Station**

Cab Type	
Transmission Detail: Speed	
Transmission Detail: Shift Type	
Differential Lock	
Notes	

**Engine**

Fuel Type	
Manufacturer	
Model	
Notes	

**Rear Options**

Hitch Type	
PTO	
Hydraulic Outlets	
Notes	

**Body Details**

Size	
Type	
Notes	

**Drive Train**

Notes	
-------	--

**Weights**

Front Wheel Weights	
Back Wheel Weights	
Front Nose Weights	
Notes	

**Undercarriage/Suspension**

Tyre Manufacturer	
Front Tyre Size	
Rear Tyre Size	
Notes	

**Accessories**

Other Extensions	
------------------	--

**Functionality Tests**

Start	
Drives Forward	
Drives Backwards	
Brake Pedal Functions	

Functional Test Notes

**Supporting Documents**

Certificate of Registration	
Vehicle Licence Certificate	
Service Record	
Other	



**General**

The Detailed Equipment Information is limited in scope, and BKB Auctioneers has not inspected any aspects or components of the equipment other than those expressly set forth herein. Unless expressly stated, we make no representations or warranties, express or implied, concerning the equipment or its components, including without limitation any representations or warranties concerning functionality, conformity or compliance with any safety standard or requirement of any applicable authority or regulatory body, fitness for any particular purpose, or merchantability. You are strongly advised to perform your own detailed inspection of the equipment prior to bidding.

**Functions**

The Equipment is not tested under load or operated in all available gears. We make no representation or warranty that equipment is operating in accordance with manufacturers' specifications. No inspection has been performed with respect to any functionality aspect other than those expressly included herein. Only select photos have been provided for individual undercarriage components, and may not be indicative of the condition of the entire undercarriage as a whole.

**Dimensions**

Measurements are given as an estimate only. Actual loaded dimensions may vary based on truck/trailer height and the loaded machine configuration/position. It is the buyer's responsibility to measure all loads before leaving our auction site to ensure the load is safe for transport. All measurements should be verified by the buyer. DO NOT rely on these measurements for transportation purposes.





Lot Nr.

24

Date

16 November 2021

**Detail Information**

Location	Bloemfontein
Year	2021
Manufacturer	Maschio Pitagora
Model	Blokkies Baler
Asset Type	Hay & Forage Equipment
Serial Number or VIN	
Condition	5 - Very Good
Hours	
Km's	
Comes with	
Notes	Baler Maschio; Nuut



**Operator Station**

Cab Type	
Transmission Detail: Speed	
Transmission Detail: Shift Type	
Differential Lock	
Notes	



**Engine**

Fuel Type	
Manufacturer	
Model	
Notes	

**Rear Options**

Hitch Type	
PTO	
Hydraulic Outlets	
Notes	



**Body Details**

Size	
Type	
Notes	

**Drive Train**

Notes	
-------	--

**Weights**

Front Wheel Weights	
Back Wheel Weights	
Front Nose Weights	
Notes	

**Undercarriage/Suspension**

Tyre Manufacturer	
Front Tyre Size	
Rear Tyre Size	
Notes	



**Accessories**

Other	
Extensions	

**Functionality Tests**

Start	
Drives Forward	
Drives Backwards	
Brake Pedal Functions	

**Supporting Documents**

Certificate of Registration	
Vehicle Licence Certificate	
Service Record	
Other	

Functional Test Notes

**General**

The Detailed Equipment Information is limited in scope, and BKB Auctioneers has not inspected any aspects or components of the equipment other than those expressly set forth herein. Unless expressly stated, we make no representations or warranties, express or implied, concerning the equipment or its components, including without limitation any representations or warranties concerning functionality, conformity or compliance with any safety standard or requirement of any applicable authority or regulatory body, fitness for any particular purpose, or merchantability. You are strongly advised to perform your own detailed inspection of the equipment prior to bidding.

**Functions**

The Equipment is not tested under load or operated in all available gears. We make no representation or warranty that equipment is operating in accordance with manufacturers' specifications. No inspection has been performed with respect to any functionality aspect other than those expressly included herein. Only select photos have been provided for individual undercarriage components, and may not be indicative of the condition of the entire undercarriage as a whole.

**Dimensions**

Measurements are given as an estimate only. Actual loaded dimensions may vary based on truck/trailer height and the loaded machine configuration/position. It is the buyer's responsibility to measure all loads before leaving our auction site to ensure the load is safe for transport. All measurements should be verified by the buyer. DO NOT rely on these measurements for transportation purposes.



Lot Nr.

25

Date

16 November 2021

**Detail Information**

Location	Humansdorp
Year	
Manufacturer	Connor Shea
Model	Eenrigting skottel ploeg - Series 4
Asset Type	Tractor Attachments
Serial Number or VIN	
Condition	3 - Fair
Hours	
Km's	
Comes with	
Notes	



**Operator Station**

Cab Type	
Transmission Detail: Speed	
Transmission Detail: Shift Type	
Differential Lock	
Notes	

**Engine**

Fuel Type	
Manufacturer	
Model	
Notes	

**Rear Options**

Hitch Type	
PTO	
Hydraulic Outlets	
Notes	

**Body Details**

Size	
Type	
Notes	

**Drive Train**

Notes	
-------	--

**Weights**

Front Wheel Weights	
Back Wheel Weights	
Front Nose Weights	
Notes	

**Undercarriage/Suspension**

Tyre Manufacturer	
Front Tyre Size	
Rear Tyre Size	
Notes	

**Accessories**

Other Extensions	
------------------	--

**Functionality Tests**

Start	
Drives Forward	
Drives Backwards	
Brake Pedal Functions	

**Supporting Documents**

Certificate of Registration	
Vehicle Licence Certificate	
Service Record	
Other	

Functional Test Notes

**General**

The Detailed Equipment Information is limited in scope, and BKB Auctioneers has not inspected any aspects or components of the equipment other than those expressly set forth herein. Unless expressly stated, we make no representations or warranties, express or implied, concerning the equipment or its components, including without limitation any representations or warranties concerning functionality, conformity or compliance with any safety standard or requirement of any applicable authority or regulatory body, fitness for any particular purpose, or merchantability. You are strongly advised to perform your own detailed inspection of the equipment prior to bidding.

**Functions**

The Equipment is not tested under load or operated in all available gears. We make no representation or warranty that equipment is operating in accordance with manufacturers' specifications. No inspection has been performed with respect to any functionality aspect other than those expressly included herein. Only select photos have been provided for individual undercarriage components, and may not be indicative of the condition of the entire undercarriage as a whole.

**Dimensions**

Measurements are given as an estimate only. Actual loaded dimensions may vary based on truck/trailer height and the loaded machine configuration/position. It is the buyer's responsibility to measure all loads before leaving our auction site to ensure the load is safe for transport. All measurements should be verified by the buyer. DO NOT rely on these measurements for transportation purposes.





Lot Nr.

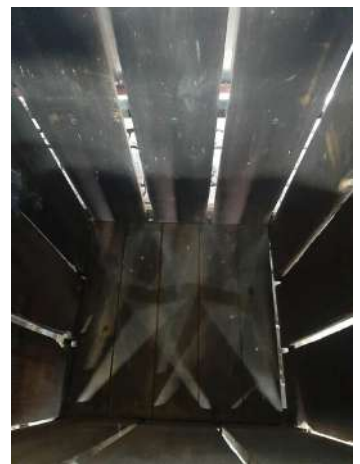
26

Date

16 November 2021

**Detail Information**

Location	Reddersburg
Year	
Manufacturer	
Model	
Asset Type	Livestock Handling Equipment
Serial Number or VIN	
Condition	4 - Good
Hours	
Km's	
Comes with	
Notes	Hout wolpres (Dubbel-baal, hand gedrewe)



**Operator Station**

Cab Type	
Transmission Detail: Speed	
Transmission Detail: Shift Type	
Differential Lock	
Notes	

**Engine**

Fuel Type	
Manufacturer	
Model	
Notes	

**Rear Options**

Hitch Type	
PTO	
Hydraulic Outlets	
Notes	

**Body Details**

Size	
Type	
Notes	

**Drive Train**

Notes	
-------	--

**Weights**

Front Wheel Weights	
Back Wheel Weights	
Front Nose Weights	
Notes	

**Undercarriage/Suspension**

Tyre Manufacturer	
Front Tyre Size	
Rear Tyre Size	
Notes	

**Accessories**

Other Extensions	
------------------	--

**Functionality Tests**

Start	
Drives Forward	
Drives Backwards	
Brake Pedal Functions	

**Supporting Documents**

Certificate of Registration	
Vehicle Licence Certificate	
Service Record	
Other	

Functional Test Notes	
-----------------------	--

**General**

The Detailed Equipment Information is limited in scope, and BKB Auctioneers has not inspected any aspects or components of the equipment other than those expressly set forth herein. Unless expressly stated, we make no representations or warranties, express or implied, concerning the equipment or its components, including without limitation any representations or warranties concerning functionality, conformity or compliance with any safety standard or requirement of any applicable authority or regulatory body, fitness for any particular purpose, or merchantability. You are strongly advised to perform your own detailed inspection of the equipment prior to bidding.

**Functions**

The Equipment is not tested under load or operated in all available gears. We make no representation or warranty that equipment is operating in accordance with manufacturers' specifications. No inspection has been performed with respect to any functionality aspect other than those expressly included herein. Only select photos have been provided for individual undercarriage components, and may not be indicative of the condition of the entire undercarriage as a whole.

**Dimensions**

Measurements are given as an estimate only. Actual loaded dimensions may vary based on truck/trailer height and the loaded machine configuration/position. It is the buyer's responsibility to measure all loads before leaving our auction site to ensure the load is safe for transport. All measurements should be verified by the buyer. DO NOT rely on these measurements for transportation purposes.



Lot Nr.

27

Date

16 November 2021

**Detail Information**

Location	<b>Cradock</b>
Year	
Manufacturer	
Model	
Asset Type	<b>Livestock Handling Equipment</b>
Serial Number or VIN	
Condition	<b>5 - Very Good</b>
Hours	
Km's	
Comes with	
Notes	<b>Kleinvee hanteringstoerusting</b>



**Operator Station**

Cab Type	
Transmission Detail: Speed	
Transmission Detail: Shift Type	
Differential Lock	
Notes	

**Engine**

Fuel Type	
Manufacturer	
Model	
Notes	

**Rear Options**

Hitch Type	
PTO	
Hydraulic Outlets	
Notes	

**Body Details**

Size	
Type	
Notes	<b>Hoogte: 118cm, Lengte: 148cm &amp; Breedte: 80cm</b>



**Drive Train**

Notes	
-------	--

**Weights**

Front Wheel Weights	
Back Wheel Weights	
Front Nose Weights	
Notes	

**Undercarriage/Suspension**

Tyre Manufacturer	
Front Tyre Size	
Rear Tyre Size	
Notes	

**Accessories**

Other	
Extensions	

**Functionality Tests**

Start	
Drives Forward	
Drives Backwards	
Brake Pedal Functions	

Functional Test Notes	
-----------------------	--

**Supporting Documents**

Certificate of Registration	
Vehicle Licence Certificate	
Service Record	
Other	

**General**

The Detailed Equipment Information is limited in scope, and BKB Auctioneers has not inspected any aspects or components of the equipment other than those expressly set forth herein. Unless expressly stated, we make no representations or warranties, express or implied, concerning the equipment or its components, including without limitation any representations or warranties concerning functionality, conformity or compliance with any safety standard or requirement of any applicable authority or regulatory body, fitness for any particular purpose, or merchantability. You are strongly advised to perform your own detailed inspection of the equipment prior to bidding.

**Functions**

The Equipment is not tested under load or operated in all available gears. We make no representation or warranty that equipment is operating in accordance with manufacturers' specifications. No inspection has been performed with respect to any functionality aspect other than those expressly included herein. Only select photos have been provided for individual undercarriage components, and may not be indicative of the condition of the entire undercarriage as a whole.

**Dimensions**

Measurements are given as an estimate only. Actual loaded dimensions may vary based on truck/trailer height and the loaded machine configuration/position. It is the buyer's responsibility to measure all loads before leaving our auction site to ensure the load is safe for transport. All measurements should be verified by the buyer. DO NOT rely on these measurements for transportation purposes.





Lot Nr.

28

Date

16 November 2021

**Detail Information**

Location	<b>Cradock</b>
Year	
Manufacturer	<b>John Deere</b>
Model	<b>5 tand ripper</b>
Asset Type	<b>Seeding and Tillage Equipment</b>
Serial Number or VIN	
Condition	<b>5 - Very Good</b>
Hours	
Km's	
Comes with	<b>Baie goeie toestand; Shanks nog goed; Nuwe skoene; Trekker te klein vir ripper</b>
Notes	



**Operator Station**

Cab Type	
Transmission Detail: Speed	
Transmission Detail: Shift Type	
Differential Lock	
Notes	

**Engine**

Fuel Type	
Manufacturer	
Model	
Notes	

**Rear Options**

Hitch Type	
PTO	
Hydraulic Outlets	
Notes	

**Body Details**

Size	
Type	
Notes	

**Drive Train**

Notes	
-------	--

**Weights**

Front Wheel Weights	
Back Wheel Weights	
Front Nose Weights	
Notes	

**Undercarriage/Suspension**

Tyre Manufacturer	
Front Tyre Size	
Rear Tyre Size	
Notes	

**Accessories**

Other Extensions	
------------------	--

**Functionality Tests**

Start	
Drives Forward	
Drives Backwards	
Brake Pedal Functions	

Functional Test Notes

**Supporting Documents**

Certificate of Registration	
Vehicle Licence Certificate	
Service Record	
Other	



**General**

The Detailed Equipment Information is limited in scope, and BKB Auctioneers has not inspected any aspects or components of the equipment other than those expressly set forth herein. Unless expressly stated, we make no representations or warranties, express or implied, concerning the equipment or its components, including without limitation any representations or warranties concerning functionality, conformity or compliance with any safety standard or requirement of any applicable authority or regulatory body, fitness for any particular purpose, or merchantability. You are strongly advised to perform your own detailed inspection of the equipment prior to bidding.

**Functions**

The Equipment is not tested under load or operated in all available gears. We make no representation or warranty that equipment is operating in accordance with manufacturers' specifications. No inspection has been performed with respect to any functionality aspect other than those expressly included herein. Only select photos have been provided for individual undercarriage components, and may not be indicative of the condition of the entire undercarriage as a whole.

**Dimensions**

Measurements are given as an estimate only. Actual loaded dimensions may vary based on truck/trailer height and the loaded machine configuration/position. It is the buyer's responsibility to measure all loads before leaving our auction site to ensure the load is safe for transport. All measurements should be verified by the buyer. DO NOT rely on these measurements for transportation purposes.



Lot Nr.

29

Date

16 November 2021

**Detail Information**

Location	Cradock
Year	
Manufacturer	John Deere
Model	Grondbreker
Asset Type	Seeding and Tillage Equipment
Serial Number or VIN	
Condition	4 - Good
Hours	
Km's	

Comes with **1 - Tine ripper with new tip; Ripper on toolbar**

Notes

**Operator Station**

Cab Type	
Transmission Detail: Speed	
Transmission Detail: Shift Type	
Differential Lock	
Notes	

**Engine**

Fuel Type	
Manufacturer	
Model	
Notes	

**Rear Options**

Hitch Type	
PTO	
Hydraulic Outlets	
Notes	

**Body Details**

Size	
Type	
Notes	

**Drive Train**

Notes

**Weights**

Front Wheel Weights	
Back Wheel Weights	
Front Nose Weights	
Notes	

**Undercarriage/Suspension**

Tyre Manufacturer	
Front Tyre Size	
Rear Tyre Size	
Notes	

**Accessories**

Other Extensions

**Functionality Tests**

Start	
Drives Forward	
Drives Backwards	
Brake Pedal Functions	

Functional Test Notes



**Supporting Documents**

Certificate of Registration	
Vehicle Licence Certificate	
Service Record	
Other	

**General**

The Detailed Equipment Information is limited in scope, and BKB Auctioneers has not inspected any aspects or components of the equipment other than those expressly set forth herein. Unless expressly stated, we make no representations or warranties, express or implied, concerning the equipment or its components, including without limitation any representations or warranties concerning functionality, conformity or compliance with any safety standard or requirement of any applicable authority or regulatory body, fitness for any particular purpose, or merchantability. You are strongly advised to perform your own detailed inspection of the equipment prior to bidding.

**Functions**

The Equipment is not tested under load or operated in all available gears. We make no representation or warranty that equipment is operating in accordance with manufacturers' specifications. No inspection has been performed with respect to any functionality aspect other than those expressly included herein. Only select photos have been provided for individual undercarriage components, and may not be indicative of the condition of the entire undercarriage as a whole.

**Dimensions**

Measurements are given as an estimate only. Actual loaded dimensions may vary based on truck/trailer height and the loaded machine configuration/position. It is the buyer's responsibility to measure all loads before leaving our auction site to ensure the load is safe for transport. All measurements should be verified by the buyer. DO NOT rely on these measurements for transportation purposes.





Lot Nr.

30

Date

16 November 2021

**Detail Information**

Location	Cradock
Year	
Manufacturer	BP Implements
Model	OF 18
Asset Type	Seeding and Tillage Equipment
Serial Number or VIN	
Condition	4 - Good
Hours	
Km's	

Comes with	Bearing checks; 18-disc's (9x9) 3 point
Notes	Offset Disc; 3 Point Heavy Duty; Width 2.09m; 580 kg need 55W

**Operator Station**

Cab Type	
Transmission Detail: Speed	
Transmission Detail: Shift Type	
Differential Lock	
Notes	

**Engine**

Fuel Type	
Manufacturer	
Model	
Notes	

**Rear Options**

Hitch Type	
PTO	
Hydraulic Outlets	
Notes	

**Body Details**

Size	
Type	
Notes	

**Drive Train**

Notes	
-------	--

**Weights**

Front Wheel Weights	
Back Wheel Weights	
Front Nose Weights	
Notes	

**Undercarriage/Suspension**

Tyre Manufacturer	
Front Tyre Size	
Rear Tyre Size	
Notes	

**Accessories**

Other	
Extensions	

**Functionality Tests**

Start	
Drives Forward	
Drives Backwards	
Brake Pedal Functions	

Functional Test Notes

**Supporting Documents**

Certificate of Registration	
Vehicle Licence Certificate	
Service Record	
Other	



**General**

The Detailed Equipment Information is limited in scope, and BKB Auctioneers has not inspected any aspects or components of the equipment other than those expressly set forth herein. Unless expressly stated, we make no representations or warranties, express or implied, concerning the equipment or its components, including without limitation any representations or warranties concerning functionality, conformity or compliance with any safety standard or requirement of any applicable authority or regulatory body, fitness for any particular purpose, or merchantability. You are strongly advised to perform your own detailed inspection of the equipment prior to bidding.

**Functions**

The Equipment is not tested under load or operated in all available gears. We make no representation or warranty that equipment is operating in accordance with manufacturers' specifications. No inspection has been performed with respect to any functionality aspect other than those expressly included herein. Only select photos have been provided for individual undercarriage components, and may not be indicative of the condition of the entire undercarriage as a whole.

**Dimensions**

Measurements are given as an estimate only. Actual loaded dimensions may vary based on truck/trailer height and the loaded machine configuration/position. It is the buyer's responsibility to measure all loads before leaving our auction site to ensure the load is safe for transport. All measurements should be verified by the buyer. DO NOT rely on these measurements for transportation purposes.



Lot Nr.

31

Date

16 November 2021

**Detail Information**

Location	Cradock
Year	
Manufacturer	SAFIM
Model	512
Asset Type	Seeding and Tillage Equipment
Serial Number or VIN	
Condition	5 - Very Good
Hours	
Km's	
Comes with	5 - Tine ripper; new shoes and tips
Notes	Refurbished



**Operator Station**

Cab Type	
Transmission Detail: Speed	
Transmission Detail: Shift Type	
Differential Lock	
Notes	

**Engine**

Fuel Type	
Manufacturer	
Model	
Notes	

**Rear Options**

Hitch Type	
PTO	
Hydraulic Outlets	
Notes	

**Body Details**

Size	
Type	
Notes	

**Drive Train**

Notes	
-------	--

**Weights**

Front Wheel Weights	
Back Wheel Weights	
Front Nose Weights	
Notes	

**Undercarriage/Suspension**

Tyre Manufacturer	
Front Tyre Size	
Rear Tyre Size	
Notes	

**Accessories**

Other	
Extensions	

**Functionality Tests**

Start	
Drives Forward	
Drives Backwards	
Brake Pedal Functions	

Functional Test Notes

**Supporting Documents**

Certificate of Registration	
Vehicle Licence Certificate	
Service Record	
Other	

**General**

The Detailed Equipment Information is limited in scope, and BKB Auctioneers has not inspected any aspects or components of the equipment other than those expressly set forth herein. Unless expressly stated, we make no representations or warranties, express or implied, concerning the equipment or its components, including without limitation any representations or warranties concerning functionality, conformity or compliance with any safety standard or requirement of any applicable authority or regulatory body, fitness for any particular purpose, or merchantability. You are strongly advised to perform your own detailed inspection of the equipment prior to bidding.

**Functions**

The Equipment is not tested under load or operated in all available gears. We make no representation or warranty that equipment is operating in accordance with manufacturers' specifications. No inspection has been performed with respect to any functionality aspect other than those expressly included herein. Only select photos have been provided for individual undercarriage components, and may not be indicative of the condition of the entire undercarriage as a whole.

**Dimensions**

Measurements are given as an estimate only. Actual loaded dimensions may vary based on truck/trailer height and the loaded machine configuration/position. It is the buyer's responsibility to measure all loads before leaving our auction site to ensure the load is safe for transport. All measurements should be verified by the buyer. DO NOT rely on these measurements for transportation purposes.





Lot Nr.

32

Date

16 November 2021

**Detail Information**

Location	Cradock
Year	
Manufacturer	SAFIM
Model	512
Asset Type	Seeding and Tillage Equipment
Serial Number or VIN	
Condition	5 - Very Good
Hours	
Km's	
Comes with	5 - Tine ripper; new shoes and tips
Notes	Refurbished



**Operator Station**

Cab Type	
Transmission Detail: Speed	
Transmission Detail: Shift Type	
Differential Lock	
Notes	

**Engine**

Fuel Type	
Manufacturer	
Model	
Notes	

**Rear Options**

Hitch Type	
PTO	
Hydraulic Outlets	
Notes	



**Body Details**

Size	
Type	
Notes	

**Drive Train**

Notes	
-------	--

**Weights**

Front Wheel Weights	
Back Wheel Weights	
Front Nose Weights	
Notes	

**Undercarriage/Suspension**

Tyre Manufacturer	
Front Tyre Size	
Rear Tyre Size	
Notes	



**Accessories**

Other	
Extensions	

**Functionality Tests**

Start	
Drives Forward	
Drives Backwards	
Brake Pedal Functions	

**Supporting Documents**

Certificate of Registration	
Vehicle Licence Certificate	
Service Record	
Other	

Functional Test Notes

**General**

The Detailed Equipment Information is limited in scope, and BKB Auctioneers has not inspected any aspects or components of the equipment other than those expressly set forth herein. Unless expressly stated, we make no representations or warranties, express or implied, concerning the equipment or its components, including without limitation any representations or warranties concerning functionality, conformity or compliance with any safety standard or requirement of any applicable authority or regulatory body, fitness for any particular purpose, or merchantability. You are strongly advised to perform your own detailed inspection of the equipment prior to bidding.

**Functions**

The Equipment is not tested under load or operated in all available gears. We make no representation or warranty that equipment is operating in accordance with manufacturers' specifications. No inspection has been performed with respect to any functionality aspect other than those expressly included herein. Only select photos have been provided for individual undercarriage components, and may not be indicative of the condition of the entire undercarriage as a whole.

**Dimensions**

Measurements are given as an estimate only. Actual loaded dimensions may vary based on truck/trailer height and the loaded machine configuration/position. It is the buyer's responsibility to measure all loads before leaving our auction site to ensure the load is safe for transport. All measurements should be verified by the buyer. DO NOT rely on these measurements for transportation purposes.



Lot Nr.

33

Date

16 November 2021

**Detail Information**

Location	Cradock
Year	
Manufacturer	Rovic Lime
Model	PTO Model
Asset Type	Other Agri Equipment
Serial Number or VIN	
Condition	4 - Good
Hours	
Km's	
Comes with	PTO-Model; belt and bucket good
Notes	5 ton capacity; refurbished

**Operator Station**

Cab Type	
Transmission Detail: Speed	
Transmission Detail: Shift Type	
Differential Lock	
Notes	

**Engine**

Fuel Type	
Manufacturer	
Model	
Notes	

**Rear Options**

Hitch Type	
PTO	
Hydraulic Outlets	
Notes	

**Body Details**

Size	
Type	
Notes	

**Drive Train**

Notes	
-------	--

**Weights**

Front Wheel Weights	
Back Wheel Weights	
Front Nose Weights	
Notes	

**Undercarriage/Suspension**

Tyre Manufacturer	
Front Tyre Size	
Rear Tyre Size	
Notes	

**Accessories**

Other	
Extensions	

**Functionality Tests**

Start	
Drives Forward	
Drives Backwards	
Brake Pedal Functions	

Functional Test Notes



**Supporting Documents**

Certificate of Registration	
Vehicle Licence Certificate	
Service Record	
Other	

**General**

The Detailed Equipment Information is limited in scope, and BKB Auctioneers has not inspected any aspects or components of the equipment other than those expressly set forth herein. Unless expressly stated, we make no representations or warranties, express or implied, concerning the equipment or its components, including without limitation any representations or warranties concerning functionality, conformity or compliance with any safety standard or requirement of any applicable authority or regulatory body, fitness for any particular purpose, or merchantability. You are strongly advised to perform your own detailed inspection of the equipment prior to bidding.

**Functions**

The Equipment is not tested under load or operated in all available gears. We make no representation or warranty that equipment is operating in accordance with manufacturers' specifications. No inspection has been performed with respect to any functionality aspect other than those expressly included herein. Only select photos have been provided for individual undercarriage components, and may not be indicative of the condition of the entire undercarriage as a whole.

**Dimensions**

Measurements are given as an estimate only. Actual loaded dimensions may vary based on truck/trailer height and the loaded machine configuration/position. It is the buyer's responsibility to measure all loads before leaving our auction site to ensure the load is safe for transport. All measurements should be verified by the buyer. DO NOT rely on these measurements for transportation purposes.





Lot Nr.

34

Date

16 November 2021

**Detail Information**

Location	Cradock
Year	
Manufacturer	
Model	5 Tine Ghrop
Asset Type	Seeding and Tillage Equipment
Serial Number or VIN	
Condition	4 - Good
Hours	
Km's	
Comes with	Aggressive implement with heavy duty roller; strongly build tine implement
Notes	



**Operator Station**

Cab Type	
Transmission Detail: Speed	
Transmission Detail: Shift Type	
Differential Lock	
Notes	



**Engine**

Fuel Type	
Manufacturer	
Model	
Notes	

**Rear Options**

Hitch Type	
PTO	
Hydraulic Outlets	
Notes	

**Body Details**

Size	
Type	
Notes	

**Drive Train**

Notes	
-------	--

**Weights**

Front Wheel Weights	
Back Wheel Weights	
Front Nose Weights	
Notes	

**Undercarriage/Suspension**

Tyre Manufacturer	
Front Tyre Size	
Rear Tyre Size	
Notes	

**Accessories**

Other	
Extensions	



**Functionality Tests**

Start	
Drives Forward	
Drives Backwards	
Brake Pedal Functions	

Functional Test Notes

**Supporting Documents**

Certificate of Registration	
Vehicle Licence Certificate	
Service Record	
Other	

**General**

The Detailed Equipment Information is limited in scope, and BKB Auctioneers has not inspected any aspects or components of the equipment other than those expressly set forth herein. Unless expressly stated, we make no representations or warranties, express or implied, concerning the equipment or its components, including without limitation any representations or warranties concerning functionality, conformity or compliance with any safety standard or requirement of any applicable authority or regulatory body, fitness for any particular purpose, or merchantability. You are strongly advised to perform your own detailed inspection of the equipment prior to bidding.

**Functions**

The Equipment is not tested under load or operated in all available gears. We make no representation or warranty that equipment is operating in accordance with manufacturers' specifications. No inspection has been performed with respect to any functionality aspect other than those expressly included herein. Only select photos have been provided for individual undercarriage components, and may not be indicative of the condition of the entire undercarriage as a whole.

**Dimensions**

Measurements are given as an estimate only. Actual loaded dimensions may vary based on truck/trailer height and the loaded machine configuration/position. It is the buyer's responsibility to measure all loads before leaving our auction site to ensure the load is safe for transport. All measurements should be verified by the buyer. DO NOT rely on these measurements for transportation purposes.



Lot Nr.

35

Date

16 November 2021

**Detail Information**

Location	Cradock
Year	
Manufacturer	BP Implements
Model	
Asset Type	Seeding and Tillage Equipment
Serial Number or VIN	
Condition	4 - Good
Hours	
Km's	
Comes with	Seedbed roller
Notes	Vibroflex 9 - tine & roller; Aggressive tillage implement



**Operator Station**

Cab Type	
Transmission Detail: Speed	
Transmission Detail: Shift Type	
Differential Lock	
Notes	

**Engine**

Fuel Type	
Manufacturer	
Model	
Notes	

**Rear Options**

Hitch Type	
PTO	
Hydraulic Outlets	
Notes	



**Body Details**

Size	
Type	
Notes	

**Drive Train**

Notes	
-------	--

**Weights**

Front Wheel Weights	
Back Wheel Weights	
Front Nose Weights	
Notes	

**Undercarriage/Suspension**

Tyre Manufacturer	
Front Tyre Size	
Rear Tyre Size	
Notes	



**Accessories**

Other Extensions	
------------------	--

**Functionality Tests**

Start	
Drives Forward	
Drives Backwards	
Brake Pedal Functions	

Functional Test Notes

**Supporting Documents**

Certificate of Registration	
Vehicle Licence Certificate	
Service Record	
Other	

**General**

The Detailed Equipment Information is limited in scope, and BKB Auctioneers has not inspected any aspects or components of the equipment other than those expressly set forth herein. Unless expressly stated, we make no representations or warranties, express or implied, concerning the equipment or its components, including without limitation any representations or warranties concerning functionality, conformity or compliance with any safety standard or requirement of any applicable authority or regulatory body, fitness for any particular purpose, or merchantability. You are strongly advised to perform your own detailed inspection of the equipment prior to bidding.

**Functions**

The Equipment is not tested under load or operated in all available gears. We make no representation or warranty that equipment is operating in accordance with manufacturers' specifications. No inspection has been performed with respect to any functionality aspect other than those expressly included herein. Only select photos have been provided for individual undercarriage components, and may not be indicative of the condition of the entire undercarriage as a whole.

**Dimensions**

Measurements are given as an estimate only. Actual loaded dimensions may vary based on truck/trailer height and the loaded machine configuration/position. It is the buyer's responsibility to measure all loads before leaving our auction site to ensure the load is safe for transport. All measurements should be verified by the buyer. DO NOT rely on these measurements for transportation purposes.





Lot Nr.

36

Date

16 November 2021

**Detail Information**

Location	Cradock
Year	
Manufacturer	SA Wonder
Model	5 Tand Ploeg
Asset Type	Seeding and Tillage Equipment
Serial Number or VIN	
Condition	5 - Very Good
Hours	
Km's	
Comes with	
Notes	Nuut oorgedoen



**Operator Station**

Cab Type	
Transmission Detail: Speed	
Transmission Detail: Shift Type	
Differential Lock	
Notes	

**Engine**

Fuel Type	
Manufacturer	
Model	
Notes	

**Rear Options**

Hitch Type	
PTO	
Hydraulic Outlets	
Notes	

**Body Details**

Size	
Type	
Notes	

**Drive Train**

Notes	
-------	--

**Weights**

Front Wheel Weights	
Back Wheel Weights	
Front Nose Weights	
Notes	

**Undercarriage/Suspension**

Tyre Manufacturer	
Front Tyre Size	
Rear Tyre Size	
Notes	

**Accessories**

Other Extensions	
------------------	--

**Functionality Tests**

Start	
Drives Forward	
Drives Backwards	
Brake Pedal Functions	

**Supporting Documents**

Certificate of Registration	
Vehicle Licence Certificate	
Service Record	
Other	

Functional Test Notes

**General**

The Detailed Equipment Information is limited in scope, and BKB Auctioneers has not inspected any aspects or components of the equipment other than those expressly set forth herein. Unless expressly stated, we make no representations or warranties, express or implied, concerning the equipment or its components, including without limitation any representations or warranties concerning functionality, conformity or compliance with any safety standard or requirement of any applicable authority or regulatory body, fitness for any particular purpose, or merchantability. You are strongly advised to perform your own detailed inspection of the equipment prior to bidding.

**Functions**

The Equipment is not tested under load or operated in all available gears. We make no representation or warranty that equipment is operating in accordance with manufacturers' specifications. No inspection has been performed with respect to any functionality aspect other than those expressly included herein. Only select photos have been provided for individual undercarriage components, and may not be indicative of the condition of the entire undercarriage as a whole.

**Dimensions**

Measurements are given as an estimate only. Actual loaded dimensions may vary based on truck/trailer height and the loaded machine configuration/position. It is the buyer's responsibility to measure all loads before leaving our auction site to ensure the load is safe for transport. All measurements should be verified by the buyer. DO NOT rely on these measurements for transportation purposes.



Lot Nr.

37

Date

16 November 2021

**Detail Information**

Location	Cradock
Year	
Manufacturer	Sitrex
Model	Rolhark
Asset Type	Seeding and Tillage Equipment
Serial Number or VIN	
Condition	5 - Very Good
Hours	
Km's	
Comes with	
Notes	5-tol



**Operator Station**

Cab Type	
Transmission Detail: Speed	
Transmission Detail: Shift Type	
Differential Lock	
Notes	

**Engine**

Fuel Type	
Manufacturer	
Model	
Notes	

**Rear Options**

Hitch Type	
PTO	
Hydraulic Outlets	
Notes	



**Body Details**

Size	
Type	
Notes	

**Drive Train**

Notes	
-------	--

**Weights**

Front Wheel Weights	
Back Wheel Weights	
Front Nose Weights	
Notes	

**Undercarriage/Suspension**

Tyre Manufacturer	
Front Tyre Size	
Rear Tyre Size	
Notes	

**Accessories**

Other Extensions	
------------------	--

**Functionality Tests**

Start	
Drives Forward	
Drives Backwards	
Brake Pedal Functions	

**Supporting Documents**

Certificate of Registration	
Vehicle Licence Certificate	
Service Record	
Other	

Functional Test Notes

**General**

The Detailed Equipment Information is limited in scope, and BKB Auctioneers has not inspected any aspects or components of the equipment other than those expressly set forth herein. Unless expressly stated, we make no representations or warranties, express or implied, concerning the equipment or its components, including without limitation any representations or warranties concerning functionality, conformity or compliance with any safety standard or requirement of any applicable authority or regulatory body, fitness for any particular purpose, or merchantability. You are strongly advised to perform your own detailed inspection of the equipment prior to bidding.

**Functions**

The Equipment is not tested under load or operated in all available gears. We make no representation or warranty that equipment is operating in accordance with manufacturers' specifications. No inspection has been performed with respect to any functionality aspect other than those expressly included herein. Only select photos have been provided for individual undercarriage components, and may not be indicative of the condition of the entire undercarriage as a whole.

**Dimensions**

Measurements are given as an estimate only. Actual loaded dimensions may vary based on truck/trailer height and the loaded machine configuration/position. It is the buyer's responsibility to measure all loads before leaving our auction site to ensure the load is safe for transport. All measurements should be verified by the buyer. DO NOT rely on these measurements for transportation purposes.





Lot Nr.

38

Date

16 November 2021

**Detail Information**

Location	Cradock
Year	
Manufacturer	SA Wonder
Model	
Asset Type	Seeding and Tillage Equipment
Serial Number or VIN	
Condition	4 - Good
Hours	
Km's	
Comes with	9 point; 9 tines tiller (cultivator)
Notes	SA Wonder market by Ford



**Operator Station**

Cab Type	
Transmission Detail: Speed	
Transmission Detail: Shift Type	
Differential Lock	
Notes	

**Engine**

Fuel Type	
Manufacturer	
Model	
Notes	

**Rear Options**

Hitch Type	
PTO	
Hydraulic Outlets	
Notes	



**Body Details**

Size	
Type	
Notes	

**Drive Train**

Notes	
-------	--

**Weights**

Front Wheel Weights	
Back Wheel Weights	
Front Nose Weights	
Notes	

**Undercarriage/Suspension**

Tyre Manufacturer	
Front Tyre Size	
Rear Tyre Size	
Notes	

**Accessories**

Other Extensions	
------------------	--

**Functionality Tests**

Start	
Drives Forward	
Drives Backwards	
Brake Pedal Functions	

**Supporting Documents**

Certificate of Registration	
Vehicle Licence Certificate	
Service Record	
Other	

Functional Test Notes

**General**

The Detailed Equipment Information is limited in scope, and BKB Auctioneers has not inspected any aspects or components of the equipment other than those expressly set forth herein. Unless expressly stated, we make no representations or warranties, express or implied, concerning the equipment or its components, including without limitation any representations or warranties concerning functionality, conformity or compliance with any safety standard or requirement of any applicable authority or regulatory body, fitness for any particular purpose, or merchantability. You are strongly advised to perform your own detailed inspection of the equipment prior to bidding.

**Functions**

The Equipment is not tested under load or operated in all available gears. We make no representation or warranty that equipment is operating in accordance with manufacturers' specifications. No inspection has been performed with respect to any functionality aspect other than those expressly included herein. Only select photos have been provided for individual undercarriage components, and may not be indicative of the condition of the entire undercarriage as a whole.

**Dimensions**

Measurements are given as an estimate only. Actual loaded dimensions may vary based on truck/trailer height and the loaded machine configuration/position. It is the buyer's responsibility to measure all loads before leaving our auction site to ensure the load is safe for transport. All measurements should be verified by the buyer. DO NOT rely on these measurements for transportation purposes.



Lot Nr.

39

Date

16 November 2021

**Detail Information**

Location	Cradock
Year	
Manufacturer	Soilmaster
Model	Tiller
Asset Type	Seeding and Tillage Equipment
Serial Number or VIN	
Condition	5 - Very Good
Hours	
Km's	
Comes with	
Notes	4 tand; nuut oorgedoen



**Operator Station**

Cab Type	
Transmission Detail: Speed	
Transmission Detail: Shift Type	
Differential Lock	
Notes	

**Engine**

Fuel Type	
Manufacturer	
Model	
Notes	

**Rear Options**

Hitch Type	
PTO	
Hydraulic Outlets	
Notes	

**Body Details**

Size	
Type	
Notes	

**Drive Train**

Notes	
-------	--

**Weights**

Front Wheel Weights	
Back Wheel Weights	
Front Nose Weights	
Notes	

**Undercarriage/Suspension**

Tyre Manufacturer	
Front Tyre Size	
Rear Tyre Size	
Notes	

**Accessories**

Other Extensions	
------------------	--

**Functionality Tests**

Start	
Drives Forward	
Drives Backwards	
Brake Pedal Functions	

Functional Test Notes

**Supporting Documents**

Certificate of Registration	
Vehicle Licence Certificate	
Service Record	
Other	

**General**

The Detailed Equipment Information is limited in scope, and BKB Auctioneers has not inspected any aspects or components of the equipment other than those expressly set forth herein. Unless expressly stated, we make no representations or warranties, express or implied, concerning the equipment or its components, including without limitation any representations or warranties concerning functionality, conformity or compliance with any safety standard or requirement of any applicable authority or regulatory body, fitness for any particular purpose, or merchantability. You are strongly advised to perform your own detailed inspection of the equipment prior to bidding.

**Functions**

The Equipment is not tested under load or operated in all available gears. We make no representation or warranty that equipment is operating in accordance with manufacturers' specifications. No inspection has been performed with respect to any functionality aspect other than those expressly included herein. Only select photos have been provided for individual undercarriage components, and may not be indicative of the condition of the entire undercarriage as a whole.

**Dimensions**

Measurements are given as an estimate only. Actual loaded dimensions may vary based on truck/trailer height and the loaded machine configuration/position. It is the buyer's responsibility to measure all loads before leaving our auction site to ensure the load is safe for transport. All measurements should be verified by the buyer. DO NOT rely on these measurements for transportation purposes.





Lot Nr.

40

Date

16 November 2021

**Detail Information**

Location	Cradock
Year	
Manufacturer	
Model	Baalkarretjie
Asset Type	Seeding and Tillage Equipment
Serial Number or VIN	
Condition	5 - Very Good
Hours	
Km's	
Comes with	
Notes	Nuut oorgedoen



**Operator Station**

Cab Type	
Transmission Detail: Speed	
Transmission Detail: Shift Type	
Differential Lock	
Notes	

**Engine**

Fuel Type	
Manufacturer	
Model	
Notes	

**Rear Options**

Hitch Type	
PTO	
Hydraulic Outlets	
Notes	



**Body Details**

Size	
Type	
Notes	

**Drive Train**

Notes	
-------	--

**Weights**

Front Wheel Weights	
Back Wheel Weights	
Front Nose Weights	
Notes	

**Undercarriage/Suspension**

Tyre Manufacturer	
Front Tyre Size	
Rear Tyre Size	
Notes	

**Accessories**

Other Extensions	
------------------	--

**Functionality Tests**

Start	
Drives Forward	
Drives Backwards	
Brake Pedal Functions	

**Supporting Documents**

Certificate of Registration	
Vehicle Licence Certificate	
Service Record	
Other	

Functional Test Notes

**General**

The Detailed Equipment Information is limited in scope, and BKB Auctioneers has not inspected any aspects or components of the equipment other than those expressly set forth herein. Unless expressly stated, we make no representations or warranties, express or implied, concerning the equipment or its components, including without limitation any representations or warranties concerning functionality, conformity or compliance with any safety standard or requirement of any applicable authority or regulatory body, fitness for any particular purpose, or merchantability. You are strongly advised to perform your own detailed inspection of the equipment prior to bidding.

**Functions**

The Equipment is not tested under load or operated in all available gears. We make no representation or warranty that equipment is operating in accordance with manufacturers' specifications. No inspection has been performed with respect to any functionality aspect other than those expressly included herein. Only select photos have been provided for individual undercarriage components, and may not be indicative of the condition of the entire undercarriage as a whole.

**Dimensions**

Measurements are given as an estimate only. Actual loaded dimensions may vary based on truck/trailer height and the loaded machine configuration/position. It is the buyer's responsibility to measure all loads before leaving our auction site to ensure the load is safe for transport. All measurements should be verified by the buyer. DO NOT rely on these measurements for transportation purposes.



Lot Nr.

41

Date

16 November 2021

**Detail Information**

Location	Cradock
Year	
Manufacturer	Vetsak
Model	V shape
Asset Type	Seeding and Tillage Equipment
Serial Number or VIN	
Condition	5 - Very Good
Hours	
Km's	
Comes with	5 tines with knock on tips "new
Notes	Curved tines; Refurbished



**Operator Station**

Cab Type	
Transmission Detail: Speed	
Transmission Detail: Shift Type	
Differential Lock	
Notes	

**Engine**

Fuel Type	
Manufacturer	
Model	
Notes	

**Rear Options**

Hitch Type	
PTO	
Hydraulic Outlets	
Notes	



**Body Details**

Size	
Type	
Notes	

**Drive Train**

Notes	
-------	--

**Weights**

Front Wheel Weights	
Back Wheel Weights	
Front Nose Weights	
Notes	

**Undercarriage/Suspension**

Tyre Manufacturer	
Front Tyre Size	
Rear Tyre Size	
Notes	

**Accessories**

Other Extensions	
------------------	--

**Functionality Tests**

Start	
Drives Forward	
Drives Backwards	
Brake Pedal Functions	

**Supporting Documents**

Certificate of Registration	
Vehicle Licence Certificate	
Service Record	
Other	

Functional Test Notes

**General**

The Detailed Equipment Information is limited in scope, and BKB Auctioneers has not inspected any aspects or components of the equipment other than those expressly set forth herein. Unless expressly stated, we make no representations or warranties, express or implied, concerning the equipment or its components, including without limitation any representations or warranties concerning functionality, conformity or compliance with any safety standard or requirement of any applicable authority or regulatory body, fitness for any particular purpose, or merchantability. You are strongly advised to perform your own detailed inspection of the equipment prior to bidding.

**Functions**

The Equipment is not tested under load or operated in all available gears. We make no representation or warranty that equipment is operating in accordance with manufacturers' specifications. No inspection has been performed with respect to any functionality aspect other than those expressly included herein. Only select photos have been provided for individual undercarriage components, and may not be indicative of the condition of the entire undercarriage as a whole.

**Dimensions**

Measurements are given as an estimate only. Actual loaded dimensions may vary based on truck/trailer height and the loaded machine configuration/position. It is the buyer's responsibility to measure all loads before leaving our auction site to ensure the load is safe for transport. All measurements should be verified by the buyer. DO NOT rely on these measurements for transportation purposes.





Lot Nr.

42

Date

16 November 2021

**Detail Information**

Location	Cradock
Year	
Manufacturer	
Model	
Asset Type	Other Agri Equipment
Serial Number or VIN	
Condition	
Hours	
Km's	
Comes with	
Notes	Antieke Damskrop



**Operator Station**

Cab Type	
Transmission Detail: Speed	
Transmission Detail: Shift Type	
Differential Lock	
Notes	

**Engine**

Fuel Type	
Manufacturer	
Model	
Notes	

**Rear Options**

Hitch Type	
PTO	
Hydraulic Outlets	
Notes	

**Body Details**

Size	
Type	
Notes	

**Drive Train**

Notes	
-------	--

**Weights**

Front Wheel Weights	
Back Wheel Weights	
Front Nose Weights	
Notes	

**Undercarriage/Suspension**

Tyre Manufacturer	
Front Tyre Size	
Rear Tyre Size	
Notes	

**Accessories**

Other	
Extensions	

**Functionality Tests**

Start	
Drives Forward	
Drives Backwards	
Brake Pedal Functions	

**Supporting Documents**

Certificate of Registration	
Vehicle Licence Certificate	
Service Record	
Other	

Functional Test Notes	
-----------------------	--

**General**

The Detailed Equipment Information is limited in scope, and BKB Auctioneers has not inspected any aspects or components of the equipment other than those expressly set forth herein. Unless expressly stated, we make no representations or warranties, express or implied, concerning the equipment or its components, including without limitation any representations or warranties concerning functionality, conformity or compliance with any safety standard or requirement of any applicable authority or regulatory body, fitness for any particular purpose, or merchantability. You are strongly advised to perform your own detailed inspection of the equipment prior to bidding.

**Functions**

The Equipment is not tested under load or operated in all available gears. We make no representation or warranty that equipment is operating in accordance with manufacturers' specifications. No inspection has been performed with respect to any functionality aspect other than those expressly included herein. Only select photos have been provided for individual undercarriage components, and may not be indicative of the condition of the entire undercarriage as a whole.

**Dimensions**

Measurements are given as an estimate only. Actual loaded dimensions may vary based on truck/trailer height and the loaded machine configuration/position. It is the buyer's responsibility to measure all loads before leaving our auction site to ensure the load is safe for transport. All measurements should be verified by the buyer. DO NOT rely on these measurements for transportation purposes.



Lot Nr.

43

Date

16 November 2021

**Detail Information**

Location	<b>Cradock</b>
Year	
Manufacturer	
Model	
Asset Type	<b>Seeding and Tillage Equipment</b>
Serial Number or VIN	
Condition	
Hours	
Km's	
Comes with	
Notes	<b>Antieke Hooi hark</b>



**Operator Station**

Cab Type	
Transmission Detail: Speed	
Transmission Detail: Shift Type	
Differential Lock	
Notes	

**Engine**

Fuel Type	
Manufacturer	
Model	
Notes	

**Rear Options**

Hitch Type	
PTO	
Hydraulic Outlets	
Notes	

**Body Details**

Size	
Type	
Notes	

**Drive Train**

Notes	
-------	--

**Weights**

Front Wheel Weights	
Back Wheel Weights	
Front Nose Weights	
Notes	

**Undercarriage/Suspension**

Tyre Manufacturer	
Front Tyre Size	
Rear Tyre Size	
Notes	

**Accessories**

Other Extensions	
------------------	--

**Functionality Tests**

Start	
Drives Forward	
Drives Backwards	
Brake Pedal Functions	

**Supporting Documents**

Certificate of Registration	
Vehicle Licence Certificate	
Service Record	
Other	

Functional Test Notes	
-----------------------	--

**General**

The Detailed Equipment Information is limited in scope, and BKB Auctioneers has not inspected any aspects or components of the equipment other than those expressly set forth herein. Unless expressly stated, we make no representations or warranties, express or implied, concerning the equipment or its components, including without limitation any representations or warranties concerning functionality, conformity or compliance with any safety standard or requirement of any applicable authority or regulatory body, fitness for any particular purpose, or merchantability. You are strongly advised to perform your own detailed inspection of the equipment prior to bidding.

**Functions**

The Equipment is not tested under load or operated in all available gears. We make no representation or warranty that equipment is operating in accordance with manufacturers' specifications. No inspection has been performed with respect to any functionality aspect other than those expressly included herein. Only select photos have been provided for individual undercarriage components, and may not be indicative of the condition of the entire undercarriage as a whole.

**Dimensions**

Measurements are given as an estimate only. Actual loaded dimensions may vary based on truck/trailer height and the loaded machine configuration/position. It is the buyer's responsibility to measure all loads before leaving our auction site to ensure the load is safe for transport. All measurements should be verified by the buyer. DO NOT rely on these measurements for transportation purposes.





Lot Nr.

44

Date

16 November 2021

**Detail Information**

Location	Brandfort
Year	
Manufacturer	
Model	
Asset Type	Other Agri Equipment
Serial Number or VIN	
Condition	2 - Poor
Hours	
Km's	
Comes with	
Notes	7 skaar vibrasie ploeg



**Operator Station**

Cab Type	
Transmission Detail: Speed	
Transmission Detail: Shift Type	
Differential Lock	
Notes	

**Engine**

Fuel Type	
Manufacturer	
Model	
Notes	

**Rear Options**

Hitch Type	
PTO	
Hydraulic Outlets	
Notes	



**Body Details**

Size	
Type	
Notes	

**Drive Train**

Notes	
-------	--

**Weights**

Front Wheel Weights	
Back Wheel Weights	
Front Nose Weights	
Notes	

**Undercarriage/Suspension**

Tyre Manufacturer	
Front Tyre Size	
Rear Tyre Size	
Notes	



**Accessories**

Other Extensions	
------------------	--

**Functionality Tests**

Start	
Drives Forward	
Drives Backwards	
Brake Pedal Functions	

**Supporting Documents**

Certificate of Registration	
Vehicle Licence Certificate	
Service Record	
Other	

Functional Test Notes

--

**General**

The Detailed Equipment Information is limited in scope, and BKB Auctioneers has not inspected any aspects or components of the equipment other than those expressly set forth herein. Unless expressly stated, we make no representations or warranties, express or implied, concerning the equipment or its components, including without limitation any representations or warranties concerning functionality, conformity or compliance with any safety standard or requirement of any applicable authority or regulatory body, fitness for any particular purpose, or merchantability. You are strongly advised to perform your own detailed inspection of the equipment prior to bidding.

**Functions**

The Equipment is not tested under load or operated in all available gears. We make no representation or warranty that equipment is operating in accordance with manufacturers' specifications. No inspection has been performed with respect to any functionality aspect other than those expressly included herein. Only select photos have been provided for individual undercarriage components, and may not be indicative of the condition of the entire undercarriage as a whole.

**Dimensions**

Measurements are given as an estimate only. Actual loaded dimensions may vary based on truck/trailer height and the loaded machine configuration/position. It is the buyer's responsibility to measure all loads before leaving our auction site to ensure the load is safe for transport. All measurements should be verified by the buyer. DO NOT rely on these measurements for transportation purposes.



Lot Nr.

45

Date

16 November 2021

**Detail Information**

Location	Brandfort
Year	
Manufacturer	Massey Ferguson
Model	Ploeg
Asset Type	Seeding and Tillage Equipment
Serial Number or VIN	
Condition	3 - Fair
Hours	
Km's	
Comes with	
Notes	11 skottel (eenrigting) ploeg



**Operator Station**

Cab Type	
Transmission Detail: Speed	
Transmission Detail: Shift Type	
Differential Lock	
Notes	

**Engine**

Fuel Type	
Manufacturer	
Model	
Notes	

**Rear Options**

Hitch Type	
PTO	
Hydraulic Outlets	
Notes	



**Body Details**

Size	
Type	
Notes	

**Drive Train**

Notes	
-------	--

**Weights**

Front Wheel Weights	
Back Wheel Weights	
Front Nose Weights	
Notes	

**Undercarriage/Suspension**

Tyre Manufacturer	
Front Tyre Size	
Rear Tyre Size	
Notes	



**Accessories**

Other Extensions	
------------------	--

**Functionality Tests**

Start	
Drives Forward	
Drives Backwards	
Brake Pedal Functions	

**Supporting Documents**

Certificate of Registration	
Vehicle Licence Certificate	
Service Record	
Other	

Functional Test Notes

**General**

The Detailed Equipment Information is limited in scope, and BKB Auctioneers has not inspected any aspects or components of the equipment other than those expressly set forth herein. Unless expressly stated, we make no representations or warranties, express or implied, concerning the equipment or its components, including without limitation any representations or warranties concerning functionality, conformity or compliance with any safety standard or requirement of any applicable authority or regulatory body, fitness for any particular purpose, or merchantability. You are strongly advised to perform your own detailed inspection of the equipment prior to bidding.

**Functions**

The Equipment is not tested under load or operated in all available gears. We make no representation or warranty that equipment is operating in accordance with manufacturers' specifications. No inspection has been performed with respect to any functionality aspect other than those expressly included herein. Only select photos have been provided for individual undercarriage components, and may not be indicative of the condition of the entire undercarriage as a whole.

**Dimensions**

Measurements are given as an estimate only. Actual loaded dimensions may vary based on truck/trailer height and the loaded machine configuration/position. It is the buyer's responsibility to measure all loads before leaving our auction site to ensure the load is safe for transport. All measurements should be verified by the buyer. DO NOT rely on these measurements for transportation purposes.





Lot Nr.

46

Date

16 November 2021

**Detail Information**

Location	Brandfort
Year	
Manufacturer	
Model	
Asset Type	Other Agri Equipment
Serial Number or VIN	
Condition	4 - Good
Hours	
Km's	
Comes with	
Notes	23 x Selfvoerders (Vir blokkiesbale)

**Operator Station**

Cab Type	
Transmission Detail: Speed	
Transmission Detail: Shift Type	
Differential Lock	
Notes	

**Engine**

Fuel Type	
Manufacturer	
Model	
Notes	

**Rear Options**

Hitch Type	
PTO	
Hydraulic Outlets	
Notes	

**Body Details**

Size	
Type	
Notes	

**Drive Train**

Notes	
-------	--

**Weights**

Front Wheel Weights	
Back Wheel Weights	
Front Nose Weights	
Notes	

**Undercarriage/Suspension**

Tyre Manufacturer	
Front Tyre Size	
Rear Tyre Size	
Notes	

**Accessories**

Other	
Extensions	

**Functionality Tests**

Start	
Drives Forward	
Drives Backwards	
Brake Pedal Functions	

Functional Test Notes

**Supporting Documents**

Certificate of Registration	
Vehicle Licence Certificate	
Service Record	
Other	



**General**

The Detailed Equipment Information is limited in scope, and BKB Auctioneers has not inspected any aspects or components of the equipment other than those expressly set forth herein. Unless expressly stated, we make no representations or warranties, express or implied, concerning the equipment or its components, including without limitation any representations or warranties concerning functionality, conformity or compliance with any safety standard or requirement of any applicable authority or regulatory body, fitness for any particular purpose, or merchantability. You are strongly advised to perform your own detailed inspection of the equipment prior to bidding.

**Functions**

The Equipment is not tested under load or operated in all available gears. We make no representation or warranty that equipment is operating in accordance with manufacturers' specifications. No inspection has been performed with respect to any functionality aspect other than those expressly included herein. Only select photos have been provided for individual undercarriage components, and may not be indicative of the condition of the entire undercarriage as a whole.

**Dimensions**

Measurements are given as an estimate only. Actual loaded dimensions may vary based on truck/trailer height and the loaded machine configuration/position. It is the buyer's responsibility to measure all loads before leaving our auction site to ensure the load is safe for transport. All measurements should be verified by the buyer. DO NOT rely on these measurements for transportation purposes.



Lot Nr.

46A

Date

16 November 2021

**Detail Information**

Location	Dewetsdorp
Year	1980
Manufacturer	John Deere
Model	8630
Asset Type	Tractor
Serial Number or VIN	
Condition	3 - Fair
Hours	10300
Km's	

Comes with	
Notes	John Deere (8 Wiel)

**Operator Station**

Cab Type	Kajuit Goud Ranche
Transmission Detail: Speed	
Transmission Detail: Shift Type	Semi Automatic
Differential Lock	Yes
Notes	4x4

**Engine**

Fuel Type	Diesel
Manufacturer	John Deere
Model	
Notes	

**Rear Options**

Hitch Type	
PTO	No
Hydraulic Outlets	Yes
Notes	3 Punt

**Body Details**

Size	
Type	
Notes	

**Drive Train**

Notes	
-------	--

**Weights**

Front Wheel Weights	Yes
Back Wheel Weights	Yes
Front Nose Weights	Yes
Notes	

**Undercarriage/Suspension**

Tyre Manufacturer	Fire Stone & BKT
Front Tyre Size	18.4 - 384 - 10% Tread
Rear Tyre Size	18.4 - 384 - Nuut 90% Tread
Notes	

**Accessories**

Other	
Extensions	

**Functionality Tests**

Start	YES
Drives Forward	YES
Drives Backwards	YES
Brake Pedal Functions	YES

Functional Test Notes **Nie op die pad. (Geen Papiere)**



**Supporting Documents**

Certificate of Registration	
Vehicle Licence Certificate	
Service Record	
Other	

**General**

The Detailed Equipment Information is limited in scope, and BKB Auctioneers has not inspected any aspects or components of the equipment other than those expressly set forth herein. Unless expressly stated, we make no representations or warranties, express or implied, concerning the equipment or its components, including without limitation any representations or warranties concerning functionality, conformity or compliance with any safety standard or requirement of any applicable authority or regulatory body, fitness for any particular purpose, or merchantability. You are strongly advised to perform your own detailed

**Functions**

The Equipment is not tested under load or operated in all available gears. We make no representation or warranty that equipment is operating in accordance with manufacturers' specifications. No inspection has been performed with respect to any functionality aspect other than those expressly included herein. Only select photos have been provided for individual undercarriage components, and may not be indicative of the condition of the entire undercarriage as a whole.

**Dimensions**

Measurements are given as an estimate only. Actual loaded dimensions may vary based on truck/trailer height and the loaded machine configuration/position. It is the buyer's responsibility to measure all loads before leaving our auction site to ensure the load is safe for transport. All measurements should be verified by the buyer. DO NOT rely on these measurements for transportation purposes.





Lot Nr.

46B

Date

16 November 2021

**Detail Information**

Location	Dewetsdorp
Year	
Manufacturer	John Deere
Model	2140
Asset Type	Tractor
Serial Number or VIN	
Condition	3 - Fair
Hours	Onbekend
Km's	
Comes with	Laaigraaf; Laaibak en Baalvurk
Notes	John Deere

**Operator Station**

Cab Type	Open
Transmission Detail: Speed	
Transmission Detail: Shift Type	Manual
Differential Lock	Yes
Notes	

**Engine**

Fuel Type	Diesel
Manufacturer	John Deere
Model	
Notes	Op Papiere

**Rear Options**

Hitch Type	
PTO	Yes
Hydraulic Outlets	Yes
Notes	Single

**Body Details**

Size	60 KW
Type	
Notes	

**Drive Train**

Notes	
-------	--

**Weights**

Front Wheel Weights	Yes
Back Wheel Weights	No
Front Nose Weights	Yes
Notes	

**Undercarriage/Suspension**

Tyre Manufacturer	BKT & Firestone
Front Tyre Size	10.00 - 16 80% Tread
Rear Tyre Size	18.4 - 3410% Tread
Notes	

**Accessories**

Other	
Extensions	

**Functionality Tests**

Start	YES
Drives Forward	YES
Drives Backwards	YES
Brake Pedal Functions	YES

Functional Test Notes

--

**Supporting Documents**

Certificate of Registration	
Vehicle Licence Certificate	
Service Record	
Other	

**General**

The Detailed Equipment Information is limited in scope, and BKB Auctioneers has not inspected any aspects or components of the equipment other than those expressly set forth herein. Unless expressly stated, we make no representations or warranties, express or implied, concerning the equipment or its components, including without limitation any representations or warranties concerning functionality, conformity or compliance with any safety standard or requirement of any applicable authority or regulatory body, fitness for any particular purpose, or merchantability. You are strongly advised to perform your own detailed

**Functions**

The Equipment is not tested under load or operated in all available gears. We make no representation or warranty that equipment is operating in accordance with manufacturers' specifications. No inspection has been performed with respect to any functionality aspect other than those expressly included herein. Only select photos have been provided for individual undercarriage components, and may not be indicative of the condition of the entire undercarriage as a whole.

**Dimensions**

Measurements are given as an estimate only. Actual loaded dimensions may vary based on truck/trailer height and the loaded machine configuration/position. It is the buyer's responsibility to measure all loads before leaving our auction site to ensure the load is safe for transport. All measurements should be verified by the buyer. DO NOT rely on these measurements for transportation purposes.



SCAN ME# 46B

Lot Nr.

46C

Date

16 November 2021

**Detail Information**

Location	Dewetsdorp
Year	2008
Manufacturer	John Deere
Model	6630
Asset Type	Tractor
Serial Number or VIN	
Condition	4 - Good
Hours	13 700
Km's	
Comes with	
Notes	John Deere 6630; 4x4; 92kw; Engin gedoen op 12500uur

**Operator Station**

Cab Type	
Transmission Detail: Speed	
Transmission Detail: Shift Type	Manual
Differential Lock	Yes
Notes	

**Engine**

Fuel Type	Diesel
Manufacturer	
Model	
Notes	

**Rear Options**

Hitch Type	
PTO	Yes
Hydraulic Outlets	Yes
Notes	Dubbel (4 punte)

**Body Details**

Size	
Type	
Notes	

**Drive Train**

Notes	
-------	--

**Weights**

Front Wheel Weights	No
Back Wheel Weights	Yes
Front Nose Weights	Yes
Notes	

**Undercarriage/Suspension**

Tyre Manufacturer	BKT
Front Tyre Size	Nuut
Rear Tyre Size	520/85 R38Nuut
Notes	

**Accessories**

Other	
Extensions	

**Functionality Tests**

Start	YES
Drives Forward	YES
Drives Backwards	YES
Brake Pedal Functions	YES

Functional Test Notes

--

**Supporting Documents**

Certificate of Registration	
Vehicle Licence Certificate	
Service Record	
Other	

**General**

The Detailed Equipment Information is limited in scope, and BKB Auctioneers has not inspected any aspects or components of the equipment other than those expressly set forth herein. Unless expressly stated, we make no representations or warranties, express or implied, concerning the equipment or its components, including without limitation any representations or warranties concerning functionality, conformity or compliance with any safety standard or requirement of any applicable authority or regulatory body, fitness for any particular purpose, or merchantability. You are strongly advised to perform your own detailed

**Functions**

The Equipment is not tested under load or operated in all available gears. We make no representation or warranty that equipment is operating in accordance with manufacturers' specifications. No inspection has been performed with respect to any functionality aspect other than those expressly included herein. Only select photos have been provided for individual undercarriage components, and may not be indicative of the condition of the entire undercarriage as a whole.

**Dimensions**

Measurements are given as an estimate only. Actual loaded dimensions may vary based on truck/trailer height and the loaded machine configuration/position. It is the buyer's responsibility to measure all loads before leaving our auction site to ensure the load is safe for transport. All measurements should be verified by the buyer. DO NOT rely on these measurements for transportation purposes.



SCAN ME #46C



Lot Nr.

47

Date

16 November 2021

**Detail Information**

Location	
Year	
Manufacturer	
Model	
Asset Type	<b>Tractor Attachments</b>
Serial Number or VIN	
Condition	<b>5 - Very Good</b>
Hours	
Km's	

Comes with	<b>Sleepwa met valkante</b>
Notes	<b>Wa heeltemal oor gedoen</b>

**Operator Station**

Cab Type	
Transmission Detail: Speed	
Transmission Detail: Shift Type	
Differential Lock	
Notes	

**Engine**

Fuel Type	
Manufacturer	
Model	
Notes	

**Rear Options**

Hitch Type	
PTO	
Hydraulic Outlets	
Notes	

**Body Details**

Size	
Type	
Notes	

**Drive Train**

Notes	
-------	--

**Weights**

Front Wheel Weights	
Back Wheel Weights	
Front Nose Weights	
Notes	

**Undercarriage/Suspension**

Tyre Manufacturer	
Front Tyre Size	
Rear Tyre Size	
Notes	

**Accessories**

Other	
Extensions	

**Functionality Tests**

Start	
Drives Forward	
Drives Backwards	
Brake Pedal Functions	

Functional Test Notes

**Supporting Documents**

Certificate of Registration	
Vehicle Licence Certificate	
Service Record	
Other	

**General**

The Detailed Equipment Information is limited in scope, and BKB Auctioneers has not inspected any aspects or components of the equipment other than those expressly set forth herein. Unless expressly stated, we make no representations or warranties, express or implied, concerning the equipment or its components, including without limitation any representations or warranties concerning functionality, conformity or compliance with any safety standard or requirement of any applicable authority or regulatory body, fitness for any particular purpose, or merchantability. You are strongly advised to perform your own detailed inspection of the equipment prior to bidding.

**Functions**

The Equipment is not tested under load or operated in all available gears. We make no representation or warranty that equipment is operating in accordance with manufacturers' specifications. No inspection has been performed with respect to any functionality aspect other than those expressly included herein. Only select photos have been provided for individual undercarriage components, and may not be indicative of the condition of the entire undercarriage as a whole.

**Dimensions**

Measurements are given as an estimate only. Actual loaded dimensions may vary based on truck/trailer height and the loaded machine configuration/position. It is the buyer's responsibility to measure all loads before leaving our auction site to ensure the load is safe for transport. All measurements should be verified by the buyer. DO NOT rely on these measurements for transportation purposes.



Scan me #47

Lot Nr.

48

Date

16 November 2021

**Detail Information**

Location	
Year	
Manufacturer	
Model	
Asset Type	Trailer
Serial Number or VIN	
Condition	3 - Fair
Hours	
Km's	
Comes with	
Notes	Sleepwa met valkante

**Operator Station**

Cab Type	
Transmission Detail: Speed	
Transmission Detail: Shift Type	
Differential Lock	
Notes	

**Engine**

Fuel Type	
Manufacturer	
Model	
Notes	

**Rear Options**

Hitch Type	
PTO	
Hydraulic Outlets	
Notes	

**Body Details**

Size	
Type	
Notes	

**Drive Train**

Notes	
-------	--

**Weights**

Front Wheel Weights	
Back Wheel Weights	
Front Nose Weights	
Notes	

**Undercarriage/Suspension**

Tyre Manufacturer	
Front Tyre Size	
Rear Tyre Size	
Notes	

**Accessories**

Other	
Extensions	

**Functionality Tests**

Start	
Drives Forward	
Drives Backwards	
Brake Pedal Functions	

**Supporting Documents**

Certificate of Registration	
Vehicle Licence Certificate	
Service Record	
Other	

Functional Test Notes

--

**General**

The Detailed Equipment Information is limited in scope, and BKB Auctioneers has not inspected any aspects or components of the equipment other than those expressly set forth herein. Unless expressly stated, we make no representations or warranties, express or implied, concerning the equipment or its components, including without limitation any representations or warranties concerning functionality, conformity or compliance with any safety standard or requirement of any applicable authority or regulatory body, fitness for any particular purpose, or merchantability. You are strongly advised to perform your own detailed inspection of the equipment prior to bidding.

**Functions**

The Equipment is not tested under load or operated in all available gears. We make no representation or warranty that equipment is operating in accordance with manufacturers' specifications. No inspection has been performed with respect to any functionality aspect other than those expressly included herein. Only select photos have been provided for individual undercarriage components, and may not be indicative of the condition of the entire undercarriage as a whole.

**Dimensions**

Measurements are given as an estimate only. Actual loaded dimensions may vary based on truck/trailer height and the loaded machine configuration/position. It is the buyer's responsibility to measure all loads before leaving our auction site to ensure the load is safe for transport. All measurements should be verified by the buyer. DO NOT rely on these measurements for transportation purposes.



Scan me #48



Lot Nr.

49

Date

16 November 2021

**Detail Information**

Location	
Year	
Manufacturer	RyAgri
Model	
Asset Type	Seeding and Tillage Equipment
Serial Number or VIN	
Condition	5 - Very Good
Hours	
Km's	
Comes with Notes	Kunsmis strooier; 1ton; vlekvrje staal



**Operator Station**

Cab Type	
Transmission Detail: Speed	
Transmission Detail: Shift Type	
Differential Lock	
Notes	

**Engine**

Fuel Type	
Manufacturer	
Model	
Notes	

**Rear Options**

Hitch Type	
PTO	
Hydraulic Outlets	
Notes	

**Body Details**

Size	
Type	
Notes	

**Drive Train**

Notes	
-------	--

**Weights**

Front Wheel Weights	
Back Wheel Weights	
Front Nose Weights	
Notes	

**Undercarriage/Suspension**

Tyre Manufacturer	
Front Tyre Size	
Rear Tyre Size	
Notes	

**Accessories**

Other Extensions	
------------------	--

**Functionality Tests**

Start	
Drives Forward	
Drives Backwards	
Brake Pedal Functions	

**Supporting Documents**

Certificate of Registration	
Vehicle Licence Certificate	
Service Record	
Other	

Functional Test Notes	
-----------------------	--

**General**

The Detailed Equipment Information is limited in scope, and BKB Auctioneers has not inspected any aspects or components of the equipment other than those expressly set forth herein. Unless expressly stated, we make no representations or warranties, express or implied, concerning the equipment or its components, including without limitation any representations or warranties concerning functionality, conformity or compliance with any safety standard or requirement of any applicable authority or regulatory body, fitness for any particular purpose, or merchantability. You are strongly advised to perform your own detailed inspection of the equipment prior to bidding.

**Functions**

The Equipment is not tested under load or operated in all available gears. We make no representation or warranty that equipment is operating in accordance with manufacturers' specifications. No inspection has been performed with respect to any functionality aspect other than those expressly included herein. Only select photos have been provided for individual undercarriage components, and may not be indicative of the condition of the entire undercarriage as a whole.

**Dimensions**

Measurements are given as an estimate only. Actual loaded dimensions may vary based on truck/trailer height and the loaded machine configuration/position. It is the buyer's responsibility to measure all loads before leaving our auction site to ensure the load is safe for transport. All measurements should be verified by the buyer. DO NOT rely on these measurements for transportation purposes.



Lot Nr.

50

Date

16 November 2021

**Detail Information**

Location	
Year	
Manufacturer	<b>Claas</b>
Model	<b>Markland 50 Baler</b>
Asset Type	<b>Hay &amp; Forage Equipment</b>
Serial Number or VIN	
Condition	<b>2 - Poor</b>
Hours	
Km's	
Comes with	
Notes	



**Operator Station**

Cab Type	
Transmission Detail: Speed	
Transmission Detail: Shift Type	
Differential Lock	
Notes	

**Engine**

Fuel Type	
Manufacturer	
Model	
Notes	

**Rear Options**

Hitch Type	
PTO	
Hydraulic Outlets	
Notes	



**Body Details**

Size	
Type	
Notes	

**Drive Train**

Notes	
-------	--

**Weights**

Front Wheel Weights	
Back Wheel Weights	
Front Nose Weights	
Notes	

**Undercarriage/Suspension**

Tyre Manufacturer	
Front Tyre Size	
Rear Tyre Size	
Notes	

**Accessories**

Other Extensions	
------------------	--

**Functionality Tests**

Start	
Drives Forward	
Drives Backwards	
Brake Pedal Functions	

**Supporting Documents**

Certificate of Registration	
Vehicle Licence Certificate	
Service Record	
Other	

Functional Test Notes	
-----------------------	--

**General**

The Detailed Equipment Information is limited in scope, and BKB Auctioneers has not inspected any aspects or components of the equipment other than those expressly set forth herein. Unless expressly stated, we make no representations or warranties, express or implied, concerning the equipment or its components, including without limitation any representations or warranties concerning functionality, conformity or compliance with any safety standard or requirement of any applicable authority or regulatory body, fitness for any particular purpose, or merchantability. You are strongly advised to perform your own detailed inspection of the equipment prior to bidding.

**Functions**

The Equipment is not tested under load or operated in all available gears. We make no representation or warranty that equipment is operating in accordance with manufacturers' specifications. No inspection has been performed with respect to any functionality aspect other than those expressly included herein. Only select photos have been provided for individual undercarriage components, and may not be indicative of the condition of the entire undercarriage as a whole.

**Dimensions**

Measurements are given as an estimate only. Actual loaded dimensions may vary based on truck/trailer height and the loaded machine configuration/position. It is the buyer's responsibility to measure all loads before leaving our auction site to ensure the load is safe for transport. All measurements should be verified by the buyer. DO NOT rely on these measurements for transportation purposes.





Lot Nr.

51

Date

16 November 2021

**Detail Information**

Location	
Year	
Manufacturer	<b>Murry</b>
Model	
Asset Type	<b>Tractor Attachments</b>
Serial Number or VIN	
Condition	<b>2 - Poor</b>
Hours	
Km's	
Comes with	
Notes	<b>Damskrop; Kort aandag en bande</b>



**Operator Station**

Cab Type	
Transmission Detail: Speed	
Transmission Detail: Shift Type	
Differential Lock	
Notes	

**Engine**

Fuel Type	
Manufacturer	
Model	
Notes	

**Rear Options**

Hitch Type	
PTO	
Hydraulic Outlets	
Notes	

**Body Details**

Size	
Type	
Notes	

**Drive Train**

Notes	
-------	--

**Weights**

Front Wheel Weights	
Back Wheel Weights	
Front Nose Weights	
Notes	

**Undercarriage/Suspension**

Tyre Manufacturer	
Front Tyre Size	
Rear Tyre Size	
Notes	

**Accessories**

Other	
Extensions	

**Functionality Tests**

Start	
Drives Forward	
Drives Backwards	
Brake Pedal Functions	

**Supporting Documents**

Certificate of Registration	
Vehicle Licence Certificate	
Service Record	
Other	

Functional Test Notes	
-----------------------	--

**General**

The Detailed Equipment Information is limited in scope, and BKB Auctioneers has not inspected any aspects or components of the equipment other than those expressly set forth herein. Unless expressly stated, we make no representations or warranties, express or implied, concerning the equipment or its components, including without limitation any representations or warranties concerning functionality, conformity or compliance with any safety standard or requirement of any applicable authority or regulatory body, fitness for any particular purpose, or merchantability. You are strongly advised to perform your own detailed inspection of the equipment prior to bidding.

**Functions**

The Equipment is not tested under load or operated in all available gears. We make no representation or warranty that equipment is operating in accordance with manufacturers' specifications. No inspection has been performed with respect to any functionality aspect other than those expressly included herein. Only select photos have been provided for individual undercarriage components, and may not be indicative of the condition of the entire undercarriage as a whole.

**Dimensions**

Measurements are given as an estimate only. Actual loaded dimensions may vary based on truck/trailer height and the loaded machine configuration/position. It is the buyer's responsibility to measure all loads before leaving our auction site to ensure the load is safe for transport. All measurements should be verified by the buyer. DO NOT rely on these measurements for transportation purposes.



Lot Nr.

52

Date

16 November 2021

**Detail Information**

Location	
Year	
Manufacturer	
Model	
Asset Type	<b>Tractor Attachments</b>
Serial Number or VIN	
Condition	
Hours	
Km's	

Comes with	
Notes	<b>Trip K grondbreker 25 tand; met rollers en fynsaadbak; hidroulies</b>



**Operator Station**

Cab Type	
Transmission Detail: Speed	
Transmission Detail: Shift Type	
Differential Lock	
Notes	

**Engine**

Fuel Type	
Manufacturer	
Model	
Notes	

**Rear Options**

Hitch Type	
PTO	
Hydraulic Outlets	
Notes	

**Body Details**

Size	
Type	
Notes	

**Drive Train**

Notes	
-------	--

**Weights**

Front Wheel Weights	
Back Wheel Weights	
Front Nose Weights	
Notes	

**Undercarriage/Suspension**

Tyre Manufacturer	
Front Tyre Size	
Rear Tyre Size	
Notes	

**Accessories**

Other	
Extensions	

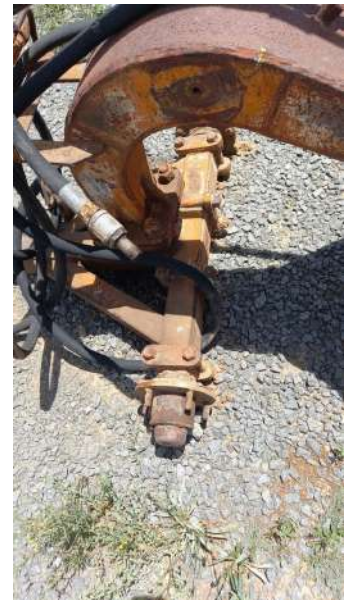
**Functionality Tests**

Start	
Drives Forward	
Drives Backwards	
Brake Pedal Functions	

Functional Test Notes	
-----------------------	--

**Supporting Documents**

Certificate of Registration	
Vehicle Licence Certificate	
Service Record	
Other	



**General**

The Detailed Equipment Information is limited in scope, and BKB Auctioneers has not inspected any aspects or components of the equipment other than those expressly set forth herein. Unless expressly stated, we make no representations or warranties, express or implied, concerning the equipment or its components, including without limitation any representations or warranties concerning functionality, conformity or compliance with any safety standard or requirement of any applicable authority or regulatory body, fitness for any particular purpose, or merchantability. You are strongly advised to perform your own detailed inspection of the equipment prior to bidding.

**Functions**

The Equipment is not tested under load or operated in all available gears. We make no representation or warranty that equipment is operating in accordance with manufacturers' specifications. No inspection has been performed with respect to any functionality aspect other than those expressly included herein. Only select photos have been provided for individual undercarriage components, and may not be indicative of the condition of the entire undercarriage as a whole.

**Dimensions**

Measurements are given as an estimate only. Actual loaded dimensions may vary based on truck/trailer height and the loaded machine configuration/position. It is the buyer's responsibility to measure all loads before leaving our auction site to ensure the load is safe for transport. All measurements should be verified by the buyer. DO NOT rely on these measurements for transportation purposes.





Lot Nr.

53

Date

16 November 2021

**Detail Information**

Location	
Year	
Manufacturer	<b>Claas</b>
Model	<b>Rolant 62 Ronde baler</b>
Asset Type	<b>Hay &amp; Forage Equipment</b>
Serial Number or VIN	
Condition	
Hours	
Km's	
Comes with	
Notes	<b>In very poor condition; Kan gebruik word vir parte</b>



**Operator Station**

Cab Type	
Transmission Detail: Speed	
Transmission Detail: Shift Type	
Differential Lock	
Notes	

**Engine**

Fuel Type	
Manufacturer	
Model	
Notes	

**Rear Options**

Hitch Type	
PTO	
Hydraulic Outlets	
Notes	

**Body Details**

Size	
Type	
Notes	

**Drive Train**

Notes	
-------	--

**Weights**

Front Wheel Weights	
Back Wheel Weights	
Front Nose Weights	
Notes	

**Undercarriage/Suspension**

Tyre Manufacturer	
Front Tyre Size	
Rear Tyre Size	
Notes	

**Accessories**

Other Extensions	
------------------	--

**Functionality Tests**

Start	
Drives Forward	
Drives Backwards	
Brake Pedal Functions	

Functional Test Notes	
-----------------------	--

**Supporting Documents**

Certificate of Registration	
Vehicle Licence Certificate	
Service Record	
Other	



**General**

The Detailed Equipment Information is limited in scope, and BKB Auctioneers has not inspected any aspects or components of the equipment other than those expressly set forth herein. Unless expressly stated, we make no representations or warranties, express or implied, concerning the equipment or its components, including without limitation any representations or warranties concerning functionality, conformity or compliance with any safety standard or requirement of any applicable authority or regulatory body, fitness for any particular purpose, or merchantability. You are strongly advised to perform your own detailed inspection of the equipment prior to bidding.

**Functions**

The Equipment is not tested under load or operated in all available gears. We make no representation or warranty that equipment is operating in accordance with manufacturers' specifications. No inspection has been performed with respect to any functionality aspect other than those expressly included herein. Only select photos have been provided for individual undercarriage components, and may not be indicative of the condition of the entire undercarriage as a whole.

**Dimensions**

Measurements are given as an estimate only. Actual loaded dimensions may vary based on truck/trailer height and the loaded machine configuration/position. It is the buyer's responsibility to measure all loads before leaving our auction site to ensure the load is safe for transport. All measurements should be verified by the buyer. DO NOT rely on these measurements for transportation purposes.



Lot Nr.

54

Date

16 November 2021

**Detail Information**

Location	
Year	
Manufacturer	John Deere
Model	
Asset Type	Other Agri Equipment
Serial Number or VIN	
Condition	3 - Fair
Hours	
Km's	
Comes with	
Notes	2 rims met bande



**Operator Station**

Cab Type	
Transmission Detail: Speed	
Transmission Detail: Shift Type	
Differential Lock	
Notes	



**Engine**

Fuel Type	
Manufacturer	
Model	
Notes	

**Rear Options**

Hitch Type	
PTO	
Hydraulic Outlets	
Notes	

**Body Details**

Size	
Type	
Notes	

**Drive Train**

Notes	
-------	--

**Weights**

Front Wheel Weights	
Back Wheel Weights	
Front Nose Weights	
Notes	

**Undercarriage/Suspension**

Tyre Manufacturer	
Front Tyre Size	
Rear Tyre Size	
Notes	



**Accessories**

Other	
Extensions	

**Functionality Tests**

Start	
Drives Forward	
Drives Backwards	
Brake Pedal Functions	

**Supporting Documents**

Certificate of Registration	
Vehicle Licence Certificate	
Service Record	
Other	

Functional Test Notes

**General**

The Detailed Equipment Information is limited in scope, and BKB Auctioneers has not inspected any aspects or components of the equipment other than those expressly set forth herein. Unless expressly stated, we make no representations or warranties, express or implied, concerning the equipment or its components, including without limitation any representations or warranties concerning functionality, conformity or compliance with any safety standard or requirement of any applicable authority or regulatory body, fitness for any particular purpose, or merchantability. You are strongly advised to perform your own detailed inspection of the equipment prior to bidding.

**Functions**

The Equipment is not tested under load or operated in all available gears. We make no representation or warranty that equipment is operating in accordance with manufacturers' specifications. No inspection has been performed with respect to any functionality aspect other than those expressly included herein. Only select photos have been provided for individual undercarriage components, and may not be indicative of the condition of the entire undercarriage as a whole.

**Dimensions**

Measurements are given as an estimate only. Actual loaded dimensions may vary based on truck/trailer height and the loaded machine configuration/position. It is the buyer's responsibility to measure all loads before leaving our auction site to ensure the load is safe for transport. All measurements should be verified by the buyer. DO NOT rely on these measurements for transportation purposes.





Lot Nr.

55

Date

16 November 2021

**Detail Information**

Location	Dewetsdorp
Year	2016
Manufacturer	Claas
Model	Rollant 340RC Baler
Asset Type	Hay & Forage Equipment
Serial Number or VIN	
Condition	4 - Good
Hours	
Km's	
Comes with	Net en tou baler
Notes	Baie goeie toestand



**Operator Station**

Cab Type	
Transmission Detail: Speed	
Transmission Detail: Shift Type	
Differential Lock	
Notes	



**Engine**

Fuel Type	
Manufacturer	
Model	
Notes	

**Rear Options**

Hitch Type	
PTO	
Hydraulic Outlets	
Notes	



**Body Details**

Size	
Type	
Notes	

**Drive Train**

Notes	
-------	--

**Weights**

Front Wheel Weights	
Back Wheel Weights	
Front Nose Weights	
Notes	

**Undercarriage/Suspension**

Tyre Manufacturer	
Front Tyre Size	
Rear Tyre Size	
Notes	

**Accessories**

Other Extensions	
------------------	--

**Functionality Tests**

Start	
Drives Forward	
Drives Backwards	
Brake Pedal Functions	

**Supporting Documents**

Certificate of Registration	
Vehicle Licence Certificate	
Service Record	
Other	

Functional Test Notes

**General**

The Detailed Equipment Information is limited in scope, and BKB Auctioneers has not inspected any aspects or components of the equipment other than those expressly set forth herein. Unless expressly stated, we make no representations or warranties, express or implied, concerning the equipment or its components, including without limitation any representations or warranties concerning functionality, conformity or compliance with any safety standard or requirement of any applicable authority or regulatory body, fitness for any particular purpose, or merchantability. You are strongly advised to perform your own detailed inspection of the equipment prior to bidding.

**Functions**

The Equipment is not tested under load or operated in all available gears. We make no representation or warranty that equipment is operating in accordance with manufacturers' specifications. No inspection has been performed with respect to any functionality aspect other than those expressly included herein. Only select photos have been provided for individual undercarriage components, and may not be indicative of the condition of the entire undercarriage as a whole.

**Dimensions**

Measurements are given as an estimate only. Actual loaded dimensions may vary based on truck/trailer height and the loaded machine configuration/position. It is the buyer's responsibility to measure all loads before leaving our auction site to ensure the load is safe for transport. All measurements should be verified by the buyer. DO NOT rely on these measurements for transportation purposes.



Lot Nr.

56

Date

16 November 2021

**Detail Information**

Location	Dewetsdorp
Year	
Manufacturer	Fiat
Model	640
Asset Type	Tractor
Serial Number or VIN	
Condition	3 - Fair
Hours	
Km's	
Comes with Notes	Nie op pad; Geen papiere



**Operator Station**

Cab Type	
Transmission Detail: Speed	
Transmission Detail: Shift Type	
Differential Lock	Yes
Notes	



**Engine**

Fuel Type	
Manufacturer	
Model	
Notes	

**Rear Options**

Hitch Type	
PTO	Yes
Hydraulic Outlets	No
Notes	



**Body Details**

Size	
Type	
Notes	

**Drive Train**

Notes	
-------	--

**Weights**

Front Wheel Weights	Yes
Back Wheel Weights	No
Front Nose Weights	Yes
Notes	



**Undercarriage/Suspension**

Tyre Manufacturer	Firestone
Front Tyre Size	7.5-16
Rear Tyre Size	14.9-36
Notes	50% Tread

**Accessories**

Other Extensions	
------------------	--

**Functionality Tests**

Start	YES
Drives Forward	YES
Drives Backwards	YES
Brake Pedal Functions	YES

**Supporting Documents**

Certificate of Registration	
Vehicle Licence Certificate	
Service Record	
Other	

Functional Test Notes

--

**General**

The Detailed Equipment Information is limited in scope, and BKB Auctioneers has not inspected any aspects or components of the equipment other than those expressly set forth herein. Unless expressly stated, we make no representations or warranties, express or implied, concerning the equipment or its components, including without limitation any representations or warranties concerning functionality, conformity or compliance with any safety standard or requirement of any applicable authority or regulatory body, fitness for any particular purpose, or merchantability. You are strongly advised to perform your own detailed inspection of the equipment prior to bidding.

**Functions**

The Equipment is not tested under load or operated in all available gears. We make no representation or warranty that equipment is operating in accordance with manufacturers' specifications. No inspection has been performed with respect to any functionality aspect other than those expressly included herein. Only select photos have been provided for individual undercarriage components, and may not be indicative of the condition of the entire undercarriage as a whole.

**Dimensions**

Measurements are given as an estimate only. Actual loaded dimensions may vary based on truck/trailer height and the loaded machine configuration/position. It is the buyer's responsibility to measure all loads before leaving our auction site to ensure the load is safe for transport. All measurements should be verified by the buyer. DO NOT rely on these measurements for transportation purposes.





**Detail Information**

Location	Dewetsdorp
Year	1997
Manufacturer	Welger
Model	D6000
Asset Type	Hay & Forage Equipment
Serial Number or VIN	
Condition	3 - Fair
Hours	
Km's	

Comes with	
Notes	Welger "Big Pack" Baler; Tou Baler

**Operator Station**

Cab Type	
Transmission Detail: Speed	
Transmission Detail: Shift Type	
Differential Lock	
Notes	

**Engine**

Fuel Type	
Manufacturer	
Model	
Notes	

**Rear Options**

Hitch Type	
PTO	
Hydraulic Outlets	
Notes	

**Body Details**

Size	
Type	
Notes	

**Drive Train**

Notes	
-------	--

**Weights**

Front Wheel Weights	
Back Wheel Weights	
Front Nose Weights	
Notes	

**Undercarriage/Suspension**

Tyre Manufacturer	
Front Tyre Size	
Rear Tyre Size	
Notes	

**Accessories**

Other	
Extensions	

**Functionality Tests**

Start	
Drives Forward	
Drives Backwards	
Brake Pedal Functions	

Functional Test Notes

**Supporting Documents**

Certificate of Registration	
Vehicle Licence Certificate	
Service Record	
Other	



**General**

The Detailed Equipment Information is limited in scope, and BKB Auctioneers has not inspected any aspects or components of the equipment other than those expressly set forth herein. Unless expressly stated, we make no representations or warranties, express or implied, concerning the equipment or its components, including without limitation any representations or warranties concerning functionality, conformity or compliance with any safety standard or requirement of any applicable authority or regulatory body, fitness for any particular purpose, or merchantability. You are strongly advised to perform your own detailed inspection of

**Functions**

The equipment is not tested under load or operated in all available gears. We make no representation or warranty that equipment is operating in accordance with manufacturers' specifications. No inspection has been performed with respect to any functionality aspect other than those expressly included herein. Only select photos have been provided for individual undercarriage components, and may not be indicative of the condition of the entire undercarriage as a whole.

**Dimensions**

Measurements are given as an estimate only. Actual loaded dimensions may vary based on truck/trailer height and the loaded machine configuration/position. It is the buyer's responsibility to measure all loads before leaving our auction site to ensure the load is safe for transport. All measurements should be verified by the buyer. DO NOT rely on these measurements for transportation purposes.



SCAN ME #56B

Lot Nr.

57

Date

16 November 2021

**Detail Information**

Location	Dewetsdorp
Year	
Manufacturer	Vetsak
Model	Planter
Asset Type	Seeding and Tillage Equipment
Serial Number or VIN	
Condition	
Hours	
Km's	
Comes with	
Notes	In very poor condition; Koring planter; 9 ry



**Operator Station**

Cab Type	
Transmission Detail: Speed	
Transmission Detail: Shift Type	
Differential Lock	
Notes	



**Engine**

Fuel Type	
Manufacturer	
Model	
Notes	

**Rear Options**

Hitch Type	
PTO	
Hydraulic Outlets	
Notes	



**Body Details**

Size	
Type	
Notes	

**Drive Train**

Notes	
-------	--

**Weights**

Front Wheel Weights	
Back Wheel Weights	
Front Nose Weights	
Notes	

**Undercarriage/Suspension**

Tyre Manufacturer	
Front Tyre Size	
Rear Tyre Size	
Notes	



**Accessories**

Other	
Extensions	

**Functionality Tests**

Start	
Drives Forward	
Drives Backwards	
Brake Pedal Functions	

Functional Test Notes

**Supporting Documents**

Certificate of Registration	
Vehicle Licence Certificate	
Service Record	
Other	

**General**

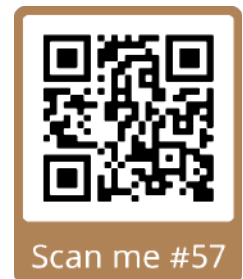
The Detailed Equipment Information is limited in scope, and BKB Auctioneers has not inspected any aspects or components of the equipment other than those expressly set forth herein. Unless expressly stated, we make no representations or warranties, express or implied, concerning the equipment or its components, including without limitation any representations or warranties concerning functionality, conformity or compliance with any safety standard or requirement of any applicable authority or regulatory body, fitness for any particular purpose, or merchantability. You are strongly advised to perform your own detailed inspection of the equipment prior to bidding.

**Functions**

The Equipment is not tested under load or operated in all available gears. We make no representation or warranty that equipment is operating in accordance with manufacturers' specifications. No inspection has been performed with respect to any functionality aspect other than those expressly included herein. Only select photos have been provided for individual undercarriage components, and may not be indicative of the condition of the entire undercarriage as a whole.

**Dimensions**

Measurements are given as an estimate only. Actual loaded dimensions may vary based on truck/trailer height and the loaded machine configuration/position. It is the buyer's responsibility to measure all loads before leaving our auction site to ensure the load is safe for transport. All measurements should be verified by the buyer. DO NOT rely on these measurements for transportation purposes.





Lot Nr.

58

Date

16 November 2021

**Detail Information**

Location	Dewetsdorp
Year	
Manufacturer	Vetsak
Model	Skoffel
Asset Type	Seeding and Tillage Equipment
Serial Number or VIN	
Condition	3 - Fair
Hours	
Km's	
Comes with	
Notes	5 tand



**Operator Station**

Cab Type	
Transmission Detail: Speed	
Transmission Detail: Shift Type	
Differential Lock	
Notes	



**Engine**

Fuel Type	
Manufacturer	
Model	
Notes	

**Rear Options**

Hitch Type	
PTO	
Hydraulic Outlets	
Notes	



**Body Details**

Size	
Type	
Notes	

**Drive Train**

Notes	
-------	--

**Weights**

Front Wheel Weights	
Back Wheel Weights	
Front Nose Weights	
Notes	

**Undercarriage/Suspension**

Tyre Manufacturer	
Front Tyre Size	
Rear Tyre Size	
Notes	



**Accessories**

Other Extensions	
------------------	--

**Functionality Tests**

Start	
Drives Forward	
Drives Backwards	
Brake Pedal Functions	

Functional Test Notes

**Supporting Documents**

Certificate of Registration	
Vehicle Licence Certificate	
Service Record	
Other	

**General**

The Detailed Equipment Information is limited in scope, and BKB Auctioneers has not inspected any aspects or components of the equipment other than those expressly set forth herein. Unless expressly stated, we make no representations or warranties, express or implied, concerning the equipment or its components, including without limitation any representations or warranties concerning functionality, conformity or compliance with any safety standard or requirement of any applicable authority or regulatory body, fitness for any particular purpose, or merchantability. You are strongly advised to perform your own detailed inspection of the equipment prior to bidding.

**Functions**

The Equipment is not tested under load or operated in all available gears. We make no representation or warranty that equipment is operating in accordance with manufacturers' specifications. No inspection has been performed with respect to any functionality aspect other than those expressly included herein. Only select photos have been provided for individual undercarriage components, and may not be indicative of the condition of the entire undercarriage as a whole.

**Dimensions**

Measurements are given as an estimate only. Actual loaded dimensions may vary based on truck/trailer height and the loaded machine configuration/position. It is the buyer's responsibility to measure all loads before leaving our auction site to ensure the load is safe for transport. All measurements should be verified by the buyer. DO NOT rely on these measurements for transportation purposes.



Lot Nr.

59

Date

16 November 2021

**Detail Information**

Location	Dewetsdorp
Year	
Manufacturer	Massey Ferguson
Model	Balkploeg
Asset Type	Seeding and Tillage Equipment
Serial Number or VIN	
Condition	3 - Fair
Hours	
Km's	
Comes with	
Notes	3 Skaar ploeg; Een skaar in stoor



**Operator Station**

Cab Type	
Transmission Detail: Speed	
Transmission Detail: Shift Type	
Differential Lock	
Notes	



**Engine**

Fuel Type	
Manufacturer	
Model	
Notes	

**Rear Options**

Hitch Type	
PTO	
Hydraulic Outlets	
Notes	



**Body Details**

Size	
Type	
Notes	

**Drive Train**

Notes	
-------	--

**Weights**

Front Wheel Weights	
Back Wheel Weights	
Front Nose Weights	
Notes	

**Undercarriage/Suspension**

Tyre Manufacturer	
Front Tyre Size	
Rear Tyre Size	
Notes	

**Accessories**

Other Extensions	
------------------	--

**Functionality Tests**

Start	
Drives Forward	
Drives Backwards	
Brake Pedal Functions	

**Supporting Documents**

Certificate of Registration	
Vehicle Licence Certificate	
Service Record	
Other	

Functional Test Notes

**General**

The Detailed Equipment Information is limited in scope, and BKB Auctioneers has not inspected any aspects or components of the equipment other than those expressly set forth herein. Unless expressly stated, we make no representations or warranties, express or implied, concerning the equipment or its components, including without limitation any representations or warranties concerning functionality, conformity or compliance with any safety standard or requirement of any applicable authority or regulatory body, fitness for any particular purpose, or merchantability. You are strongly advised to perform your own detailed inspection of the equipment prior to bidding.

**Functions**

The Equipment is not tested under load or operated in all available gears. We make no representation or warranty that equipment is operating in accordance with manufacturers' specifications. No inspection has been performed with respect to any functionality aspect other than those expressly included herein. Only select photos have been provided for individual undercarriage components, and may not be indicative of the condition of the entire undercarriage as a whole.

**Dimensions**

Measurements are given as an estimate only. Actual loaded dimensions may vary based on truck/trailer height and the loaded machine configuration/position. It is the buyer's responsibility to measure all loads before leaving our auction site to ensure the load is safe for transport. All measurements should be verified by the buyer. DO NOT rely on these measurements for transportation purposes.





Lot Nr.

60

Date

16 November 2021

**Detail Information**

Location	Dewetsdorp
Year	
Manufacturer	Vetsak
Model	
Asset Type	Seeding and Tillage Equipment
Serial Number or VIN	
Condition	2 - Poor
Hours	
Km's	
Comes with	
Notes	Eenrigting skottel; Goeie toestand; 10 skottels



**Operator Station**

Cab Type	
Transmission Detail: Speed	
Transmission Detail: Shift Type	
Differential Lock	
Notes	



**Engine**

Fuel Type	
Manufacturer	
Model	
Notes	

**Rear Options**

Hitch Type	
PTO	
Hydraulic Outlets	
Notes	

**Body Details**

Size	
Type	
Notes	

**Drive Train**

Notes	
-------	--

**Weights**

Front Wheel Weights	
Back Wheel Weights	
Front Nose Weights	
Notes	

**Undercarriage/Suspension**

Tyre Manufacturer	
Front Tyre Size	
Rear Tyre Size	
Notes	

**Accessories**

Other	
Extensions	



**Functionality Tests**

Start	
Drives Forward	
Drives Backwards	
Brake Pedal Functions	

**Supporting Documents**

Certificate of Registration	
Vehicle Licence Certificate	
Service Record	
Other	

Functional Test Notes

**General**

The Detailed Equipment Information is limited in scope, and BKB Auctioneers has not inspected any aspects or components of the equipment other than those expressly set forth herein. Unless expressly stated, we make no representations or warranties, express or implied, concerning the equipment or its components, including without limitation any representations or warranties concerning functionality, conformity or compliance with any safety standard or requirement of any applicable authority or regulatory body, fitness for any particular purpose, or merchantability. You are strongly advised to perform your own detailed inspection of the equipment prior to bidding.

**Functions**

The Equipment is not tested under load or operated in all available gears. We make no representation or warranty that equipment is operating in accordance with manufacturers' specifications. No inspection has been performed with respect to any functionality aspect other than those expressly included herein. Only select photos have been provided for individual undercarriage components, and may not be indicative of the condition of the entire undercarriage as a whole.

**Dimensions**

Measurements are given as an estimate only. Actual loaded dimensions may vary based on truck/trailer height and the loaded machine configuration/position. It is the buyer's responsibility to measure all loads before leaving our auction site to ensure the load is safe for transport. All measurements should be verified by the buyer. DO NOT rely on these measurements for transportation purposes.



Lot Nr.

61

Date

16 November 2021

**Detail Information**

Location	Dewetsdorp
Year	
Manufacturer	Agrico
Model	Beitelploeg
Asset Type	Seeding and Tillage Equipment
Serial Number or VIN	
Condition	4 - Good
Hours	
Km's	

Comes with	5 meter breed
Notes	Skare (Skottel) nuut; Vlerke tel hidroulies op; 19 tand.



**Operator Station**

Cab Type	
Transmission Detail: Speed	
Transmission Detail: Shift Type	
Differential Lock	
Notes	



**Engine**

Fuel Type	
Manufacturer	
Model	
Notes	

**Rear Options**

Hitch Type	
PTO	
Hydraulic Outlets	
Notes	



**Body Details**

Size	
Type	
Notes	

**Drive Train**

Notes	
-------	--

**Weights**

Front Wheel Weights	
Back Wheel Weights	
Front Nose Weights	
Notes	

**Undercarriage/Suspension**

Tyre Manufacturer	
Front Tyre Size	
Rear Tyre Size	
Notes	



**Accessories**

Other Extensions	
------------------	--

**Functionality Tests**

Start	
Drives Forward	
Drives Backwards	
Brake Pedal Functions	

Functional Test Notes

**Supporting Documents**

Certificate of Registration	
Vehicle Licence Certificate	
Service Record	
Other	

**General**

The Detailed Equipment Information is limited in scope, and BKB Auctioneers has not inspected any aspects or components of the equipment other than those expressly set forth herein. Unless expressly stated, we make no representations or warranties, express or implied, concerning the equipment or its components, including without limitation any representations or warranties concerning functionality, conformity or compliance with any safety standard or requirement of any applicable authority or regulatory body, fitness for any particular purpose, or merchantability. You are strongly advised to perform your own detailed inspection of the equipment prior to bidding.

**Functions**

The Equipment is not tested under load or operated in all available gears. We make no representation or warranty that equipment is operating in accordance with manufacturers' specifications. No inspection has been performed with respect to any functionality aspect other than those expressly included herein. Only select photos have been provided for individual undercarriage components, and may not be indicative of the condition of the entire undercarriage as a whole.

**Dimensions**

Measurements are given as an estimate only. Actual loaded dimensions may vary based on truck/trailer height and the loaded machine configuration/position. It is the buyer's responsibility to measure all loads before leaving our auction site to ensure the load is safe for transport. All measurements should be verified by the buyer. DO NOT rely on these measurements for transportation purposes.





Lot Nr.

62

Date

16 November 2021

**Detail Information**

Location	Dewetsdorp
Year	
Manufacturer	John Deere
Model	Tussenry Skoffel
Asset Type	Seeding and Tillage Equipment
Serial Number or VIN	
Condition	3 - Fair
Hours	
Km's	
Comes with Notes	4-ry; 3 voet



**Operator Station**

Cab Type	
Transmission Detail: Speed	
Transmission Detail: Shift Type	
Differential Lock	
Notes	



**Engine**

Fuel Type	
Manufacturer	
Model	
Notes	

**Rear Options**

Hitch Type	
PTO	
Hydraulic Outlets	
Notes	



**Body Details**

Size	
Type	
Notes	

**Drive Train**

Notes	
-------	--

**Weights**

Front Wheel Weights	
Back Wheel Weights	
Front Nose Weights	
Notes	

**Undercarriage/Suspension**

Tyre Manufacturer	
Front Tyre Size	
Rear Tyre Size	
Notes	

**Accessories**

Other Extensions	
------------------	--

**Functionality Tests**

Start	
Drives Forward	
Drives Backwards	
Brake Pedal Functions	

**Supporting Documents**

Certificate of Registration	
Vehicle Licence Certificate	
Service Record	
Other	

Functional Test Notes

**General**

The Detailed Equipment Information is limited in scope, and BKB Auctioneers has not inspected any aspects or components of the equipment other than those expressly set forth herein. Unless expressly stated, we make no representations or warranties, express or implied, concerning the equipment or its components, including without limitation any representations or warranties concerning functionality, conformity or compliance with any safety standard or requirement of any applicable authority or regulatory body, fitness for any particular purpose, or merchantability. You are strongly advised to perform your own detailed inspection of the equipment prior to bidding.

**Functions**

The Equipment is not tested under load or operated in all available gears. We make no representation or warranty that equipment is operating in accordance with manufacturers' specifications. No inspection has been performed with respect to any functionality aspect other than those expressly included herein. Only select photos have been provided for individual undercarriage components, and may not be indicative of the condition of the entire undercarriage as a whole.

**Dimensions**

Measurements are given as an estimate only. Actual loaded dimensions may vary based on truck/trailer height and the loaded machine configuration/position. It is the buyer's responsibility to measure all loads before leaving our auction site to ensure the load is safe for transport. All measurements should be verified by the buyer. DO NOT rely on these measurements for transportation purposes.



Lot Nr.

63

Date

16 November 2021

**Detail Information**

Location	Dewetsdorp
Year	
Manufacturer	SAFIM
Model	Kontra-Sny eg
Asset Type	
Serial Number or VIN	
Condition	3 - Fair
Hours	
Km's	
Comes with Notes	Skottels kan vervang word 28 skottel offset.



**Operator Station**

Cab Type	
Transmission Detail: Speed	
Transmission Detail: Shift Type	
Differential Lock	
Notes	



**Engine**

Fuel Type	
Manufacturer	
Model	
Notes	

**Rear Options**

Hitch Type	
PTO	
Hydraulic Outlets	
Notes	



**Body Details**

Size	
Type	
Notes	

**Drive Train**

Notes	
-------	--

**Weights**

Front Wheel Weights	
Back Wheel Weights	
Front Nose Weights	
Notes	



**Undercarriage/Suspension**

Tyre Manufacturer	
Front Tyre Size	
Rear Tyre Size	
Notes	

**Accessories**

Other Extensions	
------------------	--

**Functionality Tests**

Start	
Drives Forward	
Drives Backwards	
Brake Pedal Functions	

**Supporting Documents**

Certificate of Registration	
Vehicle Licence Certificate	
Service Record	
Other	

Functional Test Notes

**General**

The Detailed Equipment Information is limited in scope, and BKB Auctioneers has not inspected any aspects or components of the equipment other than those expressly set forth herein. Unless expressly stated, we make no representations or warranties, express or implied, concerning the equipment or its components, including without limitation any representations or warranties concerning functionality, conformity or compliance with any safety standard or requirement of any applicable authority or regulatory body, fitness for any particular purpose, or merchantability. You are strongly advised to perform your own detailed inspection of the equipment prior to bidding.

**Functions**

The Equipment is not tested under load or operated in all available gears. We make no representation or warranty that equipment is operating in accordance with manufacturers' specifications. No inspection has been performed with respect to any functionality aspect other than those expressly included herein. Only select photos have been provided for individual undercarriage components, and may not be indicative of the condition of the entire undercarriage as a whole.

**Dimensions**

Measurements are given as an estimate only. Actual loaded dimensions may vary based on truck/trailer height and the loaded machine configuration/position. It is the buyer's responsibility to measure all loads before leaving our auction site to ensure the load is safe for transport. All measurements should be verified by the buyer. DO NOT rely on these measurements for transportation purposes.





Lot Nr.

64

Date

16 November 2021

**Detail Information**

Location	Dewetsdorp
Year	
Manufacturer	
Model	Kontra-Sny Eg
Asset Type	
Serial Number or VIN	
Condition	2 - Poor
Hours	
Km's	
Comes with	
Notes	3 punt; 22 skottels; Tandem



**Operator Station**

Cab Type	
Transmission Detail: Speed	
Transmission Detail: Shift Type	
Differential Lock	
Notes	



**Engine**

Fuel Type	
Manufacturer	
Model	
Notes	

**Rear Options**

Hitch Type	
PTO	
Hydraulic Outlets	
Notes	

**Body Details**

Size	
Type	
Notes	



**Drive Train**

Notes	
-------	--

**Weights**

Front Wheel Weights	
Back Wheel Weights	
Front Nose Weights	
Notes	

**Undercarriage/Suspension**

Tyre Manufacturer	
Front Tyre Size	
Rear Tyre Size	
Notes	

**Accessories**

Other Extensions	
------------------	--

**Functionality Tests**

Start	
Drives Forward	
Drives Backwards	
Brake Pedal Functions	

**Supporting Documents**

Certificate of Registration	
Vehicle Licence Certificate	
Service Record	
Other	

Functional Test Notes

--

**General**

The Detailed Equipment Information is limited in scope, and BKB Auctioneers has not inspected any aspects or components of the equipment other than those expressly set forth herein. Unless expressly stated, we make no representations or warranties, express or implied, concerning the equipment or its components, including without limitation any representations or warranties concerning functionality, conformity or compliance with any safety standard or requirement of any applicable authority or regulatory body, fitness for any particular purpose, or merchantability. You are strongly advised to perform your own detailed inspection of the equipment prior to bidding.

**Functions**

The Equipment is not tested under load or operated in all available gears. We make no representation or warranty that equipment is operating in accordance with manufacturers' specifications. No inspection has been performed with respect to any functionality aspect other than those expressly included herein. Only select photos have been provided for individual undercarriage components, and may not be indicative of the condition of the entire undercarriage as a whole.

**Dimensions**

Measurements are given as an estimate only. Actual loaded dimensions may vary based on truck/trailer height and the loaded machine configuration/position. It is the buyer's responsibility to measure all loads before leaving our auction site to ensure the load is safe for transport. All measurements should be verified by the buyer. DO NOT rely on these measurements for transportation purposes.



Lot Nr.

65

Date

16 November 2021

**Detail Information**

Location	Dewetsdorp
Year	
Manufacturer	
Model	Awegaar
Asset Type	
Serial Number or VIN	
Condition	2 - Poor
Hours	
Km's	

Comes with	
Notes	Kort n paar bouite; Nie gebruik nie; 3 punt; PTO aangedrewe

**Operator Station**

Cab Type	
Transmission Detail: Speed	
Transmission Detail: Shift Type	
Differential Lock	
Notes	

**Engine**

Fuel Type	
Manufacturer	
Model	
Notes	

**Rear Options**

Hitch Type	
PTO	
Hydraulic Outlets	
Notes	

**Body Details**

Size	
Type	
Notes	

**Drive Train**

Notes	
-------	--

**Weights**

Front Wheel Weights	
Back Wheel Weights	
Front Nose Weights	
Notes	

**Undercarriage/Suspension**

Tyre Manufacturer	
Front Tyre Size	
Rear Tyre Size	
Notes	

**Accessories**

Other	
Extensions	

**Functionality Tests**

Start	
Drives Forward	
Drives Backwards	
Brake Pedal Functions	

Functional Test Notes



**Supporting Documents**

Certificate of Registration	
Vehicle Licence Certificate	
Service Record	
Other	

**General**

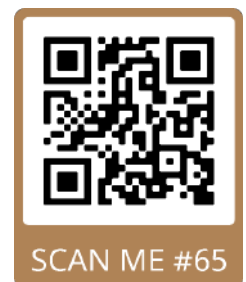
The Detailed Equipment Information is limited in scope, and BKB Auctioneers has not inspected any aspects or components of the equipment other than those expressly set forth herein. Unless expressly stated, we make no representations or warranties, express or implied, concerning the equipment or its components, including without limitation any representations or warranties concerning functionality, conformity or compliance with any safety standard or requirement of any applicable authority or regulatory body, fitness for any particular purpose, or merchantability. You are strongly advised to perform your own detailed inspection of the equipment prior to bidding.

**Functions**

The equipment is not tested under load or operated in all available gears. We make no representation or warranty that equipment is operating in accordance with manufacturers' specifications. No inspection has been performed with respect to any functionality aspect other than those expressly included herein. Only select photos have been provided for individual undercarriage components, and may not be indicative of the condition of the entire undercarriage as a whole.

**Dimensions**

Measurements are given as an estimate only. Actual loaded dimensions may vary based on truck/trailer height and the loaded machine configuration/position. It is the buyer's responsibility to measure all loads before leaving our auction site to ensure the load is safe for transport. All measurements should be verified by the buyer. DO NOT rely on these measurements for transportation purposes.





Lot Nr.

66

Date

16 November 2021

**Detail Information**

Location	Dewetsdorp
Year	
Manufacturer	Krog Awegaar
Model	
Asset Type	
Serial Number or VIN	
Condition	3 - Fair
Hours	
Km's	

Comes with	
Notes	Werkande toestand; Motor - 4 KW (3 - fase); Werk met motor of PTO; 7 meter.



**Operator Station**

Cab Type	
Transmission Detail: Speed	
Transmission Detail: Shift Type	
Differential Lock	
Notes	



**Engine**

Fuel Type	
Manufacturer	
Model	
Notes	

**Rear Options**

Hitch Type	
PTO	
Hydraulic Outlets	
Notes	



**Body Details**

Size	
Type	
Notes	

**Drive Train**

Notes	
-------	--

**Weights**

Front Wheel Weights	
Back Wheel Weights	
Front Nose Weights	
Notes	

**Undercarriage/Suspension**

Tyre Manufacturer	
Front Tyre Size	
Rear Tyre Size	
Notes	



**Accessories**

Other	
Extensions	

**Functionality Tests**

Start	
Drives Forward	
Drives Backwards	
Brake Pedal Functions	

Functional Test Notes

**Supporting Documents**

Certificate of Registration	
Vehicle Licence Certificate	
Service Record	
Other	

**General**

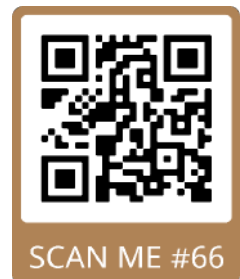
The Detailed Equipment Information is limited in scope, and BKB Auctioneers has not inspected any aspects or components of the equipment other than those expressly set forth herein. Unless expressly stated, we make no representations or warranties, express or implied, concerning the equipment or its components, including without limitation any representations or warranties concerning functionality, conformity or compliance with any safety standard or requirement of any applicable authority or regulatory body, fitness for any particular purpose, or merchantability. You are strongly advised to perform your own detailed inspection of the equipment prior to bidding.

**Functions**

The equipment is not tested under load or operated in all available gears. We make no representation or warranty that equipment is operating in accordance with manufacturers' specifications. No inspection has been performed with respect to any functionality aspect other than those expressly included herein. Only select photos have been provided for individual undercarriage components, and may not be indicative of the condition of the entire undercarriage as a whole.

**Dimensions**

Measurements are given as an estimate only. Actual loaded dimensions may vary based on truck/trailer height and the loaded machine configuration/position. It is the buyer's responsibility to measure all loads before leaving our auction site to ensure the load is safe for transport. All measurements should be verified by the buyer. DO NOT rely on these measurements for transportation purposes.





Lot Nr.

67

Date

16 November 2021

**Detail Information**

Location	Dewetsdorp
Year	
Manufacturer	Littleston
Model	Tussenry Skoffel
Asset Type	Seeding and Tillage Equipment
Serial Number or VIN	
Condition	3 - Fair
Hours	
Km's	
Comes with	
Notes	8 Karretjies



**Operator Station**

Cab Type	
Transmission Detail: Speed	
Transmission Detail: Shift Type	
Differential Lock	
Notes	



**Engine**

Fuel Type	
Manufacturer	
Model	
Notes	

**Rear Options**

Hitch Type	
PTO	
Hydraulic Outlets	
Notes	



**Body Details**

Size	
Type	
Notes	

**Drive Train**

Notes	
-------	--

**Weights**

Front Wheel Weights	
Back Wheel Weights	
Front Nose Weights	
Notes	

**Undercarriage/Suspension**

Tyre Manufacturer	
Front Tyre Size	
Rear Tyre Size	
Notes	



**Accessories**

Other	
Extensions	

**Functionality Tests**

Start	
Drives Forward	
Drives Backwards	
Brake Pedal Functions	

Functional Test Notes

**Supporting Documents**

Certificate of Registration	
Vehicle Licence Certificate	
Service Record	
Other	

**General**

The Detailed Equipment Information is limited in scope, and BKB Auctioneers has not inspected any aspects or components of the equipment other than those expressly set forth herein. Unless expressly stated, we make no representations or warranties, express or implied, concerning the equipment or its components, including without limitation any representations or warranties concerning functionality, conformity or compliance with any safety standard or requirement of any applicable authority or regulatory body, fitness for any particular purpose, or merchantability. You are strongly advised to perform your own detailed inspection of the equipment prior to bidding.

**Functions**

The Equipment is not tested under load or operated in all available gears. We make no representation or warranty that equipment is operating in accordance with manufacturers' specifications. No inspection has been performed with respect to any functionality aspect other than those expressly included herein. Only select photos have been provided for individual undercarriage components, and may not be indicative of the condition of the entire undercarriage as a whole.

**Dimensions**

Measurements are given as an estimate only. Actual loaded dimensions may vary based on truck/trailer height and the loaded machine configuration/position. It is the buyer's responsibility to measure all loads before leaving our auction site to ensure the load is safe for transport. All measurements should be verified by the buyer. DO NOT rely on these measurements for transportation purposes.





Lot Nr.

68

Date

16 November 2021

**Detail Information**

Location	Dewetsdorp
Year	
Manufacturer	Agrico Big OX
Model	Grondbreker
Asset Type	Seeding and Tillage Equipment
Serial Number or VIN	
Condition	3 - Fair
Hours	
Km's	
Comes with	
Notes	5 tand; V ripper; swaardiens



**Operator Station**

Cab Type	
Transmission Detail: Speed	
Transmission Detail: Shift Type	
Differential Lock	
Notes	



**Engine**

Fuel Type	
Manufacturer	
Model	
Notes	

**Rear Options**

Hitch Type	
PTO	
Hydraulic Outlets	
Notes	



**Body Details**

Size	
Type	
Notes	

**Drive Train**

Notes	
-------	--

**Weights**

Front Wheel Weights	
Back Wheel Weights	
Front Nose Weights	
Notes	

**Undercarriage/Suspension**

Tyre Manufacturer	
Front Tyre Size	
Rear Tyre Size	
Notes	



**Accessories**

Other Extensions	
------------------	--

**Functionality Tests**

Start	
Drives Forward	
Drives Backwards	
Brake Pedal Functions	

Functional Test Notes

**Supporting Documents**

Certificate of Registration	
Vehicle Licence Certificate	
Service Record	
Other	

**General**

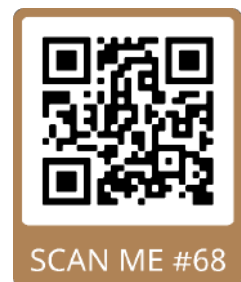
The Detailed Equipment Information is limited in scope, and BKB Auctioneers has not inspected any aspects or components of the equipment other than those expressly set forth herein. Unless expressly stated, we make no representations or warranties, express or implied, concerning the equipment or its components, including without limitation any representations or warranties concerning functionality, conformity or compliance with any safety standard or requirement of any applicable authority or regulatory body, fitness for any particular purpose, or merchantability. You are strongly advised to perform your own detailed inspection of the equipment prior to bidding.

**Functions**

The Equipment is not tested under load or operated in all available gears. We make no representation or warranty that equipment is operating in accordance with manufacturers' specifications. No inspection has been performed with respect to any functionality aspect other than those expressly included herein. Only select photos have been provided for individual undercarriage components, and may not be indicative of the condition of the entire undercarriage as a whole.

**Dimensions**

Measurements are given as an estimate only. Actual loaded dimensions may vary based on truck/trailer height and the loaded machine configuration/position. It is the buyer's responsibility to measure all loads before leaving our auction site to ensure the load is safe for transport. All measurements should be verified by the buyer. DO NOT rely on these measurements for transportation purposes.



Lot Nr.

69

Date

16 November 2021

**Detail Information**

Location	Dewetsdorp
Year	
Manufacturer	LM
Model	
Asset Type	
Serial Number or VIN	
Condition	3 - Fair
Hours	
Km's	
Comes with	
Notes	Kalkstrooier; 3.5 meter



**Operator Station**

Cab Type	
Transmission Detail: Speed	
Transmission Detail: Shift Type	
Differential Lock	
Notes	



**Engine**

Fuel Type	
Manufacturer	
Model	
Notes	

**Rear Options**

Hitch Type	
PTO	
Hydraulic Outlets	
Notes	



**Body Details**

Size	
Type	
Notes	

**Drive Train**

Notes	
-------	--

**Weights**

Front Wheel Weights	
Back Wheel Weights	
Front Nose Weights	
Notes	



**Undercarriage/Suspension**

Tyre Manufacturer	
Front Tyre Size	
Rear Tyre Size	
Notes	

**Accessories**

Other	
Extensions	

**Functionality Tests**

Start	
Drives Forward	
Drives Backwards	
Brake Pedal Functions	

**Supporting Documents**

Certificate of Registration	
Vehicle Licence Certificate	
Service Record	
Other	

Functional Test Notes

**General**

The Detailed Equipment Information is limited in scope, and BKB Auctioneers has not inspected any aspects or components of the equipment other than those expressly set forth herein. Unless expressly stated, we make no representations or warranties, express or implied, concerning the equipment or its components, including without limitation any representations or warranties concerning functionality, conformity or compliance with any safety standard or requirement of any applicable authority or regulatory body, fitness for any particular purpose, or merchantability. You are strongly advised to perform your own detailed inspection of the equipment prior to bidding.

**Functions**

The Equipment is not tested under load or operated in all available gears. We make no representation or warranty that equipment is operating in accordance with manufacturers' specifications. No inspection has been performed with respect to any functionality aspect other than those expressly included herein. Only select photos have been provided for individual undercarriage components, and may not be indicative of the condition of the entire undercarriage as a whole.

**Dimensions**

Measurements are given as an estimate only. Actual loaded dimensions may vary based on truck/trailer height and the loaded machine configuration/position. It is the buyer's responsibility to measure all loads before leaving our auction site to ensure the load is safe for transport. All measurements should be verified by the buyer. DO NOT rely on these measurements for transportation purposes.





Lot Nr.

70

Date

16 November 2021

**Detail Information**

Location	Dewetsdorp
Year	
Manufacturer	LM
Model	Balkploeg
Asset Type	Seeding and Tillage Equipment
Serial Number or VIN	
Condition	3 - Fair
Hours	
Km's	
Comes with	
Notes	Ploeg 5 Skaar



**Operator Station**

Cab Type	
Transmission Detail: Speed	
Transmission Detail: Shift Type	
Differential Lock	
Notes	



**Engine**

Fuel Type	
Manufacturer	
Model	
Notes	

**Rear Options**

Hitch Type	
PTO	
Hydraulic Outlets	
Notes	



**Body Details**

Size	
Type	
Notes	

**Drive Train**

Notes	
-------	--

**Weights**

Front Wheel Weights	
Back Wheel Weights	
Front Nose Weights	
Notes	

**Undercarriage/Suspension**

Tyre Manufacturer	
Front Tyre Size	
Rear Tyre Size	
Notes	



**Accessories**

Other	
Extensions	

**Functionality Tests**

Start	
Drives Forward	
Drives Backwards	
Brake Pedal Functions	

Functional Test Notes

**Supporting Documents**

Certificate of Registration	
Vehicle Licence Certificate	
Service Record	
Other	

**General**

The Detailed Equipment Information is limited in scope, and BKB Auctioneers has not inspected any aspects or components of the equipment other than those expressly set forth herein. Unless expressly stated, we make no representations or warranties, express or implied, concerning the equipment or its components, including without limitation any representations or warranties concerning functionality, conformity or compliance with any safety standard or requirement of any applicable authority or regulatory body, fitness for any particular purpose, or merchantability. You are strongly advised to perform your own detailed inspection of the equipment prior to bidding.

**Functions**

The Equipment is not tested under load or operated in all available gears. We make no representation or warranty that equipment is operating in accordance with manufacturers' specifications. No inspection has been performed with respect to any functionality aspect other than those expressly included herein. Only select photos have been provided for individual undercarriage components, and may not be indicative of the condition of the entire undercarriage as a whole.

**Dimensions**

Measurements are given as an estimate only. Actual loaded dimensions may vary based on truck/trailer height and the loaded machine configuration/position. It is the buyer's responsibility to measure all loads before leaving our auction site to ensure the load is safe for transport. All measurements should be verified by the buyer. DO NOT rely on these measurements for transportation purposes.



**Detail Information**

Location	Dewetsdorp
Year	
Manufacturer	Pomp KSB ETA 18-33
Model	
Asset Type	Other Agri Equipment
Serial Number or VIN	
Condition	3 - Fair
Hours	
Km's	

Comes with  
Notes

Vloedpomp KSB ETA 18-33 (Pomp); Motor 18,5KW; Induksie motor; 25 meter Elektriese Kabel; 380 V 3-Fase; Goeie werkende toestand

**Operator Station**

Cab Type	
Transmission Detail: Speed	
Transmission Detail: Shift Type	
Differential Lock	
Notes	

**Engine**

Fuel Type	
Manufacturer	
Model	
Notes	

**Rear Options**

Hitch Type	
PTO	
Hydraulic Outlets	
Notes	

**Body Details**

Size	
Type	
Notes	

**Drive Train**

Notes	
-------	--

**Weights**

Front Wheel Weights	
Back Wheel Weights	
Front Nose Weights	
Notes	

**Undercarriage/Suspension**

Tyre Manufacturer	
Front Tyre Size	
Rear Tyre Size	
Notes	

**Accessories**

Other Extensions	
------------------	--

**Functionality Tests**

Start	
Drives Forward	
Drives Backwards	
Brake Pedal Functions	

Functional Test Notes

--



**Supporting Documents**

Certificate of Registration	
Vehicle Licence Certificate	
Service Record	
Other	

**General**

The Detailed Equipment Information is limited in scope, and BKB Auctioneers has not inspected any aspects or components of the equipment other than those expressly set forth herein. Unless expressly stated, we make no representations or warranties, express or implied, concerning the equipment or its components, including without limitation any representations or warranties concerning functionality, conformity or compliance with any safety standard or requirement of any applicable authority or regulatory body, fitness for any particular purpose, or merchantability. You are strongly advised to perform your own detailed

**Functions**

The Equipment is not tested under load or operated in all available gears. We make no representation or warranty that equipment is operating in accordance with manufacturers' specifications. No inspection has been performed with respect to any functionality aspect other than those expressly included herein. Only select photos have been provided for individual undercarriage components, and may not be indicative of the condition of the entire undercarriage as a whole.

**Dimensions**

Measurements are given as an estimate only. Actual loaded dimensions may vary based on truck/trailer height and the loaded machine configuration/position. It is the buyer's responsibility to measure all loads before leaving our auction site to ensure the load is safe for transport. All measurements should be verified by the buyer. DO NOT rely on these measurements for transportation purposes.



SCAN ME #71



**Detail Information**

Location	Dewetsdorp
Year	2018
Manufacturer	Agrional
Model	
Asset Type	Hay & Forage Equipment
Serial Number or VIN	184124
Condition	3 - Fair
Hours	
Km's	
Comes with	
Notes	Snyer (Lusern Drom Snyer); 3 punt; 2 tol



**Operator Station**

Cab Type	
Transmission Detail: Speed	
Transmission Detail: Shift Type	
Differential Lock	
Notes	



**Engine**

Fuel Type	
Manufacturer	
Model	
Notes	

**Rear Options**

Hitch Type	
PTO	
Hydraulic Outlets	
Notes	



**Body Details**

Size	
Type	
Notes	

**Drive Train**

Notes	
-------	--

**Weights**

Front Wheel Weights	
Back Wheel Weights	
Front Nose Weights	
Notes	

**Undercarriage/Suspension**

Tyre Manufacturer	
Front Tyre Size	
Rear Tyre Size	
Notes	

**Accessories**

Other	
Extensions	

**Functionality Tests**

Start	
Drives Forward	
Drives Backwards	
Brake Pedal Functions	

**Supporting Documents**

Certificate of Registration	
Vehicle Licence Certificate	
Service Record	
Other	

Functional Test Notes

--

**General**

The Detailed Equipment Information is limited in scope, and BKB Auctioneers has not inspected any aspects or components of the equipment other than those expressly set forth herein. Unless expressly stated, we make no representations or warranties, express or implied, concerning the equipment or its components, including without limitation any representations or warranties concerning functionality, conformity or compliance with any safety standard or requirement of any applicable authority or regulatory body, fitness for any particular purpose, or merchantability. You are strongly advised to perform your own detailed

**Functions**

The Equipment is not tested under load or operated in all available gears. We make no representation or warranty that equipment is operating in accordance with manufacturers' specifications. No inspection has been performed with respect to any functionality aspect other than those expressly included herein. Only select photos have been provided for individual undercarriage components, and may not be indicative of the condition of the entire undercarriage as a whole.

**Dimensions**

Measurements are given as an estimate only. Actual loaded dimensions may vary based on truck/trailer height and the loaded machine configuration/position. It is the buyer's responsibility to measure all loads before leaving our auction site to ensure the load is safe for transport. All measurements should be verified by the buyer. DO NOT rely on these measurements for transportation purposes.



**Detail Information**

Location	Dewetsdorp
Year	
Manufacturer	
Model	
Asset Type	Seeding and Tillage Equipment
Serial Number or VIN	
Condition	3 - Fair
Hours	
Km's	
Comes with	
Notes	Skottel (Cultivar) 6-tand



**Operator Station**

Cab Type	
Transmission Detail: Speed	
Transmission Detail: Shift Type	
Differential Lock	
Notes	



**Engine**

Fuel Type	
Manufacturer	
Model	
Notes	

**Rear Options**

Hitch Type	
PTO	
Hydraulic Outlets	
Notes	



**Body Details**

Size	
Type	
Notes	

**Drive Train**

Notes	
-------	--

**Weights**

Front Wheel Weights	
Back Wheel Weights	
Front Nose Weights	
Notes	

**Undercarriage/Suspension**

Tyre Manufacturer	
Front Tyre Size	
Rear Tyre Size	
Notes	

**Accessories**

Other	
Extensions	

**Functionality Tests**

Start	
Drives Forward	
Drives Backwards	
Brake Pedal Functions	

**Supporting Documents**

Certificate of Registration	
Vehicle Licence Certificate	
Service Record	
Other	

Functional Test Notes

--

**General**

The Detailed Equipment Information is limited in scope, and BKB Auctioneers has not inspected any aspects or components of the equipment other than those expressly set forth herein. Unless expressly stated, we make no representations or warranties, express or implied, concerning the equipment or its components, including without limitation any representations or warranties concerning functionality, conformity or compliance with any safety standard or requirement of any applicable authority or regulatory body, fitness for any particular purpose, or merchantability. You are strongly advised to perform your own detailed

**Functions**

The Equipment is not tested under load or operated in all available gears. We make no representation or warranty that equipment is operating in accordance with manufacturers' specifications. No inspection has been performed with respect to any functionality aspect other than those expressly included herein. Only select photos have been provided for individual undercarriage components, and may not be indicative of the condition of the entire undercarriage as a whole.

**Dimensions**

Measurements are given as an estimate only. Actual loaded dimensions may vary based on truck/trailer height and the loaded machine configuration/position. It is the buyer's responsibility to measure all loads before leaving our auction site to ensure the load is safe for transport. All measurements should be verified by the buyer. DO NOT rely on these measurements for transportation purposes.





**Detail Information**

Location	Dewetsdorp
Year	2020
Manufacturer	Kverneland
Model	CLC Grondbreker
Asset Type	Tractor Attachments
Serial Number or VIN	
Condition	5 - Very Good
Hours	
Km's	
Comes with	
Notes	9 Tand CLC-2 met saadroller; Amper nuut



**Operator Station**

Cab Type	
Transmission Detail: Speed	
Transmission Detail: Shift Type	
Differential Lock	
Notes	

**Engine**

Fuel Type	
Manufacturer	
Model	
Notes	

**Rear Options**

Hitch Type	
PTO	
Hydraulic Outlets	
Notes	

**Body Details**

Size	
Type	
Notes	

**Drive Train**

Notes	
-------	--

**Weights**

Front Wheel Weights	
Back Wheel Weights	
Front Nose Weights	
Notes	

**Undercarriage/Suspension**

Tyre Manufacturer	
Front Tyre Size	
Rear Tyre Size	
Notes	

**Accessories**

Other	
Extensions	

**Functionality Tests**

Start	
Drives Forward	
Drives Backwards	
Brake Pedal Functions	

Functional Test Notes

--

**Supporting Documents**

Certificate of Registration	
Vehicle Licence Certificate	
Service Record	
Other	

**General**

The Detailed Equipment Information is limited in scope, and BKB Auctioneers has not inspected any aspects or components of the equipment other than those expressly set forth herein. Unless expressly stated, we make no representations or warranties, express or implied, concerning the equipment or its components, including without limitation any representations or warranties concerning functionality, conformity or compliance with any safety standard or requirement of any applicable authority or regulatory body, fitness for any particular purpose, or merchantability. You are strongly advised to perform your own detailed

**Functions**

The Equipment is not tested under load or operated in all available gears. We make no representation or warranty that equipment is operating in accordance with manufacturers' specifications. No inspection has been performed with respect to any functionality aspect other than those expressly included herein. Only select photos have been provided for individual undercarriage components, and may not be indicative of the condition of the entire undercarriage as a whole.

**Dimensions**

Measurements are given as an estimate only. Actual loaded dimensions may vary based on truck/trailer height and the loaded machine configuration/position. It is the buyer's responsibility to measure all loads before leaving our auction site to ensure the load is safe for transport. All measurements should be verified by the buyer. DO NOT rely on these measurements for transportation purposes.



Lot Nr.

75

Date

16 November 2021

**Detail Information**

Location	Dewetsdorp
Year	2020
Manufacturer	Kverneland
Model	CLC Grondbreker
Asset Type	Tractor Attachments
Serial Number or VIN	
Condition	5 - Very Good
Hours	
Km's	
Comes with	
Notes	13 Tand CLC-2 met saadroller; Amper nuut

**Operator Station**

Cab Type	
Transmission Detail: Speed	
Transmission Detail: Shift Type	
Differential Lock	
Notes	

**Engine**

Fuel Type	
Manufacturer	
Model	
Notes	

**Rear Options**

Hitch Type	
PTO	
Hydraulic Outlets	
Notes	

**Body Details**

Size	
Type	
Notes	

**Drive Train**

Notes	
-------	--

**Weights**

Front Wheel Weights	
Back Wheel Weights	
Front Nose Weights	
Notes	

**Undercarriage/Suspension**

Tyre Manufacturer	
Front Tyre Size	
Rear Tyre Size	
Notes	

**Accessories**

Other	
Extensions	

**Functionality Tests**

Start	
Drives Forward	
Drives Backwards	
Brake Pedal Functions	

Functional Test Notes

**Supporting Documents**

Certificate of Registration	
Vehicle Licence Certificate	
Service Record	
Other	

**General**

The Detailed Equipment Information is limited in scope, and BKB Auctioneers has not inspected any aspects or components of the equipment other than those expressly set forth herein. Unless expressly stated, we make no representations or warranties, express or implied, concerning the equipment or its components, including without limitation any representations or warranties concerning functionality, conformity or compliance with any safety standard or requirement of any applicable authority or regulatory body, fitness for any particular purpose, or merchantability. You are strongly advised to perform your own detailed

**Functions**

The Equipment is not tested under load or operated in all available gears. We make no representation or warranty that equipment is operating in accordance with manufacturers' specifications. No inspection has been performed with respect to any functionality aspect other than those expressly included herein. Only select photos have been provided for individual undercarriage components, and may not be indicative of the condition of the entire undercarriage as a whole.

**Dimensions**

Measurements are given as an estimate only. Actual loaded dimensions may vary based on truck/trailer height and the loaded machine configuration/position. It is the buyer's responsibility to measure all loads before leaving our auction site to ensure the load is safe for transport. All measurements should be verified by the buyer. DO NOT rely on these measurements for transportation purposes.



SCAN ME #75



**RULES OF BKB DIGITAL AUCTIONS.**  
**TERMS AND CONDITIONS FOR ONLINE AUCTION PLATFORMS**

These rules of auctions is applicable to all digital auctions held under the control of either BKB Limited, registration number 1998/012435/06 with business These terms and conditions apply to all on line bidding at auction sales conducted.

**1. Applicable Law**

- 1.1 The auction will be governed by the Laws of the Republic of South Africa
- 1.2 The rules of this auction complies with section 45 of the Consumer Protection Act 68 of 2008 (CPA) and Section 43(1) of the Electronic Communications and Transactions Act 25 of 2002. (ECTA). For more information go to <http://www.legalrights.co.za/wp-content/uploads/2017/03/CONSUMER-PROTECTION-ACT-NO.-68-OF-2008.pdf> or [https://www.gov.za/sites/default/files/gcis\\_document/201409/a25-02.pdf](https://www.gov.za/sites/default/files/gcis_document/201409/a25-02.pdf)
- 1.3 Section 44(1) of the ECTA affording purchasers a cooling off period does not apply to online auctions.
- 1.4 All persons, when registering as a bidder must, in doing so, comply with Chapter 1 of the Financial Intelligence Centre Act (FICA)
- 1.5 The Auctioneer is hereby appointed by the Purchaser and Seller to act for and on behalf of the Purchaser and Seller as agent in accordance with Section 54 of the Value-Added Tax Act, 1991, in respect of all tax invoices, credit and/or debit notes in respect of all livestock, game and/or goods offered at the auction or any costs of transport and insurances premiums paid for on behalf of the Purchaser and Seller.

**2. Bidder Registration and pre-inspection of goods and/or livestock**

- 2.1. Any person who wishes to bid on the auction must register as a bidder online and in doing so comply with Chapter 1 of FICA. For more information on the requirements set out in FICA go to [https://www.fic.gov.za/Documents/FIC%20Act%20with%202017%20amendments%20\(1\)%20\(1\).pdf](https://www.fic.gov.za/Documents/FIC%20Act%20with%202017%20amendments%20(1)%20(1).pdf)
- 2.2. The online auction service is only available to legal and natural persons who can enter into legally binding contract under the laws of South Africa. Without derogating from the generality thereof, the auction services are not available to minors.
- 2.3. Any person registering as a bidder online is deemed to be the principle contracting party and no person will be allowed to register as an agent of a third party unless with the consent of the Auctioneer.
- 2.4. By registering online as a bidder, the bidder consents to the collection and use of personal information by the Auctioneer for the purposes of creating the registration, and participation in the online auction.
- 2.5. In the event that the Auctioneer consents to an agent registering on behalf of a principle then in that event such a person together with his principal must both register online prior to the auction and provide all necessary information as required in Chapter 1 of the regulations issued in terms of FICA 2001 with regard to proof of the principle's identity.
- 2.6. Where the bidder is a company the person completing the online registration must be duly authorised by resolution of the company to register as a purchaser and shall upload a certified copy of the resolution. (For purposes of this rule any reference to a company will include any reference to juristic person including partnerships, trusts or incorporated entities).
- 2.7. Once registered bidders must keep their account details confidential and must not permit third parties to use or access their account as purchasers will remain liable for all bids entered via their account online.
- 2.8. The final auction catalogue will be available online at least 24hrs before the commencement date and time of the auction.
- 2.9. Bidders who wish to inspect the various lots which will be presented at the auction, may inspect such lots online or at the seller's premises at a time and date specified on the Auctioneer website.
- 2.10. All livestock, game and goods are sold "voetstoots" and the purchasers do not enjoy the protection of Section 55 and 56 of the Consumer Protection Act.
- 2.11. Any information provided regarding the quality, breeding, age, date of insemination, condition, reproductive status or any information regarding health, production or mass or any other aspect of the livestock and/or game, is provided by the seller and any misrepresentation by the seller is without the cooperation or knowledge of the Auctioneer. Any right of recourse as a result of such misrepresentation shall be against the seller.

**3. Bidding Procedure**

- 3.1. The auction shall take place at the date and time as advertised or published and will not be postponed or delayed to enable any member or group of the public to partake in the auction.
- 3.2. The auction is not an absolute auction but subject to reserved prices settled by the sellers and as pointed out by the Auctioneer prior to the sale of the said asset or lot.
- 3.3. Should the Auctioneer become aware of any fault on advertising material or any other publication or amendment to these Rules of Auction, the Auctioneer will prior to the auction point out and when necessary amend such mistakes in the advertisement or publication.
- 3.4. Any bid made does not include VAT which, where applicable, will be added to the bidding price for which a VAT invoice will be issued.
- 3.5. During a sale for which the bidder has registered, the bidder can bid for a lot by clicking on the bid button.
- 3.6. The current bid will be displayed on the bidder's screen during the sale.
- 3.7. Until the fall of the hammer as contemplated in section 45(3) of CPA, any bid may be retracted or declined by the Auctioneer if not compliant with the CPA or the regulations issued in terms thereof.
- 3.8. The bidder acknowledge that he/she are bidding at a live auction and agree that each bid entered (unless withdrawn before the fall of the hammer) is binding even if submitted in error. The bidder accepts full responsibility for every bid submitted through his/her online bidding account.
- 3.9. Each lot is regarded as a separate sale transaction.
- 3.10. Each lot or animal will be presented for sale at the auctioned on a Rand per Kilogram basis and bidders will enter bids reflecting prices per kilogram
- 3.11. The sale by auction is complete at the fall of the hammer or any other practice through which the Auctioneer recognizes the highest bidder as the purchaser.
- 3.12. In the event of the highest bid being tied, the earliest bid received or recognised wins.
- 3.13. The Auctioneer reserves the right to reject a registration on line, may withdraw permission for the use of the online auction service for whatsoever reason before or during the sale.

**4. Payment arrangements**

- 4.1. The final weight in kilograms of each lot or animal (as the case may be) will be established at the time the purchaser collects and take delivery thereof (the delivery weight).
- 4.2. Upon delivery and establishment of the delivery weight, the Auctioneer will provide an invoice to the purchaser reflecting the final purchase price of the specific lot or animal calculated on the successful bid price per kilogram times the delivery weight.
- 4.3. All sales are for cash and purchase price is payable by electronic funds transfer (EFT) immediately to the Auctioneer on acceptance of the bid unless the purchaser has an approved credit facility with the Auctioneer. Any payment made in cash is further subject to cash or any other handling fees. Should the Purchaser however fail to make payment within 7 days from date of delivery, BKB will be entitled to add interest calculated at the current bank prime rate plus 5% to the capital amount outstanding. The interest will be calculated monthly and capitalised.
- 4.4. Should the purchaser not pay the purchase price immediately and has failed to make arrangements for payment with the Auctioneer, then the Auctioneer can/will cancel the sale and treat the assets or lots as unsold lots which may again be presented on the auction for sale or be sold out of hand by means of liaison services, depending on the seller's mandate to the auctioneer.

- 4.5. In the event that Purchaser has made necessary finance arrangements with BKB, the Purchaser hereby authorises BKB to pay the purchase price or costs of transport, insurance and any other agreed cost, minus BKB's commissions, on behalf of the Purchaser to the Seller and other service providers, in which event the said payment by BKB on behalf of the Purchaser will be deemed to be monies lent and advanced, the terms and conditions thereof being agreed with the Purchaser in a separate credit agreement or sale agreement. All payments made by BKB to the Seller on behalf of the Purchaser in terms of this clause will be made after the lapse of 5 (Five) working days from date of delivery of the asset to the Purchaser. Any payment made by BKB to the Seller prior to the lapse of the 5 (Five) working day period is made at the sole discretion of BKB and not an enforceable indulgence.
- 4.6. In the event of payments made on behalf of the purchaser by BKB as contemplated in clause 6.5 above, the purchaser acknowledges herewith being indebted to BKB for the invoiced amount.

**5. Ownership and risk in the sold goods.**

- 5.1. Ownership in the lot or assets will remain that of the seller until the purchase price has been paid in full to the seller.
- 5.2. Risk in the lot or assets passes to the purchaser (the highest bidder) at the time of the Auctioneer notifies the purchaser of the acceptance of his/her bid
- 5.3. For as long as any amount is owing to BKB by the Purchaser, the Purchaser may not, where the assets are the subject of security of the Purchaser's credit facility with BKB, relinquish possession of the said asset, nor may he cede the asset or any of its rights and obligations in terms of this agreement to a third party or otherwise encumber, sell or dispossess the said asset or allow it to become the subject of any right of retention, hypothec, pledge or any encumbrance, whatever the cause thereof may be. BKB may be entitled to cede its rights and obligations without affecting its rights of recourse for any monies still due to it.
- 5.4. In the event of the Seller already being indebted to BKB or any of its affiliates at the time of this auction, the Seller hereby irrevocably authorises BKB to set off the purchase price due to the Seller by BKB (minus BKB's commission) against the amounts due by the Seller to BKB.
- 5.5. Where BKB, in terms of a credit agreement, lent and advanced monies to the Purchaser for payment of the purchase price of any asset or payment of any transport costs or insurance premiums, no defence of whatsoever nature which the Purchaser may raise against the Seller or the transport contractor or the insurance company may be raised against BKB and the Purchaser shall still be obligated to pay all amounts owing, together with further interest and costs thereon raised in terms of the credit agreement or sale agreement, to be BKB. The conditions of this clause do not interfere with the rights, entitlements or remedies the Purchaser may have against the Seller, transport contractor or insurance company.
- 5.6. Neither the Purchaser, nor the Seller, shall be entitled to apply set-off or to retain any monies owing arising from any claim they may have against each other or BKB with regards to any amount owing in terms hereof.

**6. Removal and Risk**

- 6.1. Each lot shall immediately after the date of notification by the Auctioneers to the purchaser of acceptance of his/her bid deemed to be delivered to the purchaser at the address of the seller at which time the risk will pass to the purchaser who will at his own risk and cost remove the lots or assets from the Sellers premises or auction terrain.
- 6.2. Removal of any assets or lots however will not be allowed by the Auctioneer until payment of the purchase price by the purchaser or acceptable arrangements for payment thereof have been made by the purchaser with the Auctioneer.
- 6.3. BKB will not accept liability for any loss or damage to the goods or livestock as a result of the purchasers failure to make adequate and timeous arrangements for the removal of the livestock or goods.
- 6.4. Under no circumstances will BKB be held liable for any loss or damage of any cause whatsoever albeit direct or indirect damages suffered by anyone if the livestock and/or game at the auction premises have to be placed under quarantine as a result of the presence of a livestock and/or game disease present. In such event BKB will have the right to cancel the auction as well as any already complete sales and no party will be entitled or have a right of recourse against BKB.
- 6.5. Any party requiring permits, removal certificate, documentation of identification or any other statutory prescribed document will solely be responsible for obtaining same. Any instructions to an auctioneer with regards to the loading, transporting, choice of transport contractors, insurance or choice of insurers will be executed at the sole risk of the person acquiring such services and the Auctioneer will not be held responsible for any losses whether direct or indirect which may be suffered as a result of giving affect to the instructions by the Auctioneer.
- 6.6. Any agreement entered into by the Auctioneer with a transport company or insurer is done so in its representative capacity of the seller or purchaser. All transport costs or insurance premiums are therefore payable to the Auctioneer in cash except if acceptable alternative arrangements were made with the Auctioneer

**7. Limitation of Liability**

- 7.1. Notwithstanding the section 43 of ECTA, under no circumstances will BKB, its affiliates or subsidiaries, or any shareholders of BKB and its subsidiaries, officers, directors, employees or agents be liable for any loss or damage caused by:
- 7.1.1. The bidder's reliance on information obtained through either the content or the services, or
- 7.1.2. by being exposed to information contained on the site, or
- 7.1.3. the defamatory, offensive or illegal conduct of other users or third parties or
- 7.1.4. the use or inability to use the website or the services or content provided from or through the website or
- 7.1.5. any disruption in the internet connection resulting in the bidder being disconnected from the online auction for whatsoever reason or
- 7.1.6. the failure to record a bid as a result of being disconnected or the online platform going offline during the auction process.
- 7.2. Neither BKB or any third party content provider nor their respective agents shall be liable for any direct indirect, incidental or consequential damages arising out of the use or inability to use or access the online auction site.
- 7.3. BKB makes no representation or warranties, implied or otherwise that the auction service will be uninterrupted and 100% error free. It is every users sole responsibility that the online auction site and services provided by BKB through this website will meet the user's individual requirements and be compatible with the user's hardware and software.

**8. General terms and conditions**

- 8.1. The Auctioneer will only be obliged to give reasons of the auction if such reasons are other than the voluntary sale of goods by its owners.
- 8.2. The bidders' roll and vendor roll will be available for registered purchasers for inspection with written notice and good reason during the normal office hours at the business premises of the Auctioneer.
- 8.3. Both the seller and the purchaser consent to the jurisdiction of the Magistrate's Court as contemplated in Section 45 of Act 32 of 1944 having regard to any action which the Auctioneer may institute against the purchaser or seller irrespective of the cause of action. Notwithstanding the aforesaid the Auctioneer will have the sole and absolute discretion to institute action in any High Court with appropriate jurisdiction.
- 8.4. Any legal costs that BKB may have or will incur as a result of the non-compliance of the Purchaser and/or Seller in terms of its or their obligations herein, shall be recoverable by BKB, together with collection commissions from the Purchaser and/or Seller on a scale as between attorney and own client.
- 8.5. No variation, amendment, novation or addition to these terms and conditions will have the effect of BKB renouncing any of its rights in terms hereof, unless it is reduced to writing and signed by BKB.
- 8.6. No relaxation or indulgence by the Auctioneer must be interpreted as a waiver of any of the Auctioneer's rights in terms hereof. Such relaxation or indulgence must also not be interpreted as a novation hereof.
- 8.7. Should any condition be unlawful or become retrospectively unlawful, that unlawful condition shall be deemed to be amended to the extent and in the manner as is necessary to make it lawful or should such amendment be impossible, the unlawful conditions shall be deemed devisable from the remainder of the conditions and pro no