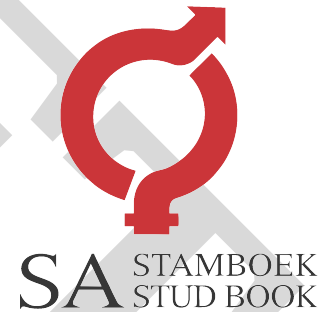


AMPTELIKE VEILINGSKATALOGUS VIR / OFFICIAL AUCTION CATALOGUE FOR

STEYNBERG BOERDERY - SKIETNEK

Veilingsdatum / Auction Date:
04 August 2022

Data soos op / Data as on:
11 July 2022



SALES UNDER AUSPICES OF BONSMARA SA

Bonsmara stud breeding is subject to the stipulations of the Livestock Improvement Act and conforms to the standards of Bonsmara SA. The Society therefore has the right to implement certain controls to ensure the accuracy of information regarding Parentage, Performance and Estimated Breeding Values.

Information regarding Parentage, Performance and Estimated Breeding Values of animals, as supplied by the breeder, have been verified and compared to the official database of LOGIX BEEF. Bonsmara SA therefore, confirms the accuracy of such information.

To the knowledge of the Society these controls have been carried out accurately. However, the Society does not take any responsibility for incorrect information through printing errors or incorrect information provided by the breeder.

Animals on such sales have been visually screened by Inspectors of Bonsmara SA and comply with the Bonsmara Minimum Breed Standards as stipulated by the Society.

The Society DOES NOT have any control over:

- Immunization and health status of animals
- Pregnancy status of cows and heifers
- Suitability of a bull for breeding
- Fertility status as well as venereal diseases and
- Commercial animals

Since the above is not classified as information regarding Parentage, Performance and Estimated Breeding Values, it DOES NOT fall within the jurisdiction of the meaning "Under the Auspices of Bonsmara SA".



VEILINGS ONDER BESKERMING VAN BONSMARA SA

Bonsmara stoetteling wat onderhewig is aan die bepalings van die Veeverbeteringswet, vind plaas onder die vaandel van Bonsmara SA. Daarom behou die Genootskap hom die reg voor om kontroles volgens bepaalde prosedures uit te oefen ten opsigte van Ouerskap inligting, Prestasiedata en Beraamde Teelwaardes.

Ouerskap inligting, Prestasiedata en Beraamde Teelwaardes soos deur die teler voorsien vir die doel van hierdie katalogus, is gekontroleer en vergelyk met die amptelike databasis soos gehou deur LOGIX BEEF. Bonsmara SA bevestig dus die korrektheid van sodanige inligting.

Alhoewel die kontroles na die beste wete van die Genootskap gedoen is, kan die Genootskap egter nie verantwoordelik gehou word vir foutiewe inligting as gevolg van drukkersfoute of verkeerde inligting deur die telers verskaf nie.

Diere wat op hierdie veilings aangebied word, is onderwerp aan 'n proses van visuele inspeksie deur Keurders van Bonsmara SA en voldoen aan die Bonsmara Minimum Rasstandaarde soos bepaal deur die Genootskap.

Die Genootskap het egter GEEN beheer oor:

- Immunisering en gesondheidstatus van diere
- Dragtigheidsstatus van koeie en verse
- Teelgeskiktheid van bulle
- Vrugbaarheidstatus, asook geslagsiektes en
- Kommersiële diere nie.

Aangesien bogenoemde nie val onder die bedoeling met Ouerskap inligting, Prestasiedata en Beraamde Teelwaardes nie, sorteer dit NIE onder die jurisdiksie van die bedoeling "Onder beskerming van Bonsmara SA" nie.



ANIMAL AND PEDIGREE INFORMATION

LOT 1 1 **THE RED CATTLE FARM** 2

3

ABC 150029 4

2015-02-03 5

SP 6

DNA ✓

Genomic ✓

DEF 100066 P

7

DEF 050022

8

GHI 070076 HH(c) 9

AGE/CALV. 14/10
AVG. Wt/CALV. 92/10
ICP 395

JKL 000077 P

12

MNO 030002

AGE/CALV. 19/10
AVG. Wt/CALV. 109/10
ICP 407

1. Lot Number
2. Owner of the animal
3. Herd's logo (if available)
4. Animal Identification Number
5. Birth date
6. Herd book section - NFR / PEN / F0 / A / B / SP
7. Four (4) generation pedigree
8. Genomic testing - it is indicated with the GT logo
9. Polled Status - the status will only be printed for animals that have been tested
10. Parentage Verification - a green tick (✓) indicates that the sire and/or dam has been verified via either microsatellite (DNA), or Genomic testing
11. QR Code - This code can be scanned with a smart device. It redirects to the animal's information on www.SABeefBulls.com where all information for the animal is available.
12. Dam information
 - Age and Number of Calvings
 - Average Wean Index and Number of Calves Weaned
 - Intercalving Period

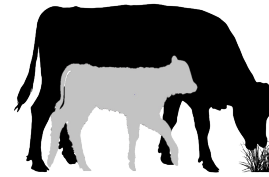
MYOSTATIN STATUS

The animal's status, if tested for myostatin variants, is indicated as follows:

- Not Tested
- 0 - Normal
- 1 - Heterozygous / Carrier of Double-Muscling gene
- 2 - Homozygous / Double-Muscled

LOGIX SELECTION VALUES

Calving Ease Value	Weaner Calf Value	Fertility Value	Maintenance Value	Cow Value	Growth Value	Carcass Value
109	98	111	99	101	98	103
1	2	3	4	5	6	7

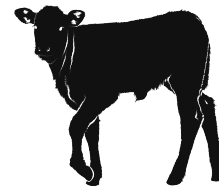


5 L♀ GIX Cow Value

Selection of:

- Fertile cows,
- with low maintenance,
- that calf easily,
- and wean heavy calves

- 1 Calving Ease Value EBVs Birth Direct & Maternal
- Calf Growth Value EBV Wean Direct
- 3 Fertility Value EBVs Cow & Heifer Fertility, EBV Longevity
- Milk Value EBV Wean Maternal
- 4 Maintenance Value EBVs Mature weight & Milk



2 L♀ GIX Weaner Calf Value

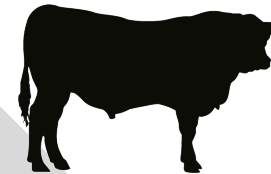
Selection of:

- Heavier weaning weights,
- with more milk,
- but restricted birth weight



7 L♀ GIX Carcass Value

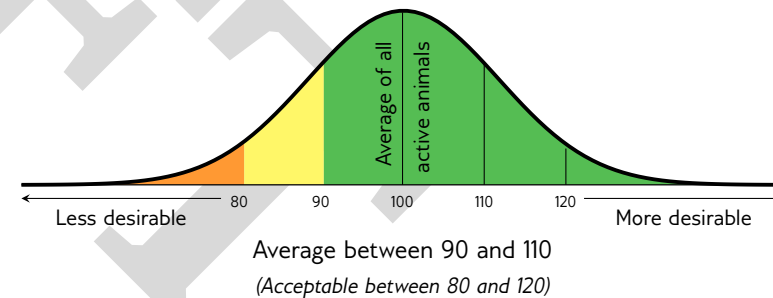
Selection for higher meat yield on carcass



6 L♀ GIX Growth Value

Selection of efficient growers on veld & in the feedlot

INTERPRETATION OF BREEDING VALUE INDICES



EXPLANATION OF BREEDING VALUES AND SELECTION VALUES

	Traits	Description/Measurement	Goal	General Guidelines						
				<80	<90	90-110	>110	>120		
Selection Values	5 Cow Value	CV	Combination of Calving Ease, Calf Growth, Milk, Maintenance and Fertility Values (Rand-Value)	Profitable Cow	Loss					Profit
	1 Calving Ease Value	CEV	Risk for calving problems (calf too heavy) vs calf too small	Average birth weight	High					Low
	Calf Growth Value	CGrV	Calf's genetic ability for pre-weaning growth	Heavy weaner calf	Light					Heavy
	Milk Value	MlkV	Cow's genetic mothering and milking ability	Enough milk for the calf	Less					More
	4 Maintenance Value	MntV	Maintenance requirements of cow (cow weight and milk)	Low cow maintenance	High				*	Low
	3 Fertility Value	FertV	Fertility and retention of cows and heifers	Fertile cows	Low					High
	2 Weaner Calf Value	WnCV	Combination of calf's weight and cow's milk	Heavy weaner calves	Light					Heavy
	6 Growth Value	GV	Efficient growth on veld and in feedlot (Rand-value)	Profitable growth	Loss					Profit
Cow & Heifer	7 Carcass Value	VarcV	Meat on carcass (Weight and RTU EBVs)	More meat on the carcass	Less					More
	Production Value	PV	Combination of Cow- and Growth values (Rand-value)	Profitable animals	Loss					Profit
	8 Birth Weight Direct	BD	Birth weight (Calf's genetic ability)	Average birth weight	Heavy					Light
	Birth Weight Maternal	BM	Birth weight (Cow's genetic ability)	Easy calving	Heavy					Light
	9 Weaning Weight Direct	WD	Weaning weight (Calf's genetic ability)	Heavy weaner calves	Light					Heavy
	10 Weaning Weight Maternal	WM	Weaning weight (Cow's genetic ability)	Good mothers	Poor					Good
Fertility	18 Mature Cow Weight	MW	Cow weight at weaning of first three calves	Average mature cow weight	Light			*	*	Heavy
	Cow-Calf Birth	CCB	EBV Birth Direct / EBV Mature Cow weight	Average	Low					High
	Cow-Calf Wean	CCW	EBV Wean Direct / EBV Mature Cow weight	High calf-cow ratio	Low					High
	12 Heifer Fertility	HF	Age at first calving	Fertile heifers	Less					More
	13 Cow Fertility	CFE	First 3 inter-calving periods (ICPs)	Fertile cows	Less					More
Growth & Frame	11 Scrotal Circumference	SC	Scrotal circumference as measured during the growth test	Fertile bulls	Less					More
	14 Longevity	LG	Retention of progeny	Acceptable progeny	Poor					Good
	15 Post-Wean Weight	PWn	12- and 18 month weights	Good post-wean growth	Low				*	High
	16 Average Daily Gain	ADG	Average daily gain	Good growth	Poor					Good
	17 Feed Conversion Ratio	FCR	100g feed intake / g weight gain	Feed efficiency	Poor					Good
	Final Test Weight	FW	Final weight in the growth test	Heavy carcass	Light				*	Heavy
	19 Height	H	Shoulder / Hip height in growth test	Average height	Short					Tall
	20 Length	L	Length in growth test	Longer for more muscle	Short					Long
Carcass	24 Length-Height Ratio	LH	EBV Length / EBV Height	Longer rather than tall	<1					>1
	21 Eye Muscle Area	EMA	RTU measured eye muscle area	Bigger steaks	Small					Big
	22 Fat Thickness	Fat	RTU measured P8 backfat thickness	Carcass quality	Thin					Thick
	23 Marbling	Mar	RTU measured % of intra-muscular fat	Juicy meat	Low					High
	Dressing Percentage	D%	Carcass weight / Live weight	High dressing percentage	Low					High

* Determined by own selection goal

GENETIC VALUES - BUILDING BLOCKS

Calf and Mother			Fertility				Post-Wean Growth			Frame			Carcass		
Birth Dir.	Wean Dir.	Wean Mat.	Scrot. Circ.	Heifer Fert.	Cow Fert.	Longev.	Post Wean	ADG	FCR	Mature Weight	Height	Length	EMA	Fat	Mar
99	99	90	97	75	92	85	100	94	93	92	123	110	104	100	79
8	9	10	11	12	13	14	15	16	17	18	19	20	21	22	23

PHENOTYPIC VALUES

Wean Index	365D Index	540D Index	ADG Index	FCR Index	Scrotum	LH
109	104	105	122	117	327	1.22
			16	17	11	24

The Logix Selection Values are compiled of specific genetic building blocks, as indicated in the selection value descriptions on the previous page. These genetic building blocks are indicated in the catalogue by their Breeding Value Indices.

- Wean, 365D, 504D, ADG and FCR Indices - phenotypic index obtained within the animal's contemporary group
- Scrotum - adjusted scrotal circumference, in mm, as measured during the growth test
- Length-Height Ratio (LH) - the animal's length / height ratio as measured during the growth test

BULLS

LOT 1 STEYNBERG BOERDERY

SBT 190004
2019-09-03
SP

Parentage Sire Dam

DNA

Genomic

VJN 130009

LAR 070038

CEF 970089
AGE/CALV. 18/15
AVG. WJ/CALV. 91/15
ICP 375

OPL 120078

SBT 160050
AGE/CALV. 5/3
AVG. WJ/CALV. 105/2
ICP 369

SBT 090008
AGE/CALV. 12/5
AVG. WJ/CALV. 100/5
ICP 367

BG 040088

LAR 040247
AGE/CALV. 15/13
AVG. WJ/CALV. 102/13

NPT 910022

CEF 950036
AGE/CALV. 9/8
AVG. WJ/CALV. 103/16

FCT 040104

SSK 070048
AGE/CALV. 13/9
AVG. WJ/CALV. 98/7

Calving Ease Value 99	Weaner Calf Value 87	Fertility Value 102	Maintenance Value 113	Cow Value 94	Growth Value -	Carcass Value 87
---------------------------------	--------------------------------	-------------------------------	---------------------------------	------------------------	--------------------------	----------------------------

Calf and Mother			Fertility				Post-Wean Growth			Frame			Carcass		
Birth Dir.	Wean Dir.	Wean Mat.	Scr. Circ.	Heifer Fert.	Cow Fert.	Longev.	Post Wean	ADG	FCR	Mature Weight	Height	Length	EMA	Fat	Mar
99	84	106	95	116	99	79	77	89	93	89	102	100	86	96	93

Wean Index	365D Index	540D Index	ADG Index	FCR Index	Scrotum	LH
106	98	100	-	-	-	-

Myostatin

Q204X	Not Tested
NT821	Not Tested
F94L	Not Tested

REMARKS: Geboortemassa : 36kg Bul met goeie breedte, sal goeie speenkalwers teel. Goeie kwaliteit

LOGIX EBV Analysis: 2022-06-18

LOT 2 STEYNBERG BOERDERY

SBT 190013
2019-09-07
SP

Parentage Sire Dam

DNA

Genomic

OLI 150038

WVZ 110104

BBN 050169
AGE/CALV. 16/11
AVG. WJ/CALV. 102/12
ICP 475

HBT 130004

SBT 160032
AGE/CALV. 5/2
AVG. WJ/CALV. 93/1
ICP 723

SBT 120093
AGE/CALV. 9/5
AVG. WJ/CALV. 101/4
ICP 455

MJG 040071 P

WVZ 090014
AGE/CALV. 12/10
AVG. WJ/CALV. 105/9

JRB 010097

BBN 000154
AGE/CALV. 11/7
AVG. WJ/CALV. 104/7

MCU 070007 P

HBT 100040
AGE/CALV. 11/9
AVG. WJ/CALV. 97/9

Calving Ease Value 103	Weaner Calf Value 86	Fertility Value 92	Maintenance Value 109	Cow Value 87	Growth Value -	Carcass Value 89
----------------------------------	--------------------------------	------------------------------	---------------------------------	------------------------	--------------------------	----------------------------

Calf and Mother			Fertility				Post-Wean Growth			Frame			Carcass		
Birth Dir.	Wean Dir.	Wean Mat.	Scr. Circ.	Heifer Fert.	Cow Fert.	Longev.	Post Wean	ADG	FCR	Mature Weight	Height	Length	EMA	Fat	Mar
104	86	100	95	106	92	80	89	91	94	91	98	98	85	101	96

Wean Index	365D Index	540D Index	ADG Index	FCR Index	Scrotum	LH
93	99	100	-	-	-	-

Myostatin

Q204X	Not Tested
NT821	Not Tested
F94L	Not Tested

REMARKS: Geboortemassa : 35kg Manlike, sterk bul met diepte, lengte en goeie kwaliteit en kapasiteit

LOGIX EBV Analysis: 2022-06-18

LOT 3 STEYNBERG BOERDERY

SBT 190014
2019-09-08
SP

Parentage Sire Dam

DNA

Genomic

OLI 150038

WVZ 110104

BBN 050169
AGE/CALV. 16/11
AVG. WJ/CALV. 102/12
ICP 475

HBT 130004

SBT 160072
AGE/CALV. 3/1
AVG. WJ/CALV. 103/1
ICP -

SBT 120104
AGE/CALV. 6/1
AVG. WJ/CALV. 122/1
ICP -

MJG 040071 P

WVZ 090014
AGE/CALV. 12/10
AVG. WJ/CALV. 105/9

JRB 010097

BBN 000154
AGE/CALV. 11/7
AVG. WJ/CALV. 104/7

MCU 070007 P

HBT 100040
AGE/CALV. 11/9
AVG. WJ/CALV. 97/9

Calving Ease Value 105	Weaner Calf Value 89	Fertility Value 91	Maintenance Value 101	Cow Value 88	Growth Value -	Carcass Value 98
----------------------------------	--------------------------------	------------------------------	---------------------------------	------------------------	--------------------------	----------------------------

Calf and Mother			Fertility				Post-Wean Growth			Frame			Carcass		
Birth Dir.	Wean Dir.	Wean Mat.	Scr. Circ.	Heifer Fert.	Cow Fert.	Longev.	Post Wean	ADG	FCR	Mature Weight	Height	Length	EMA	Fat	Mar
105	89	100	99	104	98	75	85	97	97	97	104	105	91	102	99

Wean Index	365D Index	540D Index	ADG Index	FCR Index	Scrotum	LH
103	97	103	-	-	-	-

Myostatin

Q204X	Not Tested
NT821	Not Tested
F94L	Not Tested

REMARKS: Geboortemassa : 33kg Bul toon goeie manlikheid, goeie lengte en diepte

LOGIX EBV Analysis: 2022-06-18

BULLE

LOT 4 STEYNBERG BOERDERY

OLI 150038

SBT 190015 P
2019-09-08 SP

Ouerskap Vaar Moer

DNS

Genomies

SBT 160020
OUD/KALW. 5/2
GEM. S/I/KALW. 112/2
TKP 411

SBT 130099
OUD/KALW. 8/5
GEM. S/I/KALW. 97/4
TKP 456

WBZ 110104

BBN 050169
OUD/KALW. 16/11
GEM. S/I/KALW. 102/12
TKP 475

HBT 130004

MCU 070007 P

HBT 100040
OUD/KALW. 11/9
GEM. S/I/KALW. 97/9

MJG 040071 P

WBZ 090014
OUD/KALW. 12/10
GEM. S/I/KALW. 105/9

JRB 010097

BBN 000154
OUD/KALW. 11/7
GEM. S/I/KALW. 104/7

Geboortegemak Waarde 114	Speenkalf Waarde 87	Vrugbaarheids-waarde 97	Onderhouds-waarde 105	Koeiwaarde 92	Groei-waarde -	Karkas-waarde 93
---	--------------------------------------	--	--	--------------------------------	---------------------------------	-----------------------------------

Kalf en Moeder			Vrugbaarheid				Na-Speen Groei			Raam		Karkas			
Geb. Dir.	Spn. Dir.	Spn. Mat.	Skr. Omtr.	Vers Vrugb.	Koei Vrugb.	Lankl.	Na-Speen	GDT	VOV	Volw. Gewig	Hoogte	Lengte	OSO	Vet	Mar
113	85	97	96	106	99	85	83	94	95	94	100	101	88	101	97

Spn. Indeks	365D Indeks	540D Indeks	GDT Indeks	VOV Indeks	Skrotum	LH
104	97	105	-	-	-	-

Miostation		
Q204X	Nie	Getoets
NT821	Nie	Getoets
F94L	Nie	Getoets

OPMERKINGS: Geboortemassa : 34 kg Bul met baie goeie agterkwart, goeie stert aanhegting, Baie lengte op die bul

LOGIX EBV Analiese: 2022-06-18

LOT 5 STEYNBERG BOERDERY

OLI 150038

SBT 190017 P
2019-09-10 SP

Ouerskap Vaar Moer

DNS

Genomies

SBT 160046
OUD/KALW. 5/3
GEM. S/I/KALW. 108/2
TKP 379

SBT 090066
OUD/KALW. 12/6
GEM. S/I/KALW. 100/5
TKP 354

WBZ 110104

BBN 050169
OUD/KALW. 16/11
GEM. S/I/KALW. 102/12
TKP 475

AT 120217

AT 100033

AT 060026
OUD/KALW. 9/6
GEM. S/I/KALW. 107/5

MJG 040071 P

WBZ 090014
OUD/KALW. 12/10
GEM. S/I/KALW. 105/9

JRB 010097

BBN 000154
OUD/KALW. 11/7
GEM. S/I/KALW. 104/7

Geboortegemak Waarde 93	Speenkalf Waarde 89	Vrugbaarheids-waarde 93	Onderhouds-waarde 109	Koeiwaarde 88	Groei-waarde -	Karkas-waarde 87
--	--------------------------------------	--	--	--------------------------------	---------------------------------	-----------------------------------

Kalf en Moeder			Vrugbaarheid				Na-Speen Groei			Raam		Karkas			
Geb. Dir.	Spn. Dir.	Spn. Mat.	Skr. Omtr.	Vers Vrugb.	Koei Vrugb.	Lankl.	Na-Speen	GDT	VOV	Volw. Gewig	Hoogte	Lengte	OSO	Vet	Mar
93	88	106	104	104	98	80	89	86	96	91	102	97	84	97	96

Spn. Indeks	365D Indeks	540D Indeks	GDT Indeks	VOV Indeks	Skrotum	LH
102	100	102	-	-	-	-

Miostation		
Q204X	Nie	Getoets
NT821	Nie	Getoets
F94L	Nie	Getoets

OPMERKINGS: Geboortemassa : 37kg Poena bul, een van beste bulle op die veiling Sterk kop, breë agterkwart Baie goeie gebal-anseerde bul wat in enige kudde 'n verskil sal maak

LOGIX EBV Analiese: 2022-06-18

LOT 6 STEYNBERG BOERDERY

CEW 160043 HH(c)

SBT 190027
2019-09-15 B

Ouerskap Vaar Moer

DNS

Genomies

SBT 150017
OUD/KALW. 6/3
GEM. S/I/KALW. 99/3
TKP 368

CEW 110199

CEW 120180
OUD/KALW. 4/2
GEM. S/I/KALW. 95/2
TKP 553

CEW 070082

CEW 070160
OUD/KALW. 6/3
GEM. S/I/KALW. 100/3

CEW 090191

CEW 030078
OUD/KALW. 9/8
GEM. S/I/KALW. 100/8

Geboortegemak Waarde 115	Speenkalf Waarde -	Vrugbaarheids-waarde -	Onderhouds-waarde -	Koeiwaarde -	Groei-waarde -	Karkas-waarde -
---	-------------------------------------	---	--------------------------------------	-------------------------------	---------------------------------	----------------------------------

Kalf en Moeder			Vrugbaarheid				Na-Speen Groei			Raam		Karkas			
Geb. Dir.	Spn. Dir.	Spn. Mat.	Skr. Omtr.	Vers Vrugb.	Koei Vrugb.	Lankl.	Na-Speen	GDT	VOV	Volw. Gewig	Hoogte	Lengte	OSO	Vet	Mar
118	66	99	-	-	-	77	67	-	-	-	-	-	-	-	-

Spn. Indeks	365D Indeks	540D Indeks	GDT Indeks	VOV Indeks	Skrotum	LH
96	100	89	-	-	-	-

Miostation		
Q204X	Nie	Getoets
NT821	Nie	Getoets
F94L	Nie	Getoets

OPMERKINGS: Geboortegewig : 33kg Bul met goeie temperament, het goeie potensiaal

LOGIX EBV Analiese: 2022-06-18

LOT 8 STEYNBERG BOERDERY

SBT 190032
2019-09-20
B

Parentage Sire Dam
DNA
Genomic

CEW 110199

CEW 160043 HH(c)

CEW 120180
AGE/CALV. 4/2
AVG. WJ/CALV. 95/2
ICP 553

CEW 070082
CEW 070160
AGE/CALV. 6/3
AVG. WJ/CALV. 100/3
CEW 090191
CEW 030078
AGE/CALV. 9/8
AVG. WJ/CALV. 100/8

SBT 150010
AGE/CALV. 6/2
AVG. WJ/CALV. 98/2
ICP 368

Calving Ease Value 129	Weaner Calf Value -	Fertility Value -	Maintenance Value -	Cow Value -	Growth Value -	Carcass Value -
----------------------------------	------------------------	----------------------	------------------------	----------------	-------------------	--------------------

Calf and Mother			Fertility				Post-Wean Growth			Frame			Carcass		
Birth Dir.	Wean Dir.	Wean Mat.	Scr. Circ.	Heifer Fert.	Cow Fert.	Longev.	Post Wean	ADG	FCR	Mature Weight	Height	Length	EMA	Fat	Mar
130	76	94	-	-	-	77	74	-	-	-	-	-	-	-	-

Wean Index	365D Index	540D Index	ADG Index	FCR Index	Scrotum	LH
106	106	103	-	-	-	-

Myostatin	
Q204X	Not Tested
NT821	Not Tested
F94L	Not Tested

REMARKS: Geboortemassa : 27kg Goeie versbul wat uitstekende groei toon

LOGIX EBV Analysis: 2022-06-18

LOT 9 STEYNBERG BOERDERY

SBT 190035
2019-09-21
B

Parentage Sire Dam
DNA
Genomic

VJN 130009

LAR 070038

CEF 970089
AGE/CALV. 18/15
AVG. WJ/CALV. 91/15
ICP 375

BG 040088
LAR 040247
AGE/CALV. 15/13
AVG. WJ/CALV. 102/13
NPT 910022
CEF 950036
AGE/CALV. 9/8
AVG. WJ/CALV. 103/6

SBT 130095
AGE/CALV. 8/3
AVG. WJ/CALV. 108/3
ICP 333

Calving Ease Value 112	Weaner Calf Value -	Fertility Value -	Maintenance Value -	Cow Value -	Growth Value -	Carcass Value -
----------------------------------	------------------------	----------------------	------------------------	----------------	-------------------	--------------------

Calf and Mother			Fertility				Post-Wean Growth			Frame			Carcass		
Birth Dir.	Wean Dir.	Wean Mat.	Scr. Circ.	Heifer Fert.	Cow Fert.	Longev.	Post Wean	ADG	FCR	Mature Weight	Height	Length	EMA	Fat	Mar
117	73	108	-	-	-	78	77	-	-	-	-	-	-	-	-

Wean Index	365D Index	540D Index	ADG Index	FCR Index	Scrotum	LH
101	106	99	-	-	-	-

Myostatin	
Q204X	Not Tested
NT821	Not Tested
F94L	Not Tested

REMARKS: Geboortemassa : 33 kg Bul met goeie lengte. Sal kalwers met lae geboortemassa teel, ideaal vir kalwingsgemak

LOGIX EBV Analysis: 2022-06-18

LOT 10 STEYNBERG BOERDERY

SBT 190036
2019-09-23
B

Parentage Sire Dam
DNA
Genomic

VJN 130009

LAR 070038

CEF 970089
AGE/CALV. 18/15
AVG. WJ/CALV. 91/15
ICP 375

BG 040088
LAR 040247
AGE/CALV. 15/13
AVG. WJ/CALV. 102/13
NPT 910022
CEF 950036
AGE/CALV. 9/8
AVG. WJ/CALV. 103/6
FCT 040104
SSK 070048
AGE/CALV. 13/9
AVG. WJ/CALV. 98/7

SBT 160061
AGE/CALV. 5/3
AVG. WJ/CALV. 112/2
ICP 375

OPL 120078

SBT 060005
AGE/CALV. 15/4
AVG. WJ/CALV. 106/4
ICP 364

Calving Ease Value 91	Weaner Calf Value 90	Fertility Value 95	Maintenance Value 106	Cow Value 90	Growth Value -	Carcass Value 93
---------------------------------	--------------------------------	------------------------------	---------------------------------	------------------------	-------------------	----------------------------

Calf and Mother			Fertility				Post-Wean Growth			Frame			Carcass		
Birth Dir.	Wean Dir.	Wean Mat.	Scr. Circ.	Heifer Fert.	Cow Fert.	Longev.	Post Wean	ADG	FCR	Mature Weight	Height	Length	EMA	Fat	Mar
94	90	110	98	109	96	79	88	93	95	93	107	104	90	97	95

Wean Index	365D Index	540D Index	ADG Index	FCR Index	Scrotum	LH
110	113	106	-	-	-	-

Myostatin	
Q204X	Not Tested
NT821	Not Tested
F94L	Not Tested

REMARKS: Geboortemassa : 37kg Het groeivermoë wat goeie kwaliteit speenkalwers sal teel Goed gebalanseerde, harde bul

LOGIX EBV Analysis: 2022-06-18

BULLE

LOT 11 STEYNBERG BOERDERY

SBT 190044
2019-09-28
B

VJN 130009

SBT 120101
OUD/KALW. 9/5
GEM. SI/KALW. 97/5
TKP 364

LAR 070038

CEP 970089
OUD/KALW. 18/15
GEM. SI/KALW. 91/15
TKP 375

BG 040088

LAR 040247
OUD/KALW. 15/13
GEM. SI/KALW. 102/13

NPT 910022

CEP 950036
OUD/KALW. 9/8
GEM. SI/KALW. 103/6

Geboortegemak Waarde 116	Speenkalf Waarde -	Vrugbaarheids-waarde 99	Onderhouds-waarde -	Koeiwaarde -	Groei-waarde -	Karkas-waarde -
------------------------------------	------------------------------	-----------------------------------	-------------------------------	------------------------	--------------------------	---------------------------

Kalf en Moeder			Vrugbaarheid				Na-Speen Groei			Raam		Karkas			
Geb. Dir.	Spn. Dir.	Spn. Mat.	Skr. Omtr.	Vers Vrugb.	Koei Vrugb.	Lankl.	Na-Speen	GDT	VOV	Volw. Gewig	Hoogte	Lengte	OSO	Vet	Mar
114	77	100	-	111	101	78	76	-	-	-	-	-	-	-	-

Spn. Indeks	365D Indeks	540D Indeks	GDT Indeks	VOV Indeks	Skrotum	LH
102	105	100	-	-	-	-

Opmerkinge: DNS Genomies

OPMERKINGS: Geboortemassa: 36 kg Ideale versbul Toon goeie manlikheid met uitstekende groei

LOGIX EBV Analiese: 2022-06-18

LOT 12 STEYNBERG BOERDERY

SBT 190051
2019-10-01
B

VJN 130009

SBT 130106
OUD/KALW. 8/6
GEM. SI/KALW. 97/5
TKP 357

LAR 070038

CEP 970089
OUD/KALW. 18/15
GEM. SI/KALW. 91/15
TKP 375

BG 040088

LAR 040247
OUD/KALW. 15/13
GEM. SI/KALW. 102/13

NPT 910022

CEP 950036
OUD/KALW. 9/8
GEM. SI/KALW. 103/6

Geboortegemak Waarde 94	Speenkalf Waarde -	Vrugbaarheids-waarde -	Onderhouds-waarde -	Koeiwaarde -	Groei-waarde -	Karkas-waarde -
-----------------------------------	------------------------------	----------------------------------	-------------------------------	------------------------	--------------------------	---------------------------

Kalf en Moeder			Vrugbaarheid				Na-Speen Groei			Raam		Karkas			
Geb. Dir.	Spn. Dir.	Spn. Mat.	Skr. Omtr.	Vers Vrugb.	Koei Vrugb.	Lankl.	Na-Speen	GDT	VOV	Volw. Gewig	Hoogte	Lengte	OSO	Vet	Mar
96	84	98	-	-	-	78	82	-	-	-	-	-	-	-	-

Spn. Indeks	365D Indeks	540D Indeks	GDT Indeks	VOV Indeks	Skrotum	LH
97	99	103	-	-	-	-

Opmerkinge: DNS Genomies

OPMERKINGS: Geboortemassa : 41 kg Ideale bul vir koeie Goeie lengte en kapasiteit Sal goeie speenkalters teel

LOGIX EBV Analiese: 2022-06-18

LOT 13 STEYNBERG BOERDERY

SBT 190059
2019-10-05
B

VJN 130009

SBT 140091
OUD/KALW. 7/4
GEM. SI/KALW. 102/3
TKP 372

LAR 070038

CEP 970089
OUD/KALW. 18/15
GEM. SI/KALW. 91/15
TKP 375

BG 040088

LAR 040247
OUD/KALW. 15/13
GEM. SI/KALW. 102/13

NPT 910022

CEP 950036
OUD/KALW. 9/8
GEM. SI/KALW. 103/6

Geboortegemak Waarde 104	Speenkalf Waarde -	Vrugbaarheids-waarde -	Onderhouds-waarde -	Koeiwaarde -	Groei-waarde -	Karkas-waarde -
------------------------------------	------------------------------	----------------------------------	-------------------------------	------------------------	--------------------------	---------------------------

Kalf en Moeder			Vrugbaarheid				Na-Speen Groei			Raam		Karkas			
Geb. Dir.	Spn. Dir.	Spn. Mat.	Skr. Omtr.	Vers Vrugb.	Koei Vrugb.	Lankl.	Na-Speen	GDT	VOV	Volw. Gewig	Hoogte	Lengte	OSO	Vet	Mar
105	89	103	-	-	-	77	84	-	-	-	-	-	-	-	-

Spn. Indeks	365D Indeks	540D Indeks	GDT Indeks	VOV Indeks	Skrotum	LH
110	109	101	-	-	-	-

Opmerkinge: DNS Genomies

OPMERKINGS: Geboortemassa : 37kg Bul wat goed aanpasbaar sal wees in harde veld toestande Sal ideaal wees om op verse te gebruik

LOGIX EBV Analiese: 2022-06-18

LOT 14 STEYNBERG BOERDERY

Parentage: Sire Dam

SBT 190080
2019-10-21
B

DNA
Genomic

OLI 150038

SBT 150013
AGE/CALV. 6/3
AVG. WJ/CALV. 106/3
ICP 358

WBVZ 110104

BBN 050169
AGE/CALV. 16/11
AVG. WJ/CALV. 102/12
ICP 475

MJG 040071 P

WBVZ 090014
AGE/CALV. 12/10
AVG. WJ/CALV. 105/9

JRB 010097

BBN 000154
AGE/CALV. 11/7
AVG. WJ/CALV. 104/7

Calving Ease Value 98	Weaner Calf Value -	Fertility Value -	Maintenance Value -	Cow Value -	Growth Value -	Carcass Value -
---------------------------------	------------------------	----------------------	------------------------	----------------	-------------------	--------------------

Calf and Mother			Fertility				Post-Wean Growth			Frame			Carcass		
Birth Dir.	Wean Dir.	Wean Mat.	Scr. Circ.	Heifer Fert.	Cow Fert.	Longev.	Post Wean	ADG	FCR	Mature Weight	Height	Length	EMA	Fat	Mar
102	76	108	-	-	-	77	76	-	-	-	-	-	-	-	-

Wean Index	365D Index	540D Index	ADG Index	FCR Index	Scrotum	LH
104	103	94	-	-	-	-

Myostatin	
Q204X	Not Tested
NT821	Not Tested
F94L	Not Tested

REMARKS: Geboortemassa : 38kg Bul met baie goeie pigment en haarkwaliteit

LOGIX EBV Analysis: 2022-06-18

LOT 15 STEYNBERG BOERDERY

Parentage: Sire Dam

SBT 190087
2019-10-26
B

DNA
Genomic

VJN 130009

SBT 090066
AGE/CALV. 12/6
AVG. WJ/CALV. 100/5
ICP 354

LAR 070038

CEF 970089
AGE/CALV. 18/15
AVG. WJ/CALV. 91/15
ICP 375

BG 040088

LAR 040247
AGE/CALV. 15/13
AVG. WJ/CALV. 102/13

NPT 910022

CEF 950036
AGE/CALV. 9/8
AVG. WJ/CALV. 103/6

Calving Ease Value 101	Weaner Calf Value -	Fertility Value 97	Maintenance Value -	Cow Value -	Growth Value -	Carcass Value -
----------------------------------	------------------------	------------------------------	------------------------	----------------	-------------------	--------------------

Calf and Mother			Fertility				Post-Wean Growth			Frame			Carcass		
Birth Dir.	Wean Dir.	Wean Mat.	Scr. Circ.	Heifer Fert.	Cow Fert.	Longev.	Post Wean	ADG	FCR	Mature Weight	Height	Length	EMA	Fat	Mar
105	76	105	-	109	99	78	80	-	-	-	-	-	-	-	-

Wean Index	365D Index	540D Index	ADG Index	FCR Index	Scrotum	LH
102	105	104	-	-	-	-

Myostatin	
Q204X	Not Tested
NT821	Not Tested
F94L	Not Tested

REMARKS: Geboortemassa : 39kg Geharde bul wat 'n groter raam het Sal goeie speenkalwers teel Bul met uitstekende potensiaal

LOGIX EBV Analysis: 2022-06-18

LOT 16 STEYNBERG BOERDERY

Parentage: Sire Dam

SBT 190094
2019-11-01
B

DNA
Genomic

VJN 130009

SBT 100046
AGE/CALV. 11/5
AVG. WJ/CALV. 96/5
ICP 362

LAR 070038

CEF 970089
AGE/CALV. 18/15
AVG. WJ/CALV. 91/15
ICP 375

BG 040088

LAR 040247
AGE/CALV. 15/13
AVG. WJ/CALV. 102/13

NPT 910022

CEF 950036
AGE/CALV. 9/8
AVG. WJ/CALV. 103/6

Calving Ease Value 96	Weaner Calf Value -	Fertility Value -	Maintenance Value -	Cow Value -	Growth Value -	Carcass Value -
---------------------------------	------------------------	----------------------	------------------------	----------------	-------------------	--------------------

Calf and Mother			Fertility				Post-Wean Growth			Frame			Carcass		
Birth Dir.	Wean Dir.	Wean Mat.	Scr. Circ.	Heifer Fert.	Cow Fert.	Longev.	Post Wean	ADG	FCR	Mature Weight	Height	Length	EMA	Fat	Mar
97	81	101	-	-	-	74	80	-	-	-	-	-	-	-	-

Wean Index	365D Index	540D Index	ADG Index	FCR Index	Scrotum	LH
94	94	104	-	-	-	-

Myostatin	
Q204X	Not Tested
NT821	Not Tested
F94L	Not Tested

REMARKS: Langlyf bul met sterk kop wat goeie manlikheid toon

LOGIX EBV Analysis: 2022-06-18

Dier Info				Actual Values						Expected Breeding Values										Indices			Dam				
LOT	Animal ID	Sex	SEC	Birth Wt (kg)	205d Wt (kg)	CCB Ratio	CCW Ratio	Length Height Ratio	Scr. Circ. (mm)	Birth Dir (kg)	Birth Mat (kg)	Wean Dir (kg)	Wean Mat (kg)	Post Wean (kg)	Mature Weight. (kg)	ADG (g/d)	FCR (kg:kg)	Scr. Circ. (mm)	Height. (mm)	Length (mm)	Wean	ADG	Scr. Circ.	Avg. Wean Index	Nr. Calves	Repr. Index	
Breed Average				36	238	-	-	-	-	1.03	-0.20	13.8	3.9	22	10	101	-48	10.2									
Auction Average				36	238	-	-	-	-	0.38	0.06	5.3	4.6	10	2	61	-36	8.4	3	16	102	-	98	102	3.0	109	
1	SBT 190004	M	SP	36	230	-	-	-	-	1.09	-0.15	6.3	5.5	7	-3	46	-31	5.8	3	15	106	-	95	105	3	104	
2	SBT 190013	M	SP	35	221	-	-	-	-	0.59	0.03	7.3	3.9	17	0	60	-34	5.8	-1	13	93	-	95	93	2	75	
3	SBT 190014	M	SP	34	222	-	-	-	-	0.48	-0.21	9.0	3.9	14	7	89	-42	9.5	4	22	103	-	99	103	1	97	
4	SBT 190015	M	SP	33	224	-	-	-	-	-0.33	-0.43	7.2	3.0	13	3	72	-37	7.4	1	17	104	-	96	112	2	95	
5	SBT 190017	M	SP	37	224	-	-	-	-	1.73	-0.12	8.4	5.6	16	-0	31	-38	13.5	3	11	102	-	104	108	3	102	
6	SBT 190027	M	B	33	208	-	-	-	-	-0.87	0.26	-1.9	3.6	-1	-	-	-	-	-	-	96	-	-	99	3	115	
8	SBT 190032	M	B	27	222	-	-	-	-	-2.08	-0.17	2.7	2.1	6	-	-	-	-	-	-	106	-	-	98	2	115	
9	SBT 190035	M	B	33	218	-	-	-	-	-0.76	0.58	1.7	6.2	6	-	-	-	-	-	-	101	-	-	108	3	124	
10	SBT 190036	M	B	37	239	-	-	-	-	1.66	0.38	9.2	6.7	15	2	67	-37	8.4	7	21	110	-	98	112	3	103	
11	SBT 190044	M	B	36	223	-	-	-	-	-0.46	-0.49	3.2	3.9	7	-	-	-	-	-	-	102	-	-	97	5	116	
12	SBT 190051	M	B	41	219	-	-	-	-	1.41	0.28	6.5	3.4	11	-	-	-	-	-	-	97	-	-	97	6	118	
13	SBT 190059	M	B	37	239	-	-	-	-	0.55	-0.08	8.9	4.7	12	-	-	-	-	-	-	110	-	-	102	4	114	
14	SBT 190080	M	B	38	228	-	-	-	-	0.78	0.53	3.1	6.1	5	-	-	-	-	-	-	104	-	-	106	3	118	
15	SBT 190087	M	B	39	225	-	-	-	-	0.49	0.46	2.9	5.4	9	-	-	-	-	-	-	102	-	-	100	6	119	
16	SBT 190094	M	B	41	230	-	-	-	-	1.38	-0.02	4.9	4.3	10	-	-	-	-	-	-	94	-	-	96	5	117	

EXPLANATION OF CATALOGUE ABBREVIATIONS
VERDUIDELIKING VAN KATALOGUS AFKORTINGS

Lot Number	LOT	LOT	Lot Nommer
Estimated breeding value	EBV	EBV	Beraamde teelwaarde
Parentage verification	Parentage	Ouerskap	Ouerskap verifikasie
Age in years / Number of calvings	AGE. / CALV.	OUD. / KALF.	Ouderdom in jaar / Aantal kalwings
Average Wean index / Number of calves weaned	Ave WI / CALV.	GEM SI / KALF.	Gemiddelde speen indeks / Aantal kalwers gespeen
Animal identification number	ID	ID	Dier se identifikasie nommer
Herd Book Section	SEC	AFD	Kuddeboek Afdeling
Herd Book Section: Pending Registration	PEN	PEN	Kuddeboek Afdeling: Wag vir Registrasie
Herd Book Section: Not for Registration	NFR	NFR	Kuddeboek Afdeling: Nie vir Registrasie
Herd Book Section: Foundation Generation	FO	FO	Kuddeboek Afdeling: Fondasie Generasie
Herd Book Section: Appendix A	A	A	Kuddeboek Afdeling: Aanhangsel A
Herd Book Section: Appendix B	B	B	Kuddeboek Afdeling: Aanhangsel B
Herd Book Section: Studbook Proper, a registered animal	SP	SP	Kuddeboek Afdeling: Studbook Proper, 'n geregistreerde dier
Genomically Tested	GT	GT	Genomies Getoets
Homozygous Horned (Celtic test)	HH(c)	HH(c)	Homosigoties horings (Celtic toets)
Homozygous Polled (Celtic test)	PP(c)	PP(c)	Homosigoties Poena (Celtic toets)
Heterozygous Polled (Celtic test)	Pp(c)	Pp(c)	Heterosigoties Poena (Celtic toets)
Phenotypically Polled	P	P	Fenotipies Poena
Intercalving Period	ICP	TKP	Tussen-Kalf Periode
Birth Direct breeding value	Birth Dir.	Geb. Dir.	Geboorte Direk teelwaarde
Wean Direct breeding value	Wean Dir.	Spn. Dir.	Speen Direk teelwaarde
Wean Maternal breeding value	Wean Mat.	SPn. Mat.	Speen Maternaal teelwaarde
Scrotal Circumference	Scr. Circ.	Skr. Omt.	Skrotum omtrek
Heifer Fertility	Heifer Fert.	Vers Vrugb.	Vers Vrugbaarheid
Cow Fertility	Cow Fert.	Koei Vrugb.	Koei Vrugbaarheid
Longevity	Longev.	Lankl.	Lanklewendheid
Mature Weight	Mat. Wt.	Volw. Gewig	Volwasse gewig
Average Daily Gain (g/day)	ADG	GDT	Gemiddelde Daaglikse Toename
Feed Conversion Ratio (kg:kg)	FCR	VOV	Voeromset Verhouding
Eye Muscle Area	EMA	OSO	Oogspier grootte
Backfat Thickness	Fat	Vet	Rugvet Diepte
Marbeling (intra-muscular fat)	Mar	Mar	Marmering (binne-spierse vet)
365-day weight index	365D Index	365D Indeks	365-dae gewig indeks
540-day weight index	540D Index	540D Indeks	540-dae gewig indeks
Length-Height ratio	LH	LH	Lengte-Hoogte Verhouding
Actual Birth weight	Birth Wt.	Geb. gewig	Werklike Geboorte gewig
205-day Dam-age corrected weight	205d Wt.	205d gewig	205-dag Moeder-ouderdom gekorrigeerde gewig
Cow-Calf Birth Ratio	CCG	KKG	Koei-Kalf Geboorte Verhouding
Cow-Calf Wean Ratio	CCW	KKS	Koei-Kalf Speen Verhouding
Average Weaning Index	Avg. Wean Index	Gem. Spn. Indeks	Gemiddelde speen indeks
Number of Calves	Nr. Calves	Aant. Kalw.	Aantal kalwers
Reproduction Index	Repr. Index	Repr. Indeks	Reproduksie indeks
Animal sex: M - Male, F - Female	M / F	M / V	Dier geslag: M - Manlik, V - Vroulik