

PRODUCTION SALE

Milagro

PRODUCTIVE • PROFITABLE • PERFORMANCE

SATURDAY
14 OCTOBER 2023
11H00 - OYSTER BAY, EASTERN CAPE



THE COMMERCIAL HERD ...

... with a touch of class

ON OFFER:

- 28 Registered Black & Red Angus Bulls
- 1 Registered Charolais Bull
- 7 Registered Simmentaler Bulls
- 25 Registered Angus Females
- 15 Commercial Angus Females
- 15 Hampshire Down Rams
- 20 Hampshire Down Ewes



ENQUIRIES:

JACO ZIETSMAN (MARKETER)
MARINUS MEYER (MARKETER)
JAN ERASMUS (MANAGER, HUMANSDORP)
ANDREW MASTERSON (SELLER)
AUCTIONEER: CARL MALHERBE

082 373 7889
082 542 7446
082 924 6096
082 321 1462
082 496 3446

VISIT US AT WWW.BKB.CO.ZA

AUCTIONEERS:
RHEBOK STRAAT, INDUSTRIAL AREA
HUMANSDORP
TELL : 087 820 4532
REG. NR. 98/12435/06

TERMS: Electronic payments only on day of auction. 2% Handling Fee will be charged on all card transactions. Electronic transfer facilities available. FICA documentation is required during registration process. All goods are sold at a reserve price and there is a right to bid by or on behalf of the owner or auctioneer, unless otherwise indicated. The regulation of the Consumer Protection Act, 2008 is available at <http://www.gov.za/documents/consumer-protection-act-regulations>. View the auction rules at www.bkb.co.za.

BKB
LIVESTOCK &
AUCTIONEERING

BKB



Welcome to the auction.

WELCOME

On behalf of Colette and myself and the Milagro team, we would like to extend a warm welcome to all of you and would like to thank you for attending our sale.

A hearty welcome to our guest sellers, Heinrich Janse van Rensburg, Paul & Pye Moore, Rob & Anneline Parker, Jaco Smit and Jacques Steenkamp. Your enthusiasm and commitment to the sale has been exceptional, dealing with you and selecting your animals has been an honour and pleasure.

We have selected some of the very best bulls and females out of the Milagro herd to be part of our sale offering here today. We are proud to offer them for sale and believe that they will be an asset to any herd, stud or commercial. Today also marks the sale of our very first Charolais with hopefully many more to come.

We guarantee the soundness of all our cattle and are sure that they will adapt to any environment. All Milagro cattle are sire verified by DNA testing through Unistel laboratories.

I would like to thank all our sponsors who have contributed towards the hosting of our sale. Your support is much appreciated.

All cattle have been vaccinated with Covexin, Cattlemaster, Botuthrax and Lumpy Skin. The herd is CA and TB free and the certificates are available on request.

We will assist with transport to central destinations.

Next year we will be hosting the Milagro Extravaganza Sale, on Saturday, 12 October 2024. Be sure to mark that on your calendars!

Enjoy your day with us!

Andrew & Colette



THANK YOU TO OUR SPONSORS



Standard
Bank



Voermol

What nature lacks -
Voermol will provide



Embrio Plus



THANK YOU TO OUR SPONSORS



ALWAYS READY TO SERVE



zoetisTM

**PRINTED ADVERT WILL BE INSERTED HERE
- THE ADVERT IS DOUBLE SIDED -**

Additional info

Lot no.	Details	Colour	ID. No.	Comments
1	Bull	Charolais	ACM2002	An outstanding bull! Total outcross genetics with him being an imported embryo from Canada. Eye catching, deep and broad right through. The balanced package that moves with so much ease. He weaned at 322kg. We weaned two of his calves, one heifer and one bull and they weaned at an average of 310kg.
2	Bull	Black Angus	ACM2146	A very correct bull. Easy fleshing and good depth.
3	Bull	Black Angus	ACM2119	Outstanding bull! A great combination of the Black Pride and Power families. Very good width and muscling with phenomenal figures.
4	Bull	Black Angus	ACM2152	Eye catching and stylish, the balanced package. He is from a very fertile maternal line and his dam has an ICP of 362 day over 8 calves.
5	Bull	Black Angus	ACM2153	A Quebec son, who is very correct, with good length and depth with great figures to back it all up.
6	Bull	Black Angus	ACM2133	Stud bull potential! He is a Quebec son out of the Sky Rito maternal line. A family with lots of longevity and fertility. He is the complete package.
7	Bull	Black Angus	ACM2174	Outstanding genetics! Desert Storm out of Black Pride. His dam boasts an ICP of 308 days over 8 calves. Stud bull potential!!!
8	Bull	Red Angus	ACM2158	A Domain son out of the original Woodview Varnish maternal line. He will be easy to use in any environment and conditions. Good fertility on his maternal side
9	Bull	Red Angus	RHP210271	Axle is a young bull with tremendous potential and presence. He is the whole package.
10	Bull	Red Angus	ACM2127	A very impressive individual! He is a Bullseye son out of a very fertile maternal line with an ICP of 363 days over 9 calves. He weaned at 333kg.
11	Bull	Red Angus	ACM2162	Outstanding genetics with great growth potential. He weaned at 322kg.
12	Bull	Black Angus	ACM2148	A well balanced bull that can be used anywhere. He is from a very fertile maternal line with an ICP of 360 days over 8 calves.
13	Bull	Black Angus	ACM2151	Great genetic combination with the Milagro Power family on the sire side and Bonhaven Honey, who was a Mequatling Royal Flush daughter, on the maternal side. He is compact with great muscling with outstanding figures to back it all up.
14	Bull	Black Angus	ACM2161	He is an DMM Int. 54D son, the 2018 Supreme Champion of the World. A bull with great potential and lots of depth.
15	Bull	Black Angus	ACM21107	Stud sire!! A Milagro Tequila son from the Milagro Power family on the maternal side. His grand dam was the 2017 Supreme National Champion Black Angus and Gold Cup winner at many shows. He shows outstanding masculinity with great figures to back it all up.
16	Bull	Black Angus	ACM21112	A easy to use, eye catching bull
17	Bull	Red Angus	ACM2157	He is a Custom Made son, with an Elite Bronze dam. A bull with outstanding width right through.
18	Bull	Red Angus	ACM2143	This bull is very correct and shows great balance right through. He weaned at 308kg
19	Bull	Red Angus	ACM2155	A Razor son, going back on the maternal side to the Bonhaven Penny family. He has got very good length of body.
20	Bull	Black Angus	ACM2117	He is a Quebec son with a 120 milk index and a weaning weight of 322kg. He is very correct and easy to use.
21	Bull	Black Angus	ACM2135	Another Quebec son, going back to Bohaven Penny, who as a Mequatling Roya Flush daughter. A bull with great length
22	Bull	Black Angus	ACM2156	A very muscled individual with a milk index of 125. He is going to breed weaners!
23	Bull	Black Angus	ACM21106	Another Milagro Tequila son from the Milagro Power family on the maternal side. His grand dam was the 2017 Supreme National Champion Black Angus and Gold Cup winner at many show with great figures to back it all up. Open your heifers up with him!!
24	Bull	Red Angus	ACM2163	He is a Racer son, going back to the Bonhaven Penny family on the maternal side. A bull with overall great length of body.
25	Bull	Red Angus	ACM2178	Another Racer son, out of the Milagro Elle family. Use him on your heifers
26	Comm. Bull	Black Angus	ACM2167E	
27	Bull	Simmentaler	ACM2120	The complete package. Outstanding growth figures. Stud bull!!!!
28	Bull	Simmentaler	ACM2130	A very well balanced bull out of a great 3 star dam
29	Bull	Simmentaler	ACM2134	A good bull to use on heifers
30	Bull	Simmentaler	ACM2140	He is very correct and will be easy to use.
31	Bull	Simmentaler	ACM2131	Great growth figures. He will breed heavy weaners
32	Bull	Simmentaler	ACM212	Use him to beef up your weaner crop! A Reactor son with out of the park growth figures. He weaned at 347kg.
33	Bull	Simmentaler	ACM214	A Reactor out of Amy 1471. A long later maturing bull. He weaned at 337kg
34	Preg. Cow	Black Angus	ACM2011	Easy Decision daughter out of a very fertile maternal family line. In calf to De Panne Locomotive DE17002, due 09/01/2024.
35	Preg. Heifer	Black Angus	ACM2142	Show material! Very stylish heifer, sired by Quebec with great figures. In calf to SAV Waterfall, due 02/03/2024.
36	Preg. Heifer	Black Angus	ACM2150	A great grand daughter of Woodview Black Pride 7471. In calf to Milagro Quebec ACM1704, due 02/03/2024.
37	Cow and calf	Black Angus	ACM2121	First calver, selling with a beautiful 2.5 month old heifer calf (ACM2375) at foot, sired by SAV Waterfall
38	Cow and calf	Black Angus	ACM2145	Insight daughter out of the Sky Rito family. Selling with a 5 week old bull calf (ACM2392), sired by Attractive
39	Preg. Heifer	Red Angus	RHP200233	A structually sound heifer with all the attributes to add value to any herd. Approximately 6 months certified pregnant to Red DKF Razor
40	Preg. Heifer	Red Angus	RHP210234	An excellent well balanced heifer that stands out. Approximately 6 months certified pregnant to Red DKF Razor.
41	Preg. Heifer	Red Angus	RHP210249	A feminine heifer with all the correct attributes. Approximately 3 months certified pregnant to Milagro Twitch ACM2028
42	Cow and calf	Red Angus	ACM2125	A Bullseye daughter with very good figures. She is selling with a 5 week old bull calf (ACM2391), sired by Township
43	Cow and calf	Red Angus	ACM2141	She is a Domain daughter out of the well known Milagro Elle family. Due to calf on 12/10/2023 from Hedge Fund
44	Cow and calf	Black Angus	ACM2124	Another stylish Quebec daughter with good figures. She is selling with a 5 week old bull calf (ACM2390), sired by De Panne Locomotive DE17002
45	Cow and calf	Black Angus	ACM2139	She is a great grand daughter of Woodview Black Pride 7471 and selling with a 7 week old bull calf (ACM2384), sired by Milagro Quebec ACM1704
46	Preg. Cow	Black Angus	ACM2020	A pregnant cow, with good figures. In calf to Milagro Unit ACM2123, due 09/01/2024
47	Preg. Heifer	Black Angus	ACM2122	An Insight daughter out of a very fertile maternal family line, boasting a ICP of 349 days over 9 calves. In calf to Milagro Quebec ACM1704, due 16/10/2023
48	Preg. Heifer	Black Angus	ACM21104	A pregnant heifer, with a milk index of 112. Her dam has got an ICP of 361 days over 6 calves. In calf to De Panne Locomotive DE17002, due 02/03/2024
49	Female	Red Angus	RHP210250	A phenomenal heifer that is structurally very sound and that will undoubtedly breed well. Approximately 3 months certified pregnant to Milagro Twitch ACM2028
50	Preg. Heifer	Red Angus	RHP210260	A heifer with an excellent pedigree that will add value to any herd. Approximately 3 months certified pregnant to Milagro Twitch ACM2028
51	Preg. Heifer	Red Angus	ACM2112	A Bullseye daughter that weaned at 305kg. In calf to Domain, due 19/12/2023
52	Preg. Heifer	Red Angus	ACM2177	She is a Racer daughter with good figures. Her dam has got an ICP of 361 days over 10 calves. In calf to Hedge Fund, due 02/03/2024
53	Preg. Heifer	Red Angus	ACM2134	A Trump daughter and grand daughter of Milagro Elle 1210, National Champion female 2019. In calf to Hedge Fund, due 23/03/2024
54	Preg. Heifer	Black Angus	Commercial	3 x Pregnant heifers 5 to 6 mnths
55	Preg. Heifer	Black Angus	Commercial	3 x Pregnant heifers 5 to 6 mnths
56	Preg. Heifer	Red Angus	Commercial	3 x Pregnant heifers 5 to 6 mnths
57	Preg. Heifer	Red Angus	Commercial	3 x Pregnant heifers 5 to 6 mnths



CHAROLAIS



SA STAMBOEK
STUD BOOK



Three generation pedigree

compiled by the S.A. Stud Book and Animal Improvement Association

CHAROLAIS



0552145000
ANDREW MASTERSON FAMILY TRUST
P.O. BOX 117
HUMANSDORP
6300

P.G. Sire:
HORN STATUS
BHD PERSEUS B65 P - 01/01/87
B65P 0090901844
Section - DNA No

Sire:
HORN STATUS
DC/CRJ TANK E108 P - 08/02/17
E108 0090906504
Section SP

P.G. Dam:
HORN STATUS
CRJ MS ZYLEN C1587 - 01/01/87
C1587CHL 0090901851
Avg. ICP: () AFC: * (BWR: -)
Section - DNA No

DNA No U2299U006



Name MILAGRO TANK 2003E

Ident. number: ACM 200003
Reg. number: 0090934795
Birth Date: 21/08/20
Sex: Male
DNA No: U2350U003
INBREEDING: -%
Section: SP
Subsection:

M.G. Sire:
HORN STATUS
SVY BLITZ 125Y - 01/01/90
125Y 0090892837
Section - DNA No

Dam:
HORN STATUS
GERRARD EVETTA 2A - 01/01/13
GCC 2A 0090906157
Section SP

M.G. Dam:
HORN STATUS
GERRARD EVETTA 2L - 01/01/90
2L 0090892720
Avg. ICP: () AFC: * (BWR: -)
Section - DNA No

Avg. ICP: - (-) AFC: * (BWR: -)
Calving: -

DNA No U2299U001

HORN STATUS:

Selection Value	CALVING EASE		MILK	CALF GRWTH	MAINTENANCE		GROWTH TEST					FERTILITY		COW VALUE	GROWTH VALUE	PRODUCTION VALUE
	Birth wght	Birth Mat.			Milk	Post wean	Mature wght	ADG	Kleiber	FCR	Length	Height	SC			
	-	-	-	-	-	-	-	-	-	-	-	-	-	-	-	-
EBV Index	-	-	-	-	-	-	-	-	-	-	-	-	-	-	-	-
EBV	-	-	-	-	-	-	-	-	-	-	-	-	-	-	-	-
Measurements	43			322 (100)		521 (100)										

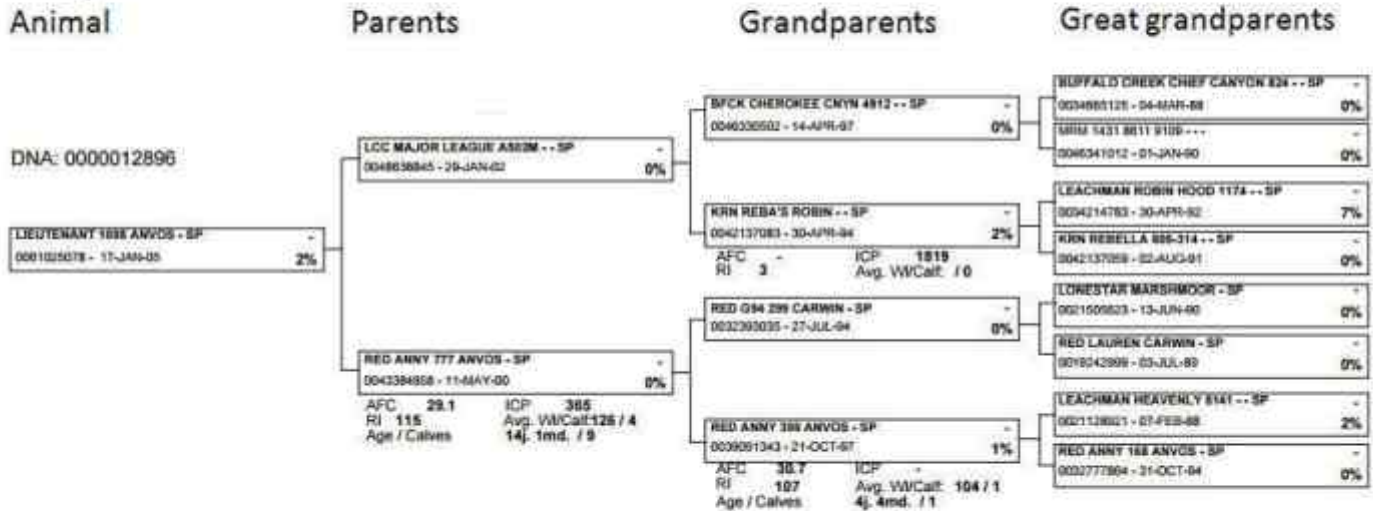


MALE SP

Explanation of catalogue

LOT: Lot number
 Ident.nr: Identification number (Herd + birth year + number)
 Section: SP = Studbook Proper
 Reg.number: SA Stud Book Registration number

Pedigree



AFC: Age at first calving
 ICP: Intercalving period
 RI: Reproduction index
 Avg. Wt/calv: Average Wean Index / Number of calves
 Age / Calves: Age of cow and number of calves

Breeding value index	CALVING EASE		MILK	CALF GRWTH	MAINTENANCE		GROWTH TEST					Semen donor: No Tests: - Vacc: -
	Birth wght	Birth Mat	Milk	Wean wght	12M	Mature wght	ADG	Kleiber	FCR	Frame Score	Height	
Breeding value	117	94	120	104	-	107	105	105	93	101	77	
Weights/Index	-53 ₀₂	.5 ₀₁	12.2 ₀₃	18.4 ₀₁	- ₀₀	35 ₀₁	145 ₀₇	81 ₀₇	-36 ₀₃	29 ₇₁	-2 ₀₄	
	36			270 (100)	- (-)		90	93.3	92.31	1375	-	
Remarks:	*											

EBV ind and EBV: Breeding Value Index and Breeding Value
 (EBVs are also expressed as easily interpretable Breeding Value Index)

Birth wght: Birth Weight
 Birth Mat: Birth Maternal
 Milk: Milk
 Wean wght: Weaning weight
 12M: 12M weight (12- and 18 mnths)
 Mat.wght: Mature weight
 ADG: Average daily gain (growth)
 Kleiber: Kleiber ratio (efficient growth on veld)
 FCR: Feed Conversion Ratio (kg feed/kg Weight gain)
 Length: Body length
 Frame Score: Shoulder or hip height
 Scrotum: Scrotum circumference
 AFC: Age at first calf
 ICP: Intercalving period

Logix Genetic Catalogue

The Selection Values in this catalogue indicate the genetic merit of the animals since all environmental effects have been removed. Selection Values are a combination of relevant breeding values and are based on animals that were scientifically measured according to international norms. Breeding values are estimated from performance of ancestors and progeny, as well as own performance.

Selection Value	What does it measure?	Notes
Cow Value	Genetic merit to breed daughters that are fertile, calve easily, wean heavy calves, have lots of milk and low maintenance requirements.	Combination of the sub-values Calving Ease, Milk, Calf Growth, Maintenance and Fertility.
Growth Value	Bulls /Cows with genetic merit for growth and growth efficiency after weaning.	The animal's genetic merit for growth summarized in a single value.
Production Value	Combination of Cow Value and Growth Value.	Single value that summarizes the genetic merit of the animal.

It is easy to interpret Selection Values:

- Average of the live animals in the breed: 100
- Above 100: more desirable,
- Below 100: less desirable

Sub Value	What does an above breed average value (100) mean?
Calving Ease	Smaller calf at birth – easier calving
Milk	Cows / daughters with more milk and better mothering traits
Calf Growth	Heavier calf at wean due to growth ability of the calf itself.
Low Maintenance	Animals with lower maintenance requirements (lower mature weight EBVs).
Fertility	Cows / daughters that calve earlier and / or more regularly.

Star Grading	Selection Value
☆	<60
★	60-69
★★	70-79
★★★	80-89
★★★★	90-99
★★★★☆	100-109
★★★★★	110-119
★★★★★	120-129
★★★★★	130-139
★★★★★	>140



Accuracy (Acc):

The amount of information available for breeding value estimation is indicated with an accuracy value (Acc). The accuracy is a value between 0 and 99. Younger animals have lower accuracies than older animals.

A combination of the following information is used to estimate the accuracy:

- **Parents:** Known or unknown; Accuracy of parents' breeding values.
- **Own measurement:** Animal is measured for trait, or genetically correlated trait
- **Progeny:** Number of progeny measured for trait or correlated traits

Wide interpretation of Acc:

- Acc>80%: A lot of information, AI bull, many offspring
- Acc>60%: Animal has measured progeny
- Acc>30%: Animal measured
- Acc <30%: Little information

LOT 2

0552145, ANDREW MASTERSON FAMILY TRUST, P.O. BOX 117, HUMANSDORP, 6300, (T)083-321 2405



Name Ident. number Sex Section Reg. number Birth Date
MILAGRO ACM 210046 MALE SP 0092013267 05-JUN-21

UNDERTAKER 2146 BLACK

DNA: U5968U017

MILAGRO UNDERTAKER 2146 - SP
 0092013267 - 05-JUN-21 2%

MILAGRO REFLEX 1802 - SP
 0087291738 - 04-MAR-18 2%

MILAGRO ELLE 1729 - SP
 0085965606 - 12-JUL-17 0%

AFC 29 ICP 265
 RI 111 Avg. Wt/Calf: 95 / 2
 Age / Calves 3j.10m. / 3

- SOO LINE LOCOMOTIVE 1403 - SP
 0084052398 - 11-NOV-11 0%

MILAGRO ELLE 1603 - SP
 0083387092 - 11-JAN-16 3%

AFC 26 ICP 399
 RI 111 Avg. Wt/Calf: 109 / 4
 Age / Calves 6j.6m. / 5

- RED SIX MILE GRAND SLAM 130Z - SP
 0081190043 - 27-FEB-12 0%

MILAGRO ELLE 1203E - SP
 0075623165 - 15-APR-12 0%

AFC 29 ICP 367
 RI 107 Avg. Wt/Calf: 101 / 8
 Age / Calves 9j.5m. / 8

- SOO LINE MOTIVE 9016 - -
 0084051952 - 01-JAN-02 0%
 - SHADY BROOK EVERENTENSE 2039 - -
 0084052117 - 01-JAN-02 0%

- S A V RECORD HARVEST 2186 - SP
 0078921103 - 28-FEB-12 3%

MILAGRO ELLE 1319 - SP
 0078780731 - 02-SEP-13 0%

- RED VGW GAME PLAN 816 - -
 0081179541 - 01-JAN-90 0%

- RED SIX MILE REBECCA 216X - -
 0081179616 - 01-JAN-90 0%

- RED LAZY MC CC DETOUR 2W - SP
 0073323305 - 15-JAN-09 0%

NICELLE ELLE 09 - SP
 0061153672 - 22-JUN-05 1%

CALVING EASE		MILK	CALF GRWTH	MAINTENANCE		GROWTH TEST					Semen donor: No Tests:Phase A
****		****	***	****		ADG	Kleiber	FCR	Raam Punt	Length	
Birth wght	Birth Mat.	Milk	Wean wght	12M	Mature wght	ADG	Kleiber	FCR	Raam Punt	Length	Vacc. -
113	102	110	95	95	88	102	105	102	96	97	
.32 ₆₈	.29 ₄₁	8.8 ₄₃	20.4 ₆₃	37.8 ₃₆	24.4 ₃₅	214 ₂₈	120.8 ₂₈	-84 ₁₀	-3.31	40.9 ₃₀	
Breeding value index			Weights/Index		Remarks: A very correct bull. Easy fleshing and good depth.						

LOT 3

0552145, ANDREW MASTERSON FAMILY TRUST, P.O. BOX 117, HUMANSDORP, 6300, (T)083-321 2405



Name Ident. number Sex Section Reg. number Birth Date
MILAGRO ACM 210019 MALE SP 0091751925 17-MAR-21

ULTIMATE 2119 BLACK

DNA: U4347U040

MILAGRO ULTIMATE 2119 - SP
 0091751925 - 17-MAR-21 2%

MILAGRO QUEBEC 1704 - SP
 0085165330 - 09-FEB-17 1%

MILAGRO BLACK PRIDE 1849 - SP
 0087499109 - 06-AUG-18 8%

AFC 31 ICP 364
 RI 100 Avg. Wt/Calf: 109 / 2
 Age / Calves 3j.7m. / 2

- VISION UNANIMOUS 1418 - SP
 0081835035 - 22-JAN-11 0%

MILAGRO POWER 1324 - SP
 0078780798 - 14-SEP-13 2%

AFC 29 ICP 368
 RI 109 Avg. Wt/Calf: 111 / 3
 Age / Calves 8j.8m. / 6

MILAGRO PAXTON 1602 - SP
 0083387084 - 07-JAN-16 0%

MILAGRO BLACK PRIDE 1528E - SP
 0083270215 - 07-SEP-15 8%

AFC 35 ICP 426
 RI 99 Avg. Wt/Calf: 107 / 4
 Age / Calves 7j.6m. / 5

- VISIONTOPLINE STOCKMAN - -
 0081833998 - 01-JAN-06 0%

- VISION EDELLA 665 - -
 0081834509 - 01-JAN-06 0%

MEQUATLING CASH - SP
 0068967884 - 15-JUN-09 1%

WOODVIEW POWER 6 156 - SP
 0064207095 - 19-JUL-06 1%

- S A V RECORD HARVEST 2186 - SP
 0078921103 - 28-FEB-12 3%

MILAGRO ELLE 1208E - SP
 0075623157 - 19-APR-12 0%

- S A V HARVESTOR 0338 - SP
 0075795088 - 18-APR-10 5%

WOODVIEW BLACK PRIDE 7 471 - SP
 0064821291 - 24-JUL-07 4%

CALVING EASE		MILK	CALF GRWTH	MAINTENANCE		GROWTH TEST					Semen donor: No Tests:Phase A
***		*****	*****	***		ADG	Kleiber	FCR	Raam Punt	Length	
Birth wght	Birth Mat.	Milk	Wean wght	12M	Mature wght	ADG	Kleiber	FCR	Raam Punt	Length	Vacc. -
103	92	128	134	134	117	121	111	118	125	130	
1.21 ₆₉	.7 ₄₂	13.8 ₄₂	39.2 ₆₄	68.9 ₃₂	58.1 ₃₇	298 ₂₅	137.2 ₂₅	-115 ₁₅	1.9 ₂₈	74.4 ₂₇	
Breeding value index			Weights/Index		Remarks: Outstanding bull. A great combination of the Black Pride and Power families. Very good width and muscling with phenomenal figures.						

LOT 4

0552145, ANDREW MASTERSON FAMILY TRUST, P.O. BOX 117,HUMANSDORP,6300, (T)083-321 2405



Name Ident. number Sex Section Reg. number Birth Date
MILAGRO ACM 210052 MALE SP 0092227487 17-JUL-21
UNITE 2152 BLACK

DNA: U5968U023

MILAGRO UNITE 2152 - SP
 0092227487 - 17-JUL-21 2%

MILAGRO REFLEX 1802 - SP
 0087291738 - 04-MAR-18 2%

SCHEEPERSRUST CBR BIG MAMMA 292 - SP
 0081527442 - 03-JUL-14 2%

AFC 25 ICP 362
 RI 119 Avg. Wt/Calf: 98 / 6
 Age / Calves 8j.11m. / 8

- SOO LINE LOCOMOTIVE 1403 - SP
 0084052398 - 11-NOV-11 0%

MILAGRO ELLE 1603 - SP
 0083387092 - 11-JAN-16 3%

AFC 26 ICP 399
 RI 111 Avg. Wt/Calf: 109 / 4
 Age / Calves 6j.6m. / 5

MEQUATLING FORTRESS - SP
 0069054740 - 26-AUG-09 2%

SCHEEPERSRUST CBR BIG MAMMA 9105 - SP
 0069392009 - 01-JUL-09 4%

AFC 36 ICP 442
 RI 92 Avg. Wt/Calf: 107 / 5
 Age / Calves 9j.1m. / 6

- SOO LINE MOTIVE 9016 - -
 0084051952 - 01-JAN-02 0%

- SHADY BROOK EVERENTENSE 2039 - -
 0084052117 - 01-JAN-02 0%

- S A V RECORD HARVEST 2186 - SP
 0078921103 - 28-FEB-12 3%

MILAGRO ELLE 1319 - SP
 0078780731 - 02-SEP-13 0%

MEQUATLING FORT KNOX - SP
 0065069718 - 11-SEP-07 1%

MEQUATLING BLOSSOM - SP
 0061403705 - 02-SEP-05 1%

MEQUATLING BOOMSHALAKA - SP
 0062845052 - 02-JUL-06 2%

MEQUATLING BIG MAMMA 018 - SP
 0043411628 - 08-JUL-00 0%

CALVING EASE		MILK		CALF GRWTH		MAINTENANCE		GROWTH TEST					Semen donor: No	
****		****		***		***							Tests:Phase A	
Birth wght	Birth Mat.	Milk	Wean wght	12M	Mature wght	ADG	Kleiber	FCR	Raam Punt	Length	Vacc. -			
113	100	117	106	106	108	115	117	112	104	108				
.35 ₇₀	.39 ₄₅	10.6 ₄₆	25.3 ₆₅	46.2 ₃₂	47.8 ₂₆	274 ₂₈	151.8 ₂₆	-104 ₁₇	.3 ₂₉	51.7 ₂₈				
38			236 (90)	- (-)		-	117.	112	-	-				

Remarks:
 Eye catching and stylish, the balanced package. He is from a very fertile maternal line and his dam has an ICP of 362 days over 8 calves.

LOT 5

0552145, ANDREW MASTERSON FAMILY TRUST, P.O. BOX 117,HUMANSDORP,6300, (T)083-321 2405



Name Ident. number Sex Section Reg. number Birth Date
MILAGRO ACM 210053 MALE SP 0092231091 17-JUL-21
UPBEAT 2153 BLACK

DNA: U5968U024

MILAGRO UPBEAT 2153 - SP
 0092231091 - 17-JUL-21 2%

MILAGRO QUEBEC 1704 - SP
 0085165330 - 09-FEB-17 1%

GREENFIELD MJK17033 - SP
 0086088341 - 23-OCT-17 26%

AFC 31 ICP 362
 RI 111 Avg. Wt/Calf: 100 / 3
 Age / Calves 4j.6m. / 3

- VISION UNANIMOUS 1418 - SP
 0081835035 - 22-JAN-11 0%

MILAGRO POWER 1324 - SP
 0078780798 - 14-SEP-13 2%

AFC 29 ICP 368
 RI 109 Avg. Wt/Calf: 111 / 3
 Age / Calves 8j.8m. / 6

FREDERICKSBURG BLUE RIDGE - SP
 0075126912 - 22-MAY-12 2%

- MJK 150001 - SP
 0082607714 - 30-JUN-15 1%

AFC 28 ICP 344
 RI 109 Avg. Wt/Calf: 109 / 2
 Age / Calves 3j.3m. / 2

- VISIONTOPLINE STOCKMAN - -
 0081833998 - 01-JAN-06 0%

- VISION EDELLA 665 - -
 0081834509 - 01-JAN-06 0%

MEQUATLING CASH - SP
 0068967884 - 15-JUN-09 1%

WOODVIEW POWER 6 156 - SP
 0064207095 - 19-JUL-06 1%

- G A R PREDESTINED - SP
 0070729736 - 16-AUG-99 0%

WOODVIEW FRED'S MAGGIE 318 - SP
 0048183610 - 15-AUG-03 3%

FREDERICKSBURG BLUE RIDGE - SP
 0075126912 - 22-MAY-12 2%

SCHEEPERSRUST katelyn 7 - SP
 0078183472 - 29-JUN-13 2%

CALVING EASE		MILK		CALF GRWTH		MAINTENANCE		GROWTH TEST					Semen donor: No	
***		****		*****		***							Tests:Phase A	
Birth wght	Birth Mat.	Milk	Wean wght	12M	Mature wght	ADG	Kleiber	FCR	Raam Punt	Length	Vacc. -			
93	93	113	133	133	118	116	108	107	123	128				
2.17 ₆₉	.66 ₄₄	9.4 ₄₂	40.7 ₆₃	67.8 ₃₆	59.8 ₃₁	278 ₂₃	129.5 ₂₃	-94 ₂₁	1.8 ₂₆	72.6 ₂₅				
30			256 (102)	- (-)		-	108.	107	-	-				

Remarks:
 A Quebec son, who is very correct, with good length and depth with great figures to back it all up.

LOT 6

0552145, ANDREW MASTERSON FAMILY TRUST, P.O. BOX 117,HUMANSDORP,6300, (T)083-321 2405



Name Ident. number Sex Section Reg. number Birth Date
MILAGRO ACM 210033 MALE SP 0091889196 24-APR-21
UPSIDE 2133 BLACK

DNA: U4906U003

MILAGRO UPSIDE 2133 - SP -
 0091889196 - 24-APR-21 2%

MILAGRO QUEBEC 1704 - SP -
 0085165330 - 09-FEB-17 1%

MILAGRO SKY RITO 1630E - SP -
 0084897743 - 18-JUL-16 1%

AFC 32 ICP 387
 RI 108 Avg. Wt/Calf: 97 / 3
 Age / Calves 6j.11m. / 5

- VISION UNANIMOUS 1418 - SP -
 0081835035 - 22-JAN-11 0%

MILAGRO POWER 1324 - SP -
 0078780798 - 14-SEP-13 2%

AFC 29 ICP 368
 RI 109 Avg. Wt/Calf: 111 / 3
 Age / Calves 8j.8m. / 6

- S A V HARVESTOR 0338 - SP -
 0075795088 - 18-APR-10 5%

WOODVIEW SKY RITO B MAX - SP -
 0046435053 - 23-JUL-02 0%

AFC 26 ICP 354
 RI 114 Avg. Wt/Calf: 100 / 12
 Age / Calves 15j.1m. / 14

- VISIONTOPLINE STOCKMAN -- -
 0081833998 - 01-JAN-06 0%
 - VISION EDELLA 665 -- -
 0081834509 - 01-JAN-06 0%

MEQUATLING CASH - SP -
 0068967884 - 15-JUN-09 1%

WOODVIEW POWER 6 156 - SP -
 0064207095 - 19-JUL-06 1%

- S A V HERITAGE 6295 - SP -
 0068974229 - 01-MAR-06 1%

- S A V EMBLYNETTE -- -
 0075795070 - 01-JAN-06 0%

- BASIN MAX 602C - SP -
 0042137141 - 06-FEB-93 2%

WOODVIEW SKY RITO WANTON - BS -
 0041936154 - 10-JUL-98 -9%

CALVING EASE ***	MILK *****	CALF GRWTH *****	MAINTENANCE ***	GROWTH TEST					Semen donor: No Tests:Phase A			
				Birth wght	Birth Mat.	Milk	Wean wght	12M	Mature wght	ADG	Kleiber	FCR
102	93	113	125	125	104	114	112	105	111	112		
1.3 ₆₉	.68 ₄₇	9.4 ₄₆	35 ₆₄	61.4 ₃₇	43.1 ₃₄	268 ₂₉	138.4 ₂₉	-90 ₂₁	.8 ₃₀	56.3 ₃₀		
40		271 (96)	- (-)			-	112.	105	-	-		

Remarks:
 Stud bull potential. He is a Quebec son out of the Sky Rito maternal line. A family with lots of longevity and fertility. He is the complete package.

LOT 7

0552145, ANDREW MASTERSON FAMILY TRUST, P.O. BOX 117,HUMANSDORP,6300, (T)083-321 2405



Name Ident. number Sex Section Reg. number Birth Date
MILAGRO ACM 210074 MALE SP 0092390277 20-AUG-21
UNLIMITED 2174 BLACK

DNA: U6947U008

MILAGRO UNLIMITED 2174 - SP -
 0092390277 - 20-AUG-21 5%

- SIX MILE DESERT STORM 94D - SP -
 0091471771 - 19-FEB-16 2%

MILAGRO BLACK PRIDE 1447 - SP -
 0081131401 - 09-SEP-14 8%

AFC 31 ICP 308
 RI 120 Avg. Wt/Calf: 103 / 6
 Age / Calves 8j.0m. / 7

- BAR-H CROSSFIRE 63A -- -
 0091470864 - 01-JAN-13 0%

- SIX MILE FALLING ING STAR 219Y -- -
 0091470799 - 01-JAN-08 0%

AFC - ICP -
 RI - Avg. Wt/Calf: / 0
 Age / Calves - / -

- S A V RADIANCE 0801 - SP -
 0079348157 - 09-JAN-10 7%

WOODVIEW BLACK PRIDE 7 471 - SP -
 0064821291 - 24-JUL-07 4%

AFC 25 ICP 375
 RI 116 Avg. Wt/Calf: 101 / 11
 Age / Calves 15j.2m. / 13

- S TITLST 1145 - SP -
 0082412933 - 25-MAR-11 0%

- HF TIBBIE 93U -- -
 0091470856 - 01-JAN-06 0%

- S A V HEAVY HITTER 6347 - SP -
 0071173140 - 06-MAR-06 2%

- ROSE HILL DARK STAR 22P -- -
 0091470781 - 01-JAN-88 0%

- S A V BRILLIANCE 8077 - SP -
 0071479067 - 24-FEB-08 2%

- S A V ELBA 801 -- -
 0079348140 - 01-JAN-06 7%

- S A V 8180 TRAVELER 004 - SP -
 0049335391 - 01-JAN-00 2%

WOODVIEW EXTRA BESS 665 - SP -
 0043585181 - 19-AUG-00 1%

CALVING EASE ***	MILK ***	CALF GRWTH *****	MAINTENANCE ***	GROWTH TEST					Semen donor: No Tests:Phase A			
				Birth wght	Birth Mat.	Milk	Wean wght	12M	Mature wght	ADG	Kleiber	FCR
91	104	99	113	113	103	112	111	116	107	107		
2.35 ₅₆	.22 ₄₀	5.6 ₄₁	33.5 ₅₂	52.2 ₄₄	42.3 ₂₈	260 ₂₉	137.7 ₂₉	-110 ₁₈	.5 ₃₄	50.9 ₃₂		
38		247 (100)	- (-)			-	111.	116	-	-		

Remarks:
 Outstanding genetics. Desert Storm out of Black Pride. His dam boasts an ICP of 308 days over 8 calves. Stud bull potential!



Now in Jeffreys Bay, Eastern Cape



-  Pharmaceuticals
-  Feed Additives
-  Pet Food
-  Pet Accessories

We proudly collaborate with:



Louis

082 376 9212
louis@biofarmcc.co.za

Adele

072 585 9429
salesec@biofarmcc.co.za

Free State, North West, Gauteng, Mpumalanga, Limpopo, and Eastern Cape

LOT 8

0552145, ANDREW MASTERSON FAMILY TRUST, P.O. BOX 117,HUMANSDORP,6300, (T)083-321 2405



Name Ident. number Sex Section Reg. number Birth Date
MILAGRO ACM 210058 MALE SP 0092244862 24-JUL-21

UNDERCURRENT 2158 RED

DNA: U5968U029

MILAGRO UNDERCURRENT 2158 - SP
 0092244862 - 24-JUL-21 0%

- 3SCC DOMAIN A163 - SP
 0085546265 - 26-MAR-13 0%

MILAGRO VARNISH 1759 - SP
 0086571767 - 26-OCT-17 0%

AFC 33 ICP 382
 RI 106 Avg. Wt/Calf: 102 / 3
 Age / Calves 4j.9m. / 3

- BECKTON DOMINOR T122 Z1 --
 0085545978 - 01-JAN-97 0%

- 3SCC EUCLA X723 --
 0085546232 - 01-JAN-03 0%

AFC - ICP -
 RI - Avg. Wt/Calf: / 0
 Age / Calves - / -

MILAGRO NADAL 1441 - SP
 0080205461 - 04-SEP-14 0%

MILAGRO VARNISH 1426 - SP
 0080205453 - 09-AUG-14 0%

AFC 28 ICP 312
 RI 113 Avg. Wt/Calf: 105 / 3
 Age / Calves 5j.8m. / 5

- BECKTON DOMINOR Z1 R610 --
 0085538676 - 01-JAN-95 0%

- BKT LARKABEL R038 WA --
 0085538817 - 01-JAN-90 0%

- BASIN HOBO 0545 --
 0085546182 - 01-JAN-01 0%

- BSKF EUCLA U278 --
 0085546224 - 01-JAN-90 0%

- RED LAZY MC CC DETOUR 2W - SP
 0073323305 - 15-JAN-09 0%

MILAGRO MILA 1106E - SP
 0075623348 - 14-JUN-11 0%

- RED LAZY MC HONKY TONK 11X - SP
 0075863209 - 01-FEB-10 0%

WOODVIEW VARNISH 09 76 - SP
 0069133700 - 25-AUG-09 0%

CALVING EASE ****	MILK ****	CALF GRWTH ****	MAINTENANCE ****	GROWTH TEST					Semen donor: No Tests:Phase A			
				ADG	Kleiber	FCR	Raam Punt	Length	Vacc. -			
Birth wght	Birth Mat.	Milk	Wean wght	12M	Mature wght	ADG	Kleiber	FCR	Raam Punt	Length		
105	101	112	106	106	94	117	116	114	104	112		
1.06 ₆₉	.35 ₃₉	9.3 ₄₂	27.3 ₆₅	47 ₄₇	31.4 ₂₇	282 ₁₇	149.5 ₁₇	-108 ₁₁	.3 ₁₈	55.6 ₁₈		
Weights/Index			263 (102)	- (-)		-	116.	114	-	-		

Remarks:
 A Domain son out of the original Woodview Varnish maternal line. He will be easy to use in any environment and conditions. Good fertility on his maternal side.

LOT 9

0675681, ANNELINE PARKER TRUST, 30 REITZ ROAD,MILLPARK,PORT ELIZABETH, 6000,(T)082555779



Name Ident. number Sex Section Reg. number Birth Date
BOSCHKLOOF RHP 210271 MALE SP 0093422061 24-DEC-21

AXLE RED

DNA: U12997U003

BOSCHKLOOF AXLE - SP
 0093422061 - 24-DEC-21 1%

MEQUATLING WB150335 - SP
 0082160383 - 01-AUG-15 0%

BOSCHKLOOF RHP 180083 - SP
 0087377248 - 12-JUL-18 1%

AFC 41 ICP 392
 RI 85 Avg. Wt/Calf: 99 / 1
 Age / Calves 4j.6m. / 2

- RED BADLANDS CAPACITY 37W - SP
 0078088192 - 23-FEB-09 0%

MEQUATLING BREEZEY 100148 - SP
 0071196216 - 13-AUG-10 0%

AFC 24 ICP 420
 RI 93 Avg. Wt/Calf: 104 / 8
 Age / Calves 10j.0m. / 8

MILAGRO LENNOX 1233 - SP
 0078023975 - 21-OCT-12 0%

PARKER DJP 140300 - SP
 0080231962 - 13-OCT-14 0%

AFC 31 ICP 399
 RI 104 Avg. Wt/Calf: 113 / 3
 Age / Calves 6j.11m. / 5

- RED UBAR HIGH CAPACITY 224 --
 0078088184 - 01-JAN-95 0%

- RED BADLANDS RED CEDAR 311 --
 0078088176 - 01-JAN-95 0%

- RED FINE LINE MULBERRY 26P - SP
 0069124683 - 31-JAN-04 0%

MEQUATLING BREEZEY 060189 - SP
 0064355696 - 28-AUG-06 0%

- RED 6 MILE FULL THROTTLE 171T - SP
 0068938711 - 19-FEB-07 0%

WOODVIEW RED ECHI 7 713 - SP
 0065579773 - 10-NOV-07 7%

MEQUATLING LOVE WARROIR - SP
 0066591843 - 22-JUN-08 4%

PARKER DJP0833 - SP
 0067730846 - 09-OCT-08 0%

CALVING EASE ***	MILK ***	CALF GRWTH *****	MAINTENANCE ***	GROWTH TEST					Semen donor: No Tests:Phase A			
				ADG	Kleiber	FCR	Raam Punt	Length	Vacc. -			
Birth wght	Birth Mat.	Milk	Wean wght	12M	Mature wght	ADG	Kleiber	FCR	Raam Punt	Length		
93	101	96	126	126	119	116	112	110	109	118		
2.15 ₅₉	.35 ₄₅	4.7 ₄₂	38 ₅₆	62.4 ₃₉	60.6 ₃₁	275 ₃₇	138.4 ₃₇	-99 ₂₂	.7 ₄₂	62 ₄₀		
Weights/Index			267 (99)	- (-)		-	112.	110	-	-		

Remarks:
 Axle is a young bull with tremendous potential and presence. He is the whole package.

LOT 10

0552145, ANDREW MASTERSON FAMILY TRUST, P.O. BOX 117,HUMANSDORP,6300,
(T)083-321 2405



Name Ident. number Sex Section Reg. number Birth Date
MILAGRO ACM 210027 MALE SP 0091751966 06-APR-21
UNLOCK 2127 RED

DNA: U4347U048

MILAGRO UNLOCK 2127 - SP
 0091751966 - 06-APR-21 0%

- RED DOUBLE B BULLSEYE 1B - SP
 0085113207 - 03-FEB-14 0%

HOLVLEI HOL 130001 - SP
 0076821628 - 10-JAN-13 1%

AFC 26 ICP 363
 RI 117 Avg. WI/Calf: 95 / 6
 Age / Calves 10j.1m. / 9

- RED SOO LINE POWER EYE 161X - SP
 0084062942 - 04-FEB-10 0%

- RED BLAIRS PRICILLA 44Z --
 0085113199 - 01-JAN-11 0%

AFC - ICP -
 RI - Avg. WI/Calf: / 0
 Age / Calves - / -

ROELOU SUNNYBOY - SP
 0064064421 - 28-OCT-06 5%

HOLVLEI RED RHONA 0526 - SP
 0063195903 - 24-JUL-05 1%

AFC 27 ICP 385
 RI 113 Avg. WI/Calf: 88 / 8
 Age / Calves 10j.7m. / 9

- RED COCKBURN RIBEYE 308U --

0084062355 - 01-JAN-90 0%
 - RED TR LYNN 301R --
 0084062934 - 01-JAN-00 0%

- RED RINGSTEAD KARGO 215U - SP
 0084934082 - 22-FEB-08 0%

- RED BRYLOR PRISCILLA 67W - SP
 0084936244 - 12-FEB-09 8%

ROELOU GLACIER TOYBOY - SP
 0047732011 - 18-AUG-03 4%

TARZAN SUNLADY 910 - SP
 0042820266 - 03-AUG-99 1%

VANESIA IMPACKER - SP
 0046059671 - 22-MAY-02 1%

WYNLAND MEJ 17 - SP
 0032696668 - 08-OCT-94 0%

CALVING EASE ****	MILK **	CALF GRWTH ****	MAINTENANCE ****	GROWTH TEST					Semen donor: No Tests:Phase A			
				Birth wght	Birth Mat.	Milk	Wean wght	12M	Mature wght	ADG	Kleiber	FCR
94	109	79	103	103	91	95	90	96	98	104	Vacc. -	
2.11 ₇₂	.01 ₅₁	-1.51 ₅₁	30.7 ₆₈	44.4 ₅₁	28.2 ₃₈	179 ₄₂	82.9 ₄₂	-72 ₁₆	-2.46	47.7 ₄₅		
39			285 (102)	- (-)		-	90.	96	-	-		

Remarks:
 A very impressive individual. He is a Bullseye son out of a very fertile maternal line with an ICP of 363 days over 9 calves.
 He weaned at 333kg.

LOT 11

0552145, ANDREW MASTERSON FAMILY TRUST, P.O. BOX 117,HUMANSDORP,6300,
(T)083-321 2405



Name Ident. number Sex Section Reg. number Birth Date
MILAGRO ACM 210062 MALE SP 0092245265 02-AUG-21
UPLIFT 2162 RED

DNA: U5968U033

MILAGRO UPLIFT 2162 - SP
 0092245265 - 02-AUG-21 0%

- RED DKF RAZOR 55C - SP
 0087464236 - 27-JAN-15 1%

MILAGRO MONU 1832 - SP
 0087291985 - 26-APR-18 0%

AFC 26 ICP 335
 RI 123 Avg. WI/Calf: 119 / 2
 Age / Calves 4j.10m. / 4

- DKF ELIMINATOR 15A --
 0087464152 - 01-JAN-05 0%

- DKF MISS NET WORTH 21A --
 0087464210 - 01-JAN-06 0%

AFC - ICP -
 RI - Avg. WI/Calf: / 0
 Age / Calves - / -

- RED SIX MILE CUSTOM MADE 505C - SP
 0085114098 - 01-APR-15 0%

VREDENHEIM VL100022 - SP
 0071802581 - 28-APR-10 1%

AFC 32 ICP 386
 RI 108 Avg. WI/Calf: 99 / 6
 Age / Calves 7j.11m. / 6

- S A V ELIMINATOR 9105 --

0081213084 - 01-JAN-03 0%
 - RED DKF MISS POWER 17P --
 0087464145 - 01-JAN-90 0%

- S A V NET WORTH 4200 - SP
 0063171318 - 03-JUN-04 1%

- DKF MISS POWER UP 95X --
 0087464202 - 01-JAN-85 0%

- RED U2 RECKONING 149A --
 0085113934 - 01-JAN-09 0%

- RED SIX MILE LASSIE 207Z --
 0085114064 - 01-JAN-02 0%

KUILEN BLUE - SP
 0065044984 - 01-AUG-07 2%

WYNLAND MEJ MONU 39 - SP
 0065863953 - 26-DEC-07 3%

CALVING EASE ****	MILK **	CALF GRWTH ****	MAINTENANCE ****	GROWTH TEST					Semen donor: No Tests:Phase A			
				Birth wght	Birth Mat.	Milk	Wean wght	12M	Mature wght	ADG	Kleiber	FCR
90	117	84	114	114	99	121	121	126	123	114	Vacc. -	
2.47 ₇₁	-.33 ₅₃	1.3 ₅₃	34.1 ₆₇	52.9 ₅₄	37.7 ₄₂	302 ₄₈	162.5 ₄₈	-130 ₁₅	1.8 ₅₁	58.5 ₅₀		
37			300 (119)	- (-)		-	121.	126	-	-		

Remarks:
 Outstanding genetics with great growth potential. He weaned at 322kg.

LOT 12

0552145, ANDREW MASTERSON FAMILY TRUST, P.O. BOX 117,HUMANSDORP,6300, (T)083-321 2405



Name Ident. number Sex Section Reg. number Birth Date
MILAGRO ACM 210048 MALE SP 0092231083 25-JUN-21

UPDATE 2148

BLACK

DNA: U5968U019

MILAGRO UPDATE 2148 - SP
 0092231083 - 25-JUN-21 1%

- PVF INSIGHT 0129 - SP
 0081231201 - 17-APR-10 0%

SCHEEPERSRUST CBR QUEEN ELISABETH - SP
 0081527467 - 08-JUL-14 1%

AFC 22 ICP 360
 RI 121 Avg. Wt/Calf: 98 / 6
 Age / Calves 8j,8m. / 8

- S A V BRILLIANCE 8077 - SP
 0071479067 - 24-FEB-08 2%

- PVF MISSIE 790 --
 0081231193 - 01-JAN-02 0%

AFC - ICP -
 RI - Avg. Wt/Calf: / 0
 Age / Calves - / -

MEQUATLING FORTRESS - SP
 0069054740 - 26-AUG-09 2%

SCHEEPERSRUST CBR060016 - SP
 0063250641 - 18-JUL-06 1%

AFC 39 ICP 402
 RI 95 Avg. Wt/Calf: 99 / 6
 Age / Calves 9j,10m. / 7

- S A V BISMARCK 5682 - SP
 0067175786 - 01-FEB-05 1%
 - S A V BLACKCAP MAY 5270 --
 0071479059 - 03-MAR-03 3%

- P V F NEW HORIZON 001 - SP
 0061951851 - 02-JAN-00 0%
 - P V F MISS RAPTOR 024 --
 0081230872 - 01-JAN-97 0%

MEQUATLING FORT KNOX - SP
 0065069718 - 11-SEP-07 1%

MEQUATLING BLOSSOM - SP
 0061403705 - 02-SEP-05 1%

DE-PANNE HOSTAGE - SP
 0047618756 - 08-SEP-03 21%

JARRAHNUP JFT 01 151 - SP
 0046434148 - 25-AUG-01 0%

CALVING EASE ***	MILK ****	CALF GRWTH ***	MAINTENANCE ****	GROWTH TEST					Semen donor: No			
				ADG	Kleiber	FCR	Raam Punt	Length	Tests:Phase A	Vacc. -		
Birth wght	Birth Mat.	Milk	Wean wght	12M	Mature wght	104	111	106	106	93		
1.46 ₇₁	1.05 ₅₀	7.5 ₅₀	22.3 ₆₄	42.2 ₄₁	24.5 ₃₁	222 ₄₁	136.3 ₄₁	-92 ₂₀	.5 ₄₅	37 ₄₄		
Weights/Index			263 (95)	- (-)		-	111.	106	-	-		

Remarks:
 A well balanced bull that can be used anywhere. He is from a very fertile maternal line with an ICP of 360 days over 8 calves.

LOT 13

0552145, ANDREW MASTERSON FAMILY TRUST, P.O. BOX 117,HUMANSDORP,6300, (T)083-321 2405



Name Ident. number Sex Section Reg. number Birth Date
MILAGRO ACM 210051 MALE SP 0092227479 03-JUL-21

UPRISE 2151

BLACK

DNA: U5968U022

MILAGRO UPRISE 2151 - SP
 0092227479 - 03-JUL-21 0%

MILAGRO QUEBEC 1704 - SP
 0085165330 - 09-FEB-17 1%

MILAGRO HONEY 1907 - SP
 0088902564 - 16-APR-19 0%

AFC 27 ICP -
 RI 101 Avg. Wt/Calf: 107 / 1
 Age / Calves 2j,2m. / 1

- VISION UNANIMOUS 1418 - SP
 0081835035 - 22-JAN-11 0%

MILAGRO POWER 1324 - SP
 0078780798 - 14-SEP-13 2%

AFC 29 ICP 368
 RI 109 Avg. Wt/Calf: 111 / 3
 Age / Calves 8j,8m. / 6

- RED SOO LINE POWER EYE 161X - SP
 0084062942 - 04-FEB-10 0%

MILAGRO HONEY 1415 - SP
 0079482584 - 15-MAR-14 0%

AFC 28 ICP 350
 RI 119 Avg. Wt/Calf: 96 / 6
 Age / Calves 9j,0m. / 8

- VISIONTOPLINE STOCKMAN --
 0081833998 - 01-JAN-06 0%

- VISION EDELLA 665 --
 0081834509 - 01-JAN-06 0%

MEQUATLING CASH - SP
 0068967884 - 15-JUN-09 1%

WOODVIEW POWER 6 156 - SP
 0064207095 - 19-JUL-06 1%

- RED COCKBURN RIBEYE 308U --
 0084062355 - 01-JAN-90 0%

- RED TR LYNN 301R --
 0084062934 - 01-JAN-00 0%

- RED LAZY MC HONKY TONK 11X - SP
 0075863209 - 01-FEB-10 0%

BONHAVEN 07101 HONEY 11 89 - SP
 0073758567 - 19-OCT-11 2%

CALVING EASE ***	MILK ****	CALF GRWTH ****	MAINTENANCE ***	GROWTH TEST					Semen donor: No			
				ADG	Kleiber	FCR	Raam Punt	Length	Tests:Phase A	Vacc. -		
Birth wght	Birth Mat.	Milk	Wean wght	12M	Mature wght	113	108	117	118	117		
1.24 ₆₈	.7 ₄₂	9 ₄₂	36.1 ₆₅	63.1 ₃₆	59.4 ₂₉	264 ₂₇	130.2 ₂₇	-113 ₁₃	1.4 ₃₀	60.7 ₂₉		
Weights/Index			273 (107)	- (-)		-	108.	117	-	-		

Remarks:
 Great genetic combination of Milagro Power x Bonhaven Honey x Mequatling Royal Flush. He is compact with great muscling with outstanding figures to back it all up.

LOT 14

0552145, ANDREW MASTERSON FAMILY TRUST, P.O. BOX 117,HUMANSDORP,6300, (T)083-321 2405



Name Ident. number Sex Section Reg. number Birth Date
MILAGRO ACM 210061 MALE SP 0092244896 31-JUL-21

UNLEASH 2161

BLACK

DNA: U5968U032

MILAGRO UNLEASH 2161 - SP
 0092244896 - 31-JUL-21 2%

- DMM INTERNATIONAL 54D - SP
 0086308541 - 12-FEB-16 0%

- S A V INTERNATIONAL 2020 - SP
 0079851747 - 20-FEB-12 7%

- S A V HARVESTOR 0338 - SP
 0075795088 - 18-APR-10 5%
 - S A V EMBLYNETTE 5483 --
 0079851739 - 01-JAN-03 2%

- DMM BLACKBIRD 105A - SP
 0086308426 - 01-JAN-08 0%
 AFC - ICP -
 RI - Avg. Wt/Calv: / 0

- GUMBO GULCH CREED 94S - SP
 0079846911 - 13-FEB-06 0%
 - SOUTHERN OX BLACKBIRD 12J --
 0086308418 - 01-JAN-97 0%

- S A V RADIANCE 0801 - SP
 0079348157 - 09-JAN-10 7%

- S A V BRILLIANCE 8077 - SP
 0071479067 - 24-FEB-08 2%
 - S A V ELBA 801 --
 0079348140 - 01-JAN-06 7%

MILAGRO LADY PHANTOM 1446 - SP
 0081058471 - 08-SEP-14 1%

WOODVIEW LADY PHANTOM 7 554 - SP
 0064922958 - 14-AUG-07 1%
 AFC 25 ICP 365
 RI 117 Avg. Wt/Calv: 96 / 8
 Age / Calves 12j.0m. / 11

- MYTTY IN FOCUS - SP
 0064848542 - 18-FEB-01 0%
 WOODVIEW 05 49 - SP
 0062067418 - 03-OCT-05 1%

AFC 28 ICP 406
 RI 108 Avg. Wt/Calv: 104 / 7
 Age / Calves 7j.11m. / 6

CALVING EASE ***	MILK ****	CALF GRWTH ****	MAINTENANCE ***	GROWTH TEST					Semen donor: No Tests:Phase A			
				ADG	Kleiber	FCR	Raam Punt	Length	Vacc. -			
Birth wght	Birth Mat.	Milk	Wean wght	12M	Mature wght	ADG	Kleiber	FCR	Raam Punt	Length		
98	97	101	111	111	107	118	119	122	109	109		
1.72 ₆₉	.48 ₄₈	6 ₄₈	30.3 ₆₅	50.9 ₄₇	47 ₃₄	286 ₂₉	156.7 ₂₉	-124 ₂₂	.7 ₃₂	53 ₃₁		
Weights/Index			264 (101)	- (-)		-	119.	122	-	-		

Remarks:
 He is an DMM Int. 54D son, the 2018 Supreme Champion of the World. A bull with great potential and lots of depth.

LOT 15

0552145, ANDREW MASTERSON FAMILY TRUST, P.O. BOX 117,HUMANSDORP,6300, (T)083-321 2405



Name Ident. number Sex Section Reg. number Birth Date
MILAGRO ACM 210107 MALE SP 0092674340 14-OCT-21

UNIT TRUST 21107

BLACK

DNA: U6945U011

MILAGRO UNIT TRUST 21107 - SP
 0092674340 - 14-OCT-21 4%

MILAGRO TEQUILA 2001 - SP
 0090307307 - 18-MAR-20 5%

- BUFORD PATHFINDER C304 - SP
 0085718211 - 29-DEC-14 5%

- S A V RESOURCE 1441 - SP
 0078174232 - 07-JAN-11 0%
 - BUFORD ELBA 811Y --
 0085718138 - 01-JAN-07 2%

MILAGRO SKY RITO 1734E - SP
 0085966521 - 16-AUG-17 0%
 AFC 31 ICP 460
 RI 101 Avg. Wt/Calv: 99 / 3
 Age / Calves 5j.1m. / 3

- S A V BRUISER 9164 - SP
 0081988388 - 05-MAR-09 2%
 WOODVIEW SKY RITO B MAX - SP
 0046435053 - 23-JUL-02 0%

- S A V HARVESTOR 0338 - SP
 0075795088 - 18-APR-10 5%

- S A V HERITAGE 6295 - SP
 0068974229 - 01-MAR-06 1%
 - S A V EMBLYNETTE --
 0075795070 - 01-JAN-06 0%

MILAGRO POWER 1605 - SP
 0083387118 - 25-FEB-16 5%

MILAGRO POWER 1324 - SP
 0078780798 - 14-SEP-13 2%
 AFC 29 ICP 368
 RI 109 Avg. Wt/Calv: 111 / 3
 Age / Calves 8j.8m. / 6

MEQUATLING CASH - SP
 0068967884 - 15-JUN-09 1%
 WOODVIEW POWER 6 156 - SP
 0064207095 - 19-JUL-06 1%

AFC - ICP 372
 RI 118 Avg. Wt/Calv: 106 / 6
 Age / Calves 6j.7m. / 5

CALVING EASE ***	MILK *****	CALF GRWTH *****	MAINTENANCE ***	GROWTH TEST					Semen donor: No Tests:Phase A			
				ADG	Kleiber	FCR	Raam Punt	Length	Vacc. -			
Birth wght	Birth Mat.	Milk	Wean wght	12M	Mature wght	ADG	Kleiber	FCR	Raam Punt	Length		
91	88	122	133	133	116	123	118	118	115	120		
2.33 ₆₆	.86 ₄₄	12.1 ₄₄	40 ₅₉	67.7 ₃₅	57.6 ₃₇	308 ₃₅	155.3 ₃₅	-115 ₂₂	1.2 ₃₈	63.8 ₃₇		
Weights/Index			246 (99)	- (-)		-	118.	118	-	-		

Remarks:
 Stud sire. Milagro Tequila son x Milagro Power family. His grand dam was the 2017 Supreme National Champion Black Angus. He shows outstanding masculinity with great figures to back it up.

LOT 16

0552145, ANDREW MASTERSON FAMILY TRUST, P.O. BOX 117,HUMANSDORP,6300,
(T)083-321 2405



Name Ident. number Sex Section Reg. number Birth Date
MILAGRO ACM 210112 MALE SP 0093213338 19-NOV-21

Uzo 21112 BLACK

DNA: U9302U040

MILAGRO Uzo 21112 - SP -
0093213338 - 19-NOV-21 5%

MILAGRO REFLEX 1802 - SP -
0087291738 - 04-MAR-18 2%

MILAGRO CATFACE 1718 - SP -
0085965523 - 18-JUN-17 2%

AFC 30 ICP 352
RI 115 Avg. Wt/Calv: 102 / 4
Age / Calves 5j.4m. / 4

- SOO LINE LOCOMOTIVE 1403 - SP -
0084052398 - 01-NOV-11 0%

MILAGRO ELLE 1603 - SP -
0083387092 - 11-JAN-16 3%

AFC 26 ICP 399
RI 111 Avg. Wt/Calv: 109 / 4
Age / Calves 6j.6m. / 5

MEQUATLING CASH - SP -
0068967884 - 15-JUN-09 1%

MILAGRO CATFACE 1457 - SP -
0081361362 - 19-NOV-14 0%

AFC 31 ICP 468
RI 91 Avg. Wt/Calv: 107 / 2
Age / Calves 3j.10m. / 2

- SOO LINE MOTIVE 9016 -- -

0084051952 - 01-JAN-02 0%

- SHADY BROOK EVERENTENSE 2039 -- -

0084052117 - 01-JAN-02 0%

- S A V RECORD HARVEST 2186 - SP -

0078921103 - 28-FEB-12 3%

MILAGRO ELLE 1319 - SP -

0078780731 - 02-SEP-13 0%

- S A V NET WORTH 4200 - SP -

0063171318 - 03-JUN-04 1%

MEQUATLING LASSIE 1301 - SP -

0043892397 - 02-JUL-01 0%

MILAGRO LEGACY 1221 - SP -

0075866095 - 02-SEP-12 1%

PRINSVLEI CATFACE - SP -

0067436881 - 03-JUL-08 1%

CALVING EASE ****	MILK *****	CALF GRWTH ***	MAINTENANCE ****	GROWTH TEST					Semen donor: No Tests:Phase A			
				Birth wght	Birth Mat.	Milk	Wean wght	12M	Mature wght	ADG	Kleiber	FCR
113	92	121	88	88	96	106	113	106	96	94	Vacc. -	
.33 ₆₇	.69 ₄₂	11.8 ₄₄	16.7 ₆₄	32.7 ₃₅	33.3 ₃₀	233 ₂₇	142 ₂₇	-91 ₁₆	-3 ₂₉	38.1 ₂₈		
37			267 (107)	- (-)		-	113.	106	-	-		

Remarks:
An easy to use, eye catching bull.

LOT 17

0552145, ANDREW MASTERSON FAMILY TRUST, P.O. BOX 117,HUMANSDORP,6300,
(T)083-321 2405



Name Ident. number Sex Section Reg. number Birth Date
MILAGRO ACM 210057 MALE SP 0092244854 23-JUL-21

UNDERCOVER 2157 RED

DNA: U5968U028

MILAGRO UNDERCOVER 2157 - SP -
0092244854 - 23-JUL-21 0%

- RED SIX MILE CUSTOM MADE 505C - SP -
0085114098 - 01-APR-15 0%

LUSAN LPA120002 - SP -
0075807842 - 12-JUL-12 1%

AFC 31 ICP 391
RI 109 Avg. Wt/Calv: 104 / 8
Age / Calves 10j.1m. / 8

- RED U2 RECKONING 149A -- -
0085113934 - 01-JAN-09 0%

- RED SIX MILE LASSIE 207Z -- -
0085114064 - 01-JAN-02 0%

AFC - ICP -
RI - Avg. Wt/Calv: / 0
Age / Calves - / -

HOLVLEI MAJOR - SP -
0070403969 - 10-JUN-09 1%

DE-PANNE MOUMENTS 6 - SP -
0071073647 - 01-SEP-09 1%

AFC 34 ICP 425
RI 101 Avg. Wt/Calv: 97 / 9
Age / Calves 12j.2m. / 9

- RED U2 RECON 192Y -- -

0085113736 - 01-JAN-07 0%

- RED U2 ANEXA 271Y -- -

0085113926 - 01-JAN-04 0%

- RED BASIN EXT 45T5 -- -

0085113975 - 01-JAN-00 0%

- RED SIX MILE LASSIE 377P -- -

0085114049 - 01-JAN-95 0%

- LCC MAJOR LEAGUE A502M - SP -

0048638845 - 29-JAN-02 0%

MAKOJALO 04 0285 - SP -

0061152898 - 17-NOV-04 2%

DE-PANNE TOP GRADE - SP -

0066287152 - 19-AUG-07 8%

DE-PANNE FOUR MOMENTS 3DE - SP -

0062311261 - 06-OCT-05 0%

CALVING EASE *****	MILK ***	CALF GRWTH ***	MAINTENANCE *****	GROWTH TEST					Semen donor: No Tests:Phase A			
				Birth wght	Birth Mat.	Milk	Wean wght	12M	Mature wght	ADG	Kleiber	FCR
108	122	89	98	98	80	91	89	96	95	97	Vacc. -	
.75 ₇₂	-.54 ₅₇	2.6 ₅₈	24 ₆₉	40.3 ₅₆	15.1 ₄₄	165 ₄₇	82.2 ₄₇	-71 ₁₆	-.4 ₅₁	40.4 ₅₀		
35			246 (95)	- (-)		-	89.	96	-	-		

Remarks:
He is a Custom Made son, with an Elite Bronze dam. A bull with outstanding width right through.

LOT 18

0552145, ANDREW MASTERSON FAMILY TRUST, P.O. BOX 117,HUMANSDORP,6300,
(T)083-321 2405



Name Ident. number Sex Section Reg. number Birth Date
MILAGRO ACM 210043 MALE SP 0092013234 13-MAY-21
UPTON 2143 RED

DNA: U5968U014

MILAGRO UPTON 2143 - SP
0092013234 - 13-MAY-21 0%

- RED DOUBLE B BULLSEYE 1B - SP
0085113207 - 03-FEB-14 0%

LUSAN LPA130026 - SP
0078191822 - 14-SEP-13 3%

AFC 29 ICP 374
RI 113 Avg. Wt/Calf: 97 / 8
Age / Calves 9j.7m. / 8

- RED SOO LINE POWER EYE 161X - SP
0084062942 - 04-FEB-10 0%

- RED BLAIRS PRICILLA 44Z --
0085113199 - 01-JAN-11 0%

AFC - ICP -
RI - Avg. Wt/Calf: / 0
Age / Calves - / -

VREDENHEIM VL 090027 - SP
0068852094 - 15-MAY-09 2%

WYNLAND MM DEST 34 - SP
0063435630 - 24-SEP-06 1%

AFC 32 ICP 393
RI 107 Avg. Wt/Calf: 94 / 4
Age / Calves 6j.11m. / 5

- RED COCKBURN RIBEYE 308U --
0084062355 - 01-JAN-90 0%
- RED TR LYNN 301R --
0084062934 - 01-JAN-00 0%

- RED RINGSTEAD KARGO 215U - SP
0084934082 - 22-FEB-08 0%
- RED BRYLOR PRISCILLA 67W - SP
0084936244 - 12-FEB-09 8%

MAKOJALO DAANTJIE 330 - SP
0061672044 - 04-AUG-05 4%

WYNLAND BEZ 11 - SP
0049111404 - 21-AUG-04 0%

MARSHMOOR EARL - SP
0042487041 - 15-SEP-99 1%

WYNLAND 48 - SP
0044394732 - 07-NOV-00 0%

Breeding value index	CALVING EASE ****		MILK ***	CALF GRWTH ****	MAINTENANCE ***		GROWTH TEST					Semen donor: No Tests:Phase A Vacc. -
	Birth wght	Birth Mat.	Milk	Wean wght	12M	Mature wght	ADG	Kleiber	FCR	Raam Punt	Length	
Breeding value	100	100	92	99	99	117	93	89	97	100	100	
Weights/Index	1.51 ₇₁	.4 ₄₉	3.5 ₅₁	26.6 ₆₈	40.8 ₅₃	57.8 ₃₂	170 ₃₇	81.2 ₃₇	-73 ₁₅	0 ₄₂	44 ₄₁	
	39			304 (110)	- (-)		-	89.	97	-	-	

Remarks:
This bull is very correct and shows great balance right through. He weaned at 308kg.

LOT 19

0552145, ANDREW MASTERSON FAMILY TRUST, P.O. BOX 117,HUMANSDORP,6300,
(T)083-321 2405



Name Ident. number Sex Section Reg. number Birth Date
MILAGRO ACM 210055 MALE SP 0092227495 18-JUL-21
UNIVERSE 2155 RED

DNA: U5968U026

MILAGRO UNIVERSE 2155 - SP
0092227495 - 18-JUL-21 0%

- RED DKF RAZOR 55C - SP
0087464236 - 27-JAN-15 1%

MILAGRO PENNY 1859E - SP
0087468302 - 09-SEP-18 0%

AFC 34 ICP -
RI 86 Avg. Wt/Calf: 103 / 1
Age / Calves 2j.10m. / 1

- DKF ELIMINATOR 15A --
0087464152 - 01-JAN-05 0%

- DKF MISS NET WORTH 21A --
0087464210 - 01-JAN-06 0%

AFC - ICP -
RI - Avg. Wt/Calf: / 0
Age / Calves - / -

- RED DMM GLESBAR BARDANCE 35X - SP
0080806532 - 23-JAN-10 0%

MILAGRO PENNY 1111 - SP
0075532267 - 16-AUG-11 1%

AFC 30 ICP 396
RI 109 Avg. Wt/Calf: 105 / 9
Age / Calves 11j.0m. / 9

- S A V ELIMINATOR 9105 --
0081213084 - 01-JAN-03 0%

- RED DKF MISS POWER 17P --
0087464145 - 01-JAN-90 0%

- S A V NET WORTH 4200 - SP
0063171318 - 03-JUN-04 1%

- DKF MISS POWER UP 95X --
0087464202 - 01-JAN-85 0%

- RED DMM PUMP 118T --
0080806524 - 01-JAN-00 0%

- RED GLESBAR LEAH 029U --
0080806391 - 01-JAN-00 0%

BONHAVEN WELLS KING 07116 - SP
0065142267 - 15-OCT-07 1%

BONHAVEN 003135 PENNY 08135 - SP
0067068734 - 11-OCT-08 5%

Breeding value index	CALVING EASE ***		MILK ***	CALF GRWTH ****	MAINTENANCE ***		GROWTH TEST					Semen donor: No Tests:Phase A Vacc. -
	Birth wght	Birth Mat.	Milk	Wean wght	12M	Mature wght	ADG	Kleiber	FCR	Raam Punt	Length	
Breeding value	83	106	82	116	116	111	121	122	124	125	112	
Weights/Index	3.1 ₆₈	.14 ₄₉	.7 ₅₁	34.6 ₆₅	54.4 ₅₃	50.7 ₃₉	301 ₄₅	165.4 ₄₅	-126 ₁₂	1.9 ₄₉	56.1 ₄₈	
	38			266 (103)	- (-)		-	122.	124	-	-	

Remarks:
A Razor son, going back on the maternal side to the Bonhaven Penny family. He has very good length of body.

LOT 20

0552145, ANDREW MASTERSON FAMILY TRUST, P.O. BOX 117,HUMANSDORP,6300,
(T)083-321 2405



Name Ident. number Sex Section Reg. number Birth Date
MILAGRO ACM 210017 MALE SP 0091752030 14-MAR-21
UMBRA 2117 BLACK

DNA: U4347U038

MILAGRO UMBRA 2117 - SP -
0091752030 - 14-MAR-21 5%

MILAGRO QUEBEC 1704 - SP -
0085165330 - 09-FEB-17 1%

MILAGRO ENA 1619 - SP -
0083663765 - 10-MAY-16 3%

AFC 36 ICP 346
RI 110 Avg. Wt/Calf: 102 / 3
Age / Calves 6j.9m. / 5

- VISION UNANIMOUS 1418 - SP -
0081835035 - 22-JAN-11 0%

MILAGRO POWER 1324 - SP -
0078780798 - 14-SEP-13 2%

AFC 29 ICP 368
RI 109 Avg. Wt/Calf: 111 / 3
Age / Calves 8j.8m. / 6

- S A V IRON MOUNTAIN 8066 - SP -
0073801953 - 24-FEB-08 1%

MILAGRO ENA 1317 - SP -
0078780715 - 14-AUG-13 1%

AFC 33 ICP 412
RI 104 Avg. Wt/Calf: 94 / 4
Age / Calves 9j.5m. / 7

- VISIONTOPLINE STOCKMAN - -
0081833998 - 01-JAN-06 0%
- VISION EDELLA 665 - -
0081834509 - 01-JAN-06 0%

MEQUATLING CASH - SP -
0068967884 - 15-JUN-09 1%
WOODVIEW POWER 6 156 - SP -
0064207095 - 19-JUL-06 1%

- TC GRIDIRON 258 - SP -
0067158238 - 02-JUN-02 0%
- S A V MADAME PRIDE 3249 - -
0073776502 - 01-JAN-02 3%

MEQUATLING CASH - SP -
0068967884 - 15-JUN-09 1%
HOLVLEI ENA HC - SP -
0066869041 - 10-JUL-08 2%

CALVING EASE		MILK		CALF GRWTH		MAINTENANCE		GROWTH TEST					Semen donor: No		
****		*****		****		***		ADG	Kleiber	FCR	Raam Punt	Length	Tests:Phase A		
Birth wght	Birth Mat.	Milk	Wean wght	12M	Mature wght	ADG	Kleiber	FCR	Raam Punt	Length	Vacc. -				
109	96	120	111	111	112	111	109	114	111	113					
.69 ₆₉	.53 ₄₄	11.4 ₄₃	28.1 ₆₅	50.7 ₃₄	52.8 ₃₁	256 ₂₁	133 ₂₁	-107 ₁₃	.8 ₂₃	57 ₂₃					
36			298 (95)	- (-)		-	109.	114	-	-					

Remarks:
He is a Quebec son with a 120 milk index and a weaning weight of 322kg. He is very correct and will be easy to use.

LOT 21

0552145, ANDREW MASTERSON FAMILY TRUST, P.O. BOX 117,HUMANSDORP,6300,
(T)083-321 2405



Name Ident. number Sex Section Reg. number Birth Date
MILAGRO ACM 210035 MALE SP 0091891127 01-MAY-21
UPGRADE 2135 BLACK

DNA: U4906U005

MILAGRO UPGRADE 2135 - SP -
0091891127 - 01-MAY-21 0%

MILAGRO QUEBEC 1704 - SP -
0085165330 - 09-FEB-17 1%

MILAGRO PENNY 1740E - SP -
0085966570 - 20-AUG-17 0%

AFC 32 ICP 415
RI 103 Avg. Wt/Calf: 104 / 2
Age / Calves 4j.11m. / 3

- VISION UNANIMOUS 1418 - SP -
0081835035 - 22-JAN-11 0%

MILAGRO POWER 1324 - SP -
0078780798 - 14-SEP-13 2%

AFC 29 ICP 368
RI 109 Avg. Wt/Calf: 111 / 3
Age / Calves 8j.8m. / 6

- RED TER RON PARKER 34A - SP -
0082166562 - 24-JAN-13 0%

MILAGRO PENNY 1111 - SP -
0075532267 - 16-AUG-11 1%

AFC 30 ICP 396
RI 109 Avg. Wt/Calf: 105 / 9
Age / Calves 11j.0m. / 9

- VISIONTOPLINE STOCKMAN - -
0081833998 - 01-JAN-06 0%
- VISION EDELLA 665 - -
0081834509 - 01-JAN-06 0%

MEQUATLING CASH - SP -
0068967884 - 15-JUN-09 1%
WOODVIEW POWER 6 156 - SP -
0064207095 - 19-JUL-06 1%

- TER RON PARK PLACE 18Y - PEN -
0082166505 - 01-JAN-09 0%
- RED TER RON DIAMOND MIST 164Y - -
0082166554 - 01-JAN-09 0%

BONHAVEN WELLS KING 07116 - SP -
0065142267 - 15-OCT-07 1%
BONHAVEN 003135 PENNY 08135 - SP -
0067068734 - 11-OCT-08 5%

CALVING EASE		MILK		CALF GRWTH		MAINTENANCE		GROWTH TEST					Semen donor: No		
***		*****		****		**		ADG	Kleiber	FCR	Raam Punt	Length	Tests:Phase A		
Birth wght	Birth Mat.	Milk	Wean wght	12M	Mature wght	ADG	Kleiber	FCR	Raam Punt	Length	Vacc. -				
103	90	111	124	124	131	116	110	113	124	127					
1.29 ₆₈	.77 ₄₄	8.9 ₄₃	35.3 ₆₄	61.1 ₃₇	74.3 ₃₅	279 ₂₆	133.8 ₂₆	-105 ₁₃	1.8 ₂₈	70.9 ₂₈					
38			297 (107)	- (-)		-	110.	113	-	-					

Remarks:
Another Quebec son, going back to Bonhaven Penny, who is a Mequatling Royal Flush daughter. A bull with great length.

LOT 22

0552145, ANDREW MASTERSON FAMILY TRUST, P.O. BOX 117,HUMANSDORP,6300,
(T)083-321 2405



Name Ident. number Sex Section Reg. number Birth Date
MILAGRO ACM 210056 MALE SP 0092252022 22-JUL-21

UNDERCUT 2156

BLACK

DNA: U5968U027

MILAGRO UNDERCUT 2156 - SP
0092252022 - 22-JUL-21 5%

MILAGRO ROLEX 1803 - SP
0087291746 - 05-MAR-18 8%

SCHEEPERSRUST CBR PRIDE 280 - SP
0081527392 - 12-JUN-14 2%

AFC 26 ICP 436
RI 106 Avg. Wt/Calf: 102 / 6
Age / Calves 8j.2m. / 6

- S A V INTERNATIONAL 2020 - SP
0079851747 - 20-FEB-12 7%

MILAGRO BLACK PRIDE 1232 - SP
0075866079 - 13-OCT-12 4%

AFC 26 ICP 402
RI 111 Avg. Wt/Calf: 104 / 8
Age / Calves 8j.9m. / 7

MEQUATLING FORTRESS - SP
0069054740 - 26-AUG-09 2%

SCHEEPERSRUST CBR PRIDE 9114 - SP
0069391977 - 21-JUL-09 1%

AFC 36 ICP 360
RI 111 Avg. Wt/Calf: 101 / 5
Age / Calves 9j.10m. / 8

- S A V HARVESTOR 0338 - SP
0075795088 - 18-APR-10 5%
- S A V EMBLYNETTE 5483 -
0079851739 - 01-JAN-03 2%

MEQUATLING BET-ON-BLACK - SP
0069142818 - 06-SEP-09 4%

WOODVIEW BLACK PRIDE 7 471 - SP
0064821291 - 24-JUL-07 4%

MEQUATLING FORT KNOX - SP
0065069718 - 11-SEP-07 1%

MEQUATLING BLOSSOM - SP
0061403705 - 02-SEP-05 1%

MEQUATLING BOOMSHALAKA - SP
0062845052 - 02-JUL-06 2%

MEQUATLING PRIDE 02 192 - SP
0046118154 - 25-JUL-02 0%

CALVING EASE ***		MILK *****	CALF GRWTH *****	MAINTENANCE ***		GROWTH TEST					Semen donor: No Tests:Phase A Vacc. -
Birth wght	Birth Mat.	Milk	Wean wght	12M	Mature wght	ADG	Kleiber	FCR	Raam Punt	Length	
104	84	125	109	109	103	121	121	118	115	114	
1.12 ₆₉	1.05 ₄₇	13.1 ₄₈	27.5 ₆₄	49.3 ₃₄	41.9 ₃₃	299 ₃₃	161 ₃₃	-115 ₂₅	1.2 ₃₅	58.4 ₃₅	
36			242 (93)	- (-)		-	121.	118	-	-	

Remarks:
A very muscled individual with a milk index of 125. He is going to breed weaners!

LOT 23

0552145, ANDREW MASTERSON FAMILY TRUST, P.O. BOX 117,HUMANSDORP,6300,
(T)083-321 2405



Name Ident. number Sex Section Reg. number Birth Date
MILAGRO ACM 210106 MALE SP 0092674332 14-OCT-21

UNCHARTED 21106

BLACK

DNA: U6945U010

MILAGRO UNCHARTED 21106 - SP
0092674332 - 14-OCT-21 4%

MILAGRO TEQUILA 2001 - SP
0090307307 - 18-MAR-20 5%

MILAGRO POWER 1605 - SP
0083387118 - 25-FEB-16 5%

AFC - ICP 372
RI 118 Avg. Wt/Calf: 106 / 6
Age / Calves 6j.7m. / 5

- BUFORD PATHFINDER C304 - SP
0085718211 - 29-DEC-14 5%

MILAGRO SKY RITO 1734E - SP
0085966521 - 16-AUG-17 0%

AFC 31 ICP 460
RI 101 Avg. Wt/Calf: 99 / 3
Age / Calves 5j.1m. / 3

- S A V HARVESTOR 0338 - SP
0075795088 - 18-APR-10 5%

MILAGRO POWER 1324 - SP
0078780798 - 14-SEP-13 2%

AFC 29 ICP 368
RI 109 Avg. Wt/Calf: 111 / 3
Age / Calves 8j.8m. / 6

- S A V RESOURCE 1441 - SP
0078174232 - 07-JAN-11 0%

- BUFORD ELBA 811Y -
0085718138 - 01-JAN-07 2%

- S A V BRUISER 9164 - SP
0081988388 - 05-MAR-09 2%

WOODVIEW SKY RITO B MAX - SP
0046435053 - 23-JUL-02 0%

- S A V HERITAGE 6295 - SP
0068974229 - 01-MAR-06 1%

- S A V EMBLYNETTE - -
0075795070 - 01-JAN-06 0%

MEQUATLING CASH - SP
0068967884 - 15-JUN-09 1%

WOODVIEW POWER 6 156 - SP
0064207095 - 19-JUL-06 1%

CALVING EASE ***		MILK *****	CALF GRWTH *****	MAINTENANCE ***		GROWTH TEST					Semen donor: No Tests:Phase A Vacc. -
Birth wght	Birth Mat.	Milk	Wean wght	12M	Mature wght	ADG	Kleiber	FCR	Raam Punt	Length	
93	87	123	128	128	116	122	118	117	114	119	
2.12 ₆₆	.9 ₄₄	12.3 ₄₄	37.5 ₅₉	64 ₃₅	56.6 ₃₇	305 ₃₅	154.2 ₃₅	-114 ₂₂	1.1 ₃₈	62.7 ₃₇	
32			242 (97)	- (-)		-	118.	117	-	-	

Remarks:
Another Milagro Tequila son x Milagro power family. His grand dam was the 2017 Supreme National Champion Black Angus. A great figures bull too. Open your heifers up with him!

LOT 24

0552145, ANDREW MASTERSON FAMILY TRUST, P.O. BOX 117,HUMANSDORP,6300,
(T)083-321 2405



Name Ident. number Sex Section Reg. number Birth Date
MILAGRO **ACM 210063** **MALE** **SP** **0092245257** **03-AUG-21**
ULLI 2163 **RED**

DNA: U5968U034

MILAGRO ULLI 2163 - SP
0092245257 - 03-AUG-21 0%

- RED DKF RACER 8E - SP
0091470757 - 18-JAN-17 0%

MILAGRO PENNY 1111 - SP
0075532267 - 16-AUG-11 1%

AFC 30 ICP 396
RI 109 Avg. Wt/Calf: 105 / 9
Age / Calves 11j.0m. / 9

- RED DKF RAZOR 55C - SP
0087464236 - 27-JAN-15 1%

- RED DKFE MISS ACE 84C --
0091463463 - 01-JAN-12 0%

AFC - ICP -
RI - Avg. Wt/Calf: / 0
Age / Calves - / -

BONHAVEN WELLS KING 07116 - SP
0065142267 - 15-OCT-07 1%

BONHAVEN 003135 PENNY 08135 - SP
0067068734 - 11-OCT-08 5%

AFC 34 ICP 474
RI 92 Avg. Wt/Calf: 130 / 2
Age / Calves 4j.1m. / 2

- DKF ELIMINATOR 15A -- 0%

0087464152 - 01-JAN-05 0%

- DKF MISS NET WORTH 21A -- 0%

0087464210 - 01-JAN-06 0%

- RED SOO LINE POWER EYE 161X - SP 0%

0084062942 - 04-FEB-10 0%

- RED BLU DAWN MISS ILLICIT 359Z -- 0%

0091463455 - 01-JAN-06 0%

MEQUATLING CHIEF RUNNING BULL 03175 - SP 2%

0047490438 - 02-AUG-03 2%

VEEJAY DIXIE 00 3104 - SP 1%

0043819689 - 28-SEP-00 1%

BONHAVEN UPPER CLASS 0521 - SP 15%

0061900858 - 28-SEP-05 15%

VEEJAY PENNY 00 3135 - SP 1%

0043820067 - 12-OCT-00 1%

CALVING EASE ****	MILK ***	CALF GRWTH ***	MAINTENANCE ***	GROWTH TEST					Semen donor: No Tests:Phase A			
				Birth wght	Birth Mat.	Milk	Wean wght	12M	Mature wght	ADG	Kleiber	FCR
107	105	97	96	96	105	97	98	104	110	97	Vacc. -	
.84 ₇₁	.19 ₄₆	5.1 ₅₁	22.8 ₆₈	38.9 ₅₃	44.5 ₃₂	192 ₄₀	103.2 ₄₀	-88 ₁₀	.8 ₄₄	41.1 ₄₃		
38		259 (100)	- (-)				98.	104				

Remarks:
He is a Racer son, going back to the Bonhaven Penny family on the maternal side. A bull with overall great length of body.

LOT 25

0552145, ANDREW MASTERSON FAMILY TRUST, P.O. BOX 117,HUMANSDORP,6300,
(T)083-321 2405



Name Ident. number Sex Section Reg. number Birth Date
MILAGRO **ACM 210078** **MALE** **SP** **0092390301** **26-AUG-21**
U2 2178 **RED**

DNA: U6944U003

MILAGRO U2 2178 - SP
0092390301 - 26-AUG-21 0%

- RED DKF RACER 8E - SP
0091470757 - 18-JAN-17 0%

MILAGRO ELLE 1207E - SP
0075623850 - 18-APR-12 0%

AFC 27 ICP 369
RI 115 Avg. Wt/Calf: 102 / 11
Age / Calves 10j.4m. / 9

- RED DKF RAZOR 55C - SP
0087464236 - 27-JAN-15 1%

- RED DKFE MISS ACE 84C --
0091463463 - 01-JAN-12 0%

AFC - ICP -
RI - Avg. Wt/Calf: / 0
Age / Calves - / -

- RED LAZY MC CC DETOUR 2W - SP
0073323305 - 15-JAN-09 0%

NICELLE ELLE 09 - SP
0061153672 - 22-JUN-05 1%

AFC 35 ICP 625
RI 76 Avg. Wt/Calf: 100 / 4
Age / Calves 10j.0m. / 6

- DKF ELIMINATOR 15A -- 0%

0087464152 - 01-JAN-05 0%

- DKF MISS NET WORTH 21A -- 0%

0087464210 - 01-JAN-06 0%

- RED SOO LINE POWER EYE 161X - SP 0%

0084062942 - 04-FEB-10 0%

- RED BLU DAWN MISS ILLICIT 359Z -- 0%

0091463455 - 01-JAN-06 0%

- RED RMJ REDMAN 1T -- 0%

0073323297 - 01-JAN-03 0%

- RED LAZY MC BESS 12S -- 0%

0073323289 - 01-JAN-02 0%

ANVOS ECHO 877 - SP 0%

0043825272 - 19-OCT-00 0%

VICTORIO HOBO'S KATO 4TH 97 109 - SP 0%

0039963855 - 17-NOV-97 0%

CALVING EASE ****	MILK ****	CALF GRWTH ***	MAINTENANCE ****	GROWTH TEST					Semen donor: No Tests:Phase A			
				Birth wght	Birth Mat.	Milk	Wean wght	12M	Mature wght	ADG	Kleiber	FCR
107	108	102	92	92	80	102	106	104	106	93	Vacc. -	
.85 ₇₂	.03 ₄₈	6.4 ₅₂	19.9 ₆₈	35.8 ₅₃	15.5 ₃₉	213 ₄₆	123.1 ₄₆	-88 ₁₃	.5 ₅₀	36.8 ₄₉		
38		255 (98)	- (-)				106.	104				

Remarks:
Another Racer son, out of the Milagro Elle family. Use him on your heifers.



For all your
genetic health &
trait screening
needs

ABOUT US

Founded in 2003, Unistel is a genetic testing laboratory that offers extensive genetic testing for a variety of needs. From determining your animal's lineage; to screening for phenotypic traits; to helping you determine your animal's genetic merit: UnistelAGRI has you covered!

CONTACT US

021 007 5617

cattle@unistelmedical.co.za

www.unistelmedical.co.za

 @unistelagri

 @UnistelAgri

OUR SERVICES

Choose from a variety of tests to suit your needs:

- **Identity:**
 - DNA profiling and parentage verification
- **50K Illumina Bovine Beadchip testing:**
 - Includes over 40 reported mutations
- **Single mutations:**
 - Bulldog dexter
 - Congenital myasthenic syndrome (CMS)
 - Myostatin (F94L, nt821, Q204X)
 - Polledness
 - Pompe's Disease



COMMERCIAL BULL

COMMERCIAL BULL

Lot no	ID no	Details	Price	Buyer
26	ACM2167E	Black bull		



MALE SP

The sale rules must be published in the front of the catalog
SIMMENTALER SALE RULES (Sales under the rules of the Society)

1. When signing these sale rules, the seller has to submit written proof that his sales animals tested clean of TB and CA within 60 days prior to the sale, or submit a CA3 certificate/veterinary certificate specifying that all his animals tested clean in the past twelve months. **No sales will be accepted without these certificates.**

Not applicable in Namibia, only animals exported to South Africa requires to be tested for TB and CA.

2. Animals older than one year (on sale day) may appear as calf book in the catalogue. These animals must be screened by the screener/inspector before the sale and the inspection report should be sent to the office. If the specific calf book animal failed inspection on the day of the sale, that animal may not appear in the ring. The registration certificate will be transferred to the buyer at the seller's expense.
3. Animals under 1 year* are recorded as calf book and their official calf book certificate will be transferred to the buyer at the seller's expense. Members of the Society can offer these animals between the ages of 1 and 3 years for full registration in the Herd Book.
4. The seller has signed and submitted the following "Seller's Certification" (auction company certificates):
 - 4.1 that the animals on offer have been tattooed and checked and that it corresponds with the certificates.

If the buyer can prove within 30 days after the sale that the animal was not tattooed or was incorrectly tattooed, guarantee 6 will apply.
 - 4.2 that all bulls older than 365 days*, not longer than 30 days in South Africa and 90 days in Namibia prior to the sale;
 - (i) have been certified as fertile by a veterinarian OR (ii) the bulls' semen has been certified as fertile by a registered veterinary technologist. **Motility, morphology and scrotal circumference shall be evaluated and specified on the prescribed evaluation report see pg. 8** and that it is guaranteed by the seller up to 7 calendar days after the date of sale. Fertility certification shall be available on request from the seller for up to 1 year after the date of sale. If the buyer can present a veterinary certificate that proves the contrary within 7 days after the sale, guarantee 6 will apply.
 - 4.3 any guarantees concerning the freezing of semen shall be made by a separate agreement between the buyer and seller.
 - 4.4 that all bulls tested clean of Trichomoniasis en Vibriosis.
 - 4.5 that all sires of calves not on record at the Society, and service sires of pregnant cows, as well as semen, have a DNA/Sire verification on record and that the bulls have been inspected. (Reference bulls).
 - 4.6 that the following animals presented as pregnant **have been certified as pregnant by a veterinarian** and such certification is available on request from the seller for up to 1 year after the date of sale provided that such animals presented comply with the Simmentaler sale rules:
 - i. heifers 31 months and older* – also see item 7.4;

- ii. cows within 12 months (365 days)* after last calving on record; and
- iii. all other female animals advertised as pregnant in the sale catalogue or any appendixes thereto.
- iv. Egg donors – Simdex requirements are not applicable. Must be pregnant within 12 months since last flush date or date of birth of own calf.
- v. Recipient animals – Simdex requirements are applicable. Must be pregnant within 12 months since last embryo calf or date of birth of own calf.

4.7 If these animals that have been certified pregnant are certified as not pregnant by a veterinarian within 48 hours after the sale, guarantee 6 will apply.

- 5. If a female animal is sold as "open" or "not pregnant" and is certified pregnant by a veterinarian within 30 days after the sale, guarantee 6 will apply.
- 6. If the necessary proof is provided to the seller in writing within the relevant period, the seller shall, at the choice of the buyer, replace any animal as described above under 4.1, 4.2, 4.4, 4.5, 4.6, 4.7 and 5, with other animals of equal value or refund the purchase price.

7. Animals offered shall meet with the following requirements:

7.1 refer 2 and 3;

7.2 minimum Simdex reproduction index at last calving of 80 (cows with 1 calf) or 85 (cows with two or more calves)

7.3 Simmentaler bulls shall have a birth weight breeding value at the time of the compiling of the catalogue;

7.4 maximum predicted age of heifers with 1st calving no higher than 39 months (1 185 days*);

7.5 **Auxiliary studbook A** female animals may be offered, provided they meet the following requirements:

- (i) At least two calvings after registration, and
- (ii) within twelve months after last calving have again been confirmed/certified to be pregnant;
- (iii) **Auxiliary studbook A female animals** not meeting these requirements may still be sold as part of the 10% rule, which includes animals that do not comply with the Simmentaler sale rules.

8. A maximum of 10% of the total offer can be sold as "not under the rules of the Society".

9. DNA and Sire verification is compulsory for all bulls offered a sale from 1 January 2020.

10. All pamphlets posted on social media must be reviewed and approved by the office.

10.1. Simmentaler logo should appear on the pamphlet;

10.2. All animals must comply with the above-mentioned rules, e.g. bulls must already have DNA and sire verification.

* = age on day of sale.

Understanding possible changes in EBVs for Southern Africa Simmentaler

(Johan Potgieter)

The accuracy associated with a breeding value (EBV) gives an indication of its reliability, and the likely extent of its possible change as more information becomes available. EBVs are based on the available information at the time of the genetic analysis. As more data becomes available on an animal (or its progeny, or relatives) then the accuracy of its EBVs for particular traits will increase.

For example, a bull at 18 months of age might have EBVs based on his own performance and the performance of his siblings, parents and other relatives. As the bull is used, and his progeny recorded, more information is available about his likely genetic merit. As a result, his EBVs may change and the accuracies will increase.

Accuracy are influenced by the heritability of a trait and the genetic associations existing between traits. For low heritable traits, more information is required to achieve a similar accuracy to that of highly heritable traits.

Accuracies are expressed as percentages. The higher the percentage, the greater the chance that the EBV is a close estimate of the animal's true genetic merit, and the less the likelihood that the EBV will change as more information becomes available. Even though an EBV with a low accuracy may change in the future, it is still the best estimate of an animal's genetic merit for that trait. Generally, as more information becomes available, an EBV is just as likely to increase as it is to decrease.

The maximum likely change to EBVs at different accuracy levels is indicated by the standard error associated with different accuracies. The magnitude of the standard errors decrease as the accuracies increase. Statistically, there is a 68% chance that an animal's true breeding value will be within 1 standard error of its EBV, and a 96% chance that it will be within 2 standard errors of its EBV.

Table 1. Confidence ranges ¹ (standard error) for EBVs at different levels of accuracy for Southern Africa Simmentaler

Trait	Accuracy										
	0.50	0.55	0.60	0.65	0.70	0.75	0.80	0.85	0.90	0.95	0.99
Gestation L.	2.0	1.9	1.9	1.8	1.7	1.5	1.4	1.2	1.0	0.7	0.3
Birth Wt.	1.7	1.6	1.6	1.5	1.4	1.3	1.2	1.0	0.8	0.6	0.3
200-day Wt.	7.9	7.6	7.3	6.9	6.5	6.0	5.5	4.8	4.0	2.8	1.3
400-day Wt.	13.6	13.1	12.6	11.9	11.2	10.4	9.4	8.3	6.9	4.9	2.2
600-day Wt.	17.5	16.8	16.1	15.3	14.4	13.3	12.1	10.6	8.8	6.3	2.8
Cow Weight	23.0	22.2	21.2	20.2	19.0	17.6	15.9	14.0	11.6	8.3	3.7
Carcase Wt.	13.8	13.3	12.8	12.1	11.4	10.6	9.6	8.4	7.0	5.0	2.3
Carc Rib Fat	1.3	1.2	1.2	1.1	1.0	1.0	0.9	0.8	0.6	0.5	0.2
Carc Rmp Fat	1.7	1.7	1.6	1.5	1.4	1.3	1.2	1.1	0.9	0.6	0.3
Carc EMA	2.1	2.0	2.0	1.9	1.7	1.6	1.5	1.3	1.1	0.8	0.3
Carc RBY %	1.3	1.3	1.2	1.2	1.1	1.0	0.9	0.8	0.7	0.5	0.2
Carc IMF %	0.8	0.8	0.8	0.7	0.7	0.6	0.6	0.5	0.4	0.3	0.1
Scrotal size	1.2	1.2	1.1	1.1	1.0	0.9	0.9	0.8	0.6	0.4	0.2
Days to Calv	4.9	4.7	4.5	4.3	4.0	3.7	3.4	3.0	2.5	1.8	0.8
200 Wt Mat.	5.3	5.1	4.9	4.6	4.3	4.0	3.6	3.2	2.6	1.9	0.9

¹ Statistically there is a 68% chance that an animals true breeding value will be within 1 standard error of its EBV and 96% chance that it will be within 2 standard errors of its EBV.

For example, a 200d EBV with an accuracy of 90% will have a standard error of ± 4.0 kg. If an animal's 200d EBV is +25 kg, then with the addition of further information (e.g. progeny or sibling records), the EBV would be expected to fall within the range of +21 kg to +29 kg (i.e. $25 \text{ kg} \pm 4.0 \text{ kg}$) 68% of the time; and within the range of +17 kg to +33 kg (i.e. $25 \text{ kg} \pm 8 \text{ kg}$) 96% of the time.

TAKE THE GUESS WORK OUT OF BULL BUYING

Genetic breeding values (the figures in the table at each lot number and below) are the best indication of how a bull is breeding and is a good selection tool.
 More about this at the bottom of the page.

The SIMMENTALER BREEDPLAN breeding values are divided into the top third, middle and bottom thirds. Place the breeding values of an animal in one of these three groups and don't worry about the small differences in breeding values. Breeders must keep their individual breeding policy in mind during bull selection.

2018 TWS	CED	CEM	BIRTH	200	400	600	COW	MILK
Top 1/3	> 1.7	> 1.6	< 2.0	> 17	> 27	> 34	> 37	> 5
Middle 1/3	-0.7 - 1.4	0.1 - 1.5	1.1 - 1.8	14 - 17	21 - 27	27 - 34	28 - 36	4 - 5
Bottom 1/3	< -0.7	< 0.1	> 1.8	< 14	< 22	< 27	< 27	< 5
IDEAL (within breed)	> 1.7	> 0.7	0.7 - 1.9	> 15	24 - 36	26 - 38	23 - 38	4 - 7

[< = Lower than - = Between > = Higher than]

BLUP Breeding Values (EBV)

- EBVs are not comparable across breeds.
- Allows you to compare animals within the Simmentaler breed, between herds and over years. (For example, you can compare a three year old bull in Windhoek with a year-old bull in Pretoria).
- The highest EBV is not necessarily the best. The ideal for Simmentaler is in the bottom column of the table above.
- The reliability of EBVs is expressed in a % figure below the EBV - the higher the % the smaller the probability that the breeding value may change.
- Changes annually as more information is available. (A EBV has an equal chance to change up or down).
- How does the most recent EBV of a bull I bought five years ago compare with that of a bull I presently have in mind. (To improve my herd, the young bull must be better than the old one).

Visit www.simmentaler.org, select "**ANIMAL ENQUIRY**" and enter the bull's ID (in ear and on certificate) in the field "**ANIMAL IDENTIFIER**" for the newest EBVs – The service is available to all interested parties, free of charge.

Thank you for your interest
 © Simmentaler

MILAGRO UBER 2120										ACM2120					Lot. 27														
ANDREW MASTERSON FAMILY TRUST, P O BOX 117 HUMANSDORP 6300 TEL.:27823211462															SIMMENTALER														
Birth Date: 30/05/2021					DNA: 5968U007, PV					Reg. Status: REG					MALE/MANLIK														
Age: 28 months										Inspection Date: 17/10/2022					Reg. No: 103496972														
Herdbook: SP																													
Horn: Horned																													
<p>SIRE / VAAR:</p> <ul style="list-style-type: none"> PN1297 LEEUPOORT ZAIRE PN15462 LEEUPOORT ZARLO PN11709 LEEUPOORT SENLO Polled ACM192 MILAGRO SEATTLE 1902 Horned ACM1331 MILAGRO MARSHALL 1331 Horned ACM1640 MILAGRO MINETTE 1640 Horned ACM1034 MILAGRO MINETTE 1034 Horned 															<p>DAM / MOER:</p> <ul style="list-style-type: none"> PJO134 TAAIBOSSPRUIT EENDRACHT Horned PJO1653 TAAIBOSSPRUIT ELON Horned PJO1230 TAAIBOSSPRUIT NIMO Polled ACM189 MILAGRO MELODIE 1809 Horned Simdex: 103 Calving dates: 29/09/2022 30/05/2021 25/04/2020 ICP: 444 ACM1230 MILAGRO LARRY 1230 Horned ACM1547 MILAGRO MELODIE 1547 Polled ACM121 MILAGRO MELODIE 121 Polled 														
September 2023 South African Simmentaler BREEDPLAN															Simmentaler SA-- www.simmentaler.org														
2023	CED	CEM	BW	200	400	600	MCW	MILK	SC	DC	EMA	Rib	Rump	IMF%	RBV%	NFIP	SBI (R)	SPI (R)											
EBV	+0.0	-0.1	+2.0	+25	+37	+44	+55	+5	-	-	-	-	-	-	-	-	+502	+497											
ACC	36%	28%	67%	48%	44%	46%	46%	31%																					
BREED	+0.3	+0.6	+1.6	+17	+27	+33	+35	+5	+0.3	-0.7	+0.3	+0.0	+0.1	+0.1	+0.2	-0.03	+481	+470											
Traits observed: BWT 200WT Seller's remarks / Verkoper se kommentaar: The complete package. Outstanding growth figures. Stud bull!!!!															R														

MILAGRO UPLIFT 2130										ACM2130					Lot. 28														
ANDREW MASTERSON FAMILY TRUST, P O BOX 117 HUMANSDORP 6300 TEL.:27823211462															SIMMENTALER														
Birth Date: 14/09/2021					DNA: 6946U003, SV					Reg. Status: REG					MALE/MANLIK														
Age: 25 months										Inspection Date: 17/10/2022					Reg. No: 103524914														
Herdbook: SP																													
Horn: Horned																													
<p>SIRE / VAAR:</p> <ul style="list-style-type: none"> UG07186 SALERIKA KAROB (P) Polled UG11209 SALERIKA BRAVO Disbudded UG07191 SALERIKA UG07191 B ** Disbudded ACM1624 MILAGRO PERU 1624 Horned CMO0273 RU-DEV STAAL GH0712 BLENHEIM GH0712 TR9840 LEKKERLYF TR9840 															<p>DAM / MOER:</p> <ul style="list-style-type: none"> JME1013 JACMI HANRU Horned JS123 SIMBERG HANDRU JS1018 SIMBERG MIAN Horned JS1431 SIMBERG ALRU *** Disbudded Simdex: 98 Calving dates: 15/02/2023 14/09/2021 20/11/2020 30/10/2019 ICP: 373 06/12/2018 20/11/2017 01/01/2017 JS1234 SIMBERG ALERZ ** Scurred KS085 KYKSIM ALBA *** Horned 														
September 2023 South African Simmentaler BREEDPLAN															Simmentaler SA-- www.simmentaler.org														
2023	CED	CEM	BW	200	400	600	MCW	MILK	SC	DC	EMA	Rib	Rump	IMF%	RBV%	NFIP	SBI (R)	SPI (R)											
EBV	+5.5	+0.5	-0.2	+13	+25	+27	+27	+4	+0.2	+0.0	-	-0.2	-0.2	+0.2	+0.4	-	+532	+523											
ACC	38%	32%	68%	57%	53%	54%	52%	42%	31%	29%		27%	27%	25%															
BREED	+0.3	+0.6	+1.6	+17	+27	+33	+35	+5	+0.3	-0.7	+0.3	+0.0	+0.1	+0.1	+0.2	-0.03	+481	+470											
Traits observed: BWT 200WT Seller's remarks / Verkoper se kommentaar: A very well balanced bull out of a great 3 star dam															R														

MILAGRO UNTOUCHABLE 2134										ACM2134					Lot. 29														
ANDREW MASTERSON FAMILY TRUST, P O BOX 117 HUMANSDORP 6300 TEL.:27823211462															SIMMENTALER														
Birth Date: 09/10/2021					DNA: 6946U007, SV					Reg. Status: REG					MALE/MANLIK														
Age: 24 months										Inspection Date: 17/10/2022					Reg. No: 103545232														
Herdbook: SP																													
Horn: Horned																													
<p>SIRE / VAAR:</p> <ul style="list-style-type: none"> UG07186 SALERIKA KAROB (P) Polled UG11209 SALERIKA BRAVO Disbudded UG07191 SALERIKA UG07191 B ** Disbudded ACM1624 MILAGRO PERU 1624 Horned CMO0273 RU-DEV STAAL GH0712 BLENHEIM GH0712 TR9840 LEKKERLYF TR9840 															<p>DAM / MOER:</p> <ul style="list-style-type: none"> CO03817 BAR 5 S.A. PIONA 04 817N ACM1230 MILAGRO LARRY 1230 Horned ACM062 MILAGRO CLAUDINE 602 ACM1566 MILAGRO MANDY 1566 Horned Simdex: 96 Calving dates: 01/10/2022 09/10/2021 07/09/2020 06/03/2019 ICP: 403 05/05/2018 CMO0273 RU-DEV STAAL ACM1124 MILAGRO MANDY 1124 *** Horned GH0213 BLENHEIM 0213 *** 														
September 2023 South African Simmentaler BREEDPLAN															Simmentaler SA-- www.simmentaler.org														
2023	CED	CEM	BW	200	400	600	MCW	MILK	SC	DC	EMA	Rib	Rump	IMF%	RBV%	NFIP	SBI (R)	SPI (R)											
EBV	+2.0	+0.4	+1.3	+18	+28	+33	+39	+2	+0.5	-	-	-0.3	-0.3	-	+0.4	-	+561	+522											
ACC	37%	32%	68%	58%	53%	54%	52%	43%	29%			25%	25%	25%															
BREED	+0.3	+0.6	+1.6	+17	+27	+33	+35	+5	+0.3	-0.7	+0.3	+0.0	+0.1	+0.1	+0.2	-0.03	+481	+470											
Traits observed: BWT 200WT Seller's remarks / Verkoper se kommentaar: A good bull to use on heifers. He is the maternal brother to Milagro Reactor ACM187, the current National Grand Champion bull															R														

MILAGRO UGANDA 2140

ACM2140

Lot. 30

ANDREW MASTERSON FAMILY TRUST, P O BOX 117 HUMANS DORP 6300 TEL:27823211462

SIMMENTALER

Birth Date: 29/11/2021 DNA: 9302U004, SV
Age: 22 months
Herdbook: SP
Horn: Horned

Reg. Status: REG
Inspection Date: 28/09/2023

MALE/MANLIK
Reg. No: 103584835

SIRE / VAAR:



DAM / MOER:



September 2023 South African Simmentaler BREEDPLAN

Simmentaler SA-- www.simmentaler.org

2023	CED	CEM	BW	200	400	600	MCW	MILK	SC	DC	EMA	Rib	Rump	IMF%	RBY%	NFI P	SBI (R)	SPI (R)
EBV	+2.5	+1.7	+0.6	+11	+18	+19	+21	+2	+0.6	-1.6	+0.1	+0.0	+0.1	+0.0	+0.0	-	+536	+499
ACC	38%	33%	67%	58%	54%	54%	52%	43%	30%	26%	25%	28%	28%	28%	28%			
BREED	+0.3	+0.6	+1.6	+17	+27	+33	+35	+5	+0.3	-0.7	+0.3	+0.0	+0.1	+0.1	+0.2	-0.03	+481	+470



Traits observed: BWT 200WT

Seller's remarks / Verkoper se kommentaar:
He is very correct and will be easy to use.

R _____

MILAGRO UFO 2131

ACM2131

Lot. 31

ANDREW MASTERSON FAMILY TRUST, P O BOX 117 HUMANS DORP 6300 TEL:27823211462

SIMMENTALER

Birth Date: 16/09/2021 DNA: 6946U004, SV
Age: 24 months
Herdbook: SP
Horn: Horned

Reg. Status: REG
Inspection Date: 17/10/2022

MALE/MANLIK
Reg. No: 103545182

SIRE / VAAR:



DAM / MOER:



September 2023 South African Simmentaler BREEDPLAN

Simmentaler SA-- www.simmentaler.org

2023	CED	CEM	BW	200	400	600	MCW	MILK	SC	DC	EMA	Rib	Rump	IMF%	RBY%	NFI P	SBI (R)	SPI (R)
EBV	-3.2	-3.3	+2.6	+20	+32	+37	+46	+1	+0.9	-1.1	-0.1	-0.1	+0.0	+0.2	+0.0	-	+506	+470
ACC	41%	36%	69%	59%	55%	55%	54%	46%	34%	27%	26%	29%	29%	27%	29%			
BREED	+0.3	+0.6	+1.6	+17	+27	+33	+35	+5	+0.3	-0.7	+0.3	+0.0	+0.1	+0.1	+0.2	-0.03	+481	+470



Traits observed: BWT 200WT

Seller's remarks / Verkoper se kommentaar:
Great growth figures. He will breed heavy weaners

R _____

MILAGRO UPTOWN 2102

ACM212

Lot. 32

ANDREW MASTERSON FAMILY TRUST, P O BOX 117 HUMANS DORP 6300 TEL:27823211462

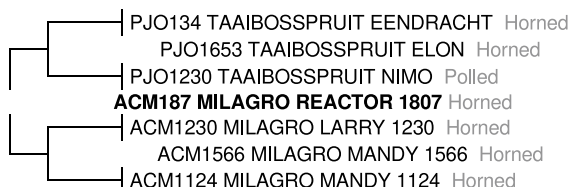
SIMMENTALER

Birth Date: 01/02/2021 DNA: 4347U005, PV
Age: 32 months
Herdbook: SP
Horn: Horned

Reg. Status: REG
Inspection Date: 17/10/2022

MALE/MANLIK
Reg. No: 103479861

SIRE / VAAR:



DAM / MOER:



September 2023 South African Simmentaler BREEDPLAN

Simmentaler SA-- www.simmentaler.org

2023	CED	CEM	BW	200	400	600	MCW	MILK	SC	DC	EMA	Rib	Rump	IMF%	RBY%	NFI P	SBI (R)	SPI (R)
EBV	-0.8	-	+2.3	+26	+40	+51	+62	+6	-	-	-	-	-	-	-	-	-	-
ACC	29%		52%	53%	48%	48%	48%	33%										
BREED	+0.3	+0.6	+1.6	+17	+27	+33	+35	+5	+0.3	-0.7	+0.3	+0.0	+0.1	+0.1	+0.2	-0.03	+481	+470



Traits observed: BWT 200WT

Seller's remarks / Verkoper se kommentaar:
Use him to beef up your weaner crop! A Reactor son with out of the park growth figures. He weaned at 347kg.

R _____

MILAGRO USAIN 2104

ACM214

Lot. 33

ANDREW MASTERSON FAMILY TRUST, P O BOX 117 HUMANSDORP 6300 TEL:27823211462

SIMMENTALER

Birth Date: 03/02/2021 DNA: 4347U007, PV

Reg. Status: REG

MALE/MANLIK

Age: 32 months

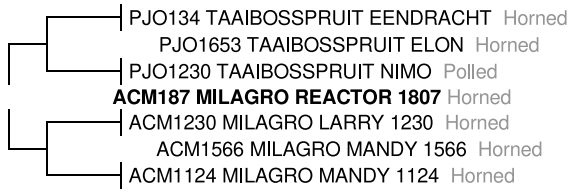
Inspection Date: 17/10/2022

Herdbook: SP

Reg. No: 103479887

Horn: Horned

SIRE / VAAR:



DAM / MOER:



September 2023 South African Simmentaler BREEDPLAN

Simmentaler SA-- www.simmentaler.org

2023	CED	CEM	BW	200	400	600	MCW	MILK	SC	DC	EMA	Rib	Rump	IMF%	RBY%	NFI P	SBI (R)	SPI (R)
EBV	+1.2	-	+1.5	+18	+29	+37	+42	+6	-	-	-	-	-	-	-	-	-	-
ACC	29%		52%	53%	50%	50%	47%	34%										
BREED	+0.3	+0.6	+1.6	+17	+27	+33	+35	+5	+0.3	-0.7	+0.3	+0.0	+0.1	+0.1	+0.2	-0.03	+481	+470



Traits observed: BWT 200WT

Seller's remarks / Verkoper se kommentaar:

A Reactor son out of Amy 1471. A long later maturing bull. He weaned at 337kg

R _____

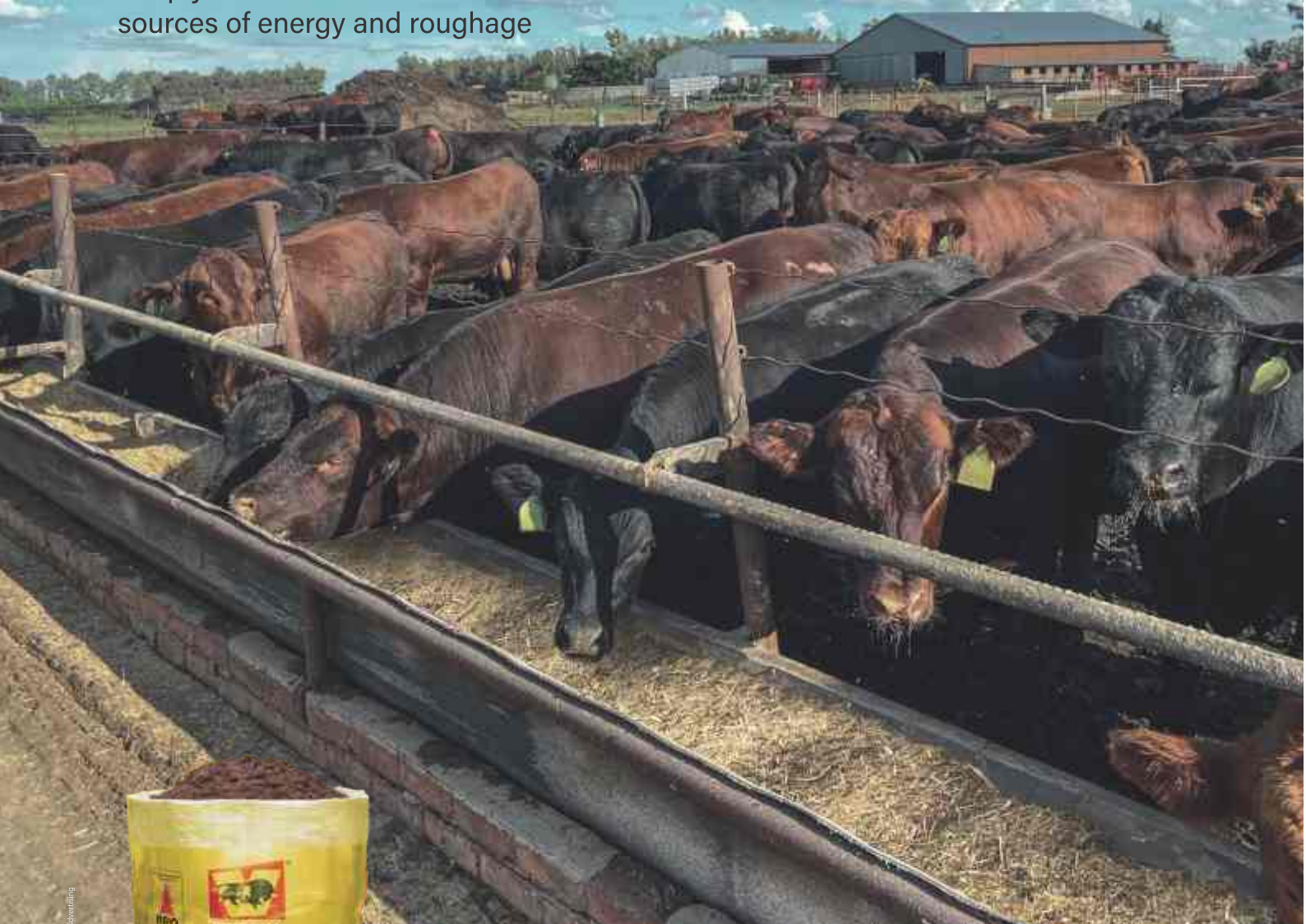
OFFICIAL RECORD / AMPTELIKE REKORD

Milagro Sale, 14/10/2023

Voermol SB 100

The economical, easy to feed, quality fattening concentrate for cattle

Simply mix with maize or other
sources of energy and roughage



60 YEARS

More than 60 Years of
Outstanding Products & Service

For more information contact 032 439 5599
or email info@voermol.co.za.

 Voermol Feeds SA | www.voermol.co.za

Voermol SB 100, Reg. No. V4498, (Act 36/1947).
Registration Holder: Voermol Feeds (Pty) Ltd., P.O. Box 13, Maidstone, 4380.



Voermol

What nature lacks -
Voermol will provide



FEMALE SP

LOT 34

0552145, ANDREW MASTERSON FAMILY TRUST, P.O. BOX 117, HUMANSDORP, 6300, (T)083-321 2405



Name Ident. number Sex Section Reg. number Birth Date
MILAGRO ACM 200011 FEMALE SP 0090307372 29-APR-20

HOSTESS 2011 BLACK

DNA: U726U012

MILAGRO HOSTESS 2011 - SP -
 0090307372 - 29-APR-20 2%

AFC 28 ICP -
 RI 113
 Age / Calves 2j.3m. / 1
 Avg. WI/Calv: 107 / 1
 CALVINGS
 08/22

- BUSHES EASY DECISION 98 - SP -
 0084111640 - 27-FEB-13 1%

MILAGRO HOSTESS 1754 - SP -
 0086571718 - 05-OCT-17 2%

AFC 31 ICP 294
 RI 120 Avg. WI/Calv: 101 / 3
 Age / Calves 4j.11m. / 4

- VIN MAR O REILLY FACTOR -- -
 0084110824 - 01-JAN-02 1%

- BUSHES BIG BLACKBIRD 7885 -- -
 0084111624 - 01-JAN-09 7%

AFC - ICP -
 RI - Avg. WI/Calv: / 0
 Age / Calves - / -

FREDERICKSBURG NORMANDY - SP -
 0075126722 - 06-JUN-12 0%

MILAGRO HOSTESS 1459 - SP -
 0081361388 - 14-DEC-14 1%

AFC 34 ICP 354
 RI 61 Avg. WI/Calv: 104 / 2
 Age / Calves 4j.8m. / 3

- S A V FINAL ANSWER 0035 - SP -
 0065000523 - 22-FEB-00 0%

- VIN MAR EDELLA 2827 -- -
 0084110816 - 01-JAN-99 0%

- BUSHES BIG TIME 452 -- -
 0084111327 - 01-JAN-05 0%

- BUSHES DAKOTA BLACKBIRD 4763 -- -
 0084111616 - 01-JAN-07 0%

- G A R PREDESTINED - SP -
 0070729736 - 16-AUG-99 0%

WOODVIEW VAL 2ND 111 - SP -
 0062238043 - 28-DEC-05 4%

- S A V CAMARO 9272 - SP -
 0073411761 - 20-MAR-09 1%

WOODVIEW TRAVELING HOSTESS 757 - SP -
 0045823697 - 19-JUL-01 0%

CALVING EASE ***	MILK ***	CALF GRWTH ****	MAINTENANCE ****	GROWTH TEST					In Vitro			
				ADG	Kleiber	FCR	Raum Punt	Length	Flushings/Embrios/Calves:	Tests:Phase A		
Birth wght	Birth Mat.	Milk	Wean wght	12M	Mature wght	ADG	Kleiber	FCR	Raum Punt	Length	0/0/0	
93	93	90	110	110	93	107	108	101	95	104	Vacc. -	
2.12 ₆₈	.68 ₄₈	2.9 ₅₀	31.8 ₆₂	49.4 ₃₃	30.3 ₄₀	238 ₂₉	129.3 ₂₉	-83 ₂₄	-4 ₃₂	48.1 ₃₁		
36			276 (101)	- (-)		-	108.	101	-	-		

Remarks:
 Easy Decision daughter out of a very fertile maternal family line. In calf to De Panne Locomotive DE17002, due 09/01/2024.

LOT 35

0552145, ANDREW MASTERSON FAMILY TRUST, P.O. BOX 117, HUMANSDORP, 6300, (T)083-321 2405



Name Ident. number Sex Section Reg. number Birth Date
MILAGRO ACM 210042 FEMALE SP 0092013226 13-MAY-21

HOSTESS 2142 BLACK

DNA: U5968U013

MILAGRO HOSTESS 2142 - SP -
 0092013226 - 13-MAY-21 1%

AFC - ICP -
 RI -
 Age / Calves - / -
 Avg. WI/Calv: / 0
 CALVINGS
 -

MILAGRO QUEBEC 1704 - SP -
 0085165330 - 09-FEB-17 1%

MILAGRO HOSTESS 1754 - SP -
 0086571718 - 05-OCT-17 2%

AFC 31 ICP 294
 RI 120 Avg. WI/Calv: 101 / 3
 Age / Calves 4j.11m. / 4

- VISION UNANIMOUS 1418 - SP -
 0081835035 - 22-JAN-11 0%

MILAGRO POWER 1324 - SP -
 0078780798 - 14-SEP-13 2%

AFC 29 ICP 368
 RI 109 Avg. WI/Calv: 111 / 3
 Age / Calves 8j.8m. / 6

FREDERICKSBURG NORMANDY - SP -
 0075126722 - 06-JUN-12 0%

MILAGRO HOSTESS 1459 - SP -
 0081361388 - 14-DEC-14 1%

AFC 34 ICP 354
 RI 61 Avg. WI/Calv: 104 / 2
 Age / Calves 4j.8m. / 3

- VISIONTOPLINE STOCKMAN -- -
 0081833998 - 01-JAN-06 0%

- VISION EDELLA 665 -- -
 0081834509 - 01-JAN-06 0%

MEQUATLING CASH - SP -
 0068967884 - 15-JUN-09 1%

WOODVIEW POWER 6 156 - SP -
 0064207095 - 19-JUL-06 1%

- G A R PREDESTINED - SP -
 0070729736 - 16-AUG-99 0%

WOODVIEW VAL 2ND 111 - SP -
 0062238043 - 28-DEC-05 4%

- S A V CAMARO 9272 - SP -
 0073411761 - 20-MAR-09 1%

WOODVIEW TRAVELING HOSTESS 757 - SP -
 0045823697 - 19-JUL-01 0%

CALVING EASE ***	MILK ****	CALF GRWTH ****	MAINTENANCE ***	GROWTH TEST					In Vitro			
				ADG	Kleiber	FCR	Raum Punt	Length	Flushings/Embrios/Calves:	Tests:Phase A		
Birth wght	Birth Mat.	Milk	Wean wght	12M	Mature wght	ADG	Kleiber	FCR	Raum Punt	Length	0/0/0	
102	90	108	120	120	100	111	107	105	110	114	Vacc. -	
1.31 ₆₉	.79 ₄₃	8 ₄₄	33.7 ₆₅	57.9 ₃₅	38.8 ₃₂	252 ₂₇	127.5 ₂₇	-90 ₂₃	.8 ₂₉	58.5 ₂₈		
36			282 (106)	- (-)		-	107.	105	-	-		

Remarks:
 Show material. Very stylish heifer, sired by Quebec with great figures. In calf to SAV Waterfall, due 02/03/2024.

LOT 36

0552145, ANDREW MASTERSON FAMILY TRUST, P.O. BOX 117,HUMANSDORP,6300,
(T)083-321 2405



Name Ident. number Sex Section Reg. number Birth Date
MILAGRO **ACM 210050** **FEMALE** **SP** **0092227461** **29-JUN-21**
DP PRIDE 2150 **BLACK**

DNA: U5968U021

MILAGRO DP PRIDE 2150 - SP -
 0092227461 - 29-JUN-21 6%

AFC - ICP -
 RI -
 Age / Calves - / -
 Avg. Wt/Calv: / 0
 CALVINGS -

MILAGRO ROLEX 1803 - SP -
 0087291746 - 05-MAR-18 8%

MILAGRO DP PRIDE 1755 - SP -
 0086571726 - 16-OCT-17 2%

AFC 33 ICP 373
 RI 106 Avg. Wt/Calv:95 / 2
 Age / Calves 4j.9m. / 3

- S A V INTERNATIONAL 2020 - SP -
 0079851747 - 20-FEB-12 7%

MILAGRO BLACK PRIDE 1232 - SP -
 0075866079 - 13-OCT-12 4%

AFC 26 ICP 402
 RI 111 Avg. Wt/Calv: 104 / 8
 Age / Calves 8j.9m. / 7

FREDERICKSBURG NORMANDY - SP -
 0075126722 - 06-JUN-12 0%

DE-PANNE DE PANNE PRIDE 1 STE - SP -
 0074431743 - 02-OCT-11 1%

AFC 22 ICP 512
 RI 104 Avg. Wt/Calv: 89 / 3
 Age / Calves 6j.0m. / 4

- S A V HARVESTOR 0338 - SP -
 0075795088 - 18-APR-10 5%

- S A V EMBLYNETTE 5483 - -
 0079851739 - 01-JAN-03 2%

MEQUATLING BET-ON-BLACK - SP -
 0069142818 - 06-SEP-09 4%

WOODVIEW BLACK PRIDE 7 471 - SP -
 0064821291 - 24-JUL-07 4%

- G A R PREDESTINED - SP -
 0070729736 - 16-AUG-99 0%

WOODVIEW VAL 2ND 111 - SP -
 0062238043 - 28-DEC-05 4%

ASTRO OSCAR 06 2001 - SP -
 0063159370 - 31-AUG-06 2%

WOODVIEW BLACK PRIDE 7 471 - SP -
 0064821291 - 24-JUL-07 4%

CALVING EASE ***	MILK ***	CALF GRWTH ****	MAINTENANCE ****	GROWTH TEST					In Vitro			
				ADG	Kleiber	FCR	Raum Punt	Length	Flushings/Embrios/Calves:	Tests:Phase A		
Birth wght	Birth Mat.	Milk	Wean wght	12M	Mature wght	ADG	Kleiber	FCR	Raum Punt	Length	Flushings/Embrios/Calves:	Tests:Phase A
88	101	94	107	107	83	105	105	100	101	103	0/0/0	Vacc. -
2.62 ₆₇	.33 ₄₃	4.1 ₄₃	30.5 ₆₁	47.7 ₃₄	18.2 ₃₄	226 ₃₃	122.7 ₃₃	-80 ₂₈	.1 ₃₆	47.3 ₃₅		
39			276 (96)	- (-)		-	105.	100	-	-		

Remarks:
 A great grand daughter of Woodview Balck Pride 7471. In calf to Milagro Quebec ACM1704, due 02/03/2024.

Breeding value index
 Breeding value
 Weights/Index

LOT 37

0552145, ANDREW MASTERSON FAMILY TRUST, P.O. BOX 117,HUMANSDORP,6300,
(T)083-321 2405



Name Ident. number Sex Section Reg. number Birth Date
MILAGRO **ACM 210021** **FEMALE** **SP** **0091751800** **25-MAR-21**
LODI 2121 **BLACK**

DNA: U4347U042

MILAGRO LODI 2121 - SP -
 0091751800 - 25-MAR-21 0%

AFC 28 ICP -
 RI 114
 Age / Calves 2j.4m. / 1
 Avg. Wt/Calv: / 0
 CALVINGS
 08/23

MILAGRO REFLEX 1802 - SP -
 0087291738 - 04-MAR-18 2%

VREDENHEIM VL 150030 - SP -
 0085160992 - 12-JUL-15 1%

AFC 25 ICP 400
 RI 113 Avg. Wt/Calv:104 / 5
 Age / Calves 7j.7m. / 6

- SOO LINE LOCOMOTIVE 1403 - SP -
 0084052398 - 01-NOV-11 0%

MILAGRO ELLE 1603 - SP -
 0083387092 - 11-JAN-16 3%

AFC 26 ICP 399
 RI 111 Avg. Wt/Calv: 109 / 4
 Age / Calves 6j.6m. / 5

MEQUATLING MONEYBOX - SP -
 0065076036 - 27-SEP-07 3%

BIJSTEIN LODI - SP -
 0064508740 - 21-JAN-07 1%

AFC 33 ICP 415
 RI 95 Avg. Wt/Calv: 112 / 5
 Age / Calves 8j.5m. / 6

- SOO LINE MOTIVE 9016 - -
 0084051952 - 01-JAN-02 0%

- SHADY BROOK EVERENTENSE 2039 - -
 0084052117 - 01-JAN-02 0%

- S A V RECORD HARVEST 2186 - SP -
 0078921103 - 28-FEB-12 3%

MILAGRO ELLE 1319 - SP -
 0078780731 - 02-SEP-13 0%

MEQUATLING TOOLBOX - SP -
 0061331997 - 04-JUL-05 2%

MEQUATLING BARONESS MAGNA 05 04 - SP -
 0061364717 - 18-AUG-05 2%

BONUS-TAURUS 9440 PANDA 2 - SP -
 0042390229 - 10-SEP-99 0%

BIJSTEIN ELANIE 1ST - SP -
 0045724002 - 11-JAN-02 6%

CALVING EASE ****	MILK *****	CALF GRWTH ***	MAINTENANCE ****	GROWTH TEST					In Vitro			
				ADG	Kleiber	FCR	Raum Punt	Length	Flushings/Embrios/Calves:	Tests:Phase A		
Birth wght	Birth Mat.	Milk	Wean wght	12M	Mature wght	ADG	Kleiber	FCR	Raum Punt	Length	Flushings/Embrios/Calves:	Tests:Phase A
123	94	121	97	97	92	107	108	111	100	102	0/0/0	Vacc. -
-.56 ₇₀	.61 ₄₄	11.9 ₄₅	20.6 ₆₅	39.7 ₃₃	29.3 ₃₈	235 ₂₇	128.8 ₂₇	-101 ₁₉	0 ₂₉	45.9 ₂₈		
35			287 (101)	- (-)		-	108.	111	-	-		

Remarks:
 First calver, selling with a beautiful 2.5 month old heifer calf (ACM2375) at foot, sired by SAV Waterfall.

Breeding value index
 Breeding value
 Weights/Index

LOT 38

0552145, ANDREW MASTERSON FAMILY TRUST, P.O. BOX 117, HUMANSDORP, 6300, (T)083-321 2405



Name Ident. number Sex Section Reg. number Birth Date
MILAGRO ACM 210045 FEMALE SP 0092013259 22-MAY-21

SKY RITO 2145

BLACK

DNA: U5968U016

MILAGRO SKY RITO 2145 - SP -
 0092013259 - 22-MAY-21 1%

AFC 28 ICP -
 RI 116
 Age / Calves 2j,3m, / 1
 Avg. WI/Calv: / 0
 CALVINGS
 09/23

- PVF INSIGHT 0129 - SP -
 0081231201 - 17-APR-10 0%

MILAGRO SKY RITO 1748 - SP -
 0086571650 - 22-SEP-17 1%

AFC 31 ICP 394
 RI 94 Avg. WI/Calv: 103 / 2
 Age / Calves 3j,8m, / 2

- S A V BRILLIANCE 8077 - SP -
 0071479067 - 24-FEB-08 2%

- PVF MISSIE 790 -- -
 0081231193 - 01-JAN-02 0%

AFC - ICP -
 RI - Avg. WI/Calv: / 0
 Age / Calves - / -

- CONNEALY CAPITALIST 028 - SP -
 0081203366 - 01-NOV-10 0%

WOODVIEW SKY RITO B MAX - SP -
 0046435053 - 23-JUL-02 0%

AFC 26 ICP 354
 RI 114 Avg. WI/Calv: 100 / 12
 Age / Calves 15j,1m, / 14

- S A V BISMARCK 5682 - SP -
 0067175786 - 01-FEB-05 1%

- S A V BLACKCAP MAY 5270 -- -
 0071479059 - 03-MAR-03 3%

- P V F NEW HORIZON 001 - SP -
 0061951851 - 02-JAN-00 0%

- P V F MISS RAPTOR 024 -- -
 0081230872 - 01-JAN-97 0%

- S A V FINAL ANSWER 0035 - SP -
 0065000523 - 22-FEB-00 0%

- PRIDES PITA OF CONANGA 8821 -- -
 0081195752 - 01-JAN-00 0%

- BASIN MAX 602C - SP -
 0042137141 - 06-FEB-93 2%

WOODVIEW SKY RITO WANTON - BS -
 0041936154 - 10-JUL-98 -%

CALVING EASE ***	MILK ***	CALF GRWTH *****	MAINTENANCE *****	GROWTH TEST					In Vitro Flushings/Embrios/Calves: 0/0/0 Tests:Phase A		
				ADG	Kleiber	FCR	Raum Punt	Length			
Birth wght	Birth Mat.	Milk	Wean wght	12M	Mature wght	ADG	Kleiber	FCR	Raum Punt	Length	Vacc. -
82	93	90	97	97	84	111	115	103	103	97	
3.17 ₆₈	.65 ₄₆	2.9 ₄₇	32.7 ₆₃	39.7 ₄₀	20.2 ₃₉	252 ₃₉	147.5 ₃₉	-85 ₂₁	.2 ₄₃	41.2 ₄₂	
Weights/Index			281 (97)	- (-)		-	115.	103	-	-	

Remarks:
 Insight daughter out of the Sky Rito family. Selling with a 5 week old bull calf (ACM2392), sired by Attractive.

LOT 39

0675681, ANNELINE PARKER TRUST, 30 REITZ ROAD, MILLPARK, PORT ELIZABETH, 6000, (T)0825555779



Name Ident. number Sex Section Reg. number Birth Date
BOSCHKLOOF RHP 210233 FEMALE SP 0091918201 15-APR-21

RHP 210233

RED

DNA: -

BOSCHKLOOF RHP 210233 - SP -
 0091918201 - 15-APR-21 1%

AFC - ICP -
 RI -
 Age / Calves - / -
 Avg. WI/Calv: / 0
 CALVINGS
 -

MEQUATLING WB150335 - SP -
 0082160383 - 01-AUG-15 0%

BOSCHKLOOF RHP 170004 - SP -
 0085396414 - 04-MAY-17 1%

AFC 35 ICP 365
 RI 106 Avg. WI/Calv: 111 / 2
 Age / Calves 5j,11m, / 4

- RED BADLANDS CAPACITY 37W - SP -
 0078088184 - 23-FEB-09 0%

MEQUATLING BREEZEY 100148 - SP -
 0071196216 - 13-AUG-10 0%

AFC 24 ICP 420
 RI 93 Avg. WI/Calv: 104 / 8
 Age / Calves 10j,0m, / 8

MILAGRO LENNOX 1233 - SP -
 0078023975 - 21-OCT-12 0%

PARKER DJP 140300 - SP -
 0080231962 - 13-OCT-14 0%

AFC 31 ICP 399
 RI 104 Avg. WI/Calv: 113 / 3
 Age / Calves 6j,11m, / 5

- RED UBAR HIGH CAPACITY 224 -- -
 0078088184 - 01-JAN-95 0%

- RED BADLANDS RED CEDAR 311 -- -
 0078088176 - 01-JAN-95 0%

- RED FINE LINE MULBERRY 26P - SP -
 0069124683 - 31-JAN-04 0%

MEQUATLING BREEZEY 060189 - SP -
 0064355696 - 26-AUG-06 0%

- RED 6 MILE FULL THROTTLE 171T - SP -
 0068938711 - 19-FEB-07 0%

WOODVIEW RED ECHI 7 713 - SP -
 0065579773 - 10-NOV-07 7%

MEQUATLING LOVE WARROIR - SP -
 0066591843 - 22-JUN-08 4%

PARKER DJP0833 - SP -
 0067730846 - 09-OCT-08 0%

CALVING EASE ***	MILK ***	CALF GRWTH *****	MAINTENANCE **	GROWTH TEST					In Vitro Flushings/Embrios/Calves: 0/0/0 Tests:Phase A		
				ADG	Kleiber	FCR	Raum Punt	Length			
Birth wght	Birth Mat.	Milk	Wean wght	12M	Mature wght	ADG	Kleiber	FCR	Raum Punt	Length	Vacc. -
89	100	99	135	135	127	124	116	115	118	129	
2.55 ₇₀	.38 ₄₉	5.6 ₄₆	42.9 ₆₆	69.9 ₃₉	69.5 ₃₁	311 ₃₇	149.7 ₃₇	-109 ₂₂	1.4 ₄₂	73.1 ₄₀	
Weights/Index			308 (113)	- (-)		-	116.	115	-	-	

Remarks:
 A structurally sound heifer with all the attributes to add value to any herd. Approximately 6 months certified pregnant to Red DKF Razor.

LOT 40

0675681, ANNELINE PARKER TRUST, 30 REITZ ROAD, MILLPARK, PORT ELIZABETH, 6000, (T)082555779



Name Ident. number Sex Section Reg. number Birth Date
BOSCHKLOOF RHP 210234 FEMALE SP 0091918219 17-APR-21

RHP 210234

RED

DNA: -

BOSCHKLOOF RHP 210234 - SP	-
0091918219 - 17-APR-21	0%

AFC - ICP -
 RI -
 Age / Calves - / -
 Avg. WI/Calv: / 0
 CALVINGS
 -

MEQUATLING WB150335 - SP	-
0082160383 - 01-AUG-15	0%

BOSCHKLOOF RHP 170017 - SP	-
0085396281 - 04-JUN-17	0%

AFC **33** ICP **414**
 RI **102** Avg. WI/Calv: **113 / 1**
 Age / Calves **3j.10m. / 2**

- RED BADLANDS CAPACITY 37W - SP	-
0078088192 - 23-FEB-09	0%

MEQUATLING BREEZEY 100148 - SP	-
0071196216 - 13-AUG-10	0%

AFC **24** ICP **420**
 RI **93** Avg. WI/Calv: **104 / 8**
 Age / Calves **10j.0m. / 8**

MILAGRO LENNOX 1233 - SP	-
0078023975 - 21-OCT-12	0%

PARKER DJP0715 - SP	-
0065329278 - 02-OCT-07	2%

AFC **24** ICP **393**
 RI **113** Avg. WI/Calv: **100 / 5**
 Age / Calves **10j.7m. / 9**

- RED UBAR HIGH CAPACITY 224 - -	-
0078088184 - 01-JAN-95	0%

- RED BADLANDS RED CEDAR 311 - -	-
0078088176 - 01-JAN-95	0%

- RED FINE LINE MULBERRY 26P - SP	-
0069124683 - 31-JAN-04	0%

MEQUATLING BREEZEY 060189 - SP	-
0064355696 - 26-AUG-06	0%

- RED 6 MILE FULL THROTTLE 171T - SP	-
0068938711 - 19-FEB-07	0%

WOODVIEW RED ECHI 7 713 - SP	-
0065579773 - 10-NOV-07	7%

VEEJAY TARGETLINE 3601 - SP	H
0045952850 - 25-APR-02	3%

VEEJAY 02 3689 - SP	-
0046660049 - 11-SEP-02	2%

CALVING EASE		MILK	CALF GRWTH	MAINTENANCE		GROWTH TEST					In Vitro
****		****	*****	***							Flushings/Embrios/Calves: 0/0/0
Birth wght	Birth Mat.	Milk	Wean wght	12M	Mature wght	ADG	Kleiber	FCR	Raum Punt	Length	Tests:Phase A
97	103	103	124	124	117	115	110	109	112	119	Vacc. -
1.79 ₆₉	.26 ₄₈	6.7 ₄₅	36.5 ₆₅	60.6 ₄₀	58.5 ₃₀	271 ₃₆	134.2 ₃₆	-97 ₂₁	.9 ₄₁	63.4 ₃₉	
33			307 (113)	- (-)		-	110.	109	-	-	

Remarks:
 An excellent well balanced heifer that stands out. Approximately 6 months certified pregnant to Red DKF Razor.

Breeding value index
 Breeding value
 Weights/Index

LOT 41

0675681, ANNELINE PARKER TRUST, 30 REITZ ROAD, MILLPARK, PORT ELIZABETH, 6000, (T)082555779



Name Ident. number Sex Section Reg. number Birth Date
BOSCHKLOOF RHP 210249 FEMALE SP 0092562610 22-JUN-21

RHP 210249

RED

DNA: -

BOSCHKLOOF RHP 210249 - SP	-
0092562610 - 22-JUN-21	1%

AFC - ICP -
 RI -
 Age / Calves - / -
 Avg. WI/Calv: / 0
 CALVINGS
 -

MEQUATLING WB150335 - SP	-
0082160383 - 01-AUG-15	0%

BOSCHKLOOF RHP 170006 - SP	-
0085396398 - 08-MAY-17	1%

AFC **35** ICP **417**
 RI **99** Avg. WI/Calv: **104 / 2**
 Age / Calves **5j.2m. / 3**

- RED BADLANDS CAPACITY 37W - SP	-
0078088192 - 23-FEB-09	0%

MEQUATLING BREEZEY 100148 - SP	-
0071196216 - 13-AUG-10	0%

AFC **24** ICP **420**
 RI **93** Avg. WI/Calv: **104 / 8**
 Age / Calves **10j.0m. / 8**

MILAGRO LENNOX 1233 - SP	-
0078023975 - 21-OCT-12	0%

PARKER DJP 140288 - SP	-
0080232028 - 15-SEP-14	1%

AFC **32** ICP **377**
 RI **110** Avg. WI/Calv: **106 / 4**
 Age / Calves **6j.9m. / 5**

- RED UBAR HIGH CAPACITY 224 - -	-
0078088184 - 01-JAN-95	0%

- RED BADLANDS RED CEDAR 311 - -	-
0078088176 - 01-JAN-95	0%

- RED FINE LINE MULBERRY 26P - SP	-
0069124683 - 31-JAN-04	0%

MEQUATLING BREEZEY 060189 - SP	-
0064355696 - 26-AUG-06	0%

- RED 6 MILE FULL THROTTLE 171T - SP	-
0068938711 - 19-FEB-07	0%

WOODVIEW RED ECHI 7 713 - SP	-
0065579773 - 10-NOV-07	7%

MEQUATLING LOVE WARROIR - SP	-
0066591843 - 22-JUN-08	4%

VEEJAY 02 3647 - SP	-
0046361408 - 21-AUG-02	0%

CALVING EASE		MILK	CALF GRWTH	MAINTENANCE		GROWTH TEST					In Vitro
***		***	*****	***							Flushings/Embrios/Calves: 0/0/0
Birth wght	Birth Mat.	Milk	Wean wght	12M	Mature wght	ADG	Kleiber	FCR	Raum Punt	Length	Tests:Phase A
96	100	98	125	125	119	114	110	109	109	117	Vacc. -
1.9 ₆₉	.37 ₄₈	5.3 ₄₆	37.7 ₆₄	61.9 ₄₀	60.7 ₃₁	269 ₃₇	134.6 ₃₇	-98 ₂₃	.7 ₄₂	60.6 ₄₀	
34			342 (108)	- (-)		-	110.	109	-	-	

Remarks:
 A feminine heifer with all the correct attributes. Approximately 3 months certified pregnant to Milagro Twitch.

Breeding value index
 Breeding value
 Weights/Index

LOT 42

0552145, ANDREW MASTERSON FAMILY TRUST, P.O. BOX 117, HUMANSDORP, 6300, (T)083-321 2405



Name Ident. number Sex Section Reg. number Birth Date
MILAGRO ACM 210025 FEMALE SP 0091751909 05-APR-21

MOIRA 2125 RED

DNA: U4347U046

MILAGRO MOIRA 2125 - SP -
 0091751909 - 05-APR-21 0%

AFC 29 ICP -
 RI 112
 Age / Calves 2j,5m, / 1
 Avg. WI/Calv: / 0
 CALVINGS
 09/23

- RED DOUBLE B BULLSEYE 1B - SP -
 0085113207 - 03-FEB-14 0%

MILAGRO MOIRA 1733 - SP -
 0085965630 - 14-AUG-17 0%

AFC 32 ICP 364
 RI 110 Avg. WI/Calv: 101 / 3
 Age / Calves 5j,8m, / 4

- RED SOO LINE POWER EYE 161X - SP -
 0084062942 - 04-FEB-10 0%

- RED BLAIRS PRICILLA 44Z - -
 0085113199 - 01-JAN-11 0%

AFC - ICP -
 RI - Avg. WI/Calv: / 0
 Age / Calves - / -

- RED SIX MILE GRAND SLAM 130Z - SP -
 0081190043 - 27-FEB-12 0%

MILAGRO MOIRA 1512 - SP -
 0082601618 - 19-APR-15 0%

AFC 28 ICP 421
 RI 112 Avg. WI/Calv: 104 / 2
 Age / Calves 3j,5m, / 2

- RED COCKBURN RIBEYE 308U - -
 0084062355 - 01-JAN-90 0%

- RED TR LYNN 301R - -
 0084062934 - 01-JAN-00 0%

- RED RINGSTEAD KARGO 215U - SP -
 0084934082 - 22-FEB-08 0%

- RED BRYLOR PRISCILLA 67W - SP -
 0084936244 - 12-FEB-09 8%

- RED VGW GAME PLAN 816 - -
 0081179541 - 01-JAN-90 0%

- RED SIX MILE REBECCA 216X - -
 0081179616 - 01-JAN-90 0%

- RED LAZY MC HONKY TONK 11X - SP -
 0075863209 - 01-FEB-10 0%

- DE-PANNE MOIRA 4DE - SP -
 0066287061 - 06-MAY-07 0%

CALVING EASE ***	MILK ***	CALF GRWTH *****	MAINTENANCE ****	GROWTH TEST					In Vitro			
				ADG	Kleiber	FCR	Raum Punt	Length	Flushings/Embrios/Calves:	Tests:Phase A		
Birth wght	Birth Mat.	Milk	Wean wght	12M	Mature wght	ADG	Kleiber	FCR	Raum Punt	Length	0/0/0	
83	102	83	126	126	100	115	109	118	111	116		Vacc. -
3.05 ₇₀	.29 ₄₇	.9 ₄₉	42 ₆₇	62.7 ₅₀	38.7 ₄₀	272 ₄₀	133 ₄₀	-115 ₈	.8 ₄₄	59.9 ₄₃		
36			309 (118)	- (-)		-	109.	118	-	-		

Remarks:
 A Bullseye daughter with very good figures. She is selling with a 5 week old bull calf (ACM2391), sired by Township.

LOT 43

0552145, ANDREW MASTERSON FAMILY TRUST, P.O. BOX 117, HUMANSDORP, 6300, (T)083-321 2405



Name Ident. number Sex Section Reg. number Birth Date
MILAGRO ACM 210041 FEMALE SP 0092013218 13-MAY-21

ELLE 2141 RED

DNA: U5968U012

MILAGRO ELLE 2141 - SP -
 0092013218 - 13-MAY-21 0%

AFC - ICP -
 RI -
 Age / Calves - / -
 Avg. WI/Calv: / 0
 CALVINGS
 -

- 3SCC DOMAIN A163 - SP -
 0085546265 - 26-MAR-13 0%

MILAGRO ELLE 1818 - SP -
 0087291852 - 25-MAR-18 0%

AFC 25 ICP 452
 RI 111 Avg. WI/Calv: 102 / 3
 Age / Calves 4j,7m, / 3

- BECKTON DOMINOR T122 Z1 - -
 0085545978 - 01-JAN-97 0%

- 3SCC EUCLA X723 - -
 0085546232 - 01-JAN-03 0%

AFC - ICP -
 RI - Avg. WI/Calv: / 0
 Age / Calves - / -

- RED SOO LINE POWER EYE 161X - SP -
 0084062942 - 04-FEB-10 0%

MILAGRO ELLE 1540 - SP -
 0082601543 - 29-SEP-15 0%

AFC 30 ICP 424
 RI 101 Avg. WI/Calv: 102 / 2
 Age / Calves 3j,7m, / 2

- BECKTON DOMINOR Z1 R610 - -
 0085538676 - 01-JAN-95 0%

- BKT LARKABEL R038 WA - -
 0085538817 - 01-JAN-90 0%

- BASIN HOBO 0545 - -
 0085546182 - 01-JAN-01 0%

- BSKF EUCLA U278 - -
 0085546224 - 01-JAN-90 0%

- RED COCKBURN RIBEYE 308U - -
 0084062355 - 01-JAN-90 0%

- RED TR LYNN 301R - -
 0084062934 - 01-JAN-00 0%

MILAGRO LENNOX 1233 - SP -
 0078023975 - 21-OCT-12 0%

MILAGRO ELLE 1207E - SP -
 0075623850 - 18-APR-12 0%

CALVING EASE ***	MILK ****	CALF GRWTH ****	MAINTENANCE ****	GROWTH TEST					In Vitro			
				ADG	Kleiber	FCR	Raum Punt	Length	Flushings/Embrios/Calves:	Tests:Phase A		
Birth wght	Birth Mat.	Milk	Wean wght	12M	Mature wght	ADG	Kleiber	FCR	Raum Punt	Length	0/0/0	
89	109	101	105	105	84	104	104	110	99	98		Vacc. -
2.5 ₇₀	.01 ₄₀	6.1 ₄₄	28.8 ₆₇	45.5 ₄₈	19.4 ₃₃	221 ₂₂	120.1 ₂₂	-100 ₄	-.1 ₂₄	42.3 ₂₄		
38			279 (104)	- (-)		-	104.	110	-	-		

Remarks:
 She is a Domain daughter out of the well known Milagro Elle family. Due to calf on 12/10/2023 from Hedge Fund.

LOT 44

0552145, ANDREW MASTERSON FAMILY TRUST, P.O. BOX 117,HUMANSDORP,6300,
(T)083-321 2405



Name Ident. number Sex Section Reg. number Birth Date
MILAGRO ACM 210024 FEMALE SP 0091751842 05-APR-21

JESSICA 2124 BLACK

DNA: U4347U045

MILAGRO JESSICA 2124 - SP -
0091751842 - 05-APR-21 2%

AFC 29 ICP -
RI 112
Age / Calves 2j,5m. / 1
Avg. WI/Calv: / 0
CALVINGS
09/23

MILAGRO QUEBEC 1704 - SP -
0085165330 - 09-FEB-17 1%

GREENFIELD MJK170021 - SP -
0085752640 - 08-AUG-17 1%

AFC 31 ICP 454
RI 101 Avg. WI/Calv:96 / 2
Age / Calves 5j,0m. / 3

- VISION UNANIMOUS 1418 - SP -
0081835035 - 22-JAN-11 0%

MILAGRO POWER 1324 - SP -
0078780798 - 14-SEP-13 2%

AFC 29 ICP 368
RI 109 Avg. WI/Calv: 111 / 3
Age / Calves 8j,8m. / 6

NIEUWOUDIA IRON MOUNTAIN - SP -
0075804559 - 04-JUL-12 2%

SCHEEPERSRUST CBR JESICA 220 - SP -
0075511865 - 13-AUG-12 1%

AFC 23 ICP 366
RI 113 Avg. WI/Calv: 111 / 3
Age / Calves 5j,11m. / 5

- VISIONTOPLINE STOCKMAN --
0081833998 - 01-JAN-06 0%

- VISION EDELLA 665 --
0081834509 - 01-JAN-06 0%

MEQUATLING CASH - SP -
0068967884 - 15-JUN-09 1%

WOODVIEW POWER 6 156 - SP -
0064207095 - 19-JUL-06 1%

- S A V IRON MOUNTAIN 8066 - SP -
0073801953 - 24-FEB-08 1%

NIEUWOUDIA RENATHA - SP -
0065752511 - 08-MAY-07 4%

MEQUATLING FORTRESS - SP -
0069054740 - 26-AUG-09 2%

SKILPADVLEI JESSICA 5 - SP -
0067009134 - 05-JUN-08 1%

CALVING EASE ***	MILK ****	CALF GRWTH ****	MAINTENANCE ***	GROWTH TEST					In Vitro			
				ADG	Kleiber	FCR	Raum Punt	Length	Flushings/Embrios/Calves:	Tests:Phase A		
Birth wght	Birth Mat.	Milk	Wean wght	12M	Mature wght	ADG	Kleiber	FCR	Raum Punt	Length	0/0/0	
103	90	118	116	116	112	111	108	110	112	113	Vacc. -	
1.23 ₇₀	.79 ₄₄	10.9 ₄₃	31.3 ₆₆	54.9 ₃₃	52.1 ₃₁	252 ₁₉	128.2 ₁₉	-100 ₁₁	.9 ₂₁	57.1 ₂₀		
36			259 (96)	- (-)		-	108.	110	-	-		

Remarks:
Another stylish Quebec daughter with good figures. She is selling with a 5 week old bull calf (ACM2390), sired by De Panne Locomotive DE17002.

Breeding value index
Breeding value
Weights/Index

LOT 45

0552145, ANDREW MASTERSON FAMILY TRUST, P.O. BOX 117,HUMANSDORP,6300,
(T)083-321 2405



Name Ident. number Sex Section Reg. number Birth Date
MILAGRO ACM 210039 FEMALE SP 0091889238 04-MAY-21

BLACK PRIDE 2139 BLACK

DNA: U4906U009

MILAGRO BLACK PRIDE 2139 - SP -
0091889238 - 04-MAY-21 3%

AFC 28 ICP -
RI 116
Age / Calves 2j,3m. / 1
Avg. WI/Calv: / 0
CALVINGS
08/23

MILAGRO REFLEX 1802 - SP -
0087291738 - 04-MAR-18 2%

MILAGRO BLACK PRIDE 1738 - SP -
0085965663 - 17-AUG-17 10%

AFC 33 ICP 345
RI 105 Avg. WI/Calv:105 / 1
Age / Calves 3j,8m. / 2

- SOO LINE LOCOMOTIVE 1403 - SP -
0084052398 - 01-NOV-11 0%

MILAGRO ELLE 1603 - SP -
0083387092 - 11-JAN-16 3%

AFC 26 ICP 399
RI 111 Avg. WI/Calv: 109 / 4
Age / Calves 6j,6m. / 5

- CURTIN LUMINEER 2001 - SP -
0083904227 - 12-DEC-11 1%

MILAGRO BLACK PRIDE 1443 - SP -
0081131427 - 05-SEP-14 8%

AFC 35 ICP 428
RI 99 Avg. WI/Calv: 100 / 4
Age / Calves 8j,9m. / 6

- SOO LINE MOTIVE 9016 --
0084051952 - 01-JAN-02 0%

- SHADY BROOK EVERENTENSE 2039 --
0084052117 - 01-JAN-02 0%

- S A V RECORD HARVEST 2186 - SP -
0078921103 - 28-FEB-12 3%

MILAGRO ELLE 1319 - SP -
0078780731 - 02-SEP-13 0%

- S A V BRILLIANCE 8077 - SP -
0071479067 - 24-FEB-08 2%

- BLUESTON CAF FOREVERLADY 0200 --
0083904136 - 01-JAN-04 0%

- S A V RADIANCE 0801 - SP -
0079348157 - 09-JAN-10 7%

WOODVIEW BLACK PRIDE 7 471 - SP -
0064821291 - 24-JUL-07 4%

CALVING EASE ***	MILK ****	CALF GRWTH ****	MAINTENANCE ****	GROWTH TEST					In Vitro			
				ADG	Kleiber	FCR	Raum Punt	Length	Flushings/Embrios/Calves:	Tests:Phase A		
Birth wght	Birth Mat.	Milk	Wean wght	12M	Mature wght	ADG	Kleiber	FCR	Raum Punt	Length	0/0/0	
99	95	108	109	109	90	108	110	113	97	101	Vacc. -	
1.65 ₆₇	.57 ₃₈	8.1 ₃₈	28.8 ₆₂	49.1 ₂₇	27.1 ₂₉	242 ₂₀	135.2 ₂₀	-105 ₁₃	-.2 ₂₂	44.9 ₂₁		
38			282 (105)	- (-)		-	110.	113	-	-		

Remarks:
She is a great grand daughter of Woodview Black Pride 7471 and selling with a 7 week old bull calf (ACM2384), sired by Milagro Quebec ACM1704.

Breeding value index
Breeding value
Weights/Index

LOT 46

0552145, ANDREW MASTERSON FAMILY TRUST, P.O. BOX 117, HUMANSDORP, 6300, (T)083-321 2405



Name Ident. number Sex Section Reg. number Birth Date
MILAGRO ACM 200020 FEMALE SP 0090891698 17-MAY-20

CBR PRIDE 2020 BLACK

DNA: U2350U038

MILAGRO CBR PRIDE 2020 - SP	-
0090891698 - 17-MAY-20	2%

AFC **28** ICP -
 RI **114**
 Age / Calves **2j.3m. / 1**
 Avg. WI/Calv: **103 / 1**
 CALVINGS
09/22

JOYCES MR NUTRIFIX ET - SP	-
0083903567 - 01-JUL-16	1%

GREENFIELD MJK170024 - SP	-
0085752715 - 25-AUG-17	2%

AFC **33** ICP -
 RI **45** Avg. WI/Calv: **95 / 1**
 Age / Calves **2j.8m. / 1**

- S A V HARVESTOR 0338 - SP	-
0075795088 - 18-APR-10	5%

HOLVLEI MEDEA 3DE 0512 - SP	-
0063054449 - 07-JUL-05	0%

AFC **36** ICP **378**
 RI **107** Avg. WI/Calv: **108 / 6**
 Age / Calves **10j.5m. / 8**

NIEUWOUDIA IRON MOUNTAIN - SP	-
0075804559 - 04-JUL-12	2%

SCHEEPERSRUST CBR PRIDE 280 - SP	-
0081527392 - 12-JUN-14	2%

AFC **26** ICP **436**
 RI **106** Avg. WI/Calv: **102 / 6**
 Age / Calves **8j.2m. / 6**

- S A V HERITAGE 6295 - SP	-
0068974229 - 01-MAR-06	1%

- S A V EMBLYNETTE - -	-
0075795070 - 01-JAN-06	0%

DE-PANNE EXTRA - SP	-
0046385977 - 31-JUL-02	0%

MOLENKOP MEDEA 121 - SP	-
0044649499 - 22-APR-01	2%

- S A V IRON MOUNTAIN 8066 - SP	-
0073801953 - 24-FEB-08	1%

NIEUWOUDIA RENATHA - SP	-
0065752511 - 08-MAY-07	4%

MEQUATLING FORTRESS - SP	-
0069054740 - 26-AUG-09	2%

SCHEEPERSRUST CBR PRIDE 9114 - SP	-
0069391977 - 21-JUL-09	1%

Breeding value index	CALVING EASE		MILK	CALF GRWTH	MAINTENANCE		GROWTH TEST					In Vitro	
	**		****	****	****		ADG	Kleiber	FCR	Raam Punt	Length	Flushings/Embrios/Calves:	Tests:Phase A
Birth wght	76	92	103	117	117	80	106	107	110	106	101	0/0/0	
Breeding value	3.72 ₆₉	.72 ₅₁	6.6 ₅₃	35.7 ₆₄	55.2 ₃₄	14.7 ₄₅	230 ₃₆	127.9 ₃₈	-99 ₂₀	.5 ₄₀	45.2 ₃₉		
Weights/Index	39			263 (95)	- (-)		-	107.	110	-	-		

Remarks:
 A pregnant cow, with good figures. In calf to Milagro Unit ACM2123, due 09/01/2024.

LOT 47

0552145, ANDREW MASTERSON FAMILY TRUST, P.O. BOX 117, HUMANSDORP, 6300, (T)083-321 2405



Name Ident. number Sex Section Reg. number Birth Date
MILAGRO ACM 210022 FEMALE SP 0091751834 26-MAR-21

CBR PRIDE 2122 BLACK

DNA: U4347U043

MILAGRO CBR PRIDE 2122 - SP	-
0091751834 - 26-MAR-21	2%

AFC - ICP -
 RI -
 Age / Calves - / -
 Avg. WI/Calv: / 0
 CALVINGS
 -

- PVF INSIGHT 0129 - SP	-
0081231201 - 17-APR-10	0%

SCHEEPERSRUST katelyn 7 - SP	-
0078183472 - 29-JUN-13	2%

AFC **24** ICP **349**
 RI **121** Avg. WI/Calv: **93 / 7**
 Age / Calves **9j.7m. / 9**

- S A V BRILLIANCE 8077 - SP	-
0071479067 - 24-FEB-08	2%

- PVF MISSIE 790 - -	-
0081231193 - 01-JAN-02	0%

AFC - ICP -
 RI - Avg. WI/Calv: / 0
 Age / Calves - / -

MEQUATLING FORTRESS - SP	-
0069054740 - 26-AUG-09	2%

SCHEEPERSRUST CBR PRIDE 9114 - SP	-
0069391977 - 21-JUL-09	1%

AFC **36** ICP **360**
 RI **111** Avg. WI/Calv: **101 / 5**
 Age / Calves **9j.10m. / 8**

- S A V BISMARCK 5682 - SP	-
0067175786 - 01-FEB-05	1%

- S A V BLACKCAP MAY 5270 - -	-
0071479059 - 03-MAR-03	3%

- P V F NEW HORIZON 001 - SP	-
0061951851 - 02-JAN-00	0%

- P V F MISS RAPTOR 024 - -	-
0081230872 - 01-JAN-97	0%

MEQUATLING FORT KNOX - SP	-
0065069718 - 11-SEP-07	1%

MEQUATLING BLOSSOM - SP	-
0061403705 - 02-SEP-05	1%

MEQUATLING BOOMSHALAKA - SP	-
0062845052 - 02-JUL-06	2%

MEQUATLING PRIDE 02 192 - SP	-
0046118154 - 25-JUL-02	0%

Breeding value index	CALVING EASE		MILK	CALF GRWTH	MAINTENANCE		GROWTH TEST					In Vitro	
	***		****	***	****		ADG	Kleiber	FCR	Raam Punt	Length	Flushings/Embrios/Calves:	Tests:Phase A
Birth wght	108	85	109	102	102	86	103	111	107	101	88	0/0/0	
Breeding value	.78 ₇₁	1.01 ₅₁	8.3 ₅₁	18.3 ₆₆	43.2 ₄₃	21.6 ₃₄	216 ₄₂	137.5 ₄₂	-93 ₂₃	.1 ₄₇	31.8 ₄₅		
Weights/Index	36			224 (81)	- (-)		-	111.	107	-	-		

Remarks:
 An Insight daughter out of a very fertile maternal family line, boasting an ICP of 349 days over 9 calves. In calf to Milagro Quebec ACM1704, due 16/10/2023.

LOT 48

0552145, ANDREW MASTERSON FAMILY TRUST, P.O. BOX 117,HUMANSDORP,6300, (T)083-321 2405



Name Ident. number Sex Section Reg. number Birth Date
MILAGRO ACM 210104 FEMALE SP 0092673185 12-OCT-21

JESSICA 21104 BLACK

DNA: U6945U009

MILAGRO JESSICA 21104 - SP -
 0092673185 - 12-OCT-21 3%

AFC - ICP -
 RI -
 Age / Calves - / -
 Avg. WI/Calv: / 0
 CALVINGS -

MILAGRO ROVER 1817 - SP -
 0087291845 - 24-MAR-18 3%

SCHEEPERSRUST CBR JESICA 341 - SP -
 0082396078 - 13-JUL-15 1%

AFC 29 ICP 361
 RI 115 Avg. WI/Calv:100 / 5
 Age / Calves 7j.4m. / 6

- S A V RENOWN 3439 - SP -
 0084179738 - 07-JAN-13 0%

MILAGRO PHANTOM 1315 - SP -
 0078780699 - 11-AUG-13 1%

AFC 28 ICP 378
 RI 114 Avg. WI/Calv: 100 / 7
 Age / Calves 9j.6m. / 8

NIEUWOUDIA IRON MOUNTAIN - SP -
 0075804559 - 04-JUL-12 2%

SCHEEPERSRUST CBR JESICA 220 - SP -
 0075511865 - 13-AUG-12 1%

AFC 23 ICP 366
 RI 113 Avg. WI/Calv: 111 / 3
 Age / Calves 5j.11m. / 5

- RITO 707 OF IDEAL 3407 7075 - -
 0078173671 - 01-JAN-00 0%

- SAV BLACKCAP MAY 4136 - -
 0068974187 - 14-JAN-03 3%

MEQUATLING CASH - SP -
 0068967884 - 15-JUN-09 1%

WOODVIEW LADY PHANTOM 7 554 - SP -
 0064922958 - 14-AUG-07 1%

- S A V IRON MOUNTAIN 8066 - SP -
 0073801953 - 24-FEB-08 1%

NIEUWOUDIA RENATHA - SP -
 0065752511 - 08-MAY-07 4%

MEQUATLING FORTRESS - SP -
 0069054740 - 26-AUG-09 2%

SKILPADVLEI JESSICA 5 - SP -
 0067009134 - 05-JUN-08 1%

CALVING EASE ***	MILK *****	CALF GRWTH *****	MAINTENANCE ***	GROWTH TEST					In Vitro			
				ADG	Kleiber	FCR	Raum Punt	Length	Flushings/Embrios/Calves:	Tests:Phase A		
Birth wght	Birth Mat.	Milk	Wean wght	12M	Mature wght	ADG	Kleiber	FCR	Raum Punt	Length	0/0/0	
96	93	113	107	107	99	112	114	112	103	103	Vacc. -	
1.93 ₆₈	.65 ₄₄	9.6 ₄₄	28.2 ₆₂	47.3 ₃₃	36.8 ₂₆	260 ₂₀	145.6 ₂₀	-104 ₁₃	.2 ₂₁	46.9 ₂₁		
40			250 (92)	- (-)		-	114.	112	-	-		

Remarks:
 A pregnant heifer, with a milk index of 112. Her dam has an ICP of 361 days over 6 calves. In calf to De Panne Locomotive DE 17002, due 02/03/2024.

Breeding value index
 Breeding value
 Weights/Index

LOT 49

0675681, ANNELINE PARKER TRUST, 30 REITZ ROAD,MILLPARK,PORT ELIZABETH, 6000,(T)0825555779



Name Ident. number Sex Section Reg. number Birth Date
BOSCHKLOOF RHP 210250 FEMALE SP 0092562628 24-JUN-21

RHP 210250 RED

DNA: -

BOSCHKLOOF RHP 210250 - SP -
 0092562628 - 24-JUN-21 1%

AFC - ICP -
 RI -
 Age / Calves - / -
 Avg. WI/Calv: / 0
 CALVINGS -

MEQUATLING WB150335 - SP -
 0082160383 - 01-AUG-15 0%

BOSCHKLOOF RHP 170007 - SP -
 0085396422 - 12-MAY-17 0%

AFC 34 ICP 392
 RI 104 Avg. WI/Calv:95 / 2
 Age / Calves 6j.0m. / 4

- RED BADLANDS CAPACITY 37W - SP -
 0078088192 - 23-FEB-09 0%

MEQUATLING BREEZEY 100148 - SP -
 0071196216 - 13-AUG-10 0%

AFC 24 ICP 420
 RI 93 Avg. WI/Calv: 104 / 8
 Age / Calves 10j.0m. / 8

MILAGRO NICKLE 1442 - SP -
 0080067077 - 04-SEP-14 0%

PARKER DJP 130208 - SP -
 0077518827 - 22-APR-13 3%

AFC 29 ICP 465
 RI 96 Avg. WI/Calv: 102 / 4
 Age / Calves 7j.6m. / 5

- RED UBAR HIGH CAPACITY 224 - -
 0078088184 - 01-JAN-95 0%

- RED BADLANDS RED CEDAR 311 - -
 0078088176 - 01-JAN-95 0%

- RED FINE LINE MULBERRY 26P - SP -
 0069124683 - 31-JAN-04 0%

MEQUATLING BREEZEY 060189 - SP -
 0064355696 - 26-AUG-06 0%

- S A V RADJANCE 0801 - SP -
 0079348157 - 09-JAN-10 7%

MILAGRO MOIRA 1214 - SP -
 0075543504 - 01-JUN-12 1%

MEQUATLING LOVE WARROIR - SP -
 0066591843 - 22-JUN-08 4%

PARKER SURVIVOR - SP -
 0072446586 - 24-NOV-10 1%

CALVING EASE ***	MILK ***	CALF GRWTH *****	MAINTENANCE ***	GROWTH TEST					In Vitro			
				ADG	Kleiber	FCR	Raum Punt	Length	Flushings/Embrios/Calves:	Tests:Phase A		
Birth wght	Birth Mat.	Milk	Wean wght	12M	Mature wght	ADG	Kleiber	FCR	Raum Punt	Length	0/0/0	
95	96	95	122	122	112	112	110	108	106	110	Vacc. -	
1.95 ₆₉	.54 ₄₈	4.3 ₄₅	35.8 ₆₃	58.9 ₃₈	52.2 ₂₉	258 ₃₆	134.8 ₃₆	-95 ₂₂	.5 ₄₁	54.4 ₃₉		
34			318 (99)	- (-)		-	110.	108	-	-		

Remarks:
 A phenomenal heifer that is structurally very sound and that will undoubtedly breed well. Approximately 3 months certified pregnant to Milagro Twitch.

Breeding value index
 Breeding value
 Weights/Index

LOT 50

0675681, ANNELINE PARKER TRUST, 30 REITZ ROAD, MILLPARK, PORT ELIZABETH, 6000, (T)082555779



Name Ident. number Sex Section Reg. number Birth Date
BOSCHKLOOF RHP 210260 FEMALE SP 0092562685 30-AUG-21

RHP 210260 RED

DNA: -

BOSCHKLOOF RHP 210260 - SP -
 0092562685 - 30-AUG-21 0%

AFC - ICP -
 RI -
 Age / Calves - / -
 Avg. WI/Calf: / 0
 CALVINGS -

MILAGRO PORSCHE - SP -
 0084898352 - 24-MAY-16 0%

PARKER DJP 130232 - SP -
 0080012735 - 22-SEP-13 4%

AFC 32 ICP 410
 RI 105 Avg. WI/Calf: 98 / 6
 Age / Calves 9j,5m. / 7

- RED SIX MILE GRAND SLAM 130Z - SP -
 0081190043 - 27-FEB-12 0%

MILAGRO MILA 1226 - SP -
 0075873018 - 16-SEP-12 0%

AFC 29 ICP 469
 RI 102 Avg. WI/Calf: 104 / 3
 Age / Calves 4j,11m. / 3

MEQUATLING LOVE WARROIR - SP -
 0066591843 - 22-JUN-08 4%

PARKER DJP 100084 - SP P
 0071106256 - 05-JUL-10 1%

AFC 25 ICP 362
 RI 118 Avg. WI/Calf: 101 / 7
 Age / Calves 10j,0m. / 9

- RED VGW GAME PLAN 816 - - -
 0081179541 - 01-JAN-90 0%

- RED SIX MILE REBECCA 216X - - -
 0081179616 - 01-JAN-90 0%

- RED LAZY MC CC DETOUR 2W - SP -
 0073323305 - 15-JAN-09 0%

NICELLE MILA 10 - SP -
 0048828974 - 20-JUL-04 2%

MEQUATLING CHIEF WARHAWK - SP -
 0044000792 - 04-JUL-01 0%

MEQUATLING SUNSATON - SP -
 0044379287 - 22-FEB-01 0%

MEQUATLING HIGH FIDELITY - SP -
 0062996715 - 15-JUL-06 1%

VEEJAY 02 3651 - SP -
 0046659207 - 22-AUG-02 1%

CALVING EASE		MILK	CALF GRWTH	MAINTENANCE		GROWTH TEST					In Vitro
****		***	***	****							Flushings/Embrios/Calves: 0/0/0
Birth wght	Birth Mat.	Milk	Wean wght	12M	Mature wght	ADG	Kleiber	FCR	Raum Punt	Length	Tests:Phase A
102	101	95	98	98	98	99	99	98	96	97	Vacc. -
1.34 ₇₀	.35 ₄₉	4.4 ₄₈	25.1 ₆₄	40.2 ₃₆	36 ₃₁	197 ₃₂	106.9 ₃₂	-75 ₁₅	-3 ₃₅	40.6 ₃₄	
35			252 (100)	- (-)		-	99.	98	-	-	

Remarks:
 A heifer with an excellent pedigree that will add value to any herd. Approximately 3 months certified pregnant to Milagro Twitch.

Breeding value index
 Breeding value
 Weights/Index

LOT 51

0552145, ANDREW MASTERSON FAMILY TRUST, P.O. BOX 117, HUMANSDORP, 6300, (T)083-321 2405



Name Ident. number Sex Section Reg. number Birth Date
MILAGRO ACM 210012 FEMALE SP 0091751867 10-MAR-21

HOLSTER 2112 RED

DNA: U4347U033

MILAGRO HOLSTER 2112 - SP -
 0091751867 - 10-MAR-21 0%

AFC - ICP -
 RI -
 Age / Calves - / -
 Avg. WI/Calf: / 0
 CALVINGS -

- RED DOUBLE B BULLSEYE 1B - SP -
 0085113207 - 03-FEB-14 0%

MILAGRO HOLSTER 1841 - SP -
 0087292058 - 12-JUN-18 0%

AFC 33 ICP 496
 RI 97 Avg. WI/Calf: 107 / 2
 Age / Calves 4j,0m. / 2

- RED SOO LINE POWER EYE 161X - SP -
 0084062942 - 04-FEB-10 0%

- RED BLAIRS PRICILLA 44Z - - -
 0085113199 - 01-JAN-11 0%

AFC - ICP -
 RI - Avg. WI/Calf: / 0
 Age / Calves - / -

MILAGRO PAXTON 1602 - SP -
 0083387084 - 07-JAN-16 0%

HOLVLEI HOL 120105 - SP -
 0076821602 - 02-OCT-12 1%

AFC 30 ICP 398
 RI 109 Avg. WI/Calf: 91 / 4
 Age / Calves 6j,10m. / 5

- RED COCKBURN RIBEYE 308U - - -
 0084062355 - 01-JAN-90 0%

- RED TR LYNN 301R - - -
 0084062934 - 01-JAN-00 0%

- RED RINGSTEAD KARGO 215U - SP -
 0084934082 - 22-FEB-08 0%

- RED BRYLOR PRISCILLA 67W - SP -
 0084936244 - 12-FEB-09 8%

- S A V RECORD HARVEST 2186 - SP -
 0078921103 - 28-FEB-12 3%

MILAGRO ELLE 1208E - SP -
 0075623157 - 19-APR-12 0%

ROELOU SUNNYBOY - SP -
 0064064421 - 28-OCT-06 5%

HOLVLEI BEZ CARDES 2DE - SP -
 0064508518 - 03-AUG-06 2%

CALVING EASE		MILK	CALF GRWTH	MAINTENANCE		GROWTH TEST					In Vitro
****		***	****	****							Flushings/Embrios/Calves: 0/0/0
Birth wght	Birth Mat.	Milk	Wean wght	12M	Mature wght	ADG	Kleiber	FCR	Raum Punt	Length	Tests:Phase A
98	106	91	112	112	91	95	91	99	95	99	Vacc. -
1.74 ₆₉	.14 ₄₃	3.1 ₄₆	31.3 ₆₆	51.3 ₄₈	28.3 ₃₇	182 ₃₉	86.8 ₃₉	-77 ₁₀	-4 ₄₄	42.7 ₄₂	
37			298 (105)	- (-)		-	91.	99	-	-	

Remarks:
 A Bullseye daughter that weaned at 305kg. In calf to Domain, due 19/12/2023.

Breeding value index
 Breeding value
 Weights/Index

LOT 52

0552145, ANDREW MASTERSON FAMILY TRUST, P.O. BOX 117,HUMANSDORP,6300,
(T)083-321 2405



Name Ident. number Sex Section Reg. number Birth Date
MILAGRO ACM 210077 FEMALE SP 0092390293 25-AUG-21

MILA 2177

RED

DNA: U6944U002

MILAGRO MILA 2177 - SP -
0092390293 - 25-AUG-21 0%

AFC - ICP -
 RI -
 Age / Calves - / -
 Avg. WI/Calv: / 0
 CALVINGS -

- RED DKF RACER 8E - SP -
0091470757 - 18-JAN-17 0%

MILAGRO MILA 1107E - SP -
0075623439 - 14-JUN-11 0%

AFC 26 ICP 368
 RI 117 Avg. WI/Calv:100 / 10
 Age / Calves 11j.2m. / 10

- RED DKF RAZOR 55C - SP -
0087464236 - 27-JAN-15 1%

- RED DKFE MISS ACE 84C - -
0091463463 - 01-JAN-12 0%

AFC - ICP -
 RI - Avg. WI/Calv: / 0
 Age / Calves - / -

- RED FINE LINE MULBERRY 26P - SP -
0069124683 - 31-JAN-04 0%

NICELLE MILA 10 - SP -
0048828974 - 20-JUL-04 2%

AFC 34 ICP 407
 RI 103 Avg. WI/Calv: 99 / 6
 Age / Calves 10j.1m. / 7

- DKF ELIMINATOR 15A - -
0087464152 - 01-JAN-05 0%

- DKF MISS NET WORTH 21A - -
0087464210 - 01-JAN-06 0%

- RED SOO LINE POWER EYE 161X - SP -
0084062942 - 04-FEB-10 0%

- RED BLU DAWN MISS ILLICIT 359Z - -
0091463455 - 01-JAN-06 0%

- RED COMPASS MULBERRY 449M - SP -
0069124675 - 11-JAN-98 25%

- RED DUS FAYETTE 8G - -
0069124642 - 09-JAN-98 0%

PRINSVLEI RED CLOUD - SP -
0042511113 - 25-SEP-99 0%

PRINSVLEI ELNA - SP -
0043885425 - 07-JUL-00 6%

CALVING EASE ****	MILK ***	CALF GRWTH ****	MAINTENANCE ***			GROWTH TEST					In Vitro Flushings/Embrios/Calves: 0/0/0 Tests:Phase A
			12M	Mature wght	ADG	Kleiber	FCR	Raam Punt	Length		
Birth wght	Birth Mat.	Milk	Wean wght	12M	Mature wght	ADG	Kleiber	FCR	Raam Punt	Length	Vacc. -
92	110	89	106	106	106	107	107	109	113	107	
2.3 ₇₁	-.05 ₄₈	2.5 ₅₁	29.3 ₆₈	46.5 ₅₂	46 ₃₄	237 ₄₆	127.7 ₄₆	-97 ₂₂	1 ₄₉	50.9 ₄₈	
39			253 (99)	- (-)		-	107.	109	-	-	

Remarks:
 She ia a Racer daughter with good figures. Her dam has an ICP of 361 days over 10 calves. In calf to Hedge Fund, due 02/03/2024.

LOT 53

0552145, ANDREW MASTERSON FAMILY TRUST, P.O. BOX 117,HUMANSDORP,6300,
(T)083-321 2405



Name Ident. number Sex Section Reg. number Birth Date
MILAGRO ACM 210034 FEMALE SP 0091891119 25-APR-21

ELLE 2134

BLACK

DNA: U4906U004

MILAGRO ELLE 2134 - SP -
0091891119 - 25-APR-21 0%

AFC - ICP -
 RI -
 Age / Calves - / -
 Avg. WI/Calv: / 0
 CALVINGS -

- RED DAMAR TRUMP C512 - SP -
0088774237 - 01-FEB-15 0%

MILAGRO ELLE 1422 - SP -
0080205412 - 22-JUL-14 1%

AFC 44 ICP 368
 RI 94 Avg. WI/Calv:95 / 5
 Age / Calves 7j.8m. / 5

- RED SOO LINE POWER EYE 161X - SP -
0084062942 - 04-FEB-10 0%

- RED DAMAR OH BABY W168 - -
0088774229 - 01-JAN-06 0%

AFC - ICP -
 RI - Avg. WI/Calv: / 0
 Age / Calves - / -

- RED LAZY MC HONKY TONK 11X - SP -
0075863209 - 01-FEB-10 0%

MILAGRO ELLE 1210E - SP -
0075623173 - 24-APR-12 0%

AFC 27 ICP 399
 RI 111 Avg. WI/Calv: 104 / 9
 Age / Calves 11j.1m. / 9

- RED COCKBURN RIBEYE 308U - -
0084062355 - 01-JAN-90 0%

- RED TR LYNN 301R - -
0084062934 - 01-JAN-00 0%

- RED FINE LINE MULBERRY 26P - SP -
0069124683 - 31-JAN-04 0%

- RED T-S OLIVIA 706P - -
0067707810 - 07-JAN-90 0%

- RED LAZY MC COWBOY CUT 26U - -
0075863191 - 01-JAN-90 0%

- RED YY PATTY 701T - -
0075863183 - 01-JAN-90 0%

- RED LAZY MC CC DETOUR 2W - SP -
0073323305 - 15-JAN-09 0%

NICELLE ELLE 09 - SP -
0061153672 - 22-JUN-05 1%

CALVING EASE ****	MILK ***	CALF GRWTH ***	MAINTENANCE ****			GROWTH TEST					In Vitro Flushings/Embrios/Calves: 0/0/0 Tests:Phase A
			12M	Mature wght	ADG	Kleiber	FCR	Raam Punt	Length		
Birth wght	Birth Mat.	Milk	Wean wght	12M	Mature wght	ADG	Kleiber	FCR	Raam Punt	Length	Vacc. -
106	101	96	104	104	96	101	105	108	99	91	
.93 ₇₀	.35 ₄₉	4.5 ₅₁	24 ₆₇	45 ₅₄	33.8 ₃₇	208 ₄₅	121.5 ₄₅	-95 ₁₉	-1 ₄₉	35.2 ₄₈	
39			248 (90)	- (-)		-	105.	108	-	-	

Remarks:
 A Trump daughter and grand daughter of Milagro Elle 1210, National Champion female 2019. In calf to Hedge Fund, due 23/03/2024.



Seed Solutions

Agronomy Crops



Chicory | Clovers | Cover Crops | Inoculants | Lucerne | Maize | Oats | Rye
Ryegrass | Sorghum | Subtropical Grasses | Teff | Triticale

Rehan Vosloo

+27(0) 82 3011 613

365saad@gmail.com

Like us



Follow us



Eastern & Western Cape, South Africa



COMMERCIAL FEMALES

COMMERCIAL FEMALES

Lot no	Colour	Details	Price	Buyer
54	Black Angus	3 x Pregnant heifers 5 to 6 mnths		
55	Black Angus	3 x Pregnant heifers 5 to 6 mnths		
56	Red Angus	3 x Pregnant heifers 5 to 6 mnths		
57	Red Angus	3 x Pregnant heifers 5 to 6 mnths		



HAMPSHIRE EWES					
Lot no	ID no	SECTION	Details	Price	Buyer
58	ACM22037	B	DOB 25/07/2022		
59	ACM22032	B	DOB 20/06/2022		
60	ACM22036	B	DOB 25/07/2022		
61	PM220021	B	DOB 25/08/2022		
62	PM220007	B	DOB 18/08/2022		
63	PM220014	B	DOB 20/08/2022		
64	ACM22048	A	DOB 01/07/2022		
65	ACM22043	B	DOB 10/07/2022		
66	ACM22104	A	DOB 01/01/2022		
67	ACM22115	A	DOB 01/07/2022		
68	ACM22116	A	DOB 10/08/2022		
69	ACM22117	A	DOB 01/07/2022		
70	ACM22118	A	DOB 01/07/2022		
71	LP2221	A	Ewe & Lamb (LP2346 - ram)		
72	LP2216	A	Ewe & Lamb (LP2338 - ewe)		
73	LP2205	A	Ewe & Lamb (LP2352 - ewe)		

HAMPSHIRE RAMS					
Lot no	ID no	SECTION	Details	Price	Buyer
74	ACM22002	B	DOB 23/04/2022		
75	ACM22004	B	DOB 25/04/2022 - TWIN		
76	JTS22003	SP	DOB 14/07/2022		
77	PM220012	B	DOB 22/08/2022		
78	PM220019	B	DOB 20/08/2022		
79	LP2214	Commercial	DOB 17/06/2022		
80	LP2209	A	DOB 17/06/2022		
81	ACM22016	B	DOB 05/05/2022		
82	ACM22021	B	DOB 14/05/2022		
83	ACM22008	B	DOB 29/04/2022 - TWIN		
84	ACM22023	B	DOB 30/04/2022		
85	PM220022	B	DOB 25/08/2022		
86	ACM22025	B	DOB 08/05/2022		
87	ACM22005	B	DOB 25/04/2022 - TWIN		
88	ACM22030	B	DOB 06/06/2022 - TWIN		
89	ACM22033	B	DOB 01/07/2022 - TWIN		
90	ACM22007	B	DOB 27/04/2022		
91	ACM22001	B	DOB 22/04/2022		

NOTAS

A series of horizontal dotted lines for writing notes.



RULES OF AUCTION - TERMS AND CONDITIONS

1. This auction will be held under the control of BKB Limited (Pty) Limited (hereinafter referred to as the Auctioneer") with business premises situate at: Rhebok Street, Industrial Area, Humansdorp, 6300
2. The Auctioneer is hereby appointed by the Purchaser and Seller to act for and on behalf of the Purchaser and Seller as agent in accordance with Section 54 of the Value-Added Tax Act, 1991, in respect of all tax invoices, credit and/or debit notes in respect of all livestock, game and/or goods offered at the auction or any costs of transport and insurances premiums paid for on behalf of the Purchaser and Seller.
3. The rules of this auction shall comply with the provisions of Section 45 and all relevant regulations to the Consumer Protection Act 68 of 2008.
4. For greater clarity Section 45(1-4) states as follows:
 - 4.1 In this section, "auction" includes a sale in execution of or pursuant to a court order, to the extent that the order contemplates that the sale is to be conducted by an auction. 4.2 When goods are put up for sale by auction, each lot is, unless there is evidence to the contrary, regarded to be the subject of a separate transaction.
 - 4.3 A sale by auction is complete when the auctioneer announces its completion by the fall of the hammer, or in any other customary manner, and until that announcement is made, a bid may be retracted. 4.4 Notice must be given in advance that a lot or sale by auction is subject to:
 - 4.4.1 A reserved or upset price; or
 - 4.4.2 A right to bid by or on behalf of the owner or auctioneer, in which case the owner or auctioneer, or any one person on behalf of the owner or auctioneer, as the case may be, may bid at the auction.
5. Until the fall of the hammer as contemplated in Section 45(3) of the Act, any bid may be retracted or declined by the Auctioneer if not compliant with the regulations of the Consumer Protection Act.
6. The auction is not an absolute auction but subject to reserved prices settled by the sellers and as pointed out by the Auctioneer prior to the sale of the set asset or lot.
7. The auction shall take place at the date and time as advertised or publicised and will not be postponed or delayed to enable any member or group of the public to partake in the auction.
8. Should the Auctioneer become aware of any fault on advertising material or any other publication or amendment to these Rules of Auction, the Auctioneer will prior to the auction point out and when necessary amend such mistakes in the advertisement or publication.
9. Any person attending the auction to enter a bid, must prior to the auction register as a buyer on the bidders' roll and comply with the conditions as set out in Chapter 1 of FICA 2001. The purchaser shall sign the bidders' roll/card.
10. Any person who attends the auction to enter a bid on behalf of another person must be duly authorised thereto by means of a written letter of authority from its principal and such a person together with his principal must both register prior to the auction on the bidders' roll and provide all necessary information as required in Chapter 1 of the regulations issued in terms of FICA 2001 with regard to proof of its identity. The bidders' roll must be signed by such a person and on behalf of its principal.
11. Where the principal is a company the letters of authority shall appear on the letterhead of the company together with a certified copy of a resolution authorizing the person to bid on behalf of the company. (For purposes of this rule any reference to a company will include any reference to juristic person including partnerships, trusts or incorporated entities).
12. All purchasers have a right of inspection of all goods put up for sale and the auctioneer shall provide reasonable time and access prior to the start of the auction for such an inspection.
13. All livestock and goods are sold "voetstoots" and the purchasers do not enjoy the protection of Section 55 and 56 of the Consumer Protection Act.
14. Any information provided regarding the quality, breeding, age, date of insemination, condition, reproductive status or any information regarding health, production or mass or any other aspect of the livestock, is provided by the seller and any misrepresentation by the seller is without the cooperation or knowledge of the Auctioneer. Any right of recourse as a result of such misrepresentation shall be against the seller.
15. Any bid made does not include VAT which, where applicable, will be added to the bidding price for which a VAT invoice will be issued.
16. All sales are for cash and purchase price is payable immediately to the Auctioneer on acceptance of the bid unless otherwise arranged prior to the auction with the Auctioneer. Any payment made in cash is further subject to cash or any other handling fees. Should the Purchaser however fail to make payment within 7 days from date of delivery, BKB will be entitled to add interest calculated at the current bank prime rate plus 5% to the capital amount outstanding. The interest will be calculated monthly and capitalised.
17. Should the purchaser not pay the purchase price immediately and has failed to make arrangements for payment with the Auctioneer, then the Auctioneer can/will cancel the sale and treat the assets or lots as unsold lots which may again be presented on the auction for sale or be sold out of hand by means of liaison services, depending on the sellers mandate to the auctioneer.
18. Ownership in the lot or assets will remain that of the seller until the purchase price has been paid in full to the seller with the provision that the risk in the assets or lot passes to the purchaser at the fall of the hammer as set out in clause 24.
19. In the event that Purchaser has made necessary finance arrangements with BKB, the Purchaser hereby authorises BKB to pay the purchase price or costs of transport, insurance and any other agreed cost, minus BKB's commissions, on behalf of the Purchaser to the Seller and other service providers, in which event the said payment by BKB on behalf of the Purchaser will be deemed to be monies lent and advanced, the terms and conditions thereof being agreed with the Purchaser in a separate credit agreement or sale agreement. All payments made by BKB to the Seller on behalf of the Purchaser in terms of this clause will be made after the lapse of 5 (Five) working days from date of delivery of the asset to the Purchaser. Any payment made by BKB to the Seller prior to the lapse of the 5 (Five) working day period is made at the sole discretion of BKB and not an enforceable indulgence.
20. For as long as any amount is owing to BKB by the Purchaser, the Purchaser may not, where the assets are the subject of security of the Purchasers credit facility with BKB, relinquish possession of the said asset, nor may he cede the asset or any of its rights and obligations in terms of this agreement to a third party or otherwise encumber, sell or dispossess the said asset or allow it to become the subject of any right of retention, hypothec, pledge or any encumbrance, whatever the cause thereof may be. BKB may be entitled to cede its rights and obligations without affecting its rights of recourse for any monies still due to it.
21. In the event of the Seller already being indebted to BKB or any of its affiliates at the time of this auction, the Seller hereby irrevocably authorises BKB to set off the purchase price due to the Seller by BKB (minus BKB's commission) against the amounts due by the Seller to BKB.
22. Where BKB, in terms of a credit agreement, lent and advanced monies to the Purchaser for payment of the purchase price of any asset or payment of any transport costs or insurance premiums, no defence of whatsoever nature which the Purchaser may raise against the Seller or the transport contractor or the insurance company may be raised against BKB and the Purchaser shall still be obligated to pay all amounts owing, together with further interest and costs thereon raised in terms of the credit agreement or sale agreement, to be BKB. The conditions of this clause do not interfere with the rights, entitlements or remedies the Purchaser may have against the Seller, transport contractor or insurance company.
23. Neither the Purchaser, nor the Seller, shall be entitled to apply set-off or to retain any monies owing arising from any claim they may have against each other or BKB with regards to any amount owing in terms hereof. Each lot shall immediately after the fall of the hammer deemed to be delivered to the purchaser at which time the risk will pass to the purchaser who will at his own risk and cost remove the lots or assets from the auction terrain. Removal of any assets or lots however will not be allowed by the Auctioneer until payment of the purchase price by the purchaser or acceptable arrangements for payment thereof have been made by the purchaser with the Auctioneer.
24. Each lot shall immediately after the fall of the hammer deemed to be delivered to the purchaser at which time the risk will pass to the purchaser who will at his own risk and cost remove the lots or assets from the auction terrain. Removal of any assets or lots however will not be allowed by the Auctioneer until payment of the purchase price by the purchaser or acceptable arrangements for payment thereof have been made by the purchaser with the Auctioneer.
25. The Auctioneer will only be obliged to give reasons of the auction if such reasons are other than the voluntary sale of goods by its owners.
26. The bidders' roll and vendor roll will be available for inspection during the normal office hours at the business premises of the Auctioneer.
27. The rules of auction will only be read out at the auction if they were not available to the public at the place of business of the Auctioneer. In the event of livestock and game auctions, the rules of auction remain unchanged and are in general available at the business premises of the Auctioneer or on the website of the Auctioneer.
28. Under no circumstances will BKB be held liable for any loss or damage of any cause whatsoever albeit direct or indirect damages suffered by anyone if the livestock at the auction premises have to be placed under quarantine as a result of the presence of a livestock disease present. In such event BKB will have the right to cancel the auction as well as any already complete sales and no party will be entitled or have a right of recourse against BKB.
29. Any party requiring permits, removal certificate, documentation of identification or any other statutory prescribed document will solely be responsible for obtaining same. Any instructions to an auctioneer with regards to the loading, transporting, choice of transport contractors, insurance or choice of insurers will be executed at the sole risk of the person acquiring such services and the Auctioneer will not be held responsible for any losses whether direct or indirect which may be suffered as a result of giving affect to the instructions by the Auctioneer. The Auctioneer however does accept responsibility as contemplated in Section 35(2) of the Consumer Protection Act whilst the goods or lots are in the possession of the auctioneer. Any agreement entered into by the Auctioneer with a transport company or insurer is done so in its representative capacity of the seller or buyer. All transport costs or insurance premiums are therefore payable to the Auctioneer in cash except if acceptable alternative arrangements were made with the Auctioneer.
30. Both the seller and the buyer consent to the jurisdiction of the Magistrate's Court as contemplated in Section 45 of Act 32 of 1944 having regard to any action which the Auctioneer may institute against the buyer or seller irrespective of the cause of action. Notwithstanding the aforesaid the Auctioneer will have the sole and absolute discretion to institute action in any High Court with appropriate jurisdiction.
31. Any legal costs that BKB may have or will incur as a result of the non-compliance of the Purchaser and/or Seller in terms of its or their obligations herein, shall be recoverable by BKB, together with collection commissions from the Purchaser and/or Seller on a scale as between attorney and own client.
32. No variation, amendment, novation or addition to these terms and conditions will have the effect of BKB renouncing any of its rights in terms hereof, unless it is reduced to writing and signed by BKB.
33. No relaxation or indulgence by the Auctioneer must be interpreted as a waiver of any of the Auctioneer's rights in terms hereof. Such relaxation or indulgence must also not be interpreted as a novation hereof.
34. Should any condition be unlawful or become retrospectively unlawful, that unlawful condition shall be deemed to be amended to the extent and in the manner as is necessary to make it lawful or should such amendment be impossible, the unlawful conditions shall be deemed devisable from the remainder of the conditions and pro non scripto.
35. The cattle scale despite being calibrated, is not verified in term of the Legal Metrology Act.
36. The weight as displayed for each lot is an unverified indication of average weight and may not be relied on for purposes of entering a bid.
37. All sales of livestock are sales per head of cattle and not per kilogram
38. Rules of auctions and term and conditions in other languages can be asked for.

BKVB



Thank you for your support.

SERVICE EXCELLENCE



At BKB we value the importance of trust. Trusting that the rains will return and that the land will produce for those who nurture it. Knowing that trust cannot be bought, but rather earned over time through our actions and our commitment to you, through the good times and bad. We take pride in the relationships we have built with generations of clients, each underpinned by integrity and bound through a look in the eye and the shake of a hand.

— INTEGRITY —

SERVICE EXCELLENCE | ENTREPRENEURSHIP | EARNINGS | EMPLOYEES | ENVIRONMENT

— www.bkb.co.za —

BKB

The Trusted Home of Agriculture

To scan, download
a free QR Code app

