

# FARM IMPLEMENT DIGITAL AUCTION

HOME & HECTARE  
REAL ESTATE  
At Home with Trust.

**BKB**  
The Trusted Home of Agriculture  
Die Betroubare Tuiste van Landbou

*Digital Auction Catalogue*

**Date: Friday, 19 May 2023**  
Auction starts at **11:00**

**Auctioneer:** Renier Zietsman

**BKB South Costal Manager:** Jan Erasmus

**Marketer:** Marinus Meyer

**Marketer:** Jaco Zietsman

**Enquiries:** Pieter Ferreira

**Contact:** 082 491 5182

**Contact:** 082 924 6096

**Contact:** 082 542 7446

**Contact:** 082 373 7889

**Contact:** 082 491 8554



REGISTER TO BID

VIEW AUCTION  
AS GUEST

Please **call** or **WhatsApp** the following number if you require **technical support** on the **Digital Auction Platform**:

**+27 (0)82 957 8827**



The Trusted Home of Agriculture  
Die Betroubare Tuiste van Landbou

### EXECUTIVE CATALOGUE SUMMARY

<u>Lot Nr.</u>	<u>Asset Type</u>	<u>Year</u>	<u>Manufacturer</u>	<u>Model</u>	<u>Buyer No</u>	<u>Price</u>
Lot 1	Tractors	2013	Landini	Landini 5-110H Tractor		
Lot 2	Tractor	2018	Landini	Landini Solis 75 tractor with detachables		
Lot 3	Tractor		Ford	Ford 6610 tractor		
Lot 4	Other Agri Equipment		Hyster	Hyster 2.50 forklifter		
Lot 4A	Transportation		Toyota	Toyota Dyna Truck		
Lot 5	Trailer		Home Build	Flatbed Trailor		
Lot 6	Trailer		Home Build	Flatbed Trailor		
Lot 7	Seeding and Tillage Equipment		Home Build	Disc (20 discs)		
Lot 8	Seeding and Tillage Equipment		BPI	BPI Fertilizer Spreader		
Lot 8A	Seeding and Tillage Equipment					
Lot 9	Hay & Forage Equipment		Welger	Welger Baler RP200		
Lot 10	Hay & Forage Equipment		Strautmann	Strautmann Verti-mixer 500		
Lot 11	Hay & Forage Equipment		Home Build 3.9m	Auger		
Lot 12	Other Agri Equipment		Home Build on Wheels	Hidrolic chain bagging unit		
Lot 13	Seeding and Tillage Equipment			Weedsprayer		
Lot 14	Other Agri Equipment			Mobile coldroom		
Lot 15	Seeding and Tillage Equipment			Chisel Plough		
Lot 16	Seeding and Tillage Equipment			Ripper		
Lot 17	Hay & Forage Equipment			Hayrake		
Lot 18	Tractor		Landini	Landini 7860 tractor		
Lot 19	Tractor		Landini	Landini 7830 tractor		
Lot 20	Tractor		DF	DF 504G3 tractor		
Lot 21	Truck	2014	UD Trucks	UD 100 Truck		

Please note: More listings to be expected.

Lot Nr.

1

Date

19 May 2023

**Detail Information**

Location	
Year	2013
Manufacturer	Landini
Model	Landini 5-110H Tractor
Asset Type	Tractors
Serial Number or VIN	
Condition	4 - Good
Hours	4970
Km's	

Comes with	
Notes	

**Operator Station**

Cab Type	Open Cabin
Transmission Detail: Speed	
Transmission Detail: Shift Type	
Differential Lock	
Notes	

**Engine**

Fuel Type	Diesel
Manufacturer	
Model	
Notes	

**Rear Options**

Hitch Type	
PTO	Yes
Hydraulic Outlets	
Notes	

**Body Details**

Size	
Type	
Notes	

**Drive Train**

Notes	
-------	--

**Weights**

Front Wheel Weights	Yes
Back Wheel Weights	
Front Nose Weights	
Notes	

**Undercarriage/Suspension**

Tyre Manufacturer	
Front Tyre Size	
Rear Tyre Size	
Notes	

**Accessories**

Other	
Extensions	

**Functionality Tests**

Start	YES
Drives Forward	YES
Drives Backwards	YES
Brake Pedal Functions	YES

Functional Test Notes

**Supporting Documents**

Certificate of Registration	
Vehicle Licence Certificate	
Service Record	YES
Other	



**General**

The Detailed Equipment Information is limited in scope, and BKB Auctioneers has not inspected any aspects or components of the equipment other than those expressly set forth herein. Unless expressly stated, we make no representations or warranties, express or implied, concerning the equipment or its components, including without limitation any representations or warranties concerning functionality, conformity or compliance with any safety standard or requirement of any applicable authority or regulatory body, fitness for any particular purpose, or merchantability. You are strongly advised to perform your own detailed inspection of the equipment prior to

**Functions**

The Equipment is not tested under load or operated in all available gears. We make no representation or warranty that equipment is operating in accordance with manufacturers' specifications. No inspection has been performed with respect to any functionality aspect other than those expressly included herein. Only select photos have been provided for individual undercarriage components, and may not be indicative of the condition of the entire undercarriage as a whole.

**Dimensions**

Measurements are given as an estimate only. Actual loaded dimensions may vary based on truck/trailer height and the loaded machine configuration/position. It is the buyer's responsibility to measure all loads before leaving our auction site to ensure the load is safe for transport. All measurements should be verified by the buyer. DO NOT rely on these measurements for transportation purposes.

Lot Nr.

2

Date

19 May 2023

**Detail Information**

Location	
Year	2018
Manufacturer	Landini
Model	Landini Solis 75 tractor with detachables
Asset Type	Tractor
Serial Number or VIN	
Condition	5 - Very Good
Hours	430
Km's	

Comes with Notes	Detachable Sigma 4 Backhoe and Detachable
------------------	---

**Operator Station**

Cab Type	Open Cabin
Transmission Detail: Speed	
Transmission Detail: Shift Type	
Differential Lock	
Notes	

**Engine**

Fuel Type	Diesel
Manufacturer	
Model	
Notes	

**Rear Options**

Hitch Type	
PTO	Yes
Hydraulic Outlets	Yes
Notes	

**Body Details**

Size	
Type	
Notes	

**Drive Train**

Notes	
-------	--

**Weights**

Front Wheel Weights	
Back Wheel Weights	
Front Nose Weights	
Notes	

**Undercarriage/Suspension**

Tyre Manufacturer	
Front Tyre Size	
Rear Tyre Size	
Notes	

**Accessories**

Other Extensions	
------------------	--

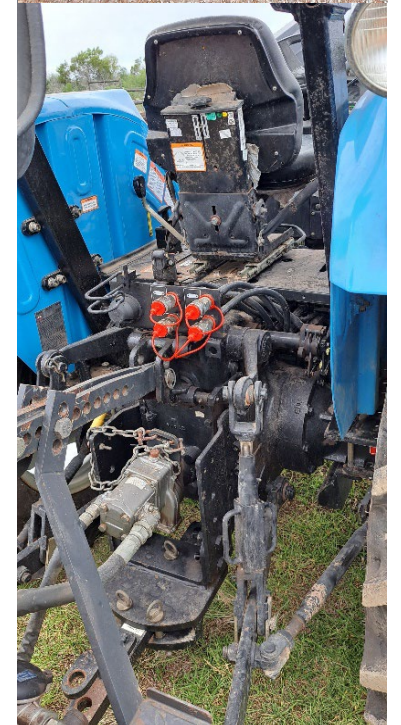
**Functionality Tests**

Start	YES
Drives Forward	YES
Drives Backwards	YES
Brake Pedal Functions	YES

Functional Test Notes

**Supporting Documents**

Certificate of Registration	
Vehicle Licence Certificate	
Service Record	
Other	



**General**

The Detailed Equipment Information is limited in scope, and BKB Auctioneers has not inspected any aspects or components of the equipment other than those expressly set forth herein. Unless expressly stated, we make no representations or warranties, express or implied, concerning the equipment or its components, including without limitation any representations or warranties concerning functionality, conformity or compliance with any safety standard or requirement of any applicable authority or regulatory body, fitness for any particular purpose, or merchantability. You are strongly advised to perform your own detailed inspection of the equipment prior to

**Functions**

The Equipment is not tested under load or operated in all available gears. We make no representation or warranty that equipment is operating in accordance with manufacturers' specifications. No inspection has been performed with respect to any functionality aspect other than those expressly included herein. Only select photos have been provided for individual undercarriage components, and may not be indicative of the condition of the entire undercarriage as a whole.

**Dimensions**

Measurements are given as an estimate only. Actual loaded dimensions may vary based on truck/trailer height and the loaded machine configuration/position. It is the buyer's responsibility to measure all loads before leaving our auction site to ensure the load is safe for transport. All measurements should be verified by the buyer. DO NOT rely on these measurements for transportation purposes.

Lot Nr.

3

Date

19 May 2023

**Detail Information**

Location	
Year	
Manufacturer	<b>Ford</b>
Model	<b>Ford 6610 tractor</b>
Asset Type	<b>Tractor</b>
Serial Number or VIN	
Condition	<b>4 - Good</b>
Hours	<b>490</b>
Km's	

Comes with	<b>"Stootlem"</b>
Notes	

**Operator Station**

Cab Type	<b>Open Cabin</b>
Transmission Detail: Speed	
Transmission Detail: Shift Type	<b>Manual</b>
Differential Lock	
Notes	

**Engine**

Fuel Type	<b>Diesel</b>
Manufacturer	
Model	
Notes	

**Rear Options**

Hitch Type	
PTO	<b>Yes</b>
Hydraulic Outlets	<b>Yes</b>
Notes	

**Body Details**

Size	
Type	
Notes	

**Drive Train**

Notes	
-------	--

**Weights**

Front Wheel Weights	
Back Wheel Weights	
Front Nose Weights	
Notes	

**Undercarriage/Suspension**

Tyre Manufacturer	
Front Tyre Size	
Rear Tyre Size	
Notes	

**Accessories**

Other	
Extensions	

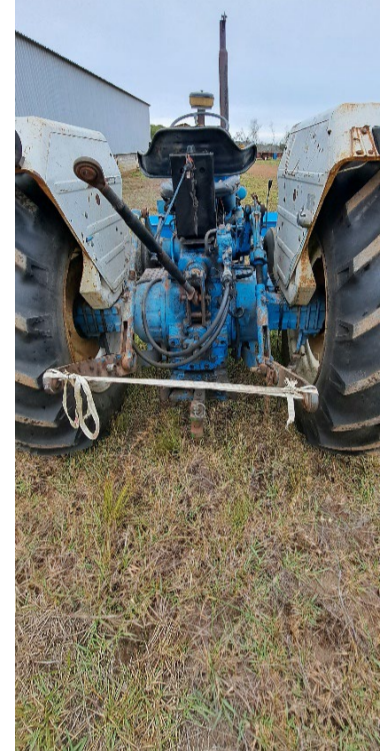
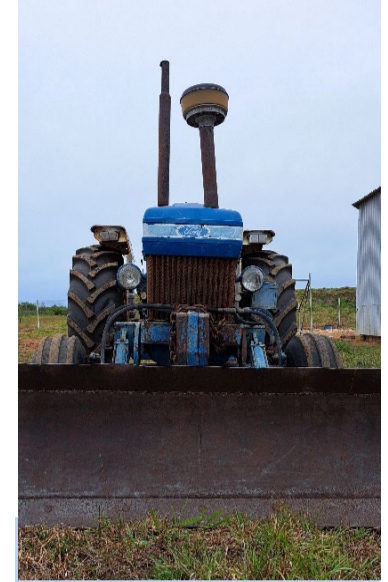
**Functionality Tests**

Start	<b>YES</b>
Drives Forward	<b>YES</b>
Drives Backwards	<b>YES</b>
Brake Pedal Functions	<b>YES</b>

Functional Test Notes

**Supporting Documents**

Certificate of Registration	
Vehicle Licence Certificate	
Service Record	
Other	



**General**

The Detailed Equipment Information is limited in scope, and BKB Auctioneers has not inspected any aspects or components of the equipment other than those expressly set forth herein. Unless expressly stated, we make no representations or warranties, express or implied, concerning the equipment or its components, including without limitation any representations or warranties concerning functionality, conformity or compliance with any safety standard or requirement of any applicable authority or regulatory body, fitness for any particular purpose, or merchantability. You are strongly advised to perform your own detailed inspection of

**Functions**

The Equipment is not tested under load or operated in all available gears. We make no representation or warranty that equipment is operating in accordance with manufacturers' specifications. No inspection has been performed with respect to any functionality aspect other than those expressly included herein. Only select photos have been provided for individual undercarriage components, and may not be indicative of the condition of the entire undercarriage as a whole.

**Dimensions**

Measurements are given as an estimate only. Actual loaded dimensions may vary based on truck/trailer height and the loaded machine configuration/position. It is the buyer's responsibility to measure all loads before leaving our auction site to ensure the load is safe for transport. All measurements should be verified by the buyer. DO NOT rely on these measurements for transportation purposes.

Lot Nr.

4

Date

19 May 2023

**Detail Information**

Location	
Year	
Manufacturer	<b>Hyster</b>
Model	<b>Hyster 2.50 forklifter</b>
Asset Type	<b>Other Agri Equipment</b>
Serial Number or VIN	
Condition	<b>4 - Good</b>
Hours	
Km's	
Comes with	
Notes	

**Operator Station**

Cab Type	<b>Open</b>
Transmission Detail: Speed	
Transmission Detail: Shift Type	<b>Manual</b>
Differential Lock	
Notes	

**Engine**

Fuel Type	<b>Diesel</b>
Manufacturer	
Model	
Notes	

**Rear Options**

Hitch Type	
PTO	
Hydraulic Outlets	
Notes	

**Body Details**

Size	
Type	
Notes	

**Drive Train**

Notes	
-------	--

**Weights**

Front Wheel Weights	
Back Wheel Weights	
Front Nose Weights	
Notes	

**Undercarriage/Suspension**

Tyre Manufacturer	
Front Tyre Size	
Rear Tyre Size	
Notes	

**Accessories**

Other	
Extensions	

**Functionality Tests**

Start	<b>YES</b>
Drives Forward	<b>YES</b>
Drives Backwards	<b>YES</b>
Brake Pedal Functions	<b>YES</b>

Functional Test Notes

--

**Supporting Documents**

Certificate of Registration	
Vehicle Licence Certificate	
Service Record	
Other	



**General**

The Detailed Equipment Information is limited in scope, and BKB Auctioneers has not inspected any aspects or components of the equipment other than those expressly set forth herein. Unless expressly stated, we make no representations or warranties, express or implied, concerning the equipment or its components, including without limitation any representations or warranties concerning functionality, conformity or compliance with any safety standard or requirement of any applicable authority or regulatory body, fitness for any particular purpose, or merchantability. You are strongly advised to perform your own detailed inspection of

**Functions**

The equipment is not tested under load or operated in all available gears. We make no representation or warranty that equipment is operating in accordance with manufacturers' specifications. No inspection has been performed with respect to any functionality aspect other than those expressly included herein. Only select photos have been provided for individual undercarriage components, and may not be indicative of the condition of the entire undercarriage as a whole.

**Dimensions**

Measurements are given as an estimate only. Actual loaded dimensions may vary based on truck/trailer height and the loaded machine configuration/position. It is the buyer's responsibility to measure all loads before leaving our auction site to ensure the load is safe for transport. All measurements should be verified by the buyer. DO NOT rely on these measurements for transportation purposes.

Lot Nr.

4A

Date

19 May 2023

**Detail Information**

Location	
Year	
Manufacturer	<b>Toyota</b>
Model	<b>Toyota Dyna Truck</b>
Asset Type	<b>Transportation</b>
Serial Number or VIN	
Condition	<b>4 - Good</b>
Hours	
Km's	<b>29238</b>
Comes with	
Notes	

**Operator Station**

Cab Type	
Transmission Detail: Speed	
Transmission Detail: Shift Type	<b>Manual</b>
Differential Lock	
Notes	

**Engine**

Fuel Type	
Manufacturer	
Model	
Notes	

**Rear Options**

Hitch Type	
PTO	
Hydraulic Outlets	
Notes	

**Body Details**

Size	
Type	
Notes	

**Drive Train**

Notes	
-------	--

**Weights**

Front Wheel Weights	
Back Wheel Weights	
Front Nose Weights	
Notes	

**Undercarriage/Suspension**

Tyre Manufacturer	
Front Tyre Size	
Rear Tyre Size	
Notes	

**Accessories**

Other	
Extensions	

**Functionality Tests**

Start	<b>YES</b>
Drives Forward	<b>YES</b>
Drives Backwards	<b>YES</b>
Brake Pedal Functions	<b>YES</b>

Functional Test Notes

**General**

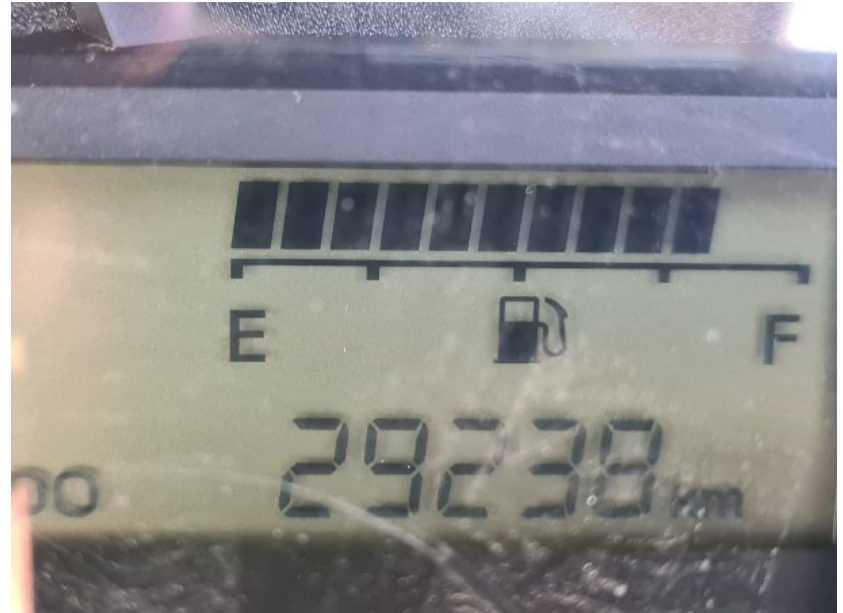
The Detailed Equipment Information is limited in scope, and BKB Auctioneers has not inspected any aspects or components of the equipment other than those expressly set forth herein. Unless expressly stated, we make no representations or warranties, express or implied, concerning the equipment or its components, including without limitation any representations or warranties concerning functionality, conformity or compliance with any safety standard or requirement of any applicable authority or regulatory body, fitness for any particular purpose, or merchantability. You are strongly advised to perform your own detailed inspection of the equipment prior to

**Functions**

The Equipment is not tested under load or operated in all available gears. We make no representation or warranty that equipment is operating in accordance with manufacturers' specifications. No inspection has been performed with respect to any functionality aspect other than those expressly included herein. Only select photos have been provided for individual undercarriage components, and may not be indicative of the condition of the entire undercarriage as a whole.

**Dimensions**

Measurements are given as an estimate only. Actual loaded dimensions may vary based on truck/trailer height and the loaded machine configuration/position. It is the buyer's responsibility to measure all loads before leaving our auction site to ensure the load is safe for transport. All measurements should be verified by the buyer. DO NOT rely on these measurements for transportation purposes.



**Supporting Documents**

Certificate of Registration	
Vehicle Licence Certificate	
Service Record	<b>YES</b>
Other	

Lot Nr.

5

Date

19 May 2023

**Detail Information**

Location	
Year	
Manufacturer	Home Build
Model	Flatbed Trailer
Asset Type	Trailer
Serial Number or VIN	
Condition	2 - Poor
Hours	
Km's	

Comes with	
Notes	

**Operator Station**

Cab Type	
Transmission Detail: Speed	
Transmission Detail: Shift Type	
Differential Lock	
Notes	

**Engine**

Fuel Type	
Manufacturer	
Model	
Notes	

**Rear Options**

Hitch Type	
PTO	
Hydraulic Outlets	
Notes	

**Body Details**

Size	
Type	
Notes	

**Drive Train**

Notes	
-------	--

**Weights**

Front Wheel Weights	
Back Wheel Weights	
Front Nose Weights	
Notes	

**Undercarriage/Suspension**

Tyre Manufacturer	
Front Tyre Size	
Rear Tyre Size	
Notes	

**Accessories**

Other	
Extensions	

**Functionality Tests**

Start	
Drives Forward	
Drives Backwards	
Brake Pedal Functions	

Functional Test Notes	
-----------------------	--

**Supporting Documents**

Certificate of Registration	
Vehicle Licence Certificate	
Service Record	
Other	



**General**

The Detailed Equipment Information is limited in scope, and BKB Auctioneers has not inspected any aspects or components of the equipment other than those expressly set forth herein. Unless expressly stated, we make no representations or warranties, express or implied, concerning the equipment or its components, including without limitation any representations or warranties concerning functionality, conformity or compliance with any safety standard or requirement of any applicable authority or regulatory body, fitness for any particular purpose, or merchantability. You are strongly advised to perform your own detailed inspection of the equipment prior to

**Functions**

The Equipment is not tested under load or operated in all available gears. We make no representation or warranty that equipment is operating in accordance with manufacturers' specifications. No inspection has been performed with respect to any functionality aspect other than those expressly included herein. Only select photos have been provided for individual undercarriage components, and may not be indicative of the condition of the entire undercarriage as a whole.

**Dimensions**

Measurements are given as an estimate only. Actual loaded dimensions may vary based on truck/trailer height and the loaded machine configuration/position. It is the buyer's responsibility to measure all loads before leaving our auction site to ensure the load is safe for transport. All measurements should be verified by the buyer. DO NOT rely on these measurements for transportation purposes.



Lot Nr.

6

Date

19 May 2023

**Detail Information**

Location	
Year	
Manufacturer	<b>Home Build</b>
Model	<b>Flatbed Trailor</b>
Asset Type	<b>Trailer</b>
Serial Number or VIN	
Condition	<b>4 - Good</b>
Hours	
Km's	
Comes with	<b>Hidrolic Tipper</b>
Notes	

**Operator Station**

Cab Type	
Transmission Detail: Speed	
Transmission Detail: Shift Type	
Differential Lock	
Notes	

**Engine**

Fuel Type	
Manufacturer	
Model	
Notes	

**Rear Options**

Hitch Type	
PTO	
Hydraulic Outlets	
Notes	

**Body Details**

Size	
Type	
Notes	

**Drive Train**

Notes	
-------	--

**Weights**

Front Wheel Weights	
Back Wheel Weights	
Front Nose Weights	
Notes	

**Undercarriage/Suspension**

Tyre Manufacturer	
Front Tyre Size	
Rear Tyre Size	
Notes	

**Accessories**

Other	
Extensions	

**Functionality Tests**

Start	
Drives Forward	
Drives Backwards	
Brake Pedal Functions	

Functional Test Notes	
-----------------------	--

**Supporting Documents**

Certificate of Registration	
Vehicle Licence Certificate	
Service Record	
Other	



**General**

The Detailed Equipment Information is limited in scope, and BKB Auctioneers has not inspected any aspects or components of the equipment other than those expressly set forth herein. Unless expressly stated, we make no representations or warranties, express or implied, concerning the equipment or its components, including without limitation any representations or warranties concerning functionality, conformity or compliance with any safety standard or requirement of any applicable authority or regulatory body, fitness for any particular purpose, or merchantability. You are strongly advised to perform your own detailed inspection of the equipment prior to

**Functions**

The Equipment is not tested under load or operated in all available gears. We make no representation or warranty that equipment is operating in accordance with manufacturers' specifications. No inspection has been performed with respect to any functionality aspect other than those expressly included herein. Only select photos have been provided for individual undercarriage components, and may not be indicative of the condition of the entire undercarriage as a whole.

**Dimensions**

Measurements are given as an estimate only. Actual loaded dimensions may vary based on truck/trailer height and the loaded machine configuration/position. It is the buyer's responsibility to measure all loads before leaving our auction site to ensure the load is safe for transport. All measurements should be verified by the buyer. DO NOT rely on these measurements for transportation purposes.

Lot Nr.

7

Date

19 May 2023

**Detail Information**

Location	
Year	
Manufacturer	Home Build
Model	Disc (20 discs)
Asset Type	Seeding and Tillage Equipment
Serial Number or VIN	
Condition	5 - Very Good
Hours	
Km's	
Comes with	
Notes	

**Operator Station**

Cab Type	
Transmission Detail: Speed	
Transmission Detail: Shift Type	
Differential Lock	
Notes	

**Engine**

Fuel Type	
Manufacturer	
Model	
Notes	

**Rear Options**

Hitch Type	
PTO	
Hydraulic Outlets	
Notes	

**Body Details**

Size	
Type	
Notes	

**Drive Train**

Notes	
-------	--

**Weights**

Front Wheel Weights	
Back Wheel Weights	
Front Nose Weights	
Notes	

**Undercarriage/Suspension**

Tyre Manufacturer	
Front Tyre Size	
Rear Tyre Size	
Notes	

**Accessories**

Other	
Extensions	

**Functionality Tests**

Start	
Drives Forward	
Drives Backwards	
Brake Pedal Functions	

Functional Test Notes	
-----------------------	--

**Supporting Documents**

Certificate of Registration	
Vehicle Licence Certificate	
Service Record	
Other	



**General**

The Detailed Equipment Information is limited in scope, and BKB Auctioneers has not inspected any aspects or components of the equipment other than those expressly set forth herein. Unless expressly stated, we make no representations or warranties, express or implied, concerning the equipment or its components, including without limitation any representations or warranties concerning functionality, conformity or compliance with any safety standard or requirement of any applicable authority or regulatory body, fitness for any particular purpose, or merchantability. You are strongly advised to perform your own detailed inspection of the equipment prior to

**Functions**

The Equipment is not tested under load or operated in all available gears. We make no representation or warranty that equipment is operating in accordance with manufacturers' specifications. No inspection has been performed with respect to any functionality aspect other than those expressly included herein. Only select photos have been provided for individual undercarriage components, and may not be indicative of the condition of the entire undercarriage as a whole.

**Dimensions**

Measurements are given as an estimate only. Actual loaded dimensions may vary based on truck/trailer height and the loaded machine configuration/position. It is the buyer's responsibility to measure all loads before leaving our auction site to ensure the load is safe for transport. All measurements should be verified by the buyer. DO NOT rely on these measurements for transportation purposes.

Lot Nr.

8

Date

19 May 2023

**Detail Information**

Location	
Year	
Manufacturer	<b>BPI</b>
Model	<b>BPI Fertilizer Spreader</b>
Asset Type	<b>Seeding and Tillage Equipment</b>
Serial Number or VIN	
Condition	<b>4 - Good</b>
Hours	
Km's	
Comes with	
Notes	

**Operator Station**

Cab Type	
Transmission Detail: Speed	
Transmission Detail: Shift Type	
Differential Lock	
Notes	

**Engine**

Fuel Type	
Manufacturer	
Model	
Notes	

**Rear Options**

Hitch Type	
PTO	
Hydraulic Outlets	
Notes	

**Body Details**

Size	
Type	
Notes	

**Drive Train**

Notes	
-------	--

**Weights**

Front Wheel Weights	
Back Wheel Weights	
Front Nose Weights	
Notes	

**Undercarriage/Suspension**

Tyre Manufacturer	
Front Tyre Size	
Rear Tyre Size	
Notes	

**Accessories**

Other	
Extensions	

**Functionality Tests**

Start	
Drives Forward	
Drives Backwards	
Brake Pedal Functions	

Functional Test Notes	
-----------------------	--

**Supporting Documents**

Certificate of Registration	
Vehicle Licence Certificate	
Service Record	
Other	



**General**

The Detailed Equipment Information is limited in scope, and BKB Auctioneers has not inspected any aspects or components of the equipment other than those expressly set forth herein. Unless expressly stated, we make no representations or warranties, express or implied, concerning the equipment or its components, including without limitation any representations or warranties concerning functionality, conformity or compliance with any safety standard or requirement of any applicable authority or regulatory body, fitness for any particular purpose, or merchantability. You are strongly advised to perform your own detailed inspection of the equipment prior to

**Functions**

The equipment is not tested under load or operated in all available gears. We make no representation or warranty that equipment is operating in accordance with manufacturers' specifications. No inspection has been performed with respect to any functionality aspect other than those expressly included herein. Only select photos have been provided for individual undercarriage components, and may not be indicative of the condition of the entire undercarriage as a whole.

**Dimensions**

Measurements are given as an estimate only. Actual loaded dimensions may vary based on truck/trailer height and the loaded machine configuration/position. It is the buyer's responsibility to measure all loads before leaving our auction site to ensure the load is safe for transport. All measurements should be verified by the buyer. DO NOT rely on these measurements for transportation purposes.

Lot Nr.

8A

Date

19 May 2023

**Detail Information**

Location	
Year	
Manufacturer	Staalland
Model	Staalland Fertilizer Spreader
Asset Type	Seeding and Tillage Equipment
Serial Number or VIN	
Condition	3 - Fair
Hours	
Km's	
Comes with	
Notes	

**Operator Station**

Cab Type	
Transmission Detail: Speed	
Transmission Detail: Shift Type	
Differential Lock	
Notes	

**Engine**

Fuel Type	
Manufacturer	
Model	
Notes	

**Rear Options**

Hitch Type	
PTO	
Hydraulic Outlets	
Notes	

**Body Details**

Size	
Type	
Notes	

**Drive Train**

Notes	
-------	--

**Weights**

Front Wheel Weights	
Back Wheel Weights	
Front Nose Weights	
Notes	

**Undercarriage/Suspension**

Tyre Manufacturer	
Front Tyre Size	
Rear Tyre Size	
Notes	

**Accessories**

Other	
Extensions	

**Functionality Tests**

Start	
Drives Forward	
Drives Backwards	
Brake Pedal Functions	

Functional Test Notes	
-----------------------	--



**Supporting Documents**

Certificate of Registration	
Vehicle Licence Certificate	
Service Record	
Other	

**General**

The Detailed Equipment Information is limited in scope, and BKB Auctioneers has not inspected any aspects or components of the equipment other than those expressly set forth herein. Unless expressly stated, we make no representations or warranties, express or implied, concerning the equipment or its components, including without limitation any representations or warranties concerning functionality, conformity or compliance with any safety standard or requirement of any applicable authority or regulatory body, fitness for any particular purpose, or merchantability. You are strongly advised to perform your own detailed inspection of the equipment prior to

**Functions**

The Equipment is not tested under load or operated in all available gears. We make no representation or warranty that equipment is operating in accordance with manufacturers' specifications. No inspection has been performed with respect to any functionality aspect other than those expressly included herein. Only select photos have been provided for individual undercarriage components, and may not be indicative of the condition of the entire undercarriage as a whole.

**Dimensions**

Measurements are given as an estimate only. Actual loaded dimensions may vary based on truck/trailer height and the loaded machine configuration/position. It is the buyer's responsibility to measure all loads before leaving our auction site to ensure the load is safe for transport. All measurements should be verified by the buyer. DO NOT rely on these measurements for transportation purposes.

Lot Nr.

9

Date

19 May 2023

**Detail Information**

Location	
Year	
Manufacturer	<b>Welger</b>
Model	<b>Welger Baler RP200</b>
Asset Type	<b>Hay &amp; Forage Equipment</b>
Serial Number or VIN	
Condition	<b>4 - Good</b>
Hours	
Km's	
Comes with	
Notes	



**Operator Station**

Cab Type	
Transmission Detail: Speed	
Transmission Detail: Shift Type	
Differential Lock	
Notes	

**Engine**

Fuel Type	
Manufacturer	
Model	
Notes	

**Rear Options**

Hitch Type	
PTO	
Hydraulic Outlets	
Notes	

**Body Details**

Size	
Type	
Notes	

**Drive Train**

Notes	
-------	--

**Weights**

Front Wheel Weights	
Back Wheel Weights	
Front Nose Weights	
Notes	

**Undercarriage/Suspension**

Tyre Manufacturer	
Front Tyre Size	
Rear Tyre Size	
Notes	

**Accessories**

Other	
Extensions	

**Functionality Tests**

Start	
Drives Forward	
Drives Backwards	
Brake Pedal Functions	

**Supporting Documents**

Certificate of Registration	
Vehicle Licence Certificate	
Service Record	
Other	

Functional Test Notes	
-----------------------	--

**General**

The Detailed Equipment Information is limited in scope, and BKB Auctioneers has not inspected any aspects or components of the equipment other than those expressly set forth herein. Unless expressly stated, we make no representations or warranties, express or implied, concerning the equipment or its components, including without limitation any representations or warranties concerning functionality, conformity or compliance with any safety standard or requirement of any applicable authority or regulatory body, fitness for any particular purpose, or merchantability. You are strongly advised to perform your own detailed inspection of the equipment prior to

**Functions**

The Equipment is not tested under load or operated in all available gears. We make no representation or warranty that equipment is operating in accordance with manufacturers' specifications. No inspection has been performed with respect to any functionality aspect other than those expressly included herein. Only select photos have been provided for individual undercarriage components, and may not be indicative of the condition of the entire undercarriage as a whole.

**Dimensions**

Measurements are given as an estimate only. Actual loaded dimensions may vary based on truck/trailer height and the loaded machine configuration/position. It is the buyer's responsibility to measure all loads before leaving our auction site to ensure the load is safe for transport. All measurements should be verified by the buyer. DO NOT rely on these measurements for transportation purposes.

Lot Nr.

10

Date

19 May 2023

**Detail Information**

Location	
Year	
Manufacturer	<b>Strautmann</b>
Model	<b>Strautmann Verti-mixer 500</b>
Asset Type	<b>Hay &amp; Forage Equipment</b>
Serial Number or VIN	
Condition	<b>5 - Very Good</b>
Hours	
Km's	
Comes with	
Notes	



**Operator Station**

Cab Type	
Transmission Detail: Speed	
Transmission Detail: Shift Type	
Differential Lock	
Notes	



**Engine**

Fuel Type	
Manufacturer	
Model	
Notes	



**Rear Options**

Hitch Type	
PTO	
Hydraulic Outlets	
Notes	



**Body Details**

Size	
Type	
Notes	

**Drive Train**

Notes	
-------	--

**Weights**

Front Wheel Weights	
Back Wheel Weights	
Front Nose Weights	
Notes	

**Undercarriage/Suspension**

Tyre Manufacturer	
Front Tyre Size	
Rear Tyre Size	
Notes	

**Accessories**

Other	
Extensions	

**Functionality Tests**

Start	
Drives Forward	
Drives Backwards	
Brake Pedal Functions	

**Supporting Documents**

Certificate of Registration	
Vehicle Licence Certificate	
Service Record	
Other	

Functional Test Notes	
-----------------------	--

**General**

The Detailed Equipment Information is limited in scope, and BKB Auctioneers has not inspected any aspects or components of the equipment other than those expressly set forth herein. Unless expressly stated, we make no representations or warranties, express or implied, concerning the equipment or its components, including without limitation any representations or warranties concerning functionality, conformity or compliance with any safety standard or requirement of any applicable authority or regulatory body, fitness for any particular purpose, or merchantability. You are strongly advised to perform your own detailed inspection of the equipment prior to

**Functions**

The Equipment is not tested under load or operated in all available gears. We make no representation or warranty that equipment is operating in accordance with manufacturers' specifications. No inspection has been performed with respect to any functionality aspect other than those expressly included herein. Only select photos have been provided for individual undercarriage components, and may not be indicative of the condition of the entire undercarriage as a whole.

**Dimensions**

Measurements are given as an estimate only. Actual loaded dimensions may vary based on truck/trailer height and the loaded machine configuration/position. It is the buyer's responsibility to measure all loads before leaving our auction site to ensure the load is safe for transport. All measurements should be verified by the buyer. DO NOT rely on these measurements for transportation purposes.

Lot Nr.

11

Date

19 May 2023

**Detail Information**

Location	
Year	
Manufacturer	Home Build 3.9m
Model	Auger
Asset Type	Hay & Forage Equipment
Serial Number or VIN	
Condition	5 - Very Good
Hours	
Km's	

Comes with	
Notes	

**Operator Station**

Cab Type	
Transmission Detail: Speed	
Transmission Detail: Shift Type	
Differential Lock	
Notes	

**Engine**

Fuel Type	
Manufacturer	
Model	
Notes	

**Rear Options**

Hitch Type	
PTO	
Hydraulic Outlets	
Notes	

**Body Details**

Size	
Type	
Notes	

**Drive Train**

Notes	
-------	--

**Weights**

Front Wheel Weights	
Back Wheel Weights	
Front Nose Weights	
Notes	

**Undercarriage/Suspension**

Tyre Manufacturer	
Front Tyre Size	
Rear Tyre Size	
Notes	

**Accessories**

Other	
Extensions	

**Functionality Tests**

Start	
Drives Forward	
Drives Backwards	
Brake Pedal Functions	

Functional Test Notes

**General**

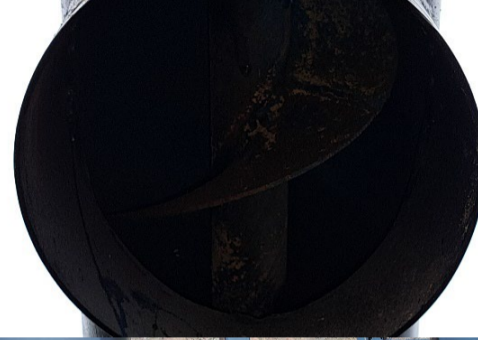
The Detailed Equipment Information is limited in scope, and BKB Auctioneers has not inspected any aspects or components of the equipment other than those expressly set forth herein. Unless expressly stated, we make no representations or warranties, express or implied, concerning the equipment or its components, including without limitation any representations or warranties concerning functionality, conformity or compliance with any safety standard or requirement of any applicable authority or regulatory body, fitness for any particular purpose, or merchantability. You are strongly advised to perform your own detailed inspection of the equipment prior to

**Functions**

The Equipment is not tested under load or operated in all available gears. We make no representation or warranty that equipment is operating in accordance with manufacturers' specifications. No inspection has been performed with respect to any functionality aspect other than those expressly included herein. Only select photos have been provided for individual undercarriage components, and may not be indicative of the condition of the entire undercarriage as a whole.

**Dimensions**

Measurements are given as an estimate only. Actual loaded dimensions may vary based on truck/trailer height and the loaded machine configuration/position. It is the buyer's responsibility to measure all loads before leaving our auction site to ensure the load is safe for transport. All measurements should be verified by the buyer. DO NOT rely on these measurements for transportation purposes.



**Supporting Documents**

Certificate of Registration	
Vehicle Licence Certificate	
Service Record	
Other	

Lot Nr.

12

Date

19 May 2023

**Detail Information**

Location	
Year	
Manufacturer	Home Build on Wheels
Model	Hidrolic chain bagging unit
Asset Type	Other Agri Equipment
Serial Number or VIN	
Condition	5 - Very Good
Hours	
Km's	
Comes with	
Notes	



**Operator Station**

Cab Type	
Transmission Detail: Speed	
Transmission Detail: Shift Type	
Differential Lock	
Notes	

**Engine**

Fuel Type	
Manufacturer	
Model	
Notes	

**Rear Options**

Hitch Type	
PTO	
Hydraulic Outlets	
Notes	

**Body Details**

Size	
Type	
Notes	

**Drive Train**

Notes	
-------	--

**Weights**

Front Wheel Weights	
Back Wheel Weights	
Front Nose Weights	
Notes	

**Undercarriage/Suspension**

Tyre Manufacturer	
Front Tyre Size	
Rear Tyre Size	
Notes	

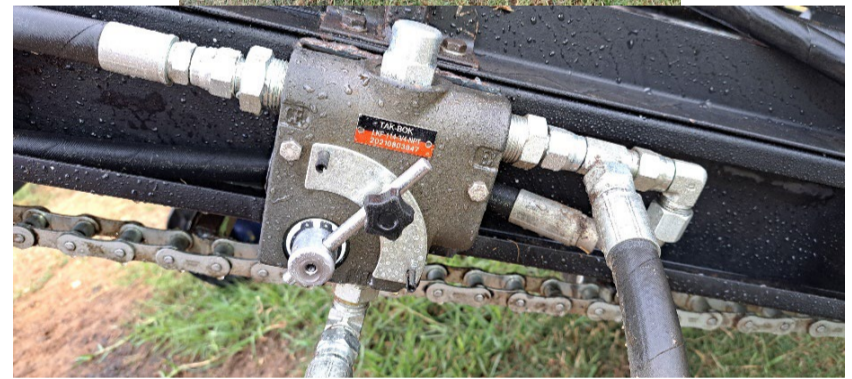
**Accessories**

Other	
Extensions	

**Functionality Tests**

Start	
Drives Forward	
Drives Backwards	
Brake Pedal Functions	

Functional Test Notes	
-----------------------	--



**Supporting Documents**

Certificate of Registration	
Vehicle Licence Certificate	
Service Record	
Other	

**General**

The Detailed Equipment Information is limited in scope, and BKB Auctioneers has not inspected any aspects or components of the equipment other than those expressly set forth herein. Unless expressly stated, we make no representations or warranties, express or implied, concerning the equipment or its components, including without limitation any representations or warranties concerning functionality, conformity or compliance with any safety standard or requirement of any applicable authority or regulatory body, fitness for any particular purpose, or merchantability. You are strongly advised to perform your own detailed inspection of the equipment prior to

**Functions**

The equipment is not tested under load or operated in all available gears. We make no representation or warranty that equipment is operating in accordance with manufacturers' specifications. No inspection has been performed with respect to any functionality aspect other than those expressly included herein. Only select photos have been provided for individual undercarriage components, and may not be indicative of the condition of the entire undercarriage as a whole.

**Dimensions**

Measurements are given as an estimate only. Actual loaded dimensions may vary based on truck/trailer height and the loaded machine configuration/position. It is the buyer's responsibility to measure all loads before leaving our auction site to ensure the load is safe for transport. All measurements should be verified by the buyer. DO NOT rely on these measurements for transportation purposes.



Lot Nr.

13

Date

19 May 2023

**Detail Information**

Location	
Year	
Manufacturer	
Model	<b>Weedsprayer</b>
Asset Type	<b>Seeding and Tillage Equipment</b>
Serial Number or VIN	
Condition	<b>5 - Very Good</b>
Hours	
Km's	
Comes with	
Notes	

**Operator Station**

Cab Type	
Transmission Detail: Speed	
Transmission Detail: Shift Type	
Differential Lock	
Notes	

**Engine**

Fuel Type	
Manufacturer	
Model	
Notes	

**Rear Options**

Hitch Type	
PTO	
Hydraulic Outlets	
Notes	

**Body Details**

Size	
Type	
Notes	

**Drive Train**

Notes	
-------	--

**Weights**

Front Wheel Weights	
Back Wheel Weights	
Front Nose Weights	
Notes	

**Undercarriage/Suspension**

Tyre Manufacturer	
Front Tyre Size	
Rear Tyre Size	
Notes	

**Accessories**

Other	
Extensions	

**Functionality Tests**

Start	
Drives Forward	
Drives Backwards	
Brake Pedal Functions	

Functional Test Notes	
-----------------------	--

**Supporting Documents**

Certificate of Registration	
Vehicle Licence Certificate	
Service Record	
Other	



**General**

The Detailed Equipment Information is limited in scope, and BKB Auctioneers has not inspected any aspects or components of the equipment other than those expressly set forth herein. Unless expressly stated, we make no representations or warranties, express or implied, concerning the equipment or its components, including without limitation any representations or warranties concerning functionality, conformity or compliance with any safety standard or requirement of any applicable authority or regulatory body, fitness for any particular purpose, or merchantability. You are strongly advised to perform your own detailed inspection of the equipment prior to

**Functions**

The Equipment is not tested under load or operated in all available gears. We make no representation or warranty that equipment is operating in accordance with manufacturers' specifications. No inspection has been performed with respect to any functionality aspect other than those expressly included herein. Only select photos have been provided for individual undercarriage components, and may not be indicative of the condition of the entire undercarriage as a whole.

**Dimensions**

Measurements are given as an estimate only. Actual loaded dimensions may vary based on truck/trailer height and the loaded machine configuration/position. It is the buyer's responsibility to measure all loads before leaving our auction site to ensure the load is safe for transport. All measurements should be verified by the buyer. DO NOT rely on these measurements for transportation purposes.

Lot Nr.

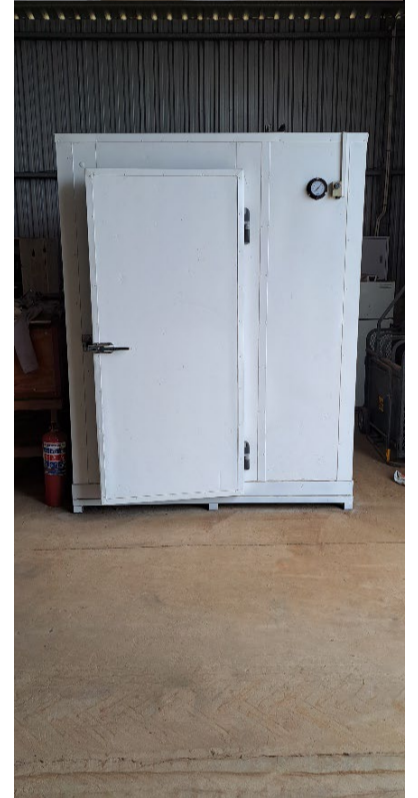
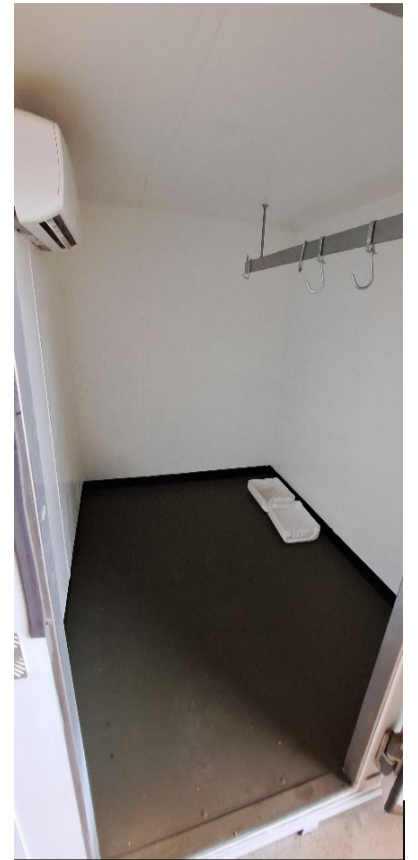
14

Date

19 May 2023

**Detail Information**

Location	
Year	
Manufacturer	
Model	Mobile coldroom
Asset Type	Other Agri Equipment
Serial Number or VIN	
Condition	5 - Very Good
Hours	
Km's	
Comes with	
Notes	Dimensions-2.43 x 1.9 x 2.45 m



**Operator Station**

Cab Type	
Transmission Detail: Speed	
Transmission Detail: Shift Type	
Differential Lock	
Notes	

**Engine**

Fuel Type	
Manufacturer	
Model	
Notes	

**Rear Options**

Hitch Type	
PTO	
Hydraulic Outlets	
Notes	

**Body Details**

Size	
Type	
Notes	

**Drive Train**

Notes	
-------	--

**Weights**

Front Wheel Weights	
Back Wheel Weights	
Front Nose Weights	
Notes	

**Undercarriage/Suspension**

Tyre Manufacturer	
Front Tyre Size	
Rear Tyre Size	
Notes	

**Accessories**

Other	
Extensions	

**Functionality Tests**

Start	
Drives Forward	
Drives Backwards	
Brake Pedal Functions	

**Supporting Documents**

Certificate of Registration	
Vehicle Licence Certificate	
Service Record	
Other	

Functional Test Notes	
-----------------------	--

**General**

The Detailed Equipment Information is limited in scope, and BKB Auctioneers has not inspected any aspects or components of the equipment other than those expressly set forth herein. Unless expressly stated, we make no representations or warranties, express or implied, concerning the equipment or its components, including without limitation any representations or warranties concerning functionality, conformity or compliance with any safety standard or requirement of any applicable authority or regulatory body, fitness for any particular purpose, or merchantability. You are strongly advised to perform your own detailed inspection of the equipment prior to

**Functions**

The Equipment is not tested under load or operated in all available gears. We make no representation or warranty that equipment is operating in accordance with manufacturers' specifications. No inspection has been performed with respect to any functionality aspect other than those expressly included herein. Only select photos have been provided for individual undercarriage components, and may not be indicative of the condition of the entire undercarriage as a whole.

**Dimensions**

Measurements are given as an estimate only. Actual loaded dimensions may vary based on truck/trailer height and the loaded machine configuration/position. It is the buyer's responsibility to measure all loads before leaving our auction site to ensure the load is safe for transport. All measurements should be verified by the buyer. DO NOT rely on these measurements for transportation purposes.

Lot Nr.

15

Date

19 May 2023

**Detail Information**

Location	
Year	
Manufacturer	
Model	Chisel Plough
Asset Type	Seeding and Tillage Equipment
Serial Number or VIN	
Condition	5 - Very Good
Hours	
Km's	
Comes with	
Notes	Chisel Plough (7 tine)



**Operator Station**

Cab Type	
Transmission Detail: Speed	
Transmission Detail: Shift Type	
Differential Lock	
Notes	

**Engine**

Fuel Type	
Manufacturer	
Model	
Notes	

**Rear Options**

Hitch Type	
PTO	
Hydraulic Outlets	
Notes	

**Body Details**

Size	
Type	
Notes	

**Drive Train**

Notes	
-------	--

**Weights**

Front Wheel Weights	
Back Wheel Weights	
Front Nose Weights	
Notes	

**Undercarriage/Suspension**

Tyre Manufacturer	
Front Tyre Size	
Rear Tyre Size	
Notes	

**Accessories**

Other	
Extensions	

**Functionality Tests**

Start	
Drives Forward	
Drives Backwards	
Brake Pedal Functions	

**Supporting Documents**

Certificate of Registration	
Vehicle Licence Certificate	
Service Record	
Other	

Functional Test Notes	
-----------------------	--

**General**

The Detailed Equipment Information is limited in scope, and BKB Auctioneers has not inspected any aspects or components of the equipment other than those expressly set forth herein. Unless expressly stated, we make no representations or warranties, express or implied, concerning the equipment or its components, including without limitation any representations or warranties concerning functionality, conformity or compliance with any safety standard or requirement of any applicable authority or regulatory body, fitness for any particular purpose, or merchantability. You are strongly advised to perform your own detailed inspection of the equipment prior to

**Functions**

The Equipment is not tested under load or operated in all available gears. We make no representation or warranty that equipment is operating in accordance with manufacturers' specifications. No inspection has been performed with respect to any functionality aspect other than those expressly included herein. Only select photos have been provided for individual undercarriage components, and may not be indicative of the condition of the entire undercarriage as a whole.

**Dimensions**

Measurements are given as an estimate only. Actual loaded dimensions may vary based on truck/trailer height and the loaded machine configuration/position. It is the buyer's responsibility to measure all loads before leaving our auction site to ensure the load is safe for transport. All measurements should be verified by the buyer. DO NOT rely on these measurements for transportation purposes.

Lot Nr.

16

Date

19 May 2023

**Detail Information**

Location	
Year	
Manufacturer	
Model	<b>Ripper</b>
Asset Type	<b>Seeding and Tillage Equipment</b>
Serial Number or VIN	
Condition	<b>5 - Very Good</b>
Hours	
Km's	
Comes with	
Notes	<b>Ripper (5 tine)</b>

**Operator Station**

Cab Type	
Transmission Detail: Speed	
Transmission Detail: Shift Type	
Differential Lock	
Notes	

**Engine**

Fuel Type	
Manufacturer	
Model	
Notes	

**Rear Options**

Hitch Type	
PTO	
Hydraulic Outlets	
Notes	

**Body Details**

Size	
Type	
Notes	

**Drive Train**

Notes	
-------	--

**Weights**

Front Wheel Weights	
Back Wheel Weights	
Front Nose Weights	
Notes	

**Undercarriage/Suspension**

Tyre Manufacturer	
Front Tyre Size	
Rear Tyre Size	
Notes	

**Accessories**

Other	
Extensions	

**Functionality Tests**

Start	
Drives Forward	
Drives Backwards	
Brake Pedal Functions	

Functional Test Notes	
-----------------------	--



**Supporting Documents**

Certificate of Registration	
Vehicle Licence Certificate	
Service Record	
Other	

**General**

The Detailed Equipment Information is limited in scope, and BKB Auctioneers has not inspected any aspects or components of the equipment other than those expressly set forth herein. Unless expressly stated, we make no representations or warranties, express or implied, concerning the equipment or its components, including without limitation any representations or warranties concerning functionality, conformity or compliance with any safety standard or requirement of any applicable authority or regulatory body, fitness for any particular purpose, or merchantability. You are strongly advised to perform your own detailed inspection of the equipment prior to

**Functions**

The Equipment is not tested under load or operated in all available gears. We make no representation or warranty that equipment is operating in accordance with manufacturers' specifications. No inspection has been performed with respect to any functionality aspect other than those expressly included herein. Only select photos have been provided for individual undercarriage components, and may not be indicative of the condition of the entire undercarriage as a whole.

**Dimensions**

Measurements are given as an estimate only. Actual loaded dimensions may vary based on truck/trailer height and the loaded machine configuration/position. It is the buyer's responsibility to measure all loads before leaving our auction site to ensure the load is safe for transport. All measurements should be verified by the buyer. DO NOT rely on these measurements for transportation purposes.

Lot Nr.

17

Date

19 May 2023

**Detail Information**

Location	
Year	
Manufacturer	
Model	<b>Hayrake</b>
Asset Type	<b>Hay &amp; Forage Equipment</b>
Serial Number or VIN	
Condition	<b>5 - Very Good</b>
Hours	
Km's	
Comes with	
Notes	

**Operator Station**

Cab Type	
Transmission Detail: Speed	
Transmission Detail: Shift Type	
Differential Lock	
Notes	

**Engine**

Fuel Type	
Manufacturer	
Model	
Notes	

**Rear Options**

Hitch Type	
PTO	
Hydraulic Outlets	
Notes	

**Body Details**

Size	
Type	
Notes	

**Drive Train**

Notes	
-------	--

**Weights**

Front Wheel Weights	
Back Wheel Weights	
Front Nose Weights	
Notes	

**Undercarriage/Suspension**

Tyre Manufacturer	
Front Tyre Size	
Rear Tyre Size	
Notes	

**Accessories**

Other	
Extensions	

**Functionality Tests**

Start	
Drives Forward	
Drives Backwards	
Brake Pedal Functions	

Functional Test Notes	
-----------------------	--

**Supporting Documents**

Certificate of Registration	
Vehicle Licence Certificate	
Service Record	
Other	



**General**

The Detailed Equipment Information is limited in scope, and BKB Auctioneers has not inspected any aspects or components of the equipment other than those expressly set forth herein. Unless expressly stated, we make no representations or warranties, express or implied, concerning the equipment or its components, including without limitation any representations or warranties concerning functionality, conformity or compliance with any safety standard or requirement of any applicable authority or regulatory body, fitness for any particular purpose, or merchantability. You are strongly advised to perform your own detailed inspection of the equipment prior to

**Functions**

The Equipment is not tested under load or operated in all available gears. We make no representation or warranty that equipment is operating in accordance with manufacturers' specifications. No inspection has been performed with respect to any functionality aspect other than those expressly included herein. Only select photos have been provided for individual undercarriage components, and may not be indicative of the condition of the entire undercarriage as a whole.

**Dimensions**

Measurements are given as an estimate only. Actual loaded dimensions may vary based on truck/trailer height and the loaded machine configuration/position. It is the buyer's responsibility to measure all loads before leaving our auction site to ensure the load is safe for transport. All measurements should be verified by the buyer. DO NOT rely on these measurements for transportation purposes.

Lot Nr.

18

Date

19 May 2023

**Detail Information**

Location	
Year	
Manufacturer	<b>Landini</b>
Model	<b>Landini 7860 tractor</b>
Asset Type	<b>Tractor</b>
Serial Number or VIN	
Condition	<b>3 - Fair</b>
Hours	<b>5473</b>
Km's	
Comes with	
Notes	

**Operator Station**

Cab Type	
Transmission Detail: Speed	
Transmission Detail: Shift Type	
Differential Lock	
Notes	

**Engine**

Fuel Type	<b>Diesel</b>
Manufacturer	
Model	
Notes	

**Rear Options**

Hitch Type	
PTO	
Hydraulic Outlets	
Notes	

**Body Details**

Size	
Type	
Notes	

**Drive Train**

Notes	
-------	--

**Weights**

Front Wheel Weights	<b>Yes</b>
Back Wheel Weights	
Front Nose Weights	
Notes	

**Undercarriage/Suspension**

Tyre Manufacturer	
Front Tyre Size	
Rear Tyre Size	
Notes	

**Accessories**

Other	
Extensions	

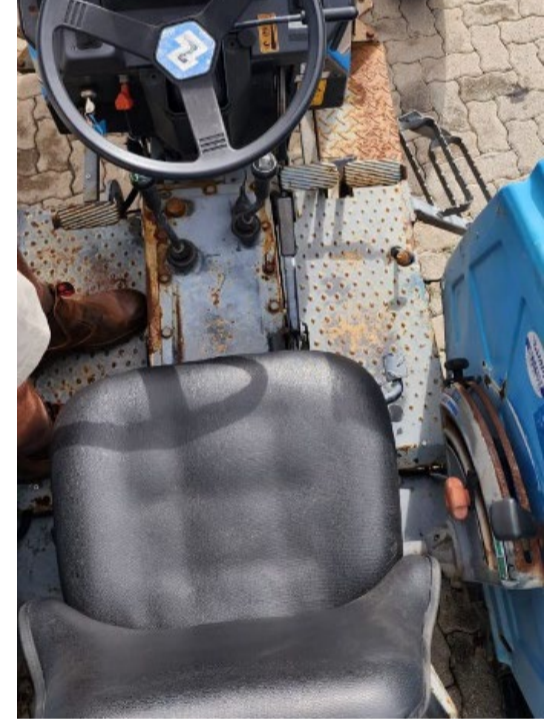
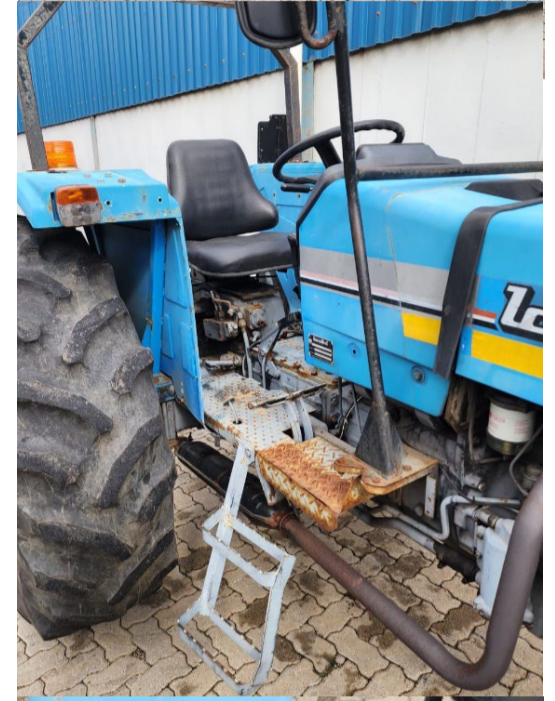
**Functionality Tests**

Start	<b>YES</b>
Drives Forward	<b>YES</b>
Drives Backwards	<b>YES</b>
Brake Pedal Functions	<b>YES</b>

Functional Test Notes

**Supporting Documents**

Certificate of Registration	
Vehicle Licence Certificate	
Service Record	
Other	



**General**

The Detailed Equipment Information is limited in scope, and BKB Auctioneers has not inspected any aspects or components of the equipment other than those expressly set forth herein. Unless expressly stated, we make no representations or warranties, express or implied, concerning the equipment or its components, including without limitation any representations or warranties concerning functionality, conformity or compliance with any safety standard or requirement of any applicable authority or regulatory body, fitness for any particular purpose, or merchantability. You are strongly advised to perform your own detailed inspection of the equipment prior to

**Functions**

The Equipment is not tested under load or operated in all available gears. We make no representation or warranty that equipment is operating in accordance with manufacturers' specifications. No inspection has been performed with respect to any functionality aspect other than those expressly included herein. Only select photos have been provided for individual undercarriage components, and may not be indicative of the condition of the entire undercarriage as a whole.

**Dimensions**

Measurements are given as an estimate only. Actual loaded dimensions may vary based on truck/trailer height and the loaded machine configuration/position. It is the buyer's responsibility to measure all loads before leaving our auction site to ensure the load is safe for transport. All measurements should be verified by the buyer. DO NOT rely on these measurements for transportation purposes.

Lot Nr.

19

Date

19 May 2023

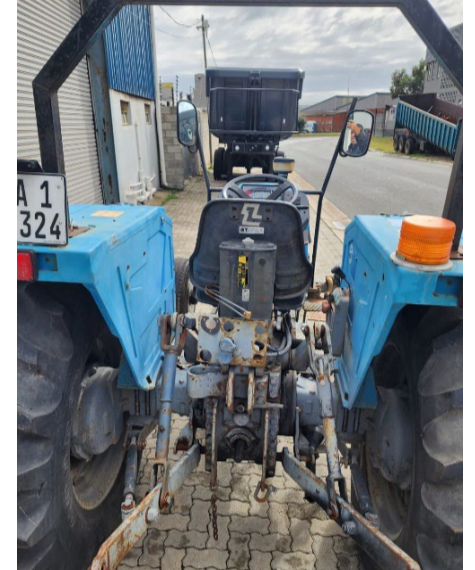
**Detail Information**

Location	
Year	
Manufacturer	<b>Landini</b>
Model	<b>Landini 7830 tractor</b>
Asset Type	<b>Tractor</b>
Serial Number or VIN	
Condition	<b>3 - Fair</b>
Hours	<b>5473</b>
Km's	
Comes with	
Notes	



**Operator Station**

Cab Type	
Transmission Detail: Speed	
Transmission Detail: Shift Type	
Differential Lock	
Notes	



**Engine**

Fuel Type	<b>Diesel</b>
Manufacturer	
Model	
Notes	

**Rear Options**

Hitch Type	
PTO	
Hydraulic Outlets	
Notes	

**Body Details**

Size	
Type	
Notes	

**Drive Train**

Notes	
-------	--

**Weights**

Front Wheel Weights	<b>Yes</b>
Back Wheel Weights	
Front Nose Weights	
Notes	

**Undercarriage/Suspension**

Tyre Manufacturer	
Front Tyre Size	
Rear Tyre Size	
Notes	

**Accessories**

Other	
Extensions	

**Functionality Tests**

Start	<b>YES</b>
Drives Forward	<b>YES</b>
Drives Backwards	<b>YES</b>
Brake Pedal Functions	<b>YES</b>

**Supporting Documents**

Certificate of Registration	
Vehicle Licence Certificate	
Service Record	
Other	

Functional Test Notes	
-----------------------	--

**General**

The Detailed Equipment Information is limited in scope, and BKB Auctioneers has not inspected any aspects or components of the equipment other than those expressly set forth herein. Unless expressly stated, we make no representations or warranties, express or implied, concerning the equipment or its components, including without limitation any representations or warranties concerning functionality, conformity or compliance with any safety standard or requirement of any applicable authority or regulatory body, fitness for any particular purpose, or merchantability. You are strongly advised to perform your own detailed inspection of the equipment prior to

**Functions**

The Equipment is not tested under load or operated in all available gears. We make no representation or warranty that equipment is operating in accordance with manufacturers' specifications. No inspection has been performed with respect to any functionality aspect other than those expressly included herein. Only select photos have been provided for individual undercarriage components, and may not be indicative of the condition of the entire undercarriage as a whole.

**Dimensions**

Measurements are given as an estimate only. Actual loaded dimensions may vary based on truck/trailer height and the loaded machine configuration/position. It is the buyer's responsibility to measure all loads before leaving our auction site to ensure the load is safe for transport. All measurements should be verified by the buyer. DO NOT rely on these measurements for transportation purposes.



Lot Nr.

20

Date

19 May 2023

**Detail Information**

Location	
Year	
Manufacturer	<b>DF</b>
Model	<b>DF 504G3 tractor</b>
Asset Type	<b>Tractor</b>
Serial Number or VIN	
Condition	<b>5 - Very Good</b>
Hours	<b>5473</b>
Km's	
Comes with	<b>Front end scoop, fork and back hoe</b>
Notes	

**Operator Station**

Cab Type	
Transmission Detail: Speed	
Transmission Detail: Shift Type	
Differential Lock	
Notes	

**Engine**

Fuel Type	<b>Diesel</b>
Manufacturer	
Model	
Notes	

**Rear Options**

Hitch Type	
PTO	
Hydraulic Outlets	
Notes	

**Body Details**

Size	
Type	
Notes	

**Drive Train**

Notes	
-------	--

**Weights**

Front Wheel Weights	<b>Yes</b>
Back Wheel Weights	<b>Yes</b>
Front Nose Weights	
Notes	

**Undercarriage/Suspension**

Tyre Manufacturer	
Front Tyre Size	
Rear Tyre Size	
Notes	

**Accessories**

Other	
Extensions	

**Functionality Tests**

Start	<b>YES</b>
Drives Forward	<b>YES</b>
Drives Backwards	<b>YES</b>
Brake Pedal Functions	<b>YES</b>

Functional Test Notes

**Supporting Documents**

Certificate of Registration	
Vehicle Licence Certificate	
Service Record	
Other	



**General**

The Detailed Equipment Information is limited in scope, and BKB Auctioneers has not inspected any aspects or components of the equipment other than those expressly set forth herein. Unless expressly stated, we make no representations or warranties, express or implied, concerning the equipment or its components, including without limitation any representations or warranties concerning functionality, conformity or compliance with any safety standard or requirement of any applicable authority or regulatory body, fitness for any particular purpose, or merchantability. You are strongly advised to perform your own detailed inspection of the equipment prior to

**Functions**

The equipment is not tested under load or operated in all available gears. We make no representation or warranty that equipment is operating in accordance with manufacturers' specifications. No inspection has been performed with respect to any functionality aspect other than those expressly included herein. Only select photos have been provided for individual undercarriage components, and may not be indicative of the condition of the entire undercarriage as a whole.

**Dimensions**

Measurements are given as an estimate only. Actual loaded dimensions may vary based on truck/trailer height and the loaded machine configuration/position. It is the buyer's responsibility to measure all loads before leaving our auction site to ensure the load is safe for transport. All measurements should be verified by the buyer. DO NOT rely on these measurements for transportation purposes.



Lot Nr.

21

Date

19 May 2023

**Detail Information**

Location	
Year	2014
Manufacturer	UD Trucks
Model	UD 100 Truck
Asset Type	Truck
Serial Number or VIN	
Condition	5 - Very Good
Hours	
Km's	268 000km

Comes with	
Notes	One Owner

**Operator Station**

Cab Type	
Transmission Detail: Speed	
Transmission Detail: Shift Type	Manual
Differential Lock	
Notes	

**Engine**

Fuel Type	
Manufacturer	
Model	
Notes	

**Rear Options**

Hitch Type	
PTO	
Hydraulic Outlets	
Notes	

**Body Details**

Size	
Type	
Notes	

**Drive Train**

Notes	
-------	--

**Weights**

Front Wheel Weights	
Back Wheel Weights	
Front Nose Weights	
Notes	

**Undercarriage/Suspension**

Tyre Manufacturer	
Front Tyre Size	
Rear Tyre Size	
Notes	

**Accessories**

Other	
Extensions	

**Functionality Tests**

Start	YES
Drives Forward	YES
Drives Backwards	YES
Brake Pedal Functions	YES

Functional Test Notes

**Supporting Documents**

Certificate of Registration	
Vehicle Licence Certificate	YES
Service Record	YES
Other	



**General**

The Detailed Equipment Information is limited in scope, and BKB Auctioneers has not inspected any aspects or components of the equipment other than those expressly set forth herein. Unless expressly stated, we make no representations or warranties, express or implied, concerning the equipment or its components, including without limitation any representations or warranties concerning functionality, conformity or compliance with any safety standard or requirement of any applicable authority or regulatory body, fitness for any particular purpose, or merchantability. You are strongly advised to perform your own detailed inspection of

**Functions**

The equipment is not tested under load or operated in all available gears. We make no representation or warranty that equipment is operating in accordance with manufacturers' specifications. No inspection has been performed with respect to any functionality aspect other than those expressly included herein. Only select photos have been provided for individual undercarriage components, and may not be indicative of the condition of the entire undercarriage as a whole.

**Dimensions**

Measurements are given as an estimate only. Actual loaded dimensions may vary based on truck/trailer height and the loaded machine configuration/position. It is the buyer's responsibility to measure all loads before leaving our auction site to ensure the load is safe for transport. All measurements should be verified by the buyer. DO NOT rely on these measurements for transportation purposes.