

ALL-IN-ONE


CRUX  
DOHNES


ONS WYS DIE WEG | WE SHOW THE WAY


DONDERDAG, 10 OKTOBER 2024  
| 11H00 | GOLF KLUB, EDENBURG

29°44'10.3"S 25°55'41.7"E

Wikus Bekker - 082 413 3834

 cruxdohnes@gmail.com

 www.crux/dohnes.co.za

 www.facebook.com/cruxdohnes

# Lente Veiling

AANBOD: 40 Ramme | 300 Oop Ooie (4T- VB - 2 Mnde Wol) - bestaan uit 50 Stoet Ooie



NAVRAE:  
WIKUS BEKKER (TELER)  
JAN JOUBERT (BKB)  
FRIKKIE STRAUSS (BKB)  
SAREL CILLIERS (BKB)  
AFSLAER: JP MARAIS (BKB)

082 413 3834  
082 573 4980  
072 772 4557  
082 447 7450  
060 551 6537

**BKB**

LEWENDEHAWE &  
AFSLAERSDIENSTE

BESDEK ONS BY [WWW.BKB.CO.ZA](http://WWW.BKB.CO.ZA) VOLG ONS OP:  FACEBOOK  INSTAGRAM  LINKEDIN  YOUTUBE

AFSLAERS: POISBUS 304, CRADDOCK, 5680 TEL: 048 881 3000 FAX: 048 881 2605 E-POS: BEMARK.CRADDOCK@BKB.CO.ZA REG. NO. 1998/012435/06

# **Bestuurs Inligting**

**Eienaar: Wikus Bekker  
All-in-One Crux Dohnes**

## **Ramme Lot 1 tot 42 gebore Nov/Des 2022**

( ramme word op 100 dae geweeg en REV 1 gespuit)

- 10/05/2023 Skeer/top die ramme
- 17/05/2023 Spuit Multimin, Spuit Virbamec LA
- 24/05/2023 Ent Bloutong A , Deadline
- 07/06/2023 Doseer Byboost
- 12/07/2023 Ent Bloutong B
- 10/08/2023 Bloutong C
- 30/08/2023 Prodose orange, Deadline, Bloednier
- 22/11/2023 Prestasie toetsing: Weeg,Skeer, midrib van Maandag tot Woensdag
- 17/01/2024 Doseer Yellow, Spuit Multimin
- 21/02/2024 Spuit Slendalkoors
- 19/03/2024 Finale keuring deur Dohne Merino inspekteurs.
- 07/05/2024 Skeer ramme, Virbamec LA
- 08/07/2024 Ramme begin byvoeding ontvang om hulle voor te berei vir die veiling.  
Spuit Bloednier
- 12/08/2024 Gaan die veilingsgroep weer deur en haal ramme uit wat nie op standaard is nie.
- 12/09/2024 Doen vrugbaarheidstoetse en bloedoetse vir Brucelle Ovis . GeneCO
- 09/10/2024 Finale klasdag vir die veiling en besigtiging die middag.

**Slegs ooi se nageslag wat 100% of meer speen word aangebied op die veiling.  
Dit is teelbeleid om n ooi wat nie n lam speen nie, te kul uit die stoet uit.**

## **BAIE DANKIE AAN ONS KEURDERS**

WAT TOP RAMME VIR DIE VEILING UITGESOEK HET:

**Jan Joubert (BKB)**

**Frikkie Strauss (BKB)**

**Vaughan Collier (Dohne Merino Rasbestuurder)**

## **Spesiale dank aan my sakevennote/borge**

Sirkie Pieterse van **VIRBAC**

Ters Pretorius van **Telweidre**

**Spesiale dank aan Jan Joubert van BKB!!!**

# DOHNE MERINO



(043)-6831330



(043)-6831931



61

STUTTERHEIM 4930

[www.dohnemerino.com](http://www.dohnemerino.com)

[manager@dohnemerino.org](mailto:manager@dohnemerino.org)



(043)-6831330



(043)-6831931



61

STUTTERHEIM 4930

[www.dohnemerino.com](http://www.dohnemerino.com)

[manager@dohnemerino.org](mailto:manager@dohnemerino.org)

## DOHNEMERINO TELERSGENOOTSKAP VAN SA DOHNE MERINO BREED SOCIETY OF SA

Die taak van die Genootskap se lede is om ramme te teel, maar nie sommer enige ramme nie. Ons teel ramme wat INSTAAT is om PRODUKTIWITEIT te VERHOOG en dus die WINSGEWENDHEID van die wolskaap-kuddes in Suid Afrika.

Dohnetelers skenk in die seleksieprogram aandag aan eienskappe met kontant waarde. Dit sluit in reproduksie, lamgroeiempo, moedereienskappe en Merino wolproduksie. Nie alleen meet Dohnetelers hierdie belangrike eienskappe van hulle skape wat die akkuraatheid van seleksie verdubbel nie, maar hulle pas die mees doeltreffende teelbeginsels en bestuurstegnieke toe om te verseker dat die vordering vinnig en deurlopend is.

Dohnetelers werk as 'n span. Spangees, entoesiasme en toewyding is kenmerkend van almal. Dit is die redes vir die sukses van vele projekte wat die Genootskap onderneem. Dit is ook die rede vir die fenomenale sukses van die DOHNEMERINO skaapas.

**DEUR DOHNEMERINO RAMME TE  
GEBRUIK KAN U OOK AANSLUIT BY  
HIERDIE KRAGTIGE HULPBRON VAN  
HOËR KUDDEPRODUKTIWITEIT**

The business of the members of the Society is to breed rams. But not just any rams - we breed sheep which are CAPABLE of INCREASING the PRODUCTIVITY, and therefore the PROFITABILITY of woolled sheep flocks in South Africa.

Dohne Merino breeders pay attention to cash value characteristics in their selection programmes. These include reproduction, lamb growth rate, maternal ability and Merino wool production. Not only do Dohne Merino breeders measure these essential characteristics in their sheep, thus doubling the accuracy of selection, but they also apply the most effective management techniques and breeding principles to ensure that improvement is both rapid and continuous.

Dohne Merino breeders operate as a team. Team spirit, enthusiasm and dedication are features common to them all. These are the reasons for the success of the many projects undertaken by the Society. They are also the reason for the phenomenal success of the DOHNE MERINO sheep.

**BY USING DOHNE MERINO RAMS, YOU TOO  
CAN PLUG INTO THIS POWERFUL SOURCE  
OF HIGHER FLOCK PRODUCTIVITY.**

*Die Skaap vir die huidige ekonomiese klimaat  
The Sheep for the current economic climate*

## VOORSPELDE TEELWAARDES (VTW'S)

Teeltwaardes vir ramme in hierdie katalogus is uit 'n nasionale rasantleding verkry. Hierdie tussen-kudde evaluering maak teeltwaardes van alle diere vergelykbaar.

### **INTERPRETASIE EN TOEPASSING:**

As voorbeeld, kan ons die VTW veseldikte van 2 ramme neem. **Indien ram A 'n negatiewe VTW van -1.5 mikron het en ram B ook 'n negatiewe VTW van -0.3 is die relatiewe genetiese verskil -1.2 mikron. Die veseldikte van ram A se nageslag sal onder gelyke omstandighede waarskynlik  $-1.2 \div 2 = 0.6$  mikron fyner wees as dié van ram B.** (Ons deel die totaal deur 2 aangesien die ram en die ooi elkeen slegs 50% van hulle gene aan die nageslag oordra).

VTW's toon verskille tussen diere in absolute waardes aan nl. kg of mikron (Veseldikte). Speengewig VTW's word aangedui as speen direk (individu se direkte genetiese meriete om vinnig te groei tot op 100 dae ouderdom) en speen maternaal (die gedeelte van elke individu se meriete op 100 dae ouderdom wat toegeskryf word aan die genetiese vermoë van die dier se moeder). Speen direk en speen maternale VTW's word in 'n verhouding van 1 : 2 ingesluit in die seleksie indeks om die **Algemene Meriete (AM)** van elke dier te bepaal. AM weerspieël die **groeivermoë** van Dohne Merino's tot op 100 dae ouderdom soos gebalanseer met wolproduksie en wolkwaliteit (veseldikte).

Die teeltwaarde vir reproduksie word onafhanklik van algemene meriete aangedui as getal lammers gespeen per ooi gelam. Hierdie teeltwaarde word bereken deur alle lammers per ooi leeftyd in ag te neem. Dit word dus uitgedruk as die persentasie verandering wat per ooileeftyd verwag kan word (byvoorbeeld + 1.431 persent lammers meer speen per ooi gelam per ooileeftyd).

<b>Simbool</b>	<b>Relatiewe belangrikheid in populasie</b>	<b>Verwagte voorspelling:</b>
*	Boonste 10% van die eienskap	Baie goeie kans dat hierdie dier die eienskap in jou kudde sal verander.
+	Boonste 40% van die eienskap	Bo gemiddeld. Daar is moontlikheid dat hierdie dier die eienskap in jou kudde sal verander.
=	Tussen onderste 40% en boonste 40% van die eienskap	Gemiddeld: Daar is moontlikheid dat hierdie dier die eienskap in jou kudde min sal verander.
-	Onderste 40% van die eienskap	Onder gemiddeld: Daar is moontlikheid dat hierdie dier die eienskap in jou kudde sal verander (moontlik verswak).
x	Onderste 10% van die eienskap	Ver ondergemiddeld: Baie goeie kans dat hierdie dier die eienskap in jou kudde (waarskynlik) sal verander (verswak).

**VTW** = Voorspelde Teeltwaarde  
**AM** = Algemene Meriete

**LM** = Liggaamsmassa / **SVM** = Skoonvagnmassa / **VD** = Veseldikte  
**Par/Lam** = Aantal parings en lammers geproduseer deur moeder.

### **Basisjaar:**

Die basisjaar vir teeltwaarde vergelykings verskuif elke jaar sodat VTW vergelykings in verhouding bly tot tot die huidige populasie geregistreeerde Dohne Merinos. Let op dat VTW's dinamies is en verander namate produksie-inligting oor verwante diere vermeerder. Die algemene meriete (AM) van diere verander dus voortdurend en raak meer akkuraat en betroubaar.

## ESTIMATED BREEDING VALUES (EBV's)

Breeding values for rams in this catalogue were obtained from a national breed analysis. The result of this across flock comparison is that EBV's of all animals in this catalogue can be compared.

### INTERPRETATION AND APPLICATION

Take for example the EBV of the fibre diameter for two rams. **If ram A has a negative EBV of -1.5 micron and ram B also a negative EBV of -0.3, the relative genetic difference will be -1.2 micron. Under similar circumstances the progeny of ram A will in all probability be  $-1.2 \div 2 = 0.6$  micron finer than that of ram B.** (We halve the result because rams and ewes each contribute only half the genes to their progeny).

EBV's express differences between animals in absolute terms viz. Kg. or micron (fibre diameter). Weaning weight EBV's are expressed as Weaning direct (the individual's own ability to grow up to 100 days of age) and weaning maternal (the portion of each individual's merit at 100 days of age ascribed to the genetic mothering ability of the specific individual's dam). Weaning direct and weaning maternal EBV's are included into the selection index, in a ratio of 1 : 2 in order to estimate the **General Merit (GM)** of each animal. GM reflect the Dohne Merino's ability to grow fast up to 100 days of age as balanced against wool production and wool quality (fibre diameter).

Breeding values for reproduction are expressed in terms of numbers of lambs weaned per ewe lambs, independently from general merit. These breeding values are calculated by taking into account all lambs weaned per ewe lifetime. It is therefore expressed as the percentage change per ewe lifetime to be expected. For example +1.431 percent lambs weaned per ewe which lambed per ewe lifetime.

Symbol	Relative importance in population	Expected prediction:
*	Top 10% of trait	Very good chance that animal will change this trait in your flock.
+	Top 40% of trait	Above average. Possibility that this animal will change this trait in your flock.
=	Between bottom 40% and top 40% of trait	Average: Possibility that this animal will effect little change in this trait in your flock.
-	Bottom 40% of trait	Below average: It is possible that this animal will change the trait (probably deteriorate) in your flock.
x	Bottom 10% of this trait	Far below average: Very good chance that this animal will change the trait (probably deteriorate)in your flock.

**EBV** = Estimated Breeding Value  
**GM** = General Merit

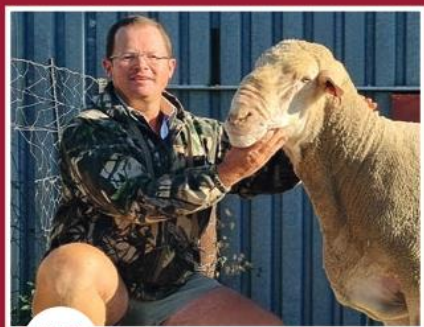
**BWT** = Body Weight / **CFW** = Clean Fleece Weight / **FD** = Fibre Diameter  
**Mat/Lamb** = number of matings and lambs produced by dam

### Base year:

The base year for breeding value comparisons shifts every year to facilitate comparison of EBV's to the current alive population of Dohne Merinos. Note also that EBVs are dynamic and change, depending on the accumulation of production data measured on related animals. General Merit of animals therefore change continuously and becomes more accurate and reliable with time.

ALL-IN-ONE  
**CRUX**<sup>+</sup>  
**DOHNES**

ONS WYS DIE WEG | WE SHOW THE WAY



40 ramme, 200 ooie  
19de veiling, 10 Okt 2024



Jan Joubert - 082 573 4980

**ALL-IN-ONE CRUX**

---

**EIENAAR / OWNER**

**ALL-IN-ONE  
POSBUS 194  
GELUKSDAM  
EDENBURG**

**Kontak: MNR W BEKKER  
Selfoon: 082 413 3834  
ePos: cruxdohnes@gmail.com**

---

**SIEN AANGEHEG**



**ALL-IN-ONE CRUX**

<b>Lot Nr / Lot No</b>	<b>1</b>	
<b>Ram Nr / Ram No</b>	<b>JL222001</b>	
<b>Simbool / Symbol</b>	<b>AA</b>	
Geboorte Status / Birth Status	1	
<b>Eienskap / Trait</b>	<b>VTW/EBV</b>	<b>Sim/Sym</b>
Lammers Gespeen / Lambs Weaned (%)	-1.5895	-
Speen Maternaal / Wean Maternal	-0.1992	-
Speen Direk / Wean Direct	0.2837	-
Liggaamsmassa / Body Weight 12 Mths	0.4553	-
Scoonvaqmassa / Clean Fleece Weight	0.2017	+
Veseldikte / Fibre Diameter	-0.7662	*
Algemene Meriete / General Merit	8.8100	+
<b>Moeder / Dam</b>	<b>JL191702</b>	
Parings - Lammers / Matings - Lambs	3	3
<b>Vaar / Sire</b>	<b>SD170256</b>	
Notas / Notes:		
Prys / Price:		

<b>Lot Nr / Lot No</b>	<b>2</b>	
<b>Ram Nr / Ram No</b>	<b>JL222045</b>	
<b>Simbool / Symbol</b>	<b>AA</b>	
Geboorte Status / Birth Status	1	
<b>Eienskap / Trait</b>	<b>VTW/EBV</b>	<b>Sim/Sym</b>
Lammers Gespeen / Lambs Weaned (%)	-3.7262	-
Speen Maternaal / Wean Maternal	-0.0042	=
Speen Direk / Wean Direct	1.9821	+
Liggaamsmassa / Body Weight 12 Mths	3.1388	+
Scoonvaqmassa / Clean Fleece Weight	0.1129	=
Veseldikte / Fibre Diameter	-0.9738	*
Algemene Meriete / General Merit	12.2300	+
<b>Moeder / Dam</b>	<b>JL191780</b>	
Parings - Lammers / Matings - Lambs	2	2
<b>Vaar / Sire</b>	<b>SD170256</b>	
Notas / Notes:		
Prys / Price:		

**ALL-IN-ONE CRUX**

<b>Lot Nr / Lot No</b>	<b>3</b>	
<b>Ram Nr / Ram No</b>	<b>JL222047</b>	
<b>Simbool / Symbol</b>	<b>A</b>	
Geboorte Status / Birth Status	1	
<b>Eienskap / Trait</b>	<b>VTW/EBV</b>	<b>Sim/Sym</b>
Lammers Gespeen / Lambs Weaned (%)	-1.6523	-
Speen Maternaal / Wean Maternal	-0.6642	-
Speen Direk / Wean Direct	0.4013	-
Liggaamsmassa / Body Weight 12 Mths	-0.4540	-
Scoonvaqmassa / Clean Fleece Weight	0.1822	+
Veseldikte / Fibre Diameter	0.1835	=
Algemene Meriete / General Merit	1.0800	-
<b>Moeder / Dam</b>	<b>JL183006</b>	
Parings - Lammers / Matings - Lambs	4	6
<b>Vaar / Sire</b>	<b>SD170256</b>	
Notas / Notes:		
Prys / Price:		

<b>Lot Nr / Lot No</b>	<b>4</b>	
<b>Ram Nr / Ram No</b>	<b>JL222049</b>	
<b>Simbool / Symbol</b>	<b>A</b>	
Geboorte Status / Birth Status	2	
<b>Eienskap / Trait</b>	<b>VTW/EBV</b>	<b>Sim/Sym</b>
Lammers Gespeen / Lambs Weaned (%)	1.9061	+
Speen Maternaal / Wean Maternal	-0.5053	-
Speen Direk / Wean Direct	1.7415	+
Liggaamsmassa / Body Weight 12 Mths	2.7043	+
Scoonvaqmassa / Clean Fleece Weight	0.1542	+
Veseldikte / Fibre Diameter	-0.3218	+
Algemene Meriete / General Merit	6.7700	+
<b>Moeder / Dam</b>	<b>JL180271</b>	
Parings - Lammers / Matings - Lambs	4	7
<b>Vaar / Sire</b>	<b>SD170256</b>	
Notas / Notes:		
Prys / Price:		

**ALL-IN-ONE CRUX**

<b>Lot Nr / Lot No</b>	<b>5</b>	
<b>Ram Nr / Ram No</b>	<b>JL222054</b>	
<b>Simbool / Symbol</b>	<b>A</b>	
Geboorte Status / Birth Status	1	
<b>Eienskap / Trait</b>	<b>VTW/EBV</b>	<b>Sim/Sym</b>
Lammers Gespeen / Lambs Weaned (%)	-2.9048	-
Speen Maternaal / Wean Maternal	-0.9235	x
Speen Direk / Wean Direct	1.4504	+
Liggaamsmassa / Body Weight 12 Mths	1.3037	=
Scoonvaqmassa / Clean Fleece Weight	0.4246	*
Veseldikte / Fibre Diameter	0.9877	-
Algemene Meriete / General Merit	2.6300	-
<b>Moeder / Dam</b>	<b>JL161180</b>	
Parings - Lammers / Matings - Lambs	5	7
<b>Vaar / Sire</b>	<b>SD170256</b>	
Notas / Notes:		
Prys / Price:		

<b>Lot Nr / Lot No</b>	<b>6</b>	
<b>Ram Nr / Ram No</b>	<b>JL222089</b>	
<b>Simbool / Symbol</b>	<b>AA</b>	
Geboorte Status / Birth Status	1	
<b>Eienskap / Trait</b>	<b>VTW/EBV</b>	<b>Sim/Sym</b>
Lammers Gespeen / Lambs Weaned (%)	-2.4382	-
Speen Maternaal / Wean Maternal	-0.0857	=
Speen Direk / Wean Direct	1.2223	+
Liggaamsmassa / Body Weight 12 Mths	2.5278	+
Scoonvaqmassa / Clean Fleece Weight	-0.0670	-
Veseldikte / Fibre Diameter	-0.8519	*
Algemene Meriete / General Merit	5.7100	=
<b>Moeder / Dam</b>	<b>JL183023</b>	
Parings - Lammers / Matings - Lambs	2	2
<b>Vaar / Sire</b>	<b>SD170256</b>	
Notas / Notes:		
Prys / Price:		

**ALL-IN-ONE CRUX**

<b>Lot Nr / Lot No</b>	<b>7</b>	
<b>Ram Nr / Ram No</b>	<b>JL222092</b>	
<b>Simbool / Symbol</b>	<b>AA</b>	
Geboorte Status / Birth Status	2	
<b>Eienskap / Trait</b>	<b>VTW/EBV</b>	<b>Sim/Sym</b>
Lammers Gespeen / Lambs Weaned (%)	4.1590	*
Speen Maternaal / Wean Maternal	-0.3023	-
Speen Direk / Wean Direct	1.7042	+
Liggaamsmassa / Body Weight 12 Mths	2.4973	+
Scoonvaqmassa / Clean Fleece Weight	0.3624	*
Veseldikte / Fibre Diameter	-0.1656	+
Algemene Meriete / General Merit	11.1400	+
<b>Moeder / Dam</b>	<b>JL160968</b>	
Parings - Lammers / Matings - Lambs	5	10
<b>Vaar / Sire</b>	<b>SD170256</b>	
Notas / Notes:		
Prys / Price:		

<b>Lot Nr / Lot No</b>	<b>8</b>	
<b>Ram Nr / Ram No</b>	<b>JL222125</b>	
<b>Simbool / Symbol</b>	<b>A</b>	
Geboorte Status / Birth Status	3	
<b>Eienskap / Trait</b>	<b>VTW/EBV</b>	<b>Sim/Sym</b>
Lammers Gespeen / Lambs Weaned (%)	0.4798	+
Speen Maternaal / Wean Maternal	-0.2990	-
Speen Direk / Wean Direct	2.0327	+
Liggaamsmassa / Body Weight 12 Mths	4.0019	*
Scoonvaqmassa / Clean Fleece Weight	0.1212	=
Veseldikte / Fibre Diameter	0.0669	=
Algemene Meriete / General Merit	5.1000	=
<b>Moeder / Dam</b>	<b>JL182331</b>	
Parings - Lammers / Matings - Lambs	4	8
<b>Vaar / Sire</b>	<b>SD170256</b>	
Notas / Notes:		
Prys / Price:		

**ALL-IN-ONE CRUX**

<b>Lot Nr / Lot No</b>	<b>9</b>	
<b>Ram Nr / Ram No</b>	<b>JL222129</b>	
<b>Simbool / Symbol</b>	<b>A</b>	
Geboorte Status / Birth Status	2	
<b>Eienskap / Trait</b>	<b>VTW/EBV</b>	<b>Sim/Sym</b>
Lammers Gespeen / Lambs Weaned (%)	2.3263	+
Speen Maternaal / Wean Maternal	-0.4344	-
Speen Direk / Wean Direct	0.8848	=
Liggaamsmassa / Body Weight 12 Mths	2.0147	+
Scoonvaqmassa / Clean Fleece Weight	0.3828	*
Veseldikte / Fibre Diameter	0.6994	-
Algemene Meriete / General Merit	4.2600	=
<b>Moeder / Dam</b>	<b>JL180755</b>	
Parings - Lammers / Matings - Lambs	3	5
<b>Vaar / Sire</b>	<b>SD170256</b>	
Notas / Notes:		
Prys / Price:		

<b>Lot Nr / Lot No</b>	<b>10</b>	
<b>Ram Nr / Ram No</b>	<b>JL222133</b>	
<b>Simbool / Symbol</b>	<b>A</b>	
Geboorte Status / Birth Status	1	
<b>Eienskap / Trait</b>	<b>VTW/EBV</b>	<b>Sim/Sym</b>
Lammers Gespeen / Lambs Weaned (%)	0.2037	=
Speen Maternaal / Wean Maternal	-0.6428	-
Speen Direk / Wean Direct	2.3524	+
Liggaamsmassa / Body Weight 12 Mths	3.3000	+
Scoonvaqmassa / Clean Fleece Weight	0.4396	*
Veseldikte / Fibre Diameter	0.5274	-
Algemene Meriete / General Merit	8.6100	+
<b>Moeder / Dam</b>	<b>JL190156</b>	
Parings - Lammers / Matings - Lambs	2	2
<b>Vaar / Sire</b>	<b>SD170256</b>	
Notas / Notes:		
Prys / Price:		



Okt  
2023

JL 1.2162  
R68 000



Feb  
2024

JL 1.1387  
R52 000



**ALL-IN-ONE CRUX**

<b>Lot Nr / Lot No</b>	<b>11</b>	
<b>Ram Nr / Ram No</b>	<b>JL222134</b>	
<b>Simbool / Symbol</b>	<b>A</b>	
Geboorte Status / Birth Status	1	
<b>Eienskap / Trait</b>	<b>VTW/EBV</b>	<b>Sim/Sym</b>
Lammers Gespeen / Lambs Weaned (%)	-2.0036	-
Speen Maternaal / Wean Maternal	-0.1924	-
Speen Direk / Wean Direct	2.5253	*
Liggaamsmassa / Body Weight 12 Mths	3.0458	+
Scoonvaqmassa / Clean Fleece Weight	0.2519	+
Veseldikte / Fibre Diameter	-0.7009	*
Algemene Meriete / General Merit	13.9700	+
<b>Moeder / Dam</b>	<b>JL200804</b>	
Parings - Lammers / Matings - Lambs	2	4
<b>Vaar / Sire</b>	<b>SD170256</b>	
Notas / Notes:		
Prys / Price:		

<b>Lot Nr / Lot No</b>	<b>12</b>	
<b>Ram Nr / Ram No</b>	<b>JL222137</b>	
<b>Simbool / Symbol</b>	<b>AA</b>	
Geboorte Status / Birth Status	1	
<b>Eienskap / Trait</b>	<b>VTW/EBV</b>	<b>Sim/Sym</b>
Lammers Gespeen / Lambs Weaned (%)	-3.6363	-
Speen Maternaal / Wean Maternal	0.1450	+
Speen Direk / Wean Direct	2.9033	*
Liggaamsmassa / Body Weight 12 Mths	3.3638	*
Scoonvaqmassa / Clean Fleece Weight	0.1935	+
Veseldikte / Fibre Diameter	-0.2112	+
Algemene Meriete / General Merit	11.8300	+
<b>Moeder / Dam</b>	<b>JL181191</b>	
Parings - Lammers / Matings - Lambs	4	4
<b>Vaar / Sire</b>	<b>SD170256</b>	
Notas / Notes:		
Prys / Price:		

**ALL-IN-ONE CRUX**

<b>Lot Nr / Lot No</b>	<b>13</b>	
<b>Ram Nr / Ram No</b>	<b>JL222142</b>	
<b>Simbool / Symbol</b>	<b>A</b>	
Geboorte Status / Birth Status	1	
<b>Eienskap / Trait</b>	<b>VTW/EBV</b>	<b>Sim/Sym</b>
Lammers Gespeen / Lambs Weaned (%)	-1.5070	-
Speen Maternaal / Wean Maternal	-0.2929	-
Speen Direk / Wean Direct	1.6329	+
Liggaamsmassa / Body Weight 12 Mths	2.6255	+
Scoonvaqmassa / Clean Fleece Weight	0.2410	+
Veseldikte / Fibre Diameter	0.4888	-
Algemene Meriete / General Merit	4.4400	=
<b>Moeder / Dam</b>	<b>JL194079</b>	
Parings - Lammers / Matings - Lambs	2	2
<b>Vaar / Sire</b>	<b>SD170256</b>	
Notas / Notes:		
Prys / Price:		

<b>Lot Nr / Lot No</b>	<b>14</b>	
<b>Ram Nr / Ram No</b>	<b>JL222145</b>	
<b>Simbool / Symbol</b>	<b>A</b>	
Geboorte Status / Birth Status	1	
<b>Eienskap / Trait</b>	<b>VTW/EBV</b>	<b>Sim/Sym</b>
Lammers Gespeen / Lambs Weaned (%)	-5.6028	x
Speen Maternaal / Wean Maternal	0.3135	+
Speen Direk / Wean Direct	0.7224	=
Liggaamsmassa / Body Weight 12 Mths	1.8157	+
Scoonvaqmassa / Clean Fleece Weight	-0.1398	x
Veseldikte / Fibre Diameter	-0.4754	+
Algemene Meriete / General Merit	2.4400	-
<b>Moeder / Dam</b>	<b>JL182150</b>	
Parings - Lammers / Matings - Lambs	4	4
<b>Vaar / Sire</b>	<b>SD170256</b>	
Notas / Notes:		
Prys / Price:		



**ALL-IN-ONE CRUX**

<b>Lot Nr / Lot No</b>	<b>15</b>	
<b>Ram Nr / Ram No</b>	<b>JL222164</b>	
<b>Simbool / Symbol</b>	<b>A</b>	
Geboorte Status / Birth Status	1	
<b>Eienskap / Trait</b>	<b>VTW/EBV</b>	<b>Sim/Sym</b>
Lammers Gespeen / Lambs Weaned (%)	-1.4334	-
Speen Maternaal / Wean Maternal	-0.2710	-
Speen Direk / Wean Direct	2.7140	*
Liggaamsmassa / Body Weight 12 Mths	3.3114	+
Scoonvaqmassa / Clean Fleece Weight	0.1403	=
Veseldikte / Fibre Diameter	-0.3915	+
Algemene Meriete / General Merit	9.7300	+
<b>Moeder / Dam</b>	<b>JL190091</b>	
Parings - Lammers / Matings - Lambs	3	3
<b>Vaar / Sire</b>	<b>SD170256</b>	
Notas / Notes:		
Prys / Price:		

<b>Lot Nr / Lot No</b>	<b>16</b>	
<b>Ram Nr / Ram No</b>	<b>JL222165</b>	
<b>Simbool / Symbol</b>	<b>AA</b>	
Geboorte Status / Birth Status	1	
<b>Eienskap / Trait</b>	<b>VTW/EBV</b>	<b>Sim/Sym</b>
Lammers Gespeen / Lambs Weaned (%)	-3.3638	-
Speen Maternaal / Wean Maternal	-0.3087	-
Speen Direk / Wean Direct	1.7324	+
Liggaamsmassa / Body Weight 12 Mths	3.1547	+
Scoonvaqmassa / Clean Fleece Weight	0.0431	-
Veseldikte / Fibre Diameter	-1.0536	*
Algemene Meriete / General Merit	9.4700	+
<b>Moeder / Dam</b>	<b>JL191866</b>	
Parings - Lammers / Matings - Lambs	3	3
<b>Vaar / Sire</b>	<b>SD170256</b>	
Notas / Notes:		
Prys / Price:		

**ALL-IN-ONE CRUX**

<b>Lot Nr / Lot No</b>	<b>17</b>	
<b>Ram Nr / Ram No</b>	<b>JL222169</b>	
<b>Simbool / Symbol</b>	<b>A</b>	
Geboorte Status / Birth Status	2	
<b>Eienskap / Trait</b>	<b>VTW/EBV</b>	<b>Sim/Sym</b>
Lammers Gespeen / Lambs Weaned (%)	1.5216	+
Speen Maternaal / Wean Maternal	-0.3881	-
Speen Direk / Wean Direct	2.7264	*
Liggaamsmassa / Body Weight 12 Mths	3.1746	+
Scoonvaqmassa / Clean Fleece Weight	0.1331	=
Veseldikte / Fibre Diameter	0.2085	=
Algemene Meriete / General Merit	5.5300	=
<b>Moeder / Dam</b>	<b>JL180788</b>	
Parings - Lammers / Matings - Lambs	3	5
<b>Vaar / Sire</b>	<b>SD170256</b>	
Notas / Notes:		
Prys / Price:		

<b>Lot Nr / Lot No</b>	<b>18</b>	
<b>Ram Nr / Ram No</b>	<b>JL222177</b>	
<b>Simbool / Symbol</b>	<b>AA</b>	
Geboorte Status / Birth Status	1	
<b>Eienskap / Trait</b>	<b>VTW/EBV</b>	<b>Sim/Sym</b>
Lammers Gespeen / Lambs Weaned (%)	-0.2337	=
Speen Maternaal / Wean Maternal	-0.7996	x
Speen Direk / Wean Direct	2.1677	+
Liggaamsmassa / Body Weight 12 Mths	2.6767	+
Scoonvaqmassa / Clean Fleece Weight	0.2470	+
Veseldikte / Fibre Diameter	-0.2643	+
Algemene Meriete / General Merit	8.1400	+
<b>Moeder / Dam</b>	<b>JL190451</b>	
Parings - Lammers / Matings - Lambs	3	4
<b>Vaar / Sire</b>	<b>SD170256</b>	
Notas / Notes:		
Prys / Price:		

**ALL-IN-ONE CRUX**

<b>Lot Nr / Lot No</b>	<b>19</b>	
<b>Ram Nr / Ram No</b>	<b>JL222186</b>	
<b>Simbool / Symbol</b>	<b>AA</b>	
Geboorte Status / Birth Status	1	
<b>Eienskap / Trait</b>	<b>VTW/EBV</b>	<b>Sim/Sym</b>
Lammers Gespeen / Lambs Weaned (%)	-4.0208	x
Speen Maternaal / Wean Maternal	-0.3176	-
Speen Direk / Wean Direct	1.7562	+
Liggaamsmassa / Body Weight 12 Mths	2.5070	+
Scoonvaqmassa / Clean Fleece Weight	0.3032	+
Veseldikte / Fibre Diameter	0.1358	=
Algemene Meriete / General Merit	8.0700	+
<b>Moeder / Dam</b>	<b>JL191201</b>	
Parings - Lammers / Matings - Lambs	2	2
<b>Vaar / Sire</b>	<b>SD170256</b>	
Notas / Notes:		
Prys / Price:		

<b>Lot Nr / Lot No</b>	<b>20</b>	
<b>Ram Nr / Ram No</b>	<b>JL222203</b>	
<b>Simbool / Symbol</b>	<b>AA</b>	
Geboorte Status / Birth Status	2	
<b>Eienskap / Trait</b>	<b>VTW/EBV</b>	<b>Sim/Sym</b>
Lammers Gespeen / Lambs Weaned (%)	-3.1888	-
Speen Maternaal / Wean Maternal	-0.2821	-
Speen Direk / Wean Direct	1.6630	+
Liggaamsmassa / Body Weight 12 Mths	1.9865	+
Scoonvaqmassa / Clean Fleece Weight	0.2261	+
Veseldikte / Fibre Diameter	-0.4853	+
Algemene Meriete / General Merit	10.0600	+
<b>Moeder / Dam</b>	<b>JL181281</b>	
Parings - Lammers / Matings - Lambs	4	6
<b>Vaar / Sire</b>	<b>SD170256</b>	
Notas / Notes:		
Prys / Price:		

**ALL-IN-ONE CRUX**

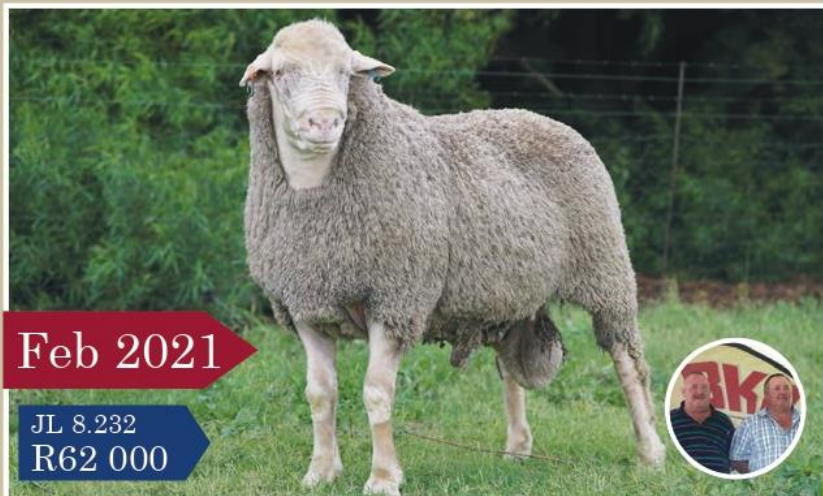
<b>Lot Nr / Lot No</b>	<b>21</b>	
<b>Ram Nr / Ram No</b>	<b>JL222209</b>	
<b>Simbool / Symbol</b>	<b>A</b>	
Geboorte Status / Birth Status	2	
<b>Eienskap / Trait</b>	<b>VTW/EBV</b>	<b>Sim/Sym</b>
Lammers Gespeen / Lambs Weaned (%)	-1.5113	-
Speen Maternaal / Wean Maternal	-0.3488	-
Speen Direk / Wean Direct	1.4594	+
Liggaamsmassa / Body Weight 12 Mths	2.0834	+
Scoonvaqmassa / Clean Fleece Weight	0.1823	+
Veseldikte / Fibre Diameter	0.1232	=
Algemene Meriete / General Merit	4.7800	=
<b>Moeder / Dam</b>	<b>JL160867</b>	
Parings - Lammers / Matings - Lambs	5	6
<b>Vaar / Sire</b>	<b>SD170256</b>	
Notas / Notes:		
Prys / Price:		

<b>Lot Nr / Lot No</b>	<b>22</b>	
<b>Ram Nr / Ram No</b>	<b>JL222230</b>	
<b>Simbool / Symbol</b>	<b>A</b>	
Geboorte Status / Birth Status	1	
<b>Eienskap / Trait</b>	<b>VTW/EBV</b>	<b>Sim/Sym</b>
Lammers Gespeen / Lambs Weaned (%)	-5.0255	x
Speen Maternaal / Wean Maternal	-0.4692	-
Speen Direk / Wean Direct	1.0642	=
Liggaamsmassa / Body Weight 12 Mths	1.6497	+
Scoonvaqmassa / Clean Fleece Weight	0.2518	+
Veseldikte / Fibre Diameter	0.8898	-
Algemene Meriete / General Merit	0.4500	-
<b>Moeder / Dam</b>	<b>JL182162</b>	
Parings - Lammers / Matings - Lambs	4	4
<b>Vaar / Sire</b>	<b>SD170256</b>	
Notas / Notes:		
Prys / Price:		

**ALL-IN-ONE CRUX**

<b>Lot Nr / Lot No</b>	<b>23</b>	
<b>Ram Nr / Ram No</b>	<b>JL222240</b>	
<b>Simbool / Symbol</b>	<b>A</b>	
Geboorte Status / Birth Status	1	
<b>Eienskap / Trait</b>	<b>VTW/EBV</b>	<b>Sim/Sym</b>
Lammers Gespeen / Lambs Weaned (%)	-0.8324	-
Speen Maternaal / Wean Maternal	-0.2869	-
Speen Direk / Wean Direct	3.8291	*
Liggaamsmassa / Body Weight 12 Mths	4.6822	*
Scoonvaqmassa / Clean Fleece Weight	0.0599	-
Veseldikte / Fibre Diameter	-0.3232	+
Algemene Meriete / General Merit	9.6900	+
<b>Moeder / Dam</b>	<b>JL190058</b>	
Parings - Lammers / Matings - Lambs	3	3
<b>Vaar / Sire</b>	<b>SD170256</b>	
Notas / Notes:		
Prys / Price:		

<b>Lot Nr / Lot No</b>	<b>24</b>	
<b>Ram Nr / Ram No</b>	<b>JL222287</b>	
<b>Simbool / Symbol</b>	<b>AA</b>	
Geboorte Status / Birth Status	1	
<b>Eienskap / Trait</b>	<b>VTW/EBV</b>	<b>Sim/Sym</b>
Lammers Gespeen / Lambs Weaned (%)	-0.1781	=
Speen Maternaal / Wean Maternal	-0.5625	-
Speen Direk / Wean Direct	2.2185	+
Liggaamsmassa / Body Weight 12 Mths	3.7728	*
Scoonvaqmassa / Clean Fleece Weight	0.3736	*
Veseldikte / Fibre Diameter	0.0097	+
Algemene Meriete / General Merit	10.3200	+
<b>Moeder / Dam</b>	<b>JL180808</b>	
Parings - Lammers / Matings - Lambs	4	5
<b>Vaar / Sire</b>	<b>SD170256</b>	
Notas / Notes:		
Prys / Price:		



Feb 2021

JL 8.232  
R62 000



Feb 2021

JL 8.2182  
R70 000



Feb 2021

JL 8.959  
R75 000



**ALL-IN-ONE CRUX**

<b>Lot Nr / Lot No</b>	<b>25</b>	
<b>Ram Nr / Ram No</b>	<b>JL222300</b>	
<b>Simbool / Symbol</b>	<b>AA</b>	
Geboorte Status / Birth Status	3	
<b>Eienskap / Trait</b>	<b>VTW/EBV</b>	<b>Sim/Sym</b>
Lammers Gespeen / Lambs Weaned (%)	0.4100	+
Speen Maternaal / Wean Maternal	-0.0059	=
Speen Direk / Wean Direct	2.5964	*
Liggaamsmassa / Body Weight 12 Mths	3.9843	*
Scoonvaqmassa / Clean Fleece Weight	0.2504	+
Veseldikte / Fibre Diameter	0.5357	-
Algemene Meriete / General Merit	7.4000	+
<b>Moeder / Dam</b>	<b>JL190084</b>	
Parings - Lammers / Matings - Lambs	3	5
<b>Vaar / Sire</b>	<b>SD170256</b>	
Notas / Notes:		
Prys / Price:		

<b>Lot Nr / Lot No</b>	<b>26</b>	
<b>Ram Nr / Ram No</b>	<b>JL222307</b>	
<b>Simbool / Symbol</b>	<b>A</b>	
Geboorte Status / Birth Status	1	
<b>Eienskap / Trait</b>	<b>VTW/EBV</b>	<b>Sim/Sym</b>
Lammers Gespeen / Lambs Weaned (%)	-3.2568	-
Speen Maternaal / Wean Maternal	-0.2067	-
Speen Direk / Wean Direct	1.8393	+
Liggaamsmassa / Body Weight 12 Mths	1.7028	+
Scoonvaqmassa / Clean Fleece Weight	0.1851	+
Veseldikte / Fibre Diameter	0.2284	=
Algemene Meriete / General Merit	5.5200	=
<b>Moeder / Dam</b>	<b>JL170100</b>	
Parings - Lammers / Matings - Lambs	4	6
<b>Vaar / Sire</b>	<b>SD170256</b>	
Notas / Notes:		
Prys / Price:		

**ALL-IN-ONE CRUX**

<b>Lot Nr / Lot No</b>	<b>27</b>	
<b>Ram Nr / Ram No</b>	<b>JL222310</b>	
<b>Simbool / Symbol</b>	<b>AA</b>	
Geboorte Status / Birth Status	1	
<b>Eienskap / Trait</b>	<b>VTW/EBV</b>	<b>Sim/Sym</b>
Lammers Gespeen / Lambs Weaned (%)	-0.0797	=
Speen Maternaal / Wean Maternal	-0.2307	-
Speen Direk / Wean Direct	2.4767	*
Liggaamsmassa / Body Weight 12 Mths	3.9119	*
Scoonvaqmassa / Clean Fleece Weight	0.1993	+
Veseldikte / Fibre Diameter	0.1229	=
Algemene Meriete / General Merit	7.6300	+
<b>Moeder / Dam</b>	<b>JL180835</b>	
Parings - Lammers / Matings - Lambs	4	6
<b>Vaar / Sire</b>	<b>SD170256</b>	
Notas / Notes:		
Prys / Price:		

<b>Lot Nr / Lot No</b>	<b>28</b>	
<b>Ram Nr / Ram No</b>	<b>JL222348</b>	
<b>Simbool / Symbol</b>	<b>AA</b>	
Geboorte Status / Birth Status	2	
<b>Eienskap / Trait</b>	<b>VTW/EBV</b>	<b>Sim/Sym</b>
Lammers Gespeen / Lambs Weaned (%)	-2.9704	-
Speen Maternaal / Wean Maternal	-0.7509	-
Speen Direk / Wean Direct	2.0003	+
Liggaamsmassa / Body Weight 12 Mths	2.2101	+
Scoonvaqmassa / Clean Fleece Weight	0.5500	*
Veseldikte / Fibre Diameter	-0.6720	*
Algemene Meriete / General Merit	17.1200	*
<b>Moeder / Dam</b>	<b>JL193075</b>	
Parings - Lammers / Matings - Lambs	3	4
<b>Vaar / Sire</b>	<b>SD170256</b>	
Notas / Notes:		
Prys / Price:		



**ALL-IN-ONE CRUX**

<b>Lot Nr / Lot No</b>	<b>29</b>	
<b>Ram Nr / Ram No</b>	<b>JL222360</b>	
<b>Simbool / Symbol</b>	<b>A</b>	
Geboorte Status / Birth Status	1	
<b>Eienskap / Trait</b>	<b>VTW/EBV</b>	<b>Sim/Sym</b>
Lammers Gespeen / Lambs Weaned (%)	1.7893	+
Speen Maternaal / Wean Maternal	-0.2719	-
Speen Direk / Wean Direct	0.9752	=
Liggaamsmassa / Body Weight 12 Mths	2.2932	+
Scoonvaqmassa / Clean Fleece Weight	0.2205	+
Veseldikte / Fibre Diameter	0.8670	-
Algemene Meriete / General Merit	0.5000	-
<b>Moeder / Dam</b>	<b>JL170222</b>	
Parings - Lammers / Matings - Lambs	4	7
<b>Vaar / Sire</b>	<b>SD170256</b>	
Notas / Notes:		
Prys / Price:		

<b>Lot Nr / Lot No</b>	<b>30</b>	
<b>Ram Nr / Ram No</b>	<b>JL222368</b>	
<b>Simbool / Symbol</b>	<b>A</b>	
Geboorte Status / Birth Status	1	
<b>Eienskap / Trait</b>	<b>VTW/EBV</b>	<b>Sim/Sym</b>
Lammers Gespeen / Lambs Weaned (%)	-1.3408	-
Speen Maternaal / Wean Maternal	-0.0546	=
Speen Direk / Wean Direct	1.7492	+
Liggaamsmassa / Body Weight 12 Mths	2.0114	+
Scoonvaqmassa / Clean Fleece Weight	0.1488	=
Veseldikte / Fibre Diameter	0.4803	-
Algemene Meriete / General Merit	3.6300	=
<b>Moeder / Dam</b>	<b>JL200188</b>	
Parings - Lammers / Matings - Lambs	2	2
<b>Vaar / Sire</b>	<b>SD170256</b>	
Notas / Notes:		
Prys / Price:		

**ALL-IN-ONE CRUX**

<b>Lot Nr / Lot No</b>	<b>31</b>	
<b>Ram Nr / Ram No</b>	<b>JL222382</b>	
<b>Simbool / Symbol</b>	<b>A</b>	
Geboorte Status / Birth Status	1	
<b>Eienskap / Trait</b>	<b>VTW/EBV</b>	<b>Sim/Sym</b>
Lammers Gespeen / Lambs Weaned (%)	-4.7854	x
Speen Maternaal / Wean Maternal	-0.2853	-
Speen Direk / Wean Direct	1.3261	+
Liggaamsmassa / Body Weight 12 Mths	2.1170	+
Scoonvaqmassa / Clean Fleece Weight	0.0294	-
Veseldikte / Fibre Diameter	0.2306	=
Algemene Meriete / General Merit	0.7500	-
<b>Moeder / Dam</b>	<b>JL172105</b>	
Parings - Lammers / Matings - Lambs	4	4
<b>Vaar / Sire</b>	<b>SD170256</b>	
Notas / Notes:		
Prys / Price:		

<b>Lot Nr / Lot No</b>	<b>32</b>	
<b>Ram Nr / Ram No</b>	<b>JL222393</b>	
<b>Simbool / Symbol</b>	<b>AA</b>	
Geboorte Status / Birth Status	1	
<b>Eienskap / Trait</b>	<b>VTW/EBV</b>	<b>Sim/Sym</b>
Lammers Gespeen / Lambs Weaned (%)	-2.6553	-
Speen Maternaal / Wean Maternal	-0.3441	-
Speen Direk / Wean Direct	1.6358	+
Liggaamsmassa / Body Weight 12 Mths	1.8310	+
Scoonvaqmassa / Clean Fleece Weight	0.2460	+
Veseldikte / Fibre Diameter	-0.3972	+
Algemene Meriete / General Merit	9.6700	+
<b>Moeder / Dam</b>	<b>JL193248</b>	
Parings - Lammers / Matings - Lambs	3	4
<b>Vaar / Sire</b>	<b>SD170256</b>	
Notas / Notes:		
Prys / Price:		

**ALL-IN-ONE CRUX**

<b>Lot Nr / Lot No</b>	<b>33</b>	
<b>Ram Nr / Ram No</b>	<b>JL222410</b>	
<b>Simbool / Symbol</b>	<b>AA</b>	
Geboorte Status / Birth Status	1	
<b>Eienskap / Trait</b>	<b>VTW/EBV</b>	<b>Sim/Sym</b>
Lammers Gespeen / Lambs Weaned (%)	-1.2196	-
Speen Maternaal / Wean Maternal	-0.1748	-
Speen Direk / Wean Direct	0.8481	=
Liggaamsmassa / Body Weight 12 Mths	1.6703	+
Scoonvaqmassa / Clean Fleece Weight	0.3490	*
Veseldikte / Fibre Diameter	0.3724	=
Algemene Meriete / General Merit	6.4300	=
<b>Moeder / Dam</b>	<b>JL181110</b>	
Parings - Lammers / Matings - Lambs	4	4
<b>Vaar / Sire</b>	<b>SD170256</b>	
Notas / Notes:		
Prys / Price:		

<b>Lot Nr / Lot No</b>	<b>34</b>	
<b>Ram Nr / Ram No</b>	<b>JL222411</b>	
<b>Simbool / Symbol</b>	<b>A</b>	
Geboorte Status / Birth Status	1	
<b>Eienskap / Trait</b>	<b>VTW/EBV</b>	<b>Sim/Sym</b>
Lammers Gespeen / Lambs Weaned (%)	-2.9083	-
Speen Maternaal / Wean Maternal	-0.6209	-
Speen Direk / Wean Direct	1.8356	+
Liggaamsmassa / Body Weight 12 Mths	2.3220	+
Scoonvaqmassa / Clean Fleece Weight	0.1955	+
Veseldikte / Fibre Diameter	0.1464	=
Algemene Meriete / General Merit	4.6000	=
<b>Moeder / Dam</b>	<b>JL170366</b>	
Parings - Lammers / Matings - Lambs	4	5
<b>Vaar / Sire</b>	<b>SD170256</b>	
Notas / Notes:		
Prys / Price:		



Feb 2022

JL 9.1230  
R85 000



Okt 2022

JL 0.3370  
R37 000



Feb 2023

JL 0.234  
R47 000

**ALL-IN-ONE CRUX**

<b>Lot Nr / Lot No</b>	<b>35</b>	
<b>Ram Nr / Ram No</b>	<b>JL222413</b>	
<b>Simbool / Symbol</b>	<b>AA</b>	
Geboorte Status / Birth Status	1	
<b>Eienskap / Trait</b>	<b>VTW/EBV</b>	<b>Sim/Sym</b>
Lammers Gespeen / Lambs Weaned (%)	-1.1374	-
Speen Maternaal / Wean Maternal	0.1162	=
Speen Direk / Wean Direct	2.4328	+
Liggaamsmassa / Body Weight 12 Mths	2.9007	+
Scoonvaqmassa / Clean Fleece Weight	0.0382	-
Veseldikte / Fibre Diameter	-0.5194	+
Algemene Meriete / General Merit	9.2200	+
<b>Moeder / Dam</b>	<b>JL200158</b>	
Parings - Lammers / Matings - Lambs	2	3
<b>Vaar / Sire</b>	<b>SD170256</b>	
Notas / Notes:		
Prys / Price:		

<b>Lot Nr / Lot No</b>	<b>36</b>	
<b>Ram Nr / Ram No</b>	<b>JL222418</b>	
<b>Simbool / Symbol</b>	<b>AA</b>	
Geboorte Status / Birth Status	2	
<b>Eienskap / Trait</b>	<b>VTW/EBV</b>	<b>Sim/Sym</b>
Lammers Gespeen / Lambs Weaned (%)	0.2296	=
Speen Maternaal / Wean Maternal	-0.7802	x
Speen Direk / Wean Direct	1.0135	=
Liggaamsmassa / Body Weight 12 Mths	1.6538	+
Scoonvaqmassa / Clean Fleece Weight	0.1610	+
Veseldikte / Fibre Diameter	-0.8015	*
Algemene Meriete / General Merit	7.2700	+
<b>Moeder / Dam</b>	<b>JL172009</b>	
Parings - Lammers / Matings - Lambs	4	7
<b>Vaar / Sire</b>	<b>SD170256</b>	
Notas / Notes:		
Prys / Price:		

**ALL-IN-ONE CRUX**

<b>Lot Nr / Lot No</b>	<b>37</b>	
<b>Ram Nr / Ram No</b>	<b>JL222438</b>	
<b>Simbool / Symbol</b>	<b>AA</b>	
Geboorte Status / Birth Status	1	
<b>Eienskap / Trait</b>	<b>VTW/EBV</b>	<b>Sim/Sym</b>
Lammers Gespeen / Lambs Weaned (%)	-1.5069	-
Speen Maternaal / Wean Maternal	-0.0406	=
Speen Direk / Wean Direct	1.4053	+
Liggaamsmassa / Body Weight 12 Mths	1.8833	+
Scoonvaqmassa / Clean Fleece Weight	0.2194	+
Veseldikte / Fibre Diameter	-0.1767	+
Algemene Meriete / General Merit	8.5000	+
<b>Moeder / Dam</b>	<b>JL173314</b>	
Parings - Lammers / Matings - Lambs	4	6
<b>Vaar / Sire</b>	<b>SD170256</b>	
Notas / Notes:		
Prys / Price:		

<b>Lot Nr / Lot No</b>	<b>38</b>	
<b>Ram Nr / Ram No</b>	<b>JL222446</b>	
<b>Simbool / Symbol</b>	<b>A</b>	
Geboorte Status / Birth Status	1	
<b>Eienskap / Trait</b>	<b>VTW/EBV</b>	<b>Sim/Sym</b>
Lammers Gespeen / Lambs Weaned (%)	-4.8052	x
Speen Maternaal / Wean Maternal	-0.3871	-
Speen Direk / Wean Direct	0.8080	=
Liggaamsmassa / Body Weight 12 Mths	1.8966	+
Scoonvaqmassa / Clean Fleece Weight	0.2490	+
Veseldikte / Fibre Diameter	0.4038	-
Algemene Meriete / General Merit	3.1200	=
<b>Moeder / Dam</b>	<b>JL191342</b>	
Parings - Lammers / Matings - Lambs	3	3
<b>Vaar / Sire</b>	<b>SD170256</b>	
Notas / Notes:		
Prys / Price:		

**ALL-IN-ONE CRUX**

<b>Lot Nr / Lot No</b>	<b>39</b>	
<b>Ram Nr / Ram No</b>	<b>JL222464</b>	
<b>Simbool / Symbol</b>	<b>AA</b>	
Geboorte Status / Birth Status	1	
<b>Eienskap / Trait</b>	<b>VTW/EBV</b>	<b>Sim/Sym</b>
Lammers Gespeen / Lambs Weaned (%)	-0.3430	=
Speen Maternaal / Wean Maternal	-0.5834	-
Speen Direk / Wean Direct	2.0573	+
Liggaamsmassa / Body Weight 12 Mths	2.5413	+
Scoonvaqmassa / Clean Fleece Weight	0.4470	*
Veseldikte / Fibre Diameter	0.6566	-
Algemene Meriete / General Merit	7.6500	+
<b>Moeder / Dam</b>	<b>JL190315</b>	
Parings - Lammers / Matings - Lambs	2	2
<b>Vaar / Sire</b>	<b>SD170256</b>	
Notas / Notes:		
Prys / Price:		

<b>Lot Nr / Lot No</b>	<b>40</b>	
<b>Ram Nr / Ram No</b>	<b>JL222468</b>	
<b>Simbool / Symbol</b>	<b>AA</b>	
Geboorte Status / Birth Status	2	
<b>Eienskap / Trait</b>	<b>VTW/EBV</b>	<b>Sim/Sym</b>
Lammers Gespeen / Lambs Weaned (%)	-2.1080	-
Speen Maternaal / Wean Maternal	-0.3521	-
Speen Direk / Wean Direct	3.4930	*
Liggaamsmassa / Body Weight 12 Mths	4.4547	*
Scoonvaqmassa / Clean Fleece Weight	0.3748	*
Veseldikte / Fibre Diameter	0.9138	-
Algemene Meriete / General Merit	8.2700	+
<b>Moeder / Dam</b>	<b>JL200490</b>	
Parings - Lammers / Matings - Lambs	1	2
<b>Vaar / Sire</b>	<b>SD170256</b>	
Notas / Notes:		
Prys / Price:		

**ALL-IN-ONE CRUX**

<b>Lot Nr / Lot No</b>	<b>41</b>	
<b>Ram Nr / Ram No</b>	<b>JL222481</b>	
<b>Simbool / Symbol</b>	<b>AA</b>	
Geboorte Status / Birth Status	2	
<b>Eienskap / Trait</b>	<b>VTW/EBV</b>	<b>Sim/Sym</b>
Lammers Gespeen / Lambs Weaned (%)	-3.5873	-
Speen Maternaal / Wean Maternal	-0.0027	=
Speen Direk / Wean Direct	1.7818	+
Liggaamsmassa / Body Weight 12 Mths	1.7501	+
Scoonvaqmassa / Clean Fleece Weight	0.1327	=
Veseldikte / Fibre Diameter	-0.2237	+
Algemene Meriete / General Merit	7.7700	+
<b>Moeder / Dam</b>	<b>JL170031</b>	
Parings - Lammers / Matings - Lambs	4	5
<b>Vaar / Sire</b>	<b>SD170256</b>	
Notas / Notes:		
Prys / Price:		

<b>Lot Nr / Lot No</b>	<b>42</b>	
<b>Ram Nr / Ram No</b>	<b>JL222492</b>	
<b>Simbool / Symbol</b>	<b>AA</b>	
Geboorte Status / Birth Status	1	
<b>Eienskap / Trait</b>	<b>VTW/EBV</b>	<b>Sim/Sym</b>
Lammers Gespeen / Lambs Weaned (%)	1.0485	+
Speen Maternaal / Wean Maternal	-0.6194	-
Speen Direk / Wean Direct	3.4201	*
Liggaamsmassa / Body Weight 12 Mths	5.2932	*
Scoonvaqmassa / Clean Fleece Weight	0.3650	*
Veseldikte / Fibre Diameter	-0.0851	+
Algemene Meriete / General Merit	12.8500	+
<b>Moeder / Dam</b>	<b>JL200151</b>	
Parings - Lammers / Matings - Lambs	2	5
<b>Vaar / Sire</b>	<b>SD170256</b>	
Notas / Notes:		
Prys / Price:		



# SERVICE EXCELLENCE

At BKB we value the importance of trust. Trusting that the rains will return and that the land will produce for those who nurture it. Knowing that trust cannot be bought, but rather earned over time through our actions and our commitment to you, through the good times and bad. We take pride in the relationships we have built with generations of clients, each underpinned by integrity and bound through a look in the eye and the shake of a hand.

[WWW.BKB.CO.ZA](http://WWW.BKB.CO.ZA)

## **BKB**

The Trusted Home of Agriculture  
Die Betroubare Tuiste van Landbou



To scan, download  
a free QR Code app

*#SustainabilitySynergised*

PEOPLE | PLANET | PROFIT

SERVICE EXCELLENCE | ENTREPRENEURSHIP | EARNINGS | EMPLOYEES | ENVIRONMENT

*#IntegrityIntegrated*