

OHRIGSTAD VEILING GPS: S24°41'41.04" E30°40'23.79"

Estment Farming (Pty) Ltd

BRONRICH BONSMARA PRODUKSIEVEILING

Dinsdag | 21 Mei 2024 | 11:00

Bronrich | Ohrigstad



LES 21-023

Les Schulze
082 495 3062
087 806 3254
Richard Schulze
063 257 7782
bronrich@estmentfarming.co.za
richard@estmentfarming.co.za

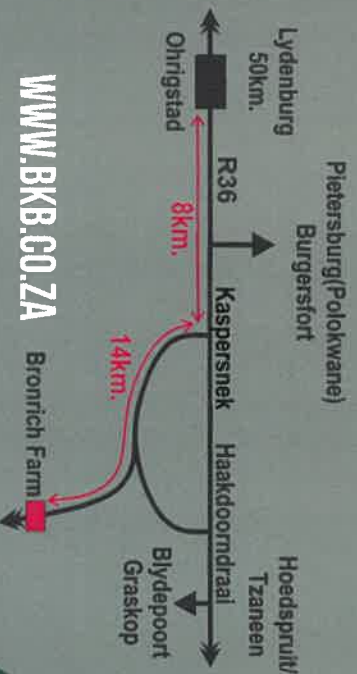


AFSLAERS:
BKB LIMITED
61 GRAHAMSTOWN RD, NORTHEND,
PORT ELIZABETH, 6001
BTW NR.: 4100/101338
REG NR.: 1998/012435/06

NAVRAE:
ROOJD VAN ROOYEN 082 799 2776
MOOLMAN MENTZ 083 229 2500
AFSLAER: BILLY LYONS 082 785 5498
BKB, ERMELO: 017 811 2027

AANBOD:
15 Bulle,
40 Vroulike diere.

Nota: Diere loop op strawwe Rooiwater, Galsiek en Hartwater veld.
Dragtigheidsstatus en katalogus inligting sal dag van veiling beskikbaar wees.



WWW.BKB.CO.ZA

BKB

The Trusted Home of Agriculture
Die Betroubare Tuiste van Landbou



BKB

heet u welkom by

Estment Farming (Pty) Ltd Bronrich Bonsmara Produksieveiling

21 Mei 2024

te

Bronrich, Ohrigstad

GENIET DIE DAG SAAM MET ONS!

AMPTELIKE VEILINGSKATALOGUS VIR / OFFICIAL AUCTION CATALOGUE FOR

ESTMENT FARMING - BRONRICH

Veilingsdatum / Auction Date:
21 May 2024

Data soos op / Data as on:
08 May 2024



SALES UNDER AUSPICES OF BONSMARA SA

Bonsmara stud breeding is subject to the stipulations of the Livestock Improvement Act and conforms to the standards of Bonsmara SA. The Society therefore has the right to implement certain controls to ensure the accuracy of information regarding Parentage, Performance and Estimated Breeding Values.

Information regarding Parentage, Performance and Estimated Breeding Values of animals, as supplied by the breeder, have been verified and compared to the official database of LOGIX BEEF. Bonsmara SA therefore, confirms the accuracy of such information.

To the knowledge of the Society these controls have been carried out accurately. However, the Society does not take any responsibility for incorrect information through printing errors or incorrect information provided by the breeder.

Animals on such sales have been visually screened by Inspectors of Bonsmara SA and comply with the Bonsmara Minimum Breed Standards as stipulated by the Society.

The Society DOES NOT have any control over:

- Immunization and health status of animals
- Pregnancy status of cows and heifers
- Suitability of a bull for breeding
- Fertility status as well as venereal diseases and
- Commercial animals

Since the above is not classified as information regarding Parentage, Performance and Estimated Breeding Values, it DOES NOT fall within the jurisdiction of the meaning "Under the Auspices of Bonsmara SA".



VEILINGS ONDER BESKERMING VAN BONSMARA SA

Bonsmara stoetteling wat onderhewig is aan die bepalings van die Veeverbeteringswet, vind plaas onder die vaandel van Bonsmara SA. Daarom behou die Genootskap hom die reg voor om kontroles volgens bepaalde prosedures uit te oefen ten opsigte van Ouerskap inligting, Prestasiedata en Beraamde Teelwaardes.

Ouerskap inligting, Prestasiedata en Beraamde Teelwaardes soos deur die teler voorsien vir die doel van hierdie katalogus, is gekontroleer en vergelyk met die amptelike databasis soos gehou deur LOGIX BEEF. Bonsmara SA bevestig dus die korrektheid van sodanige inligting.

Alhoewel die kontroles na die beste wete van die Genootskap gedoen is, kan die Genootskap egter nie verantwoordelik gehou word vir foutiewe inligting as gevolg van drukkersfoute of verkeerde inligting deur die telers verskaf nie.

Diere wat op hierdie veilings aangebied word, is onderwerp aan 'n proses van visuele inspeksie deur Keurders van Bonsmara SA en voldoen aan die Bonsmara Minimum Rasstandaarde soos bepaal deur die Genootskap.

Die Genootskap het egter GEEN beheer oor:

- Immunisering en gezondheidstatus van diere
- Dragtigheidsstatus van koeie en verse
- Teelgeskiktheid van bulle
- Vrugbaarheidstatus, asook geslagsiektes en
- Kommersiële diere nie.

Aangesien bogenoemde nie val onder die bedoeling met Ouerskap inligting, Prestasiedata en Beraamde Teelwaardes nie, sorteer dit NIE onder die jurisdiksie van die bedoeling "Onder beskerming van Bonsmara SA" nie.



ANIMAL AND PEDIGREE INFORMATION

LOT 1 1 THE RED CATTLE FARM 2

3

ABC 150029 4

2015-02-03 5
SP 6

Parentage Sire Dam

DNA

Genomic

DEF 100066 P

ABC 080011

AGE/CALV. 13/9
AVG. Wt/CALV. 105/9
ICP 417

7 DEF 050022

8 GHI 070076 HH(c)

AGE/CALV. 14/10
AVG. Wt/CALV. 92/10
ICP 395

9

JKL 000077 P

12 MNO 030002

AGE/CALV. 19/10
AVG. Wt/CALV. 109/10
ICP 407

1. Lot Number
2. Owner of the animal
3. Herd's logo (if available)
4. Animal Identification Number
5. Birth date
6. Herd book section - NFR / PEN / F0 / A / B / SP
7. Four (4) generation pedigree
8. Genomic testing - it is indicated with the GT logo
9. Polled Status - the status will only be printed for animals that have been tested
10. Parentage Verification - a green tick (✓) indicates that the sire and/or dam has been verified via either microsatellite (DNA), or Genomic testing
11. QR Code - This code can be scanned with a smart device. It redirects to the animal's information on www.SABeefBulls.com where all information for the animal is available.
12. Dam information
 - Age and Number of Calvings
 - Average Wean Index and Number of Calves Weaned
 - Intercalving Period

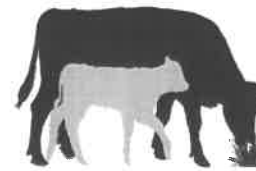
MYOSTATIN STATUS

The animal's status, if tested for myostatin variants, is indicated as follows:

- Not Tested
- 0 - Normal
- 1 - Heterozygous / Carrier of Double-Muscling gene
- 2 - Homozygous / Double-Musclled

LOGIX SELECTION VALUES

Calving Ease Value	Weaner Calf Value	Fertility Value	Maintenance Value	Cow Value	Growth Value	Carcass Value
109	98	111	99	101	98	103
1	2	3	4	5	6	7



5 L♀ GIX Cow Value

Selection of:

- Fertile cows,
- with low maintenance,
- that calf easily,
- and wean heavy calves

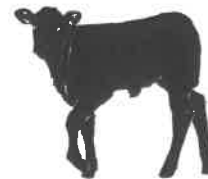
1 Calving Ease Value EBVs Birth Direct & Maternal

Calf Growth Value EBV Wean Direct

3 Fertility Value EBVs Cow & Heifer Fertility, EBV Longevity

Milk Value EBV Wean Maternal

4 Maintenance Value EBVs Mature weight & Milk



2 L♀ GIX Weaner Calf Value

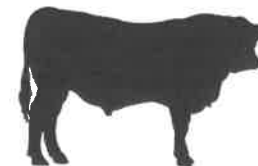
Selection of:

- Heavier weaning weights,
- with more milk,
- but restricted birth weight



7 L♀ GIX Carcass Value

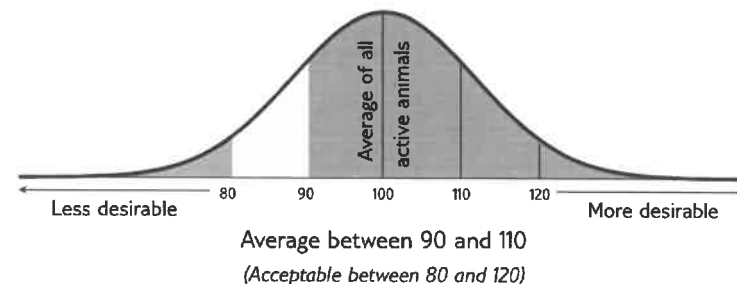
Selection for higher meat yield on carcass



6 L♀ GIX Growth Value

Selection of efficient growers on veld & in the feedlot

INTERPRETATION OF BREEDING VALUE INDICES



EXPLANATION OF BREEDING VALUES AND SELECTION VALUES

Traits	Description/Measurement	Goal	General Guidelines					
			<-80	<-90	90-110	>110	>120	
Selection Values	5 Cow Value CV	Combination of Calving Ease, Calf Growth, Milk, Maintenance and Fertility Values (Rand-Value)	Profitable Cow	Loss				Profit
	1 Calving Ease Value CEV	Risk for calving problems (calf too heavy) vs calf too small	Average birth weight	High				Low
	Calf Growth Value CGrV	Calf's genetic ability for pre-weaning growth	Heavy weaner calf	Light				Heavy
	Milk Value MlKV	Cow's genetic mothering and milking ability	Enough milk for the calf	Less				More
	4 Maintenance Value MntV	Maintenance requirements of cow (cow weight and milk)	Low cow maintenance	High			*	Low
	3 Fertility Value FertV	Fertility and retention of cows and heifers	Fertile cows	Low				High
	2 Weaner Calf Value WnCV	Combination of calf's weight and cow's milk	Heavy weaner calves	Light				Heavy
	6 Growth Value GV	Efficient growth on veld and in feedlot (Rand-value)	Profitable growth	Loss				Profit
7 Carcass Value VarcV	Meat on carcass (Weight and RTU EBVs)	More meat on the carcass	Less				More	
Production Value PV	Combination of Cow- and Growth values (Rand-value)	Profitable animals	Loss				Profit	
Cow & Heifer	8 Birth Weight Direct BD	Birth weight (Calf's genetic ability)	Average birth weight	Heavy				Light
	Birth Weight Maternal BM	Birth weight (Cow's genetic ability)	Easy calving	Heavy				Light
	9 Weaning Weight Direct WD	Weaning weight (Calf's genetic ability)	Heavy weaner calves	Light				Heavy
	10 Weaning Weight Maternal WM	Weaning weight (Cow's genetic ability)	Good mothers	Poor				Good
	18 Mature Cow Weight MW	Cow weight at weaning of first three calves	Average mature cow weight	Light		*	*	Heavy
Cow-Calf Birth CCB	EBV Birth Direct / EBV Mature Cow weight	Average	Low				High	
Cow-Calf Wean CCW	EBV Wean Direct / EBV Mature Cow weight	High calf-cow ratio	Low				High	
Fertility	12 Heifer Fertility HF	Age at first calving	Fertile heifers	Less				More
	13 Cow Fertility CFE	First 3 inter-calving periods (ICPs)	Fertile cows	Less				More
	11 Scrotal Circumference SC	Scrotal circumference as measured during the growth test	Fertile bulls	Less				More
	14 Longevity LG	Retention of progeny	Acceptable progeny	Poor				Good
Growth & Frame	15 Post-Wean Weight PWn	12- and 18 month weights	Good post-wean growth	Low			*	High
	16 Average Daily Gain ADG	Average daily gain	Good growth	Poor				Good
	17 Feed Conversion Ratio FCR	100g feed intake / g weight gain	Feed efficiency	Poor				Good
	Final Test Weight FW	Final weight in the growth test	Heavy carcass	Light			*	Heavy
	19 Height H	Shoulder / Hip height in growth test	Average height	Short				Tall
	20 Length L	Length in growth test	Longer for more muscle	Short				Long
24 Length-Height Ratio LH	EBV Length / EBV Height	Longer rather than tall	<1				>1	
Carcass	21 Eye Muscle Area EMA	RTU measured eye muscle area	Bigger steaks	Small				Big
	22 Fat Thickness Fat	RTU measured P8 backfat thickness	Carcass quality	Thin				Thick
	23 Marbling Mar	RTU measured % of intra-muscular fat	Juicy meat	Low				High
	Dressing Percentage D%	Carcass weight / Live weight	High dressing percentage	Low				High

* Determined by own selection goal

GENETIC VALUES - BUILDING BLOCKS

Calf and Mother			Fertility				Post-Wean Growth			Frame			Carcass		
Birth Dir.	Wean Dir.	Wean Mat.	Scrot. Circ.	Heifer Fert.	Cow Fert.	Longev.	Post Wean.	ADG	FCR	Mature Weight	Height	Length	EMA	Fat	Mar.
99	99	90	97	75	92	85	100	94	93	92	123	110	104	100	79
8	9	10	11	12	13	14	15	16	17	18	19	20	21	22	23

PHENOTYPIC VALUES

Wean Index	365D Index	540D Index	ADG Index	FCR Index	Scrotum	LH
109	104	105	122	117	327	1.22
			16	17	11	24

The Logix Selection Values are compiled of specific genetic building blocks, as indicated in the selection value descriptions on the previous page. These genetic building blocks are indicated in the catalogue by their Breeding Value Indices.

- Wean, 365D, 540D, ADG and FCR Indices - phenotypic index obtained within the animal's contemporary group
- Scrotum - adjusted scrotal circumference, in mm, as measured during the growth test
- Length-Height Ratio (LH) - the animal's length / height ratio as measured during the growth test



BULLS

LOT 1 ESTMENT FARMING PTY LTD

LES 210020
2021-08-12 SP

Parentage Sire Dam

DNA

Genomic

LES 180029

LES 150047

LES 070048
AGE/CALV. 13/11
AVG. WJ/CALV. 96/9
ICP 369

LES 090025

LES 090078
AGE/CALV. 13/9
AVG. WJ/CALV. 105/8
ICP 507

LES 120038

LES 100038
AGE/CALV. 11/6
AVG. WJ/CALV. 104/5

LES 050013

LES 030059
AGE/CALV. 15/10
AVG. WJ/CALV. 100/10

AG 050137

LES 060012
AGE/CALV. 15/9
AVG. WJ/CALV. 98/9

LES 070007

LES 010010
AGE/CALV. 13/9
AVG. WJ/CALV. 101/9

Calving Ease Value 80	Weaner Calf Value 110	Fertility Value 107	Maintenance Value 100	Cow Value 107	Growth Value 100	Carcass Value 108
---------------------------------	---------------------------------	-------------------------------	---------------------------------	-------------------------	----------------------------	-----------------------------

Calf and Mother			Fertility				Post-Wean Growth			Frame			Carcass		
Birth Dir.	Wean Dir.	Wean Mat.	Scr. Circ.	Heifer Fert.	Cow Fert.	Longev.	Post Wean	ADG	FCR	Mature Weight	Height	Length	EMA	Fat	Mar
79	116	98	115	102	106	107	115	102	98	98	97	110	116	92	97

Wean Index	365D Index	540D Index	ADG Index	FCR Index	Scrotum	LH
103	-	-	107	-	355	1.29

Myostatin	
Q204X	1
NT821	0
F94L	0

REMARKS:

LOGIX EBV Analysis: 2024-04-21

LOT 2 ESTMENT FARMING PTY LTD

LES 210023
2021-08-15 SP

Parentage Sire Dam

DNA

Genomic

LES 180069

LES 150084

LES 150065
AGE/CALV. 4/1
AVG. WJ/CALV. 108/1
ICP -

LES 150047

LES 120058
AGE/CALV. 11/7
AVG. WJ/CALV. 100/7
ICP 481

LES 120051

LES 120021
AGE/CALV. 11/8
AVG. WJ/CALV. 104/7

LES 120013

LES 120064
AGE/CALV. 4/2
AVG. WJ/CALV. 110/1

LES 120038

LES 100038
AGE/CALV. 11/6
AVG. WJ/CALV. 104/5

LES 090023

LES 060037
AGE/CALV. 14/0
AVG. WJ/CALV. 101/0

Calving Ease Value 109	Weaner Calf Value 91	Fertility Value 104	Maintenance Value 101	Cow Value 97	Growth Value 87	Carcass Value 89
----------------------------------	--------------------------------	-------------------------------	---------------------------------	------------------------	---------------------------	----------------------------

Calf and Mother			Fertility				Post-Wean Growth			Frame			Carcass		
Birth Dir.	Wean Dir.	Wean Mat.	Scr. Circ.	Heifer Fert.	Cow Fert.	Longev.	Post Wean	ADG	FCR	Mature Weight	Height	Length	EMA	Fat	Mar
108	93	92	88	102	105	101	91	80	75	97	69	89	92	103	108

Wean Index	365D Index	540D Index	ADG Index	FCR Index	Scrotum	LH
100	-	-	98	-	314	1.31

Myostatin	
Q204X	1
NT821	0
F94L	0

REMARKS:

LOGIX EBV Analysis: 2024-04-21

LOT 3 ESTMENT FARMING PTY LTD

LES 200002
2020-06-29 SP

Parentage Sire Dam

DNA

Genomic

LES 170051

LES 140044

LES 090084
AGE/CALV. 12/8
AVG. WJ/CALV. 100/8
ICP 458

LES 080019

LES 030044
AGE/CALV. 9/4
AVG. WJ/CALV. 106/4
ICP 501

LES 110042

LES 060061
AGE/CALV. 17/12
AVG. WJ/CALV. 104/12

AG 050137

LAR 040151
AGE/CALV. 17/11
AVG. WJ/CALV. 99/11

LES 050023

LES 010046
AGE/CALV. 16/12
AVG. WJ/CALV. 99/10

LES 980145

LES 010018
AGE/CALV. 10/6
AVG. WJ/CALV. 96/6

Calving Ease Value 95	Weaner Calf Value 109	Fertility Value 100	Maintenance Value 96	Cow Value 106	Growth Value 112	Carcass Value 108
---------------------------------	---------------------------------	-------------------------------	--------------------------------	-------------------------	----------------------------	-----------------------------

Calf and Mother			Fertility				Post-Wean Growth			Frame			Carcass		
Birth Dir.	Wean Dir.	Wean Mat.	Scr. Circ.	Heifer Fert.	Cow Fert.	Longev.	Post Wean	ADG	FCR	Mature Weight	Height	Length	EMA	Fat	Mar
95	109	106	126	100	96	107	110	111	108	102	123	110	114	92	93

Wean Index	365D Index	540D Index	ADG Index	FCR Index	Scrotum	LH
102	-	-	111	-	404	1.20

Myostatin	
Q204X	0
NT821	0
F94L	0

REMARKS:

LOGIX EBV Analysis: 2024-04-21



BULLE

LOT 4 ESTMENT FARMING PTY LTD

LES 210008
2021-07-26 SP

Ouerskap Vaar Moer

DNS

Genomies

LES 180030

LES 120031
OUD/KALW. 11/9
GEM. SIKALW. 99/8
TKP 370

LES 150047

LES 140029
OUD/KALW. 4/2
GEM. SIKALW. 91/1
TKP 331

LES 090025

LES 080014
OUD/KALW. 9/6
GEM. SIKALW. 100/5
TKP 530

LES 120038

LES 100038
OUD/KALW. 11/6
GEM. SIKALW. 104/5

LES 110038

LES 970027
OUD/KALW. 18/12
GEM. SIKALW. 106/12

AG 050137

LES 060012
OUD/KALW. 15/9
GEM. SIKALW. 98/9

LES 050023

LES 020047
OUD/KALW. 8/5
GEM. SIKALW. 101/5

Geboortegemak Waarde	Speenkalf Waarde	Vrugbaarheids-waarde	Onderhouds-waarde	Koeiwaarde	Groei-waarde	Karkas-waarde
69	109	102	95	101	136	143

Kalf en Moeder			Vrugbaarheid				Na-Speen Groei			Raam		Karkas			
Geb. Dir.	Spn. Dir.	Spn. Mat.	Skr. Omtr.	Vers Vrugb.	Koei Vrugb.	Lankl.	Na-Speen	GDT	VOV	Volw. Gewig	Hoogte	Lengte	OSO	Vet	Mar
77	122	97	125	104	99	100	143	151	128	103	116	127	135	117	134

Spn. Indeks	365D Indeks	540D Indeks	GDT Indeks	VOV Indeks	Skrotum	LH
97	-	-	137	-	349	1.27

Mio-stasien	
Q204X	0
NT821	0
F94L	0

LOGIX EBV Analise: 2024-04-21

OPMERKINGS:

LOT 5 ESTMENT FARMING PTY LTD

LES 210038
2021-08-27 SP

Ouerskap Vaar Moer

DNS

Genomies

LES 180069

LES 180062
OUD/KALW. 5/2
GEM. SIKALW. 98/2
TKP 666

LES 150084

LES 150065
OUD/KALW. 4/1
GEM. SIKALW. 108/1
TKP -

LES 150047

LES 080010
OUD/KALW. 12/7
GEM. SIKALW. 100/7
TKP 472

LES 120051

LES 120021
OUD/KALW. 11/8
GEM. SIKALW. 104/7

LES 120013

LES 120064
OUD/KALW. 4/2
GEM. SIKALW. 101/1

LES 120038

LES 100038
OUD/KALW. 11/6
GEM. SIKALW. 104/5

LES 050023

RW 930150
OUD/KALW. 17/11
GEM. SIKALW. 104/11

Geboortegemak Waarde	Speenkalf Waarde	Vrugbaarheids-waarde	Onderhouds-waarde	Koeiwaarde	Groei-waarde	Karkas-waarde
126	108	99	117	112	91	92

Kalf en Moeder			Vrugbaarheid				Na-Speen Groei			Raam		Karkas			
Geb. Dir.	Spn. Dir.	Spn. Mat.	Skr. Omtr.	Vers Vrugb.	Koei Vrugb.	Lankl.	Na-Speen	GDT	VOV	Volw. Gewig	Hoogte	Lengte	OSO	Vet	Mar
121	97	93	109	101	98	99	91	83	78	86	90	99	94	91	92

Spn. Indeks	365D Indeks	540D Indeks	GDT Indeks	VOV Indeks	Skrotum	LH
102	-	-	91	-	351	1.24

Mio-stasien	
Q204X	0
NT821	0
F94L	0

LOGIX EBV Analise: 2024-04-21

OPMERKINGS:

LOT 6 ESTMENT FARMING PTY LTD

LES 210037
2021-08-26 SP

Ouerskap Vaar Moer

DNS

Genomies

LES 180069

LES 180043
OUD/KALW. 5/2
GEM. SIKALW. 99/2
TKP 676

LES 150084

LES 150065
OUD/KALW. 4/1
GEM. SIKALW. 108/1
TKP -

LES 150047

LES 130052
OUD/KALW. 10/8
GEM. SIKALW. 103/8
TKP 401

LES 120051

LES 120021
OUD/KALW. 11/8
GEM. SIKALW. 104/7

LES 120013

LES 120064
OUD/KALW. 4/2
GEM. SIKALW. 101/1

LES 120038

LES 100038
OUD/KALW. 11/6
GEM. SIKALW. 104/5

LES 100040

LES 080039
OUD/KALW. 15/12
GEM. SIKALW. 104/12

Geboortegemak Waarde	Speenkalf Waarde	Vrugbaarheids-waarde	Onderhouds-waarde	Koeiwaarde	Groei-waarde	Karkas-waarde
96	102	102	101	102	95	95

Kalf en Moeder			Vrugbaarheid				Na-Speen Groei			Raam		Karkas			
Geb. Dir.	Spn. Dir.	Spn. Mat.	Skr. Omtr.	Vers Vrugb.	Koei Vrugb.	Lankl.	Na-Speen	GDT	VOV	Volw. Gewig	Hoogte	Lengte	OSO	Vet	Mar
96	103	100	105	104	100	100	100	90	87	97	101	102	112	84	99

Spn. Indeks	365D Indeks	540D Indeks	GDT Indeks	VOV Indeks	Skrotum	LH
98	-	-	91	-	333	1.20

Mio-stasien	
Q204X	0
NT821	0
F94L	0

LOGIX EBV Analise: 2024-04-21

OPMERKINGS:

BULLS

LOT 7 ESTMENT FARMING PTY LTD

LES 210027
2021-08-17 SP

Parentage Sire Dam

DNA

Genomic

LES 180029

LES 150047

LES 070048
AGE/CALV. 13/11
AVG. Wt/CALV. 96/9
ICP 369

LES 080019

LES 030044
AGE/CALV. 9/4
AVG. Wt/CALV. 106/4
ICP 501

LES 120038

LES 100038
AGE/CALV. 11/6
AVG. Wt/CALV. 104/5

LES 050013

LES 030059
AGE/CALV. 15/10
AVG. Wt/CALV. 100/10

LES 050023

LES 010046
AGE/CALV. 16/12
AVG. Wt/CALV. 99/10

LES 980145

LES 010018
AGE/CALV. 10/6
AVG. Wt/CALV. 96/6

Calving Ease Value 96	Weaner Calf Value 106	Fertility Value 109	Maintenance Value 100	Cow Value 108	Growth Value 100	Carcass Value 98
---------------------------------	---------------------------------	-------------------------------	---------------------------------	-------------------------	----------------------------	----------------------------

Calf and Mother			Fertility				Post-Wean Growth			Frame			Carcass		
Birth Dir.	Wean Dir.	Wean Mat.	Scr. Circ.	Heifer Fert.	Cow Fert.	Longev.	Post Wean	ADG	FCR	Mature Weight	Height	Length	EMA	Fat	Mar
93	106	100	116	108	102	107	104	91	80	98	111	115	116	75	82

Wean Index	365D Index	540D Index	ADG Index	FCR Index	Scrotum	LH
98	-	-	107	-	348	1.28

Myostatin	
Q204X	1
NT821	0
F94L	0

REMARKS: **LOGIX** EBV Analysis: 2024-04-21

LOT 8 ESTMENT FARMING PTY LTD

LES 210034
2021-08-24 SP

Parentage Sire Dam

DNA

Genomic

LES 180069

LES 150084

LES 150065
AGE/CALV. 4/1
AVG. Wt/CALV. 108/1
ICP -

LES 150047

LES 070028
AGE/CALV. 16/11
AVG. Wt/CALV. 100/10
ICP 407

LES 120051

LES 120021
AGE/CALV. 11/8
AVG. Wt/CALV. 104/7

LES 120013

LES 120064
AGE/CALV. 4/2
AVG. Wt/CALV. 110/1

LES 120038

LES 100038
AGE/CALV. 11/6
AVG. Wt/CALV. 104/5

LAR 010130

LES 980140
AGE/CALV. 16/12
AVG. Wt/CALV. 94/12

Calving Ease Value 102	Weaner Calf Value 103	Fertility Value 101	Maintenance Value 102	Cow Value 103	Growth Value 94	Carcass Value 95
----------------------------------	---------------------------------	-------------------------------	---------------------------------	-------------------------	---------------------------	----------------------------

Calf and Mother			Fertility				Post-Wean Growth			Frame			Carcass		
Birth Dir.	Wean Dir.	Wean Mat.	Scr. Circ.	Heifer Fert.	Cow Fert.	Longev.	Post Wean	ADG	FCR	Mature Weight	Height	Length	EMA	Fat	Mar
102	104	95	88	100	102	100	102	92	94	96	91	96	103	88	93

Wean Index	365D Index	540D Index	ADG Index	FCR Index	Scrotum	LH
95	-	-	102	-	305	1.23

Myostatin	
Q204X	1
NT821	0
F94L	0

REMARKS: **LOGIX** EBV Analysis: 2024-04-21

LOT 9 ESTMENT FARMING PTY LTD

LES 210049
2021-10-21 SP

Parentage Sire Dam

DNA

Genomic

LES 180069

LES 150084

LES 150065
AGE/CALV. 4/1
AVG. Wt/CALV. 108/1
ICP -

LES 150047

LES 060012
AGE/CALV. 15/9
AVG. Wt/CALV. 98/9
ICP 458

LES 120051

LES 120021
AGE/CALV. 11/8
AVG. Wt/CALV. 104/7

LES 120013

LES 120064
AGE/CALV. 4/2
AVG. Wt/CALV. 110/1

LES 120038

LES 100038
AGE/CALV. 11/6
AVG. Wt/CALV. 104/5

LES 040004

LES 040002
AGE/CALV. 14/9
AVG. Wt/CALV. 100/9

Calving Ease Value 108	Weaner Calf Value 102	Fertility Value 97	Maintenance Value 121	Cow Value 104	Growth Value 91	Carcass Value 93
----------------------------------	---------------------------------	------------------------------	---------------------------------	-------------------------	---------------------------	----------------------------

Calf and Mother			Fertility				Post-Wean Growth			Frame			Carcass		
Birth Dir.	Wean Dir.	Wean Mat.	Scr. Circ.	Heifer Fert.	Cow Fert.	Longev.	Post Wean	ADG	FCR	Mature Weight	Height	Length	EMA	Fat	Mar
108	94	97	113	102	94	96	96	92	90	82	82	95	107	101	98


Wean Index	365D Index	540D Index	ADG Index	FCR Index	Scrotum	LH
96	-	-	106	-	357	1.26

Myostatin	
Q204X	0
NT821	0
F94L	0

REMARKS: **LOGIX** EBV Analysis: 2024-04-21

BULLE

LOT 10 ESTMENT FARMING PTY LTD




LES 210054
2021-11-17
SP

Ouerskap Vaar Moer

DNS

Genomies



LES 180069

LES 150084 [{ **LES 120051**
OUD/KALW. 11/8
GEM. SIKALW. 104/7

LES 150065 [{ **LES 120021**
OUD/KALW. 4/1
GEM. SIKALW. 108/1
TKP -

LES 160036 [{ **LES 120013**
OUD/KALW. 4/2
GEM. SIKALW. 110/1

LES 130016 [{ **LES 120064**
OUD/KALW. 16/1
GEM. SIKALW. 99/12

LES 100093 [{ **LES 120022**
OUD/KALW. 13/9
GEM. SIKALW. 104/9

Geboortegemak Waarde	Speenkalf Waarde	Vrugbaarheids-waarde	Onderhouds-waarde	Koeiwaarde	Groei-waarde	Karkas-waarde
88	101	103	111	102	85	90


Kalf en Moeder			Vrugbaarheid				Na-Speen Groei			Raam		Karkas			
Geb. Dir.	Spn. Dir.	Spn. Mat.	Skr. Omtr.	Vers Vrugb.	Koei Vrugb.	Lankl.	Na-Speen	GDT	VOV	Volw. Gewig	Hoogte	Lengte	OSO	Vet	Mar
86	100	105	88	105	98	101	101	91	97	90	74	85	111	78	82

Spn. Indeks	365D Indeks	540D Indeks	GDT Indeks	VOV Indeks	Skrotum	LH
91	-	-	102	-	308	1.22

Miostatien	
Q204X	1
NT82I	0
F94L	0

OPMERKINGS: **LOGIX** EBV Analise: 2024-04-21

LOT 11 ESTMENT FARMING PTY LTD




LES 210015
2021-08-06
SP

Ouerskap Vaar Moer

DNS

Genomies



LES 180029

LES 150047 [{ **LES 120038**
OUD/KALW. 11/6
GEM. SIKALW. 104/5

AG 990154 [{ **LES 100038**
OUD/KALW. 13/11
GEM. SIKALW. 96/9
TKP 369

LES 940023 [{ **LES 050013**
OUD/KALW. 15/10
GEM. SIKALW. 100/10

LES 060040 [{ **AG 950284**
OUD/KALW. 14/1
GEM. SIKALW. 103/11

LES 060040 [{ **AG 900246**
OUD/KALW. 15/12
GEM. SIKALW. 104/12
TKP 404

LES 940023 [{ **LDW H 0101**
OUD/KALW. 11/8
GEM. SIKALW. 106/7

Geboortegemak Waarde	Speenkalf Waarde	Vrugbaarheids-waarde	Onderhouds-waarde	Koeiwaarde	Groei-waarde	Karkas-waarde
84	101	98	101	96	100	104

Kalf en Moeder			Vrugbaarheid				Na-Speen Groei			Raam		Karkas			
Geb. Dir.	Spn. Dir.	Spn. Mat.	Skr. Omtr.	Vers Vrugb.	Koei Vrugb.	Lankl.	Na-Speen	GDT	VOV	Volw. Gewig	Hoogte	Lengte	OSO	Vet	Mar
85	107	97	121	94	106	96	110	104	100	97	121	114	115	95	101


Spn. Indeks	365D Indeks	540D Indeks	GDT Indeks	VOV Indeks	Skrotum	LH
96	-	-	111	-	350	1.24

Miostatien	
Q204X	0
NT82I	0
F94L	0

OPMERKINGS: **LOGIX** EBV Analise: 2024-04-21

DRAGTIGE VERSE

LOT 16A ESTMENT FARMING PTY LTD




LES 210010
2021-07-29
SP

Ouerskap Vaar Moer

DNS

Genomies



LES 180069

LES 150084 [{ **LES 120051**
OUD/KALW. 11/8
GEM. SIKALW. 104/7

LES 150098 [{ **LES 120021**
OUD/KALW. 4/1
GEM. SIKALW. 108/1
TKP -

LES 070017 [{ **LES 120013**
OUD/KALW. 4/2
GEM. SIKALW. 110/1

LES 070017 [{ **LES 120064**
OUD/KALW. 16/1
GEM. SIKALW. 99/12

LES 070017 [{ **LES 130039**
OUD/KALW. 15/11
GEM. SIKALW. 98/11

LES 070017 [{ **LES 050057**
OUD/KALW. 13/10
GEM. SIKALW. 109/10

Geboortegemak Waarde	Speenkalf Waarde	Vrugbaarheids-waarde	Onderhouds-waarde	Koeiwaarde	Groei-waarde	Karkas-waarde
122	94	94	118	99	78	78

Kalf en Moeder			Vrugbaarheid				Na-Speen Groei			Raam		Karkas			
Geb. Dir.	Spn. Dir.	Spn. Mat.	Skr. Omtr.	Vers Vrugb.	Koei Vrugb.	Lankl.	Na-Speen	GDT	VOV	Volw. Gewig	Hoogte	Lengte	OSO	Vet	Mar
120	87	91	85	94	94	104	87	78	80	85	76	82	93	88	94

Spn. Indeks	365D Indeks	540D Indeks	GDT Indeks	VOV Indeks	LH
98	97	97	-	-	-

Miostatien	
Q204X	Nie Getoets
NT82I	Nie Getoets
F94L	Nie Getoets

OPMERKINGS: 4 Maande dragtig van LES 20-002 **LOGIX** EBV Analise: 2024-04-21



PREGNANT HEIFERS

LOT 16B ESTMENT FARMING PTY LTD

LES 210056
2021-11-22 SP
Parentage Sire Dam
DNA
Genomic

LES 180029

LES 150047 [{ **LES 120038**
AGE/CALV. 11/6
AVG. W/CALV. 104/5

LES 070048 [{ **LES 100038**
AGE/CALV. 11/6
AVG. W/CALV. 104/5

LES 090023 [{ **LES 050013**
AGE/CALV. 13/11
AVG. W/CALV. 96/9
ICP 369

LES 020069 [{ **LES 030059**
AGE/CALV. 15/10
AVG. W/CALV. 100/10

LES 120025 [{ **AG 050137**
AGE/CALV. 12/8
AVG. W/CALV. 107/9

LES 020069 [{ **LES 980162**
AGE/CALV. 11/7
AVG. W/CALV. 101/7
ICP 485

LES 020069 [{ **LES 960046**
AGE/CALV. 11/7
AVG. W/CALV. 110/7
ICP 476

LES 020069 [{ **LES 930069**
AGE/CALV. 10/6
AVG. W/CALV. 103/6

Calving Ease Value 91	Weaner Calf Value 109	Fertility Value 106	Maintenance Value 103	Cow Value 107	Growth Value 94	Carcass Value 103
---------------------------------	---------------------------------	-------------------------------	---------------------------------	-------------------------	---------------------------	-----------------------------

Calf and Mother			Fertility				Post-Wean Growth			Frame			Carcass		
Birth Dir.	Wean Dir.	Wean Mat.	Scr. Circ.	Heifer Fert.	Cow Fert.	Longev.	Post Wean	ADG	FCR	Mature Weight	Height	Length	EMA	Fat	Mar
88	113	91	118	98	107	109	110	96	94	96	109	110	117	90	97

Wean Index	365D Index	540D Index	ADG Index	FCR Index	LH
105	104	97	-	-	-

Myostatin		
Q204X	NT821	F94L
Not Tested	Not Tested	Not Tested

REMARKS: 4 Maande dragtig van LES 17-037

LOGIX EBV Analysis: 2024-04-21

LOT 17A ESTMENT FARMING PTY LTD

LES 210033
2021-08-24 SP
Parentage Sire Dam
DNA
Genomic

LES 180069

LES 150084 [{ **LES 120051**
AGE/CALV. 11/8
AVG. W/CALV. 104/7

LES 150065 [{ **LES 120021**
AGE/CALV. 11/8
AVG. W/CALV. 104/7

LES 150047 [{ **LES 120013**
AGE/CALV. 4/2
AVG. W/CALV. 110/1

LES 050032 [{ **LES 120064**
AGE/CALV. 15/9
AVG. W/CALV. 97/8
ICP 436

LES 180031 [{ **LES 120038**
AGE/CALV. 11/6
AVG. W/CALV. 104/5

LES 050032 [{ **LES 100038**
AGE/CALV. 11/6
AVG. W/CALV. 104/5

LES 050032 [{ **LAR 010130**
AGE/CALV. 6/3
AVG. W/CALV. 96/2

LES 050032 [{ **LES 020052**
AGE/CALV. 6/3
AVG. W/CALV. 96/2

Calving Ease Value 117	Weaner Calf Value 105	Fertility Value 98	Maintenance Value 114	Cow Value 106	Growth Value 89	Carcass Value 88
----------------------------------	---------------------------------	------------------------------	---------------------------------	-------------------------	---------------------------	----------------------------

Calf and Mother			Fertility				Post-Wean Growth			Frame			Carcass		
Birth Dir.	Wean Dir.	Wean Mat.	Scr. Circ.	Heifer Fert.	Cow Fert.	Longev.	Post Wean	ADG	FCR	Mature Weight	Height	Length	EMA	Fat	Mar
112	99	88	94	99	97	101	97	88	88	89	91	95	102	86	96

Wean Index	365D Index	540D Index	ADG Index	FCR Index	LH
99	93	90	-	-	-

Myostatin		
Q204X	NT821	F94L
Not Tested	Not Tested	Not Tested

REMARKS: 6 Maande dragtig van LES 17-037

LOGIX EBV Analysis: 2024-04-21

LOT 17B ESTMENT FARMING PTY LTD

LES 210053
2021-11-07 SP
Parentage Sire Dam
DNA
Genomic

LES 180029

LES 150047 [{ **LES 120038**
AGE/CALV. 11/6
AVG. W/CALV. 104/5

LES 070048 [{ **LES 100038**
AGE/CALV. 11/6
AVG. W/CALV. 104/5

LES 110027 [{ **LES 050013**
AGE/CALV. 13/11
AVG. W/CALV. 96/9
ICP 369

LES 080052 [{ **LES 030059**
AGE/CALV. 15/10
AVG. W/CALV. 100/10

LES 130063 [{ **LES 090023**
AGE/CALV. 14/9
AVG. W/CALV. 106/9

LES 080052 [{ **LES 080071**
AGE/CALV. 14/9
AVG. W/CALV. 106/9

LES 080052 [{ **LES 050013**
AGE/CALV. 15/10
AVG. W/CALV. 98/6
ICP 503

LES 080052 [{ **LES 050041**
AGE/CALV. 14/8
AVG. W/CALV. 101/8

Calving Ease Value 102	Weaner Calf Value 111	Fertility Value 115	Maintenance Value 120	Cow Value 118	Growth Value 94	Carcass Value 101
----------------------------------	---------------------------------	-------------------------------	---------------------------------	-------------------------	---------------------------	-----------------------------

Calf and Mother			Fertility				Post-Wean Growth			Frame			Carcass		
Birth Dir.	Wean Dir.	Wean Mat.	Scr. Circ.	Heifer Fert.	Cow Fert.	Longev.	Post Wean	ADG	FCR	Mature Weight	Height	Length	EMA	Fat	Mar
100	108	88	116	104	113	114	106	97	96	83	101	101	108	112	110

Wean Index	365D Index	540D Index	ADG Index	FCR Index	LH
99	92	102	-	-	-

Myostatin		
Q204X	NT821	F94L
Not Tested	Not Tested	Not Tested

REMARKS: 5.5 Maande dragtig van LES 17-037

LOGIX EBV Analysis: 2024-04-21

DRAGTIGE KOEIE

LOT 18A ESTMENT FARMING PTY LTD

LES 200018
2020-07-15 SP
OUD/KALW. 3/1
GEM. SI/KALW. 102/1
TKP -

Ouerskap Vaar Moer

DNS

Genomies

LES 170051

LES 120025
OUD/KALW. 1/7
GEM. SI/KALW. 101/7
TKP 485

LES 140044

LES 090084
OUD/KALW. 12/8
GEM. SI/KALW. 100/8
TKP 458

LES 090023

LES 020069
OUD/KALW. 1/7
GEM. SI/KALW. 110/7
TKP 476

LES 110042

LES 060061
OUD/KALW. 17/12
GEM. SI/KALW. 104/12

AG 050137

LAR 040151
OUD/KALW. 17/11
GEM. SI/KALW. 99/11

AG 050137

LES 980162
OUD/KALW. 12/8
GEM. SI/KALW. 107/9

LES 960046

LES 930069
OUD/KALW. 10/6
GEM. SI/KALW. 103/6

Geboortegemak Waarde	Speenkalf Waarde	Vrugbaarheids-waarde	Onderhouds-waarde	Koeiwaarde	Groei-waarde	Karkas-waarde
105	97	90	112	95	94	93

Kalf en Moeder			Vrugbaarheid				Na-Speen Groei			Raam			Karkas		
Geb. Dir.	Spn. Dir.	Spn. Mat.	Skr. Omtr.	Vers Vrugb.	Koei Vrugb.	Lankl.	Na-Speen	GDT	VOV	Volw. Gewig	Hoogte	Lengte	OSO	Vet	Mar
105	93	101	107	86	96	105	96	94	97	90	108	97	97	109	102

Spn. Indeks	365D Indeks	540D Indeks	GDT Indeks	VOV Indeks	LH
95	99	96	-	-	-

Miostatien	
Q204X	Nie Getoets
NT821	Nie Getoets
F94L	Nie Getoets

OPMERKINGS: 4.5 Maande dragtig van LAR 17-339

LOGIX EBV Analise: 2024-04-21

LOT 18B ESTMENT FARMING PTY LTD

HEH 200044
2020-09-17 SP
OUD/KALW. 3/1
GEM. SI/KALW. 106/1
TKP -

Ouerskap Vaar Moer

DNS

Genomies

LES 140040

HDT 120166
OUD/KALW. 1/7
GEM. SI/KALW. 100/6
TKP 504

LES 110038

LES 080004
OUD/KALW. 14/11
GEM. SI/KALW. 99/11
TKP 443

DFP 080212 P

LAR 070486
OUD/KALW. 5/3
GEM. SI/KALW. 98/3
TKP 378

LES 060033

LES 020049
OUD/KALW. 10/5
GEM. SI/KALW. 109/5

LES 050013

LES 000046
OUD/KALW. 12/9
GEM. SI/KALW. 97/9

DFP 060164

DFP 060009
OUD/KALW. 3/2
GEM. SI/KALW. 92/1

☞ LAR 040172

LAR 020320
OUD/KALW. 15/11
GEM. SI/KALW. 108/8

Geboortegemak Waarde	Speenkalf Waarde	Vrugbaarheids-waarde	Onderhouds-waarde	Koeiwaarde	Groei-waarde	Karkas-waarde
93	91	103	97	91	101	100

Kalf en Moeder			Vrugbaarheid				Na-Speen Groei			Raam			Karkas		
Geb. Dir.	Spn. Dir.	Spn. Mat.	Skr. Omtr.	Vers Vrugb.	Koei Vrugb.	Lankl.	Na-Speen	GDT	VOV	Volw. Gewig	Hoogte	Lengte	OSO	Vet	Mar
91	101	87	103	104	96	105	103	100	95	102	93	98	104	114	109

Spn. Indeks	365D Indeks	540D Indeks	GDT Indeks	VOV Indeks	LH
106	102	116	-	-	-

Laaste Kalf		Miostatien	
Kalf ID	LES 230059 (M)	Q204X	Nie Getoets
Geb. dtm.	2023-09-09	NT821	Nie Getoets
Vaar ID	LES 200004	F94L	Nie Getoets

OPMERKINGS: 4 Maande dragtig van LAR 17-339

LOGIX EBV Analise: 2024-04-21

LOT 19 ESTMENT FARMING PTY LTD

LES 200030
2020-07-25 SP
OUD/KALW. 3/1
GEM. SI/KALW. 94/1
TKP -

Ouerskap Vaar Moer

DNS

Genomies

LES 170081

LES 120026
OUD/KALW. 1/8
GEM. SI/KALW. 108/8
TKP 418

LES 140040

LAR 040274
OUD/KALW. 13/9
GEM. SI/KALW. 96/9
TKP 456

LES 090023

LES 070048
OUD/KALW. 13/11
GEM. SI/KALW. 96/9
TKP 369

LES 110038

LES 080004
OUD/KALW. 14/11
GEM. SI/KALW. 99/11

LAR 010260

LAR 980263
OUD/KALW. 12/10
GEM. SI/KALW. 105/10

AG 050137

LES 980162
OUD/KALW. 12/8
GEM. SI/KALW. 107/9

LES 050013

LES 030059
OUD/KALW. 15/10
GEM. SI/KALW. 100/10

Geboortegemak Waarde	Speenkalf Waarde	Vrugbaarheids-waarde	Onderhouds-waarde	Koeiwaarde	Groei-waarde	Karkas-waarde
81	102	113	108	104	101	99

Kalf en Moeder			Vrugbaarheid				Na-Speen Groei			Raam			Karkas		
Geb. Dir.	Spn. Dir.	Spn. Mat.	Skr. Omtr.	Vers Vrugb.	Koei Vrugb.	Lankl.	Na-Speen	GDT	VOV	Volw. Gewig	Hoogte	Lengte	OSO	Vet	Mar
78	109	91	123	109	109	106	109	102	99	92	95	101	110	97	101

Spn. Indeks	365D Indeks	540D Indeks	GDT Indeks	VOV Indeks	LH
107	99	98	-	-	-

Miostatien	
Q204X	Nie Getoets
NT821	Nie Getoets
F94L	Nie Getoets

OPMERKINGS: 3 Maande dragtig van LES 20-002

LOGIX EBV Analise: 2024-04-21



PREGNANT COWS

LOT 20A ESTMENT FARMING PTY LTD

LES 190007
2019-05-26 SP
AGE/CALV. 4/1
AVG. W/CALV. 92/1
ICP -

Parentage Sire Dam
DNA
Genomic

LES 160036
AGE/CALV. 8/6
AVG. W/CALV. 100/6
ICP 378

LES 120022 — [—] **LES 090025**
 LES 080009 AGE/CALV. 5/2
 AVG. W/CALV. 92/2

LES 070017 — [—] **LES 040004**
 AGE/CALV. 16/11
 AVG. W/CALV. 99/12
 ICP 467

LES 120038 — [—] **LES 970091**
 AGE/CALV. 13/10
 AVG. W/CALV. 109/10

LES 150051 — [—] **LES 090023**
 AGE/CALV. 14/10
 AVG. W/CALV. 110/10

LES 100018 — [—] **LES 990050**
 AGE/CALV. 7/5
 AVG. W/CALV. 106/4
 ICP 427

LES 100018 — [—] **LES 060050**
 AGE/CALV. 10/3
 AVG. W/CALV. 93/2

Calving Ease Value	Weaner Calf Value	Fertility Value	Maintenance Value	Cow Value	Growth Value	Carcass Value
83	92	118	89	98	96	93

Calf and Mother			Fertility				Post-Wean Growth			Frame			Carcass		
Birth Dir.	Wean Dir.	Wean Mat.	Scr. Circ.	Heifer Fert.	Cow Fert.	Longev.	Post Wean	ADG	FCR	Mature Weight	Height	Length	EMA	Fat	Mar
81	108	86	99	116	111	104	110	98	95	112	100	102	103	74	85

Wean Index	365D Index	540D Index	ADG Index	FCR Index	LH
95	92	-	-	-	-

Myostatin	
Q204X	Not Tested
NT821	Not Tested
F94L	Not Tested

LOGIX EBV Analysis: 2024-04-21

REMARKS: 3 Maande dragtig van LES 20-002

LOT 20B ESTMENT FARMING PTY LTD

LES 180026
2018-06-11 SP
AGE/CALV. 5/2
AVG. W/CALV. 107/2
ICP 517

Parentage Sire Dam
DNA
Genomic

LES 150047
AGE/CALV. 12/8
AVG. W/CALV. 100/8
ICP 458

LES 120038 — [—] **LES 090023**
 LES 990050 AGE/CALV. 14/10
 AVG. W/CALV. 110/10

LES 100038 — [—] **LES 070020**
 AGE/CALV. 11/6
 AVG. W/CALV. 104/5
 ICP 469

AG 050137 — [—] **LES 020054**
 AGE/CALV. 12/9
 AVG. W/CALV. 108/8

LES 090084 — [—] **AG 000100**
 AGE/CALV. 9/6
 AVG. W/CALV. 99/6

LAR 040151 — [—] **AG 020124**
 AGE/CALV. 17/11
 AVG. W/CALV. 99/11
 ICP 476

LAR 010175 — [—] **HJL 010126**
 AGE/CALV. 9/7
 AVG. W/CALV. 108/7

Calving Ease Value	Weaner Calf Value	Fertility Value	Maintenance Value	Cow Value	Growth Value	Carcass Value
108	104	118	101	115	108	108

Calf and Mother			Fertility				Post-Wean Growth			Frame			Carcass		
Birth Dir.	Wean Dir.	Wean Mat.	Scr. Circ.	Heifer Fert.	Cow Fert.	Longev.	Post Wean	ADG	FCR	Mature Weight	Height	Length	EMA	Fat	Mar
110	107	87	108	117	114	100	118	107	99	98	116	114	112	92	103

Wean Index	365D Index	540D Index	ADG Index	FCR Index	LH
96	110	-	-	-	-

Myostatin	
Q204X	Not Tested
NT821	Not Tested
F94L	Not Tested

LOGIX EBV Analysis: 2024-04-21

REMARKS: 3 Maande dragtig van LES 20-002

Dier Info				Actual Values						Expected Breeding Values								Indices			Dam					
LOT	Animal ID	Sex	SEC	Birth Wt (kg)	205d Wt (kg)	CCB Ratio	CCW Ratio	Length Height Ratio	Scr. Circ. (mm)	Birth Dir (kg)	Birth Mat (kg)	Wean Dir (kg)	Wean Mat (kg)	Post Wean (kg)	Mature Weight. (kg)	ADG (g/d)	FCR (kg:kg)	Scr. Circ. (mm)	Height. (mm)	Length (mm)	Wean	ADG	Scr. Circ.	Avg. Wean Index	Nr. Calves	Repr. Index
Breed Average Auction Average				31	210	7.08	45.1	1.25	343	1.09	-0.23	14.5	3.9	24	10	109	-49	12.0	1.0	16.0	99	106	107	100	5.0	88
1	LES 210020	M	SP	38	245	8.35	46.2	1.29	355	3.38	-0.32	21.9	3.2	37.9	7.9	119	-45	21.6	-2	28	103	107	115	103	8	100
2	LES 210023	M	SP	26	227	7.12	-	1.31	314	0.23	-0.45	11.1	1.5	19.6	7.0	12	-1	4.1	-25	1	100	98	88	100	1	52
3	LES 200002	M	SP	33	223	5.89	47.5	1.20	404	1.59	-0.16	18.7	5.5	35.1	12.1	161	-64	29.2	20	29	102	111	126	104	9	96
4	LES 210008	M	SP	37	233	7.12	43.4	1.27	349	3.61	1.07	24.5	3.1	58.8	13.1	362	-104	28	14	51	97	137	125	99	9	109
5	LES 210038	M	SP	24	230	7.27	54.3	1.24	351	-1.25	-1.03	12.9	1.7	21.0	-5.8	27	-8	17.7	-7	14	102	91	109	98	2	74
6	LES 210037	M	SP	31	228	8.73	47.5	1.20	333	1.49	-0.10	16.1	3.8	26.3	6.5	61	-25	15.3	2	19	98	91	105	99	2	73
7	LES 210027	M	SP	29	226	5.8	39.6	1.28	348	1.86	-0.78	17.1	3.7	30.5	7.1	62	-12	22.3	10	35	98	107	116	104	9	96
8	LES 210034	M	SP	29	221	7.73	46.3	1.23	305	0.93	-0.34	16.4	2.4	28.4	5.6	72	-37	4.5	-7	10	95	102	88	98	2	73
9	LES 210049	M	SP	30	187	8.82	53.5	1.26	357	0.27	-0.35	12.0	3.1	23.5	-10.1	70	-30	20.2	-14	10	96	106	113	96	2	74
10	LES 210054	M	SP	38	187	10.56	45.8	1.22	308	2.57	-0.52	14.5	5.2	27.1	-1.0	66	-44	4.2	-21	-4	91	102	88	101	2	93
11	LES 210015	M	SP	33	226	7.25	48.9	1.24	350	2.69	0.03	17.8	3.0	33.5	6.3	128	-50	25.7	18	35	96	111	121	100	10	77
16A	LES 210010	F	SP	21	197	6.56	50	-	-	-1.04	-0.65	8.4	1.4	16.6	-6.6	-1	-12	2.6	-19	-7	98	-	85	100	2	103
16B	LES 210056	F	SP	31	195	5.9	40	-	-	2.41	-0.78	20.5	1.2	34.3	5.3	91	-38	23.8	9	29	105	-	118	101	7	89
17A	LES 210033	F	SP	24	202	6.58	42.5	-	-	-0.19	-1.14	14.3	0.5	24.9	-2.1	50	-27	8.2	-6	10	99	-	94	97	2	72
17B	LES 210053	F	SP	30	184	6.38	42.6	-	-	1.11	-0.59	18.0	0.4	32.1	-8.7	92	-42	22.3	2	17	99	-	116	98	6	89
18A	LES 200018	F	SP	25	184	6.02	41.9	-	-	0.51	-0.11	11.2	4.1	23.5	-1.4	79	-43	16.3	8	11	95	-	107	101	7	89
18B	HEH 200044	F	SP	36	209	6.21	39.9	-	-	2.13	-0.68	14.9	0.0	29.4	11.7	110	-40	14.2	-5	13	106	-	103	100	7	92
19	LES 200030	F	SP	34	213	7.39	43.8	-	-	3.46	-0.71	18.6	1.2	33.4	1.1	118	-48	26.9	-3	17	107	-	123	108	8	101
20A	LES 190007	F	SP	35	194	7.07	41.8	-	-	3.12	-0.52	18.1	-0.2	34.6	22.8	98	-40	11.7	1	18	95	-	99	100	6	106
20B	LES 180026	F	SP	27	187	4.91	40.8	-	-	-0.02	0.13	17.6	0.1	40.7	7.4	142	-47	17.2	14	34	96	-	108	100	8	96

EXPLANATION OF CATALOGUE ABBREVIATIONS		VERDUIDELIKING VAN KATALOGUS AFKORTINGS	
Lot Number	LOT	LOT	Lot Nommer
Estimated breeding value	EBV	EBV	Beraamde teelwaarde
Parentage verification	Parentage	Ouerskap	Ouerskap verifikasie
Age in years / Number of calvings	AGE. / CALV.	OUDE. / KALF.	Ouderdom in jaar / Aantal kalwings
Average Wean index / Number of calves weaned	Ave WI / CALV.	GEM SI / KALF.	Gemiddelde speen indeks / Aantal kalwers gespeen
Animal identification number	ID	ID	Dier se identifikasie nommer
Herd Book Section	SEC	AFD	Kuddeboek Afdeling
Herd Book Section: Pending Registration	PEN	PEN	Kuddeboek Afdeling: Wag vir Registrasie
Herd Book Section: Not for Registration	NFR	NFR	Kuddeboek Afdeling: Nie vir Registrasie
Herd Book Section: Foundation Generation	FO	FO	Kuddeboek Afdeling: Fondasie Generasie
Herd Book Section: Appendix A	A	A	Kuddeboek Afdeling: Aanhangsel A
Herd Book Section: Appendix B	B	B	Kuddeboek Afdeling: Aanhangsel B
Herd Book Section: Studbook Proper, a registered animal	SP	SP	Kuddeboek Afdeling: Studbook Proper, 'n geregistreerde dier
Genomically Tested	GT	GT	Genomies Getoets
Homozygous Horned (Celtic test)	HH(c)	HH(c)	Homosigoties horings (Celtic toets)
Homozygous Polled (Celtic test)	PP(c)	PP(c)	Homosigoties Poena (Celtic toets)
Heterozygous Polled (Celtic test)	Pp(c)	Pp(c)	Heterosigoties Poena (Celtic toets)
Phenotypically Polled	P	P	Fenotopies Poena
Intercalving Period	ICP	TKP	Tussen-Kalf Periode
Birth Direct breeding value	Birth Dir.	Geb. Dir	Geboorte Direk teelwaarde
Wean Direct breeding value	Wean Dir.	Spn. Dir.	Speen Direk teelwaarde
Wean Maternal breeding value	Wean Mat.	SPn. Mat.	Speen Maternaal teelwaarde
Scrotal Circumference	Scr. Circ.	Skr. Omt.	Skrotum omtrek
Heifer Fertility	Heifer Fert.	Vers Vrugh.	Vers Vrughbaarheid
Cow Fertility	Cow Fert.	Koei Vrugh.	Koei Vrughbaarheid
Longevity	Longev.	Lankl.	Lanklewendheid
Mature Weight	Mat. Wt.	Volw. Gewig	Volwasse gewig
Average Daily Gain (g/day)	ADG	GDT	Gemiddelde Daaglikse Toename
Feed Conversion Ratio (kg:kg)	FCR	VOV	Voeromset Verhouding
Eye Muscle Area	EMA	OSO	Oogspier grootte
Backfat Thickness	Fat	Vet	Rugvet Diepte
Marbeling (intra-muscular fat)	Mar	Mar	Marmering (binne-spiers vet)
365-day weight index	365D Index	365D Indeks	365-dae gewig indeks
540-day weight index	540D Index	540D Indeks	540-dae gewig indeks
Length-Height ratio	LH	LH	Lengte-Hoogte Verhouding
Actual Birth weight	Birth Wt.	Geb. gewig	Werklike Geboorte gewig
205-day Dam-age corrected weight	205d Wt.	205d gewig	205-dag Moeder-ouderdom gekorrigeerde gewig
Cow-Calf Birth Ratio	CCG	KKG	Koei-Kalf Geboorte Verhouding
Cow-Calf Wean Ratio	CCW	KKS	Koei-Kalf Speen Verhouding
Average Weaning Index	Avg. Wean Index	Gem. Spn. Indeks	Gemiddelde speen indeks
Number of Calves	Nr. Calves	Aant. Kalw.	Aantal kalwers
Reproduction Index	Repr. Index	Repr. Indeks	Reproduksie indeks
Animal sex: M - Male, F - Female	M / F	M / V	Dier geslag: M - Manlik, V - Vroulik



SALE CATALOGUE ESTMENT FARMING (PTY)LTD

COMMERCIAL FEMALES

Date: 06 May 2024

Contact : LES Schulze

Tel : 0878063254, 0824953062

E-Mail : bronrich@polka.co.za

Member No : 0700923BON

Lot	ID		BIRTH		GROWTH RATE					EFFICIENCY		MEASUREMENT			REP		PARENTS		REPRODUCTION						FEMALE ANIMALS	
			Birth Dir Acc	Birth Mat Acc	Wean Dir Acc	Wean Mat Acc	12M Acc	18M Acc	Matur Wgt Acc	ADG Acc	FCR Acc	Klb Acc	Hgt Acc	Lgt Acc	SC Acc	Sire ID	Dam ID	Calf			AFC (m)	Age	Ave WT	Days Open	MATINGS	BREEDER REMARK
			Wgt	Date	Wgt	Ind	Ind	Ind	Ind	Ind	Ind	Ind	(mm)	(mm)	Aw	Aw	IDno	SIRE	Wgt	ICP	Calv	Calv	R.I.			
21	HEH 20 0006		1.10 75	-0.11 45	15.6 68	2.1 47	23.3 56	29.0 52	-1 33	99 45	-43 10	75 45	1.8 48	12.3 48	22.3 48	LES 14 044	HEH 17 079						0			
			33	17.03.20	199	100	90	103													0	1	0			
21	HEH 20 0007		1.19 77	-0.40 56	12.0 68	6.6 48	18.2 52	23.3 56	11 32	97 46	-36 9	70 46	3.0 49	16.0 48	23.3 49	LES 14 044	HEH 14 038					3.4	97			4.5 M PREG LAR17-339
			35	17.03.20	204	102	105	98													0	1	1			
21	HEH 20 0031		1.13 70	0.51 48	7.3 59	4.2 38	11.0 19	13.4 20	-7 14				0	0		? MULTIS	HEH 13 025					3.2	98			2.5 M PREG LES 20 02
			34	09.05.20	196	97	94														0	1	1			

Abbreviations of Bull Awards

U = Phase C Merit-Sub, B=Phase C Merit-Bronze, S=Phase C Merit-Silver, G=Phase C Merit-Gold, P=Platinum, R=ARC Special Performance Test Class Representative, W=ARC Special Performance Test Class Winner

ESTMENT FARMING (PTY) LTD KOMMERSIELE KATALOGUS

21 MEI 2024

MEYER DE JAGER FAMILIE TRUST

<u>LOT</u>	<u>GETAL</u>	<u>BESKRYWING</u>	<u>OPMERKING</u>	<u>PRYS</u>
22	5	VROULIKE DIERE	SWAARDRAGTIG	
23	5	VROULIKE DIERE	SWAARDRAGTIG	
24	5	VROULIKE DIERE	DRAGTIG	
25	5	VROULIKE DIERE	DRAGTIG	

ESTMENT FARMING (PTY) LTD BEDANK DIE VOLGENDE BORGE:



RULES OF AUCTION
TERMS AND CONDITIONS

1. This auction will be held under the control of BKB Limited (hereinafter referred to as "the Auctioneer") with business premises situate at:
61 Grahamstown Road, North End, Port Elizabeth, 6001
2. The Auctioneer is hereby appointed by the Purchaser and Seller to act for and on behalf of the Purchaser and Seller as agent in accordance with Section 54 of the Value-Added Tax Act, 1991, in respect of all tax invoices, credit and/or debit notes in respect of all livestock, game and/or goods offered at the auction or any costs of transport and insurances premiums paid for on behalf of the Purchaser and Seller.
3. The rules of this auction shall comply with the provisions of Section 45 and all relevant regulations to the Consumer Protection Act 68 of 2008.
4. For greater clarity Section 45(1-4) states as follows:
 - 4.1 In this section, "auction" includes a sale in execution of or pursuant to a court order, to the extent that the order contemplates that the sale is to be conducted by an auction.
 - 4.2 When goods are put up for sale by auction, each lot is, unless there is evidence to the contrary, regarded to be the subject of a separate transaction.
 - 4.3 A sale by auction is complete when the auctioneer announces its completion by the fall of the hammer, or in any other customary manner, and until that announcement is made, a bid may be retracted.
 - 4.4 Notice must be given in advance that a lot or sale by auction is subject to:
 - 4.4.1 A reserved or upset price; or
 - 4.4.2 A right to bid by or on behalf of the owner or auctioneer, in which case the owner or auctioneer, or any one person on behalf of the owner or auctioneer, as the case may be, may bid at the auction.
5. Until the fall of the hammer as contemplated in Section 45(3) of the Act, any bid may be retracted or declined by the Auctioneer if not compliant with the regulations of the Consumer Protection Act.
6. The auction is not an absolute auction but subject to reserved prices settled by the sellers and as pointed out by the Auctioneer prior to the sale of the set asset or lot.
7. The auction shall take place at the date and time as advertised or publicised and will not be postponed or delayed to enable any member or group of the public to partake in the auction.
8. Should the Auctioneer become aware of any fault on advertising material or any other publication or amendment to these Rules of Auction, the Auctioneer will prior to the auction point out and when necessary amend such mistakes in the advertisement or publication.
9. Any person attending the auction to enter a bid, must prior to the auction register as a buyer on the bidders' roll and comply with the conditions as set out in Chapter 1 of FICA 2001. The purchaser shall sign the bidders' roll/card.
10. Any person who attends the auction to enter a bid on behalf of another person must be duly authorised thereto by means of a written letter of authority from its principal and such a person together with his principal must both register prior to the auction on the bidders' roll and provide all necessary information as required in Chapter 1 of the regulations issued in terms of FICA 2001 with regard to proof of its identity. The bidders' roll must be signed by such a person and on behalf of its principal.

11. Where the principal is a company the letters of authority shall appear on the letterhead of the company together with a certified copy of a resolution authorizing the person to bid on behalf of the company. (For purposes of this rule any reference to a company will include any reference to juristic person including partnerships, trusts or incorporated entities).
12. All purchasers have a right of inspection of all goods put up for sale and the auctioneer shall provide reasonable time and access prior to the start of the auction for such an inspection.
13. All livestock and goods are sold "voetstoots" and the purchasers do not enjoy the protection of Section 55 and 56 of the Consumer Protection Act.
14. Any information provided regarding the quality, breeding, age, date of insemination, condition, reproductive status or any information regarding health, production or mass or any other aspect of the livestock, is provided by the seller and any misrepresentation by the seller is without the cooperation or knowledge of the Auctioneer. Any right of recourse as a result of such misrepresentation shall be against the seller.
15. Any bid made does not include VAT which, where applicable, will be added to the bidding price for which a VAT invoice will be issued.
16. All sales are for cash and purchase price is payable immediately to the Auctioneer on acceptance of the bid unless otherwise arranged prior to the auction with the Auctioneer. Any payment made in cash is further subject to cash or any other handling fees. Should the Purchaser however fail to make payment within 7 days from date of delivery, BKB will be entitled to add interest calculated at the current bank prime rate plus 5% to the capital amount outstanding. The interest will be calculated monthly and capitalised.
17. Should the purchaser not pay the purchase price immediately and has failed to make arrangements for payment with the Auctioneer, then the Auctioneer can/will cancel the sale and treat the assets or lots as unsold lots which may again be presented on the auction for sale or be sold out of hand by means of liaison services, depending on the seller's mandate to the auctioneer.
18. Ownership in the lot or assets will remain that of the seller until the purchase price has been paid in full to the seller with the provision that the risk in the assets or lot passes to the purchaser at the fall of the hammer as set out in clause 24.
19. In the event that Purchaser has made necessary finance arrangements with BKB, the Purchaser hereby authorises BKB to pay the purchase price or costs of transport, insurance and any other agreed cost, minus BKB's commissions, on behalf of the Purchaser to the Seller and other service providers, in which event the said payment by BKB on behalf of the Purchaser will be deemed to be monies lent and advanced, the terms and conditions thereof being agreed with the Purchaser in a separate credit agreement or sale agreement. All payments made by BKB to the Seller on behalf of the Purchaser in terms of this clause will be made after the lapse of 5 (Five) working days from date of delivery of the asset to the Purchaser. Any payment made by BKB to the Seller prior to the lapse of the 5 (Five) working day period is made at the sole discretion of BKB and not an enforceable indulgence.
20. For as long as any amount is owing to BKB by the Purchaser, the Purchaser may not, where the assets are the subject of security of the Purchaser's credit facility with BKB, relinquish possession of the said asset, nor may he cede the asset or any of its rights and obligations in terms of this agreement to a third party or otherwise encumber, sell or dispossess the said asset or allow it to become the subject of any right of retention, hypothec, pledge or any encumbrance, whatever the cause thereof may be. BKB may be entitled to cede its rights and obligations without affecting its rights of recourse for any monies still due to it.
21. In the event of the Seller already being indebted to BKB or any of its affiliates at the time of this auction, the Seller hereby irrevocably authorises BKB to set off the purchase price due to the Seller by BKB (minus BKB's commission) against the amounts due by the Seller to BKB.
22. Where BKB, in terms of a credit agreement, lent and advanced monies to the Purchaser for payment of the purchase price of any asset or payment of any transport costs or insurance premiums, no defence of whatsoever nature which the Purchaser may raise against the Seller or the transport contractor or the insurance company may be

raised against BKB and the Purchaser shall still be obligated to pay all amounts owing, together with further interest and costs thereon raised in terms of the credit agreement or sale agreement, to be BKB. The conditions of this clause do not interfere with the rights, entitlements or remedies the Purchaser may have against the Seller, transport contractor or insurance company.

23. Neither the Purchaser, nor the Seller, shall be entitled to apply set-off or to retain any monies owing arising from any claim they may have against each other or BKB with regards to any amount owing in terms hereof.
24. Each lot shall immediately after the fall of the hammer deemed to be delivered to the purchaser at which time the risk will pass to the purchaser who will at his own risk and cost remove the lots or assets from the auction terrain. Removal of any assets or lots however will not be allowed by the Auctioneer until payment of the purchase price by the purchaser or acceptable arrangements for payment thereof have been made by the purchaser with the Auctioneer.
25. The Auctioneer will only be obliged to give reasons of the auction if such reasons are other than the voluntary sale of goods by its owners.
26. The bidders' roll and vendor roll will be available for inspection during the normal office hours at the business premises of the Auctioneer.
27. The rules of auction will only be read out at the auction if they were not available to the public at the place of business of the Auctioneer. In the event of livestock and game auctions, the rules of auction remain unchanged and are in general available at the business premises of the Auctioneer or on the website of the Auctioneer.
28. Under no circumstances will BKB be held liable for any loss or damage of any cause whatsoever albeit direct or indirect damages suffered by anyone if the livestock at the auction premises have to be placed under quarantine as a result of the presence of a livestock disease present. In such event BKB will have the right to cancel the auction as well as any already complete sales and no party will be entitled or have a right of recourse against BKB.
29. Any party requiring permits, removal certificate, documentation of identification or any other statutory prescribed document will solely be responsible for obtaining same. Any instructions to an auctioneer with regards to the loading, transporting, choice of transport contractors, insurance or choice of insurers will be executed at the sole risk of the person acquiring such services and the Auctioneer will not be held responsible for any losses whether direct or indirect which may be suffered as a result of giving effect to the instructions by the Auctioneer. The Auctioneer however does accept responsibility as contemplated in Section 35(2) of the Consumer Protection Act whilst the goods or lots are in the possession of the auctioneer. Any agreement entered into by the Auctioneer with a transport company or insurer is done so in its representative capacity of the seller or buyer. All transport costs or insurance premiums are therefore payable to the Auctioneer in cash except if acceptable alternative arrangements were made with the Auctioneer.
30. Both the seller and the buyer consent to the jurisdiction of the Magistrate's Court as contemplated in Section 45 of Act 32 of 1944 having regard to any action which the Auctioneer may institute against the buyer or seller irrespective of the cause of action. Notwithstanding the aforesaid the Auctioneer will have the sole and absolute discretion to institute action in any High Court with appropriate jurisdiction.
31. Any legal costs that BKB may have or will incur as a result of the non-compliance of the Purchaser and/or Seller in terms of its or their obligations herein, shall be recoverable by BKB, together with collection commissions from the Purchaser and/or Seller on a scale as between attorney and own client.
32. No variation, amendment, novation or addition to these terms and conditions will have the effect of BKB renouncing any of its rights in terms hereof, unless it is reduced to writing and signed by BKB.
33. No relaxation or indulgence by the Auctioneer must be interpreted as a waiver of any of the Auctioneer's rights in terms hereof. Such relaxation or indulgence must also not be interpreted as a novation hereof.

34. Should any condition be unlawful or become retrospectively unlawful, that unlawful condition shall be deemed to be amended to the extent and in the manner as is necessary to make it lawful or should such amendment be impossible, the unlawful conditions shall be deemed devisable from the remainder of the conditions and *pro non scripto*.
35. The cattle scale despite being calibrated, is not verified in term of the Legal Metrology Act.
36. The weight as displayed for each lot is an unverified indication of average weight and may not be relied on for purposes of entering a bid.
37. All sales of livestock are sales per head of cattle and not per kilogram
38. Rules of auctions and term and conditions in other languages can be asked for.

BKB



The Trusted Home of Agriculture
Die Betroubare Tuiste van Landbou

**Baie dankie vir u
ondersteuning!**